

NAPOLI/CAPODICHINO (NA) 72 m. s.l.m. (a.s.l.)											
TEMPERATURE											
MM	Tm	Tx 1d	Tx 2d	Tx 3d	Txm	Tn 1d	Tn 2d	Tn 3d	Tnm	Tx P85-15	Tn P85-15
Gen(Jan)	8.7	12.8	13.0	13.2	13.0	4.2	4.3	4.6	4.4	5.1	7.2
Feb(Feb)	9.0	13.7	13.1	13.7	13.5	4.2	4.6	4.6	4.5	5.8	6.8
Mar(Mar)	11.0	14.7	15.6	16.8	15.7	5.3	6.2	7.1	6.3	6.0	6.6
Apr(Apr)	13.2	17.7	17.4	19.2	18.1	8.2	7.9	9.1	8.4	6.6	5.4
Mag(May)	17.8	21.3	23.0	24.4	23.0	11.3	12.6	13.8	12.6	7.8	5.4
Giu(Jun)	21.4	25.6	26.5	27.9	26.7	15.2	16.0	17.3	16.2	5.9	4.8
Lug(Jul)	24.3	29.1	29.8	30.6	29.9	18.2	18.9	19.2	18.8	5.3	4.3
Ago(Aug)	24.7	31.2	30.8	29.0	30.3	19.6	19.4	18.3	19.1	5.8	4.8
Set(Sep)	21.3	27.7	26.8	25.4	26.6	16.9	15.9	15.0	16.0	6.0	5.2
Ott(Oct)	17.1	23.7	22.7	20.2	22.1	13.6	12.4	10.5	12.1	6.6	6.4
Nov(Nov)	12.4	18.8	17.3	15.3	17.1	9.2	8.0	6.3	7.8	6.4	7.0
Dic(Dec)	9.8	14.4	14.3	13.6	14.1	5.7	5.8	5.2	5.6	6.0	7.5
MM	NgTn ≤0	NgTn ≤-5	NgTx ≥25	NgTx ≥30	GrGi >0	GrGi >5	GrGi _18	Txx	An Tx	TNN	An Tn
Gen(Jan)	3.4	0.1	0.0	0.0	278	119	297	21.1	2000	-5.6	1981
Feb(Feb)	2.0	0.0	0.0	0.0	261	115	263	22.8	1990	-3.8	1979
Mar(Mar)	1.2	0.0	0.3	0.0	350	191	223	27.8	1981	-3.6	1988
Apr(Apr)	0.0	0.0	0.7	0.0	385	240	139	27.4	1983	0.8	1979
Mag(May)	0.0	0.0	8.8	0.0	537	386	38	34.8	1988	5.0	1987
Giu(Jun)	0.0	0.0	21.1	3.9	620	476	2	37.4	1982	9.0	1986
Lug(Jul)	0.0	0.0	30.3	15.1	754	599	0	39.0	1987	11.2	1971
Ago(Aug)	0.0	0.0	30.4	17.9	764	609	0	40.0	1981	11.4	1972
Set(Sep)	0.0	0.0	21.8	3.7	627	480	4	37.2	1982	5.6	1971
Ott(Oct)	0.0	0.0	5.8	0.0	517	366	50	31.5	2000	2.6	1972
Nov(Nov)	0.3	0.0	0.1	0.0	371	222	167	26.0	1992	-3.4	1973
Dic(Dec)	1.9	0.0	0.0	0.0	304	149	253	24.4	2000	-4.6	1986
PRECIPITAZIONI E FENOMENI (PRECIPITATION AND PHENOMENA)											
MM	RTot	RQ0	RQ1	RQ2	RQ3	RQ4	RQ5	Rx12a	Rx12b	Rx24	An Rx24
Gen(Jan)	92.1	3.9	22.2	78.0	108.5	148.1	209.8	50.2	68.6	73.8	1973
Feb(Feb)	95.3	11.7	30.1	57.4	92.8	140.8	255.6	36.8	50.8	60.2	1974
Mar(Mar)	77.9	0.0	39.0	60.2	80.0	101.8	227.4	33.0	52.2	52.2	1995
Apr(Apr)	98.6	9.0	27.8	57.0	108.2	156.5	234.2	83.4	70.4	98.6	1995
Mag(May)	59.0	0.1	15.5	25.6	60.5	82.1	223.7	82.6	48.6	87.4	1996
Giu(Jun)	32.8	0.0	5.5	11.2	31.4	49.0	173.2	34.0	55.8	65.4	1992
Lug(Jul)	28.5	0.0	0.1	4.4	13.5	57.4	147.1	30.0	75.4	75.4	1986
Ago(Aug)	35.5	0.0	6.9	12.5	35.4	63.9	115.2	22.2	42.2	42.4	1980
Set(Sep)	88.9	0.0	41.0	65.7	72.3	127.4	297.1	86.2	63.0	101.2	1995
Ott(Oct)	135.5	18.7	60.6	82.6	126.8	189.8	305.7	87.6	76.0	114.2	1980
Nov(Nov)	152.1	19.7	51.3	93.7	183.9	259.8	375.5	71.2	92.0	114.0	1989
Dic(Dec)	112.0	23.3	57.2	79.0	110.7	173.7	252.2	48.4	64.0	76.2	1995
MM	NgR >1	NgR >5	NgR >10	NgR >50	Ng Fog	Ux%	Un%	Ng h6 Nuv≤4	Ng h6 Nuv>4	Ngh18 Nuv≤4	Ngh18 Nuv>4
Gen(Jan)	9.3	5.7	3.6	0.2	2.1	93	57	15.8	15.1	14.9	15.9
Feb(Feb)	9.1	5.4	3.3	0.1	1.7	92	53	14.4	13.8	13.7	14.4
Mar(Mar)	8.6	4.9	3.2	0.0	1.1	93	51	13.3	17.7	13.1	17.9
Apr(Apr)	9.3	5.5	3.4	0.1	0.7	94	49	13.1	17.3	12.2	18.3
Mag(May)	6.1	3.5	1.9	0.2	0.9	95	49	16.7	15.0	15.4	16.3
Giu(Jun)	3.3	1.7	1.2	0.0	0.3	94	49	20.7	8.9	19.1	10.6
Lug(Jul)	2.4	1.2	0.8	0.2	0.3	94	46	25.8	4.7	24.0	6.8
Ago(Aug)	3.7	2.0	1.4	0.0	0.0	94	47	25.3	5.6	23.6	7.3
Set(Sep)	6.1	3.9	2.9	0.2	1.1	95	51	20.3	9.6	19.6	10.3
Ott(Oct)	8.5	6.0	4.3	0.3	2.1	94	53	17.3	13.6	18.8	12.0
Nov(Nov)	10.2	6.8	4.8	0.4	1.1	95	57	14.9	14.8	16.0	13.8
Dic(Dec)	9.9	6.2	4.4	0.2	2.1	93	59	16.4	14.8	16.3	14.6

NAPOLI/CAPODICHINO (NA) 72 m. s.l.m. (a.s.l.)**DISTRIBUZIONE DEI VENTI (WIND DISTRIBUTION) - HH 00**

MM	Calme	N 1-10	N 11-20	N >20	NE 1-10	NE 11-20	NE >20	E 1-10	E 11-20	E >20	SE 1-10	SE 11-20	SE >20
Gen(Jan)	39.10	16.14	1.65	0.71	7.66	3.42	0.35	2.36	1.18	0.12	1.06	0.24	0.00
Feb(Feb)	36.74	13.97	1.94	0.26	9.06	6.73	0.26	2.20	1.94	0.13	0.78	0.13	0.13
Mar(Mar)	44.46	10.39	2.10	0.12	9.33	3.62	0.23	1.87	1.05	0.00	0.70	0.35	0.00
Apr(Apr)	53.51	8.43	0.59	0.00	6.21	1.87	0.12	1.52	0.70	0.00	0.70	0.59	0.00
Mag(May)	56.69	8.34	0.69	0.23	6.40	0.69	0.00	2.74	0.11	0.00	0.69	0.00	0.00
Giu(Jun)	61.57	7.96	0.00	0.24	5.63	0.24	0.00	3.06	0.00	0.00	0.37	0.00	0.00
Lug(Jul)	67.22	8.22	0.36	0.48	7.27	0.24	0.00	2.26	0.12	0.00	0.72	0.00	0.00
Ago(Aug)	67.96	8.22	0.23	0.35	7.16	0.59	0.00	2.11	0.00	0.00	0.35	0.00	0.00
Set(Sep)	62.52	9.43	0.48	0.24	8.83	1.33	0.00	1.69	0.12	0.00	0.60	0.12	0.00
Ott(Oct)	51.29	13.18	1.06	0.12	7.88	3.06	0.35	1.76	0.59	0.00	0.24	0.59	0.00
Nov(Nov)	42.53	16.40	0.73	0.12	6.56	3.16	0.36	1.09	0.85	0.00	0.61	0.12	0.00
Dic(Dec)	35.85	16.36	1.86	0.46	7.77	4.06	0.70	0.70	0.58	0.23	0.58	0.35	0.00
MM	S 1-10	S 11-20	S >20	SW 1-10	SW 11-20	SW >20	W 1-10	W 11-20	W >20	NW 1-10	NW 11-20	NW >20	V _{xx}
Gen(Jan)	2.36	2.94	0.35	4.24	2.12	0.35	3.65	1.41	0.12	7.54	0.71	0.00	80
Feb(Feb)	2.98	2.98	0.39	3.10	2.72	0.26	3.75	1.16	0.52	7.37	0.52	0.00	96
Mar(Mar)	5.02	2.45	0.12	4.55	2.45	0.12	4.32	0.58	0.00	5.60	0.35	0.12	67
Apr(Apr)	5.15	2.93	0.23	5.15	2.11	0.12	3.63	0.82	0.12	5.15	0.23	0.00	58
Mag(May)	4.80	1.94	0.00	5.26	1.14	0.11	3.89	1.14	0.11	4.11	0.23	0.00	89
Giu(Jun)	3.06	0.73	0.12	5.02	0.86	0.00	6.36	1.35	0.12	2.82	0.37	0.00	72
Lug(Jul)	1.67	0.12	0.00	3.34	0.24	0.00	2.62	0.36	0.12	4.05	0.24	0.00	92
Ago(Aug)	1.88	0.35	0.00	2.82	0.35	0.00	3.05	0.59	0.00	3.64	0.12	0.00	62
Set(Sep)	1.57	1.09	0.12	3.02	0.48	0.00	3.14	0.24	0.00	4.47	0.12	0.00	89
Ott(Oct)	1.88	1.76	0.00	4.35	1.29	0.24	2.94	0.47	0.00	6.12	0.59	0.00	89
Nov(Nov)	2.19	2.55	0.12	3.89	3.28	0.36	3.89	0.85	0.61	9.48	0.00	0.00	85
Dic(Dec)	2.32	3.36	0.35	4.52	4.18	0.23	2.78	2.09	0.23	9.40	0.46	0.00	95

DISTRIBUZIONE DEI VENTI (WIND DISTRIBUTION) - HH 06

MM	Calme	N 1-10	N 11-20	N >20	NE 1-10	NE 11-20	NE >20	E 1-10	E 11-20	E >20	SE 1-10	SE 11-20	SE >20
Gen(Jan)	35.21	16.67	3.05	0.35	5.87	5.40	0.82	1.88	1.29	0.00	0.70	0.59	0.12
Feb(Feb)	34.79	15.92	3.47	0.26	8.99	5.65	0.77	2.57	1.16	0.13	0.77	0.26	0.26
Mar(Mar)	43.98	14.97	2.22	0.00	8.07	3.86	0.23	1.99	0.35	0.00	0.70	0.23	0.00
Apr(Apr)	51.49	12.96	1.43	0.24	4.88	2.50	0.12	1.43	0.59	0.12	0.95	0.24	0.00
Mag(May)	55.54	11.54	1.03	0.11	8.69	0.91	0.00	2.40	0.11	0.00	0.57	0.00	0.00
Giu(Jun)	58.24	12.09	0.12	0.37	8.55	0.73	0.00	3.05	0.00	0.00	1.22	0.00	0.00
Lug(Jul)	65.35	12.54	0.12	0.60	9.44	0.72	0.00	1.79	0.24	0.00	0.36	0.00	0.00
Ago(Aug)	66.82	13.25	0.12	0.23	6.57	0.35	0.00	1.64	0.12	0.00	0.35	0.00	0.00
Set(Sep)	58.42	14.18	0.61	0.12	7.39	0.85	0.12	1.21	0.12	0.00	0.73	0.00	0.00
Ott(Oct)	48.83	15.85	1.17	0.12	4.93	2.46	0.47	2.35	0.59	0.00	0.82	0.23	0.23
Nov(Nov)	39.93	16.36	1.22	0.12	5.49	3.42	0.12	1.95	0.61	0.12	0.49	0.24	0.24
Dic(Dec)	35.62	16.18	1.86	0.35	7.10	4.66	0.81	0.93	0.47	0.35	0.93	0.12	0.23
MM	S 1-10	S 11-20	S >20	SW 1-10	SW 11-20	SW >20	W 1-10	W 11-20	W >20	NW 1-10	NW 11-20	NW >20	V _{xx}
Gen(Jan)	2.23	1.76	0.35	2.93	2.70	0.35	2.70	1.76	0.12	12.79	0.35	0.00	
Feb(Feb)	2.70	2.31	0.13	2.57	2.31	0.00	3.47	0.77	0.13	9.63	0.77	0.00	
Mar(Mar)	2.69	1.87	0.23	3.39	1.87	0.12	2.57	1.40	0.12	7.84	0.94	0.00	
Apr(Apr)	2.97	2.50	0.12	3.45	2.02	0.24	3.09	1.19	0.12	6.54	0.24	0.00	
Mag(May)	3.20	1.03	0.23	3.89	1.71	0.11	2.29	0.34	0.11	5.83	0.11	0.00	
Giu(Jun)	3.54	1.10	0.00	2.44	0.61	0.00	2.69	1.47	0.00	3.17	0.61	0.00	
Lug(Jul)	1.31	0.12	0.00	1.55	0.24	0.00	1.31	0.48	0.00	3.58	0.00	0.00	
Ago(Aug)	1.06	0.12	0.00	0.94	0.23	0.00	1.29	0.70	0.00	5.74	0.12	0.23	
Set(Sep)	2.42	0.73	0.00	1.82	0.73	0.00	2.55	0.48	0.12	7.15	0.12	0.12	
Ott(Oct)	2.23	0.94	0.00	2.58	1.41	0.12	2.58	0.70	0.00	10.92	0.35	0.00	
Nov(Nov)	2.69	1.22	0.37	2.81	3.54	0.49	3.54	1.10	0.37	12.33	0.61	0.00	
Dic(Dec)	2.79	2.44	0.23	4.42	3.38	0.23	3.38	1.40	0.12	10.59	0.93	0.00	

NAPOLI/CAPODICHINO (NA) 72 m. s.l.m. (a.s.l.)**DISTRIBUZIONE DEI VENTI (WIND DISTRIBUTION) - HH 12**

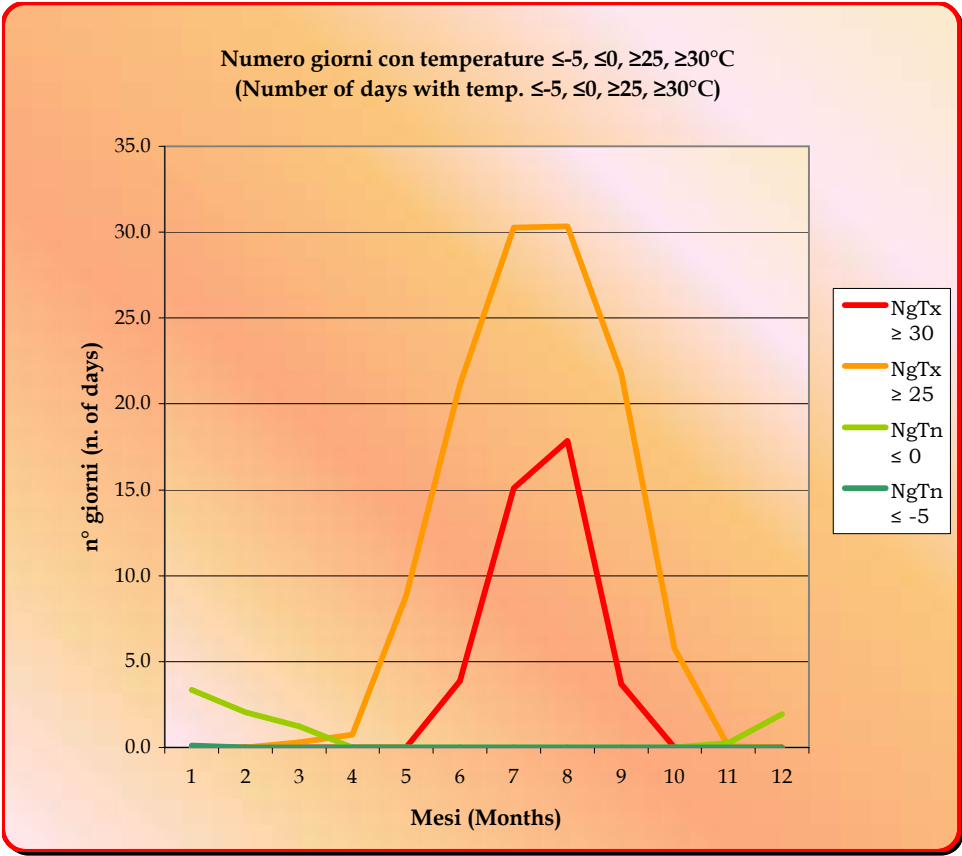
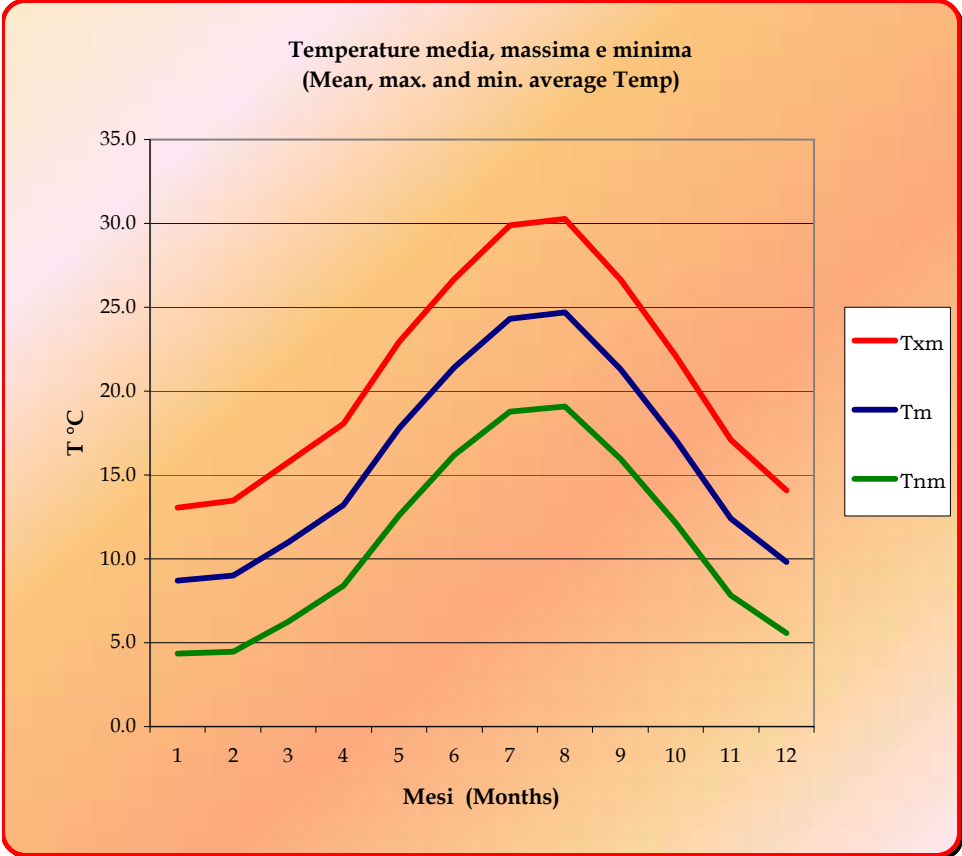
MM	Calme	N 1-10	N 11-20	N >20	NE 1-10	NE 11-20	NE >20	E 1-10	E 11-20	E >20	SE 1-10	SE 11-20	SE >20
Gen(Jan)	22.98	15.01	2.23	0.82	8.09	7.74	1.64	2.93	3.17	0.12	0.59	0.70	0.12
Feb(Feb)	10.34	10.59	2.20	0.52	8.66	11.37	1.03	4.39	5.04	0.26	1.94	0.26	0.00
Mar(Mar)	6.35	5.76	3.06	0.47	7.52	7.87	1.06	2.00	3.53	0.35	0.71	0.47	0.00
Apr(Apr)	3.68	3.80	1.19	0.36	5.22	4.51	0.47	2.73	1.90	0.24	0.83	0.83	0.00
Mag(May)	3.09	3.44	1.03	0.23	3.89	4.47	0.11	1.60	1.37	0.11	1.49	0.11	0.00
Giu(Jun)	1.34	1.10	0.86	0.12	3.55	1.83	0.12	1.59	1.10	0.00	0.49	0.37	0.00
Lug(Jul)	1.31	2.62	0.71	0.00	4.04	3.57	0.00	2.97	0.83	0.00	0.59	0.00	0.00
Ago(Aug)	1.54	3.55	1.18	0.12	6.15	1.89	0.12	2.84	0.83	0.12	1.42	0.00	0.00
Set(Sep)	6.19	3.52	1.33	0.24	5.58	3.64	0.36	4.13	0.85	0.00	1.58	0.24	0.00
Ott(Oct)	14.00	7.53	1.76	0.24	8.59	7.65	0.35	4.12	1.41	0.00	1.06	0.59	0.12
Nov(Nov)	21.83	11.83	2.20	0.24	8.54	7.56	0.37	3.05	2.93	0.12	1.22	0.85	0.24
Dic(Dec)	22.95	13.93	2.22	0.70	8.08	9.95	1.41	2.81	2.22	0.23	1.87	0.47	0.00
MM	S 1-10	S 11-20	S >20	SW 1-10	SW 11-20	SW >20	W 1-10	W 11-20	W >20	NW 1-10	NW 11-20	NW >20	Vxx
Gen(Jan)	6.80	4.69	0.23	3.99	4.57	0.47	3.05	3.17	0.59	5.04	1.06	0.00	
Feb(Feb)	10.08	5.94	0.65	7.49	5.04	0.78	2.84	3.75	0.52	5.04	1.16	0.00	
Mar(Mar)	17.04	10.58	0.24	9.40	8.34	0.12	4.11	4.00	1.06	4.00	1.18	0.00	
Apr(Apr)	16.13	14.95	0.36	13.64	13.64	0.59	2.97	5.46	0.83	3.08	0.47	0.00	
Mag(May)	18.44	19.70	0.34	12.37	15.35	0.34	3.09	4.01	0.34	1.95	0.69	0.00	
Giu(Jun)	22.00	19.80	0.24	12.71	16.99	0.37	2.08	7.82	0.00	1.47	0.86	0.00	
Lug(Jul)	24.97	19.98	0.12	12.25	13.56	0.00	2.50	3.80	0.36	2.14	0.83	0.00	
Ago(Aug)	23.17	22.46	0.24	12.29	10.28	0.12	2.96	3.43	0.47	1.89	0.71	0.00	
Set(Sep)	21.97	11.89	0.24	15.29	7.89	0.36	3.03	6.19	0.61	2.55	0.73	0.00	
Ott(Oct)	13.65	6.00	0.00	11.76	4.94	0.47	4.82	4.24	0.12	4.47	0.71	0.00	
Nov(Nov)	7.32	4.88	0.37	5.98	5.37	0.85	3.54	3.17	0.61	4.76	1.22	0.00	
Dic(Dec)	5.04	4.45	0.47	4.68	4.80	0.47	2.34	4.33	0.23	4.68	0.94	0.00	

DISTRIBUZIONE DEI VENTI (WIND DISTRIBUTION) - HH 18

MM	Calme	N 1-10	N 11-20	N >20	NE 1-10	NE 11-20	NE >20	E 1-10	E 11-20	E >20	SE 1-10	SE 11-20	SE >20
Gen(Jan)	35.76	7.50	2.23	0.70	8.44	6.92	0.47	3.99	1.52	0.12	0.82	0.70	0.12
Feb(Feb)	25.42	4.77	1.68	0.13	8.39	9.16	0.90	4.90	3.74	0.13	1.55	0.52	0.00
Mar(Mar)	17.64	3.74	1.64	0.12	6.19	6.31	0.23	4.67	2.69	0.12	0.93	0.23	0.00
Apr(Apr)	17.40	3.43	1.30	0.24	4.14	3.31	0.12	2.84	1.78	0.24	0.83	0.36	0.00
Mag(May)	17.53	2.41	0.69	0.34	3.78	2.06	0.00	2.18	1.37	0.00	1.72	0.23	0.00
Giu(Jun)	12.32	1.46	0.37	0.12	2.32	1.22	0.00	1.22	0.24	0.00	1.10	0.00	0.00
Lug(Jul)	12.35	2.71	0.59	0.47	2.71	1.06	0.00	1.53	0.82	0.00	1.06	0.12	0.00
Ago(Aug)	13.11	2.22	0.47	0.12	3.04	1.41	0.00	1.76	0.35	0.12	0.82	0.00	0.00
Set(Sep)	28.48	2.30	0.24	0.12	6.06	1.21	0.00	3.27	0.73	0.12	0.36	0.24	0.00
Ott(Oct)	43.19	4.11	1.53	0.12	9.51	3.05	0.23	4.23	1.17	0.00	0.59	0.23	0.00
Nov(Nov)	39.42	8.76	1.09	0.36	9.37	4.99	0.12	3.53	1.58	0.00	0.73	0.24	0.12
Dic(Dec)	37.63	8.79	2.11	0.23	9.03	6.68	1.17	3.52	1.17	0.00	1.06	0.00	0.00
MM	S 1-10	S 11-20	S >20	SW 1-10	SW 11-20	SW >20	W 1-10	W 11-20	W >20	NW 1-10	NW 11-20	NW >20	Vxx
Gen(Jan)	5.04	2.58	0.00	6.10	1.99	0.47	6.21	1.41	0.35	6.21	0.23	0.00	
Feb(Feb)	6.84	3.23	0.26	6.32	2.84	0.39	9.16	2.71	0.26	5.29	1.42	0.00	
Mar(Mar)	9.70	3.50	0.12	12.27	3.27	0.12	11.21	4.79	0.47	7.48	2.22	0.00	
Apr(Apr)	14.08	4.26	0.00	10.89	5.44	0.00	13.96	5.80	0.47	6.39	2.49	0.12	
Mag(May)	15.23	4.58	0.00	10.77	3.78	0.11	14.43	4.12	0.00	10.77	3.78	0.00	
Giu(Jun)	18.54	4.39	0.00	8.17	4.02	0.00	16.71	11.46	0.24	12.20	3.41	0.12	
Lug(Jul)	13.53	2.24	0.00	7.76	2.00	0.00	17.06	10.00	0.00	17.53	6.35	0.00	
Ago(Aug)	13.11	1.64	0.00	7.14	1.17	0.00	22.13	8.55	0.23	18.15	4.10	0.12	
Set(Sep)	10.06	1.70	0.00	8.24	1.45	0.00	18.79	3.88	0.00	11.39	1.33	0.00	
Ott(Oct)	5.63	2.00	0.12	6.92	2.00	0.12	6.46	1.64	0.12	6.57	0.00	0.00	
Nov(Nov)	4.14	3.16	0.36	5.96	2.80	0.36	5.23	1.46	0.12	5.23	0.12	0.24	
Dic(Dec)	4.22	2.23	0.00	6.10	4.45	0.12	3.75	1.64	0.23	5.16	0.23	0.00	

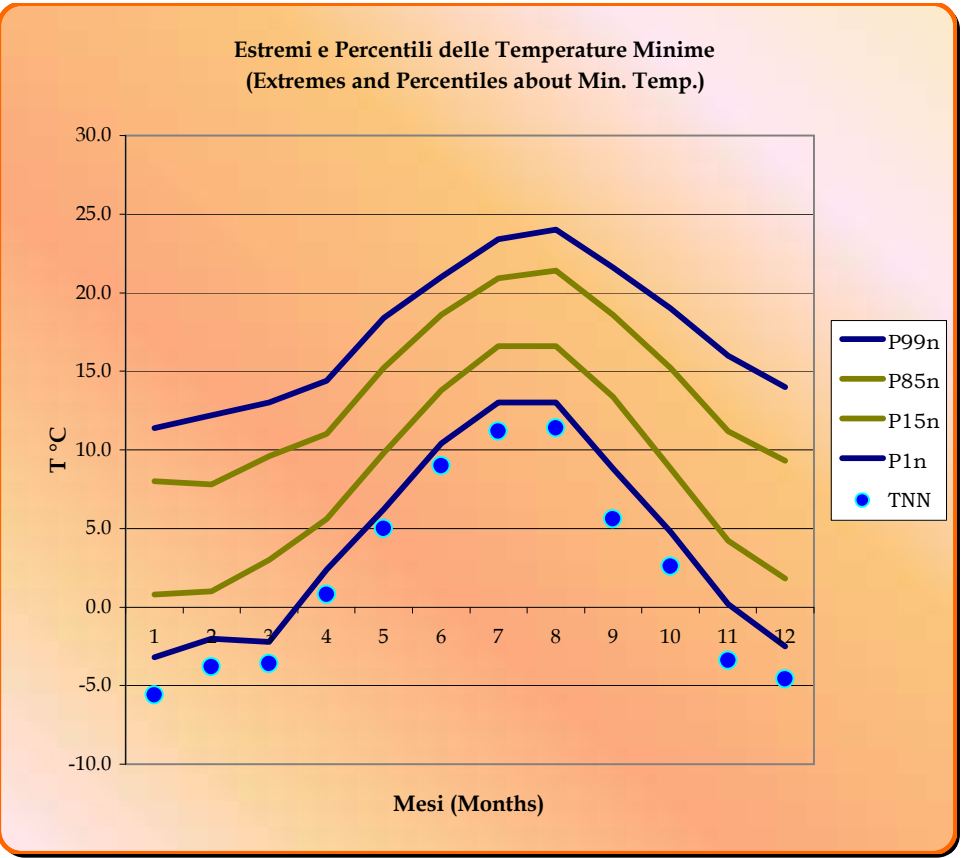
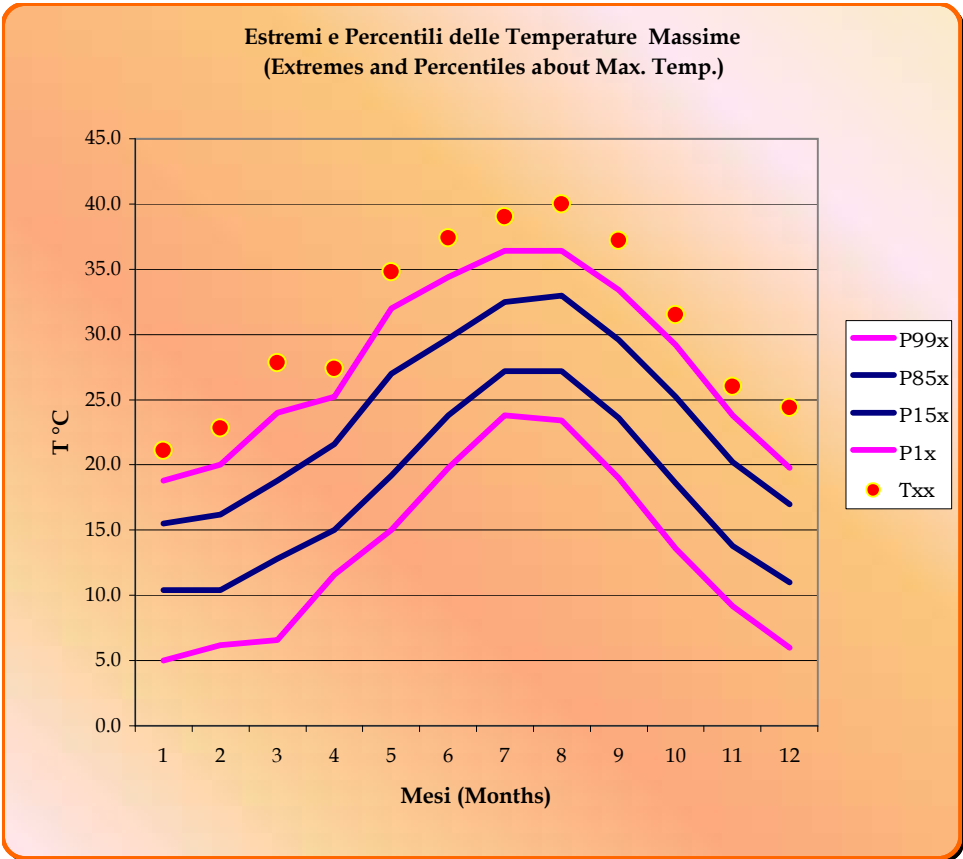


NAPOLI/CAPODICHINO (NA) 72 m. s.l.m. (a.s.l.)



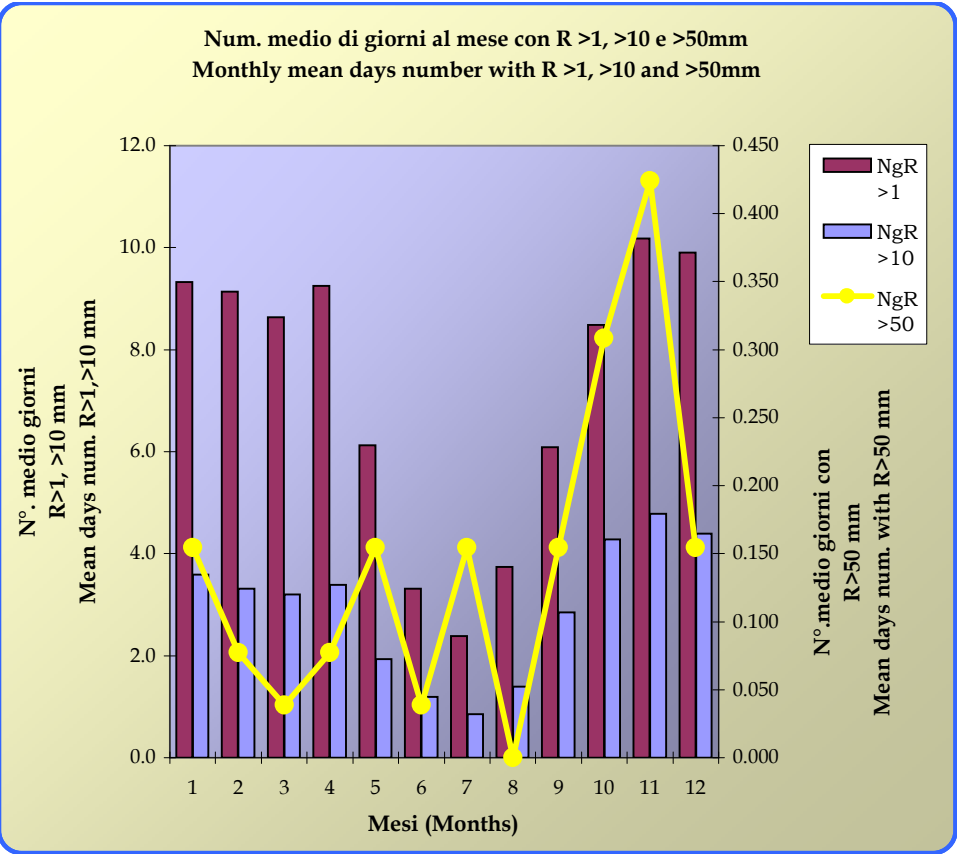
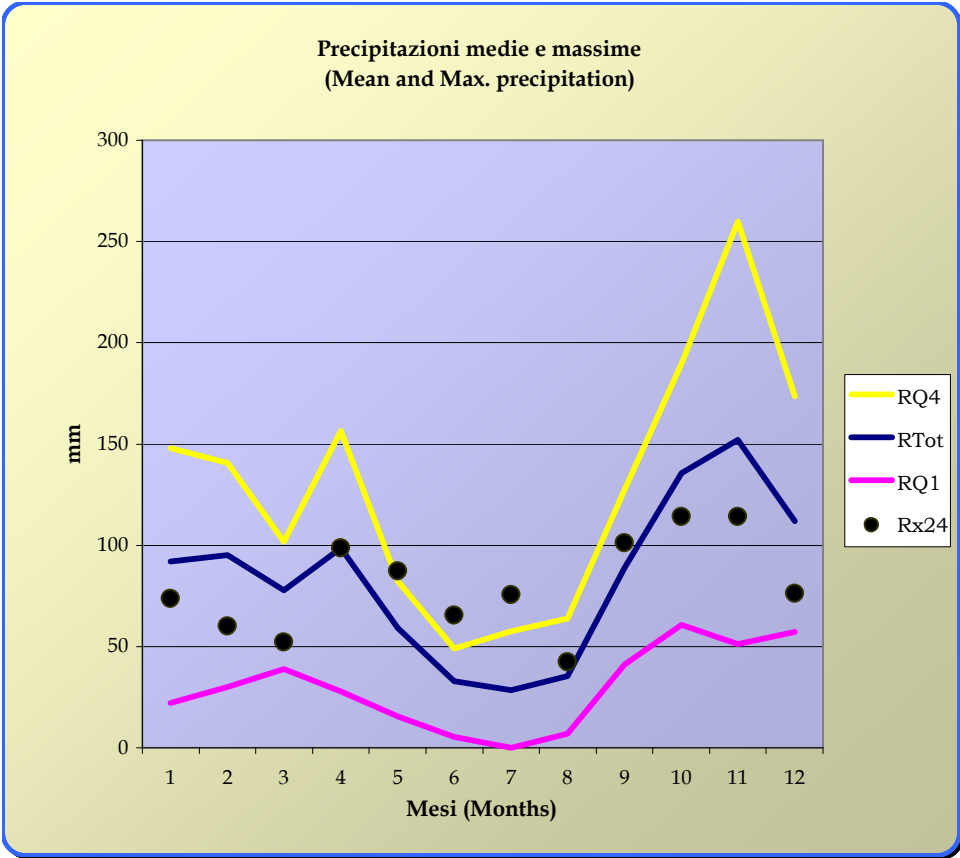


NAPOLI/CAPODICHINO (NA) 72 m. s.l.m. (a.s.l.)



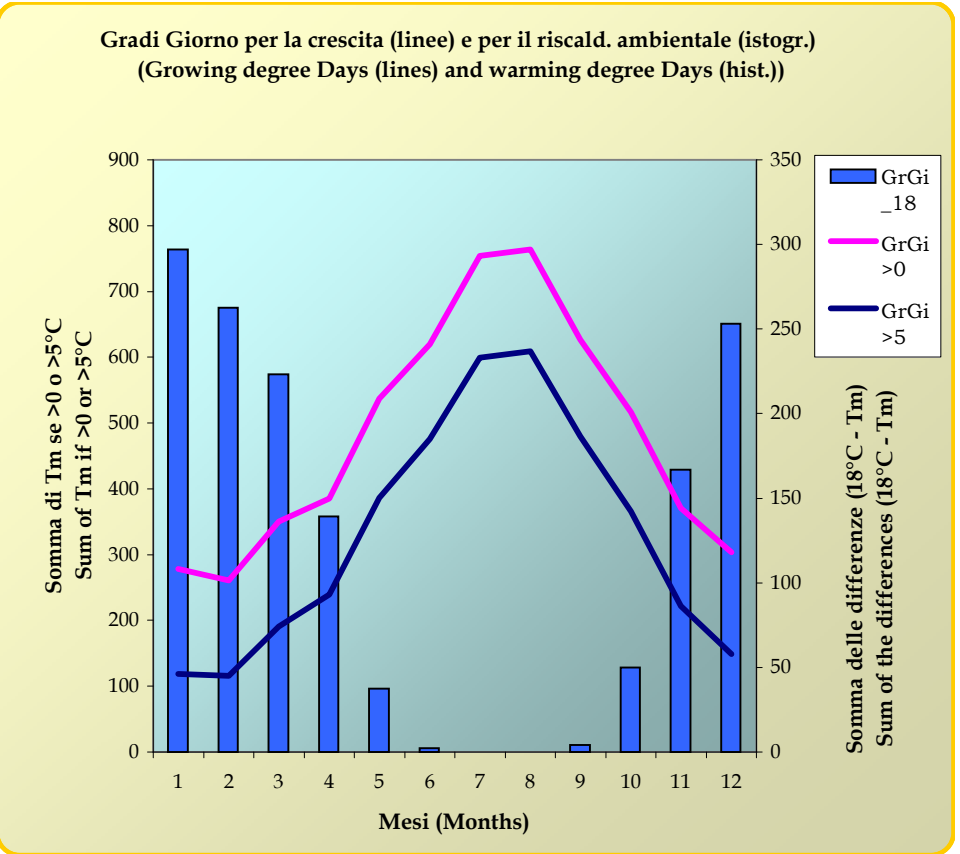
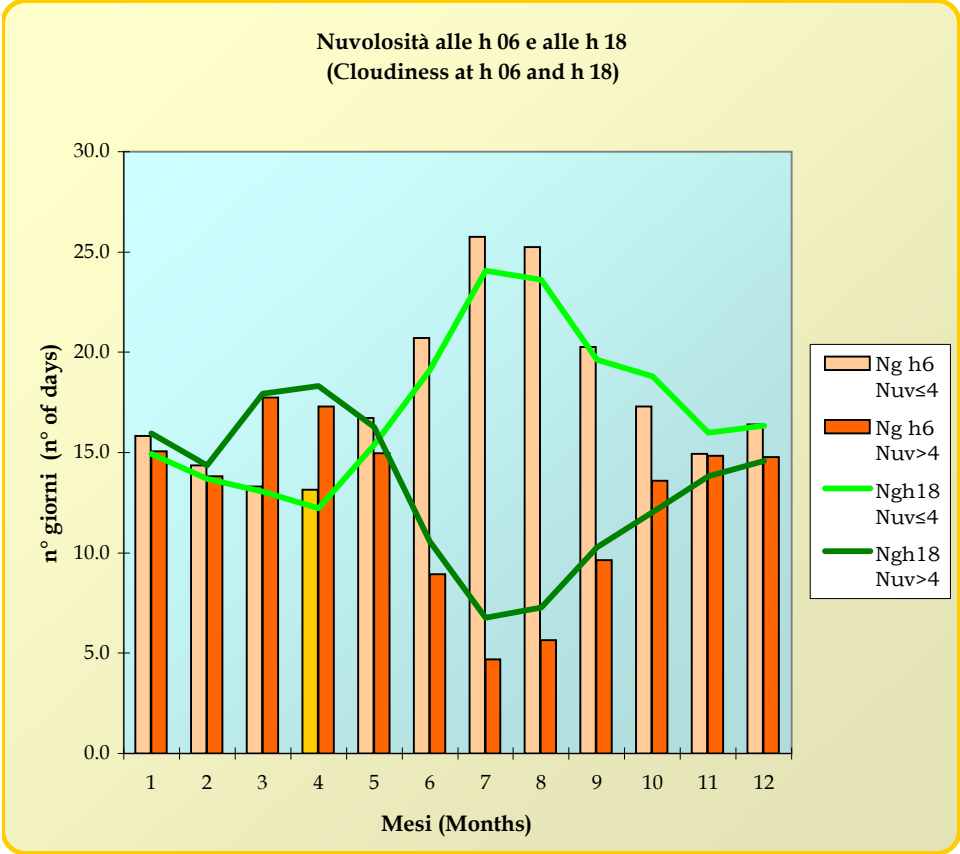


NAPOLI/CAPODICHINO (NA) 72 m. s.l.m. (a.s.l.)



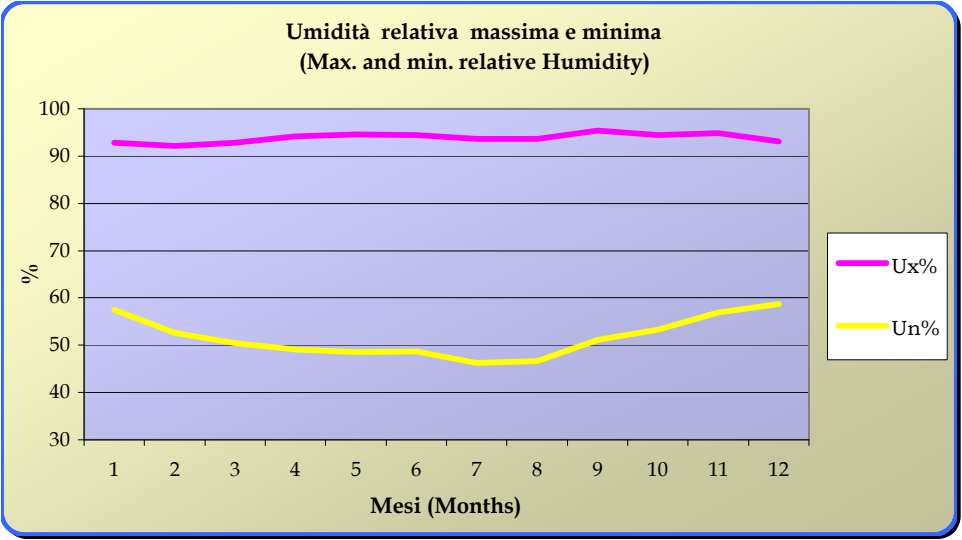


NAPOLI/CAPODICHINO (NA) 72 m. s.l.m. (a.s.l.)



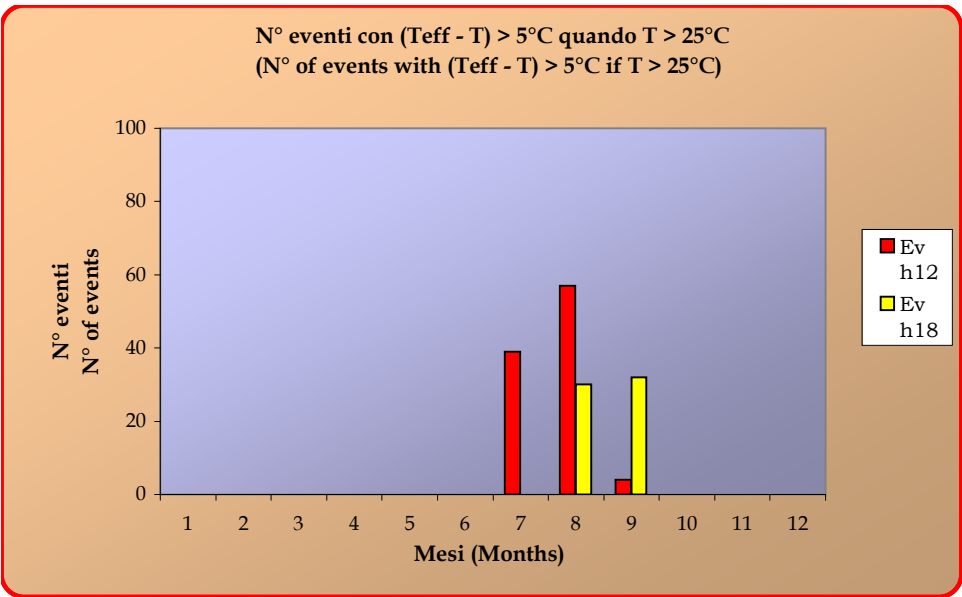


NAPOLI/CAPODICHINO (NA) 72 m. s.l.m. (a.s.l.)



Temperature di effetto (Discomfort temperature)

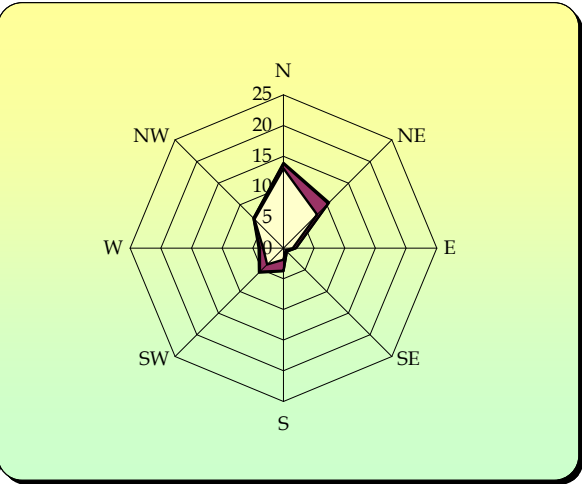
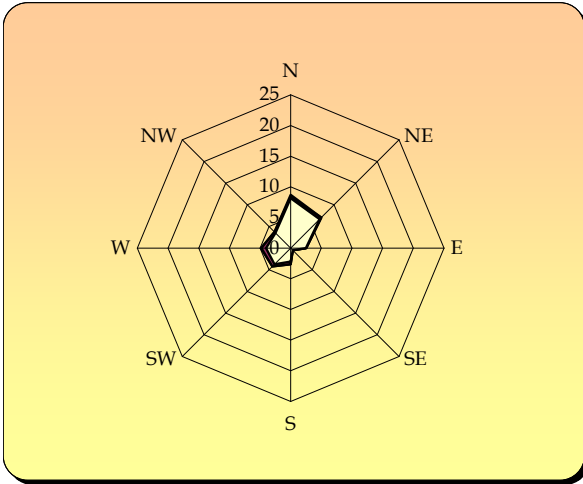
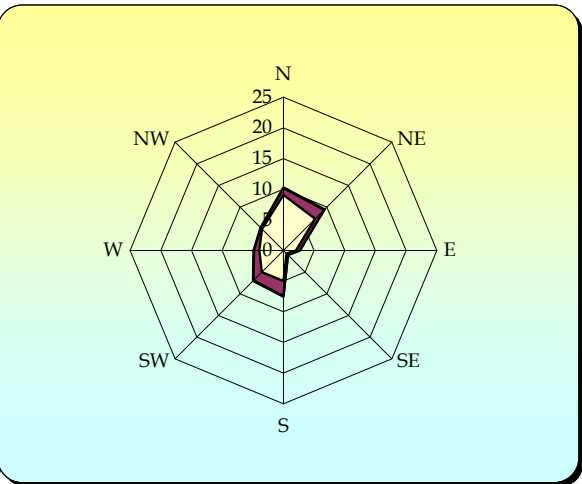
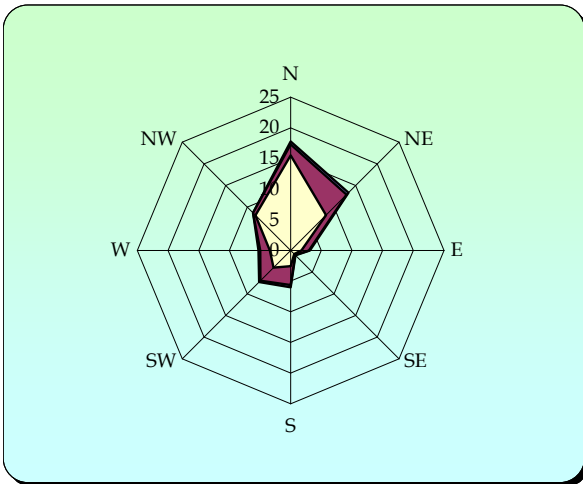
MM	Teff12	Ev h12	Tm 12	U% 12	Teff18	Ev h18	Tm 18	U% 18
Gen(Jan)								
Feb(Feb)								
Mar(Mar)								
Apr(Apr)								
Mag(May)								
Giu(Jun)								
Lug(Jul)	37.8	39	31.0	71				
Ago(Aug)	37.5	57	31.2	68	35.9	30	29.5	79
Set(Sep)	36.8	4	30.6	71	36.1	32	29.4	82
Ott(Oct)								
Nov(Nov)								
Dic(Dec)								





NAPOLI/CAPODICHINO (NA) 72 m. s.l.m. (a.s.l.)

**GRAFICI ANEMOMETRICI
(ANEMOMETRIC DIAGRAMS)**



I diagrammi del vento sono ordinati per stagione come la tabella seguente.
(The anemometric diagrams are ordered by season as follows)

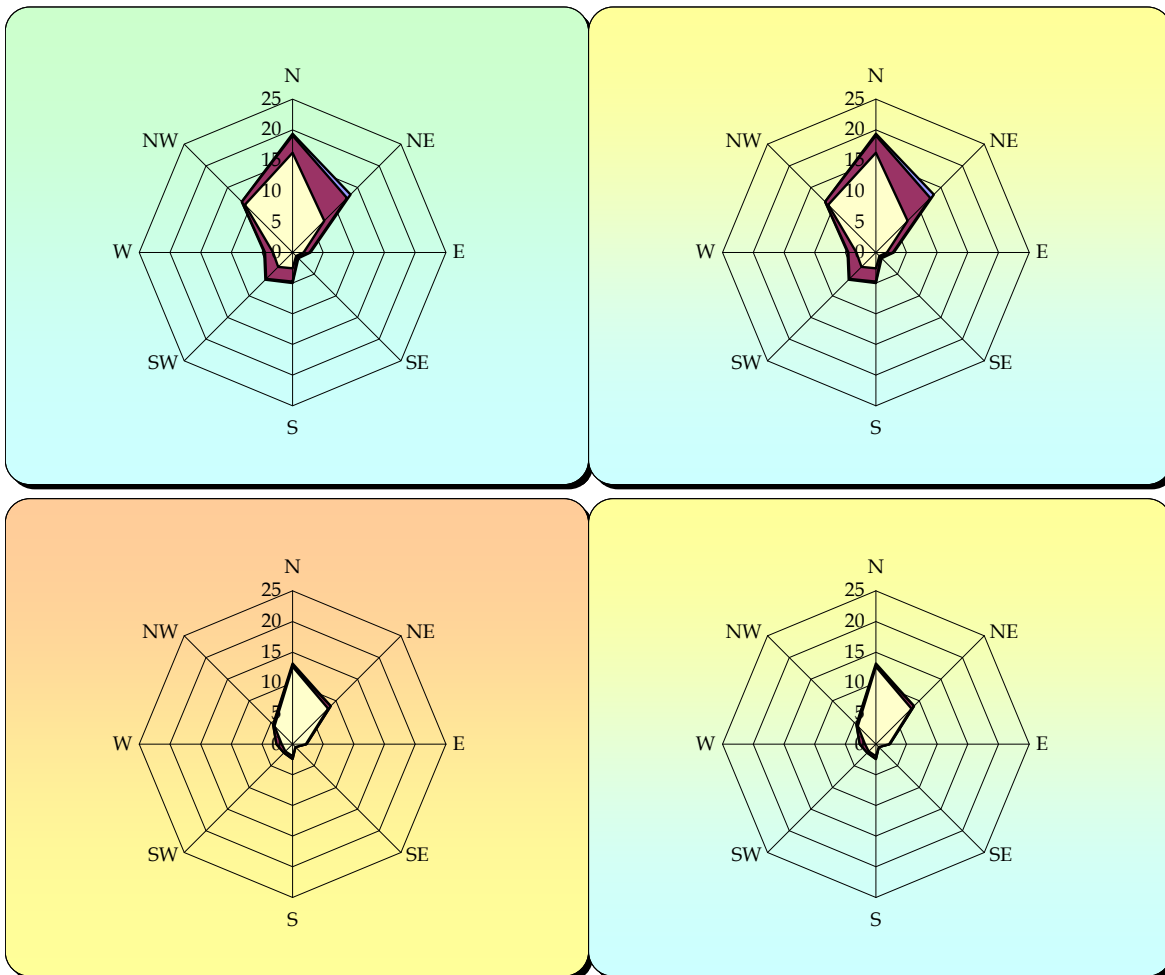
INVERNO (Dic. - Gen. - Feb.) WINTER (Dec. - Jan. - Feb.) % calme di vento = 37 % Wind Calm =	PRIMAVERA (Mar. - Apr. - Mag.) SPRING (Mar. - Apr. - May.) % calme di vento = 52 % Wind Calm =
ESTATE (Giu. - Lug. - Ago.) SUMMER (Jun. - Jul. - Aug.) % calme di vento = 66 % Wind Calm =	AUTUNNO (Set. - Ott. - Nov.) AUTUMN (Sep. - Oct. - Nov.) % calme di vento = 52 % Wind Calm =

Periodo di riferimento dei dati (Period of reference considered to get data) = **1971 ÷ 2000**
Frequenze percentuali alle ore (Percentage frequency of occurrence at) = **00 UTC**



NAPOLI/CAPODICHINO (NA) 72 m. s.l.m. (a.s.l.)

**GRAFICI ANEMOMETRICI
(ANEMOMETRIC DIAGRAMS)**



I diagrammi del vento sono ordinati per stagione come la tabella seguente.
(The anemometric diagrams are ordered by season as follows)

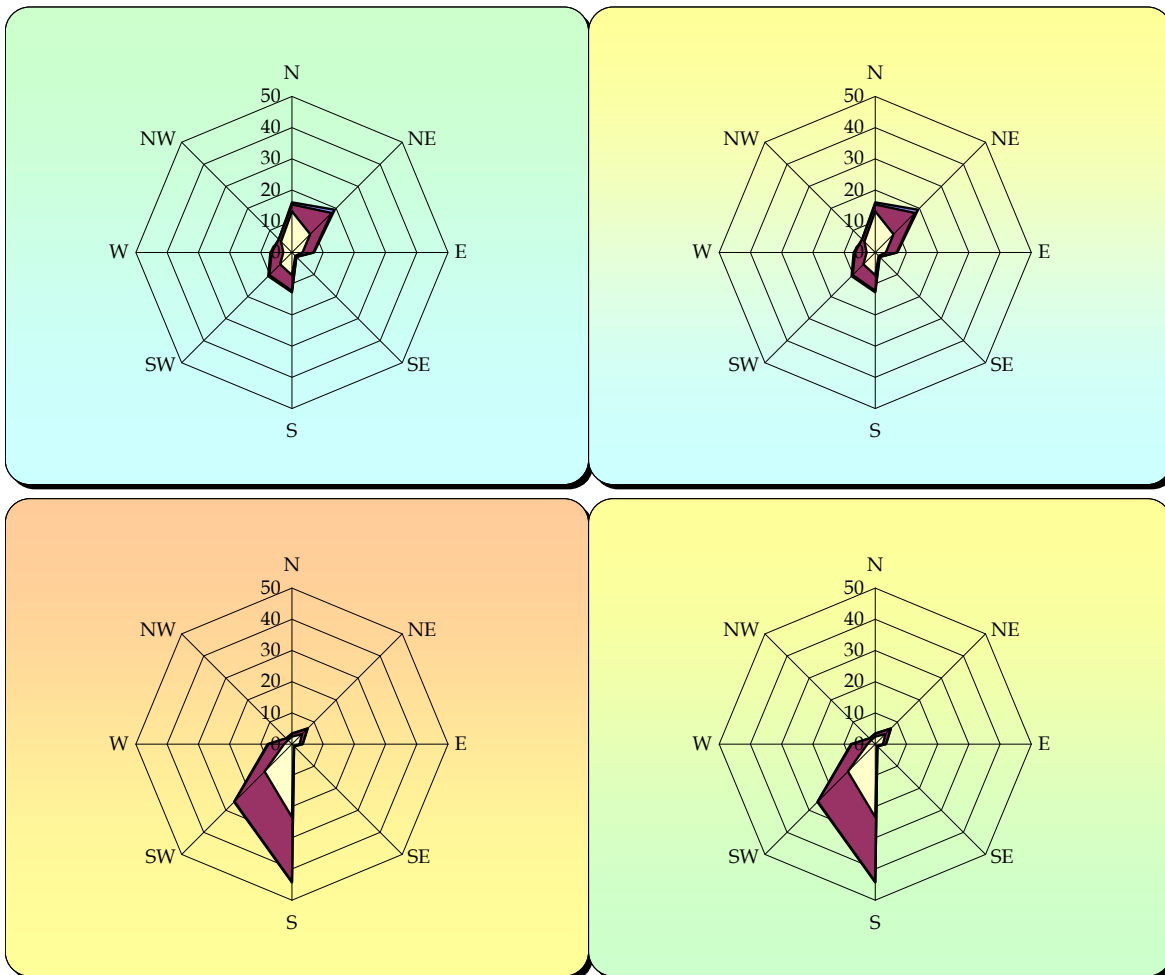
INVERNO (Dic. - Gen. - Feb.) WINTER (Dec. - Jan. - Feb.) % calme di vento = 35 % Wind Calm =	PRIMAVERA (Mar. - Apr. - Mag.) SPRING (Mar. - Apr. - May.) % calme di vento = 50 % Wind Calm =
ESTATE (Giu. - Lug. - Ago.) SUMMER (Jun. - Jul. - Aug.) % calme di vento = 63 % Wind Calm =	AUTUNNO (Set. - Ott. - Nov.) AUTUMN (Sep. - Oct. - Nov.) % calme di vento = 49 % Wind Calm =

Periodo di riferimento dei dati (Period of reference considered to get data) = **1971 ÷ 2000**
Frequenze percentuali alle ore (Percentage frequency of occurrence at) = **06 UTC**



NAPOLI/CAPODICHINO (NA) 72 m. s.l.m. (a.s.l.)

**GRAFICI ANEMOMETRICI
(ANEMOMETRIC DIAGRAMS)**



I diagrammi del vento sono ordinati per stagione come la tabella seguente.
(The anemometric diagrams are ordered by season as follows)

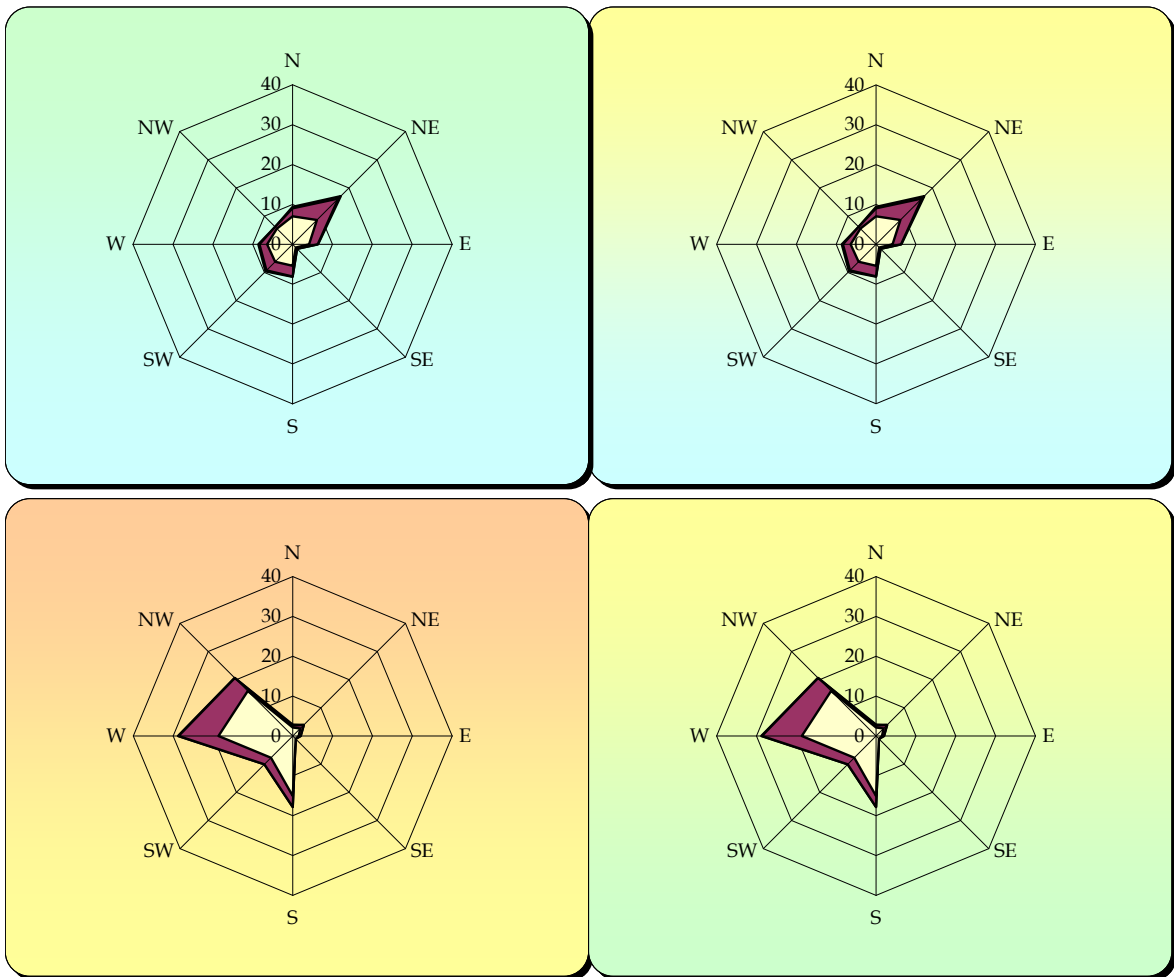
INVERNO (Dic. - Gen. - Feb.) WINTER (Dec. - Jan. - Feb.) % calme di vento = % Wind Calm =	19	PRIMAVERA (Mar. - Apr. - Mag.) SPRING (Mar. - Apr. - May.) % calme di vento = % Wind Calm =	4
ESTATE (Giu. - Lug. - Ago.) SUMMER (Jun. - Jul. - Aug.) % calme di vento = % Wind Calm =	1	AUTUNNO (Set. - Ott. - Nov.) AUTUMN (Sep. - Oct. - Nov.) % calme di vento = % Wind Calm =	14

Periodo di riferimento dei dati (Period of reference considered to get data) = **1971 ÷ 2000**
Frequenze percentuali alle ore (Percentage frequency of occurrence at) = **12 UTC**



NAPOLI/CAPODICHINO (NA) 72 m. s.l.m. (a.s.l.)

**GRAFICI ANEMOMETRICI
(ANEMOMETRIC DIAGRAMS)**



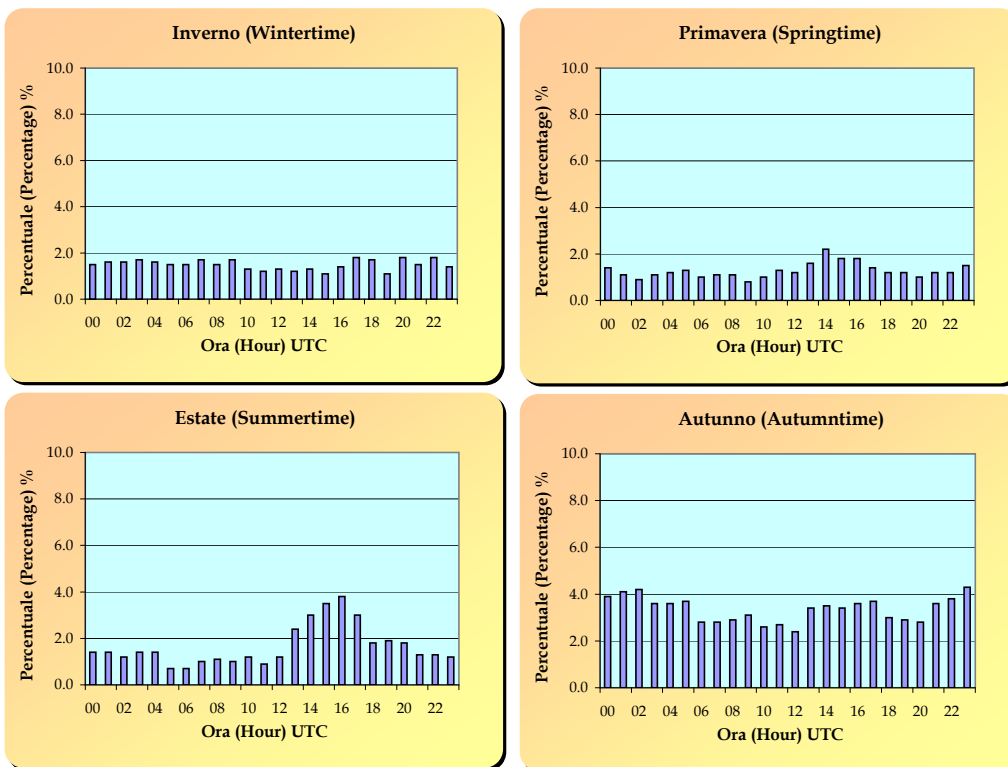
I diagrammi del vento sono ordinati per stagione come la tabella seguente.
(The anemometric diagrams are ordered by season as follows)

INVERNO (Dic. - Gen. - Feb.) WINTER (Dec. - Jan. - Feb.) % calme di vento = 33 % Wind Calm =	PRIMAVERA (Mar. - Apr. - Mag.) SPRING (Mar. - Apr. - May.) % calme di vento = 18 % Wind Calm =
ESTATE (Giu. - Lug. - Ago.) SUMMER (Jun. - Jul. - Aug.) % calme di vento = 13 % Wind Calm =	AUTUNNO (Set. - Ott. - Nov.) AUTUMN (Sep. - Oct. - Nov.) % calme di vento = 37 % Wind Calm =

Periodo di riferimento dei dati (Period of reference considered to get data) = **1971 ÷ 2000**
Frequenze percentuali alle ore (Percentage frequency of occurrence at) = **18 UTC**

**NAPOLI/CAPODICHINO (NA) 72 m. s.l.m. (a.s.l.)**

PERCENTUALE DI CASI CON NUBI TEMPORALESICHE NEL
PERIODO 1973-2000 NELLE VARIE STAGIONI
(PERCENTAGE OF OBSERVED CUMULONIMBUS IN THE
PERIOD 1973-2000 FOR EACH SEASON)



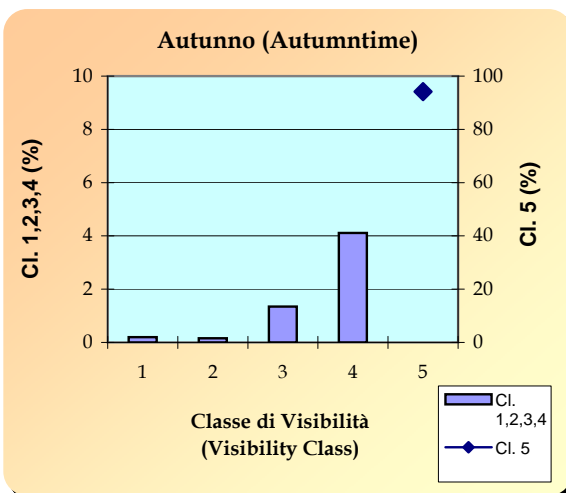
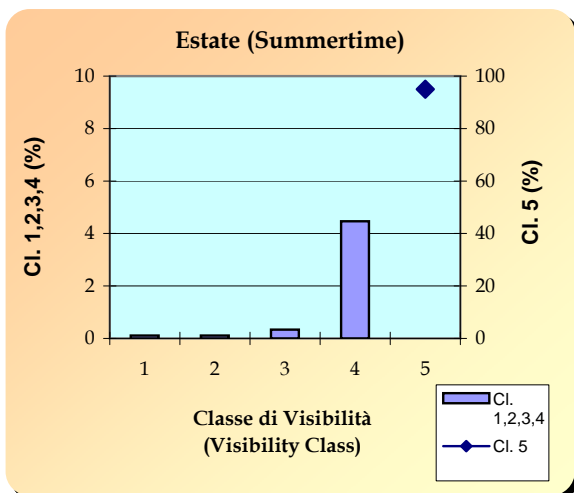
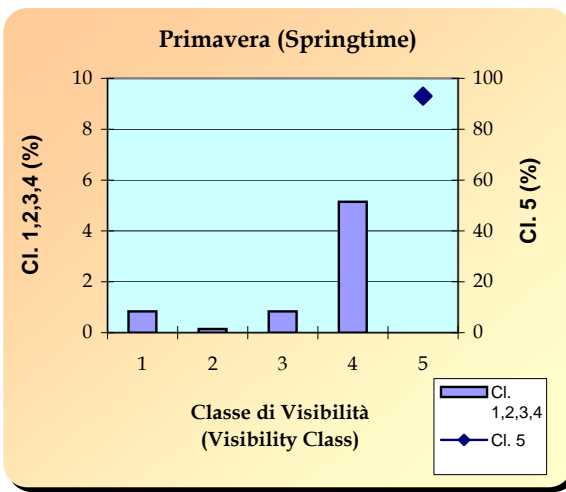
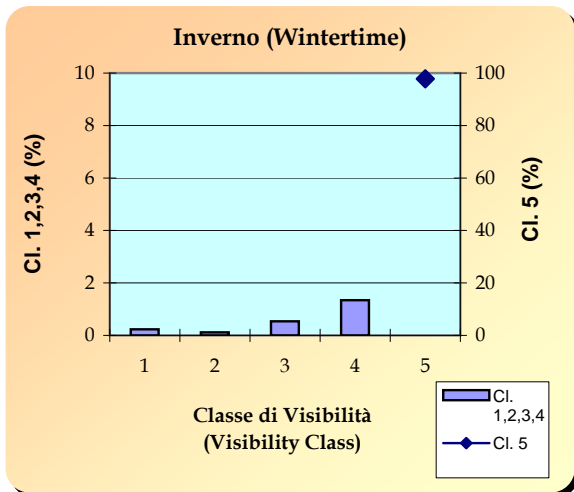
HH (Hour)	Inverno (Winter)	Primavera (Spring)	Estate (Summer)	Autunno (Autumn)
00	1.5	1.4	1.4	3.9
01	1.6	1.1	1.4	4.1
02	1.6	0.9	1.2	4.2
03	1.7	1.1	1.4	3.6
04	1.6	1.2	1.4	3.6
05	1.5	1.3	0.7	3.7
06	1.5	1.0	0.7	2.8
07	1.7	1.1	1.0	2.8
08	1.5	1.1	1.1	2.9
09	1.7	0.8	1.0	3.1
10	1.3	1.0	1.2	2.6
11	1.2	1.3	0.9	2.7
12	1.3	1.2	1.2	2.4
13	1.2	1.6	2.4	3.4
14	1.3	2.2	3.0	3.5
15	1.1	1.8	3.5	3.4
16	1.4	1.8	3.8	3.6
17	1.8	1.4	3.0	3.7
18	1.7	1.2	1.8	3.0
19	1.1	1.2	1.9	2.9
20	1.8	1.0	1.8	2.8
21	1.5	1.2	1.3	3.6
22	1.8	1.2	1.3	3.8
23	1.4	1.5	1.2	4.3

N.B.: l'assenza del dato non significa che il valore sia nullo, ma la scarsità dei dati presenti non ne consente una elaborazione statistica significativa.
(Missing data doesn't mean null value but the scarcity of the data in the database doesn't allow a significant statistics elaboration).



NAPOLI/CAPODICHINO (NA) 72 m. s.l.m. (a.s.l.)

PERCENTUALE DEI CASI DI VISIBILITA' COMPRESA NELLA RISPETTIVA CLASSE NEL PERIODO 1973-2000 ALLE 06 UTC
(VISIBILITY FREQUENCY FOR EACH CLASS IN THE PERIOD 1973-2000 AT 06 UTC)

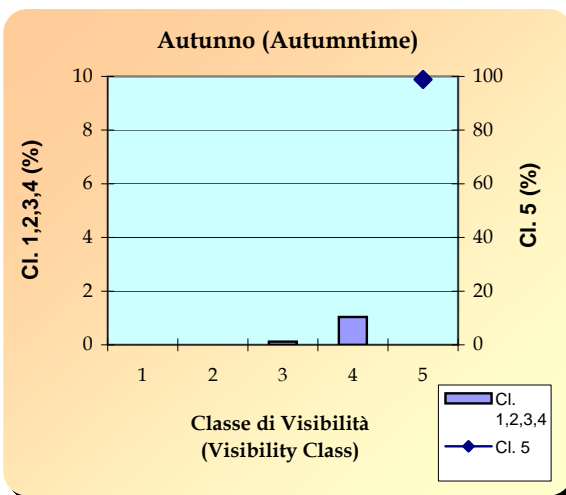
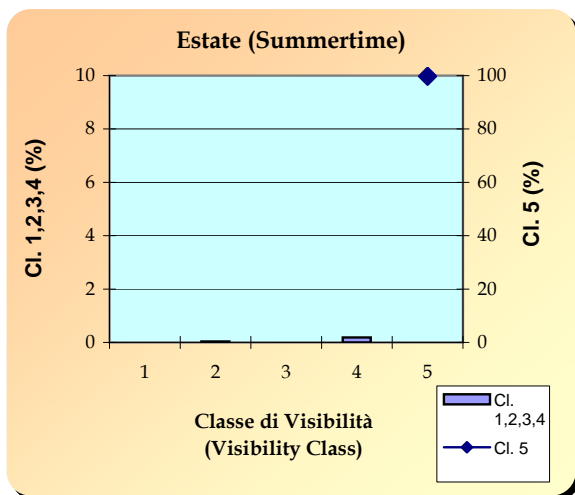
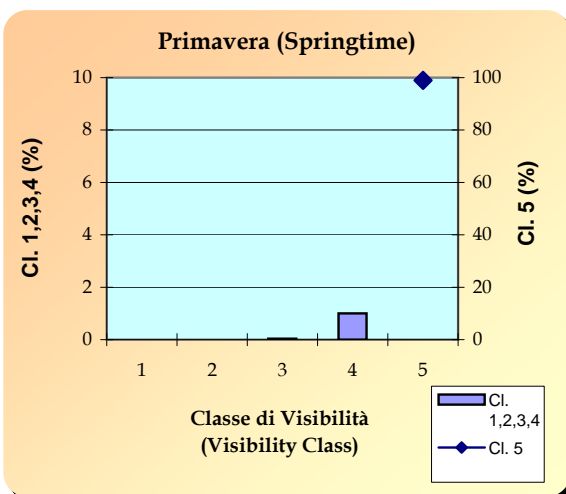
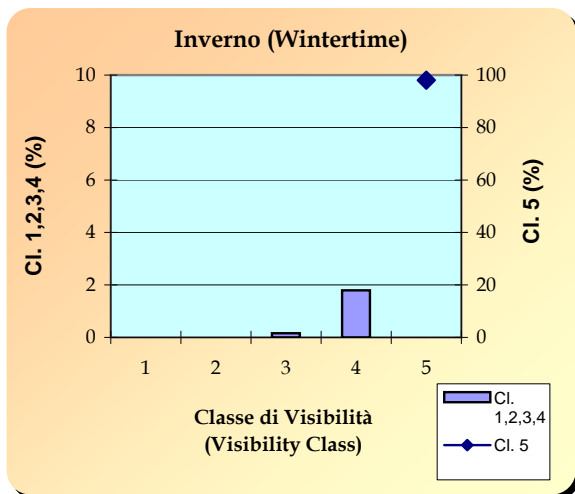


Ore 06 UTC (hour 06 UTC)					
Classe (Class)	Vis. (m) (Visibility)	Inverno (Winter)	Primavera (Spring)	Estate (Summer)	Autunno (Autumn)
1	0-100	0.2	0.8	0.1	0.2
2	101-200	0.1	0.1	0.1	0.2
3	201-1000	0.5	0.8	0.3	1.3
4	1001-2000	1.3	5.1	4.5	4.1
5	> 2000	97.8	93.0	95.0	94.2



NAPOLI/CAPODICHINO (NA) 72 m. s.l.m. (a.s.l.)

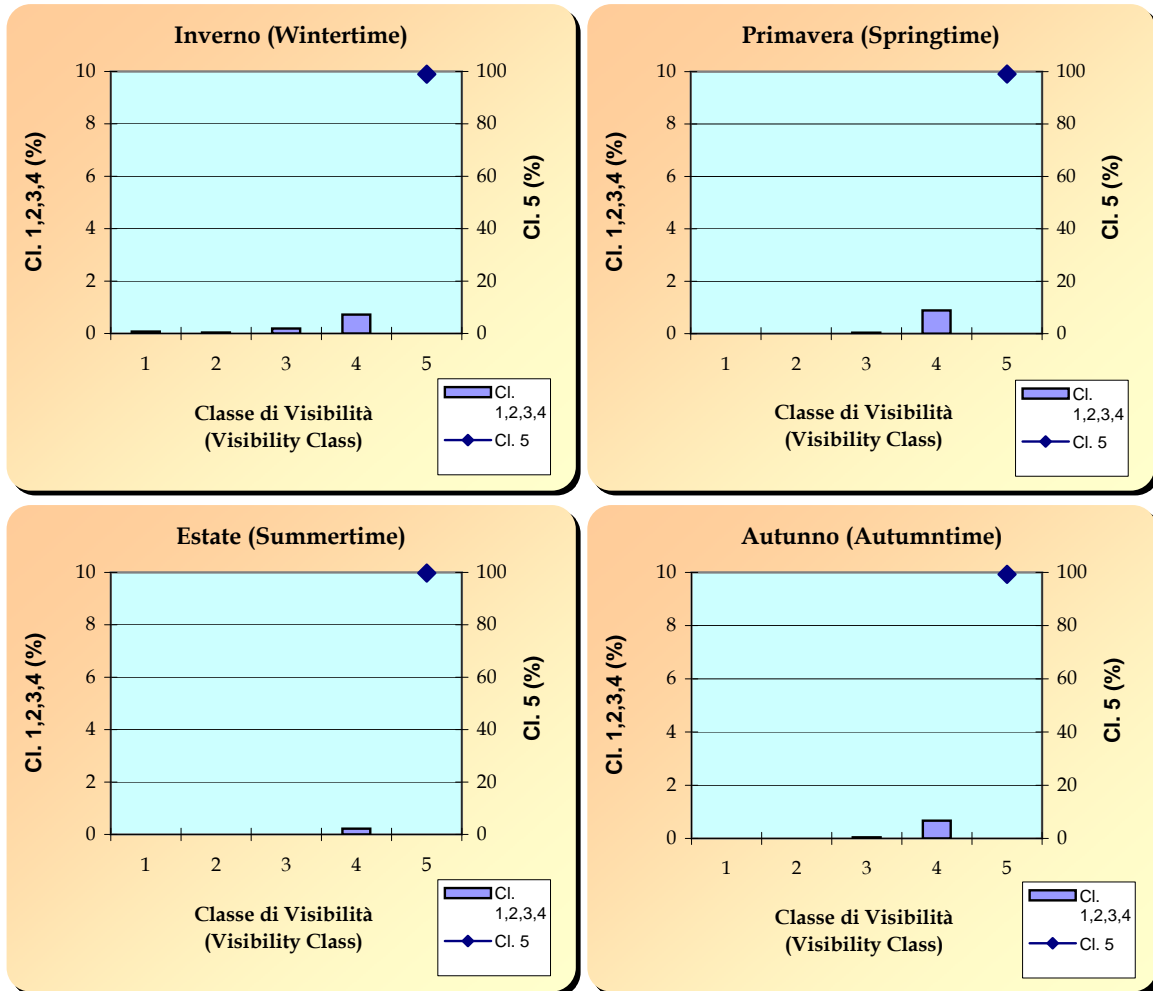
PERCENTUALE DEI CASI DI VISIBILITA' COMPRESA NELLA RISPETTIVA CLASSE NEL PERIODO 1973-2000 ALLE 12 UTC
(VISIBILITY FREQUENCY FOR EACH CLASS IN THE PERIOD 1973-2000 AT 12 UTC)



Ore 12 UTC (hour 12 UTC)					
Classe (Class)	Vis. (m) (Visibility)	Inverno (Winter)	Primavera (Spring)	Estate (Summer)	Autunno (Autumn)
1	0-100	0.0	0.0	0.0	0.0
2	101-200	0.0	0.0	0.0	0.0
3	201-1000	0.2	0.0	0.0	0.1
4	1001-2000	1.8	1.0	0.2	1.0
5	> 2000	98.0	99.0	99.8	98.8

**NAPOLI/CAPODICHINO (NA) 72 m. s.l.m. (a.s.l.)**

PERCENTUALE DEI CASI DI VISIBILITA' COMPRESA NELLA RISPETTIVA CLASSE NEL PERIODO 1973-2000 ALLE 18 UTC
(VISIBILITY FREQUENCY FOR EACH CLASS IN THE PERIOD 1973-2000 AT 18 UTC)



Ore 18 UTC (hour 18 UTC)					
Classe (Class)	Vis. (m) (Visibility)	Inverno (Winter)	Primavera (Spring)	Estate (Summer)	Autunno (Autumn)
1	0-100	0.1	0.0	0.0	0.0
2	101-200	0.0	0.0	0.0	0.0
3	201-1000	0.2	0.0	0.0	0.0
4	1001-2000	0.7	0.9	0.2	0.7
5	> 2000	99.0	99.1	99.8	99.3