

A vibrant underwater scene featuring a clownfish, a striped fish, and a red starfish on a coral reef. The clownfish is partially hidden within a large, yellowish-white sea anemone. The striped fish is positioned above it, and a bright red starfish with white spots is in the foreground. The background is filled with various green and brown coral and rocks.

**DEPARTMENT OF ENVIRONMENT & FORESTS
U T OF LAKSHADWEEP**

Presentation on Lakshadweep
Development Report
S.Thirunaavukarasu

A decorative graphic on the left side of the slide, consisting of a light green vertical bar and a dark blue horizontal bar with rounded ends.

CURRENT STATUS & CHALLENGES

An underwater photograph of a coral reef. The scene is filled with various types of coral, including branching and brain coral. Numerous fish are visible, including several prominent black and white striped surgeonfish. The water is clear and blue, with light filtering through from above, creating a dappled effect on the reef.

Lakshadweep Population - 64,429

Population Density : 2013/Sq km

Land Area 32 SqKm

Lagoon area - 4200 SqKm

Territorial Waters - 20,000 sq km

Exclusive Economic Zone-4,00,000 sq Km

ISLAND ECOSYSTEMS

LAND

LAGOON

CORAL REEFS

DEEP SEA

Biodiversity of Islands

- 248 Species of Plants
- 3 Species of Mangroves
- 68 Species of Crustaceans
- 92 Species of Echinoderms
- 148 Species of Corals
- 4 Species of Turtles
- 12 Species of Cetacean
- 101 Species of Birds
- 227 Species of Molluscs

Indian Coral Reef Regions

 Gulf of Kutch

 Gulf of Mannar

 Andaman & Nicobar Islands

 Lakshadweep Islands



Pressures and Challenges

Discharge of Wastes

Pollution due to Oil Spills

Sewage

Dredging

Illegal Collection of Sand/Boulders

Over Exploitation of Ground Water

Loss of Natural Vegetation

Lakshadweep Biodiversity and Strategy Action Plan

- Study of the Status of Corals and Lagoons (S&T, E&F)
- Management of Non-biodegradable Wastes (E&F,S&T& Panchayat)
- Enforcement of Laws (E&F, S&T)
- Active Role of LBMDB
- Awareness Programmes
- Shore Protection

ACTIVITIES

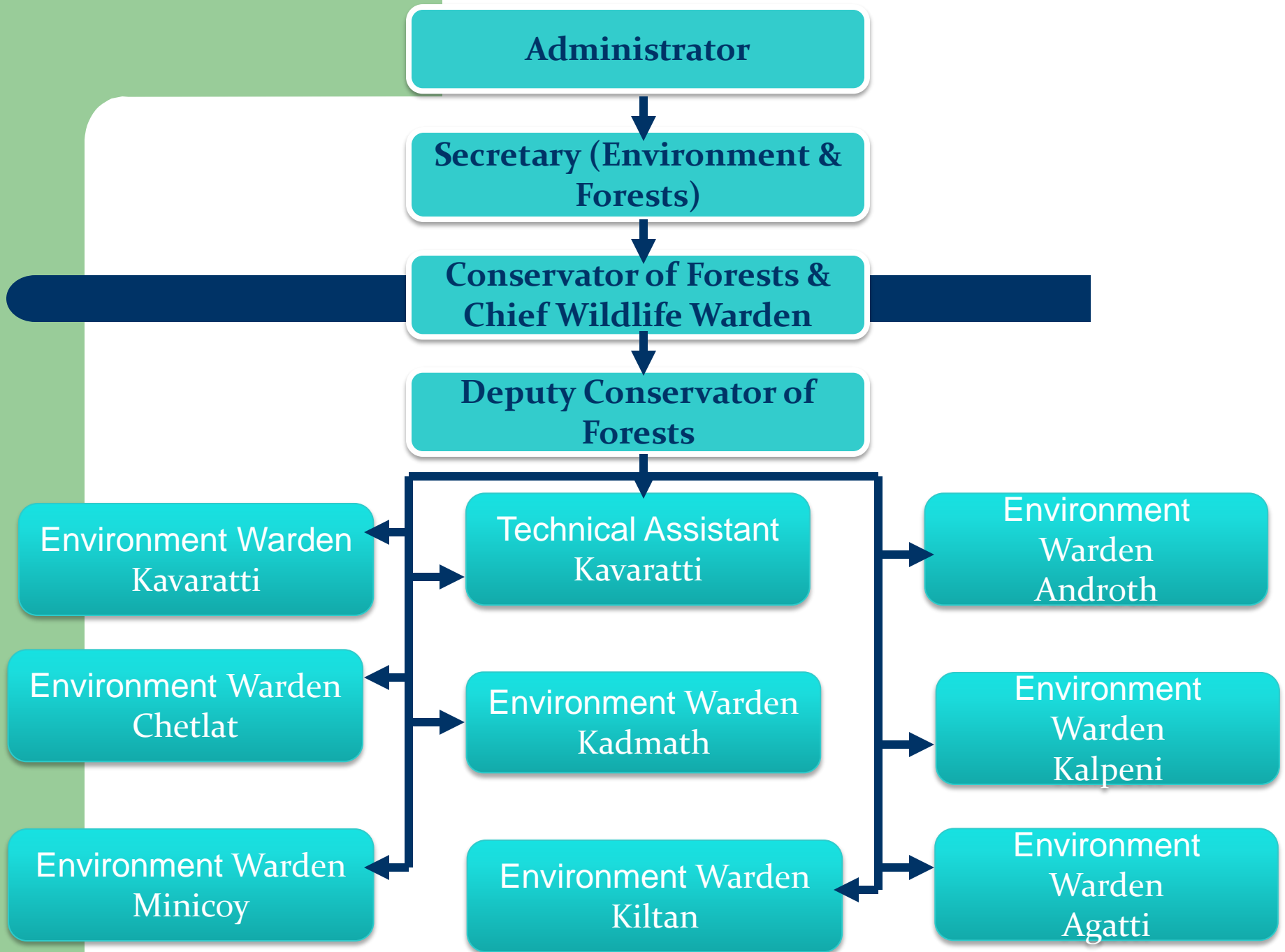
- 1. Implementation of Schemes and Programmes**
 - a. Social Forestry through District Panchayat
 - b. Eco-awareness Programmes
 - c. Collection and Disposal of Solid Wastes through Village Dweep Panchayats

- 2. Enforcement of Rules/Regulations**

Enforcement of Laws

Central and State Rules

- Environment Protection Act, 1986
- Wild life (Protection) Act, 1972
- Water (Prevention & Control of Pollution) Act, 1974 as
- The Water (Prevention & Control of Pollution) Rules, 1975
- The Water (Prevention & Control of Pollution) Cess Act, 1977
- The Water (Prevention & Control of Pollution) Cess Rules, 1978
- Air (Prevention & Control of Pollution) Act, 1981 as amended in 1987
- The Air (Prevention & Control of Pollution) Rules, 1982
- Coastal Regulation Rules, 1991.
- Lakshadweep Sanitation Conservancy Bye Law, 1998 under Panchayat Regulation Act, 1994.
- Lakshadweep Corals Protection Bye Law, 1998 under Panchayat Regulation Act, 1994.



XI FIVE YEAR PLAN

OUTLAY AT A GLANCE

Sl No	Name of Scheme	Final Grant (Rs in Lakh)					Total
		07-08	08-09	09-10	10-11	11-12	
a.	Environment Protection & Awareness	8.30	15.20	33.00	21.20	23.70	101.40
b.	Scientific management of Biodegradable & non biodegradable wastes	23.90	45.00	40.90	48.10	77.50	235.40
c	Corals Wildlife & Lagoon Conservation	12.80	07.80	43.10	27.60	53.80	145.10
d	Civil Works	00	00	00	56.10	145.00	201.10
e	Forestry & Wildlife	19.00	50.00	70.00	90.00	100.00	329.00
Total		64.00	118.00	187.00	243.00	400.00	1012.00

Research Works on Corals and Lagoons

- Coral Reef Survey and Biodiversity Assessment by **Lakshadweep Coral Reef Monitoring Net Work (LCRMN- Lakshadweep Administration)**
- Socio economic monitoring and livelihoods project in Lakshadweep islands by **Centre for Action Research on Environment Science & Society (Vineeta Hoon)**
- Conservation of Giant Clam through Community Reserve in Lakshadweep Islands by **Bombay Natural History Society (Deepak Apte)**
- Research on fish species diversity and ecology in coral reefs, sea grass meadows and other near shore habitats of Lakshadweep Islands by **Nature Conservation Foundation (Rohan Arthur)**

Current Management Initiatives

- Biological Toilets
- Fish Aggregation Devices
- Beach Stability Projects
- Rainwater Harvesting, Water Conservation
- Low Thermal Desalination Plants
- Establishment of Incinerators
- EIA's on most development activities
- Restricted Tourism
- Usage of Organic Manures.
- Implementation of non-biodegradable Waste disposal system
- Building Material Board

- Restoration of damaged Reefs by Coral Transplantation.
- Sustainable Developmental Policies
- Banning of Plastic Carry Bags
- Integrated Coastal Zone Management
- Plantation of locally available seedlings under Social Forestry scheme
- Lakshadweep Action Plan on Climate Change

Projected Future Issues

- Population Rise
- Housing development
- Sewage, Waste Disposal
- Increased Tourism
- Harbour development
- Climate Change
- Deep Sea fishing

Recommendations

- **Afforestation (E&F, Agriculture, Panchayat)**
(Agro Forestry Models, Home gardens)
- **Research (S&T, E&F)**
(Documentation & listing of bio-resources)
- **Protection & Conservation (E&F,S&T)**
(Monitoring & Preventive Measures)
- **Waste Disposal (Panchayat, E&F)**
- **Shore Protection (LPWD, E&F)**
(Eco-friendly Biological measures)

Challenges

- **Inadequate Staff Strength**
(Proposal for creation of 67 No Posts already submitted)
- **Infrastructure Development**
(Buildings for Unit offices, Vehicles, Ferry Vessels)
- **Data Base on Bio-logical resources**
(Documentation and Reef Management Plans)
- **Specialised Training**

THANK



YOU