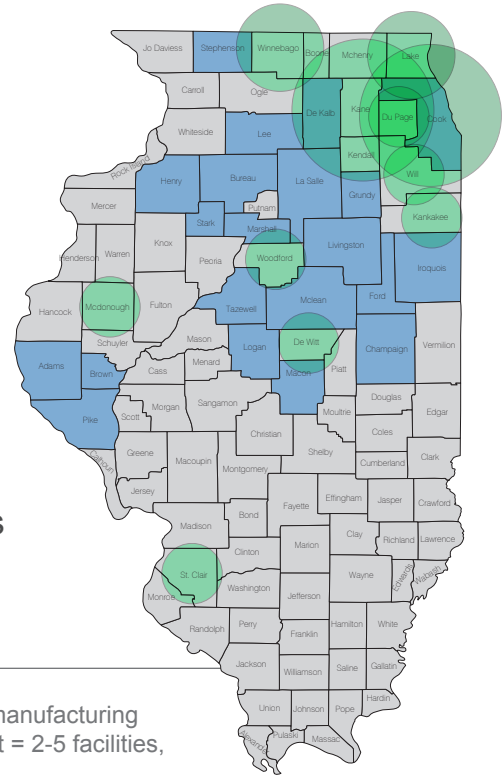


WIND ENERGY FACTS: ILLINOIS

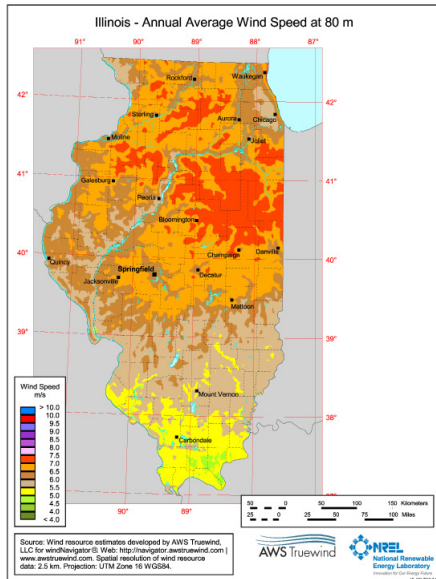
Illinois is a leader in wind energy capacity and manufacturing

Illinois is a national leader both in terms of installed capacity of wind power and wind turbine manufacturing. The state ranks fourth for overall installed wind capacity in the U.S., with great potential to increase the amount of electricity produced from wind. Investment in wind energy has brought jobs to the state and attracted major wind energy manufacturers to locate in Illinois.



Blue counties have wind projects.
Green dots represent online wind energy manufacturing facilities. (Small dot = 1 facility, medium dot = 2-5 facilities, large dot = 5-10 facilities.)

WIND PROJECTS AND GENERATION



Currently online:	3,055 megawatts (MW)
Added YTD 2012:	314 MW
Added in 2011:	692 MW
Under construction:	480 MW
Wind projects in queue:	11,924 MW

Illinois ranked second to California for most new wind energy capacity installed in 2011, and led the nation in number of new turbines installed with 404.

Percentage of Illinois power provided by wind in 2011: 3.2%

Equivalent number of homes Illinois wind farms now power: 730,000

WIND RESOURCE

State wind resource: 249,882 MW at 80 meters hub heights

Illinois' wind resource is ranked 14th in the US and according to a resource assessment from the National Renewable Energy Lab, Illinois' wind resource could provide over 525 percent of the state's current electricity needs.

The state has transmission connections to both the PJM and MISO regional power grids, and strong wind resources near big cities such as Chicago, Springfield, Bloomington, Joliet and Champaign-Urbana.

FOR MORE INFORMATION, PLEASE CONTACT: windmail@awea.org

AMERICAN WIND ENERGY ASSOCIATION
WWW.AWEA.ORG | 202.383.2500 | 1501 M St. NW, SUITE 1000, WASHINGTON, D.C.



WIND ENERGY FACTS: ILLINOIS

ECONOMIC AND ENVIRONMENTAL BENEFITS

Investment in wind power is an investment in jobs, including jobs in operations and maintenance, construction, manufacturing and many support sectors. In addition, wind power projects produce lease payments for landowners and increase the tax base of communities.

- Total direct and indirect jobs supported in 2011: 6,001-7,000
- Annual property tax payments by wind project owners: nearly \$19 million
- Annual land lease payments: over \$8 million

Generating wind power creates no emissions and uses no water. The wind power installed in Illinois will avoid 5.2 million metric tons of carbon dioxide annually.

MANUFACTURING SECTOR

Illinois has already attracted investment from three major wind industry players, including tower manufacturer Trinity Structural Towers and gearbox manufacturer Winergy, allowing many smaller manufacturers to get involved in the wind energy supply chain. At least 33 facilities in Illinois currently manufacture components for the wind energy industry. Over 1,000 workers in Illinois are employed in the wind energy manufacturing sector.

ILLINOIS POLICY

The Illinois state renewable portfolio standard (RPS) was first enacted in 2007, requiring investor-owned electric utilities, and later alternative retail electric suppliers, to generate 25% of their 2025 electricity from renewable resources. It remains one of the strongest state standards in the country, and as other states to the west meet their standards for now, developers have focused more on meeting the Illinois standard.

EVENTS

AWEA is holding the first ever Midwest Wind Energy Markets Seminar March 6-7, 2012 in Chicago. The industry's flagship event, WINDPOWER, will bring thousands of participants to Chicago May 5-8, 2013.

AWEA's WINDPOWER Conference and Exposition last held in Chicago during May 2009, attracted over 23,000 participants. It was the largest annual wind energy conference ever.

Illinois exhibitors at WINDPOWER Conference and Exhibition 2012: 50

Published October 2012 | Calculations based on national and state averages

FOR MORE INFORMATION, PLEASE CONTACT: windmail@awea.org

AMERICAN WIND ENERGY ASSOCIATION
WWW.AWEA.ORG | 202.383.2500 | 1501 M ST. NW, SUITE 1000, WASHINGTON, D.C.

