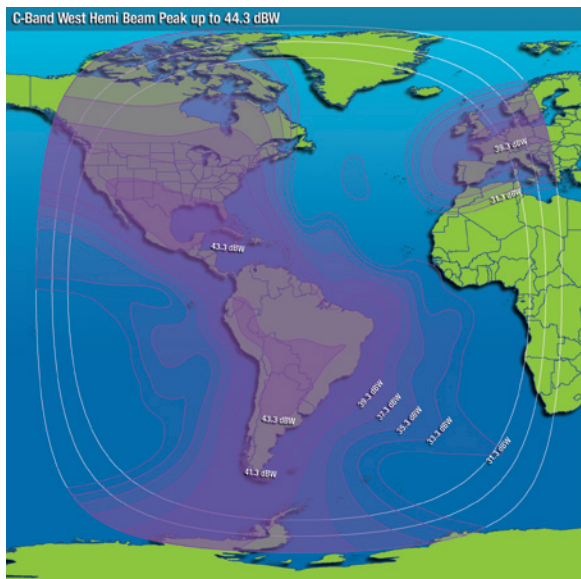


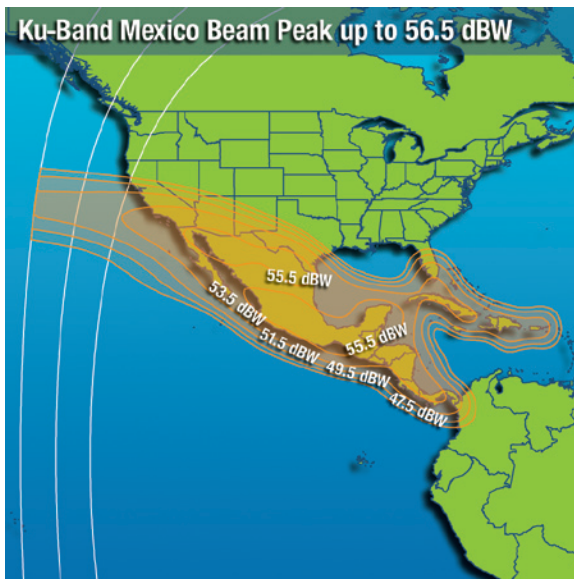
# Serving Intelsat customers throughout the Americas & Europe

As part of Intelsat's fleet replacement and expansion plans, the Intelsat 21 (IS-21) satellite is scheduled to start service at 302°E in 2012, and will replace the IS-9 satellite. IS-21 will continue to serve the Latin America and Caribbean media community with the highest cable head-end penetration in the region, as well as hosting a thriving DTH community. IS-21 will also carry a mobility beam to provide South Atlantic coverage in Intelsat's global Ku-band mobility fabric.

## IS-21 at 302°E – C-Band West Hemi\*



## IS-21 at 302°E – Ku-Band Mexico\*

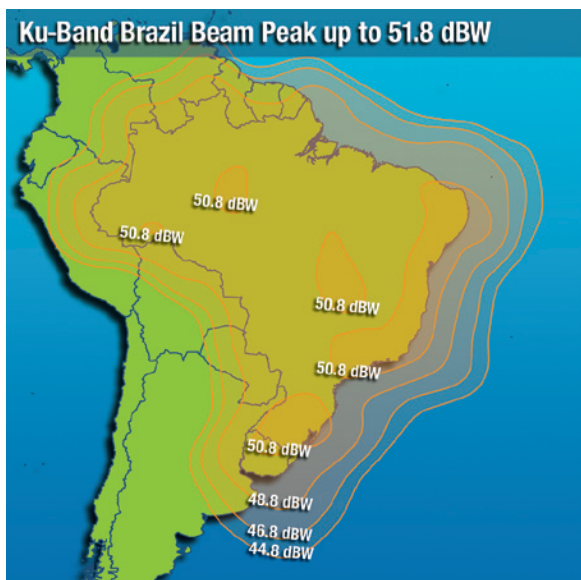


### C-Band Key Parameters

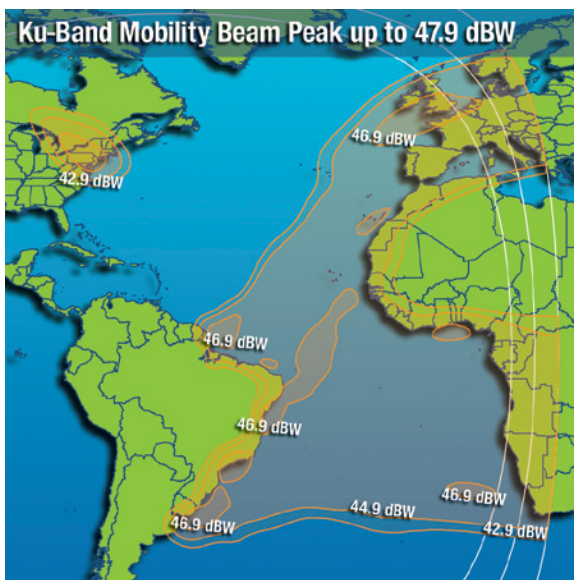
- Transponders: 24 x 36 MHz
- Polarization: Linear – Horizontal or Vertical
- Downlink Frequency: 3700 to 4200 MHz
- Typical Edge of Coverage e.i.r.p.: > 31.3 dBW
- Uplink Frequency: 5925 to 6425 MHz
- Typical Edge of Coverage G/T: > -9.8 dB/K
- Edge of Coverage SFD Range: -98.2 to -68.2 dBW/m<sup>2</sup>

\*This is a future spacecraft deployment. All payload performance values are preliminary.

## IS-21 at 302°E – Ku-Band Brazil\*



## IS-21 at 302°E – Ku-Band Mobility\*

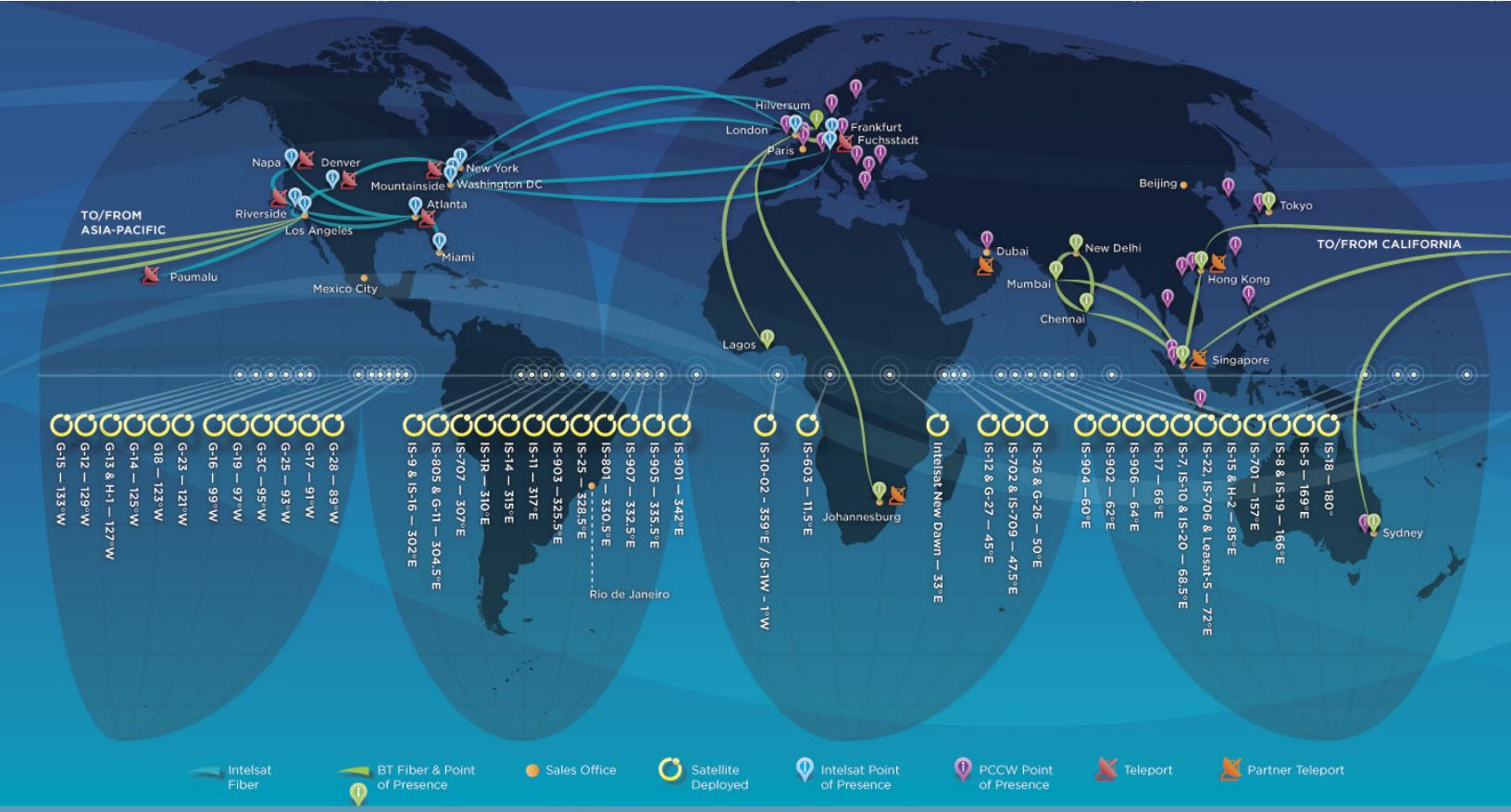


### Ku-Band Key Parameters

- Transponders: 36 active transponders, in combination of 36, 27 and 54 MHz channels. (up to 36 equivalent of 36 MHz units)
- Polarization: Linear – Horizontal or Vertical
- Downlink Frequency: 11.45 to 12.20 GHz
- Typical Edge of Coverage e.i.r.p.: Brazil: > 45.5 dBW (Horiz.) > 46.5 dBW (Vert.) Mobility: > 43.4 dBW
- Uplink Frequency: 14.0 to 14.50 GHz
- Typical Edge of Coverage G/T: Brazil: > -0.5 dB/K Mobility: > -1.0 dB/K
- Edge of Coverage SFD Range: Brazil: -101.5 to -73.5 dBW/m<sup>2</sup> Mobility: -101.0 to -73.0 dBW/m<sup>2</sup>

\*This is a future spacecraft deployment. All payload performance values are preliminary.

# Intelsat Global Infrastructure



## About Intelsat

Intelsat is the leading provider of fixed satellite services worldwide. For over 45 years, Intelsat has been delivering information and entertainment for many of the world's leading media and network companies, multinational corporations, Internet service providers and governmental agencies. Intelsat's satellite, teleport and fiber infrastructure is unmatched in the industry, setting the standard for transmissions of video, data and voice services. From the globalization of content and the proliferation of HD, to the expansion of cellular networks and broadband access, with Intelsat, advanced communications anywhere in the world are closer, by far.

## SALES CONTACTS

### Africa

+27 11-535-4700  
sales.africa@intelsat.com

### Asia-Pacific

+65 6572-5450  
sales.asiapacific@intelsat.com

### Europe & Middle East

+44 20-3036-6700  
sales.eme@intelsat.com

### Latin America & Caribbean

+1 305-445-5536  
sales.lac@intelsat.com

### North America

+1 202-944-7546  
sales.na@intelsat.com