

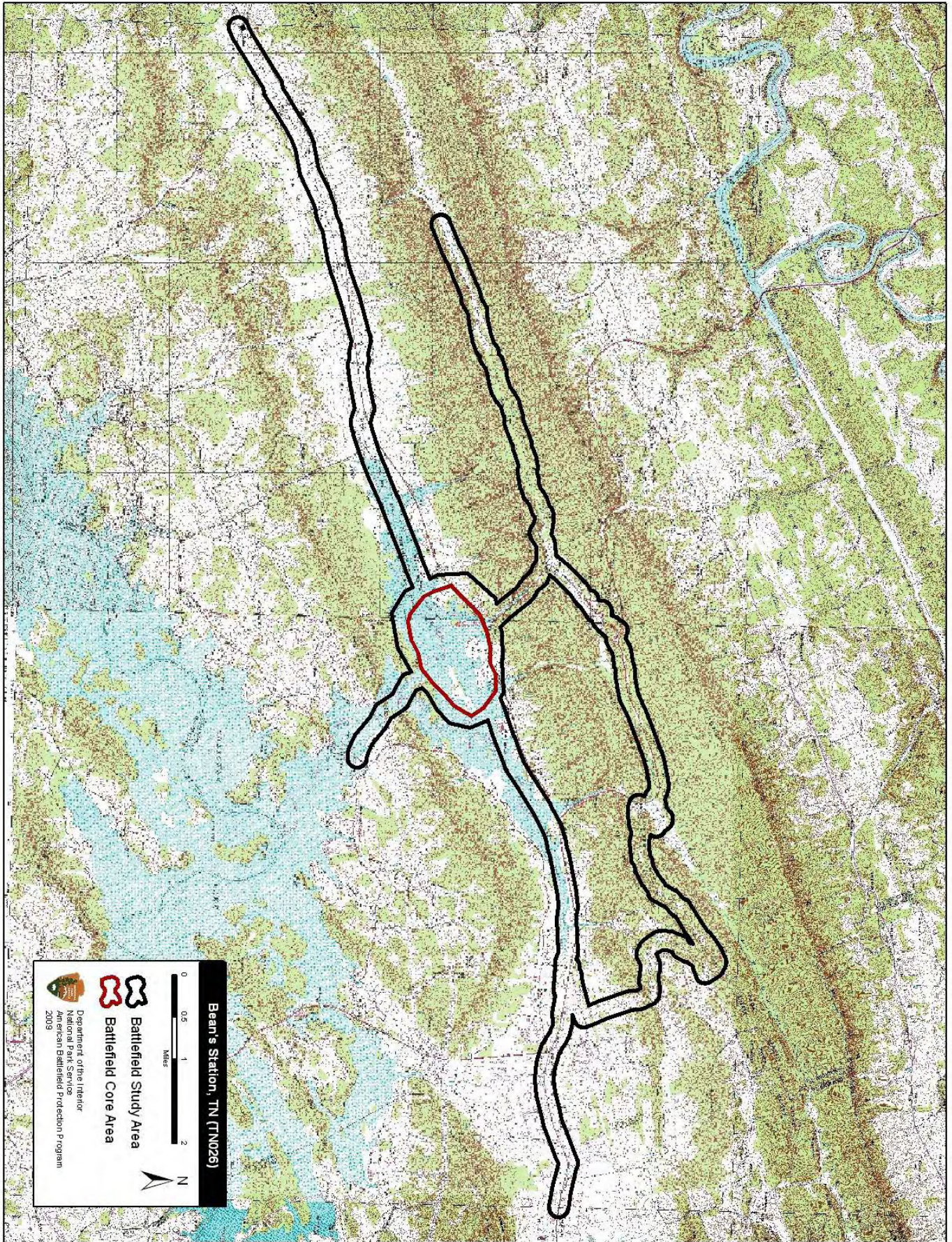
Individual Battlefield Profiles

Battlefield Profile Glossary

Location	County or city in which the battlefield is located.
Campaign	Name of military campaign of which the battle was part. Campaign names are taken from <i>The War of the Rebellion: a Compilation of the Official Records of the Union and Confederate Armies</i> .
Battle Date(s)	Day or days upon which the battle took place, as determined by the Civil War Sites Advisory Commission.
Principal Commanders	Ranking commanders of opposing forces during the battle.
Forces Engaged	Name or description of largest units engaged during the battle.
Results	Indicates battle victor or inconclusive outcome.
Study Area	Acres within the Study Area, as determined by the ABPP, that represent the historic extent of the battle upon the landscape.
Potential National Register Lands	Acres of land that retain historic character and may be eligible for listing in the National Register of Historic Places, as determined by ABPP.
Protected Lands	Estimated acres (based on questionnaires and GIS) of battlefield land set aside or placed under permanent easement since the Civil War for the purposes of maintaining the historic character of the landscape and for preventing future impairment or destruction of the landscape and historic features.
Publicly Accessible Lands	Estimated acres (based on responses to questionnaires) maintained for public visitation.
Management Area	Name of historic site, park, or other area maintained for resource protection and/or public visitation.
Friends Group(s)	Name of local advocacy organization(s) that support preservation activities at/for the battlefield.
Preservation Activities Since 1993	Indicates which types of preservation activities have taken place at the battlefield since 1993 (based on responses to questionnaires).
Public Interpretation Since 1993	Indicates which types of interpretation/educational activities have taken place at the battlefield since 1993 (based on responses to questionnaires).
Condition Statement	The ABPP's assessment of the overall condition of the battlefield's Study Area (based on field surveys and responses to questionnaires).
Historical Designation	Notes the most prestigious historical designation the battlefield has received (i.e. national park unit, National Historic Landmark, or National Register of Historic Places).

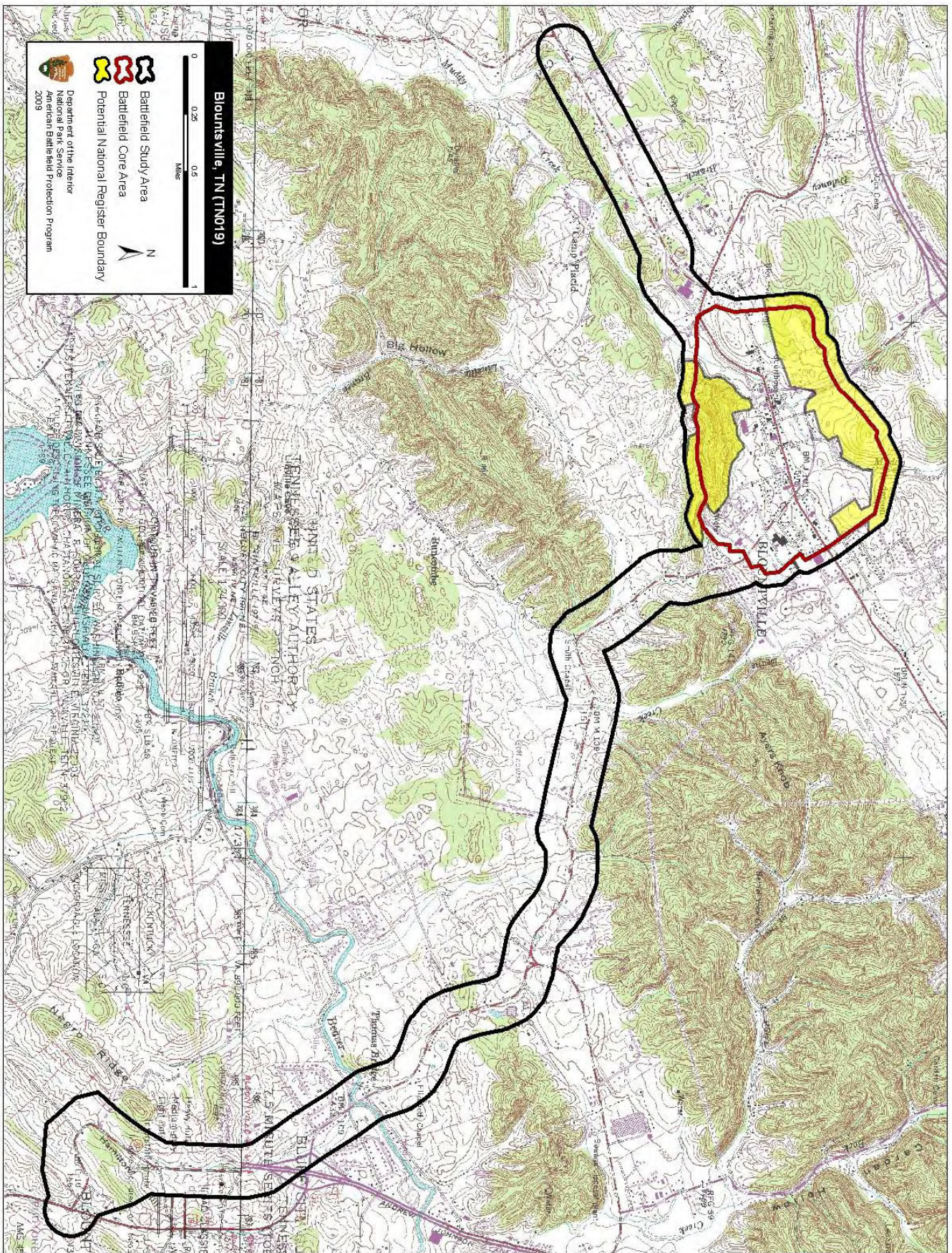
Bean's Station (TN026)

Location	Grainger County
Campaign	Knoxville Campaign (1863)
Battle Date(s)	December 14, 1863
Principal Commanders	Brig. Gen. J. M. Shackelford [US]; Lt. Gen. James Longstreet [CS]
Forces Engaged	Cavalry Corps, Department of the Ohio [US]; Longstreet's 1 st Corps Army of Northern Virginia [CS]
Results	Confederate victory
Study Area	5347.21 acres The revised Study Area includes the Confederate approach and pursuit routes and Union pursuit and retreat routes.
Potential National Register Lands	0.00 acres
Protected Lands	None
Publicly Accessible Lands	None
Management Area	None
Friends Group(s)	Lakeway Civil War Preservation Association
Preservation Activities Since 1993	Advocacy Cultural Resource Surveys and Inventories Fundraising ✓ Interpretation Projects Land or Development Rights Purchased Legislation ✓ Planning Projects Research and Documentation
Public Interpretation Since 1993	Brochure(s) Driving Tour Living History Maintained Historic Features/Areas Visitor Center Walking Tour/Trails Wayside Exhibits/Signs Website Other
Condition Statement	Landscape and terrain have been altered beyond recognition since the period of significance. Commemorative opportunities exist.
Historical Designation	None



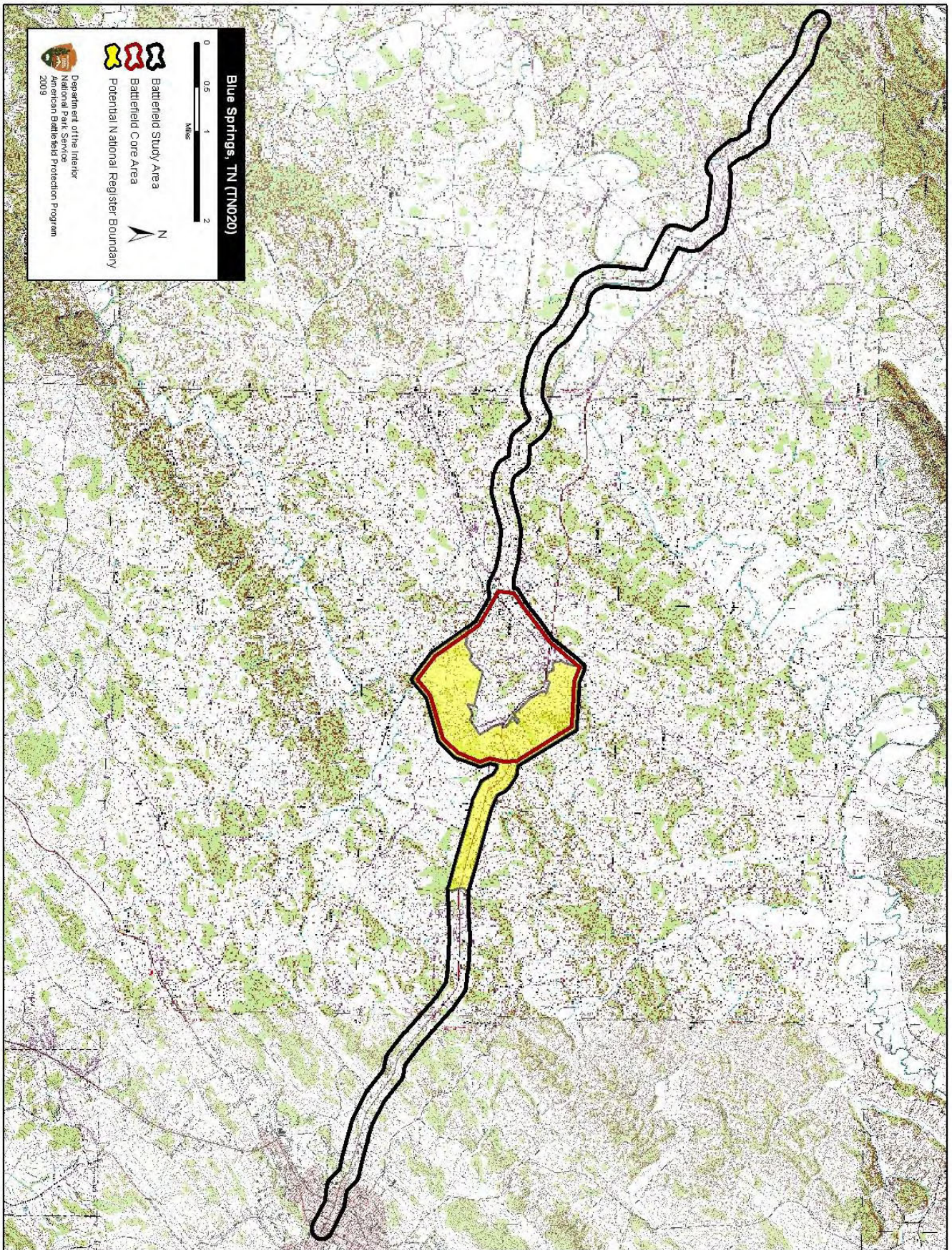
Blountsville (TN019)

Location	Sullivan County
Campaign	East Tennessee Campaign (1863)
Battle Date(s)	September 22, 1863
Principal Commanders	Col. John W. Foster [US]; Col. James E. Carter [CS]
Forces Engaged	2nd Brigade, 4th Division, XXIII Army Corps, Department of the Ohio [US]; 1st Tennessee Cavalry Regiment and Artillery (approx. 1,200) [CS]
Results	Union victory
Study Area	1,549.78 acres The revised Study Area includes the lengthy Confederate approach and withdrawal route.
Potential National Register Lands	232.57 acres
Protected Lands	None
Publicly Accessible Lands	None
Management Area	None
Friends Group(s)	None
Preservation Activities Since 1993	Advocacy ✓ Cultural Resource Surveys and Inventories Fundraising ✓ Interpretation Projects Land or Development Rights Purchased Legislation ✓ Planning Projects Research and Documentation
Public Interpretation Since 1993	Brochure(s) Driving Tour Living History Maintained Historic Features/Areas Visitor Center Walking Tour/Trails ✓ Wayside Exhibits/Signs Website(s) Other
Condition Statement	Much of the landscape has been altered and fragmented, leaving some essential features. Blountsville is under severe development pressure.
Historical Designation	None



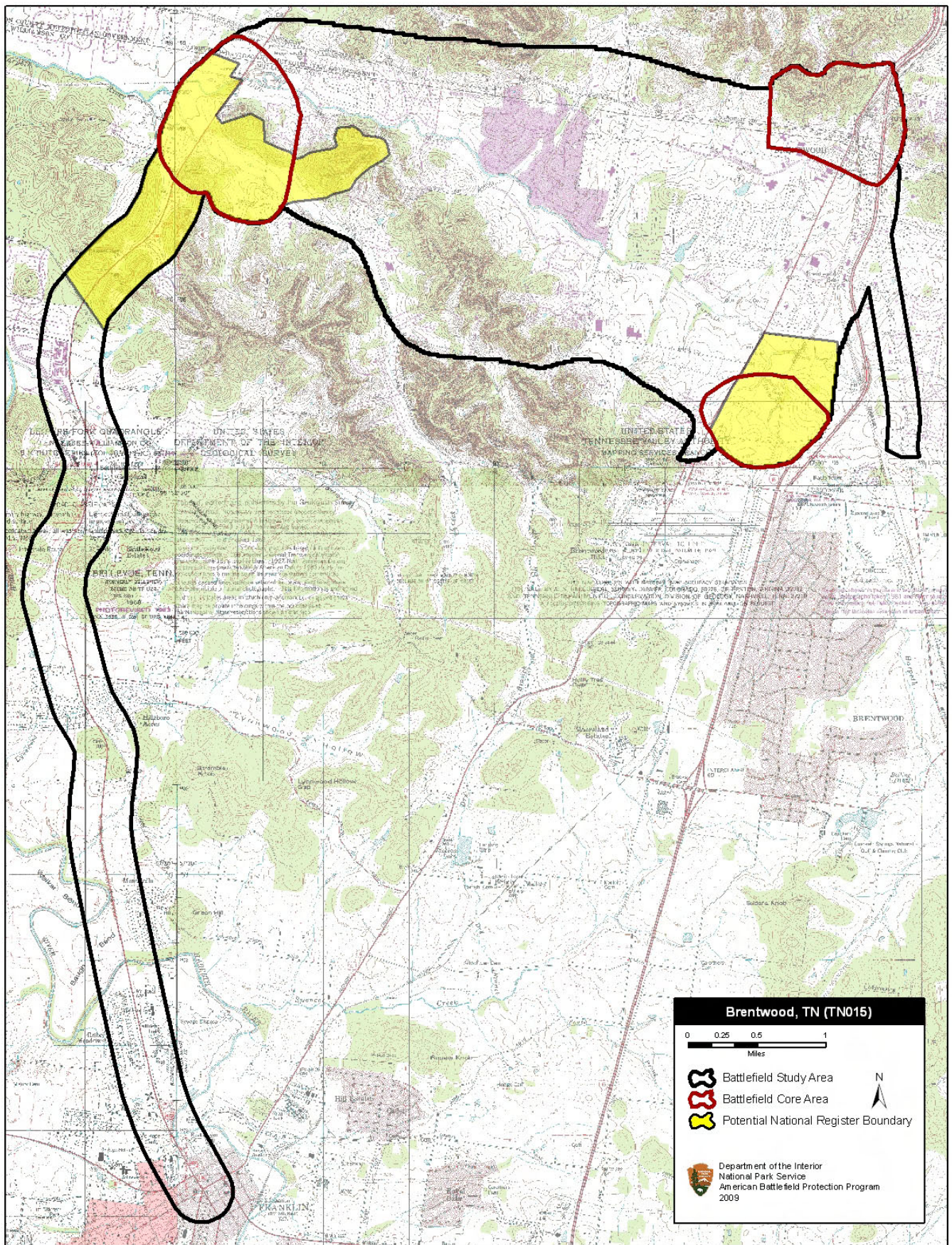
Blue Springs (TN020)

Location	Greene County
Campaign	East Tennessee Campaign (1863)
Battle Date(s)	October 10, 1863
Principal Commanders	Maj. Gen. Ambrose E. Burnside [US]; Brig. Gen. John S. Williams [CS]
Forces Engaged	Department of the Ohio [US]; 1st Tennessee Volunteer Cavalry Regiment, 4th Kentucky Cavalry Regiment, and some home guard troops and artillery [CS]
Results	Union victory
Study Area	3,715.33 acres
Potential National Register Lands	1,118.17 acres
Protected Lands	None
Publicly Accessible Lands	None
Management Area	None
Friends Group(s)	None
Preservation Activities Since 1993	<ul style="list-style-type: none"> Advocacy Cultural Resource Surveys and Inventories Fundraising Interpretation Projects Land or Development Rights Purchased Legislation Planning Projects Research and Documentation
Public Interpretation Since 1993	<ul style="list-style-type: none"> Brochure(s) Driving Tour Living History Maintained Historic Features/Areas Visitor Center Walking Tour/Trails ✓ Wayside Exhibits/Signs Website(s) Other
Condition Statement	Portions of landscape have been altered, but most essential features remain. Changes in land use are accelerating.
Historical Designation	None



Brentwood (TN015)

Location	Williamson County
Campaign	Middle Tennessee Operations (1863)
Battle Date(s)	March 25, 1863
Principal Commanders	Lt. Col. Edward Bloodgood [US]; Brig. Gen. Nathan Bedford Forrest [CS]
Forces Engaged	Detachments of the 22nd Wisconsin Volunteer Infantry, 33 rd Indiana, and 19th Michigan Volunteer Infantry regiments, 1st Division, 1st Cavalry Corps (approx. 400) [US]; Forrest's Division [CS]
Results	Confederate victory
Study Area	9,589.14 acres The revised Study Area includes the Confederate cavalry approach on the Hillsboro Pike.
Potential National Register Lands	1,346.71 acres
Protected Lands	10.32 acres Tennessee Department of Environment and Conservation, fee simple
Publicly Accessible Lands	10.32 acres
Management Area	Radnor Lake Natural Area and Wildlife Refuge, Tennessee Department of Environment and Conservation
Friends Group(s)	None
Preservation Activities Since 1993	Advocacy Cultural Resource Surveys and Inventories Fundraising ✓ Interpretation Projects Land or Development Rights Purchased Legislation ✓ Planning Projects Research and Documentation
Public Interpretation Since 1993	Brochure(s) Driving Tour Living History Maintained Historic Features/Areas Visitor Center Walking Tour/Trails ✓ Wayside Exhibits/Signs Website(s) Other
Condition Statement	Much of the landscape has been altered and fragmented, leaving some essential features. Surviving lands need immediate protection.
Historical Designation	None



Bull's Gap (TN033)

Location	Hamblen County and Greene County
Campaign	Breckinridge's Advance into East Tennessee (1864)
Battle Date(s)	November 11-13, 1864
Principal Commanders	Brig. Gen. Alvan C. Gillem [US]; Maj. Gen. John C. Breckinridge [CS]
Forces Engaged	Governor's Guard Brigade, State of Tennessee [US]; Department of Western Virginia and East Tennessee (approximately 2,400) [CS]
Results	Confederate victory
Study Area	12,405.25 acres The revised Study Area includes the Confederate advance, the Union retreat route, and the area where Union reinforcements arrived and joined Gillem's force.
Potential National Register Lands	3,205.43 acres
Protected Lands	None
Publicly Accessible Lands	None
Management Area	None
Friends Group(s)	Lakeway Civil War Preservation Association (2006)
Preservation Activities Since 1993	Advocacy ✓ Cultural Resource Surveys and Inventories ✓ Fundraising Interpretation Projects Land or Development Rights Purchased Legislation ✓ Planning Projects Research and Documentation
Public Interpretation Since 1993	✓ Brochure(s) ✓ Driving Tour Living History Maintained Historic Features/Areas Visitor Center Walking Tour/Trails ✓ Wayside Exhibits/Signs Website(s) Other
Condition Statement	Portions of landscape have been altered, but most essential features remain. Bull's Gap offers an excellent opportunity for preservation of most of the Core Area and surrounding lands in the Study Area.
Historical Designation	National Register of Historic Places, Bull's Gap Fortification (1998)

