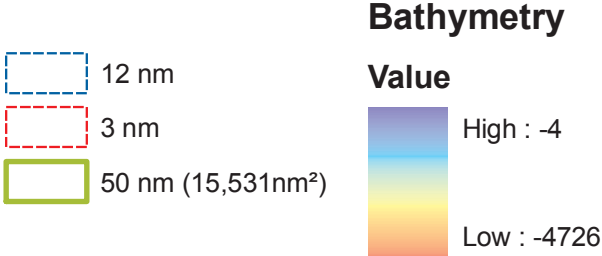
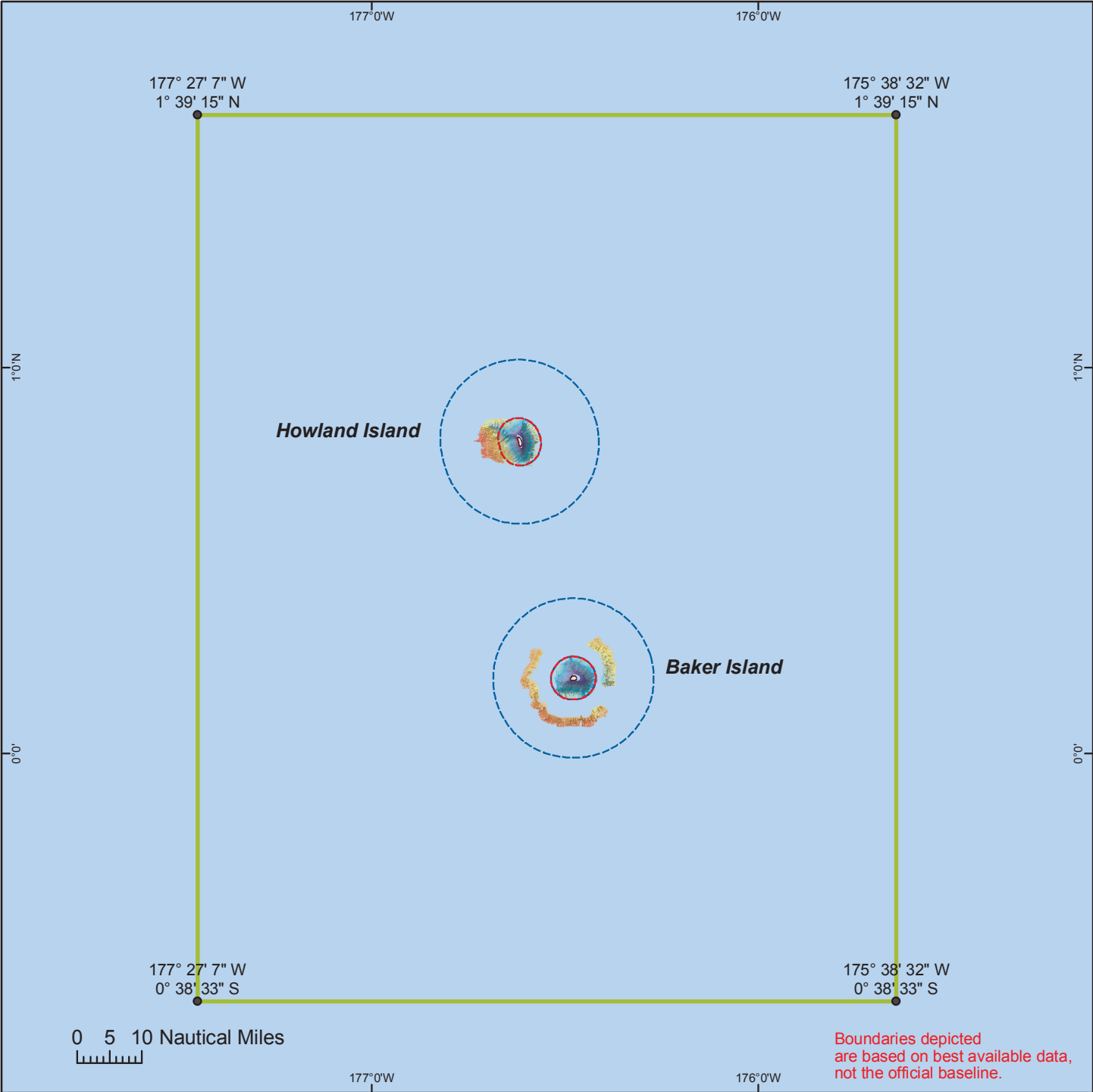
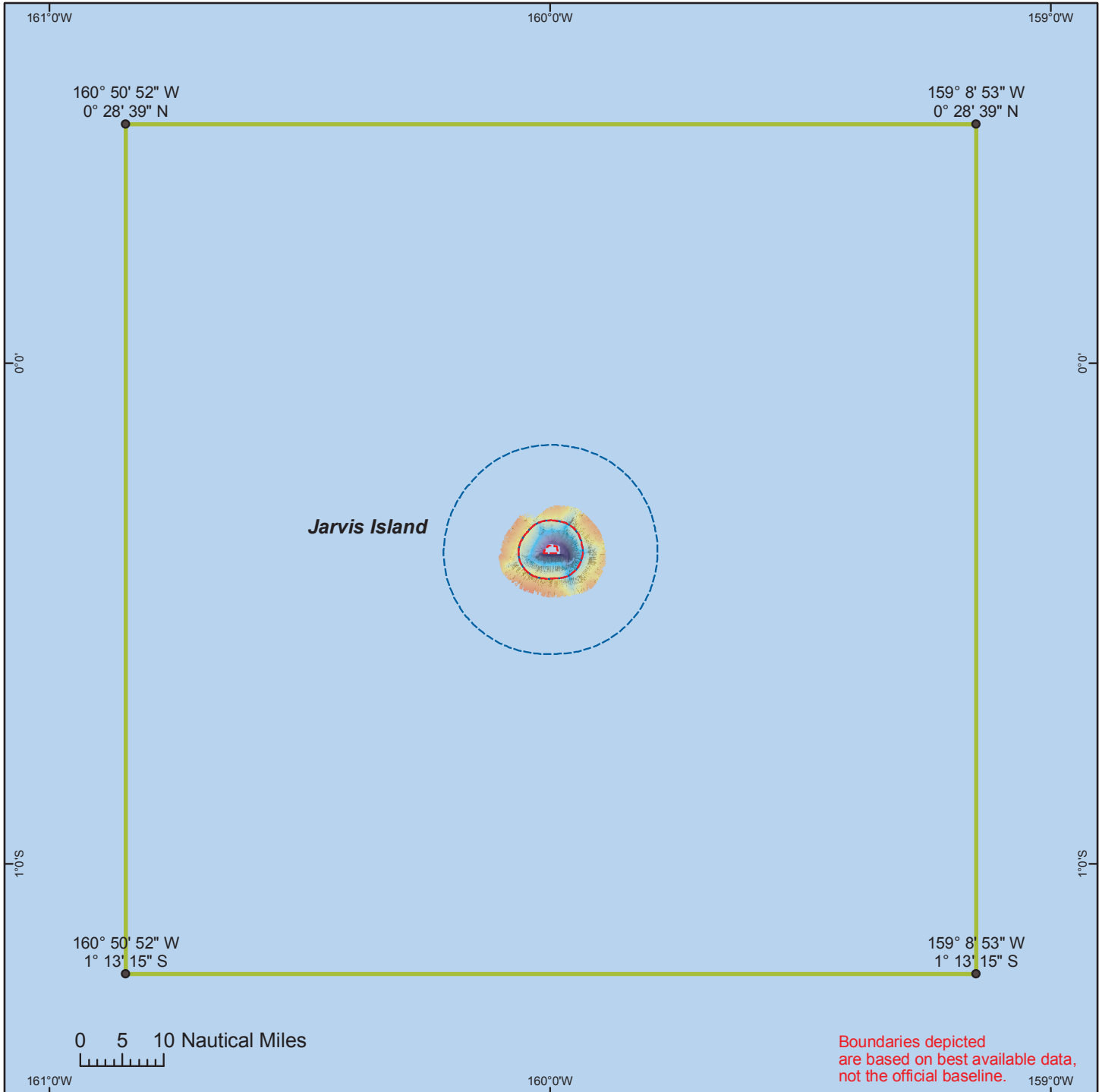





Pacific Remote Islands Marine National Monument

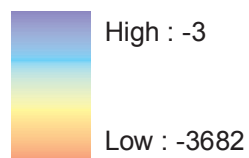


Pacific Remote Islands Marine National Monument

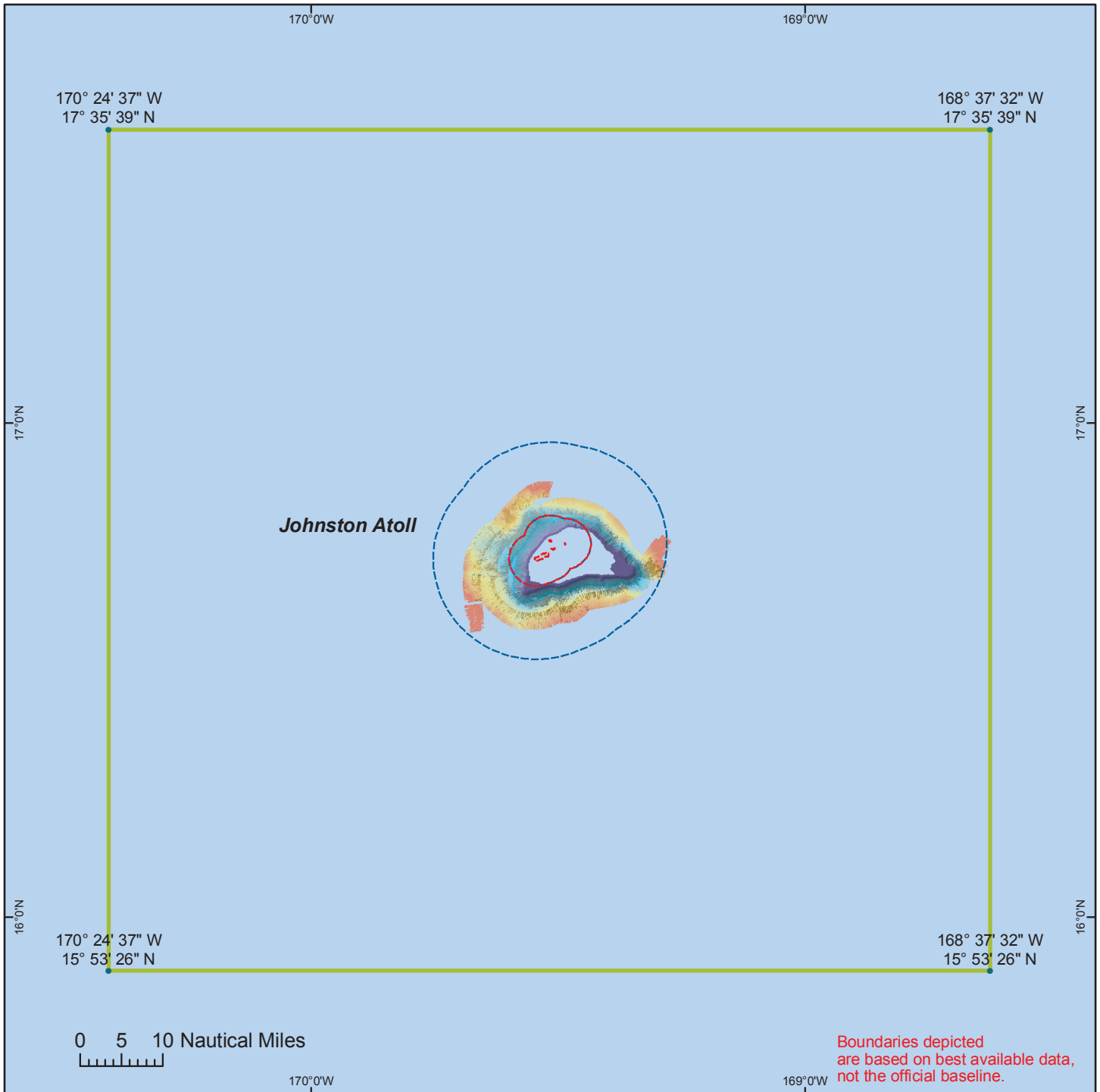


Bathymetry

-  12 nm
-  3 nm
-  50 nm (10,433 nm²)



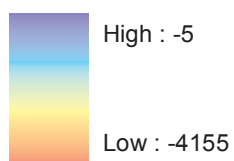
Pacific Remote Islands Marine National Monument



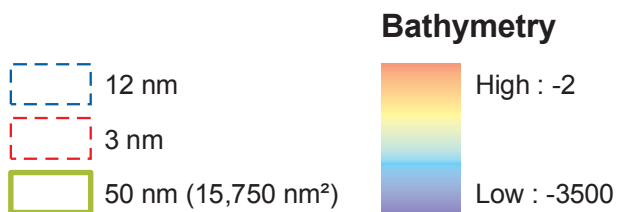
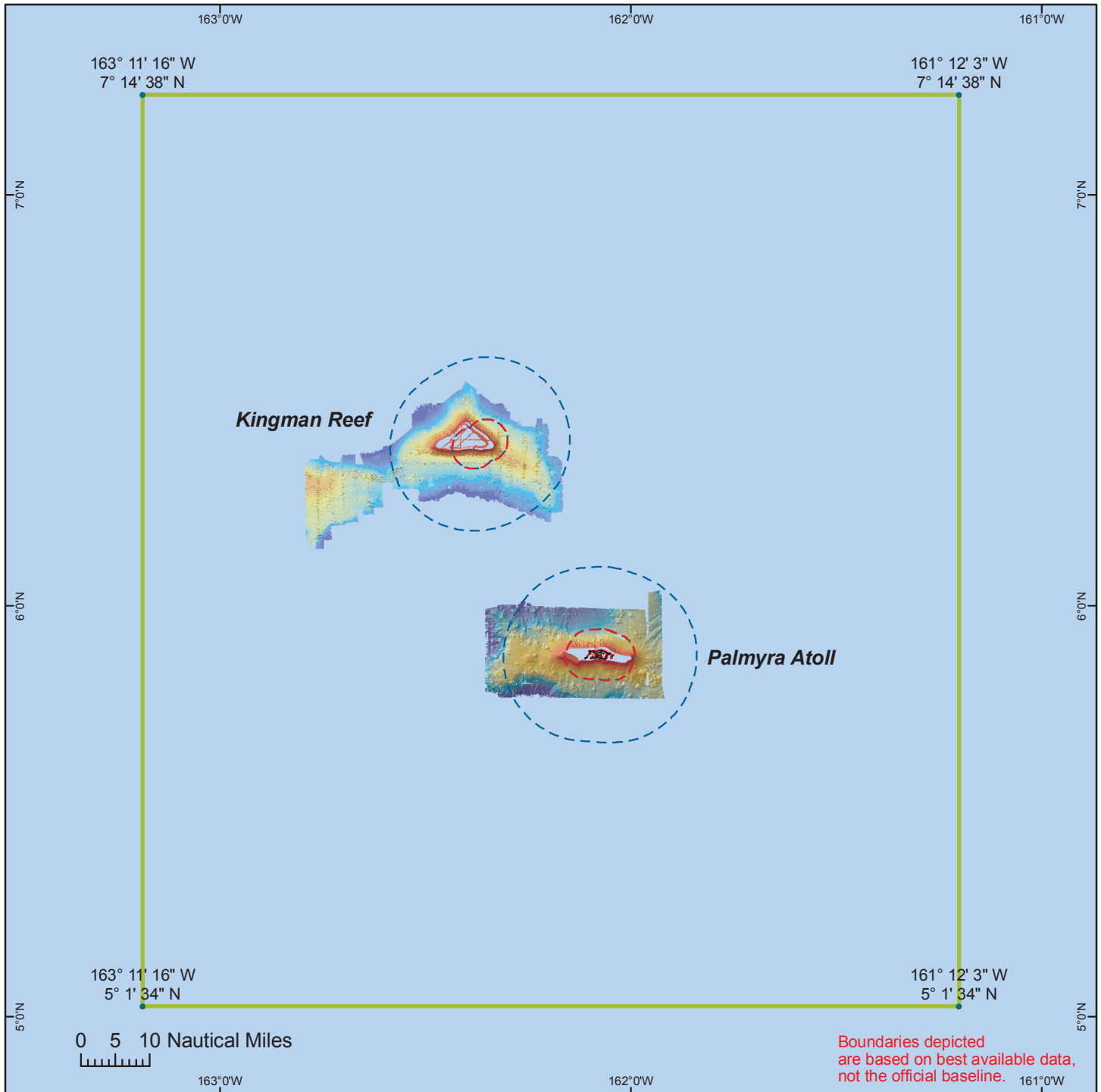
Buffer



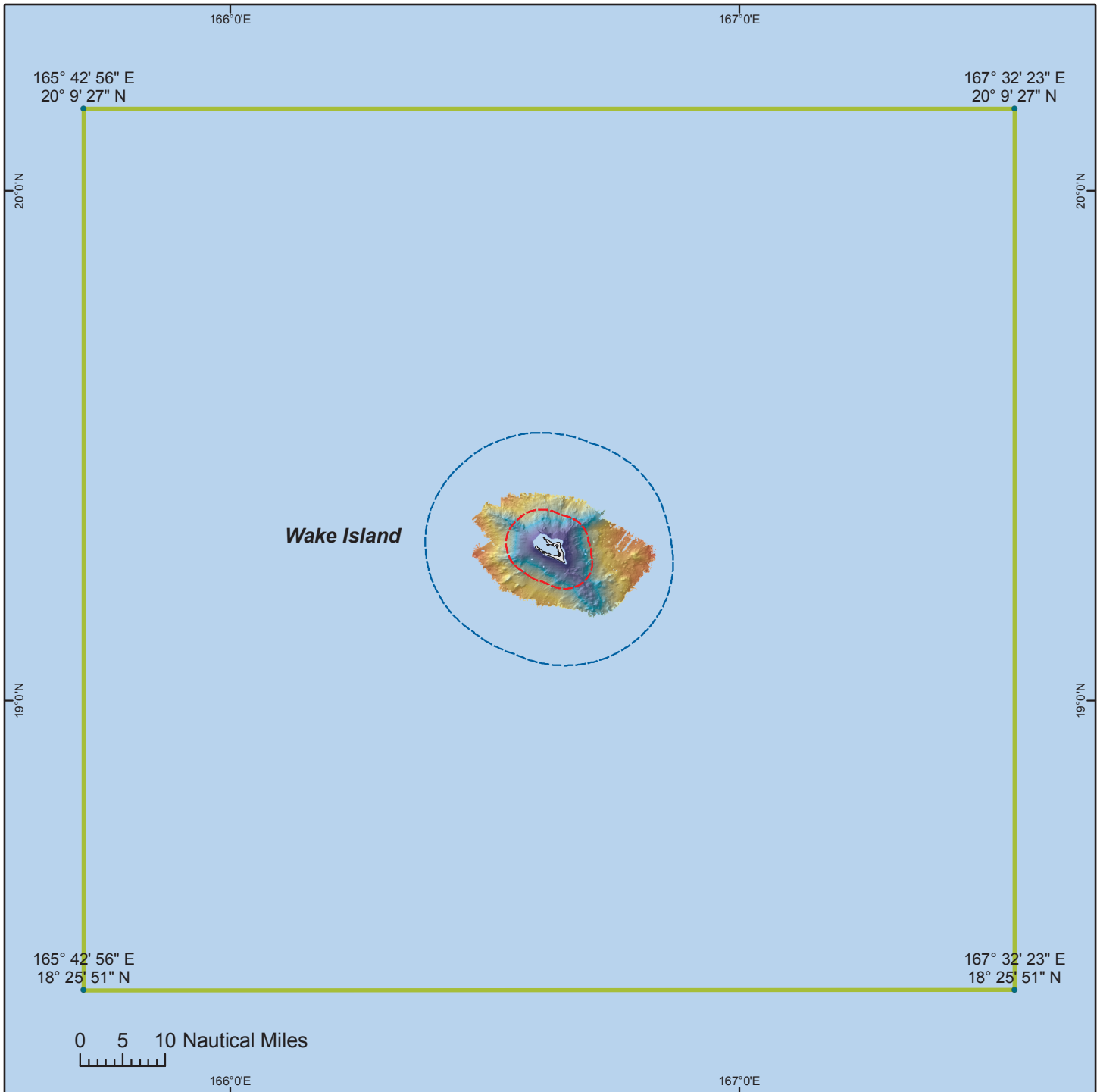
Bathymetry




Pacific Remote Islands Marine National Monument

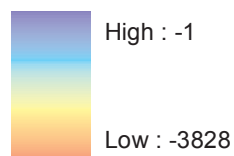


Pacific Remote Islands Marine National Monument

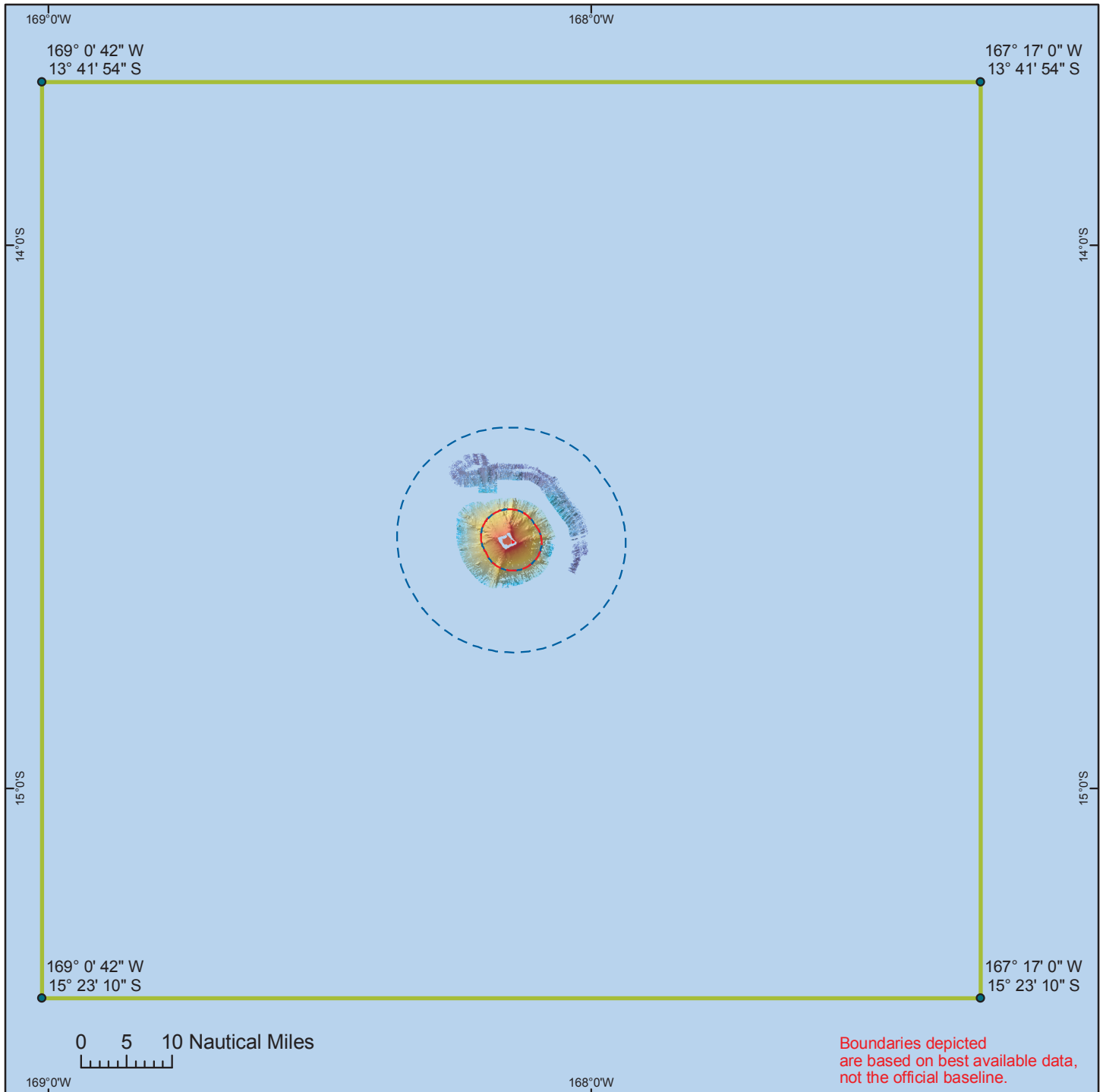





Bathymetry

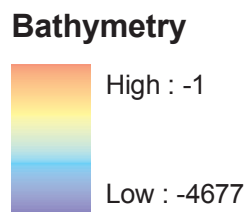
-  12 nm
-  3 nm
-  50 nm (10,718 nm²)



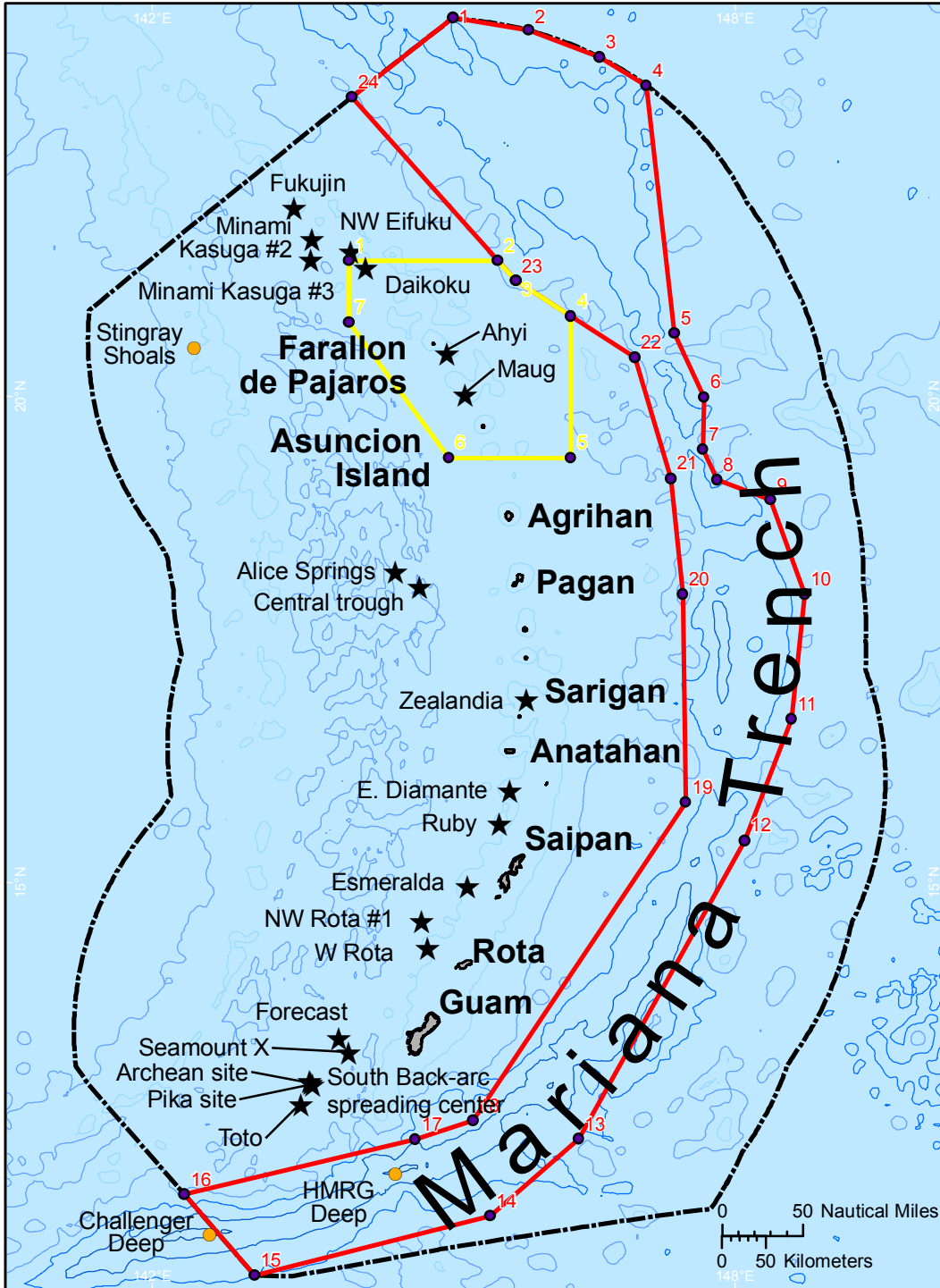
Rose Atoll Marine National Monument



-  12 nm
-  3 nm
-  50 nm (10,157 nm²)



Mariana Trench Marine National Monument



Trench Unit

Id	Longitude	Latitude
1	145° 5' 46" E	23° 53' 35" N
2	145° 52' 27.10" E	23° 45' 50.54" N
3	146° 36' 18.91" E	23° 29' 18.33" N
4	147° 5' 16.84" E	23° 11' 43.92" N
5	147° 22' 31.43" E	20° 38' 41.35" N
6	147° 40' 48.31" E	19° 59' 23.30" N
7	147° 39' 59.51" E	19° 27' 2.96" N
8	147° 48' 51.61" E	19° 8' 18.74" N
9	148° 21' 47.20" E	18° 56' 6.46" N
10	148° 42' 50.50" E	17° 58' 2.20" N
11	148° 34' 47.12" E	16° 40' 53.86" N
12	148° 5' 39.95" E	15° 25' 51.09" N
13	146° 23' 24.38" E	12° 21' 38.38" N
14	145° 28' 33.28" E	11° 34' 7.64" N
15	143° 3' 9" E	10° 57' 30" N
16	142° 19' 54.93" E	11° 47' 24.83" N
17	144° 42' 31.24" E	12° 21' 24.65" N
18	145° 17' 59.93" E	12° 33' 5.35" N
19	147° 29' 32.24" E	15° 49' 25.53" N
20	147° 27' 32.35" E	17° 57' 52.76" N
21	147° 20' 16.96" E	19° 9' 19.41" N
22	146° 57' 55.31" E	20° 23' 58.80" N
23	145° 44' 31.14" E	21° 11' 14.60" N
24	144° 5' 27.55" E	23° 2' 28.67" N

Islands Unit

Id	Longitude	Latitude
1	144° 1' 22.97" E	21° 23' 42.40" N
2	145° 33' 25.20" E	21° 23' 42.40" N
3	145° 44' 31.14" E	21° 11' 14.60" N
4	146° 18' 36.75" E	20° 49' 17.46" N
5	146° 18' 36.75" E	19° 22' 0.00" N
6	145° 3' 12.22" E	19° 22' 0.00" N
7	144° 1' 22.97" E	20° 45' 44.11" N

Vents Unit

Volcano	Longitude	Latitude
Fukujin	143° 27' 30" E	21° 56' 30" N
Minami Kasuga #2	143° 38' 30" E	21° 36' 36" N
NW Eifuku	144° 2' 36" E	21° 29' 15" N
Minami Kasuga #3	143° 38' 0" E	21° 24' 0" N
Daikoku	144° 11' 39" E	21° 19' 27" N
Ahyi	145° 1' 45" E	20° 26' 15" N
Maug	145° 13' 18" E	20° 1' 15" N
Alice Springs	144° 30' 0" E	18° 12' 0" N
Central trough	144° 45' 0" E	18° 1' 0" N
Zealandia	145° 51' 4" E	16° 52' 57" N
E. Diamante	145° 40' 47" E	15° 56' 31" N
Ruby	145° 34' 24" E	15° 36' 15" N
Esmeralda	145° 14' 45" E	14° 57' 30" N
NW Rota #1	144° 46' 30" E	14° 36' 0" N
W Rota	144° 50' 0" E	14° 19' 30" N
Forecast	143° 55' 12" E	13° 23' 30" N
Seamount X	144° 1' 0" E	13° 14' 48" N
South Backarc	143° 37' 8" E	12° 57' 12" N
Archean site	143° 37' 55" E	12° 56' 23" N
Pika site	143° 38' 55" E	12° 55' 7" N
Toto	143° 31' 42" E	12° 42' 48" N

Sources:

- NOAA Coral Reef Conservation Program
- NMFS Coral Reef Ecosystem Division
- NESDIS NGDC
- NOS/CCMA Biogeography Branch
- OAR Pacific Marine Environmental Lab

- 10000 m
- 8000 m
- 6000 m
- 4000 m
- 2000 m
- ★ Active Hydrothermal Submarine Volcanoes
- Trench Unit (59,732 nm²)
- Islands Unit (12,388 nm²)
- - - EEZ

