

ROMA/URBE (RM) 24 m. s.l.m. (a.s.l.)											
TEMPERATURE											
MM	Tm	Tx 1d	Tx 2d	Tx 3d	Txm	Tn 1d	Tn 2d	Tn 3d	Tnm	Tx P85-15	Tn P85-15
Gen(Jan)	7.4	12.1	12.6	13.2	12.6	1.9	2.1	2.3	2.1	5.9	8.3
Feb(Feb)	8.4	14.1	13.6	14.5	14.0	2.5	2.8	2.9	2.7	6.6	7.1
Mar(Mar)	10.4	15.4	16.6	17.4	16.5	3.5	4.2	5.1	4.3	6.6	7.0
Apr(Apr)	12.9	18.6	18.2	19.9	18.9	6.8	6.3	7.4	6.8	6.9	6.4
Mag(May)	17.3	22.3	24.0	25.3	23.9	9.5	11.0	11.7	10.8	7.4	5.6
Giu(Jun)	21.2	27.1	27.8	29.3	28.1	13.5	14.1	15.3	14.3	6.5	5.2
Lug(Jul)	24.2	30.8	31.4	32.2	31.5	16.4	17.0	17.3	16.9	5.6	4.5
Ago(Aug)	24.5	32.8	32.3	30.2	31.7	17.7	17.5	16.7	17.3	6.6	4.7
Set(Sep)	20.9	28.6	27.7	26.3	27.5	15.1	14.4	13.5	14.3	6.4	5.6
Ott(Oct)	16.4	24.2	23.0	20.5	22.4	12.1	10.9	8.7	10.5	7.3	8.1
Nov(Nov)	11.2	18.7	16.5	14.4	16.5	7.4	5.8	4.2	5.8	7.2	8.5
Dic(Dec)	8.2	13.5	13.5	12.6	13.2	3.3	3.2	2.8	3.1	6.4	8.9
MM	NgTn ≤ 0	NgTn ≤ -5	NgTx ≥ 25	NgTx ≥ 30	GrGi > 0	GrGi > 5	GrGi _18	Txx	An Tx	TNN	An Tn
Gen(Jan)	9.2	0.7	0.0	0.0	232	77	331	20.2	1994	-9.8	1985
Feb(Feb)	6.5	0.0	0.0	0.0	239	97	274	23.6	1990	-6.0	1975
Mar(Mar)	2.9	0.1	0.3	0.0	330	171	242	27.0	1981	-9.0	1985
Apr(Apr)	0.3	0.0	0.8	0.0	385	235	154	28.3	1977	-2.5	1995
Mag(May)	0.0	0.0	12.0	1.1	523	372	42	33.1	1977	3.7	1995
Giu(Jun)	0.0	0.0	25.6	8.5	633	483	3	36.8	1982	6.2	1975
Lug(Jul)	0.0	0.0	30.6	22.9	747	593	0	40.0	1983	9.8	1991
Ago(Aug)	0.0	0.0	31.1	22.6	774	616	0	39.6	2000	8.6	1978
Set(Sep)	0.0	0.0	24.1	6.9	635	483	5	37.6	1982	5.4	1971
Ott(Oct)	0.0	0.0	7.1	0.0	502	349	66	31.4	1995	0.0	1971
Nov(Nov)	2.0	0.1	0.1	0.0	330	182	203	26.0	1992	-7.2	1973
Dic(Dec)	7.3	0.2	0.0	0.0	246	95	296	22.8	1989	-5.4	1980
PRECIPITAZIONI E FENOMENI (PRECIPITATION AND PHENOMENA)											
MM	RTot	RQ0	RQ1	RQ2	RQ3	RQ4	RQ5	Rx12a	Rx12b	Rx24	An Rx24
Gen(Jan)	69.5	5.1	19.4	53.7	72.1	111.3	162.0	40.0	51.6	60.4	1985
Feb(Feb)	75.8	9.8	24.4	40.0	77.0	112.3	202.7	48.8	32.4	52.4	1984
Mar(Mar)	59.0	0.0	32.1	40.6	68.4	79.7	124.5	50.2	27.4	50.2	1981
Apr(Apr)	76.2	12.7	28.9	57.0	83.5	105.6	203.6	29.2	38.8	46.6	1988
Mag(May)	49.1	0.6	21.9	33.9	39.2	65.3	152.6	30.8	43.0	51.6	1984
Giu(Jun)	40.7	0.4	15.0	27.4	37.0	58.5	160.4	39.6	59.6	59.6	1981
Lug(Jul)	21.0	0.0	0.5	4.7	11.3	35.0	116.9	30.0	46.6	46.6	1989
Ago(Aug)	34.1	0.0	1.6	15.5	23.2	53.2	165.2	43.6	85.2	89.0	1977
Set(Sep)	71.8	0.2	29.4	54.2	79.4	100.9	167.6	70.2	62.0	84.2	1989
Ott(Oct)	107.0	11.0	45.8	75.7	100.0	153.5	257.3	63.6	65.4	83.4	1978
Nov(Nov)	109.9	12.4	44.7	77.6	113.0	186.0	249.7	54.2	53.2	75.6	1975
Dic(Dec)	84.4	2.2	50.2	66.9	84.0	123.1	163.5	46.0	70.6	73.4	1972
MM	NgR > 1	NgR > 5	NgR > 10	NgR > 50	Ng Fog	Ux%	Un%	Ng h6 Nuv≤4	Ng h6 Nuv>4	Ngh18 Nuv≤4	Ngh18 Nuv>4
Gen(Jan)	7.6	4.2	2.6	0.1	5.2	96	58	15.6	12.8	16.0	12.1
Feb(Feb)	7.4	4.6	2.6	0.0	4.1	95	49	11.9	12.8	13.4	11.3
Mar(Mar)	7.8	3.8	2.2	0.0	3.4	96	47	13.2	14.7	17.6	13.8
Apr(Apr)	8.8	4.7	2.6	0.0	2.7	97	47	15.4	18.2	15.0	18.5
Mag(May)	5.6	3.4	1.6	0.0	2.1	97	46	19.3	15.4	19.7	14.8
Giu(Jun)	4.1	2.2	1.2	0.0	0.5	97	41	22.4	10.2	21.8	10.8
Lug(Jul)	2.3	1.1	0.7	0.0	0.1	96	38	28.1	5.7	27.4	6.3
Ago(Aug)	3.2	1.7	1.3	0.0	0.4	97	40	27.1	6.9	26.2	7.7
Set(Sep)	5.6	3.6	2.2	0.2	1.1	97	45	21.7	10.2	22.3	9.0
Ott(Oct)	7.7	5.3	3.3	0.2	3.7	97	54	14.3	14.0	18.7	8.2
Nov(Nov)	9.1	5.6	3.6	0.1	5.2	97	60	13.4	13.5	16.4	10.0
Dic(Dec)	8.5	4.8	2.8	0.1	5.4	96	61	15.8	12.3	17.4	10.6

ROMA/URBE (RM) 24 m. s.l.m. (a.s.l.)**DISTRIBUZIONE DEI VENTI (WIND DISTRIBUTION) - HH 00**

MM	Calme	N 1-10	N 11-20	N >20	NE 1-10	NE 11-20	NE >20	E 1-10	E 11-20	E >20	SE 1-10	SE 11-20	SE >20
Gen(Jan)	69.65	8.56	4.28	0.00	1.95	0.00	0.00	2.72	0.39	0.00	6.61	3.50	0.00
Feb(Feb)	63.75	7.92	4.17	0.83	3.75	1.25	0.00	2.50	0.83	0.00	5.42	3.75	0.00
Mar(Mar)	70.00	5.56	2.22	0.37	2.96	1.48	0.00	1.85	0.00	0.00	2.59	2.96	0.37
Apr(Apr)	67.03	6.96	2.56	0.37	1.83	1.10	0.00	1.47	0.00	0.00	3.30	2.20	0.00
Mag(May)	70.90	6.97	0.41	0.00	2.05	0.00	0.00	0.41	0.00	0.00	2.46	0.82	0.00
Giu(Jun)	81.11	5.07	0.46	0.00	0.92	0.00	0.00	1.38	0.00	0.00	1.38	0.00	0.00
Lug(Jul)	76.13	4.12	0.41	0.00	0.82	0.41	0.00	1.65	0.00	0.00	2.47	0.00	0.00
Ago(Aug)	84.23	4.15	0.41	0.00	0.83	0.00	0.00	0.41	0.00	0.00	1.66	0.00	0.00
Set(Sep)	75.85	7.20	1.27	0.00	1.27	0.42	0.00	0.00	0.42	0.00	2.54	0.85	0.00
Ott(Oct)	71.18	7.42	3.06	0.00	2.18	0.44	0.00	1.75	0.44	0.00	2.62	3.06	0.00
Nov(Nov)	60.00	7.91	2.79	0.47	1.40	0.00	0.00	2.33	0.47	0.00	6.51	4.65	0.00
Dic(Dec)	62.98	11.45	4.20	0.38	1.91	0.00	0.00	1.15	2.29	0.00	4.96	3.82	0.00

MM	S 1-10	S 11-20	S >20	SW 1-10	SW 11-20	SW >20	W 1-10	W 11-20	W >20	NW 1-10	NW 11-20	NW >20	V _{xx}
Gen(Jan)	0.39	0.78	0.00	0.00	0.00	0.00	0.39	0.39	0.00	0.00	0.00	0.00	80
Feb(Feb)	1.25	1.67	0.00	1.67	0.00	0.00	0.42	0.42	0.00	0.42	0.00	0.00	57
Mar(Mar)	2.22	1.48	0.00	1.11	0.00	0.00	0.00	0.00	0.00	4.44	0.00	0.00	80
Apr(Apr)	3.30	2.56	0.00	1.10	1.83	0.00	0.73	0.73	0.00	2.56	0.00	0.00	70
Mag(May)	3.28	1.64	0.41	1.64	0.00	0.00	1.64	0.00	0.00	6.56	0.00	0.00	40
Giu(Jun)	3.23	0.46	0.00	0.92	0.00	0.00	1.38	0.00	0.00	2.76	0.00	0.00	39
Lug(Jul)	4.12	1.23	0.00	1.23	0.00	0.00	1.65	0.00	0.00	5.35	0.00	0.00	52
Ago(Aug)	2.07	0.41	0.00	1.24	0.00	0.00	0.00	0.00	0.00	2.90	0.41	0.00	72
Set(Sep)	3.81	1.27	0.00	0.42	0.00	0.42	1.69	0.42	0.00	1.27	0.00	0.42	80
Ott(Oct)	2.62	0.87	0.00	0.44	0.44	0.00	0.87	0.00	0.00	1.75	0.00	0.00	79
Nov(Nov)	5.12	2.79	0.00	0.47	0.93	0.47	0.47	0.47	0.00	1.86	0.93	0.00	80
Dic(Dec)	1.91	1.91	0.00	0.38	0.00	0.00	0.38	0.00	0.00	1.91	0.00	0.00	55

DISTRIBUZIONE DEI VENTI (WIND DISTRIBUTION) - HH 06

MM	Calme	N 1-10	N 11-20	N >20	NE 1-10	NE 11-20	NE >20	E 1-10	E 11-20	E >20	SE 1-10	SE 11-20	SE >20
Gen(Jan)	68.09	7.98	3.70	0.00	2.42	0.43	0.00	2.56	1.14	0.00	4.84	1.99	0.00
Feb(Feb)	67.59	8.67	4.26	0.00	2.95	0.00	0.16	1.64	1.31	0.00	4.09	3.44	0.00
Mar(Mar)	70.58	6.81	4.49	0.14	1.59	0.29	0.00	1.74	1.01	0.14	3.48	2.46	0.00
Apr(Apr)	66.27	9.04	2.89	0.12	1.69	0.60	0.00	1.45	1.45	0.12	3.37	1.69	0.00
Mag(May)	73.46	10.24	0.58	0.00	1.05	0.12	0.00	1.63	0.35	0.00	2.21	0.12	0.00
Giu(Jun)	75.09	9.59	0.50	0.00	1.62	0.00	0.00	0.87	0.12	0.00	2.62	0.37	0.00
Lug(Jul)	77.03	10.41	0.12	0.00	0.84	0.36	0.00	0.84	0.12	0.12	0.96	0.00	0.12
Ago(Aug)	80.67	9.31	0.36	0.00	0.24	0.00	0.00	1.19	0.24	0.00	0.72	0.24	0.00
Set(Sep)	79.95	7.74	0.63	0.00	0.63	0.13	0.00	2.03	0.63	0.00	1.40	0.63	0.00
Ott(Oct)	75.64	6.30	1.86	0.14	3.01	0.57	0.00	2.15	1.15	0.00	2.58	2.15	0.00
Nov(Nov)	69.94	7.85	3.17	0.30	1.51	0.30	0.00	2.27	1.36	0.15	3.32	1.21	0.00
Dic(Dec)	67.91	9.41	5.12	0.28	1.38	0.28	0.00	1.66	1.66	0.00	2.49	2.07	0.00

MM	S 1-10	S 11-20	S >20	SW 1-10	SW 11-20	SW >20	W 1-10	W 11-20	W >20	NW 1-10	NW 11-20	NW >20	V _{xx}
Gen(Jan)	1.14	1.00	0.00	1.00	0.71	0.00	0.00	0.14	0.14	1.42	1.00	0.00	
Feb(Feb)	1.47	2.45	0.00	0.33	0.49	0.00	0.16	0.33	0.00	0.33	0.00	0.00	
Mar(Mar)	2.46	1.45	0.00	0.29	0.14	0.00	0.14	0.29	0.00	1.45	0.72	0.00	
Apr(Apr)	2.29	2.17	0.00	2.05	0.84	0.00	0.72	0.00	0.00	2.77	0.12	0.00	
Mag(May)	2.44	1.16	0.00	0.23	0.47	0.12	1.05	0.00	0.00	3.84	0.00	0.12	
Giu(Jun)	2.12	0.75	0.00	1.00	0.25	0.00	0.62	0.00	0.00	3.99	0.00	0.00	
Lug(Jul)	1.44	0.84	0.00	0.96	0.12	0.00	0.24	0.00	0.00	4.55	0.12	0.00	
Ago(Aug)	1.55	0.24	0.00	0.24	0.24	0.00	0.48	0.00	0.00	3.82	0.12	0.00	
Set(Sep)	2.16	0.25	0.00	0.63	0.00	0.00	0.63	0.00	0.00	2.28	0.00	0.00	
Ott(Oct)	1.15	0.29	0.00	0.72	0.43	0.14	0.14	0.00	0.00	1.15	0.00	0.00	
Nov(Nov)	1.66	2.11	0.15	0.91	0.60	0.00	0.45	0.30	0.00	1.81	0.30	0.00	
Dic(Dec)	1.66	1.24	0.00	0.97	1.11	0.00	0.69	0.28	0.00	0.97	0.28	0.00	

ROMA/URBE (RM) 24 m. s.l.m. (a.s.l.)**DISTRIBUZIONE DEI VENTI (WIND DISTRIBUTION) - HH 12**

MM	Calme	N 1-10	N 11-20	N >20	NE 1-10	NE 11-20	NE >20	E 1-10	E 11-20	E >20	SE 1-10	SE 11-20	SE >20
Gen(Jan)	41.37	14.66	9.69	0.71	7.45	0.59	0.00	2.72	1.54	0.12	4.14	2.36	0.00
Feb(Feb)	35.34	13.22	9.69	1.44	5.10	1.05	0.13	2.88	0.65	0.00	4.06	3.93	0.00
Mar(Mar)	25.65	6.71	6.59	1.29	3.06	1.65	0.00	2.71	0.59	0.00	2.59	3.53	0.59
Apr(Apr)	14.96	5.46	3.92	0.83	2.26	1.66	0.00	0.83	0.59	0.00	2.49	2.97	0.36
Mag(May)	10.65	5.67	3.24	0.12	2.55	0.58	0.00	1.62	0.35	0.00	1.16	1.04	0.12
Giu(Jun)	11.63	4.53	2.82	0.37	1.35	0.12	0.00	0.98	0.12	0.00	1.10	0.61	0.00
Lug(Jul)	11.58	6.15	2.77	0.00	1.09	0.60	0.00	1.09	0.12	0.00	1.21	0.60	0.00
Ago(Aug)	14.37	4.00	2.59	0.00	2.12	0.35	0.00	0.82	0.00	0.00	1.30	0.12	0.00
Set(Sep)	25.97	6.28	2.42	0.00	2.29	0.36	0.00	1.93	0.48	0.00	1.81	1.81	0.00
Ott(Oct)	33.89	10.58	4.04	0.12	4.99	0.71	0.12	3.57	1.31	0.00	3.09	3.09	0.12
Nov(Nov)	38.99	15.38	6.77	0.25	5.29	0.74	0.00	2.58	1.60	0.00	3.08	2.71	0.25
Dic(Dec)	37.74	18.47	7.87	1.48	6.50	1.14	0.23	3.76	1.14	0.00	2.96	2.17	0.23
MM	S 1-10	S 11-20	S >20	SW 1-10	SW 11-20	SW >20	W 1-10	W 11-20	W >20	NW 1-10	NW 11-20	NW >20	Vxx
Gen(Jan)	3.31	3.78	0.00	0.71	1.30	0.00	0.35	0.47	0.24	2.84	1.06	0.35	
Feb(Feb)	4.45	5.76	0.13	2.88	1.83	0.13	1.18	1.31	0.26	3.14	1.05	0.00	
Mar(Mar)	7.53	7.65	0.82	7.29	6.12	0.35	5.06	1.29	0.12	5.29	2.12	0.24	
Apr(Apr)	5.46	12.11	0.36	10.81	11.64	0.83	9.14	4.04	0.12	4.87	2.49	0.12	
Mag(May)	6.83	9.49	0.35	10.88	18.06	0.58	11.69	4.28	0.00	7.64	1.50	0.00	
Giu(Jun)	6.61	8.69	0.49	18.36	19.95	0.24	7.96	5.14	0.00	5.39	1.84	0.00	
Lug(Jul)	6.39	7.60	0.24	17.49	21.11	0.00	7.36	5.43	0.00	4.58	1.21	0.00	
Ago(Aug)	10.84	8.01	0.00	20.02	15.78	0.00	7.89	3.06	0.00	5.42	0.71	0.12	
Set(Sep)	9.06	9.30	0.24	14.25	7.13	0.00	7.97	1.69	0.00	4.83	0.72	0.00	
Ott(Oct)	5.95	7.13	0.36	5.83	4.16	0.36	3.92	1.43	0.12	4.04	0.48	0.00	
Nov(Nov)	5.54	4.92	0.74	1.85	2.58	0.62	0.62	0.49	0.00	2.83	1.60	0.00	
Dic(Dec)	2.74	4.56	0.34	0.80	3.31	0.11	0.57	0.57	0.11	2.17	0.46	0.00	

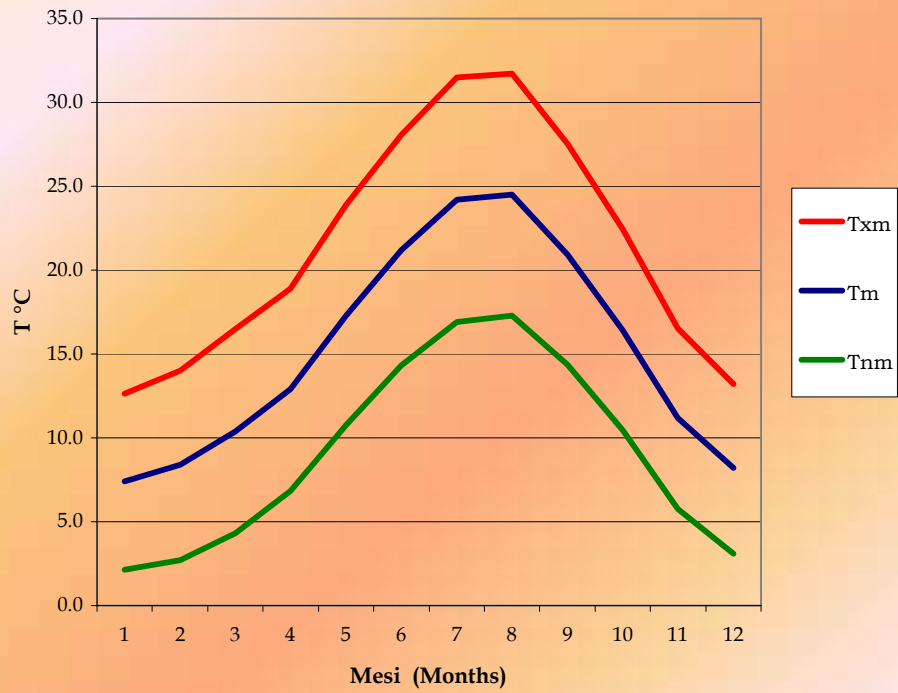
DISTRIBUZIONE DEI VENTI (WIND DISTRIBUTION) - HH 18

MM	Calme	N 1-10	N 11-20	N >20	NE 1-10	NE 11-20	NE >20	E 1-10	E 11-20	E >20	SE 1-10	SE 11-20	SE >20
Gen(Jan)	61.25	5.13	6.98	0.57	1.71	0.71	0.00	2.28	1.00	0.00	5.70	3.99	0.14
Feb(Feb)	49.51	5.83	8.25	0.16	2.59	1.29	0.00	2.10	1.46	0.00	3.24	1.78	0.00
Mar(Mar)	28.70	4.97	6.38	0.13	1.02	1.02	0.00	0.77	0.64	0.00	2.04	2.42	0.38
Apr(Apr)	18.14	4.18	4.65	0.48	2.15	1.31	0.00	1.43	0.36	0.00	3.82	2.63	0.00
Mag(May)	17.94	3.94	2.31	0.12	1.39	0.35	0.00	2.43	0.35	0.12	1.27	0.69	0.00
Giu(Jun)	11.07	2.71	3.32	0.12	0.86	0.25	0.00	1.48	0.37	0.00	0.98	0.25	0.00
Lug(Jul)	9.52	2.26	3.81	0.24	0.83	0.60	0.00	0.71	0.36	0.00	1.19	0.48	0.00
Ago(Aug)	12.99	3.19	1.89	0.12	1.30	0.24	0.00	1.06	0.00	0.00	0.94	0.59	0.00
Set(Sep)	37.72	2.69	2.43	0.00	1.41	0.51	0.00	0.51	0.38	0.00	2.30	0.38	0.00
Ott(Oct)	61.16	5.36	3.13	0.00	1.34	0.30	0.00	2.23	0.30	0.00	4.76	1.34	0.00
Nov(Nov)	63.83	6.53	4.86	0.15	1.37	0.76	0.00	1.98	1.37	0.00	4.71	2.43	0.15
Dic(Dec)	60.72	6.36	6.36	0.69	1.80	0.55	0.00	2.63	0.55	0.00	6.36	2.49	0.14
MM	S 1-10	S 11-20	S >20	SW 1-10	SW 11-20	SW >20	W 1-10	W 11-20	W >20	NW 1-10	NW 11-20	NW >20	Vxx
Gen(Jan)	2.99	1.99	0.14	1.00	0.43	0.00	1.28	0.43	0.00	1.42	0.71	0.00	
Feb(Feb)	7.77	2.59	0.16	5.66	1.29	0.16	2.27	0.97	0.16	1.62	0.49	0.00	
Mar(Mar)	8.42	7.14	0.00	16.45	2.68	0.00	11.35	1.79	0.00	2.68	0.89	0.13	
Apr(Apr)	8.71	6.68	0.12	20.29	6.09	0.36	12.65	2.86	0.00	2.27	0.48	0.00	
Mag(May)	8.10	5.79	0.00	23.03	7.64	0.12	17.82	3.01	0.00	2.89	0.35	0.12	
Giu(Jun)	3.44	4.80	0.00	31.73	11.32	0.00	19.07	4.80	0.12	2.09	0.62	0.00	
Lug(Jul)	5.24	3.21	0.00	35.36	10.12	0.00	16.07	6.55	0.00	1.79	1.19	0.12	
Ago(Aug)	5.43	3.54	0.00	38.61	7.44	0.00	16.17	3.66	0.00	1.42	1.18	0.00	
Set(Sep)	8.95	2.94	0.00	23.02	2.05	0.00	10.23	1.15	0.00	2.17	0.64	0.13	
Ott(Oct)	8.18	2.68	0.00	4.02	0.74	0.15	1.93	0.15	0.00	1.34	0.74	0.00	
Nov(Nov)	4.71	2.89	0.15	0.91	0.91	0.15	0.30	0.15	0.00	1.06	0.30	0.30	
Dic(Dec)	2.90	1.94	0.00	1.11	0.69	0.14	1.38	0.14	0.00	2.07	0.41	0.14	

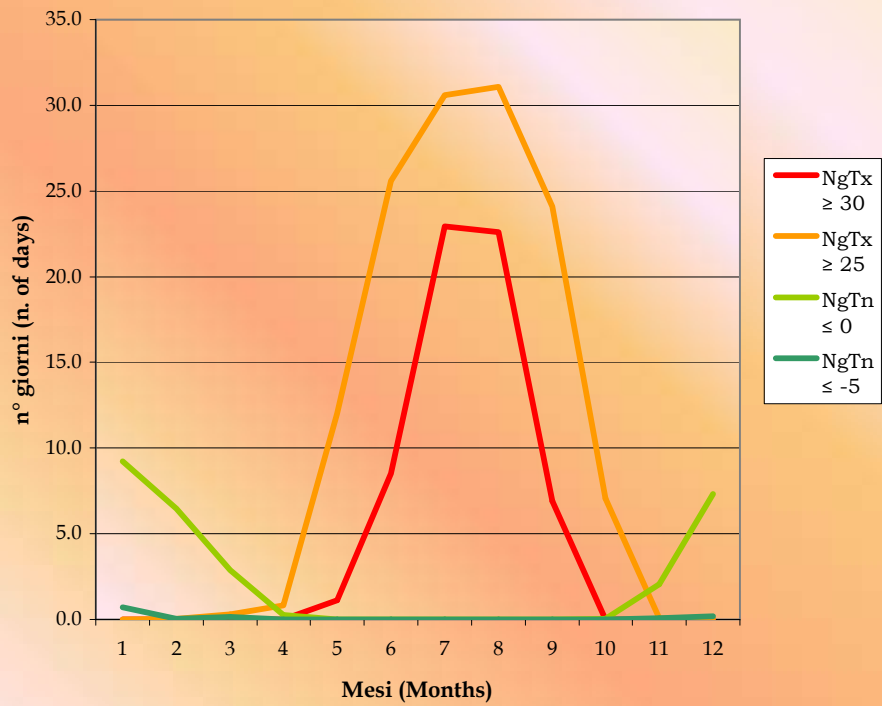


ROMA/URBE (RM) 24 m. s.l.m. (a.s.l.)

**Temperature media, massima e minima
(Mean, max. and min. average Temp)**

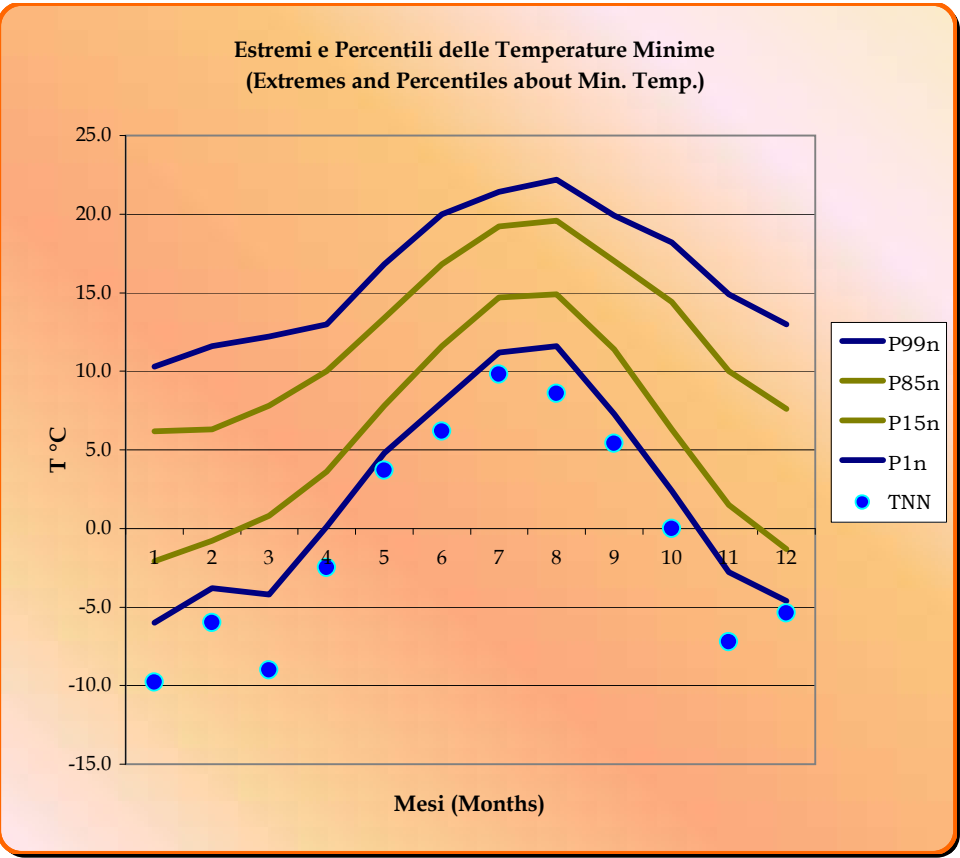
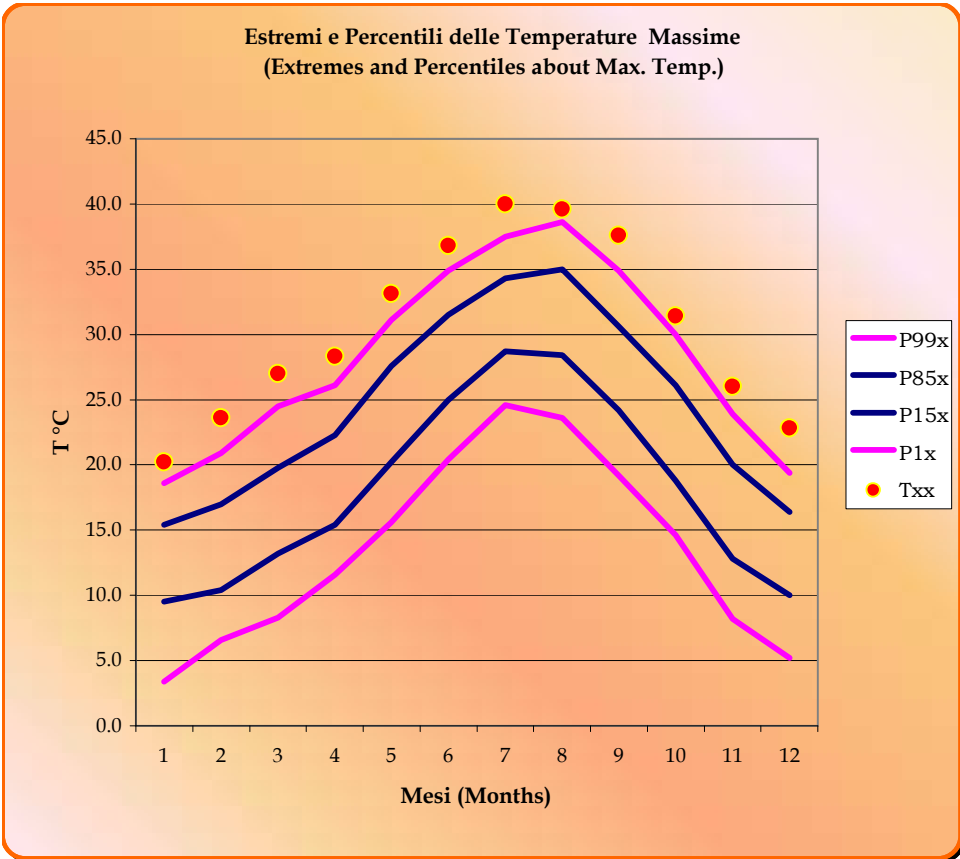


**Numero giorni con temperature ≤ -5 , ≤ 0 , ≥ 25 , $\geq 30^\circ\text{C}$
(Number of days with temp. ≤ -5 , ≤ 0 , ≥ 25 , $\geq 30^\circ\text{C}$)**





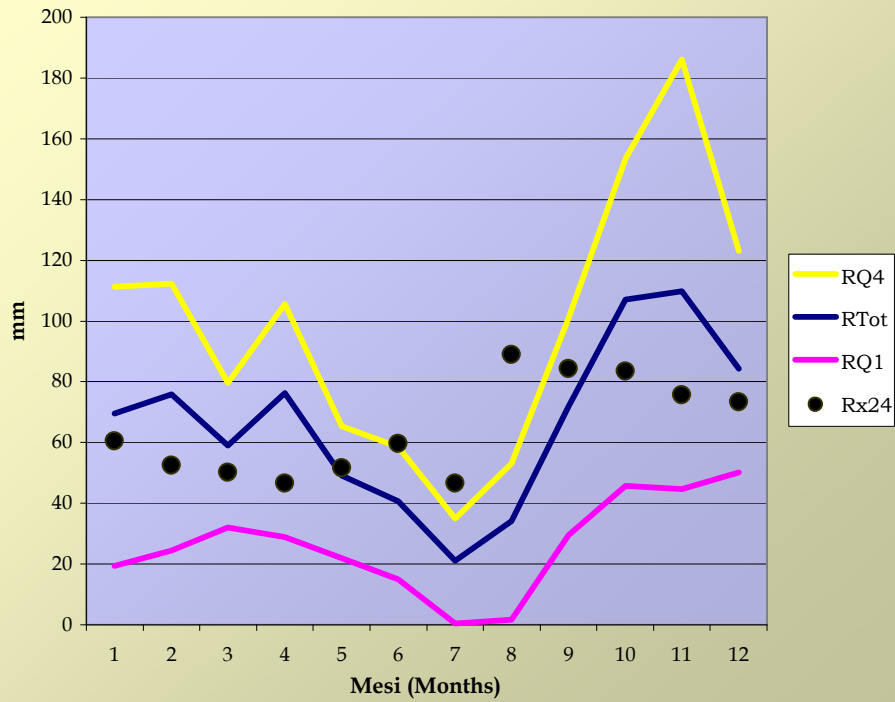
ROMA/URBE (RM) 24 m. s.l.m. (a.s.l.)



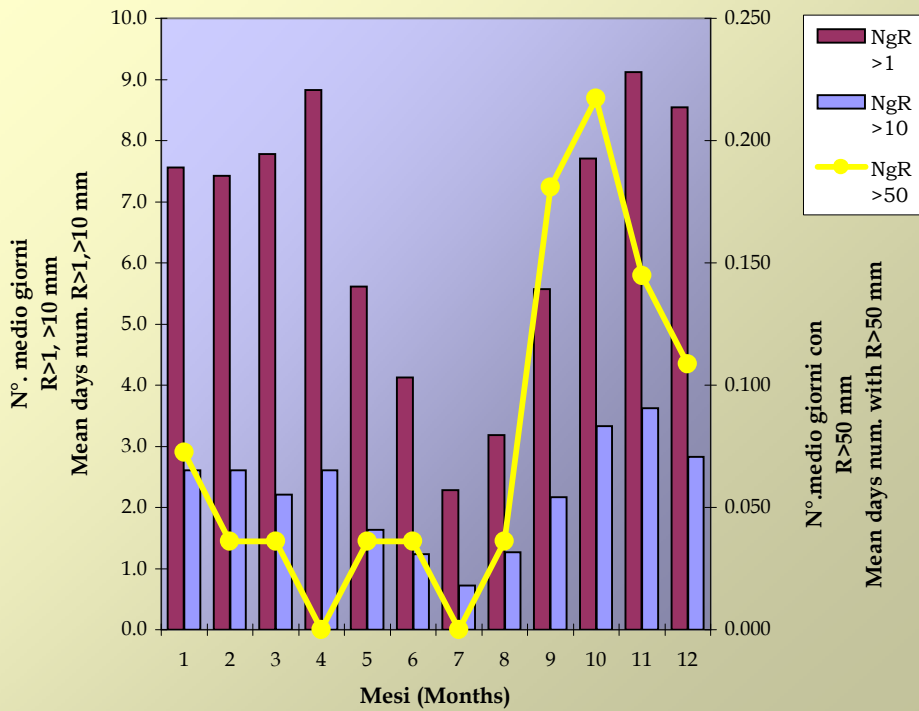


ROMA/URBE (RM) 24 m. s.l.m. (a.s.l.)

**Precipitazioni medie e massime
(Mean and Max. precipitation)**



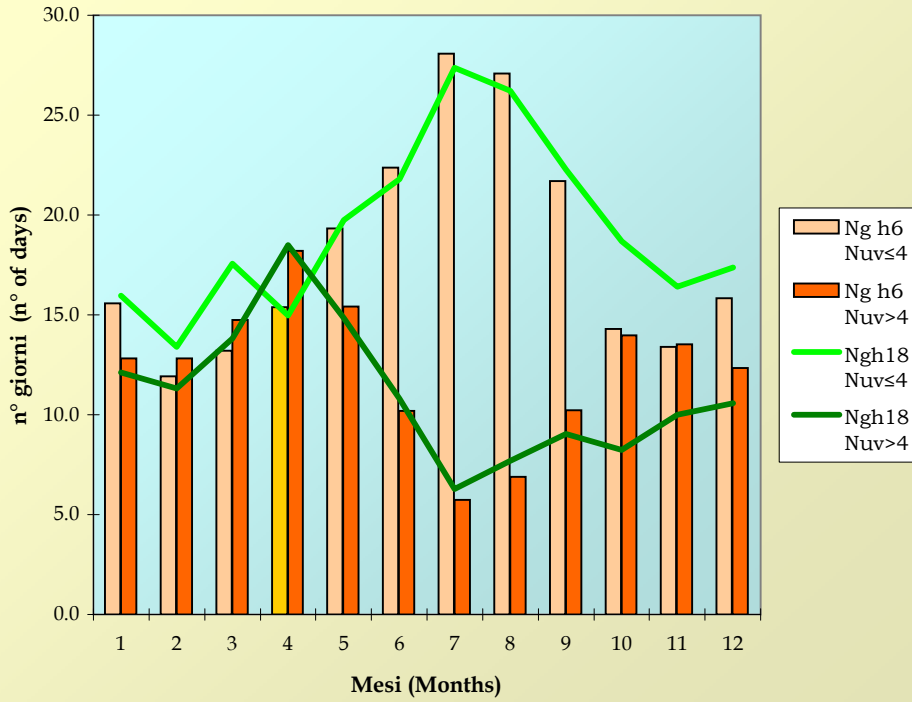
**Num. medio di giorni al mese con R > 1, > 10 e > 50 mm
Monthly mean days number with R > 1, > 10 and > 50 mm**



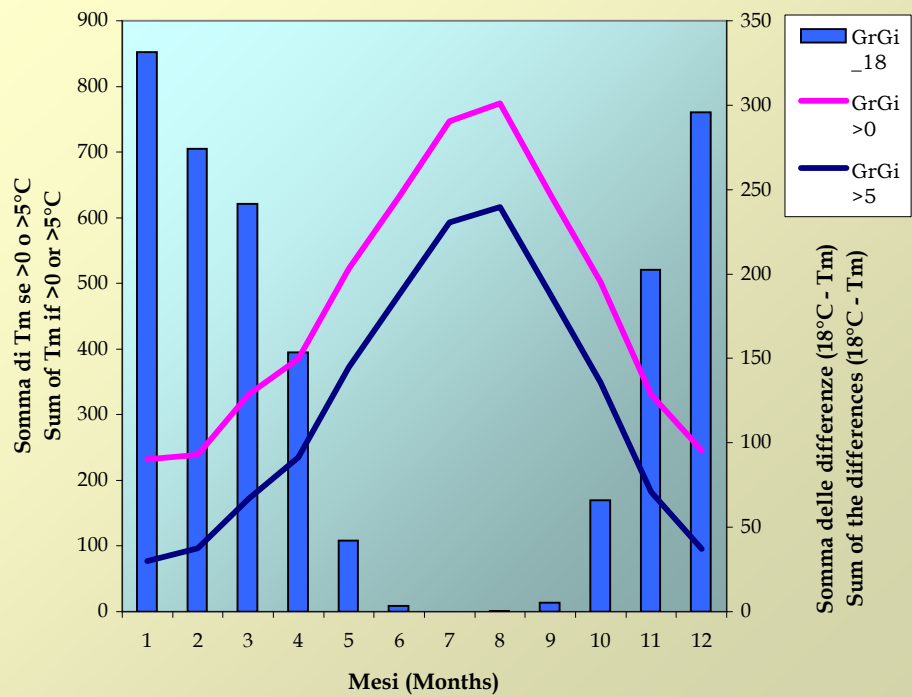


ROMA/URBE (RM) 24 m. s.l.m. (a.s.l.)

**Nuvolosità alle h 06 e alle h 18
(Cloudiness at h 06 and h 18)**



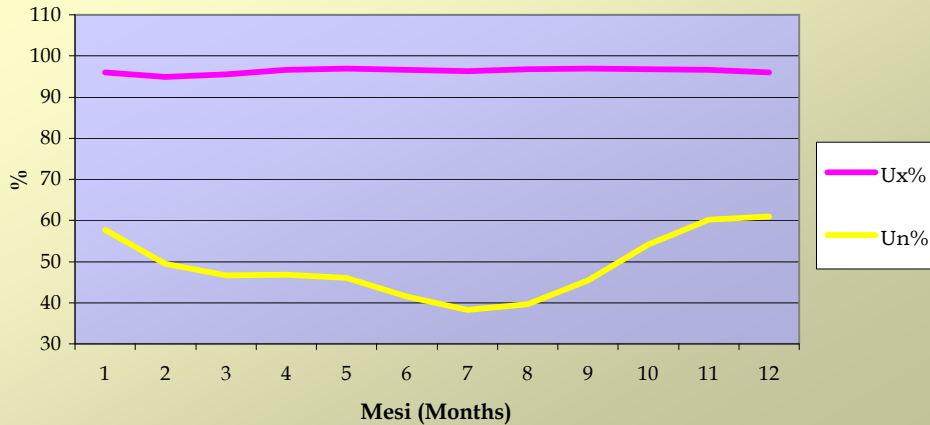
**Gradi Giorno per la crescita (linee) e per il riscald. ambientale (istogr.)
(Growing degree Days (lines) and warming degree Days (hist.))**





ROMA/URBE (RM) 24 m. s.l.m. (a.s.l.)

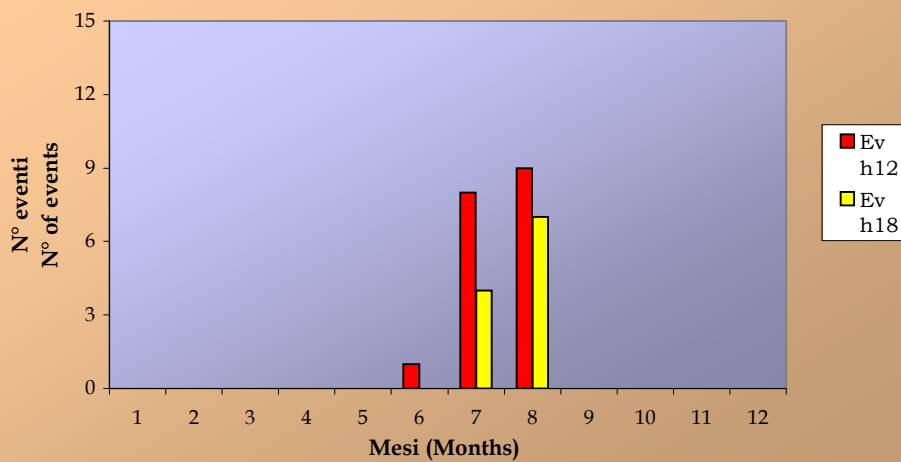
**Umidità relativa massima e minima
(Max. and min. relative Humidity)**



Temperature di effetto (Discomfort temperature)

MM	Teff12	Ev h12	Tm 12	U% 12	Teff18	Ev h18	Tm 18	U% 18
Gen(Jan)								
Feb(Feb)								
Mar(Mar)								
Apr(Apr)								
Mag(May)								
Giu(Jun)	34.3	1	29.0	78				
Lug(Jul)	38.5	8	32.0	66	34.7	4	29.0	80
Ago(Aug)	40.3	9	33.4	60	36.8	7	30.1	77
Set(Sep)								
Ott(Oct)								
Nov(Nov)								
Dic(Dec)								

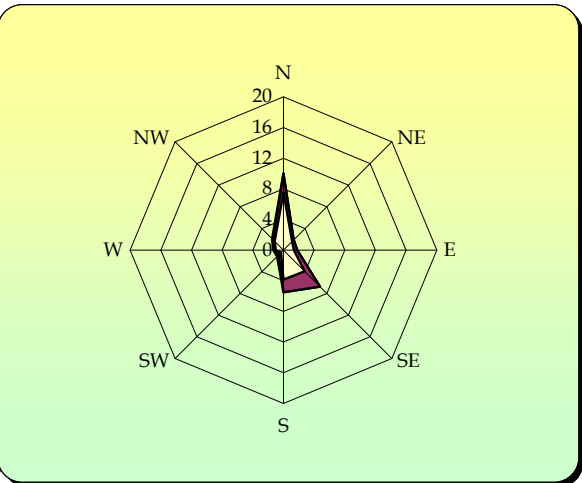
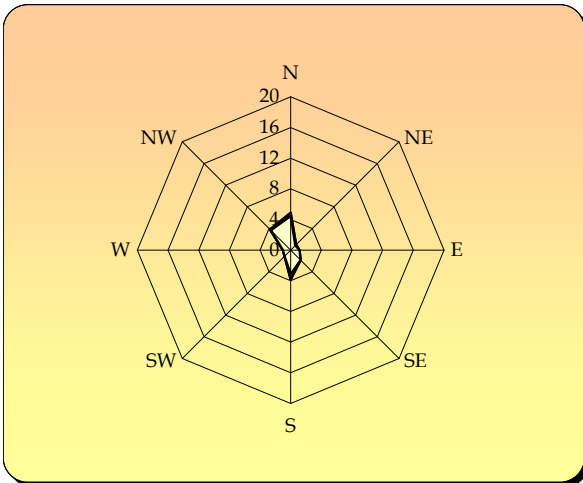
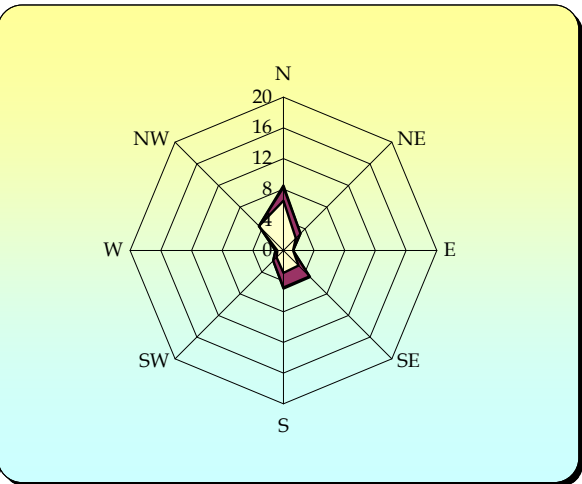
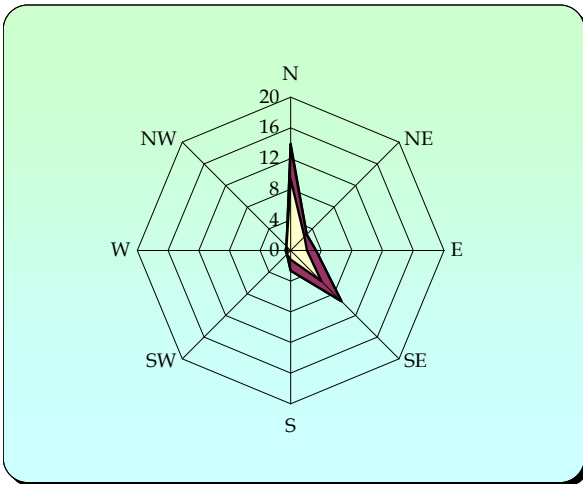
**N° eventi con (Teff - T) > 5°C quando T > 25°C
(N° of events with (Teff - T) > 5°C if T > 25°C)**





ROMA/URBE (RM) 24 m. s.l.m. (a.s.l.)

**GRAFICI ANEMOMETRICI
(ANEMOMETRIC DIAGRAMS)**



I diagrammi del vento sono ordinati per stagione come la tabella seguente.
(The anemometric diagrams are ordered by season as follows)

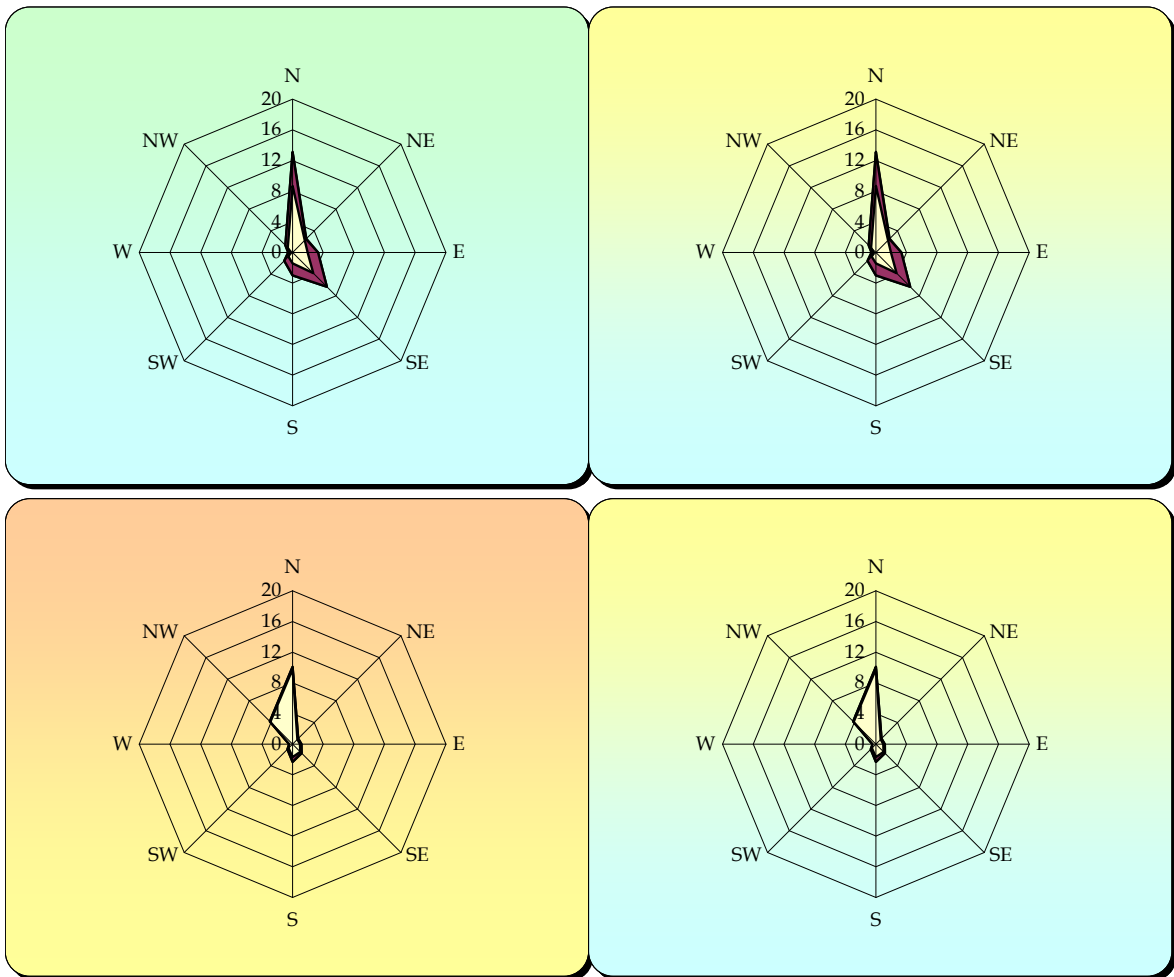
INVERNO (Dic. - Gen. - Feb.) WINTER (Dec. - Jan. - Feb.) % calme di vento = 65 % Wind Calm = 65	PRIMAVERA (Mar. - Apr. - Mag.) SPRING (Mar. - Apr. - May.) % calme di vento = 69 % Wind Calm = 69
ESTATE (Giu. - Lug. - Ago.) SUMMER (Jun. - Jul. - Aug.) % calme di vento = 80 % Wind Calm = 80	AUTUNNO (Set. - Ott. - Nov.) AUTUMN (Sep. - Oct. - Nov.) % calme di vento = 69 % Wind Calm = 69

Periodo di riferimento dei dati (Period of reference considered to get data) = **1971 ÷ 2000**
Frequenze percentuali alle ore (Percentage frequency of occurrence at) = **00 UTC**



ROMA/URBE (RM) 24 m. s.l.m. (a.s.l.)

**GRAFICI ANEMOMETRICI
(ANEMOMETRIC DIAGRAMS)**



I diagrammi del vento sono ordinati per stagione come la tabella seguente.
(The anemometric diagrams are ordered by season as follows)

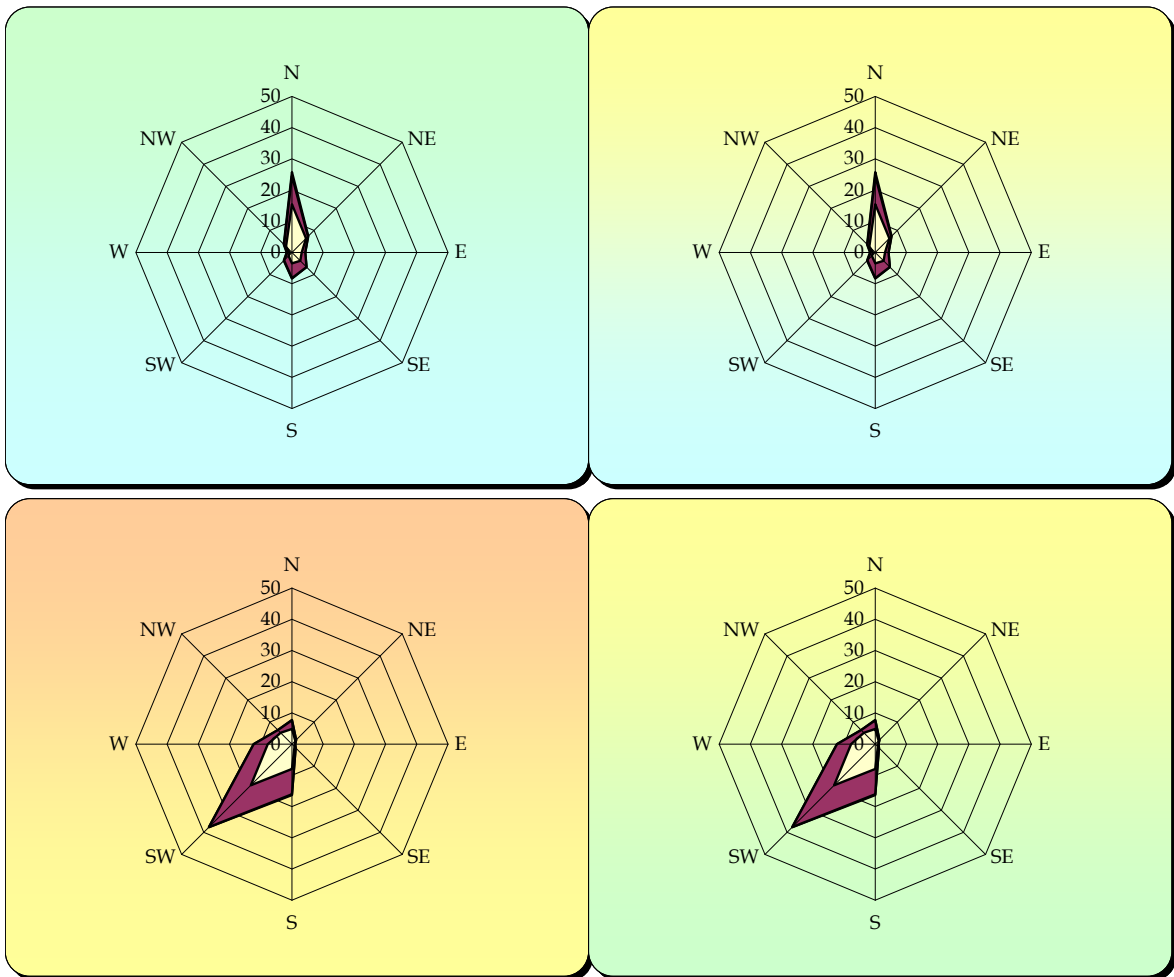
INVERNO (Dic. - Gen. - Feb.) WINTER (Dec. - Jan. - Feb.) % calme di vento = 68 % Wind Calm =	PRIMAVERA (Mar. - Apr. - Mag.) SPRING (Mar. - Apr. - May.) % calme di vento = 70 % Wind Calm =
ESTATE (Giu. - Lug. - Ago.) SUMMER (Jun. - Jul. - Aug.) % calme di vento = 78 % Wind Calm =	AUTUNNO (Set. - Ott. - Nov.) AUTUMN (Sep. - Oct. - Nov.) % calme di vento = 75 % Wind Calm =

Periodo di riferimento dei dati (Period of reference considered to get data) = **1971 ÷ 2000**
Frequenze percentuali alle ore (Percentage frequency of occurrence at) = **06 UTC**



ROMA/URBE (RM) 24 m. s.l.m. (a.s.l.)

**GRAFICI ANEMOMETRICI
(ANEMOMETRIC DIAGRAMS)**



I diagrammi del vento sono ordinati per stagione come la tabella seguente.
(The anemometric diagrams are ordered by season as follows)

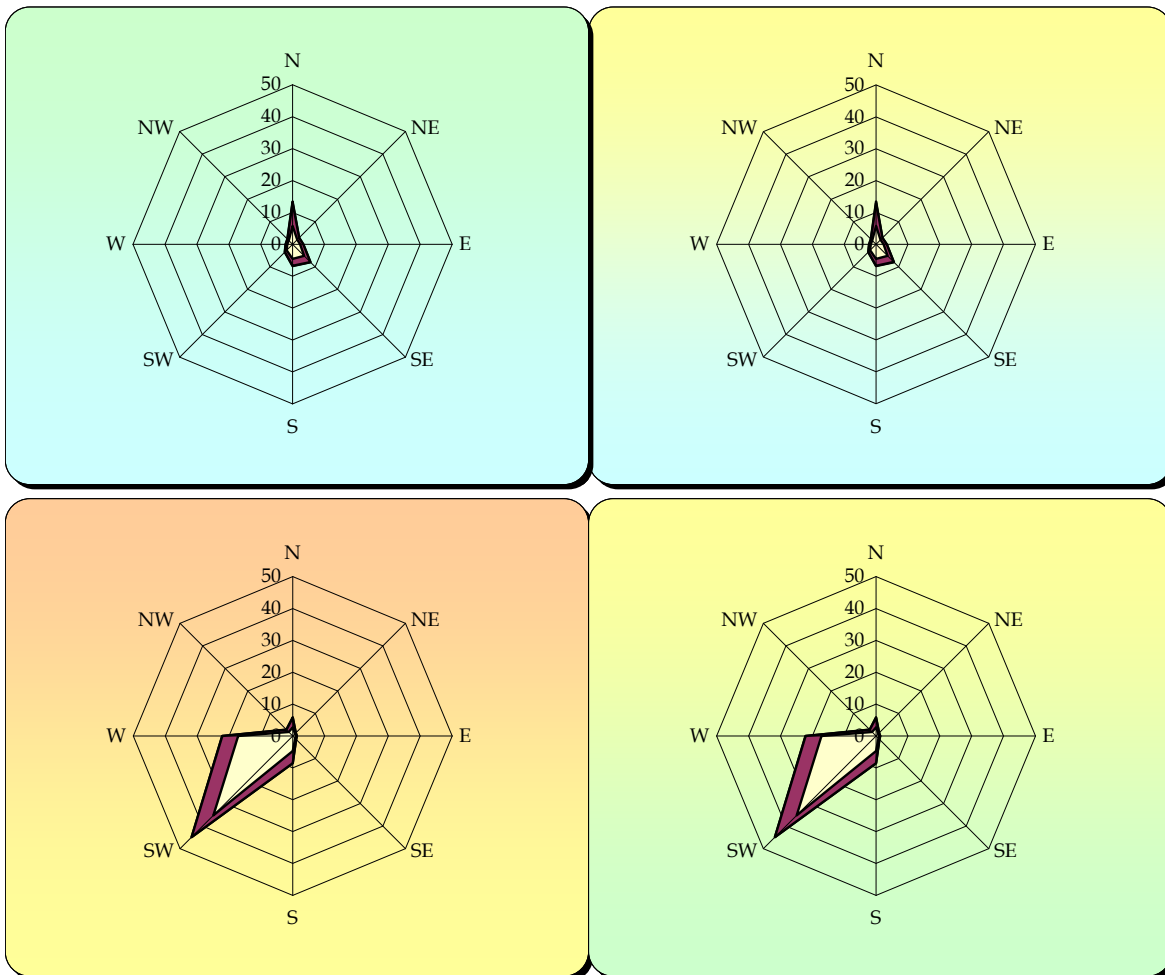
INVERNO (Dic. - Gen. - Feb.) WINTER (Dec. - Jan. - Feb.)	PRIMAVERA (Mar. - Apr. - Mag.) SPRING (Mar. - Apr. - May.)
% calme di vento = % Wind Calm = 38	% calme di vento = % Wind Calm = 17
ESTATE (Giu. - Lug. - Ago.) SUMMER (Jun. - Jul. - Aug.)	AUTUNNO (Set. - Ott. - Nov.) AUTUMN (Sep. - Oct. - Nov.)
% calme di vento = % Wind Calm = 13	% calme di vento = % Wind Calm = 33

Periodo di riferimento dei dati (Period of reference considered to get data) = **1971 ÷ 2000**
Frequenze percentuali alle ore (Percentage frequency of occurrence at) = **12 UTC**



ROMA/URBE (RM) 24 m. s.l.m. (a.s.l.)

**GRAFICI ANEMOMETRICI
(ANEMOMETRIC DIAGRAMS)**



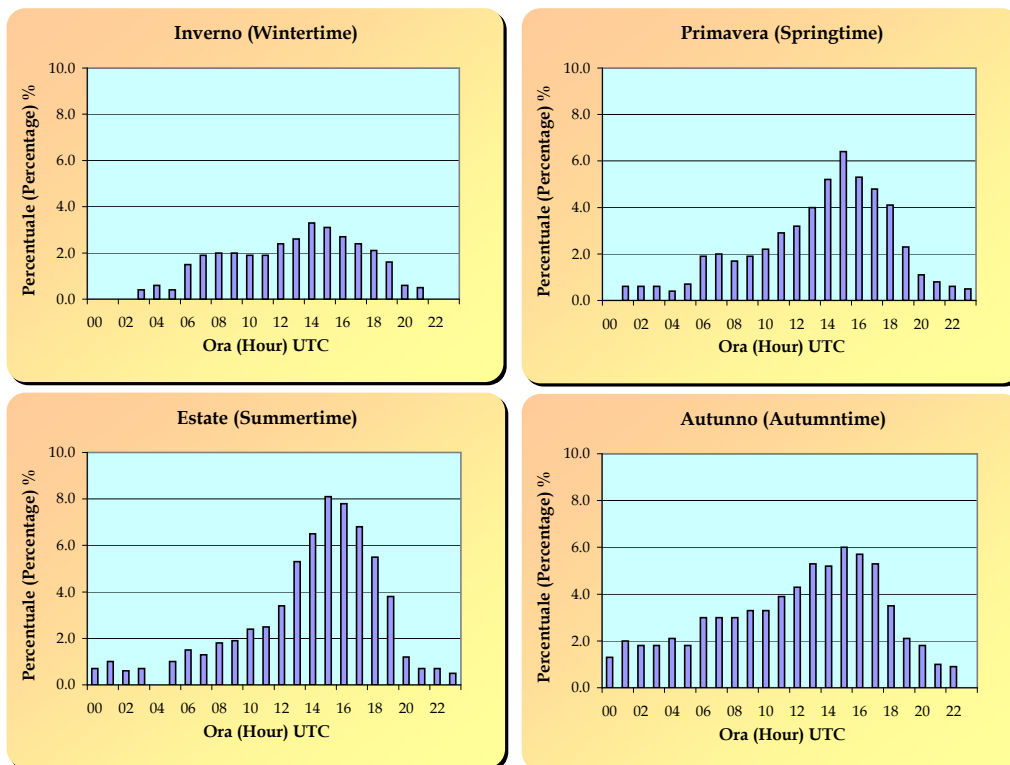
I diagrammi del vento sono ordinati per stagione come la tabella seguente.
(The anemometric diagrams are ordered by season as follows)

INVERNO (Dic. - Gen. - Feb.) WINTER (Dec. - Jan. - Feb.) % calme di vento = % Wind Calm =	57	PRIMAVERA (Mar. - Apr. - Mag.) SPRING (Mar. - Apr. - May.) % calme di vento = % Wind Calm =	22
ESTATE (Giu. - Lug. - Ago.) SUMMER (Jun. - Jul. - Aug.) % calme di vento = % Wind Calm =	11	AUTUNNO (Set. - Ott. - Nov.) AUTUMN (Sep. - Oct. - Nov.) % calme di vento = % Wind Calm =	54

Periodo di riferimento dei dati (Period of reference considered to get data) = **1971 ÷ 2000**
Frequenze percentuali alle ore (Percentage frequency of occurrence at) = **18 UTC**

**ROMA/URBE (RM) 24 m. s.l.m. (a.s.l.)**

PERCENTUALE DI CASI CON NUBI TEMPORALESCHES NEL
PERIODO 1973-2000 NELLE VARIE STAGIONI
(PERCENTAGE OF OBSERVED CUMULONIMBUS IN THE
PERIOD 1973-2000 FOR EACH SEASON)

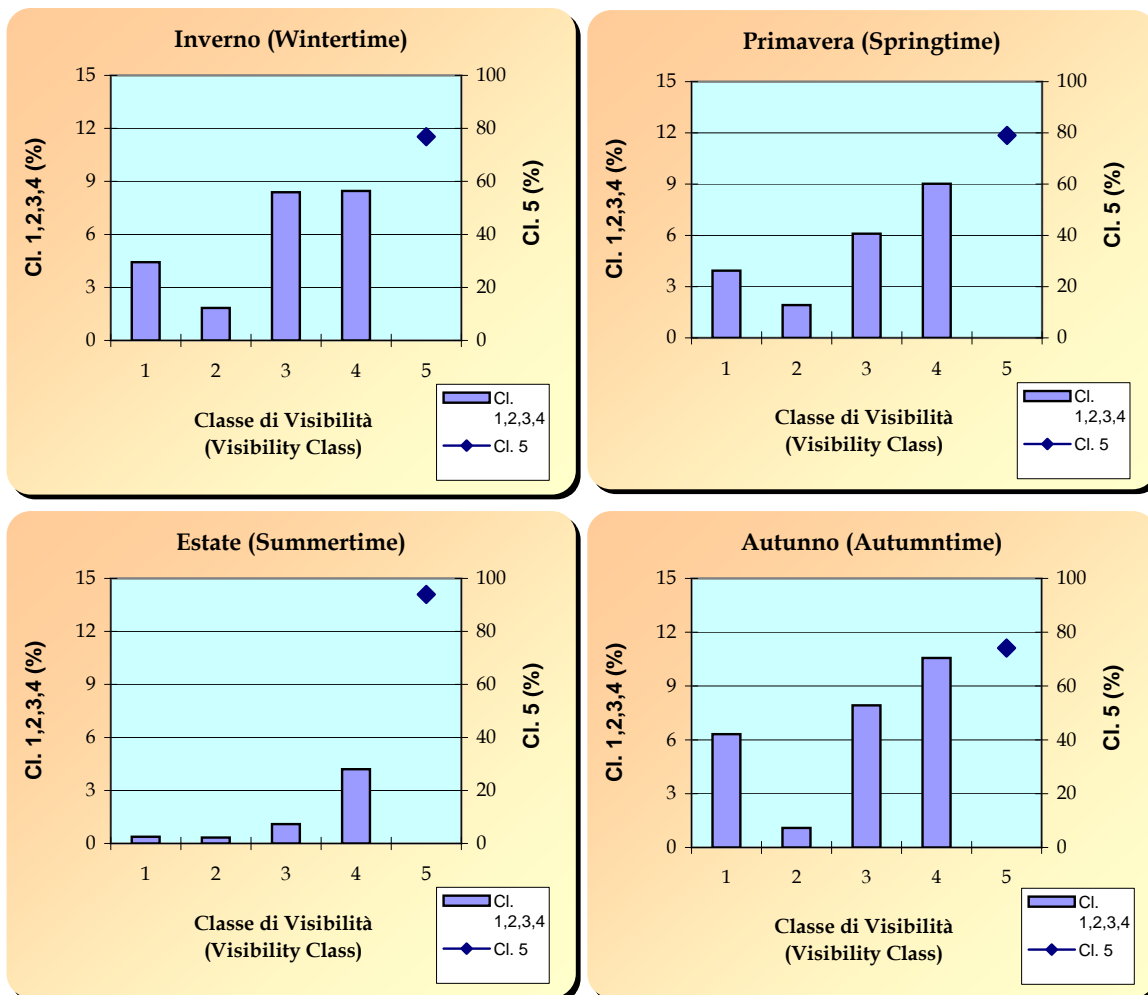


HH (Hour)	Inverno (Winter)	Primavera (Spring)	Estate (Summer)	Autunno (Autumn)
00			0.7	1.3
01		0.6	1.0	2.0
02		0.6	0.6	1.8
03	0.4	0.6	0.7	1.8
04	0.6	0.4		2.1
05	0.4	0.7	1.0	1.8
06	1.5	1.9	1.5	3.0
07	1.9	2.0	1.3	3.0
08	2.0	1.7	1.8	3.0
09	2.0	1.9	1.9	3.3
10	1.9	2.2	2.4	3.3
11	1.9	2.9	2.5	3.9
12	2.4	3.2	3.4	4.3
13	2.6	4.0	5.3	5.3
14	3.3	5.2	6.5	5.2
15	3.1	6.4	8.1	6.0
16	2.7	5.3	7.8	5.7
17	2.4	4.8	6.8	5.3
18	2.1	4.1	5.5	3.5
19	1.6	2.3	3.8	2.1
20	0.6	1.1	1.2	1.8
21	0.5	0.8	0.7	1.0
22		0.6	0.7	0.9
23		0.5	0.5	

N.B.: l'assenza del dato non significa che il valore sia nullo, ma la scarsità dei dati presenti non ne consente una elaborazione statistica significativa.
(Missing data doesn't mean null value but the scarcity of the data in the database doesn't allow a significant statistics elaboration).

**ROMA/URBE (RM) 24 m. s.l.m. (a.s.l.)**

PERCENTUALE DEI CASI DI VISIBILITA' COMPRESA NELLA RISPETTIVA CLASSE NEL PERIODO 1973-2000 ALLE 06 UTC
(VISIBILITY FREQUENCY FOR EACH CLASS IN THE PERIOD 1973-2000 AT 06 UTC)

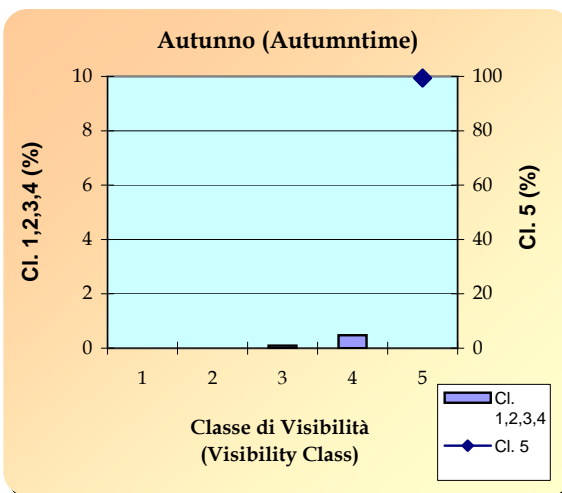
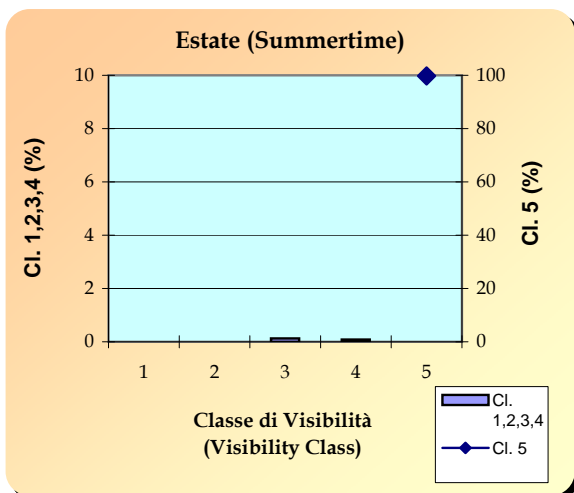
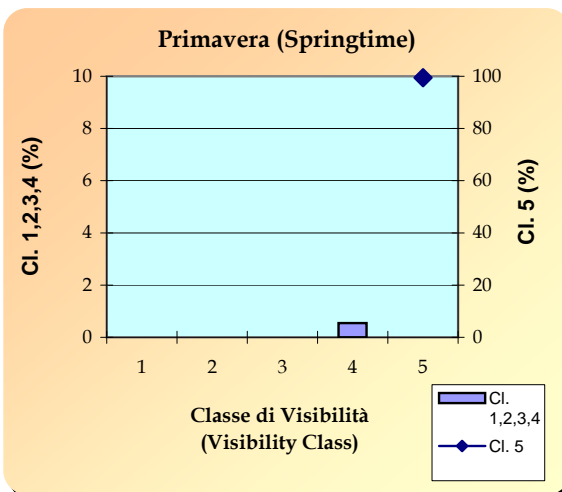
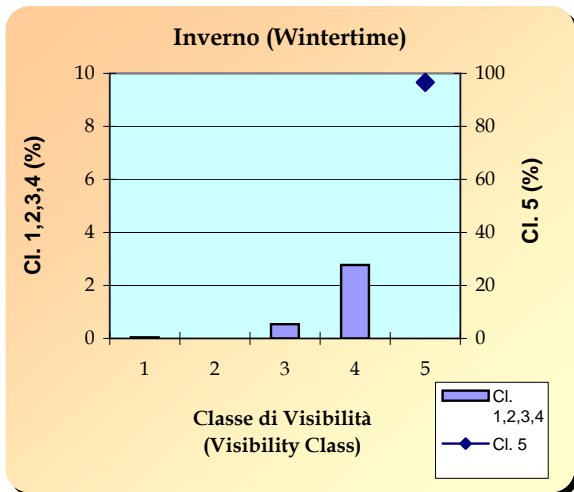


Ore 06 UTC (hour 06 UTC)					
Classe (Class)	Vis. (m) (Visibility)	Inverno (Winter)	Primavera (Spring)	Estate (Summer)	Autunno (Autumn)
1	0-100	4.4	3.9	0.4	6.3
2	101-200	1.8	1.9	0.3	1.1
3	201-1000	8.4	6.1	1.1	7.9
4	1001-2000	8.5	9.0	4.2	10.6
5	> 2000	76.9	79.0	94.0	74.1



ROMA/URBE (RM) 24 m. s.l.m. (a.s.l.)

PERCENTUALE DEI CASI DI VISIBILITA' COMPRESA NELLA RISPETTIVA CLASSE NEL PERIODO 1973-2000 ALLE 12 UTC
(VISIBILITY FREQUENCY FOR EACH CLASS IN THE PERIOD 1973-2000 AT 12 UTC)

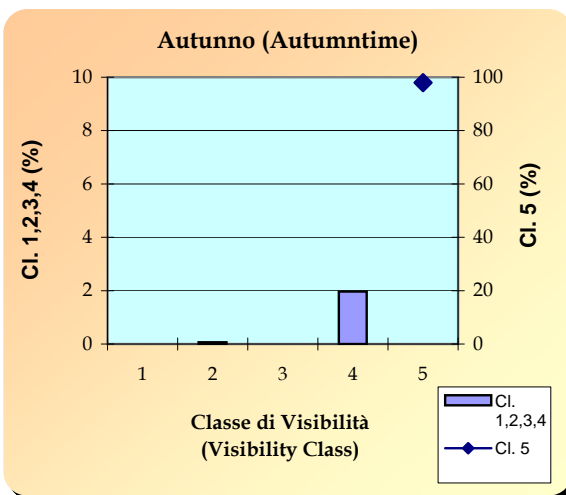
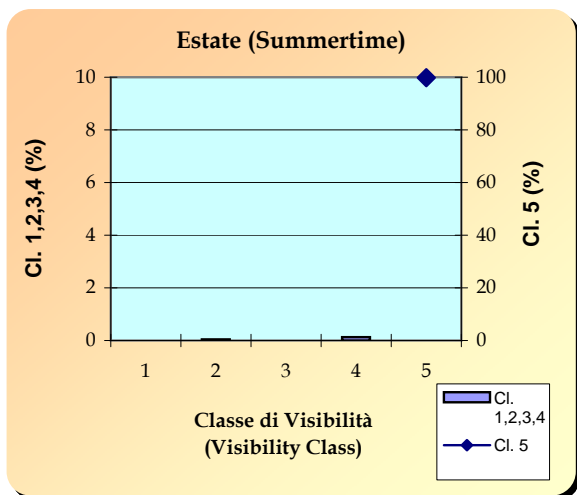
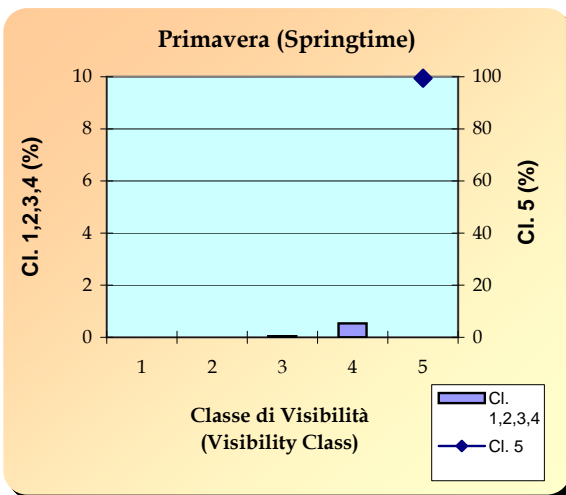
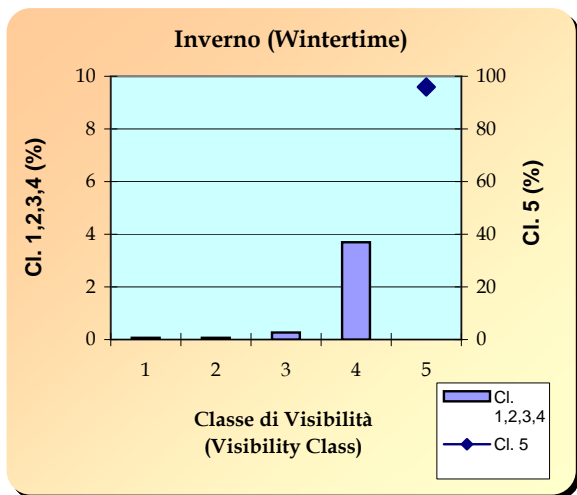


Ore 12 UTC (hour 12 UTC)					
Classe (Class)	Vis. (m) (Visibility)	Inverno (Winter)	Primavera (Spring)	Estate (Summer)	Autunno (Autumn)
1	0-100	0.0	0.0	0.0	0.0
2	101-200	0.0	0.0	0.0	0.0
3	201-1000	0.5	0.0	0.1	0.1
4	1001-2000	2.8	0.5	0.1	0.5
5	> 2000	96.6	99.5	99.8	99.4



ROMA/URBE (RM) 24 m. s.l.m. (a.s.l.)

PERCENTUALE DEI CASI DI VISIBILITA' COMPRESA NELLA RISPETTIVA CLASSE NEL PERIODO 1973-2000 ALLE 18 UTC
(VISIBILITY FREQUENCY FOR EACH CLASS IN THE PERIOD 1973-2000 AT 18 UTC)



Ore 18 UTC (hour 18 UTC)					
Classe (Class)	Vis. (m) (Visibility)	Inverno (Winter)	Primavera (Spring)	Estate (Summer)	Autunno (Autumn)
1	0-100	0.1	0.0	0.0	0.0
2	101-200	0.1	0.0	0.0	0.1
3	201-1000	0.3	0.0	0.0	0.0
4	1001-2000	3.7	0.5	0.1	2.0
5	> 2000	95.9	99.4	99.8	98.0