

NAYARIT

---RED FEDERAL LIBRE---

1	CRUCERO DE SAN BLAS - SAN BLAS	MEX-074
2	ENT. ACAPONETA - EL NOVILLERO	MEX-068
3	ENT. SANTIAGO IXCUINTLA - PLAYA LOS CORCHOS	MEX-072
4	GUADALAJARA - TEPIC	MEX-015
5	LIBRAMIENTO DE TEPIC	MEX
6	PEÑITAS - TUXPAN	MEX
7	RAMAL A ACAPONETA	MEX
8	RAMAL A ESTACION NANCHI	MEX
9	RAMAL A ESTACION RUIZ	MEX-044
10	RAMAL A LA LAGUNA DE SANTA MARIA	MEX
11	RAMAL A MECATAN	MEX
12	RAMAL A NUEVO AEROPUERTO DE TEPIC	MEX
13	RAMAL A PUNTA MITA	MEX
14	RAMAL A SANTA CRUZ	MEX
15	SANTA CRUZ - SAN BLAS	MEX
16	TEPIC - IXTAPAN DE LA CONCEPCION	MEX-076
17	TEPIC - MAZATLAN	MEX-015
18	TEPIC - PRESA AGUAMILPAS	MEX
19	TEPIC - PUERTO VALLARTA	MEX-200

---RED FEDERAL DE CUOTA---

20	CHAPALILLA - COMPOSTELA (CUOTA)	MEX-D
21	GUADALAJARA - TEPIC (CUOTA)	MEX-015D
22	TEPIC - MAZATLAN (CUOTA)	MEX-015D

---RED ESTATAL LIBRE---

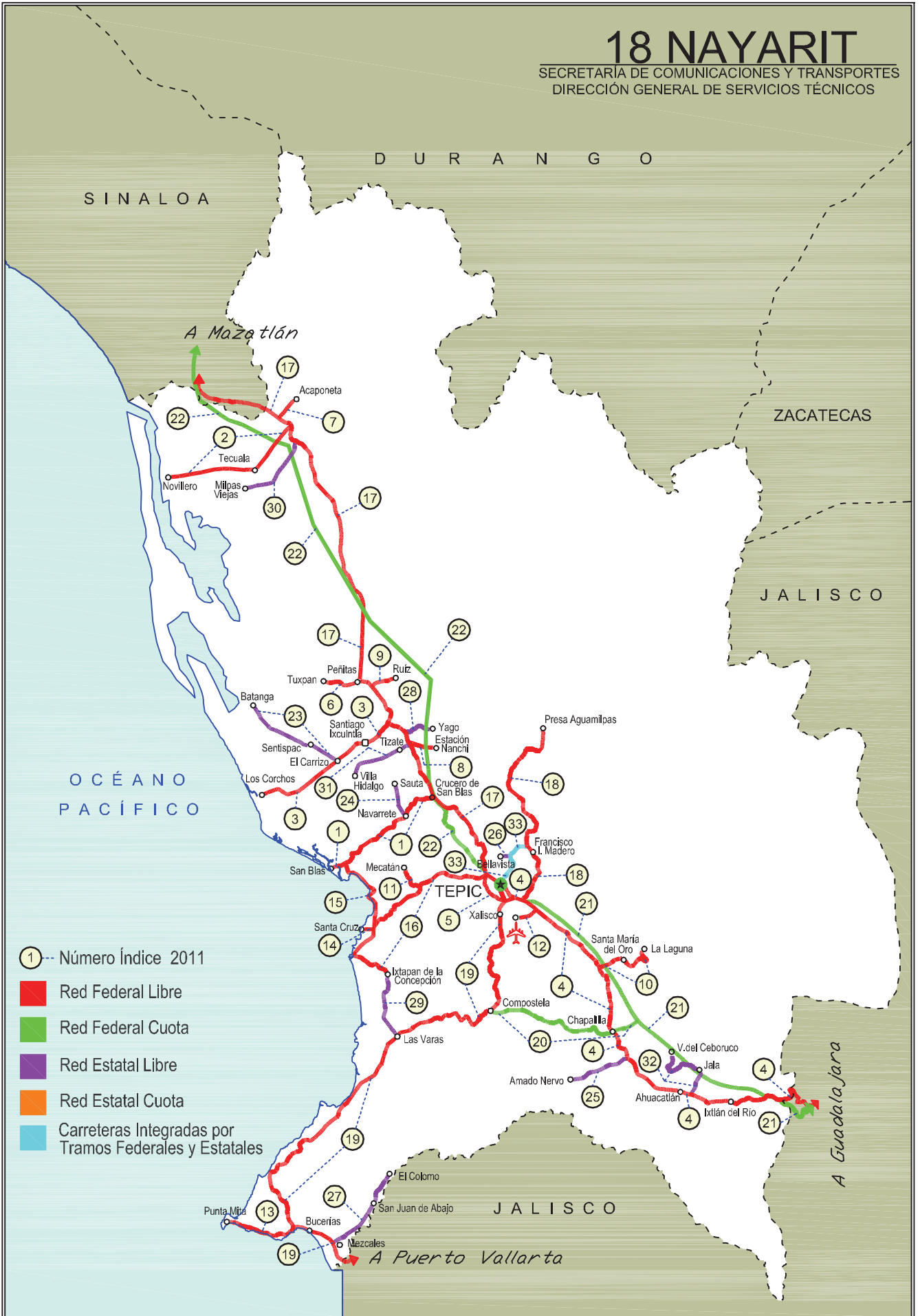
23	EL CARRIZO - LA BATANGA	NAY-078
24	NAVARRETE - SAUTA	NAY-013
25	RAMAL A AMADO NERVO	NAY
26	RAMAL A BELLAVISTA	NAY-059
27	RAMAL A EL COLOMO	NAY
28	RAMAL A ESTACION YAGO	NAY
29	RAMAL A IXTAPAN DE LA CONCEPCION	NAY
30	RAMAL A MILPAS VIEJAS	NAY
31	RAMAL A VILLA HIDALGO NAY	NAY
32	RAMAL A VOLCAN DEL CEBORUCO	NAY

---CARRETERAS INTEGRADAS POR TRAMOS FEDERALES Y ESTATALES---

33	TEPIC - FRANCISCO I. MADERO	NAY-MEX
----	-----------------------------	---------

18 NAYARIT

SECRETARÍA DE COMUNICACIONES Y TRANSPORTES
DIRECCIÓN GENERAL DE SERVICIOS TÉCNICOS



- ① --- Número Índice 2011
- Red Federal Libre
- Red Federal Cuota
- Red Estatal Libre
- Red Estatal Cuota
- Carreteras Integradas por Tramos Federales y Estatales

NAYARIT

1 CARR: CRUCERO DE SAN BLAS - SAN BLAS

CLAVE: 18229

RUTA: MEX-074

AÑO: 2010

LUGAR	ESTACION				CLASIFICACION VEHICULAR EN PORCIENTO								COORDENADAS						
	KM	TE	SC	TDPA	A	B	C2	C3	T3S2	T3S3	T3S2R4	OTROS	A	B	C	K'	D	LATITUD	LONGITUD
T. C. TEPIC - MAZATLAN	0.00	3	0	2785	88.1	2.8	4.3	1.8	1.4	0.4	0.0	1.2	88.1	2.8	9.1	0.098	0.509	21.691268	-105.055408
NAVARRETE	11.00	3	0	2703	93.5	1.5	2.7	0.9	0.5	0.2	0.0	0.7	93.5	1.5	5.0	0.102	0.515	21.647236	-105.121979
SAN BLAS	36.00	1	0	3839	92.8	2.0	3.4	1.1	0.4	0.1	0.0	0.2	92.8	2.0	5.2	0.113	0.509	21.544237	-105.274130

2 CARR: ENT. ACAPONETA - EL NOVILLERO

CLAVE: 18023

RUTA: MEX-068

AÑO: 2010

LUGAR	ESTACION				CLASIFICACION VEHICULAR EN PORCIENTO								COORDENADAS						
	KM	TE	SC	TDPA	A	B	C2	C3	T3S2	T3S3	T3S2R4	OTROS	A	B	C	K'	D	LATITUD	LONGITUD
T. C. TEPIC - MAZATLAN	0.00	3	0	4683	87.8	3.1	4.6	1.7	1.3	0.6	0.0	0.9	87.8	3.1	9.1	0.100	0.509	22.484749	-105.389829
TECUALA	13.00	1	0	4742	85.3	5.8	4.0	2.7	0.8	0.5	0.0	0.9	85.3	5.8	8.9	0.085	0.508	22.413571	-105.448798
TECUALA	13.00	3	0	3394	92.1	2.9	2.5	1.1	0.5	0.3	0.0	0.6	92.1	2.9	5.0	0.097	0.509	22.399886	-105.466795
PLAYA NOVILLERO	36.00																		
EL NOVILLERO	36.00	1	0	2152	90.9	4.5	2.4	1.1	0.6	0.1	0.0	0.4	90.9	4.5	4.6	0.108	0.523	22.382823	-105.657533

3 CARR: ENT. SANTIAGO IXCUINTLA - PLAYA LOS CORCHOS

CLAVE: 18016

RUTA: MEX-072

AÑO: 2010

LUGAR	ESTACION				CLASIFICACION VEHICULAR EN PORCIENTO								COORDENADAS						
	KM	TE	SC	TDPA	A	B	C2	C3	T3S2	T3S3	T3S2R4	OTROS	A	B	C	K'	D	LATITUD	LONGITUD
T. C. TEPIC - MAZATLAN	0.00	3	0	3729	90.6	4.3	2.1	1.0	1.0	0.4	0.0	0.6	90.6	4.3	5.1	0.095	0.501	21.851227	-105.155857
SANTIAGO IXCUINTLA	8.00	1	0	6068	88.7	4.0	2.7	1.6	1.0	0.4	0.0	1.6	88.7	4.0	7.3	0.096	0.503	21.813925	-105.195928
SANTIAGO IXCUINTLA	8.00	3	0	5698	87.6	4.9	2.9	1.8	0.9	0.2	0.0	1.7	87.6	4.9	7.5	0.094	0.503	21.809073	-105.218980
T. DER. MEXCALTITAN	17.00	1	0	3886	90.8	2.7	3.3	1.4	0.6	0.2	0.0	1.0	90.8	2.7	6.5	0.108	0.517	21.773552	-105.270935
T. DER. MEXCALTITAN	17.00	3	0	3766	90.8	2.4	4.1	1.3	0.4	0.2	0.0	0.8	90.8	2.4	6.8	0.107	0.501	21.769765	-105.276073
PLAYA LOS CORCHOS	39.00	1	0	1827	92.4	2.7	2.9	1.5	0.4	0.1	0.0	0.0	92.4	2.7	4.9	0.111	0.518	21.696263	-105.452433

4 CARR: GUADALAJARA - TEPIC

CLAVE: 00031

RUTA: MEX-015

AÑO: 2010

LUGAR	ESTACION				CLASIFICACION VEHICULAR EN PORCIENTO								COORDENADAS						
	KM	TE	SC	TDPA	A	B	C2	C3	T3S2	T3S3	T3S2R4	OTROS	A	B	C	K'	D	LATITUD	LONGITUD
GUADALAJARA	0.00																		
T. DER. BASE AEREA No. 2	8.30	3	1	17637	81.5	2.9	4.0	2.4	3.4	1.3	1.4	3.1	81.5	2.9	15.6	0.085	0.513	20.705504	-103.463428
T. DER. BASE AEREA No. 2	8.30	3	2	18611	80.7	3.9	5.2	2.5	2.9	1.4	0.5	2.9	80.7	3.9	15.4	0.088	0.513	20.705504	-103.463428
T. IZO. LA PRIMAVERA	20.50	1	1	14969	82.7	2.0	5.1	2.8	4.6	1.6	0.2	1.0	82.7	2.0	15.3	0.093	0.513	20.733014	-103.602612
T. IZO. LA PRIMAVERA	20.50	1	2	14197	76.8	2.2	7.7	3.3	5.3	2.1	0.5	2.1	76.8	2.2	21.0	0.096	0.513	20.733014	-103.602612
EL ARENAL	36.20	1	0	12052	73.2	2.8	7.3	6.7	6.4	3.2	0.2	0.2	73.2	2.8	24.0	0.071	0.502	20.771706	-103.684107

NAYARIT

4 CARR: GUADALAJARA - TEPIC

CLAVE: 00031

RUTA: MEX-015

AÑO: 2010

LUGAR	ESTACION				CLASIFICACION VEHICULAR EN PORCIENTO								COORDENADAS						
	KM	TE	SC	TDPA	A	B	C2	C3	T3S2	T3S3	T3S2R4	OTROS	A	B	C	K'	D	LATITUD	LONGITUD
TEQUILA	57.50	3	0	9453	73.9	2.8	7.2	6.0	6.5	3.2	0.2	0.2	73.9	2.8	23.3	0.073	0.506	20.894922	-103.836419
MAGDALENA	76.80	3	0	7760	58.7	4.1	10.6	9.6	12.5	3.8	0.2	0.5	58.7	4.1	37.2	0.079	0.505	20.925900	-103.997977
LIM. EDOS. TERM. JAL. PPIA. NAY.	123.09																		
IXTLAN DEL RIO	138.84	1	0	8766	83.0	3.5	5.8	2.3	3.6	1.3	0.1	0.4	83.0	3.5	13.5	0.071	0.505	21.030655	-104.357736
IXTLAN DEL RIO	138.84	3	0	7966	82.4	3.6	6.3	2.4	3.6	1.2	0.1	0.4	82.4	3.6	14.0	0.084	0.508	21.037066	-104.393676
AHUACATLAN	152.00	1	0	9726	82.4	3.7	5.8	2.3	4.0	1.3	0.1	0.4	82.4	3.7	13.9	0.066	0.508	21.054529	-104.476570
AHUACATLAN	152.00	3	0	8428	82.1	3.7	6.0	2.5	3.9	1.3	0.1	0.4	82.1	3.7	14.2	0.065	0.511	21.058061	-104.486846
T. IZQ. AMADO NERVO	167.32	1	0	9620	82.0	3.7	6.1	2.5	3.8	1.4	0.1	0.4	82.0	3.7	14.3	0.068	0.503	21.127607	-104.599972
T. IZQ. COMPOSTELA	175.50	1	0	10998	82.3	3.7	6.1	2.3	3.8	1.3	0.1	0.4	82.3	3.7	14.0	0.078	0.503	21.190311	-104.638255
T. IZQ. COMPOSTELA	175.50	3	0	9721	82.2	3.6	6.0	2.4	4.0	1.3	0.1	0.4	82.2	3.6	14.2	0.059	0.504	21.196314	-104.644968
T. DER. SANTA MARIA DEL ORO	196.00	1	0	10530	81.6	3.9	6.1	2.5	4.1	1.3	0.1	0.4	81.6	3.9	14.5	0.073	0.504	21.323776	-104.669505
T. DER. SANTA MARIA DEL ORO	196.00	3	0	7668	82.2	3.5	6.2	2.5	3.9	1.2	0.1	0.4	82.2	3.5	14.3	0.072	0.510	21.329941	-104.672367
SAN CAYETANO	215.90	3	0	9775	81.9	3.7	6.1	2.6	3.9	1.3	0.1	0.4	81.9	3.7	14.4	0.072	0.507	21.454854	-104.821432
T. IZQ. LIBRAMIENTO DE TEPIC	219.10	1	1	12889	79.2	3.5	6.5	2.0	4.6	2.7	0.0	1.5	79.2	3.5	17.3	0.066	0.506	21.467638	-104.840492
T. IZQ. LIBRAMIENTO DE TEPIC	219.10	1	2	13176	80.3	4.2	5.9	2.5	4.4	1.5	0.0	1.2	80.3	4.2	15.5	0.068	0.506	21.467638	-104.840492
T. IZQ. LIBRAMIENTO DE TEPIC	219.10	3	1	10771	81.3	3.4	5.6	3.1	3.0	1.8	0.0	1.8	81.3	3.4	15.3	0.083	0.504	21.470665	-104.848948
T. IZQ. LIBRAMIENTO DE TEPIC	219.10	3	2	10599	79.4	4.6	6.9	2.7	3.2	1.8	0.0	1.4	79.4	4.6	16.0	0.084	0.504	21.470665	-104.848948
T. IZQ. AEROPUERTO DE TEPIC	222.85	1	0	11615	79.4	4.1	5.3	2.0	5.9	2.0	0.0	1.3	79.4	4.1	16.5	0.079	0.500	21.446571	-104.811292
TEPIC	224.80	1	1	16908	80.7	4.7	5.5	2.4	3.6	1.6	0.0	1.5	80.7	4.7	14.6	0.065	0.503	21.471640	-104.851799
TEPIC	224.80	1	2	16718	78.3	5.8	6.4	2.4	4.3	1.2	0.0	1.6	78.3	5.8	15.9	0.075	0.503	21.471640	-104.851799

5 CARR: LIBRAMIENTO DE TEPIC

CLAVE: 18232

RUTA: MEX

AÑO: 2010

LUGAR	ESTACION				CLASIFICACION VEHICULAR EN PORCIENTO								COORDENADAS						
	KM	TE	SC	TDPA	A	B	C2	C3	T3S2	T3S3	T3S2R4	OTROS	A	B	C	K'	D	LATITUD	LONGITUD
T. C. GUADALAJARA - TEPIC	0.00																		
X. C. TEPIC - PUERTO VALLARTA	5.00	1	1	13856	83.4	3.3	3.7	2.5	3.7	1.4	0.0	2.0	83.4	3.3	13.3	0.098	0.504	21.467875	-104.884212
X. C. TEPIC - PUERTO VALLARTA	5.00	1	2	14076	83.6	2.5	4.6	2.2	3.1	1.7	0.0	2.3	83.6	2.5	13.9	0.091	0.504	21.467875	-104.884212
T. C. TEPIC - MAZATLAN	18.80	1	1	9756	81.7	5.0	4.3	2.5	3.1	1.5	0.0	1.9	81.7	5.0	13.3	0.082	0.528	21.518026	-104.925303
T. C. TEPIC - MAZATLAN	18.80	1	2	9803	80.7	3.9	4.5	2.7	3.8	1.7	0.0	2.7	80.7	3.9	15.4	0.082	0.528	21.518026	-104.925303

NAYARIT

6 CARR: PEÑITAS - TUXPAN

CLAVE: 18019

RUTA: MEX

AÑO: 2010

LUGAR	ESTACION				CLASIFICACION VEHICULAR EN PORCIENTO								COORDENADAS						
	KM	TE	SC	TDPA	A	B	C2	C3	T3S2	T3S3	T3S2R4	OTROS	A	B	C	K'	D	LATITUD	LONGITUD
T. C. TEPIC - MAZATLAN	0.00																		
PEÑITAS	0.00	3	0	5889	90.5	2.3	4.2	1.2	0.5	0.2	0.0	1.1	90.5	2.3	7.2	0.091	0.510	21.942375	-105.227593
TUXPAN	9.00	1	0	7827	90.4	2.8	3.3	1.1	1.3	0.4	0.0	0.7	90.4	2.8	6.8	0.089	0.503	21.942138	-105.280452

7 CARR: RAMAL A ACAPONETA

CLAVE: 18038

RUTA: MEX

AÑO: 2010

LUGAR	ESTACION				CLASIFICACION VEHICULAR EN PORCIENTO								COORDENADAS						
	KM	TE	SC	TDPA	A	B	C2	C3	T3S2	T3S3	T3S2R4	OTROS	A	B	C	K'	D	LATITUD	LONGITUD
T. C. TEPIC - MAZATLAN	0.00	3	1	5986	86.4	3.3	4.4	1.5	1.3	0.7	0.0	2.4	86.4	3.3	10.3	0.078	0.505	22.489601	-105.380768
T. C. TEPIC - MAZATLAN	0.00	3	2	5870	90.1	1.6	3.0	2.2	1.2	0.5	0.0	1.4	90.1	1.6	8.3	0.084	0.505	22.489601	-105.380768
ACAPONETA	3.00																		

8 CARR: RAMAL A ESTACION NANCHI

CLAVE: 18068

RUTA: MEX

AÑO: 2010

LUGAR	ESTACION				CLASIFICACION VEHICULAR EN PORCIENTO								COORDENADAS						
	KM	TE	SC	TDPA	A	B	C2	C3	T3S2	T3S3	T3S2R4	OTROS	A	B	C	K'	D	LATITUD	LONGITUD
T. C. TEPIC - MAZATLAN	0.00	3	0	1187	91.4	1.9	3.9	1.5	0.6	0.2	0.1	0.4	91.4	1.9	6.7	0.099	0.529	21.812651	-105.105558
ESTACION NANCHI	5.00																		

9 CARR: RAMAL A ESTACION RUIZ

CLAVE: 18026

RUTA: MEX-044

AÑO: 2010

LUGAR	ESTACION				CLASIFICACION VEHICULAR EN PORCIENTO								COORDENADAS						
	KM	TE	SC	TDPA	A	B	C2	C3	T3S2	T3S3	T3S2R4	OTROS	A	B	C	K'	D	LATITUD	LONGITUD
T. C. TEPIC - MAZATLAN	0.00	3	0	4959	89.5	4.2	2.5	1.5	0.9	0.5	0.0	0.9	89.5	4.2	6.3	0.101	0.502	21.934526	-105.190051
ESTACION RUIZ	5.50	1	0	5494	91.6	3.4	2.0	1.1	1.0	0.4	0.0	0.5	91.6	3.4	5.0	0.100	0.513	21.943399	-105.159026

10 CARR: RAMAL A LA LAGUNA DE SANTA MARIA

CLAVE: 18005

RUTA: MEX

AÑO: 2010

LUGAR	ESTACION				CLASIFICACION VEHICULAR EN PORCIENTO								COORDENADAS						
	KM	TE	SC	TDPA	A	B	C2	C3	T3S2	T3S3	T3S2R4	OTROS	A	B	C	K'	D	LATITUD	LONGITUD
T. C. GUADALAJARA - TEPIC	0.00	3	0	3469	91.5	1.4	3.8	1.8	0.7	0.3	0.0	0.5	91.5	1.4	7.1	0.084	0.509	21.326949	-104.668496
SANTA MARIA DEL ORO	11.50	1	0	3246	89.6	1.7	4.7	1.5	1.3	0.5	0.0	0.7	89.6	1.7	8.7	0.091	0.508	21.326160	-104.595592
LAGUNA DE SANTA MARIA	20.00	1	0	880	95.1	0.6	2.9	0.6	0.1	0.3	0.1	0.3	95.1	0.6	4.3	0.159	0.513	21.360362	-104.570486

NAYARIT

11 CARR: RAMAL A MECATAN

CLAVE: 18010

RUTA: MEX

AÑO: 2010

LUGAR	ESTACION				CLASIFICACION VEHICULAR EN PORCIENTO								COORDENADAS						
	KM	TE	SC	TDPA	A	B	C2	C3	T3S2	T3S3	T3S2R4	OTROS	A	B	C	K'	D	LATITUD	LONGITUD
T. C. (TEPIC - MAZATLAN) - IXTAPAN DE LA CONCEPCION	0.00	3	0	881	89.4	2.7	4.8	1.9	0.4	0.2	0.1	0.5	89.4	2.7	7.9	0.079	0.501	21.499539	-105.083263
MECATAN	9.00																		

12 CARR: RAMAL A NUEVO AEROPUERTO DE TEPIC

CLAVE: 18012

RUTA: MEX

AÑO: 2010

LUGAR	ESTACION				CLASIFICACION VEHICULAR EN PORCIENTO								COORDENADAS						
	KM	TE	SC	TDPA	A	B	C2	C3	T3S2	T3S3	T3S2R4	OTROS	A	B	C	K'	D	LATITUD	LONGITUD
T. C. GUADALAJARA - TEPIC	0.00	3	0	4080	91.0	2.1	4.2	1.6	0.5	0.2	0.0	0.4	91.0	2.1	6.9	0.086	0.517	21.445711	-104.818736
AEROPUERTO DE TEPIC	5.00																		

13 CARR: RAMAL A PUNTA MITA

CLAVE: 18020

RUTA: MEX

AÑO: 2010

LUGAR	ESTACION				CLASIFICACION VEHICULAR EN PORCIENTO								COORDENADAS						
	KM	TE	SC	TDPA	A	B	C2	C3	T3S2	T3S3	T3S2R4	OTROS	A	B	C	K'	D	LATITUD	LONGITUD
T. C. TEPIC - PUERTO VALLARTA	0.00	3	0	5457	87.5	3.3	4.6	2.3	0.7	0.4	0.0	1.2	87.5	3.3	9.2	0.093	0.515	20.759812	-105.374808
SAN IGNACIO	9.00	3	0	4935	87.6	3.0	5.6	1.7	0.4	0.2	0.0	1.5	87.6	3.0	9.4	0.095	0.513	20.758935	-105.467801
PUNTA MITA	18.00																		

14 CARR: RAMAL A SANTA CRUZ

CLAVE: 18030

RUTA: MEX

AÑO: 2010

LUGAR	ESTACION				CLASIFICACION VEHICULAR EN PORCIENTO								COORDENADAS						
	KM	TE	SC	TDPA	A	B	C2	C3	T3S2	T3S3	T3S2R4	OTROS	A	B	C	K'	D	LATITUD	LONGITUD
T. C. TEPIC - IXTAPAN DE LA CONCEPCION	0.00																		
SANTA CRUZ	1.30	1	0	2069	90.4	2.8	4.4	1.3	0.3	0.1	0.0	0.7	90.4	2.8	6.8	0.076	0.501	21.433660	-105.191049

15 CARR: SANTA CRUZ - SAN BLAS

CLAVE: 18230

RUTA: MEX

AÑO: 2010

LUGAR	ESTACION				CLASIFICACION VEHICULAR EN PORCIENTO								COORDENADAS						
	KM	TE	SC	TDPA	A	B	C2	C3	T3S2	T3S3	T3S2R4	OTROS	A	B	C	K'	D	LATITUD	LONGITUD
SANTA CRUZ	0.00	3	0	2211	92.2	1.9	3.3	0.9	0.7	0.2	0.0	0.8	92.2	1.9	5.9	0.143	0.517	21.434997	-105.186830
PLAYA LOS COCOS	3.90	1	0	2051	92.8	1.8	3.0	1.0	0.6	0.1	0.0	0.7	92.8	1.8	5.4	0.168	0.505	21.461920	-105.187640
ATICAMA	5.00	3	0	2921	90.7	1.4	5.1	1.2	0.6	0.1	0.0	0.9	90.7	1.4	7.9	0.098	0.537	21.486530	-105.192572
T. C. CRUCERO SAN BLAS - SAN BLAS	17.00	1	0	2279	89.6	2.9	4.8	1.0	0.4	0.2	0.0	1.1	89.6	2.9	7.5	0.162	0.517	21.550303	-105.254189

NAYARIT

16 CARR:TEPIC - IXTAPAN DE LA CONCEPCION

CLAVE: 18028

RUTA: MEX-076

AÑO: 2010

LUGAR	ESTACION				CLASIFICACION VEHICULAR EN PORCIENTO								COORDENADAS						
	KM	TE	SC	TDPA	A	B	C2	C3	T3S2	T3S3	T3S2R4	OTROS	A	B	C	K'	D	LATITUD	LONGITUD
T. C. TEPIC - MAZATLAN	0.00	3	0	13406	90.2	1.7	4.7	1.1	0.9	0.4	0.0	1.0	90.2	1.7	8.1	0.064	0.508	21.521801	-104.931666
T. DER. MECATAN	19.00	1	0	2505	92.7	1.4	2.5	1.1	1.1	0.6	0.0	0.6	92.7	1.4	5.9	0.079	0.523	21.501785	-105.080903
T. DER. MECATAN	19.00	3	0	1949	91.8	1.6	2.9	1.1	1.5	0.5	0.0	0.6	91.8	1.6	6.6	0.130	0.510	21.498910	-105.082622
JALCOCOTAN	27.00	1	0	2360	91.2	1.6	3.0	1.4	1.3	0.5	0.0	1.0	91.2	1.6	7.2	0.092	0.506	21.485449	-105.088112
T. DER. SANTA CRUZ	50.00	3	0	1953	91.6	2.0	3.3	1.3	0.7	0.6	0.0	0.5	91.6	2.0	6.4	0.120	0.508	21.426773	-105.184192
IXTAPAN DE LA CONCEPCION	77.42	1	0	1609	94.0	0.4	3.2	1.1	0.4	0.2	0.0	0.7	94.0	0.4	5.6	0.105	0.505	21.309276	-105.154070

17 CARR:TEPIC - MAZATLAN

CLAVE: 00500

RUTA: MEX-015

AÑO: 2010

LUGAR	ESTACION				CLASIFICACION VEHICULAR EN PORCIENTO								COORDENADAS						
	KM	TE	SC	TDPA	A	B	C2	C3	T3S2	T3S3	T3S2R4	OTROS	A	B	C	K'	D	LATITUD	LONGITUD
TEPIC	0.00	3	1	8291	77.9	4.8	4.6	3.0	6.8	1.0	1.7	0.2	77.9	4.8	17.3	0.078	0.505	21.512258	-104.906429
TEPIC	0.00	3	2	8470	77.7	5.0	4.8	3.1	6.4	1.1	1.7	0.2	77.7	5.0	17.3	0.083	0.505	21.512258	-104.906429
T. IZQ. LIBRAMIENTO DE TEPIC	2.56	1	1	11186	78.1	4.8	4.7	3.1	6.4	1.0	1.7	0.2	78.1	4.8	17.1	0.068	0.505	21.521925	-104.924243
T. IZQ. LIBRAMIENTO DE TEPIC	2.56	1	2	11391	76.8	5.1	4.8	3.2	6.8	1.2	1.9	0.2	76.8	5.1	18.1	0.064	0.505	21.521925	-104.924243
T. IZQ. AUT. TEPIC - ENT. SAN BLAS (CUOTA)	3.70	3	0	8129	77.4	4.9	4.8	3.2	6.6	1.1	1.8	0.2	77.4	4.9	17.7	0.074	0.502	21.533186	-104.931728
LOS OTATES	19.80	3	0	8183	77.3	4.9	4.9	3.1	6.7	1.2	1.7	0.2	77.3	4.9	17.8	0.076	0.500	21.635713	-104.969455
T. IZQ. JUMATAN	28.52	1	0	7140	77.5	5.0	4.8	3.2	6.5	1.0	1.8	0.2	77.5	5.0	17.5	0.063	0.509	21.669918	-105.023261
T. IZQ. JUMATAN	28.52	3	1	7860	78.0	4.8	4.4	3.0	6.7	1.1	1.8	0.2	78.0	4.8	17.2	0.067	0.502	21.667908	-105.030929
T. IZQ. JUMATAN	28.52	3	2	7924	77.5	4.8	4.9	3.0	6.8	1.1	1.7	0.2	77.5	4.8	17.7	0.073	0.502	21.667908	-105.030929
T. IZQ. SAN BLAS	33.54	1	1	6527	77.8	4.7	4.6	3.2	6.6	1.1	1.8	0.2	77.8	4.7	17.5	0.094	0.511	21.683062	-105.045642
T. IZQ. SAN BLAS	33.54	1	2	6813	78.5	4.4	4.5	3.2	6.3	1.1	1.8	0.2	78.5	4.4	17.1	0.099	0.511	21.683062	-105.045642
T. IZQ. VILLA HIDALGO	48.12	1	0	12510	77.6	4.7	4.9	3.1	6.6	1.1	1.8	0.2	77.6	4.7	17.7	0.058	0.507	21.805057	-105.101892
T. IZQ. VILLA HIDALGO	48.12	3	0	10970	77.1	4.8	4.8	3.3	6.9	1.1	1.8	0.2	77.1	4.8	18.1	0.062	0.505	21.809732	-105.103792
T. IZQ. SANTIAGO IXCUINTLA	56.42	1	0	10992	77.9	4.9	4.7	3.1	6.4	1.1	1.7	0.2	77.9	4.9	17.2	0.073	0.508	21.853605	-105.151665
T. IZQ. SANTIAGO IXCUINTLA	56.42	3	0	10455	78.7	4.6	4.4	3.0	6.4	1.0	1.7	0.2	78.7	4.6	16.7	0.078	0.506	21.859368	-105.155968
T. IZQ. TUXPAN	70.60	1	0	13091	77.9	4.6	4.6	3.1	6.7	1.1	1.8	0.2	77.9	4.6	17.5	0.060	0.504	21.944057	-105.217791
T. IZQ. TUXPAN	70.60	3	0	13664	77.4	4.9	4.9	3.1	6.5	1.1	1.9	0.2	77.4	4.9	17.7	0.057	0.507	21.951730	-105.221050
T. DER. ROSAMORADA	90.70	3	0	11035	76.5	5.1	5.0	3.2	7.1	1.1	1.8	0.2	76.5	5.1	18.4	0.065	0.504	22.120927	-105.218078
TIERRA GENEROSA	110.40	1	0	7541	77.7	4.8	4.8	3.1	6.4	1.2	1.8	0.2	77.7	4.8	17.5	0.061	0.503	22.292708	-105.272507
T. DER. ACAPONETA	136.52	1	0	10784	78.6	4.0	5.9	3.2	6.7	1.4	0.1	0.1	78.6	4.0	17.4	0.062	0.502	22.478327	-105.385826
T. DER. ACAPONETA	136.52	3	0	5338	79.4	3.6	5.6	3.1	6.5	1.6	0.1	0.1	79.4	3.6	17.0	0.074	0.514	22.492194	-105.383865
LIM. EDOS. TERM. NAY. PPIA. SIN.	144.60																		
ESCUINAPA DE HIDALGO	200.00	1	0	4517	80.1	3.9	5.6	3.0	5.8	1.4	0.1	0.1	80.1	3.9	16.0	0.080	0.506	22.833206	-105.762901
ESCUINAPA DE HIDALGO	200.00	3	0	4731	78.6	4.0	5.8	3.1	6.8	1.5	0.1	0.1	78.6	4.0	17.4	0.082	0.509	22.837427	-105.788612

NAYARIT

17 CARR:TEPIC - MAZATLAN

CLAVE: 00500

RUTA: MEX-015

AÑO: 2010

LUGAR	ESTACION				CLASIFICACION VEHICULAR EN PORCIENTO								COORDENADAS						
	KM	TE	SC	TDPA	A	B	C2	C3	T3S2	T3S3	T3S2R4	OTROS	A	B	C	K'	D	LATITUD	LONGITUD
ROSARIO	221.71	1	0	12104	78.7	4.0	6.0	3.1	6.4	1.6	0.1	0.1	78.7	4.0	17.3	0.056	0.502	22.997162	-105.851018
ROSARIO	221.71	3	0	3427	79.3	3.9	5.7	3.0	6.4	1.5	0.1	0.1	79.3	3.9	16.8	0.094	0.515	23.002960	-105.867634
T. DER. DURANGO	267.99	1	0	3481	68.0	7.2	7.2	4.2	8.4	2.8	1.6	0.6	68.0	7.2	24.8	0.084	0.515	23.189465	-106.204150
T. DER. DURANGO	267.99	3	0	6386	69.5	6.4	7.2	4.0	8.0	2.8	1.5	0.6	69.5	6.4	24.1	0.075	0.513	23.189262	-106.211818
VILLA UNION	269.52	3	0	14501	68.3	6.6	7.8	4.1	8.2	2.9	1.5	0.6	68.3	6.6	25.1	0.065	0.503	23.192248	-106.229539
T. DER. LIBRAMIENTO DE MAZATLAN	288.87	1	1	13893	68.8	6.8	7.5	4.0	7.9	3.0	1.4	0.6	68.8	6.8	24.4	0.076	0.501	23.225635	-106.383632
T. DER. LIBRAMIENTO DE MAZATLAN	288.87	1	2	13956	68.3	6.8	7.7	4.0	8.2	2.9	1.5	0.6	68.3	6.8	24.9	0.080	0.501	23.225635	-106.383632
MAZATLAN	292.00																		

18 CARR:TEPIC - PRESA AGUAMILPAS

CLAVE: 18029

RUTA: MEX

AÑO: 2010

LUGAR	ESTACION				CLASIFICACION VEHICULAR EN PORCIENTO								COORDENADAS						
	KM	TE	SC	TDPA	A	B	C2	C3	T3S2	T3S3	T3S2R4	OTROS	A	B	C	K'	D	LATITUD	LONGITUD
T. C. GUADALAJARA - TEPIC	0.00	3	0	13096	86.2	1.1	6.6	1.8	1.7	0.7	0.0	1.9	86.2	1.1	12.7	0.079	0.504	21.472253	-104.848861
X. C. TEPIC - FCO. I. MADERO	17.50	3	0	2272	91.3	2.3	4.0	1.1	0.7	0.2	0.0	0.4	91.3	2.3	6.4	0.086	0.534	21.588358	-104.846764
PRESA AGUAMILPA	54.00	1	0	853	89.1	3.0	5.4	1.9	0.1	0.2	0.1	0.2	89.1	3.0	7.9	0.103	0.519	21.819271	-104.830803

19 CARR:TEPIC - PUERTO VALLARTA

CLAVE: 00068

RUTA: MEX-200

AÑO: 2010

LUGAR	ESTACION				CLASIFICACION VEHICULAR EN PORCIENTO								COORDENADAS						
	KM	TE	SC	TDPA	A	B	C2	C3	T3S2	T3S3	T3S2R4	OTROS	A	B	C	K'	D	LATITUD	LONGITUD
TEPIC	0.00	3	1	12917	81.4	4.2	4.1	2.6	3.5	1.8	1.2	1.2	81.4	4.2	14.4	0.065	0.508	21.491760	-104.895559
TEPIC	0.00	3	2	13345	81.8	4.2	3.9	2.7	3.4	1.7	1.1	1.2	81.8	4.2	14.0	0.065	0.508	21.491760	-104.895559
LIMITE DE ZONA URBANA TEPIC	1.80	3	1	11382	81.0	4.2	4.0	2.9	3.4	2.0	1.2	1.3	81.0	4.2	14.8	0.077	0.501	21.473262	-104.889662
LIMITE DE ZONA URBANA TEPIC	1.80	3	2	11437	81.9	4.0	4.1	2.7	3.4	1.7	1.1	1.1	81.9	4.0	14.1	0.081	0.501	21.473262	-104.889662
X. C. LIBRAMIENTO DE TEPIC	3.90	3	1	10293	80.7	4.3	4.3	2.9	3.4	1.9	1.2	1.3	80.7	4.3	15.0	0.073	0.505	21.467821	-104.888064
X. C. LIBRAMIENTO DE TEPIC	3.90	3	2	10489	82.5	4.1	3.7	2.5	3.2	1.8	1.1	1.1	82.5	4.1	13.4	0.084	0.505	21.467821	-104.888064
JALISCO	7.15	3	0	12043	82.5	3.9	3.8	2.6	3.2	1.8	1.0	1.2	82.5	3.9	13.6	0.069	0.505	21.434928	-104.899822
T. IZQ. EMILIANO ZAPATA	18.40	3	0	6921	81.0	4.5	4.0	2.7	3.5	1.9	1.1	1.3	81.0	4.5	14.5	0.077	0.506	21.364007	-104.918655
T. IZQ. COMPOSTELA (1° ACCESO)	35.80	1	0	6080	81.1	4.3	4.2	2.8	3.4	1.8	1.2	1.2	81.1	4.3	14.6	0.080	0.503	21.256404	-104.901565
T. IZQ. COMPOSTELA (1° ACCESO)	35.80	3	0	4081	82.2	4.2	3.9	2.5	3.3	1.7	1.0	1.2	82.2	4.2	13.6	0.081	0.518	21.247657	-104.903904
LAS VARAS	71.30	1	0	8511	87.0	5.1	3.5	1.7	1.1	0.9	0.6	0.1	87.0	5.1	7.9	0.096	0.510	21.188136	-105.121969
LAS VARAS	71.30	3	0	8584	87.0	5.0	3.6	1.7	1.1	0.9	0.6	0.1	87.0	5.0	8.0	0.103	0.502	21.171198	-105.149915
T. DER. RINCON DE GUAYABITOS	94.50	1	1	5277	86.9	5.2	3.6	1.6	1.1	0.9	0.6	0.1	86.9	5.2	7.9	0.072	0.502	21.027432	-105.260585
T. DER. RINCON DE GUAYABITOS	94.50	1	2	5312	86.7	5.3	3.5	1.8	1.1	0.9	0.6	0.1	86.7	5.3	8.0	0.075	0.502	21.027432	-105.260585

NAYARIT

19 CARR:TEPIC - PUERTO VALLARTA

CLAVE: 00068

RUTA: MEX-200

AÑO: 2010

LUGAR	ESTACION				CLASIFICACION VEHICULAR EN PORCIENTO								COORDENADAS						
	KM	TE	SC	TDPA	A	B	C2	C3	T3S2	T3S3	T3S2R4	OTROS	A	B	C	K'	D	LATITUD	LONGITUD
T. DER. RINCON DE GUAYABITOS	94.50	3	0	9764	86.9	5.1	3.5	1.8	1.1	0.9	0.6	0.1	86.9	5.1	8.0	0.084	0.506	21.009809	-105.271677
T. DER. SAYULITA	122.91	1	0	8191	86.9	5.1	3.7	1.7	1.1	0.8	0.6	0.1	86.9	5.1	8.0	0.090	0.506	20.866115	-105.426307
T. DER. SAYULITA	122.91	3	0	7732	86.6	5.5	3.5	1.7	1.1	0.9	0.6	0.1	86.6	5.5	7.9	0.097	0.505	20.859907	-105.424649
T. DER. CRUZ DE JUANACAXTLE	137.30	3	1	5037	87.0	5.3	3.4	1.6	1.1	0.9	0.6	0.1	87.0	5.3	7.7	0.111	0.504	20.763956	-105.363275
T. DER. CRUZ DE JUANACAXTLE	137.30	3	2	5116	86.9	5.2	3.4	1.8	1.1	0.9	0.6	0.1	86.9	5.2	7.9	0.121	0.504	20.763956	-105.363275
BUCERIAS	140.81	1	1	7669	83.0	5.5	4.7	2.9	1.6	1.1	0.9	0.3	83.0	5.5	11.5	0.092	0.504	20.762102	-105.348910
BUCERIAS	140.81	1	2	7790	83.5	5.3	4.5	2.8	1.6	1.1	0.9	0.3	83.5	5.3	11.2	0.096	0.504	20.762102	-105.348910
LIM. EDOS. TERM. NAY. PPIA. JAL.	152.60																		
T. DER. AEROPUERTO DIAZ ORDAZ	158.37	1	1	13873	82.7	5.5	4.9	2.9	1.6	1.1	1.0	0.3	82.7	5.5	11.8	0.113	0.501	20.679447	-105.245747
T. DER. AEROPUERTO DIAZ ORDAZ	158.37	1	2	13803	84.0	5.0	4.3	2.8	1.6	1.1	0.9	0.3	84.0	5.0	11.0	0.125	0.501	20.679447	-105.245747
T. DER. AEROPUERTO DIAZ ORDAZ	158.37	3	1	10673	82.7	5.8	4.7	2.9	1.6	1.1	0.9	0.3	82.7	5.8	11.5	0.093	0.510	20.670451	-105.249321
T. DER. AEROPUERTO DIAZ ORDAZ	158.37	3	2	11124	83.5	5.4	4.4	2.7	1.7	1.1	0.9	0.3	83.5	5.4	11.1	0.099	0.510	20.670451	-105.249321
PUERTO VALLARTA	166.88																		

20 CARR:CHAPALILLA - COMPOSTELA (CUOTA)

CLAVE: 18004

RUTA: MEX-D

AÑO: 2010

LUGAR	ESTACION				CLASIFICACION VEHICULAR EN PORCIENTO								COORDENADAS						
	KM	TE	SC	TDPA	A	B	C2	C3	T3S2	T3S3	T3S2R4	OTROS	A	B	C	K'	D	LATITUD	LONGITUD
T. C. GUADALAJARA - TEPIC	0.00	3	0	5139	79.1	8.3	4.0	3.3	2.9	0.9	0.2	1.3	79.1	8.3	12.6	0.089	0.512	21.189870	-104.643597
CASETA DE COBRO COMPOSTELA	31.50	2	0	4223	79.7	7.9	4.1	3.1	2.9	0.9	0.2	1.2	79.7	7.9	12.4			21.229440	-104.887437
T. DER. COMPOSTELA	36.50	1	0	4669	80.9	7.4	3.9	2.9	2.7	0.8	0.2	1.2	80.9	7.4	11.7	0.078	0.502	21.228722	-104.895542
T. C. TEPIC - PUERTO VALLARTA	38.00	1	0	5662	79.5	7.8	4.2	3.2	3.0	0.9	0.2	1.2	79.5	7.8	12.7	0.101	0.507	21.231177	-104.919451

21 CARR:GUADALAJARA - TEPIC (CUOTA)

CLAVE: 00033

RUTA: MEX-015D

AÑO: 2010

LUGAR	ESTACION				CLASIFICACION VEHICULAR EN PORCIENTO								COORDENADAS						
	KM	TE	SC	TDPA	A	B	C2	C3	T3S2	T3S3	T3S2R4	OTROS	A	B	C	K'	D	LATITUD	LONGITUD
T. C. GUADALAJARA - TEPIC (LIBRE)	0.00																		
CASETA DE COBRO ARENAL	10.96	2	0	9227	69.4	11.6	2.6	2.6	8.3	1.4	3.5	0.6	69.4	11.6	19.0			20.778732	-103.662440
CASETA DE COBRO TEQUILA	33.84	3	0	9472	69.9	11.4	2.6	2.6	8.1	1.4	3.4	0.6	69.9	11.4	18.7			20.854415	-103.860906
CASETA DE COBRO PLAN DE BARRANCAS	69.337	2	0	9808	65.3	8.7	4.2	5.2	10.8	1.9	3.3	0.6	65.3	8.7	26.0			21.005394	-104.144086
LIM. EDOS. TERM. JAL. PPIA. NAY.	84.60																		
CASETA DE COBRO TEQUEPEXPAN	130.364	1	0	8855	70.2	11.3	2.6	2.7	8.1	1.1	3.5	0.5	70.2	11.3	18.5			21.213687	-104.592553
CASETA DE COBRO SANTA MA. DEL ORO	145.32	1	0	6149	63.2	12.2	2.9	3.6	11.2	1.5	4.7	0.7	63.2	12.2	24.6			21.328309	-104.664328
CASETA DE COBRO SANTA MA. DEL ORO	145.32	2	0	6663	65.4	11.4	3.0	3.4	10.4	1.4	4.4	0.6	65.4	11.4	23.2			21.328309	-104.664328

NAYARIT

21 CARR: GUADALAJARA - TEPIC (CUOTA)

CLAVE: 00033

RUTA: MEX-015D

AÑO: 2010

LUGAR	ESTACION				CLASIFICACION VEHICULAR EN PORCIENTO								COORDENADAS						
	KM	TE	SC	TDPA	A	B	C2	C3	T3S2	T3S3	T3S2R4	OTROS	A	B	C	K'	D	LATITUD	LONGITUD
CASETA DE COBRO "STA MA. DEL ORO"	145.32	3	1	3041	65.2	12.1	2.7	2.7	10.7	1.3	4.7	0.6	65.2	12.1	22.7	0.072	0.511	21.333508	-104.668227
CASETA DE COBRO "STA MA. DEL ORO"	145.32	3	2	3176	64.9	11.6	2.7	2.8	11.4	1.4	4.6	0.6	64.9	11.6	23.5	0.078	0.511	21.333508	-104.668227
T. C. GUADALAJARA - TEPIC (LIBRE)	168.62																		

22 CARR: TEPIC - MAZATLAN (CUOTA)

CLAVE:

RUTA: MEX-015D

AÑO: 2010

LUGAR	ESTACION				CLASIFICACION VEHICULAR EN PORCIENTO								COORDENADAS						
	KM	TE	SC	TDPA	A	B	C2	C3	T3S2	T3S3	T3S2R4	OTROS	A	B	C	K'	D	LATITUD	LONGITUD
TEPIC	0.00																		
CASETA DE COBRO "EL PICHON"	4.70	1	1	4502	72.4	7.9	4.0	3.5	7.7	1.0	3.1	0.4	72.4	7.9	19.7	0.071	0.506	21.549200	-104.952689
CASETA DE COBRO "EL PICHON"	4.70	1	2	4615	73.3	7.8	3.7	3.4	7.4	1.0	3.0	0.4	73.3	7.8	18.9	0.073	0.506	21.549200	-104.952689
T. C. TEPIC - MAZATLAN	21.00	1	1	4278	74.0	7.2	4.0	3.3	7.2	1.0	2.9	0.4	74.0	7.2	18.8	0.105	0.504	21.663613	-105.027581
T. C. TEPIC - MAZATLAN	21.00	1	2	4352	74.0	7.7	4.0	3.2	6.9	1.0	2.8	0.4	74.0	7.7	18.3	0.106	0.504	21.663613	-105.027581
CRUCERO DE SAN BLAS	24.50	3	0	3713	73.5	7.5	3.8	3.4	7.3	1.0	3.1	0.4	73.5	7.5	19.0	0.080	0.513	21.714189	-105.060432
ENT. SAN BLAS	25.00	1	1	1966	74.6	7.5	3.7	3.1	6.9	0.9	2.9	0.4	74.6	7.5	17.9	0.099	0.506	21.688805	-105.048016
ENT. SAN BLAS	25.00	1	2	2015	72.7	8.1	4.1	3.6	7.3	1.0	2.8	0.4	72.7	8.1	19.2	0.102	0.506	21.688721	-105.048267
CASETA DE COBRO ESTACION RUIZ	54.70	1	0	3462	57.9	8.2	3.8	5.4	14.4	2.3	7.1	0.9	57.9	8.2	33.9			21.951755	-105.115928
CASETA DE COBRO ESTACION RUIZ	54.70	3	0	4562	66.0	6.5	3.8	4.9	11.0	1.8	5.3	0.7	66.0	6.5	27.5			21.951755	-105.115928
EST. RUIZ	54.90	1	0	5093	65.9	6.2	3.8	4.7	11.4	1.8	5.5	0.7	65.9	6.2	27.9	0.072	0.501	21.947450	-105.112239
EST. RUIZ	54.90	3	0	4594	64.0	7.0	3.8	5.2	11.7	1.9	5.7	0.7	64.0	7.0	29.0	0.086	0.507	21.955615	-105.119185
CASETA DE COBRO ACAPONETA	73.40	1	0	2851	58.3	10.8	3.5	4.5	12.1	2.1	7.8	0.9	58.3	10.8	30.9			22.454352	-105.419106
CASETA DE COBRO ACAPONETA	73.40	2	0	3220	59.8	10.7	3.6	4.6	11.2	2.1	7.2	0.8	59.8	10.7	29.5			22.454352	-105.419106
CASETA DE COBRO ACAPONETA	73.40	3	0	2954	58.3	10.9	3.7	4.5	12.0	2.1	7.6	0.9	58.3	10.9	30.8			22.454352	-105.419106
ROSAMORADA	73.50	1	0	4330	57.6	11.1	3.9	4.7	11.6	2.2	8.0	0.9	57.6	11.1	31.3	0.071	0.509	22.084607	-105.210895
ROSAMORADA	73.50	3	0	4071	59.7	10.5	3.8	4.6	11.4	2.0	7.1	0.9	59.7	10.5	29.8	0.083	0.505	22.091857	-105.220105
ACAPONETA	120.20	1	0	3880	57.1	11.4	3.9	4.5	12.2	2.1	7.9	0.9	57.1	11.4	31.5	0.069	0.523	22.448114	-105.418865
ACAPONETA	120.20	3	0	3669	57.2	11.3	3.6	4.4	12.6	2.1	7.9	0.9	57.2	11.3	31.5	0.074	0.515	22.457164	-105.428945
LIM. EDOS. TERM. NAY. PPIA. SIN.	132.80																		
CASETA DE COBRO ROSARIO	199.486	1	0	3490	51.8	10.4	3.6	4.0	18.9	2.2	8.2	0.9	51.8	10.4	37.8			22.984689	-105.877932
CASETA DE COBRO ROSARIO	199.486	2	0	4127	55.5	11.4	3.6	3.6	16.2	1.9	7.0	0.8	55.5	11.4	33.1			22.984689	-105.877932
CASETA DE COBRO ROSARIO	199.486	3	0	4046	55.3	11.3	3.5	3.5	16.5	2.0	7.1	0.8	55.3	11.3	33.4			22.984689	-105.877932
ESCUINAPA DE HIDALGO	208.60	1	0	3607	56.2	11.2	3.4	3.6	15.5	2.0	7.3	0.8	56.2	11.2	32.6	0.070	0.524	22.851735	-105.747490
ESCUINAPA DE HIDALGO	208.60	3	0	3547	55.0	11.1	3.5	3.6	16.3	2.1	7.6	0.8	55.0	11.1	33.9	0.075	0.534	22.863270	-105.758695
ROSARIO	220.68	1	0	3540	54.6	11.8	3.6	3.7	16.2	2.1	7.2	0.8	54.6	11.8	33.6	0.076	0.520	22.975348	-105.866590
ROSARIO	220.68	3	0	4824	53.5	11.7	3.5	3.5	17.6	2.0	7.4	0.8	53.5	11.7	34.8	0.065	0.535	22.989225	-105.883415

NAYARIT

27 CARR: RAMAL A EL COLOMO

CLAVE: 18014

RUTA: NAY

AÑO: 2010

LUGAR	ESTACION				CLASIFICACION VEHICULAR EN PORCIENTO								COORDENADAS						
	KM	TE	SC	TDPA	A	B	C2	C3	T3S2	T3S3	T3S2R4	OTROS	A	B	C	K'	D	LATITUD	LONGITUD
T. C. TEPIC - PUERTO VALLARTA	0.00																		
SAN VICENTE	3.00	1	0	4365	85.5	3.1	6.3	2.1	0.9	0.5	0.0	1.6	85.5	3.1	11.4	0.080	0.517	20.736041	-105.273421
EL COLOMO	21.00																		

28 CARR: RAMAL A ESTACION YAGO

CLAVE: 18224

RUTA: NAY

AÑO: 2010

LUGAR	ESTACION				CLASIFICACION VEHICULAR EN PORCIENTO								COORDENADAS						
	KM	TE	SC	TDPA	A	B	C2	C3	T3S2	T3S3	T3S2R4	OTROS	A	B	C	K'	D	LATITUD	LONGITUD
T. C. TEPIC - MAZATLAN	0.00	3	0	1757	87.3	3.1	5.1	1.2	1.9	0.9	0.0	0.5	87.3	3.1	9.6	0.115	0.523	21.834398	-105.111314
ESTACION YAGO	7.00																		

29 CARR: RAMAL A IXTAPAN DE LA CONCEPCION

CLAVE: 18233

RUTA: NAY

AÑO: 2010

LUGAR	ESTACION				CLASIFICACION VEHICULAR EN PORCIENTO								COORDENADAS						
	KM	TE	SC	TDPA	A	B	C2	C3	T3S2	T3S3	T3S2R4	OTROS	A	B	C	K'	D	LATITUD	LONGITUD
T. C. TEPIC - PUERTO VALLARTA (LAS VARAS)	0.00	3	0	5322	88.4	3.9	3.1	1.1	1.4	1.0	0.2	0.9	88.4	3.9	7.7	0.084	0.509	21.186014	-105.143044
IXTAPAN DE LA CONCEPCION	20.00	1	0	1806	88.4	3.6	3.3	1.2	1.4	1.0	0.2	0.9	88.4	3.6	8.0	0.122	0.526	21.301894	-105.157265

30 CARR: RAMAL A MILPAS VIEJAS

CLAVE: 18007

RUTA: NAY

AÑO: 2010

LUGAR	ESTACION				CLASIFICACION VEHICULAR EN PORCIENTO								COORDENADAS						
	KM	TE	SC	TDPA	A	B	C2	C3	T3S2	T3S3	T3S2R4	OTROS	A	B	C	K'	D	LATITUD	LONGITUD
T. CARR. TEPIC - MAZATLAN	0.00	3	0	2287	93.2	2.8	2.1	1.0	0.6	0.2	0.0	0.1	93.2	2.8	4.0	0.090	0.536	22.449215	-105.360885
MILPAS VIEJAS	17.00																		

31 CARR: RAMAL A VILLA HIDALGO NAY

CLAVE: 18031

RUTA: NAY

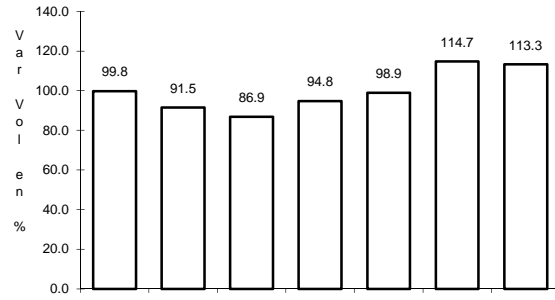
AÑO: 2010

LUGAR	ESTACION				CLASIFICACION VEHICULAR EN PORCIENTO								COORDENADAS						
	KM	TE	SC	TDPA	A	B	C2	C3	T3S2	T3S3	T3S2R4	OTROS	A	B	C	K'	D	LATITUD	LONGITUD
T. C. TEPIC - MAZATLAN	0.00	3	0	2227	89.6	2.5	3.3	1.3	1.8	0.4	0.0	1.1	89.6	2.5	7.9	0.088	0.505	21.807824	-105.103940
VILLA HIDALGO	16.00	1	0	4844	90.8	2.4	3.4	1.6	0.7	0.3	0.0	0.8	90.8	2.4	6.8	0.079	0.510	21.752813	-105.228405

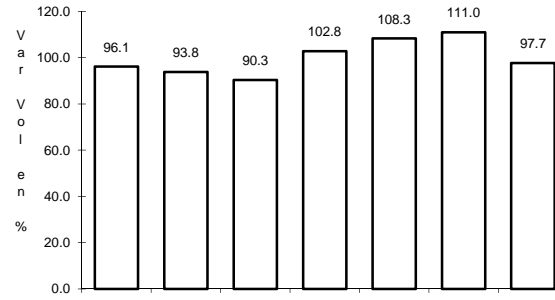
1 CARR: CRUCERO DE SAN BLAS - SAN BLAS

CLAVE: 18229

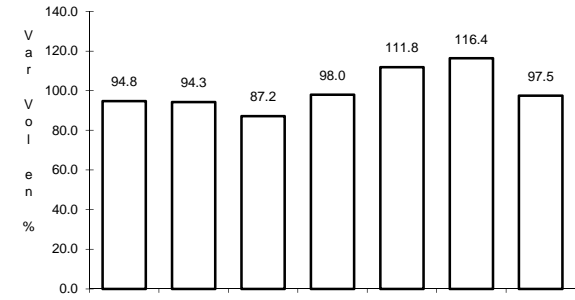
ruta: MEX-074



Km: 0.00 Tipo: 3 Sent: 0



Km: 11.00 Tipo: 3 Sent: 0

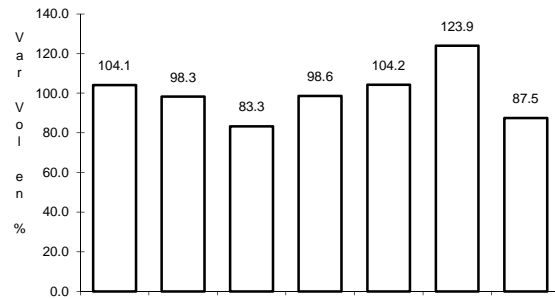


Km: 36.00 Tipo: 1 Sent: 0

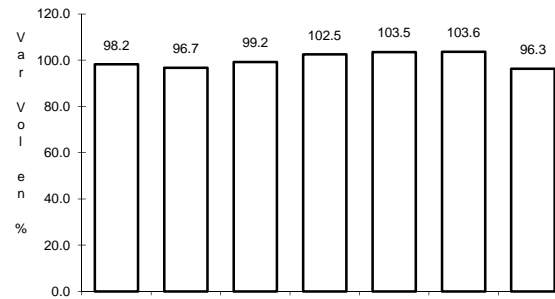
2 CARR: ENT. ACAPONETA - EL NOVILLERO

CLAVE: 18023

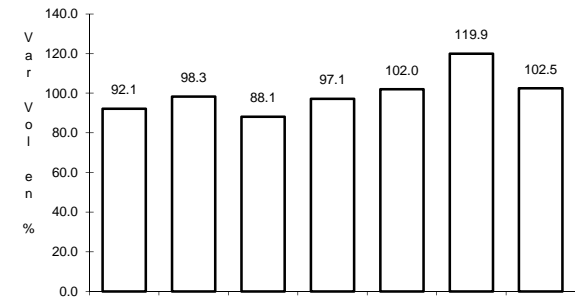
ruta: MEX-068



Km: 0.00 Tipo: 3 Sent: 0



Km: 13.00 Tipo: 1 Sent: 0

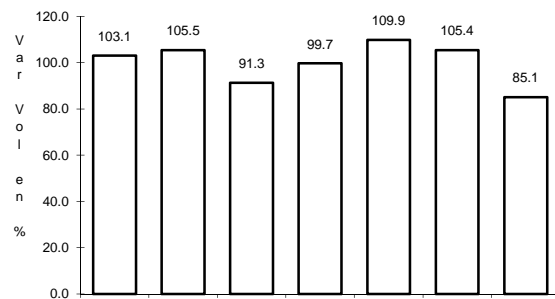


Km: 36.00 Tipo: 1 Sent: 0

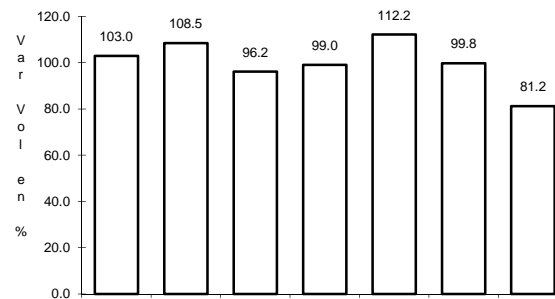
3 CARR: ENT. SANTIAGO IXCUINTLA - PLAYA LOS CORCHOS

CLAVE: 18016

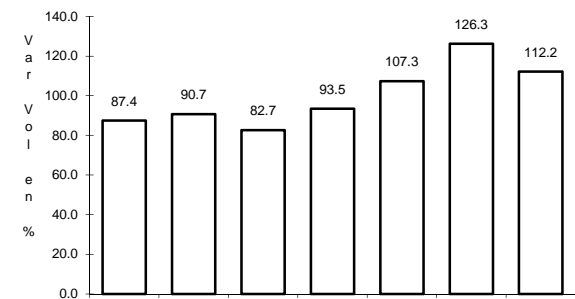
ruta: MEX-072



Km: 0.00 Tipo: 3 Sent: 0



Km: 17.00 Tipo: 1 Sent: 0

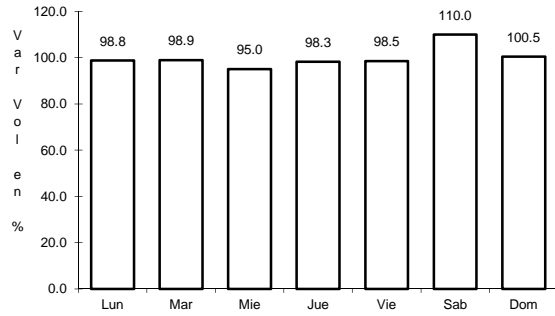


Km: 39.00 Tipo: 1 Sent: 0

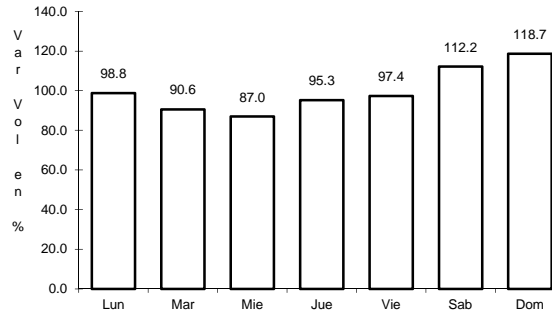
16 CARR: TEPIC - IXTAPAN DE LA CONCEPCION

CLAVE: 18028

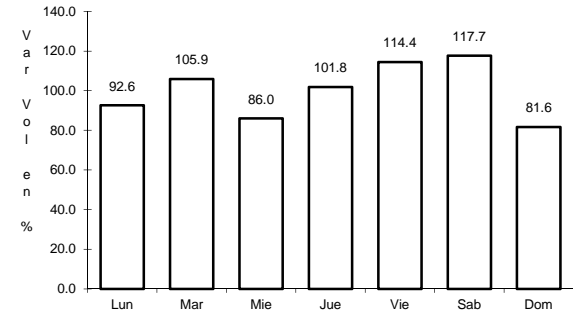
RUTA: MEX-076



Km: 0.00 Tipo: 3 Sent: 0



Km: 50.00 Tipo: 3 Sent: 0

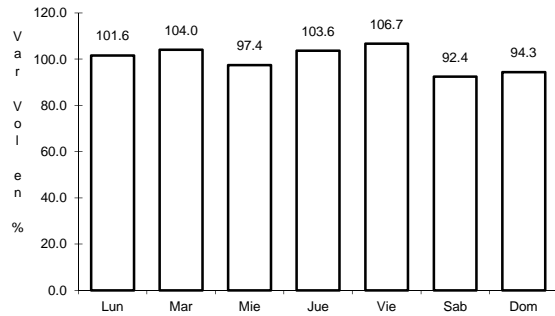


Km: 77.42 Tipo: 1 Sent: 0

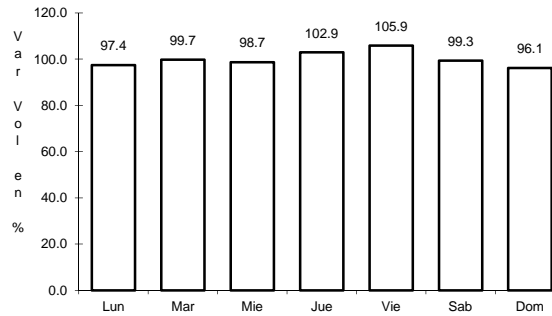
17 CARR: TEPIC - MAZATLAN

CLAVE: 00500

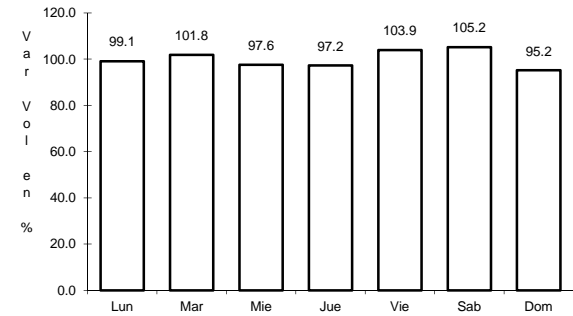
RUTA: MEX-015



Km: 0.00 Tipo: 3 Sent: 1



Km: 0.00 Tipo: 3 Sent: 2

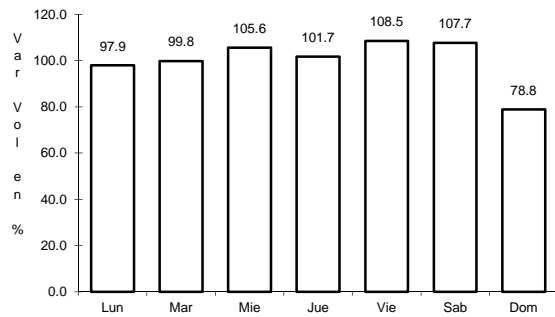


Km: 269.52 Tipo: 3 Sent: 0

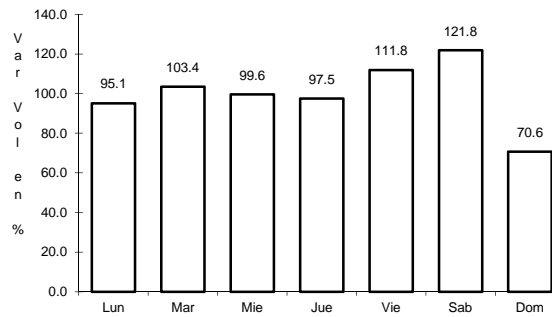
18 CARR: TEPIC - PRESA AGUAMILPAS

CLAVE: 18029

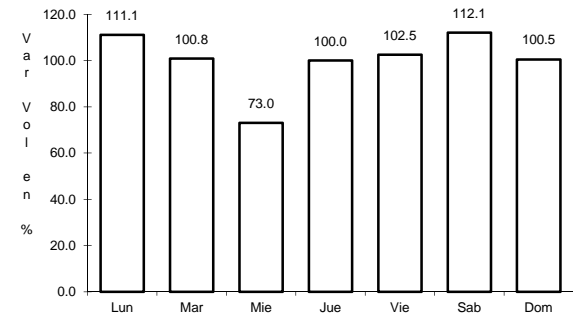
RUTA: MEX



Km: 0.00 Tipo: 3 Sent: 0



Km: 17.50 Tipo: 3 Sent: 0

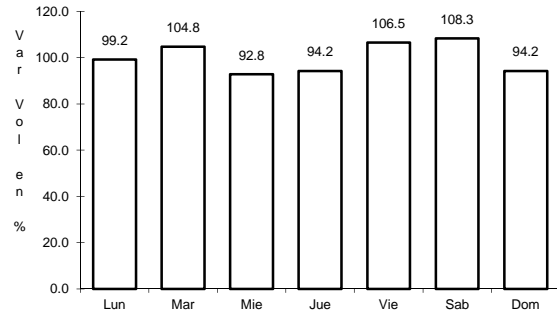


Km: 54.00 Tipo: 1 Sent: 0

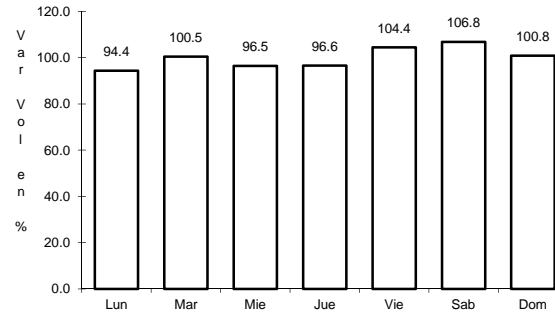
22 CARR: TEPIC - MAZATLAN (CUOTA)

CLAVE:

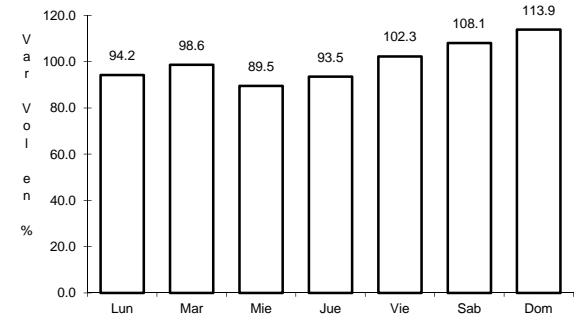
RUTA: MEX-015D



Km: 4.70 Tipo: 1 Sent: 1



Km: 4.70 Tipo: 1 Sent: 2

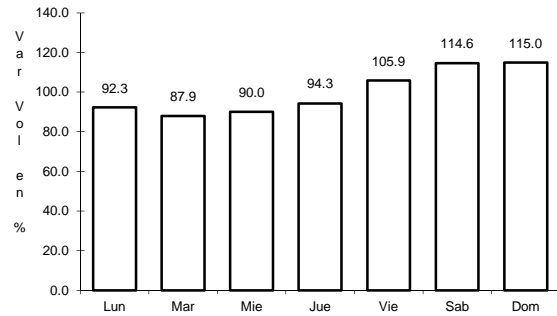


Km: 240.90 Tipo: 1 Sent: 0

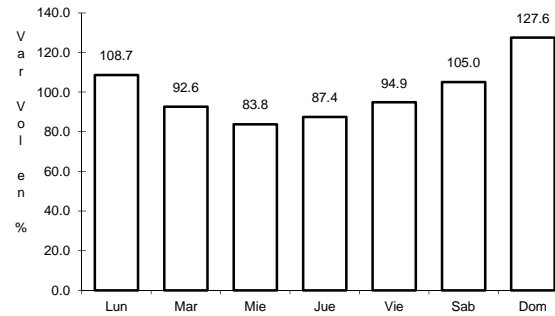
23 CARR: EL CARRIZO - LA BATANGA

CLAVE: 18107

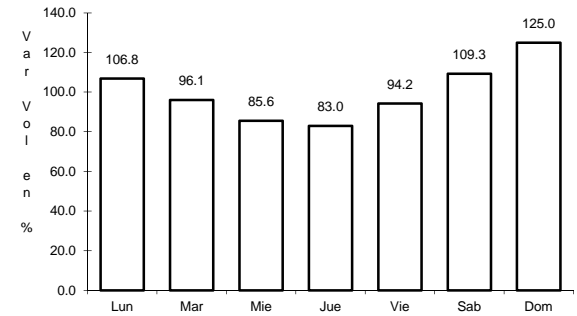
RUTA: NAY-078



Km: 0.00 Tipo: 3 Sent: 0



Km: 9.00 Tipo: 1 Sent: 0

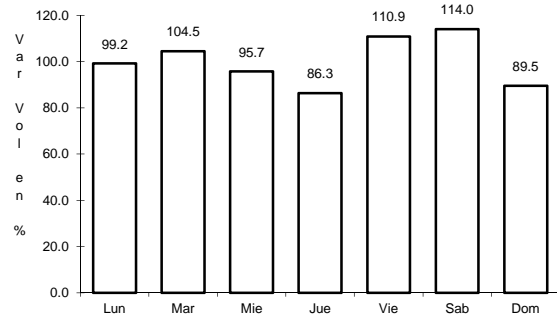


Km: 25.00 Tipo: 1 Sent: 0

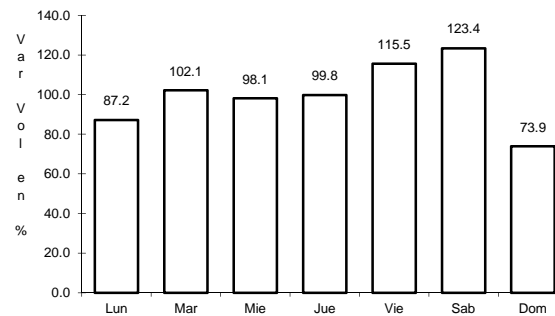
24 CARR: NAVARRETE - SAUTA

CLAVE: 18013

RUTA: NAY-013



Km: 0.00 Tipo: 3 Sent: 0

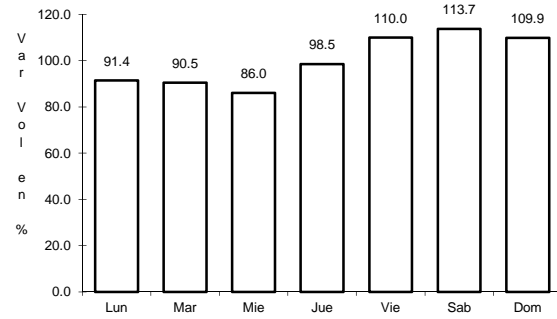


Km: 7.00 Tipo: 1 Sent: 0

25 CARR: RAMAL A AMADO NERVO

CLAVE: 18011

RUTA: NAY



Km: 0.00

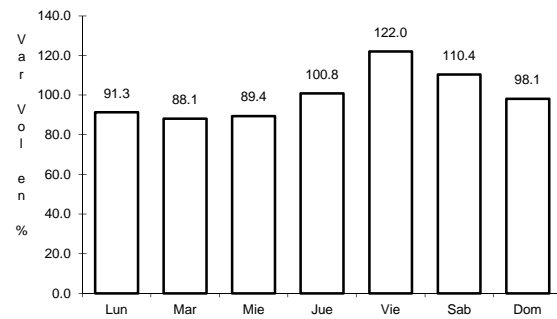
Tipo: 3

Sent: 0

26 CARR: RAMAL A BELLAVISTA

CLAVE: 18059

RUTA: NAY-059



Km: 0.00

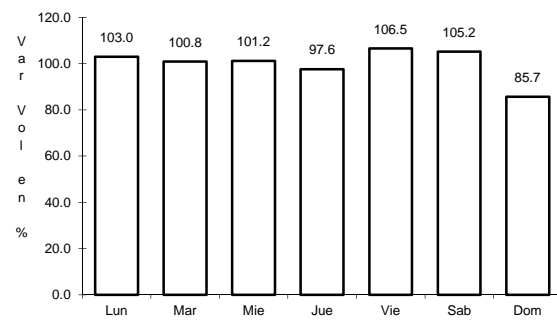
Tipo: 3

Sent: 0

27 CARR: RAMAL A EL COLOMO

CLAVE: 18014

RUTA: NAY



Km: 3.00

Tipo: 1

Sent: 0

