

TAMAULIPAS

**---RED FEDERAL LIBRE---**

1	ANTIGUO MORELOS - ENT. EL HUIZACHE	MEX-080
2	CD. VALLES - CD. VICTORIA	MEX-085
3	CD. VALLES - TAMPICO	MEX-070
4	CD. VICTORIA - MATAMOROS	MEX-101-180
5	CD. VICTORIA - SOTO LA MARINA	MEX
6	CIUDAD VICTORIA - MONTERREY	MEX-085
7	ENT. TULA - CD. VICTORIA	MEX-101
8	ESTACION MANUEL - T. C. (CD. VICTORIA - SOTO LA MARINA)	MEX-180
9	GONZALEZ - LLERA DE CANALES	MEX-247
10	IGNACIO ZARAGOZA - T. C. (CIUDAD VICTORIA - MONTERREY)	MEX
11	LAS URRACAS - T. C. (MATAMOROS - REYNOSA)	MEX-097
12	LIBRAMIENTO DE REYNOSA	MEX
13	MATAMOROS - PLAYA LAURO VILLAR	MEX-002
14	MATAMOROS - REYNOSA	MEX-002
15	MONTERREY - MIER	MEX-054
16	MONTERREY - NUEVO LAREDO (LIBRE)	MEX-085
17	MONTERREY - REYNOSA (LIBRE)	MEX-040
18	PARAS - NUEVA CIUDAD GUERRERO	MEX-030
19	PIEDRAS NEGRAS - NUEVO LAREDO	MEX-002
20	REYNOSA - NUEVO LAREDO	MEX-002
21	SOTO LA MARINA - LA COMA	MEX-180
22	TAMPICO - CD. MANTE	MEX-080
23	TUXPAM - TAMPICO	MEX-180

**---RED FEDERAL DE CUOTA---**

24	LIBRAMIENTO PONIENTE DE TAMPICO (CUOTA)	MEX-184D
25	MATAMOROS - REYNOSA (CUOTA)	MEX-002D

**---RED ESTATAL LIBRE---**

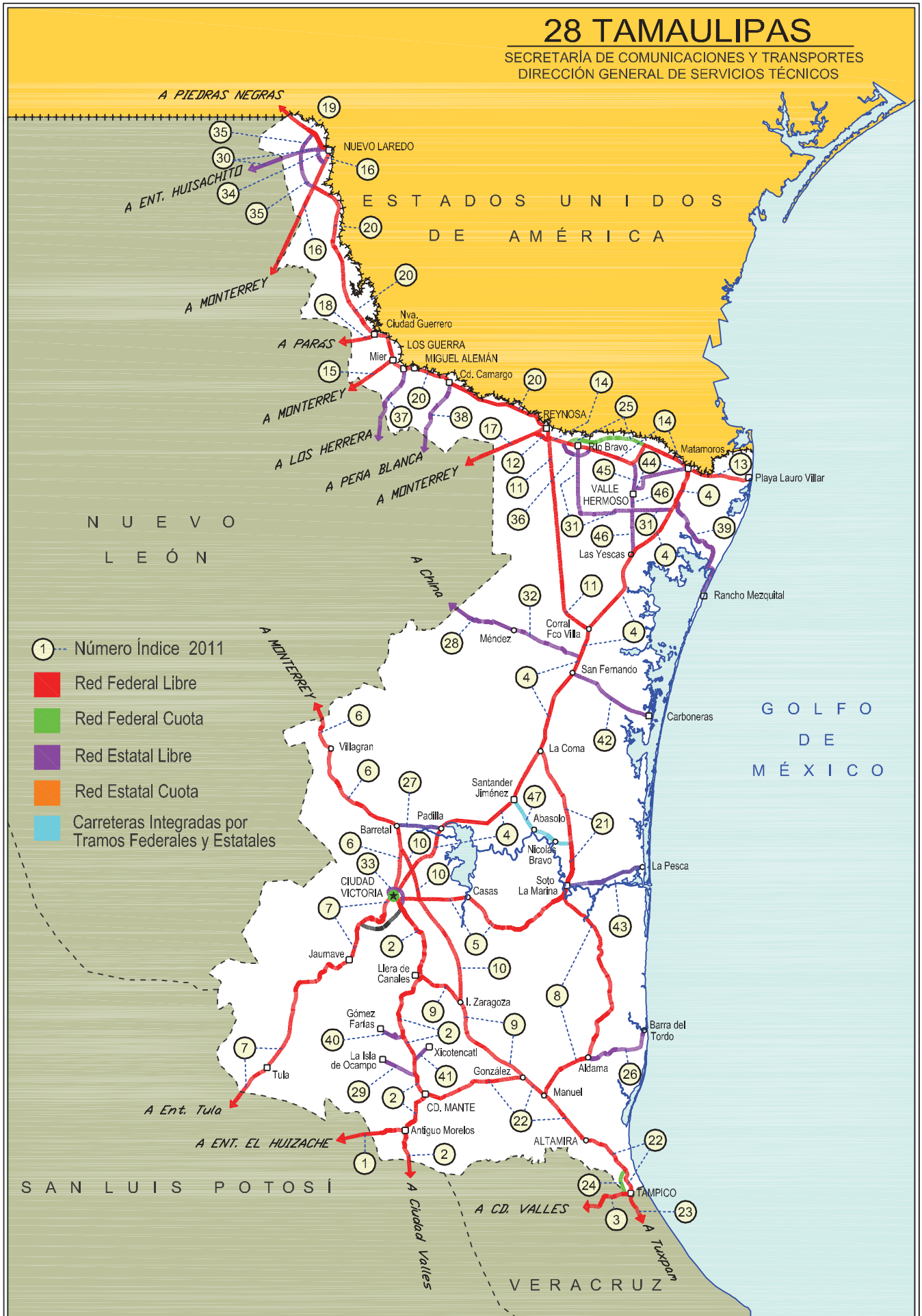
26	ALDAMA - BARRA EL TORDO	TAM
27	BARRETAL - NUEVA VILLA DE PADILLA	TAM-001
28	CHINA - MENDEZ	NL-TAM
29	EL LIMON - OCAMPO	TAM-019
30	ENT. HUISACHITO - NUEVO LAREDO	NL-001-TAM
31	ENT. LAS BLANCAS - RIO BRAVO	TAM-003
32	LA JOYA - MENDEZ	TAM
33	LIBRAMIENTO DE CD. VICTORIA	TAM
34	LIBRAMIENTO DE NUEVO LAREDO	TAM
35	LIBRAMIENTO DE NUEVO LAREDO II	TAM
36	LIBRAMIENTO DE RIO BRAVO	TAM
37	LOS GUERRA - LOS HERRERAS	TAM-NL
38	PEÑA BLANCA - CD. CAMARGO	NL-TAM
39	POTRERO NUEVO - RANCHO EL MEZQUITAL	TAM
40	RAMAL A GOMEZ FARIAS	TAM-020
41	RAMAL A XICOTENCATL	TAM
42	SAN FERNANDO - CARBONERAS	TAM
43	SOTO LA MARINA - LA PESCA	TAM-070
44	T. C. (VALLE HERMOSO - EMPALME) - MATAMOROS	TAM-005
45	VALLE HERMOSO - EMPALME	TAM-004
46	VALLE HERMOSO - LAS YESCAS	TAM

**---CARRETERAS INTEGRADAS POR TRAMOS FEDERALES Y ESTATALES---**

47	SANTANDER JIMENEZ - ENT. EL OJITO	MEX-107-TAM
----	-----------------------------------	-------------

# 28 TAMAULIPAS

SECRETARÍA DE COMUNICACIONES Y TRANSPORTES  
DIRECCIÓN GENERAL DE SERVICIOS TÉCNICOS



TAMAULIPAS

1 CARR: ANTIGUO MORELOS - ENT. EL HUIZACHE

CLAVE: 00136

RUTA: MEX-080

AÑO: 2010

LUGAR	ESTACION				CLASIFICACION VEHICULAR EN PORCIENTO								COORDENADAS						
	KM	TE	SC	TDPA	A	B	C2	C3	T3S2	T3S3	T3S2R4	OTROS	A	B	C	K'	D	LATITUD	LONGITUD
ANTIGUO MORELOS	0.00	3	0	2437	75.9	10.3	7.3	0.9	2.6	0.8	1.9	0.3	75.9	10.3	13.8	0.066	0.507	22.553880	-99.090630
NUEVO MORELOS	19.28	1	0	1231	77.9	9.8	5.7	0.8	3.2	0.8	1.5	0.3	77.9	9.8	12.3	0.073	0.505	22.540894	-99.212247
LIM. EDOS. TERM. TAMPS. PPIA. S.L.P.	25.00																		
EL NARANJO	32.00	1	0	3834	75.4	12.1	5.7	0.6	2.9	1.3	1.2	0.8	75.4	12.1	12.5	0.070	0.504	22.529724	-99.312397
EL NARANJO	32.00	3	0	1872	71.9	12.0	8.1	1.4	3.6	0.9	1.3	0.8	71.9	12.0	16.1	0.071	0.599	22.518076	-99.335735
CD. DEL MAIZ	86.00	3	0	2244	75.8	11.1	6.6	0.8	2.5	1.0	1.4	0.8	75.8	11.1	13.1	0.068	0.501	22.408127	-99.615569
T. DER. TULA	141.21	3	0	3709	73.3	11.7	7.6	1.2	3.3	0.6	1.5	0.8	73.3	11.7	15.0	0.076	0.503	22.741124	-99.983941
T. C. SAN LUIS POTOSI - MATEHUALA (ENT. EL HUIZACHE)	198.83	1	0	3553	75.6	9.3	8.0	0.7	3.2	1.0	1.4	0.8	75.6	9.3	15.1	0.084	0.515	22.929971	-100.450322

2 CARR: CD. VALLES - CD. VICTORIA

CLAVE: 00509

RUTA: MEX-085

AÑO: 2010

LUGAR	ESTACION				CLASIFICACION VEHICULAR EN PORCIENTO								COORDENADAS						
	KM	TE	SC	TDPA	A	B	C2	C3	T3S2	T3S3	T3S2R4	OTROS	A	B	C	K'	D	LATITUD	LONGITUD
CD. VALLES	0.00	3	0	5954	81.3	7.2	4.0	3.0	1.9	1.4	1.2	0.0	81.3	7.2	11.5	0.082	0.506	22.015577	-98.997953
LIM. EDOS. TERM. S.L.P. PPIA. TAMPS.	50.40																		
ANTIGUO MORELOS	66.90	1	0	2850	82.0	7.0	3.8	2.9	1.8	1.4	1.1	0.0	82.0	7.0	11.0	0.066	0.502	22.550345	-99.078411
ANTIGUO MORELOS	66.90	3	0	3429	81.5	7.0	3.9	3.2	1.8	1.4	1.2	0.0	81.5	7.0	11.5	0.077	0.501	22.558301	-99.078176
CD. MANTE	98.00	1	0	6319	81.0	7.0	4.1	3.3	1.9	1.4	1.3	0.0	81.0	7.0	12.0	0.094	0.516	22.706106	-98.999453
T. IZQ. OCAMPO	110.00	3	0	3415	81.8	7.0	3.7	3.1	1.8	1.4	1.2	0.0	81.8	7.0	11.2	0.058	0.533	22.844334	-99.026502
T. IZQ. GOMEZ FARIAS	132.84	3	0	1798	82.5	6.4	3.7	3.1	1.9	1.3	1.1	0.0	82.5	6.4	11.1	0.063	0.516	23.025865	-99.093662
T. IZQ. LLERA DE CANALES	170.00	3	0	5154	81.5	6.8	3.9	3.2	1.9	1.4	1.3	0.0	81.5	6.8	11.7	0.071	0.502	23.314781	-99.000004
T. DER. GONZALEZ	172.50	3	0	2196	81.7	6.6	4.0	3.2	1.9	1.4	1.2	0.0	81.7	6.6	11.7	0.060	0.514	23.322730	-98.998141
CD. VICTORIA	232.00	1	0	3378	81.6	6.8	3.8	3.2	1.9	1.4	1.3	0.0	81.6	6.8	11.6	0.065	0.503	23.659653	-99.096447

3 CARR: CD. VALLES - TAMPICO

CLAVE: 00138

RUTA: MEX-070

AÑO: 2010

LUGAR	ESTACION				CLASIFICACION VEHICULAR EN PORCIENTO								COORDENADAS						
	KM	TE	SC	TDPA	A	B	C2	C3	T3S2	T3S3	T3S2R4	OTROS	A	B	C	K'	D	LATITUD	LONGITUD
CD. VALLES	0.00	3	0	8254	77.0	5.0	4.9	6.5	3.2	2.1	1.0	0.3	77.0	5.0	18.0	0.085	0.503	21.976010	-98.959224
T. DER. SANTA ELENA	15.25	3	0	7275	77.2	5.2	4.7	6.5	3.1	2.1	0.9	0.3	77.2	5.2	17.6	0.066	0.501	21.961420	-98.877242
TAMUIN	29.60	1	0	5627	81.5	3.8	4.1	4.1	2.4	2.1	1.6	0.4	81.5	3.8	14.7	0.078	0.506	21.995327	-98.780067
EBANO	79.00	1	0	9609	76.1	5.8	5.3	2.9	4.7	2.8	2.2	0.2	76.1	5.8	18.1	0.075	0.506	22.204314	-98.405376
EBANO	79.00	3	0	5419	75.9	6.0	5.1	2.9	4.8	2.8	2.3	0.2	75.9	6.0	18.1	0.063	0.510	22.211433	-98.359856
LIM. EDOS. TERM. S.L.P. PPIA. VER.	83.57																		
T. DER. PANUCO	103.00	1	0	4927	76.7	5.9	4.8	2.8	4.4	2.9	2.3	0.2	76.7	5.9	17.4	0.068	0.524	22.155961	-98.154669

TAMAULIPAS

3 CARR: CD. VALLES - TAMPICO

CLAVE: 00138

RUTA: MEX-070

AÑO: 2010

LUGAR	ESTACION				CLASIFICACION VEHICULAR EN PORCIENTO								COORDENADAS						
	KM	TE	SC	TDPA	A	B	C2	C3	T3S2	T3S3	T3S2R4	OTROS	A	B	C	K'	D	LATITUD	LONGITUD
T. DER. PANUCO	103.00	3	0	6163	76.6	5.8	4.9	3.0	4.5	2.7	2.3	0.2	76.6	5.8	17.6	0.075	0.508	22.159426	-98.148012
T. C. ANAHUAC - EL PRIETO	128.40	1	0	7199	82.7	5.2	2.8	2.1	3.3	1.5	2.1	0.3	82.7	5.2	12.1	0.071	0.512	22.213459	-97.953828
T. C. ANAHUAC - EL PRIETO	128.40	3	1	6308	83.3	5.0	2.8	1.9	3.2	1.4	2.1	0.3	83.3	5.0	11.7	0.067	0.504	22.216457	-97.941442
T. C. ANAHUAC - EL PRIETO	128.40	3	2	6413	82.5	5.1	2.9	2.1	3.4	1.5	2.2	0.3	82.5	5.1	12.4	0.067	0.504	22.216457	-97.941442
LIM. EDOS. TERM. VER. PPIA. TAMPIS.	133.81																		
TAMPICO	138.00	1	0	15214	83.6	4.6	2.7	2.0	3.4	1.3	2.1	0.3	83.6	4.6	11.8	0.056	0.509	22.226269	-97.873854

4 CARR: CD. VICTORIA - MATAMOROS

CLAVE: 28139

RUTA: MEX-101-180

AÑO: 2010

LUGAR	ESTACION				CLASIFICACION VEHICULAR EN PORCIENTO								COORDENADAS						
	KM	TE	SC	TDPA	A	B	C2	C3	T3S2	T3S3	T3S2R4	OTROS	A	B	C	K'	D	LATITUD	LONGITUD
CD. VICTORIA	0.00																		
X. C. LIBRAMIENTO DE CD. VICTORIA	5.00	3	1	5527	77.8	5.9	2.2	0.9	6.2	2.6	3.8	0.6	77.8	5.9	16.3	0.079	0.503	23.776930	-99.105579
X. C. LIBRAMIENTO DE CD. VICTORIA	5.00	3	2	5598	77.7	5.8	2.3	0.9	6.2	2.7	3.8	0.6	77.7	5.8	16.5	0.081	0.503	23.776901	-99.105587
T. IZO. BARRETAL	46.50	1	0	6774	78.1	3.3	3.3	2.3	7.4	2.2	3.1	0.3	78.1	3.3	18.6	0.057	0.509	24.037384	-98.904972
T. DER. LAS JUNTAS	80.05	1	0	5473	77.9	3.6	3.5	2.2	7.1	2.4	3.0	0.3	77.9	3.6	18.5	0.085	0.510	24.116228	-98.597026
SANTANDER JIMENEZ	97.00	3	0	6623	78.3	3.2	3.4	2.1	7.3	2.3	3.1	0.3	78.3	3.2	18.5	0.065	0.520	24.237823	-98.476505
T. DER. SOTO LA MARINA	129.00	3	0	5653	77.0	3.5	3.6	2.3	7.9	2.3	3.1	0.3	77.0	3.5	19.5	0.067	0.513	24.475315	-98.339850
SAN FERNANDO	175.00	3	0	7642	76.7	3.7	3.7	2.4	7.5	2.4	3.3	0.3	76.7	3.7	19.6	0.069	0.513	24.863296	-98.139728
T. IZO. REYNOSA	202.00	1	0	8850	78.4	3.5	3.6	2.2	6.9	2.2	2.9	0.3	78.4	3.5	18.1	0.070	0.503	25.054731	-98.070713
SANTA TERESA	233.00	1	0	4819	77.2	3.7	3.6	2.5	7.4	2.3	3.0	0.3	77.2	3.7	19.1	0.068	0.518	25.273750	-97.863193
T. IZO. VALLE HERMOSO	254.50	1	0	5326	78.0	3.4	3.5	2.1	7.3	2.3	3.1	0.3	78.0	3.4	18.6	0.066	0.502	25.444012	-97.820098
T. IZO. JARITA	286.00	3	0	5181	77.6	3.4	3.5	2.2	7.5	2.4	3.1	0.3	77.6	3.4	19.0	0.100	0.505	25.669642	-97.599089
MATAMOROS	312.00	1	1	7755	78.4	3.3	3.3	2.2	7.4	2.1	3.0	0.3	78.4	3.3	18.3	0.069	0.503	25.780426	-97.533532
MATAMOROS	312.00	1	2	7837	78.0	3.3	3.3	2.3	7.5	2.2	3.1	0.3	78.0	3.3	18.7	0.074	0.503	25.780438	-97.533535

5 CARR: CD. VICTORIA - SOTO LA MARINA

CLAVE: 28009

RUTA: MEX

AÑO: 2010

LUGAR	ESTACION				CLASIFICACION VEHICULAR EN PORCIENTO								COORDENADAS						
	KM	TE	SC	TDPA	A	B	C2	C3	T3S2	T3S3	T3S2R4	OTROS	A	B	C	K'	D	LATITUD	LONGITUD
CD. VICTORIA	0.00	3	1	11331	89.4	3.6	0.2	0.2	2.9	1.4	1.9	0.4	89.4	3.6	7.0	0.071	0.502	23.718953	-99.087727
CD. VICTORIA	0.00	3	2	11418	89.3	3.5	0.2	0.2	3.0	1.5	1.9	0.4	89.3	3.5	7.2	0.072	0.502	23.718953	-99.087727
SOTO LA MARINA	116.80	1	0	3255	88.9	2.3	1.2	1.7	1.8	2.2	1.3	0.6	88.9	2.3	8.8	0.069	0.515	23.753460	-98.209893

TAMAULIPAS

6 CARR: CIUDAD VICTORIA - MONTERREY

CLAVE: 00462

RUTA: MEX-085

AÑO: 2010

LUGAR	ESTACION				CLASIFICACION VEHICULAR EN PORCIENTO									COORDENADAS					
	KM	TE	SC	TDPA	A	B	C2	C3	T3S2	T3S3	T3S2R4	OTROS	A	B	C	K'	D	LATITUD	LONGITUD
CD. VICTORIA	0.00	3	1	8416	61.8	4.8	6.8	3.7	7.9	5.2	8.4	1.4	61.8	4.8	33.4	0.065	0.517	23.776852	-99.136849
CD. VICTORIA	0.00	3	2	9005	61.9	4.9	6.6	3.8	7.8	5.2	8.4	1.4	61.9	4.9	33.2	0.055	0.517	23.776852	-99.136849
T. DER. GÜEMEZ	19.60	3	0	7297	59.0	5.1	6.7	4.0	8.8	5.5	9.5	1.4	59.0	5.1	35.9	0.065	0.509	23.915879	-99.112434
T. IZQ. SANTA ENGRACIA	27.35	3	0	6405	60.1	5.2	6.7	3.7	8.2	5.5	9.2	1.4	60.1	5.2	34.7	0.081	0.506	23.982865	-99.111726
BARRETAL	39.00	3	0	6639	60.8	4.9	6.6	3.6	8.0	5.3	9.3	1.5	60.8	4.9	34.3	0.075	0.510	24.091504	-99.139366
T. IZQ. HIDALGO Y LA MESA	77.50	1	0	6428	59.6	5.0	7.1	3.7	8.3	5.5	9.3	1.5	59.6	5.0	35.4	0.072	0.510	24.248166	-99.429559
VILLAGRAN	106.00	1	0	4594	59.5	5.1	6.9	3.6	8.7	5.4	9.3	1.5	59.5	5.1	35.4	0.074	0.500	24.463515	-99.496643
T. IZQ. VILLA MAINERO	118.00	3	0	5208	60.9	4.8	6.4	3.7	8.6	5.2	9.0	1.4	60.9	4.8	34.3	0.080	0.507	24.565323	-99.547298
LIM. EDOS. TERM. TAMP. PPIA. NL.	126.20																		
LINARES	154.00	1	0	4923	61.3	5.0	6.3	3.7	8.2	5.7	8.5	1.3	61.3	5.0	33.7	0.070	0.511	24.829444	-99.556860
LA LAJA	171.00	3	1	4643	60.4	4.8	6.5	3.7	8.4	5.6	9.2	1.4	60.4	4.8	34.8	0.075	0.504	24.918220	-99.686837
LA LAJA	171.00	3	2	4562	60.5	4.7	6.7	3.9	8.4	5.2	9.2	1.4	60.5	4.7	34.8	0.074	0.504	24.918220	-99.686837
MONTEMORELOS	205.00	3	1	5717	59.9	5.1	6.6	3.7	8.9	5.3	9.0	1.5	59.9	5.1	35.0	0.067	0.507	25.191333	-99.881778
MONTEMORELOS	205.00	3	2	5884	60.1	4.8	6.7	3.7	8.9	5.6	8.7	1.5	60.1	4.8	35.1	0.065	0.507	25.191222	-99.881500
ALLENDE	227.45	3	1	10487	73.4	6.8	6.4	1.4	5.2	1.8	4.4	0.6	73.4	6.8	19.8	0.062	0.510	25.289652	-100.043080
ALLENDE	227.45	3	2	10058	73.3	6.5	6.7	1.5	5.1	1.9	4.3	0.7	73.3	6.5	20.2	0.065	0.510	25.289652	-100.043080
EL CERCADO	249.00	1	1	16527	71.1	7.3	7.1	2.1	4.9	1.8	4.9	0.8	71.1	7.3	21.6	0.074	0.513	25.392695	-100.120333
EL CERCADO	249.00	1	2	15718	72.5	5.9	7.4	2.2	5.0	0.9	5.1	1.0	72.5	5.9	21.6	0.075	0.513	25.392695	-100.120333
LA ESTANZUELA	274.82	3	1	28143	71.8	6.0	8.0	2.1	4.9	1.0	5.1	1.1	71.8	6.0	22.2	0.064	0.507	25.579613	-100.250401
LA ESTANZUELA	274.82	3	2	28969	71.4	5.9	8.0	2.3	5.2	0.9	5.3	1.0	71.4	5.9	22.7	0.067	0.507	25.579613	-100.250401
MONTERREY	287.00	1	1	22280	72.8	6.1	6.9	2.2	5.2	0.9	4.9	1.0	72.8	6.1	21.1	0.070	0.511	25.601601	-100.266340
MONTERREY	287.00	1	2	23259	71.7	6.1	7.7	2.1	5.1	0.9	5.3	1.1	71.7	6.1	22.2	0.069	0.511	25.601601	-100.266340

7 CARR: ENT. TULA - CD. VICTORIA

CLAVE: 00179

RUTA: MEX-101

AÑO: 2010

LUGAR	ESTACION				CLASIFICACION VEHICULAR EN PORCIENTO									COORDENADAS					
	KM	TE	SC	TDPA	A	B	C2	C3	T3S2	T3S3	T3S2R4	OTROS	A	B	C	K'	D	LATITUD	LONGITUD
T. C. ANTIGUO MORELOS - EL HUIZACHE	0.00	3	0	3412	67.6	0.6	2.7	4.1	7.5	7.6	9.0	0.9	67.6	0.6	31.8	0.073	0.519	22.737345	-99.968511
LIM. EDOS. TERM. S.L.P. PPIA. TAMP.	2.40																		
T. DER. TULA (1º ACCESO)	38.00	1	0	5196	67.7	4.6	1.8	2.4	8.9	5.9	7.9	0.8	67.7	4.6	27.7	0.076	0.503	22.978922	-99.738150
T. DER. TULA (2º ACCESO)	41.95	3	0	4130	69.8	4.8	1.8	2.6	7.8	5.8	6.8	0.6	69.8	4.8	25.4	0.076	0.510	23.021485	-99.713640
JAUMAVE	112.68	1	0	4885	70.8	4.5	1.7	2.5	7.2	6.9	5.8	0.6	70.8	4.5	24.7	0.077	0.509	23.403588	-99.394779
JAUMAVE	112.68	3	0	6159	67.2	4.8	2.6	3.5	9.2	4.9	7.1	0.7	67.2	4.8	28.0	0.073	0.507	23.418825	-99.373712
CD. VICTORIA	180.00	1	1	3198	72.1	3.6	0.5	1.6	8.1	6.7	6.8	0.6	72.1	3.6	24.3	0.071	0.512	23.710747	-99.176487
CD. VICTORIA	180.00	1	2	3353	72.0	3.5	0.6	1.7	8.0	6.6	6.8	0.8	72.0	3.5	24.5	0.073	0.512	23.710744	-99.176488

TAMAULIPAS

8 CARR: ESTACION MANUEL - T. C. (CD. VICTORIA - SOTO LA MARINA)

CLAVE: 28294

RUTA: MEX-180

AÑO: 2010

LUGAR	ESTACION				CLASIFICACION VEHICULAR EN PORCIENTO								COORDENADAS						
	KM	TE	SC	TDPA	A	B	C2	C3	T3S2	T3S3	T3S2R4	OTROS	A	B	C	K'	D	LATITUD	LONGITUD
ESTACION MANUEL	0.00	3	0	3906	87.5	2.2	3.1	1.2	4.1	0.9	0.5	0.5	87.5	2.2	10.3	0.062	0.521	22.761646	-98.310149
T. DER. ALDAMA	36.00	3	0	3562	86.7	2.2	3.5	1.3	4.3	1.0	0.5	0.5	86.7	2.2	11.1	0.064	0.521	22.960144	-98.070376
ESPERANZA	69.00	3	0	3269	87.4	2.3	3.3	1.2	3.9	0.9	0.5	0.5	87.4	2.3	10.3	0.076	0.510	23.263638	-97.960906
SAN JOSE DE LAS RUSIAS	116.25	3	0	2237	87.0	2.3	3.3	1.3	4.2	0.9	0.5	0.5	87.0	2.3	10.7	0.082	0.538	23.560783	-98.041538
ESTACION MANUEL - T. C. (CD. VICTORIA - S. LA MARINA)	145.00	1	0	2470	86.7	2.4	3.4	1.3	4.3	0.9	0.5	0.5	86.7	2.4	10.9	0.072	0.503	23.720337	-98.215705

9 CARR: GONZALEZ - LLERA DE CANALES

CLAVE: 28578

RUTA: MEX-247

AÑO: 2010

LUGAR	ESTACION				CLASIFICACION VEHICULAR EN PORCIENTO								COORDENADAS						
	KM	TE	SC	TDPA	A	B	C2	C3	T3S2	T3S3	T3S2R4	OTROS	A	B	C	K'	D	LATITUD	LONGITUD
GONZALEZ	0.00	3	0	5391	63.8	6.4	8.4	4.9	5.0	3.6	7.4	0.5	63.8	6.4	29.8	0.086	0.513	22.845784	-98.452176
ESTACION IGNACIO ZARAGOZA	58.50	1	0	5133	65.7	5.3	6.9	4.6	5.9	3.8	7.4	0.4	65.7	5.3	29.0	0.078	0.519	23.183604	-98.771760
T. C. CD. VALLES - CD. VICTORIA	89.00	1	0	5671	66.9	6.4	6.2	4.4	5.1	3.8	6.6	0.6	66.9	6.4	26.7	0.078	0.502	23.312915	-98.973240

10 CARR: IGNACIO ZARAGOZA - T. C. (CIUDAD VICTORIA - MONTERREY)

CLAVE: 28625

RUTA: MEX

AÑO: 2010

LUGAR	ESTACION				CLASIFICACION VEHICULAR EN PORCIENTO								COORDENADAS						
	KM	TE	SC	TDPA	A	B	C2	C3	T3S2	T3S3	T3S2R4	OTROS	A	B	C	K'	D	LATITUD	LONGITUD
T. C. GONZALEZ - LLERA DE CANALES	0.00	3	0	8534	85.7	2.7	3.6	0.1	3.9	1.3	2.3	0.4	85.7	2.7	11.6	0.075	0.507	23.206929	-98.786677
T. C. CIUDAD VICTORIA - MONTERREY	94.30	1	0	2377	75.9	4.0	6.3	3.9	5.8	1.5	2.2	0.4	75.9	4.0	20.1	0.080	0.501	23.956180	-99.101278

11 CARR: LAS URRACAS - T. C. (MATAMOROS - REYNOSA)

CLAVE: 28029

RUTA: MEX-097

AÑO: 2010

LUGAR	ESTACION				CLASIFICACION VEHICULAR EN PORCIENTO								COORDENADAS						
	KM	TE	SC	TDPA	A	B	C2	C3	T3S2	T3S3	T3S2R4	OTROS	A	B	C	K'	D	LATITUD	LONGITUD
T. C. CD. VICTORIA - MATAMOROS	0.00	3	0	5085	74.3	9.8	2.1	1.1	6.5	2.5	3.4	0.3	74.3	9.8	15.9	0.078	0.508	25.077151	-98.076521
LA NUTRIA	41.00	1	0	4967	72.9	9.9	2.7	1.2	7.0	2.9	3.0	0.4	72.9	9.9	17.2	0.090	0.511	25.377880	-98.218130
SANTO DOMINGO	91.50	1	0	5758	72.5	9.5	2.8	1.0	7.4	3.0	3.4	0.4	72.5	9.5	18.0	0.080	0.502	25.827560	-98.259447
T. C. MATAMOROS - REYNOSA	113.25	1	0	6676	70.2	9.4	2.6	1.2	8.7	3.3	4.0	0.6	70.2	9.4	20.4	0.066	0.534	26.035944	-98.278028

12 CARR: LIBRAMIENTO DE REYNOSA

CLAVE: 28008

RUTA: MEX

AÑO: 2010

LUGAR	ESTACION				CLASIFICACION VEHICULAR EN PORCIENTO								COORDENADAS						
	KM	TE	SC	TDPA	A	B	C2	C3	T3S2	T3S3	T3S2R4	OTROS	A	B	C	K'	D	LATITUD	LONGITUD
T. C. MATAMOROS - REYNOSA	0.00	3	1	17815	72.3	2.9	5.4	1.7	5.9	3.5	7.5	0.8	72.3	2.9	24.8	0.068	0.519	26.042392	-98.288408

TAMAULIPAS

12 CARR: LIBRAMIENTO DE REYNOSA

CLAVE: 28008

RUTA: MEX

AÑO: 2010

LUGAR	ESTACION				CLASIFICACION VEHICULAR EN PORCIENTO								COORDENADAS						
	KM	TE	SC	TDPA	A	B	C2	C3	T3S2	T3S3	T3S2R4	OTROS	A	B	C	K'	D	LATITUD	LONGITUD
T. C. MATAMOROS - REYNOSA	0.00	3	2	17371	71.0	3.8	6.1	1.0	6.1	3.4	7.7	0.9	71.0	3.8	25.2	0.069	0.519	26.042744	-98.289011
T. C. MONTERREY - REYNOSA	10.00	1	1	13687	72.0	3.4	4.9	1.4	6.9	3.2	7.3	0.9	72.0	3.4	24.6	0.092	0.506	26.049016	-98.356571
T. C. MONTERREY - REYNOSA	10.00	1	2	13373	74.0	3.1	4.6	0.9	5.2	3.9	7.3	1.0	74.0	3.1	22.9	0.091	0.506	26.048997	-98.356583

13 CARR: MATAMOROS - PLAYA LAURO VILLAR

CLAVE: 28078

RUTA: MEX-002

AÑO: 2010

LUGAR	ESTACION				CLASIFICACION VEHICULAR EN PORCIENTO								COORDENADAS						
	KM	TE	SC	TDPA	A	B	C2	C3	T3S2	T3S3	T3S2R4	OTROS	A	B	C	K'	D	LATITUD	LONGITUD
MATAMOROS	0.00	3	1	4688	88.6	3.5	3.5	2.0	1.0	0.7	0.4	0.3	88.6	3.5	7.9	0.060	0.502	25.835379	-97.418644
MATAMOROS	0.00	3	2	4719	88.8	3.3	3.2	2.0	1.1	0.6	0.7	0.3	88.8	3.3	7.9	0.069	0.502	25.835349	-97.418569
PLAYA LAURO VILLAR	37.00																		

14 CARR: MATAMOROS - REYNOSA

CLAVE: 28077

RUTA: MEX-002

AÑO: 2010

LUGAR	ESTACION				CLASIFICACION VEHICULAR EN PORCIENTO								COORDENADAS						
	KM	TE	SC	TDPA	A	B	C2	C3	T3S2	T3S3	T3S2R4	OTROS	A	B	C	K'	D	LATITUD	LONGITUD
MATAMOROS	0.00	3	0	9405	73.8	5.7	3.4	1.3	7.3	2.4	5.5	0.6	73.8	5.7	20.5	0.080	0.506	25.919521	-97.578139
EMPALME	38.00	1	0	7844	71.2	6.2	3.6	1.2	7.6	3.3	6.2	0.7	71.2	6.2	22.6	0.097	0.500	25.906262	-97.798650
T. DER. NUEVO PROGRESO	57.00	1	0	7485	73.7	6.0	3.7	1.1	5.5	3.2	6.0	0.8	73.7	6.0	20.3	0.075	0.500	25.948872	-97.967410
RIO BRAVO	67.00	1	0	13030	74.0	5.4	3.6	1.1	5.3	3.5	6.4	0.7	74.0	5.4	20.6	0.069	0.504	25.970500	-98.040528
RIO BRAVO	67.00	3	1	12063	74.3	4.8	3.7	1.0	6.2	3.0	6.2	0.8	74.3	4.8	20.9	0.058	0.503	25.994565	-98.124799
RIO BRAVO	67.00	3	2	11909	74.2	4.3	4.1	1.2	6.4	2.9	6.1	0.8	74.2	4.3	21.5	0.057	0.503	25.994495	-98.124796
T. IZQ. AEROPUERTO	85.65	3	1	24345	72.8	4.5	4.2	1.0	6.4	3.6	6.8	0.7	72.8	4.5	22.7	0.073	0.508	26.020889	-98.231306
T. IZQ. AEROPUERTO	85.65	3	2	23601	72.4	4.6	4.3	1.1	6.3	3.8	7.1	0.4	72.4	4.6	23.0	0.069	0.508	26.021083	-98.231056
REYNOSA	98.00	1	1	26702	69.9	4.5	4.2	1.0	6.5	4.5	8.8	0.6	69.9	4.5	25.6	0.061	0.516	26.034245	-98.270739
REYNOSA	98.00	1	2	26626	71.9	4.2	3.8	1.1	6.9	3.7	7.8	0.6	71.9	4.2	23.9	0.061	0.516	26.034245	-98.270739

15 CARR: MONTERREY - MIER

CLAVE: 00127

RUTA: MEX-054

AÑO: 2010

LUGAR	ESTACION				CLASIFICACION VEHICULAR EN PORCIENTO								COORDENADAS						
	KM	TE	SC	TDPA	A	B	C2	C3	T3S2	T3S3	T3S2R4	OTROS	A	B	C	K'	D	LATITUD	LONGITUD
MONTERREY	0.00																		
APODACA	19.12	1	1	32082	68.1	5.1	2.9	1.9	5.9	6.3	8.9	0.9	68.1	5.1	26.8	0.064	0.504	25.770777	-100.189403
APODACA	19.12	1	2	31552	68.2	5.2	2.8	1.1	5.6	7.2	9.0	0.9	68.2	5.2	26.6	0.063	0.504	25.770777	-100.189403
X. C. LIBRAMIENTO NOROESTE DE MONTERREY	21.30	3	1	25505	66.8	4.9	2.7	1.6	6.5	7.6	9.1	0.8	66.8	4.9	28.3	0.073	0.513	25.777821	-100.181760



TAMAULIPAS

15 CARR: MONTERREY - MIER

CLAVE: 00127

RUTA: MEX-054

AÑO: 2010

LUGAR	ESTACION				CLASIFICACION VEHICULAR EN PORCIENTO								COORDENADAS						
	KM	TE	SC	TDPA	A	B	C2	C3	T3S2	T3S3	T3S2R4	OTROS	A	B	C	K'	D	LATITUD	LONGITUD
X. C. LIBRAMIENTO NOROESTE DE MONTERREY	21.30	3	2	24167	66.4	4.8	3.0	1.3	6.4	7.7	9.4	1.0	66.4	4.8	28.8	0.076	0.513	25.777821	-100.181760
X. C. ZACATECAS - PESQUERIA	28.15	1	0	11961	67.0	4.3	2.6	2.6	6.0	6.9	9.6	1.0	67.0	4.3	28.7	0.086	0.507	25.800053	-100.101457
X. C. HACIENDA GUADALUPE - HIGUERAS	38.10	3	0	7549	68.3	4.2	3.2	1.9	6.0	6.6	9.1	0.7	68.3	4.2	27.5	0.062	0.504	25.854724	-100.017517
T. DER. EMPALME LOS RAMONES	74.10	1	0	3024	65.7	4.0	2.8	2.2	8.3	6.4	9.8	0.8	65.7	4.0	30.3	0.070	0.514	25.908720	-99.746181
CERRALVO	95.95	1	0	3900	65.4	4.0	2.9	2.0	8.6	6.3	10.0	0.8	65.4	4.0	30.6	0.098	0.502	26.066683	-99.626309
GRAL. TREVIÑO	115.80	3	0	3963	65.0	4.5	3.1	2.5	8.8	6.8	8.2	1.1	65.0	4.5	30.5	0.096	0.508	26.231891	-99.470849
LIM. EDOS. TERM. NL. PPIA. TAMP.	131.80																		
MIER	156.21	1	0	4816	68.0	4.3	5.5	2.0	10.8	5.1	3.8	0.5	68.0	4.3	27.7	0.081	0.522	26.427018	-99.163747

16 CARR: MONTERREY - NUEVO LAREDO (LIBRE)

CLAVE: 00463

RUTA: MEX-085

AÑO: 2010

LUGAR	ESTACION				CLASIFICACION VEHICULAR EN PORCIENTO								COORDENADAS						
	KM	TE	SC	TDPA	A	B	C2	C3	T3S2	T3S3	T3S2R4	OTROS	A	B	C	K'	D	LATITUD	LONGITUD
MONTERREY	0.00																		
T. IZQ. GRAL. ESCOBEDO	12.10	3	1	20173	71.4	3.9	2.1	1.7	10.4	4.0	5.7	0.8	71.4	3.9	24.7	0.061	0.513	25.786214	-100.283728
T. IZQ. GRAL. ESCOBEDO	12.10	3	2	19140	72.4	3.7	2.1	1.3	10.4	3.5	5.8	0.8	72.4	3.7	23.9	0.060	0.513	25.786214	-100.283728
X. C. LIBRAMIENTO NOROESTE DE MONTERREY	16.00	1	1	16441	73.3	4.5	2.1	1.8	9.8	2.9	4.9	0.7	73.3	4.5	22.2	0.084	0.502	25.826596	-100.260947
X. C. LIBRAMIENTO NOROESTE DE MONTERREY	16.00	1	2	16565	73.2	4.6	2.0	1.7	9.9	3.0	4.8	0.8	73.2	4.6	22.2	0.083	0.502	25.826596	-100.260947
X. C. LIBRAMIENTO NOROESTE DE MONTERREY	16.00	3	1	19620	71.9	5.5	2.2	1.4	9.6	3.1	5.4	0.9	71.9	5.5	22.6	0.089	0.504	25.839212	-100.251795
X. C. LIBRAMIENTO NOROESTE DE MONTERREY	16.00	3	2	19937	72.0	5.8	2.2	1.3	8.9	3.4	5.5	0.9	72.0	5.8	22.2	0.093	0.504	25.839212	-100.251795
X. C. SANTA ROSA - SALINAS VICTORIA	20.19	3	1	18180	71.3	6.1	3.0	2.8	8.4	2.8	4.8	0.8	71.3	6.1	22.6	0.084	0.507	25.854165	-100.241147
X. C. SANTA ROSA - SALINAS VICTORIA	20.19	3	2	17712	70.8	6.3	3.1	2.9	8.6	2.8	4.7	0.8	70.8	6.3	22.9	0.079	0.507	25.854165	-100.241147
CIENEGA DE FLORES	32.00	1	0	13016	70.1	7.4	3.6	3.0	8.4	2.5	4.3	0.7	70.1	7.4	22.5	0.068	0.505	25.945980	-100.174909
T. DER. AGUALEGUAS	78.23	3	0	5909	70.7	7.6	3.4	2.7	8.7	2.4	3.7	0.8	70.7	7.6	21.7	0.070	0.501	26.335727	-100.111806
SABINAS HIDALGO	98.90	3	0	6002	72.8	7.6	3.5	2.6	8.4	1.2	3.3	0.6	72.8	7.6	19.6	0.068	0.502	26.533069	-100.150486
VALLECILLOS	124.40	3	0	3913	74.7	7.7	3.4	2.4	8.2	1.7	1.1	0.8	74.7	7.7	17.6	0.071	0.512	26.664924	-99.977758
T. IZQ. ANAHUAC	156.80	1	0	3489	75.3	7.5	3.4	2.3	7.8	1.6	1.4	0.7	75.3	7.5	17.2	0.091	0.514	26.874790	-99.832463
T. IZQ. ANAHUAC	156.80	3	1	8370	75.8	7.3	3.2	2.4	7.2	1.8	1.6	0.7	75.8	7.3	16.9	0.062	0.504	26.911821	-99.805638
T. IZQ. ANAHUAC	156.80	3	2	8231	75.7	7.4	3.3	2.4	7.2	1.7	1.6	0.7	75.7	7.4	16.9	0.058	0.504	26.912173	-99.805925
LIM. EDOS. TERM. NL. PPIA. TAMP.	184.56																		
T. DER. MIER	205.90	1	1	10075	75.5	2.9	3.2	4.3	5.4	2.2	6.1	0.4	75.5	2.9	21.6	0.075	0.515	27.279374	-99.610012
T. DER. MIER	205.90	1	2	9479	75.6	2.7	3.3	4.2	5.3	2.1	6.2	0.6	75.6	2.7	21.7	0.073	0.515	27.279374	-99.610011
T. DER. MIER	205.90	3	1	6610	71.6	4.2	3.9	5.7	5.6	2.0	6.3	0.7	71.6	4.2	24.2	0.067	0.501	27.319795	-99.588426
T. DER. MIER	205.90	3	2	6630	71.8	4.4	4.2	4.8	4.9	4.0	5.4	0.5	71.8	4.4	23.8	0.068	0.501	27.319796	-99.588429
NUEVO LAREDO	228.00	1	1	9742	76.3	3.8	2.9	5.9	4.7	2.3	3.7	0.4	76.3	3.8	19.9	0.069	0.506	27.421930	-99.533939

TAMAULIPAS

16 CARR: MONTERREY - NUEVO LAREDO (LIBRE)

CLAVE: 00463

RUTA: MEX-085

AÑO: 2010

LUGAR	ESTACION				CLASIFICACION VEHICULAR EN PORCIENTO								COORDENADAS						
	KM	TE	SC	TDPA	A	B	C2	C3	T3S2	T3S3	T3S2R4	OTROS	A	B	C	K'	D	LATITUD	LONGITUD
NUEVO LAREDO	228.00	1	2	9967	76.6	3.9	2.7	5.7	4.5	2.2	3.8	0.6	76.6	3.9	19.5	0.070	0.506	27.421932	-99.533937

17 CARR: MONTERREY - REYNOSA (LIBRE)

CLAVE: 00088

RUTA: MEX-040

AÑO: 2010

LUGAR	ESTACION				CLASIFICACION VEHICULAR EN PORCIENTO								COORDENADAS						
	KM	TE	SC	TDPA	A	B	C2	C3	T3S2	T3S3	T3S2R4	OTROS	A	B	C	K'	D	LATITUD	LONGITUD
T. C. MONTERREY - MIER	0.00																		
VILLA JUAREZ	19.10	1	1	17876	62.6	1.9	8.6	5.7	13.5	3.5	3.3	0.9	62.6	1.9	35.5	0.058	0.505	25.653586	-100.116625
VILLA JUAREZ	19.10	1	2	18240	64.1	2.1	7.9	5.4	13.6	3.2	2.8	0.9	64.1	2.1	33.8	0.058	0.505	25.653586	-100.116625
VILLA JUAREZ	19.10	3	1	12938	65.0	1.8	8.1	5.8	12.4	2.7	3.2	1.0	65.0	1.8	33.2	0.064	0.502	25.636330	-100.083098
VILLA JUAREZ	19.10	3	2	13056	63.3	1.7	9.2	6.2	13.8	2.5	2.6	0.7	63.3	1.7	35.0	0.065	0.502	25.636330	-100.083098
PUENTE CADEREYTA	30.50	2	0	5010	61.4	0.6	7.2	5.4	13.7	4.0	2.7	5.0	61.4	0.6	38.0			25.601076	-100.005752
REFINERIA DE CADEREYTA	33.00	3	0	7547	61.6	2.1	8.3	5.8	14.3	4.9	2.2	0.8	61.6	2.1	36.3	0.078	0.510	25.587242	-99.899116
T. IZQ. LOS RAMONES	68.78	3	0	4506	60.3	1.6	7.7	6.2	15.3	5.2	2.7	1.0	60.3	1.6	38.1	0.062	0.508	25.621133	-99.625433
GRAL. BRAVO	125.00	1	0	6353	65.5	1.8	7.4	5.2	13.3	3.6	2.3	0.9	65.5	1.8	32.7	0.071	0.502	25.774835	-99.190147
LIM. EDOS. TERM. NL. PPIA. TAMPS.	192.00																		
T. IZQ. DIAZ ORDAZ	192.55	1	1	6001	67.9	3.2	8.0	2.2	10.8	4.0	3.4	0.5	67.9	3.2	28.9	0.069	0.503	25.968349	-98.591847
T. IZQ. DIAZ ORDAZ	192.55	1	2	6078	66.6	3.1	8.5	2.6	11.4	4.0	3.4	0.4	66.6	3.1	30.3	0.075	0.503	25.968015	-98.594170
REYNOSA	225.00	1	1	16983	68.4	3.4	8.2	1.4	11.0	4.2	2.6	0.8	68.4	3.4	28.2	0.076	0.511	26.047492	-98.389438
REYNOSA	225.00	1	2	16891	70.0	3.1	8.1	1.4	9.9	4.3	2.7	0.5	70.0	3.1	26.9	0.079	0.511	26.047497	-98.389431

18 CARR: PARAS - NUEVA CIUDAD GUERRERO

CLAVE: 00476

RUTA: MEX-030

AÑO: 2010

LUGAR	ESTACION				CLASIFICACION VEHICULAR EN PORCIENTO								COORDENADAS						
	KM	TE	SC	TDPA	A	B	C2	C3	T3S2	T3S3	T3S2R4	OTROS	A	B	C	K'	D	LATITUD	LONGITUD
PARAS	0.00	3	0	789	85.8	5.0	1.8	0.5	1.9	0.6	3.5	0.9	85.8	5.0	9.2	0.086	0.509	26.502232	-99.514533
LIM. EDOS. TERM. NL. PPIA. TAMS.	13.10																		
T. C. REYNOSA - (T. C. MONTERREY - NUEVO LAREDO)	32.00	1	0	600	84.1	2.2	2.8	1.0	3.1	4.5	1.8	0.5	84.1	2.2	13.7	0.100	0.507	26.555284	-99.244216

19 CARR: PIEDRAS NEGRAS - NUEVO LAREDO

CLAVE: 00503

RUTA: MEX-002

AÑO: 2010

LUGAR	ESTACION				CLASIFICACION VEHICULAR EN PORCIENTO								COORDENADAS						
	KM	TE	SC	TDPA	A	B	C2	C3	T3S2	T3S3	T3S2R4	OTROS	A	B	C	K'	D	LATITUD	LONGITUD
T. C. MONCLOVA - PIEDRAS NEGRAS	0.00	3	1	3181	74.3	5.1	2.0	1.9	5.9	4.0	5.9	0.9	74.3	5.1	20.6	0.081	0.510	28.629336	-100.545509
T. C. MONCLOVA - PIEDRAS NEGRAS	0.00	3	2	3309	73.8	5.2	2.2	1.8	6.1	3.9	6.1	0.9	73.8	5.2	21.0	0.080	0.510	28.629384	-100.545557

TAMAULIPAS

19 CARR: PIEDRAS NEGRAS - NUEVO LAREDO

CLAVE: 00503

RUTA: MEX-002

AÑO: 2010

LUGAR	ESTACION				CLASIFICACION VEHICULAR EN PORCIENTO								COORDENADAS						
	KM	TE	SC	TDPA	A	B	C2	C3	T3S2	T3S3	T3S2R4	OTROS	A	B	C	K'	D	LATITUD	LONGITUD
EL SAUCITO	16.90	3	0	2578	73.9	4.9	2.8	1.5	7.2	3.4	5.5	0.8	73.9	4.9	21.2	0.073	0.516	28.462459	-100.442233
GUERRERO	42.00	3	0	1203	71.9	4.5	3.2	2.7	7.4	3.7	5.7	0.9	71.9	4.5	23.6	0.073	0.508	28.307883	-100.366524
LIM. EDOS. TERM. COAH. PPIA. N.L.	113.00																		
LIM. EDOS. TERM. N.L. PPIA. TAMP.	137.00																		
T. DER. LIBRAMIENTO DE NUEVO LAREDO	168.90	1	1	3972	67.2	5.6	5.7	6.6	5.9	3.6	4.8	0.6	67.2	5.6	27.2	0.098	0.506	27.571831	-99.599152
T. DER. LIBRAMIENTO DE NUEVO LAREDO	168.90	1	2	4064	67.6	5.5	5.7	6.5	5.9	3.6	4.6	0.6	67.6	5.5	26.9	0.104	0.506	27.571856	-99.599708
NUEVO LAREDO	175.00	1	0	7988	67.4	5.4	5.6	6.7	5.8	3.7	4.8	0.6	67.4	5.4	27.2	0.072	0.507	27.542987	-99.575879

20 CARR: REYNOSA - NUEVO LAREDO

CLAVE: 28076

RUTA: MEX-002

AÑO: 2010

LUGAR	ESTACION				CLASIFICACION VEHICULAR EN PORCIENTO								COORDENADAS						
	KM	TE	SC	TDPA	A	B	C2	C3	T3S2	T3S3	T3S2R4	OTROS	A	B	C	K'	D	LATITUD	LONGITUD
REYNOSA	0.00	3	0	12370	70.9	2.2	7.3	2.4	8.7	5.2	2.9	0.4	70.9	2.2	26.9	0.071	0.504	26.106669	-98.325273
X. C. LOS DOS ESTADOS - GUSTAVO DIAZ ORDAZ	35.68	3	0	7375	73.3	2.4	7.7	1.7	7.4	4.4	2.8	0.3	73.3	2.4	24.3	0.100	0.510	26.212957	-98.596705
CD. CAMARGO	63.40	3	0	5996	72.1	2.4	8.1	1.1	7.3	4.7	3.7	0.6	72.1	2.4	25.5	0.068	0.508	26.306757	-98.838648
PUENTE SAN JUAN	64.00	2	0	2052	71.1	2.3	7.6	2.3	7.4	3.4	3.2	2.7	71.1	2.3	26.6			26.311912	-98.841906
CD. MIGUEL ALEMAN	87.77	3	0	5960	71.7	2.4	7.9	1.8	7.4	4.6	3.4	0.8	71.7	2.4	25.9	0.071	0.506	26.391755	-99.100287
MIER	102.35	3	0	3516	70.6	3.0	8.5	2.5	7.5	4.6	2.6	0.7	70.6	3.0	26.4	0.080	0.502	26.449736	-99.153819
T. DER. NUEVA CD. GUERRERO (2º ACCESO)	122.67	3	0	3750	70.5	2.8	8.2	2.8	7.5	4.8	2.5	0.9	70.5	2.8	26.7	0.107	0.517	26.557698	-99.243849
T. C. MONTERREY - NUEVO LAREDO	221.08	1	0	2864	72.6	2.7	7.9	1.0	7.4	5.2	2.4	0.8	72.6	2.7	24.7	0.064	0.509	27.299563	-99.590660

21 CARR: SOTO LA MARINA - LA COMA

CLAVE: 28052

RUTA: MEX-180

AÑO: 2010

LUGAR	ESTACION				CLASIFICACION VEHICULAR EN PORCIENTO								COORDENADAS						
	KM	TE	SC	TDPA	A	B	C2	C3	T3S2	T3S3	T3S2R4	OTROS	A	B	C	K'	D	LATITUD	LONGITUD
SOTO LA MARINA	0.00	3	0	2752	77.0	6.0	4.6	2.3	6.0	2.2	1.3	0.6	77.0	6.0	17.0	0.076	0.534	23.783795	-98.196536
LA COMA	86.00	1	0	1270	76.4	6.4	4.9	2.4	5.6	2.3	1.4	0.6	76.4	6.4	17.2	0.087	0.544	24.464297	-98.339319

22 CARR: TAMPICO - CD. MANTE

CLAVE: 28163

RUTA: MEX-080

AÑO: 2010

LUGAR	ESTACION				CLASIFICACION VEHICULAR EN PORCIENTO								COORDENADAS						
	KM	TE	SC	TDPA	A	B	C2	C3	T3S2	T3S3	T3S2R4	OTROS	A	B	C	K'	D	LATITUD	LONGITUD
TAMPICO	0.00																		
T. DER. CYANAQUIM	14.79	1	1	21151	87.2	4.4	2.1	1.7	2.3	1.0	1.2	0.1	87.2	4.4	8.4	0.063	0.507	22.367365	-97.899469
T. DER. CYANAQUIM	14.79	1	2	21069	87.9	4.1	1.9	1.7	2.1	1.0	1.2	0.1	87.9	4.1	8.0	0.061	0.507	22.367365	-97.899469

TAMAULIPAS

22 CARR: TAMPICO - CD. MANTE

CLAVE: 28163

RUTA: MEX-080

AÑO: 2010

LUGAR	ESTACION				CLASIFICACION VEHICULAR EN PORCIENTO								COORDENADAS						
	KM	TE	SC	TDPA	A	B	C2	C3	T3S2	T3S3	T3S2R4	OTROS	A	B	C	K'	D	LATITUD	LONGITUD
ALTAMIRA	24.00	1	1	7707	86.9	4.6	2.1	1.7	2.3	1.1	1.2	0.1	86.9	4.6	8.5	0.062	0.509	22.385876	-97.918123
ALTAMIRA	24.00	1	2	7533	86.7	4.8	2.0	1.7	2.4	1.0	1.3	0.1	86.7	4.8	8.5	0.063	0.509	22.385876	-97.918123
ALTAMIRA	24.00	3	1	6497	72.6	2.5	4.3	3.2	6.3	3.6	7.1	0.4	72.6	2.5	24.9	0.073	0.508	22.427131	-97.950187
ALTAMIRA	24.00	3	2	6287	71.8	2.6	4.1	3.3	6.5	3.5	7.8	0.4	71.8	2.6	25.6	0.064	0.508	22.426598	-97.949834
T. DER. LOMAS DEL REAL	33.00	3	1	6156	70.4	2.7	4.6	3.4	6.7	3.9	7.9	0.4	70.4	2.7	26.9	0.070	0.507	22.473790	-97.995784
T. DER. LOMAS DEL REAL	33.00	3	2	5986	71.8	2.4	4.1	3.6	6.5	3.6	7.6	0.4	71.8	2.4	25.8	0.071	0.507	22.473761	-97.995798
CUAUHEMOC	55.80	3	1	3398	71.5	2.7	4.2	3.3	6.6	3.7	7.6	0.4	71.5	2.7	25.8	0.066	0.502	22.582322	-98.176614
CUAUHEMOC	55.80	3	2	3373	70.8	2.7	4.2	3.7	7.1	3.7	7.4	0.4	70.8	2.7	26.5	0.069	0.502	22.573026	-98.168634
ESTACION MANUEL	78.12	1	0	5287	70.3	2.7	4.3	3.5	7.1	3.7	8.0	0.4	70.3	2.7	27.0	0.064	0.507	22.673422	-98.252031
GONZALEZ	96.00	3	0	4360	71.0	2.6	4.2	3.5	6.9	3.8	7.6	0.4	71.0	2.6	26.4	0.078	0.506	22.821268	-98.454292
MAXCALTZIN	122.50	3	0	2113	70.7	2.7	4.4	3.6	6.9	3.8	7.5	0.4	70.7	2.7	26.6	0.090	0.501	22.801606	-98.711085
FAJA DE ORO	143.00	3	0	3052	72.1	2.6	3.9	3.3	6.4	3.7	7.6	0.4	72.1	2.6	25.3	0.074	0.503	22.723929	-98.870740
T. C. CD. VALLES - CD. VICTORIA	155.00	1	0	3691	70.6	2.8	4.3	3.5	6.7	4.0	7.7	0.4	70.6	2.8	26.6	0.078	0.511	22.725089	-98.954957

23 CARR: TUXPAM - TAMPICO

CLAVE: 00529

RUTA: MEX-180

AÑO: 2010

LUGAR	ESTACION				CLASIFICACION VEHICULAR EN PORCIENTO								COORDENADAS						
	KM	TE	SC	TDPA	A	B	C2	C3	T3S2	T3S3	T3S2R4	OTROS	A	B	C	K'	D	LATITUD	LONGITUD
TUXPAM	0.00	3	0	4987	71.1	5.0	6.5	2.8	7.4	3.1	3.7	0.4	71.1	5.0	23.9	0.059	0.506	20.955054	-97.462405
T. IZQ. LA LAJUELA	28.70	1	0	3609	71.6	4.9	6.2	2.9	7.4	3.0	3.6	0.4	71.6	4.9	23.5	0.062	0.503	21.073836	-97.643322
T. IZQ. TEMPOAL DE SANCHEZ	45.20	1	0	3710	70.5	5.3	6.3	3.1	7.6	3.1	3.7	0.4	70.5	5.3	24.2	0.062	0.501	21.079162	-97.726715
CERRO AZUL	56.66	1	0	8136	71.1	5.2	6.2	2.8	7.6	3.0	3.7	0.4	71.1	5.2	23.7	0.060	0.500	21.178439	-97.751615
T. IZQ. NARANJOS	78.60	1	0	9061	70.6	5.3	6.3	3.1	7.5	3.3	3.5	0.4	70.6	5.3	24.1	0.064	0.505	21.334644	-97.695533
T. IZQ. NARANJOS	78.60	3	0	8182	70.4	5.0	6.8	3.0	7.4	3.3	3.7	0.4	70.4	5.0	24.6	0.063	0.504	21.368628	-97.685013
T. DER. OZULUAMA	124.42	1	0	6028	67.8	5.3	5.9	3.8	8.7	4.0	4.3	0.2	67.8	5.3	26.9	0.078	0.501	21.671505	-97.859942
T. DER. OZULUAMA	124.42	3	0	5604	68.1	5.2	5.8	3.7	8.8	4.2	4.0	0.2	68.1	5.2	26.7	0.066	0.517	21.683667	-97.856077
TAMPICO ALTO	177.80	1	0	6480	67.9	5.4	5.6	3.7	9.0	4.0	4.2	0.2	67.9	5.4	26.7	0.063	0.502	22.117546	-97.804496
TAMPICO ALTO	177.80	3	0	6886	68.6	5.4	5.7	3.6	8.3	4.2	4.0	0.2	68.6	5.4	26.0	0.069	0.507	22.107189	-97.803404
VILLA CUAUHEMOC	186.85	1	0	6391	69.1	5.3	5.7	3.4	8.3	3.8	4.2	0.2	69.1	5.3	25.6	0.064	0.509	22.192080	-97.834426
VILLA CUAUHEMOC	186.85	3	0	5329	67.6	5.5	6.0	3.8	8.5	4.1	4.3	0.2	67.6	5.5	26.9	0.063	0.509	22.174194	-97.833306
LIM. EDOS. TERM. VER. PPIA. TAMPS. (RIO PANUCO)	189.82																		
TAMPICO	191.43	1	1	5949	68.9	5.1	5.5	3.5	8.5	4.0	4.3	0.2	68.9	5.1	26.0	0.074	0.504	22.214721	-97.824515
TAMPICO	191.43	1	2	6043	68.0	5.2	5.8	3.6	8.7	4.1	4.4	0.2	68.0	5.2	26.8	0.077	0.504	22.214721	-97.824515





TAMAULIPAS

33 CARR: LIBRAMIENTO DE CD. VICTORIA

CLAVE: 28282

RUTA: TAM

AÑO: 2010

LUGAR	ESTACION				CLASIFICACION VEHICULAR EN PORCIENTO								COORDENADAS						
	KM	TE	SC	TDPA	A	B	C2	C3	T3S2	T3S3	T3S2R4	OTROS	A	B	C	K'	D	LATITUD	LONGITUD
T. C. CD. VALLES - CD. VICTORIA	0.00	3	1	11326	78.9	8.1	2.2	0.5	4.2	2.1	3.4	0.6	78.9	8.1	13.0	0.081	0.504	23.674855	-99.098486
T. C. CD. VALLES - CD. VICTORIA	0.00	3	2	11512	79.4	7.9	2.0	0.4	4.3	2.0	3.6	0.4	79.4	7.9	12.7	0.084	0.504	23.674433	-99.098947
X. C. CD. VICTORIA - MATAMOROS	8.70	1	1	6761	86.4	5.2	1.4	0.6	4.5	0.1	1.1	0.7	86.4	5.2	8.4	0.071	0.524	23.763168	-99.111067
X. C. CD. VICTORIA - MATAMOROS	8.70	1	2	6756	86.3	5.1	1.3	0.7	4.8	0.2	1.0	0.6	86.3	5.1	8.6	0.071	0.524	23.763168	-99.111067
X. C. ENT. TULA - CD. VICTORIA	21.10	1	1	11220	86.4	5.2	1.4	0.6	4.5	0.1	1.1	0.7	86.4	5.2	8.4	0.084	0.502	23.712713	-99.175813
X. C. ENT. TULA - CD. VICTORIA	21.10	1	2	11122	86.3	5.1	1.3	0.7	4.8	0.2	1.0	0.6	86.3	5.1	8.6	0.081	0.502	23.712715	-99.175786

34 CARR: LIBRAMIENTO DE NUEVO LAREDO

CLAVE: 28030

RUTA: TAM

AÑO: 2010

LUGAR	ESTACION				CLASIFICACION VEHICULAR EN PORCIENTO								COORDENADAS						
	KM	TE	SC	TDPA	A	B	C2	C3	T3S2	T3S3	T3S2R4	OTROS	A	B	C	K'	D	LATITUD	LONGITUD
T. C. MONTERREY - NUEVO LAREDO	0.00	3	1	11793	73.5	4.7	2.9	3.3	7.9	2.5	4.6	0.6	73.5	4.7	21.8	0.066	0.514	27.426605	-99.541246
T. C. MONTERREY - NUEVO LAREDO	0.00	3	2	11159	72.7	4.9	2.7	3.1	8.2	2.9	4.7	0.8	72.7	4.9	22.4	0.068	0.514	27.426599	-99.541271
T. C. PIEDRAS NEGRAS - NUEVO LAREDO	18.00	1	0	10123	71.4	4.6	2.8	3.2	8.4	3.4	5.2	1.0	71.4	4.6	24.0	0.061	0.506	27.538941	-99.579565

35 CARR: LIBRAMIENTO DE NUEVO LAREDO II

CLAVE: 28626

RUTA: TAM

AÑO: 2010

LUGAR	ESTACION				CLASIFICACION VEHICULAR EN PORCIENTO								COORDENADAS						
	KM	TE	SC	TDPA	A	B	C2	C3	T3S2	T3S3	T3S2R4	OTROS	A	B	C	K'	D	LATITUD	LONGITUD
T. C. MONTERREY - NUEVO LAREDO	0.00	3	0	7533	75.3	4.8	3.9	1.2	8.7	2.8	2.9	0.4	75.3	4.8	19.9	0.064	0.504	27.308937	-99.608353
T. C. PIEDRAS NEGRAS - NUEVO LAREDO	32.20	1	0	6598	72.2	4.9	5.4	2.6	7.8	4.9	1.8	0.4	72.2	4.9	22.9	0.073	0.506	27.559286	-99.601709

36 CARR: LIBRAMIENTO DE RIO BRAVO

CLAVE: 28002

RUTA: TAM

AÑO: 2010

LUGAR	ESTACION				CLASIFICACION VEHICULAR EN PORCIENTO								COORDENADAS						
	KM	TE	SC	TDPA	A	B	C2	C3	T3S2	T3S3	T3S2R4	OTROS	A	B	C	K'	D	LATITUD	LONGITUD
T. C. MATAMOROS - REYNOSA (1° ACCESO)	0.00	3	1	5659	79.8	3.3	2.7	1.3	5.2	2.6	4.5	0.6	79.8	3.3	16.9	0.055	0.506	25.971955	-98.058117
T. C. MATAMOROS - REYNOSA (1° ACCESO)	0.00	3	2	5808	78.4	3.5	2.8	1.4	5.3	3.2	4.7	0.7	78.4	3.5	18.1	0.061	0.506	25.971955	-98.058116
T. C. MATAMOROS - REYNOSA (2° ACCESO)	13.10	1	1	9448	80.6	3.4	2.7	1.3	4.9	2.5	3.9	0.7	80.6	3.4	16.0	0.065	0.502	25.992084	-98.128720
T. C. MATAMOROS - REYNOSA (2° ACCESO)	13.10	1	2	9369	82.4	3.2	2.4	1.5	4.2	2.3	3.6	0.4	82.4	3.2	14.4	0.063	0.502	25.992059	-98.128727

TAMAULIPAS

37 CARR: LOS GUERRA - LOS HERRERAS

CLAVE:

RUTA: TAM-NL

AÑO: 2010

LUGAR	ESTACION				CLASIFICACION VEHICULAR EN PORCIENTO								COORDENADAS						
	KM	TE	SC	TDPA	A	B	C2	C3	T3S2	T3S3	T3S2R4	OTROS	A	B	C	K'	D	LATITUD	LONGITUD
LOS GUERRA	0.00	3	0	193	81.2	5.6	6.7	1.3	2.5	1.4	0.8	0.5	81.2	5.6	13.2	0.083	0.522	26.382783	-99.081243
LOS HERRERA	73.00	1	0	473	80.4	5.2	5.4	2.7	2.4	1.7	1.3	0.9	80.4	5.2	14.4	0.082	0.500	25.902619	-99.393633

38 CARR: PEÑA BLANCA - CD. CAMARGO

CLAVE: 00102

RUTA: NL-TAM

AÑO: 2010

LUGAR	ESTACION				CLASIFICACION VEHICULAR EN PORCIENTO								COORDENADAS						
	KM	TE	SC	TDPA	A	B	C2	C3	T3S2	T3S3	T3S2R4	OTROS	A	B	C	K'	D	LATITUD	LONGITUD
T. C. MONTERREY - REYNOSA	0.00	3	0	1171	84.2	4.7	2.5	1.9	2.9	2.0	1.3	0.5	84.2	4.7	11.1	0.113	0.541	25.836665	-99.008376
LIM. EDOS. TERM. NL. PPIA. TAMS.	30.00																		
LOS COMALES	40.00	3	0	1564	81.9	4.9	3.1	1.1	4.7	3.3	0.5	0.5	81.9	4.9	13.2	0.069	0.505	26.191602	-98.914197
CD. CAMARGO	65.00	1	0	1585	80.6	4.8	3.0	1.1	4.0	5.3	0.6	0.6	80.6	4.8	14.6	0.085	0.507	26.303137	-98.834752

39 CARR: POTRERO NUEVO - RANCHO EL MEZQUITAL

CLAVE: 28615

RUTA: TAM

AÑO: 2010

LUGAR	ESTACION				CLASIFICACION VEHICULAR EN PORCIENTO								COORDENADAS						
	KM	TE	SC	TDPA	A	B	C2	C3	T3S2	T3S3	T3S2R4	OTROS	A	B	C	K'	D	LATITUD	LONGITUD
T. C. CD. VICTORIA - MATAMOROS	0.00	3	0	1004	86.2	10.5	0.9	0.1	1.9	0.1	0.1	0.2	86.2	10.5	3.3	0.069	0.502	25.713132	-97.570936
PUERTO EL MEZQUITAL	66.00																		

40 CARR: RAMAL A GOMEZ FARIAS

CLAVE: 28020

RUTA: TAM-020

AÑO: 2010

LUGAR	ESTACION				CLASIFICACION VEHICULAR EN PORCIENTO								COORDENADAS						
	KM	TE	SC	TDPA	A	B	C2	C3	T3S2	T3S3	T3S2R4	OTROS	A	B	C	K'	D	LATITUD	LONGITUD
T. C. CD. VALLES - CD. VICTORIA	0.00	3	0	4333	66.9	6.3	7.4	5.0	6.9	4.3	2.8	0.4	66.9	6.3	26.8	0.078	0.504	23.024189	-99.094001
GOMEZ FARIAS	11.00	1	0	5405	67.5	4.6	6.8	3.8	7.2	3.4	6.3	0.4	67.5	4.6	27.9	0.066	0.503	23.034361	-99.150065

41 CARR: RAMAL A XICOTENCATL

CLAVE: 28619

RUTA: TAM

AÑO: 2010

LUGAR	ESTACION				CLASIFICACION VEHICULAR EN PORCIENTO								COORDENADAS						
	KM	TE	SC	TDPA	A	B	C2	C3	T3S2	T3S3	T3S2R4	OTROS	A	B	C	K'	D	LATITUD	LONGITUD
T. C. CD. VALLES - CD. VICTORIA	0.00	3	0	2270	87.4	4.1	4.4	0.1	1.1	1.2	1.4	0.3	87.4	4.1	8.5	0.078	0.516	22.931542	-99.026015
XICOTENCATL	13.00	1	0	2421	89.2	3.7	3.6	0.3	1.7	0.3	0.9	0.3	89.2	3.7	7.1	0.067	0.507	22.982828	-98.950402



TAMAULIPAS

42 CARR: SAN FERNANDO - CARBONERAS

CLAVE: 28618

RUTA: TAM

AÑO: 2010

LUGAR	ESTACION				CLASIFICACION VEHICULAR EN PORCIENTO								COORDENADAS						
	KM	TE	SC	TDPA	A	B	C2	C3	T3S2	T3S3	T3S2R4	OTROS	A	B	C	K'	D	LATITUD	LONGITUD
SAN FERNANDO	0.00	3	0	3099	89.3	2.6	1.4	1.3	2.6	1.1	1.3	0.4	89.3	2.6	8.1	0.079	0.525	24.837154	-98.120218
CARBONERAS	57.00																		

43 CARR: SOTO LA MARINA - LA PESCA

CLAVE: 28049

RUTA: TAM-070

AÑO: 2010

LUGAR	ESTACION				CLASIFICACION VEHICULAR EN PORCIENTO								COORDENADAS						
	KM	TE	SC	TDPA	A	B	C2	C3	T3S2	T3S3	T3S2R4	OTROS	A	B	C	K'	D	LATITUD	LONGITUD
T. C. SOTO LA MARINA - LA COMA	0.00	3	0	1356	78.3	5.4	4.2	2.7	3.7	1.7	3.4	0.6	78.3	5.4	16.3	0.073	0.509	23.778877	-98.188391
LA PESCA	50.00																		

44 CARR: T. C. (VALLE HERMOSO - EMPALME) - MATAMOROS

CLAVE: 28005

RUTA: TAM-005

AÑO: 2010

LUGAR	ESTACION				CLASIFICACION VEHICULAR EN PORCIENTO								COORDENADAS						
	KM	TE	SC	TDPA	A	B	C2	C3	T3S2	T3S3	T3S2R4	OTROS	A	B	C	K'	D	LATITUD	LONGITUD
T. C. VALLE HERMOSO - EMPALME	0.00	3	0	8022	68.9	9.6	4.8	1.3	4.5	3.6	6.8	0.5	68.9	9.6	21.5	0.063	0.518	25.775169	-97.787794
ANAHUAC	2.00	3	0	5878	67.4	9.6	4.9	2.0	4.7	3.7	7.0	0.7	67.4	9.6	23.0	0.078	0.502	25.775147	-97.766231
MATAMOROS	33.90	1	0	17669	66.7	9.3	4.7	1.4	5.8	4.9	6.9	0.3	66.7	9.3	24.0	0.063	0.502	25.869444	-97.553444

45 CARR: VALLE HERMOSO - EMPALME

CLAVE: 28004

RUTA: TAM-004

AÑO: 2010

LUGAR	ESTACION				CLASIFICACION VEHICULAR EN PORCIENTO								COORDENADAS						
	KM	TE	SC	TDPA	A	B	C2	C3	T3S2	T3S3	T3S2R4	OTROS	A	B	C	K'	D	LATITUD	LONGITUD
VALLE HERMOSO	0.00	3	0	7546	77.4	8.5	1.9	0.7	4.7	1.8	4.2	0.8	77.4	8.5	14.1	0.078	0.504	25.695910	-97.815846
EMPALME	28.38	1	0	5222	78.0	9.3	1.9	1.1	3.3	1.8	3.9	0.7	78.0	9.3	12.7	0.081	0.509	25.877605	-97.795737

46 CARR: VALLE HERMOSO - LAS YESCAS

CLAVE: 28614

RUTA: TAM

AÑO: 2010

LUGAR	ESTACION				CLASIFICACION VEHICULAR EN PORCIENTO								COORDENADAS						
	KM	TE	SC	TDPA	A	B	C2	C3	T3S2	T3S3	T3S2R4	OTROS	A	B	C	K'	D	LATITUD	LONGITUD
VALLE HERMOSO	0.00	3	0	4766	80.5	5.4	2.2	1.6	4.4	2.8	2.7	0.4	80.5	5.4	14.1	0.086	0.506	25.647300	-97.816083
T. C. CD. VICTORIA - MATAMOROS	26.00	1	0	2211	80.1	5.3	3.0	1.5	3.8	2.7	3.2	0.4	80.1	5.3	14.6	0.114	0.507	25.451866	-97.815777

TAMAULIPAS

47 CARR: SANTANDER JIMENEZ - ENT. EL OJITO

CLAVE: 28579

RUTA: MEX-107-TAM

AÑO: 2010

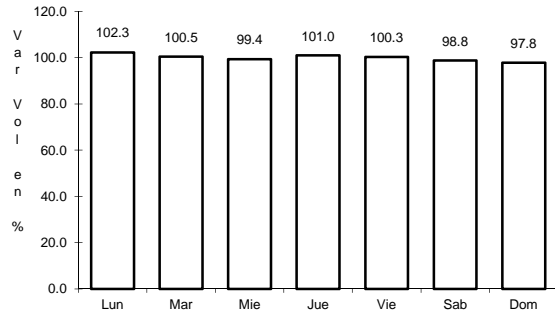
L U G A R	E S T A C I O N				C L A S I F I C A C I O N V E H I C U L A R								E N P O R C I E N T O				C O O R D E N A D A S		
	KM	TE	SC	TDPA	A	B	C2	C3	T3S2	T3S3	T3S2R4	OTROS	A	B	C	K'	D	LATITUD	LONGITUD
T. C. CD. VICTORIA - MATAMOROS	0.00	3	0	1419	83.9	3.4	5.1	1.5	3.6	1.2	0.4	0.9	83.9	3.4	12.7	0.075	0.504	24.207801	-98.479418
ABASOLO	20.00	1	0	2897	82.9	3.6	6.3	1.3	3.4	1.0	1.0	0.5	82.9	3.6	13.5	0.069	0.506	24.064244	-98.382882
T. C. SOTO LA MARINA - LA COMA	58.00	1	0	485	84.8	3.8	5.0	0.4	3.1	1.7	0.4	0.8	84.8	3.8	11.4	0.074	0.501	23.942693	-98.173545



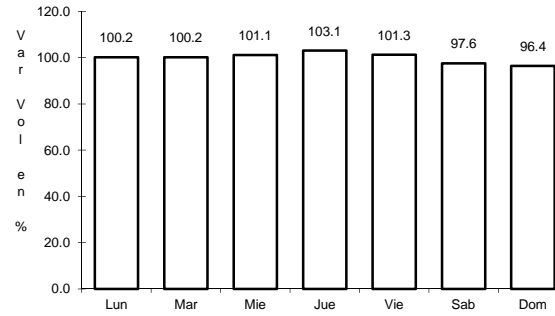
4 CARR: CD. VICTORIA - MATAMOROS

CLAVE: 28139

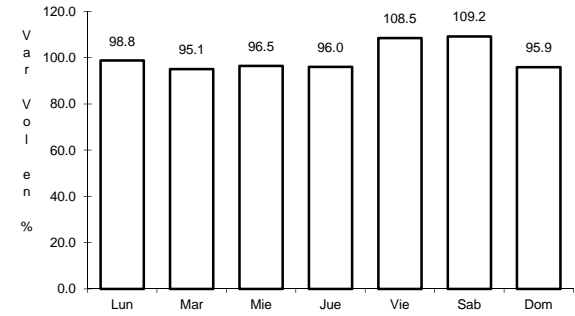
RUTA: MEX-101-180



Km: 5.00      Tipo: 3      Sent: 1



Km: 5.00      Tipo: 3      Sent: 2

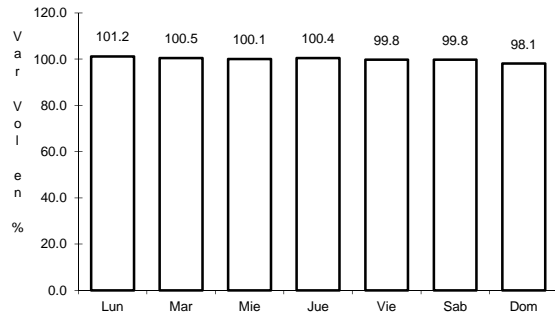


Km: 286.00      Tipo: 3      Sent: 0

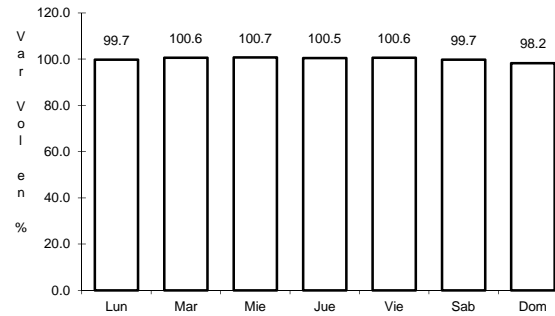
5 CARR: CD. VICTORIA - SOTO LA MARINA

CLAVE: 28009

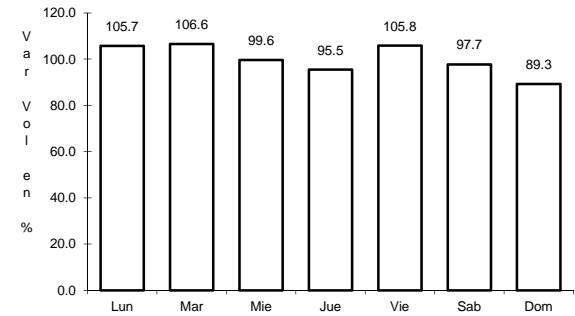
RUTA: MEX



Km: 0.00      Tipo: 3      Sent: 1



Km: 0.00      Tipo: 3      Sent: 2

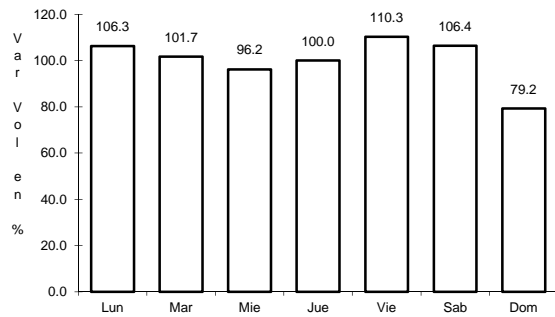


Km: 116.80      Tipo: 1      Sent: 0

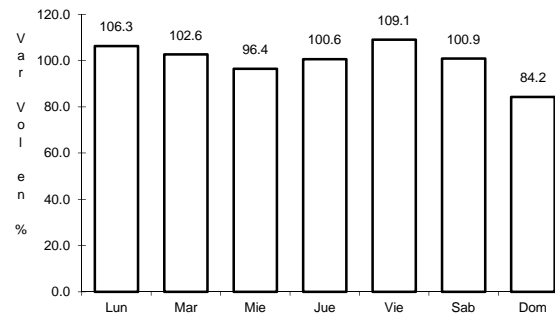
6 CARR: CIUDAD VICTORIA - MONTERREY

CLAVE: 00462

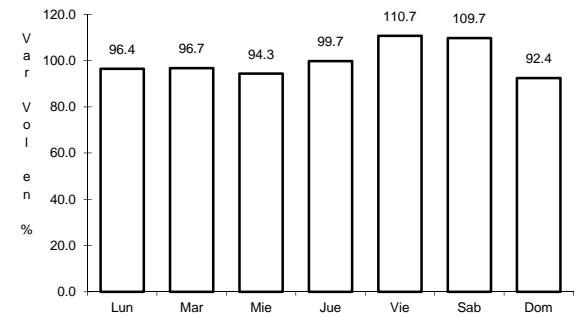
RUTA: MEX-085



Km: 0.00      Tipo: 3      Sent: 1



Km: 0.00      Tipo: 3      Sent: 2



Km: 154.00      Tipo: 1      Sent: 0

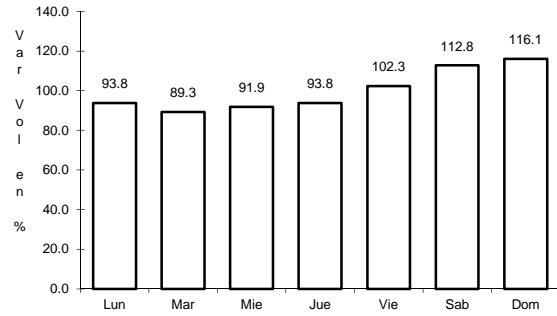




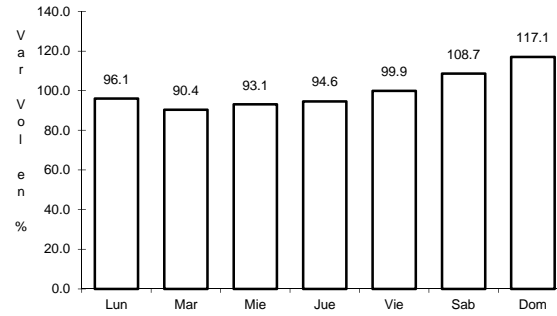
13 CARR: MATAMOROS - PLAYA LAURO VILLAR

CLAVE: 28078

RUTA: MEX-002



Km: 0.00      Tipo: 3      Sent: 1

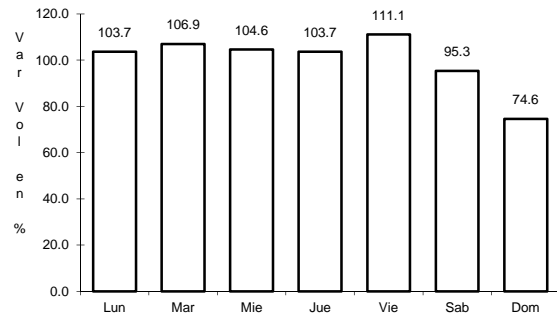


Km: 0.00      Tipo: 3      Sent: 2

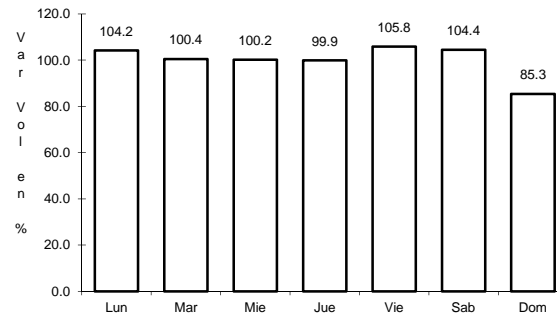
14 CARR: MATAMOROS - REYNOSA

CLAVE: 28077

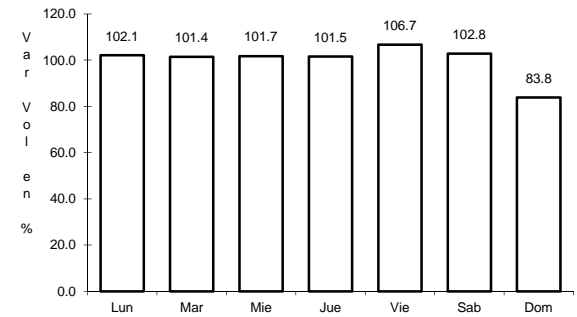
RUTA: MEX-002



Km: 0.00      Tipo: 3      Sent: 0



Km: 98.00      Tipo: 1      Sent: 1

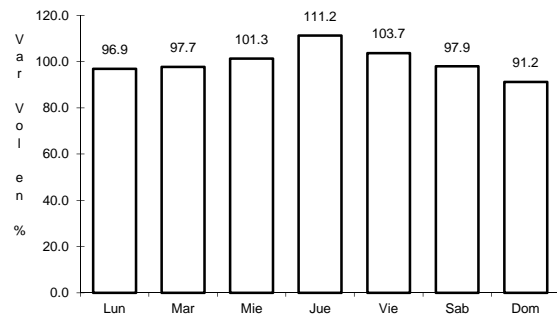


Km: 98.00      Tipo: 1      Sent: 2

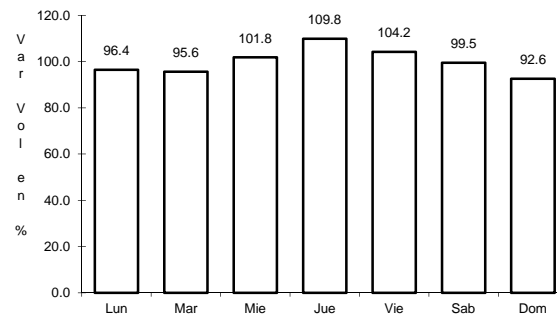
15 CARR: MONTERREY - MIER

CLAVE: 00127

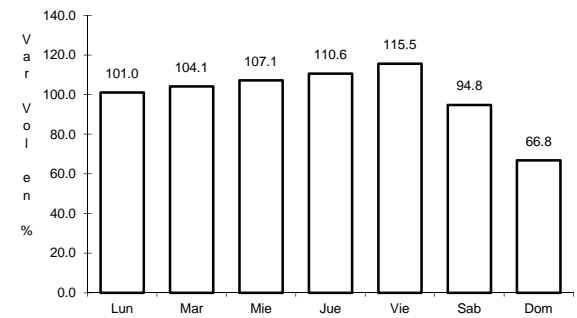
RUTA: MEX-054



Km: 19.12      Tipo: 1      Sent: 1



Km: 19.12      Tipo: 1      Sent: 2

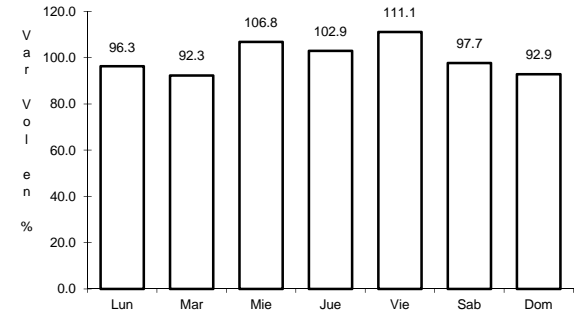
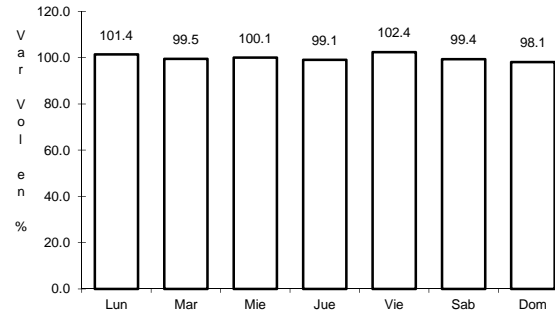
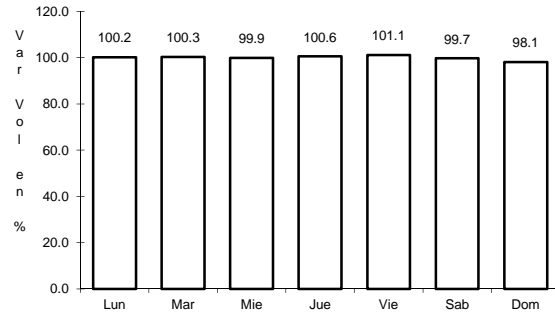


Km: 156.21      Tipo: 1      Sent: 0

16 CARR: MONTERREY - NUEVO LAREDO (LIBRE)

CLAVE: 00463

ruta: MEX-085



Km: 12.10 Tipo: 3 Sent: 1

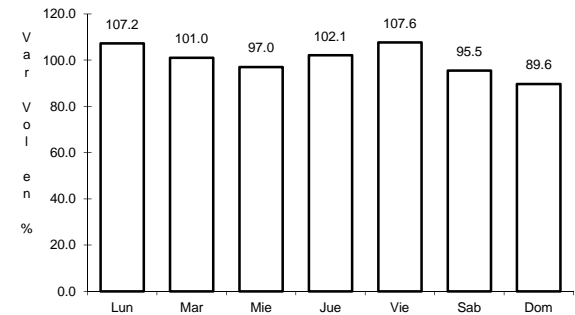
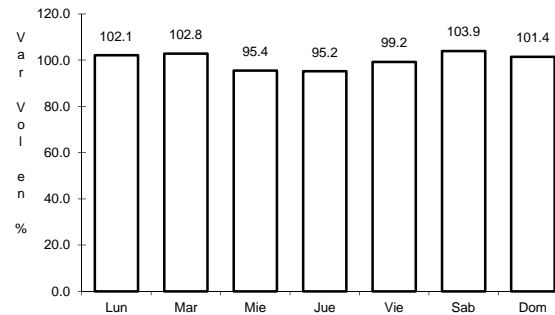
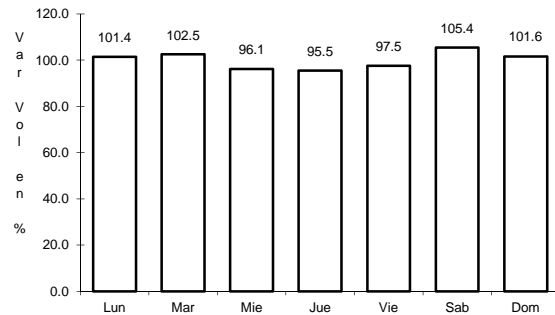
Km: 12.10 Tipo: 3 Sent: 2

Km: 156.80 Tipo: 1 Sent: 0

17 CARR: MONTERREY - REYNOSA (LIBRE)

CLAVE: 00088

ruta: MEX-040



Km: 19.10 Tipo: 1 Sent: 1

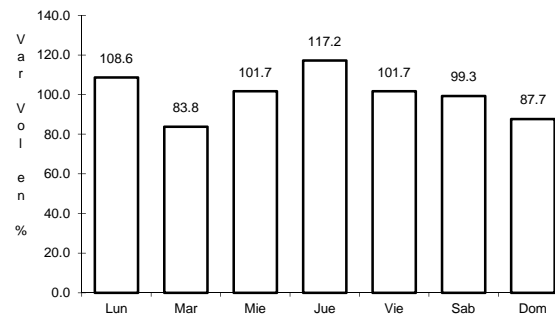
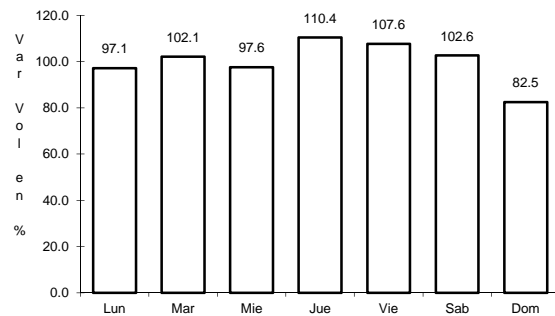
Km: 19.10 Tipo: 1 Sent: 2

Km: 125.00 Tipo: 1 Sent: 0

18 CARR: PARAS - NUEVA CIUDAD GUERRERO

CLAVE: 00476

ruta: MEX-030



Km: 0.00 Tipo: 3 Sent: 0

Km: 32.00 Tipo: 1 Sent: 0

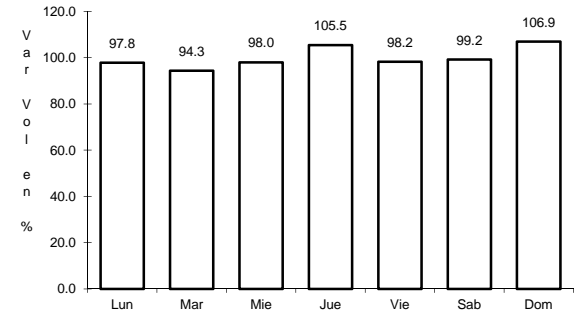
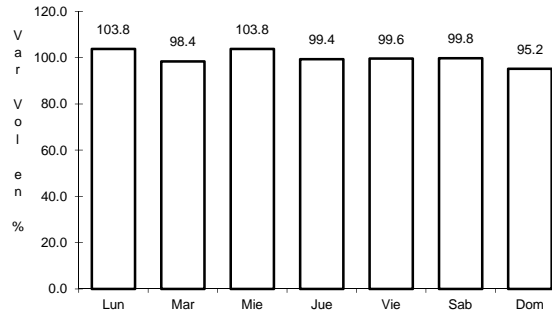
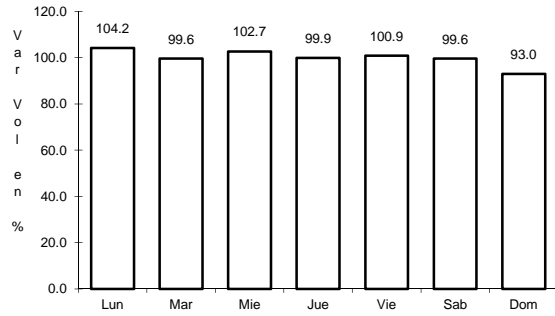




22 CARR: TAMPICO - CD. MANTE

CLAVE: 28163

ruta: MEX-080



Km: 14.79

Tipo: 1

Sent: 1

Km: 14.79

Tipo: 1

Sent: 2

Km: 155.00

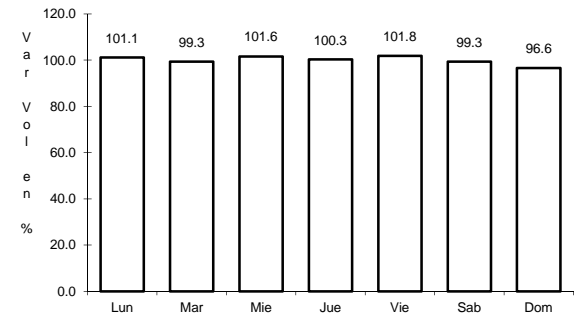
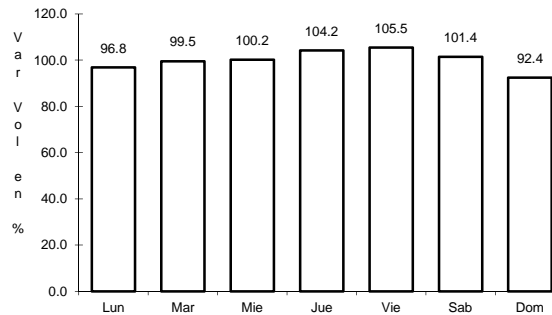
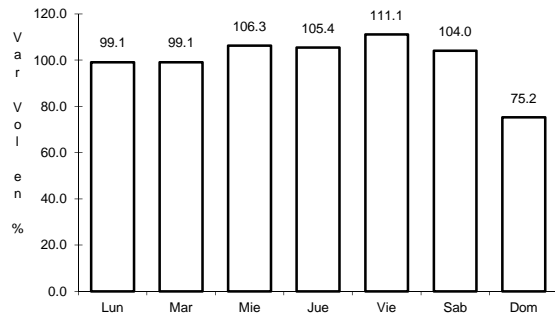
Tipo: 1

Sent: 0

23 CARR: TUXPAM - TAMPICO

CLAVE: 00529

ruta: MEX-180



Km: 0.00

Tipo: 3

Sent: 0

Km: 124.42

Tipo: 1

Sent: 0

Km: 191.43

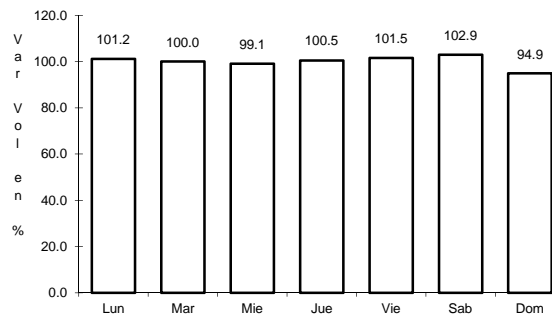
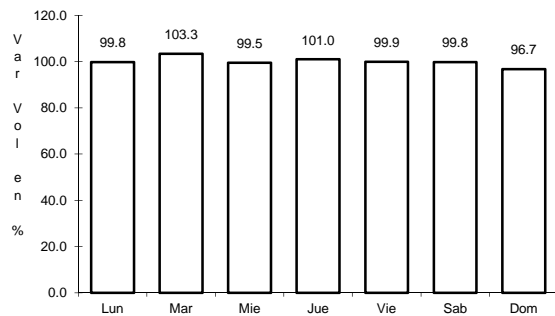
Tipo: 1

Sent: 2

24 CARR: LIBRAMIENTO PONIENTE DE TAMPICO (CUOTA)

CLAVE: 28051

ruta: MEX-184D



Km: 0.00

Tipo: 3

Sent: 0

Km: 12.00

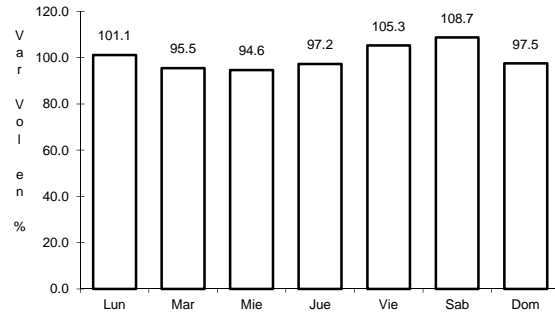
Tipo: 1

Sent: 0

26 CARR: ALDAMA - BARRA EL TORDO

CLAVE: 28620

RUTA: TAM



Km: 0.00

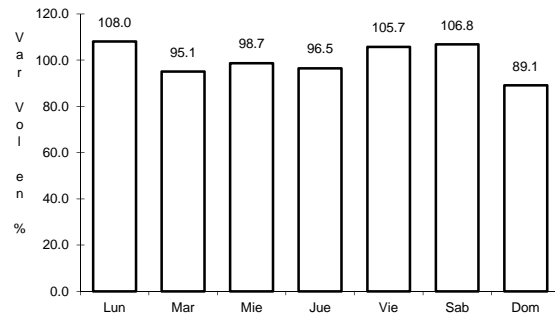
Tipo: 3

Sent: 0

27 CARR: BARRETAL - NUEVA VILLA DE PADILLA

CLAVE: 28001

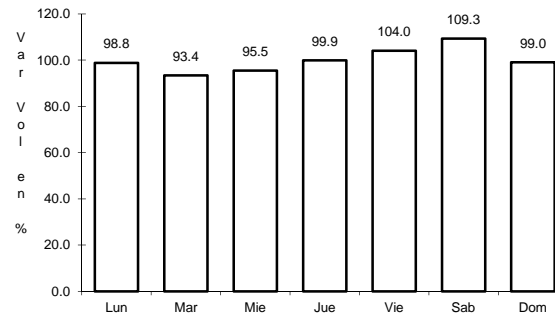
RUTA: TAM-001



Km: 0.00

Tipo: 3

Sent: 0



Km: 24.50

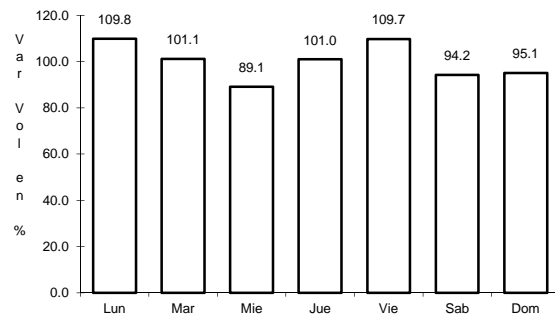
Tipo: 1

Sent: 0

28 CARR: CHINA - MENDEZ

CLAVE: 00191

RUTA: NL-TAM



Km: 0.00

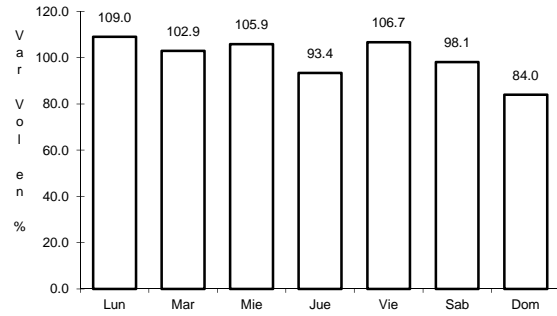
Tipo: 3

Sent: 0

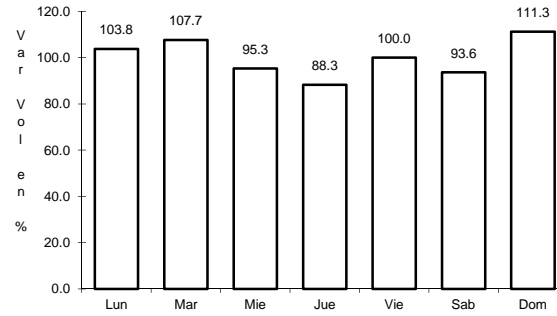
29 CARR: EL LIMON - OCAMPO

CLAVE: 28019

ruta: TAM-019



Km: 0.00      Tipo: 3      Sent: 0

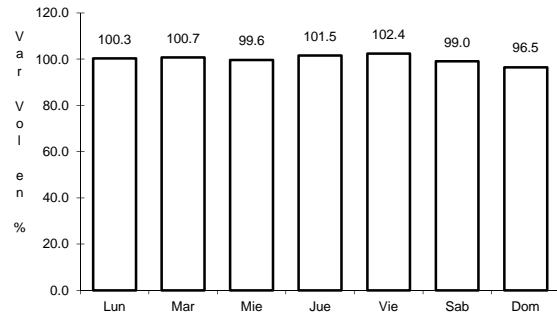


Km: 43.00      Tipo: 1      Sent: 0

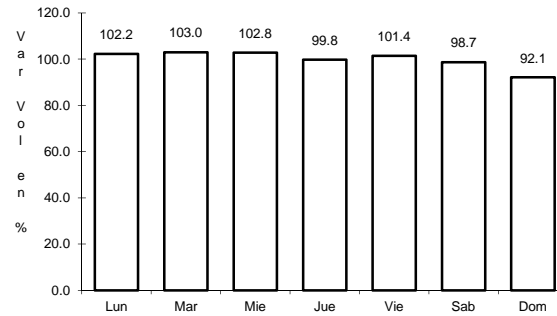
30 CARR: ENT. HUISACHITO - NUEVO LAREDO

CLAVE: 00074

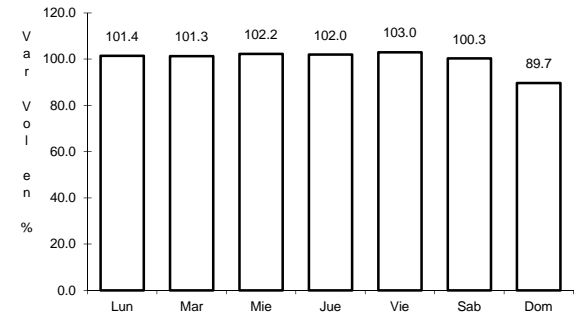
ruta: NL-001-TAM



Km: 0.00      Tipo: 3      Sent: 0



Km: 47.00      Tipo: 1      Sent: 0

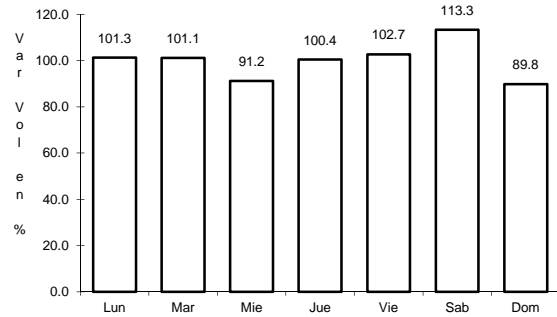


Km: 51.00      Tipo: 1      Sent: 0

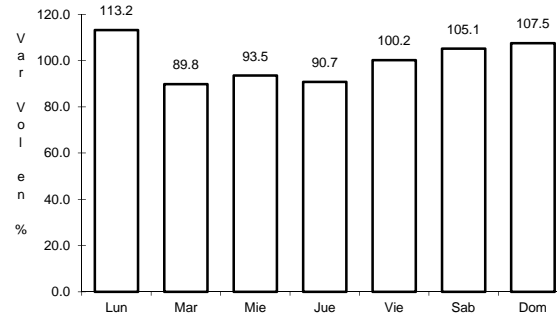
31 CARR: ENT. LAS BLANCAS - RIO BRAVO

CLAVE: 28003

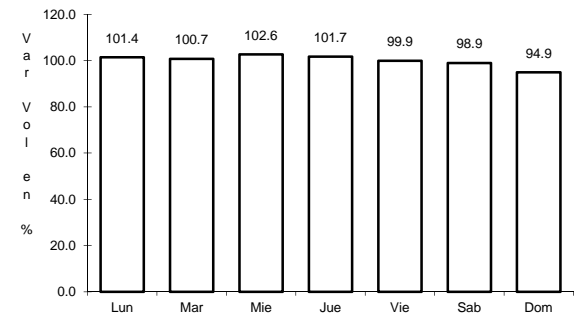
ruta: TAM-003



Km: 0.00      Tipo: 3      Sent: 0



Km: 21.00      Tipo: 1      Sent: 0



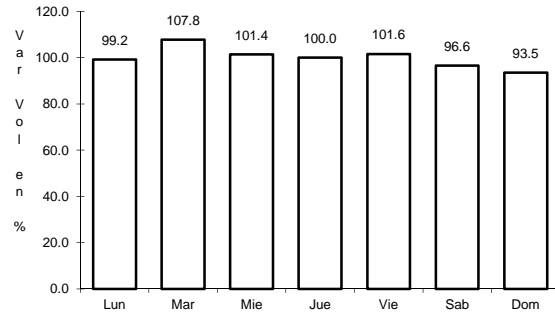
Km: 91.00      Tipo: 1      Sent: 0



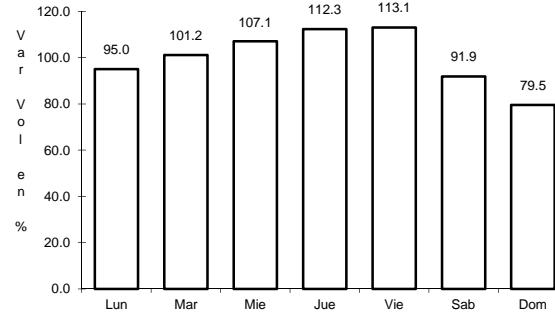
35 CARR: LIBRAMIENTO DE NUEVO LAREDO II

CLAVE: 28626

ruta: TAM



Km: 0.00                      Tipo: 3                      Sent: 0

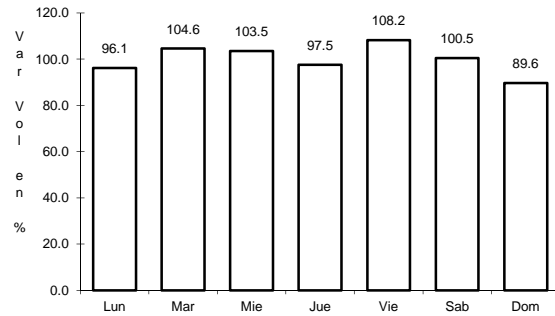


Km: 32.20                      Tipo: 1                      Sent: 0

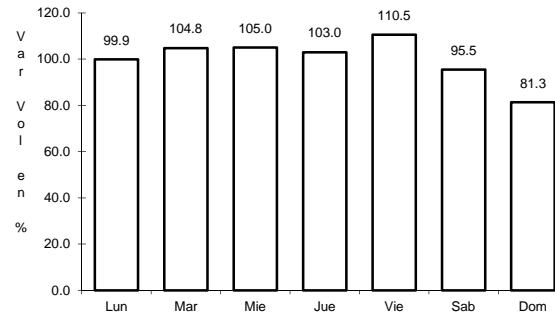
36 CARR: LIBRAMIENTO DE RIO BRAVO

CLAVE: 28002

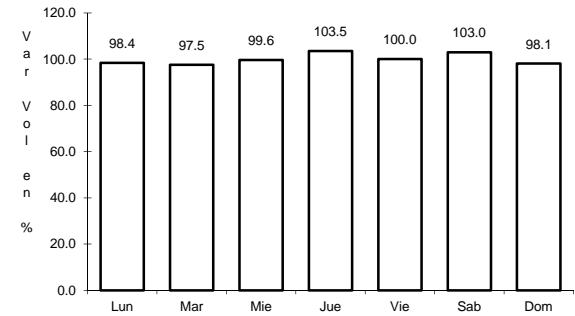
ruta: TAM



Km: 0.00                      Tipo: 3                      Sent: 1



Km: 0.00                      Tipo: 3                      Sent: 2

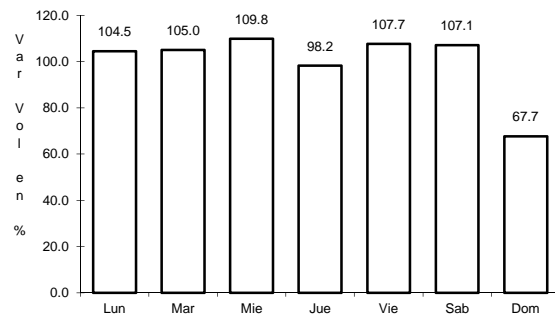


Km: 13.10                      Tipo: 1                      Sent: 1

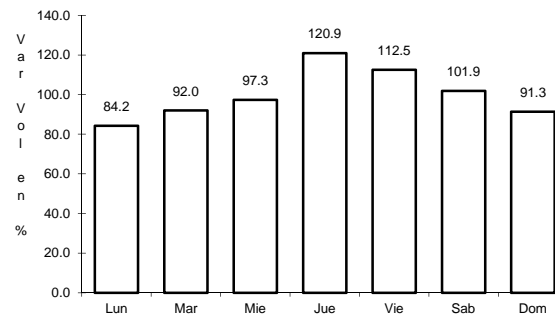
37 CARR: LOS GUERRA - LOS HERRERAS

CLAVE:

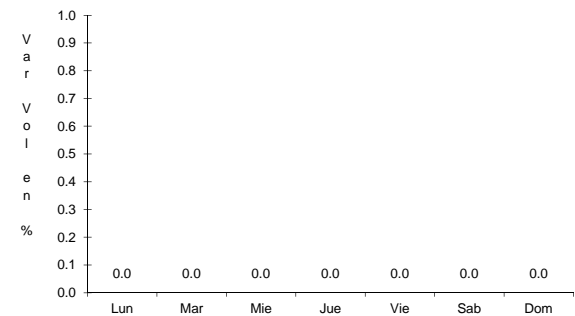
ruta: TAM-NL



Km: 0.00                      Tipo: 3                      Sent: 0



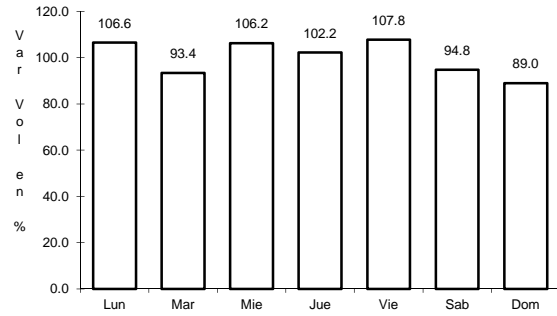
Km: 73.00                      Tipo: 1                      Sent: 0



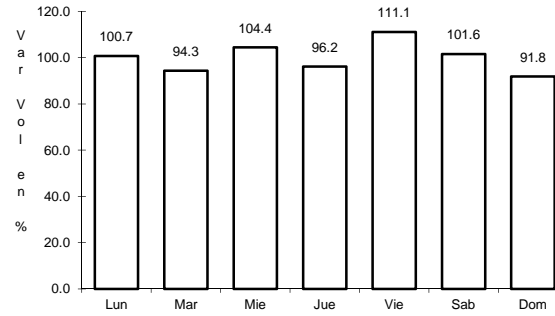
38 CARR: PEÑA BLANCA - CD. CAMARGO

CLAVE: 00102

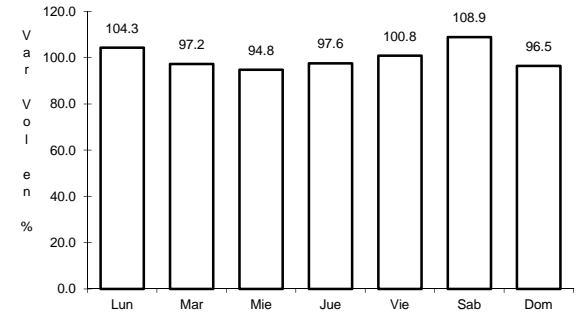
RUTA: NL-TAM



Km: 0.00      Tipo: 3      Sent: 0



Km: 40.00      Tipo: 3      Sent: 0

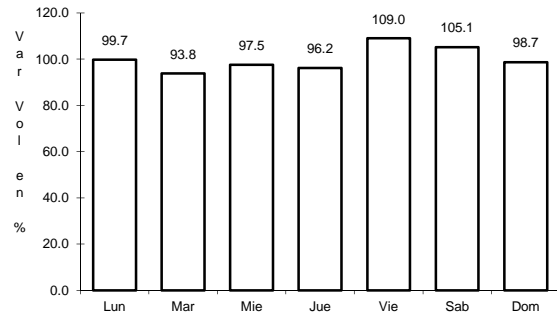


Km: 65.00      Tipo: 1      Sent: 0

39 CARR: POTRERO NUEVO - RANCHO EL MEZQUITAL

CLAVE: 28615

RUTA: TAM

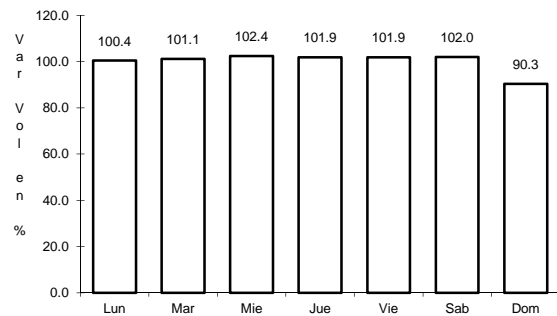


Km: 0.00      Tipo: 3      Sent: 0

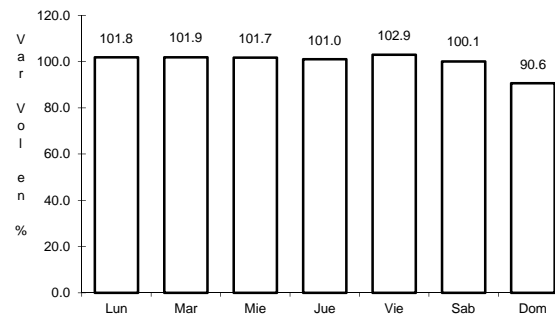
40 CARR: RAMAL A GOMEZ FARIAS

CLAVE: 28020

RUTA: TAM-020



Km: 0.00      Tipo: 3      Sent: 0



Km: 11.00      Tipo: 1      Sent: 0

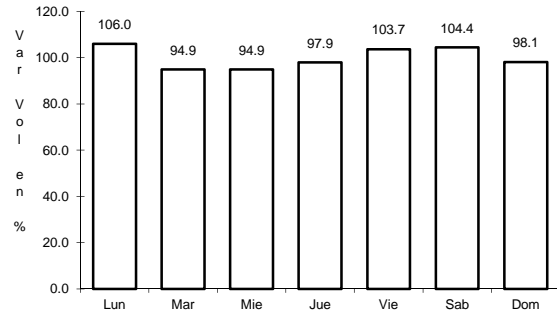




44 CARR: T. C. (VALLE HERMOSO - EMPALME) - MATAMOROS

CLAVE: 28005

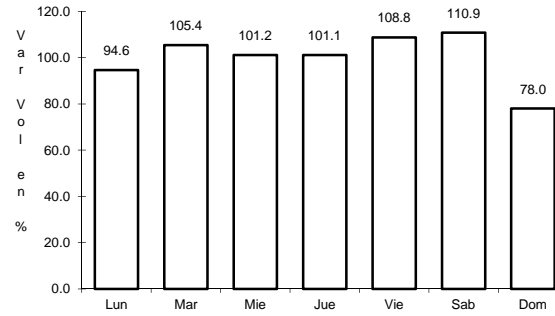
ruta: TAM-005



Km: 0.00

Tipo: 3

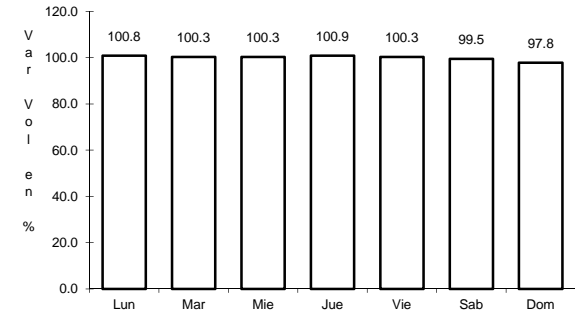
Sent: 0



Km: 2.00

Tipo: 3

Sent: 0



Km: 33.90

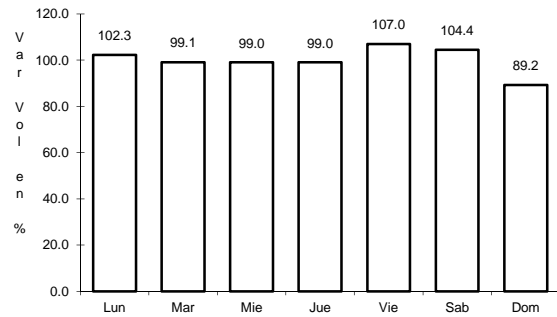
Tipo: 1

Sent: 0

45 CARR: VALLE HERMOSO - EMPALME

CLAVE: 28004

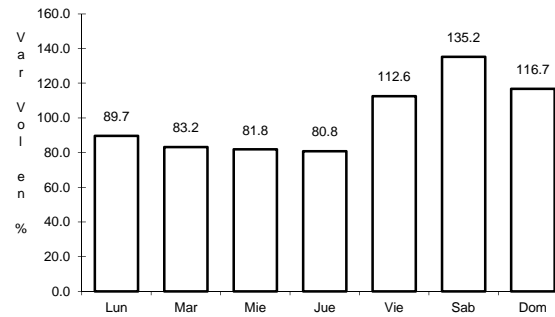
ruta: TAM-004



Km: 0.00

Tipo: 3

Sent: 0



Km: 28.38

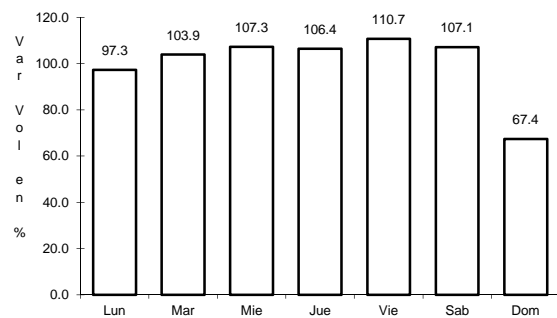
Tipo: 1

Sent: 0

46 CARR: VALLE HERMOSO - LAS YESCAS

CLAVE: 28614

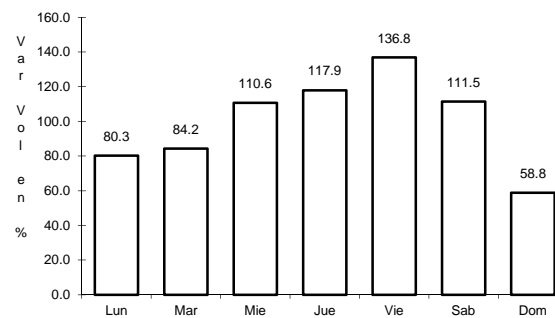
ruta: TAM



Km: 0.00

Tipo: 3

Sent: 0

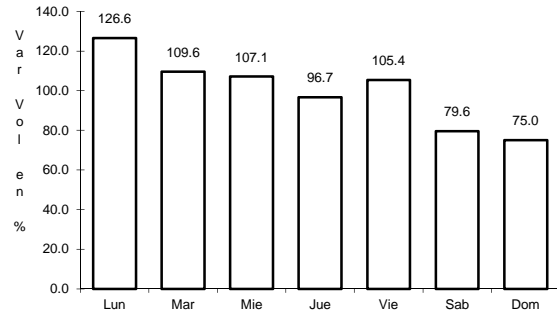


Km: 26.00

Tipo: 1

Sent: 0

47 CARR: SANTANDER JIMENEZ - ENT. EL OJITO

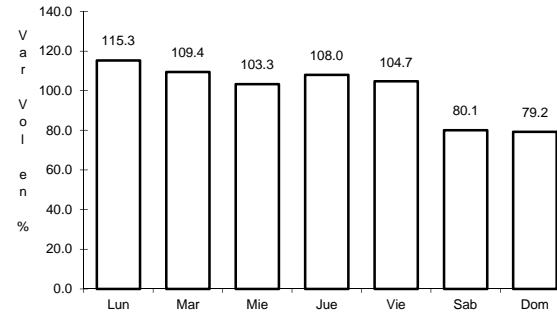


Km: 0.00

Tipo: 3

Sent: 0

CLAVE: 28579

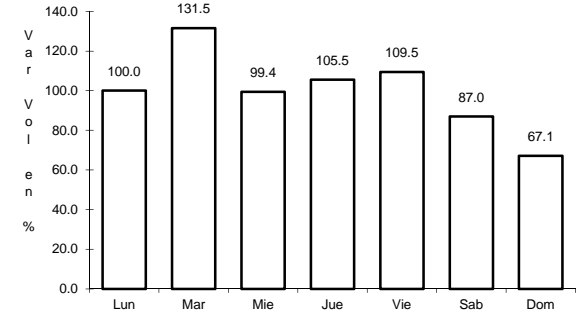


Km: 20.00

Tipo: 1

Sent: 0

RUTA: MEX-107-TAM



Km: 58.00

Tipo: 1

Sent: 0