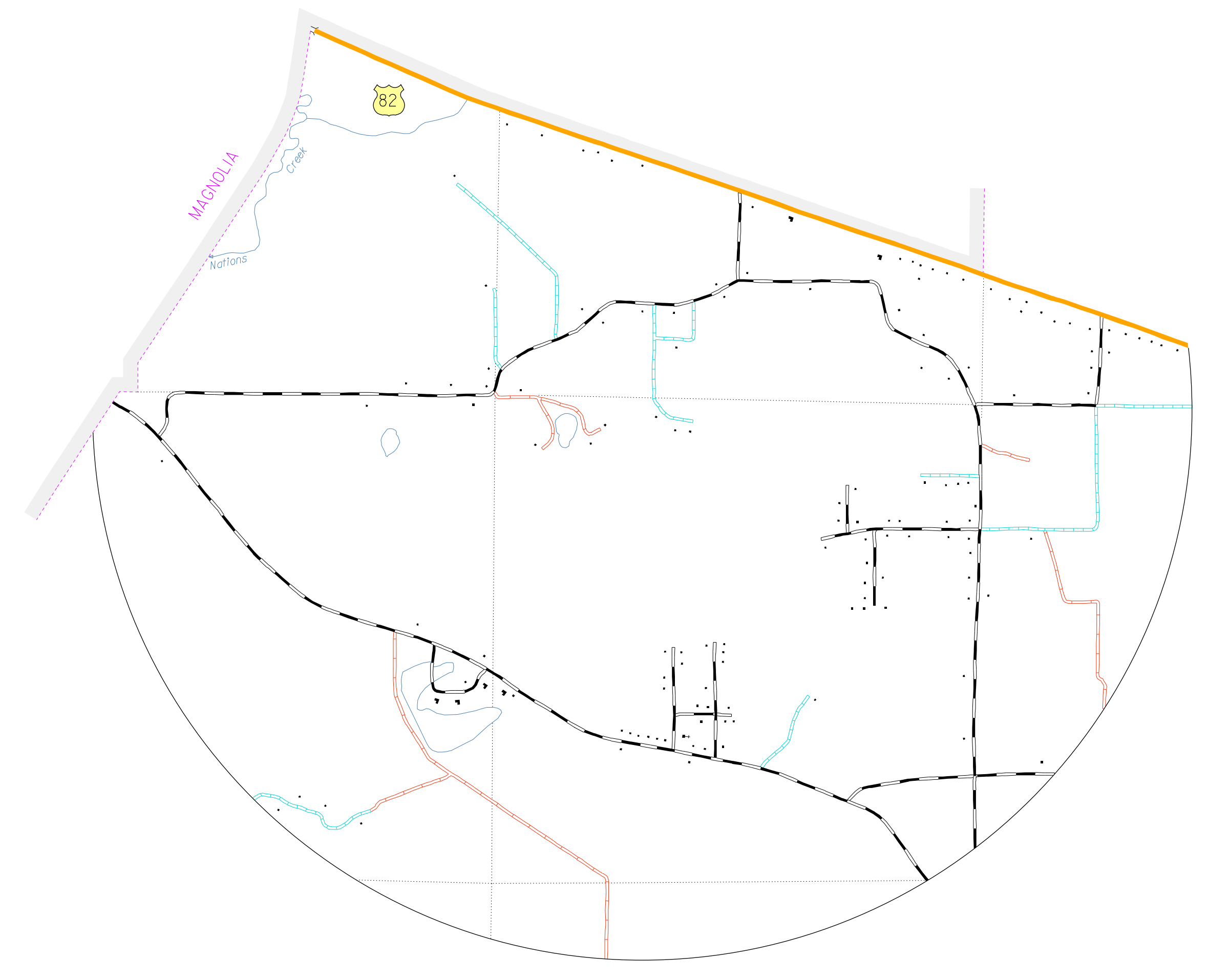
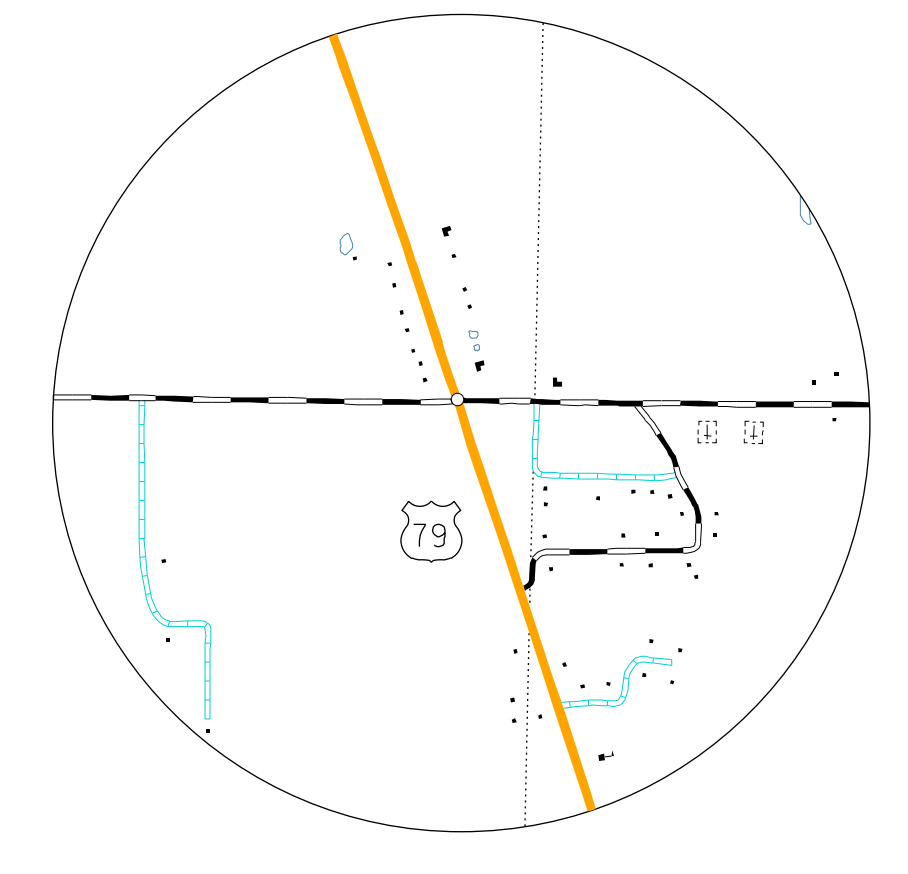


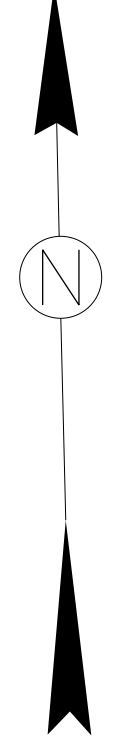
- LEGEND**
- STATE BOUNDARY
 - COUNTY BOUNDARY
 - U. S. TOWNSHIP LINE
 - LAND SECTION LINE
 - PARK OR RESERVATION BOUNDARY
 - PAVED STATE OR U.S. HIGHWAY
 - U.S. NUMBERED HIGHWAY
 - STATE HIGHWAY
 - PAVED LOCAL ROAD
 - GRAVEL LOCAL ROAD
 - GRADED & DRAINED LOCAL ROAD
 - UNIMPROVED LOCAL ROAD
 - RAILROAD - 4' SHOE OPERATING COMPANY
 - RAILROAD - STATION
 - GRADE CROSSING
 - OVERPASS
 - UNDERPASS
 - HIGHWAY BRIDGE - 100 FEET OR MORE IN LENGTH
 - MELEGE BETWEEN POINTS
 - U.S.
 - LAKE, RESERVOIR OR POND
 - LAKE, RESERVOIR OR POND WITH DAM
 - MARSH OR SWAMP
 - WIDE RIVER OR STREAM
 - DOCK, PIER OR LANDING
 - SMALL STREAM
 - DRAINAGE DITCH
 - CORPORATE LIMITS AND ROADS THROUGH TOWN
 - COUNTY SEAT
 - OTHER CITIES AND TOWNS
 - MUNICIPAL AIRPORT
 - PRIVATE AIRFIELD
 - FARM UNIT OR DWELLING
 - GROUP OF CLOSELY SPACED DWELLINGS - 1/4" OR MORE SPACING
 - CHURCH OR OTHER RELIGIOUS INSTITUTION
 - SCHOOL
 - POST OFFICE - POST OFFICE AND BUSINESS
 - CEMETERY
 - CHURCH WITH CEMETERY ADJACENT
 - BUSINESS ESTABLISHMENT
 - FACTORY OR INDUSTRIAL PLANT - COTTON GIN
 - SAMMILL
 - OIL TANK
 - GRAVEL PIT
 - QUARRY
 - TOWN OR COMMUNITY HALL
 - RADIO OR TELEVISION STATION AND CALL LETTERS
 - FOREST RANGER STATION
 - POWER SUBSTATION
 - TRAILER PARK
 - PUMPING STATION, OIL OR GAS
 - GOLF COURSE OR COUNTRY CLUB
 - ATHLETIC FIELD OR AMUSEMENT PARK
 - SMALL PARK - 1/4" OR MORE SPACING
 - WATER SUPPLY STANDPIPE OR TANK
 - SEWAGE DISPOSAL PLANT
 - GARBAGE DUMP OR SANITARY LANDFILL
 - AUTO SALVAGE YARD
 - SCRAP METAL JUNK YARD
 - FARNGROUND, RACE COURSE OR SPEEDWAY
 - RODEO ARENA
 - CHICKEN HOUSE OR OTHER LIVESTOCK
 - NURSERY
 - SCENIC HIGHWAY



INSET NO. 1
Sec. 16, 17, 18, 19, 20, 21, 29, 30, T. 17 S., R. 20 W.

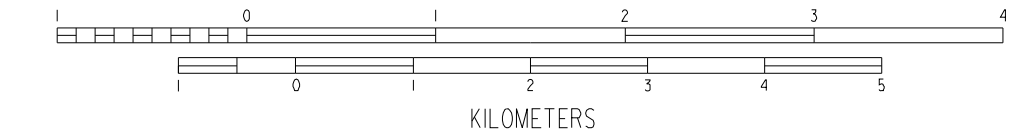


WALKER
Sec. 30, T. 17 S., R. 20 W.
Sec. 25, T. 17 S., R. 21 W.

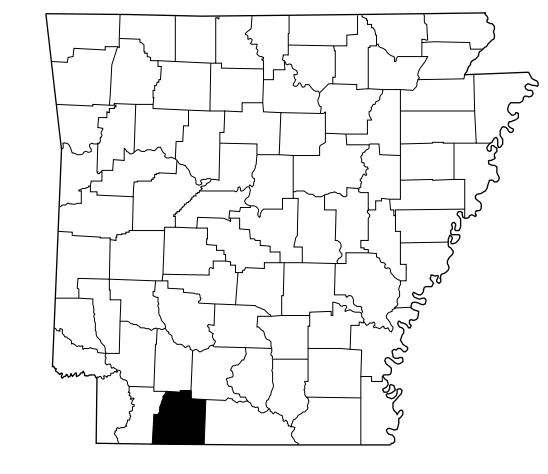


GENERAL HIGHWAY MAP COLUMBIA COUNTY ARKANSAS

PREPARED BY
ARKANSAS STATE HIGHWAY AND TRANSPORTATION DEPARTMENT
PLANNING AND RESEARCH DIVISION
IN COOPERATION WITH
U.S. DEPARTMENT OF TRANSPORTATION
FEDERAL HIGHWAY ADMINISTRATION
SCALE 1:62,500
MILES
KILOMETERS



Copies of this map are available at a nominal fee from the Arkansas State Highway and Transportation Department, P.O. Box 2291 Little Rock, Ark. 72203



NOTE: Enlargements of all congested areas are five times map scale unless otherwise noted.
Individual maps are available for all active incorporated cities.
Area 74,394 square miles.
Population 2,645,200 Census
Map issued 03-01-84, replaces map issued 06-17-78
Field Inventory 1975
Map revisions made from aerial photographs taken 04-08-00
Map compilation completed 01-31-04
County map produced using Computer Assisted Cartography.
Map Revised 07-31-07, added Falcon Bottoms Natural Area boundary and 416 USN
Map Revised 02-24-02, changed the city limits on the East side of the city, I-49
Map Revised 4-27-06, city limit change in Magnolia, LA.