

419 House Sparrow



House Sparrow. Spring. Male (23-IV).

HOUSE SPARROW (*Passer domesticus*)

IDENTIFICATION

14-15 cm. General dun coloration, with chestnut upperparts and grey-brown underparts. **Male** with chestnut head and grey crown; black bib. **Female** grey-brown, with pale supercilium.

SIMILAR SPECIES

The **male** recalls a **Tree Sparrow**, which is smaller, has black cheek and lacks grey on head. **Female** looks like a female **Chaffinch**, with white on shoulders and tail.



Tree Sparrow.



Chaffinch. Female

SEXING

Male with chestnut and grey head, black bib and intense chestnut on lesser coverts. **Female** with duller aspect, lacks black on throat and breast and lesser coverts are light brown. Some **juvenile males** are recognized before moult because they have a dark patch on throat, but some with light throat like **females**.

AGEING

2 types of age can be recognized:

Juvenile similar to a **female**, but with fresh plumage.

Adult with worn plumage.

After the **postbreeding/postjuvenile** moult, ageing is not possible using plumage characters.

MOULT

Complete **postbreeding** and **postjuvenile** moult, usually finished early November.

PHENOLOGY

I	II	III	IV	V	VI	VII	VIII	IX	X	XI	XII

STATUS IN ARAGÓN

Resident, absent only from places without human activity.

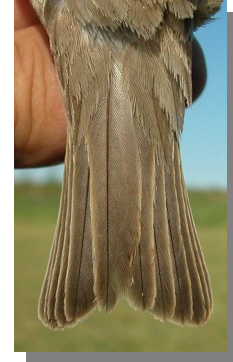


House Sparrow. Spring. Female (23-IV).

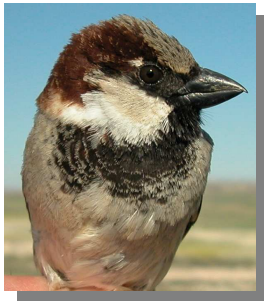
419 House Sparrow



House Sparrow. Spring. Head pattern: top male (23-IV); bottom female (23-IV).



House Sparrow. Spring. Pattern and wear of tail: left male (23-IV); right female (23-IV).



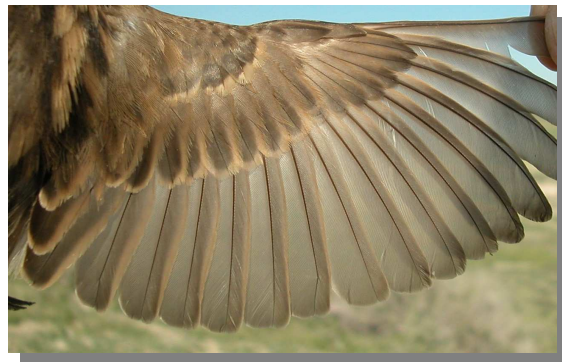
House Sparrow. Spring. Breast pattern: left male (23-IV); right female (23-IV).



House Sparrow. Spring. Male: pattern of wing (23-IV)



House Sparrow. Spring. Upperpart pattern: left male (23-IV); right female (23-IV).



House Sparrow. Spring. Female: pattern of wing (23-IV)

419 House Sparrow



House Sparrow. Summer. Adult. Male (27-VI).



House Sparrow. Summer. Juvenile. Male/female (19-VI).



House Sparrow. Summer. Adult. Female (04-VII).



House Sparrow. Summer. Adult. Head pattern: top male (27-VI); bottom female (04-VII).

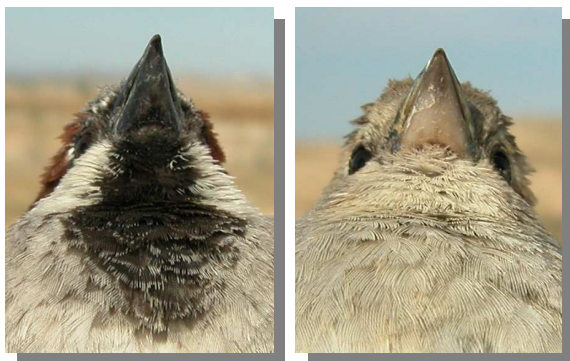


House Sparrow. Summer. Juvenile. Male (19-VI).



House Sparrow. Summer. Juvenile. Head pattern: top male (19-VI); bottom male/female (28-VI).

419 House Sparrow



House Sparrow. Summer. Adult. Chin pattern: left male (27-VI); right female (04-VII).



House Sparrow. Summer. Juvenile. Breast pattern: left male (19-VI); right male/female (28-VI).



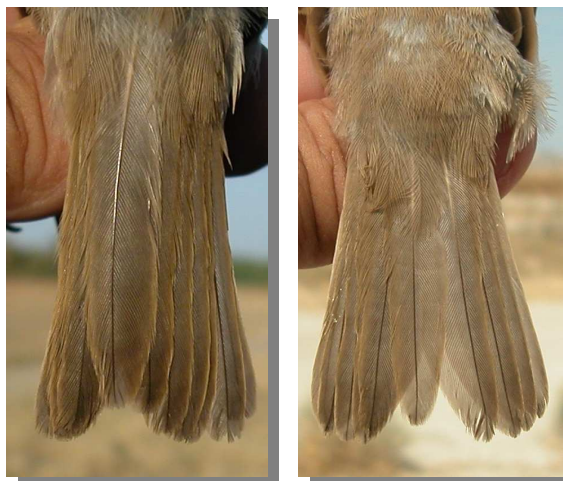
House Sparrow. Summer. Juvenile. Chin pattern: left male (19-VI); right male/female (28-VI).



House Sparrow. Summer. Adult. Pattern and wear of tail: left male (27-VI); right female (04-VII).



House Sparrow. Summer. Adult. Breast pattern: left male (27-VI); right female (04-VII).



House Sparrow. Summer. Juvenile. Pattern and wear of tail: left male (19-VI); right male/female (28-VI).

419 House Sparrow



House Sparrow. Summer. Adult. Male: pattern and wear of wing (27-VI).

House Sparrow. Summer. Adult. Upperpart pattern: left male (27-VI); right female (04-VII).



House Sparrow. Summer. Adult. Female: pattern and wear of wing (04-VII).



House Sparrow. Summer. Juvenile. Male: pattern and wear of wing (19-VI).

House Sparrow. Summer. Juvenile. Upperpart pattern: left male (19-VI); right male/female (28-VI).



House Sparrow. Summer. Juvenile. Male/female: pattern and wear of wing (28-VI).

419 House Sparrow



House Sparrow. Winter. Male (22-X).



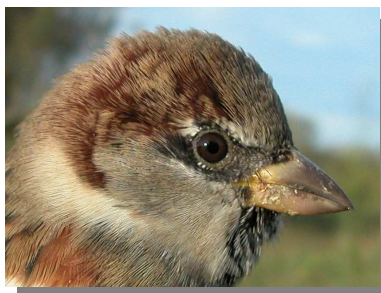
House Sparrow. Winter. Breast pattern: left male (22-X); right female (22-X).



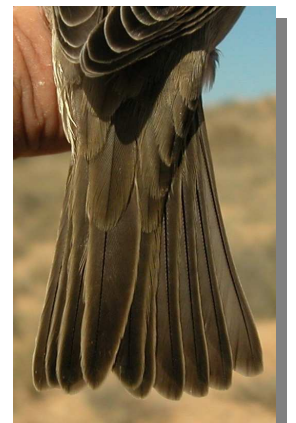
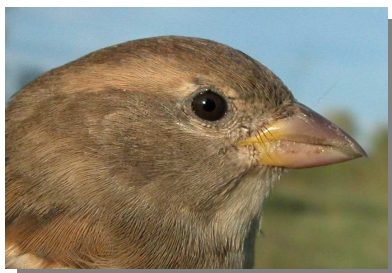
House Sparrow. Winter. Female (22-X).



House Sparrow. Winter. Upperpart pattern: left male (22-X); right female (22-X).

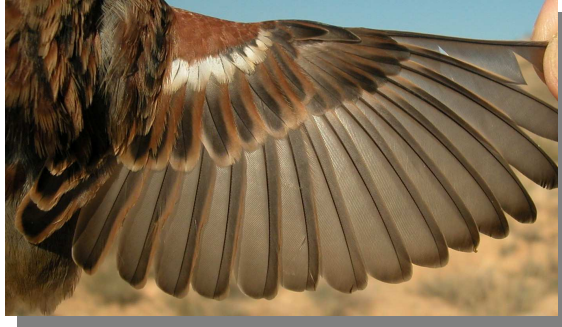


House Sparrow. Winter. Head pattern: top male (22-X); bottom female (22-X).



House Sparrow. Winter. Pattern and wear of tail: left male (22-X); right female (22-X).

419 House Sparrow



House Sparrow. Winter. Male: pattern of wing (22-X).



House Sparrow. Winter. Female: pattern of wing (22-X).