

414 Carrion Crow



Carrion Crow. Adult (20-X).

CARRION CROW (*Corvus corone*)

IDENTIFICATION

43-47 cm. Black plumage; rounded tail; black bill and legs.

SIMILAR SPECIES

This species recalls that of **Raven**, which has a bigger size (51-63 cm) and edge of tail is wedge-shaped.



Raven

AGEING

3 types of age can be recognized:

Juvenile with fresh plumage; duller black feathers; inside of upper mandible pinkish.

1st year autumn/2nd year spring with moult limit between moulted glossy body feathers and lesser coverts and duller juvenile feathers on wing and tail; worn flight and tail feathers; inside of upper mandible with pinkish areas.

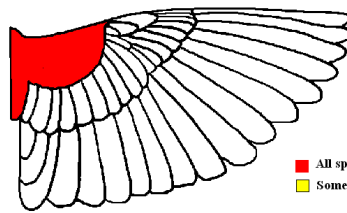
Adult with glossy black plumage on wing and tail, without moult limits; inside of upper mandible dark.

SEXING

Plumage of both sexes alike. Size can be helpful with extreme specimens: **male** with wing longer than 335 mm; **female** with wing shorter than 300 mm.

MOULT

Complete **postbreeding** moult, usually finished early November. Partial **postjuvenile** moult, mostly confined to body feathers and lesser coverts; finished in October.



Carrion Crow. Extent of postjuvenile moult.

■ All specimens
■ Some specimens

PHENOLOGY

I	II	III	IV	V	VI	VII	VIII	IX	X	XI	XII

STATUS IN ARAGÓN

Resident. Widely distributed throughout the Region, absent from the highest mountains and the deforested areas of the Ebro Basin.

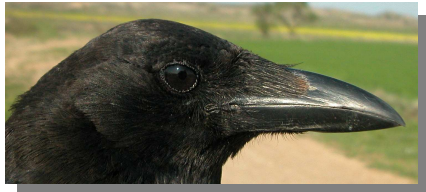


Carrion Crow. Juvenile (01-VII)

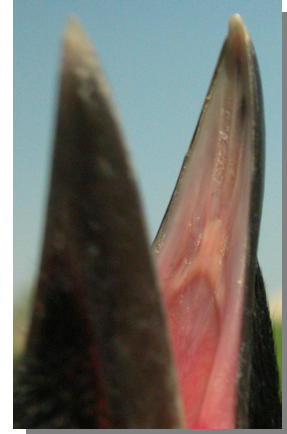


Carrion Crow. 2nd year (15-IV)

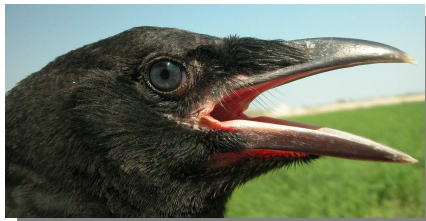
414 Carrion Crow



Carrion Crow. Iris colour: top adult (20-X); bottom 2nd year (15-IV).



Carrion Crow. Inside of upper mandible: left juvenile (01-VII); right young (12-VI).



Carrion Crow. Iris colour: top juvenile (01-VII); bottom young (12-VI).



Carrion Crow. Inside of upper mandible: left adult (22-V); right 2nd year (18-II)

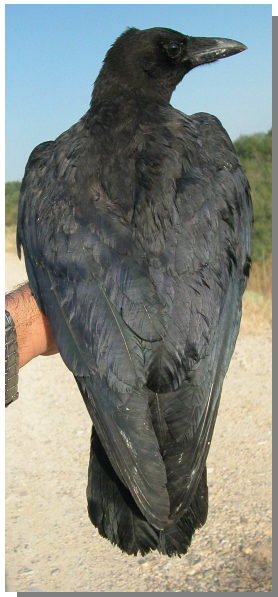


Carrion Crow. Tail pattern: top left adult (31-III); top right 2nd year (15-IV); left juvenile (01-VII).

414 Carrion Crow



Carrion Crow. 2nd year: pattern of alula (15-IV).



Carrion Crow. Upperpart pattern: top left adult (31-III); top right 2nd year (15-IV); left juvenile (01-VII).



Carrion Crow. Juvenile: pattern of alula (01-VII).



Carrion Crow. Adult: pattern of wing (20-X).



Carrion Crow. Adult: pattern of alula (20-X).



Carrion Crow. 2nd year: pattern of wing (15-IV).

414 Carrion Crow



Carrion Crow. Juvenile: pattern of wing (01-VII).