

# 336 Wheatear



Wheatear. Spring. Adult. Male (01-V).

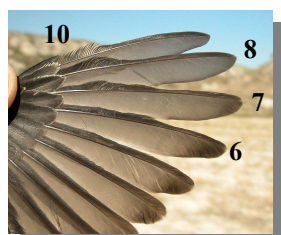
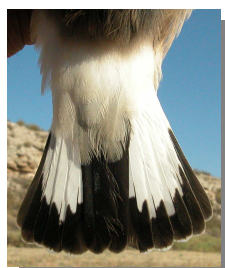
## WHEATEAR (*Oenanthe oenanthe*)

### IDENTIFICATION

14-15 cm. **Male** with grey upperparts; black wings; white forehead and black bands on both sides of the head; white underparts. **Female** with brown grey upperparts; brown wings; rufous underparts. Both sexes with central tail feathers black and dark terminal band; 10th primary similar or shorter than primary coverts; 7th to 8th primaries emarginated.

### SIMILAR SPECIES

**Male** is unmistakable. **Female** recalls a **Black-eared Wheatear**, with band on tail feathers broader on sides; 10th primary longer than primary coverts; 6th to 8th primaries emarginated.



Black-eared Wheatear: female, wing formula and tail pattern

### SEXING

**Male** with black ear coverts; white supercilium; flight feathers and wing covers black. **Female** with brown ear coverts; pale supercilium; flight feathers and wing covers brown. **Juveniles** and **1st year** cannot be sexed using plumage characters.

**CAUTION: 1st year birds** and **females** are similar, so it is necessary to check moult limits and inside of upper mandible for a right ageing.

### AGEING

3 types of age can be recognized:

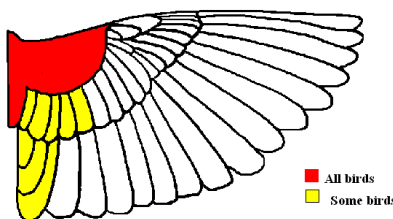
**Juvenile** with fresh plumage; inside of upper mandible yellow.

**1st year autumn/2nd year spring** with moult limit on wing feathers, sometimes difficult to see due to few feathers involved; some birds still with yellow colour inside of upper mandible.

**Adult** without moult limit on wing feathers; dark colour inside of upper mandible.

### MOULT

Complete **postbreeding** moult, usually finished early September. Partial **postjuvenile** moult including body feathers and lesser and median coverts, some birds moult tertials and inner greater coverts; finished in early October. Both types of age have a **prebreeding** moult including body feathers and sometimes wing coverts.



Wheatear. Extent of postjuvenile moult.

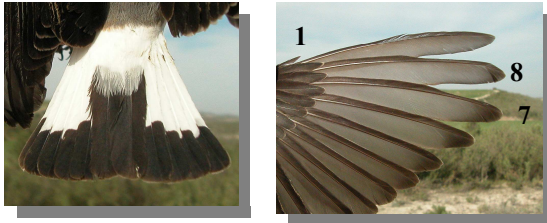
### PHENOLOGY

I	II	III	IV	V	VI	VII	VIII	IX	X	XI	XII

### STATUS IN ARAGON

Summer visitor. Widely distributed throughout the Region, absent in the arid Ebro Basin.

**336 Wheatear**



Wheatear. Tail pattern and wing formula



Wheatear. Spring. Juvenile (22-VI)



Wheatear. Spring. Adult. Female (03-IV).



Wheatear. Spring. Adult. Head pattern: top male (01-V); bottom female (03-IV).



Wheatear. Spring. 2nd year. Male (20-VI).



Wheatear. Spring. Head pattern: top 2nd year male (20-VI); middle 2nd year female (20-VI); bottom juvenile (16-VII).



Wheatear. Spring. 2nd year. Female (20-VI).





# 336 Wheatear



Wheatear. Spring. Adult. Breast pattern: left male (01-V); right female (03-IV).



Wheatear. Spring. Upperparts pattern: top left 2nd year male (20-VI); top right 2nd year female (20-VI); left juvenile (16-VII).



Wheatear. Spring. Upperparts pattern: top left 2nd year male (20-VI); top right 2nd year female (20-VI); left juvenile (16-VII).



Wheatear. Spring. Adult. Upperparts pattern: left male (01-V); right female (03-IV).



Wheatear. Spring. Adult. Tail pattern: left male (01-V); right female (03-IV).



# 336 Wheatear



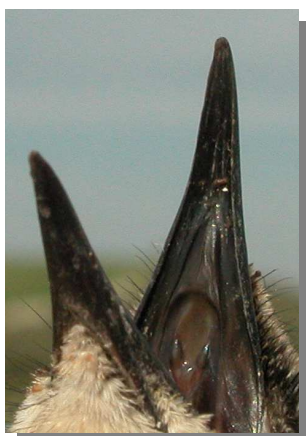
Wheatear. Spring. Adult. Male: pattern of wing (28-IV).



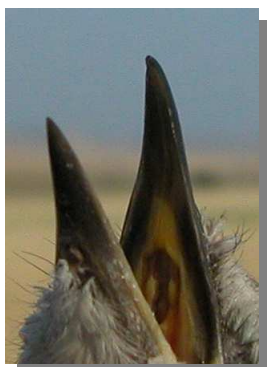
Wheatear. Spring. Tail pattern: top left 2nd year male (20-VI); top right 2nd year female (20-VI); left juvenile (16-VII).



Wheatear. Spring. Adult. Female: pattern of wing (03-IV).



Wheatear. Spring. 2nd year. Male: pattern of wing (20-VI).



Wheatear. Spring. Colour inside of upper mandible: top left adult/2nd year (14-IV); top right 2nd year (14-IV); left juvenile (16-VII)..



Wheatear. Spring. 2nd year. Female: pattern of wing (20-VI).



# 336 Wheatear



Wheatear. Wheatear. Spring. Juvenile: pattern of wing (22-VI).



Wheatear. Autumn. 1st year (02-IX)



Wheatear. Autumn. Adult. Male (02-IX)



Wheatear. Autumn. Head pattern: top adult male (02-IX); middle adult female (02-IX); bottom 1st year (02-IX).



Wheatear. Autumn. Adult. Female (02-IX)



**336 Wheatear**



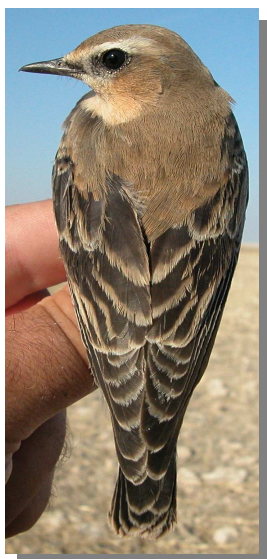
Wheatear. Autumn. Breast pattern: top left adult male (02-IX); top right adult female (02-IX); left 1st year (02-IX).



Wheatear. Autumn. Colour inside of upper mandible: left adult (02-IX); right 1st year (02-IX).



Wheatear. Autumn. Tail wear: left adult (02-IX); right 1st year (02-IX).



Wheatear. Autumn. Upperparts pattern: top left adult male (02-IX); top right adult female (02-IX); left 1st year (02-IX).



Wheatear. Autumn. Adult. Male: pattern of wing (02-IX).

## 336 Wheatear



Wheatear. Autumn. Adult. Female: pattern of wing (02-IX).



Wheatear. Autumn. 1st year: pattern of wing (02-IX).