

WŁOCLAWEK

WŁOCLAWEK



www.wloclawek.pl/strefa

Włocławek Economic Development Zone – Industry and Technology Park (VSRG-PPT)

WŁOCLAWEK TOWN HALL

Business Initiative and Promotion Department

Zielony Rynek 11/13, 87-800 Włocławek (PL)

tel.: 054 414 42 30, fax 054 411 36 00

mail: przedsiębiorczosc@um.wloclawek.pl

City of new opportunities...



PROGRAM REGIONALNY
NARODOWA STRATEGIA SPÓJNOŚCI



WOJEWÓDZTWO
KUJAWSKO-POMORSKIE

UNIA EUROPEJSKA
EUROPEJSKI FUNDUSZ
ROZWOJU REGIONALNEGO



PUBLIKACJA JEST WSPÓŁFINANSOWANA ZE ŚRODKÓW EUROPEJSKIEGO FUNDUSZU ROZWOJU REGIONALNEGO ORAZ ZE ŚRODKÓW WOJEWÓDZTWA KUJAWSKO-POMORSKIEGO W RAMACH REGIONALNEGO PROGRAMU OPERACYJNEGO WOJEWÓDZTWA KUJAWSKO-POMORSKIEGO NA LATA 2007-2013.



WŁOCLAWEK
 Vladislavia (Latin), Leslau (German)
 – capital of Kuyavian area

The origins of today's Włocławek go back to the tenth century BC - there was a settlement here of the Lusatian culture. This is one of the most important cities of Kujawy – a geographical and historical land, because of the extremely fertile soil it is called it is called the 'Polish granary'. Through the Castle led an important route from Wielkopolska to Dobrzyń and Płock. The oldest princely castle had been founded here at the turn of the tenth and eleventh centuries. According to 'The Polish Chronicles' Gallus Anonymus, the chronicler of King Bolesław I the Brave, resided here with a large team of Castellan chivalrous. The city is the home of the administrative and ecclesiastical authority (bishop capital). In 1255 Duke Casimir I of Kujawy located a city here based on the Magdeburg law and in 1339 it was located again, this time on Chelmino's law.

The golden period in the history of the city was the sixteenth century, when Włocławek became the second center after Gdansk in grain trade on the territories of the 1st Republic of Poland – at the time there were 27 granaries, a customs chamber and a modern port. The citizens had there own river flotilla rafting goods to the sea. Wars of the seventeenth century, completed the first period of prosperity of the city. From 1793

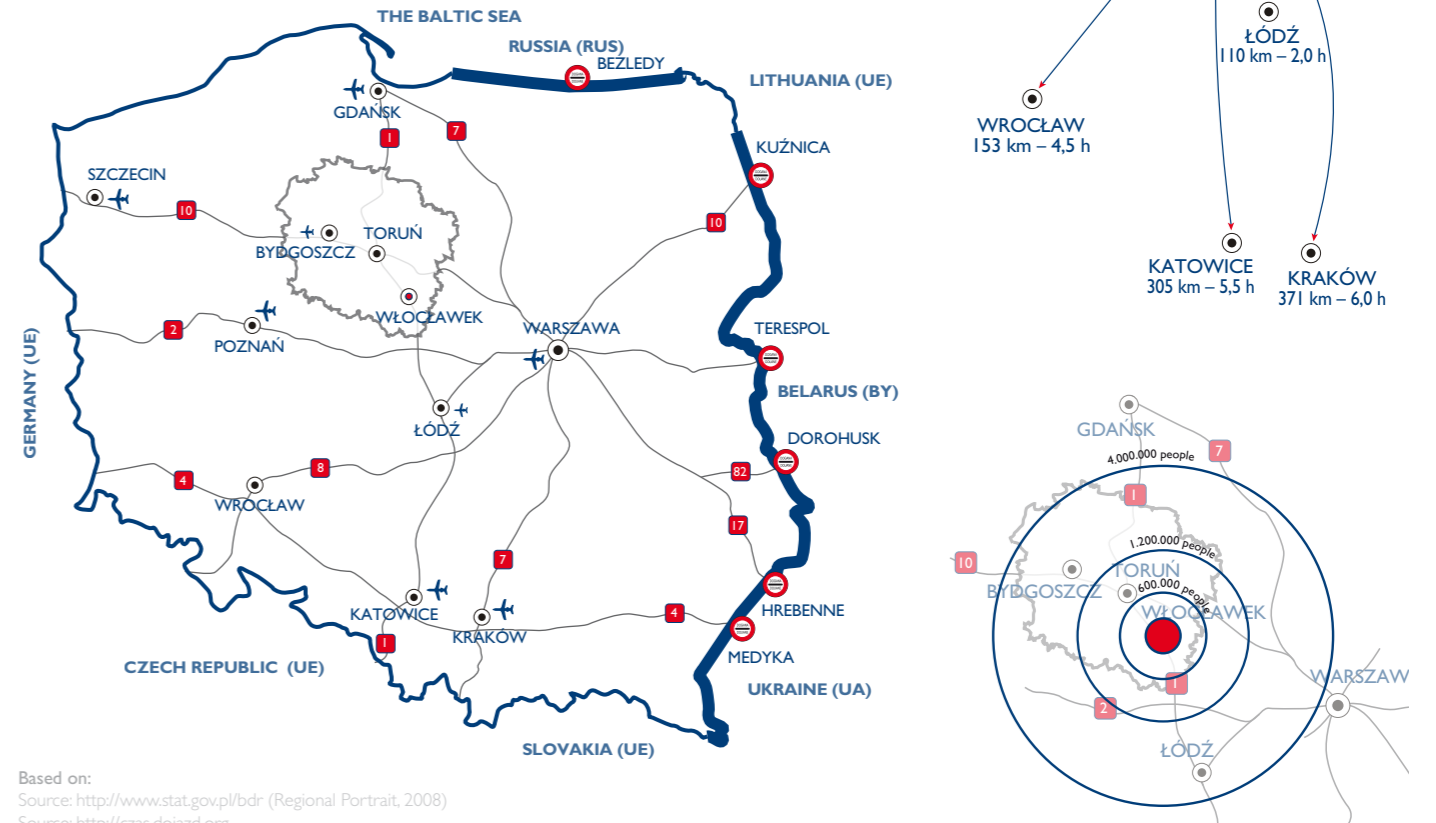
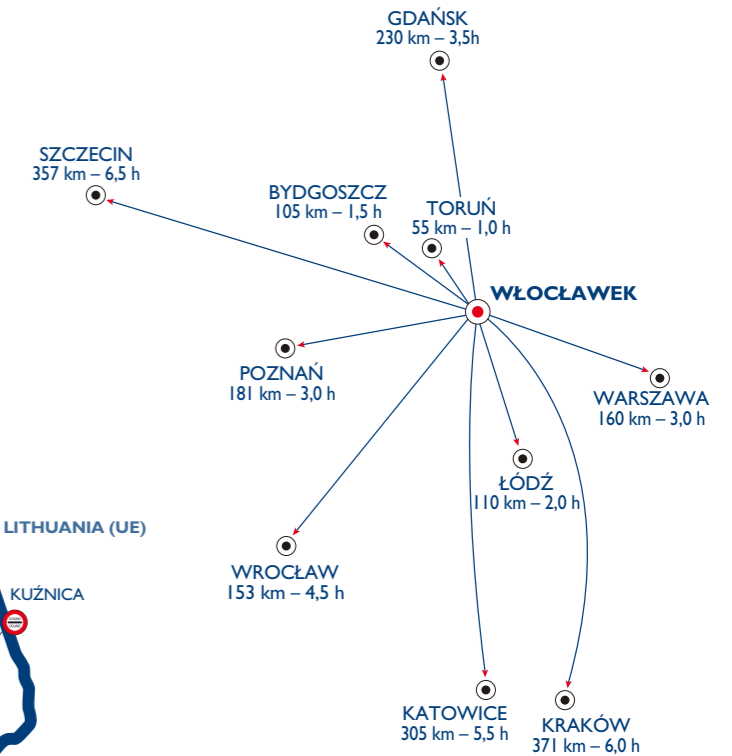
Włocławek became part of the Kingdom of Prussia and later a part of the Duchy of Warsaw (1806-1813) and the Polish Kingdom.

The dynamic re-development of the city was linked to the growth of the industry. In 1816 a chicory processing factory was opened as well as other food processing factories. At the end of the nineteenth century, the largest cellulose factory on the Polish lands had been open, chemical industry developed as well as tanning industry, ceramic (earthenware), printing and metal – at that time in the city there were 37 large factories and plants. For the needs of industry a river port of steam navigation had been built (1855), and the city became existent on the train track between Warsaw and Bydgoszcz (1862). The attractiveness of the industrial city rose even more when a bridge over the Vistula river was built, which allowed direct communication with other parts of Poland.

In the 20s of the XX century, the Vistula river had been regulated and a river port was built. The city developed urban water supply and a power station. At the end of World War II Włocławek rapidly began to develop. Following the tradition of the industrial city, the following established: a nitrogen plant, paint and varnish factory, ropes and wire factory, and a ceramic tableware factory. Thanks to the growing industrial importance of Włocławek and administrative reforms of the seventies, the city had been given a provincial status. At the turn of the 80s and 90s of the twentieth century Włocławek had over 100 thousand inhabitants. Today over 120 thousand people live here and it is the 3-largest city of the Kujawy-Pomeranian province.

From here everything is nearby...

Włocławek's location is its major advantage. Through the municipality in the north-south direction runs the National Road No 1 Gdańsk - Gorzyce (the border of the Country). The city will also be supported by the planned motorway A1. Through Włocławek runs the train track of national importance – Piła - Kutno. Vistula River runs along the national road No. 62 Strzelno - Włocławek-Nowy Dwór Mazowiecki. Close by is the airport of the Włocławek Aero Club in Kruszyn, which together with the airport in Bydgoszcz (100 km - 1.5 hours by car), gives the possibility to use air transport. Due to the execution of A-1 motorway and express road S-5 and S-10 the city will be even better accessible. At the moment water transport possibilities are not used to their full capacity, even though through the Bydgoszcz Canal it is possible to transport goods by water to Germany.



Based on:
 Source: <http://www.stat.gov.pl/bdr> (Regional Portrait, 2008)
 Source: <http://czas.dojazd.org>
 Source: <http://www.zumi.pl>



Mrs. **KAROLINA GMURCZYK** (English speaking)
 Mrs. **ANNA PAKULSKA** (English speaking)
INVESTOR ASSISTANCE OFFICE
 Business Initiative and Promotion Department
 Zielony Rynek 11/13, 87-800 Włocławek (PL)
 tel.: 054 414 42 30, fax 054 411 36 00
 mail: przedsiębiorczosc@um.wloclawek.pl



IMPORTANT WŁOCLAWEK RELATED INTERNET ADDRESSES: WWW.WLOCLAWEK.PL • WWW.Q4.PL • WWW.SCENA.WLOCLAWEK.PL • WWW.WLOCLAWEK.INFO.PL



The oldest school in the city, and one of the oldest seminaries in Poland, is the founded in 1569 **Higher Seminary in Wloclawek**. The Seminar recently became part of the structures of the newly created **Faculty of Theology at the Nicolaus Copernicus University in Torun**.

HIGHER VOCATIONAL EDUCATION IN WLOCLAWEK	
The State Higher Vocational School – www.pwsz.wloclawek.pl	1.700
School of Humanities and Economics – www.wshe.pl	5.000
College of Computer Science – www.wloclawek.wsinf.edu.pl	750
School of Technology and Entrepreneurship – www.wstip.wloclawek.pl	200

Education

Demographical and educational potential

Wloclawek is characterized by a rich education database of vocational schools. In addition to the 3 secondary schools, Wloclawek also has 10 complexes of schools with profiles sought by the industry business (mechanical engineering, electrical, construction, chemical, economic, automobile, pharmaceutical, business and the property protection). The educational offer at this level is supplemented by the Schools of Music Complex, the Center for Continuing Education and Training and Education Center.

The city is home to 7 universities. The biggest of these is the **College of Humanities and Economics** in Wloclawek (1995). This is a private university founded by the Scientific Society of Wloclawek. Currently there are more than 5 thousand students studying in the full-time and weekend system in 10 fields of study: administration, economics, Polish philology, history, IT, environment protection, sociology, pedagogy, nursing, physical education, and European studies.

In the **State's Higher Vocational School** (2002) nearly 1700 students are being educated. The school offers the following faculties: Polish and English philology, international relations, management and administration.

In Wloclawek there is also a nonresident faculty of one of the largest IT universities in **Poland – College of Computer Science in Lodz** (1997). Since 2002, more than 750 people studied here. Another university is **Wloclawek's College of Technology and Entrepreneurship** (2004), which offers studies in the following technical fields: transport and construction. Currently the college has around 200 students.

Sport-recreation-nature

Wloclawek is a city of active people. There are over 51 sport clubs in the city, which bring together in various sections more than 7 thousand people. The pride of the city is ANWIL Wloclawek, the basketball Champion of Poland in 2003, seven-time runner of Polish Basketball League, winner of the Polish Cup and Super Cup (2007). There are also other sport clubs such as Wloclawek's Boxing Club (WKB) Start Wloclawek, Wloclawek Rowing Association, Athletics and Sports Club and Yacht Club Anwil. One of the most recognizable and modern sports facilities is the opened in Wloclawek in 2001 Hall of Champions, which can seat 3.500 people.



In 2006, the existence of its registered office in Wloclawek was declared by 16 foundations listed in the registry ID, and 214 associations and other social organizations. In the years 1995-2001, more than a threefold increase in this number was noted. Of these, 14 organizations have the statute of a public benefit organization (2008).

Wloclawek is surrounded by forests - in its immediate vicinity an oasis of silence and peace can be easily found. There are good conditions for relaxation and recreation such as hiking, biking, as well as for sailing, canoeing, horseback riding. Within the boarders area of the there are 2 thousand hectares of forests (including sanctuary Kulin), which represents 22% of the area. There are kilometers of bike and horse paths. You can spend a weekend in the saddle in the following equestrian centers: in Fabianki, Michelin and Dębice.

The highest natural and touristic value has the Gostynian-Wloclawek Landscape Park, which inhabits among others the breeding standpoints of the gray heron. The park contains numerous tourist and hiking paths. Good conditions for water recreation are on the Wloclawek Bay - in Zarzeczewo there is a sailing marina, a good place for windsurfing. As a result of the construction of a dam on the Vistula River in the years 1963-1970, the bay is the second, one of the largest in Poland, of this type of reservoirs.

It is 57 km long with the average width of 1.210 meters. During the season, for over 30 years, the annual regatta of the Blue Ribbon of the Wloclawek Bay is being organized. In Kruszyn the Wloclawek Aeroclub is based, which organizes both national and international competitions of plane modeling, gliders and air balloons.



Mrs. **KAROLINA GMURCZYK** (English speaking)
 Mrs. **ANNA PAKULSKA** (English speaking)
INVESTOR ASSISTANCE OFFICE
 Business Initiative and Promotion Department
 Zielony Rynek 11/13, 87-800 Wloclawek (PL)
 tel.: 054 414 42 30, fax 054 411 36 00
 mail: przedsiębiorczosc@um.wloclawek.pl



IMPORTANT WLOCLAWEK RELATED INTERNET ADDRESSES: WWW.WLOCLAWEK.PL • WWW.Q4.PL • WWW.SCENA.WLOCLAWEK.PL • WWW.WLOCLAWEK.INFO.PL

Wloclawek Economic Development Zone
 – Industry and Technology Park (WSRG-PPT)



Culture

The main unit of the city's museum is the Museum of the Kujawy and Dobrzyń Land with the following division: History Museum of Wloclawek, the Ethnographic Museum and Art Collections. Also the Diocesan Museum is noteworthy. In 2006 nearly 30 thousand people visited Wloclawek museums. This number is disproportionately small to the size of the city and the number of tourists visiting the city. Cultural activities are undertaken in the city's four culture centers. Among the initiatives Wloclawek's theater initiatives, the theatres: Vladimir Gniazdowski's Impresaryjny Theatre and the Association Educational and Theatrical Association "Our Theater". The leading cultural institutions in the city include the Contemporary Art Gallery and the Wloclawek Cultural Center. Wloclawek is also an important center of a large number of high reputation choirs including the Vladislavia Choir as well as the Craftsman's Lutnia Choir. Wloclawek also has a multiplex cinema, which has 6 rooms and 1.260 seats.



Wloclawek – a city of good business

Wloclawek's investors can count on the support of specialized business-friendly institutions. The Investor Assistance Office (IAO) in Wloclawek's Town Hall is prepared to act as a guide in these contacts. Support may also apply to the process of real estate mergers, to obtain the desired regulations for a particular type of investment (local zoning plans, tax incentives, etc.). The quality of personnel serving the investors is confirmed by the obtained certificates (Investor Friendly City, Municipality Fair Play, "Grunt na medal", etc.). The investment offer can be extended according to needs of the investor. The services provided to an investor (also conducted in foreign languages), is implemented at the pace and standards expected by the investor. Local authorities have received the patronage of the Pomeranian Special Economic Zone (www.strefa.gda.pl) for the investment areas located in Wloclawek. During the investment process, depending on the conditions and choice of location, it is possible to extend the investment with zone regulations.

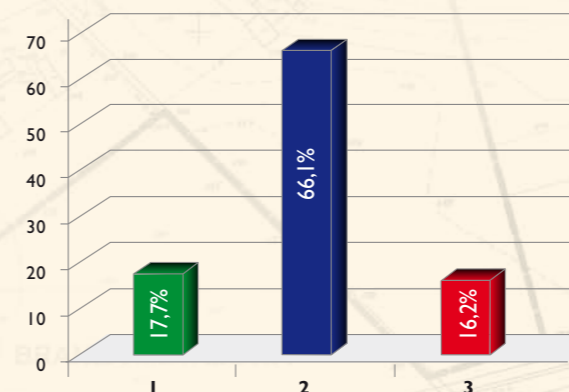
A system of electronic document circulation (ESOD) is implemented in the Town Hall, and the investment process after establishing contact with the IAO, receives an individual dedicated guardian. The quality and speed of handling matters of citizens and investors builds the image of an office friendly to residents, visitors, investors, and the professional investors' partner.

There are numerous institutions in Wloclawek prepared to handle business: banks, training companies, law firms, training and conference centers. There are 5 hotels in the city, with over 500 beds.

TOTAL % OF INHABITANTS AT THE:

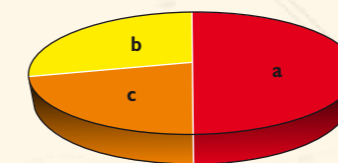
1. Pre-working age – 17,7%
2. Productive age – 66,1%
3. After productive age after – 16,2%

Proportion of after productive age people to 100 persons at the productive age – 51,3%.



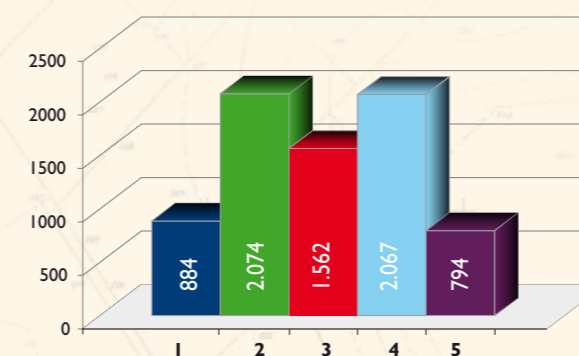
NUMBER OF REGISTERED UNEMPLOYED:

- a. Total – 7,381 persons
- b. Women 4.194
- c. Men 3.187



UNEMPLOYED ACCORDING TO AGE:

1. 24 and less – 884 persons
2. 25-34 – 2.074
3. 35-44 – 1.562
4. 45-54 – 2.067
5. 55 and over – 794



Source: GUS, Bank Of Regional Data: 31.12.2008, <http://www.stat.gov.pl/bdr> (Regional portrait, 2008)

Why Wloclawek?

The economical portrait...

Wloclawek has a well developed branch wise and structurally diverse economy. Industry is still a very important part of the city's economy. Among the largest of Wloclawek's companies are: Nitrogen Plant ANWIL SA (fertilizer industry), Akzo Nobel Coatings Sp. z o. o. (formerly NOBILES - chemical industry), Wloclaw Wire and Rope Factory Drumet (metal industry), KUJAWIANKA Sp. z o. o. (food industry), Rieber Foods Poland SA - DELECTA (food industry), TOP 2000 - Hamelin Sp. z o. o. (paper industry), and Kuyavian Fruit and Vegetable Processing Plant Wloclawek Sp. z o. o. (food industry).

Wloclawek has 13.776 registered economic entities. The vast majority are private entities 13.485 (798 are commercial companies), and 291 persons representing the public sector (CSO, Regional Data Bank, 31.12.2008). In terms of economic statistics, Wloclawek is on the top of the region. The participation of the private sector has stabilized at 70%. Less than 44% of the total employed has been working in the industrial and construction business.

Total employed:	33.647 persons
Women:	15.509 persons
Men:	18.138 persons

<http://www.stat.gov.pl/bdr> (Regional Portrait, 2008).

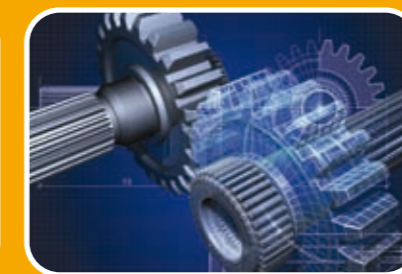
The analysis shows that the dynamics of population change for Wloclawek is similar to other cities and to the average for the entire region. The city does not avoid the problems of the age structure of the population, and although the population at the pre-working age is decreasing (since 1995 by 33%), the population at the after production age is growing (since 1995 by 26%).

UPDATE: APRIL 2009 (source: Central Statistical Office)

The average monthly salary in Wloclawek	750 euro
The average monthly salary in the region	800 euro
The unemployment rate in Wloclawek	14.1 %
The unemployment rate in the region	14.1 %
The unemployment rate in Wloclawek County	19.9 %
Unemployment rate	13.0 %



Mrs. **KAROLINA GMURCZYK** (English speaking)
 Mrs. **ANNA PAKULSKA** (English speaking)
INVESTOR ASSISTANCE OFFICE
 Business Initiative and Promotion Department
 Zielony Rynek 11/13, 87-800 Wloclawek (PL)
 tel.: 054 414 42 30, fax 054 411 36 00
 mail: przedsiębiorczosc@um.wloclawek.pl



IMPORTANT WLOCLAWEK RELATED INTERNET ADDRESSES: WWW.WLOCLAWEK.PL • WWW.Q4.PL • WWW.SCENA.WLOCLAWEK.PL • WWW.WLOCLAWEK.INFO.PL

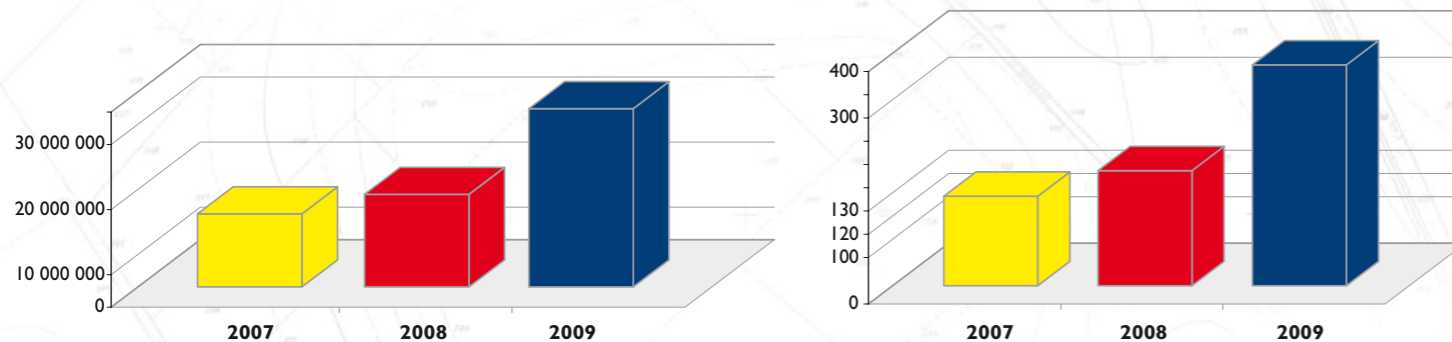
Wloclawek Economic Development Zone
 – Industry and Technology Park (WSRG-PPT)

INVESTMENT PROJECTS FINANCED BY EXTERNAL SOURCES (INCLUDING EU)

PROJECT NAME	VALUE OF THE PROJECT	FINANCE-SOURCE - TIME FRAME
Transit Route Wloclawek - upgrade	3.300.000 euro	PHARE SSG 2001 (2004-2005)
Modernization of national road No. 1	2.631.579 euro	means of the state budget (2007-2008)
Social Housing	355.263 euro	means of the state budget (2005-2006)
The construction of the gym at the Secondary School Complex	289.474 euro	means of the state budget (2008.20.09)
The construction of sports fields ORLIK 2012	425.000 euro	means of the state budget
Electronic document circulation system in the City Town of Wloclawek	236.842 euro	ERDF (2006)
Wloclawek's Economic Development Zone Industry and Technology Park	11.700.237 euro	ERDF (2009-2010)
URBAMAS within URBACT – management of urban space	6.200 euro	ERDF
Wloclawek Innovation and Entrepreneurship Incubator	5.694.238 euro	ERDF (2009-2010)
Touristic Development of Wloclawek	1.613.289 euro	ERDF (2010-2011)

YEAR	TOTAL	PER CAPITA
2009	28.857.716 euro	250 euro
2008	14.984.191 euro	130 euro
2007	11.829.097 euro	101 euro

CAPITAL EXPENDITURES IN WLOCLAWEK TOWN 2006-2009 (AMOUNT) AND PER CAPITA



Wloclawek Economic Development Zone Industry and Technology Park (WSRG-PPT)

Wloclawek Economic Development Zone - Industry and Technology Park (WSRG-PPT), is a project carried out by the city of Wloclawek in cooperation with the European Union funds. This project is one of the key projects of the Regional Operational Program of the Kujawy-Pomeranian Province 2007-2013. The investment area consists of 40 ha, which provides comprehensive technical infrastructure addressing the needs of the investor.

A division into 5 sectors has been planned:

- Area 1** construction and storage industry (construction, production of construction materials, logistic centers) – area of 6,1 ha
- Area 2** companies specializing in the implementation of know-how industry – area of 5,8 ha
- Area 3** chemical industry (possibility to work with ANWIL as well as creating an industry cluster) – area of 21,6 ha
- Area 4** metal industry – area of 2,8 ha
- Area 5** microfilm production and specialized services – area of 3,5 ha

WSRG – PPT

WSRG – PPT Location: Wloclawek, Zachód Przemysłowy District, close to ANWIL S.A.

Area: 40 ha

Type of activity: industry and services

Nature of the investment: investment projects

Local zoning plan: industry

Available through: bid – according to the guidelines

COMMENTS:

- It is assumed that on the prepared area approximately 14 companies will be located and that they will employ around 400 people.
- Till 2016 it is not possible to implement regulations of the special economic zone in the WSRG-PPT (consequence of using EU support to prepare the investment area).
- Next to the WSRG-PPT areas is around 40 ha of land – it can be used for industrial activities, it is not prepared technically (not equipped with technical infrastructure).
- Tax relieves applicable in the area of the Wloclawek City are dependant on the number of jobs created and are consistent with the rules for de minimis aid (Resolution no 30/XXVIII/09 of Wloclawek City Council dated April 27th 2009).

Companies that decide to invest in WSRG-LUT can expect support from the City Hall of Wloclawek in administrative assistance in the form of one-stop shop in the preparation and implementation of the investment. The area is covered by the main routes (national road No. 1). Industrial area, located in the immediate vicinity of the nitrogen plant ANWIL (Orlen Group), leader in the chemical industry. The proximity of this modern company stimulates the economic development of companies operating in various sectors of industry. In the immediate vicinity of the project plant producing construction materials is operating, the investor is PV Prefabet Kluczbork S.A.

Given the connection of the above project with the Wloclawek Innovation Incubator and Entrepreneurship project, co-operation with universities for the transfer of innovation and technology for the localized in WSRG-PPT companies is planned.



Mrs. **KAROLINA GMURCZYK** (English speaking)
 Mrs. **ANNA PAKULSKA** (English speaking)
INVESTOR ASSISTANCE OFFICE
 Business Initiative and Promotion Department
 Zielony Rynek 11/13, 87-800 Wloclawek (PL)
 tel.: 054 414 42 30, fax 054 411 36 00
 mail:przedsiębiorczosc@um.wloclawek.pl



IMPORTANT WLOCLAWEK RELATED INTERNET ADDRESSES: WWW.WLOCLAWEK.PL • WWW.Q4.PL • WWW.SCENA.WLOCLAWEK.PL • WWW.WLOCLAWEK.INFO.PL

Wloclawek Economic Development Zone – Industry and Technology Park (WSRG-PPT)

Cooperation for Success Investor Assistance Office

Working closely with the City, the investor can expect free and professional service in the following areas: information about the status and availability of real estate offers and investment projects, the existing legal provisions and procedures, assistance in dealing with public authorities and institutions, direct help with the project. The Investor Service Office is a unit operating within the structures of the Municipal Office of Wloclawek. The services are provided in Polish and English.



BUSINESS RELATED INSTITUTIONS IN WLOCLAWEK AND THE REGION

- Kujavian Chamber of Commerce, www.kiph.wvl.pl, Stefan Okrzei 60 Street, Wloclawek
- Various Crafts Guild, www.cech.w3wl.pl, Wolności Square 17, Wloclawek
- Kujawy Credit Guarantees Sp. z o. o., poreczenia@kdb.com.pl, Zabia 6 Street, Wloclawek
- The Superior Technical Organization (Wloclaw Council of Federation of Engineering Associations), www.not.org.pl, Branch in Wloclawek, Wolności Square 1, Wloclawek
- Torun Regional Development Agency, www.tam.org.pl, Kopemika 4 Street, Torun
- Kujawy-Pomeranian Loan Fund Sp. z o. o., www.pozyczki.kujawsko-pomorskie.pl, Bechiego 2 Street, Wloclawek

FOREIGN INVESTORS (BIZ) IN WLOCLAWEK

SK Eurochem Sp. z o.o.	www.skeurochem.tworzywa.biz	KOREA
TOP 2000 - HAMELIN Sp. z o.o.	www.top2000.pl	FRANCE
P.V. Prefabet Kluczborck S.A.	www.pv-prefabet.com.pl	GERMANY
Rieber Foods Polska – DELECTA	www.delecta.pl	NORWAY

The largest in Europe plant for the production of terephthalic acid (TPA) licensed by Mitsubishi Chemical (JAPAN) is under construction at the moment - the investor is ORLEN. The plant will be open in 2011.

WHY IS IT WORTH TO INVEST IN WLOCLAWEK?

- Good location and well connected to various transportation networks
- Real estate offer for locations in the vicinity of operating chemical plants
- Infrastructure base adjusted to the needs of investors
- Co-operation opportunities
- Investor-friendly politics of the city authorities
- Care of the investment processes provided by the Investor Assistance Office
- Favorable business environment
- Competitive labor prices, availability of highly motivated employees
- Modern infrastructure
- Attractive housing

City of new opportunities...



INVESTOR ASSISTANCE OFFICE

Business Initiative and Promotion Department
Zielony Rynek 11/13, 87-800 Wloclawek (PL)
tel.: 054 414 42 30, fax 054 411 36 00
mail: przedsiębiorczosc@um.wloclawek.pl



IMPORTANT WLOCLAWEK RELATED INTERNET ADDRESSES: WWW.WLOCLAWEK.PL • WWW.Q4.PL • WWW.SCENA.WLOCLAWEK.PL • WWW.WLOCLAWEK.INFO.PL

Wloclawek Economic Development Zone
– Industry and Technology Park (WSRG-PPT)

Cooperation for Success Investor Assistance Office

Working closely with the City, the investor can expect free and professional service in the following areas: information about the status and availability of real estate offers and investment projects, the existing legal provisions and procedures, assistance in dealing with public authorities and institutions, direct help with the project. The Investor Service Office is a unit operating within the structures of the Municipal Office of Włocławek. The services are provided in Polish and English.



City of new opportunities...

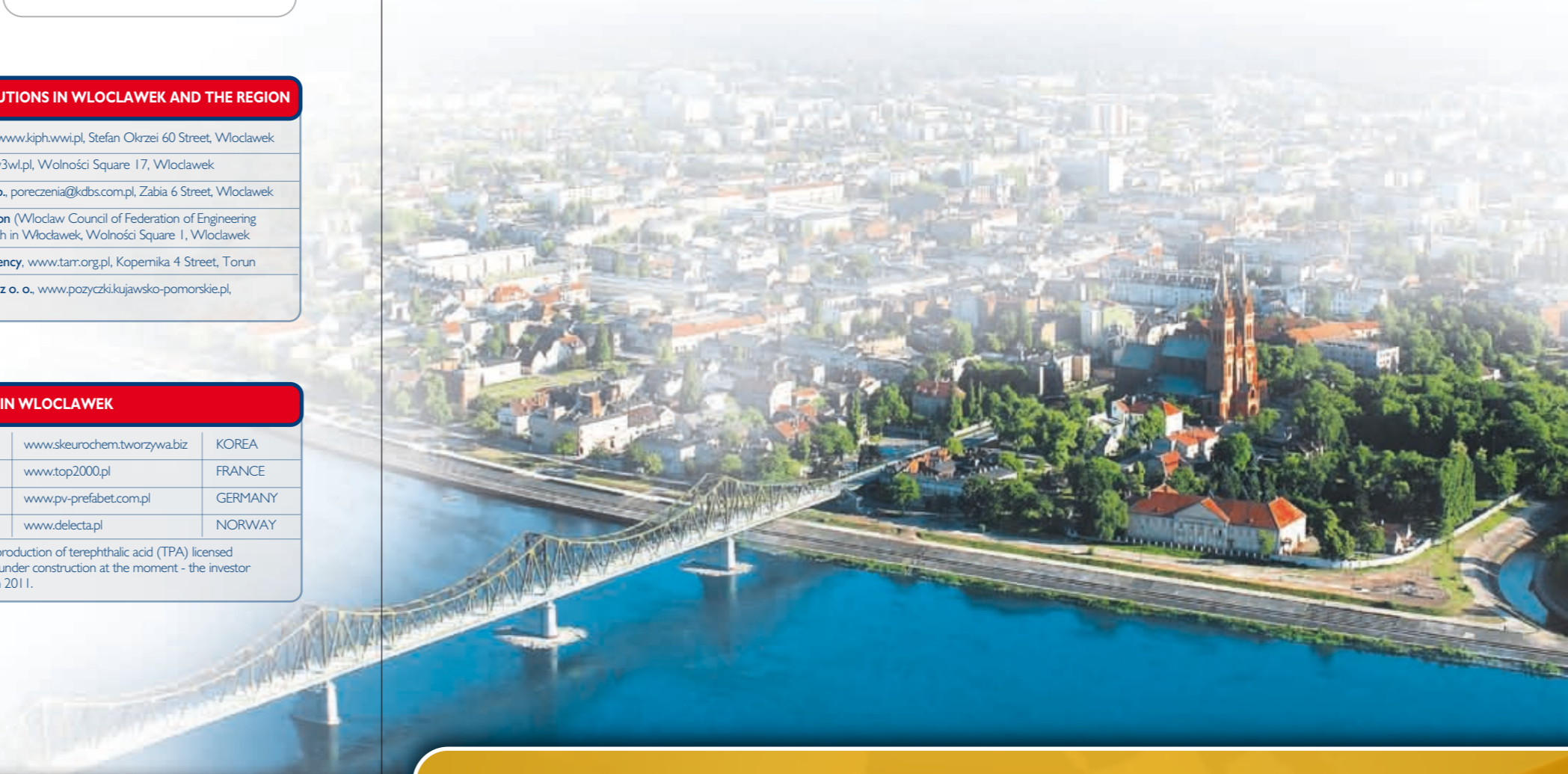
BUSINESS RELATED INSTITUTIONS IN WLOCLAWEK AND THE REGION

- Kujavian Chamber of Commerce, www.kiph.wwi.pl, Stefan Okrzei 60 Street, Włocławek
- Various Crafts Guild, www.cech.w3wl.pl, Wolności Square 17, Włocławek
- Kujawy Credit Guarantees Sp. z o. o., poreczenia@kdb.com.pl, Zabia 6 Street, Włocławek
- The Superior Technical Organization (Włocław Council of Federation of Engineering Associations), www.not.org.pl, Branch in Włocławek, Wolności Square 1, Włocławek
- Torun Regional Development Agency, www.tam.org.pl, Kopemika 4 Street, Torun
- Kujawy-Pomeranian Loan Fund Sp. z o. o., www.pozyczki.kujawsko-pomorskie.pl, Bechiego 2 Street, Włocławek

FOREIGN INVESTORS (BIZ) IN WLOCLAWEK

SK Eurochem Sp. z o.o.	www.skeurochem.tworzywa.biz	KOREA
TOP 2000 - HAMELIN Sp. z o.o.	www.top2000.pl	FRANCE
P.V. Prefabet Kluczborck S.A.	www.pv-prefabet.com.pl	GERMANY
Rieber Foods Polska – DELECTA	www.delecta.pl	NORWAY

The largest in Europe plant for the production of terephthalic acid (TPA) licensed by Mitsubishi Chemical (JAPAN) is under construction at the moment - the investor is ORLEN. The plant will be open in 2011.



INVESTOR ASSISTANCE OFFICE

Business Initiative and Promotion Department
Zielony Rynek 11/13, 87-800 Włocławek (PL)
tel.: 054 414 42 30, fax 054 411 36 00
mail: przedsiębiorczosc@um.wloclawek.pl



INVESTORS

„The location of our investment in Wloclawek resulted primarily from a favorable location in the heart of Poland and Europe. The project was implemented in partnership conditions, with the total understanding of the problems by the city's authorities. We did not expect such professional and well organized assistance. We are also pleasantly surprised by the skills of Wloclawek's specialists...”

Kong Youg Song,
President of SK Eurochem

„Rieber Foods Poland is in Wloclawek, for 4 years. The city's image is changing rapidly. Development of the city is important to me ... I found here the necessary staff to achieve success in my business ...”

Piotr Sieńko,
Managing Director, Rieber Foods Polska

