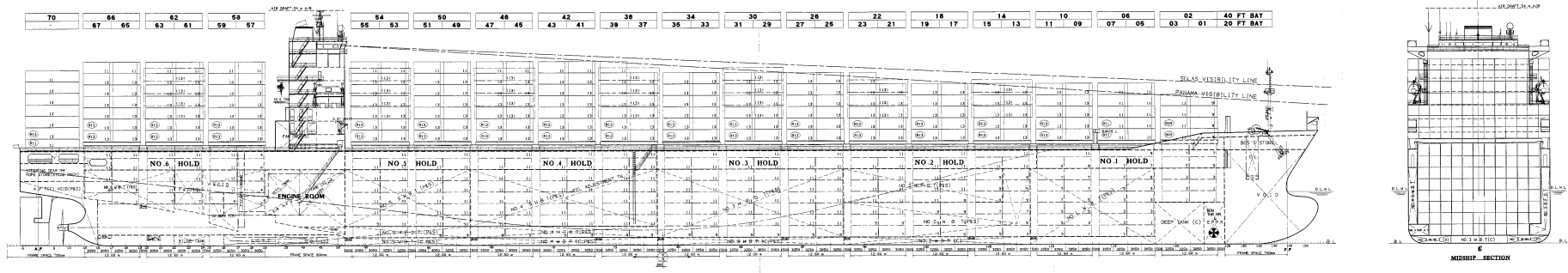




# "MAERSK DJIBOUTI"

## Hanjin Heavy Industries & Construction Co., Ltd.

### 5060 TEU CLASS CONTAINERSHIP



<u>MAIN PARTICULARS</u>		
Length o. a.	approx.	294.06 m
Length b.p.p.		283.00 m
Breadth		32.20 m
Depth to main deck		21.60 m
Draught, designed		12.00 m
Draught, scantling		13.50 m
Deadweight on Td	apprx.	55,925.00 mt
Deadweight on Ts	apprx.	68,282.20 mt
Service Speed		24.30 kn
(90%MCR = NCR and 15% sea margin)		
Class: Germanscher Lloyd GL ✕ 100 A5 E, NAV-O SOLAS -II-2, Reg.19 C2P64 Container Ship ✕ MC E AUT		
<u>TANK CAPACITIES</u>		
Heavy fuel oil	apprx.	6,672.48 m <sup>3</sup>
Marine diesel oil	apprx.	448.07 m <sup>3</sup>
Fresh water	apprx.	397.34 m <sup>3</sup>
Ballast water	apprx.	18,573.04 m <sup>3</sup>

<u>MAIN ENGINE</u>		
MAN B&W		9K90MC-C
MCR		41,040kWx104.1 RPM
Bow thruster		1x1900 kW
<u>FUEL OIL CONSUMPTION OF MAIN ENGINE</u>		
F.O.C at NCR	apprx.	160 MT/day
Cruising range	apprx.	20,000 NM
<u>POWER SUPPLY</u>		
Diesel generator		4x1,790 kW
Emergency generator		1x300 kW
<u>CARGO HATCH COVER</u>		
Type	:	Single plated, steel construction type
Stack weight	:	90mt/20ft & 120mt/40ft
Panel weight	:	max.35 MT of each panel
(Excluding fixed lashing equipment&fittings)		
<u>COMPLEMENT</u>		29 P

<u>CONTAINER CAPACITIES</u>	
With max. number of containers	
IMO visibility guidance	
On deck (6/7 tiers)	2,778 TEU
In hold	2,282 TEU
<b>Total</b>	<b>5,060 TEU</b>
Rows max. in holds/on hatches	11/13 Rows
Tiers max. in holds/on hatches	8/6-7 Tiers
El. Plugs/for reefer container / total ( on deck only)	454 sockets
With Panama Canal Visibility apprx.	4857 TEU
Stability (14/TEU homo.)	3400 TEU

**5060TEU Container vessel**