

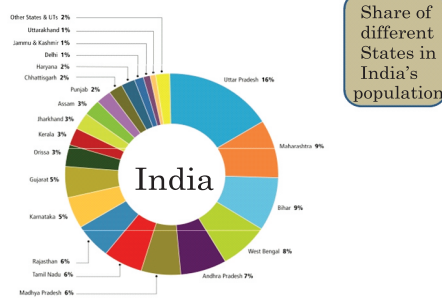
Count You



CENSUS OF INDIA 2011

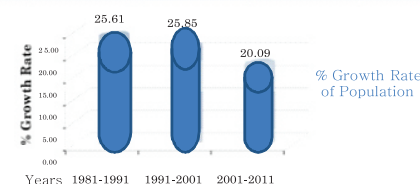
PROVISIONAL POPULATION TOTALS - UTTAR PRADESH - DATA SHEET

Our Census Our Future

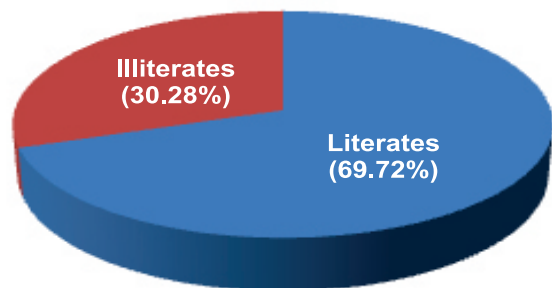


Population 2001-2011 Uttar Pradesh

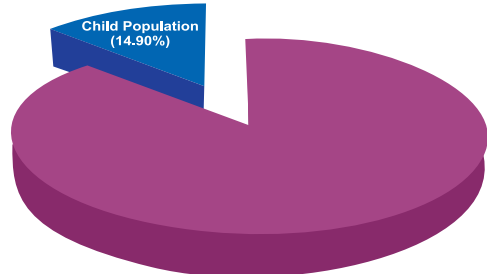
	2011	2001	Difference	% Growth 2001-2011
Persons	199,581,477	166,197,921	33,383,556	20.09
Males	104,596,415	87,565,369	17,031,046	19.45
Females	94,985,062	78,632,552	16,352,510	20.80



Proportion of Literates & Illiterates Uttar Pradesh 2011



Proportion of Child Population (0-6 Years) Uttar Pradesh 2011



Number of Administrative Units Uttar Pradesh 2011

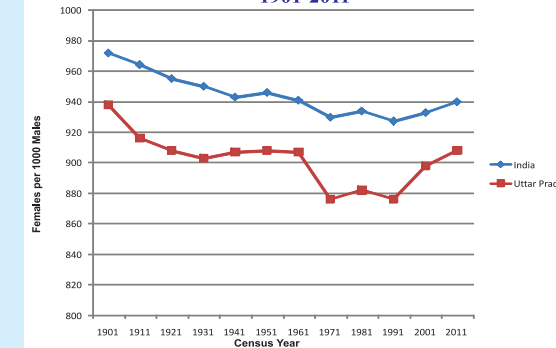
Districts	71
Tahsils	312
Statutory Towns	648
Census Towns	267
Villages	1.06 Lakh

District Code	State/District Name	Total Population	Males	Females	Percentage Decadal Growth 2001-2011	Sex Ratio	Density (persons per sq. km.)	Child Population (0-6 Years)	Child Sex Ratio (0-6 Years)	Literacy Rate		
										Persons	Males	Females
	Uttar Pradesh	199,581,477	104,596,415	94,985,062	20.09	908	828	29,728,235	899	69.72	79.24	59.26
01	Saharanpur	3,464,228	1,835,740	1,628,488	19.59	887	939	505,263	883	72.03	79.77	63.30
02	Muzaffarnagar	4,138,605	2,194,540	1,944,065	16.80	886	1033	630,329	858	70.11	79.11	60.00
03	Bijnor	3,683,896	1,925,787	1,758,109	17.64	913	808	549,305	870	70.43	78.70	61.45
04	Moradabad	4,773,138	2,508,299	2,264,839	25.25	903	1284	763,000	909	58.67	66.83	49.63
05	Rampur	2,335,398	1,226,175	1,109,223	21.40	905	987	370,259	919	55.08	63.10	46.19
06	Jyotiba Phule Nagar	1,838,771	964,319	874,452	22.66	907	818	291,320	898	65.70	76.53	53.77
07	Meerut	3,447,405	1,829,192	1,618,213	15.92	885	1347	488,271	850	74.80	82.91	65.69
08	Baghpat	1,302,156	700,724	601,432	11.87	858	986	189,088	837	73.54	84.17	61.22
09	Ghaziabad	4,661,452	2,481,803	2,179,649	40.66	878	3954	663,367	850	85.00	88.16	81.42
10	Gautam Buddha Nagar	1,674,714	904,505	770,209	51.52	852	1306	245,232	845	82.20	90.23	72.78
11	Balanshahar	3,498,507	1,848,643	1,649,864	16.23	892	775	537,624	844	70.23	82.52	56.60
12	Aligarh	3,673,849	1,958,536	1,715,313	22.78	876	1007	555,429	871	69.61	80.24	57.48
13	Mahamaya Nagar	1,565,678	837,446	728,232	17.19	870	851	240,376	862	73.10	83.83	60.79
14	Mathura	2,541,894	1,368,445	1,173,449	22.53	858	761	396,853	871	72.65	84.39	58.93
15	Agra	4,380,793	2,356,104	2,024,689	20.96	859	1084	638,983	835	69.44	78.32	59.16
16	Firozabad	2,496,761	1,337,141	1,159,620	19.94	867	1037	369,940	879	74.60	83.08	64.80
17	Mainpuri	1,847,194	984,892	862,302	15.69	876	669	275,616	878	78.26	86.93	68.35
18	Budaun	3,712,738	1,997,242	1,715,496	20.96	859	718	647,664	902	52.91	62.39	41.76
19	Bareilly	4,465,344	2,371,454	2,093,890	23.40	883	1084	669,681	900	60.52	69.47	50.35
20	Pilibhit	2,037,225	1,078,525	958,700	17.89	889	553	297,116	909	63.58	73.46	52.43
21	Shahjahanpur	3,002,376	1,610,182	1,392,194	21.80	865	684	488,615	902	61.61	70.09	51.73
22	Kheri	4,013,634	2,126,782	1,886,852	25.14	887	523	644,410	926	62.71	71.58	52.62
23	Sitapur	4,474,446	2,380,666	2,093,780	23.62	879	779	732,695	921	63.38	72.61	52.80
24	Hardoi	4,091,380	2,204,264	1,887,116	20.39	856	683	662,807	863	68.89	77.20	59.17
25	Unnao	3,110,595	1,636,295	1,474,300	15.19	901	682	417,145	913	68.29	77.06	58.54
26	Lucknow	4,588,455	2,407,897	2,180,558	25.79	906	1815	521,815	913	79.33	84.27	73.88
27	Rae Bareilly	3,404,004	1,753,344	1,650,660	18.51	941	739	460,898	929	69.04	79.39	58.06
28	Farrukhabad	1,887,577	1,007,479	880,098	20.20	874	865	292,791	884	70.57	79.34	60.51
29	Kannauj	1,658,005	882,546	775,459	19.37	879	792	251,533	897	74.01	82.36	64.46
30	Etawah	1,579,160	845,893	733,267	17.95	867	683	220,220	870	79.99	87.64	71.16
31	Auraiya	1,372,287	736,144	636,143	16.30	864	681	193,969	895	80.25	87.37	71.97
32	Kanpur Dehat	1,795,092	964,284	830,808	14.82	862	594	243,919	896	77.52	85.27	68.48
33	Kanpur Nagar	4,572,951	2,469,114	2,103,837	9.72	852	1449	484,529	870	81.31	85.07	76.89
34	Jalaun	1,670,718	895,804	774,914	14.87	865	366	219,378	880	75.16	84.89	63.88
35	Jhansi	2,000,755	1,061,310	939,445	14.66	885	398	249,154	859	76.37	86.58	64.88
36	Lalitpur	1,218,002	639,392	578,610	24.57	905	242	206,018	914	64.95	76.41	52.26
37	Hamirpur	1,104,021	593,576	510,445	11.09	860	275	148,557	885	70.16	81.27	57.19
38	Mahoba	876,055	465,937	410,118	15.52	880	279	124,719	897	66.94	77.72	54.65
39	Banda	1,799,541	966,123	833,418	19.84	863	408	289,764	898	68.11	79.38	54.95
40	Chitrakoot	990,626	527,101	463,525	23.53	879	308	171,468	907	66.52	77.42	54.03
41	Fatehpur	2,632,684	1,385,556	1,247,128	14.05	900	634	377,020	905	68.78	78.69	57.76
42	Pratapgarh	3,173,752	1,591,480	1,582,272	16.20	994	854	427,623	915	73.10	85.29	60.99
43	Kaushambi	1,596,909	838,095	758,814	23.60	905	897	263,467	926	63.69	75.35	50.76
44	Allahabad	5,959,798	3,133,479	2,826,319	20.71	902	1087	832,870	902	74.41	85.00	62.67
45	Barabanki	3,257,983	1,707,951	1,550,032	21.86	908	740	504,272	930	63.76	72.49	54.10
46	Faizabad	2,468,371	1,258,455	1,209,916	18.16	961	1054	347,080	927	70.63	80.21	60.72
47	Ambedkar Nagar	2,398,709	1,214,225	1,184,484	18.35	976	1021	324,550	929	74.37	83.95	64.62
48	Sultanpur	3,790,922	1,916,297	1,874,625	17.92	978	855	539,347	921	71.14	81.99	60.17
49	Bahraich	3,478,257	1,838,988	1,639,269	28.75	891	664	635,383	933	51.10	60.23	40.76
50	Shrawasti	1,114,615	594,318	520,297	30.21	875	679	202,667	923	49.13	59.55	37.07
51	Balrampur	2,149,066	1,117,984	1,031,082	27.74	922	642	385,308	968	51.76	61.66	40.92
52	Gonda	3,431,386	1,785,629	1,645,757	24.07	922	857	545,944	924	61.16	72.23	49.13
53	Siddharthnagar	2,553,526	1,296,046	1,257,480	25.17	970	882	465,777	922	61.81	73.79	49.61
54	Basti	2,461,056	1,256,158	1,204,898	18.05	959	916	372,315	922	69.69	80.65	58.35
55	Sant Kabir Nagar	1,714,300	870,547	843,753	20.71	969	1041	272,117	940	69.01	80.72	56.99
56	Mahrajganj	2,665,292	1,375,367	1,289,925	22.61	938	903	402,081	924	64.30	77.62	50.14
57	Gorakhpur	4,436,275	2,281,763	2,154,512	17.69	944	1336	595,495	905	73.25	84.38	61.54
58	Kushinagar	3,560,830	1,821,242	1,739,588	23.14	955	1226	551,467	917	67.66	80.10	54.74
59	Deoria	3,098,637	1,539,608	1,559,029	14.16	1,013	1,220	445,259	921	73.53	86.07	61.34
60	Azamgarh	4,616,509	2,289,336	2,327,173	17.17	1,017	1,139	680,792	916	72.69	83.08	62.65
61	Mau	2,205,170	1,114,888	1,090,282	18.88	978	1,287	327,500	924	75.16	84.61	65.59
62	Ballia	3,223,642	1,667,557	1,556,085	16.77	933	1,081	448,844	897	73.82	85.19	61.72
63	Jaunpur	4,476,072	2,217,635	2,258,437	14.43	1,018	1,108	643,020	916	73.66	86.06	61.70
64	Ghazipur	3,622,727	1,856,584	1,766,143	19.26	951	1,073	538,527	907	74.27	85.77	62.29
65	Chandauli	1,952,713	1,020,789	931,924	18.83	913	768	304,229	976	73.86	83.58	63.07
66	Varanasi	3,682,194	1,928,641	1,753,553	17.32	909	2,399	478,474	896	77.05	85.12	68.20
67	Sant Ravidas Nagar (Bhadohi)	1,554,203	797,164	757,039	14.81	950	1,531	244,012	898	71.10	83.87	57.79
68	Mirzapur	2,494,533	1,312,822	1,181,711	20.24	900	566	392,230	902	70.38	80.83	58.77
69	Sonbhadra	1,862,612	973,480	889,132	23.77	913	270	308,921	920	66.18	77.19	54.11
70	Etah	1,761,152	945,157	815,995	14.98	863	724	277,672	878	73.27	83.21	61.72
71	Kanshiram Nagar *	1,438,156	765,529	672,627	17.05	879	736	244,852	888	62.30	72.91	50.20

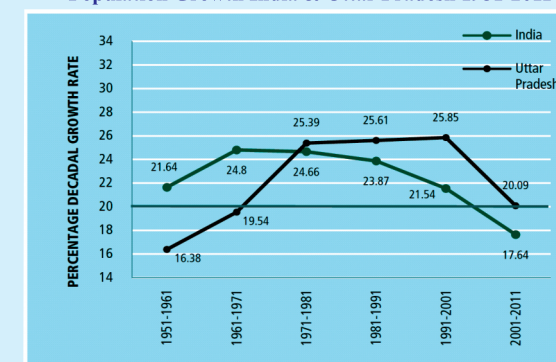
Notes: For Census 2011, the population of "Others" has been clubbed with the "Males" for working out population, 0-6 population, literates and related rates and ratios.

Source: Series-10, Uttar Pradesh, Provisional Population Totals, Paper-I of 2011 & Series-1, India, Provisional Population Totals, Paper-I of 2011

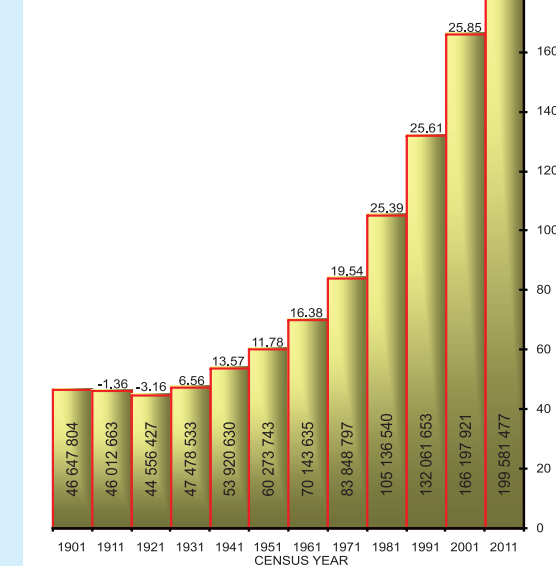
Trends in Sex Ratio, India & Uttar Pradesh 1901-2011



Population Growth India & Uttar Pradesh 1951-2011



Population and Net Decadal Accretion 1901-2011 Uttar Pradesh



"Heroes are ordinary men and women, who on motivation perform extraordinary feats in extraordinary times"
-A tribute to all the Census functionaries



Directorate of Census Operations, Uttar Pradesh

Ministry of Home Affairs