

This seal is your assurance that Nintendo has reviewed this product and that it has met our standards for excellence in workmanship, reliability and entertainment value. Always look for this seal when buying games and accessories to ensure complete compatibility with your Nintendo Product.



NINTENDO AUSTRALIA PTY. LTD.

Scoresby Industrial Park, 804 Stud Road, Scoresby Victoria 3179 Australia
http://www.nintendo.com.au

IMPORTANT: FIRST CAREFULLY READ THE SEPARATE Wii MOTIONPLUS INSTALLATION GUIDE INCLUDED WITH THIS PRODUCT FOR INSTRUCTIONS ON ATTACHING Wii MOTIONPLUS TO YOUR Wii REMOTE™ CONTROLLER.



NOTE: If you are attaching Wii MotionPlus to a new Wii Remote, the remote must be synchronized with your Wii console before use. See the Wii Operations Manual for instructions.

Important safety information when using the Wii System

Before setup and use of the Wii system, please review this safety information to ensure an enjoyable and safe play experience.

1. WEAR THE WRIST STRAP WHEN USING THE Wii REMOTE.

- Make sure all players use the wrist strap and that the strap lock is correctly tightened.
- When sharing the Wii Remote between multiple players, make sure each person uses the wrist strap properly.
- Wearing the wrist strap will prevent you from accidentally dropping or throwing the remote during game play, which could damage the remote or surrounding objects, or cause injury to other people.

2. DO NOT LET GO OF THE REMOTE DURING GAME PLAY.

- Read the Instruction booklet for the game you are playing and follow all game control instructions for correct use of the Wii Remote or accessory.
- Hold the remote securely and avoid excessive motion, as it may cause you to let go of the remote and may break the wrist strap.
- If your hands become moist, stop and dry your hands.

3. ALLOW ADEQUATE ROOM AROUND YOU DURING GAME PLAY.

- Stay at least three (3) feet away from the television.
- As you may move around during game play, make sure objects and other people are out of your range of movement or arm motion to prevent damage or injury.

4. DO NOT USE Wii MOTIONPLUS WITHOUT THE JACKET.

Unlicensed Accessories

Do not attach unlicensed accessories to the Wii Remote, as the use of unlicensed accessories may lead to injury to yourself or others and may cause performance issues and/or damage to the system. Use of any such unlicensed accessories will invalidate your Nintendo product warranty.

TM, ® and the Wii logo are trademarks of Nintendo. © 2009 Nintendo.

Table of Contents

Components	2
Attaching Wii accessories	3
Removing Wii accessories	4
Tips on using Wii MotionPlus	6
Tips on using Wii MotionPlus with the Nunchuk™	7
Replacing the batteries in the Wii Remote	8
Troubleshooting	10
Warranty and Service Information	13

Please carefully and completely read the Wii™ Operations Manual - System Setup before using this accessory. The manual contains important health and safety information. Be sure to read the sections on:

- **Health and Safety**
- **Setup of the Wii Remote™**
- **The Wii Console Usage Precautions in the System Setup section**

If this product will be used by young children, this manual should be read and explained to them by an adult.

Wii MotionPlus can be used only with a Wii Remote controller. Additionally, you must use Wii software that supports Wii MotionPlus gameplay features. Look for this icon on software packaging for software that are designed to be used with Wii MotionPlus.

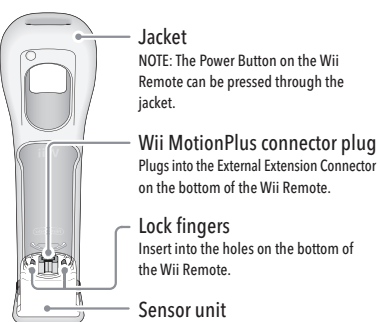


NOTE: Your Wii Remote will still function normally with software that do not include Wii MotionPlus gameplay features. The Wii Remote does not need to be disconnected from Wii MotionPlus once it is installed, unless you are using your Wii Remote with the Wii Zapper™, Wii Wheel, or other accessories that attach in a similar way.

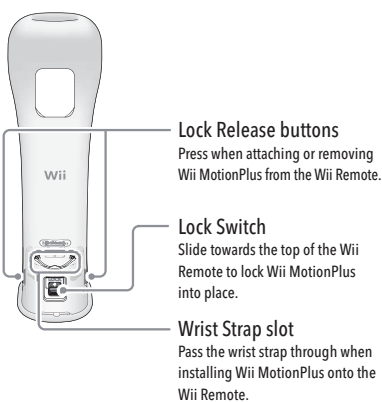
NOTE: This product does not contain latex.

This product complies with applicable laws barring the use of toxic materials such as lead, mercury, cadmium, hexavalent chromium, PBB or PBDE in consumer products.

Front view

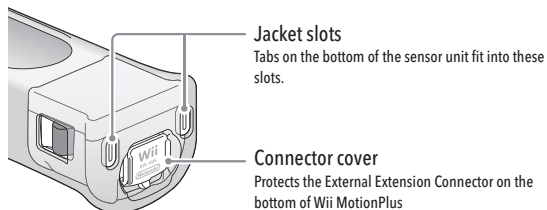


Back view



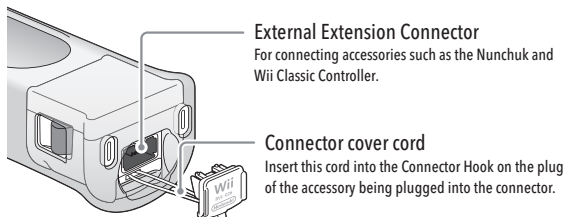
Bottom view

Connector cover attached



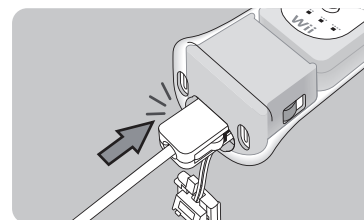
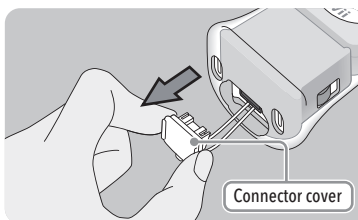
Bottom view

Connector cover removed

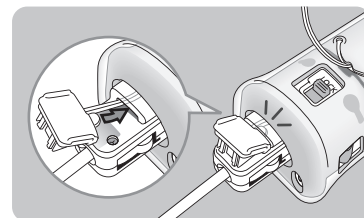
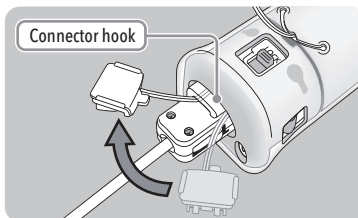


The Nunchuk, Classic Controller, or other accessories that connect to the External Extension Connector, can be used while Wii MotionPlus is attached to the Wii Remote. Follow these procedures to connect these accessories to Wii MotionPlus.

1. Remove the connector cover from the Rbottom of Wii MotionPlus. Grasp the cover by the sides as shown.
2. Insert the connector plug into the External Extension Connector on the bottom of Wii MotionPlus until it clicks into place.

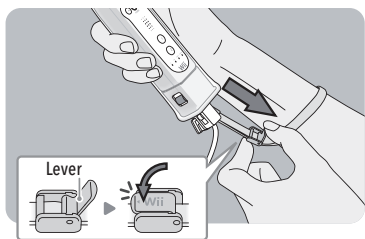


3. Pass the Connector Cover cord through the connector hook on the back of the connector.
4. Insert the tab on the edge of the connector cover into the connector hook. Press the connector cover firmly into place on the connector plug.

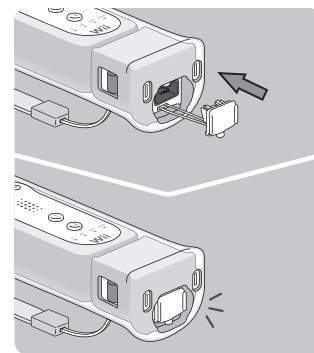


Continued next page 3

5. Place your hand through the wrist strap and adjust the strap lock so that the strap will not fall off your wrist. Do not over tighten the strap lock so that it's uncomfortable. It should just be tight enough to hold the wrist strap in place.
Close the lever (if your strap lock has one) until it clicks to hold the strap lock in place.



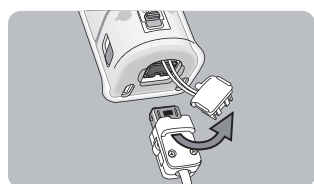
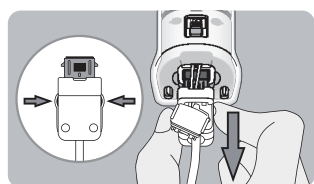
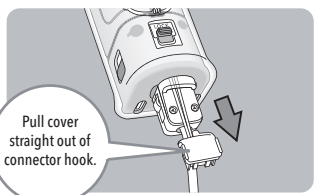
4. Insert the connector cover into the External Extension Connector on the bottom of Wii MotionPlus.



Removing Wii accessories

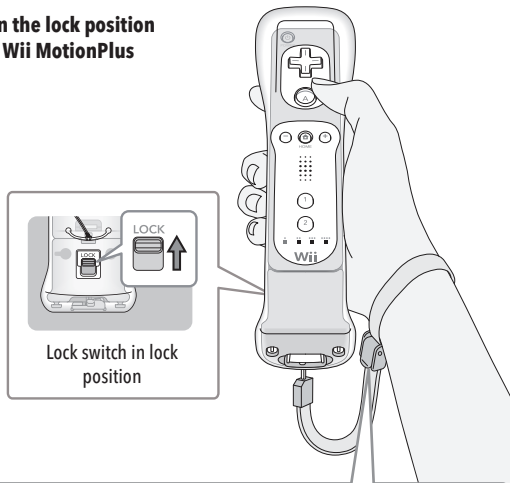
Follow these procedures to remove the Nunchuk, Classic Controller, or other accessories that you have connected to Wii MotionPlus.

1. Remove the connector cover from the accessory connector plug. Be sure to pull the connector cover straight out of the connector hook to prevent damage to the tab on the edge of the cover.
2. Press the lock release levers on the sides of the accessory connector plug and pull the plug straight out of the connector.
3. Remove the connector cover cord from the accessory plug's connector hook.



Tips on using Wii MotionPlus

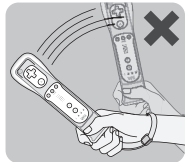
- Grip the Wii Remote firmly and use the wrist strap to prevent losing your grip on the remote and causing damage to the remote or surrounding objects, or injury to other people.
- Make sure the lock switch is in the lock position before using the remote with Wii MotionPlus attached.



Make sure all players use the wrist strap and that the strap lock is correctly tightened.

IMPORTANT: Do not hold or swing the Wii Remote by the Wii MotionPlus accessory.

Hold the Wii Remote securely and do not let go of it.

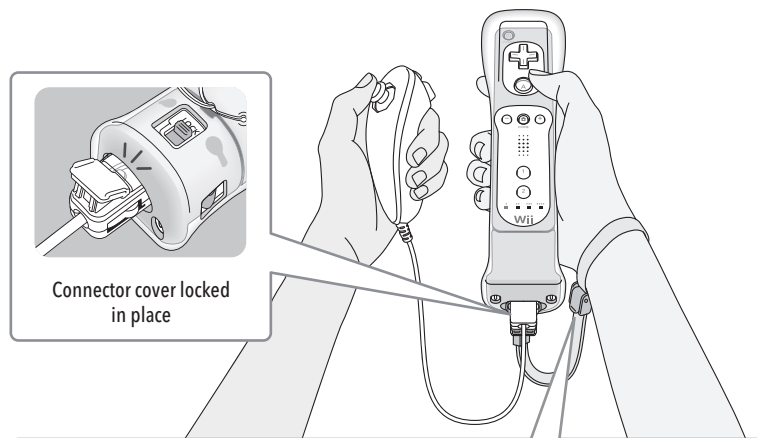


When using the Wii Remote in the horizontal position, you can remove Wii MotionPlus if it is difficult to press the 1 and 2 Buttons.



Tips on using Wii MotionPlus with the Nunchuk™

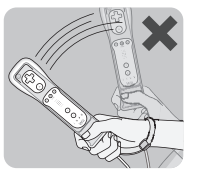
- Grip the Wii Remote and Nunchuk firmly and use the wrist strap to prevent losing your grip on the remote and causing damage to the remote or surrounding objects, or injury to other people.
- Make sure the connector cover cord is fed through the connector hook and that the connector cover is securely locked in place by inserting the tab into the connector hook.



Make sure all players use the wrist strap and that the strap lock is correctly tightened.

IMPORTANT: Do not hold or swing the Wii Remote by the Wii MotionPlus accessory.

Hold the Wii Remote securely and do not let go of it.



Replacing the batteries in the Wii Remote

The Wii Remote uses AA batteries. Nintendo recommends high quality alkaline batteries for best performance and longevity of battery life. **If you use rechargeable nickel metal hydride (NiMH) batteries, be sure to follow the manufacturer's guidelines for safety and proper usage.**

⚠ WARNING - Battery Leakage

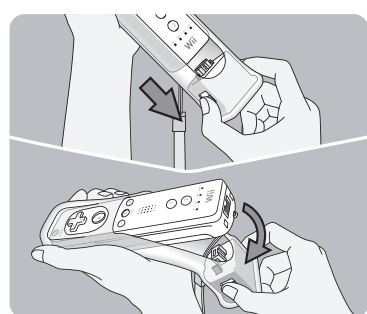
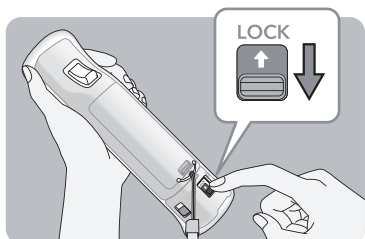
Leakage of battery fluid can cause personal injury as well as damage to your remote. If battery leakage occurs, thoroughly wash the affected skin and clothes. Keep battery fluid away from your eyes and mouth. Leaking batteries may make popping sounds.

To avoid battery leakage:

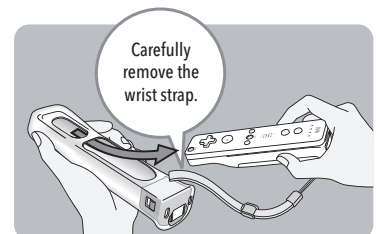
- Do not mix used and new batteries (replace all batteries at the same time).
- Do not mix different brands of batteries.
- Nintendo recommends alkaline batteries. Do not use Lithium ion, nickel cadmium (nicad), or carbon zinc batteries.
- Do not leave batteries in the Wii Remote for long periods of non-use.
- Do not recharge alkaline or non-rechargeable batteries.
- Do not put the batteries in backwards. Make sure that the positive (+) and negative (-) ends are facing in the correct directions. Insert the negative end first. When removing batteries, remove the positive end first.
- Do not use damaged, deformed or leaking batteries.
- Do not dispose of batteries in a fire.

1. Unlock Wii MotionPlus by pushing the lock switch downwards.

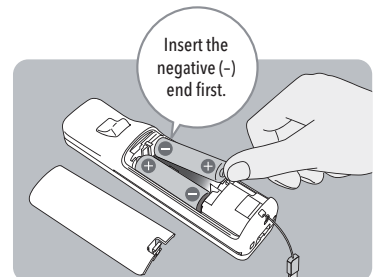
2. Pull the sensor unit out of the Wii Remote while holding down the lock release buttons. Swing the sensor unit down and away from the base of the Wii Remote.



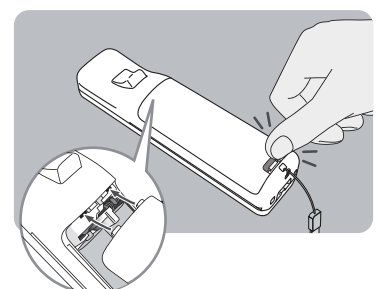
3. Remove the Wii Remote from the jacket. Carefully pull the wrist strap through the wrist strap slot.



4. Remove the battery cover and the old batteries, pulling the positive (+) end out first. Insert the new batteries, inserting the negative (-) end first.



5. Replace the battery cover, making sure the two clips on the end are correctly inserted into the Wii Remote, pushing until it clicks firmly in place.



6. Reinstall Wii MotionPlus onto the Wii Remote. Review the separate Wii MotionPlus Installation Guide included with this product for instructions.

If Wii MotionPlus fails to operate, or operates incorrectly, follow the steps below before seeking assistance.

1. The Wii Remote with Wii MotionPlus attached does not respond.

- Make sure the Wii MotionPlus connector plug is fully inserted into the Wii Remote.
- Review the setup procedure and make sure Wii MotionPlus has been installed correctly.
- Make sure the batteries have been installed correctly and are not depleted. You can press the HOME Button on the Wii Remote to check battery life from the HOME Menu.
- Check the software package and manual (or the Wii Shop Channel screen, if it was downloaded) for the software you are playing to make sure it includes Wii MotionPlus features.
- If none of the above steps resolve the problem, remove and insert the Wii MotionPlus connector plug into the connector on the bottom of the Wii Remote several times and check the operation again.

2. The cursor on the TV screen moves even when the Wii Remote is not being moved or moves differently than when I move the Wii Remote.

- Wii MotionPlus may need to be recalibrated due to the following:
 1. Changing batteries in the Wii Remote during gameplay.
 2. Disconnecting and reconnecting Wii MotionPlus during gameplay.
 3. Moving Wii MotionPlus from a cold environment into a warm environment.

To recalibrate the Wii MotionPlus accessory, place it on a flat horizontal surface with the buttons facing down. Wait for a few seconds and check the operation. Also, review the Instruction Manual for the game you are playing for more information.

NOTE: This procedure must be done during gameplay, and with the Wii MotionPlus accessory attached to the Wii Remote controller.

3. The Wii Remote with Wii MotionPlus attached responds slowly.

- Some televisions process graphics internally for input signals. This may delay the display of graphics but does not damage the Wii Console, Wii Remote, Wii MotionPlus, or the television.

4. The jacket has been removed and I'm having difficulty replacing it.

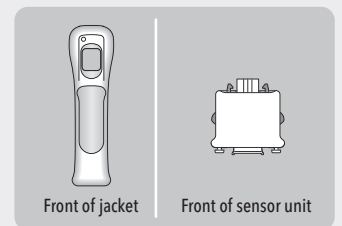
- **The jacket is important for proper and safe operation of the Wii MotionPlus accessory.** Please see the next page for instructions on correctly replacing the jacket if it has become detached. Also review the separate Wii MotionPlus Installation Guide included with this product for installation instructions.

If Wii MotionPlus still does not work after all of the above steps, visit www.nintendo.com.au or contact Nintendo Customer Service.

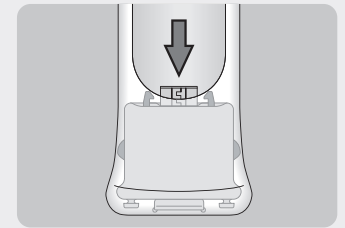
10

Replacing the Jacket

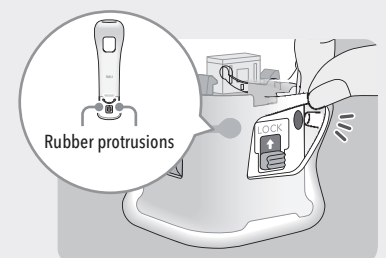
1. Hold the jacket and accessory so they both face forwards.



2. Press the sensor unit into the bottom of the jacket, being careful not to damage the connector or other parts of the accessory.

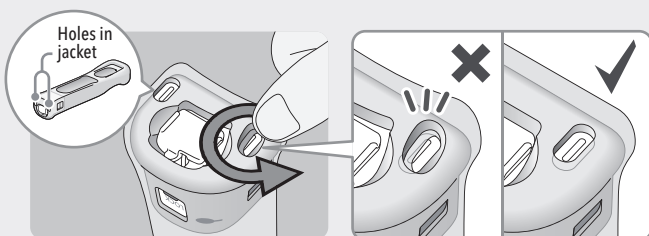


3. Fit the two rubber protrusions on the inside of the jacket into the holes on the back of the sensor unit.

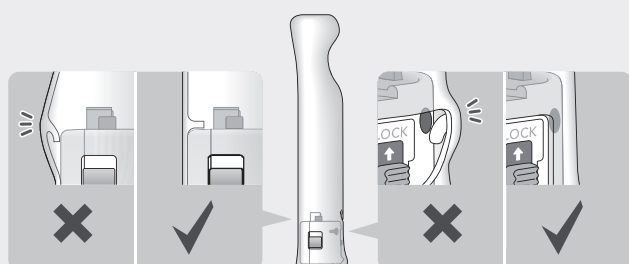


Continued next page 11

4. Using your finger tips, work the bottom of the jacket around so that the plastic hooks on the bottom of the sensor unit fit snugly into the holes in the jacket.



5. Check the fit of the jacket to make sure the walls are not pinched between the Wii Remote and the sensor unit, and that the rubber protrusions are correctly located.



12 MONTH WARRANTY FOR Wii™ ACCESSORY

REV-A

The benefits conferred by this Warranty are in addition to all other conditions, warranties and statutory remedies in respect of this Wii™ Accessory (**Accessory**) which the consumer may have under the Trade Practices Act 1974 (Commonwealth) and/or similar State, Territory or Country Laws.

Nintendo Australia Pty Limited (**Nintendo**) warrants this Game Disc to be free of defects in materials, workmanship and manufacturing to the original purchaser for a period of **twelve months** from the date of original purchase, and upon presentation of the purchase receipt. This warranty only applies to products that are distributed by Nintendo Australia Pty Limited.

1. Nintendo will, at its option and subject to the terms and conditions stated below, repair or replace free of charge this Accessory or any component part, which upon examination by Nintendo is found to be defective in materials, workmanship or manufacturing.
2. This Warranty shall not apply:
 - (a) If a compliance label has been removed from the Accessory or a serial number or other details have been removed or rendered illegible.
 - (b) If the Accessory is connected to any voltage other than shown on the compliance label or unapproved and unlicensed products are used with the Accessory.
 - (c) If the Accessory has been subjected to misuse, abuse, accident or want of care.
 - (d) If the Accessory has been modified and/or tampered with.
 - (e) If a repair has been made or attempted to the Accessory by the purchaser or their agent.
 - (f) If the Accessory fails due to causes unrelated to defective materials, workmanship or manufacturing.
 - (g) If the Accessory is not used at all times in accordance with the instruction booklet, Wii™ Operations Manual or other documentation provided by Nintendo.
3. The following are not covered by this Warranty:
 - (a) Liquid/Moisture damage;
 - (b) Breakage;
 - (c) Wear and tear;
 - (d) Data loss;
 - (e) Battery leakage.
4. Nintendo does not accept any liability pursuant to this Warranty for any consequential damage or economic loss whether direct or indirect, to any person or property.
5. Nintendo's liability under the Warranty is limited to the lesser of the replacement cost or repair cost of the Accessory.
6. If, after inspecting the Accessory, Nintendo determines that the fault is not covered by the warranty for whatever reason, or that there is no fault, you will be liable for service or appraisal charges.

This Warranty is given by Nintendo and no other person or organisation is authorised to vary its provisions and conditions.

Before returning a Game Disc for service:
 Visit our web site www.nintendo.com.au **OR**
 Contact **Nintendo Customer Service** on **(03) 9730 9822**
 for Warranty and Repair information and all other general enquiries.
 Hours of operation: 9:00am to 5:00pm Monday to Friday (EST)

NINTENDO AUSTRALIA HEAD OFFICE
 Scoresby Industrial Park, 804 Stud Road, Scoresby Victoria 3179 Australia