

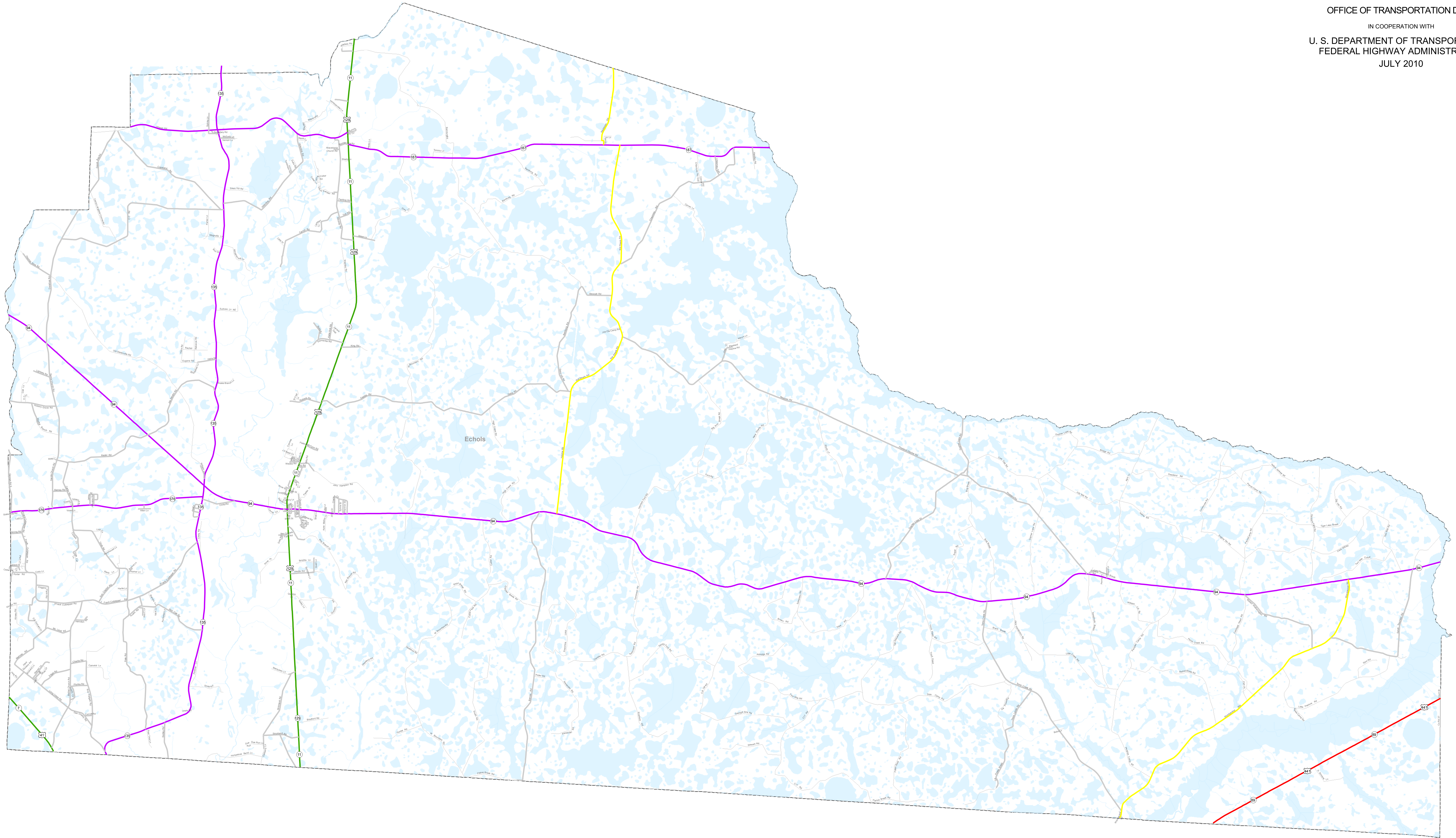
Order #	Approval Date	Completion Date	Route Adjustment
3504	9/2/2008	9/2/2008	Formal relocation of SR-94 with completion of Bridge Replacement Project

FUNCTIONAL CLASSIFICATION MAP

**ECHOLS COUNTY
GEORGIA**

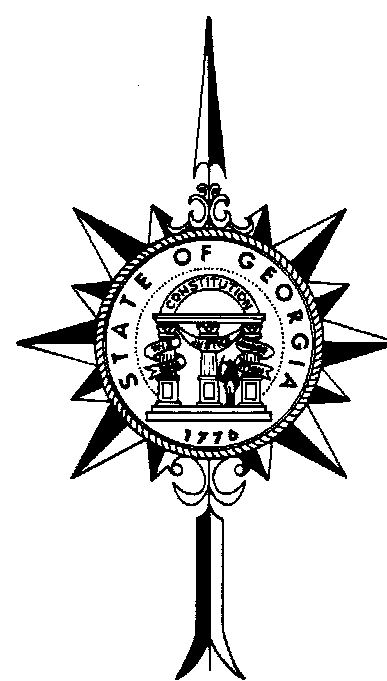
PREPARED BY THE
DEPARTMENT OF TRANSPORTATION
OFFICE OF TRANSPORTATION DATA

IN COOPERATION WITH
U. S. DEPARTMENT OF TRANSPORTATION
FEDERAL HIGHWAY ADMINISTRATION
JULY 2010



Functional Classification

- Urban Interstate Principal Arterial
- Urban Freeway and Expressway
- Urban Principal Arterial
- Urban Minor Arterial Street
- Urban Collector Street
- Urban Local Road
- Rural Interstate Principal Arterial
- Rural Principal Arterial
- Rural Minor Arterial
- Rural Major Collector
- Rural Minor Collector
- Rural Local Road
- - - Projected_Routes
- Urban Area Boundary



Prepared by the Georgia Department of Transportation, Office of Transportation Data, in cooperation with the U.S. Department of Transportation Federal Highway Administration. The Georgia Department of Transportation makes no representation or warranties, implied or expressed, concerning the accuracy, completeness, reliability or suitability for any particular purpose of this information and data contained in this document.

Note: Inset maps are on a different scale.