

LATINOBAROMETRO SURVEY

DATA 1996-2000

Marta Lagos
Presented at
Challenges to Democracy in the Americas
Carter Center
Atlanta - Georgia, USA
October, 16-17, 2000

ANNUAL SURVEY IN 17 COUNTRIES

- 1. ARGENTINA**
- 2. BOLIVIA**
- 3. BRAZIL**
- 4. COLOMBIA**
- 5. COSTA RICA**
- 6. CHILE**
- 7. ECUADOR**
- 8. EL SALVADOR**
- 9. GUATEMALA**
- 10. HONDURAS**
- 11. MEXICO**
- 12. NICARAGUA**
- 13. PANAMA**
- 14. PARAGUAY**
- 15. PERU**
- 16. URUGUAY**
- 17. VENEZUELA**

DATA 2000
18.030 INTERVIEWS

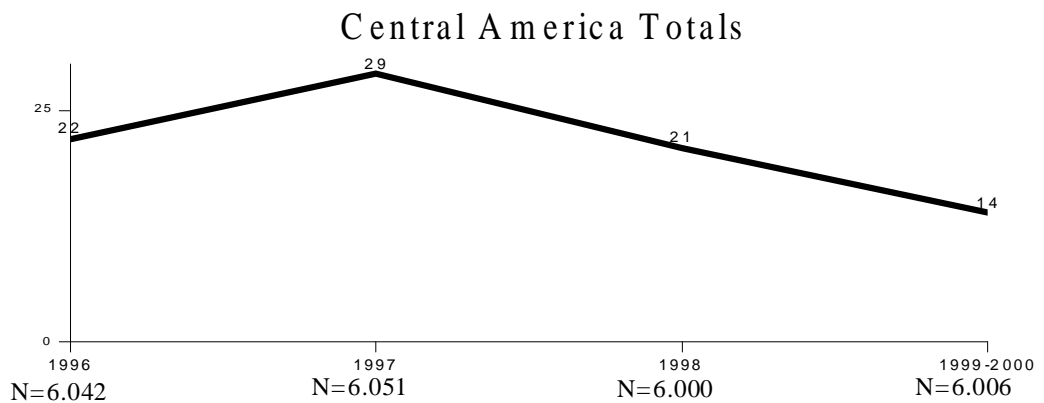
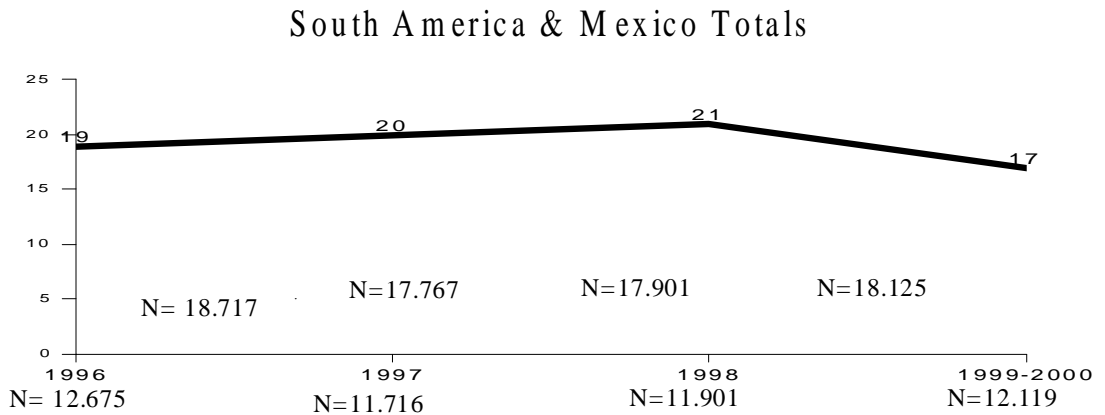
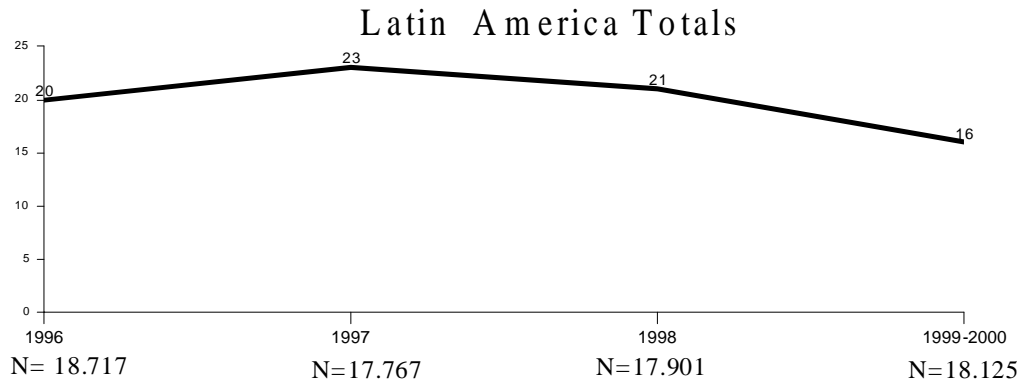
**REPRESENTING ADULT URBAN
POPULATION OF EACH COUNTRY**

(approx. 1.000 interviews per country)

INTERPERSONAL TRUST

Europe triples Latin America in
interpersonal trust level

Interpersonal Trust

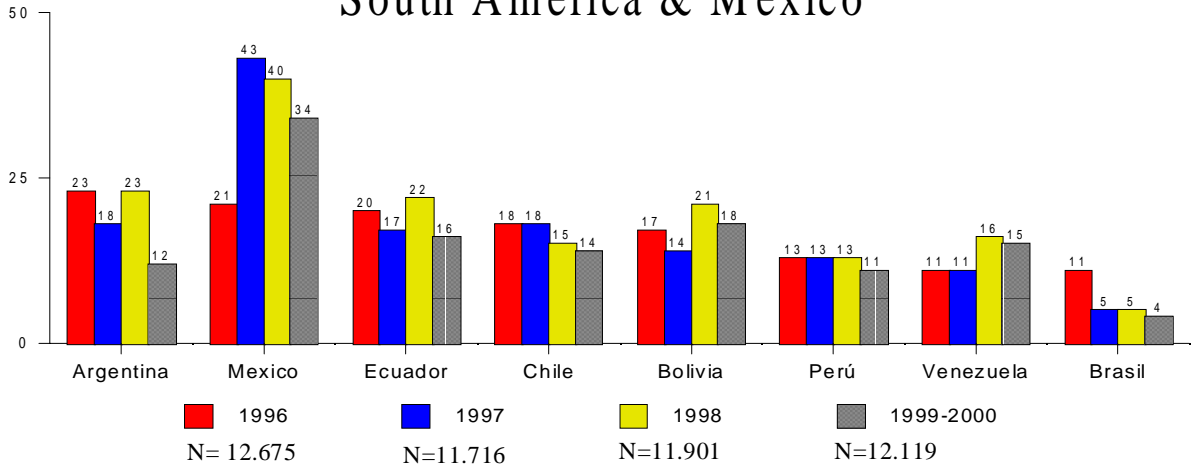


Q. Generally speaking, would you say that you can trust most people, or that you can never be too careful when dealing with others?
 Here only "Can trust most people"

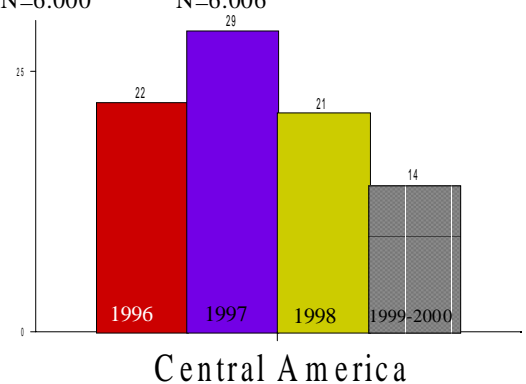
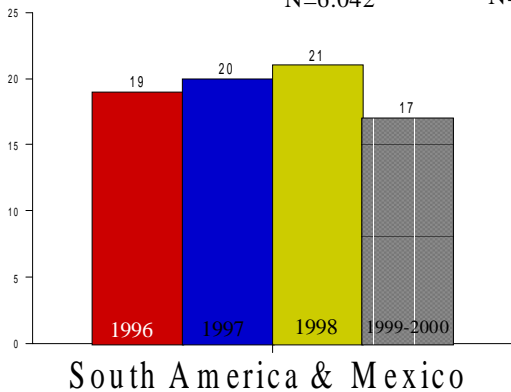
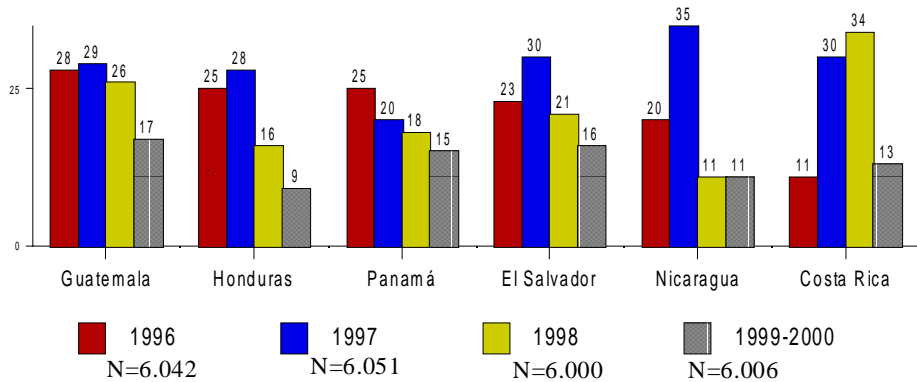
Source: Latinobarometro
 1996 - 2000

Interpersonal Trust

South America & Mexico



Central America



Q. Generally speaking, would you say that you can trust most people, or that you can never be too careful when dealing with others?
 Here only "Can trust most people"

Source: Latinobarometro
 1996 - 2000

Net Support to Democracy

Latin America & Europe

	TRUST	SUPPORT TO DEMOCRACY	NET SUPPORT TO DEMOCRACY
EUROPEAN UNION*	60%	78%	+18%
SOUTHERN EUROPE*	60%	84%	+24%
LATIN AMERICA**	17%	60%	+43%
U S A ***	50%	87%	+37%

* Eurobarometer

** Latinobarometro

*** Wall Street Journal, 2000

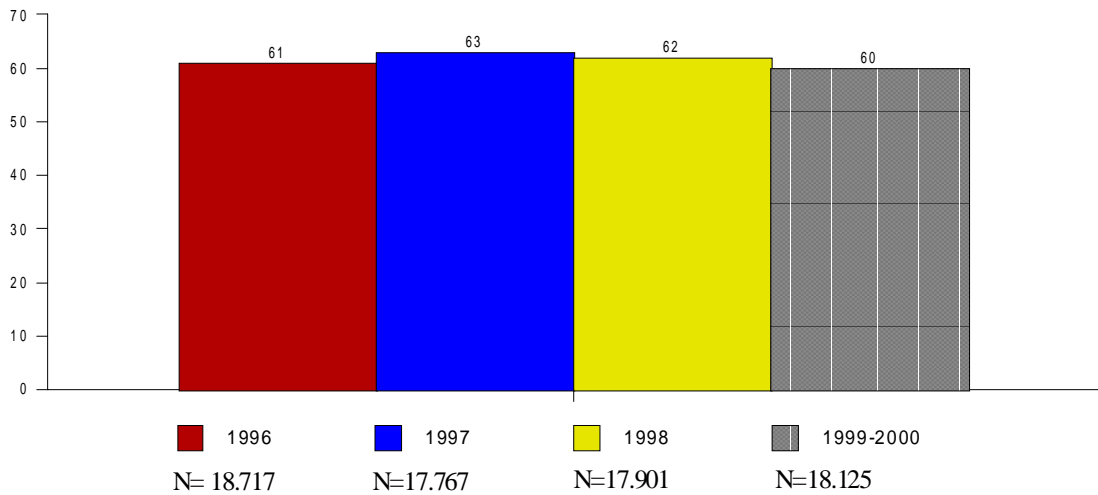
DEMOCRACY & SATISFACTION

Relationship between support of democracy and satisfaction is culturally dependant and relatively the same in Europe, India and Latin America having equal support.

Net legitimacy is equivalent in Europe and in Latin America.

Democracy is preferable

Latin America Totals



Q. Which of the following statements do you agree with most?

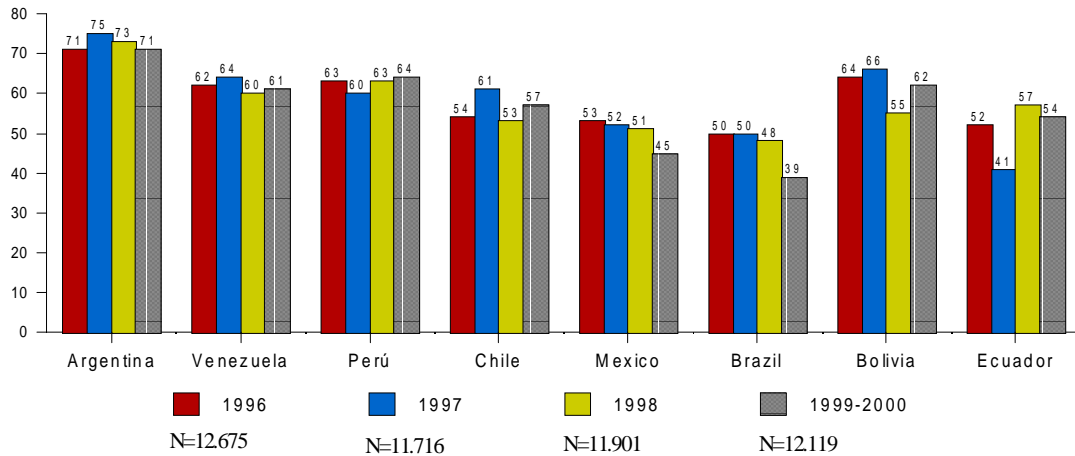
Democracy is preferable to any other kind of government. In certain situations, an authoritarian government can be preferable to a democratic one. It doesn't matter to people like me whether we have a democratic government or a non-democratic government.

Here only "Democracy is preferable to any other kind of government"

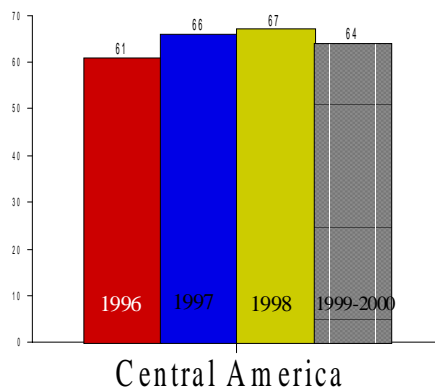
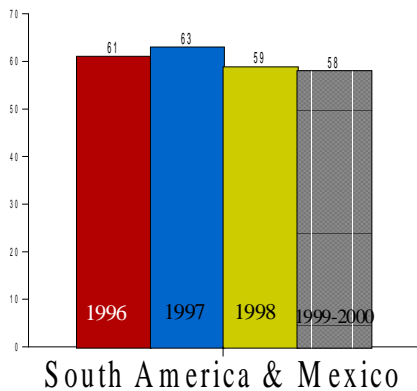
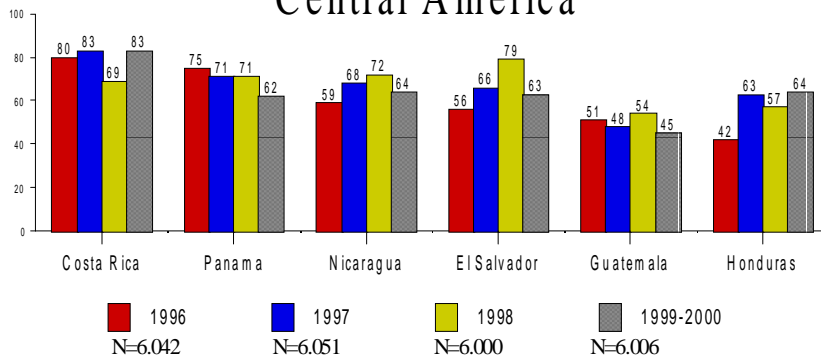
Source: Latinobarometro
1996-2000

Democracy is preferable

South America & Mexico



Central America



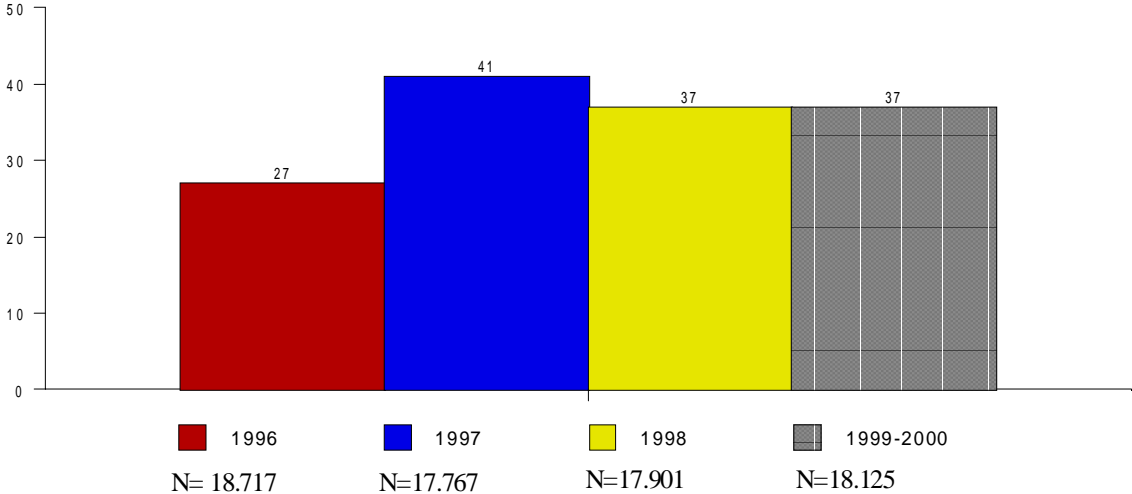
Q. Which of the following statements do you agree with most?
 Democracy is preferable to any other kind of government. In certain situations, an authoritarian government can be preferable to a democratic one. It doesn't matter to people like me whether we have a democratic government or a non-democratic government.

Here only "Democracy is preferable to any other kind of government"

Source: Latinobarometro
 1996-2000

Satisfaction with Democracy

Latin America Totals



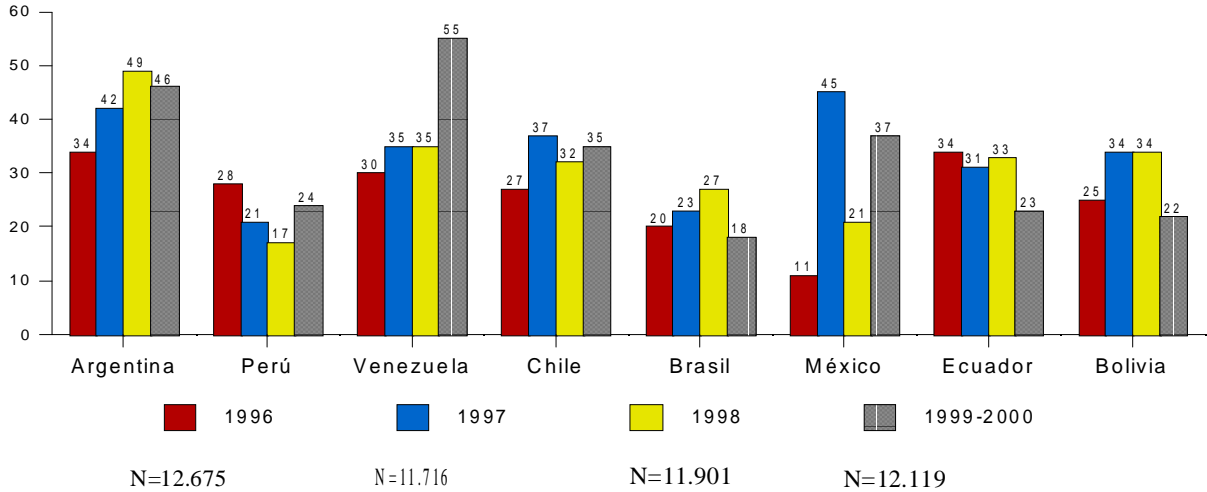
Q. En general, ¿In general, would you say that you are very satisfied, fairly satisfied, not very satisfied or not at all satisfied with the way democracy works in [country]?

Here the amount of "Very satisfied" and "Fairly satisfied"

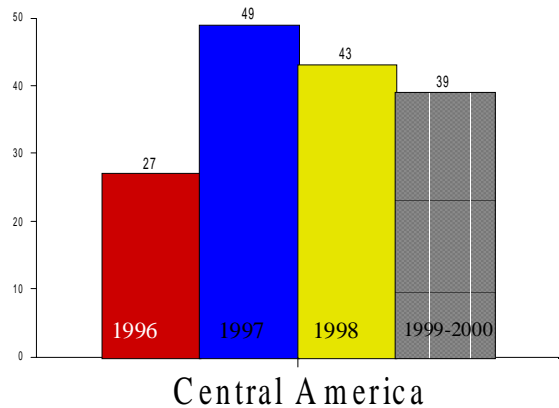
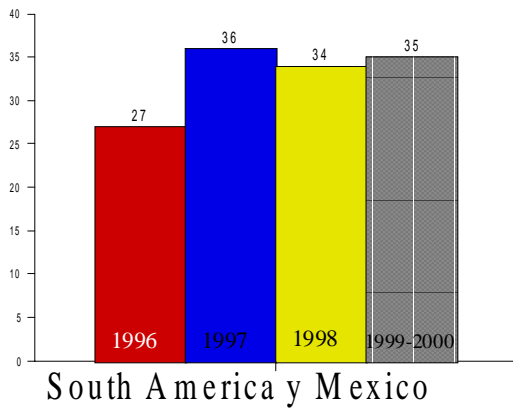
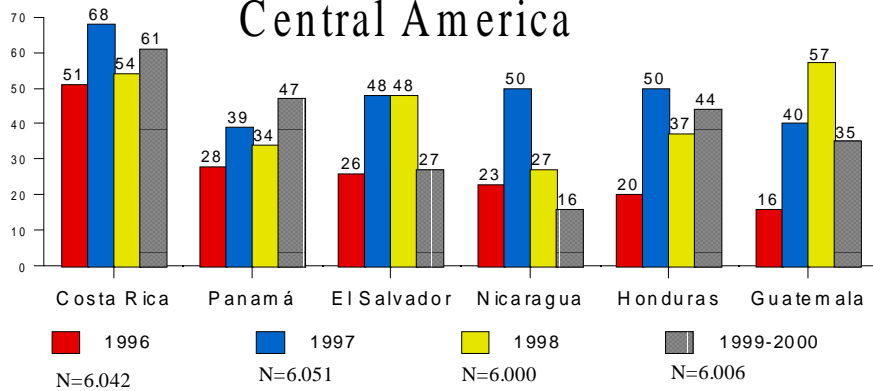
Source: Latinobarometro 1996 - 2000

Satisfaction with Democracy

South America & Mexico



Central America



Q. En general; In general, would you say that you are very satisfied, fairly satisfied, not very satisfied or not at all satisfied with the way democracy works in [country]?

Here the amount of "Very satisfied" and "Fairly satisfied"

Source: Latinobarometro
1996 - 2000

Support and Satisfaction for Democracy

Comparisons among continents

	SUPPORT	SATISFACTION	NET SUPPORT FOR DEMOCRACY
INDIA*	60%	40%	20%
EAST EUROPE*	53%	29%	24%
LATINOBAROMETRO*	60%	37%	23%
EUROPEAN UNION*	78%	53%	25%
AFROBAROMETER*	67%	54%	13%

*INDIA, CSDS

NEW DEMOCRACIES BAROMETER: 9 countries

Bulgaria, Czech Republic, Slovakia, Hungary, Poland, Romania, Slovenia, Belarus, Ukraine.

LATINOBAROMETRO: 17 countries

EUROBAROMETER

AFROBAROMETER : 7 countries

Botswana, Lesotho, Malawi, Namibia, South africa, Zambia, Zimbabwe

Net Legitimacy of Democracy

Latin America, Europe & Africa

	DEMOCRACY	NET LEGITIMACY	
	Support	Satisfaction	Unsatisfied Democrats
EUROPEAN UNION*	78%	53%	+25%
SOUTHERN EUROPE*	84%	57%	+27%
LATIN AMERICA**	60%	37%	+23%
SUB SAHARAN AFRICA***	64%	48%	+16%

* EUROBAROMETER

**LATINOBAROMETRO

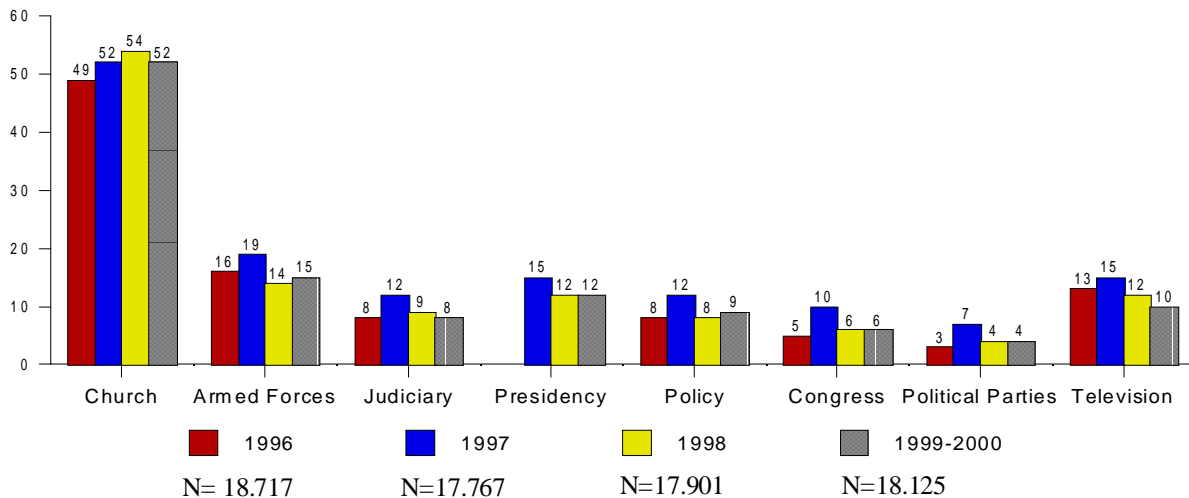
***SUB SAHARAN AFRICA, GHANA, ZAMBIA, SOUTH AFRICA

CONFIDENCE IN INSTITUTIONS

Confidence in institutions, except for the Church, is lower in Latina America than Europe and USA

Confidence in Institutions

Latin America Totals



Source: Latinobarometro
1996 - 2000

Q. Please look at this card and tell me how much confidence you have in each of the following groups, institutions or persons mentioned on the list: a lot, some, a little or no confidence?

Confidence in Institutions

Europe, Africa & Latin America

	EAST EUROPE*	AFRO**	LATINO***
		BAROMETER	BAROMETER
CHURCH	41%	--	78%
PRESIDENT	40%	51%	38%
ARMED FORCES	44%	65%	35%
COURTS	37%	54%	35%
PARLIAMENT	31%	40%	28%
POLITICAL PARTIES	28%	--	20%
TRUST IN PEOPLE	29%	25%	16%

*NEW DEMOCRACIES BAROMETER: 9 countries

Bulgaria, Czech Republic, Slovakia, Hungary, Poland, Romania, Slovenia, Belarus, Ukraine.

** AFROBAROMETER : 7 countries

Botswana, Lesotho, Malawi, Namibia, South africa, Zambia, Zimbabwe

*** LATINOBAROMETRO

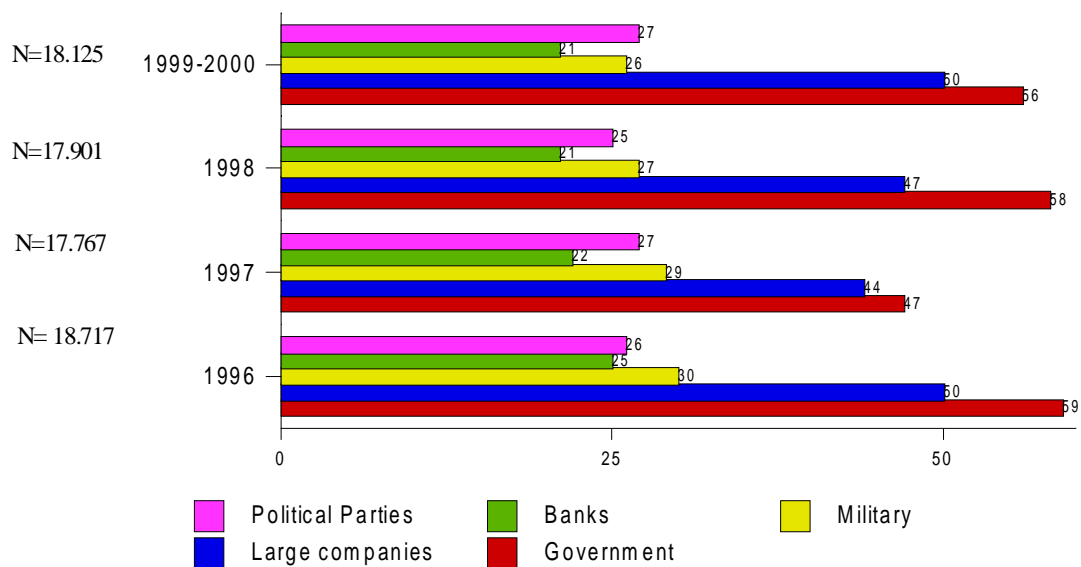
	USA *	EUROPEAN UNION **
TRUST IN PEOPLE	50%	65%

* Wall Street Journal, 1997

** EUROBAROMETER

Who has the most power?

Latin America Totals



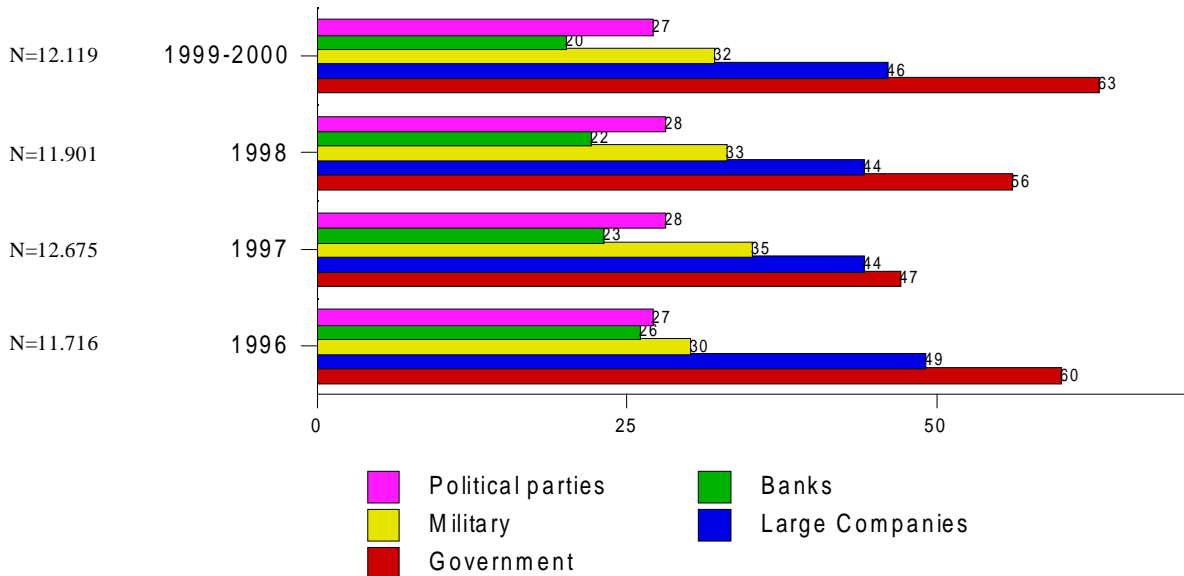
Q. Who do you think has the most power in [country]?
 Here only the totals of "Government", "Large companies", "Military", "Political Parties" and "Bank"

Source: Latinobarometro
 1996 - 2000

Who has the most power?

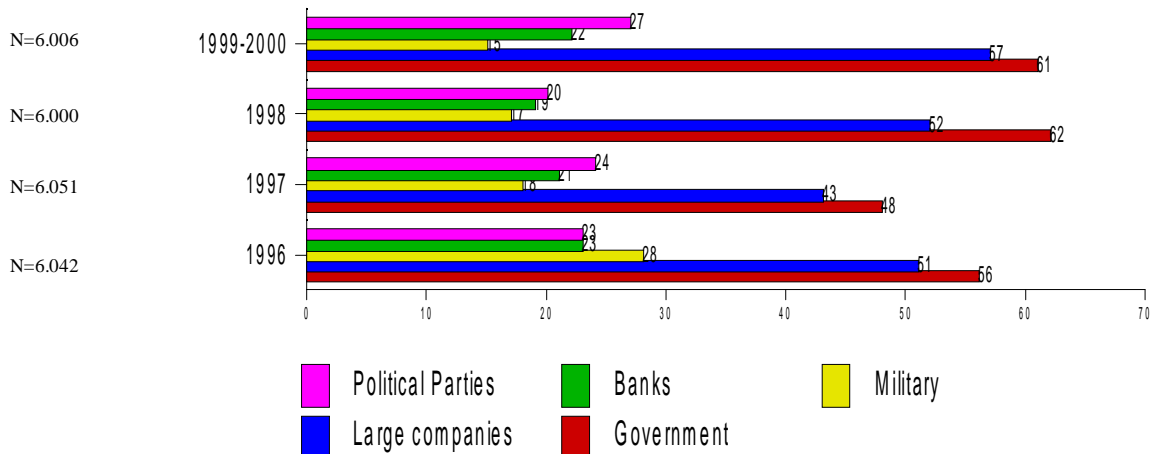
South America & Mexico

Totals



Central America

Totals



Q. Who do you think has the most power in [country]?
 Here only the totals of "Government", "Large companies", "Military", "Political Parties" and "Bank"

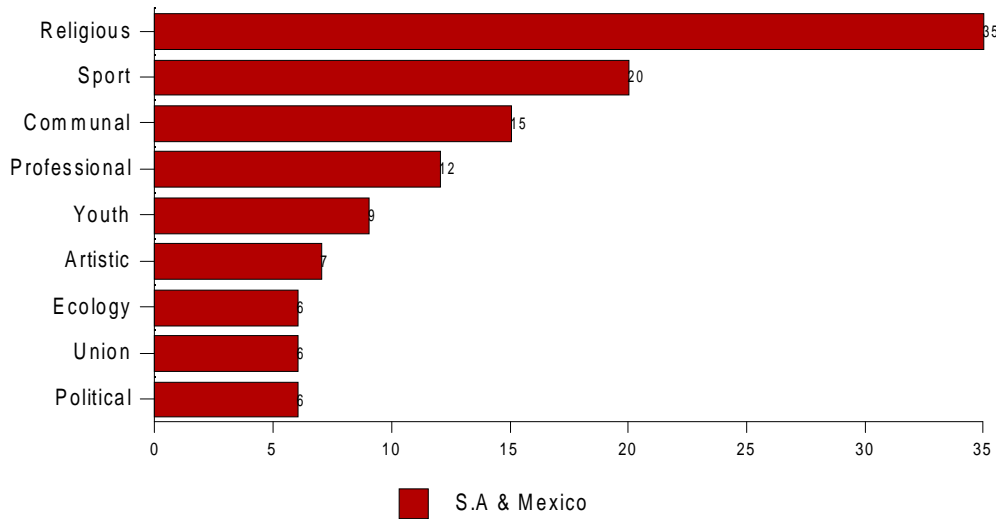
Source: Latinobarometro
 1996 - 2000

PARTICIPATION

Except for the Church participation is low
in Latin America

Participation

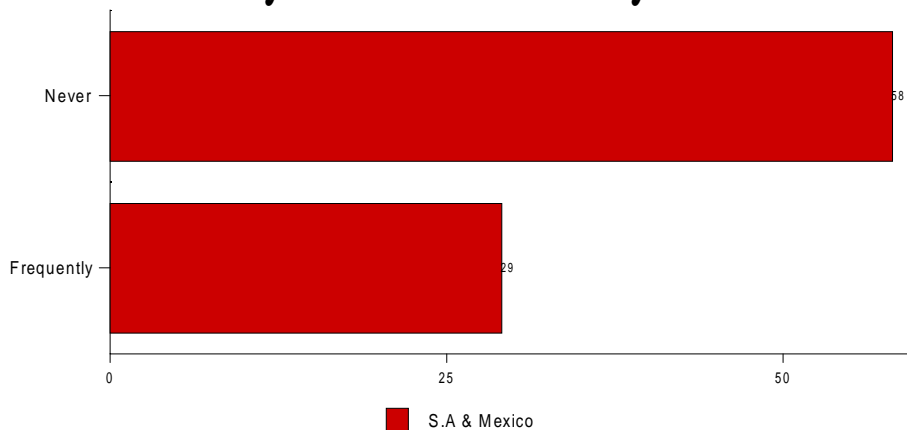
Kind of organization that you work



Q. What kind of organisation do you work for?

Source: Latinobarometro 1998
N=11,901

Work for an issue that effects you or your community

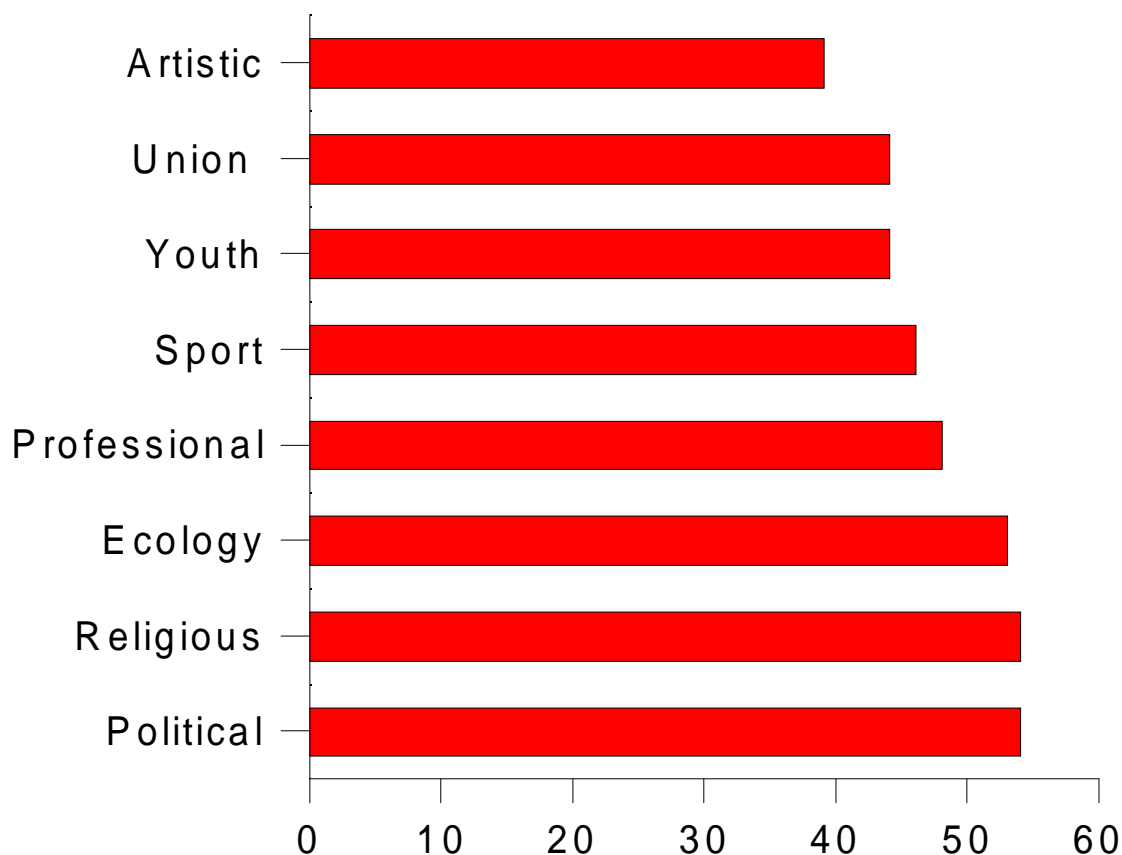


Q. How frequently do you work for an issue that effects you or your community?
Here is the amount of "very frequently" with "frequently" and "hardly ever" with "never"

Source: Latinobarometro 1998

Kind of organization that your participation has an influence

South America & Mexico



Q. Irrespective of your last answer, in what kind of organizations do you believe that the participation of people like you can make some difference?

Source: Latinobarometro 1998
N=11,901