



The Committee of **Seventy**

*Good government. Fair elections. Informed citizens*



# 2009 Citizen's Guide

Election and Political Information for Southeastern Pennsylvania

**Committee of Seventy** 8 Penn Center, Suite 1002, 1628 JFK Boulevard, Phila., PA 19103  
Phone: 215.557.3600 • Fax: 215.557.3608 • [info@seventy.org](mailto:info@seventy.org) • [www.seventy.org](http://www.seventy.org)

sponsored by





## Committee of **Seventy**

*Good government. Fair elections. Informed citizens.*

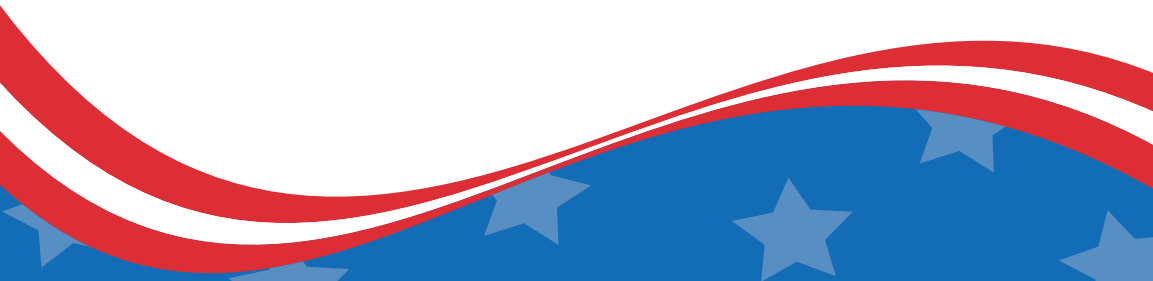
The Committee of Seventy is committed to:

- **Campaign Finance Reform:** Seventy led the successful battle to protect Philadelphia's campaign finance ordinance during its first test in 2007. We continue to fight for tough contribution limits to diminish the opportunity for "pay-to-play" politics. In January 2009, we submitted hard-hitting recommendations to strengthen the ordinance to Mayor Nutter's Task Force on Ethics and Campaign Finance Reform – a group suggested by Seventy. Read our *Roadmap to Reform* on [www.seventy.org](http://www.seventy.org).
- **Making Government Work:** Seventy focuses on ways to make government more lean, efficient and cost-effective. During the current economic crisis, we are following up on our successful push for more flexibility in City employment by recommending other improvements in Philadelphia's operations and finances.
- **Voter Assistance:** Seventy's Voter Assistance Program is the nation's largest, most sophisticated and most effective non-partisan local voter protection operation. During 2008, more than 1,800 citizen volunteers worked under Seventy's banner to answer voters' questions, solve problems at the polls and make sure that every vote counted in the historic Presidential election.
- **Integrity in Government:** Clean government is critical to attracting and retaining businesses and residents. Seventy's ambitious "Ethics Agenda," which was embraced by Mayor Nutter and submitted to his Task Force, is the blueprint for reforms that will bring about more transparent and accountable government.
- **Reviving Democracy:** Education is the key to involving more citizens in voting and in political life. Our website is filled with information ranging from voter registration and absentee ballot deadlines to election results and polling place locations. Watch for announcements about our workshops on how to run for political office.

**The Committee of Seventy Needs Your Help.**

**CONTRIBUTE! VOLUNTEER!**

**[www.seventy.org](http://www.seventy.org)**



# IMPORTANT 2009 PENNSYLVANIA ELECTION DATES

|   |                   |
|---|-------------------|
| First day to circulate and file nomination petitions  | February 17       |
| Last day to circulate and file nomination petitions   | March 10          |
| First day to circulate and file nomination papers   | March 11          |
| Last day for withdrawal by candidates who filed nomination petitions  | March 25          |
| Last day to REGISTER before the primary   | April 20          |
| Last day to apply for civilian absentee ballot  | May 12            |
| Last day for County Board of Elections to receive voted civilian absentee ballots   | May 15            |
| <b>MUNICIPAL PRIMARY</b>  | <b>May 19</b>     |
| First day to REGISTER after primary   | May 20            |
| Last day for County Board of Elections to receive voted military and overseas absentee ballots<br>(Must be postmarked by May 18)        | May 26            |
| Last day to circulate and file nomination papers  | August 3          |
| Last day for withdrawal by candidates nominated by nomination papers  | August 10         |
| Last day for withdrawal by candidates nominated at the primary  | August 10         |
| Last day to REGISTER to vote before November election   | October 5         |
| Last day to apply for civilian absentee ballot  | October 27        |
| Last day for the County Board of Elections to receive voted civilian absentee ballot  | October 30        |
| <b>MUNICIPAL ELECTION</b>   | <b>November 3</b> |
| First day to REGISTER after the November Election   | November 4        |
| Last day for the County Board of Elections to receive voted military or overseas absentee ballots<br>(must be postmarked by November 2) | November 10       |

# 2009 PHILADELPHIA ELECTION CONTESTS

## Elected Official

### MUNICIPAL OFFICES

- DISTRICT ATTORNEY
- CITY CONTROLLER

### POLLING PLACE OFFICIALS

- JUDGE OF ELECTION
- INSPECTOR OF ELECTION (MAJORITY AND MINORITY)

### JUDICIAL OFFICES

- PENNSYLVANIA SUPREME COURT
- PENNSYLVANIA SUPERIOR COURT
- PENNSYLVANIA COMMONWEALTH COURT
- PHILADELPHIA COURT OF COMMON PLEAS
- PHILADELPHIA MUNICIPAL COURT

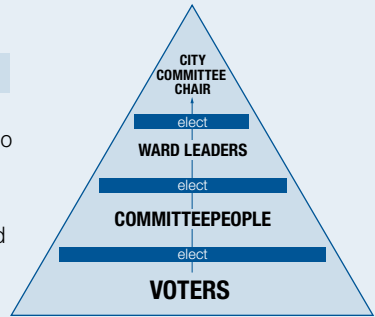
# UNDERSTANDING PHILADELPHIA'S POLITICAL STRUCTURE

## DIVISIONS

Philadelphia is divided into over 1,600 divisions, which are the smallest political units of the City and should contain no fewer than 100 and no more than 1,200 registered voters. Each division is represented by Democratic and Republican committeepeople who are elected by voters of the same party who live in the same division. Committeepeople elect their party's ward leader and participate in ward meetings to share the concerns of the people who live in their division.

## WARDS

Philadelphia is divided into 66 wards, which are the second smallest units of the City and contain no fewer than 10 and no more than 50 divisions. Ward leaders are elected by their party's committeepeople of each division. Ward leaders are also members of the City Committee of their respective party organizations, which represents the organization and management of the party in all Philadelphia elections.



## CITY COUNCIL DISTRICTS

Philadelphia is divided into 10 Councilmanic districts. Voters within each district elect one individual to represent them in Philadelphia City Council, the legislative arm of municipal government. There are also seven “at-large” members of Philadelphia City Council who are elected by voters city-wide and represent the city as a whole. Each voter may vote for a maximum of five “at-large” City Council candidates. No more than 5 candidates may be elected for Council-at-large seats by any one party or political body.

## STATE SENATE AND HOUSE DISTRICTS

Pennsylvania is divided into 50 Senatorial districts and 203 House districts. Each district elects one individual to represent them in both the state Senate and the state House of Representatives. Seven of the 50 Senatorial districts and 28 of the 203 House districts include Philadelphia residents. Reapportionments are done every 10 years (after each federal census) to ensure that each district is as nearly equal in population as possible.

Together the state Senate and state House of Representatives form the Pennsylvania General Assembly, which is the legislative branch of state government.

## UNITED STATES SENATE AND HOUSE DISTRICTS

Pennsylvania is represented by 19 individuals in the 435-member United States House of Representatives—four are elected from districts containing Philadelphia residents. House seats are apportioned on the basis of population. Pennsylvania also has two representatives in the 100-member United States Senate, each of whom is elected statewide. Every state has two Senators, regardless of population.

Together the Senate and House form the United States Congress, which represents the legislative branch of the federal government.

# Who Represents You in Pennsylvania

Bureau of Commissions, Elections and Legislation: (717) 787-5280

Voter Registration: [www.votespa.com](http://www.votespa.com)

**NOTE:** These elected officials represent all Pennsylvania residents.

| Title                      | Name                             | Party    | Main Contact Information   | Local Contact Information   |
|----------------------------|----------------------------------|----------|--|---|
| <b>FEDERAL OFFICES</b>     |                                  |          |  |   |
| <b>U. S. Senator</b>       | Arlen<br><b>SPECTER</b>          | <b>R</b> | 711 Hart Building<br>Washington, DC 20510<br>P: (202) 224-4254 F: (202) 228-1229<br><a href="http://specter.senate.gov">http://specter.senate.gov</a>  | 600 Arch Street, Suite 9400<br>Philadelphia, PA 19106<br>P: (215) 597-7200 F: (215) 597-0406  |
| <b>U. S. Senator</b>       | Robert P.<br><b>CASEY, JR.</b>   | <b>D</b> | 383 Russell Senate Office Building<br>Washington, DC 20510<br>P: (202) 224-6324 F: (202) 228-0604<br><a href="http://casey.senate.gov">http://casey.senate.gov</a>   | 2000 Market Street, Suite 1870<br>Philadelphia, PA 19103<br>P: (215) 405-9660 F: (215) 405-9669   |
| <b>STATE OFFICES</b>       |                                  |          |  |   |
| <b>Governor</b>            | Edward G.<br><b>RENDELL</b>      | <b>D</b> | 225 Main Capitol Building<br>Harrisburg, PA 17120<br>P: (717) 787-2500 F: (717) 772-8284<br><a href="http://www.governor.state.pa.us">http://www.governor.state.pa.us</a>                                    | 200 South Broad Street, 11th Floor<br>Philadelphia, PA 19102<br>P: (215) 560-2640 F: (215) 560-3458   |
| <b>Lieutenant Governor</b> | Joseph B.<br><b>SCARNATI III</b> | <b>R</b> | Senate Box 203025, 292 Main Capitol<br>Harrisburg, PA 17120<br>P: (717) 787-7084 F: (717) 772-2755<br><a href="http://www.ltgovernor.state.pa.us">http://www.ltgovernor.state.pa.us</a>                      | 410 Main Street<br>Brockway, PA 15824<br>P: (814) 265-2030 F: (814) 265-2040  |
| <b>Attorney General</b>    | Tom<br><b>CORBETT</b>            | <b>R</b> | PA Office of Attorney General<br>16th Floor, Strawberry Square<br>Harrisburg, PA 17120<br>P: (717) 787-3391 F: (717) 787-8242<br><a href="http://www.attorneygeneral.gov">http://www.attorneygeneral.gov</a> | 21 South 12th Street, 3rd Floor<br>Philadelphia, PA 19107<br>P: (215) 560-2402 F: (215) 560-1031  |
| <b>Auditor General</b>     | Jack<br><b>WAGNER</b>            | <b>D</b> | 229 Finance Building<br>Harrisburg, PA 17120-0018<br>P: (717) 787-2543 F: (717) 783-4407<br><a href="http://www.auditorgen.state.pa.us">http://www.auditorgen.state.pa.us</a>                                | Department of the Auditor General<br>Philadelphia State Office Building<br>1400 Spring Garden Street, Room 803<br>Philadelphia, PA 19130<br>P: (215) 560-1695 F: (215) 560-3093 |
| <b>State Treasurer</b>     | Rob<br><b>MCCORD</b>             | <b>D</b> | 129 Finance Building<br>Harrisburg, PA 17120<br>P: (717) 787-2465 F: (717) 783-9760<br><a href="http://www.patreasury.org">http://www.patreasury.org</a>   |   |

# Who Represents You in Philadelphia

City of Philadelphia Information: (215) 686-1776 or 3-1-1 [www.phila.gov](http://www.phila.gov)

Philadelphia County Board of Elections: (215) 686-3469 [www.phillyelection.com](http://www.phillyelection.com)

Voter Registration: (215) 686-1500/1505

| Title                       | District | Name                   | Party    | Main Contact Information   | Local Contact Information   |
|-----------------------------|----------|------------------------|----------|--|---|
| <b>FEDERAL OFFICES</b>      |          |                        |          |  |   |
| <b>U. S. Representative</b> | <b>1</b> | Robert<br><b>BRADY</b> | <b>D</b> | 206 Cannon House Office Building<br>Washington, DC 20515<br>P: (202) 225-4731 F: (202) 225-0088<br><a href="http://www.house.gov/robertbrady">http://www.house.gov/robertbrady</a> | 1907-09 South Broad Street<br>Philadelphia, PA 19148<br>P: (215) 389-4627 F: (215) 389-4636 |
| <b>U. S. Representative</b> | <b>2</b> | Chaka<br><b>FATTAH</b> | <b>D</b> | 2301 Rayburn House Office Building<br>Washington, DC 20515<br>P: (202) 225-4001 F: (202) 225-5392<br><a href="http://www.house.gov/fattah">http://www.house.gov/fattah</a>         | 4104 Walnut Street<br>Philadelphia, PA 19104<br>P: (215) 387-6404 F: (215) 387-6407         |

| Title | District | Name | Party | Main Contact Information | Local Contact Information |
|-------|----------|------|-------|--------------------------|---------------------------|
|-------|----------|------|-------|--------------------------|---------------------------|

## FEDERAL OFFICES

|                             |           |                            |          |  |  |
|-----------------------------|-----------|----------------------------|----------|--|--|
| <b>U. S. Representative</b> | <b>8</b>  | Patrick J. <b>MURPHY</b>   | <b>D</b> | 1609 Longworth HOB<br>Washington, DC 20515<br>P: (202) 225-4276 F: (202) 225-9511<br><a href="http://www.patrickmurphy.house.gov">http://www.patrickmurphy.house.gov</a> | 414 Mill Street<br>Bristol, PA 19007<br>P: (215) 826-1963 F: (215) 826-1997            |
| <b>U. S. Representative</b> | <b>13</b> | Allyson Y. <b>SCHWARTZ</b> | <b>D</b> | 330 Cannon Office Building<br>Washington, DC 20515<br>P: (202) 225-6111 F: (202) 226-0611<br><a href="http://schwartz.house.gov">http://schwartz.house.gov</a>           | 7219 Frankford Avenue<br>Philadelphia, PA 19135<br>P: (215) 335-3355 F: (215) 333-4508 |

## STATE OFFICIALS

|                             |            |  |          |  |   |
|-----------------------------|------------|--|----------|--|---|
| <b>State Senator</b>        | <b>1</b>   | Lawrence M. <b>FARNESE, Jr.</b>        | <b>D</b> | Senate Box 203001<br>Harrisburg, PA 17120-3001<br>P: (717) 787-5662 F: (717) 787-4531<br><a href="http://www.senatorfarnese.com">http://www.senatorfarnese.com</a>                 | 419 S. Second Street, Suite 200<br>Philadelphia, PA 19147<br>P: (215) 560-1313 F: (215) 560-2688                  |
| <b>State Senator</b>        | <b>2</b>   | Christine M. (Tina) <b>TARTAGLIONE</b> | <b>D</b> | Senate Box 203002<br>Harrisburg, PA 17120-3002<br>P: (717) 787-1141 F: (717) 787-7439<br><a href="http://www.pasenate.com/tartaglione">http://www.pasenate.com/tartaglione</a>     | 1061 Bridge Street<br>Philadelphia, PA 19124<br>P: (215) 533-0440 F: (215) 560-2627                               |
| <b>State Senator</b>        | <b>3</b>   | Shirley M. <b>KITCHEN</b>              | <b>D</b> | Senate Box 203003<br>Harrisburg, PA 17120-3003<br>P: (717) 787-6735 F: (717) 772-0581<br><a href="http://www.senatorkitchen.com">http://www.senatorkitchen.com</a>                 | 1701 West Lehigh Avenue, Suite 104<br>Philadelphia, PA 19132<br>P: (215) 227-6161 F: (215) 560-1316               |
| <b>State Senator</b>        | <b>4</b>   | Leanna M. <b>WASHINGTON</b>            | <b>D</b> | Senate Box 203004<br>Harrisburg, PA 17120-3004<br>P: (717) 787-1427 F: (717) 787-0572<br><a href="http://www.senatorwashington.com">http://www.senatorwashington.com</a>           | 1555-A Wadsworth Avenue<br>Philadelphia, PA 19150<br>P: (215) 242-0472 F: (215) 753-4538                          |
| <b>State Senator</b>        | <b>5</b>   | Michael J. <b>STACK III</b>            | <b>D</b> | Senate Box 203005<br>Harrisburg, PA 17120<br>P: (717) 787-9608 F: (717) 772-2162<br><a href="http://www.senatorstack.com">http://www.senatorstack.com</a>                          | 12361 Academy Road<br>Philadelphia, PA 19154-1927<br>P: (215) 281-2539 F: (215) 281-2798                          |
| <b>State Senator</b>        | <b>7</b>   | Vincent J. <b>HUGHES</b>               | <b>D</b> | Senate Box 203007<br>Harrisburg, PA 17120-3007<br>P: (717) 787-7112 F: (717) 772-0579<br><a href="http://www.senatorhughes.com">http://www.senatorhughes.com</a>                   | 4601 Market Street, 1st Floor<br>Philadelphia, PA 19139-4616<br>P: (215) 471-0490 F: (215) 560-3434               |
| <b>State Senator</b>        | <b>8</b>   | Anthony H. <b>WILLIAMS</b>             | <b>D</b> | Senate Box 203008<br>Harrisburg, PA 17120-3008<br>P: (717) 787-5970 F: (717) 787-0574<br><a href="http://www.senatoranthonywilliams.com">http://www.senatoranthonywilliams.com</a> | 6630 Lindbergh Blvd., Suite 1<br>Philadelphia, PA 19142<br>P: (215) 492-2980 F: (215) 492-2990                    |
| <b>State Representative</b> | <b>152</b> | Thomas P. <b>MURT</b>                  | <b>R</b> | P.O. Box 202152<br>Harrisburg, PA 17120-2152<br>P: (717) 787-6886 F: (717) 260-6500<br><a href="http://www.repmurt.com">http://www.repmurt.com</a>                                 | 19 South York Road<br>Hatboro, PA 19040<br>P: (215) 674-3755 F: (215) 674-3021                                    |
| <b>State Representative</b> | <b>154</b> | Lawrence H. <b>CURRY</b>               | <b>D</b> | P.O. Box 202154<br>Harrisburg, PA 17120-2154<br>P: (717) 783-1079 F: (717) 787-2713<br><a href="http://www.pahouse.com/curry">http://www.pahouse.com/curry</a>                     | 1 Jenkintown Station, Suite 211<br>115 West Avenue<br>Jenkintown, PA 19046<br>P: (215) 572-5210 F: (215) 517-1423 |
| <b>State Representative</b> | <b>169</b> | Dennis M. <b>O'BRIEN</b>               | <b>R</b> | P.O. Box 202169<br>Harrisburg, PA 17120-2169<br>P: (717) 787-4610 F: (717) 787-1339<br><a href="http://www.repobrien.com">http://www.repobrien.com</a>                             | 9811 Academy Road, Lower Level<br>Philadelphia, PA 19114-1715<br>P: (215) 632-5150 F: (215) 281-2094              |
| <b>State Representative</b> | <b>170</b> | Brendan F. <b>BOYLE</b>                | <b>D</b> | P.O. Box 202170<br>Harrisburg, PA 17120-2170<br>P: (717) 787-3055 F: (717) 772-9861<br><a href="http://www.pahouse.com/boyle">http://www.pahouse.com/boyle</a>                     | 14230 Bustleton Avenue<br>Philadelphia, PA 19116<br>P: (215) 676-0300 F: (267) 988-6257                           |

## Who Represents You in Philadelphia (continued)

| Title                | District | Name                         | Party | Main Contact Information   | Local Contact Information   |
|----------------------|----------|------------------------------|-------|--|---|
| State Representative | 172      | John M. <b>PERZEL</b>        | R     | P.O. Box 202172<br>Harrisburg, PA 17120-2172<br>P: (717) 787-2016 F: (717) 783-7225<br><a href="http://www.johnperzel.com">http://www.johnperzel.com</a>               | 7518 Frankford Avenue<br>Philadelphia, PA 19136<br>P: (215) 331-2600 F: (215) 708-3135                            |
| State Representative | 173      | Michael P. <b>McGEEHAN</b>   | D     | P.O. Box 202173<br>Harrisburg, PA 17120-2173<br>P: (717) 772-4029 F: (717) 787-4923<br><a href="http://www.pahouse.com/mcgeeahan">http://www.pahouse.com/mcgeeahan</a> | 7731 Frankford Avenue<br>Philadelphia, PA 19136<br>P: (215) 333-9760 F: (215) 333-5891                            |
| State Representative | 174      | John P. <b>SABATINA, JR.</b> | D     | P.O. Box 202174<br>Harrisburg, PA 17120-2174<br>P: (717) 772-4032 F: (717) 783-1579<br><a href="http://www.pahouse.com/sabatina">http://www.pahouse.com/sabatina</a>   | 8100 Castor Avenue<br>Philadelphia, PA 19152<br>P: (215) 342-6204 F: (215) 342-6207                               |
| State Representative | 175      | Michael H. <b>O'BRIEN</b>    | D     | P.O. Box 202175<br>Harrisburg, PA 17120-2175<br>P: (717) 783-8098 F: (717) 780-4787<br><a href="http://www.pahouse.com/obrien">http://www.pahouse.com/obrien</a>       | 610 North 2nd Street<br>Philadelphia, PA 19123<br>P: (215) 503-3245 F: (215) 503-7850                             |
| State Representative | 177      | John <b>TAYLOR</b>           | D     | P.O. Box 202177<br>Harrisburg, PA 17120-2177<br>P: (717) 787-3179 F: (717) 705-1850<br><a href="http://www.reptaylor.com">http://www.reptaylor.com</a>                 | 4725 Richmond Street<br>Philadelphia, PA 19137<br>P: (215) 744-2600 F: (215) 744-2605                             |
| State Representative | 179      | Tony J. <b>PAYTON, JR.</b>   | D     | P.O. Box 202179<br>Harrisburg, PA 17120-2179<br>P: (717) 787-1354 F: (717) 780-4789<br><a href="http://www.pahouse.com/payton">http://www.pahouse.com/payton</a>       | 4509 Frankford Avenue<br>Philadelphia, PA 19124<br>P: (215) 744-7901 F: (215) 744-7906                            |
| State Representative | 180      | Angel <b>CRUZ</b>            | D     | P.O. Box 202180<br>Harrisburg, PA 17120-2180<br>P: (717) 787-1407 F: (717) 780-4769<br><a href="http://www.pahouse.com/cruz">http://www.pahouse.com/cruz</a>           | 2749 North 5th Street<br>Philadelphia, PA 19133<br>P: (215) 291-5643 F: (215) 291-5647                            |
| State Representative | 181      | W. Curtis <b>THOMAS</b>      | D     | P.O. Box 202181<br>Harrisburg, PA 17120-2181<br>P: (717) 787-9471 F: (717) 787-7297<br><a href="http://www.pahouse.com/thomas">http://www.pahouse.com/thomas</a>       | 1348 West Girard Avenue<br>Philadelphia, PA 19123<br>P: (215) 232-1210 F: (215) 232-1203                          |
| State Representative | 182      | Babette <b>JOSEPHS</b>       | D     | P.O. Box 202182<br>Harrisburg, PA 17120-2182<br>P: (717) 787-8529 F: (717) 787-5066<br><a href="http://www.pahouse.com/josephs">http://www.pahouse.com/josephs</a>     | 1528 Walnut Street, Suite 501<br>Philadelphia, PA 19102<br>P: (215) 893-1515 F: (215) 560-5816                    |
| State Representative | 184      | William F. <b>KELLER</b>     | D     | P.O. Box 202184<br>Harrisburg, PA 17120-2184<br>P: (717) 787-5774 F: (717) 705-2088<br><a href="http://www.pahouse.com/keller">http://www.pahouse.com/keller</a>       | 1531 South Second Street<br>Philadelphia, PA 19147<br>P: (215) 271-9190 F: (215) 952-1025                         |
| State Representative | 185      | Robert C. <b>DONATUCCI</b>   | D     | P.O. Box 202185<br>Harrisburg, PA 17120-2185<br>P: (717) 783-8634 F: (717) 772-9888<br><a href="http://www.pahouse.com/donatucci">http://www.pahouse.com/donatucci</a> | PFN Building<br>1809-13 Oregon Avenue, Suite 201<br>Philadelphia, PA 19145<br>P: (215) 468-1515 F: (215) 952-1164 |
| State Representative | 186      | Kenyatta J. <b>JOHNSON</b>   | D     | P.O. Box 202186<br>Harrisburg, PA 17120-2186<br>P: (717) 783-1792 F: (717) 787-7172<br><a href="http://www.pahouse.com/johnson">http://www.pahouse.com/johnson</a>     | 1610 South Broad Street<br>Philadelphia, PA 19146<br>P: (215) 952-3378 F: (215) 952-1141                          |
| State Representative | 188      | James R. <b>ROEBUCK, JR.</b> | D     | P.O. Box 202188<br>Harrisburg, PA 17120-2188<br>P: (717) 783-1000 F: (717) 783-1665<br><a href="http://www.pahouse.com/roebuck">http://www.pahouse.com/roebuck</a>     | 4712 Baltimore Avenue<br>Philadelphia, PA 19143<br>P: (215) 724-2227 F: (215) 724-2230                            |
| State Representative | 190      | Vanessa Lowery <b>BROWN</b>  | D     | P.O. Box 202190<br>Harrisburg, PA 17120-2190<br>P: (717) 783-3822 F: (717) 772-2384<br><a href="http://www.pahouse.com/brown">http://www.pahouse.com/brown</a>         | 4706 Westminster Avenue<br>Philadelphia, PA 19131<br>P: (215) 879-6615 F: (215) 879-6616                          |

| Title                | District | Name                             | Party | Main Contact Information   | Local Contact Information   |
|----------------------|----------|----------------------------------|-------|--|---|
| State Representative | 191      | Ronald G. <b>WATERS</b>          | D     | P.O. Box 202191<br>Harrisburg, PA 17120-2191<br>P: (717) 772-9850 F: (717) 783-1516<br><a href="http://www.pahouse.com/waters">http://www.pahouse.com/waters</a>         | 6027 Ludlow Street, Unit A<br>Philadelphia, PA 19139<br>P: (215) 748-6712 F: (215) 748-1687       |
| State Representative | 192      | Louise Williams<br><b>BISHOP</b> | D     | P.O. Box 202192<br>Harrisburg, PA 17120-2192<br>P: (717) 783-2192 F: (717) 787-2960<br><a href="http://www.pahouse.com/bishop">http://www.pahouse.com/bishop</a>         | 1991 North 63rd Street<br>Philadelphia, PA 19151<br>P: (215) 879-6625 F: (215) 879-8566           |
| State Representative | 194      | Kathy<br><b>MANDERINO</b>        | D     | P.O. Box 202194<br>Harrisburg, PA 17120-2194<br>P: (717) 787-1254 F: (717) 780-4770<br><a href="http://www.pahouse.com/manderino">http://www.pahouse.com/manderino</a>   | 6511 Ridge Avenue<br>Philadelphia, PA 19128<br>P: (215) 482-8726 F: (215) 482-9066                |
| State Representative | 195      | Frank Louis<br><b>OLIVER</b>     | D     | P.O. Box 202195<br>Harrisburg, PA 17120-2195<br>P: (717) 787-3480 F: (717) 783-0684<br><a href="http://www.pahouse.com/oliver">http://www.pahouse.com/oliver</a>         | 2839 West Girard Avenue<br>Philadelphia, PA 19130<br>P: (215) 684-3738 F: (215) 235-4629          |
| State Representative | 197      | Jewell<br><b>WILLIAMS</b>        | D     | P.O. Box 202197<br>Harrisburg, PA 17120-2197<br>P: (717) 772-2004 F: (717) 787-7597<br><a href="http://www.pahouse.com/williams">http://www.pahouse.com/williams</a>     | 2220 North Broad Street<br>Philadelphia, PA 19132<br>P: (215) 763-2559 F: (215) 763-2561          |
| State Representative | 198      | Rosita C.<br><b>YOUNGBLOOD</b>   | D     | P.O. Box 202198<br>Harrisburg, PA 17120-2198<br>P: (717) 787-7727 F: (717) 772-1313<br><a href="http://www.pahouse.com/youngblood">http://www.pahouse.com/youngblood</a> | 5736 Greene Street<br>Philadelphia, PA 19144<br>P: (215) 849-6426 F: (215) 849-5476               |
| State Representative | 200      | Cherelle L.<br><b>PARKER</b>     | D     | P.O. Box 202200<br>Harrisburg, PA 17120-2200<br>P: (717) 783-2178 F: (717) 783-7548<br><a href="http://www.pahouse.com/parker">http://www.pahouse.com/parker</a>         | 1536 East Wadsworth Avenue<br>Philadelphia, PA 19150<br>P: (215) 242-7300 F: (215) 242-7303       |
| State Representative | 201      | John<br><b>MYERS</b>             | D     | P.O. Box 202201<br>Harrisburg, PA 17120-2201<br>P: (717) 787-3181 F: (717) 772-4038<br><a href="http://www.pahouse.com/myers">http://www.pahouse.com/myers</a>           | 5847 Germantown Avenue<br>Philadelphia, PA 19144<br>P: (215) 849-6896 F: (215) 560-1824           |
| State Representative | 202      | Mark B.<br><b>COHEN</b>          | D     | P.O. Box 202202<br>Harrisburg, PA 17120-2202<br>P: (717) 787-4117 F: (717) 787-6650<br><a href="http://www.pahouse.com/cohen">http://www.pahouse.com/cohen</a>           | 6001 North 5th Street, 2nd Floor<br>Philadelphia, PA 19120<br>P: (215) 924-0895 F: (215) 924-8480 |
| State Representative | 203      | Dwight<br><b>EVANS</b>           | D     | P.O. Box 202203<br>Harrisburg, PA 17120-2203<br>P: (717) 783-1540 F: (717) 787-2334<br><a href="http://www.pahouse.com/evans">http://www.pahouse.com/evans</a>           | 7174 Ogontz Avenue<br>Philadelphia, PA 19138<br>P: (215) 549-0220 F: (215) 549-8965               |

| Title | Name | Party | Contact Information |
|-------|------|-------|---------------------|
|-------|------|-------|---------------------|

## CITY OFFICIALS

These officials are each elected by and represent the entire city.

|                   |                               |   |   |
|-------------------|-------------------------------|---|---|
| Mayor             | Michael A.<br><b>NUTTER</b>   | D | Room 215, City Hall, Philadelphia, PA 19107<br>P: (215) 686-2182 F: (215) 686-2180<br><a href="http://www.phila.gov/mayor">http://www.phila.gov/mayor</a>                                       |
| District Attorney | Lynne M.<br><b>ABRAHAM</b>    | D | Three South Penn Square, Philadelphia, PA 19107<br>P: (215) 686-8000 F: (215) 563-0047<br><a href="http://www.phila.gov/districtattorney">http://www.phila.gov/districtattorney</a>             |
| City Controller   | Alan L.<br><b>BUTKOVITZ</b>   | D | 1401 JFK Boulevard, 12th Floor, Philadelphia, PA 19102-1679<br>P: (215) 686-6680 F: (215) 686-3832<br><a href="http://www.philadelphiacontroller.org">http://www.philadelphiacontroller.org</a> |
| Register of Wills | Ronald R.<br><b>DONATUCCI</b> | D | Room 180, City Hall, Philadelphia, PA 19107<br>P: (215) 686-6250 F: (215) 686-6268<br><a href="http://secureprod.phila.gov/wills">http://secureprod.phila.gov/wills</a>                         |
| Sheriff           | John D.<br><b>GREEN</b>       | D | 100 South Broad Street, 5th Floor, Philadelphia, PA 19110<br>P: (215) 686-3530 F: (215) 686-3531<br><a href="http://www.phillysheriff.com">http://www.phillysheriff.com</a>                     |



## Who Represents You in Philadelphia (continued)

| Title                            | Name                                   | Party    | Contact Information   |
|----------------------------------|--|----------|---|
| <b>Clerk of Quarter Sessions</b> | Vivian T. <b>MILLER</b>                | <b>D</b> | 1301 Filbert Street, Room 310, Philadelphia, PA 19107<br>P: (215) 683-7700 F: (215) 683-7713<br><a href="http://www.phila.gov/quartersessions">http://www.phila.gov/quartersessions</a> |
| <b>City Commissioner (Chair)</b> | Margaret M. (Marge) <b>TARTAGLIONE</b> | <b>D</b> | City Hall, Room 130, Philadelphia, PA 19107<br>P: (215) 686-3460/3461 F: (215) 587-9107<br><a href="http://www.phillyelection.com">http://www.phillyelection.com</a>                    |
| <b>City Commissioner</b>         | Anthony <b>CLARK</b>                   | <b>D</b> | City Hall, Room 132, Philadelphia, PA 19107<br>P: (215) 686-3462/3463 F: (215) 686-3947<br><a href="http://www.phillyelection.com">http://www.phillyelection.com</a>                    |
| <b>City Commissioner</b>         | Joseph J. <b>DUDA</b>                  | <b>R</b> | City Hall, Room 134, Philadelphia, PA 19107<br>P: (215) 686-3464/3467 F: (215) 686-3472<br><a href="http://www.phillyelection.com">http://www.phillyelection.com</a>                    |

| Title | District | Name | Party | Contact Information |
|-------|----------|------|-------|---------------------|
|-------|----------|------|-------|---------------------|

### **CITY COUNCIL MEMBERS** These officials are each elected by and represent voters within their district.

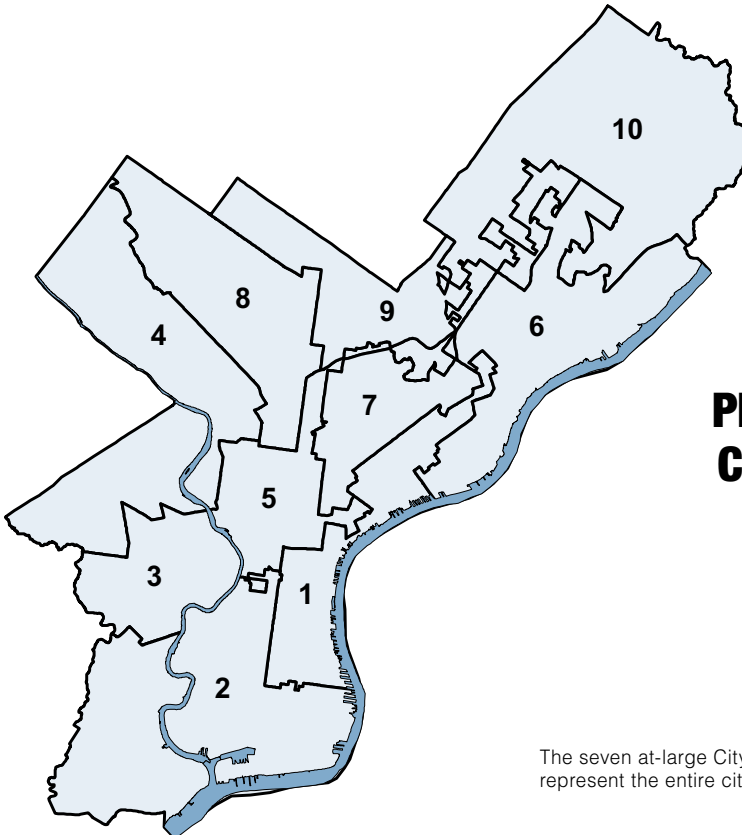
|                               |           |                                  |          |   |
|-------------------------------|-----------|----------------------------------|----------|---|
| <b>Councilman</b>             | <b>1</b>  | Frank <b>DICICCO</b>             | <b>D</b> | City Hall, Room 332, Philadelphia, PA 19107-3290<br>P: (215) 686-3458/3459 F: (215) 686-1931<br><a href="http://www.phila.gov/citycouncil/dicicco">http://www.phila.gov/citycouncil/dicicco</a>     |
| <b>City Council President</b> | <b>2</b>  | Anna C. <b>VERNA</b>             | <b>D</b> | City Hall, Room 405, Philadelphia, PA 19107-3290<br>P: (215) 686-3412/3413 F: (215) 686-1932<br><a href="http://www.phila.gov/citycouncil/verna">http://www.phila.gov/citycouncil/verna</a>         |
| <b>Councilwoman</b>           | <b>3</b>  | Jannie L. <b>BLACKWELL</b>       | <b>D</b> | City Hall, Room 408, Philadelphia, PA 19107-3290<br>P: (215) 686-3418/3419 F: (215) 686-1933<br><a href="http://www.phila.gov/citycouncil/blackwell">http://www.phila.gov/citycouncil/blackwell</a> |
| <b>Councilman</b>             | <b>4</b>  | Curtis <b>JONES, JR.</b>         | <b>D</b> | City Hall, Room 404, Philadelphia, PA 19107-3290<br>P: (215) 686-3416/3417 F: (215) 686-1934<br><a href="http://www.phila.gov/citycouncil/jones">http://www.phila.gov/citycouncil/jones</a>         |
| <b>Councilman</b>             | <b>5</b>  | Darrell L. <b>CLARKE</b>         | <b>D</b> | City Hall, Room 484, Philadelphia, PA 19107-3290<br>P: (215) 686-3442/3443 F: (215) 686-1901<br><a href="http://www.phila.gov/citycouncil/clarke">http://www.phila.gov/citycouncil/clarke</a>       |
| <b>Councilwoman</b>           | <b>6</b>  | Joan L. <b>KRAJEWSKI</b>         | <b>D</b> | City Hall, Room 591, Philadelphia, PA 19107-3290<br>P: (215) 686-3444/3445 F: (215) 686-1935<br><a href="http://www.phila.gov/citycouncil/krajewski">http://www.phila.gov/citycouncil/krajewski</a> |
| <b>Councilwoman</b>           | <b>7</b>  | Maria D. Quiñones <b>SÁNCHEZ</b> | <b>D</b> | City Hall, Room 592, Philadelphia, PA 19107-3290<br>P: (215) 686-3448/3449 F: (215) 686-1936<br><a href="http://www.phila.gov/citycouncil/sanchez">http://www.phila.gov/citycouncil/sanchez</a>     |
| <b>Councilwoman</b>           | <b>8</b>  | Donna Reed <b>MILLER</b>         | <b>D</b> | City Hall, Room 312, Philadelphia, PA 19107-3290<br>P: (215) 686-3424/3425 F: (215) 686-1937<br><a href="http://www.phila.gov/citycouncil/miller">http://www.phila.gov/citycouncil/miller</a>       |
| <b>Councilwoman</b>           | <b>9</b>  | Marian B. <b>TASCO</b>           | <b>D</b> | City Hall, Room 577, Philadelphia, PA 19107-3290<br>P: (215) 686-3454/3455 F: (215) 686-1938<br><a href="http://www.phila.gov/citycouncil/tasco">http://www.phila.gov/citycouncil/tasco</a>         |
| <b>Councilman</b>             | <b>10</b> | Brian J. <b>O'NEILL</b>          | <b>R</b> | City Hall, Room 562, Philadelphia, PA 19107-3290<br>P: (215) 686-3422/3423 F: (215) 686-1939<br><a href="http://www.phila.gov/citycouncil/oneill">http://www.phila.gov/citycouncil/oneill</a>       |

| Title | Name | Party | Contact Information |
|-------|------|-------|---------------------|
|-------|------|-------|---------------------|

### **COUNCIL MEMBERS-AT-LARGE** These officials are each elected by and represent the entire city.

|                   |                             |          |  |
|-------------------|-----------------------------|----------|--|
| <b>Councilman</b> | W. Wilson <b>GOODE, JR.</b> | <b>D</b> | City Hall, Room 316, Philadelphia, PA 19107<br>P: (215) 686-3414/3415 F: (215) 686-1928<br><a href="http://www.phila.gov/citycouncil/goode">http://www.phila.gov/citycouncil/goode</a> |
|-------------------|-----------------------------|----------|--|

| Title               | Name                                  | Party    | Contact Information   |
|---------------------|---------------------------------------|----------|---|
| <b>Councilman</b>   | William K.<br><b>GREENLEE</b>         | <b>D</b> | City Hall, Room 580, Philadelphia, PA 19107-3290<br>P: (215) 686-3446/3447 F: (215) 686-1927<br><a href="http://www.phila.gov/citycouncil/greenlee">http://www.phila.gov/citycouncil/greenlee</a> |
| <b>Councilman</b>   | Jack<br><b>KELLY</b>                  | <b>R</b> | City Hall, Room 594, Philadelphia, PA 19107-3290<br>P: (215) 686-3452/3453 F: (215) 686-1925<br><a href="http://www.phila.gov/citycouncil/kelly">http://www.phila.gov/citycouncil/kelly</a>       |
| <b>Councilman</b>   | James F.<br><b>KENNEY</b>             | <b>D</b> | City Hall, Room 330, Philadelphia, PA 19107-3290<br>P: (215) 686-3450/3451 F: (215) 686-2013<br><a href="http://www.phila.gov/citycouncil/kenney">http://www.phila.gov/citycouncil/kenney</a>     |
| <b>Councilman</b>   | Bill<br><b>GREEN</b>                  | <b>D</b> | City Hall, Room 599, Philadelphia, PA 19107-3290<br>P: (215) 686-3420/3421 F: (215) 686-1930<br><a href="http://www.phila.gov/citycouncil/green">http://www.phila.gov/citycouncil/green</a>       |
| <b>Councilwoman</b> | Blondell<br><b>REYNOLDS<br/>BROWN</b> | <b>D</b> | City Hall, Room 581, Philadelphia, PA 19107-3290<br>P: (215) 686-3438/3439 F: (215) 686-1926<br><a href="http://www.phila.gov/citycouncil/brown">http://www.phila.gov/citycouncil/brown</a>       |
| <b>Councilman</b>   | Frank<br><b>RIZZO</b>                 | <b>R</b> | City Hall, Room 582, Philadelphia, PA 19107-3290<br>P: (215) 686-3440/3441 F: (215) 686-1929<br><a href="http://www.phila.gov/citycouncil/rizzo">http://www.phila.gov/citycouncil/rizzo</a>       |



## Philadelphia City Council Districts

The seven at-large City Council members each represent the entire city of Philadelphia.

# Philadelphia Ward Leaders

| Ward      | Democrat                                      | Republican                                     |
|-----------|---|--|
| <b>1</b>  | <b>Joseph Hoffman, Sr.</b><br>(215) 467-5713  | <b>Nick Cerulli</b><br>(215) 307-7437          |
| <b>2</b>  | <b>Anthony Palmiere</b><br>(215) 389-4627     | <b>Suzanne L. Haney</b><br>(215) 462-1644      |
| <b>3</b>  | <b>Anthony H. Williams</b><br>(215) 492-2980  | <b>David Oh</b><br>(215) 569-2800              |
| <b>4</b>  | <b>Edgar Campbell</b><br>(215) 747-3214       | <b>Joseph P. Thomas, Jr.</b><br>(215) 748-3370 |
| <b>5</b>  | <b>Michael Boyle</b><br>(215) 735-1397        | <b>Michael A. Cibik</b><br>(215) 735-1060      |
| <b>6</b>  | <b>Peter Wilson</b><br>(215) 871-3454         | <b>Unresolved at time of publication</b>       |
| <b>7</b>  | <b>Angel Cruz</b><br>(215) 291-5643           | <b>Ellen Maenner</b><br>(215) 739-1464         |
| <b>8</b>  | <b>Stephanie Singer</b><br>(215) 751-3479     | <b>Suzanne D. Cohen</b><br>(215) 732-0553      |
| <b>9</b>  | <b>John O'Connell</b><br>(215) 843-1414       | <b>Kenneth Powell, Jr.</b><br>(215) 247-0308   |
| <b>10</b> | <b>Edgar Howard</b><br>(215) 424-2183         | <b>Dwayne Peel</b><br>(215) 424-1184           |
| <b>11</b> | <b>Al Stewart</b><br>(215) 227-5686           | <b>Ronald Wooden</b><br>(267) 975-4045         |
| <b>12</b> | <b>Gregory Paulmier</b><br>(215) 843-7973     | <b>Arlene Freeman</b><br>(215) 849-4267        |
| <b>13</b> | <b>Rosita C. Youngblood</b><br>(215) 849-6426 | <b>Arthur Barlow</b><br>(215) 983-0783         |
| <b>14</b> | <b>Arthur Green</b><br>(215) 922-0295         | <b>Joseph Gembela III</b><br>(215) 546-5200    |
| <b>15</b> | <b>William K. Greenlee</b><br>(215) 686-3446  | <b>Jason Brehouse</b><br>(215) 235-2110        |
| <b>16</b> | <b>Jewell Williams</b><br>(215) 763-2559      | <b>Audra Butts</b><br>(215) 842-1326           |
| <b>17</b> | <b>Mabel Windham</b><br>(215) 549-6060        | <b>Joel Harden</b><br>(215) 844-1103           |
| <b>18</b> | <b>Helen Farrell</b><br>(215) 423-3680        | <b>Vincent Fenerty</b><br>(215) 425-7734       |
| <b>19</b> | <b>Carlos Matos</b><br>(215) 291-4653         | <b>Carlos Santiago</b><br>(215) 426-2083       |

| Ward      | Democrat                                       | Republican                                     |
|-----------|--|--|
| <b>20</b> | <b>Shirley M. Kitchen</b><br>(215) 227-6161    | <b>Jesse W. Woods</b><br>(267) 237-1876        |
| <b>21</b> | <b>Louis Agre</b><br>(215) 732-2536            | <b>Walter Vogler, Jr.</b><br>(215) 482-2834    |
| <b>22</b> | <b>Vernon Price</b><br>(215) 686-3424          | <b>Aaron Finestone</b><br>(267) 240-0012       |
| <b>23</b> | <b>Daniel J. Savage</b><br>(215) 831-0873      | <b>William Pettigrew</b><br>(215) 743-2001     |
| <b>24</b> | <b>Lester Brown</b><br>(215) 386-1075          | <b>Joseph L. Samuel</b><br>(215) 386-8925      |
| <b>25</b> | <b>Thomas Johnson</b><br>(215) 423-7670        | <b>John J. Taylor</b><br>(215) 425-0901        |
| <b>26</b> | <b>Ronald R. Donatucci</b><br>(215) 686-6250   | <b>Irene DiLolle</b><br>(215) 468-2300         |
| <b>27</b> | <b>Carol Jenkins</b><br>(215) 204-7627         | <b>Matthew Wolfe</b><br>(215) 387-7300         |
| <b>28</b> | <b>Anthony Clark</b><br>(215) 686-3462         | <b>Robert Washington</b><br>(215) 225-0855     |
| <b>29</b> | <b>Frank L. Oliver</b><br>(215) 684-3738       | <b>Talmadge Belo</b><br>(215) 236-1472         |
| <b>30</b> | <b>Marcia Wilkof</b><br>(215) 731-9821         | <b>Sean Reilly</b><br>(215) 620-0216           |
| <b>31</b> | <b>Margaret Rzepski</b><br>(215) 389-4627      | <b>Vincent Fenerty</b><br>(215) 425-7734       |
| <b>32</b> | <b>Gary Williams</b><br>(215) 686-3442         | <b>Douglas Mitchell</b><br>(215) 236-8892      |
| <b>33</b> | <b>Donna Aument</b><br>(215) 686-4393          | <b>Matt Slonaker</b><br>(215) 626-2212         |
| <b>34</b> | <b>Robert A. Brady</b><br>(215) 241-7804       | <b>Joseph N. Bongiovanni</b><br>(215) 790-0060 |
| <b>35</b> | <b>William Dolbow</b><br>(610) 378-4399        | <b>Agnes Tilley</b><br>(215) 722-3459          |
| <b>36</b> | <b>Anna C. Verna</b><br>(215) 686-3412         | <b>William H. Black</b><br>(215) 463-3125      |
| <b>37</b> | <b>El Amor M. Brawne Ali</b><br>(215) 686-2204 | <b>Michael Meehan</b><br>(215) 977-2368        |
| <b>38</b> | <b>Ralph Wynder</b><br>(215) 686-6267          | <b>Francis Sullivan</b><br>(215) 848-1411      |

| Ward       | Democrat                                     | Republican                                 |
|------------|--|--|
| <b>39A</b> | <b>Rosanne Pauciello</b><br>(215) 468-3866   | <b>Nick Marrandino</b><br>(267) 519-8623   |
| <b>39B</b> | <b>Matthew Myers</b><br>(215) 467-4643       | <b>Joseph D'Urso</b><br>(215) 271-6361     |
| <b>40A</b> | <b>Edward Thornton</b><br>(215) 365-5525     | <b>Michael Gallagher</b><br>(610) 457-2658 |
| <b>40B</b> | <b>Anna M. Brown</b><br>(215) 937-1915       | <b>Patricia Hardy</b><br>(215) 724-4686    |
| <b>41</b>  | <b>Michael P. McGeehan</b><br>(215) 333-9760 | <b>James Louis</b><br>(215) 333-7690       |
| <b>42</b>  | <b>Elaine Tomlin</b><br>(215) 457-4024       | <b>Carol Golden</b><br>(215) 324-8221      |
| <b>43</b>  | <b>Thomas Logan</b><br>(215) 226-0133        | <b>Troy Bouie</b><br>(267) 202-1214        |
| <b>44</b>  | <b>Willie Jordan</b><br>(215) 471-0490       | <b>Bruce Harris</b><br>(215) 748-0952      |
| <b>45</b>  | <b>Harry Enggasser</b><br>(215) 281-2539     | <b>Kevin Pasquay</b><br>(215) 426-0176     |
| <b>46</b>  | <b>Jannie L. Blackwell</b><br>(215) 686-3418 | <b>Mark Supple</b><br>(215) 729-0929       |
| <b>47</b>  | <b>George Brooks</b><br>(215) 686-6250       | <b>Bill Harrison</b><br>(215) 765-5759     |
| <b>48</b>  | <b>Nicholas Maiale</b><br>(215) 546-5515     | <b>Vincent Emmanuel</b><br>(215) 880-3341  |
| <b>49</b>  | <b>Shirley Gregory</b><br>(215) 389-4627     | <b>Elizabeth Blong</b><br>(215) 329-7248   |
| <b>50</b>  | <b>Marian B. Tasco</b><br>(215) 686-3455     | <b>Howard Walker</b><br>(215) 242-2662     |
| <b>51</b>  | <b>Vivian T. Miller</b><br>(215) 686-7701    | <b>Andrew Gentsch</b><br>(215) 729-1090    |

| Ward       | Democrat                                      | Republican                                 |
|------------|---|--|
| <b>52</b>  | <b>Michael Nutter</b><br>(215) 686-2182       | <b>Lamont Foreman</b><br>(215) 879-5188    |
| <b>53</b>  | <b>Christine Solomon</b><br>(215) 728-1484    | <b>Leonard Amodei</b><br>(215) 725-8561    |
| <b>54</b>  | <b>Alan L. Butkovitz</b><br>(215) 686-6680    | <b>William Pettigrew</b><br>(215) 743-2000 |
| <b>55</b>  | <b>Robert Dellavella</b><br>(215) 335-4004    | <b>Chris Vogler</b><br>(215) 338-1607      |
| <b>56</b>  | <b>John P. Sabatina Sr.</b><br>(215) 742-8600 | <b>Mike Neisser</b><br>(215) 745-3745      |
| <b>57</b>  | <b>Patrick Parkinson</b><br>(215) 969-9217    | <b>Dennis O'Brien</b><br>(215) 632-5150    |
| <b>58</b>  | <b>Michael Stack, III</b><br>(215) 281-2539   | <b>George T. Kenney</b><br>(215) 934-5144  |
| <b>59</b>  | <b>Donna Reed Miller</b><br>(215) 686-3424    | <b>Joseph Messa</b><br>(215) 843-1009      |
| <b>60</b>  | <b>James Hughes</b><br>(215) 472-8666         | <b>Eric Quick</b><br>(267) 516-7891        |
| <b>61</b>  | <b>Robert McGowan</b><br>(215) 240-0148       | <b>William P. Ivers</b><br>(215) 745-7010  |
| <b>62</b>  | <b>Margaret Tartaglione</b><br>(215) 686-3460 | <b>Scott Cummings</b><br>(215) 332-6961    |
| <b>63</b>  | <b>Bernice Hill</b><br>(215) 698-9421         | <b>Robert Barrilli</b><br>(215) 673-5469   |
| <b>64</b>  | <b>Lorraine Bednarek</b><br>(215) 332-2642    | <b>John M. Perzel</b><br>(215) 331-2600    |
| <b>65</b>  | <b>Joan L. Krajewski</b><br>(215) 686-3444    | <b>Philip Innamorato</b><br>(215) 528-9584 |
| <b>66A</b> | <b>Shawn Dillon</b><br>(215) 637-6360         | <b>Joseph J. Duda</b><br>(215) 561-0650    |
| <b>66B</b> | <b>Michael McAleer</b><br>(215) 281-2539      |  |

## POLITICAL PARTY CONTACTS

|                    |                       |                       |
|--------------------|-----------------------|-----------------------|
| <b>Democratic</b>  | State: (717) 920-8470 | Local: (215) 241-7800 |
| <b>Green Party</b> | State: (800) 647-4685 | Local: (215) 243-7103 |
| <b>Libertarian</b> | State: (800) 774-4487 | Local: (800) 774-4487 |
| <b>Republican</b>  | State: (717) 234-4901 | Local: (215) 561-0650 |

# Key to Philadelphia Wards and Divisions

| District | Wards | District | Wards |
|----------|-------|----------|-------|
|----------|-------|----------|-------|

## U.S. REPRESENTATIVES

U.S. Representatives and Districts can be found on pages 3–4

|          |  |           |  |
|----------|--|-----------|--|
| <b>1</b> | 1, 2, 3, 4, 5, 7, 10, 14, 15* (3, 7, 10, 15, 16, 17, 19), 17, 18, 19, 20, 23* (1-7, 9, 13-23), 25* (1, 2, 4-7, 9-24), 26* (2, 23), 31, 33* (1, 4-10, 12-24), 34, 37, 39, 40, 42, 43, 45* (19), 49* (1-6, 9-17, 19, 21-23), 53* (1-16, 18, 19, 22, 23), 54, 55* (15), 61* (1), 62* (7, 10, 11, 14, 20, 23), Delaware* | <b>8</b>  | 58* (4, 6, 7, 20-22, 24, 29, 31, 39, 41), 66* (2-6, 9, 11, 14, 16, 20, 22, 25, 30, 33-37, 42, 44-46), Bucks* Montgomery*   |
| <b>2</b> | 6, 8, 9, 11, 12, 13, 15* (1, 2, 4-6, 8, 9, 11-14, 18), 16, 21, 22, 23* (8, 10-12), 24, 26* (1, 3-22, 24), 27, 28, 29, 30, 32, 33* (2, 3, 11), 35* (1, 13, 18-24, 26-31), 36, 38, 44, 46, 47, 48, 49* (7, 8, 18, 20, 24, 25), 50, 51, 52, 59, 60, 61* (2-28), Montgomery*   | <b>13</b> | 25* (3, 8), 35* (2-12, 14-17, 25, 32), 41, 45, 53* (17, 20, 21), 55, 56, 57, 58* (1-3, 5, 8-19, 23, 25-28, 30, 32-38, 40, 42-44), 62* (1-6, 8, 9, 12, 13, 15-19, 21, 22, 24-26), 63, 64, 65, 66* (1, 7, 8, 10, 12, 13, 15, 17-19, 21, 23, 24, 26-29, 31, 32, 38-41, 43), Montgomery* |

## STATE SENATORS

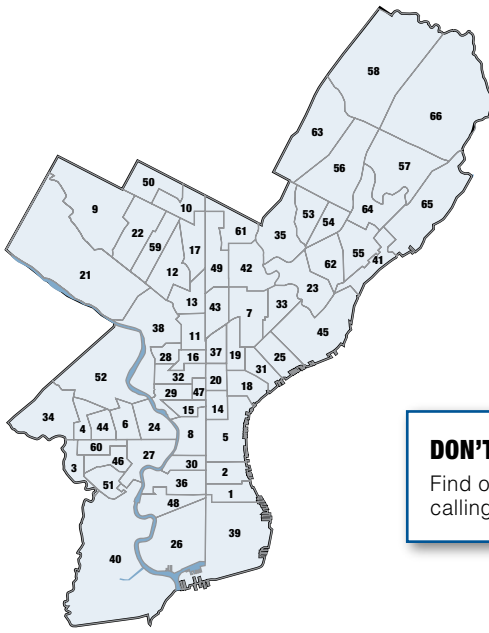
State Senators and Districts can be found on page 4

|          |  |          |  |
|----------|--|----------|--|
| <b>1</b> | 1, 2, 5, 8, 14, 15, 18* (1, 2, 4-7, 10, 11, 12), 25, 26, 29* (10, 30* (3, 7-9, 14-16), 31* (7), 36* (1-13, 15-22, 29, 31, 34-41), 38* (9), 39, 40* (30, 38, 40), 48* (1, 2, 5, 12-14, 17, 18, 20)  | <b>5</b> | 41, 45, 53* (6, 08, 10, 13, 14, 16-18), 56* (1-3, 10-41), 57, 58, 63* (7, 18, 21-25), 64* (1-7, 15), 65, 66  |
| <b>2</b> | 7, 18* (3, 8, 13, 15-17), 19, 23, 31* (1-6, 8-19), 33, 35* (23, 24, 26), 37* (16-21), 42* (1-14, 22, 23), 43* (2-8, 11, 12, 17-20), 53* (1-5, 7, 9, 11, 12, 15, 19-23), 54, 55, 56* (4-9), 62, 64* (8-14, 16-18)   | <b>7</b> | 4, 6, 21* (1, 2, 4-23, 29, 33-36, 44, 45), 24, 27* (3, 6, 11, 13, 18), 28, 32* (19-29), 34, 38* (1-8, 10-21), 44, 46* (18, 19, 22, 23), 52, 60* (1, 2, 8, 12, 23), Montgomery*   |
| <b>3</b> | 11, 12* (8-24), 13, 16, 18* (9, 14), 20, 21* (3, 24-28, 30-32, 37-43), 29* (1-9, 11-18), 32* (1-18, 30, 31), 35* (1-22, 25, 27-32), 37* (1-15), 42* (15-21, 24, 25), 43* (1, 9, 10, 13-16, 21-25), 47, 49* (1-6, 9-15, 17-19, 21-23), 59* (17, 18, 20), 61, 63* (1-6, 8-17, 19-20) | <b>8</b> | 3, 27* (1, 2, 4, 5, 7-10, 12, 14-17, 19-23), 30* (1, 2, 4-6, 10-13, 17), 36* (14, 23-28, 30, 32, 33), 40* (1-29, 31-37, 39, 41-51), 46* (1-17, 20, 21), 48* (3, 4, 6-11, 15, 16, 19, 21-23), 51, 60* (3-7, 9-11, 13-22), Delaware* |
| <b>4</b> | 9, 10, 12* (1-7), 17, 22, 49* (7, 8, 16, 20, 24, 25), 50, 59* (1-16, 19, 21-25), Montgomery*   |          |  |

## STATE REPRESENTATIVES

State Representatives and Districts can be found on pages 4–6

|            |  |            |   |
|------------|--|------------|---|
| <b>152</b> | 58* (12, 33, 34, 38), Montgomery*  | <b>177</b> | 23* (2-4, 8, 9, 13, 14), 25* (1-8, 10-12, 22-24), 31* (5, 6, 15-19), 33* (1-13), 45* (1-8, 12-15, 18, 20-25), 55* (1, 2), 62* (1, 3, 18, 19)                    |
| <b>154</b> | 35* (1), Montgomery*   | <b>179</b> | 23* (1, 5-7, 10-12, 15-23), 35* (15, 29, 30), 42* (4, 7, 9, 12, 14-16, 19), 43* (2-5, 7, 8, 11-13, 17-20), 49* (1), 62* (2, 4, 6-12, 14-16, 20, 23)             |
| <b>169</b> | 57* (1, 12, 14, 16-19, 21, 22, 24, 25, 28), 58* (8, 14, 23, 27, 30, 42, 44), 65* (1, 2, 10, 23), 66* (1, 3, 7, 8, 10-15, 18-21, 23-33, 35-46)  | <b>180</b> | 7, 19* (2-4, 6, 7, 9-11, 13-19), 33* (14-24), 42* (1-3, 5, 6, 8, 10, 11, 22, 23), 43* (6)   |
| <b>170</b> | 35* (2, 3, 5, 32), 53* (20, 21), 56* (4, 7-10, 33), 58* (1-7, 9, 10, 13, 15-18, 20-22, 24-26, 29, 31, 32, 35-37, 39-41, 43), 63* (2, 6, 8, 21), 66* (2, 4-6, 9, 16, 22, 34), Montgomery* | <b>181</b> | 5* (15, 20, 23), 14, 18* (1, 3, 8, 9, 13-17), 19* (1, 5, 8, 12), 20, 37, 42* (13, 17, 20), 43* (1, 9, 10, 14-16, 21-25), 47* (1), 49* (2, 3, 5, 13)             |
| <b>172</b> | 55* (6-9, 11-27, 29), 56* (32), 57* (2, 3, 11, 13, 15), 58* (11, 19, 28), 63* (1, 3-5, 9, 10, 12-14, 16-20, 24), 64, 66* (17)  | <b>182</b> | 2* (4-7, 10, 11, 18, 19, 22-24), 5* (5-9, 11, 14, 22), 8, 30* (3, 7, 8, 16, 17), 36* (14, 24-27, 32, 33)  |
| <b>173</b> | 41, 55* (3-5, 10, 28), 62* (5, 13, 17, 21, 22, 24-26), 65* (3-9, 11-22)  | <b>184</b> | 1* (1-9, 11, 13-15, 17-21), 39, 48* (1, 5, 13, 14, 17, 20)  |
| <b>174</b> | 53* (10, 11, 13), 54, 56* (1, 12, 13, 17, 18, 20-31, 34, 35, 38-41), 57* (4-10, 20, 23, 26, 27), 63* (7, 11, 15, 22, 23, 25)   | <b>185</b> | 26, 40* (1, 6, 12, 14-18, 22, 27-31, 35-46, 48-51), Delaware*   |
| <b>175</b> | 1* (10, 12, 16), 2* (1-3, 12-17, 25-27), 5* (1-4, 10, 12, 13, 16-19, 21), 18* (2, 4-7, 10-12), 25* (9, 13-21), 31* (1-4, 7-14), 45* (9-11, 16, 17, 19)                                   | <b>186</b> | 2* (8, 9, 20, 21), 27* (4, 12, 15-17), 30* (1, 2, 4-6, 9-15), 36* (1-13, 15-23, 28-31, 34-41), 48* (2-4, 6-12, 15, 16, 18, 19, 21-23), 51* (3, 5, 7-10, 12, 22) |



# Philadelphia Wards

## DON'T KNOW WHICH WARD YOU LIVE IN?

Find out by visiting [www.seventy.org/map](http://www.seventy.org/map) or by calling **1-866-268-8603**

| District   | Wards   | District   | Wards   |
|------------|---|------------|---|
| <b>188</b> | 27* (1-3, 5-11, 13, 14, 18-23), 46, 51* (2, 6, 13, 14, 16-20, 26, 28), 60* (1-3, 8, 10-13, 23)  | <b>197</b> | 11, 13* (25), 16, 28* (2-5, 8, 16-18), 32* (5-9, 11), 38* (1-8, 11-18, 20, 21), 47* (2-14)  |
| <b>190</b> | 4* (1-3, 7, 8, 12-15, 19, 20), 6* (1-4, 6, 10-14, 16-18), 28* (1, 6, 7, 9-15), 32* (10, 23, 24, 26, 27), 38* (9, 10), 44, 52* (10), 60* (4-7, 9, 14-22) | <b>198</b> | 9* (11-15), 12* (8, 11, 15-24), 13* (1-9, 11-24), 21* (23, 24), 22* (1-3, 8, 10), 42* (21, 24, 25), 49* (4, 6, 9-12, 14, 15, 17, 19), 59* (17, 18, 20)  |
| <b>191</b> | 3, 40* (2-5, 7-11, 13, 19-21, 23-26, 32-34, 47), 51* (1, 4, 11, 15, 21, 23-25, 27), Delaware*   | <b>200</b> | 9* (1-10, 16, 17), 21* (3, 30, 33, 34, 39, 43-45), 22* (4-7, 11, 12, 16-21, 23-26), 50  |
| <b>192</b> | 4* (4-6, 9-11, 16-18, 21), 34, 52* (5, 15, 17-20, 22-27)  | <b>201</b> | 12* (1-7, 9, 10, 12-14), 13* (10), 17* (1-3, 5-10, 15-17, 22-25, 28, 29), 22* (9, 13-15, 22, 27-29), 49* (8, 20, 24, 25), 59* (1-16, 19, 21-25)   |
| <b>194</b> | 21* (1, 2, 4-22, 25-29, 31, 32, 35-38, 40-42), 38* (19), 52* (1-4, 6-9, 11-14, 16, 21, 28), Montgomery*   | <b>202</b> | 17* (4, 11-14, 18-21, 26, 27), 35* (4, 6, 7, 16, 17, 22, 24, 26-28), 42* (18), 49* (7, 16, 21-23), 53* (1-9, 12, 14-19, 22, 23), 56* (2, 3, 5, 6, 11, 14-16, 19, 36, 37), 61* (1-5, 7, 8, 10) |
| <b>195</b> | 6* (5, 7-9, 15), 15, 24, 29, 32* (1-4, 12-22, 25, 28-31)  | <b>203</b> | 10, 35* (8-14, 18-21, 23, 25, 31), 49* (18), 61* (6, 9, 11-28)  |

## CITY COUNCIL MEMBERS City Council Members and Districts can be found on page 7-8

|          |  |           |   |
|----------|--|-----------|---|
| <b>1</b> | 1, 2, 5* (1-14, 16-19, 21, 22), 18* (5), 23* (14-15), 25, 31* (1, 3-8, 10-13, 14-19), 39* (1, 3, 5-12, 15, 17-23, 25-28, 30-35, 37-40, 42-43, 45-46), 45* (7-11, 13-14, 16-19, 21-22, 24), 62* (1-2, 4-5, 9, 13) | <b>6</b>  | 41, 45* (1-6, 12, 15, 20, 23, 25), 54, 55, 56* (26, 39), 57* (4-9, 20, 23, 26-27), 62* (3, 6-8, 10-12, 14-26), 64, 65* (1-9, 11-23)   |
| <b>2</b> | 8* (1-7, 9, 13-14, 20-21, 27-28), 26, 30, 36, 39* (2, 4, 13-14, 16, 24, 29, 36, 41, 44), 40, 48  | <b>7</b>  | 7, 18* (3, 8, 13-17), 19, 23* (1-3, 5-7, 13, 16-23), 31* (2, 9), 33, 35* (14-17, 22-24, 26), 37* (15-21), 42* (1-11, 22-23), 43* (2-8, 11-12, 17-20), 53* (1, 3-4, 6, 8, 10, 13-14, 16-19), 56* (1, 5-6, 13, 15-16, 20-25, 27-32, 34-38, 40-41), 63* (22) |
| <b>3</b> | 3, 6, 24, 27, 44, 46, 51, 60   | <b>8</b>  | 9, 11, 12, 13, 17, 22, 43* (1, 2, 22-24), 49* (4-5, 11-12), 59  |
| <b>4</b> | 4, 21, 34, 38, 52  | <b>9</b>  | 10, 35* (1-2, 4, 6-32), 42* (15-21, 24-25), 49* (2-3, 6-10, 13-25), 50, 53* (2, 5, 7, 9, 11, 23), 61  |
| <b>5</b> | 5* (15, 20, 23), 8* (8, 10-12, 15-19, 22-26, 29-30), 14, 15, 16, 18* (1-2, 4, 6-7, 9-12), 20, 23* (4, 8-12), 28, 29, 32, 37* (1-14), 42* (12-14), 43* (1, 9-10, 13-16, 21-25), 47, 49* (1)                       | <b>10</b> | 35* (3, 5), 53* (12, 15, 20-22), 56* (2-4, 7-12, 14, 17-19, 33), 57* (1-3, 10-19, 21-22, 24-25, 28), 58, 63* (1-21, 23-25), 65* (10), 66  |

# Who Represents You in the Suburbs

## Bucks County [www.buckscounty.org](http://www.buckscounty.org)

County Board of Elections: (215) 348-6170  
55 E. Court Street, Doylestown, PA 18901

Some elected officials have more than one office.  
Their main contact information is provided.

| District | Name | Party | Main Contact Information | Local Contact Information |
|----------|------|-------|--------------------------|---------------------------|
|----------|------|-------|--------------------------|---------------------------|

### U.S. REPRESENTATIVE

U.S. Senators can be found on page 3

|          |                          |          |   |  |
|----------|--------------------------|----------|---|--|
| <b>8</b> | Patrick J. <b>MURPHY</b> | <b>D</b> | 1609 Longworth HOB, Washington, DC 20515<br>P: (202) 225-4276, F: (202) 225-9511<br><a href="http://www.patrickmurphy.house.gov">http://www.patrickmurphy.house.gov</a> | 60 North Main Street, Doylestown, PA 18901<br>P: (215) 348-1194, F: (215) 348-1449 |
|----------|--------------------------|----------|---|--|

### STATE SENATORS

|           |                                   |          |   |   |
|-----------|-----------------------------------|----------|---|---|
| <b>6</b>  | Robert M. <b>TOMLINSON</b>        | <b>R</b> | Senate Box 203006, Harrisburg, PA 17120<br>P: (717) 787-5072, F: (717) 772-2991<br><a href="http://www.senatortomlinson.com">http://www.senatortomlinson.com</a>        | 2222 Trenton Road, Suite A, Levittown, PA 19056<br>P: (215) 945-2800, F: (215) 945-2808             |
| <b>10</b> | Charles T. <b>McILHINNEY, Jr.</b> | <b>R</b> | Senate Box 203010, Harrisburg, PA 17120<br>P: (717) 787-7305, F: (717) 783-5962<br><a href="http://www.senatormcilhinney.com">http://www.senatormcilhinney.com</a>      | 22 South Main St., Suite 220<br>Doylestown, PA 18901<br>P: (215) 489-5000, F: (215) 489-5200        |
| <b>12</b> | Stewart J. <b>GREENLEAF</b>       | <b>R</b> | Senate Box 203012, Harrisburg, PA 17120-3012<br>P: (717) 787-6599, F: (717) 783-7328<br><a href="http://www.senatorgreenleaf.com">http://www.senatorgreenleaf.com</a>   | 711 North York Road, Suite 1<br>Willow Grove, PA 19090-2124<br>P: (215) 657-7700, F: (215) 657-1885 |
| <b>24</b> | Robert C. <b>WONDERLING</b>       | <b>R</b> | Senate Box 203024, Harrisburg, PA 17120-3024<br>P: (717) 787-3110, F: (717) 787-8004<br><a href="http://www.senatorwonderling.com">http://www.senatorwonderling.com</a> | 312 W Broad Street, Quakertown, PA 18951<br>P: (215) 529-1215, F: (215) 529-1218                    |

### STATE REPRESENTATIVES

|            |                              |          |  |  |
|------------|------------------------------|----------|--|--|
| <b>18</b>  | Gene <b>DIGIROLAMO</b>       | <b>R</b> | PO Box 202018, Harrisburg, PA 17120-2018<br>P: (717) 783-7319, F: (717) 772-2414<br><a href="http://www.genedigirolamo.com">http://www.genedigirolamo.com</a>          | 2444 Bristol Road, Neshaminy Valley Commons<br>Bensalem, PA 19020<br>P: (215) 750-1017, F: (215) 750-1295    |
| <b>29</b>  | Bernie <b>O'NEILL</b>        | <b>R</b> | PO Box 202029, Harrisburg, PA 17120-2029<br>P: (717) 705-7170, F: (717) 783-3278<br><a href="http://www.reponeill.com">http://www.reponeill.com</a>                    | 755 York Road, Suite 105, Warminster, PA 18974<br>P: (215) 441-2624, F: (215) 441-2627                       |
| <b>31</b>  | Steven J. <b>SANTARSIERO</b> | <b>R</b> | PO Box 202031 Harrisburg, PA 17120-2031<br>P: (717) 787-5475, F: (717) 787-6929<br><a href="http://www.pahouse.com/Santarsiero">http://www.pahouse.com/Santarsiero</a> | 2 South State Street, Newtown, PA 18904<br>P: (215) 968-3975, F: (215) 968-4674                              |
| <b>140</b> | John T. <b>GALLOWAY</b>      | <b>D</b> | PO Box 202140, Harrisburg, PA 17120-2140<br>P: (717) 787-1292, F: (717) 780-4780<br><a href="http://www.pahouse.com/galloway">http://www.pahouse.com/galloway</a>      | One North Wilson Avenue, Suite 6<br>Bristol, PA 19007<br>P: (215) 781-2451, F: (215) 781-3443                |
| <b>141</b> | Anthony J. <b>MELIO</b>      | <b>D</b> | PO Box 202141, Harrisburg, PA 17120-2141<br>P: (717) 787-3557, F: (717) 783-0682<br><a href="http://www.pahouse.com/melio">http://www.pahouse.com/melio</a>            | 3611 Green Lane, Levittown, PA 19057<br>P: (215) 943-8669, F: (215) 943-2434                                 |
| <b>142</b> | Frank A. <b>FARRY</b>        | <b>R</b> | PO Box 202142, Harrisburg, PA 17120-2142<br>P: (717) 260-6140, F: (717) 772-9869<br><a href="http://repfarry.com">http://repfarry.com</a>                              | 340 East Maple Avenue, Suite 307<br>Langhorne, PA 19047<br>P: (215) 752-6750, F: (215) 752-6754              |
| <b>143</b> | Marguerite <b>QUINN</b>      | <b>R</b> | PO Box 202143, Harrisburg, PA 17120-2143<br>P: (717) 772-1413, F: (717) 783-3793<br><a href="http://www.repquinn.net">http://www.repquinn.net</a>                      | 1032 North Easton Road, Doylestown<br>PA 18902-1055<br>P: (215) 489-2126, F: (215) 489-2129                  |
| <b>144</b> | Katharine M. <b>WATSON</b>   | <b>R</b> | PO Box 202144, Harrisburg, PA 17120-2144<br>P: (717) 787-5452, F: (717) 783-8934<br><a href="http://www.kathywatson144.com">http://www.kathywatson144.com</a>          | 1410 West Street Road, Warminster, PA 18974<br>P: (215) 674-0500, F: (215) 674-0347                          |
| <b>145</b> | Paul I. <b>CLYMER</b>        | <b>R</b> | PO Box 202145, Harrisburg, PA 17120-2145<br>P: (717) 783-3154, F: (717) 705-1854<br><a href="http://www.paulclymer.com">http://www.paulclymer.com</a>                  | 311 North 7th Street, Perkasie, PA 18944<br>P: (215) 257-0279, F: (215) 257-6350                             |
| <b>178</b> | Scott A. <b>PETRI</b>        | <b>R</b> | PO Box 202178, Harrisburg, PA 17120-2178<br>P: (717) 787-9033, F: (717) 705-1802<br><a href="http://www.reppetri.com">http://www.reppetri.com</a>                      | 95 Almshouse Road, Suite 303<br>The Weather Vane, Richboro, PA 18954<br>P: (215) 364-3414, F: (215) 364-8626 |

### COUNTY COMMISSIONERS

These officials represent the entire county.

|   |          |  |   |
|---|----------|--|---|
| Charles H. <b>MARTIN</b> , <i>Chair</i>           | <b>R</b> | P: (215) 348-6426, F: (215) 340-8204<br><a href="mailto:chmartin@co.bucks.pa.us">chmartin@co.bucks.pa.us</a>                     | Bucks County Courthouse<br>55 East Court Street<br>Doylestown, PA 18901 |
| James F. <b>CRAWLEY, ESQ.</b> , <i>Vice Chair</i> | <b>R</b> | P: (215) 348-6424, F: (215) 348-6146<br><a href="mailto:jfcrawley@co.bucks.pa.us">jfcrawley@co.bucks.pa.us</a>                   |   |
| Diane M. <b>ELLIS-MARSEGLIA</b> , <i>L.C.S.W.</i> | <b>D</b> | P: (215) 348-6425, F: (215) 340-8160<br><a href="mailto:CommEllisMarseglia@co.bucks.pa.us">CommEllisMarseglia@co.bucks.pa.us</a> |   |

# Bucks County

Some elected officials have more than one office.  
Their main contact information is provided.

| District | Name | Party | Main Contact Information |
|----------|------|-------|--------------------------|
|----------|------|-------|--------------------------|

## DISTRICT ATTORNEY

|  |                          |   |   |
|--|--------------------------|---|---|
|  | Michelle<br><b>HENRY</b> | R | Bucks County Courthouse, 55 East Court Street, Doylestown, PA 18901<br>P: (215) 348-6344, F: (215) 348-6299 |
|--|--------------------------|---|---|

## CONTROLLER

|  |                                   |   |   |
|--|-----------------------------------|---|---|
|  | Raymond F.<br><b>McHUGH, Esq.</b> | R | Bucks County Courthouse, 55 East Court Street, Doylestown, PA 18901<br>P: (215) 348-6435, F: (215) 348-6100 |
|--|-----------------------------------|---|---|

# Chester County [www.chesco.org](http://www.chesco.org)

County Board of Elections: (610) 344-6410  
601 Westtown Road, Suite 150, PO Box 2747, West Chester, PA 19380-0990

Some elected officials have more than one office.  
Their main contact information is provided.

| District | Name | Party | Main Contact Information | Local Contact Information |
|----------|------|-------|--------------------------|---------------------------|
|----------|------|-------|--------------------------|---------------------------|

## U.S. REPRESENTATIVE

U.S. Senators can be found on page 3

|           |                           |   |   |  |
|-----------|---------------------------|---|---|--|
| <b>6</b>  | Jim<br><b>GERLACH</b>     | D | 308 Cannon HOB, Washington, DC 20515<br>P: (202) 225-4315, F: (202) 225-8440<br><a href="http://gerlach.house.gov">http://gerlach.house.gov</a>     | 111 East Uwchlan Avenue, Exton, PA 19341<br>(610) 594-1415, F:(610) 594-1419           |
| <b>7</b>  | Joe<br><b>SESTAK</b>      | D | 1022 Longworth HOB, Washington, DC 20515<br>P: (202) 225-2011, F: (202) 226-0280<br><a href="http://sestak.house.gov">http://sestak.house.gov</a>   | 600 N. Jackson St., Suite 203, Media, PA 19063<br>P: (610) 892-8623, F: (610) 892-8628 |
| <b>16</b> | Joseph R.<br><b>PITTS</b> | R | 420 Cannon HOB, Washington, DC 20515<br>P: (202) 225-2411, F: (202) 225-2013<br><a href="http://www.house.gov/pitts">http://www.house.gov/pitts</a> | PO Box 837, Unionville, PA 19375<br>P: (610) 444-4581, F: (610) 444-5750               |

## STATE SENATORS

|           |                                 |   |   |   |
|-----------|---------------------------------|---|---|---|
| <b>9</b>  | Dominic.<br><b>PILEGGI</b>      | R | Senate Box 203009, Harrisburg, PA 17120<br>P: (717) 787-4712, F: (717) 783-7490<br><a href="http://www.senatorpileggi.com">http://www.senatorpileggi.com</a>        | 631 W. Baltimore Pike, West Grove, PA 19390<br>P: (610) 345-1084, F: (610) 345-1087           |
| <b>19</b> | Andrew E.<br><b>DINNIMAN</b>    | D | Senate Box 203019, Harrisburg, PA 17120-3019<br>P: (717) 787-5709, F: (717) 787-4384<br><a href="http://www.senatordinniman.com">http://www.senatordinniman.com</a> | One North Church Street, West Chester, PA 19380<br>P: (610) 692-2112, F: (610) 436-1721       |
| <b>26</b> | Edwin B.<br><b>ERICKSON</b>     | R | Senate Box 203026, Harrisburg, PA 17120-3026<br>P: (717) 787-1350, F: (717) 787-0196<br><a href="http://www.senatorerickson.com">http://www.senatorerickson.com</a> | 5037 Township Line Road<br>Drexel Hill, PA 19026-4821<br>P: (610) 853-4100, F: (610) 853-4136 |
| <b>36</b> | Michael W.<br><b>BRUBAKER</b>   | R | Senate Box 203036, Harrisburg, PA 17120<br>P: (717) 787-4420, F: (717) 783-3156<br><a href="http://senatorbrubaker.com">http://senatorbrubaker.com</a>              | 301 E. Main Street, Lititz, PA 17543<br>P: (717) 627-0036, F: (717) 627-1389                  |
| <b>44</b> | John C.<br><b>RAFFERTY, JR.</b> | R | Senate Box 203044, Harrisburg, PA 17120-3044<br>P: (717) 787-1398, F: (717) 783-4587<br><a href="http://www.senatorrafferty.com">http://www.senatorrafferty.com</a> | 2325 Pottstown Pike, Pottstown, PA 19465<br>P: (610) 469-8390, F: (610) 469-8394              |
| <b>48</b> | Mike<br><b>FOLMER</b>           | R | Senate Box 203048, Harrisburg, PA 17120<br>P: (717) 787-5708, F: (717) 787-3455<br><a href="http://www.senatorfolmer.com">http://www.senatorfolmer.com</a>          | 509 W. Penn Ave., Suite 10, Robesonia, PA 19551<br>P: (610) 693-3200, F: (610) 693-3213       |

## STATE REPRESENTATIVES

|            |                                   |   |   |  |
|------------|-----------------------------------|---|---|--|
| <b>13</b>  | Tom<br><b>HOUGHTON</b>            | R | PO Box 202013, Harrisburg, PA 17120-2013<br>P: (717) 772-2426, F: (717) 787-6727<br><a href="http://www.pahouse.com/houghton">http://www.pahouse.com/houghton</a> | 3157 Limestone Road, PO Box 69<br>Cochranville, PA 19330<br>P: (610) 593-6565, F: (610) 593-7041 |
| <b>26</b>  | Timothy F.<br><b>HENNESSEY</b>    | R | PO Box 202026, Harrisburg, PA 17120-2026<br>P: (717) 787-3431, F: (717) 705-1849<br><a href="http://www.rephennessey.com">http://www.rephennessey.com</a>         | 1038 East Lincoln Highway, Coatesville, PA 19320<br>P: (610) 380-8600, F: (610) 380-1777         |
| <b>155</b> | Curt<br><b>SCHRODER</b>           | R | PO Box 202155, Harrisburg, PA 17120-2155<br>P: (717) 783-2520, F: (717) 705-1994<br><a href="http://www.curtschroder.com">http://www.curtschroder.com</a>         | 315 Gordon Drive, Exton, PA 19341<br>P: (610) 524-5595, F: (610) 524-5667                        |
| <b>156</b> | Barbara McIlvaine<br><b>SMITH</b> | D | PO Box 202156, Harrisburg, PA 17120-2156<br>P: (717) 705-1922, F: (717) 780-4778<br><a href="http://www.pahouse.com/bsmith">http://www.pahouse.com/bsmith</a>     | 107 East Chestnut Street<br>West Chester, PA 19380<br>P: (610) 696-4990, F: (610) 738-2163       |



# Who Represents You in the Suburbs (continued)

## Chester County

Some elected officials have more than one office. Their main contact information is provided.

| District | Name | Party | Main Contact Information |
|----------|------|-------|--------------------------|
|----------|------|-------|--------------------------|

### STATE REPRESENTATIVES

|            |                   |   |   |   |
|------------|-------------------|---|---|---|
| <b>157</b> | Paul J. DRUCKER   | D | PO Box 202157, Harrisburg, PA 17120-2157<br>P: (717) 705-2003, F: (717) 772-2943<br><a href="http://www.pahouse.com/drucker">http://www.pahouse.com/drucker</a> | 992 Old Eagle School Road, Suite 909<br>Wayne, PA 19087<br>P: (610) 688-5691, F: (610) 688-5695                         |
| <b>158</b> | Chris ROSS        | R | PO Box 202158, Harrisburg, PA 17120-2158<br>P: (717) 783-1574, F: (717) 705-2095<br><a href="http://www.repress.com">http://www.repress.com</a>                 | P. O. Box 835, Unionville, PA 19375<br>P: (610) 925-0555, F: (610) 925-5408   |
| <b>160</b> | Stephen BARRAR    | R | PO Box 202160, Harrisburg, PA 17120-2160<br>P: (717) 783-3038, F: (717) 787-7604<br><a href="http://www.stevebarrar.com">http://www.stevebarrar.com</a>         | Willow Brook Shpg. Center, 3358 Chichester Ave.<br>Suite 13, Boothwyn, PA 19061<br>P: (610) 485-7606, F: (610) 485-8277 |
| <b>167</b> | Duane MILNE       | R | PO Box 202167, Harrisburg, PA 17120-2167<br>P: (717) 787-8579, F: (717) 787-1295<br><a href="http://www.duanemilne.com">http://www.duanemilne.com</a>           | 18 E. Lancaster Avenue, Malvern, PA 19355<br>P: (610) 251-1070, F: (610) 251-1074                                       |
| <b>168</b> | Thomas H. KILLION | D | PO Box 202168, Harrisburg, PA 17120-2168<br>P: (717) 772-0855, F: (717) 772-9856<br><a href="http://www.repkillion.com">http://www.repkillion.com</a>           | 4641 West Chester Pike<br>Newtown Square, PA 19073<br>P: (610) 325-1541, F: (610) 325-1546                              |

### COUNTY COMMISSIONERS

These officials represent the entire county.

|                             |   |  |   |
|-----------------------------|---|--|---|
| Carol AICHELE, <i>Chair</i> | R | <a href="mailto:caichele@chesco.org">caichele@chesco.org</a> | 2 N. High Street<br>Suite 512, P.O. Box 2748<br>West Chester, PA 19380-0991<br>P: (610) 344-6100<br>F: (610) 344-5995 |
| Terence FARRELL             | R | <a href="mailto:tfarrell@chesco.org">tfarrell@chesco.org</a> |   |
| Kathi COZZONE               | D | <a href="mailto:kcozzone@chesco.org">kcozzone@chesco.org</a> |   |

### DISTRICT ATTORNEY

|             |   |   |
|-------------|---|---|
| Joe CARROLL | R | 201 West Market Street, Suite 4450, PO Box 2746, West Chester, PA 19380-0989<br>P: (610) 344-6801 |
|-------------|---|---|

### CONTROLLER

|                          |   |   |
|--------------------------|---|---|
| Valentino DIGIORGIO, III | R | 2 N. High Street, Suite 540, West Chester, PA 19380-0091<br>P: (610) 344-5912 |
|--------------------------|---|---|

## Delaware County [www.co.delaware.pa.us](http://www.co.delaware.pa.us)

County Board of Elections: (610) 891-4673  
Government Center, Ground Floor, 201 W. Front Street, Media, PA 19063

Some elected officials have more than one office. Their main contact information is provided.

| District | Name | Party | Main Contact Information | Local Contact Information |
|----------|------|-------|--------------------------|---------------------------|
|----------|------|-------|--------------------------|---------------------------|

### U.S. REPRESENTATIVE

U.S. Senators can be found on page 3

|          |              |   |  |   |
|----------|--------------|---|--|---|
| <b>1</b> | Robert BRADY | D | 206 Cannon HOB, Washington, DC. 20515<br>P: (202) 225-4731, F: (202) 225-0088<br><a href="http://www.brady.house.gov">http://www.brady.house.gov</a> | The Colony Building, 511-13 Welsh St., 1st Floor<br>Chester, PA 19013<br>P: (610) 874-7094, F: (610) 874-7193 |
| <b>7</b> | Joe SESTAK   | D | 1022 Longworth HOB, Washington, DC 20515<br>P: (202) 225-2011, F: (202) 226-0280<br><a href="http://sestak.house.gov">http://sestak.house.gov</a>    | 600 N. Jackson St., Suite 203, Media, PA 19063<br>P: (610) 892-8623, F: (610) 892-8628                        |

### STATE SENATORS

|           |                     |   |   |   |
|-----------|---------------------|---|---|---|
| <b>8</b>  | Anthony H. WILLIAMS | D | Senate Box 203008, Harrisburg, Pa 17120-3008<br>P: (717) 787-5970, F: (717) 787-0574<br><a href="http://senatoranthonywilliams.com">http://senatoranthonywilliams.com</a> | 440 Church Lane, Yeadon, PA 19050<br>P: (610) 284-7335, F: (610) 284-5955                             |
| <b>9</b>  | Dominic PILEGGI     | R | Senate Box 203009, Harrisburg, PA 17120<br>P: (717) 787-4712, F: (717) 783-7490<br><a href="http://www.senatorpileggi.com">http://www.senatorpileggi.com</a>              | 100 Evergreen Drive, Suite 113<br>Glen Mills, PA 19342<br>P: (610) 358-5183, F: (610) 358-5184        |
| <b>17</b> | Daylin LEACH        | D | Senate Box 203017, Harrisburg, PA 17120-3017<br>P: (717) 787-5544, F: (717) 705-7741<br><a href="http://www.senatorleach.com">http://www.senatorleach.com</a>             | 601 S. Henderson Road, Suite 208<br>King of Prussia, PA 19406<br>P: (610) 768-4200, F: (610) 768-4204 |

# Delaware County

Some elected officials have more than one office. Their main contact information is provided.

| District | Name | Party | Main Contact Information | Local Contact Information |
|----------|------|-------|--------------------------|---------------------------|
|----------|------|-------|--------------------------|---------------------------|

## STATE SENATORS

|           |                          |          |   |   |
|-----------|--------------------------|----------|---|---|
| <b>26</b> | <b>Edwin B. ERICKSON</b> | <b>R</b> | Senate Box 203026, Harrisburg, PA 17120-3026<br>P: (717) 787-1350, F: (717) 787-0196<br><a href="http://www.senatorerickson.com">http://www.senatorerickson.com</a> | 5037 Township Line Road<br>Drexel Hill, PA 19026-4821<br>P: (610) 853-4100, F: (610) 853-4136 |
|-----------|--------------------------|----------|---|---|

## STATE REPRESENTATIVES

|            |                               |          |   |  |
|------------|-------------------------------|----------|---|--|
| <b>159</b> | <b>Thaddeus KIRKLAND</b>      | <b>D</b> | PO Box 202159, Harrisburg, PA 17120-2159<br>P: (717) 787-5881, F: (717) 787-9074<br><a href="http://www.pahouse.com/kirkland">http://www.pahouse.com/kirkland</a>   | 7 West 10th Street, Marcus Hook, PA 19061<br>P: (610) 876-6420, F: (610) 447-3004                                      |
| <b>160</b> | <b>Stephen BARRAR</b>         | <b>R</b> | PO Box 202160, Harrisburg, PA 17120-2160<br>P: (717) 783-3038, F: (717) 787-7604<br><a href="http://www.stevebarrar.com">http://www.stevebarrar.com</a>             | Willowbrook Shpg. Center, 3358 Chichester Ave.<br>Suite 13, Boothwyn, PA 19061<br>P: (610) 485-7606, F: (610) 485-8277 |
| <b>161</b> | <b>Bryan R. LENTZ</b>         | <b>D</b> | PO Box 202161, Harrisburg, PA 17120-2161<br>P: (717) 787-8574, F: (717) 780-4777<br><a href="http://www.pahouse.com/lentz">http://www.pahouse.com/lentz</a>         | 630 Fairview Road, Suite 104<br>Swarthmore, PA 19081<br>P: (610) 544-7301, F: (610) 544-7305                           |
| <b>162</b> | <b>Nick MICCARELLI</b>        | <b>R</b> | PO Box 202162, Harrisburg, PA 17120-2162<br>P: (717) 787-3472, F: (717) 772-5569<br><a href="http://repmiccarelli.net">http://repmiccarelli.net</a>                 | 605 East Chester Pike, Ridley Park, PA 19078<br>P: (610) 534-1002, F: (610) 534-1710                                   |
| <b>163</b> | <b>Nicholas A. MICOZZIE</b>   | <b>R</b> | PO Box 202163, Harrisburg, PA 17120-2163<br>P: (717) 783-8808, F: (717) 783-0688<br><a href="http://www.repmicozzie.com">http://www.repmicozzie.com</a>             | 6 South Springfield Road<br>Clifton Heights, PA 19018<br>P: (610) 259-2820, F: (610) 259-7019                          |
| <b>164</b> | <b>Mario J. CIVERA, JR.</b>   | <b>R</b> | PO Box 202164, Harrisburg, PA 17120-2164<br>P: (717) 787-3850, F: (717) 705-1851<br><a href="http://www.mariocivera.com">http://www.mariocivera.com</a>             | Barclay Square Shopping Center<br>1500 Garrett Road, Upper Darby, PA 19082<br>P: (610) 853-4115, F: (610) 352-3389     |
| <b>165</b> | <b>William F. ADOLPH, JR.</b> | <b>R</b> | PO Box 202165, Harrisburg, PA 17120-2165<br>P: (717) 787-1248, F: (717) 705-2095<br><a href="http://www.williamadolph.com">http://www.williamadolph.com</a>         | 920 West Sproul Road, Springfield, PA 19064<br>P: (610) 544-9878, F: (610) 338-2294                                    |
| <b>166</b> | <b>Greg VITALI</b>            | <b>D</b> | PO Box 202166, Harrisburg, PA 17120-2166<br>P: (717) 787-7647, F: (717) 705-2089<br><a href="http://www.pahouse.com/vitali">http://www.pahouse.com/vitali</a>       | 1001 East Darby Road, Havertown, PA 19083<br>P: (610) 789-3900, F: (215) 560-4197                                      |
| <b>168</b> | <b>Thomas H. KILLION</b>      | <b>R</b> | PO Box 202168, Harrisburg, PA 17120-0168<br>P: (717) 772-0855, F: (717) 772-9856<br><a href="http://www.repkillion.com">http://www.repkillion.com</a>               | 4641 West Chester Pike<br>Newtown Square, PA 19073<br>P: (610) 325-1541, F: (610) 325-1546                             |
| <b>185</b> | <b>Robert C. DONATUCCI</b>    | <b>D</b> | PO Box 202185, Harrisburg, PA 17120-2185<br>P: (717) 783-8634, F: (717) 772-9888<br><a href="http://www.pahouse.com/donatucci">http://www.pahouse.com/donatucci</a> | 713 Sharon Avenue, Office 1B<br>Sharon Hill, PA 19079<br>P: (610) 522-2290, F: (610) 522-2576                          |
| <b>191</b> | <b>Ronald G. WATERS</b>       | <b>D</b> | PO Box 202191, Harrisburg, PA 17120-2191<br>P: (717) 772-9850, F: (717) 783-1516<br><a href="http://www.pahouse.com/waters">http://www.pahouse.com/waters</a>       | 6027 Ludlow Street Unit A<br>Philadelphia, PA 19139<br>P: (215) 748-6712, F: (215) 748-1687                            |

## COUNTY COUNCIL

These officials represent the entire county.

|   |          |  |  |
|---|----------|--|--|
| Linda A. <b>CARTISANO</b> , <i>Chair</i>  | <b>R</b> | <a href="mailto:cartisanol@co.delaware.pa.us">cartisanol@co.delaware.pa.us</a>   | Government Center Building<br>201 West Front Street<br>Media, PA 19063<br>P: (610) 891-4000<br>F: (610) 892-9788 |
| John J. <b>WHELAN</b> , <i>Vice Chair</i> | <b>R</b> | <a href="mailto:whelank@co.delaware.pa.us">whelank@co.delaware.pa.us</a>         |  |
| Christine Fizzano <b>CANNON</b>           | <b>R</b> | <a href="mailto:fizzanoc@co.delaware.pa.us">fizzanoc@co.delaware.pa.us</a>       |  |
| Andy <b>LEWIS</b>                         | <b>R</b> | <a href="mailto:lewisa@co.delaware.pa.us">lewisa@co.delaware.pa.us</a>           |  |
| Tom <b>McGARRIGLE</b>                     | <b>R</b> | <a href="mailto:mcgarriglet@co.delaware.pa.us">mcgarriglet@co.delaware.pa.us</a> |  |

## DISTRICT ATTORNEY

|                         |          |   |
|-------------------------|----------|---|
| G. Michael <b>GREEN</b> | <b>R</b> | Delaware County Courthouse, 201 W. Front Street, Media, PA 19063, P: (610) 891-4161 |
|-------------------------|----------|---|

# Who Represents You in the Suburbs (continued)

## Delaware County

Some elected officials have more than one office. Their main contact information is provided.

| District | Name | Party | Main Contact Information | Local Contact Information |
|----------|------|-------|--------------------------|---------------------------|
|----------|------|-------|--------------------------|---------------------------|

### CONTROLLER

|                                   |          |   |  |  |
|-----------------------------------|----------|---|--|--|
| Cynthia Felzer<br><b>LEITZELL</b> | <b>R</b> | Government Center, Room 227, 201 W. Front Street, Media, PA 19063<br>P: (610) 891-4441, F: (610) 566-3256 |  |  |
|-----------------------------------|----------|---|--|--|

## Montgomery County [www.montcopa.org](http://www.montcopa.org)

County Board of Elections: (610) 278-3280

Montgomery County Courthouse, PO Box 311, Norristown, PA 19404-0311

Some elected officials have more than one office. Their main contact information is provided.

| District | Name | Party | Main Contact Information | Local Contact Information |
|----------|------|-------|--------------------------|---------------------------|
|----------|------|-------|--------------------------|---------------------------|

### U.S. REPRESENTATIVE

U.S. Senators can be found on page 3

|           |                               |          |   |  |
|-----------|-------------------------------|----------|---|--|
| <b>2</b>  | Chaka<br><b>FATTAH</b>        | <b>D</b> | 2301 Rayburn HOB, Washington, D.C. 20515<br>P: (202) 225-4001, F: (202) 225-5392<br><a href="http://www.house.gov/fattah">http://www.house.gov/fattah</a>               | 4104 Walnut Street, Philadelphia, PA 19104<br>P: (215) 387-6404, F: (215) 387-6407     |
| <b>6</b>  | Jim<br><b>GERLACH</b>         | <b>D</b> | 308 Cannon HOB, Washington, DC 20515<br>P: (202) 225-4315, F: (202) 225.8440<br><a href="http://gerlach.house.gov">http://gerlach.house.gov</a>                         | 580 Main St. Suite #4, Trappe, PA 19426<br>P: (610) 409-2780, F: (610) 409.7988        |
| <b>7</b>  | Joe<br><b>SESTAK</b>          | <b>D</b> | 1022 Longworth HOB, Washington, DC 20515<br>P: (202) 225-2011, F: (202) 226-0280<br><a href="http://sestak.house.gov">http://sestak.house.gov</a>                       | 600 N. Jackson St., Suite 203, Media, PA 19063<br>P: (610) 892-8623, F: (610) 892-8628 |
| <b>8</b>  | Patrick J.<br><b>MURPHY</b>   | <b>D</b> | 1609 Longworth HOB, Washington, DC 20515<br>P: (202) 225-4276, F: (202) 225-9511<br><a href="http://www.patrickmurphy.house.gov">http://www.patrickmurphy.house.gov</a> | 414 Mill Street, Bristol, PA 19007<br>P: (215) 826-1963, F: (215) 826-1997             |
| <b>13</b> | Allyson Y.<br><b>SCHWARTZ</b> | <b>D</b> | 330 Cannon HOB, Washington, D.C. 20515<br>P: (202) 225-6111, F: (202) 226-0611<br><a href="http://schwartz.house.gov">http://schwartz.house.gov</a>                     | 706 West Avenue, Jenkintown, PA 19046<br>P: (215) 517-6572, F: (215) 517-6575          |
| <b>16</b> | Charles W.<br><b>DENT</b>     | <b>R</b> | 116 Cannon HOB, Washington, DC 20515<br>P: (202) 225-6411, F: (202) 226-0778<br><a href="http://dent.house.gov">http://dent.house.gov</a>                               | 206 Main Street, East Greenville, PA 18041<br>P: (215) 541-4106, F: (215) 541-4109     |

### STATE SENATORS

|           |                                      |          |   |   |
|-----------|--------------------------------------|----------|---|---|
| <b>4</b>  | Leanna M.<br><b>WASHINGTON</b>       | <b>D</b> | Senate Box 203004, Harrisburg, PA 17120-3004<br>P: (717) 787-1427, F: (717) 772-0572<br><a href="http://www.senatorwashington.com">http://www.senatorwashington.com</a> | 1168 Easton Road, Roslyn, PA 19001<br>P: (215) 517-1434, F: (215) 753-4538  |
| <b>7</b>  | Vincent J.<br><b>HUGHES</b>          | <b>D</b> | Senate Box 203007, Harrisburg, PA 17120-3007<br>P: (717) 787-7112, F: (717) 772-0579<br><a href="http://www.senatorhughes.com">http://www.senatorhughes.com</a>         | 4601 Market Street, First Floor<br>Philadelphia, PA 19139-4616<br>P: (215) 471-0490, F: (215) 560-3434              |
| <b>10</b> | Charles T.<br><b>MCILHINNEY, Jr.</b> | <b>R</b> | Senate Box 203010, Harrisburg, PA 17120<br>P: (717) 787-7305, F: (717) 783-5962<br><a href="http://www.senatormcilhinney.com">http://www.senatormcilhinney.com</a>      | 22 South Main Street, Suite 220<br>Doylestown, PA 18901<br>P: (215) 489-5000, F: (215) 489-5200                     |
| <b>12</b> | Stewart J.<br><b>GREENLEAF</b>       | <b>R</b> | Senate Box 203012, Harrisburg, PA 17120-3012<br>P: (717) 787-6599, F: (717) 783-7328<br><a href="http://www.senatorgreenleaf.com">http://www.senatorgreenleaf.com</a>   | 711 North York Road, Suite 1<br>Willow Grove, PA 19090-2124<br>P: (215) 657-7700, F: (215) 657-1885                 |
| <b>17</b> | Daylin<br><b>LEACH</b>               | <b>D</b> | Box 203017, Harrisburg, PA 17120-3017<br>P: (717) 787-5544, F: (717) 705-7741<br><a href="http://www.senatorleach.com">http://www.senatorleach.com</a>                  | 601 S. Henderson Road, Suite 208<br>King of Prussia, PA 19406<br>P: (610) 768-4200, F: (610) 768-4204               |
| <b>19</b> | Andrew E.<br><b>DINNIMAN</b>         | <b>D</b> | Senate Box 203019, Harrisburg, PA 17120-3019<br>P: (717) 787-5709, F: (717) 787-4384<br><a href="http://www.senatorinniman.com">http://www.senatorinniman.com</a>       | One North Church Street<br>West Chester, PA 19380<br>P: (610) 692-2112, F: (610) 436-1721                           |
| <b>24</b> | Robert C.<br><b>WONDERLING</b>       | <b>R</b> | Senate Box 203024, Harrisburg, PA 17120-3024<br>P: (717) 787-3110, F: (717) 787-8004<br><a href="http://www.senatorwonderling.com">http://www.senatorwonderling.com</a> | 427 West Main Street<br>Lansdale, PA 19446-2007<br>P: (215) 368-1500, F: (215) 560-4896                             |
| <b>44</b> | John C.<br><b>RAFFERTY, Jr.</b>      | <b>R</b> | Senate Box 203044, Harrisburg, PA 17120-3044<br>P: (717) 787-1398, F: (717) 783-4587<br><a href="http://www.senatorrafferty.com">http://www.senatorrafferty.com</a>     | Collegeville Professional Center<br>3770 Ridge Pike, Collegeville, PA 19426<br>P: (610) 831-8830, F: (610) 831-8837 |

# Montgomery County

Some elected officials have more than one office.  
Their main contact information is provided.

| District | Name | Party | Main Contact Information | Local Contact Information |
|----------|------|-------|--------------------------|---------------------------|
|----------|------|-------|--------------------------|---------------------------|

## STATE REPRESENTATIVES

|            |                               |          |   |  |
|------------|-------------------------------|----------|---|--|
| <b>53</b>  | Robert W.<br><b>GODSHALL</b>  | <b>R</b> | PO Box 202053, Harrisburg, PA 17120-2053<br>P: (717) 783-6428, F: (717) 787-7424<br><a href="http://www.bobgodshall.com">http://www.bobgodshall.com</a>             | 1702 Cowpath Road, Hatfield, PA 19440<br>P: (215) 368-3500, F: (215) 361-4220                                  |
| <b>61</b>  | Kate<br><b>HARPER</b>         | <b>R</b> | PO Box 202061, Harrisburg, PA 17120-2061<br>P: (717) 787-2801, F: (717) 787-2022<br><a href="http://www.kateharper.net">http://www.kateharper.net</a>               | 1515 Dekalb Pike, Suite 106<br>Blue Bell, PA 19422<br>P: (610) 277-3230, F: (610) 270-1677                     |
| <b>70</b>  | Matthew D.<br><b>BRADFORD</b> | <b>D</b> | PO Box 202070, Harrisburg, PA 17120-2070<br>P: (717) 772-2572, F: (717) 772-2360<br><a href="http://www.pahouse.com/bradford">http://www.pahouse.com/bradford</a>   | 1846 Markley St., Norristown, PA 19401<br>P: (610) 270-1150, F: (610) 270-1895                                 |
| <b>146</b> | Thomas J.<br><b>QUIGLEY</b>   | <b>R</b> | PO Box 202146, Harrisburg, PA 17120-2146<br>P: (717) 772-9963, F: (717) 772-2434<br><a href="http://www.repquigley.com">http://www.repquigley.com</a>               | 1963 East High Street, Suite 100<br>Pottstown, PA 19464<br>P: (610) 326-9563, F: (610) 718-5787                |
| <b>147</b> | Bob<br><b>MENSCH</b>          | <b>R</b> | PO Box 202147, Harrisburg, PA 17120-2147<br>P: (717) 787-6937, F: (717) 260-6522<br><a href="http://www.repmensch.com">http://www.repmensch.com</a>                 | 105 Memorial Drive, Schwenksville, PA 19473<br>P: (610) 287-4181, F: (610) 287-4182                            |
| <b>148</b> | Michael F.<br><b>GERBER</b>   | <b>D</b> | PO Box 202148, Harrisburg, PA 17120-2148<br>P: (717) 787-9475, F: (717) 787-0861<br><a href="http://www.pahouse.com/gerber">http://www.pahouse.com/gerber</a>       | 527 Fayette Street, Conshohocken, PA 19428<br>P: (610) 832-1679, F: (610) 832-1684                             |
| <b>149</b> | Tim<br><b>BRIGGS</b>          | <b>D</b> | PO Box 202149, Harrisburg, PA 17120-2149<br>P: (717) 705-7011, F: (717) 772-9860<br><a href="http://www.pahouse.com/briggs">http://www.pahouse.com/briggs</a>       | 677 West DeKalb Pike, 2nd Floor<br>King of Prussia, PA 19406-3065<br>P: (610) 768-3135, F: (610) 768-3112      |
| <b>150</b> | Mike<br><b>VEREB</b>          | <b>R</b> | PO Box 202150, Harrisburg, PA 17120-2150<br>P: (717) 705-7164, F: (717) 260-6522<br><a href="http://www.repvereb.com">http://www.repvereb.com</a>                   | 3950 Germantown Pike, Collegeville, PA 19426<br>P: (610) 409-2615, F: (610) 409-2619                           |
| <b>151</b> | Rick<br><b>TAYLOR</b>         | <b>D</b> | PO Box 202151, Harrisburg, PA 17120-2151<br>P: (717) 705-2048, F: (717) 780-4776<br><a href="http://www.pahouse.com/taylor">http://www.pahouse.com/taylor</a>       | 701 Horsham Road, Suite 101<br>Horsham, PA 19044<br>P: (215) 441-1030, F: (215) 441-1036                       |
| <b>152</b> | Thomas P.<br><b>MURT</b>      | <b>R</b> | PO Box 202152, Harrisburg, PA 17120-2152<br>P: (717) 787-6886, F: (717) 260-6500<br><a href="http://www.repmurt.com">http://www.repmurt.com</a>                     | 19 South York Road, Hatboro, PA 19040<br>P: (215) 674-3755, F: (215) 674-3021                                  |
| <b>153</b> | Josh<br><b>SHAPIRO</b>        | <b>D</b> | PO Box 202153, Harrisburg, PA 17120-2153<br>P: (717) 783-7619, F: (717) 780-4754<br><a href="http://www.pahouse.com/shapiro">http://www.pahouse.com/shapiro</a>     | 1175 Old York Road, Abington, PA 19001<br>P: (215) 517-6800, F: (215) 517-6828                                 |
| <b>154</b> | Lawrence H.<br><b>CURRY</b>   | <b>D</b> | PO Box 202154, Harrisburg, PA 17120-2154<br>P: (717) 783-1079, F: (717) 787-2713<br><a href="http://www.pahouse.com/curry">http://www.pahouse.com/curry</a>         | 1 Jenkintown Station, Ste 211<br>115 West Avenue, Jenkintown, PA 19046<br>P: (215) 572-5210, F: (215) 517-1423 |
| <b>157</b> | Paul J.<br><b>DRUCKER</b>     | <b>D</b> | PO Box 202157, Harrisburg, PA 17120-2157<br>P: (717) 705-2003, F: (717) 772-2943<br><a href="http://www.pahouse.com/drucker">http://www.pahouse.com/drucker</a>     | 992 Old Eagle School Road<br>Suite 909, Wayne, PA 19087<br>P: (610) 688-5691, F: (610) 688-5695                |
| <b>170</b> | Brendan F.<br><b>BOYLE</b>    | <b>D</b> | PO Box 202170, Harrisburg, PA 17120-2170<br>P: (717) 787-3055, F: (717) 772-9861<br><a href="http://www.pahouse.com/boyle">http://www.pahouse.com/boyle</a>         | 14230 Bustleton Avenue, Philadelphia, PA 19116<br>P: (215) 676-0300, F: (267) 988-6257                         |
| <b>194</b> | Kathy<br><b>MANDERINO</b>     | <b>D</b> | PO Box 202194, Harrisburg, PA 17120-2194<br>P: (717) 787-1254, F: (717) 780-4770<br><a href="http://www.pahouse.com/manderino">http://www.pahouse.com/manderino</a> | 6511 Ridge Avenue, Philadelphia, PA 19128<br>P: (215) 482-8726, F: (215) 482-9066                              |

# Who Represents You in the Suburbs (continued)

## Montgomery County

Some elected officials have more than one office. Their main contact information is provided.

| District | Name | Party | Main Contact Information | Local Contact Information |
|----------|------|-------|--------------------------|---------------------------|
|----------|------|-------|--------------------------|---------------------------|

### COUNTY COMMISSIONERS

These officials represent the entire county.

|  |   |  |   |
|--|---|--|---|
| James R.<br><b>MATTHEWS</b> , <i>Chairman</i>      | R | <a href="mailto:jmatthew@mail.montcopa.org">jmatthew@mail.montcopa.org</a> | One Montgomery Plaza<br>8th Floor Suite 800<br>Norristown, PA 19401<br>P: (610) 278-3020<br>F: (610) 278-5943 |
| Joseph M.<br><b>HOEFFEL</b> , <i>Vice Chairman</i> | D | <a href="mailto:jhoeffel@mail.montcopa.org">jhoeffel@mail.montcopa.org</a> |   |
| Bruce L.<br><b>CASTOR</b> , Jr.                    | R | <a href="mailto:bcastor@mail.montcopa.org">bcastor@mail.montcopa.org</a>   |   |

### DISTRICT ATTORNEY

|                             |   |  |
|-----------------------------|---|--|
| Risa Vetri<br><b>FERMAN</b> | R | Montgomery County Court House, 4th Floor, PO Box 311, Norristown, PA 19401<br>P: (610) 278-3090, F: (610) 278-3095 |
|-----------------------------|---|--|

### CONTROLLER

|                           |   |   |
|---------------------------|---|---|
| Diane B.<br><b>MORGAN</b> | R | One Montgomery Plaza, Suite 508, Norristown, PA 19401<br>P: (610) 278-3072, F: (610) 278-3300 |
|---------------------------|---|---|

# FREQUENTLY ASKED QUESTIONS

## AM I ELIGIBLE TO VOTE?

You are eligible to vote if you are (1) a U.S. Citizen for at least 30 days before the election, (2) a resident of Pennsylvania and the election district in which you wish to register for at least 30 days before the next election, and (3) at least 18 years old on Election Day, although you can register to vote before your 18th birthday.

## HOW DO I REGISTER TO VOTE?

You can obtain voter registration forms online at [www.votespa.com](http://www.votespa.com) or by calling the Department of State at 1-800-552-VOTE. You must re-register to vote if there is a change in your name, address or political party.

## DO I NEED IDENTIFICATION IN ORDER TO VOTE?

Federal and state laws require all electors voting in a division for the first time to provide one of following:

### Photo ID (must be valid)

- Driver's license or card issued by the PA Department of Transportation
- Identification issued by another PA agency or by the U.S. Government, including passport or Armed Forces identification
- Student or employee identification

### Non-photo ID (must include voter's name and address)

- Voter's identification card issued by the voter registration commission
- Non-photo identification issued by PA or by the U.S. Government
- Firearm permit
- Current utility bill, bank statement or paycheck
- Government check

## WHAT IF I AM UNABLE TO VOTE IN PERSON?

If you are registered and qualified to vote, but are unable to vote in person on Election Day, you can still vote by ABSENTEE BALLOT. To obtain an absentee ballot, visit or contact your County Board of Elections or download an application by going to [www.votespa.com](http://www.votespa.com).

## WHAT IF MY POLLING PLACE IS NOT HANDICAPPED ACCESSIBLE?

If your polling place is not handicapped accessible, you can ask the County Board of Elections to provide you with an ALTERNATIVE BALLOT. Alternative ballots must be completed, signed and received by your County Board of Elections no later than 8:00 p.m. on Election Day.

## WHEN DO THE POLLS OPEN AND CLOSE?

Polling places open at 7 a.m. and close at 8 p.m. If you are in line by 8 p.m., you must be allowed to vote.

## WHAT IF I AM DENIED THE RIGHT TO VOTE AT MY POLLING PLACE?

If your name does not appear in the poll book, or if you don't have proper identification, you can vote by using a PROVISIONAL BALLOT (a paper ballot). To check if your vote was counted, call 1-877-VOTE PA three days after the election.

# COMMITTEE OF SEVENTY AND YOU!

- **Stay Informed** – Sign up for email alerts and our mailing list! Visit [www.seventy.org](http://www.seventy.org) or call 215-557-3600.
- **Find Your Polling Place and Elected Officials** – Visit [www.seventy.org/cac](http://www.seventy.org/cac) or call 1-866-268-8603.
- **Volunteer on Election Day** – Visit [www.seventy.org/volunteer](http://www.seventy.org/volunteer) or call 215-557-3600.
- **Learn How to Run for Political Office** – Visit [www.seventy.org/howtorun](http://www.seventy.org/howtorun) or call 215-557-3600.
- **SUPPORT US!** – **The Committee of Seventy does not accept government funds. We rely on contributions from foundations, corporations, law firms and individuals. To make a tax-deductible donation, visit [www.seventy.org/donate](http://www.seventy.org/donate) or call 215-557-3600.**

---

**The Committee of Seventy thanks Thomas Skelton Harrison Foundation and Drexel University for their generous support of our 2009 Citizen's Guide.**

The Thomas Skelton Harrison Foundation is a nonpartisan, nonprofit foundation created by the will of Thomas Skelton Harrison, to promote good government and sound municipal finance in the City of Philadelphia. The Foundation encourages organizations performing work relevant to those goals to apply for Harrison grants, particularly for innovative projects that may demonstrate the benefit of new approaches or techniques. Applications should be submitted no later than November 1, c/o David F. Abernethy, Secretary, Drinker Biddle & Reath LLP, One Logan Square, Philadelphia, PA 19103-6996.

Founded in Philadelphia in 1891, Drexel is a comprehensive national research university with more than 22,000 students, ranked among the top 100 national universities and the six most innovative according to *U.S. News & World Report*.



The Committee of **Seventy**

*Clean and effective government. Fair elections. Informed citizens.*

The Committee of Seventy is a 501 (c)(3) non-profit, non-partisan organization conducting a permanent campaign to improve the Philadelphia region by demanding ethical conduct of elected officials, promoting government efficiency, safeguarding elections and educating citizens.

8 Penn Center, Suite 1002, 1628 John F. Kennedy Boulevard, Philadelphia, PA 19103  
Phone: 215-557-3600 Fax: 215-557-3608 Website: [www.seventy.org](http://www.seventy.org)

Daniel K. Fitzpatrick, Chairman of the Board    Zachary Stalberg, President and CEO