

ESTIMATES OF TOTAL POPULATION OF AREAS IN SUFFOLK

Methodology

These estimates of total population at mid-year have been developed in the Environment and Transport Directorate of Suffolk County Council to provide more up-to-date information than the results of the 2001 Census.

They refer to residents in Suffolk and include both British and American Armed Forces, plus their dependants counted in the area where they live and prison numbers as recorded by the Census.

These estimates use information from local sources and provide detail at parish level, a lower spatial level than is provided by the Office for National Statistics (District & Super Output Area). Consequently the District and County totals differ from those of the Office for National Statistics that can be found on www.statistics.gov.uk/popest, which use a nationally consistent methodology that does not take account of the special population characteristics of Suffolk.

The starting point for this suite of estimates are the results of the 2001 Census and population changes based on housing stock changes between Census day (29 April) and 30 June 2001. Individual parish totals sum to the 2001 estimates at mid year for each District calculated by the Office for National Statistics.

Subsequent estimates for 2002 onwards are updates that incorporate the following:

- British births during the previous five years
- Children living in Suffolk attending Suffolk County Council schools
- Electoral Registers
- Numbers in the Armed Forces in the area
- Total number of prisoners
- Various Countywide indicators produced annually by the Office for National Statistics

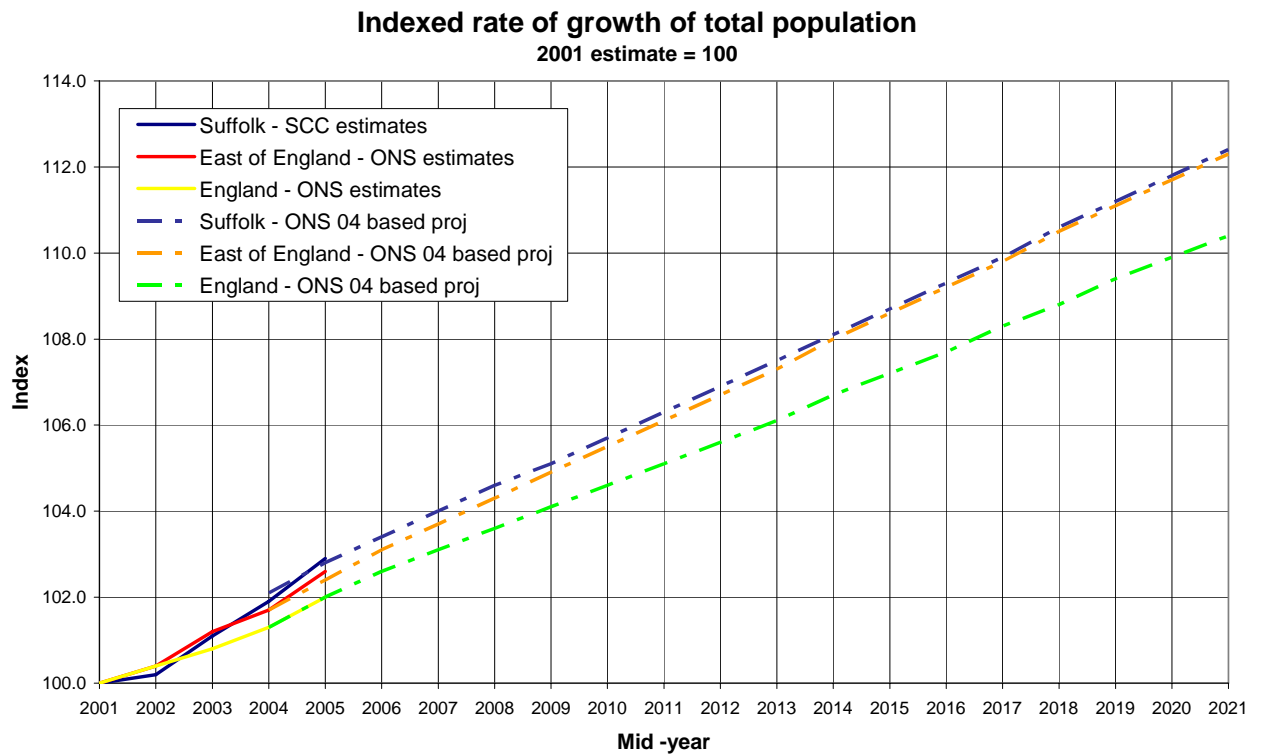
There are inconsistencies between these estimates and those for 1991 to 2000 owing to two issues:

- The suite of estimates for the previous decade were based on the results of the 1991 Census to which a large number of variables had been progressively incorporated; so that by mid-2000 the estimates are less reliable.
- After the 2001 Census, the Office for National Statistics reduced its figures for international migration, a major cause of population change during the previous decade.

Please note that these counts are estimates and have been rounded for convenience to the nearest ten.

Commentary

Since 2001 Suffolk's population has grown by nearly 20,000 (2.9%), a much faster rate than for England as a whole and also at a greater rate than projected by the Office for National Statistics in its 2004-based trend projection as shown by the graph below.

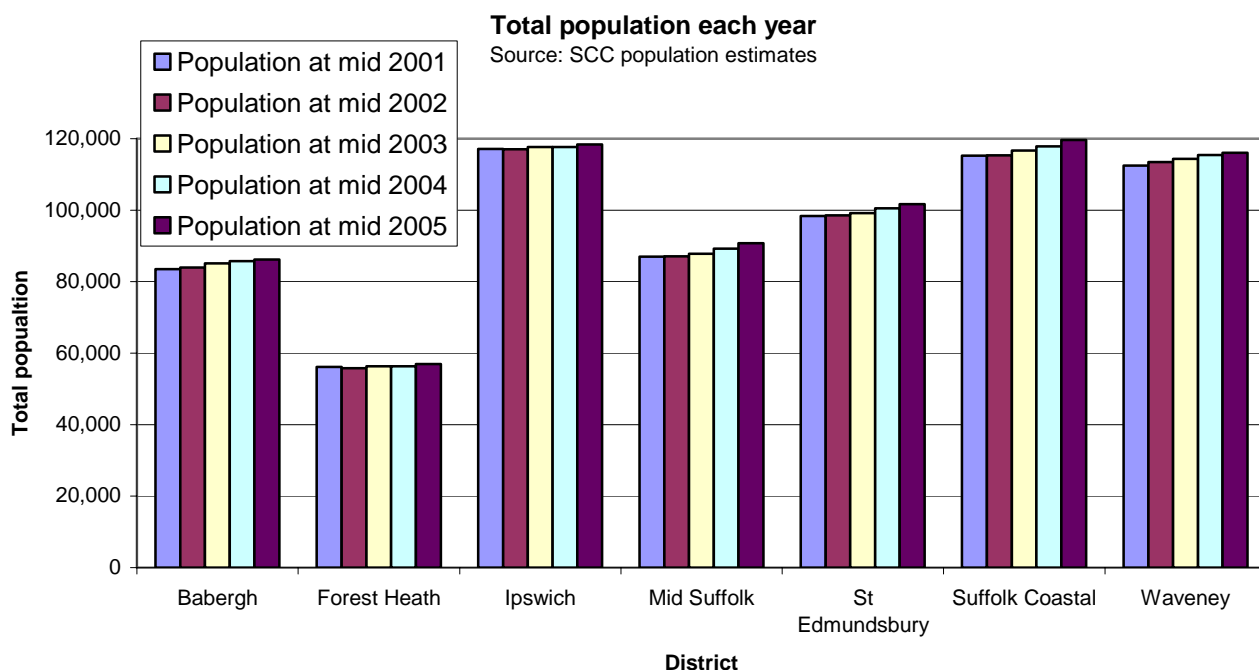


The Council's figures show that Forest Heath has grown the least since 2001 and has the smallest District population while Mid Suffolk has grown the fastest (4.3%) followed by Suffolk Coastal (3.6%). Suffolk Coastal's total population is currently higher than that of Ipswich Borough reflecting the high levels of housing completions and in migration to Suffolk Coastal in recent years although future plans for development in Ipswich is likely to reverse this.

References:

ONS mid-year population estimates on www.statistics.gov.uk/popest

ONS 2004-based population projection on <http://www.statistics.gov.uk/statbase/Product.asp?vlnk=997>



The map at the end of this document shows the change in population since 2001 by parish according to the County Council estimates. The increasing concentration in the main towns of Ipswich, Bury St Edmunds and Lowestoft, other towns such as Stowmarket, Haverhill, Sudbury, Newmarket and smaller market towns such as Saxmundham, Halesworth, and Hadleigh, is apparent. Almost 60% of the population growth has occurred in Suffolk's towns and the Ipswich corridor. Listed below are the areas with population increases of at least 500 during mid-2001 to mid-2005.

Rank	Town or parish	Increase in population since 2001	Percentage increase in population since 2001
1	Kesgrave	1,960	21.6
2	Bury St Edmunds	1,580	4.5
3	Ipswich	1,240	1.1
4	Carlton Colville	1,040	15.6
5	Hadleigh	900	12.4
6	Stowmarket	860	5.8
7	Oulton	820	25.5
8	Saxmundham	680	25.1
9	Haverhill	640	2.9
10	Rendlesham	550	33.4
11	Lowestoft	520	0.9

- When growth is expressed as a percentage increase, the communities of Rendlesham, Oulton and Saxmundham grew the fastest.
- Kesgrave has seen the largest increase in the population since 2001, since when about 1,000 houses have been built. The increase in population of nearly 2,000 in four years equates to an increase of nearly a quarter of the total population of the town.

- Since 2001, there have been well over 2,000 residential properties built in Ipswich, more than any other individual place in Suffolk, but the population has grown by about 1,200, suggesting many new properties are either empty, occupied temporarily or enabling the existing residents to form smaller households.
- The town with the third highest number of extra homes is Bury St Edmunds, which has the second largest population increase.
- Stowmarket and Haverhill have also witnessed large volumes of extra housing which are clearly fuelling the population increases. Further information on changes to the housing stock can be found on <http://www.suffolk.gov.uk/Environment/FactsAndFigures/HousingStock.htm>

However what is also apparent is the decline in population in some parishes particularly in Suffolk Coastal. The biggest declines have been in Sutton (-582) due to movements in armed forces, Aldeburgh (-106), Southwold (-80) and Woodbridge (-50). More research is required to establish the cause of the decline, but it is likely to be due to the growth in second homes and the ageing population effect, where people are living longer, often leaving one person in a house. This is slowing the natural turnover of homes and the ability for new households, such as families, to move in. Over 6% of Suffolk's 477 parishes – 30 in all - have lost more than 20 people, whilst many more have seen some decline. In some parishes the decline is caused by difficulties allocating children to the geographical area rather than an actual decline and a small decrease in the population is unlikely to be very noticeable in an individual community. Many declining parishes are located at the southern end of the coastal strip, but otherwise the decline does not form specific geographical clusters. This issue needs to be closely monitored since a continual decline could eventually have an impact on the viability of village shops, facilities and schools; declining school rolls have already been observed in the Felixstowe area for example.

To conclude, these were the top ten towns in terms of size in Suffolk in 2005:

Rank	Town or parish	Total population in 2005
1	Ipswich	118,400
2	Lowestoft	58,300
3	Bury St Edmunds	36,640
4	Felixstowe	24,000
5	Haverhill	22,720
6	Stowmarket	15,740
7	Newmarket	15,320
8	Sudbury	12,080
9	Kesgrave	11,020
10	Mildenhall	10,120

- For the first time Kesgrave is in the top ten, pushing Beccles with a population of 9,850 into 11th place.
- Newmarket has always been larger than Stowmarket but as there has been a considerable volume of house building in Stowmarket recently and not much change in the population of Newmarket, Stowmarket is now the larger of the two.

Suffolk and the Districts

Area	Mid 2001	Mid 2002	Mid 2003	Mid 2004	Mid 2005
SUFFOLK	669,920	671,210	677,290	682,710	689,570
Babergh	83,540	83,960	85,160	85,770	86,170
Forest Heath	56,140	55,820	56,330	56,330	56,940
Ipswich	117,160	117,030	117,650	117,640	118,400
Mid Suffolk	87,020	87,120	87,850	89,220	90,760
St Edmundsbury	98,320	98,500	99,190	100,500	101,660
Suffolk Coastal	115,240	115,340	116,710	117,860	119,600
Waveney	112,500	113,440	114,400	115,400	116,040

Parishes and towns in Babergh

Parish	Mid 2001	Mid 2002	Mid 2003	Mid 2004	Mid 2005
Acton	1,800	1,790	1,810	1,790	1,780
Aldham	200	200	200	200	200
Alpheton	240	240	250	250	260
Arwarton	110	100	110	100	110
Assington	370	360	380	380	380
Belstead	190	190	200	190	190
Bentley	730	740	750	750	750
Bildeston	1,010	960	960	970	960
Boxford	1,260	1,270	1,280	1,270	1,270
Boxted	110	100	110	120	120
Brantham	2,610	2,620	2,620	2,640	2,650
Brent Eleigh	170	180	190	190	180
Brettenham	240	250	260	260	270
Bures St. Mary	900	900	920	930	940
Burstall	190	200	200	200	200
Capel St. Mary	2,990	2,990	2,970	2,940	2,940
Chattisham	140	140	140	140	140
Chelmondiston	1,020	1,000	1,000	990	990
Chelsworth	150	140	140	140	140
Chilton	380	390	390	400	400
Cockfield	840	850	860	840	840
Copdock and Washbrook	1,100	1,100	1,130	1,130	1,130
East Bergholt	2,690	2,700	2,750	2,850	2,950
Edwardstone	340	340	340	350	360
Elmsett	730	720	750	770	760
Freston	120	130	120	120	120
Glemsford	3,290	3,330	3,380	3,350	3,360
Great Cornard	8,000	7,980	8,060	8,060	8,060
Great Waldingfield	1,460	1,440	1,440	1,450	1,460
Groton	220	220	220	220	240
Hadleigh	7,240	7,460	7,880	8,140	8,150

Parishes and towns in Babergh (cont.)

Parish	Mid 2001	Mid 2002	Mid 2003	Mid 2004	Mid 2005
Harkstead	280	270	270	280	280
Hartest	430	430	430	430	440
Higham	130	130	140	140	140
Hintlesham	560	550	550	560	580
Hitcham	600	610	610	620	620
Holbrook	2,320	2,310	2,320	2,420	2,420
Holton St. Mary	210	220	200	210	220
Kersey	350	340	340	340	340
Kettlebaston	60	70	70	70	70
Lavenham	1,750	1,750	1,760	1,750	1,780
Lawshall	930	920	950	960	940
Layham	580	560	550	550	560
Leavenheath	1,370	1,370	1,350	1,380	1,380
Lindsey	190	180	200	190	190
Little Cornard	300	310	310	300	300
Little Waldingfield	350	350	350	350	360
Long Melford	3,440	3,460	3,480	3,470	3,500
Milden	100	100	100	100	90
Monks Eleigh	430	430	450	440	440
Nayland-with-Wissington	1,160	1,160	1,140	1,130	1,120
Nedging-with-Naughton	390	380	390	400	400
Newton	500	500	500	510	500
Pinewood	4,050	4,340	4,430	4,460	4,500
Polstead	800	810	820	820	820
Preston St. Mary	220	220	210	220	230
Raydon	490	490	490	490	490
Semer	160	160	150	150	150
Shelley	70	70	70	60	60
Shimpling	390	380	400	410	420
Shotley	2,370	2,360	2,360	2,390	2,380
Somerton	80	80	80	80	80
Sproughton	1,280	1,250	1,310	1,370	1,390
Stanstead	320	320	320	320	310
Stoke-by-Nayland	700	700	710	700	720
Stratford St. Mary	700	700	720	720	740
Stutton	790	780	770	820	820
Sudbury	11,940	11,900	12,120	12,090	12,080
Tattingstone	470	510	510	520	530
Thorpe Morieux	260	260	260	260	260
Wattisham	100	100	100	100	110
Wenham Magna	160	150	150	150	150
Wenham Parva	30	20	20	20	20
Whatfield	320	310	300	320	310
Wherstead	350	350	360	350	350
Woolverstone	240	240	240	240	240

Parishes and towns in Forest Heath

Parish	Mid 2001	Mid 2002	Mid 2003	Mid 2004	Mid 2005
Barton Mills	860	850	840	830	800
Beck Row, Holywell Row and Kenny Hill	4,050	4,130	4,150	4,140	4,180
Brandon	8,290	8,220	8,340	8,320	8,380
Cavenham	130	120	120	120	120
Dalham	200	190	200	210	210
Elveden	250	260	270	260	270
Eriswell	4,980	4,960	5,230	5,200	4,920
Exning	1,950	1,940	1,950	1,920	1,960
Freckenham	370	370	370	360	360
Gazeley	690	700	710	700	740
Herringswell	200	190	200	180	190
Higham	150	140	140	150	140
Icklingham	420	420	420	420	420
Kentford	410	410	420	420	420
Lakenheath	4,500	4,490	4,560	4,640	4,490
Mildenhall	9,930	9,900	9,930	9,900	10,120
Moulton	1,020	1,020	1,030	1,040	1,090
Newmarket	15,010	14,760	14,710	14,800	15,320
Red Lodge	1,600	1,600	1,610	1,600	1,640
Santon Downham	240	240	240	240	240
Tuddenham	420	420	430	420	450
Wangford	10	10	10	10	20
Worlington	480	460	450	470	460

Ipswich Borough

	Mid 2001	Mid 2002	Mid 2003	Mid 2004	Mid 2005
Ipswich	117,160	117,030	117,650	117,640	118,400

Parishes and towns in Mid Suffolk

Parish	Mid 2001	Mid 2002	Mid 2003	Mid 2004	Mid 2005
Akenham	50	50	60	60	60
Ashbocking	320	320	320	320	340
Ashfield cum Thorpe	190	190	180	180	200
Aspall	50	50	60	60	60
Athelington	20	20	30	20	30
Bacton	1,230	1,230	1,200	1,190	1,180
Badley	80	80	80	90	90
Badwell Ash	680	690	700	710	740
Barham	1,380	1,370	1,350	1,420	1,460
Barking	440	440	430	420	430
Battisford	480	480	470	460	460
Baylham	250	250	260	270	270
Bedfield	300	300	300	300	320
Bedingfield	220	220	220	220	230
Beyton	660	660	690	670	680
Botesdale	640	640	650	660	670
Braiseworth	60	60	60	60	70
Bramford	2,390	2,390	2,400	2,390	2,410
Brome and Oakley	430	430	430	430	430
Brundish	190	190	190	190	180
Burgate	160	160	160	160	150
Buxhall	430	430	430	430	440
Claydon	1,950	1,970	2,000	2,120	2,190
Coddenham	520	520	550	560	570
Combs	970	970	1,030	1,040	1,020
Cotton	490	500	510	510	510
Creeting St. Mary	670	680	680	680	710
Creeting St. Peter or West Creeting	240	250	240	250	260
Crowfield	330	330	360	350	350
Debenham	1,880	1,880	1,880	1,970	2,040
Denham	180	180	180	180	180
Drinkstone	500	510	520	550	560
Elmswell	3,360	3,330	3,390	3,440	3,390
Eye	2,030	2,040	2,100	2,130	2,180
Felsham	420	420	410	420	420
Finningham	410	400	410	430	430
Flowton	100	100	100	110	120
Framsden	300	300	310	310	330
Fressingfield	980	970	960	1,000	1,020
Gedding	120	120	120	130	130
Gipping	70	80	70	70	80
Gislingham	880	890	890	910	950
Gosbeck	220	220	210	220	220
Great Ashfield	320	320	320	310	320

Parishes and towns in Mid Suffolk (cont.)

Parish	Mid 2001	Mid 2002	Mid 2003	Mid 2004	Mid 2005
Great Blakenham	1,080	1,100	1,090	1,080	1,100
Great Bricett	1,200	1,280	1,250	1,230	1,250
Great Finborough	760	760	770	790	800
Harleston	150	150	140	150	160
Haughley	1,730	1,720	1,720	1,740	1,750
Helmingham	150	160	160	160	170
Hemingstone	210	210	200	210	210
Henley	550	550	540	560	580
Hessett	490	490	470	480	490
Hinderclay	340	330	320	330	340
Horham	300	300	310	310	320
Hoxne	820	820	810	820	820
Hunston	150	150	150	160	160
Kenton	160	160	160	170	170
Langham	80	90	80	90	90
Laxfield	870	870	900	910	910
Little Blakenham	280	280	280	300	310
Little Finborough	50	50	50	40	40
Mellis	420	420	410	450	460
Mendham	440	440	440	440	440
Mendlesham	1,330	1,330	1,340	1,340	1,380
Metfield	340	340	340	320	330
Stowlangtoft	190	180	190	200	200
Monk Soham	160	160	160	170	170
Needham Market	4,510	4,510	4,540	4,490	4,560
Nettlestead	100	100	100	90	90
Norton	790	780	820	840	860
Occold	490	490	470	500	500
Offton	350	350	360	360	370
Old Newton with Dagworth	1,000	990	1,020	1,020	1,050
Onehouse	950	950	920	910	930
Palgrave	780	770	760	780	780
Pettaugh	200	210	200	210	220
Rattlesden	810	820	840	880	900
Redgrave	550	550	570	540	540
Redlingfield	110	110	110	110	110
Rickinghall Inferior	380	380	360	360	380
Rickinghall Superior	800	790	780	790	830
Ringshall	620	590	540	640	650
Rishangles	80	80	80	80	80
Shelland	40	40	40	40	50
Somersham	710	710	720	700	710
Southolt	70	70	70	70	70
Stoke Ash	210	220	220	230	240
Stonham Aspal	540	540	540	570	590

Parishes and towns in Mid Suffolk (cont.)

Parish	Mid 2001	Mid 2002	Mid 2003	Mid 2004	Mid 2005
Stonham Earl	640	640	660	650	650
Stonham Parva	320	320	330	340	350
Stowlangtoft	250	240	260	270	270
Stowmarket	14,880	14,880	15,120	15,480	15,740
Stowupland	1,970	1,970	1,960	1,940	1,970
Stradbroke	1,220	1,220	1,250	1,280	1,330
Stuston	170	170	170	180	190
Syleham	180	180	190	190	190
Tannington	110	110	110	110	110
Thorndon	570	570	580	570	590
Thornham Magna	120	110	100	90	90
Thornham Parva	50	50	50	50	50
Thrandeston	130	130	140	130	130
Thurston	3,170	3,160	3,170	3,210	3,260
Thwaite	130	140	140	140	160
Tostock	410	410	420	440	460
Walsham-le-Willows	1,120	1,110	1,130	1,160	1,170
Wattisfield	440	440	460	440	440
Westhorpe	210	210	220	220	210
Wetherden	560	560	540	520	540
Wetheringsett-cum-Brockford	630	630	620	650	670
Weybread	390	390	400	410	420
Whitton	90	100	90	100	90
Wickham Skeith	300	300	310	320	320
Wilby	230	230	240	240	240
Willisham	270	270	260	270	270
Wingfield	320	320	330	330	330
Winston	150	150	160	160	160
Woolpit	1,970	1,970	1,980	1,990	1,990
Worlingworth	670	670	710	740	750
Wortham	640	640	640	670	700
Wyverstone	380	380	380	380	370
Yaxley	430	440	460	510	530

Parishes and towns in St Edmundsbury

Parish	Mid 2001	Mid 2002	Mid 2003	Mid 2004	Mid 2005
Ampton	60	60	80	70	70
Bardwell	690	700	700	680	720
Barnardiston	210	210	210	210	210
Barnham	570	560	530	620	650
Barningham	930	930	950	940	930
Barrow	1,440	1,450	1,490	1,530	1,540
Bradfield Combust with Stanningfield	500	510	530	530	540
Bradfield St. Clare	140	140	150	160	160
Bradfield St. George	390	380	370	360	360
Brockley	280	290	290	290	300
Bury St Edmunds	35,050	35,090	35,280	35,940	36,640
Cavendish	920	920	940	960	980
Chedburgh	650	650	650	640	650
Chevington	600	600	630	630	630
Clare	1,980	1,980	1,990	1,990	2,060
Coney Weston	380	380	380	390	400
Cowlinge	280	280	280	380	380
Culford	620	620	630	620	640
Denham	170	180	170	180	170
Denston	130	130	120	120	120
Depden	200	190	200	190	200
Euston	140	140	130	140	130
Fakenham Magna	150	150	150	150	160
Flempton	160	160	160	150	180
Fornham All Saints	1,140	1,140	1,140	1,140	1,140
Fornham St. Genevieve	100	100	100	100	110
Fornham St. Martin	1,260	1,270	1,310	1,320	1,300
Great Barton	2,080	2,100	2,120	2,060	2,030
Great Bradley	340	340	340	350	350
Great Livermere	220	220	230	230	230
Great Thurlow	950	950	950	960	980
Great Whelnetham	830	830	840	810	820
Great Wratting	220	220	190	200	210
Hargrave	270	270	270	290	280
Haverhill	22,080	22,240	22,510	22,700	22,720
Hawkedon	120	120	120	120	120
Hawstead	330	330	340	340	340
Hengrave	140	140	150	150	140
Hepworth	510	510	520	520	550
Honington	1,250	1,200	1,120	1,300	1,340
Hopton	600	610	620	640	650
Horringer	900	900	900	900	890
Hundon	1,060	1,050	1,080	1,060	1,070
Ickworth	30	30	40	30	30

Parishes and towns in St Edmundsbury (cont.)

Parish	Mid 2001	Mid 2002	Mid 2003	Mid 2004	Mid 2005
Ingham	420	420	430	440	430
Ixworth	2,180	2,160	2,170	2,180	2,240
Ixworth Thorpe	60	60	50	60	60
Kedington	1,820	1,810	1,770	1,740	1,780
Knettishall	30	30	40	40	40
Lackford	260	260	260	270	270
Lidgate	190	190	190	200	220
Little Bradley	60	60	50	60	60
Little Livermere	40	40	40	30	40
Little Thurlow	230	230	220	230	230
Little Whelnetham	180	180	190	190	180
Little Wratting	150	140	150	150	160
Market Weston	220	220	240	250	260
Nowton	130	130	130	130	140
Ousden	230	240	250	250	260
Pakenham	820	820	820	840	840
Poslingford	180	180	170	180	180
Rede	160	160	160	160	160
Risby	830	830	860	840	820
Rushbrooke with Rougham	1,160	1,160	1,160	1,150	1,140
Sapiston	160	160	150	150	150
Stansfield	220	220	220	230	230
Stanton	2,680	2,680	2,710	2,720	2,680
Stoke-by-Clare	460	460	460	480	490
Stradishall	440	450	430	480	490
The Saxhams	280	280	290	290	300
Thelnetham	250	250	260	240	230
Timworth	70	70	70	60	50
Troston	850	840	860	870	860
West Stow	180	180	170	170	180
Westley	190	190	190	180	180
Whepstead	430	420	430	430	430
Wickhambrook	1,100	1,100	1,110	1,160	1,170
Withersfield	440	430	410	410	430
Wixoe	140	140	140	140	140
Wordwell	20	20	20	20	20

Parishes and towns in Suffolk Coastal

Parish	Mid 2001	Mid 2002	Mid 2003	Mid 2004	Mid 2005
Aldeburgh	2,800	2,800	2,850	2,750	2,690
Alderton	420	430	420	430	430
Aldringham cum Thorpe	750	770	770	760	730
Badingham	480	480	460	470	480
Bawdsey	320	320	330	320	320
Benhall	540	550	560	550	560
Blaxhall	230	230	230	230	220
Blythburgh	310	320	330	330	330
Boulge	30	30	30	40	40
Boyton	150	160	170	170	170
Bramfield	370	360	370	380	380
Brandeston	280	270	260	260	260
Bredfield	310	310	310	300	330
Brightwell	60	60	60	60	60
Bromeswell	330	330	320	340	340
Bruisyard	170	170	170	160	160
Bucklesham	540	540	540	540	550
Burgh	190	200	200	200	200
Butley	200	210	210	200	200
Campsey Ash	340	330	330	310	300
Capel St. Andrew	80	70	70	70	70
Charsfield	360	350	360	350	370
Chediston	200	200	200	210	210
Chillesford	130	120	120	120	120
Clopton	340	340	350	350	360
Cookley	100	90	90	80	80
Cransford	150	150	160	160	160
Cratfield	300	290	300	290	280
Cretingham	190	200	200	190	190
Culpho	40	40	40	40	40
Dallinghoo	170	160	160	170	180
Darsham	290	290	290	290	290
Debach	80	80	80	80	80
Dennington	550	550	570	590	580
Dunwich	80	70	80	80	70
Earl Soham	430	420	430	400	380
Easton	320	320	310	310	330
Eyke	370	360	370	380	370
Falkenham	180	180	180	170	180
Farnham	110	110	120	110	100
Felixstowe	24,050	24,090	24,050	23,950	24,000
Foxhall ♦ boundary change on 1 April 2004	150	140	150	♦260	270
Framlingham	3,120	3,110	3,200	3,280	3,340
Friston	340	340	350	360	360
Gedgrave	30	30	30	30	30

Parishes and towns in Suffolk Coastal (cont.)

Parish	Mid 2001	Mid 2002	Mid 2003	Mid 2004	Mid 2005
Great Bealings	290	280	280	290	310
Great Glemham	190	200	200	200	200
Grundisburgh	1,470	1,470	1,530	1,510	1,530
Hacheston	330	330	340	350	370
Hasketon	410	400	400	420	440
Hemley	70	60	60	60	60
Heveningham	110	110	110	110	120
Hollesley	1,360	1,370	1,400	1,400	1,400
Hoo	90	90	80	90	90
Huntingfield	190	190	190	190	190
Iken	120	120	120	120	120
Kelsale cum Carlton	980	980	980	1,000	1,030
Kesgrave	9,060	9,380	9,830	10,350	11,020
Kettleburgh	210	210	220	230	230
Kirton	1,090	1,080	1,080	1,060	1,050
Knodishall	890	880	880	870	860
Leiston	5,360	5,330	5,370	5,390	5,430
Letheringham	70	70	70	70	70
Levington	250	250	260	260	270
Linstead Magna	60	50	50	50	60
Linstead Parva	80	90	80	90	90
Little Bealings	440	440	440	460	470
Little Glemham	170	180	180	190	170
Marlesford	220	210	210	210	220
Martlesham	5,500	5,480	5,490	5,540	5,670
Melton	3,730	3,780	3,810	3,870	3,910
Middleton	360	360	360	360	370
Monewden	100	110	110	120	130
Nacton	680	690	680	700	720
Newbourne	270	280	270	280	280
Orford	660	660	670	660	630
Otley	670	690	700	710	730
Parham	300	300	300	290	300
Peasenhall	500	480	490	480	500
Pettistree	200	210	200	200	200
Playford	200	210	210	220	220
Purdis Farm ♦ boundary change on 1 April 2004	1,740	1,790	1,890	♦1,940	2,000
Ramsholt	30	30	30	30	30
Rendham	260	260	260	260	260
Rendlesham	1,650	1,730	1,770	2,080	2,200
Rushmere St. Andrew	6,070	6,090	6,240	6,230	6,440
Saxmundham	2,730	2,920	3,140	3,360	3,420
Saxtead	340	360	360	350	390
Shottisham	180	190	190	200	200
Sibton	210	200	200	200	190

Parishes and towns in Suffolk Coastal (cont.)

Parish	Mid 2001	Mid 2002	Mid 2003	Mid 2004	Mid 2005
Snape	620	630	640	640	630
Sternfield	130	130	120	120	130
Stratford St. Andrew	170	180	180	180	170
Stratton Hall	30	20	30	20	30
Sudbourne	310	320	330	320	330
Sutton	1,140	640	440	450	550
Sweffling	200	200	200	200	200
Swilland	160	160	160	170	170
Theberton	300	310	300	310	310
Thorington	80	80	70	70	70
Trimley St. Martin	1,940	1,940	1,940	1,960	1,950
Trimley St. Mary	3,670	3,690	3,700	3,670	3,700
Tuddenham St. Martin	340	320	320	330	320
Tunstall	510	500	510	510	490
Ubbeston	100	100	100	100	100
Ufford	810	810	850	840	860
Walberswick	420	420	420	400	390
Waldringfield	460	470	470	460	480
Walpole	210	220	210	220	220
Wantisden	30	30	30	30	30
Wenhaston with Mells Hamlet	820	830	860	860	870
Westerfield	410	410	420	420	440
Westleton	430	440	460	460	450
Wickham Market	2,200	2,160	2,160	2,140	2,140
Witnesham	830	820	830	800	810
Woodbridge	7,370	7,260	7,340	7,320	7,320
Yoxford	690	700	700	690	700

Parishes and towns in Waveney

Parish	Mid 2001	Mid 2002	Mid 2003	Mid 2004	Mid 2005
All Saints and St. Nicholas, South Elmham	130	140	130	140	130
Barnby	490	490	500	510	510
Barsham	220	220	210	210	210
Beccles	9,760	9,730	9,800	9,810	9,850
Benacre	60	60	70	80	80
Blundeston	1,560	1,560	1,560	1,560	1,590
Blyford	110	110	110	120	120
Brampton with Stoven	450	450	450	460	460
Bungay	4,910	4,880	4,970	5,030	5,050
Carlton Colville	6,650	6,880	7,180	7,590	7,690
Corton	1,150	1,170	1,170	1,160	1,170
Covehithe	30	30	30	30	30
Ellough	40	40	40	40	40
Flixton (Lothingland Ward)	50	50	40	40	40
Flixton (The Saints Ward)	180	170	160	180	180
Frostenden	200	180	180	180	190
Gisleham	550	560	650	670	690
Halesworth	4,650	4,730	4,850	4,930	4,930
Henstead with Hulver Street	350	320	340	320	320
Holton	820	790	810	830	830
Kessingland	4,220	4,210	4,260	4,230	4,200
Lound	360	360	360	380	370
Lowestoft	57,770	58,200	58,000	57,970	58,300
Mettingham	200	200	200	190	200
Mutford	500	500	500	500	500
North Cove	460	460	460	450	450
Oulton	3,230	3,520	3,700	3,950	4,050
Redisham	110	110	120	120	110
Reydon	2,570	2,530	2,530	2,570	2,580
Ringsfield	350	340	340	340	340
Rumburgh	310	310	320	330	330
Rushmere	80	80	80	80	80
Shadingfield	160	170	160	170	170
Shipmeadow	160	160	160	160	160
Somerleyton, Ashby and Herringfleet	450	450	460	430	420
Sotherton	70	70	80	80	80
Sotterley	120	130	130	120	120
South Cove	20	20	20	20	20
Southwold	1,460	1,410	1,380	1,380	1,380
Spexhall	210	200	210	220	210
St. Andrew, Ilketshall	280	280	280	290	290
St. Cross, South Elmham	120	120	120	120	120
St. James, South Elmham	200	210	210	210	210
St. John, Ilketshall	40	40	40	40	40






Parishes and towns in Waveney (cont.)

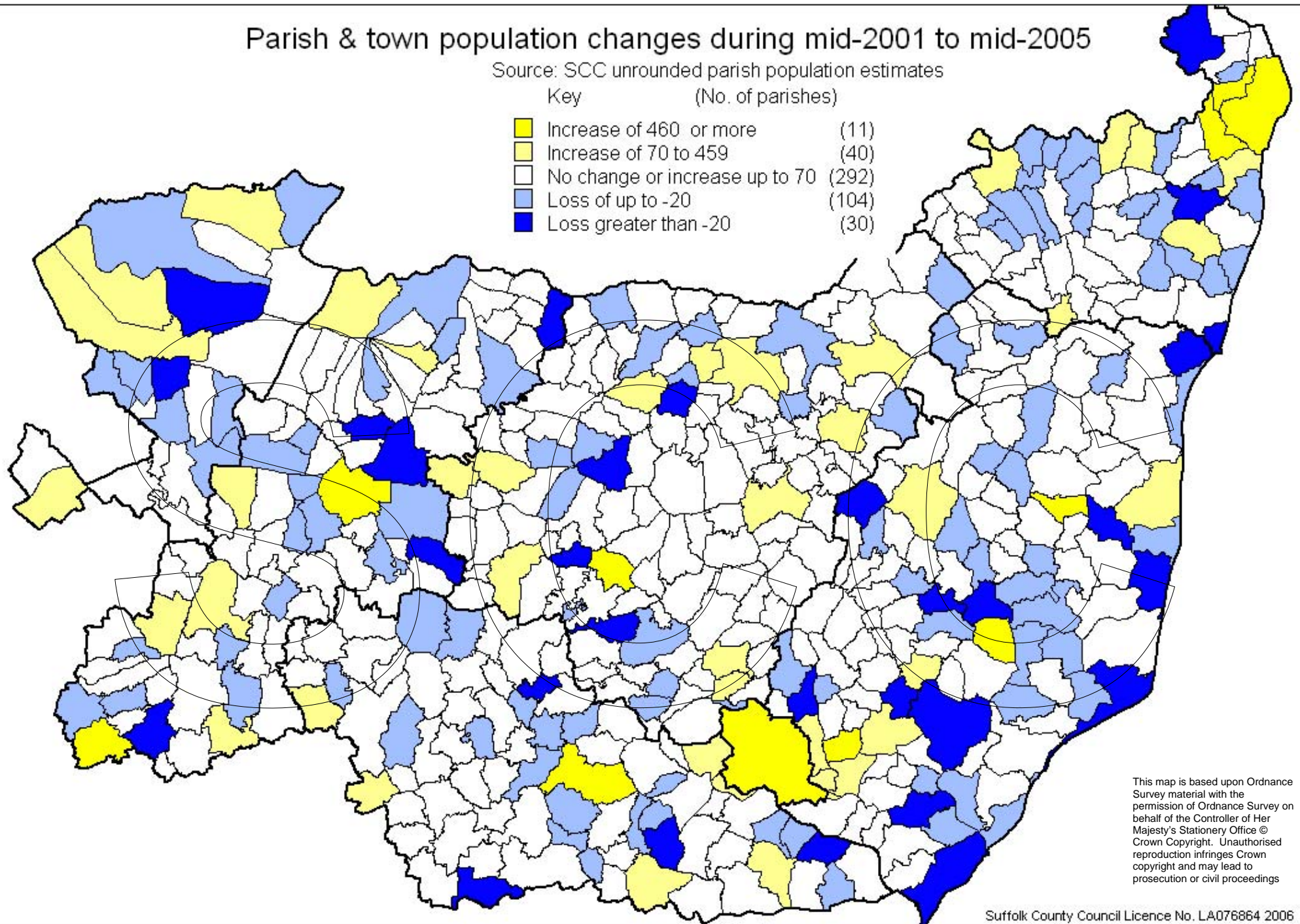
Parish	Mid 2001	Mid 2002	Mid 2003	Mid 2004	Mid 2005
St. Lawrence, Ilketshall	180	180	180	180	170
St. Margaret, Ilketshall	150	140	150	140	140
St. Margaret, South Elmham	100	100	100	100	100
St. Mary, South Elmham otherwise Homersfield	160	170	170	170	180
St. Michael, South Elmham	60	60	60	60	60
St. Peter, South Elmham	40	40	40	40	40
Uggeshall	170	170	170	170	170
Wangford with Henham	620	630	630	630	640
Westhall	380	380	400	400	390
Weston	220	220	220	230	230
Willingham St. Mary	160	150	160	160	150
Wissett	250	250	260	260	260
Worlingham	3,320	3,430	3,590	3,680	3,730
Wrentham	880	890	920	940	960

Parish & town population changes during mid-2001 to mid-2005

Source: SCC unrounded parish population estimates

Key (No. of parishes)

	Increase of 460 or more	(11)
	Increase of 70 to 459	(40)
	No change or increase up to 70	(292)
	Loss of up to -20	(104)
	Loss greater than -20	(30)



This map is based upon Ordnance Survey material with the permission of Ordnance Survey on behalf of the Controller of Her Majesty's Stationery Office © Crown Copyright. Unauthorised reproduction infringes Crown copyright and may lead to prosecution or civil proceedings