

Source H



Photo 1



Photo 4

Credit: Sylvia Liber, Illawarra Mercury



Photo 2



Photo 5



Photo 3



Photo 6



Wollongong City Council, Emergency Management Australia and the Australian Government make no representations about the suitability of the information contained in this document or any material related to this document for any purpose. The document is provided 'as is' without warranty of any kind to the extent permitted by law. Wollongong City Council, Emergency Management Australia and the Australian Government hereby disclaim all warranties and conditions with regard to this information, including all implied warranties and conditions of merchantability, fitness for particular purpose, title and non-infringement. In no event shall Wollongong City Council, Emergency Management Australia or the Australian Government be liable for any special, indirect or consequential damages or any damages whatsoever resulting from the loss of use, data or profits, whether in an action of contract, negligence or other tortious action, arising out of or in connection with the use of information available in this document. The document or material related to this document could include technical inaccuracies or typographical errors.

Source A

Facts on Flash Floods in NSW

Flash floods occur when soil absorption, runoff or drainage cannot adequately disperse intense rainfall. The most frequent cause of flash flooding is slow-moving thunderstorms. These systems can deposit extraordinary amounts of water over a small area in a very short time.

The strong updrafts of air within thunderstorms can suspend huge amounts of rain before releasing a deluge onto the ground. Such rain can reach intensities of more than 100mm per hour, provided the environment is humid enough

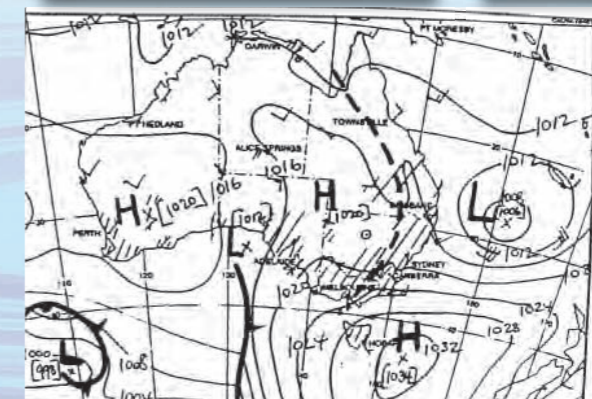
to feed sufficient moisture to the storm. Often topography acts to focus thunderstorm development over a particular location, further accentuating rainfall accumulation.

Summary of Significant Severe Thunderstorms Events

17 August 1998 - Heavy Rain and Flooding in Wollongong

A low pressure trough along the central and southern NSW coast provided favourable conditions for heavy rainfall during Monday 17 August 1998. The heaviest falls occurred during the period from about 6.00pm to 9.00pm when an area of thunderstorms embedded in the rain remained stationary over the Wollongong area.

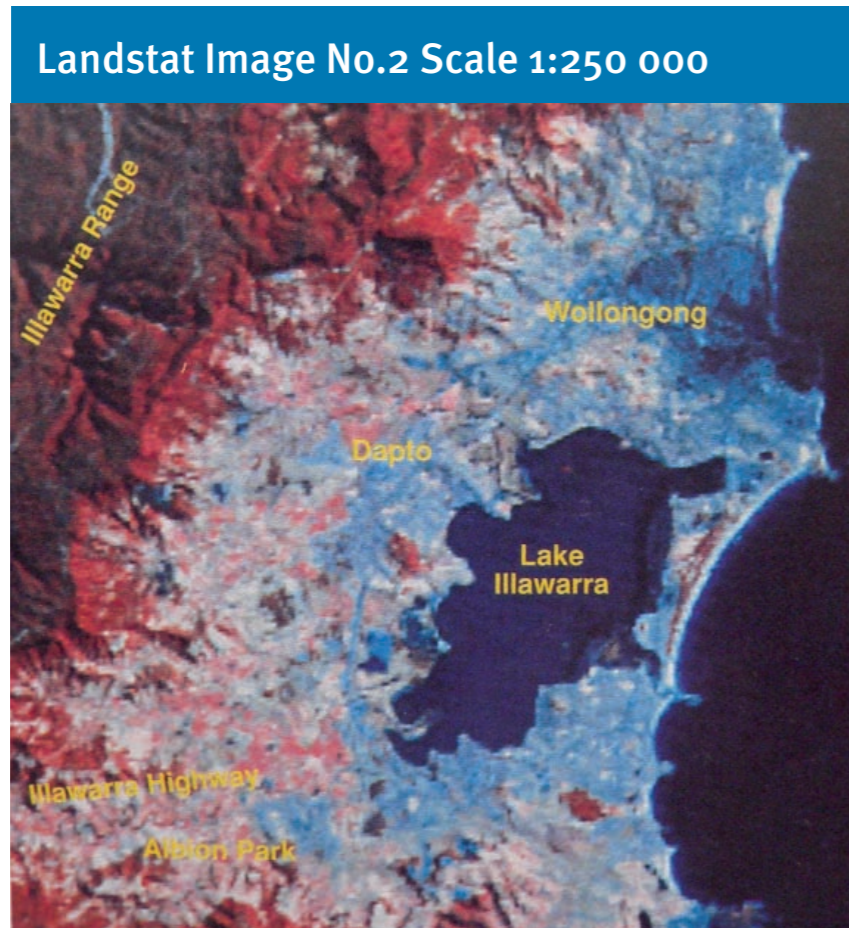
All major roads and train lines to Wollongong were cut last night due to the rain with mudslides reported on some roads including Bulli Pass. A person drowned when trying to drive across a flooded creek at Bellambi. In North Wollongong, 50 houses were flooded and some seaside houses were reported dislodged from their foundations.



Mean Sea Level Pressure (hPa) 17 August 1998

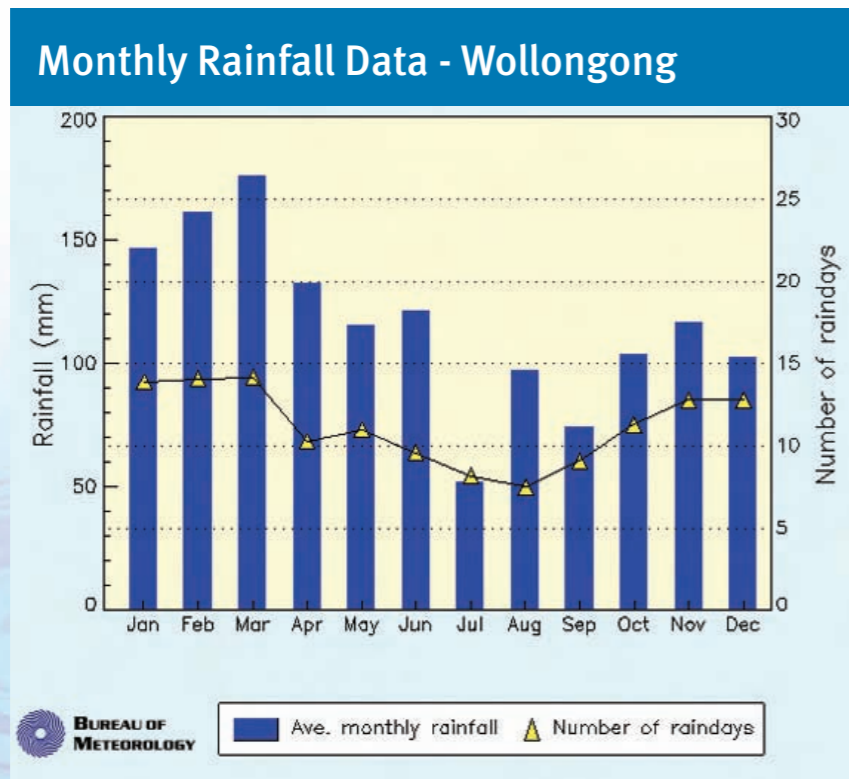
WCC Marketing P8134-286277.06

Source B

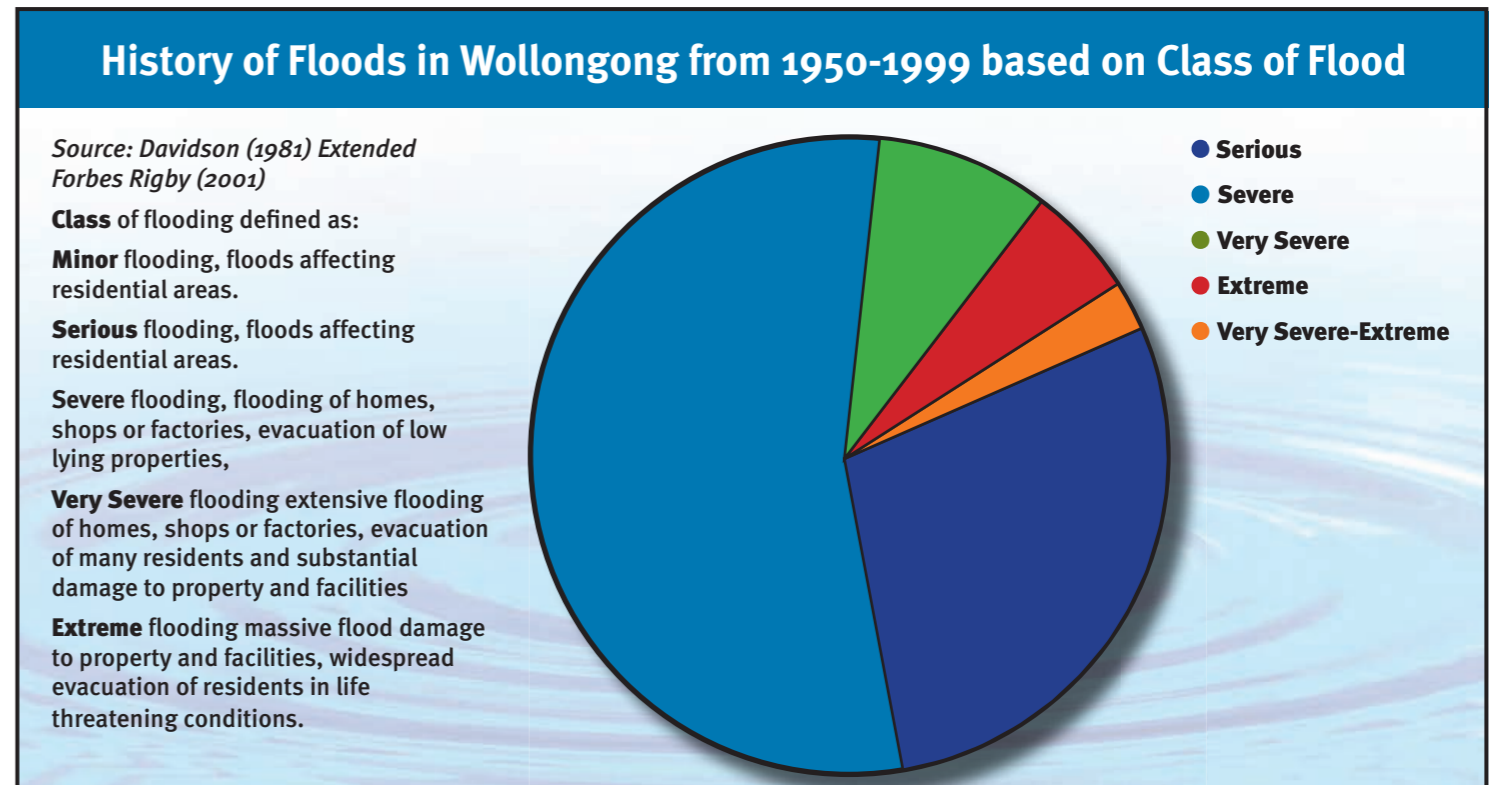


Bulli Pass 4:10mm

Source C



Source G



Source E



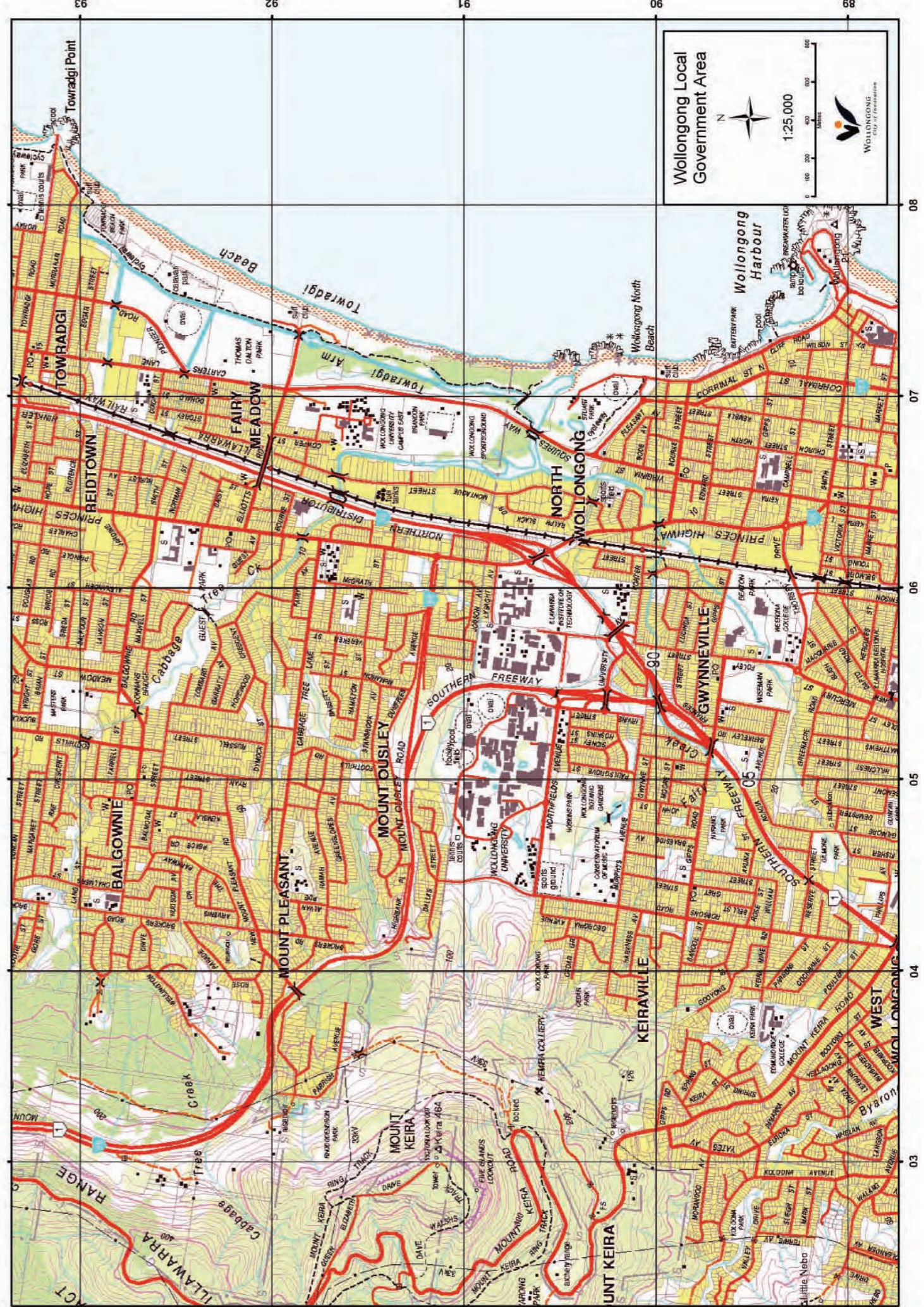
Wollongong Local Government Area

0 140 280 560 840 1,120
Metres

WOLLONGONG
City of Innovation

Aerial Photography 05.04.2001

- Built up area
- Route marker: National Highway, National Route, State Route
- Major road: paved, unpaved
- Secondary road: paved, unpaved
- Minor road: paved, unpaved
- Vehicular track: Stock grid, Floodway
- Four-wheel drive track: Gate
- Walking track
- Road tunnel, Culvert, Bridge
- Railway, heavy, Station, Tunnel
- Railway, light
- Silo □ yards X Landmark feature: Stockyards, Mine
- Water tank, Ground tank or dam
- Survey landmark (with height)
- Spot height
- Intermittent stream, with waterfall
- Perennial stream
- Large dam or water
- Contours, Depression contours
- Cliff, with relative height, Rocky pinnacle
- Quarry or gravel pit, Levee or dyke
- Ambulance station, Police station, Emergency
- Fire station, School, Post office



Wollongong Local Government Area

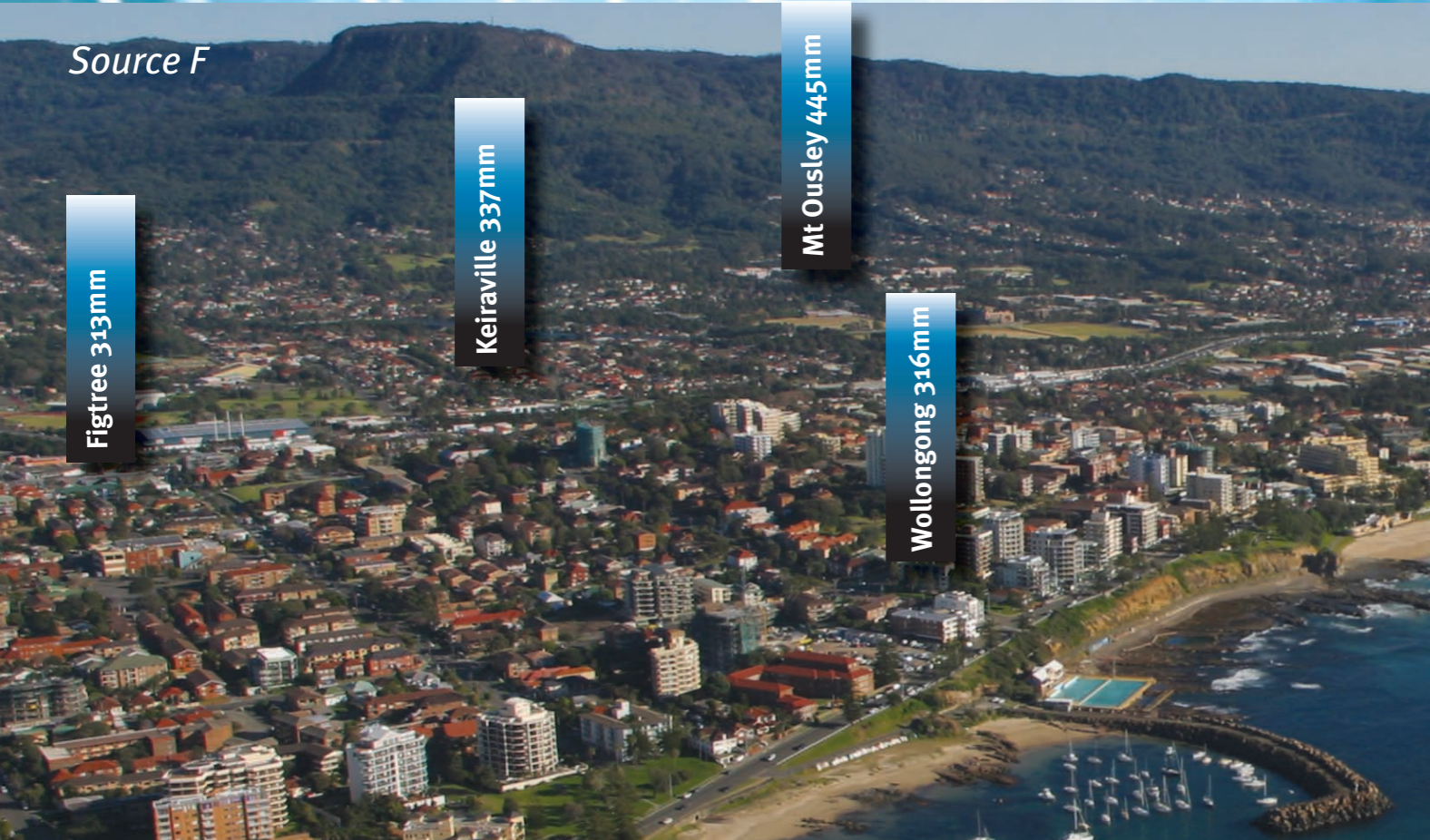
0 100 200 400 800
Metres

WOLLONGONG
City of Innovation

1:25,000

Illawarra Escarpment

Source F



Source G

