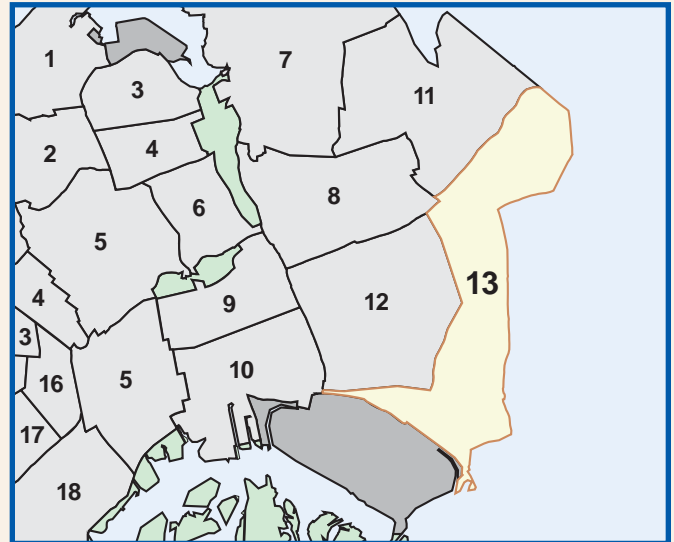


QUEENS COMMUNITY DISTRICT 13

TOTAL POPULATION	1980	1990	2000
Number	173,176	177,535	196,284
% Change	—	2.5	10.6



VITAL STATISTICS	2000	2004
Births: Number	1,879	1,815
Rate per 1000	9.6	9.2
Deaths: Number	1,051	898
Rate per 1000	5.4	4.6
Infant Mortality: Number	17	18
Rate per 1000	9.0	9.9

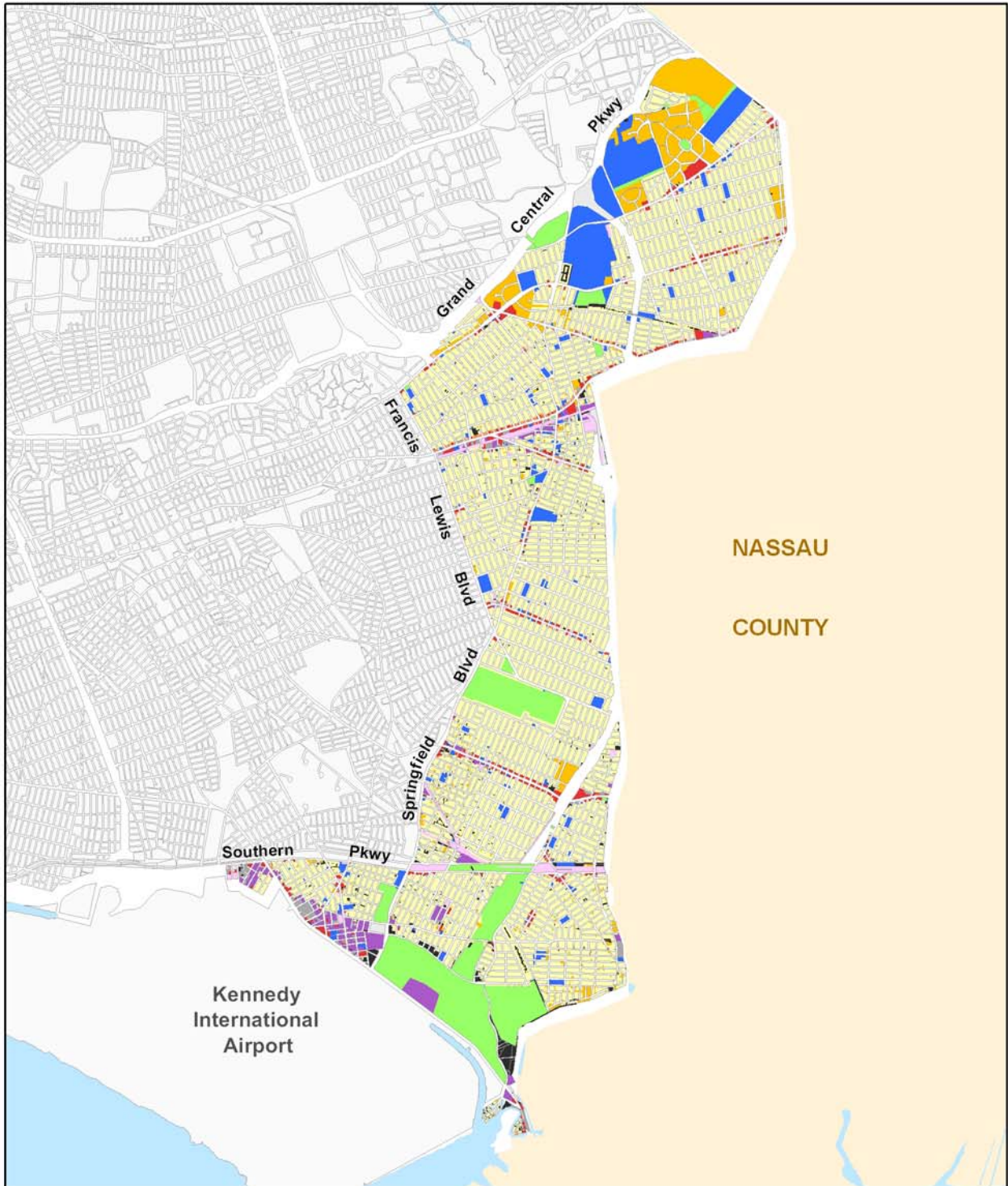


INCOME SUPPORT	2000	2006
Public Assistance (AFDC, Home Relief)	4,332	3,531
Supplemental Security Income	4,850	4,288
Medicaid Only	8,173	31,053
Total Persons Assisted	17,355	38,872
Percent of Population	8.8	19.8

	Lots	Lot Area	
		Sq. Ft.(000)	%
1- 2 Family Residential	39,575	146,788.5	62.1
Multi-Family Residential	669	17,118.8	7.2
Mixed Resid. / Commercial	585	1,484.7	0.6
Commercial / Office	518	5,371.5	2.3
Industrial	186	5,279.8	2.2
Transportation / Utility	144	2,536.8	1.1
Institutions	244	19,846.9	8.4
Open Space / Recreation	40	30,633.3	13.0
Parking Facilities	301	2,366.6	1.0
Vacant Land	1,080	4,628.6	2.0
Miscellaneous	34	423.5	0.2
Total	43,376	236,479.0	100.0

TOTAL LAND AREA	
Acres:	8,231.1
Square Miles:	12.9

Queens Community District 13



© Copyright 2007
 NYC Department of City Planning
 Source: MapPLUTO™ Release 06C

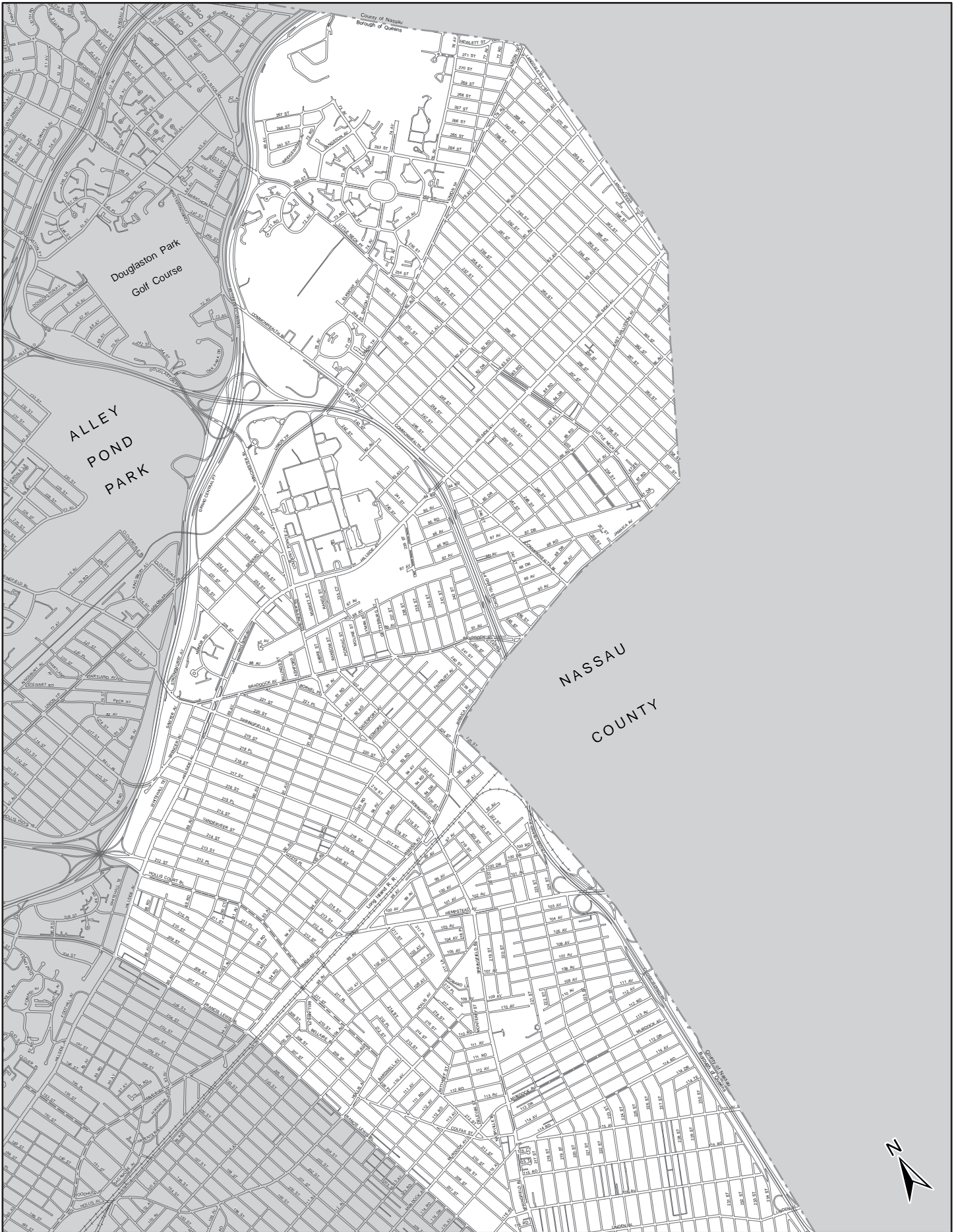
Residential Land Uses

- One & Two Family Buildings
- Multi-Family Buildings
- Mixed Residential and Commercial Buildings

Non-Residential Land Uses

- Commercial / Office Buildings
- Industrial / Manufacturing
- Open Space and Outdoor Recreation
- Public Facilities and Institutions
- Transportation and Utility
- Parking Facilities
- Vacant Land
- All Others or No Data

Queens Community District 13 (Part 1)



Queens Community District 13 (Part 2)



Copyright © 2006 New York City Department of City Planning. All Rights Reserved.
Base Map Copyrighted by the New York City Department of Information Technology and Telecommunications. All Rights Reserved.

0 1,350 2,700 5,400 Feet

**Table PL P-103: Total Population by Mutually Exclusive Race and Hispanic Origin
and Total Housing Units
New York City Community Districts, 1990 and 2000**

Queens Community District 13	1990		2000		Change 1990-2000	
	Number	Percent	Number	Percent	Number	Percent
Total Population	177,535	100.0	196,284	100.0	18,749	10.6
Nonhispanic of Single Race:	-	-	-	-	-	-
White Nonhispanic	61,175	34.5	36,145	18.4	(25,030)	-40.9
Black/African American Nonhispanic	86,910	49.0	108,244	55.1	21,334	24.5
Asian or Pacific Islander Nonhispanic	10,303	5.8	20,113	10.2	9,810	95.2
American Indian and Alaska Native Nonhispanic	499	0.3	604	0.3	105	21.0
Some Other Race Nonhispanic	412	0.2	2,674	1.4	2,262	549.0
Nonhispanic of Two or More Races	-	-	8,031	4.1	-	-
Hispanic Origin	18,236	10.3	20,473	10.4	2,237	12.3
Population Under 18 Years	40,653	100.0	49,463	100.0	8,810	21.7
Nonhispanic of Single Race:	-	-	-	-	-	-
White Nonhispanic	9,065	22.3	4,887	9.9	(4,178)	-46.1
Black/African American Nonhispanic	23,153	57.0	29,771	60.2	6,618	28.6
Asian or Pacific Islander Nonhispanic	3,116	7.7	5,690	11.5	2,574	82.6
American Indian and Alaska Native Nonhispanic	131	0.3	259	0.5	128	97.7
Some Other Race Nonhispanic	171	0.4	814	1.6	643	376.0
Nonhispanic of Two or More Races	-	-	2,161	4.4	-	-
Hispanic Origin	5,017	12.3	5,881	11.9	864	17.2
Population 18 Years and Over	136,882	100.0	146,821	100.0	9,939	7.3
Nonhispanic of Single Race:	-	-	-	-	-	-
White Nonhispanic	52,110	38.1	31,258	21.3	(20,852)	-40.0
Black/African American Nonhispanic	63,757	46.6	78,473	53.4	14,716	23.1
Asian or Pacific Islander Nonhispanic	7,187	5.3	14,423	9.8	7,236	100.7
American Indian and Alaska Native Nonhispanic	368	0.3	345	0.2	(23)	-6.3
Some Other Race Nonhispanic	241	0.2	1,860	1.3	1,619	671.8
Nonhispanic of Two or More Races	-	-	5,870	4.0	-	-
Hispanic Origin	13,219	9.7	14,592	9.9	1,373	10.4
Total Population	177,535	100.0	196,284	100.0	18,749	10.6
Under 18 Years	40,653	22.9	49,463	25.2	8,810	21.7
18 Years and Over	136,882	77.1	146,821	74.8	9,939	7.3
Total Housing Units	57,292	-	64,825	-	7,533	13.1

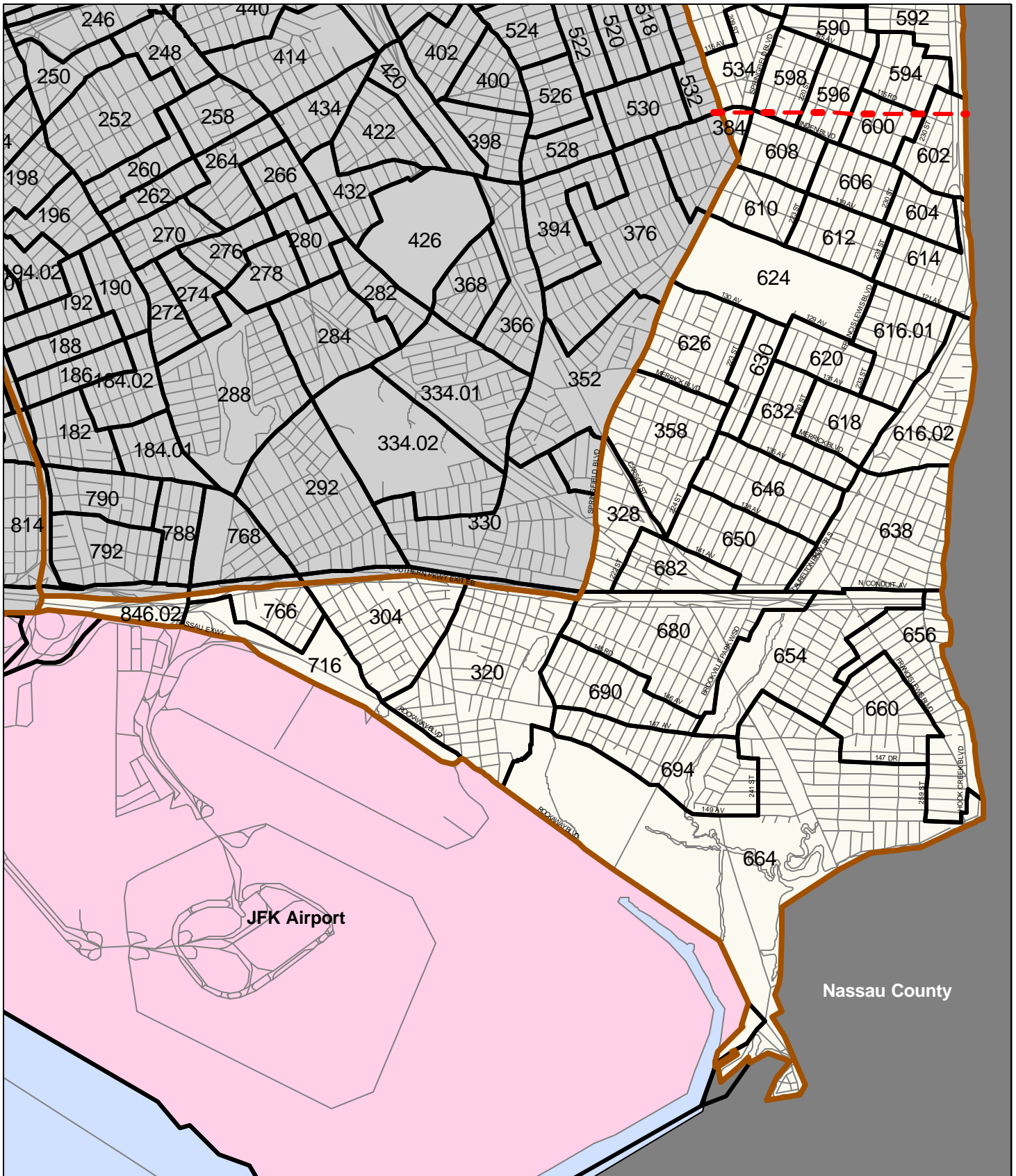
Race categories are from the 2000 Census and are not strictly comparable with categories used in 1990.

Source: U.S. Census Bureau, 2000 Census PL File and SF1 and 1990 Census STF1
Population Division - NYC Department of City Planning (Oct 2001)

**Demographic Profile - New York City Community Districts
2000 Census SF1**

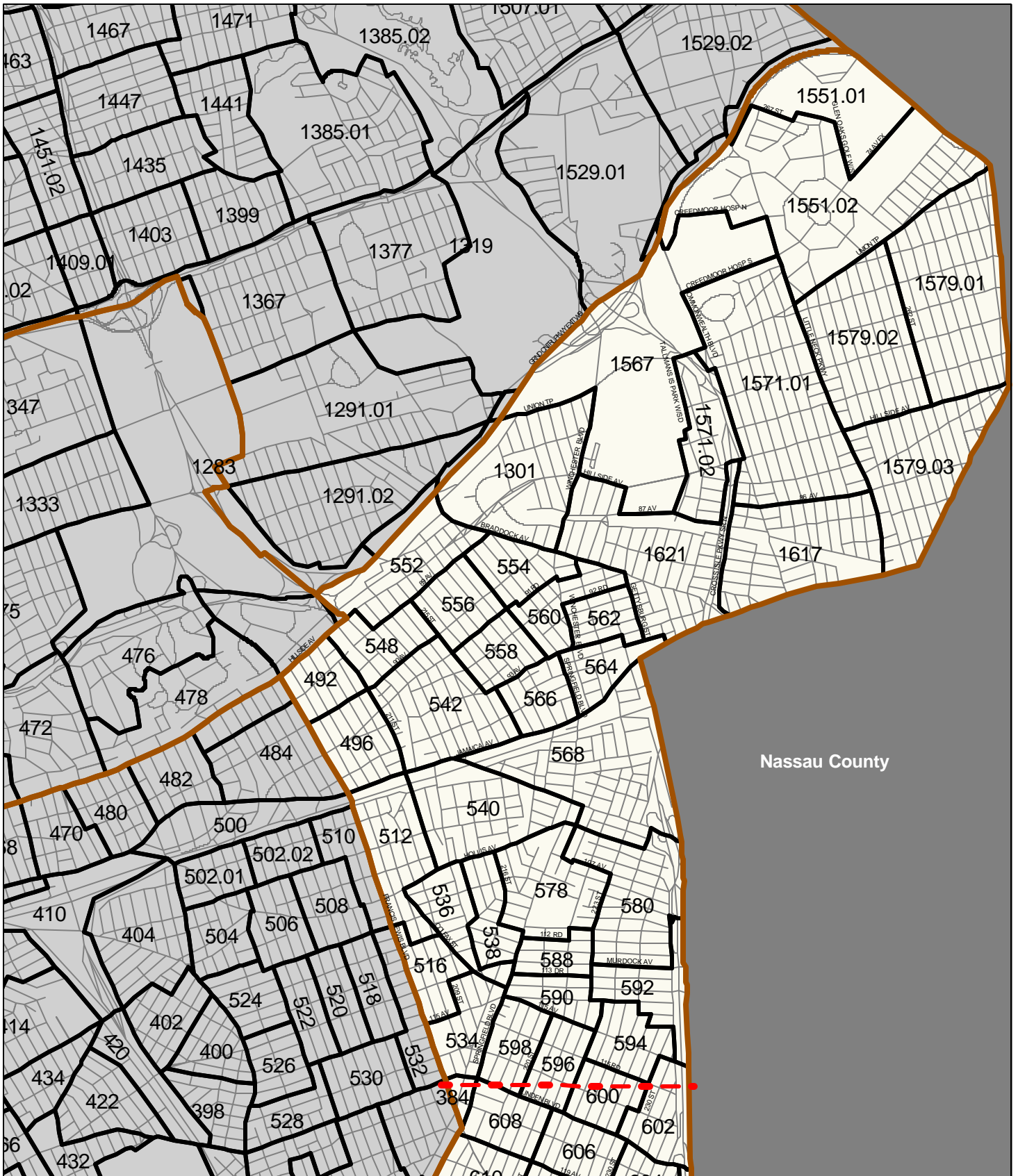
Queens Community District 13	Number	Percent
Total Population	196,284	100.0
White Nonhispanic	36,145	18.4
Black Nonhispanic	108,244	55.1
Asian and Pacific Islander Nonhispanic	20,113	10.2
Other Nonhispanic	3,278	1.7
Two or More Races Nonhispanic	8,031	4.1
Hispanic Origin	20,473	10.4
Female	105,644	53.8
Male	90,640	46.2
Under 5 years	12,395	6.3
5 to 9 years	14,359	7.3
10 to 14 years	14,463	7.4
15 to 19 years	13,178	6.7
20 to 24 years	12,530	6.4
25 to 44 years	58,741	29.9
45 to 64 years	46,759	23.8
65 years and over	23,859	12.2
18 years and over	146,821	74.8
In households	193,252	98.5
In family households	176,456	89.9
Householder	48,159	24.5
Spouse	32,079	16.3
Own child under 18 years	38,904	19.8
Other relatives	51,521	26.2
Nonrelatives	5,793	3.0
In nonfamily households	16,796	8.6
Householder	13,964	7.1
Householder 65 years and over living alone	4,913	2.5
Nonrelatives	2,832	1.4
In group quarters	3,032	1.5
Total Households	62,123	100.0
Family households	48,159	77.5
Married-couple family	32,079	51.6
With related children under 18 years	17,105	27.5
Female householder, no husband present	12,646	20.4
With related children under 18 years	7,322	11.8
Male householder, no wife present	3,434	5.5
With related children under 18 years	1,626	2.6
Nonfamily households	13,964	22.5
Households with one or more persons 65 years and over	17,947	28.9
Persons Per Family	3.54	-
Persons Per Household	3.11	-
Total Housing Units	64,825	-
Occupied Housing Units	62,123	100.0
Renter occupied	17,227	27.7
Owner occupied	44,896	72.3
By Household Size:		
1 person household	11,862	19.1
2 person household	15,342	24.7
3 person household	11,771	18.9
4 person household	10,892	17.5
5 persons and over	12,256	19.7
By Age of Householder:		
15 to 24 years	1,121	1.8
25 to 44 years	22,221	35.8
45 to 64 years	25,023	40.3
65 years and over	13,758	22.1

CENSUS 2000: QUEENS COMMUNITY DISTRICT 13 (SOUTH)

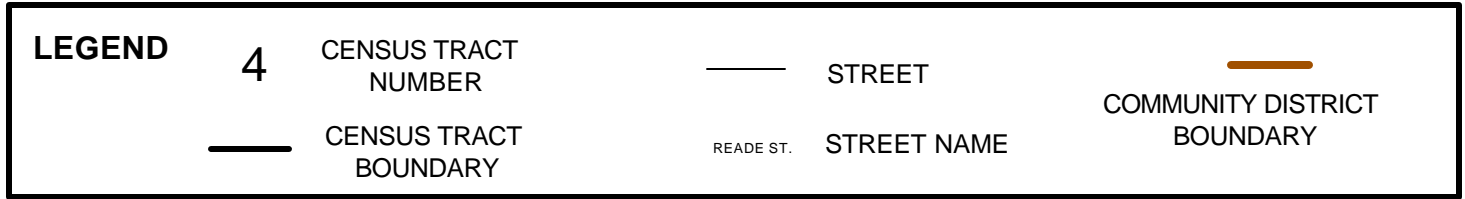


LEGEND	4	CENSUS TRACT NUMBER	—	STREET	—	COMMUNITY DISTRICT BOUNDARY
	—	CENSUS TRACT BOUNDARY	—	STREET NAME	—	

CENSUS 2000: QUEENS COMMUNITY DISTRICT 13 (NORTH)



Nassau County



Change in Total Population, 1990 to 2000
Queens Community District 13

Census Tract	Total Population		Population Change, 1990-2000	
	1990	2000	Number	Percent
0304 *	2,454	3,345	891	36.3
0320 *	3,286	4,585	1,299	39.5
0328 *	1,786	2,155	369	20.7
0358	3,650	3,923	273	7.5
0384 *	2,300	2,608	308	13.4
0492 *	4,881	5,194	313	6.4
0496	3,042	3,463	421	13.8
0512	2,590	2,885	295	11.4
0516	2,025	2,143	118	5.8
0534	1,839	1,868	29	1.6
0536	1,885	2,154	269	14.3
0538	1,685	1,952	267	15.8
0540	4,196	4,496	300	7.1
0542	4,765	5,709	944	19.8
0548	2,011	2,392	381	18.9
0552 *	3,050	3,497	447	14.7
0554	1,999	2,492	493	24.7
0556	1,970	2,254	284	14.4
0558	1,734	1,967	233	13.4
0560	1,321	1,826	505	38.2
0562	1,285	1,484	199	15.5
0564	1,418	1,839	421	29.7
0566	1,249	1,588	339	27.1
0568	4,376	5,356	980	22.4
0578	3,088	3,477	389	12.6
0580	3,823	4,145	322	8.4
0588	1,191	1,120	(71)	(6.0)
0590	1,168	1,241	73	6.3
0592	1,094	1,263	169	15.4
0594	1,714	1,780	66	3.9
0596	1,472	1,614	142	9.6
0598	1,809	1,830	21	1.2
0600	1,170	1,260	90	7.7
0602	1,171	1,212	41	3.5
0604	927	1,026	99	10.7
0606	1,476	1,521	45	3.0
0608	1,503	1,631	128	8.5
0610	1,090	1,216	126	11.6
0612	1,705	1,719	14	0.8
0614	1,218	1,436	218	17.9
061601	2,133	2,189	56	2.6
061602	1,262	1,545	283	22.4
0618	1,585	1,603	18	1.1

Change in Total Population, 1990 to 2000
Queens Community District 13

Census Tract	Total Population		Population Change, 1990-2000	
	1990	2000	Number	Percent
0620	1,493	1,567	74	5.0
0624	672	671	(1)	(0.1)
0626	2,525	2,668	143	5.7
0630	1,599	1,770	171	10.7
0632	2,254	2,407	153	6.8
0638	3,064	3,835	771	25.2
0646	2,960	3,134	174	5.9
0650	2,930	3,027	97	3.3
0654	2,469	2,699	230	9.3
0656	3,442	4,373	931	27.0
0660	2,532	3,214	682	26.9
0664	8,683	9,808	1,125	13.0
0680	3,810	4,310	500	13.1
0682	1,187	1,261	74	6.2
0690	2,604	3,285	681	26.2
0694	2,619	2,861	242	9.2
0716 *	0	28	28	-
0766 *	525	564	39	7.4
084602 *	812	1,109	297	36.6
1301 *	3,621	3,998	377	10.4
155101 *	3,684	2,212	(1,472)	(40.0)
155102 *	8,403	7,786	(617)	(7.3)
1567 *	1,904	1,204	(700)	(36.8)
157101	6,429	7,199	770	12.0
157102	1,374	1,523	149	10.8
157901	4,854	4,902	48	1.0
157902	3,272	3,685	413	12.6
157903	3,667	3,841	174	4.7
1617	4,000	4,359	359	9.0
1621	5,354	6,181	827	15.4

* Census tract is within two or more community districts. Data are for entire census tract.

**Total Population by Mutually Exclusive Race and Hispanic Origin
by Census Tract, 2000
Queens Community District 13**

Census Tract	Total Population	Nonhispanic by Race					Two or More Races	Hispanic Origin (of any race)
		Single Race						
		White	Black/ African American	Asian	Other			
0304 *	3,345	66	2,829	46	41	94	269	
0320 *	4,585	104	3,599	91	29	137	625	
0328 *	2,155	26	1,968	1	7	63	90	
0358	3,923	37	3,622	6	11	81	166	
0384 *	2,608	25	2,423	11	13	64	72	
0492 *	5,194	346	2,765	530	239	350	964	
0496	3,463	214	1,275	550	333	375	716	
0512	2,885	38	2,433	28	39	125	222	
0516	2,143	17	1,905	16	17	85	103	
0534	1,868	24	1,719	3	8	58	56	
0536	2,154	36	1,855	15	21	93	134	
0538	1,952	22	1,731	6	11	87	95	
0540	4,496	121	3,695	57	31	119	473	
0542	5,709	527	1,764	1,165	396	655	1,202	
0548	2,392	210	630	528	255	317	452	
0552 *	3,497	546	873	761	141	284	892	
0554	2,492	654	369	621	57	150	641	
0556	2,254	449	324	618	125	145	593	
0558	1,967	377	398	448	94	140	510	
0560	1,826	504	263	436	43	120	460	
0562	1,484	430	234	298	40	88	394	
0564	1,839	419	287	270	77	128	658	
0566	1,588	275	359	463	60	108	323	
0568	5,356	314	3,595	200	62	259	926	
0578	3,477	192	2,853	41	31	105	255	
0580	4,145	128	3,538	42	48	132	257	
0588	1,120	13	949	18	8	81	51	
0590	1,241	20	1,053	8	8	84	68	
0592	1,263	21	1,160	10	6	25	41	
0594	1,780	51	1,584	6	10	36	93	
0596	1,614	45	1,494	3	3	37	32	
0598	1,830	23	1,662	12	17	54	62	
0600	1,260	38	1,152	1	6	31	32	
0602	1,212	34	1,061	12	5	35	65	
0604	1,026	42	903	0	4	29	48	
0606	1,521	39	1,325	20	4	60	73	
0608	1,631	23	1,474	7	5	38	84	
0610	1,216	23	1,097	1	1	39	55	
0612	1,719	81	1,529	4	18	35	52	
0614	1,436	27	1,274	3	10	53	69	

**Total Population by Mutually Exclusive Race and Hispanic Origin
by Census Tract, 2000
Queens Community District 13**

Census Tract	Total Population	Nonhispanic by Race					Two or More Races	Hispanic Origin (of any race)
		Single Race						
		White	Black/ African American	Asian	Other			
061601	2,189	45	1,994	4	17	75	54	
061602	1,545	104	1,249	31	29	51	81	
0618	1,603	91	1,302	16	12	95	87	
0620	1,567	42	1,420	8	15	23	59	
0624	671	23	591	2	1	14	40	
0626	2,668	54	2,377	24	9	55	149	
0630	1,770	25	1,601	6	14	46	78	
0632	2,407	49	2,116	17	12	86	127	
0638	3,835	497	2,648	122	47	163	358	
0646	3,134	59	2,825	16	11	114	109	
0650	3,027	62	2,751	14	24	94	82	
0654	2,699	313	1,831	56	35	123	341	
0656	4,373	661	2,870	134	54	215	439	
0660	3,214	405	2,267	113	27	61	341	
0664	9,808	908	7,253	253	144	380	870	
0680	4,310	172	3,701	35	17	124	261	
0682	1,261	33	1,063	8	23	34	100	
0690	3,285	64	2,889	29	23	145	135	
0694	2,861	119	2,425	37	47	60	173	
0716 *	28	20	1	0	0	7	0	
0766 *	564	20	494	2	4	12	32	
084602 *	1,109	361	219	79	42	51	357	
1301 *	3,998	1,937	417	985	81	103	475	
155101 *	2,212	2,115	25	31	5	24	12	
155102 *	7,786	4,457	570	1,887	29	155	688	
1567 *	1,204	424	458	84	15	33	190	
157101	7,199	3,621	209	2,363	117	218	671	
157102	1,523	865	20	366	20	53	199	
157901	4,902	2,999	25	1,409	30	127	312	
157902	3,685	1,814	28	1,441	41	99	262	
157903	3,841	2,391	38	929	49	117	317	
1617	4,359	2,838	103	703	15	77	623	
1621	6,181	2,611	304	1,730	122	248	1,166	

* Census tract is within two or more community districts. Data are for entire census tract.

**Total Households by Household Family Type
by Census Tract, 2000
Queens Community District 13**

Census Tract	Total Households	Total Family Households	Total Non-Family Households	Average Household Size	Average Family Size
0304 *	996	806	190	3.34	3.65
0320 *	998	800	198	3.28	3.62
0328 *	702	534	168	3.07	3.51
0358	1,230	985	245	3.18	3.45
0384 *	829	632	197	3.13	3.53
0492 *	1,848	1,298	550	2.80	3.40
0496	920	815	105	3.75	3.92
0512	758	649	109	3.81	3.93
0516	631	507	124	3.40	3.72
0534	547	446	101	3.41	3.73
0536	634	515	119	3.40	3.69
0538	528	460	68	3.70	3.77
0540	1,215	1,017	198	3.68	3.90
0542	1,523	1,333	190	3.74	3.97
0548	665	556	109	3.60	3.95
0552 *	1,074	852	222	3.19	3.59
0554	831	646	185	3.00	3.45
0556	648	555	93	3.48	3.78
0558	539	470	69	3.65	3.90
0560	530	434	96	3.45	3.82
0562	426	361	65	3.48	3.78
0564	566	433	133	3.24	3.64
0566	449	374	75	3.54	3.92
0568	1,561	1,261	300	3.43	3.79
0578	970	806	164	3.45	3.72
0580	1,176	977	199	3.51	3.77
0588	365	293	72	3.07	3.37
0590	393	316	77	3.16	3.44
0592	406	335	71	3.11	3.39
0594	555	447	108	3.21	3.56
0596	516	419	97	3.10	3.39
0598	596	483	113	3.07	3.38
0600	412	334	78	3.06	3.40
0602	375	316	59	3.23	3.49
0604	336	273	63	3.05	3.39
0606	482	397	85	3.16	3.41
0608	508	399	109	3.21	3.59
0610	385	306	79	3.16	3.59
0612	517	438	79	3.32	3.59
0614	413	351	62	3.48	3.70
061601	683	578	105	3.20	3.47

**Total Households by Household Family Type
by Census Tract, 2000
Queens Community District 13**

Census Tract	Total Households	Total Family Households	Total Non-Family Households	Average Household Size	Average Family Size
061602	524	387	137	2.95	3.46
0618	626	405	221	2.56	3.25
0620	489	409	80	3.20	3.46
0624	228	172	56	2.94	3.38
0626	865	698	167	3.08	3.37
0630	537	439	98	3.30	3.58
0632	714	588	126	3.37	3.66
0638	1,162	898	264	3.28	3.77
0646	966	781	185	3.24	3.57
0650	941	743	198	3.22	3.63
0654	820	658	162	3.29	3.67
0656	1,302	1,080	222	3.36	3.65
0660	955	779	176	3.37	3.68
0664	3,011	2,402	609	3.25	3.63
0680	1,333	1,088	245	3.23	3.51
0682	403	305	98	3.13	3.59
0690	1,019	819	200	3.22	3.56
0694	896	718	178	3.17	3.49
0716 *	12	8	4	2.33	2.75
0766 *	179	134	45	3.15	3.63
084602 *	242	180	62	3.10	3.64
1301 *	1,576	1,073	503	2.54	3.18
155101 *	1,541	555	986	1.44	2.10
155102 *	3,417	1,990	1,427	2.22	2.96
1567 *	67	15	52	1.30	2.20
157101	2,565	1,937	628	2.81	3.31
157102	538	392	146	2.83	3.41
157901	1,846	1,327	519	2.66	3.23
157902	1,181	966	215	3.08	3.48
157903	1,366	1,011	355	2.81	3.34
1617	1,490	1,173	317	2.93	3.35
1621	2,022	1,530	492	3.06	3.59

* Census tract is within two or more community districts. Data are for entire census tract.

**Age and Nativity
by Census Tract, 2000
Queens Community District 13**

Census Tract	Total Population	% under 18	% 18 to 64	% 65 and over	% Foreign Born
0304 *	3,345	28.3	62.4	9.3	39.8
0320 *	4,585	35.3	57.7	7.0	22.7
0328 *	2,155	26.7	65.0	8.4	35.5
0358	3,923	26.2	63.0	10.8	29.0
0384 *	2,608	26.4	60.9	12.7	37.3
0492 *	5,194	26.1	65.9	8.0	46.9
0496	3,463	27.6	65.2	7.2	50.9
0512	2,885	28.5	60.8	10.8	31.2
0516	2,143	27.2	62.4	10.4	34.9
0534	1,868	25.2	63.8	11.0	37.2
0536	2,154	27.2	60.2	12.6	36.0
0538	1,952	26.4	61.8	11.8	48.2
0540	4,496	29.8	62.1	8.1	46.2
0542	5,709	27.2	65.2	7.6	55.0
0548	2,392	26.8	64.5	8.7	59.4
0552 *	3,497	23.9	64.2	11.9	55.6
0554	2,492	22.4	66.1	11.5	56.7
0556	2,254	25.9	64.6	9.5	46.4
0558	1,967	28.9	62.4	8.7	39.7
0560	1,826	25.6	65.4	9.0	46.2
0562	1,484	26.3	65.1	8.6	42.7
0564	1,839	26.1	66.4	7.5	34.5
0566	1,588	26.1	65.6	8.2	49.6
0568	5,356	28.4	63.4	8.3	42.8
0578	3,477	27.0	60.7	12.3	38.1
0580	4,145	26.1	64.5	9.4	43.6
0588	1,120	23.5	64.1	12.4	45.6
0590	1,241	21.5	66.8	11.7	32.9
0592	1,263	24.0	67.5	8.6	50.8
0594	1,780	20.8	67.1	12.1	37.1
0596	1,614	22.7	65.7	11.6	36.7
0598	1,830	25.8	61.1	13.1	27.4
0600	1,260	22.1	63.1	14.8	35.6
0602	1,212	24.2	63.7	12.1	42.6
0604	1,026	21.9	63.1	15.0	33.0
0606	1,521	23.7	62.9	13.4	35.1
0608	1,631	24.7	62.2	13.1	39.7
0610	1,216	23.8	62.1	14.1	33.3
0612	1,719	20.8	66.3	13.0	44.4
0614	1,436	25.4	63.1	11.5	32.8
061601	2,189	23.1	65.1	11.8	36.6
061602	1,545	23.7	65.6	10.7	34.6
0618	1,603	22.5	65.6	11.9	32.4
0620	1,567	23.2	64.6	12.2	27.0
0624	671	24.9	61.0	14.2	31.3
0626	2,668	24.1	64.2	11.6	31.1
0630	1,770	24.4	65.6	10.0	30.5
0632	2,407	25.3	66.6	8.2	31.2

**Age and Nativity
by Census Tract, 2000
Queens Community District 13**

Census Tract	Total Population	% under 18	% 18 to 64	% 65 and over	% Foreign Born
0638	3,835	26.2	64.3	9.5	46.0
0646	3,134	23.8	65.6	10.6	38.2
0650	3,027	24.2	65.8	9.9	37.2
0654	2,699	28.0	64.2	7.8	43.6
0656	4,373	29.7	61.3	9.0	46.7
0660	3,214	29.2	62.6	8.2	44.6
0664	9,808	30.1	63.1	6.8	45.7
0680	4,310	26.0	64.5	9.5	34.3
0682	1,261	25.5	65.5	9.0	44.3
0690	3,285	27.2	63.7	9.1	38.1
0694	2,861	26.9	63.8	9.3	45.3
0716 *	28	21.4	71.4	7.1	0.0
0766 *	564	27.1	63.7	9.2	28.9
084602 *	1,109	31.5	58.6	9.9	27.1
1301 *	3,998	20.6	53.8	25.7	36.1
155101 *	2,212	1.4	22.9	75.7	12.5
155102 *	7,786	20.4	64.4	15.2	27.7
1567 *	1,204	6.8	85.6	7.6	18.9
157101	7,199	22.6	60.9	16.5	32.9
157102	1,523	22.5	59.2	18.3	34.2
157901	4,902	19.7	57.3	22.9	28.8
157902	3,685	22.5	57.3	20.1	40.7
157903	3,841	21.6	59.7	18.8	32.3
1617	4,359	24.2	61.2	14.6	24.2
1621	6,181	26.1	63.0	10.9	36.8

* Census tract is within two or more community districts. Data are for entire census tract.

**Income and Education
by Census Tract, 2000
Queens Community District 13**

Census Tract	Median Household Income	% Persons below Poverty	% Families below Poverty	Population 25 +	% High School Graduates or Higher	% College Graduates or Higher
0304 *	\$55,586	7.5	8.0	2,055	76.3	22.5
0320 *	\$46,696	27.7	12.0	2,508	66.3	14.8
0328 *	\$55,625	4.0	1.5	1,530	81.6	31.0
0358	\$51,960	10.7	10.3	2,654	79.0	23.9
0384 *	\$57,708	8.0	6.6	1,645	81.9	23.2
0492 *	\$37,928	12.2	9.7	3,359	73.1	22.1
0496	\$57,143	8.6	6.4	2,276	71.7	20.1
0512	\$54,130	6.5	4.7	1,785	81.0	15.9
0516	\$59,038	6.0	2.8	1,460	79.7	23.4
0534	\$52,708	13.8	15.1	1,135	80.4	15.9
0536	\$52,883	7.4	5.6	1,406	78.2	19.7
0538	\$64,554	6.2	4.5	1,264	73.4	16.4
0540	\$56,425	11.6	7.9	2,685	69.2	13.9
0542	\$53,846	8.1	7.9	3,611	68.5	18.0
0548	\$62,216	11.2	7.6	1,566	79.9	21.9
0552 *	\$50,568	5.0	5.0	2,333	74.6	17.7
0554	\$56,352	7.4	5.1	1,623	79.9	28.0
0556	\$56,250	5.5	3.2	1,486	70.3	16.5
0558	\$73,824	8.3	6.9	1,139	81.7	28.7
0560	\$48,542	10.8	9.8	1,024	76.2	21.9
0562	\$64,375	4.4	2.8	1,020	82.9	26.6
0564	\$55,435	6.2	6.2	1,171	81.5	19.4
0566	\$53,550	6.8	5.4	1,089	86.0	20.4
0568	\$48,400	11.1	10.3	3,360	74.9	18.2
0578	\$50,625	7.2	6.9	2,150	83.8	19.3
0580	\$55,750	8.0	6.2	2,677	74.6	19.9
0588	\$45,417	6.9	5.5	816	77.9	16.9
0590	\$65,192	3.1	1.3	859	85.3	14.1
0592	\$53,672	5.8	6.0	914	76.7	24.3
0594	\$68,833	6.5	6.7	1,188	90.0	27.4
0596	\$65,469	6.7	3.5	1,119	88.1	29.9
0598	\$54,484	8.4	4.1	1,206	80.5	25.0
0600	\$65,000	3.5	3.2	862	87.0	30.9
0602	\$57,045	5.2	3.8	699	77.8	26.9
0604	\$55,476	5.9	6.7	751	79.2	23.6
0606	\$59,875	5.8	4.5	1,083	87.5	18.3
0608	\$66,964	2.6	2.4	999	85.7	36.2
0610	\$73,750	1.0	0.0	822	89.1	15.5
0612	\$76,408	4.7	6.2	1,205	91.0	28.0
0614	\$63,482	4.7	2.0	989	82.2	21.2
061601	\$71,144	3.6	0.8	1,572	86.4	31.1
061602	\$56,310	7.3	4.1	1,087	87.4	22.7
0618	\$55,375	9.2	7.5	1,027	85.6	19.4
0620	\$59,688	5.6	5.5	1,133	89.8	25.2
0624	\$65,885	5.5	0.0	474	74.7	22.2
0626	\$54,412	2.8	1.0	1,723	84.7	19.8
0630	\$65,000	2.9	1.4	1,187	83.2	21.1
0632	\$60,150	4.4	2.5	1,615	79.7	18.9

**Income and Education
by Census Tract, 2000
Queens Community District 13**

Census Tract	Median Household Income	% Persons below Poverty	% Families below Poverty	Population 25 +	% High School Graduates or Higher	% College Graduates or Higher
0638	\$58,164	8.4	5.3	2,467	77.8	19.5
0646	\$58,333	4.4	1.3	2,064	87.1	26.6
0650	\$63,359	6.6	6.0	2,045	80.8	20.4
0654	\$60,542	8.3	7.3	1,684	86.0	19.5
0656	\$55,923	10.5	9.7	2,673	79.7	18.0
0660	\$65,153	7.1	5.1	1,908	83.4	22.6
0664	\$59,375	5.9	5.3	5,920	83.6	21.0
0680	\$66,071	3.0	2.5	2,827	87.0	23.7
0682	\$63,548	1.7	2.1	941	71.4	24.5
0690	\$51,131	16.7	13.8	2,072	75.1	17.3
0694	\$51,229	4.7	4.6	1,860	79.9	20.7
0716 *	\$47,750	0.0	0.0	30	100.0	0.0
0766 *	\$16,473	26.4	15.6	430	74.7	9.8
084602 *	\$53,646	15.3	3.9	521	63.9	7.7
1301 *	\$46,680	4.4	4.1	2,904	86.5	30.5
155101 *	\$55,724	4.6	1.5	2,224	96.4	46.7
155102 *	\$50,637	6.2	5.0	5,739	87.4	36.1
1567 *	\$6,771	23.7	50.0	1,032	33.4	6.1
157101	\$60,117	6.7	4.9	5,174	85.0	32.8
157102	\$66,103	4.8	2.8	978	75.1	28.1
157901	\$58,226	5.4	3.5	3,574	85.3	33.5
157902	\$65,774	5.9	4.1	2,642	84.9	35.3
157903	\$52,188	2.5	1.0	2,792	84.8	31.1
1617	\$63,250	4.2	3.4	2,978	86.9	28.5
1621	\$53,812	5.6	4.7	4,001	81.5	25.3

* Census tract is within two or more community districts. Data are for entire census tract.

**Employment Status for Population 16 and Over
by Census Tract, 2000
Queens Community District 13**

Census Tract	Population 16+	Number of Persons 16+ in Labor Force	% of Labor Force Unemployed	% of Labor Force Female	% of Labor Force Male
0304 *	2,506	1559	11.4	57.0	43.0
0320 *	3,111	2008	31.2	63.1	36.9
0328 *	1,781	1226	8.5	52.7	47.3
0358	3,195	1959	16.4	52.1	47.9
0384 *	1,976	1228	5.4	57.4	42.6
0492 *	3,993	2553	8.8	50.2	49.8
0496	2,652	1815	8.2	47.5	52.5
0512	2,172	1343	8.0	60.0	40.0
0516	1,732	1107	5.4	52.5	47.5
0534	1,450	875	7.3	57.8	42.2
0536	1,684	965	4.2	61.5	38.5
0538	1,467	932	5.2	56.4	43.6
0540	3,305	1972	8.9	54.7	45.3
0542	4,322	2709	7.4	50.0	50.0
0548	1,842	1199	4.8	49.0	51.0
0552 *	2,741	1620	5.9	46.6	53.4
0554	1,957	1225	3.4	47.8	52.2
0556	1,691	1209	6.4	52.6	47.4
0558	1,404	959	4.8	45.4	54.6
0560	1,335	723	8.2	37.5	62.5
0562	1,145	864	8.0	54.4	45.6
0564	1,383	881	1.9	50.5	49.5
0566	1,321	797	2.0	45.8	54.2
0568	4,026	2540	6.9	51.8	48.2
0578	2,581	1656	8.6	54.6	45.4
0580	3,205	2145	9.0	53.9	46.1
0588	942	630	7.1	48.1	51.9
0590	989	675	3.0	59.4	40.6
0592	1,018	671	2.7	53.7	46.3
0594	1,445	936	6.2	54.3	45.7
0596	1,332	827	10.3	52.6	47.4
0598	1,401	956	10.1	54.7	45.3
0600	977	625	8.2	50.4	49.6
0602	861	509	5.9	48.7	51.3
0604	804	497	6.8	60.2	39.8
0606	1,269	818	4.2	54.2	45.8
0608	1,197	830	6.6	54.1	45.9
0610	964	561	6.2	66.0	34.0
0612	1,393	826	6.2	54.7	45.3
0614	1,100	729	5.6	55.7	44.3
061601	1,842	1204	7.8	54.7	45.3
061602	1,270	823	9.5	55.5	44.5
0618	1,159	721	7.8	59.6	40.4
0620	1,291	877	3.6	56.8	43.2
0624	565	318	11.6	56.9	43.1
0626	2,070	1403	5.8	57.2	42.8
0630	1,389	1004	14.9	58.1	41.9
0632	2,004	1261	9.8	53.4	46.6

**Employment Status for Population 16 and Over
by Census Tract, 2000
Queens Community District 13**

Census Tract	Population 16+	Number of Persons 16+ in Labor Force	% of Labor Force Unemployed	% of Labor Force Female	% of Labor Force Male
0638	2,990	1815	6.4	53.6	46.4
0646	2,475	1564	3.3	56.7	43.3
0650	2,370	1647	10.8	54.8	45.2
0654	1,983	1371	5.5	53.8	46.2
0656	3,199	2153	7.9	52.7	47.3
0660	2,347	1607	10.1	56.7	43.3
0664	7,148	4922	7.5	52.7	47.3
0680	3,368	2236	4.7	52.8	47.2
0682	1,094	730	9.6	49.9	50.1
0690	2,468	1607	9.4	50.0	50.0
0694	2,187	1438	5.6	52.6	47.4
0716 *	30	18	0.0	55.6	44.4
0766 *	467	205	14.6	62.0	38.0
084602 *	911	513	35.1	48.7	51.3
1301 *	3,303	1615	3.0	49.2	50.8
155101 *	2,250	651	4.3	49.0	51.0
155102 *	6,365	3948	5.8	47.2	52.8
1567 *	1,124	8	0.0	50.0	50.0
157101	5,770	3521	4.8	46.7	53.3
157102	1,166	748	3.6	50.1	49.9
157901	3,987	2301	2.0	46.9	53.1
157902	2,945	1650	3.9	45.5	54.5
157903	3,086	1708	4.9	42.3	57.7
1617	3,424	2151	2.6	48.3	51.7
1621	4,726	3022	4.9	47.2	52.8

* Census tract is within two or more community districts. Data are for entire census tract.

**Selected Housing Characteristics
Total Housing Units & Occupancy Status
by Census Tract, 2000
Queens Community District 13**

Census Tract	Total Housing Units	Occupancy Status			
		Total Occupied Housing Units	% Owner Occupied	% Renter Occupied	% Overcrowded**
0304 *	1,056	996	68.4	31.6	11.6
0320 *	1,053	998	66.4	33.6	10.5
0328 *	776	741	60.7	39.3	4.7
0358	1,325	1,236	71.2	28.8	7.2
0384 *	883	815	72.8	27.2	7.6
0492 *	1,861	1,843	28.2	71.8	22.2
0496	930	930	73.3	26.7	15.5
0512	753	753	76.5	23.5	17.1
0516	659	643	75.7	24.3	7.8
0534	575	575	64.9	35.1	7.3
0536	651	614	79.6	20.4	14.5
0538	535	535	69.9	30.1	11.4
0540	1,292	1,215	61.8	38.2	17.2
0542	1,602	1,523	77.2	22.8	17.4
0548	645	645	83.3	16.7	16.0
0552 *	1,101	1,101	39.8	60.2	16.1
0554	844	810	66.0	34.0	14.7
0556	619	619	90.1	9.9	8.7
0558	526	513	88.3	11.7	25.5
0560	524	514	70.4	29.6	13.2
0562	450	427	80.1	19.9	15.7
0564	581	552	44.7	55.3	15.4
0566	516	495	62.0	38.0	8.7
0568	1,637	1,561	52.4	47.6	14.3
0578	1,015	986	71.1	28.9	11.3
0580	1,196	1,164	74.3	25.7	11.1
0588	386	370	84.6	15.4	2.4
0590	427	409	83.4	16.6	2.0
0592	397	397	87.4	12.6	3.8
0594	533	526	88.4	11.6	5.1
0596	521	508	88.4	11.6	10.8
0598	610	583	74.4	25.6	7.4
0600	400	400	89.8	10.3	1.5
0602	362	356	90.2	9.8	2.8
0604	336	329	86.0	14.0	3.0
0606	473	471	84.9	15.1	5.7
0608	532	507	76.3	23.7	9.9
0610	399	394	79.2	20.8	3.3
0612	552	526	89.2	10.8	4.4
0614	404	404	90.6	9.4	12.4
061601	685	685	90.1	9.9	6.3
061602	550	528	77.8	22.2	9.3
0618	645	620	72.9	27.1	10.3
0620	515	506	90.7	9.3	5.5
0624	244	234	83.3	16.7	9.0

**Selected Housing Characteristics
Total Housing Units & Occupancy Status
by Census Tract, 2000
Queens Community District 13**

Census Tract	Total Housing Units	Occupancy Status			
		Total Occupied Housing Units	% Owner Occupied	% Renter Occupied	% Overcrowded**
0626	904	865	82.5	17.5	7.4
0630	559	547	83.5	16.5	9.3
0632	770	748	79.4	20.6	13.1
0638	1,200	1,162	78.7	21.3	10.8
0646	1,041	990	78.2	21.8	6.4
0650	958	941	83.5	16.5	4.9
0654	834	774	75.5	24.5	9.3
0656	1,365	1,302	66.4	33.6	11.1
0660	974	941	68.1	31.9	9.2
0664	3,170	3,011	60.3	39.7	8.0
0680	1,405	1,333	76.9	23.1	10.3
0682	469	419	76.8	23.2	6.9
0690	1,085	1,019	64.5	35.5	9.0
0694	954	897	61.1	38.9	11.0
0716 *	14	14	100.0	0.0	0.0
0766 *	216	197	85.3	14.7	4.1
084602 *	239	225	79.1	20.9	7.1
1301 *	1,641	1,576	79.0	21.0	7.7
155101 *	1,926	1,597	81.5	18.5	1.0
155102 *	3,550	3,417	51.4	48.6	7.0
1567 *	78	64	0.0	100.0	32.8
157101	2,636	2,566	77.4	22.6	5.5
157102	567	537	88.3	11.7	7.1
157901	1,797	1,790	80.1	19.9	5.5
157902	1,203	1,184	89.7	10.3	7.7
157903	1,433	1,366	74.7	25.3	5.6
1617	1,525	1,490	82.6	17.4	6.2
1621	2,101	2,022	60.3	39.7	13.7

* Census tract is within two or more community districts. Data are for entire census tract.

** "Overcrowded" units are those with more than one person per room.

**Selected Housing Characteristics
Number of Units & Age of Structure
by Census Tract, 2000
Queens Community District 13**

Census Tract	Total Housing Units	Units in Structure			Age of Structure		
		% 1 & 2 Units	% 3-9 Units	% 10 units or more	% Built 1990 to 2000	% Built 1950 to 1989	% Built before 1950
0304 *	1,056	94.8	5.2	0.0	22.9	54.5	22.6
0320 *	1,053	93.7	3.7	2.6	8.7	52.8	38.5
0328 *	776	82.6	15.7	1.7	19.1	57.2	23.7
0358	1,325	87.6	10.6	1.7	5.1	69.1	25.8
0384 *	883	97.4	2.6	0.0	3.1	59.8	37.1
0492 *	1,861	40.4	6.8	52.8	0.5	49.7	49.8
0496	930	89.0	6.2	4.7	0.0	41.9	58.1
0512	753	100.0	0.0	0.0	0.0	31.6	68.4
0516	659	93.3	6.7	0.0	0.9	36.0	63.1
0534	575	95.1	4.9	0.0	0.0	46.3	53.7
0536	651	96.8	1.8	1.4	1.2	37.2	61.6
0538	535	93.8	3.6	2.6	1.5	27.1	71.4
0540	1,292	86.5	11.5	2.0	1.5	48.1	50.3
0542	1,602	93.0	7.0	0.0	1.1	26.7	72.2
0548	645	97.5	2.5	0.0	0.0	33.2	66.8
0552 *	1,101	49.2	11.9	38.9	1.2	61.1	37.7
0554	844	81.6	6.2	12.2	0.0	31.5	68.5
0556	619	100.0	0.0	0.0	0.0	24.4	75.6
0558	526	97.0	3.0	0.0	2.9	25.9	71.3
0560	524	95.0	2.9	2.1	2.7	41.2	56.1
0562	450	99.1	0.9	0.0	0.0	17.1	82.9
0564	581	65.1	10.5	24.4	1.5	31.7	66.8
0566	516	85.3	4.3	10.5	2.5	32.0	65.5
0568	1,637	75.0	7.7	17.3	0.0	50.5	49.5
0578	1,015	92.8	7.2	0.0	0.7	38.6	60.7
0580	1,196	95.0	3.3	1.8	2.2	43.6	54.3
0588	386	100.0	0.0	0.0	0.0	53.6	46.4
0590	427	100.0	0.0	0.0	0.0	30.7	69.3
0592	397	98.0	2.0	0.0	0.0	22.9	77.1
0594	533	98.9	1.1	0.0	1.1	36.0	62.9
0596	521	95.0	3.8	1.2	0.0	25.3	74.7
0598	610	94.9	0.0	5.1	0.0	32.3	67.7
0600	400	98.8	1.3	0.0	0.0	21.3	78.8
0602	362	100.0	0.0	0.0	0.0	28.5	71.5
0604	336	92.6	4.5	3.0	0.0	58.6	41.4
0606	473	95.1	4.9	0.0	0.0	27.3	72.7
0608	532	96.1	1.7	2.3	0.0	39.3	60.7
0610	399	100.0	0.0	0.0	0.0	49.9	50.1
0612	552	100.0	0.0	0.0	2.2	42.4	55.4
0614	404	98.5	1.5	0.0	0.0	50.0	50.0
061601	685	97.4	2.6	0.0	0.9	44.7	54.5
061602	550	87.1	5.6	7.3	4.2	60.0	35.8
0618	645	77.5	12.1	10.4	0.0	50.2	49.8
0620	515	100.0	0.0	0.0	1.4	31.7	67.0
0624	244	100.0	0.0	0.0	0.0	25.0	75.0

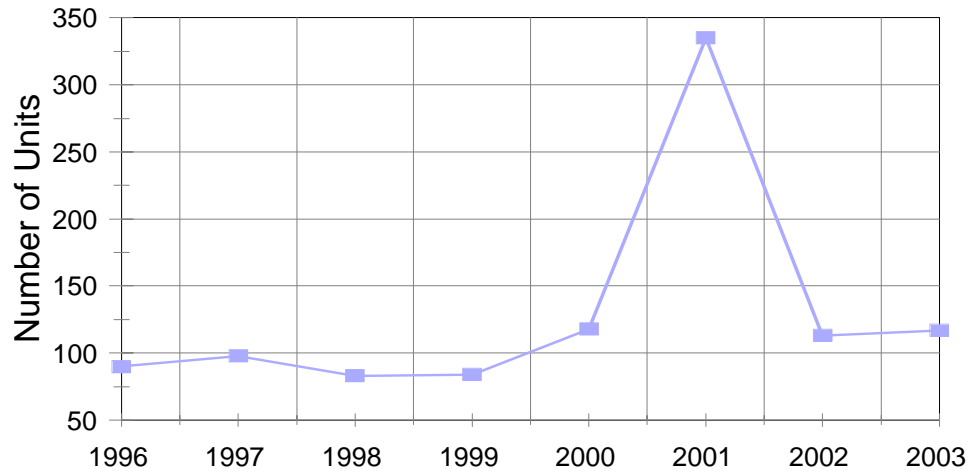
**Selected Housing Characteristics
Number of Units & Age of Structure
by Census Tract, 2000
Queens Community District 13**

Census Tract	Total Housing Units	Units in Structure			Age of Structure		
		% 1 & 2 Units	% 3-9 Units	% 10 units or more	% Built 1990 to 2000	% Built 1950 to 1989	% Built before 1950
0626	904	95.7	4.3	0.0	0.8	49.6	49.7
0630	559	96.6	3.4	0.0	0.0	12.7	87.3
0632	770	97.4	2.6	0.0	0.0	25.1	74.9
0638	1,200	93.3	6.1	0.7	4.0	54.5	41.5
0646	1,041	95.2	4.8	0.0	0.0	37.6	62.4
0650	958	97.0	3.0	0.0	0.0	51.9	48.1
0654	834	97.5	2.5	0.0	0.0	47.4	52.6
0656	1,365	93.6	6.4	0.0	10.1	69.8	20.1
0660	974	92.7	7.3	0.0	4.7	70.3	24.9
0664	3,170	91.2	8.6	0.2	1.1	80.1	18.7
0680	1,405	96.5	3.5	0.0	8.1	62.6	29.3
0682	469	87.8	12.2	0.0	8.7	43.1	48.2
0690	1,085	87.5	10.0	2.5	7.4	73.7	18.9
0694	954	94.7	5.3	0.0	12.2	71.5	16.4
0716 *	14	100.0	0.0	0.0	0.0	0.0	100.0
0766 *	216	100.0	0.0	0.0	4.2	67.1	28.7
084602 *	239	95.4	4.6	0.0	6.7	66.5	26.8
1301 *	1,641	74.5	9.9	15.6	0.0	54.0	46.0
155101 *	1,926	2.4	0.5	97.0	0.0	98.3	1.7
155102 *	3,550	59.2	16.9	23.8	0.2	61.2	38.5
1567 *	78	28.2	17.9	53.8	73.1	26.9	0.0
157101	2,636	93.1	4.2	2.7	0.6	43.5	55.9
157102	567	96.1	3.9	0.0	0.0	51.3	48.7
157901	1,797	88.6	3.9	7.5	1.0	67.8	31.2
157902	1,203	98.3	1.0	0.7	0.2	57.5	42.2
157903	1,433	90.5	4.2	5.3	2.1	43.5	54.4
1617	1,525	96.9	1.6	1.6	0.4	20.1	79.5
1621	2,101	74.8	20.8	4.3	1.0	35.4	63.6

* Census tract is within two or more community districts. Data are for entire census tract.

Selected Housing Characteristics
Building Permits Issued For New Residential Construction
Queens Community District 13, 1996 - 2003

**Total Number of New Housing
Units Issued Permits**



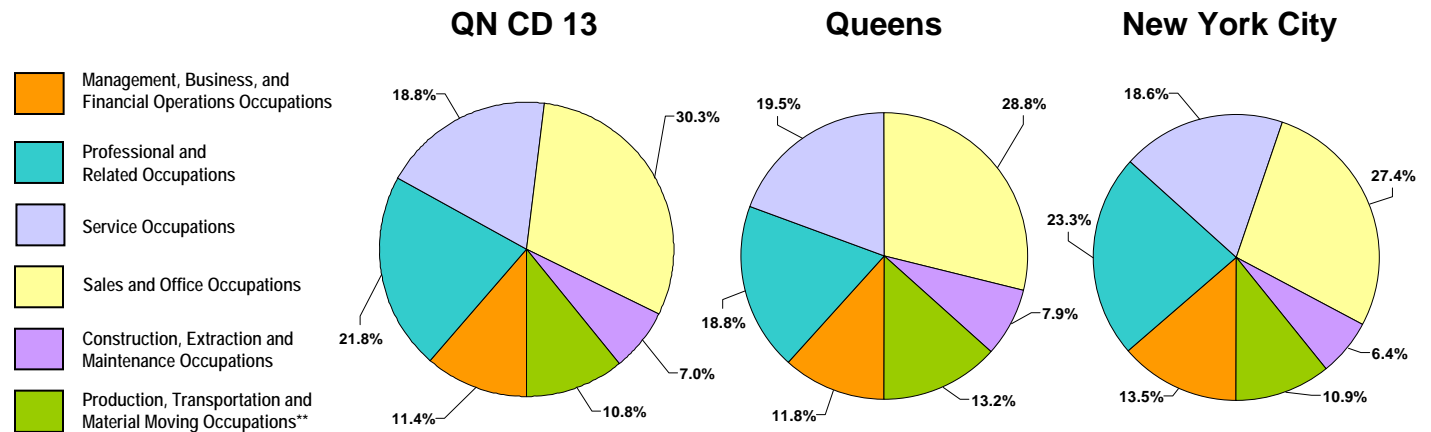
Permits by Building Size

Year	1 & 2 Unit Buildings		3 & 4 Unit Buildings		5+ Unit Buildings		Total Buildings	Total Units
	Buildings	Units	Buildings	Units	Buildings	Units		
1996	57	90	0	0	0	0	57	90
1997	56	98	0	0	0	0	56	98
1998	47	79	1	4	0	0	48	83
1999	36	59	2	6	3	19	41	84
2000	70	118	0	0	0	0	70	118
2001	168	319	0	0	1	16	169	335
2002	64	110	1	3	0	0	65	113
2003	64	101	0	0	1	16	65	117

**Selected Employment Characteristics
Occupation for the Employed Civilian Population
by Census Tract, 2000
Queens Community District 13**

Census Tract	Total Employed Civilian Population 16 Years & Over by Occupation							
	Total Employed Civilian Population 16 Years and Over	Management, Professional, and Related Occupations:			Service Occupations	Sales and Office Occupations	Construction, Extraction, and Maintenance Occupations	Production, Transportation, and Material Moving Occupations**
		Total	Management, Business, and Financial Operations Occupations	Professional and Related Occupations				
0304*	1,382	335	131	204	356	410	118	163
0320*	1,381	317	129	188	404	467	45	148
0328*	1,122	359	126	233	341	277	70	75
0358	1,637	569	209	360	390	445	106	127
0384*	1,162	349	117	232	274	307	110	122
0492*	2,328	652	220	432	529	624	204	319
0496	1,667	417	187	230	303	627	122	198
0512	1,236	282	90	192	373	385	101	95
0516	1,047	327	169	158	323	271	33	93
0534	811	243	70	173	215	248	54	51
0536	924	291	55	236	273	249	60	51
0538	884	251	107	144	274	213	55	91
0540	1,796	538	163	375	434	444	95	285
0542	2,509	646	161	485	475	754	248	386
0548	1,142	373	146	227	220	344	45	160
0552*	1,525	409	100	309	357	476	61	222
0554	1,183	416	131	285	142	385	81	159
0556	1,132	242	69	173	177	463	49	201
0558	913	281	102	179	144	303	84	101
0560	664	196	86	110	100	203	56	109
0562	795	209	88	121	133	246	68	139
0564	864	289	97	192	163	229	101	82
0566	781	232	50	182	106	260	112	71
0568	2,366	763	298	465	431	704	209	259
0578	1,514	445	93	352	345	436	104	184
0580	1,952	526	243	283	395	602	117	312
0588	585	183	53	130	138	146	41	77
0590	655	229	48	181	179	118	46	83
0592	653	260	76	184	102	199	40	52
0594	878	321	109	212	188	245	72	52
0596	742	273	85	188	76	237	78	78
0598	859	263	125	138	206	226	82	82
0600	574	260	110	150	92	168	31	23
0602	479	178	34	144	64	139	42	56
0604	463	123	26	97	108	141	54	37
0606	784	225	80	145	165	234	77	83
0608	775	263	133	130	200	200	65	47

Table continues on next page.



**Selected Employment Characteristics
Occupation for the Employed Civilian Population
by Census Tract, 2000
Queens Community District 13**

Census Tract	Total Employed Civilian Population 16 Years & Over by Occupation							
	Total Employed Civilian Population 16 Years and Over	Management, Professional, and Related Occupations:			Service Occupations	Sales and Office Occupations	Construction, Extraction, and Maintenance Occupations	Production, Transportation, and Material Moving Occupations**
		Total	Management, Business, and Financial Operations Occupations	Professional and Related Occupations				
0610	526	195	54	141	115	112	58	46
0612	775	272	107	165	113	228	93	69
0614	688	191	57	134	205	215	28	49
061601	1,110	467	222	245	167	313	35	128
061602	745	264	109	155	100	232	76	73
0618	665	225	138	87	102	248	46	44
0620	845	319	107	212	119	282	47	78
0624	281	121	35	86	41	69	14	36
0626	1,322	362	100	262	292	472	104	92
0630	854	230	78	152	166	288	61	109
0632	1,138	373	106	267	234	354	75	102
0638	1,698	593	230	363	326	425	100	254
0646	1,512	510	188	322	337	436	76	153
0650	1,469	534	165	369	268	426	81	160
0654	1,295	450	160	290	263	325	142	115
0656	1,983	586	184	402	392	675	126	204
0660	1,444	495	162	333	326	355	91	177
0664	4,551	1,559	450	1,109	884	1,353	289	466
0680	2,130	774	380	394	365	604	133	254
0682	660	208	85	123	128	175	36	113
0690	1,456	478	115	363	247	423	142	166
0694	1,358	347	60	287	361	397	119	134
0716*	18	0	0	0	0	10	0	8
0766*	175	27	10	17	41	88	0	19
084602*	333	89	13	76	49	101	53	41
1301*	1,567	601	192	409	194	443	135	194
155101*	623	345	140	205	28	228	22	0
155102*	3,720	1,619	465	1,154	364	1,233	229	275
1567*	8	0	0	0	8	0	0	0
157101	3,352	1,414	511	903	369	1,078	174	317
157102	721	242	54	188	113	204	92	70
157901	2,256	949	364	585	308	705	133	161
157902	1,586	587	229	358	144	562	107	186
157903	1,625	716	286	430	173	426	124	186
1617	2,094	679	271	408	331	738	157	189
1621	2,873	871	218	653	507	986	148	361

*Census tract is within two or more community districts. Data are for entire census tract.

** Includes farming, fishing and forestry occupations.

**Selected Employment Characteristics
Total Workers at Place of Work by Industry
by Census Tract, 2000
Queens Community District 13**

Census Tract	Workers 16 Years and Over by Industry								
	Total Workers at Place of Work	Agriculture**; Construction; Manufacturing; Transportation and warehousing and utilities	Wholesale trade; Retail trade	Information; Finance; insurance, real estate and rental and leasing	Professional, scientific, management, administrative, and waste management services	Educational, health and social services	Arts, entertainment, recreation, accommodation and food services; Other services (except public administration)	Public administration; Armed forces	
0304*	1,905	1,245	185	100	20	215	80	65	
0320*	4,775	2,395	405	210	330	545	705	195	
0328*	180	54	40	4	15	45	4	15	
0358	315	90	40	0	0	125	60	4	
0384*	115	10	30	15	30	15	15	0	
0492*	535	0	40	140	35	200	130	0	
0496	120	10	65	19	4	4	8	0	
0512	360	130	50	4	25	80	70	0	
0516	125	15	10	35	15	10	40	0	
0534	195	10	10	20	10	130	10	10	
0536	95	10	10	4	10	50	10	0	
0538	95	0	0	0	0	60	35	0	
0540	565	140	125	25	50	75	134	15	
0542	455	49	4	40	70	235	20	40	
0548	155	0	90	25	4	30	0	0	
0552*	430	60	50	39	35	65	180	0	
0554	75	25	19	25	0	0	4	0	
0556	45	10	25	4	0	0	0	0	
0558	50	20	0	0	10	20	0	0	
0560	540	50	10	4	30	165	80	205	
0562	15	0	0	0	0	4	10	0	
0564	235	34	75	40	20	55	10	0	
0566	340	15	49	95	35	95	45	0	
0568	2,765	1,655	185	150	100	260	295	115	
0578	250	4	15	10	20	115	85	0	
0580	45	25	0	0	0	4	15	0	
0588	65	0	25	0	0	40	0	0	
0590	0	0	0	0	0	0	0	0	
0592	15	4	0	0	0	4	0	0	
0594	30	0	4	25	0	0	0	0	
0596	200	12	10	25	10	55	80	0	
0598	735	15	0	0	20	655	35	10	
0600	45	0	0	20	10	4	10	0	
0602	65	70	0	0	0	0	0	0	

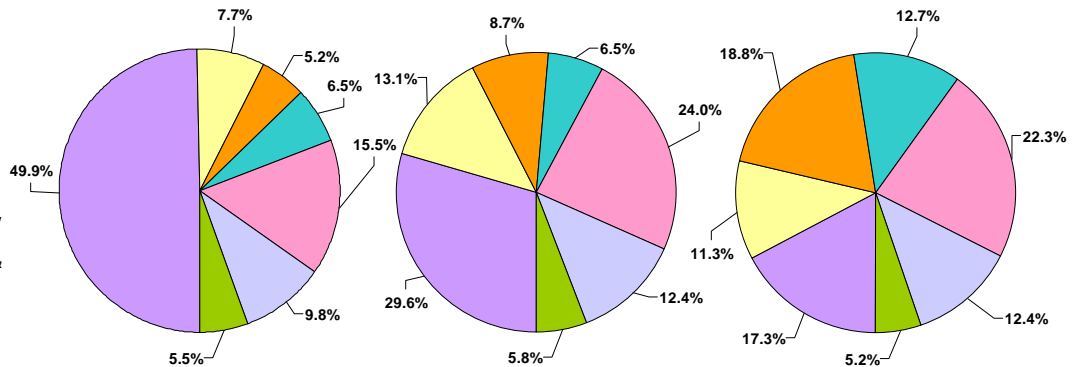
Table continues on next page.



QN CD 13

Queens

New York City



Note: CD percentages are approximations based on the sum of whole census tracts which do not represent exact CD boundaries.

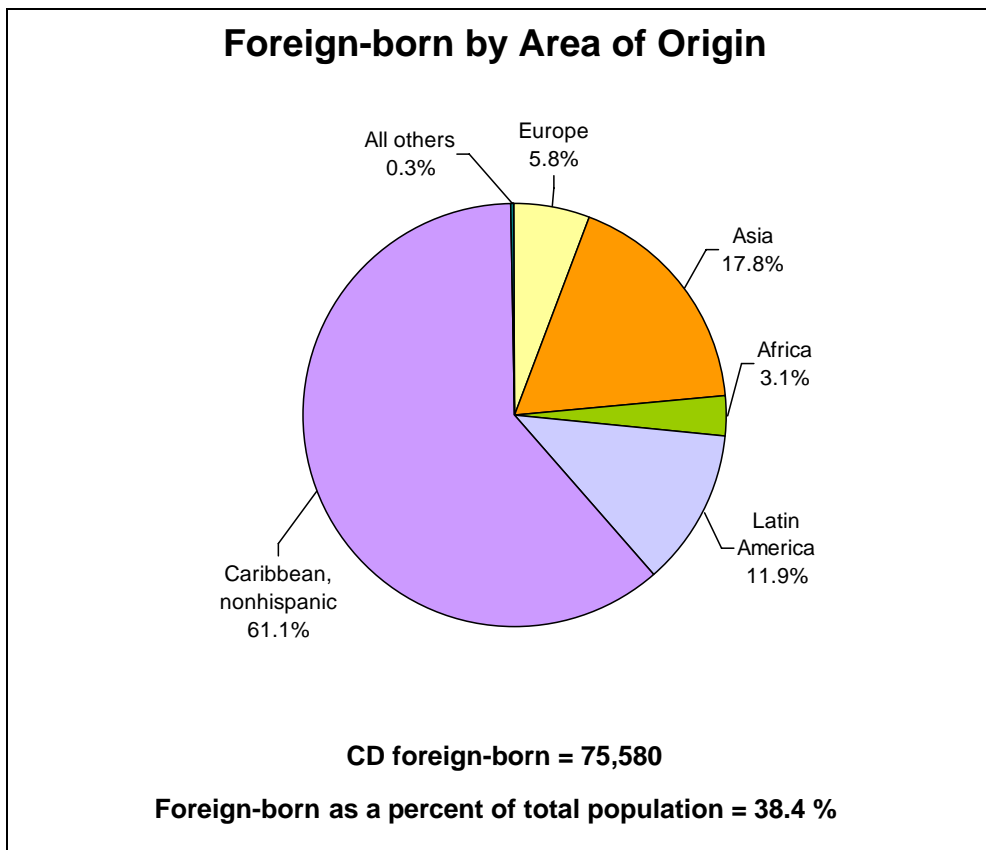
**Selected Employment Characteristics
Total Workers at Place of Work by Industry
by Census Tract, 2000
Queens Community District 13**

Census Tract	Workers 16 Years and Over by Industry							
	Total Workers at Place of Work	Agriculture**; Construction; Manufacturing; Transportation and warehousing and utilities	Wholesale trade; Retail trade	Information; Finance, insurance, real estate and rental and leasing	Professional, scientific, management, administrative, and waste management services	Educational, health and social services	Arts, entertainment, recreation, accommodation and food services; Other services (except public administration)	Public administration; Armed forces
0604	100	85	0	0	0	15	0	0
0606	90	20	35	4	0	20	4	0
0608	35	4	15	0	0	4	4	0
0610	10	0	0	0	10	0	0	0
0612	15	0	0	0	0	15	0	0
0614	60	0	0	4	0	45	0	15
061601	40	15	0	10	20	0	0	0
061602	455	20	0	160	0	190	75	10
0618	80	30	20	0	4	15	15	0
0620	25	0	10	0	0	0	15	0
0624	20	0	0	0	0	0	20	0
0626	160	55	55	0	0	35	0	15
0630	100	0	4	50	0	0	30	10
0632	640	29	60	105	60	290	95	0
0638	525	185	50	20	30	165	80	0
0646	105	0	0	4	0	95	4	0
0650	90	15	0	0	4	50	20	0
0654	325	110	55	85	4	30	30	4
0656	200	80	20	20	25	20	35	0
0660	220	24	25	25	0	145	0	0
0664	985	284	385	0	75	115	109	15
0680	190	19	35	10	25	60	50	0
0682	155	104	0	10	0	35	4	0
0690	235	70	15	95	20	25	8	0
0694	210	39	70	0	10	90	0	0
0716*	46,355	30,275	2,435	1,735	3,285	1,525	3,875	3,225
0766*	1,495	1,030	230	100	20	55	20	40
084602*	625	180	60	4	195	80	45	60
1301*	650	0	150	50	35	315	100	4
155101*	200	15	25	50	35	15	60	0
155102*	3,535	60	330	85	70	2,860	135	0
1567*	2,355	24	10	4	50	1,820	200	245
157101	440	75	75	49	75	125	30	0
157102	65	0	45	0	4	0	15	0
157901	170	15	0	40	0	35	85	0
157902	840	35	104	160	25	365	130	15
157903	280	80	20	35	20	30	95	0
1617	560	49	165	85	120	40	100	0
1621	320	130	20	10	4	100	49	4

*Census tract is within two or more community districts. Data are for entire census tract.

**Includes forestry, fishing, hunting & mining.

**Foreign-born Population
Census 2000
Queens Community District 13**



**Foreign-born Rank Ordered
by Country of Birth**

	NUMBER	PERCENT
TOTAL, Foreign-born	75,580	100.0
Jamaica	17,276	22.9
Haiti	12,677	16.8
Guyana	8,121	10.7
India	7,080	9.4
Trinidad and Tobago	4,327	5.7
Philippines	2,329	3.1
Colombia	1,883	2.5
Barbados	1,477	2.0
Dominican Republic	1,467	1.9
Panama	1,154	1.5
All Others	17,789	23.5

**Language Proficiency
Census 2000
Queens Community District 13**

	Number	Percent
Total Population 5 Years and Over	184,538	100.0
Proficient in English	162,801	88.2
Not Proficient in English	21,737	11.8
Not Proficient in English	21,737	100.0
Language Spoken at Home:		
French (incl Patois, Cajun, French Creole)	6,835	31.4
Spanish or Spanish Creole	6,716	30.9
Chinese	807	3.7
Tagalog	675	3.1
Italian	654	3.0
Gujarathi	552	2.5
Hindi	434	2.0
African Languages	306	1.4
Urdu	280	1.3
Korean	249	1.1
Portuguese or Portuguese Creole	185	0.9
German	172	0.8
Greek	170	0.8
Polish	135	0.6
Persian	131	0.6
Arabic	107	0.5
All Others	3,329	15.3

**Selected Facilities and Program Sites
In New York City, 2002-2005**

QUEENS COMMUNITY DISTRICT 13

<u>Block</u>	<u>Lot</u>	<u>Facility Name</u>	<u>Facility Address</u>	<u>Facility Type</u>	<u>Capacity</u>	<u>Oversight Agency</u>
SCHOOLS						
<i>Public Elementary and Secondary Schools</i>						
7955	2	P.S. 18 WINCHESTER SCHOOL	86-35 235th Court	Elementary School - Public	495 Enrollment	NYC DOE
10756	1	P.S. 33 EDWARD M. FUNK SCHOOL	91-37 222d St	Elementary School - Public	1314 Enrollment	NYC DOE
11151	81	P.S. 34 JOHN HARVARD SCHOOL	104-12 Springfield Blvd	Elementary School - Public	720 Enrollment	NYC DOE
13222	1	P.S. 38 ROSEDALE SCHOOL	135-21 241 St	Elementary School - Public	483 Enrollment	NYC DOE
8717	1	P.S. 115 GLEN OAKS SCHOOL	80-51 261 St	Elementary School - Public	532 Enrollment	NYC DOE
12927	28	P.S. 132 RALPH BUNCHE SCHOOL	132-15 218 St	Elementary School - Public	486 Enrollment	NYC DOE
8616	1	P.S. 133	248-05 86 Ave	Elementary School - Public	550 Enrollment	NYC DOE
13578	1	P.S. 138 SUNRISE SCHOOL	251-11 Weller Ave	Elementary School - Public	830 Enrollment	NYC DOE
11300	1	P.S. 147 RONALD MCNAIR SCHOOL	218-01 116 Ave	Elementary School - Public	749 Enrollment	NYC DOE
13170	12	P.S. 156 THE LAURELTON SCHOOL	229-02 137 Ave	Elementary School - Public	750 Enrollment	NYC DOE
12820	1	P.S. 176 CAMBRIA HEIGHTS SCHOOL	120-45 235 St	Elementary School - Public	612 Enrollment	NYC DOE
13718	1	P.S. 181 BROOKFIELD SCHOOL	148-15 230 St	Elementary School - Public	595 Enrollment	NYC DOE
8401	375	P.S. 186 CASTLEWOOD SCHOOL	252-12 72 Ave	Elementary School - Public	356 Enrollment	NYC DOE
8801	14	P.S. 191 MAYFLOWER SCHOOL	85-15 258 St	Elementary School - Public	349 Enrollment	NYC DOE
13655	1	P.S. 195 WILLIAM HABERLE SCHOOL	253-50 149 Ave	Elementary School - Public	687 Enrollment	NYC DOE
13331	1	P.S. 251	144-51 Arthur St	Elementary School - Public	430 Enrollment	NYC DOE
13353	20	P.S. 52	178-37 146 Terr Blvd	Elementary School - Public	590 Enrollment	NYC DOE
12973	1	PS 270	233-15 Merrick Blvd	Elementary School - Public	405 Enrollment	NYC DOE
7870	60	PS/IS 208	74-30 Commonwealth Blvd	Elementary School - Public	684 Enrollment	NYC DOE
7870	60	PS/IS 266	74-10 Commonwealth Blvd	Elementary School - Public	638 Enrollment	NYC DOE
10582	16	THE BELLAIRE SCHOOL	207-11 89 Ave	Elementary School - Public	1268 Enrollment	NYC DOE
13331	1	I.S. 231 MAGNETECH 2000	145-00 Springfield Blvd	Intermediate/JHS -Public	1511 Enrollment	NYC DOE
10626	1	JEAN NUZZI INTERMEDIATE SCHOOL	213-10 92 Ave	Intermediate/JHS -Public	1530 Enrollment	NYC DOE
8731	4	M.S. 172 ERWIN ALTMAN MIDDLE SC	81-14 257 St	Intermediate/JHS - Public	1244 Enrollment	NYC DOE
11049	1	BUSINESS AND COMPUTER APPLICA	207-01 116 Ave	High School - Public	549 Enrollment	NYC DOE
11049	1	HUMANITIES AND THE ARTS MAGNE	207-01 116 Ave	High School - Public	540 Enrollment	NYC DOE
11049	1	MAGNET SCHOOL OD LAW AND GOV	207-01 116 Ave	High School - Public	545 Enrollment	NYC DOE

**Selected Facilities and Program Sites
In New York City, 2002-2005**

QUEENS COMMUNITY DISTRICT 13

<u>Block</u>	<u>Lot</u>	<u>Facility Name</u>	<u>Facility Address</u>	<u>Facility Type</u>	<u>Capacity</u>	<u>Oversight Agency</u>
<i>Public Elementary and Secondary Schools</i>						
7930	2	MARTIN VAN BUREN HIGH SCHOOL	230-17 Hillside Ave	High School - Public	3230 Enrollment	NYC DOE
11049	1	MATH SCIENCE RESEARCH AND TEC	207-01 116 Ave	High School - Public	502 Enrollment	NYC DOE
8401	1	QUEENS HS OF TEACHING, LIBERAL	74-03 Commonwealth Blvd	High School - Public	360 Enrollment	NYC DOE
8520	2	P.S. 23	75-59 263 St	Special/Other School - Public	349 Enrollment	NYC DOE
8401	375	P.S. 224	252-12 72nd Av	Special/Other School - Public	340 Enrollment	NYC DOE
8801	14	P.S. 993	85-15 258 St	Special/Other School - Public	275 Enrollment	NYC DOE
10540	5	MERRICK ACADEMY-QUEENS PUBLI	207-01 Jamaica Ave	Elementary School - Public Charter	397 Enrollment	NYS DOE
<i>Private & Parochial Elementary and Secondary Schools</i>						
11106	56	ALPHA FUNDAMENTAL PRESCHOOL	218-30 Hempstead Ave	Elementary School - Private/Parochial	42 Enrollment	NYS DOE
12750	5	CAMBRIA CENTER FOR GIFTED CHIL	233-10 Linden Blvd	Elementary School - Private/Parochial	300 Enrollment	NYS DOE
12967	17	CARE AND LOVE DAY CARE CENTER	228-23 Merrick Blvd	Elementary School - Private/Parochial	55 Enrollment	NYS DOE
13611	5	CHRIST LUTHERAN SCHOOL	248-01 Francis Lewis Blvd	Elementary School - Private/Parochial	63 Enrollment	NYS DOE
10947	30	ELISHAMA CHILDREN'S PREP SCHOO	206-18 Hollis Ave	Elementary School - Private/Parochial	81 Enrollment	NYS DOE
10773	10	GRACE LUTHERAN DAY SCHOOL	100-05 Springfield Blvd	Elementary School - Private/Parochial	195 Enrollment	NYS DOE
10571	1	INCARNATION SCHOOL	89-15 Frncs Lewis Blvd	Elementary School - Private/Parochial	440 Enrollment	NYS DOE
10789	271	KIDS FOR THE FUTURE ELEM, INC.	220-28 Jamaica Ave	Elementary School - Private/Parochial	212 Enrollment	NYS DOE
13169	26	LINDEN SEVENTH-DAY ADVENTIST E	137-01 228 St	Elementary School - Private/Parochial	162 Enrollment	NYS DOE
8680	76	NORTH SIDE SCHOOL	263-10 Union Turnpike	Elementary School - Private/Parochial	64 Enrollment	NYS DOE
10704	20	OUR LADY OF LOURDES SCHOOL	92-80 220 St	Elementary School - Private/Parochial	484 Enrollment	NYS DOE
8695	60	OUR LADY OF THE SNOWS SCHOOL	79-33 258 St	Elementary School - Private/Parochial	520 Enrollment	NYS DOE
11331	1	REVEALED WORD CHRISTIAN SCHO	230-01 Linden Blvd	Elementary School - Private/Parochial	80 Enrollment	NYS DOE
11284	1	SACRED HEART SCHOOL	115-50 221 St	Elementary School - Private/Parochial	337 Enrollment	NYS DOE
13235	1	SAINT CLARE SCHOOL	137-25 Brookville Blvd	Elementary School - Private/Parochial	496 Enrollment	NYS DOE
8637	6	SAINT GREGORY THE GREAT SCHOO	244-44 87 Ave	Elementary School - Private/Parochial	458 Enrollment	NYS DOE
10762	1	SAINT JOSEPH'S PARISH DAY SCHOO	217-55 100 Ave	Elementary School - Private/Parochial	233 Enrollment	NYS DOE
13640	1	SAINT PIUS X SCHOOL	147-65 249 St	Elementary School - Private/Parochial	185 Enrollment	NYS DOE
11108	9	SS. JOACHIM & ANNE SCHOOL	218-19 105 Ave	Elementary School - Private/Parochial	515 Enrollment	NYS DOE
8691	6	YESHIVA HAR TORAH	254-04 Union Turnpike	Elementary School - Private/Parochial	359 Enrollment	NYS DOE

**Selected Facilities and Program Sites
In New York City, 2002-2005**

QUEENS COMMUNITY DISTRICT 13

<u>Block</u>	<u>Lot</u>	<u>Facility Name</u>	<u>Facility Address</u>	<u>Facility Type</u>	<u>Capacity</u>	<u>Oversight Agency</u>
<i>Private & Parochial Elementary and Secondary Schools</i>						
10759	136	BETHEL CHRISTIAN ACADEMY	215-32 Jamaica Ave	K-12 School - Private/Parochial	299 Enrollment	NYS DOE
7870	1	CREEDMOOR PSYCHIATRIC CENTER	80-45 Winchester Blvd	Special/Other School - Private/Parochial	10 Enrollment	NYS DOE
13019	10	MARTIN DE PORRES SCHOOL FOR EX	136-25 218 St	Special/Other School - Private/Parochial	304 Enrollment	NYS DOE
8401	1	QUEENS CHILDREN'S PSYCHIATRIC C	74-03 Commonwealth Blvd	Special/Other School - Private/Parochial	68 Enrollment	NYS DOE
13102	16	CHRISTOPHER ROBIN ACADEMY	222-16 Merrick Blvd	Special/Other School - Private/Parochial	173 Enrollment	NYS DOE

RECREATIONAL AND CULTURAL FACILITIES

Libraries and Cultural Institutions

8604	85	BELLEROSE LIBRARY	250-02 Hillside Ave	Public Library - Branch	293354 Annual Circ.	QBPL
12737	61	CAMBRIA HEIGHTS LIBRARY	220-20 Linden Blvd	Public Library - Branch	100222 Annual Circ.	QBPL
8693	10	GLEN OAKS LIBRARY	256-04 Union Turnpike	Public Library - Branch	210615 Annual Circ.	QBPL
13105	7	LAURELTON LIBRARY	134-26 225 St	Public Library - Branch	158193 Annual Circ.	QBPL
10621	12	QUEENS VILLAGE LIBRARY	94-11 217 St	Public Library - Branch	199074 Annual Circ.	QBPL
13549	7	ROSEDALE LIBRARY	144-20 243 St	Public Library - Branch	114390 Annual Circ.	QBPL

Parks

ALLEY PARK (ATHLETIC)	Grand Central Pkwy, Union Tpke, Winc	Park/Playground - NYC	30.5 Acres	NYC DPR
BROOKVILLE PARK	149 Ave, 235 St, Brookville Blvd, S Con	Park/Playground - NYC	89.946 Acres	NYC DPR
CREEDMOOR FARM PARK	Little Neck Pkwy, Commonwealth Blvd,	Park/Playground - NYC	47.65 Acres	NYC DPR
FREDERICK CABBELL PARK	Francis Lewis Blvd, 120 Ave and 121 A	Park/Playground - NYC	4.635 Acres	NYC DPR
HEMPSTEAD PLAYGROUND	225 St & 104 Ave	Park/Playground - NYC	7.064 Acres	NYC DPR
IDLEWILD PARK	Rockaway Blvd, Springfield Blvd, 149 A	Park/Playground - NYC	158.672 Acres	NYC DPR
JACK BREININGER PARK	Braddock Ave & 240 St	Park/Playground - NYC	3.4 Acres	NYC DPR
JERRY M TENNEY PARK	74 Ave & 260 St	Park/Playground - NYC	2.948 Acres	NYC DPR
JHS 172 PLGD (HILLSIDE)	82 Ave, 256 to 257 Sts	Park/Playground - NYC	1.16 Acres	NYC DPR
JHS 231 PLGD (SPRINGFIELD)	Springfield Blvd, 145 Rd, Arthur St	Park/Playground - NYC	1.045 Acres	NYC DPR
LAURELTON GARDENS	237 St, 130 Ave	Park/Playground - NYC	NA	NYC DPR
LAURELTON PLAYGROUND	Brookville Blvd, S/O 136 Ave	Park/Playground - NYC	1.785 Acres	NYC DPR
PLAYGROUND (MENTONE)	Southern Pkwy, 231 to 234 Sts	Park/Playground - NYC	1.102 Acres	NYC DPR

**Selected Facilities and Program Sites
In New York City, 2002-2005**

QUEENS COMMUNITY DISTRICT 13

<u>Block</u>	<u>Lot</u>	<u>Facility Name</u>	<u>Facility Address</u>	<u>Facility Type</u>	<u>Capacity</u>	<u>Oversight Agency</u>
<i>Parks</i>						
		PS 115 PLGD (80 AVE)	80 Ave, 261 & 262 Sts	Park/Playground - NYC	1.35 Acres	NYC DPR
		PS 133 PLGD (BELLEROSE)	85 Ave, 248 & 249 Sts	Park/Playground - NYC	1.263 Acres	NYC DPR
		PS 135 PLGD (BELLAIRE)	89 Ave, 207 & 208 Sts	Park/Playground - NYC	1.148 Acres	NYC DPR
		PS 147 PLGD (EAST SPRINGFIELD)	115 Rd Bet 218 & 219 Sts	Park/Playground - NYC	1.561 Acres	NYC DPR
		PS 176 PLAYGROUND	121 Ave & 237 St	Park/Playground - NYC	3.323 Acres	NYC DPR
		PS 18 PLGD (235 COURT)	S/S Hillside Ave, E/o 235 Ct	Park/Playground - NYC	2.709 Acres	NYC DPR
		PS 186 PLAYGROUND	Little Neck Pkwy & 72 Ave	Park/Playground - NYC	2.024 Acres	NYC DPR
		PS 195 PLGD (HOOK CREEK)	149 Rd, Weller Lane, 149 Ave, 253 St	Park/Playground - NYC	1.102 Acres	NYC DPR
		PS 34 PLGD & WAYANDA PARK	Hollis Ave & Robard Lane	Park/Playground - NYC	3.16 Acres	NYC DPR
		SPRINGFIELD PARK	149 Ave, Springfield Blvd, 145 Rd, 148	Park/Playground - NYC	23.543 Acres	NYC DPR
		225TH ST MALLS	225 St, 137 to 141 Aves	Triangle, Strip, Plaza, or Sitting Area - NYC	0.402 Acres	NYC DPR
		FATHER BERNARD J REILLY SQUARE	Winchester Blvd, 93 Ave, 220 St	Triangle, Strip, Plaza, or Sitting Area - NYC	0.03 Acres	NYC DPR
		GREENSTREET	141 Ave Between 224th St & 228th St (1	Triangle, Strip, Plaza, or Sitting Area - NYC	NA	NYC DPR
		LITCHULT SQUARE	Jamaica & Hempstead Aves, 213 St	Triangle, Strip, Plaza, or Sitting Area - NYC	0.074 Acres	NYC DPR
		NAKKS MALLS	110 Ave, 213 to 217 Sts	Triangle, Strip, Plaza, or Sitting Area - NYC	0.185 Acres	NYC DPR
		QUEENS VILLAGE VETERANS PLAZA	Jamaica Ave, Springfield Blvd	Triangle, Strip, Plaza, or Sitting Area - NYC	0.32 Acres	NYC DPR
		HOOK CREEK WILDLIFE SANCTUARY	Rockaway and Brookville Blvds, Hook	Beach, Garden, Natural Area, Other - NYC	11.486 Acres	NYC DPR
		LAURELTON PARKWAY	Sunrise Hwy to Southern State Pkwy	Beach, Garden, Natural Area, Other - NYC	59.56 Acres	NYC DPR
		PUBLIC PLACE (100 ACRES)	Huxley St, Hook Creek Basin, & Rocka	Beach, Garden, Natural Area, Other - NYC	100 Acres	NYC DPR
		GREENSTREET	240th St b/t Union Turnpike & 87th Ave	Joint NYCDOT/DPR Landscaped Area	NA	NYC DOT
		GREENSTREET	N. Conduit & Lefferts Blvd & 150 Ave	Joint NYCDOT/DPR Landscaped Area	NA	NYC DOT
		GREENSTREET	Francis Lewis, Nashville Blvd & 118th S	Joint NYCDOT/DPR Landscaped Area	NA	NYC DOT
		GREENSTREET	Hillside Ave & 84th Rd (N)	Joint NYCDOT/DPR Landscaped Area	NA	NYC DOT
		GREENSTREET	Francis Lewis Boulevard Bet GCP & LI	Joint NYCDOT/DPR Landscaped Area	NA	NYC DOT
		GREENSTREET	239th St b/t Union Turnpike & 87th Ave	Joint NYCDOT/DPR Landscaped Area	NA	NYC DOT
		GREENSTREET	193 St Between Hillside Ave & Jamaica	Joint NYCDOT/DPR Landscaped Area	NA	NYC DOT
		GREENSTREET	Hillside Ave & 84th St (S)	Joint NYCDOT/DPR Landscaped Area	NA	NYC DOT
		GREENSTREET	135 Ave Between 231 St & 234 St	Joint NYCDOT/DPR Landscaped Area	NA	NYC DOT

**Selected Facilities and Program Sites
In New York City, 2002-2005**

QUEENS COMMUNITY DISTRICT 13

<u>Block</u>	<u>Lot</u>	<u>Facility Name</u>	<u>Facility Address</u>	<u>Facility Type</u>	<u>Capacity</u>	<u>Oversight Agency</u>
<i>Parks</i>						
		GREENSTREET	139th Ave Between 224th St & 225th St	Joint NYCDOT/DPR Landscaped Area	NA	NYC DOT
		GREENSTREET	138th Ave Between 224th St & 232nd St	Joint NYCDOT/DPR Landscaped Area	NA	NYC DOT
		GREENSTREET	Springfield Blvd, 114th Rd & 115th Ave	Joint NYCDOT/DPR Landscaped Area	NA	NYC DOT
		GREENSTREET	Springfield Blvd & 115th Ave (W)	Joint NYCDOT/DPR Landscaped Area	NA	NYC DOT
		GREENSTREET	137 Ave Between 231 St & 232 St	Joint NYCDOT/DPR Landscaped Area	NA	NYC DOT
		GREENSTREET	Francis Lewis Blvd & Springfield Blvd	Joint NYCDOT/DPR Landscaped Area	NA	NYC DOT
		GREENSTREET	Francis Lewis Blvd Mall, 130 Avenue #4	Joint NYCDOT/DPR Landscaped Area	0.073 Acres	NYC DOT
		GREENSTREET	Francis Lewis Blvd Mall & 130th Ave (2	Joint NYCDOT/DPR Landscaped Area	NA	NYC DOT
		GREENSTREET	Langdale St & 271st St	Joint NYCDOT/DPR Landscaped Area	NA	NYC DOT
		GREENSTREET	Cross-Island Pkwy, 81st Av & 244th St	Joint NYCDOT/DPR Landscaped Area	NA	NYC DOT
		GREENSTREET	Cross Island Pkwy & 231st St & 115 Av	Joint NYCDOT/DPR Landscaped Area	NA	NYC DOT
		GREENSTREET	Francis Lewis Blvd, 130 Avenue	Joint NYCDOT/DPR Landscaped Area	NA	NYC DOT
		GREENSTREET	Lakeville Road, Hewlett Street, 77th Ave	Joint NYCDOT/DPR Landscaped Area	0.016 Acres	NYC DOT
		GREENSTREET	Commonwealth Blvd, 244th St & 80th R	Joint NYCDOT/DPR Landscaped Area	NA	NYC DOT
		GREENSTREET	Francis Lewis Blvd, 231 St	Joint NYCDOT/DPR Landscaped Area	NA	NYC DOT
		HOLLIS COURT MALLS	Hollis Court Blvd, Jamaica to Hillside A	Joint NYCDOT/DPR Landscaped Area	NA	NYC DOT
		HOOK CREEK - FIELD OF DREAMS	246 St, North Conduit Avenue	Joint NYCDOT/DPR Landscaped Area	NA	NYC DOT
		MALLS	211 St, 99 to Hollis Aves	Joint NYCDOT/DPR Landscaped Area	NA	NYC DOT
		STEIN-GOLDIE TRIANGLE	267 Street, Union Turnpike	Joint NYCDOT/DPR Landscaped Area	NA	NYC DOT
		VETERANS SQUARE	Francis Lewis Blvd, South Conduit Aven	Joint NYCDOT/DPR Landscaped Area	NA	NYC DOT

PUBLIC SAFETY AND CRIMINAL JUSTICE FACILITIES

10737	1	105TH PRECINCT	92-08 222 St	NYC Police Station	NA	NYPD
7870	1	NARCOTIC BOROUGH QUEENS	80-45 Winchester Blvd	Other NYPD Facility	NA	NYPD
8691	13	ENGINE 251	254-20 Union Turnpike	NYC Fire House	NA	FDNY
10770	23	ENGINE 304 LADDER 162	218-44 97 Ave	NYC Fire House	NA	FDNY
13361	200	ENGINE 311 LADDER 158	145-50 Springfield Blvd	NYC Fire House	NA	FDNY

**Selected Facilities and Program Sites
In New York City, 2002-2005**

QUEENS COMMUNITY DISTRICT 13

<u>Block</u>	<u>Lot</u>	<u>Facility Name</u>	<u>Facility Address</u>	<u>Facility Type</u>	<u>Capacity</u>	<u>Oversight Agency</u>
13538	15	ENGINE 314	142-04 Brookville Blvd	NYC Fire House	NA	FDNY

HOSPITALS, NURSING HOMES, AND AMBULATORY PROGRAMS

Nursing Homes and Hospital Inpatient Units

8677	61	NEW GLEN OAKS NURSING HOME	260-01 79 Ave	Residential Health Care Facility	60 Beds	NYS DOH
8520	175	PARKER JEWISH INST FOR HLTH CAR	271-11 76 Ave	Residential Health Care Facility	527 Beds	NYS DOH
11198	50	QUEEN OF PEACE RESIDENCE	110-30 221 St	Residential Health Care Facility	53 Beds	NYS DOH
10670	35	WINDSOR PARK NURSING HOME	212-40 Hillside Ave	Residential Health Care Facility	70 Beds	NYS DOH
8520	2	LONG ISLAND JEWISH MEDICAL CTR	270-05 76 Ave	Hospital	827 Beds	NYS DOH

Ambulatory Facilities and Programs

8766	1	CENTER FOR REHABILITATION, INC	254-05 Hillside Ave	Free Standing Health Center	NA	NYS DOH
8520	175	PARKER DIAGNOSTIC AND TREATME	271-11 76 Ave	Free Standing Health Center	NA	NYS DOH
10726	52	QUALITY MOBILE CARE	220-05 94 Drive	Free Standing Health Center	NA	NYS DOH
10789	248	HILLSIDE EASTERN QUEENS CLINIC	96-09 Springfield Blvd	Hospital Affiliated Health Center	NA	NYS DOH
8520	2	SCHNEIDER CHILDREN'S HOSPITAL O	269-01 76 Ave	Hospital Affiliated Health Center	NA	NYS DOH
13313	33	FRIENDSHIP GERIATRIC CLINIC	145-46 Farmers Blvd	HHC Extension Clinic	NA	NYS DOH

ALCOHOLISM & SUBSTANCE ABUSE SERVICES

Residential

7870	1	CREEDMOOR ADDICTION TREATME	80-45 Winchester Blvd	Inpatient Rehabilitation - Alcoholism	26 Beds	NYS OMH
------	---	-----------------------------	-----------------------	---------------------------------------	---------	---------

Non-Residential

13381	1	CAMELOT OF STATEN ISLAND-MED S	175-15 Rockaway Blvd	Med Supervised Outp Svc - Alcohol/Sub Abuse	60 Cert. Caseload	NYS OASAS
8520	2	LIJ MED CTR- NEW HYDE PK MED SU	270-05 76 Ave	Med Supervised Outp Svc - Alcohol/Sub Abuse	75 Cert. Caseload	NYS OASAS
13380	11	PHOENIX PROGRAMS OF NY - MED S	175-21 149 Ave	Med Supervised Outp Svc - Alcohol/Sub Abuse	10 Cert. Caseload	NYS OASAS
8520	2	LI JEWISH MEDICAL CENTER - MMTP	270-05 76 Ave	Methadone Treatment Clinic - Sub Abuse	325 Cert. Caseload	NYS OASAS

MENTAL HEALTH SERVICES

**Selected Facilities and Program Sites
In New York City, 2002-2005**

QUEENS COMMUNITY DISTRICT 13

<u>Block</u>	<u>Lot</u>	<u>Facility Name</u>	<u>Facility Address</u>	<u>Facility Type</u>	<u>Capacity</u>	<u>Oversight Agency</u>
Residential						
10769	41	ST. CHRIS/OTTILIE CHILDREN'S C.R.	218-41 99 Ave	Community Based Residence - Mental Health	9 Beds	NYC ACS
13045	10	APPLE A.C.T. COMMUNITY RESIDENC	218-04 140 Ave	Community-Based Residence - Mental Health	20 Beds	NYS OMH
7870	1	BFFY ROSE HOUSE RCCA	80-45 Winchester Blvd	Community-Based Residence - Mental Health	168 Beds	NYS OMH
7870	1	CREEDMOOR OAK HOUSE COMMUNI	80-45 Winchester Blvd	Community-Based Residence - Mental Health	24 Beds	NYS OMH
7870	1	OMNI III	80-45 Winchester Blvd	Community-Based Residence - Mental Health	24 Beds	NYS OMH
7880	15	TSI - HOPE HOUSE I	235-61 Hillside Ave	Community-Based Residence - Mental Health	25 Beds	NYS OMH
7880	15	TSI PHASE I SUPERVISED COMMUNIT	235-61 Hillside Ave	Community-Based Residence - Mental Health	40 Beds	NYS OMH
7870	1	TSI PHASE IIA COTTAGE PROGRAM	80-45 Winchester Bl	Community-Based Residence - Mental Health	16 Beds	NYS OMH
7870	1	CREEDMOOR CRISIS RESIDENCE	80-45 Winchester Blvd	Community-Based Residence - Mental Health	24 Beds	NYS OMH
8520	2	LIJ HILLSIDE SCHNEIDER CHILDREN'	269-01 76 Ave	Hospital Based Inpatient Care - Mental Health	15 Beds	NYS OMH
8520	2	LIJ MEDICAL CENTER PSYCHIATRIC I	75-59 263 St	Hospital Based Inpatient Care - Mental Health	223 Beds	NYS OMH
7870	1	CREEDMOOR PSYCHIATRIC CENTER	80-45 Winchester Blvd	State Operated Psychiatric Center	450 Beds	NYS OMH
8401	1	QUEENS CHILDREN'S PSYCHIATRIC C	74-03 Commonwealth Blvd	State Operated Psychiatric Center	83 Beds	NYS OMH
Non-Residential						
7870	1	CPC QUEENS VILLAGE OUTPATIENT	80-45 Winchester Blvd	Mental Health Clinic/Day Treatment	NA	NYS OMH
8520	2	LIJ HILLSIDE HOSPITAL AMBULATOR	75-59 263 St	Mental Health Clinic/Day Treatment	NA	NYS OMH
10789	276	LIJ HILLSIDE HOSPITAL EASTERN QU	221-10 Jamaica Ave	Mental Health Clinic/Day Treatment	NA	NYS OMH
8401	1	QCPC MID-CHILDHOOD CLINIC	74-03 Commonwealth Blvd	Mental Health Clinic/Day Treatment	NA	NYS OMH
8520	2	SCHNEIDER CHILDREN'S HOSP. CHIL	75-29 263 St	Mental Health Clinic/Day Treatment	NA	NYS OMH
8401	1	ARLENE WOLF DAY TREATMENT PR	74-03 Commonwealth Blvd	Mental Health Clinic/Day Treatment	52 Cert. Caseload	NYS OMH
7880	200	LIFELINE CENTER FOR CHILD DEVEL	80-09 Winchester Blvd	Mental Health Clinic/Day Treatment	176 Cert. Caseload	NYS OMH
8520	2	LIJ HILLSIDE HOSP. CHILD & ADOL.D	75-59 263 St	Mental Health Clinic/Day Treatment	39 Cert. Caseload	NYS OMH
8401	1	QCPC/EARLY CHILDHOOD DAY TREA	7403 Commonwealth Blvd	Mental Health Clinic/Day Treatment	80 Cert. Caseload	NYS OMH
7870	1	CONTINUING DAY TREATMENT PRO	80-45 Winchester Blvd	Mental Health Clinic/Day Treatment	80 Cert. Caseload	NYS OMH
8520	2	LIJ HILLSIDE HOSPITAL ADULT DAY	75-59 263 St	Mental Health Clinic/Day Treatment	120 Cert. Caseload	NYS OMH
10725	94	NYPCC QUEENS VILLAGE CONTINUI	220-05 Jamaica Ave	Mental Health Clinic/Day Treatment	83 Cert. Caseload	NYS OMH
8520	2	LIJ ADULT PARTIAL HOSPITALIZATI	75-59 263 St	Hospital Based Inpatient Care - Mental Health	19 Cert. Caseload	NYS OMH

**Selected Facilities and Program Sites
In New York City, 2002-2005**

QUEENS COMMUNITY DISTRICT 13

<u>Block</u>	<u>Lot</u>	<u>Facility Name</u>	<u>Facility Address</u>	<u>Facility Type</u>	<u>Capacity</u>	<u>Oversight Agency</u>
MENTAL RETARDATION & DEVELOPMENTAL DISABILITIES SERVICES						
<i>Residential</i>						
11108	27	BUILDERS FOR FAMILY & YOUTH	218-20 104 Ave	Intermediate Care Facility - MR/DD	10 Beds	NYS OMRDD
13312	21	BUILDERS FOR FAMILY & YOUTH	145-16 Farmers Blvd	Intermediate Care Facility - MR/DD	14 Beds	NYS OMRDD
13235	1	MERCY HOME FOR CHILDREN	137-21 Brookville Blvd	Intermediate Care Facility - MR/DD	20 Beds	NYS OMRDD
13680	103	PROFESSIONAL SERVICE CENTER	258-02 Craft Ave	Intermediate Care Facility - MR/DD	9 Beds	NYS OMRDD
13711	44	PROFESSIONAL SERVICE CENTER	230-31 148 Ave	Intermediate Care Facility - MR/DD	10 Beds	NYS OMRDD
8401	620	UCPA OF QUEENS, INC.	249-14 Grand Central Parkway	Intermediate Care Facility - MR/DD	10 Beds	NYS OMRDD
8401	620	UCPA OF QUEENS, INC.	249-10 Grand Central Parkway	Intermediate Care Facility - MR/DD	10 Beds	NYS OMRDD
8401	620	UCPA OF QUEENS, INC.	249-08 Grand Central Parkway	Intermediate Care Facility - MR/DD	10 Beds	NYS OMRDD
8401	620	UCPA OF QUEENS, INC.	249-14a Grand Central Parkway	Intermediate Care Facility - MR/DD	10 Beds	NYS OMRDD
8401	620	UCPA OF QUEENS, INC.	249-12 Grand Central Parkway	Intermediate Care Facility - MR/DD	10 Beds	NYS OMRDD
11108	27	BUILDERS FOR FAMILY & YOUTH	218-20 104 Ave	Community Residence - MR/DD	5 Beds	NYS OMRDD
7954	1	ASSN. FOR HELP OF RETARD. CHILD.	233-04 87 Ave	Residential Alternative - MR/DD	6 Beds	NYS OMRDD
12743	15	CENTER FOR FAMILY SUPPORT, INC.	117-22 227 St	Residential Alternative - MR/DD	6 Beds	NYS OMRDD
13275	5	EIHAB HUMAN SERVICES	144-31 175 St	Residential Alternative - MR/DD	7 Beds	NYS OMRDD
13434	101	EIHAB HUMAN SERVICES	220-28 147 Ave	Residential Alternative - MR/DD	6 Beds	NYS OMRDD
10608	25	GENERAL HUMAN OUTREACH IN TH	94-06 216 St	Residential Alternative - MR/DD	4 Beds	NYS OMRDD
8653	17	LIFESPIRE	247-22 88 Rd	Residential Alternative - MR/DD	6 Beds	NYS OMRDD
13110	35	LIFESPIRE	136-04 220 St	Residential Alternative - MR/DD	4 Beds	NYS OMRDD
13110	35	LIFESPIRE	136-04 220 St	Residential Alternative - MR/DD	4 Beds	NYS OMRDD
13604	6	LIFESPIRE	141-55 256 St	Residential Alternative - MR/DD	6 Beds	NYS OMRDD
13505	45	QUEENS DDSO	225-04 South Conduit Ave	Residential Alternative - MR/DD	4 Beds	NYS OMRDD
13465	35	QUEENS SVCES. FOR AUTISTIC CITIZ	230-48 146 Ave	Residential Alternative - MR/DD	7 Beds	NYS OMRDD
8552	10	UCPA OF QUEENS, INC.	269-18 77 Ave	Residential Alternative - MR/DD	8 Beds	NYS OMRDD
8593	11	UCPA OF QUEENS, INC.	83-14 251 St	Residential Alternative - MR/DD	6 Beds	NYS OMRDD
10724	24	UNIQUE PEOPLE SERVICES, INC.	94-50 220 St	Residential Alternative - MR/DD	6 Beds	NYS OMRDD
12856	21	WORKING ORGAN. FOR RETARDED C	229-44 129 Ave	Residential Alternative - MR/DD	6 Beds	NYS OMRDD
13740	28	WORKING ORGAN. FOR RETARDED C	147-24 Edgewood St	Residential Alternative - MR/DD	6 Beds	NYS OMRDD

**Selected Facilities and Program Sites
In New York City, 2002-2005**

QUEENS COMMUNITY DISTRICT 13

<u>Block</u>	<u>Lot</u>	<u>Facility Name</u>	<u>Facility Address</u>	<u>Facility Type</u>	<u>Capacity</u>	<u>Oversight Agency</u>
<i>Non-Residential</i>						
8401	620	UCP OF QUEENS, INC.	249-16 Grand Central Parkway	Clinic/Day Treatment - MR/DD	150 Cert. Caseload	NYS OMRDD
7870	1	GATEWAY COUNSELING CENTER, IN	80-45 Winchester Blvd	Day Training/Preschool Program - MR/DD	30 Cert. Caseload	NYS OMRDD
8000	6	LIFESPIRE, INC	237-25 Jamaica Ave	Day Training/Preschool Program - MR/DD	25 Cert. Caseload	NYS OMRDD
10719	35	WORC	219-39 91 Rd	Day Training/Preschool Program - MR/DD	25 Cert. Caseload	NYS OMRDD

DAYCARE AND RESIDENTIAL FACILITIES FOR CHILDREN

<i>Residential</i>						
13709	37	148TH AVENUE DRC/GR HOME	229-03 148 Ave	Group Foster Home	10 Beds	NYC ACS
13030	54	ANCHOR DRC/GROUP HOME	217-04 137 Ave	Group Foster Home	10 Beds	NYC ACS
13284	80	ST. VINCENTS SERVICES	167-27 145 Ave	Group Foster Home	12 Beds	NYC ACS
11107	31	103RD AVENUE AOBH	218-14 103 Ave	Agency Operated Boarding Home	5 Beds	NYC ACS
10616	27	CENTER (SAFE SPACE) AOBH	93-48 Vanderveer St	Agency Operated Boarding Home	6 Beds	NYC ACS
11164	45	CENTER (SAFE SPACE) AOBH	219-04 104 Ave	Agency Operated Boarding Home	6 Beds	NYC ACS
13104	34	CGSNY	222-16 134 Road	Agency Operated Boarding Home	6 Beds	NYC ACS
8505	38	GLEN OAKS AOBH	76-04 Little Neck Parkway	Agency Operated Boarding Home	6 Beds	NYC ACS
10550	67	MORTY GOLD HOUSE (2)	93-48 210 St	Agency Operated Boarding Home	6 Beds	NYC ACS
10546	20	ST CHRIS/OTTLIE/AOBH #1	94-11 Hollis Court Blvd	Agency Operated Boarding Home	6 Beds	NYC ACS
11173	46	ST CHRIS/OTTLIE/AOBH #2	223-07 107 Ave	Agency Operated Boarding Home	6 Beds	NYC ACS
11088	20	ST CHRIS/OTTLIE/AOBH #3	213-12 102 Ave	Agency Operated Boarding Home	6 Beds	NYC ACS
10769	41	ST. CHRIS/OTTLIE	218-41 99 Ave	Agency Operated Boarding Home	4 Beds	NYC ACS
<i>Daycare and Headstart Facilities</i>						
10917	29	CHARLES R. DREW DCC	109-45 207 St	Group Day Care - Public	123 Children	NYC DOHM
13030	30	LAURELTON SPRINGFIELD COM DCC	216-02 137 Ave	Group Day Care - Public	60 Children	NYC DOHM
13381	1	SARATOGA FAMILY INN DAY CARE	175-15 Rockaway Blvd	Group Day Care - Public	35 Children	NYC DOHM
10719	35	AABR, INC. N.Y. CHILD LEARNING	219-39 91 Rd	Group Day Care - Private	15 Children	NYC DOHM
11106	56	ALPHA-FUNDAMENTAL PRE-SCHOOL	218-30 Hemstead Ave	Group Day Care - Private	30 Children	NYC DOHM
10769	24	BETHLEHEM CHILD DEVELOPMENT	218-20 98 Ave	Group Day Care - Private	35 Children	NYC DOHM
7870	1	BRIGHT BEGINNING IN QUEENS VILL	80-45 Winchester Blvd	Group Day Care - Private	54 Children	NYC DOHM

**Selected Facilities and Program Sites
In New York City, 2002-2005**

QUEENS COMMUNITY DISTRICT 13

<u>Block</u>	<u>Lot</u>	<u>Facility Name</u>	<u>Facility Address</u>	<u>Facility Type</u>	<u>Capacity</u>	<u>Oversight Agency</u>
<i>Daycare and Headstart Facilities</i>						
12750	5	CAMBRIA CTR FOR THE GIFTED	233-10 Linden Blvd	Group Day Care - Private	102 Children	NYC DOHM
12738	111	CAMBRIA HEIGHTS CHRISTIAN ACA	221-02 Linden Blvd	Group Day Care - Private	20 Children	NYC DOHM
12967	17	CARE & LOVE CENTER, INC.	228-23 Merrick Blvd	Group Day Care - Private	55 Children	NYC DOHM
11231	81	CAROL'S EDUCARE CCC	113-15 Springfield Blvd	Group Day Care - Private	127 Children	NYC DOHM
7955	300	CROSS ISLAND YMCA ECC	238-10 Hillside Ave	Group Day Care - Private	99 Children	NYC DOHM
13235	1	DEVOTED PARENTS ASSN, INC	137-25 Brookville Blvd	Group Day Care - Private	84 Children	NYC DOHM
10679	26	EARLY INTERVENTION CENTER OF Q	219-10 Hillside Ave	Group Day Care - Private	77 Children	NYC DOHM
10947	30	ELISHAMA CHILDREN'S PREP SCHOO	206-12 Hollis Ave	Group Day Care - Private	72 Children	NYC DOHM
11325	6	FIRST FAITH BAPTIST CHURCH ACCE	224-07 Linden Blvd	Group Day Care - Private	20 Children	NYC DOHM
13310	51	FIRST STAR DAY CARE LEARNING CE	145-88 Guy R. Brewer Blvd	Group Day Care - Private	45 Children	NYC DOHM
12742	61	HELPING HANDS DAY CARE	225-16 Linden Blvd	Group Day Care - Private	26 Children	NYC DOHM
13312	15	HERBERT BIRCH ECC	145-02 Farmers Blvd	Group Day Care - Private	100 Children	NYC DOHM
13207	38	HERMY'S DAY CARE	243-24 Merrick Blvd	Group Day Care - Private	25 Children	NYC DOHM
13206	15	HERMY'S KIDDY CORNER	133-55 242 St	Group Day Care - Private	19 Children	NYC DOHM
7914	2	HILLTOP EARLY CHILDHOOD	221-25a Manor Rd	Group Day Care - Private	19 Children	NYC DOHM
8627	1	HOLY TRINITY LUTHERAN CHURCH	246-55 87 Ave	Group Day Care - Private	20 Children	NYC DOHM
10771	17	JEN - LYN'S DAY CARE/KINDERGART	218-14 Jamaica Ave	Group Day Care - Private	25 Children	NYC DOHM
11325	6	JULIASA NURSERY SCHOOL&KINDE	224-03 Linden Blvd	Group Day Care - Private	55 Children	NYC DOHM
8538	31	KESHET PS/YOUNG ISRAEL/NHP	264-15 77 Ave	Group Day Care - Private	10 Children	NYC DOHM
10789	271	KIDS FOR THE FUTURE	220-24 Jamaica Ave	Group Day Care - Private	147 Children	NYC DOHM
13152	35	LAURELTON DAY CARE	141-19 224 St	Group Day Care - Private	71 Children	NYC DOHM
12746	60	LE GRAND ELITE LEARNING LAB UN	229-16 Linden Blvd	Group Day Care - Private	45 Children	NYC DOHM
7880	200	LIFE-LINE CENTER CHILD DEVELOP	80-09 Winchester Blvd	Group Day Care - Private	42 Children	NYC DOHM
12746	60	LIL ONES LEARNING CENTER	229-16 Linden Blvd	Group Day Care - Private	30 Children	NYC DOHM
13198	28	LITTLE FLOWERS ECC	234-10 Merrick Blvd	Group Day Care - Private	15 Children	NYC DOHM
10775	4	LOVE, PEACE&JOY PRE-SCHOOL&KI	220-03 Hempstead Ave	Group Day Care - Private	24 Children	NYC DOHM
10602	34	MAGIC RAINBOW, INC. DBA:TEACHI	212-47 Jamaica Ave	Group Day Care - Private	64 Children	NYC DOHM
13106	1	MIDDLETON'S DAY CARE	225-16 Merrick Blvd	Group Day Care - Private	30 Children	NYC DOHM

**Selected Facilities and Program Sites
In New York City, 2002-2005**

QUEENS COMMUNITY DISTRICT 13

<u>Block</u>	<u>Lot</u>	<u>Facility Name</u>	<u>Facility Address</u>	<u>Facility Type</u>	<u>Capacity</u>	<u>Oversight Agency</u>
<i>Daycare and Headstart Facilities</i>						
13107	18	MIDDLETON'S EARLY LEARNING CE	226-02 Merrick Blvd	Group Day Care - Private	52 Children	NYC DOHM
13502	33	MONA PREP DAY CARE, INC.	144-14 232 St	Group Day Care - Private	15 Children	NYC DOHM
8680	76	NORTH SIDE SCHOOL	263-10 Union Turnpike	Group Day Care - Private	59 Children	NYC DOHM
13612	1	OUR KIDS PLACE, LTD.	247-11 Francis Lewis Blvd	Group Day Care - Private	52 Children	NYC DOHM
13640	1	OUR LITTLE ANGELS DAY CARE	147-65 249 St	Group Day Care - Private	15 Children	NYC DOHM
13256	1	PAULINE BROWN	241-15 North Conduit Ave	Group Day Care - Private	38 Children	NYC DOHM
10546	68	PERFECTION CHILD #2	211-69 Jamaica Ave	Group Day Care - Private	83 Children	NYC DOHM
13462	64	QUEENS COMMUNITY ECC	146-05 228 St	Group Day Care - Private	90 Children	NYC DOHM
10789	248	QUEENS VILLAGE DAY SCHOOL	219-32 Jamaica Ave	Group Day Care - Private	45 Children	NYC DOHM
10789	248	QUEENS VILLAGE DAY SCHOOL ANN	96-07 Springfield Blvd	Group Day Care - Private	15 Children	NYC DOHM
10789	248	QUEENS VILLAGE DAY SCHOOL ANN	96-15 Springfield Blvd	Group Day Care - Private	55 Children	NYC DOHM
10789	248	QUEENS VILLAGE DAY SCHOOL ANN	96-09 Springfield Blvd	Group Day Care - Private	15 Children	NYC DOHM
10789	248	QUEENS VILLAGE DAY SCHOOL ANN	96-13 Springfield Blvd	Group Day Care - Private	20 Children	NYC DOHM
10789	248	QUEENS VILLAGE DAY SCHOOL I/T	96-11 Springfield Blvd	Group Day Care - Private	15 Children	NYC DOHM
10604	30	REACH AND GROW	214-09 Jamaica Ave	Group Day Care - Private	45 Children	NYC DOHM
10633	1	REDEEMER LUTHERAN NURSERY SC	92-10 217 St	Group Day Care - Private	29 Children	NYC DOHM
13563	124	ROSEDALE CHILD DEVELOPMENT CE	241-08 140 Ave	Group Day Care - Private	23 Children	NYC DOHM
10983	23	STEP BY STEP ACADEMY	112-09 Francis Lewis Blvd	Group Day Care - Private	26 Children	NYC DOHM
7940	27	SUNSHINE DEVELOPMENTAL	231-10 Hillside Ave	Group Day Care - Private	86 Children	NYC DOHM
11233	6	THE EARLY CHILDHOOD INSTITUTE	113-53 Springfield Blvd	Group Day Care - Private	20 Children	NYC DOHM
11326	1	THE NURTURING CENTER	225-11 Linden Blvd	Group Day Care - Private	105 Children	NYC DOHM
13599	3	THROOP MEMORIAL DAY CARE CEN	140-17 243 St	Group Day Care - Private	42 Children	NYC DOHM
12967	21	TRACY'S DAY CARE CENTER	228-01 Merrick Blvd	Group Day Care - Private	30 Children	NYC DOHM
11328	6	WONDER KIDS ACADEMY	227-01 Linden Blvd	Group Day Care - Private	28 Children	NYC DOHM
13381	1	EDUCATIONAL ALLIANCE HS/SARAT	175-15 Rockaway Blvd	Head Start Center - Private	15 Children	NYC DOHM
13312	15	HERBERT G. BIRCH HS&UNV PRE-K	145-02 Farmers Blvd	Head Start Center - Private	104 Children	NYC DOHM

FACILITIES FOR SENIORS

**Selected Facilities and Program Sites
In New York City, 2002-2005**

QUEENS COMMUNITY DISTRICT 13

<u>Block</u>	<u>Lot</u>	<u>Facility Name</u>	<u>Facility Address</u>	<u>Facility Type</u>	<u>Capacity</u>	<u>Oversight Agency</u>
11320	34	ALPHA PHI ALPHA SENIOR CENTER	116-02 220 St	Senior Center	2310 Av. Meals/Month	NYC DFTA
13312	15	JSPOA FRIENDSHIP NUTRITION CENT	145-06 Farmers Blvd	Senior Center	2010 Av. Meals/Month	NYC DFTA
12972	67	LAURELTON-ROSEDALE SENIOR CEN	133-21 232nd St	Senior Center	3660 Av. Meals/Month	NYC DFTA
13221	27	ROSEDALE SR CITIZENS CLUB	135-01 Brookville Blvd	Senior Center	2040 Av. Meals/Month	NYC DFTA
7870	1	SNAP OF EASTERN QUEENS	80-45 Winchester Blvd	Senior Center	4530 Av. Meals/Month	NYC DFTA

RESIDENTIAL FACILITIES AND FOOD PROGRAMS FOR ADULTS & FAMILIES

Residential

13381	1	SARATOGA INTERFAITH FAMILY INN	175-15 Rockaway Blvd	Family Homeless Facility - DHS Contracted	255 Family Units	NYC DHS
13307	91	SPRINGFIELD GARDEN RESIDENCE	146-80 Guy R Brewer Blvd	Family Homeless Facility - DHS Contracted	82 Family Units	NYC DHS

Food Programs and Drop-In Centers

13030	30	FIRST PRESBYTERIAN CHURCH OF SP	216-02 137 Ave	Food Pantry	NA	NA
11113	23	HOLLIS AVENUE CONGREGATION CH	211-04 Hollis Ave	Food Pantry	NA	NA
13018	36	HOLY TEMPLE CHURCH INC.	136-25 Springfield Blvd.	Food Pantry	NA	NA
11226	40	JAMAICA SDA CHURCH	225-21 Murdock Ave	Food Pantry	NA	NA
10604	29	JUST SHALL LIVE	214-13 Jamaica Ave	Food Pantry	NA	NA
13169	26	LINDEN SDA CHURCH COMMUNITY S	228-20 137 Ave	Food Pantry	NA	NA
11140	105	MARANATHA BAPTIST CHURCH	112-42 Springfield Blvd	Food Pantry	NA	NA
10704	30	OUR LADY OF LOURDES	92-96 220 St	Food Pantry	NA	NA
13255	15	PARKWAY BAPTIST CHURCH	138-23 Brookville Blvd.	Food Pantry	NA	NA
11029	104	QUEENS TABERNACLE CHURCH	114-70 211 St	Food Pantry	NA	NA
10789	114	QUEENSBORO SDA CHURCH	96-50 222 St	Food Pantry	NA	NA
12971	52	ST. LUKES BAPTIST CHURCH	133-28 232 St	Food Pantry	NA	NA
13303	63	SPRINGFIELD GARDENS SDA CHURC	145-94 176 St	Joint Soup Kitchen & Food Pantry	NA	NA
13673	33	ST. ALBANS GOSPEL ASSEMBLY	257-58 148 Rd	Joint Soup Kitchen & Food Pantry	NA	NA