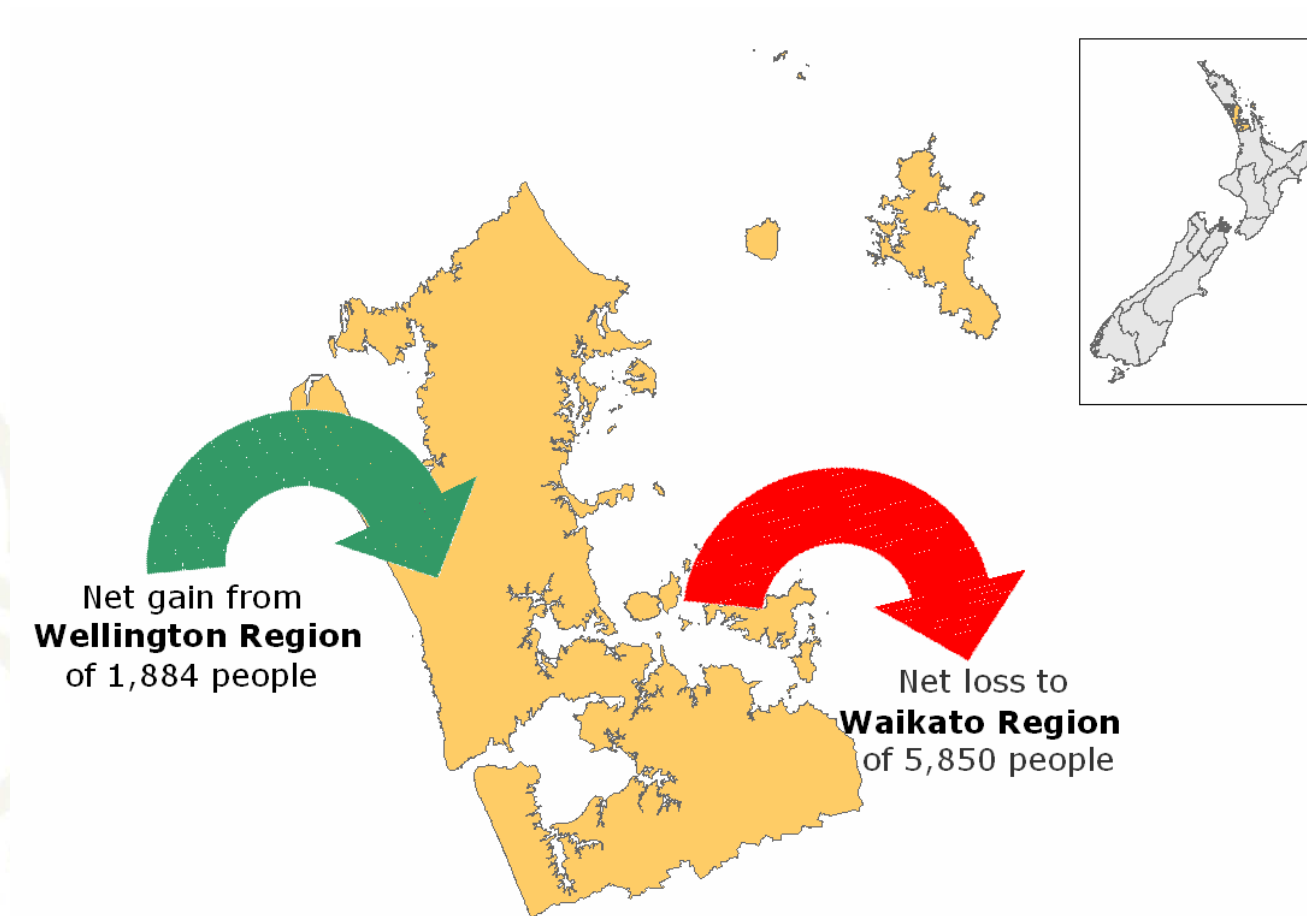


What we look like locally



Net Migration for Auckland Region

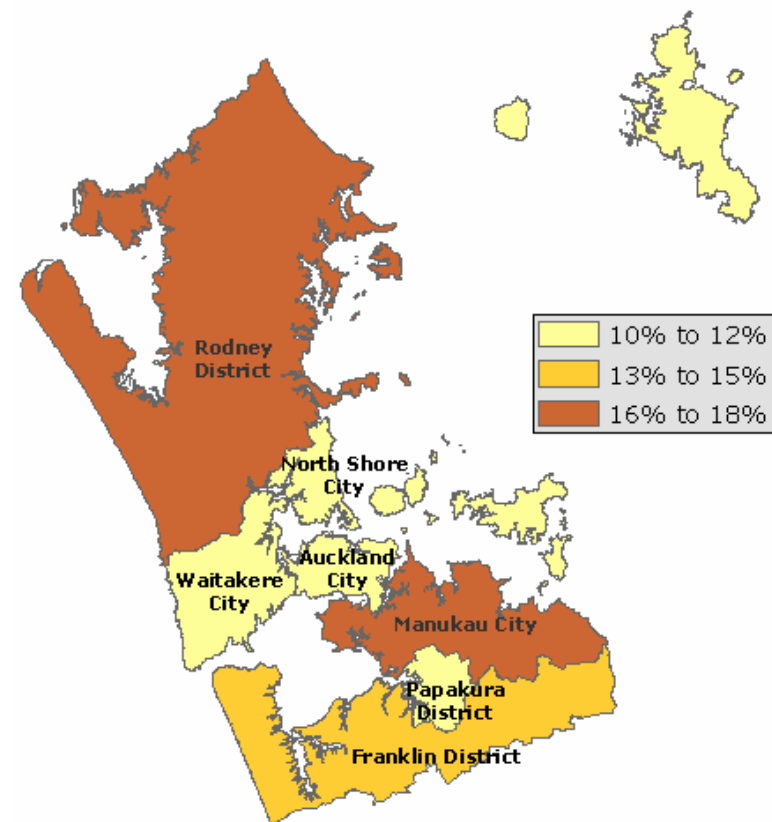


Usually Resident Population

Percentage change from 2001

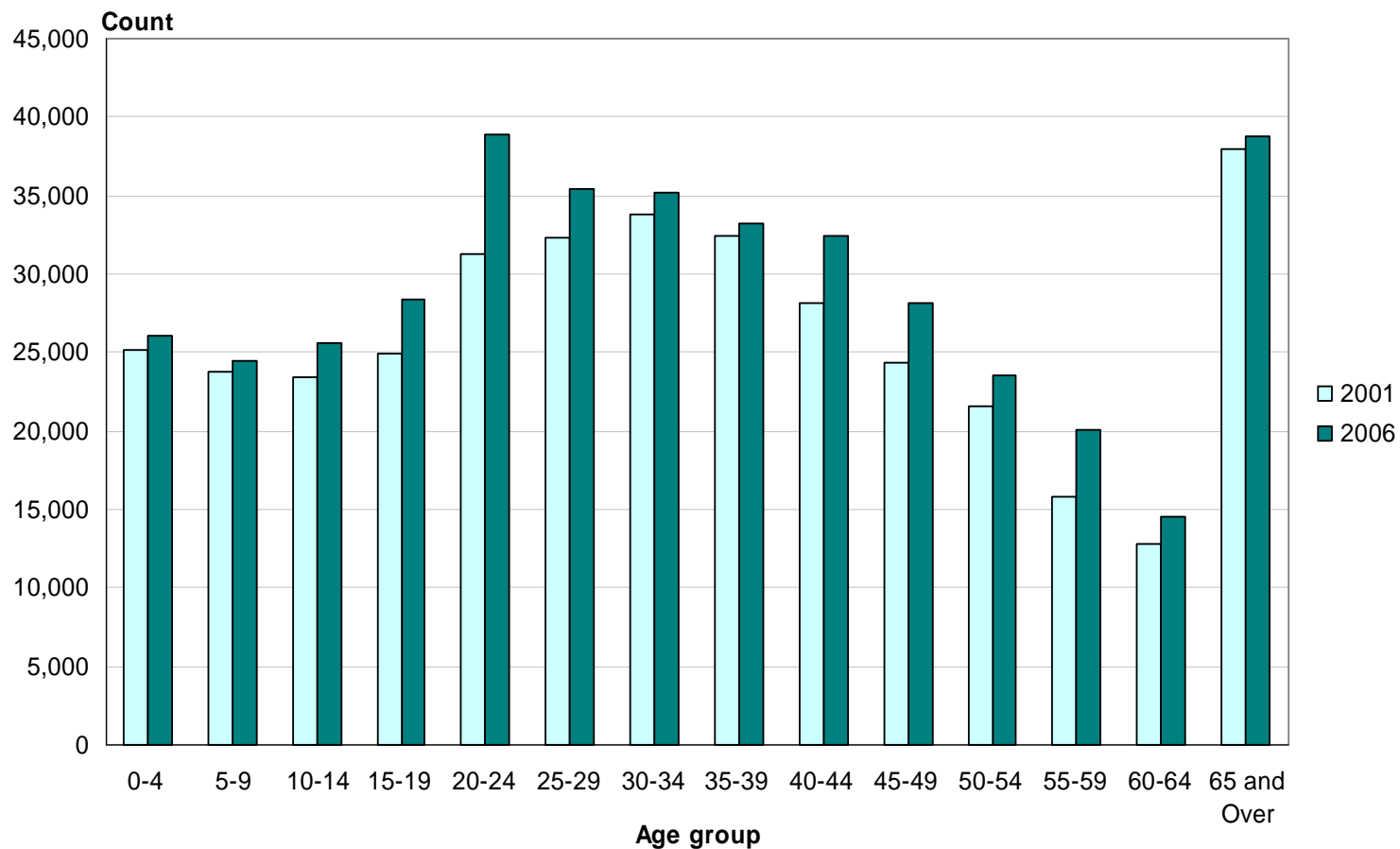
o Auckland Region
1,303,068

o Auckland City
404,658



Age (5 years)

Auckland City, 2001 and 2006 Censuses



Median age for Auckland City 32.7 years

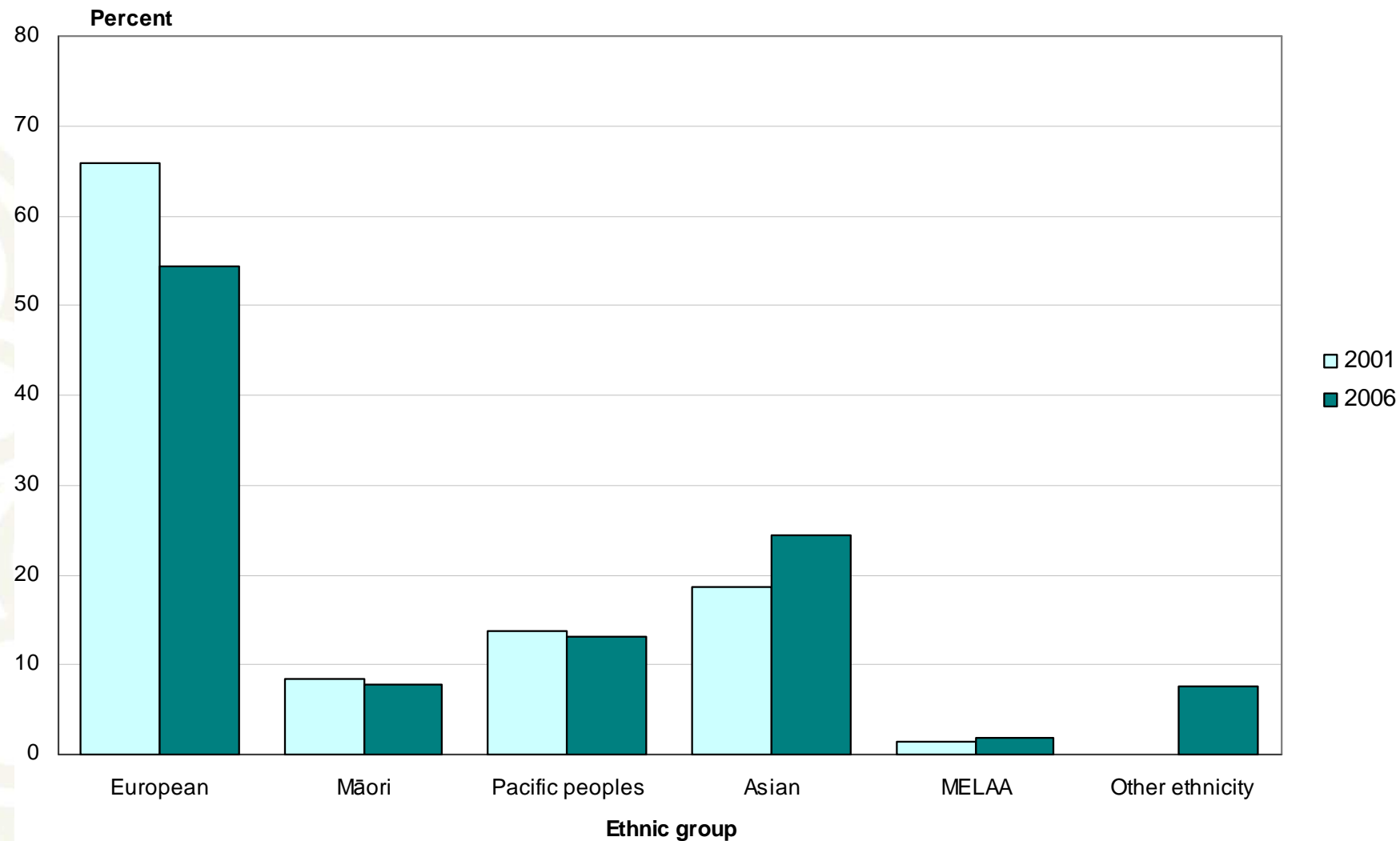
Who needs a holiday programme?

- Number of children under 15 years
 - o Auckland Region 288,576
 - o Auckland City 76,095

	0 - 4 Years	5 - 9 Years	10 - 14 Years	Total
Mt Wellington South	561	492	501	1,551
Waiheke Island	489	483	498	1,467
Otahuhu West	519	423	366	1,308
Glen Innes West	417	441	435	1,296
New Windsor	408	435	450	1,296
Hillsborough West	321	378	585	1,284
Tamaki	450	384	414	1,248

Ethnic Group

Auckland City, 2001 and 2006 Censuses



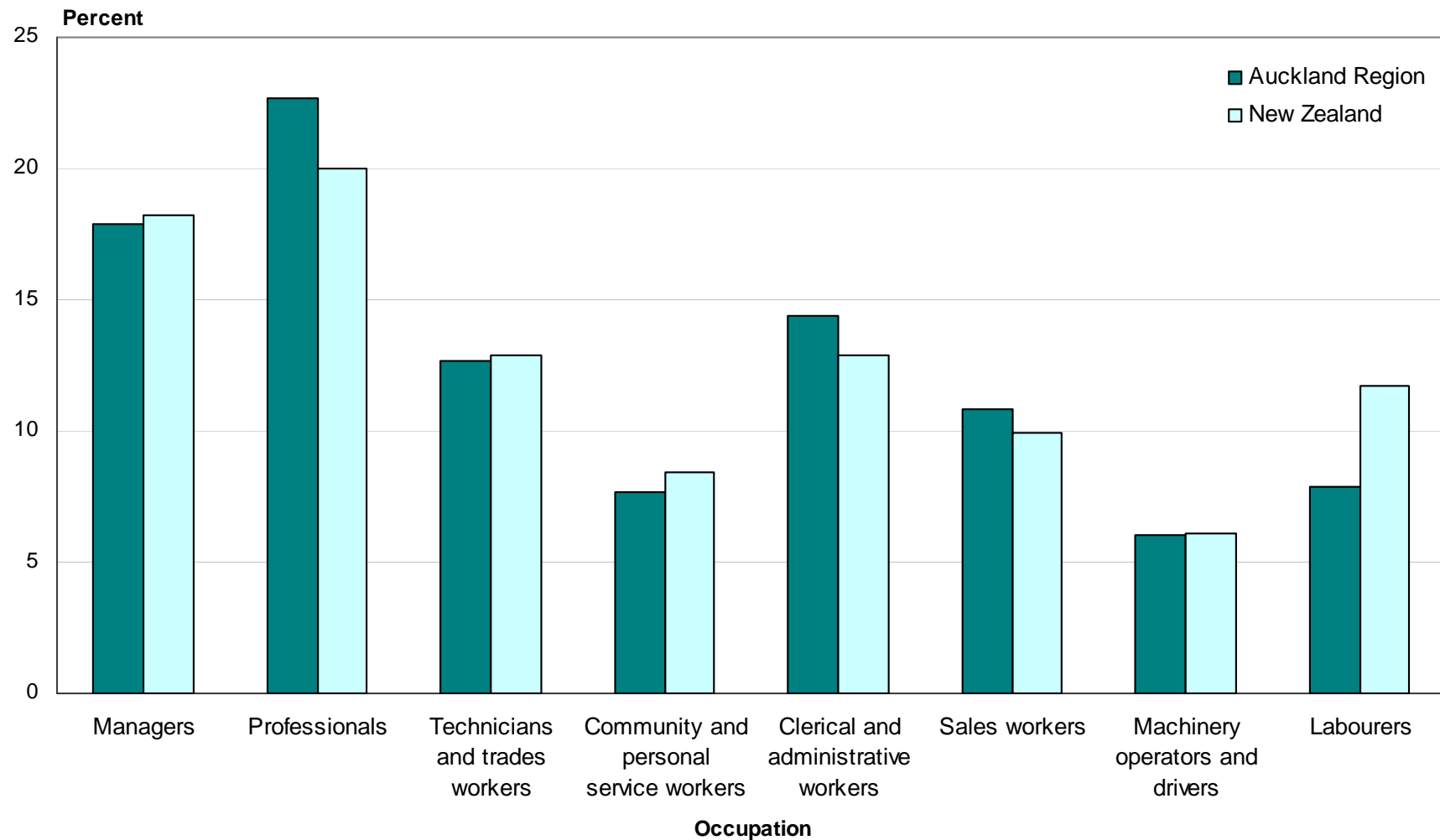
Religious Affiliation (percent)

Auckland Region and New Zealand, 2006 Census

	Region	NZ
Christian (not including Māori Christian)	56.2	58.0
No Religion	34.5	37.1
Māori Christian	1.3	1.9
Hindu	4.0	1.8
Buddhist	2.6	1.5
Islam/Muslim	2.1	1.0
Other Religions	1.0	0.7
Spiritualism and New Age Religions	0.5	0.6
Judaism/Jewish	0.3	0.2

Occupation (ANZSCO)

Auckland Region and New Zealand, 2006 Census



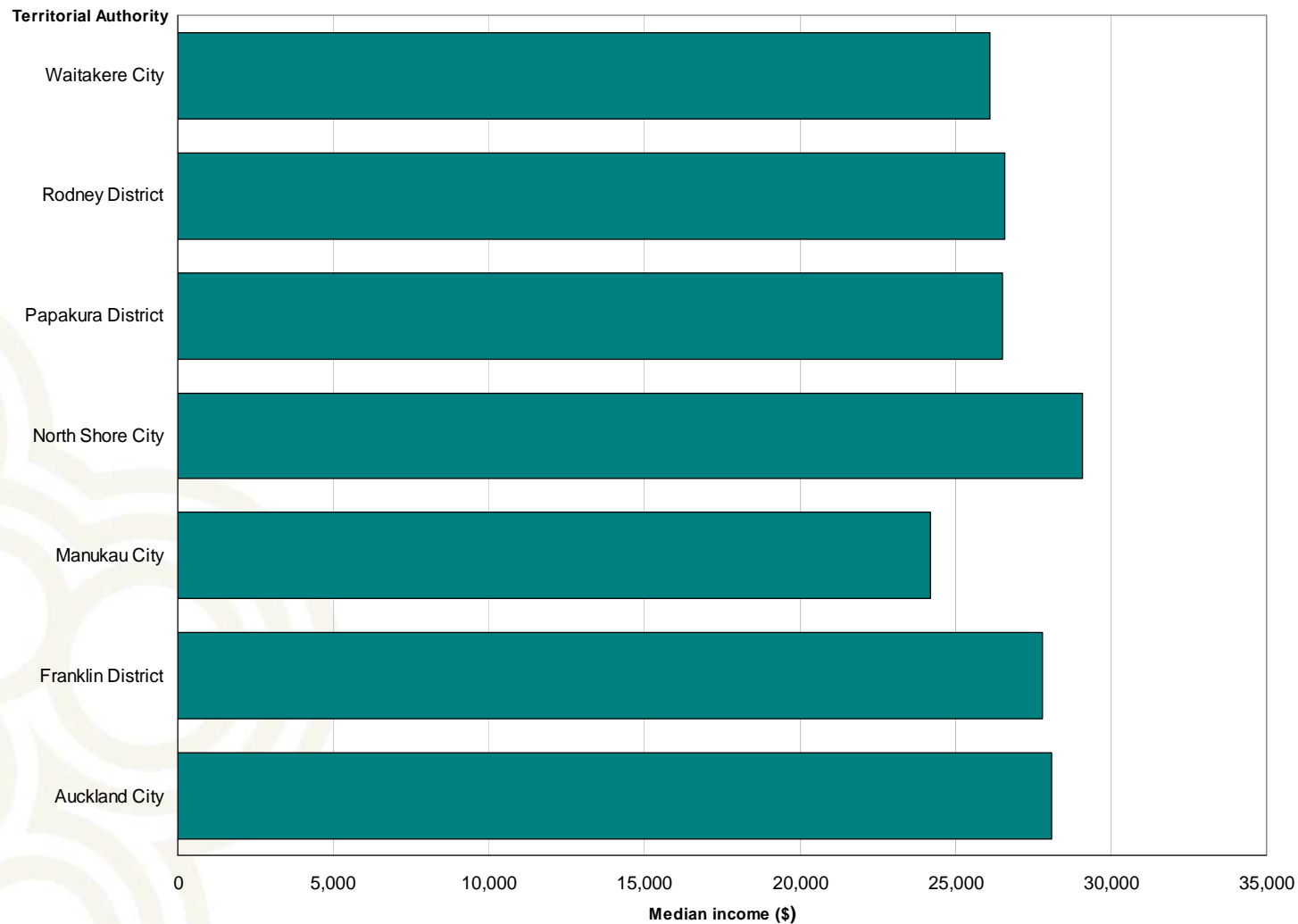
Unpaid Activities

Auckland Region and New Zealand, 2006 Census

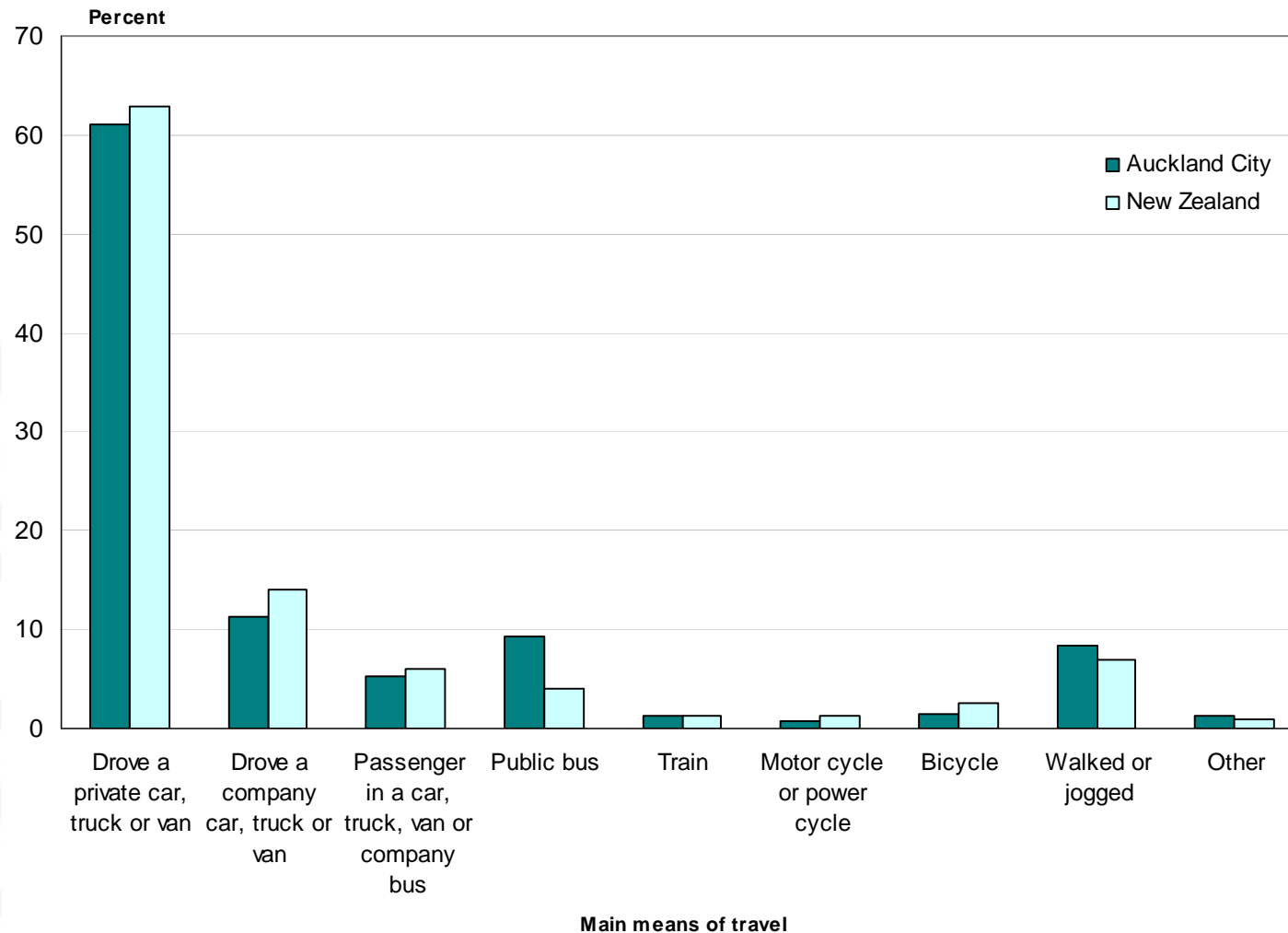
	Region	New Zealand
Helping someone who is ill or has a disability who does not live in own household	7.8	9.1
Household work for own household	84.9	86.1
Looking after a child who does not live in own household	14.0	16.2
Looking after a child who is a member of own household	32.1	31.6
Looking after a member of own household who is ill or has a disability	7.3	7.8
No activities	12.4	11.3
Other helping or voluntary work	12.7	15.4

Median Personal Income

Territorial Authorities in Auckland Region, 2006 Census



Main Means of Travel to Work Auckland City and New Zealand, 2006 Census



Private occupied dwellings

New Zealand 1,471,746

- 8.2 percent increase from 2001

Auckland Region 437,985

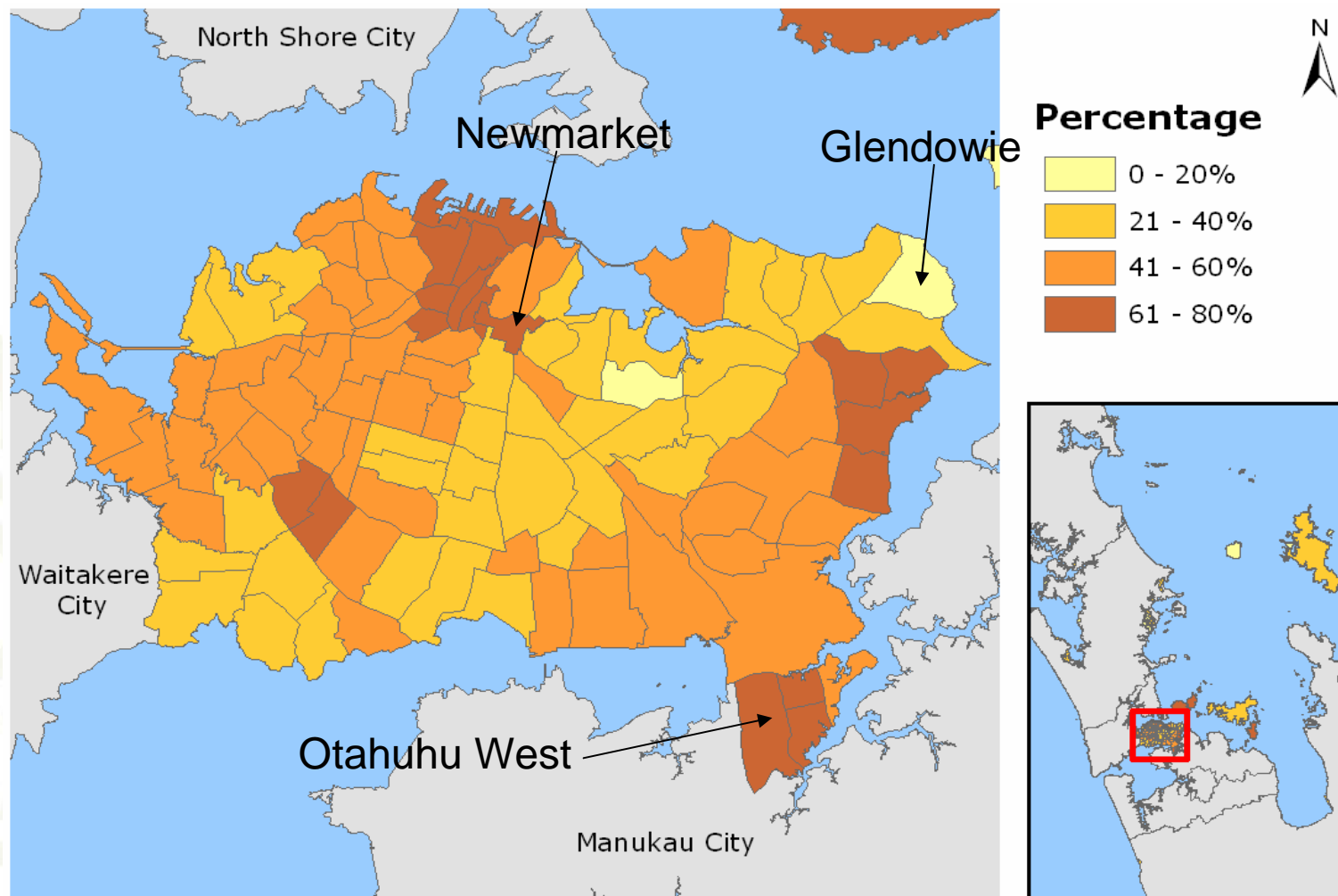
- 11.4 percent increase from 2001

Auckland City 145,014

- 9.7 percent increase from 2001

Dwellings Not Owned by Usual Resident(s)

Auckland City (Area Unit), 2006 Census



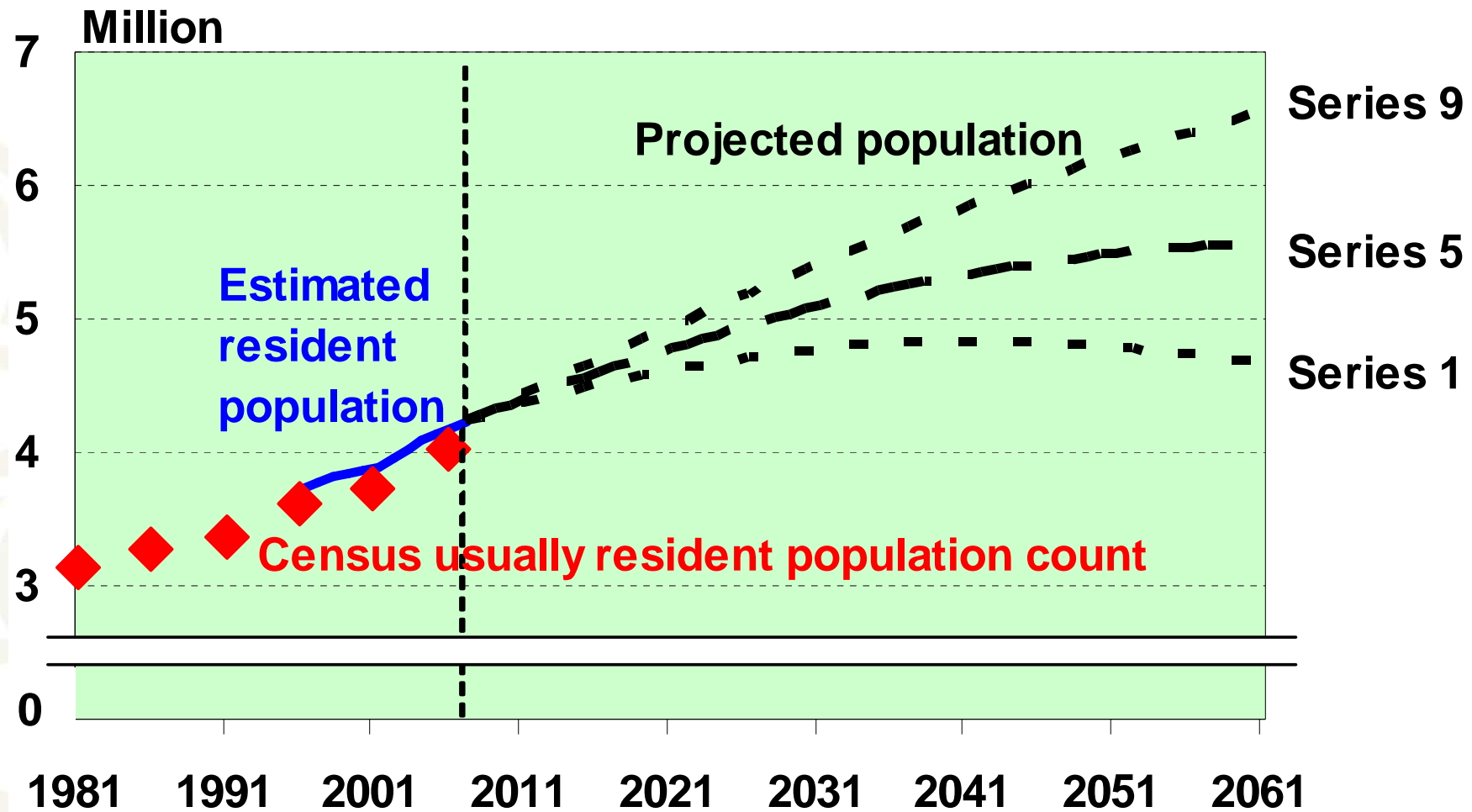
Population estimates and projections

A decorative graphic in the bottom-left corner consisting of several overlapping, light-colored circles of varying sizes, creating a pattern that resembles a stylized map or a cluster of data points.

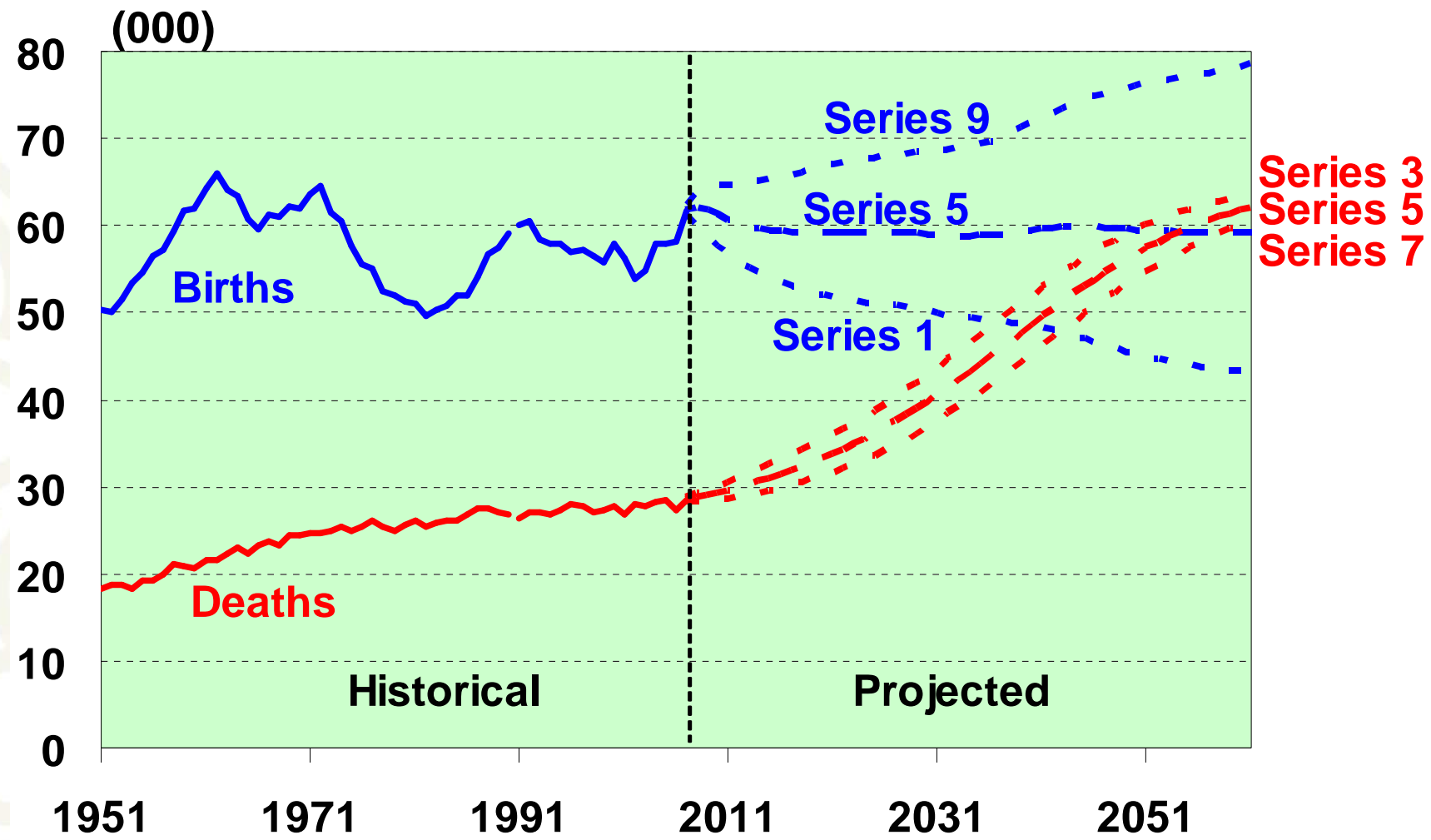
Estimated resident population

- The best measure of who lives in an area
- A census base (excluding overseas visitors) adjusted for:
 - o Net census undercount
 - o Residents temporarily overseas
 - o Births, deaths and net migration to 30 June 2006
- Limited variables (age, sex, ethnicity)
- Provides base for population projections

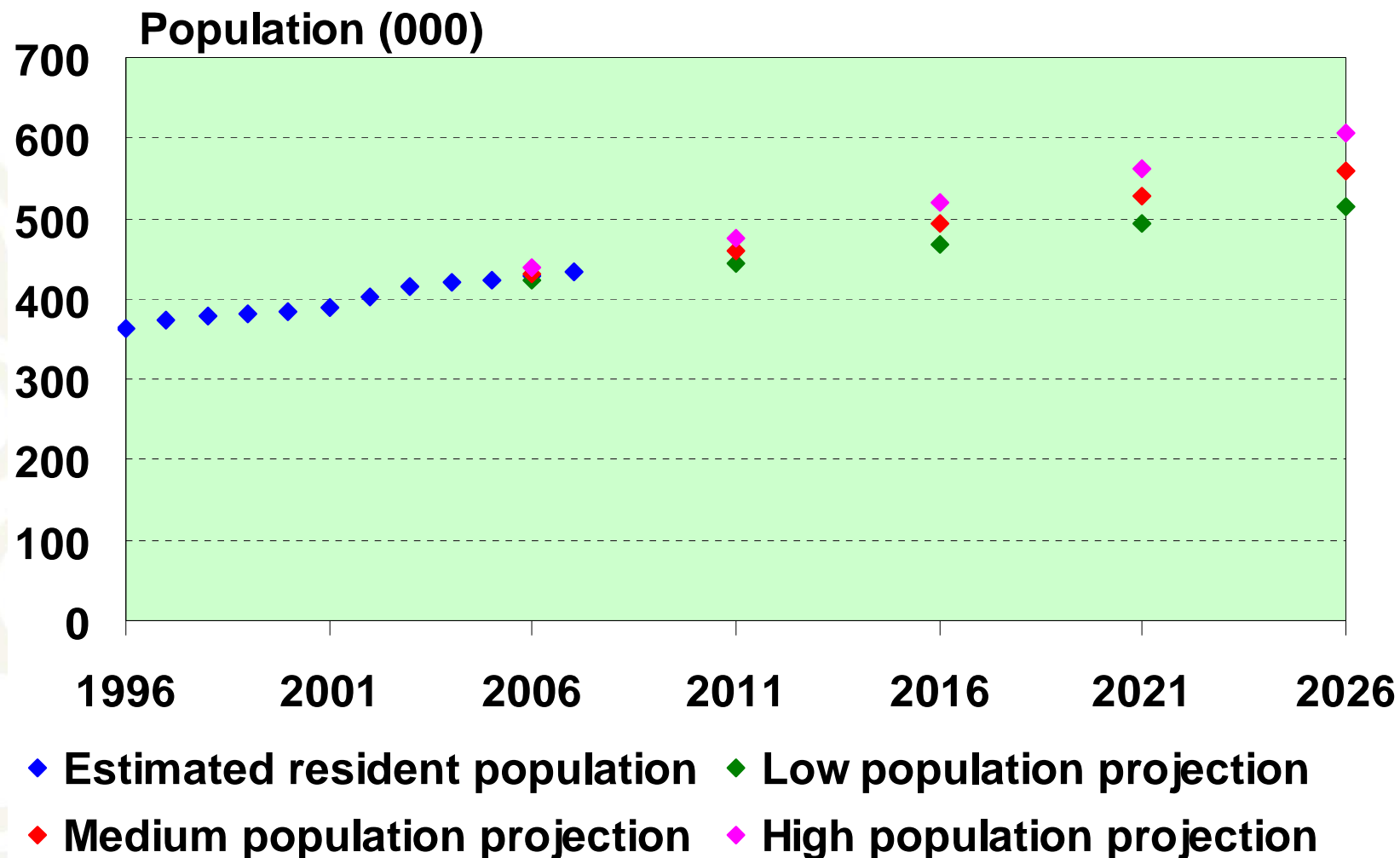
New Zealand population



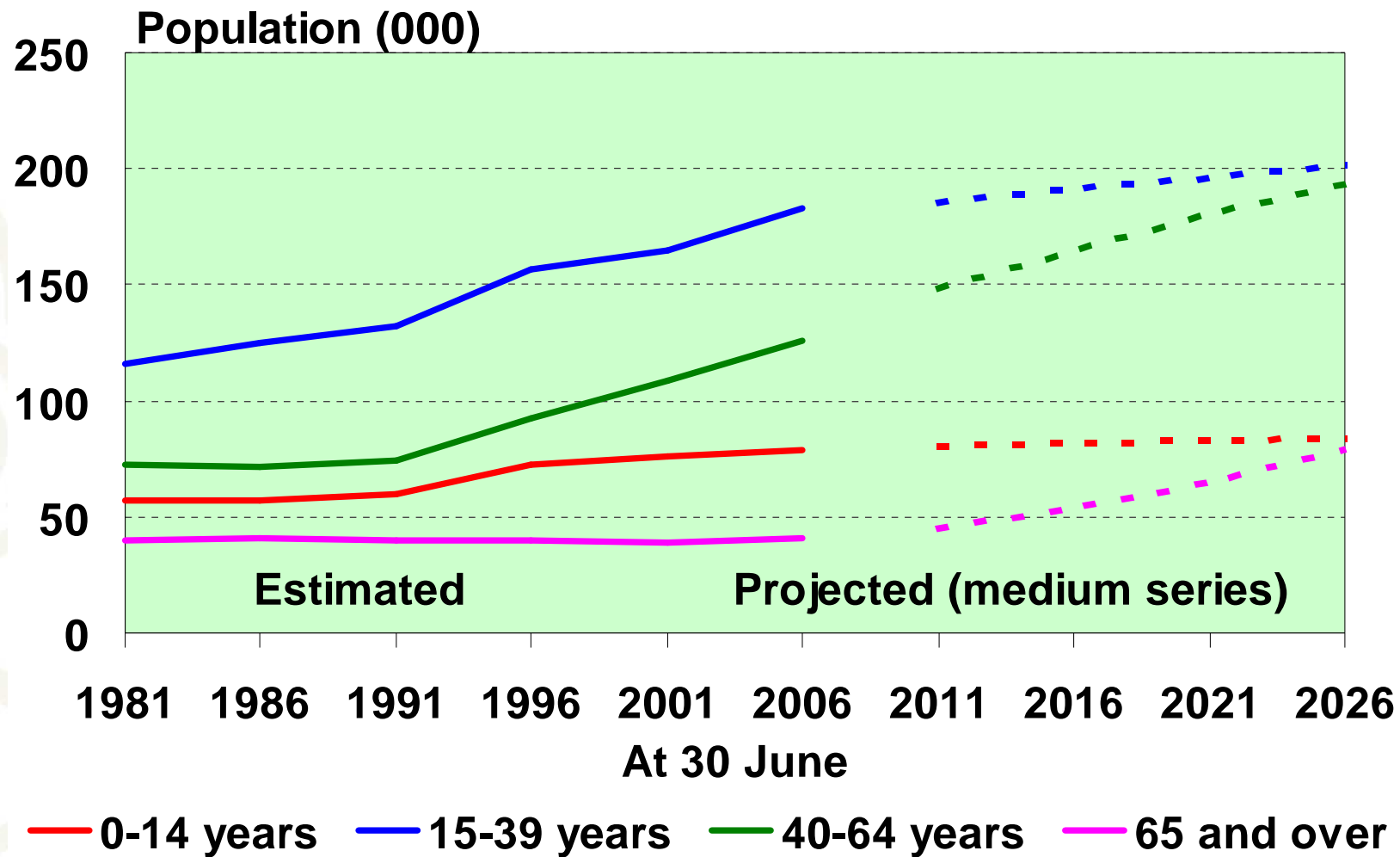
New Zealand shrinking natural increase



Population of Auckland City



Auckland City: growth in older ages



Key release dates: 2006-base population estimates

21 August 2007: first 2006-base population estimates

June 2006 data on Table Builder

- o National and subnational estimates June 2006
- o Area unit estimates June 2006 (NEW)
- o National estimates June 2007 Quarter

23 October 2007

- o Subnational estimates June 2007

December 2007

- o Area unit estimates June 2007 (NEW)

Population Projections – release dates

- National population projections: 24 October 2007
- Subnational population projections: 3 December 2007
- National ethnic projections: 2 April 2008
- National labour force projections: 6 May 2008
- Area unit population projections: mid 2008
- Family and household projections: 2008/09