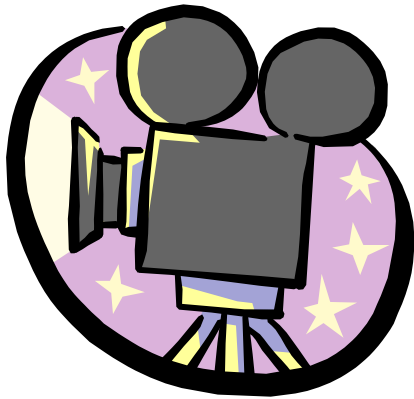




Lights, Camera Action!



Discover the scenes and locations of your favourite films and television programmes in the East of England.

- In Hertfordshire, pay a visit to Borehamwood - Britain's very own 'Hollywood', which during the 1980's could boast six out of the top ten box office hits of all time.
- Explore the timber-framed villages of Essex, home to the loveable antiques rogue 'Lovejoy'.
- Take a wander in the footsteps of Captain Mainwaring and his Dad's Army in Norfolk.
- Go spy-busting with special agent 007 James Bond in Cambridgeshire.

- For those looking for classic inspiration, head to the homes and gardens featured in Bleak House, Vanity Fair, Lady Audley's Secret and David Copperfield.
- Take to the skies in Bedfordshire, to see the aircraft used in Those Magnificent Men in their Flying Machines.
- Follow the clues to the crime scenes of P. D. James and Ruth Rendell - and their television adaptations set in Suffolk.

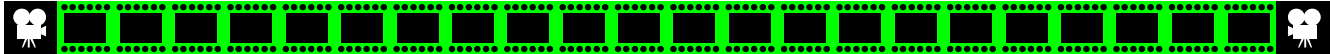
This information sheet brings together a selection of films and television programmes which have been made in the East of England. We would like to thank Screen East for their help and assistance.



Contents

Film and Television Locations	
Bedfordshire	2
Cambridgeshire	4
Essex	7
Hertfordshire	11
Norfolk	21
Suffolk	27





BEDFORDSHIRE

Film



28 Days Later... (2002) Horror, Thriller

Director: Danny Boyle.

Starring: Cillian Murphy, Naomie Harris and Brendan Gleeson. Four weeks after a mysterious, incurable virus spreads throughout the UK, a handful of survivors try to find sanctuary amongst the bloodthirsty zombies.

Location used: Luton Hoo (*not open to the public*).

Amazing Grace (2006) Drama, Thriller

Director: Michael Apted.

Starring: Michael Gambon, Rufus Sewell and Ioan Gruffudd. The idealist William Wilberforce manoeuvres his way through Parliament in 18th C. England, endeavoring to end slavery in the Empire.

Location used: Southill Park, Southill, nr. Biggleswade (*not open to the public*).

Batman Begins (2005) Action, Fantasy

Director: Christopher Nolan.

Starring: Christian Bale, Michael Caine and Liam Neeson. Superhero saga - showing how a young Bruce Wayne was destined to become Batman, the 'Caped Crusader'.

Location used: One of the former airship hangers at Cardington, nr. Bedford (*not open to the public*) housed a large indoor set. This included the 'Narrows', a decrepit and treacherous slum of Gotham City.



Cardington

Bright Young Things (2003) Comedy, Drama

Director: Stephen Fry.

Starring: Jim Broadbent, Simon Callow and Judi Dench. Adaptation of Evelyn Waugh's novel 'Vile Bodies' - looking at the lives of a novelist and his would-be lover in the 1930's.

Location used: Luton Hoo (*not open to the public*).

Chaand Kua Tkdāa (1994) Romance

Director: Saawan Kumar.

Starring: Sridevi, Salman Khan and Anupam Kher. Romantic 'Bollywood' drama, following a wealthy young man who lives in Europe, but whose family is from India. When his mother dies, she makes a final request that he marry a girl from India (and his search for love begins).

Location used: London Luton Airport.

Chitty Chitty Bang Bang (1968) Musical, Fantasy

Director: Ken Hughes.

Starring: Dick van Dyke, Sally Ann Howes and Lionel Jeffries. Fantasy children's musical. Inventor Caractacus Potts buys an old racing car, and transforms it into 'Chitty Chitty Bang Bang' - which can magically fly and float on water.

Location used: Scenes shot at the former airship hangers at Cardington, nr. Bedford (*not open to the public*).

www.visitastofengland.com

Colour Me Kubrick (2005) Comedy, Drama

Director: Brian W. Cook.

Starring: John Malkovich, Richard E. Grant and Peter Bowles.

The true story of a man who posed as film director Stanley Kubrick during the production of his last film 'Eyes Wide Shut', gaining access to exclusive London parties and restaurants - despite looking nothing like him.

Location used: Shops along High Town Road in Luton.

The Da Vinci Code (2006) Drama, Mystery

Director: Ron Howard.

Starring: Tom Hanks, Audrey Tautou and Paul Bettany.

A murder in the Louvre, and clues in Da Vinci paintings lead to the discovery of a religious mystery protected by a secret society for over 2,000 years.

Location used: Bryants Lane Quarry, Heath and Reach, nr. Leighton Buzzard (*not open to the public*).

The Dark (2005) Horror

Director: John Fawcett.

Starring: Sean Bean, Maria Bello and Richard Elfyn.

The story of a couple who have recently emigrated from America along with their daughter in order to try and save their marriage, whilst restoring a farmhouse in a secluded location.

Location used: Luton Hoo (*not open to the public*).

De-Lovely (2004) Musical, Drama

Director: Irwin Winkler.

Starring: Kevin Kline, Ashley Judd and Jonathan Pryce.

Inspecting a magical biographical stage musical, composer Cole Porter reviews his life and career with his wife Linda.

Location used: Luton Hoo (*not open to the public*).

Empire of the Sun (1987) Drama, War

Director: Steven Spielberg.

Starring: Christian Bale, John Malkovich and Miranda Richardson.

Coming-of-age drama. It tells of a young British boy who lives with his family in pre-war Shanghai. During the Japanese invasion, the boy is separated from his wealthy family, and with the help of a soldier learns to survive on his own.

Location used: Luton Hoo (*not open to the public*).

Enigma (2001) Romance, Thriller

Director: Michael Apted.

Starring: Dougray Scott, Kate Winslet and Saffron Burrows.

A young genius frantically races against time to crack an enemy code and solve the mystery surrounding the woman he loves.

Location used: Luton Hoo (*not open to the public*).

Flyboys (2006) Action, Adventure

Director: Tony Bill.

Starring: Jean Reno, James Franco and Martin Henderson.

The adventures of the Lafayette Escadrille - young Americans who volunteered for the French military before the US entered World War I. They became the country's first fighter pilots.

Location used: Wrest Park Gardens, Silsoe (nr. Luton).

Eyes Wide Shut (1999) Thriller, Drama

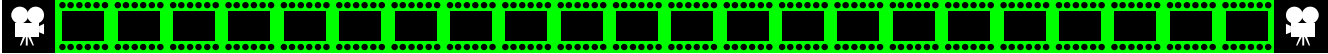
Director: Stanley Kubrick.

Starring: Tom Cruise, Nicole Kidman and Sydney Pollack.

Erotic/psychological drama, the final work of legendary director Stanley Kubrick. The story tells of a wealthy couple who are led into sexual temptation and desire.

Location used: Scenes filmed at Luton Hoo (*not open to the public*) and Woburn Abbey.





Four Weddings and a Funeral (1994) Comedy, Romance

Director: Mike Newell.

Starring: Hugh Grant, Andie MacDowell and Kristen Scott Thomas.

This romantic comedy set the box office alight around the world, winning an Academy Award. It centres on a romance between a charming Englishman and a beautiful American woman, who always run into each other at weddings.

Location used: Luton Hoo (*not open to the public*).



The Great Escape (1963) War, Adventure

Director: John Sturges.

Starring: Steve McQueen, James Garner and Richard Attenborough.

Epic war film, based on the true story of a group of allied prisoners who manage to escape from a allegedly impenetrable World War II Nazi prison camp. Noted for its famous motorcycle chase.

Location used: Luton Hoo (*not open to the public*).



Never Say Never Again (1983) Action, Adventure

Director: Irvin Kershner.

Starring: Sean Connery, Kim Basinger and Klaus-Maria Brandauer.

This James Bond adventure is a remake of 'Thunderball' (1965), and is not part of the official series of films. Sean Connery returns as Bond, as he tries to stop a wealthy business man from bringing world powers to their knees.

Location used: Luton Hoo (*not open to the public*).

Princess Caraboo (1994) Drama, Comedy

Director: Michael Austin.

Starring: Phoebe Cates, Jim Broadbent and Kevin Kline.

Loosely based on an actual incident, this tells of a young woman who suddenly appears in the English countryside in 1817, wearing exotic clothes and talking gibberish. She claims to be a princess of Japanese origin named 'Caraboo'.

Location used: Luton Hoo (*not open to the public*).

Quills (2000) Drama, Romance

Director: Philip Kaufman.

Starring: Geoffrey Rush, Kate Winslet and Joaquin Phoenix.

Drama following the later life of the notorious Marquis de Sade. After he escapes execution, he is sentenced to an asylum for the insane, where he begins to write and stage theatre pieces.

Location used: Luton Hoo (*not open to the public*).

Those Magnificent Men in their Flying Machines (1965)

Adventure, Comedy

Director: Ken Annakin.

Starring: Terry-Thomas, Sarah Miles and James Fox.

A classic - following a large air race between London and Paris.

Location used: Some of the aircraft used can be seen at The Shuttleworth Collection (Old Warden). One scene was shot on the former railway line between Cardington (nr. Bedford) and Old Warden - this is where a plane lands on top of a moving train.



The Shuttleworth Collection



Wilde (1997) Biography, Drama

Director: Britain Gilbert.

Starring: Stephen Fry, Jude Law and Vanessa Redgrave.

The story of Oscar Wilde - genius, poet, playwright and first modern man.

Location used: Luton Hoo (*not open to the public*).



Luton Hoo

The Wings of the Dove (1997) Drama, Romance

Director: Iain Softley.

Starring: Helena Bonham Carter, Linus Roache and Alison Elliott.

Based on the Henry James novel - this is a tale of love, money and deception. After the death of her mother, a young girl is looked after by her wealthy aunt. Later she falls in love with a poor journalist, much to her aunt's disapproval.

Location used: Luton Hoo (*not open to the public*).



Television

Bleak House (2005)

Channel: BBC.

Starring: Gillian Anderson, Alun Armstrong and Charles Dance.

A new 'soap opera' style serial version of the classic Charles Dickens novel.

Location used: Luton Hoo (*not open to the public*).

Class of '76 (2005)

Channel: ITV.

Starring: Robert Carlyle.

Supernatural story in which a police investigator attempts to solve a series of mysterious deaths involving his former classmates.

Location used: Millbrook Proving Ground (test track), nr. Ampt Hill (*not open to the public*).

Danger Man (1960-1961)

Channel: ITV.

Starring: Patrick MacGoohan.

1960's intrigue/espionage thriller. John Drake is a special operative for NATO, specialising in security assignments against any subversive element.

Location used: Dunstable Downs.

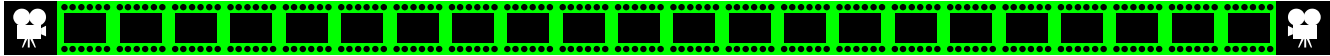
Inspector Morse (1987-2000)

Channel: ITV.

Starring: John Thaw and Kevin Whately.

Hugely popular detective series - centred around a grouchy but cultured police detective and his easy going partner investigating crimes in the Oxford area.

Location used: Luton Hoo (*not open to the public*).



The Lost Prince (2003)

Channel: BBC.

Starring: Miranda Richardson, Michael Gambon and Bill Nighy.
The true story of the British Royal Prince locked away because he had epilepsy. He was the youngest child of George V.
Location used: Luton Hoo (*not open to the public*) - which doubled for the interiors of Buckingham Palace, a Siberian farmhouse passage, a London consulting room, and Sandringham House in Norfolk.

Primeval (2007-)

Channel: ITV.

Starring: Douglas Henshall and Hannah Spearritt.
When strange anomalies in time start to appear all over England, Professor Cutter and his team have to help track down and capture all sorts of dangerous prehistoric creatures.
Location used: Whipsnade Wild Animal Park, nr. Dunstable.

The Prisoner (1967-1968)

Channel: ITV

Starring: Patrick McGoochan.

Cult mystery drama. A resigned secret agent is abducted to a bizarre prison where the warders are determined to break him.
Location used: Dunstable Downs.



The Professionals (1977-1983)

Channel: ITV.

Starring: Lewis Collins and Martin Shaw.

Cult 1970/80's crime action drama, featuring the lives of Bodie and Doyle, the top agents for Britain's CI5.
Location used: London Luton Airport.



Randall and Hopkirk Deceased (1969-1971)

Channel: ITV.

Starring: Mike Pratt and Kenneth Cope.

Original 1960/70's series, featuring detectives Jeff Randall and Marty Hopkirk.

Location used: Woburn Abbey.

Randall and Hopkirk Deceased (2000-2001)

Channel: BBC.

Starring: Bob Mortimer, Vic Reeves and Emilia Fox.

Comedy drama - an update of the cult 1960's show. It follows the investigations of private detective Marty Hopkirk, and his now 'dead' partner Jeff Randall, who has returned as a ghost.
Location used: Luton Hoo (*not open to the public*) was used as the fictional Trilby Park, a private therapy clinic.

The Saint (1962-1969)

Channel: ITV.

Starring: Roger Moore.

Cult 1960's series featuring Simon Templar as The Saint - a modern day Robin Hood who steals from rich criminals.
Location used: London Luton Airport.

Some Mothers do have em' (1973-1978)

Channel: BBC.

Starring: Michael Crawford and Michele Dotrice.

Classic comedy with the kind-hearted Frank Spencer, who was an accident just waiting to happen.
Location used: Short Street in Bedford.

Ultimate Force (2002-)

Channel: ITV.

Starring: Ross Kemp.

Action adventure series following the exploits of Sergeant Henno Garvie and his colleagues who make up Red Troop.
Location used: Bryants Lane Quarry, Heath and Reach, nr. Leighton Buzzard (*not open to the public*).

CAMBRIDGESHIRE



Film

Atonement (2007) Drama

Director: Joe Wright.

Starring: Keira Knightley, James McAvoy and Brenda Blethyn.

A 13 year old girl wrongly accuses a boy of a terrible crime, but the only person who doesn't believe her is her older sister.

Location used: Scenes shot in The Fens.

Battle of Britain (1969) Drama, War

Director: Guy Hamilton.

Starring: Harry Andrews, Michael Caine and Trevor Howard.

Follows the true events of 1940 - when the RAF fights a brave and desperate battle against Germany.

Location used: Imperial War Museum, Duxford, nr. Cambridge.

Chariots of Fire (1981) Drama, Sport

Director: Hugh Hudson.

Starring: Ben Cross, Ian Charleson and Nigel Havers.

Based on a true story, this film tells of two very different men (Eric Liddell and Harold Abrahams) who compete as runners in the 1924 Olympics.

Location used: The men attended Cambridge University, where street scenes for the film were shot. But the race around the college precinct (based on the actual event at Trinity College, Cambridge), was filmed at Eton College in Berkshire.

Dad Savage (1998) Crime, Thriller

Director: Betsan Evans Morris.

Starring: Patrick Stewart, Kevin McKidd and Helen McCrory.

British heist drama. Dad Savage is a country and western loving tulip farmer. His son has two friends who are recruited into his father's business. But they soon find out where Dad Savage has buried his money and try to steal it.

Location used: Scenes shot in The Fens.



Full Metal Jacket (1987) Drama, War

Director: Stanley Kubrick.

Starring: Matthew Modine, Adam Baldwin and Vincent D'Onofrio.

Classic film, following the trials and tribulations of a platoon of Marine Corps who develop dehumanized personalities in their training - which then shows in their tour of duty in Vietnam.

Location used: The Parris Island scenes were shot at the Basingbourn Barracks and a rifle range (*not open to the public*), just outside Cambridge.

Golden Age (2007) Drama

Director: Shekhar Kapur.

Starring: Cate Blanchett and Clive Owen.

An exploration of the relationship between Elizabeth I and the adventurer Sir Walter Raleigh.

Location used: St. John's College in Cambridge and Ely Cathedral.



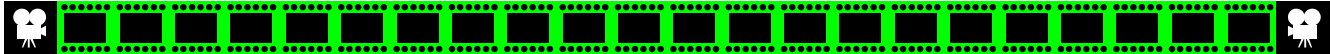
GoldenEye (1995) Action, Adventure

Director: Martin Campbell.

Starring: Pierce Brosnan, Sean Bean and Robbie Coltrane.

The 18th James Bond adventure - and the first starring Pierce Brosnan as the famous British secret agent 007. When the controls to 'GoldenEye', a high-tec satellite weapons system is stolen, Bond find himself battling against his former partner '006' who has turned bad.

Location used: A scene involving a train, and subsequent explosion were filmed at the Nene Valley Railway, nr. Peterborough.



Head in the Clouds (2004) Romance, Drama

Director: John Duigan.
Starring: Charlize Theron, Penelope Cruz and Stuart Townsend.
A sweeping romantic drama set in 1930's England, Paris and Spain. It follows the story of a young Cambridge student and a budding fashion photographer.
Location used: St. John's College, Cambridge.

Memphis Belle (1990) Action, War

Director: Michael Caton-Jones.
Starring: Matthew Modine, Eric Stolz and Tate Donovan.
The story of the 'Memphis Belle' a World War II B-17 bomber, piloted by a young crew on bombing raids over Europe.
Location used: Imperial War Museum, Duxford, nr. Cambridge.
It is home to the 'Sally B', the UK's last remaining airworthy B-17 Flying Fortress, which was used in the film.

Imperial War Museum, Duxford



Octopussy (1983) Action, Adventure

Director: John Glen.
Starring: Roger Moore, Maud Adams and Louis Jourdan.
The 13th James Bond adventure, this one starring Roger Moore as the famous British secret agent 007. The story revolves around a mysterious woman 'Octopussy', who turns out to be an international smuggler using a travelling circus as a front.
Location used: Scenes around the circus train were filmed at the Nene Valley Railway, nr. Peterborough.

Peter's Friends (1992) Comedy, Drama

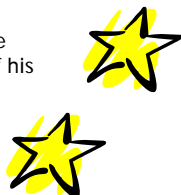
Director: Kenneth Brannagh.
Starring: Kenneth Brannagh, Emma Thompson and Stephen Fry.
Ten years after they were members of a music/comedy troupe at Cambridge University, a group of friends in their early 30's gather at the estate of Peter Morton, who's invited them there for a reunion.
Location used: Nene Valley Railway, nr. Peterborough.

Sylvia (2003) Biography, Drama

Director: Christine Jeffs.
Starring: Daniel Craig, Gwyneth Paltrow and Amira Casar.
The true story of the relationship between acclaimed 20th C. poets Ted Hughes and Sylvia Plath - after they meet as students at Cambridge University.
Location used: King's and Trinity Colleges, Cambridge.

Waterland (1992) Drama

Director: Stephen Gyllenhaal.
Starring: Jeremy Irons, Ethan Hawke and Sinead Cusack.
Based on the story by Graham Swift. This intense and intriguing film follows the past and present crises of schoolteacher Tom Crick, who attempts to resolve the problems in his own life (and the apathy of his students) by relating stories of his troubled childhood in the English Fen lands.
Location used: Scenes shot in The Fens.



Television



An Unsuitable Job for a Woman (1997-2001)

Channel: ITV.
Starring: Helen Baxendale and Annette Crosbie.
Drama series, featuring Cordelia Gray - the character created by author P. D. James. The first case sees her hired to look into the death of a Cambridge student.
Location used: Scenes were filmed in Cambridge.

Bliss (1995-1997)

Channel: ITV.
Starring: Simon Shepherd.
Drama series following Dr Sam Bliss, a scientific investigator. His first case sees him discovering a medical conspiracy over a longevity drug.
Location used: Scenes were filmed in Cambridge.

Cambridge Spies (2003)

Channel: BBC.
Starring: Tom Hollander, Rupert Penry-Jones and Toby Stephens.
The true story of the Cold War double agents (Kim Philby, Guy Burgess, Anthony Blunt and Donald Maclean) recruited whilst students at Cambridge.
Location used: King's and St. John's Colleges, Cambridge.

Casualty (1986-)

Channel: BBC.
Starring: Derek Thompson.
Long-running series combining soap opera and drama - set in 'Holby City', a hospital Accident and Emergency Department.
Location used: Nene Valley Railway, nr. Peterborough.

Cold Enough for Snow (1997)

Channel: BBC.
Starring: Maureen Lipman, Tom Wilkinson and David Ross.
Jack Rosenthal's sequel to 'Eskimo Day' - as two families cope with a Romeo and Juliet situation (between their son and daughter).
Location used: Scenes were filmed in Cambridge.

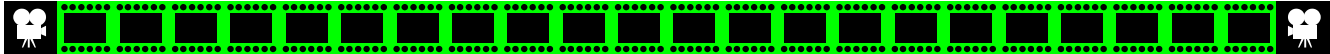
David Copperfield (1999)

Channel: BBC.
Starring: Bob Hoskins, Maggie Smith and Nicholas Lyndhurst.
Adaptation of the Dickens novel. The story follows David's life, from his early years with his mother and kind Clara Peggotty - to the evil Mr Murdstone. He later finds happiness again with Mr Micawber and his Aunt Betsey Trotwood.
Location used: Large areas of Wisbech were used. The Crescent became a London Street; Wisbech Castle (*not open to the public*) was used for the home of the Wickfield family; whilst Peckover House became Mrs Steerforth's house.



Nene Valley Railway





Doctor Who (1963-)

Channel: BBC.

Starring: Tom Baker and Lalla Ward.

The Time Lord finds himself helping a retired professor to look for a missing and dangerous artifact in this unfinished story 'Shada' from 1963.

Location used: Scenes filmed in Cambridge (Emmanuel College, King's Parade and the River Cam).



Foyles War (2002-2007)

Channel: ITV.

Starring: Michael Kitchen.

Set during World War II, Detective Chief Superintendent Christopher Foyle spends the war years dealing with crime in a small coastal town.

Location used: Imperial War Museum, Duxford, nr. Cambridge.



Honey for Tea (1994)

Channel: BBC.

Starring: Felicity Kendal, Nigel Le Vaillant and Leslie Phillips. Short-lived comedy series, in which an American woman brings her son across to study at Cambridge.

Location used: Clare College, Cambridge.

The Inspector Lynley Mysteries (2001-)

Channel: BBC.

Starring: Nathaniel Parker and Sharon Small.

Based on the novels by Elizabeth George, this drama series features Scotland Yard Detective Inspector Thomas Lynley (who is also the 8th Earl of Asherton).

Location used: Scenes were shot in Cambridge.

London's Burning (1988-2003)

Channel: ITV.

Starring: Mark Arden, James Hazeldine and Sean Blowers.

Popular fire-fighting drama series, focuses on the lives of the brave men and women of the Blue Watch at a fire station in Blackwall, London.

Location used: Nene Valley Railway, nr. Peterborough.

Lovejoy (1986-1994)

Channel: BBC.

Starring: Ian McShane, Dudley Sutton and Phyllis Logan.

Based on the novels by Essex writer Jonathan Gash, this comedy drama was set around the adventures of loveable antiques rogue 'Lovejoy'. Almost every episode featured locations in the East of England (notably in Essex and Suffolk). Lovejoy lived in a pretty country cottage, and travelled around in a battered Morris Minor called 'Miriam'. His close friends were tweed-dressed Tinker Dill and young apprentice Eric Catchpole. He also had relationships with local aristocrat Lady Jane Felsham, and later auctioneer Charlotte Cavendish.

Location used: Scenes filmed in Cambridge at Queens' College, the University Arms Hotel, and the American Cemetery at nearby Madingley.

Martin Chuzzlewit (1994)

Channel: BBC.

Starring: Keith Allen, Pete Postlethwaite and Paul Scofield. Adaptation of the Charles Dickens novel. The story follows the life of young Martin, who falls in love with his grandfather's helper Mary, and becomes a student of the critical Mr Pecksniff. Later he meets nasty Jonas Chuzzlewit.

Location used: Scenes were filmed in Wisbech, where Peckover House became Montague Tigg's home.



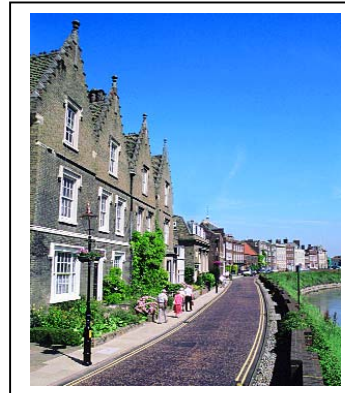
Micawber (2001)

Channel: ITV.

Starring: David Jason, Annabelle Apsion and Sam Kelly.

This gentle comedy set in Victorian England is inspired by the character from Charles Dicken's novel 'David Copperfield'.

Location used: Scenes were filmed in Wisbech (North Brink and Peckover House), which depicted London in the 1820's.



Wisbech



Murder in Mind (2001-2003)

Channel: BBC.

Starring: Different actors for each self-contained story. Series of psychological thrillers - the theme linking each episode is death in suspicious circumstances.

Location used: Scenes for the episode 'Tracks' were filmed at the Nene Valley Railway, nr. Peterborough.

A Sense of Guilt (1990)

Channel: BBC.

Starring: Trevor Eve, Rudi Davies and Lisa Harrow.

Controversial drama features the philandering writer Felix Cramer. Returning to London after working overseas, he proceeds to seduce the stepdaughter of his best friend, making her pregnant and destroying the lives of those around him.

Location used: Scenes were filmed in Cambridge.

Silent Witness (1996-)

Channel: BBC.

Starring: Amanda Burton.

Drama series featuring pathologist Dr Sam Ryan, who is regularly called out as a consultant to the scenes of murder investigations. It is noted for its vivid depiction of dead bodies.

Location used: The series featured scenes filmed in Cambridge, and also at the Nene Valley Railway, nr. Peterborough.

The Student Prince (1997)

Channel: BBC.

Starring: Robson Green, Rupert Penry-Jones and Tara Fitzgerald.

Romantic comedy. The Queen's youngest son is off to University, along with his new bodyguard Barry - who has no time for the royal family. But as the story progresses he begins to like the hopelessly unworlly prince.

Location used: Queens' College, Cambridge.

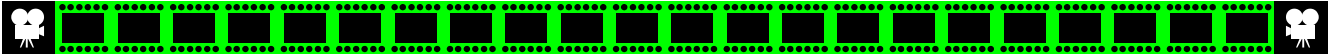
The Winds of War (1983)

Channel: UStv/ITV.

Starring: Robert Mitchum and Ali MacGraw.

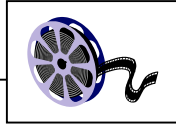
Based on the novel by Herman Wouk, this major 80's mini series is set against the backdrop of world events leading up to the Japanese attack on Pearl Harbour in 1941.

Location used: Cambridge American Cemetery, Madingley, nr. Cambridge.



ESSEX

Film



Agent Cody Banks 2 (2004) Action, Comedy

Director: Kevin Allen.

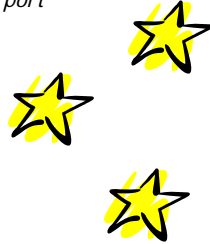
Starring: Frankie Muniz.

Children's film. Convert cover-ups and international intrigue await secret agent Cody Banks on his adventure set in London.

Location used: Stansted Airport.



Stansted Airport



Batman Begins (2005) Action, Fantasy

Director: Christopher Nolan.

Starring: Christian Bale, Michael Caine and Liam Neesen.

Superhero saga - showing how a young Bruce Wayne was destined to become Batman, the 'Caped Crusader'.

Location used: The opening scenes set in an Asian prison camp were actually filmed at Coalhouse Fort, nr. Tilbury.

Battle of Britain (1969) Drama, War

Director: Guy Hamilton.

Starring: Harry Andrews, Michael Caine and Trevor Howard.

Follows the true events of 1940 - when the RAF fights a brave and desperate battle against Germany.

Location used: North Weald Airfield.

Brothers in Trouble (1995) Drama

Director: Udayan Prasad.

Starring: Om Puri, Pavan Malhotra and Angeline Ball.

The story of Amir, an illegal Pakistani immigrant smuggled into England in the 1960's. The film is punctuated with the fear of detection and deportation. Forced to do unskilled work, Amir lives in a boarding house run by Hussein Shah - and things are really shaken up when a white girl (his girlfriend) arrives.

Location used: Scenes were filmed at the railway station in Clacton-on-Sea and at Mistley Quay (nr. Manningtree).

Bridget Jones' Diary (2001) Comedy, Romance

Director: Sharon Maguire.

Starring: Rene Zellweger, Colin Firth and Hugh Grant.

The story centres on Bridget, a 30-something singleton, convinced that everyone is getting it right except for her. Her ambitions are few, she would like to lose weight and find true love. Her attempts are noted in her diary entries.

Location used: Stansted Airport.

Chasing Liberty (2004) Comedy, Romance

Director: Andy Cadiff.

Starring: Mandy Moore and Grant Hilman.

The American president's daughter, unable to experience life like a normal 18 year old, escapes from her entourage of secret service agents to go on a road trip whilst traveling in Europe.

Location used: Hylands House at Chelmsford doubled for The White House.

Children of Men (2006) Adventure, Sci-fi

Director: Alfonso Cuaron.

Starring: Clive Owen, Julianne Moore and Michael Caine.

In 2027 (when man can no longer procreate), a former activist agrees to help transport a pregnant woman to a sanctuary at sea in attempt to save mankind.

Location used: Scenes were filmed at Wallasea Island.

Clockwork Mice (1995) Drama

Director: Jean Vadim.

Starring: Art Malik, Ian Hart and Catherine Russell.

A teacher faced with a class of unruly children decides to bring about order by sharing his love of running with the pupils. But when the father of the most difficult pupil dies, the teacher is led into a series of dangerous running stunts.

Location used: Scenes filmed at the town of Chipping Ongar.

Essex Boys (2000) Thriller

Director: Terry Winsor.

Starring: Sean Bean, Alex Kingston and Tom Wilkinson.

Two-fisted tale of drugs, guns and murder - based on a real-life gangland killing that left three dead in Essex.

Location used: Filming took place at Jaywick Sands, Brightlingsea, Clacton-on-Sea and Southend-on-Sea.

Flyboys (2006) Action, Adventure

Director: Tony Bill.

Starring: Jean Reno, James Franco and Martin Henderson.

The adventures of the Lafayette Escadrille - young Americans who volunteered for the French military before the US entered World War I. They became the country's first fighter pilots.

Location used: Copped Hall (nr. Epping) - *not open to the public.*

The Fourth Protocol (1987) Thriller

Director: John MacKenzie.

Starring: Michael Caine, Pierce Brosnan and Joanna Cassidy.

This fact-based spy thriller is set in 1968. The protocol is a secret agreement between America, Britain and Russia to cease smuggling nuclear weapons into their respective countries. But a rogue spy is ordered to stage a nuclear accident in England, and blame America.

Location used: Scenes were shot at Colchester (railway station) and Chelmsford (where there is a memorable car chase scene).

Four Weddings and a Funeral (1994) Comedy, Romance

Director: Mike Newell.

Starring: Hugh Grant, Andie MacDowell and Kristen Scott Thomas.

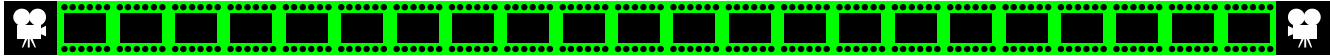
This romantic comedy set the box office alight around the world, winning an Academy Award. It centres on a romance between a charming Englishman and a beautiful American woman, who always run into each other at weddings.

Location used: Funeral scenes were shot at St. Clement's Church in West Thurrock.



St. Clement's Church, West Thurrock





GoldenEye (1995) Action, Adventure

Director: Martin Campbell.

Starring: Pierce Brosnan, Sean Bean and Robbie Coltrane. The 18th James Bond adventure, and the first starring Pierce Brosnan as the famous British secret agent 007. When the controls to 'GoldenEye', a high-tec satellite weapons system is stolen, Bond find himself battling against his former partner '006' who has turned bad.

Location used: Stansted Airport.

Hot Fuzz (2007) Action, Comedy

Director: Edgar Wright.

Starring: Simon Pegg and Nick Frost.

Jealous colleagues conspire to get a top London cop transferred to a small town and paired with a witless new partner.

Location used: Copped Hall (nr. Epping) - *not open to the public.*

Killing Dad (1989) Comedy

Director: Michael Austin.

Starring: Richard E. Grant, Denholm Elliott and Julie Walters. When a drunk and unemployed father returns to his abandoned family after 23 years, his grown son tries to murder him.

Location used: Scenes were filmed at the Pier and Palace Hotels in Southend-on-Sea.

Kinky Boots (2005) Comedy, Drama

Director: Julian Jarrold.

Starring: Chiwetel Ejilfor and Joel Edgerton.

A man finds an unlikely ally in Lola, a brassy cabaret singer, in his effort to save his father's shoe factory.

Location used: Scenes filmed on Clacton Pier, Clacton-on-Sea.

The Lawless Heart (2001) Comedy, Drama

Director: Tom Hunsinger/Neil Hunter.

Starring: Tom Hollander, Douglas Henshall and Bill Nighy.

Three intersecting stories about the relationship of three friends whose lives are affected by the death of a restaurateur.

Location used: Scenes filmed in Maldon, and at nearby Tolleshunt Major.



Maldon



New Town Original (2005) Drama

Director: Jason Ford.

Starring: Kal Aise, Steve Gibbs and Elliott Jordan.

A brooding picture looking at young lives in the urban sprawl of Britain.

Location used: Basildon (town centre and Castle Mayne pub).



Proof (2005) Drama

Director: John Madden.

Starring: Gwyneth Paltrow, Anthony Hopkins and Jake Gyllenhaal.

A daughter comes to the aid of her dying father, a brilliant math's professor who's lost his grip on reality.

Location used: Stansted Airport.

The Queen (2006) Biography, History

Director: Stephen Frears.

Starring: Helen Mirren and Michael Sheen.

An intimate behind the scenes look at the interaction between HM Elizabeth II and Prime Minister Tony Blair, following the death of Diana, Princess of Wales.

Location used: Southend Airport.

The Reckoning (2003) Drama

Director: Paul McGuigan.

Starring: Willem Dafoe, Paul Bettany and Brian Cox.

A 14th C. priest joins up with a traveling band of actors, who then discover a murder has occurred. They then try to solve the crime by recreating it in a play.

Location used: Hedingham Castle, Castle Hedingham.

Starter for Ten (2006) Drama, Romance

Director: Tom Vaughan.

Starring: James McAvoy.

Set in 1995, this is the story of a working-class student who navigates his first year at Bristol University.

Location used: Scenes filmed on the beaches at Clacton-on-Sea and Jaywick.

Vanity Fair (2004) Drama, Romance

Director: Mira Nair.

Starring: Gabriel Byrne, Reese Witherspoon and Rhys Ifans.

Most recent film version of William Makepeace Thackeray's satirical novel about middle-class London life and manners at the beginning of the 19th C.

Location used: Scenes were filmed in Colchester.

Who Framed Roger Rabbit (1988)

Director: Robert Zemeckis.

Starring: Bob Hoskins, Christopher Lloyd and Charles Fleischer. A toon hating detective is a cartoon rabbit's only hope to prove his innocence when he is accused of murder.

Location used: State Cinema, Grays.

Wimbledon (2004) Comedy, Drama

Director: Richard Loncraine.

Starring: Kirsten Dunst and Paul Bettany.

A English pro tennis player has lost his ambition. Fortunately for him he meets a young US player on the women's circuit who helps him recapture his focus.

Location used: Stansted Airport.

Television



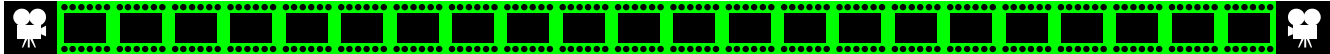
Band of Brothers (2001)

Channel: UStv/BBC.

Starring: Damian Lewis, Ron Livingston and Donnie Wahlberg.

War-time mini-series - a follow-up to the film 'Saving Private Ryan'. The series follows the real-life saga of a US paratroop unit's part in the D-Day landings.

Location used: Scenes showing aircraft taking off for the D-Day sequences were filmed at North Weald airfield.



Bleak House (2005)

Channel: BBC.

Starring: Gillian Anderson, Alun Armstrong and Charles Dance.
A new 'soap opera' style serial version of the classic Charles Dickens novel.

Location used: Ingatestone Hall.

Can't Buy Me Love (2004)

Channel: ITV.

Starring: Michelle Collins and Martin Kemp.

A drama inspired by the real life story of Howard Walmsley, who was jailed for fraud after pretending to win the lottery.
Location used: Basildon (town centre, including various shops).

Class of '76 (2005)

Channel: ITV.

Starring: Robert Carlyle.

Supernatural story in which a police investigator attempts to solve a series of mysterious deaths of former classmates.

Location used: Scenes filmed at Leigh-on-Sea.

Cracker (2006)

Channel: ITV.

Starring: Robbie Coltrane.

Fitz returns to Manchester after living ten years in Australia. He is drawn into the investigation of a British soldier who served in Northern Ireland.

Location used: Stansted Airport.



Death in Holy Orders (2003)

Channel: BBC.

Starring: Martin Shaw, Jesse Spencer and Robert Hardy.

An adaptation of the novel by East Anglian writer, P. D. James. The story features Scotland Yard detective Adam Dalgliesh, who lives partly in Norfolk in a converted windmill. Here amongst the quiet country lanes, pretty villages and seaside towns, murders come thick and fast.

Location used: Scenes filmed at St. Osyth priory (nr. Clacton-on-Sea), which doubled as St. Anselm's in the story. *Not open to the public.*

Eastenders (1985-)

Channel: BBC.

Starring: Wendy Richard, Barbara Windsor and Steve McFadden.
Soap opera, following the stories of working-class East End folk. It is set in the fictitious Albert Square, part of the London Borough of Walford E20.

Location used: Southend-on-Sea - where the missing Mark Fowler is found working at the fun fair. Clacton-on-Sea - Pat, Ricky and David are on the trail of the missing Frank Butcher. The seafront gardens, Royal Hotel and former Butlins site were used. They talked about past holidays spent in the resort whilst relaxing on the pier and seafront.

Hi-de-Hi (1980-1988)

Channel: BBC.

Starring: Paul Shane, Ruth Madoc and Su Pollard.

Comedy series set around the fictional Maplins Holiday Camp during the late 50's/early 60's. Characters included camp host Ted Bovis, Gladys Pugh the announcer noted for her 'morning campers', and daft chalet maid Peggy.

Location used: a former holiday camp in Dovercourt.

Hustle (2004-)

Channel: BBC.

Starring: Adrian Lester, Marc Warren and Robert Vaughn.

Series following a group of London con artists as they pull off daring and intricate stings on the rich and greedy.

Location used: Scenes were filmed at Stansted Airport.

Ivanhoe (1997)

Channel: BBC.

Starring: Steven Waddington, Christopher Lee and Victoria Smurfit.

This drama series is based on the classic novel by Sir Walter Scott. Set during the time of the Third Crusade, it is a swashbuckling epic of mortal combat, honor and love - complete with Richard the Lionheart and Robin Hood.

Location used: Hedingham Castle, Castle Hedingham.

Jericho (2005)

Channel: ITV.

Starring: Robert Lindsay.

Set in the 1950's, this series follows a police detective who becomes a media star after being involved in high profile cases.

Location used: The State Cinema, Grays.

Jonathan Creek (1997-)

Channel: BBC.

Starring: Alan Davies, Julia Sawalha and Caroline Quentin.

Quirky drama series - following the adventures of Jonathan Creek, who worked as an assistant for a top illusionist - but in-fact is really the brains behind the act. He soon finds that his mind is also good at solving baffling crimes. He lives in an East Anglian windmill.

Location used: Stansted Airport.

Lady Audley's Secret (2000)

Channel: ITV.

Starring: Neve McIntosh, Kenneth Cranham and Steven Mackintosh.

This Victorian tale is about a man's obsession with a desperate woman.

Location used: The novel (c.1862) by Mary Elizabeth Braddon was actually written at Ingatestone Hall - so much of the filming took place here too. In the book, Ingatestone Hall becomes 'Audley Court'.



Ingatestone Hall



Life Begins (2004-)

Channel: ITV.

Starring: Caroline Quentin and Alexander Armstrong.

The experiences and life of Maggie Mee who finds herself on her own after her husband walks out on her.

Location used: Stansted Airport.

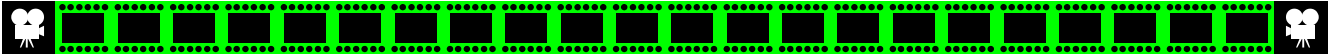
London's Burning (1988-2003)

Channel: ITV.

Starring: Mark Arden, James Hazeldine and Sean Blowers.

Popular fire-fighting drama series, focuses on the lives of the brave men and women of the Blue Watch at a fire station in Blackwall, London.

Location used: Scenes filmed at Southend-on-Sea (rescue of a beached whale).



Lovejoy (1986-1994)

Channel: BBC.

Starring: Ian McShane, Dudley Sutton and Phyllis Logan. Based on the novels by Essex writer Jonathan Gash, this comedy drama was set around the adventures of loveable antiques rogue 'Lovejoy'. Almost every episode featured locations in the East of England (notably in Essex and Suffolk). Lovejoy lived in a pretty country cottage, and travelled around in a battered Morris Minor called 'Miriam'. His close friends were tweed-dressed Tinker Dill and young apprentice Eric Catchpole. He also had relationships with local aristocrat Lady Jane Felsham, and later auctioneer Charlotte Cavendish.



Hedingham Castle

Location used: Filmed throughout Essex including Belchamp St. Paul (pub), Braintree, Chelmsford, Coggeshall, Colchester (Town Hall), Finchingfield (the green and The Fox pub), Gosfield (Green Man pub and hall), Great Bardfield, Great Dunmow, Halstead (Townford Mill), Harlow, Harwich (Stena ferry to Hook of Holland), Hedingham Castle, Ingatestone Hall, Kelvedon, Laver Marney Tower, Little London, Maldon (quayside, aboard Thames barge in Blackwater estuary), Moyns Park, Saffron Walden (Town Hall where an auction was held, Barclays Bank, Market Square, Tourist Information Centre where Eric fell in love with one of the assistants and the Lime Tree Court Restaurant), Stansted Mountfitchet, Thaxted (Town Street and pump), Tollesbury and Wakes Colne. Felsham Hall (home of Lady Jane) can be found in the village of Belchamp Walter. Next door is the workshop where Lovejoy was based.

Man and Boy (2002)

Channel: BBC.

Starring: Ioan Gruffudd, Pauline Collins and Dominic Howell. Adaptation of the best-selling novel by Tony Parsons. A man is left to look after his young son, when a one-night stand brings his marriage crashing down around him. This is the story of his new found responsibility.

Location used: Stansted Airport.



Murphy's Law (2003-)

Channel: BBC.

Starring: James Nesbitt.

Series set around the work of undercover cop - Tommy Murphy. *Location used:* Scenes shot at the Forest Gate Inn at Epping.

Plotlands (1997)

Channel: BBC.

Starring: Saskia Reeves, Rebecca Callard and Richard Cordery. Drama series set in 1922 - as a woman and her two daughters spend their last five pounds to buy their own "little bit of England". This consists of just a plot in a field with a tent. Her fellow neighbours are similarly down-and-out, trying to survive in the middle of nowhere, but eventually forming a community. *Location used:* Scenes were filmed in the town of Wivenhoe.

Randall and Hopkirk Deceased (2000-2001)

Channel: BBC.

Starring: Bob Mortimer, Vic Reeves and Emilia Fox.

Comedy drama - an update of the cult 1960's show. It follows the investigations of private detective Marty Hopkirk, and his now 'dead' partner Jeff Randall, who has returned as a ghost.

Location used: Scenes were filmed in Essex for a series one episode - 'A Blast from the Past'. The ruined house featured is Copped Hall, nr. Epping. Whilst the farmhouse is Home Farm, nr. Epping (*neither are open to the public*).

Sharpe (1993-1997)

Channel: ITV.

Starring: Sean Bean.

Based on the novels by Bernard Cornwell - Richard Sharpe is a soldier who in 1809 is instantly promoted to officer status after saving the Duke of Wellington's life. 'Sharpe's Regiment' (1996) sees him returning to England to recruit new soldiers for his regiment. But after uncovering corruption in the army's highest ranks, he finds himself the subject of an assassination attempt. Sharpe fakes his death and re-enlists in the South Essex Regiment.

Location used: Tilbury Fort.



Tilbury Fort



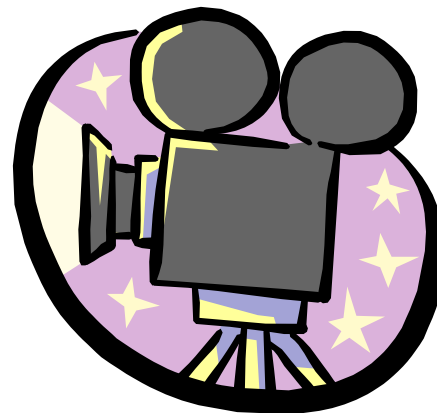
Spooks (2002-)

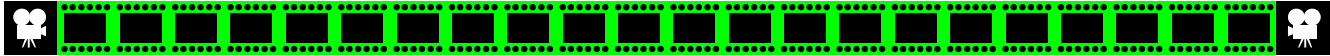
Channel: BBC.

Starring: Matthew Macfadyen, Keeley Hawes and Jenny Agutter.

Action-packed drama series set around the security service MI5.

Location used: Scenes for one episode were filmed at the former Bradwell-on-Sea Power Station, nr. Maldon. A further episode featured Theydon Mount (nr. Epping).





HERTFORDSHIRE

Hertfordshire - Britain's very own Hollywood

The southeast of Hertfordshire has developed as a focal point for film and television production, particularly the town of **Borehamwood**, better known as **Elstree**. The first studio opened here in 1914, and six more followed. Elstree became known as the 'British Hollywood' - as it had the greatest number of production facilities outside Hollywood itself. Elstree gave us the first talkie to be made in Britain; the first British musical colour film; the first British colour talking film; and the first film to use Dolby sound. During the 1980's, Borehamwood could boast six out of the top ten box office hits of all time.



Today only two of the original studios (not open to the public) remain in operation:-

BBC Elstree Centre

Opened in 1914 as the Neptune Studio. Over the years it has played host to many different owners. In 1961 it became part of ATV Television, with series such as *The Saint* and *The Persuaders* - alongside big entertainment specials with Shirley Bassey and Tom Jones. Then in 1983, it was purchased by the BBC - home today to the sets of *EastEnders* and *Holby City*.

Elstree Film Studios

Opened in 1926. It has been home to over 500 feature films, including the *Indiana Jones* and original *Star Wars* trilogies, *The Shining*, *Get Carter*, *Moby Dick*, *Murder on the Orient Express* and *The Dambusters*. Recent productions include *The Hitchhiker's Guide to the Galaxy* and *Closer*. Hammer Films (noted for their horrors) were also based here between 1959-1975. Famous directors to have passed through the doors include Steven Spielberg, Stanley Kubrick and Alfred Hitchcock. George Lucas filmed part of both *Star Wars* Episode II (*Attack of the Clones*) and Episode III (*Revenge of the Sith*) here - and in recognition 'Stage One' has been named after him. Popular television shows past and present include *The Avengers*, *The Muppet Show*, *Dancing on Ice* and *Who Wants to be a Millionaire?* The house from the reality show 'Big Brother' is sited here too. Today Elstree Film Studios are owned by Hertsmere Borough Council. www.elstreefilmtv.com

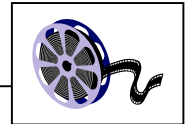
Borehamwood Film Walk

Take a walk around the town on a special film walk - a leaflet is available from Hertsmere Borough Council on +44 (0)208 207 2277. Explore Shenley Road, with its plaques commemorating many famous stars from days gone by. For television star spotting, try Aberford and Meadow Parks, both used as outside locations for the BBC's *EastEnders* and *Holby City*.



Leavesden Studios

Just to the north (beside the M25) at Abbots Langley is Leavesden Studios - Britain's most exciting film making complex. Here a former wartime plane factory (once owned by Rolls Royce) has been transformed into over one million square feet of studio space and hundreds of acres of back lot. It has been used for *GoldenEye* (James Bond), *Sleepy Hollow*, *Star Wars 'The Phantom Menace'* and the *Harry Potter* films (*Philosopher's Stone*, *Chamber of Secrets*, *Prisoner of Azkaban*, *Goblet of Fire* and the forthcoming *Order of the Phoenix*). *Not open to the public.*



Film

Alien Love Triangle (2002) Sci-Fi

Director: Danny Boyle.

Starring: Kenneth Branagh, Courtney Cox and Heather Graham. This short movie forms part of a three part science fiction story - 'The Light Years Trilogy', which each segment filmed by a different director.

Location used: Mainly filmed at Elstree Film Studios (*not open to the public*) - although a selection of outside locations were used in the county.

A Way Through the Woods (2005) Drama, Romance

Director: Julian Fellowes.

Starring: Tom Wilkinson, Rupert Everett and Emily Watson. Loosely based on the novel by Nigel Balchin. A romantic tale about a love triangle that complicates the lives of all involved.

Location used: Scenes filmed at the village of St. Pauls Walden Bury, nr. Stevenage (including Stagenhoe Park).

Alfie (2004) Comedy, Drama

Director: Charles Shyer.

Starring: Jude Law, Renee Taylor and Jane Krakowski.

A cockney womaniser learns the hard way about the dangers of his actions.

Location used: Ashridge Estate, nr. Berkhamsted.

Batman (1989) Action, Fantasy

Director: Tim Burton.

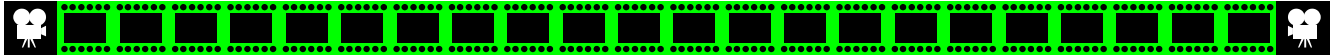
Starring: Michael Keaton, Jack Nicholson and Kim Basinger.

Blockbusting action/fantasy film based on the famous superhero of Gotham City - 'Batman' (Bruce Wayne), and his battle against his arch enemy 'The Joker'. One of the top grossing films of 1989.

Location used: The exterior of Knebworth House, nr. Stevenage was used for Batman's stately home 'Wayne Manor'.



Knebworth House



Birthday Girl (2001) Comedy, Drama

Director: Jez Butterworth.

Starring: Nicole Kidman, Ben Chaplin and Vincent Cassel.
A thirty-something bank clerk from St. Albans who is looking for love, gets more than he bargains for with the arrival of his Russian internet mail-order bride.

Location used: Scenes were filmed at North Church Common on the Ashridge Estate, nr. Berkhamsted.

Bridget Jones: The Edge of Reason (2004) Comedy, Romance

Director: Beeban Kidron.

Starring: Renee Zellweger, Colin Firth and Hugh Grant.
Based on Helen Fielding's book. The story picks up four weeks after the first film, and already Bridget Jones is becoming uncomfortable in her relationship with Mark Darcy.

Location used: Scenes were filmed on the Ashridge Estate, nr. Berkhamsted (which sees Bridget on horseback), and at the village of Aldbury, nr. Tring.

Boston Kickout (1995) Drama

Director: Paul Hills.

Starring: John Simm, Emer McCourt and Andrew Lincoln.
This drama set in the town of Stevenage, combines elements of humour and gritty realism. It tells of how bored youngsters go on violent sprees late at night - this being a 'Boston Kickout'.

Location used: Scenes filmed at Barclays School in Stevenage.

Cashback (2006) Comedy, Drama

Director: Sean Ellis.

Starring: Sean Biggerstaff, Shaun Evans and Michelle Ryan.
After a painful break-up, Ben develops insomnia. To kill time, he starts working the night shift at the local supermarket, where his artistic imagination runs wild.

Location used: Scenes filmed at West Herts College (Watford).

Chasing Liberty (2004) Comedy, Romance

Director: Andy Cadiff.

Starring: Mandy Moore and Grant Hilman.
The American president's daughter, unable to experience life like a normal 18 year old, escapes from her entourage of secret service agents to go on a road trip whilst traveling in Europe.

Location used: Scenes shot at a privately owned Georgian house in Hitchin (*not open to the public*).

Children of Men (2006) Adventure, Sci-fi

Director: Alfonso Cuaron.

Starring: Clive Owen, Julianne Moore and Michael Caine.
In 2027 (when man can no longer procreate), a former activist agrees to help transport a pregnant woman to a sanctuary at sea in attempt to save mankind.

Location used: Scenes were filmed at Bushey Campus.

Chromophobia (2005) Drama

Director: Martha Fiennes.

Starring: Ralph Fiennes, Penelope Cruz and Ian Holm.
Set in London, this is a bleak Altmanesque contemporary drama. It focuses on a number of different storylines involving various characters.

Location used: Scenes shot at Hilfield Castle at Elstree (*not open to the public*).

The Dark (2005) Horror

Director: John Fawcett.

Starring: Sean Bean, Maria Bello and Richard Elfyn.
Set in Wales, the story is about a couple who have recently emigrated from America along with their daughter in order to try and save their marriage, whilst restoring a farmhouse in a secluded location.

Location used: Ashridge Estate, nr. Berkhamsted.

The Dirty Dozen (1967) War, Drama

Director: Robert Aldrich.

Starring: Lee Marvin, Ernest Borgnine and Charles Bronson.
Classic wartime adventure. A US Army Major is assigned a dozen convicted murderers to train and lead on a mass assassination attempt of German officers in World War II.

Location used: Scenes filmed at Aldbury (nr. Tring) and the Ashridge Business School (nr. Berkhamsted).



Aldbury

Dulhan Banoo Mein Teri (2000) Romance

Director: B Subhash.

Starring: Faraz Khan, Deepti Bhatnagar and Dalip Tahil.
Romantic 'Bollywood' drama. With the blessings of his Dadi Ma, Deepak Rai visits India with its friend Little Jack, a music composer. There he meets and falls in love with Radha, a simple flower girl.

Location used: Scenes were filmed at the Bhaktivedanta Manor (*not open to the public*) at Aldenham, nr. Watford.

Enigma (2001) Romance, Thriller

Director: Michael Apted.

Starring: Dougray Scott, Kate Winslet and Saffron Burrows.
A young genius frantically races against time to crack an enemy code and solve the mystery surrounding the woman he loves.

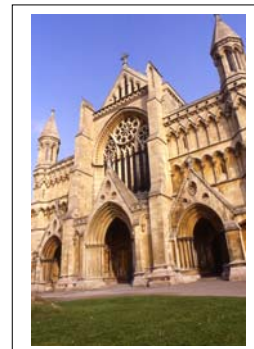
Location used: Scenes were filmed in the county (a farm, cottage and church).

First Knight (1995) Drama, Romance

Director: Jerry Zucker.

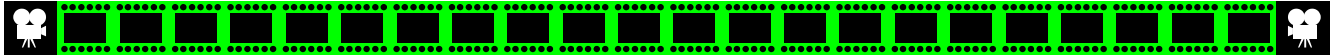
Starring: Sean Connery, Richard Gere and Julia Ormond.
Adventure and romance, set around the tale of King Arthur and the Knights of the Round Table. The story tells of Sir Lancelot threatening to supersede the aging King, by winning over his wife Guinivere.

Location used: A wedding was shot at the Cathedral and Abbey Church of St. Alban (St. Albans), whilst a complete hill village was built on the Ashridge Estate, nr. Berkhamsted.



Cathedral and Abbey Church of St. Alban





Flyboys (2006) Action, Adventure

Director: Tony Bill.

Starring: Jean Reno, James Franco and Martin Henderson.
The adventures of the Lafayette Escadrille - young Americans who volunteered for the French military before the US entered World War I. They became the country's first fighter pilots.

Location used: St. Albans Sand and Gravel Quarry
(not open to the public).

From Hell (2001) Crime, Horror

Director: Albert Hughes and Allen Hughes.

Starring: Johnny Depp, Heather Graham and Ian Holm.
In Victorian London, a troubled clairvoyant police detective investigates the murders by Jack the Ripper.

Location used: Scenes filmed at Goldings in Waterford (not open to the public).

Golden Age (2007) Drama

Director: Shekhar Kapur.

Starring: Cate Blanchett and Clive Owen.
An exploration of the relationship between Elizabeth I and the adventurer Sir Walter Raleigh.

Location used: Hatfield House.

Gosford Park (2001) Crime, Drama

Director: Robert Altman.

Starring: Jude Law, Alan Bates and Helen Mirren.
A look at the British class system in this intelligent murder mystery set in the 1930's. A wealthy couple invites friends, relatives and acquaintances to their mansion in the country for a weekend of relaxation and hunting.

Location used: Scenes were filmed at Wrotham Park, nr. Potter's Bar (not open to the public).

Harry Potter and the Chamber of Secrets (2002)

Adventure, Fantasy

Director: Chris Columbus.

Starring: Daniel Radcliffe, Emma Watson and Rupert Grint.
The second film in the best-selling books about a young boy called Harry Potter, who discovers he is a wizard. When he attends 'Hogwarts', the school of witchcraft and wizardry, he embarks on a series of magical adventures.

Location used: The Burrow - the rural home of the Weasley family was shot at the Ayot Estate, nr. Welwyn Garden City.

Harry Potter and the Goblet of Fire (2005) Adventure, Fantasy

Director: Mike Newell.

Starring: Daniel Radcliffe, Emma Watson and Rupert Grint.
The fourth film in the best-selling books about a young boy called Harry Potter, who discovers he is a wizard. When he attends 'Hogwarts', the school of witchcraft and wizardry, he embarks on a series of magical adventures.

Location used: Ashridge Estate, nr. Berkhamsted.

Haunted Honeymoon (1986) Comedy, Horror

Director: Gene Wilder.

Starring: Gene Wilder, Gilda Radner and Dom DeLuise.
Haunted house comedy, in which Wilder takes his fiancée to meet his relations on a country estate before they are married.

Location used: Knebworth House, nr. Stevenage.

The History Boys (2006) Comedy

Director: Nicholas Hytner.

Starring: Frances de la Tour and Richard Griffiths.
An unruly class of gifted and charming teenage boys pursue of sex, sport and higher education.

Location used: Watford Boys Grammar School
(not open to the public).

The Hitchhiker's Guide to the Galaxy (2005) Adventure, Comedy

Director: Garth Jennings.

Starring: Martin Freeman, Sam Rockwell and Mos Def.
Adapted from the tale by Douglas Adams. Englishman Arthur Dent is whisked off an amazing journey by his friend (and alien) Ford Prefect.

Location used: Scenes were filmed at Bovingdon airfield, nr. Hemel Hempstead), and Hare Street Village, nr. Buntingford (The Beehive pub).

Hot Fuzz (2007) Action, Comedy

Director: Edgar Wright.

Starring: Simon Pegg and Nick Frost.
Jealous colleagues conspire to get a top London cop transferred to a small town and paired with a witless new partner.

Location used: Bushey Campus (not open to the public) and Hatfield House.

The Hours (2002) Drama

Director: Stephen Daldry.

Starring: Meryl Streep, Nicole Kidman and Julianne Moore.
Two different stories set at parties - and linked around the life of famous writer Virginia Woolf (played by Nicole Kidman).

Location used: A house close to Luton doubled as Woolf's Richmond home, whilst director 'Daldry' used his own Hertfordshire home to double as Monks House in Sussex, where Woolf spent her final days. Not open to the public.

The Importance of Being Earnest (2002) Comedy, Drama

Director: Oliver Parker.

Starring: Colin Firth, Rupert Everett and Judi Dench.
Adaptation of Oscar Wilde's tale. In 1890's London, two friends use the same pseudonym ("Ernest") for their on-the-sly activities.

Location used: Scenes were filmed at Hatfield House.



Hatfield House



Johnny English (2003) Action, Comedy

Director: Peter Howitt

Starring: Rowan Atkinson, Natalie Imbruglia and John Malkovich.

Comedy based on a bungling secret agent who is accidentally mistaken for Britain's greatest spy. He gets launched into a James Bond style mission to save the UK.

Location used: Scenes shot around the county (including Bovington airfield, nr. Hemel Hempstead for a stunt involving helicopters). Leavesden Park (nr. Watford) doubled for Canary Wharf; whilst the Cathedral and Abbey Church of St. Alban (St. Albans) doubled as Westminster Abbey in the movie finale.

Kidulthood (2005) Drama

Director: Menhaj Huda.

Starring: Noel Clarke and Nicholas Hoult.

An urban contemporary drama that deals with teenage issues.
Location used: Scenes shot at a private house in Essendon (nr. Hatfield). Not open to the public.



The Lair of the White Worm (1988) Horror

Director: Ken Russell.

Starring: Amanda Donohoe, Hugh Grant and Catherine Oxenburg.

Based on the last book by Bram Stoker. This campy horror comedy tells of the connection between an ancient dragon legend and a strange cult that worships a giant ravenous subterranean white worm.

Location used: Knebworth House, nr. Stevenage.



Wrotham Park



Lara Croft: Tomb Raider (2001) Action, Fantasy

Director: Simon West.

Starring: Angelina Jolie, Jon Voight and Ian Glen.

The popular video game is turned into a big-budget adventure. Lara Croft is a British aristocrat, who leads a double life as a acquirer of lost antiquities. The film follows her quest for an ancient relic which has the power over time.

Location used: Exterior shots for Lara's home were filmed at Hatfield House.

Lara Croft Tomb Raider: The Cradle of Life (2003)

Action, Fantasy

Director: Jan de Bont.

Starring: Angelina Jolie, Gerard Butler and Ciaran Hinds.

The second film based on the popular video game. Lara Croft is a British aristocrat, who leads a double life as a acquirer of lost antiquities. The film follows her quest to save Pandoras box.

Location used: Exterior shots for Lara's home were filmed at Hatfield House. There are also scenes filmed inside - including a stick fight along the stately library.

Lucky Break (2001) Comedy/Crime

Director: Peter Cattaneo.

Starring: James Nesbitt, Olivia Williams and Timothy Spall.

Two unsuccessful small-time crooks decide to pull off a bank job, but are both captured. In prison they get involved in the production of a musical, which they use as a cover to escape.

Location used: An empty psychiatric hospital near St. Albans doubled as a prison.

The Martins (2001) Comedy

Director: Tony Grounds.

Starring: Lee Evans, Kathy Burke and Linda Bassett.

A man who wants to give his family the good things in life decides to start stealing them in this dark comedy.

Location used: The Martins' family home is at Hatfield, one of a group of houses behind The Galleria Outlet Centre. *Not open to the public.*



Mean Machine (2001) Comedy, Drama

Director: Barry Skolnick.

Starring: Vinnie Jones, David Kelly and David Hemmings.

A soccer star jailed for assault leads a group of inmates in a match against prison guards.

Location used: Napsbury Hospital in St. Albans.

Mike Bassett: England Manager (2001) Comedy, Sport

Director: Steve Barron.

Starring: Ricky Tomlinson, Amanda Redman and Bradley Walsh.

The manager of England's national football team unexpectedly dies, and suddenly the search is on for a replacement - found in the unlikely guise of Norwich City manager Mike Bassett. A funny mockumentary.

Location used: Scenes were shot in St. Albans, which doubled for Norwich (including the town hall, and parade after they win the FA Cup).

The Monster Club (1980) Comedy, Horror

Director: Roy Ward Baker.

Starring: Vincent Price, John Carradine and Anthony Steel.

A writer of horror stories is invited to a monster club by a mysterious old gentleman. There three gruesome stories are told to him.

Location used: Knebworth House (nr. Stevenage).

The Mummy Returns (2001) Action, Adventure

Director: Stephen Sommers.

Starring: Brendan Fraser, Rachel Weisz and John Hannah.

The sequel to the hugely popular film, set eight years after the original. The evil Imhotep is resurrected in London to resume his quest for immortality - but this time there is a new threat in the shape of The Scorpion King.

Location used: Bovingdon airfield, nr. Hemel Hempstead.

My Brother Tom (2001) Drama

Director: Dom Rotheroe.

Starring: Ben Whitshaw, Adrian Rawlins and Jenna Harrison.

Intriguing and powerful low-budget English fable with a teenage boy and girl finding solace in each other in the face of horrifying emotional trauma. Together they escape the confines of their suburban childhood.

Location used: The film was shot around Watford, St. Albans and Hatfield.



St. Albans

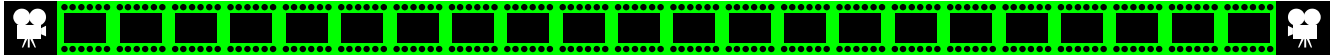
Nicholas Nickleby (2002)

Director: Douglas McGrath.

Starring: Charlie Hunnam, Jamie Bell and Christopher Plummer.

Adaptation of the Charles Dickens novel. A young compassionate man struggles to save his family and friends from the abusive exploitation of his coldheartedly uncle.

Location used: Scenes filmed at Berkhamsted Park and Bushey Campus (*not open to the public*).



Peter's Friends (1992) Comedy/Drama

Director: Kenneth Branagh.

Starring: Kenneth Branagh, Emma Thompson and Stephen Fry. Ten years after they were members of a music/comedy troupe at Cambridge University, a group of friends in their early 30's gather at the estate of Peter Morton, who's invited them there for a reunion.

Location used: Scenes were filmed at Wrotham Park, nr. Potter's Bar (*not open to the public*).

Princess Caraboo (1994) Comedy, Drama

Director: Michael Austin.

Starring: Phoebe Cates, Jim Broadbent and Kevin Kline. Loosely based on an actual incident, this tells of a young woman who suddenly appears in the English countryside in 1817, wearing exotic clothes and talking gibberish. She claims to be a princess of Japanese origin named 'Caraboo'.

Location used: Scenes were filmed at Wrotham Park, nr. Potter's Bar (*not open to the public*).

Provoked (2005) Drama

Director: Jag Mundhra.

Starring: Miranda Richardson, Aishwarya Raj and Naveen Andrews.

The true story of a Punjabi woman named Kiranjit Ahluwalia who leaves India to marry a London-based guy, only to be badly abused. She ends up in prison for murdering her husband.

Location used: Bushey Campus (*not open to the public*).

Revelation (2001) Adventure, Fantasy

Director: Stuart Urban.

Starring: Udo Kier, Terence Stamp and Liam Cunningham. Biblical prophecy meets 21st C. science in a mystical quest to find an ancient relic known as the 'Loculus' - that has been fought over by the forces of light and darkness through the years. A millionaire mogul wants to destroy the relic, but also in pursuit is a demonic sentinel.

Location used: Two locations in the west of the county.

Saving Private Ryan (1998) Drama, War

Director: Steven Spielberg.

Starring: Tom Hanks, Edward Burns and Matt Damon. Powerful re-creation of the D-Day invasion and the immediate aftermath. The film follows the search for the surviving member of the five Ryan brothers (the others all killed during the war), so that he can be safely returned to his family.

Location used: Vast sets were constructed on the former British Aerospace facility at Hatfield (*not open to the public*) - including a bomb damaged French town (Ramelie) with bridge, river, cathedral and remains of a town square.

The Shooting Party (1985) Drama

Director: Alan Bridges.

Starring: James Mason, Edward Fox and John Gielgud. Adapted from the novel by Isabel Colgate. In the summer before World War I, a British nobleman invites an assorted group of acquaintances for a weekend shooting party on his huge estate. It ends with a unexpected tragedy.

Location used: Knebworth House, nr. Stevenage.

Spy Game (2001) Action,Thriller

Director: Tony Scott.

Starring: Robert Redford, Brad Pitt and Catherine McCormack. A veteran CIA spy learns that his one-time protégé is being held in a prison in China. He decides to mount a rescue bid - his most dangerous mission yet.

Location used: The exteriors of the GlaxoSmithKline research centre (*not open to the public*) at Stevenage, doubled as the entrance to the CIA headquarters in Washington, USA.

Stardust (2007) Adventure, Fantasy

Director: Matthew Vaughn.

Starring: Robert De Niro, Claire Danes and Michelle Pfeiffer. In a countryside town bordering on a magical land, a young man makes a promise to his beloved to retrieve a fallen star.

Location used: Ashridge Estate, nr. Berkhamsted.



Ashridge Estate



Thunderpants (2002) Comedy, Fantasy

Director: Peter Hewitt.

Starring: Simon Callow, Stephen Fry and Rupert Grint. A young boy's amazing ability to break wind leads him first to fame, then to death row - before it helps him to fulfill his ambition of becoming an astronaut.

Location used: Cumberland House in St. Albans - *not open to the public*.

To Kill a King (2003) Drama

Director: Mike Barker.

Starring: Tim Roth, Dougray Scott and Olivia Williams. Historical drama. A man is told between loyalty to his wife and his King.

Location used: Scenes filmed at Hatfield House.

Topsy-Turvy (1999) Comedy, Drama

Director: Mike Leigh.

Starring: Jim Broadbent, Alan Corduner and Lesley Manville. Biography of comic opera composers W. S. Gilbert and Arthur Sullivan. Much of the film is devoted to the staging of 'The Mikado'.

Location used: Scenes shot at the former Langleybury School (a Georgian house), nr. Watford (*not open to the public*).

Vanity Fair (2004) Drama, Romance

Director: Mira Nair.

Starring: Gabriel Byrne, Reese Witherspoon and Rhys Ifans. Most recent film version of William Makepeace Thackeray's satirical novel about middle-class London life and manners at the beginning of the 19th C.

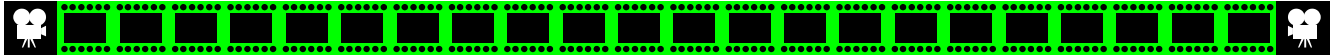
Location used: Scenes were filmed at Wrotham Park, nr. Potter's Bar (*not open to the public*).

Wilde (1997) Biography, Drama

Director: Britain Gilbert.

Starring: Stephen Fry, Jude Law and Vanessa Redgrave. The story of Oscar Wilde - genius, poet, playwright and first modern man.

Location used: Knebworth House, nr. Stevenage.



The Wings of the Dove (1997) Drama, Romance

Director: Iain Softley.

Starring: Helena Bonham Carter, Linus Roache and Alison Elliott.

Based on the Henry James novel - this is a tale of love, money and deception. After the death of her mother, a young girl is looked after by her wealthy aunt. Later she falls in love with a poor journalist, much to her aunt's disapproval.

Location used: Scenes were filmed at Wrotham Park, nr. Potter's Bar (*not open to the public*).



Yaadein (2001) Romance

Director: Subhash Ghai.

Starring: Hrithik Roshan, Kareena Kapoor and Jackie Shroff. Romantic 'Bollywood' film. Yaadein is about being in love with your family, just by adding the element of friendship.

Location used: Scenes were filmed in Rickmansworth.

Television



As Time Goes By (1992-2005)

Channel: BBC.

Starring: Judi Dench and Geoffrey Palmer.

Romantic comedy - Lionel and Jean were lovers many years ago at the time of the Korean War. They are then reunited many years later.

Location used: One episode has scenes at Aldenham and Letchmore Heath.

Auf Wiedersehen Pet (1983-2004)

Channel: ITV/BBC.

Starring: Tim Healy, Kevin Whatley and Jimmy Nail.

The adventures of a gang of British brick layers trying their luck aboard. Combines black humour with moments of drama.

Location used: Scenes filmed at a private manor house in Radlett (*not open to the public*).

The Avengers (1961-1969)

Channel: ITV.

Starring: Patrick Macnee, Honor Blackman, Diana Rigg and Linda Thorson.

Cult 1960's series - featuring a British suave eccentric agent (John Steed) and his athletic female partners: Cathy Gale, Emma Peel and Tara King.

Location used: Many scenes shot throughout the county - Aldbury (nr. Tring), Ashridge Business School (nr. Berkhamsted), Borehamwood/Elstree, Bovington airfield (nr. Hemel Hempstead), Bocket Hall (nr. Welwyn - *not open to the public*), Knebworth House (nr. Stevenage), St. Albans and Watford.

Band of Brothers (2001)

Channel: UStv/BBC.

Starring: Damian Lewis, Ron Livingston and Donnie Wahlberg. Wartime mini-series - a follow-up to the film 'Saving Private Ryan'. The series follows the real-life saga of a US paratroop unit's part in the D-Day landings.

Location used: Most of the filming was done in the county, with a number of spectacular sets constructed on the former British Aerospace facility at Hatfield (*not open to the public*) - the most impressive being a 'modular' town, which was changed over the course of production, from Northern France to Belgium, Holland and finally Germany. Camp Toccoa in Georgia, Hells Highway (Eindhoven to Arnhem) and the Zetten Dyke in Holland were also constructed here. The huge hangers were used to build the Ardennes Forest for the Battle of Bulge and the Paris street scenes. Close by is the parkland of Hatfield

House, and within the pine woods, an area was cleared to build a replica of the Landsberg concentration camp. To the west of the county, the area around Wilstone (nr. Tring) replicated Brecourt Manor in Normandy; whilst the Ayot Estate (nr. Welwyn Garden City) saw a major tank battle.



Bleak House (2005)

Channel: BBC.

Starring: Gillian Anderson, Alun Armstrong and Charles Dance. A new 'soap opera' style serial version of the classic Charles Dickens novel.

Location used: Scenes were filmed at Balls Park (Hertford).

The Brief (2004-2005)

Channel: ITV.

Starring: Alan Davies, Cherie Lunghi and Christopher Fulford.

Series about a successful criminal barrister with a chaotic personal life.

Location used: Bushey Campus (*not open to the public*).

The Broker's Man (1997)

Channel: BBC.

Starring: Kevin Whatley.

Series of two-part mysteries, involving Jimmy Griffin an ex-policeman who now uses his detective skills whilst working for insurance companies.

Location used: An old school was used as a police station.



Bugs (1995-1998)

Channel: BBC.

Starring: Craig McLachlan, Jaye Griffiths and Jesse Birdsall.

Action adventure series, featuring a trio of agents who work for a secret government organisation (The Bureau) that fights baddies.

Location used: Filmed at several locations throughout the county, such as the former Tewin Water School, nr. Welwyn Garden City (*not open to the public*).

The Canterville Ghost (1997)

Channel: ITV.

Starring: Ian Richardson, Celia Imrie and Rik Mayall.

TV version of Oscar Wilde's satirical comedy. It tells of a spectral presence, whose ancestral home is brought by a family of Americans.

Location used: Knebworth House, nr. Stevenage.

Celeb (2002)

Channel: BBC.

Starring: Harry Enfield and Amanda Holden.

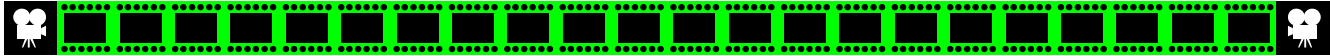
Comedy series about Gary Bloke, an aging rock star who is determined to carry on behaving like a teenager. He lives with its glamorous wife.

Location used: Knebworth House, nr. Stevenage.



Brocket Hall





The Champions (1968)

Channel: ITV.

Starring: William Gaunt, Stuart Damon and Alexandra Bastedo. 1960's action adventure series, featuring three secret agents working for Nemesis - an international intelligence organisation based in Geneva.

Location used: Many scenes shot throughout the county - Aldbury (nr. Tring), Knebworth House (nr. Stevenage) and Moor Park Golf Club (Batchworth).



The Comic Strip Presents - Four Men in a Car (1998)

Channel: Channel 4.

Starring: Rick Mayall, Adrian Edmundson and Peter Richardson. Zany comedy about four ambitious salesmen trying to reach Swindon in a car trip beset by disasters.

Location used: Scenes were done on closed sections of the A1 and A41.

Daddy's Girl (2002)

Channel: ITV.

Starring: Martin Kemp, Denise Black and Trevor Fox. Psychological thriller. A young girl whose mother has gone missing, begins to have dreams in which she remembers her being murdered.

Location used: Scenes filmed at various locations - North Watford Cemetery, Bushey police station, Phasell's Wood (Hemel Hempstead), Ashridge Estate (nr. Berkhamsted) and Aldbury (nr. Tring).

Danger Man (1960-1961)

Channel: ITV.

Starring: Patrick MacGoohan. 1960's intrigue/espionage thriller. John Drake is a special operative for NATO, specialising in security assignments against any subversive element.

Location used: Knebworth House (nr. Stevenage).

Daniel Deronda (2002)

Channel: BBC.

Starring: Hugh Dancy, Edward Fox and Hugh Bonneville. Adaptation of the George Eliot novel. Set in London and Italy in the mid 19th C. it concerns relationships and identity.

Location used: Scenes were filmed at Wrotham Park, nr. Potter's Bar (*not open to the public*).

Dinotopia (2002)

Channel: UStv.

Starring: Tyron Leitso, Wentworth Miller and David Thewlis. Major TV mini-series, based on the best-selling children's books by James Gurney. It's about an island where talking dinosaurs and humans live together.

Location used: Ashridge Estate, nr. Berkhamsted.

Eastenders (1985-)

Channel: BBC.

Starring: Wendy Richard, Barbara Windsor and Steve McFadden. Soap opera, following the stories of working-class East End folk. It is set in the fictitious Albert Square, part of the London Borough of Walford E20.

Location used: The main set is based at the BBC Elstree Studios (*not open to the public*) in Borehamwood. But some storylines have used nearby locations, such as the Aberford and Meadow Parks in Borehamwood, Shenley church (Michelle and Lofty's marriage), Watford Cemetery (where Arthur Fowler is buried) and Hatfield Courthouse (court appearance of Grant Mitchell).

Every Woman Knows a Secret (1999)

Channel: ITV.

Starring: Siobhan Redmond, Paul Bettany and Tom Chadbon. Drama based on the novel by Rosie Thomas. When a 40-something divorcee's son is killed in a drink-drive crash, comfort comes from an unexpected source.

Location used: Two-thirds of scenes were filmed in the county.

Foyles War (2002-2007)

Channel: ITV.

Starring: Michael Kitchen.

Set during World War II, Detective Chief Superintendent Christopher Foyle spends the war years dealing with crime in a small coastal town.

Location used: Scenes were filmed at St. Albans (Fishpool Street), the village of Standon (nr. Ware) and Hertford (Balls Park).

Frances Tuesday (2004)

Channel: ITV.

Starring: Tamzin Outhwaite and Douglas Henshall.

A gangsters moll changes her identity to go on the run after becoming informant on her boyfriend - who is just about to be released from prison.

Location used: Scenes filmed at the former Hillside School in Borehamwood (*not open to the public*).

The Gentleman Thief (2001)

Channel: BBC.

Starring: Nigel Havers, Michael French and Sir John Mills.

One hour pilot of A.J. Raffles based drama. Nigel Havers plays the infamous bachelor-about-town and high society thief, with a taste for diamonds.

Location used: Scenes shot at the former Langleybury School (a Georgian house), nr. Watford (*not open to the public*).

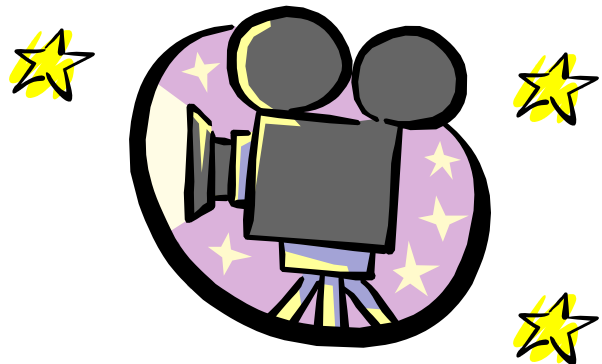
Hex (2004-2006)

Channel: Sky One.

Starring: Jemima Rooper, Christina Cole and Michael Fassbender.

A series featuring a girl with supernatural powers, and how she deals with the trials and tribulations of teenage life in a boarding school.

Location used: Bushey Campus (*not open to the public*).

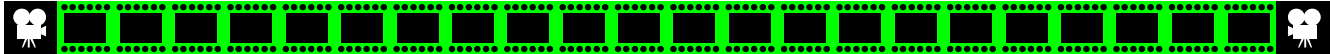


Holby City (1999-)

Channel: BBC.

Starring: George Irving, Hugh Quarshie and Amanda Mealing. Hospital based drama/soap set at fictional 'Holby City'.

Location used: The main set is based at the BBC Elstree Studios (*not open to the public*). But some storylines have used nearby locations, such as the Ashridge Estate (nr. Berkhamsted), Hunton Park (King's Langley), Balls Park (Hertford), Enigma pub and Centennial Park (Borehamwood).



Hope and Glory (1999-2000)

Channel: BBC.

Starring: Lenny Henry.

Drama series about Ian George, the youngest and one of the most successful head teachers in Britain. He is assigned to Hope Park Comprehensive.

Location used: Scenes shot at the former Langleybury School (a Georgian house), nr. Watford (*not open to the public*).



In Deep (2001-2003)

Channel: BBC.

Starring: Nick Berry, Stephen Tompkinson and Fiona Allen. Police drama following two undercover cops who infiltrate hard-core criminal operations. They have no fixed abode and no safety net if things goes wrong.

Location used: Scenes shot around St. Albans and Watford.



The Inspector Lynley Mysteries (2000-)

Channel: BBC.

Starring: Nathaniel Parker and Sharon Small.

Based on the novels by Elizabeth George, this drama series features Scotland Yard Detective Inspector Thomas Lynley (who is also the 8th Earl of Asherton).

Location used: The interiors of a large empty Elizabethan house in Hatfield doubled for the main location in Yorkshire (*not open to the public*). Scenes were also filmed at Balls Park (nr. Ware).

Inspector Morse (1987-2000)

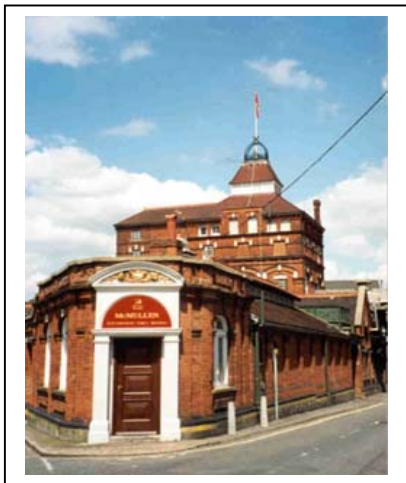
Channel: ITV.

Starring: John Thaw and Kevin Whatley.

Hugely popular detective series - centred around a grouchy, but cultured police detective and his easy going partner investigating crimes in the Oxford area.

Location used: Scenes shot at Brocket Hall (nr. Welwyn - *not open to the public*), Aldbury (nr. Tring), Hertford (McMullen Brewery - *not open to the public*), St. Albans (Fighting Cocks pub and cathedral), and Wrotham Park, nr. Potter's Bar (*not open to the public*).

McMullen Brewery,
Hertford



Jane Eyre (1997)

Channel: ITV.

Starring: Samantha Morton, Ciaran Hinds and Gemma Jones.

Classic re-telling of the Charlotte Bronte novel. The story follows a orphan who becomes a governess, and then finds herself falling in love with the local lord.

Location used: Knebworth House, nr. Stevenage.

Jonathan Creek (1997-)

Channel: BBC.

Starring: Alan Davies, Julia Sawalha and Caroline Quentin. Quirky drama series following the adventures of Jonathan Creek, who worked as an assistant for a top illusionist - but in-fact is really the brains behind the act. He soon finds that his mind is also good at solving baffling crimes. He lives in an East Anglian windmill.

Location used: Ashridge Estate, nr. Berkhamsted.

Judge John Deed (2001-)

Channel: BBC.

Starring: Martin Shaw, Jenny Seagrove and Christopher Cazenove.

Stories about a judge - who is not afraid to question the establishment.

Location used: Scenes filmed at The Mount Prison, nr. Hemel Hempstead (*not open to the public*).

Kavannagh QC (1994-2001)

Channel: ITV.

Starring: John Thaw, Lisa Harrow and Geraldine James.

Series of courtroom dramas featuring battling barrister James Kavanagh, a talented working-class man who defends the underdog. But his personal life is far from perfect - his wife is having an affair with another lawyer, and his children are up to all sorts of tricks.

Location used: Scenes were shot at the courthouse in Hatfield.

Lady Chatterley (1993)

Channel: BBC.

Starring: Sean Bean, Joely Richardson and James Wilby.

Based on the novel by D. H. Lawrence. Lady Chatterley's husband is paralyzed during the war - and she faces the prospect of living the rest of her life completely unfulfilled sexually. She then meets Oliver Mellors, the family gamekeeper, with whom she begins an affair.

Location used: Scenes were filmed at Wrotham Park, nr. Potter's Bar (*not open to the public*).

The Last Detective (2003)

Channel: ITV.

Starring: Peter Davidson and Sean Hughes.

Series featuring down-on-his-luck private eye 'Dangerous Davies'.

Location used: Bushey Campus (*not open to the public*).

Lewis (2005-)

Channel: ITV.

Starring: Kevin Whatley.

Spin off series from Inspector Morse - centred on his sidekick Inspector Lewis.

Location used: Scenes shot at Gaddesdon Place (Hemel Hempstead) (*not open to the public*).

Little Britain (2003-)

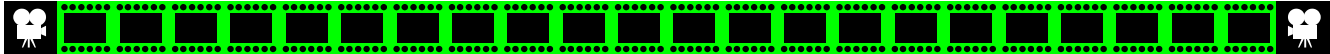
Channel: BBC.

Starring: Matt Lucas and David Walliams.

Award-winning sketch show - featuring an array of mad and quirky characters.

Location used: Scenes filmed at Gaddesdon Place (Hemel Hempstead) (*not open to the public*), Bushey Campus (*not open to the public*), Potters Bar Health Club and Aldenham village (nr. Elstree).





Lorna Doone (2000)

Channel: BBC.

Starring: Martin Clunes, Amelia Warner and Richard Coyle.
R. D. Blackmore's novel about forbidden love in 17th C. England. Lorna is part of the aristocratic and lawless Doone family who rule the local countryside. But conflict arises when she falls in love with John Ridd, a young farmer.

Location used: Ashridge Estate, nr. Berkhamsted.

The Lost Prince (2003)

Director: Stephen Poliakoff.

Starring: Miranda Richardson, Michael Gambon and Bill Nighy.
The true story of the British Royal Prince locked away because he had epilepsy. He was the youngest child of George V and Queen Mary.

Location used: Woodhall Park at Watton-at-Stone (nr. Hertford) doubled for the Sandringham Estate (Norfolk) marquee and shoot scenes. *Not open to the public.*

Love in a Cold Climate (2001)

Channel: BBC.

Starring: Rosamund Pike, Sheila Gish and Celia Imrie.
Adaptation of the Nancy Mitford novel. The story follows the fortunes of three well-bred girls as they pursue love in their own ways.

Location used: Scenes (a wedding reception) were filmed at Wrotham Park, nr. Potter's Bar (*not open to the public*).

Lovejoy (1986-1994)

Channel: BBC.

Starring: Ian McShane, Dudley Sutton and Phyllis Logan.
Based on the novels by Essex writer Jonathan Gash, this comedy drama was set around the adventures of loveable antiques rogue 'Lovejoy'. Almost every episode featured locations in the East of England (notably in Essex and Suffolk). Lovejoy lived in a pretty country cottage, and travelled around in a battered Morris Minor called 'Miriam'. His close friends were tweed-dressed Tinker Dill and young apprentice Eric Catchpole. He also had relationships with local aristocrat Lady Jane Felsham, and later auctioneer Charlotte Cavendish.

Location used: Scenes filmed at Bishop's Stortford, Hertford, Albury (nr. Tring), Knebworth House (nr. Stevenage), Wrotham Park (nr. Potter's Bar - *not open to the public*) and The Pelham villages (nr. Bishop's Stortford).



Hertford Castle



Madame Bovary (2000)

Channel: BBC.

Starring: Eileen Atkins, Keith Barron and Hugh Bonneville.
A woman with high hopes of romance and passion marries a widowed country doctor. But she is soon bored, and takes up with a series of lovers

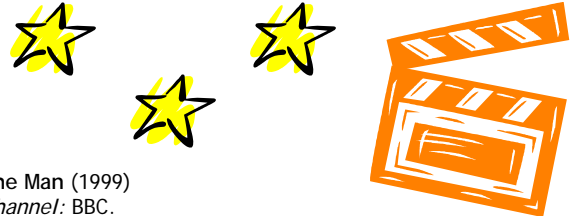
Location used: Ashridge Estate, nr. Berkhamsted.

The Magical Legend of the Leprechauns (1999)

Channel: UStv.

Starring: Randy Quaid, Whoopi Goldberg and Roger Daltery.
Television mini-series. An American businessman rents a cottage in Ireland, only to find out that it is inhabited by leprechauns.

Location used: Ashridge Estate, nr. Berkhamsted.



The Man (1999)

Channel: BBC.

Starring: Lenny Henry.

The story of Dennis Jackson, a flamboyant, singing travel agent. His shop is based in a close-knit community, where nobody takes him seriously. Then his shop wins the Midlands Travel Agent of the Year, and his life takes off.

Location used: Shops in Chorleywood High Street were used.

Merlin (1998)

Channel: UStv.

Starring: Sam Neill, Helena Bonham Carter and John Gielgud.
The legend of King Arthur, from the perspective of the king's wizard - Merlin. The story runs from Arthur gaining Excalibur to the plot of Morgan Le Fey.

Location used: Partially shot at the Ashridge Estate, nr. Berkhamsted, where a hill was used to show Merlin's army going into battle.

Midsummer Murders (1997-)

Channel: ITV.

Starring: John Nettles.

Murder mysteries (with a humorous twist) set in the fictional idyllic English county of Midsummer. Featuring a veteran DCI and his young sergeant.

Location used: Scenes filmed at Rickmansworth (police station) and Bushey (Sparrow Herne mansion - *not open to the public*).

Murder in Mind (2001-2003)

Channel: BBC.

Starring: Different actors/characters for each self-contained story. Series of psychological thrillers - the theme linking each episode is death in suspicious circumstances. Will they get away with the crime or not?

Location used: Several locations have been used, including the former Langleybury School (a Georgian house), nr. Watford (*not open to the public*).

Murder Rooms (The Dark Beginnings of Sherlock Holmes) (2000)

Channel: BBC.

Starring: Ian Richardson and Charles Edwards.

Series of 19th C. period dramas, featuring the stories of the 'real' Sherlock Holmes - the pioneering forensic detective Joseph Bell, and his medical student, Arthur Conan Doyle.

Location used: A large Georgian house in Elstree was used for several episodes of filming (*not open to the public*).

Murder in Suburbia (2004-2005)

Channel: ITV.

Starring: Caroline Catz and Lisa Faulkner.

Murder mystery series featuring two young female detectives.

Location used: Scenes filmed at the former Hillside School in Borehamwood (*not open to the public*).



The Persuaders (1971-1972)

Channel: ITV.

Starring: Roger Moore and Tony Curtis.

Series set around the adventures of two millionaire playboys who are teamed together by a judge to investigate crimes which the police can't solve.

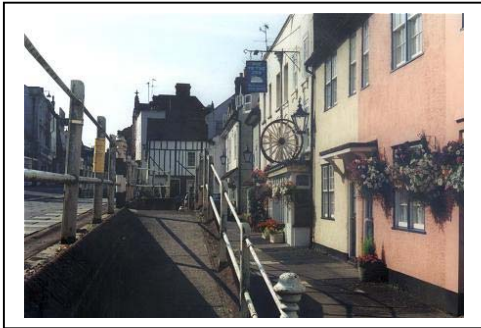
Location used: Scenes shot throughout the county - Bovington (nr. Hemel Hempstead), Knebworth House (nr. Stevenage) and Watford.

Pie in the Sky (1994-1997)

Channel: BBC.

Starring: Richard Griffiths, Maggie Steed and Malcolm Sinclair. Drama series featuring Detective Inspector Henry Crabbe, who retires to pursue a new career in cooking - opening a restaurant called 'Pie in the Sky'. Unfortunately he is blackmailed into continuing to help in police matters.

Location used: The restaurant exterior is at Hemel Hempstead Old Town.



Hemel Hempstead Old Town



Playing the Field (1998-2002)

Channel: BBC.

Starring: Lesley Sharp, Elizabeth Spriggs and Ricky Tomlinson. Popular drama following the highs and lows of a South Yorkshire woman's football team 'The Castlefield Blues' - both on and off the pitch. We discover the personal lives of the players and their families, and the passion of achieving their ultimate goal... to win the Women's FA Cup.

Location used: Filmed throughout the county.

Porridge (1973-1977)

Channel: BBC.

Starring: Ronnie Barker, Richard Beckinsale and Fulton Mackay. Classic comedy set in Slade Prison - following the comedy escapades of Norman Stanley Fletcher his young cell-mate Lennie Godber and Mr Mackay, the regimental chief warden.

Location used: The opening titles feature the gatehouse (*not open to the public*) from the old prison, and later council works in Victoria Road, St. Albans.

The Prisoner (1967-1968)

Channel: ITV

Starring: Patrick McGeehan.

Cult mystery drama. A resigned secret agent is abducted to a bizarre prison where the warders are determined to break him.

Location used: Scenes shot at Borehamwood, Shenley and South Mimms.

The Professionals (1977-1983)

Channel: ITV.

Starring: Lewis Collins and Martin Shaw.

Cult 1970/80's crime action drama, featuring the lives of Bodie and Doyle, the top agents for Britain's CI5.

Location used: Brocket Hall, nr. Welwyn (*not open to the public*).

Randall and Hopkirk Deceased (1969-1971)

Channel: ITV.

Starring: Mike Pratt and Kenneth Cope.

Original 1960/70's series, featuring detectives Jeff Randall and Marty Hopkirk.

Location used: Scenes filmed at St. Albans, Shenley and Watford.

Randall and Hopkirk Deceased (2000-2001)

Channel: BBC.

Starring: Bob Mortimer, Vic Reeves and Emilia Fox.

Update of the cult 1960's series. It follows the private detective investigations of Marty Hopkirk, and his now 'dead' partner Jeff Randall, who is a ghost.

Location used: Several episodes have been filmed in the county. Scenes in 'Whatever Possessed You' were shot at Goldings in Waterford (*not open to the public*). In 'Revenge of the Bog People', Professor Doleman's fancy Roman pad is Wrotham Park, nr. Potter's Bar (*not open to the public*). In 'O Happy Isle', the interior scenes of the police station are Goldings in Waterford again. Whilst the exterior shots of Berry Pomeroy's Hall were Hillfield Castle, nr. Watford (*not open to the public*). The brewery featured is McMullen and Sons in Hertford (*not open to the public*). In 'Pain Killers', the interior scenes of the PAIN corporation laboratory were shot at Bushey Grange, nr. Watford (*not open to the public*).

Rosemary and Thyme (2003-)

Channel: ITV.

Starring: Pam Ferris and Felicity Kendal.

Series featuring two lady gardener's who turn detective.

Location used: Micklefield Hall, nr. Rickmansworth (*not open to the public*).

The Saint (1962-1969)

Channel: ITV.

Starring: Roger Moore.

Cult 1960's series featuring Simon Templar - a modern day Robin Hood.

Location used: Scenes shot at Aldbury (nr. Tring), Elstree, St. Albans, Shenley and Watford.

Saxondale (2006)

Channel: BBC.

Starring: Steve Coogan.

Comedy series featuring Tommy Saxondale, an ex-roadie with anger management issues and a pest control business

Location used: Bushey Campus (*not open to the public*), Charter Place Shopping Centre (Watford), Watford Business Park and West Hertfordshire College (Watford)

The Scold's Bridle (1998)

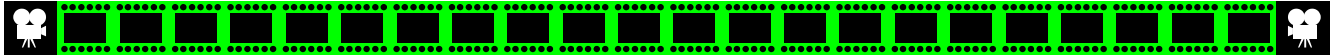
Channel: BBC.

Starring: Miranda Richardson, Bob Peck and Douglas Hodge.

When a woman is found dead wearing the Scold's Bridle (a medieval form of repression used to silence nagging women), it seems like a case of suicide - but not everything is what it seems and dark secrets begin to emerge.

Location used: Benington Lordship Garden, nr. Stevenage.





The Shillingbury Tales (1980-1981)

Channel: ITV.

Starring: Robin Nedwell, Diane Keen and Lionel Jeffries.
Comedy/drama set in the typical English village of Shillingbury.
Location used: Many scenes filmed at Aldbury (nr. Tring).

Spooks (2002-)

Channel: BBC.

Starring: Matthew Macfadyen, Keeley Hawes and Jenny Agutter.



Action-packed drama series set around the security service MI5.
Location used: Scenes filmed at the former Hillside School in Borehamwood (*not open to the public*).

Station Jim (2001)

Channel: BBC.

Starring: George Cole, Frank Finlay and Celia Imrie.



Tale based around a country railway station. A stray Jack Russell called 'Jim' comes to the rescue when an orphanage is threatened with closure.

Location used: An empty mansion house in the county doubles as a Victorian railway station (*not open to the public*).

Trial and Retribution II (1998)

Channel: ITV.

Starring: David Hayman and Kate Buffery.

Lynda La Plante drama following a crime from the first murder to the verdict in court. A serial killer is stalking women in London, but when the suspects are arrested, the police face a difficult task to get to the bottom of the mystery.

Location used: Many of the scenes were filmed in the southwest of the county.

Two Thousand Acres of Sky (2001-2003)

Channel: BBC.

Starring: Michelle Collins and Paul Kaye.

Drama series which sees a woman, her two children and their best friend seeking shelter on a small island. Here they build a new life.

Location used: A medical centre and cottage in the county doubled for locations in Scotland.

Ultimate Force (2002-)

Channel: ITV.

Starring: Ross Kemp.

Action adventure series following the exploits of Sergeant Henno Garvie and his colleagues who make up Red Troop.

Location used: Scenes filmed at Bovingdon airfield (nr. Hemel Hempstead).

Vanity Fair (1998)

Channel: BBC.

Starring: Natasha Little, Nathaniel Parker and Miriam Margolyes.

William Thackeray's 19th C. novel is brought to life in this lavish piece of period drama. It tells of Becky Sharp, a beautiful and manipulative girl who will do anything to climb up the social ladder. She is not born into the nobility of England - but is determined that she will become part of it before she dies.

Location used: A private house in the southwest of the county was used.

The Vice (1999-2003)

Channel: ITV.

Starring: Ken Stott, Caroline Catz and Gary Cooper.

Hard-hitting drama about the London Vice Squad, and how they tackle prostitution and its associated problems. The series depicted these issues in a frighteningly realistic manner.

Location used: Scenes shot in the Watford area.

Waking the Dead (2000-)

Channel: BBC.

Starring: Trevor Eve and Sue Johnston.

Series featuring a multi-discipline police team - the 'Cold Case Squad'. They investigate old, unsolved murder cases using modern methods.

Location used: Scenes were filmed in the county.

NORFOLK

Film



The Brothers of the Head (2005) Drama

Director: Keith Fulton and Louis Pepe.

Starring: Tom Bower and Sean Harris.

The story of conjoined twins Tom and Barry Howe - from the novel by Norfolk native Brian Aldiss. A tale of a freak show turned punk sensation.

Location used: Scenes were shot at Barningham Hall (nr. Holt). *Not open to the public.*

The Care of Time (1990) Drama

Director: John Howard Davies.

Starring: Christopher Lee, Michael Brandon and Ian Hogg.

A tale of murder mystery set in Miami USA. This TV film is based on the book (1981) by English crime writer Eric Ambler.

Location used: The seaside village of Hemsby (nr. Great Yarmouth) stood in for Miami Beach, USA.

A Cock and Bull Story (2005) Comedy

Director: Michael Winterbottom.

Starring: Steve Coogan, Gillian Anderson and Rob Brydon.

Adaptation of Laurence Sterne's 18th C. novel - depicting the life and times of the central character Tristram.

Location used: Filmed at Felbrigg Hall (nr. Cromer), Blickling Hall (nr. Aylsham), and Heydon Hall (nr. Aylsham) (*not open to the public*).



Blickling Hall



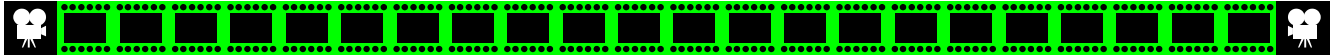
Conflict of Wings (1953) Comedy

Director: John Eldridge.

Starring: John Gregson, Muriel Pavlow and Kieron Moore.

The story of a small Norfolk village, where the residents are up in arms over plans to build an RAF airfield over the site of an ancient bird sanctuary.

Location used: Scenes were filmed in the county of Norfolk at Hickling (broad and Pleasure Boat Inn), Ludham (nr. Potter Heigham) and Wells-next-the-Sea.



Dad Savage (1998) Drama, Crime

Director: Betsan Evans Morris.

Starring: Patrick Stewart, Kevin McKidd and Helen McCrory.
British heist drama. Dad Savage is a country and western loving tulip farmer. His son has two friends who are recruited into his father's business. But they soon find out where Dad Savage has buried his money and try to steal it.

Location used: Scenes were filmed at Hunstanton and Wells-next-the-Sea.

The Dambusters (1955) War, Adventure

Director: Michael Anderson.

Starring: Richard Todd, Michael Redgrave and Ursula Jeans.
One of Britain's biggest box-office successes of 1955. This realistic film traces the development (by Dr Barnes Wallis) and use of the 'bouncing bombs' against the German 'Ruhr' series of dams during World War II.

Location used: Scenes filmed at Langham Airfield, nr. Holt.

Die Another Die (2002) Action

Director: Lee Tamahori.

Starring: Pierce Brosnan, Halle Berry and Toby Stephens.
The 20th James Bond adventure, starring Pierce Brosnan as the famous British secret agent 007. Features Korea, Hong Kong, Cuba, Iceland and London.

Location used: Scenes involving a Russian helicopter were filmed at RAF Marham. Whilst on the North Norfolk Coast, a Korean rice field (complete with crashed sports cars) was recreated at Deepdale Farm (Burnham Deepdale, nr. Hunstanton). This sequence is at the very end of the film.



Deepdale Farm

The Eagle has Landed (1976) Action

Director: John Sturges.

Starring: Michael Caine, Donald Sutherland and Robert Duvall.
Adaptation of the Jack Higgins' novel. In November 1943, Winston Churchill is all set to spend a weekend in a Norfolk country house. But when the Germans (under Hitler's orders) hear of the plans, they send a task force to kidnap him.

Location used: Scenes were filmed in Norfolk.

Full Metal Jacket (1987) Drama, War

Director: Stanley Kubrick.

Starring: Matthew Modine, Adam Baldwin and Vincent D'Onofrio.

Classic film, following the trials and tribulations of a platoon of Marine Corps who develop dehumanized personalities in their training - which then shows in their tour of duty in Vietnam.

Location used: Scenes (helicopter firing on workers in a paddy field) was filmed over The Norfolk Broads.



The Go Between (1970) Drama, Romance

Director: Joseph Losey.

Starring: Alan Bates, Julie Christie and Michael Redgrave.
Set in the 1900's, a young underprivileged boy spends his summer holidays with his upper-class friend at their Norfolk manor house. Here his friend's sister uses him to deliver notes setting up her illicit trysts with a local farmer.

Location used: Scenes filmed at Melton Constable Hall (*not open to the public*), Heydon Hall (*not open to the public*) and village (nr. Aylsham), Hickling Broad and Norwich (Maids Head Hotel, Cathedral, Tombland and the railway station).

The Grotesque (1995) Drama, Horror

Director: John Davidson.

Starring: Sting, Alan Bates and Theresa Russell.

Sir Hugo Coal is a grumpy, eccentric English gentlemen married to a rich American wife Harriet. Enter Fledge and his wife, the new family servants who set their sights on the Coal fortune, and devise a devious and murderous plan.

Location used: Scenes were filmed at Heydon Hall, nr. Aylsham (*not open to the public*).

Julia (1977) Drama

Director: Fred Zinnemann.

Starring: Jane Fonda, Vanessa Redgrave and Jason Robards, Jr.
The lifelong relationship between playwright Lillian Hellman and a wealthy girl called Julia, who turns her back on her upbringing to follow her ideals.

Location used: Scenes were filmed at the village of Winterton-on-Sea (nr. Great Yarmouth, where a chalet and garden was constructed to double as ones in 1930's Cape Cod, USA).

Out of Africa (1985) Biography, Drama

Director: Sydney Pollack.

Starring: Robert Redford, Meryl Streep and Klaus-Maria Brandauer.

The life of Danish author Isak Dinesen, who in the film is known by her married name, Karen Blixen-Flecke. In 1914, she moves with her husband to run a plantation in Africa. Here she falls in love with a white hunter.

Location used: The opening shots which seem to show Denmark, were actually filmed at the village of Castle Rising (nr. King's Lynn).

Revolution (1985) Adventure, War

Director: Hugh Hudson.

Starring: Al Pacino, Donald Sutherland and Nastassja Kinski.
Adventure story set against the background of the American War of Independence. A man falls in love with an aristocrat who deserts her class to fight alongside the rebels.

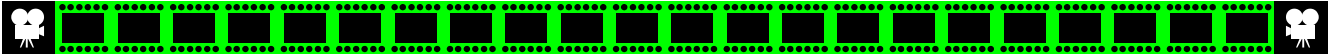
Location used: The main location was the town of King's Lynn (the area around Purfleet Quay), which was transformed to represent New York in the 18th C.

Shakespeare in Love (1998) Drama, Romance

Director: John Madden.

Starring: Gwyneth Paltrow, Joseph Fiennes and Geoffrey Rush.
Oscar-winning film which sees the playwright in a cold streak, having no written a hit in years. Then whilst putting together a new comedy, Shakespeare falls in love with the beautiful Lady Viola. This ignites his creativity - which leads to the writing of the timeless classic 'Romeo and Juliet'.

Location used: Towards the end of the film, Shakespeare is describing his latest play in which the heroine is shipwrecked and cast ashore on a desert island - we then see Gwyneth Paltrow walking from the sea across a beach. These scenes were filmed at Holkham Beach (nr. Wells-next-the-Sea). The nearby lake at Holkham Hall was used for the scene where Viola declares her love for Will.



Holkham Beach



Stardust (2007) Adventure, Fantasy

Director: Matthew Vaughn.

Starring: Robert De Niro, Claire Danes and Michelle Pfeiffer.

In a countryside town bordering on a magical land, a young man makes a promise to his beloved to retrieve a fallen star.

Location used: Scenes were filmed at Elm Hill in Norwich, which was turned into a fantasy town street.

Tarka the Otter (1979) Adventure, Drama

Director: David Cobham.

Starring: Edward Underdown, Peter Ustinov (narrator) and Peter Bennett.

Based on the classic novel by Henry Williamson - this film is set in 1920's England, and follows the life of an otter from birth to adulthood (seen through the animal's point of view). Drama comes from the ever present threat of human hunters, and from the vicious otter hound 'Deadlock'.

Location used: Scenes filmed at Bintree Mill, nr. Fakenham (*not open to the public*).



Television

A Fatal Inversion (1992)

Channel: BBC.

Starring: Douglas Hodge, Jeremy Northam and Saira Todd.

Chilling tale from Ruth Rendall. After Adam inherits a country house he and his friend decide to spend the summer there, with an assortment of other guests. A decade later, the bodies of a young woman and infant are found near the house - and as the police investigate, the past catches up with Adam.

Location used: Scenes were filmed in Norfolk.

The Adventures of Sherlock Holmes (1984-5; 1986-8; 1991; 1994)

Channel: ITV.

Starring: Jeremy Brett and Edward Hardwicke.

To many people this was the drama series which really brought to life Arthur Conan Doyle's famous detective. In 1987, came the story 'The Sign of Four'. This sees a lady receiving some pearls and a mysterious message - intrigued about what this means she goes to see Sherlock Holmes for advice. Soon Holmes and Watson are tracking down the secret of The Sign of Four.

Location used: Scenes were filmed at Burgh Castle, nr. Great Yarmouth.

Allo Allo (1982-1992)

Channel: BBC.

Starring: Gordon Kaye, Carmen Silvera and Vicki Michelle.

Popular comedy set during the Second World War, rich in innuendo and slapstick. Rene Artois owns a café in the French town of Nouvion. But when the Germans occupied the town, he find himself pulled between the local Nazi's and the French Resistance in ever more ridiculous plots and stories.

Location used: Scenes were filmed in Thetford Forest, and at Lynford Hall, nr. Mundford. A cobbled courtyard at the back of the hall was used as the Nouvion town square, with the 'Café Rene'. Whilst the hall's front was the German's chateau.



Lynford Hall

All the King's Men (1999)

Channel: BBC.

Starring: David Jason, Maggie Smith and William Ash.

Based on a true story, this drama is about the mysterious disappearance of the Sandringham Company (5th Battalion of the Norfolk Regiment) at Gallipoli in 1915. They were a group of volunteers (workers from the estate) who formed a unit to fight in World War I - commanded by Captain Frank Beck, George V's estate manager at Sandringham. Reputedly the men advanced into battle against the Turks, were enveloped in a strange mist and never seen again.

Location used: Scenes were filmed on the Royal estate at Sandringham and other locations in Norfolk, including Anmer, Cromer, West Newton, Sheringham and Deepdale Farm (Burnham Deepdale, nr. Hunstanton). David Jason and Maggie Smith dined in The Great Saloon at Holkham Hall (nr. Wells-next-the-Sea) for a scene. Whilst the east front and parterre at Blickling Hall (nr. Aylsham) was used to represent Sandringham House.

The Avengers (1961-1969)

Channel: ITV.

Starring: Patrick Macnee, Honor Blackman, Diana Rigg and Linda Thorson.

Cult 1960's series - featuring a British suave eccentric agent (John Steed) and his athletic female partners: Cathy Gale, Emma Peel and Tara King.

Location used: One episode used the National Construction College at Bircham Newton (nr. Hunstanton), Wighton and Gun Hill (nr. Wells-next-the-Sea).

Campion (1989-1990)

Channel: BBC.

Starring: Peter Davidson and Brian Glover.

Detective series set in the 1930's, and based on the books by Margery Allingham. Aristocrat Albert Campion is an amateur sleuth who investigates mysteries, aided by his manservant (and reformed burglar) Lugg. Together they travel the East Anglia countryside in their vintage Lagonda car.

Location used: Scenes filmed at Bintree Mill, nr. Fakenham (*not open to the public*).





The Chief (1990-1995)

Channel: ITV.

Starring: Tim Pigott Smith and Martin Shaw.
Drama series featuring the problems facing the new Chief Constable of a regional police force. When John Stafford is promoted to 'Eastland' he quickly makes himself a series of enemies, especially amongst the long-serving officers.
Location used: Scenes were filmed throughout the county of Norfolk.



Dad's Army (1968-1977)

Channel: BBC.

Starring: Arthur Lowe, John Le Mesurier and Clive Dunn.
Classic comedy focusing on a World War II Home Guard platoon in an English coastal town - 'Walmington-on-Sea'. Characters included Captain Mainwaring - the head of the unit, second-in-command Arthur Wilson, and Corporal Jones. Eighty episodes were filmed over nine years, with the stars and crew staying at the Anchor and Bell Hotels in Thetford. The latter has a plaque and photographs in the reception area.



Location used: Nearly all the episodes featured scenes of Norfolk. Please note many of these locations are on restricted Ministry of Defence (MOD) land to the north of Thetford.

The Man and the Hour (1968) - The first episode. Thetford (The Anchor Hotel) and Buckenham Tofts/Blackrabbit Warren (MOD).

Museum Piece (1968) - Thetford (Newtown), Oxburgh Hall (Oxborough), Weeting and Buckenham Tofts (MOD).

Command Decision (1968) - Buckenham Tofts/Blackrabbit Warren (MOD), Oxburgh (Oxburgh Hall) and Thetford.

The Showing up of Lance Corporal Jones (1968) - Thetford (St. Mary the Less and a house in Newtown).

Shooting Pains (1968) - Thetford (St. Mary the Less and a house in Newtown).

The Armoured Might of Lance Corporal Jones (1969) - Thetford (Nether Row).

Battle School (1969) - Wendling (the former railway station).

The Lion has Phones (1969) - Bury St. Edmunds (Sugar Beet Factory), West Tofts Church (MOD) and Thetford (Newtown).

The Bullet is not for Firing (1969) - Thetford Forest area.

Room at the Bottom (1969) - Frog Hill (MOD). This location was used for the closing scene of each episode.

The Day the Balloon went up (1969) - Croxton Heath, Frog Hill (MOD), Wendling (former railway station and bridge) and West Tofts (The Red House).

Menace From the Deep (1969) - Great Yarmouth (Britannia Pier).

Man Hunt (1969) - Thetford (Nether Row), Blackrabbit Warren/Frog Hill and Buckenham Tofts (MOD).

No Spring for Frazer (1969) - Langford Church (MOD).

Sons of the Sea (1969) - Beccles and Acle New Road (Acle/Great Yarmouth).

The Big Parade (1970) - Stanford Lake (MOD land), Brandon (railway station) and Thetford (Nether Row).

Don't Forget the Diver (1970) - Bardwell (Six Bells pub) and Drinkstone (mill).

Boots, Boots, Boots (1970) - Buckenham Tofts (MOD) and Winterton beach.

Don't Fence Me In (1970) - Thorpe Camp, nr. East Wretham (MOD).

The Two and a Half Feathers (1970) - Leziate (British Industrial Sands).

The Test (1970) - Buckenham Tofts (MOD).

Fallen Idol (1970) - Frog Hill (MOD land) and Honington.

Battle of the Giants (1971) - Buckenham Tofts/Stanford Lake/West Tofts crossroads (MOD land) and Elveden Hall water tower (in Suffolk).

Keep Young and Beautiful (1972) - Thetford (High Lodge) and Sapiston.

A Soldier's Farewell (1972) - Kilverstone (Lodge Farm).

The Desperate Drive of Corporal Jones (1972) - Thetford (High Lodge) and Furze Heath (MOD).

The King was in his Counting House (1972) - Honington (primary school and church) and Sapiston.

All is Safely Gathered In (1972) - Bressingham (Walnut Tree Farm).

Brain Versus Brawn (1972) - Thetford (High Lodge), Bressingham (Walnut Tree Farm) and Santon Downham.

Round and Round went the Great Big Wheel (1972) - Wacton (house and Wash Lane railway bridge).

Time on my Hands (1972) - Thetford (The Guildhall and Nether Row).

The Deadly Attachment (1973) - Thetford (Mill Lane).

The Royal Train (1973) - Weybourne (North Norfolk Railway) and Sheringham.

We Know Our Onions (1973) - Honington (Malting Row and primary school).

The Dad's Army Experience

The Bressingham Steam Museum and Gardens (nr. Diss) is home to the 'Dad's Army Experience' featuring memento's, photographs and vehicles from the show. Includes Corporal Jones' butcher's van, 'Bertha' the tractor engine and a Leyland fire engine. There is also a reconstruction of Walmington-on-Sea High Street, complete with Swallows Bank (where Mainwaring worked), Frazer's funeral parlour, Jones's Butcher's shop and the church hall.



Bressingham Steam Museum and Gardens



Dangerfield (1995-2000)

Channel: BBC.

Starring: Nigel Le Vaillant, Amanda Redman and Sean Maguire.
Medical/police drama. Doctor Paul Dangerfield is a country GP, and also helps out the local constabulary as a police surgeon.

Location used: Two episodes featured the North Norfolk Coast - where Paul and his two teenager children have an eventful holiday. Scenes filmed at Deepdale Farm (Burnham Deepdale, nr. Hunstanton).

David Copperfield (1999)

Channel: BBC.

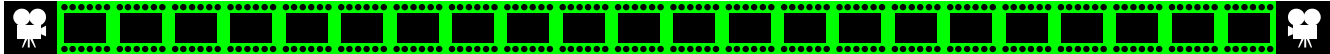
Starring: Bob Hoskins, Maggie Smith and Nicholas Lyndhurst.
Adaptation of the Dickens novel. The story follows David's life, from his early years with his mother and kind Clara Peggotty - to the evil Mr Murdstone. He later finds happiness again with Mr Micawber, and his Aunt Betsey Trotwood.

Location used: Scenes (interiors of debtor's prison) were filmed in the town of King's Lynn (King Street).

Death in Holy Orders (2003)

Channel: BBC.

Starring: Martin Shaw, Jesse Spencer and Robert Hardy.
An adaptation of the novel by East Anglian writer, P. D. James. The stories feature Scotland Yard detective Adam Dalgliesh, who lives partly in Norfolk in a converted windmill.
Location used: Scenes filmed on beaches in the Norfolk area.



Eastenders (1985-)

Channel: BBC.

Starring: Wendy Richard, Barbara Windsor and Steve McFadden. Soap opera, following the stories of working-class East End folk. It is set in the fictitious Albert Square, part of the London Borough of Walford E20.

Location used: The series featured a set of episodes aboard a cruiser in The Norfolk Broads. One location was the Ferry Boat Inn at Horning.



The Broads

Gallowglass (1993)

Channel: BBC.

Starring: Paul Rhys, Michael Sheen and Claire Hackett.

Chilling tale from Ruth Rendall. The word "gallowglass" means servant, or one indebted to another. The story tells of a young man who feels so indebted to another man - after he saved him from committing suicide. So strong is his gratitude that he follows his 'saviour' even to kidnapping a wealthy woman.

Location used: Scenes were filmed in Norfolk.

Great Expectations (1999)

Channel: BBC.

Starring: Ioan Gruffudd, Justine Waddell and Charlotte Rampling.

Adaptation of the Charles Dickens novel. Young Pip is expected to become a blacksmith, but secretly dreams of becoming a gentleman. When he meets the mysterious Miss Havisham and her niece, Pip is sure his dream will come true.

Location used: The area around Thornham (nr. Hunstanton) was used to recreate the Essex marshes, where Pip first meets Abel Magwitch. Whilst a derelict coal barn on the harbour was used as the Gargery house and forge where Pip grows up.

Hi-de-Hi (1980-1988)

Channel: BBC.

Starring: Paul Shane, Ruth Madoc and Su Pollard.

Comedy series set around the fictional Maplins Holiday Camp during the late 50's/early 60's. Characters included camp host Ted Bovis, Gladys Pugh the announcer noted for her 'morning campers', and daft chalet maid Peggy.

Location used: Scenes filmed on the North Norfolk Railway at Sheringham.

Kavannagh QC (1994-2001)

Channel: ITV.

Starring: John Thaw, Lisa Harrow and Geraldine James.

Series of courtroom dramas featuring battling barrister James Kavanagh, a talented working-class man who defends the underdog. But his personal life is far from perfect, his wife is having an affair with another lawyer, and his children are up to all sorts of tricks.

Location used: Scenes were shot in the city of Norwich.

Keeping Up Appearances (1990-1995)

Channel: BBC.

Starring: Patricia Routledge, Clive Swift and Josephine Tewson. Comedy featuring Hyacinth Bucket (pronounced 'bouquet') who will do anything to mix with the right crowd, and keep her upper-class image intact.

Location used: In 1995, scenes were filmed in the seaside town of Great Yarmouth, including the Pleasure Beach.

Kingdom (2007)

Channel: ITV.

Starring: Stephen Fry, Hermione Norris and Tony Slattery.

The story of solicitor Peter Kingdom who searches for answers about the death of his brother. He lives in the fictional Norfolk town of Market Shipborough.

Location used: Scenes filmed around the towns of Dereham, Swaffham and Wells-next-the-Sea.

I'm Still Alan Partridge (2002)

Channel: BBC.

Starring: Steve Coogan.

Comedy featuring the Norwich DJ and failed television star, Alan Partridge. In the new series he is living in a caravan with his girlfriend Sonja, and presenting 'Skirmish', a new military-based quiz show for cable TV.

Location used: Scenes were filmed in Norwich.

Life Begins (2004-)

Channel: ITV.

Starring: Caroline Quentin and Alexander Armstrong.

The experiences and life of Maggie Mee who finds herself on her own after her husband walked out on her.

Location used: A scene with a game of pitch and putt was filmed at Cromer.

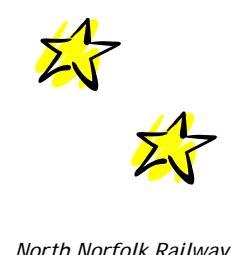
The Lost Prince (2003)

Director: Stephen Poliakoff.

Starring: Miranda Richardson, Michael Gambon and Bill Nighy.

The true story of the British Royal Prince locked away because he had epilepsy. He was the youngest child of George V and Queen Mary.

Location used: The marble hall and statue gallery at Holkham Hall (nr. Wells-next-the-Sea) doubled as Buckingham Palace. Scenes of a naval classroom were filmed at the North Norfolk District Council offices in Cromer. Weybourne Station (part of the North Norfolk Railway at Sheringham) featured as King's Lynn station.



North Norfolk Railway

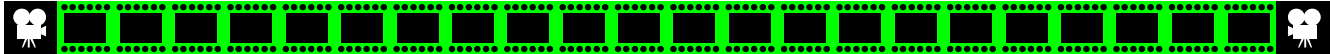
Love on a Branch Line (1994)

Channel: BBC.

Starring: Michael Maloney, Leslie Phillips and Maria Aitken.

The tale of Jasper Pye, a civil servant sent to the country to dismantle a forgotten research unit based at an old mansion. The eccentric owner, Lord Flamborough lives in a train - on his own 'branch line'. Whilst there Jasper finds himself falling in love with one of the Lord's three daughters.

Location used: Filmed at Oxburgh Hall (Oxborough), and on the North Norfolk Railway at Sheringham.



Lovejoy (1986-1994)

Channel: BBC.

Starring: Ian McShane, Dudley Sutton and Phyllis Logan. Based on the novels by Essex writer Jonathan Gash, this comedy drama was set around the adventures of loveable antiques rogue 'Lovejoy'. Almost every episode featured locations in the East of England (notably in Essex and Suffolk). Lovejoy lived in a pretty country cottage, and travelled around in a battered Morris Minor called 'Miriam'. His close friends were tweed-dressed Tinker Dill and young apprentice Eric Catchpole. He also had relationships with local aristocrat Lady Jane Felsham, and later auctioneer Charlotte Cavendish. *Location used:* Scenes were filmed in Norwich (Elm Hill and Cathedral) and at Blakeney on the North Norfolk Coast.

Martin Chuzzlewit (1994)

Channel: BBC.

Starring: Keith Allen, Pete Postlethwaite and Paul Scofield. Adaptation of the Charles Dickens novel. The story follows the life of young Martin Chuzzlewit, who falls in love with his grandfather's helper Mary, and becomes a student of the critical Mr Pecksniff. Later he heads to America to seek his fortune, before returning home to meet the nasty Jonas Chuzzlewit. *Location used:* Filmed in King's Lynn, designed to represent London.



Heydon Hall

The Mill on the Floss (1997)

Channel: BBC.

Starring: Emily Watson, Bernard Hill and Ifan Meredith. Adaptation of the George Eliot novel. It tells of the Tulliver family who have their home/business (a mill) taken away from them by Lawyer Wakem, after owning it for over 300 years. But then Edward Tulliver's daughter Maggie falls in love with Wakem's son Philip - and the old rivalries start again. *Location used:* Scenes were filmed at Bintree Mill (nr. Fakenham) (*not open to the public*), and Heydon Hall (*not open to the public*) and village, nr. Aylsham (which became St. Ogg's).

The Moonstone (1996)

Channel: BBC.

Starring: Greg Wise, Keeley Hawes and Peter Vaughan. Adaptation of the Wilkie Collins novel. When the Moonstone diamond is stolen, all the suspects appear to have alibis. Even the owner of the diamond won't say whom she saw took it - so the famous Sergeant Cuff is called in. *Location used:* Scenes were filmed at Heydon Hall, nr. Aylsham (*not open to the public*) and its village (which became Cobb's Hole).



Murder Rooms (The Dark Beginnings of Sherlock Holmes) (2000)

Channel: BBC.

Starring: Ian Richardson and Charles Edwards. Series of 19th C. period dramas, featuring the stories of the 'real' Sherlock Holmes - the pioneering forensic detective Joseph Bell, and his medical student, Arthur Conan Doyle. *Location used:* Scenes were shot for 'The Spiritualist's Chair' story at Cromer - meant to represent Southsea in the 1880's. Filming took place on the pier, the beach and at North Lodge Park council offices. Scenes were also shot at the North Norfolk Railway in Sheringham and Holt Country Park.

P. D. James Mysteries (1983-5; 1988; 1991-8)

Channel: ITV.

Starring: Roy Marsden. Adaptations of the novels by East Anglian writer, P. D. James. The stories feature Scotland Yard detective Adam Dalgliesh, who lives partly in Norfolk in a converted windmill. *Location used:* Scenes shot at various locations in the county.

The Prisoner (1967-1968)

Channel: ITV

Starring: Patrick McGoohan. Cult mystery drama. A resigned secret agent is abducted to a bizarre prison where the warders are determined to break him. *Location used:* The opening titles featuring McGoohan driving his car at the Lotus factory test track at Hethel (nr. Norwich).

The Rainbow (1998)

Channel: BBC.

Starring: Imogen Stubbs, Paul McGann and Tom Bell. Based on the novel by D. H. Lawrence. It tells of the sexual awakenings of the beautiful daughter of a wealthy squire. *Location used:* Garden-based scenes were filmed in the walled garden at Felbrigg Hall, nr. Cromer.



Felbrigg Hall



Sansaar (2001)

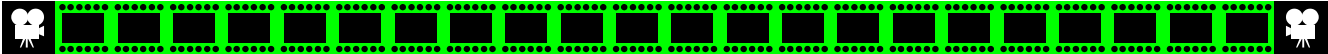
Channel: India (Zee TV).

Starring: Sanjeev Seth. Indian soap opera which follows the lives of an Indian family who are scattered across five continents (England, America, Australia, New Zealand and South Africa). Sansaar means 'the world'. *Location used:* Scenes were filmed in Cromer (on the pier and Runton Road), and in the city of Norwich.

September Song (1993-1995)

Channel: ITV.

Starring: Russ Abbot and Michael Williams. Gentle comedy drama following the adventures of two middle-aged friends, Billy and Ted. The last series (1995) was set in the town of Cromer. Here Billy finds work in the pier show as a comic, whilst Ted meets an old flame. *Location used:* Filmed throughout the town of Cromer.



The Uninvited (1997)

Channel: ITV.

Starring: Leslie Grantham, Douglas Hodge and Lia Williams. Photographer Steve Blake uncovers a series of strange events, when he learns about the survivors of 'Sweet Hope' - a coastal village which had tragically crashed in the sea. When he ventures underwater he is shocked to find the inhabitants remains - so who are the survivors, could they be aliens?

Location used: The series was filmed throughout Norfolk.

Up Rising (1999)

Channel: ITV.

Starring: Michelle Collins, Anton Rogers and Kevin McNally. Comedy set in the village of 'Up Rising', home to a series of very different characters. Lots of ridiculous situations, mix-ups and double-entendres ensure.

Location used: Most filming took place in the village of Heydon ('Up Rising'), nr. Aylsham.

Vanity Fair (1998)

Channel: BBC.

Starring: Natasha Little, Nathaniel Parker and Miriam Margolyes.

Adaptation of William Thackeray's 19th C. novel. It tells of Becky Sharp, a beautiful and manipulative girl who will do anything to climb up the social ladder at what ever costs to her friends around her.

Location used: Scenes were filmed at Rainthorpe Hall (nr. Wymondham), Barningham Hall (nr. Holt) and Thelveton Hall (nr. Diss). These three though appear on screen as one property, the grand Elizabethan Queens Crawley. *Please note that none of these properties are open to the public.*

SUFFOLK



Film

Barry Lyndon (1975) Drama, Romance

Director: Stanley Kubrick.

Starring: Ryan O'Neal, Marisa Berenson and Patrick Magee.

A gentlemanly rogue travels the battlefields and parlours of 18th C. Europe determined to make for himself the life of a nobleman through seduction, gambling and dueling.

Location used: Scenes were filmed in Lavenham, where The Guildhall of Corpus Christi was used as an 18th C. inn.

The Bridge (1992) Drama

Director: Sydney Macartney.

Starring: Saskia Reeves, David O'Hara and Joss Ackland.

True story of painter Phillip Wilson Steer, and his relationship with the married Isobel Heatherington. She had moved to the countryside, whilst her husband continued to work in London. Persuaded to be a model by the painter, it is not long before they are having an affair.

Location used: Many of the scenes were shot in the places where the real-life events are believed to have happened, such as Blythburgh, Walberswick and Yoxford.

David Copperfield (1970) Drama

Director: Delbert Mann.

Starring: Michael Redgrave, Laurence Olivier and Richard Attenborough.

Adaptation of the Charles Dickens novel. This one revolves around David as he wanders up and down the beach reflecting on his life in flashbacks.

Location used: The isolated beaches between Lowestoft and Southwold provided the location for Peggotty's boat. Whilst Southwold underwent a transformation with sand filling the roadways - taking it back to the days of the stagecoach.



Southwold



Defence of the Realm (1985) Drama, Thriller

Director: David Drury.

Starring: Gabriel Byrne, Greta Scacchi and Denholm Elliot.

Fast-paced thriller examining the nation's secret services and the responsibility of journalistic investigations in an era of nuclear tensions and bureaucratic deceit. The film examines a series of events occurring after a near crash of a nuclear bomber at an American air force base in England.

Location used: Scenes (a near crash of a nuclear bomber) were filmed at RAF Lakenheath (*not open to the public*).

Drowning by Numbers (1988) Drama, Comedy

Director: Peter Greenaway.

Starring: Bernard Hill, Joan Plowright and Juliet Stevenson.

Surreal black comedy, where three generations of women who share the same name - all discover the same way of dealing with their marital problems. One husband is drowned in the bath, another in the ocean, and the third in a swimming pool. Soon a local coroner has some questions about the drownings.

Location used: Scenes filmed at Thorpeness (a beach house) and Southwold.

Eyes Wide Shut (1999) Thriller, Drama

Director: Stanley Kubrick.

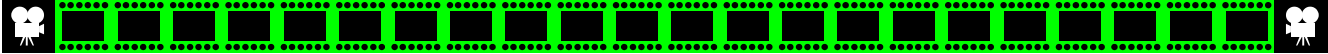
Starring: Tom Cruise, Nicole Kidman and Sydney Pollack.

Erotic/psychological drama - the final work of legendary director Stanley Kubrick. The story tells of a wealthy couple who are led into sexual temptation and desire. Closed-sets in London stood in for New York City (USA)

Location used: Scenes (masked orgy sequences) were filmed at Elveden Hall, nr. Thetford (*not open to the public*).



Elveden Hall



The Fourth Protocol (1987) Thriller

Director: John MacKenzie.

Starring: Michael Caine, Pierce Brosnan and Joanna Cassidy. This fact-based spy thriller is set in 1968. The protocol is a secret agreement between America, Britain and Russia to cease smuggling nuclear weapons into their respective countries. But a rogue spy is ordered to stage a nuclear accident in England, and blame America.

Location used: One of the most spectacular sequences sees an airborne shot of SAS attack helicopters flying along the River Orwell, and between the legs of the Orwell Bridge. They then land a marine squad on the wet dock at Ipswich.

The Golden Bowl (2000) Drama

Director: James Ivory.

Starring: Uma Thurman, Anjelica Huston and Kate Beckinsale. Based on the Henry Fielding novel, this tale of love/treachery sees an American art collector and his daughter travelling through Europe. On their journey they meet an American lady who starts to play matchmaker, introducing them to Prince Amerigo, and a girl called Charlotte.

Location used: Scenes were shot at Helmingham Hall (nr. Needham Market).

Iris (2001) Biography, Drama

Director: Richard Eyre.

Starring: Judi Dench, Kate Winslet and Jim Broadbent. Oscar-winning true story of the romance between novelist and philosopher Iris Murdoch and John Bayley. From meeting as teachers at Oxford, all the way through 40 years to Murdoch's fight with Alzheimer's Disease.

Location used: Scenes were filmed at Southwold (beach, Gun Hill, beach hut), neighbouring Walberswick and St. Lawrence's Church in South Cove (funeral).



Southwold Beach



Lara Croft: Tomb Raider (2001) Fantasy, Action

Director: Simon West.

Starring: Angelina Jolie, Jon Voight and Ian Glen. The popular video game is turned into a big-budget adventure. Lara Croft is a British aristocrat, who leads a double life as a acquirer of lost antiquities. The film follows her quest for an ancient relic which has the power over time.

Location used: Scenes (interior shots of Croft Towers) were filmed at Elveden Hall, nr. Thetford (*not open to the public*).

The Lost Son (1999) Drama, Thriller

Director: Chris Menges.

Starring: Daniel Auteuil, Natassja Kinski and Katrin Cartlidge. The story of a French detective who deals with cases of adultery. While trying to locate the brother-in-law of an old friend, he finds himself uncovering a terrible series of events. The climax is set on a windswept beach.

Location used: Scenes shot at Landguard Point in Felixstowe.

The Chronicles of Narnia: The Lion, Witch and the Wardrobe (2005) Adventure, Fantasy

Director: Andrew Adamson.

Starring: Tilda Swinton, Georgie Henley and James McAvoy. Four children travel through a wardrobe to the land of Narnia, and learn of their destiny to free it from an evil witch.

Location used: Kentwell Hall at Long Melford was digitally surveyed in great detail in order to be rebuilt in New Zealand as the Professors House.



Kentwell Hall



Princess Caraboo (1994) Comedy, Drama

Director: Michael Austin.

Starring: Phoebe Cates, Jim Broadbent and Kevin Kline. Loosely based on an actual incident, this tells of a young woman who suddenly appears in the English countryside in 1817, wearing exotic clothes and talking gibberish. She claims to be a princess of Japanese origin named 'Caraboo'.

Location used: Scenes were filmed at Elveden Hall, nr. Thetford (*not open to the public*).

Requiem Apache (1994) Drama

Director: David Hugh Jones.

Starring: Alfred Molina, Julie Walters and Kenneth Cranham. The story follows Hamish, a former getaway car driver who has retired to the country to raise his baby son. Everything is going fine until he receives a visit from his old gang.

Location used: Scenes were filmed around the village of Stoke-by-Nayland, and in the town of Ipswich (a nightclub and town centre car park).

Tomorrow Never Dies (1997) Action, Adventure

Director: Roger Spottiswoode.

Starring: Pierce Brosnan, Jonathan Pryce and Michelle Yeoh. The 18th James Bond adventure which sees the famous British secret-agent 007 battling against the media mogul Elliot Carver who is manipulating world events through his satellite system.

Location used: Scenes were filmed at RAF Mildenhall (*not open to the public*), which doubled as the US airbase at Okinawa in Japan. Whilst nearby RAF Lakenheath (*not open to the public*) became an Afghan arms dump.

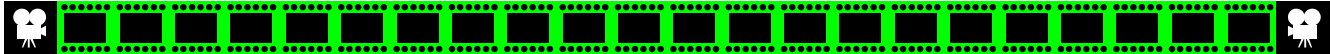
Vanity Fair (2004) Drama, Romance

Director: Mira Nair.

Starring: Gabriel Byrne, Reese Witherspoon and Rhys Ifans. The most recent film version of William Makepeace Thackeray's satirical novel about middle-class London life at the beginning of the 19th C.

Location used: Scenes were filmed at Elveden Hall, nr. Thetford (*not open to the public*).





The Wind in the Willows (1996) Adventure, Fantasy
Director: Terry Jones
Starring: Steve Coogan, Eric Idle and Terry Jones.
 Live-action adaptation. The story sees Mole evicted from his home by the evil Weasels, after they purchase the land from Mr Toad, whose inheritance is dwindling away.
Location used: Kentwell Hall at Long Melford became the exterior of Toad Hall.

The Witchfinder General (1968) History, Horror
Director: Michael Reeves.
Starring: Vincent Price, Ian Ogilvy and Rupert Davies.
 Set in 17th C. England, this is based on the true story of Matthew Hopkins, the notorious Witchfinder General.
Location used: Filmed in the fields and country lanes around Debenham and Eye. The village of Lavenham was also used.

Yangste Incident (1957) Drama, War
Director: Michael Anderson.
Starring: Richard Todd, William Hartnell and Donald Houston.
 While sailing lawfully up the Yangste River in 1949, a British warship finds its return to the sea blocked by the Chinese. Soon its crew find themselves used as an international pawn.
Location used: Scenes were filmed on the River Orwell (between Felixstowe and Harwich), which doubled as the Yangste River in China.

Yesterday's Hero (1979) Drama
Director: Neil Leifer.
Starring: Ian McShane, Suzanne Somers and Adam Faith.
 Based on the book by Jackie Collins, this film follows a football player on the road to fame and fortune for a second time.
Location used: Scenes were filmed at the Ipswich Town Football Club.



Television

A Fatal Inversion (1992)
Channel: BBC.
Starring: Douglas Hodge, Jeremy Northam and Saira Todd.
 Chilling tale from Ruth Rendall. After Adam inherits a country house he and his friend decide to spend the summer there, with an assortment of other guests. A decade later, the bodies of a young woman and infant are found near the house - and as the police investigate, the past catches up with Adam.
Location used: Scenes were filmed in Suffolk.

Between the Lines (1992-1994)
Channel: BBC.
Starring: Neil Pearson, Tom Georgeson and Siobhan Redmond.
 Drama series following the work of Detective Supt. Tony Clark, a member of the Complaints Investigation Bureau. His role to hunt out bent coppers.
Location used: Scenes filmed in Felixstowe, Docks, Shotley and Pin Mill.

Campion (1989-1990)
Channel: BBC.
Starring: Peter Davidson and Brian Glover.
 Detective series set in the 1930's, and based on the books by Margery Allingham. Aristocrat Albert Campion is an amateur sleuth who investigates mysteries, aided by his manservant (and reformed burglar) Lugg. Together they travel the East Anglia countryside in their vintage Lagonda car.
Location used: Scenes filmed at various locations in the county, including Bury St. Edmunds, Long Melford, Newmarket and Sudbury.

Canterbury Tales (1968)
Channel: BBC.
Starring: Ian Richardson, Joss Ackland and Timothy Bateson.
 Adaptation of the poem by Geoffrey Chaucer. It follows a group of pilgrims who tell tales to each other, as they journey to Canterbury Cathedral.
Location used: Scenes filmed in Lavenham (which represented a London street of the time).

The Chief (1990-1995)
Channel: ITV.
Starring: Tim Pigott Smith and Martin Shaw.
 Drama series featuring the problems facing the new Chief Constable of a regional police force. When John Stafford is promoted to 'Eastland' he quickly makes himself a series of enemies, especially amongst the long-serving officers.
Location used: Scenes filmed throughout the county of Suffolk.

The Children of Green Knowe (1986)
Channel: BBC.
Starring: Daphne Oxenford, Alec Christie and George Malpas.
 Classic children's story by Lucy Boston. A young boy goes to live with his grandmother in the family's ancestral home. Soon he discovers that the house is also inhabited by a host of half-seen children from centuries past.
Location used: Scenes filmed at Wingfield College (nr. Diss).

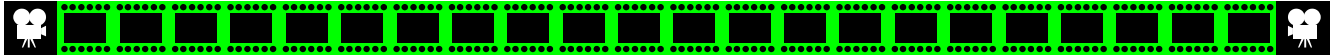


West Stow
Anglo-Saxon
Village

Dark Ages (1999)
Channel: ITV.
Starring: Phil Jupitus, Alistair McGowan and Pauline McLynn.
 This comedy series is set in an Anglo-Saxon village in the year 999AD, and is a satire on present-day fears. So we have the villagers worrying about the coming Millennium, unstable currency and invaders from Europe.
Location used: The reconstructed West Stow Anglo-Saxon Village (nr. Bury St. Edmunds) was used for outside shots.

David Copperfield (1999)
Channel: BBC.
Starring: Bob Hoskins, Maggie Smith and Nicholas Lyndhurst.
 Adaptation of the Dickens novel. The story follows David's life, from his early years with his mother and kind Clara Peggotty - to the evil Mr Murdstone. He later finds happiness again with Mr Micawber, and his Aunt Betsey Trotwood.
Location used: Beach scenes were filmed at Benacre (just to the north of Southwold).





Deceit (2000)

Channel: BBC.

Starring: Francesca Annis, Peter O'Brien and Christopher Fulford.

Psychological thriller based on the book by Clare Francis. When a respected Suffolk businessman goes missing, the lives of his wife Ellen and their two children are shattered. But just as Ellen gets her life back together, she discovers that Harry was not the man he appeared to be.

Location used: Scenes were filmed around the Rivers Deben and Orwell, including Pin Mill, Felixstowe Ferry, Bawdsey and Woodbridge.

Doctor Who (1963-)

Channel: BBC.

Starring: Tom Baker and Louise Jameson.

The Time Lord has to escape deadly robots and amphibian creatures in this episode from 1978.

Location used: The marshes around Iken and Snape (nr. Aldeburgh).



Gallowglass (1993)

Channel: BBC.

Starring: Paul Rhys, Michael Sheen and Claire Hackett.

Chilling tale from Ruth Rendall. The word "gallowglass" means servant, or one indebted to another. The story tells of a young man who feels so indebted to another man - after he saved him from committing suicide. So strong is his gratitude that he follows his 'saviour' even to kidnapping a wealthy woman.

Location used: Scenes were filmed in Suffolk.

Great Expectations (1999)

Channel: BBC.

Starring: Ioan Gruffudd, Justine Waddell and Charlotte Rampling.

Adaptation of the Charles Dickens novel. Young Pip is expected to become a blacksmith, but secretly dreams of becoming a gentleman. When he meets the mysterious Miss Havisham and her niece, Pip is sure his dream will come true.

Location used: Scenes were filmed at Ramsholt church, nr. Woodbridge.



Gullivers Travels (1996)

Channel: UStv.

Starring: Ted Danson, Mary Steenburgen and James Fox.

Lavish US mini-series, based on the book by Jonathan Swift. It tells of a man who returns home after eight years of absence, and relates fantastical tales about strange lands he has visited.

Location used: Scenes were filmed at Elveden Hall, nr. Thetford (*not open to the public*).

The Inspector Lynley Mysteries (2000-)

Channel: BBC.

Starring: Nathaniel Parker and Sharon Small.

Based on the novels by Elizabeth George, this drama series features Scotland Yard Detective Inspector Thomas Lynley (who is also the 8th Earl of Asherton).

Location used: Scenes filmed at Hawkedon House, nr. Bury St. Edmunds (*not open to the public*) and St. Mary's Church in Bury St. Edmunds.

A Line in the Sand (2002)

Channel: ITV.

Starring: Ross Kemp and Mark Bazeley.

Two-part thriller, which sees Kemp playing a salesman for an agricultural machinery company whose patch includes Iran. He finds himself a victim of circumstance when the machinery he sells is used by the Iranians for their weaponry programme.

Location used: Scenes filmed at Southwold and Walberswick.

Jonathan Creek (1997-)

Channel: BBC.

Starring: Alan Davies, Julia Sawalha and Caroline Quentin.

Quirky drama series following the adventures of Jonathan Creek, who worked as an assistant for a top illusionist - but in-fact is really the brains behind the act. He soon finds that his mind is also good at solving baffling crimes. He lives in an East Anglian windmill.

Location used: One episode featured The Bell pub and green in the village of Middleton, plus nearby Wangford and Wrentham (all near Saxmundham).

Little Britain (2003-)

Channel: BBC.

Starring: Matt Lucas and David Walliams.

Award-winning sketch show featuring an array of mad and quirky characters.

Location used: Scenes filmed at Southwold (cycling along promenade and English Rose Tea Rooms).

The Lost Prince (2003)

Director: Stephen Poliakoff.

Starring: Miranda Richardson, Michael Gambon and Bill Nighy.

The true story of the British Royal Prince locked away because he had epilepsy. He was the youngest child of George V.

Location used: Scenes filmed at Sizewell Hall, nr. Leiston (*not open to the public*), and Somerleyton Hall, nr. Lowestoft (which doubled for interiors of Sandringham House in Norfolk).

Lovejoy (1986-1994)

Channel: BBC.

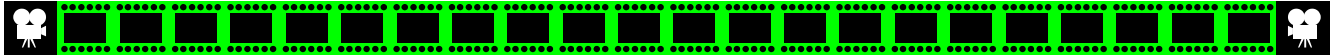
Starring: Ian McShane, Dudley Sutton and Phyllis Logan.

Based on the novels by Essex writer Jonathan Gash, this comedy drama was set around the adventures of loveable antiques rogue 'Lovejoy'. Almost every episode featured locations in the East of England (notably in Essex and Suffolk). Lovejoy lived in a pretty country cottage, and travelled around in a battered Morris Minor called 'Miriam'. His close friends were tweed-dressed Tinker Dill and young apprentice Eric Catchpole. He also had relationships with local aristocrat Lady Jane Felsham, and later auctioneer Charlotte Cavendish.



Kersey

Location used: Filmed throughout Suffolk including Boxford, Bungay, Bury St. Edmunds (Angel Hill, Borough Offices used as a police station and One Bull pub), Cavendish (The Green), Clare (Market Hill), Dunwich, Elmwell, Flatford Mill, Hadleigh (churchyard, cricket pitch, Corn Exchange and Market Place), Helmingham Hall, Hintlesham Hall (used as health clinic), Ickworth House and Park, Kersey (used for very first shot in the series, when Eric and Lovejoy drive through the ford on a



motorbike with side car), Lavenham (Angel Hotel, Great House Restaurant, Shilling Street, Swan Hotel and Timbers Restaurant), Ipswich (wet dock), Leiston, Lindsey (Red Rose pub), Long Melford (Bull Hotel, Kentwell Hall, High Street), Lowestoft, Newmarket, Orford, Pin Mill (Butt and Oyster pub became The Three Ducks, owned by Eric's uncle), Preston St. Mary (Priory Farm used as Charlotte Cavendish's auction rooms), Somerleyton Hall, Sudbury (North Street) and Wingfield Old College.

Miss Marple (1984-1992)

Channel: BBC.

Starring: Joan Hickson.

Adaptations of the Agatha Christie novels about an elderly female sleuth. Miss Jane Marple lived in the pretty village of St. Mary Mead, and using her softly spoken technique worked out even the most complex murder investigations.

Location used: One of the stories shown in 1995 features scenes filmed at Wingfield College (nr. Diss).

The Moonstone (1996)

Channel: BBC.

Starring: Greg Wise, Keeley Hawes and Peter Vaughan.

Adaptation of the Wilkie Collins novel. When the Moonstone diamond is stolen, all the suspects appear to have alibis. Even the owner of the diamond won't say whom she saw took it - so the famous Sergeant Cuff is called in.

Location used: Scenes were filmed at Elveden Hall, nr. Thetford (*not open to the public*).

Murder in Mind (2001-2003)

Channel: BBC.

Starring: Different actors/characters for each self-contained story. Series of psychological thrillers - the theme linking each episode is death in suspicious circumstances. Will they get away with the crime or not?

Location used: One episode 'Rage' is based around a road rage incident, and stars Maggie O'Neill and Neil Dudgeon. Scenes were filmed at Walberswick beach and church (a funeral), Ipswich, Westleton and Woodbridge.

Only Fools and Horses (1981-2003)

Channel: BBC.

Starring: David Jason, Nicholas Lyndhurst and Buster Merryfield.

Classic comedy featuring the Trotters - Del Boy, Rodney and Grandad (later Uncle Albert). Del is always looking for ways to become a millionaire, mainly through his money-making schemes. A special from 1996 - 'A Royal Flush' - sees Rodney meeting the daughter of the Duke of Malbury, and soon Del is organising the social wedding of the year.

Location used: Scenes were filmed at Helmingham Hall (nr. Needham Market).

P. D. James Mysteries (1983-5; 1988; 1991-8)

Channel: ITV.

Starring: Roy Marsden.

Adaptations of the novels by East Anglian writer, P. D. James. The stories feature Scotland Yard detective Adam Dalgliesh, who lives partly in Norfolk in a converted windmill. Here amongst the quiet country lanes, pretty villages and seaside towns, murders come thick and fast.

Location used: Filmed throughout Suffolk (Felixstowe Ferry, Bawdsey, Sizewell Power Station), including the town of Ipswich (Willis Faber building).

Planespotting (2005)

Channel: ITV.

Starring: Lesley Sharp, Mark Benton and Ross Boatman.

The true story of the 14 plane spotters who were arrested in Greece for spying.

Location used: Scenes filmed at RAF Lakenheath (*not open to the public*).

Spooks (2002-)

Channel: BBC.

Starring: Matthew Macfadyen, Keeley Hawes and Jenny Agutter.

Action-packed drama series set around the security service MI5.

Location used: Scenes for one episode were filmed at Dunwich Heath Coastal Centre and Beach (nr. Saxmundham).



visiteastofengland.com

PLEASE NOTE: No part of this information sheet may be reproduced, stored in a retrieval system or transmitted in any form by any means electronic, mechanical, photocopying, recording or otherwise, without prior permission of the publisher.