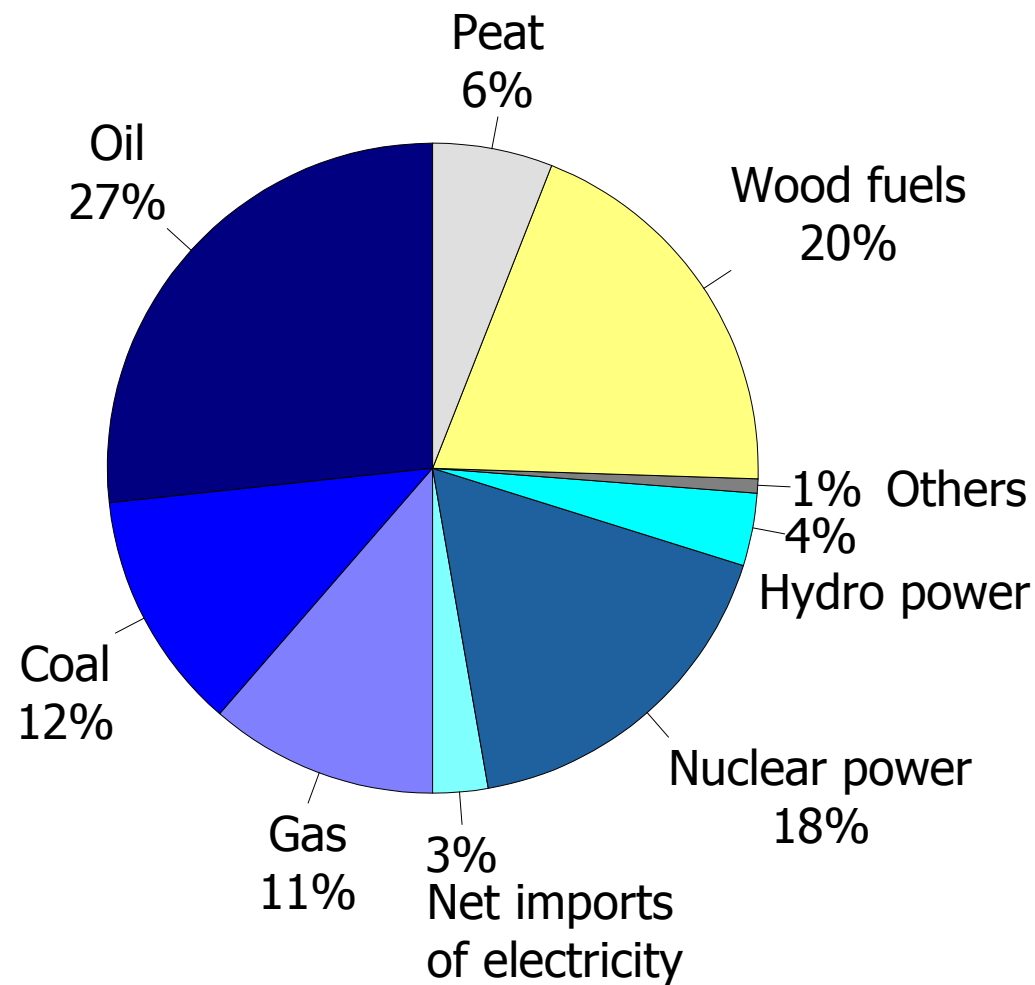
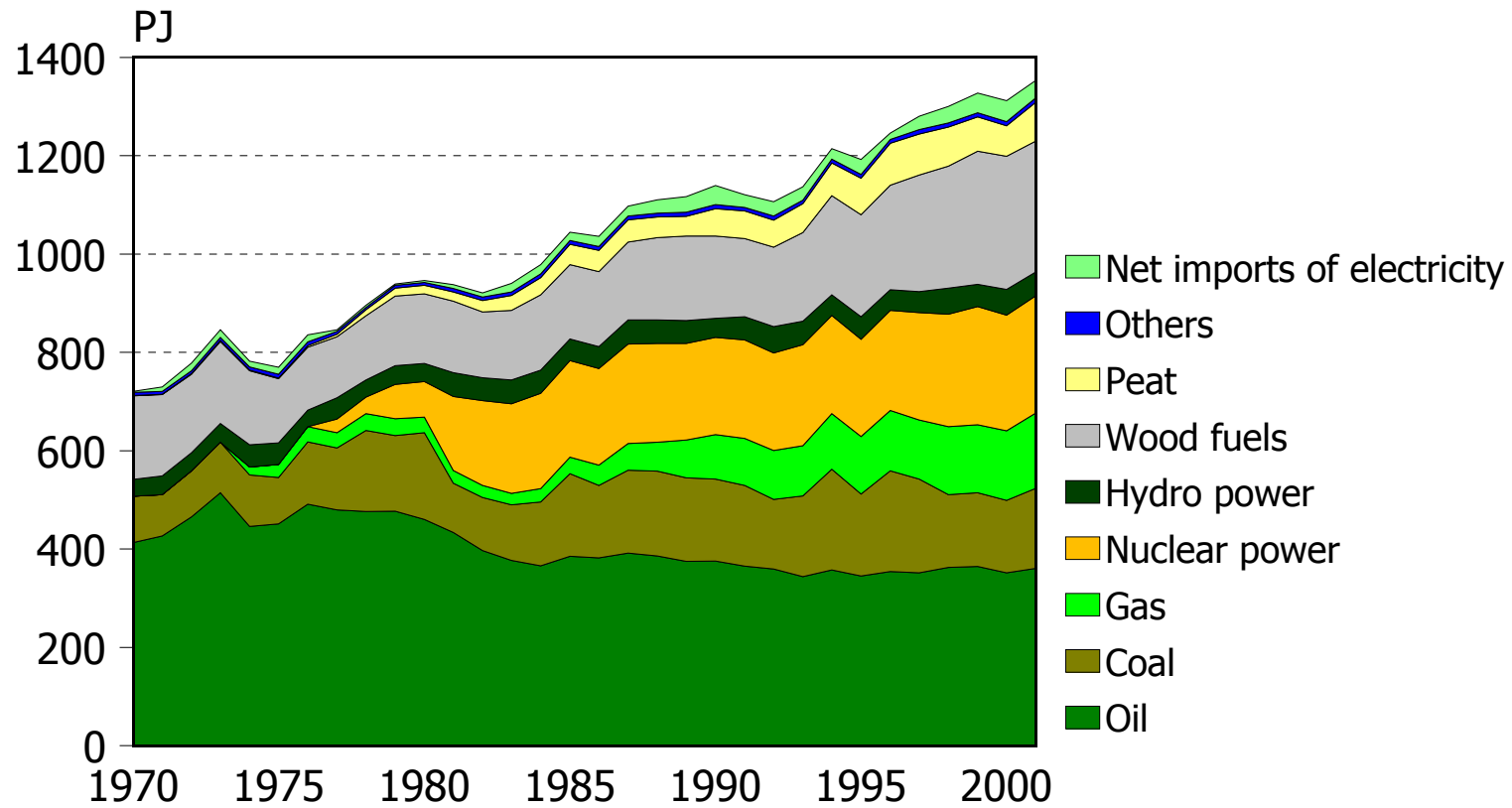




*Total energy consumption 2001**

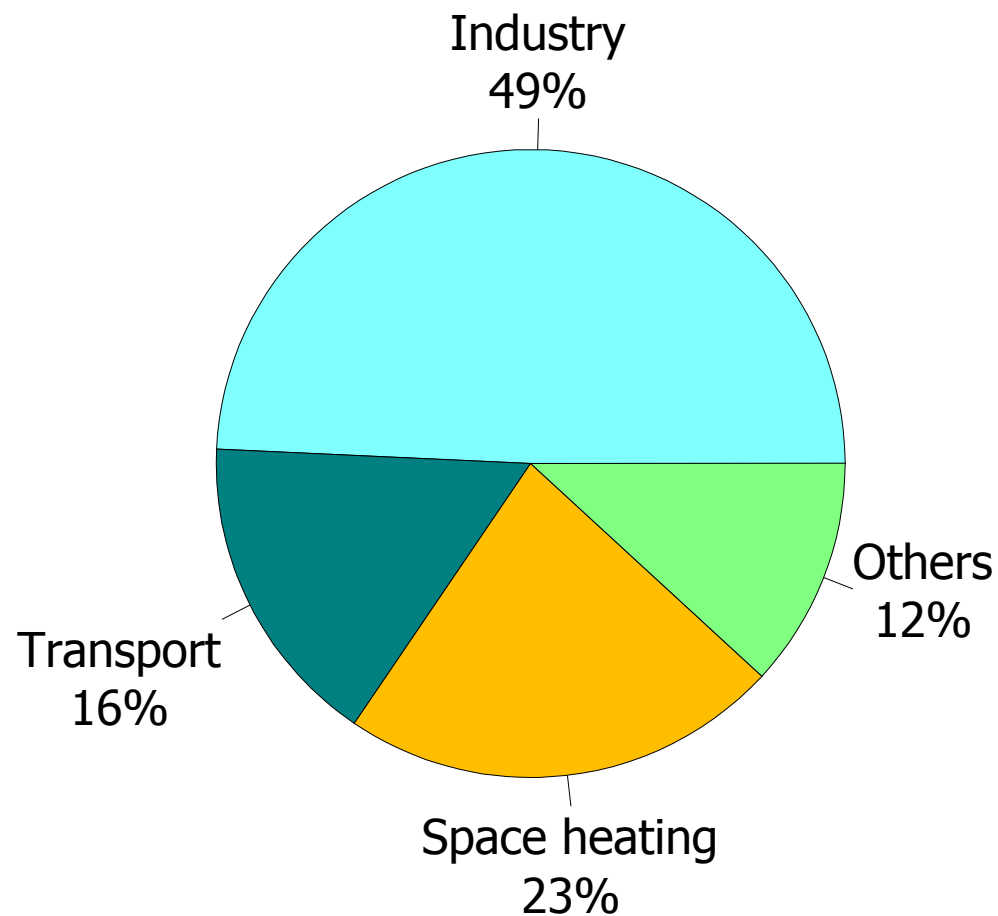


*Total energy consumption 1970-2001**



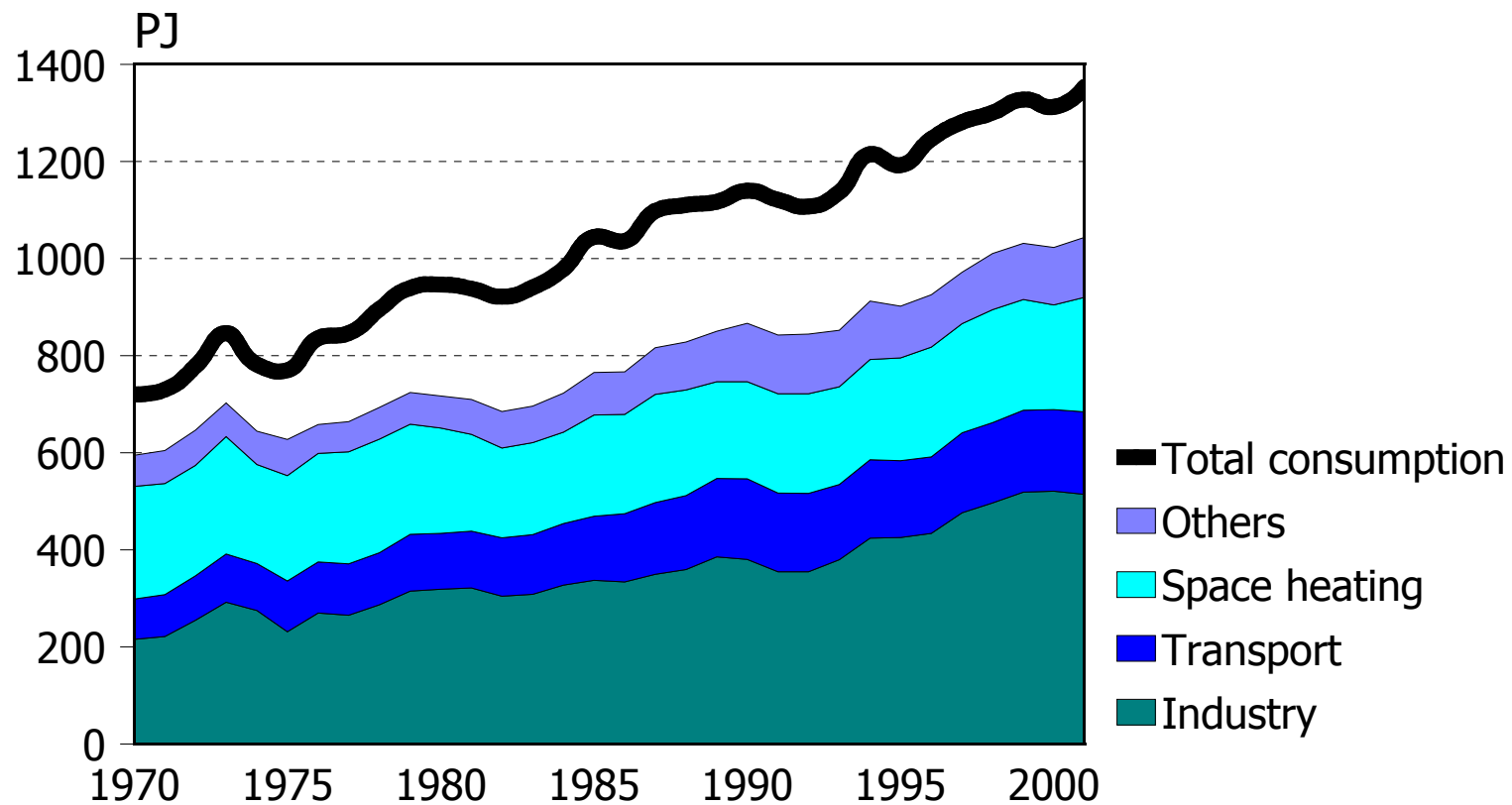


*Final energy consumption 2001**



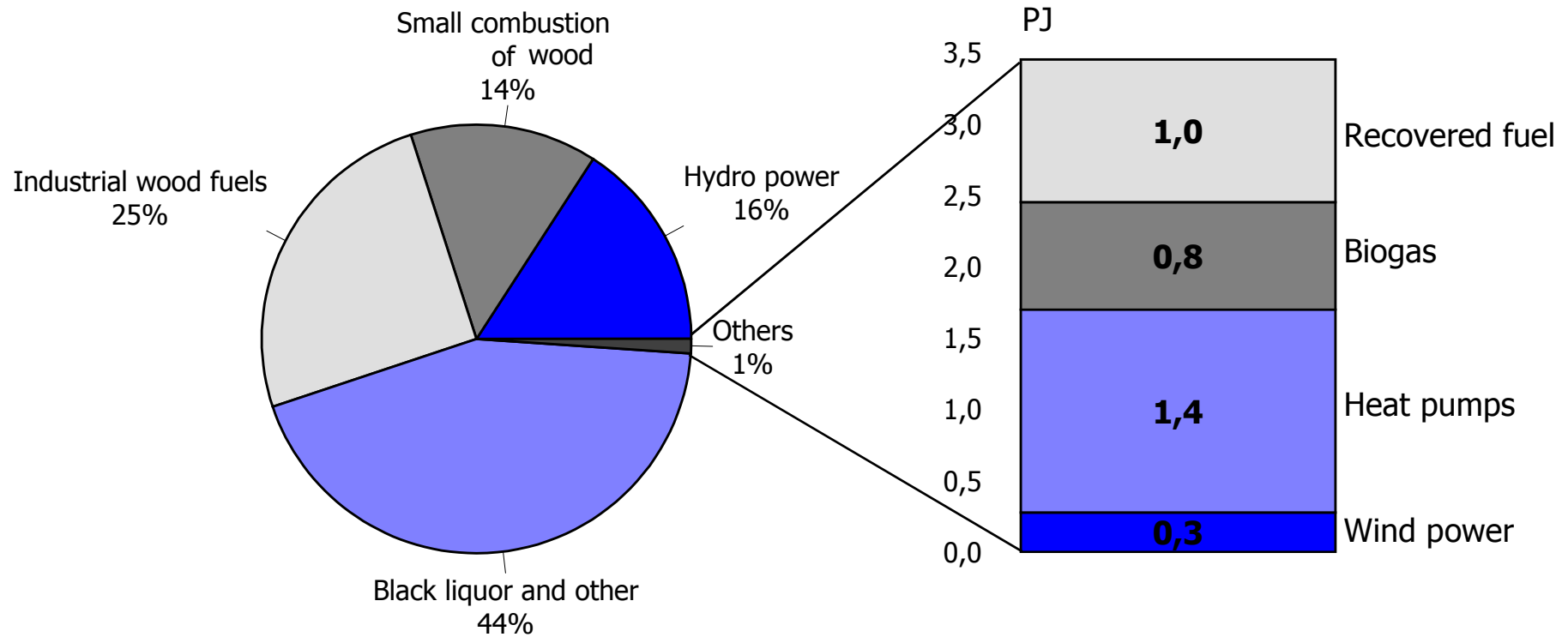


*Total energy consumption and final energy consumption
1970-2001**



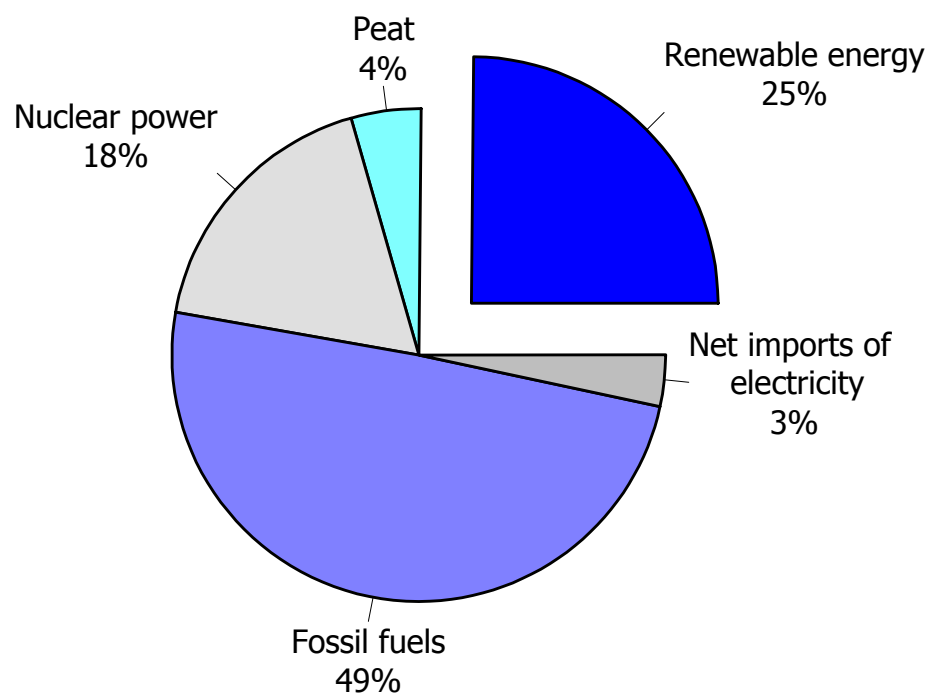


Consumption of renewable energy sources 2000



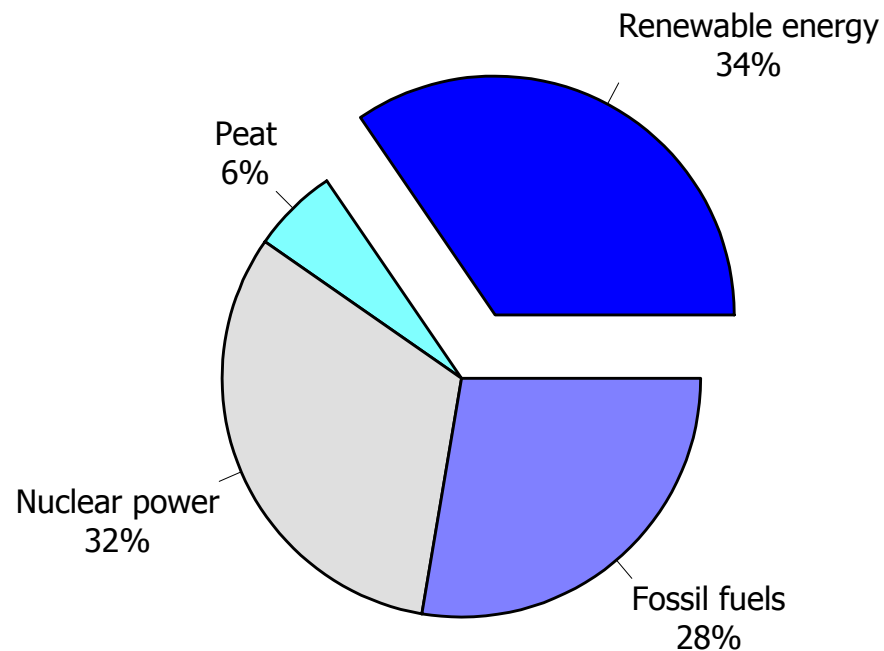
Share of renewable energy 2000

In total energy consumption



Total 1 308 PJ.

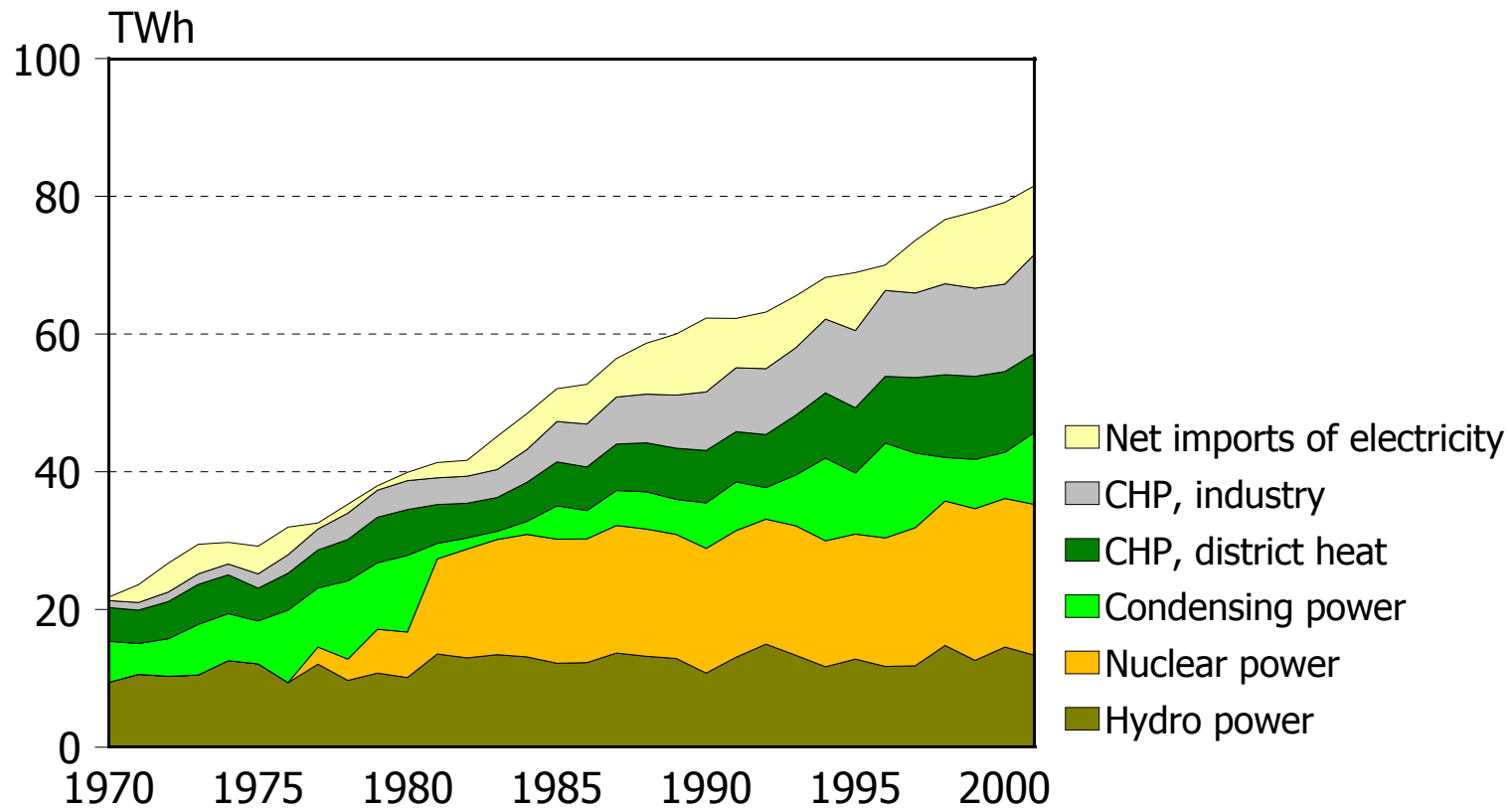
In electricity generation



Total 67 TWh.

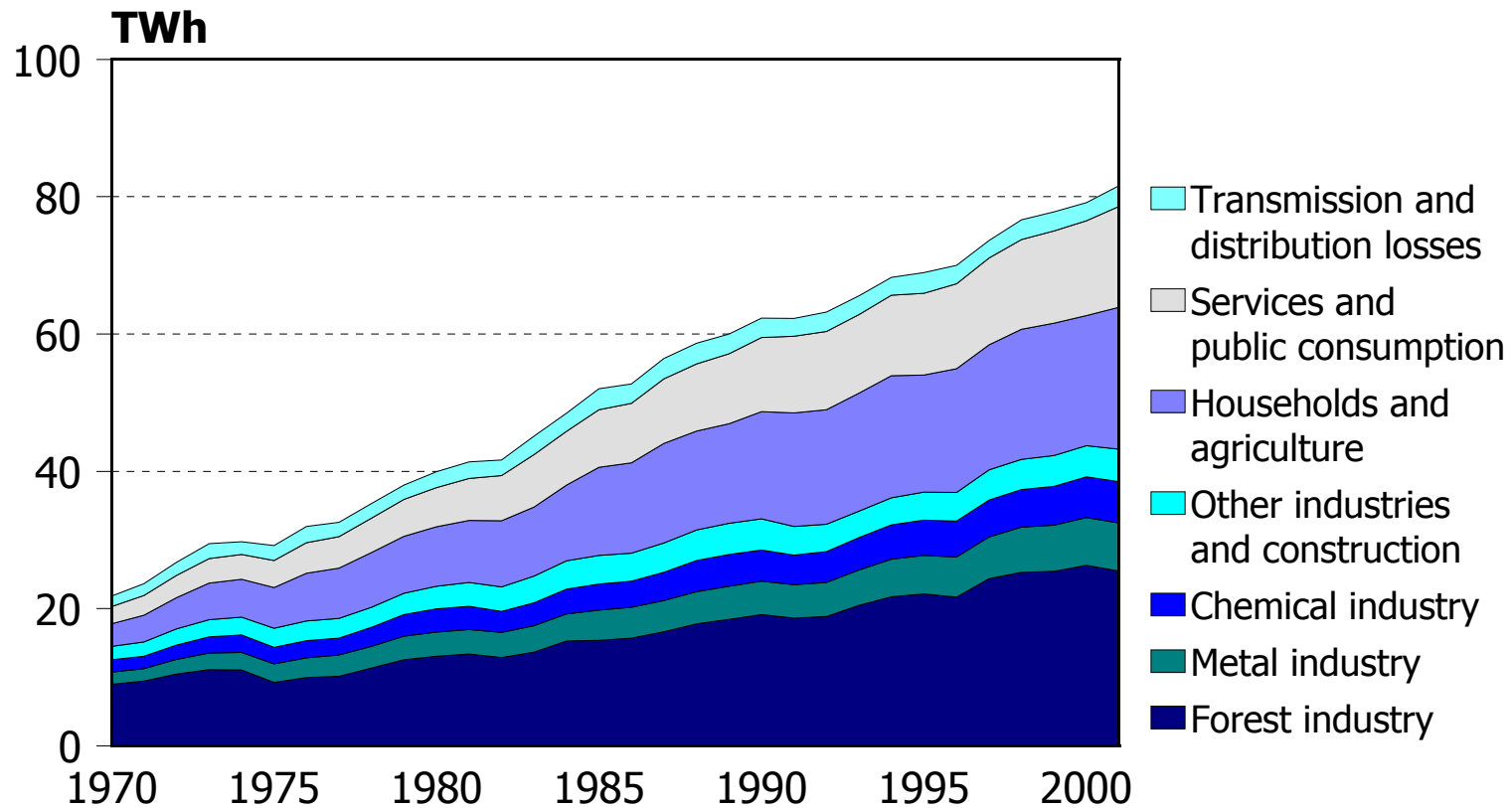


*Electricity supply 1970 - 2001**





*Electricity consumption by sector 2001**





Electricity consumption by end-use sector in 2001*

