



Monthly Weather Summary

The Weather of June 2006

Dry, warm and sunny everywhere

Although the weather during the second half of June was more unsettled than during the first, the month overall was drier, warmer and sunnier than normal everywhere. The dry and very sunny weather of late May continued during early June as high pressure remained centred close to the country. Little or no rainfall fell in most places during this period; at some stations in Leinster and Munster there was no measureable rainfall for 21 consecutive days between May 28th and June 17th. Rainfall totals for the month were generally between 20% and 60% of normal, although they were close to average values in the extreme north. It was the driest June for at least 10 years at most stations and the driest since 1975 at both Clones and Shannon Airport. The number of wetdays during the month (*days with 1mm or more rainfall*) varied between 4 and 8 over most of the country, less than half of the average for June. Mean air temperatures were between one and two degrees higher than normal generally and it was the warmest June for at least 30 years at several stations. Maximum temperatures rose above 20°C during the first 10 days of the month at the majority of stations, but they were closer to normal during the remainder of June. The opening period of the month was also extremely sunny, with more than 10 hours of sunshine in places on each of the first nine days. Overall, sunshine totals were between 10% and 60% above normal and it was the sunniest June since the late 1950s in places.

1st to 9th: An anticyclone centred just south or southeast of Ireland was the dominant influence, giving dry, sunny and very warm weather. Skies were clear throughout most of the period, although some fog developed at night and sea fog affected eastern and southern coasts at times. Daytime temperatures rose well above normal, reaching over 25°C at inland stations on the 8th, while minimum temperatures were low at first but rose to around normal values from the 4th onwards. Winds were light and variable in direction throughout the period.

10th to 16th: As the anticyclone moved away eastwards, south to southeasterly winds developed over Ireland, bringing an increase in cloud and a reduction in temperatures. The weather remained mainly dry, although a band of thundery rain in the extreme south late on the 9th moved over western areas on the 10th, while showers developed locally at times later in the period.

17th to 30th: A period of more unsettled weather, as Atlantic depressions moved close to the west and north coasts, bringing spells of rain or showers on most days. Rainfall amounts were generally small, although heavy falls were recorded on both the 18th and 29th. Daytime temperatures were a little below normal at first, but both maximum and minimum temperatures rose above normal later in the period. Southwest to westerly winds were strong at first, later backing to a mainly southerly direction and easing.

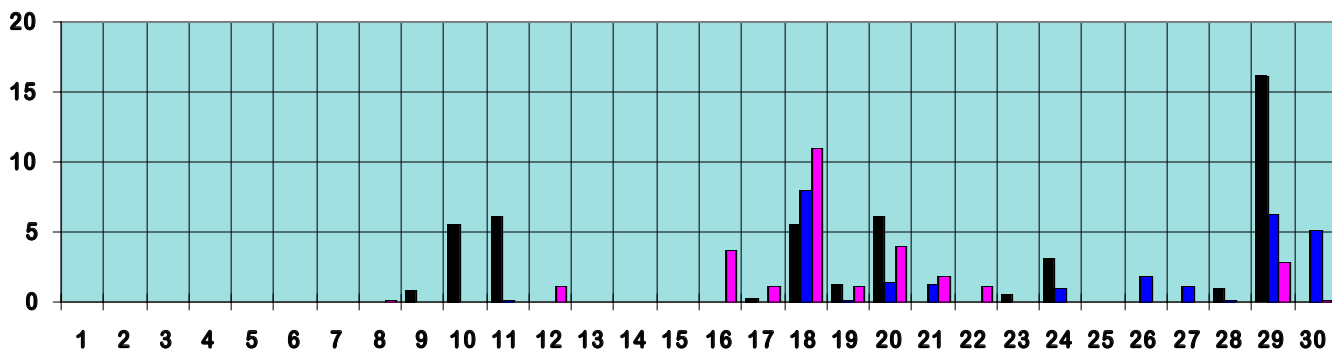
Wind and elements: Mean windspeeds for the month of between 6 and 12 knots (*11 and 22km/hour*) were below normal everywhere and were well below normal in the south. The strongest winds of the month were measured on the 10th and 21st, with the highest gust, 59 knots (*109km/hour*), recorded at Malin Head on the 21st; this was the highest June gust at the station since 1984. Thunderstorms were widespread over the western half of the country on the 9th and 10th, with isolated thunder also on the 6th and 18th. There were no reports of hail. Fog was most frequent during the periods 5th to 7th and 27th to 29th.

Extreme values

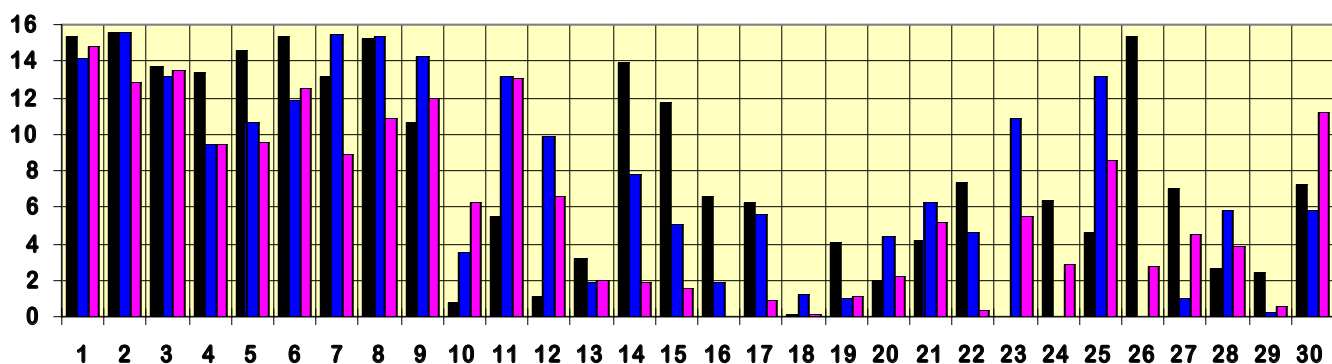
Rainfall	Highest total: 63.3mm at Malin Head Lowest total: 17.1mm at Rosslare (<i>its driest June since 1995</i>) Highest daily rainfall: 23.5mm at Malin Head on 18th
Temperature	Highest mean monthly temperature: 15.4°C at both Kilkenny (<i>its warmest June since 1970</i>) and Shannon Airport Lowest mean monthly temperature: 13.7°C at Knock Airport (<i>its warmest June since records began in 1997</i>) Highest temperature: 25.8°C at Claremorris on 8th (<i>its highest June temperature since 1996</i>) Lowest air temperature: 3.8°C at Birr on 23rd Lowest grass minimum temperature: -2.3°C at Birr on 23rd
Sunshine	Highest monthly total: 257 hours at Cork Airport (<i>its sunniest June since records began in 1962</i>) Lowest monthly total: 185 hours at Clones (<i>its sunniest June since 1996</i>) Highest daily sunshine: 15.8 hours at Malin Head on 25th

June 2006 Daily values at selected synoptic stations

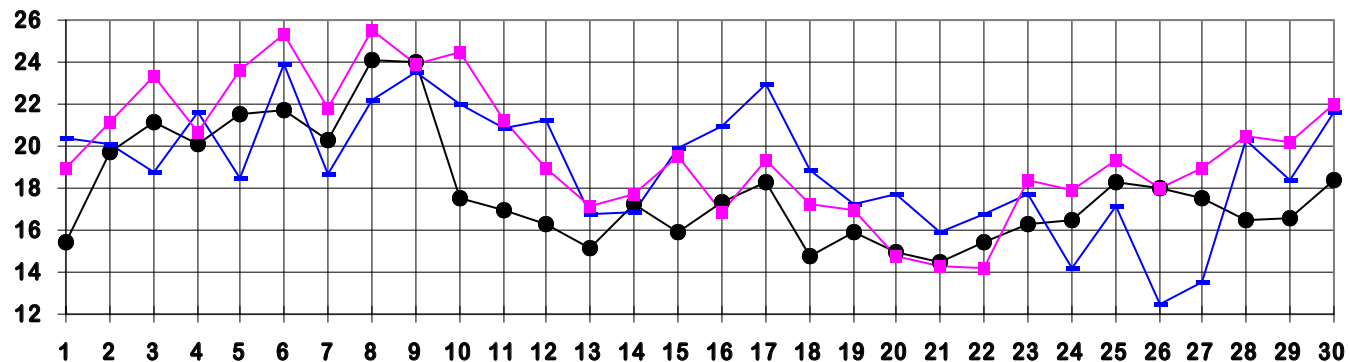
Rainfall (mm)



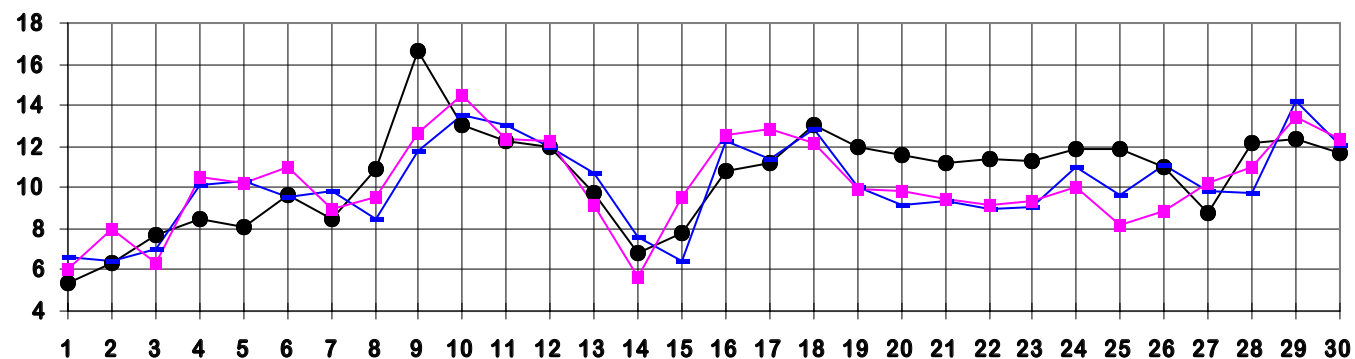
Sunshine (hours)



Maximum temperature (°C)



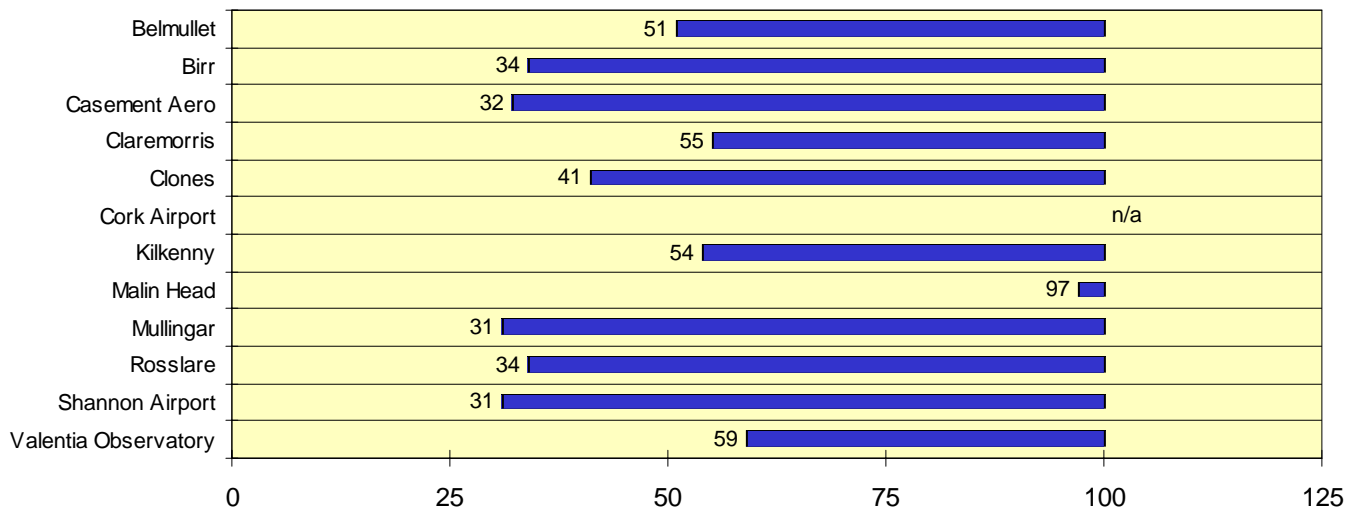
Minimum temperature (°C)



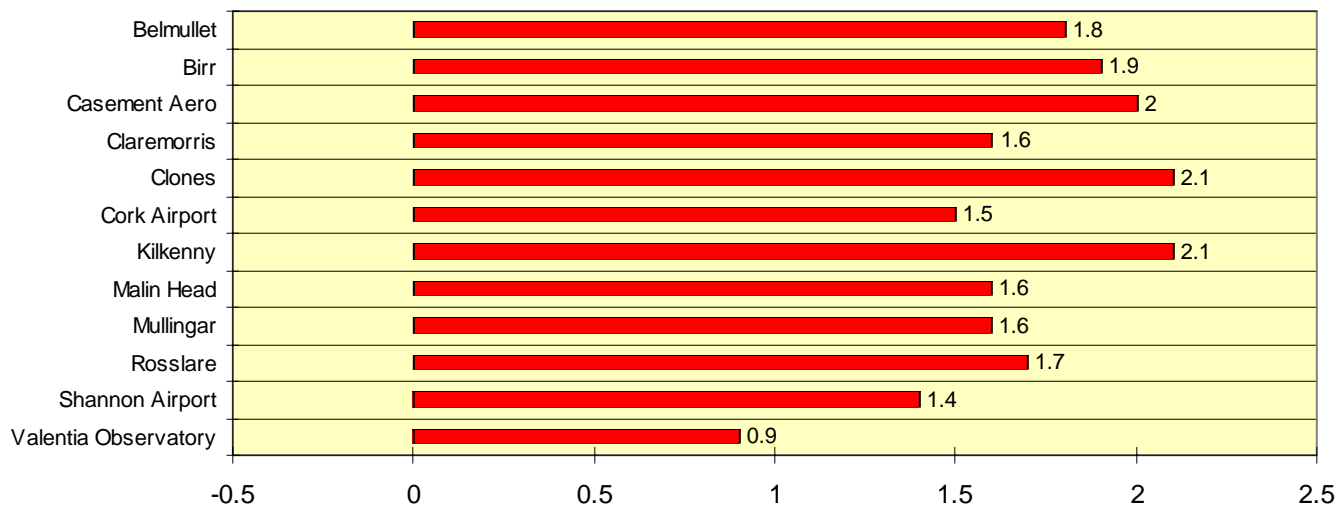
● Valentia Observatory - Dublin Airport ■ Clones

June 2006 Percentage / Difference from 1961-90 monthly normals

Rainfall (% of normal for period 1961-1990)



Temperature (°C difference from normal for period 1961-1990)



Sunshine (% of normal for period 1961-1990)

