

December 2004

- 2 Physical Facilities Readies for Winter
- 2 Hidden Benefits Fair
- 3 Holiday Trivia Contest
- 3 Bricker Hall
- 4 Woody Hayes Drive Bridge Opens
- 5 Annual MAPPA Conference
- 8 The "Big Move"
- 10 Cleaning South Oval & Mirror Lake Mess
- 12 Where Are They Now?

Campus Connections



Dedicated to the staff & partners of the OSU Department of Physical Facilities

Hines Sworn in as MAPPA President

The Midwest Association of Higher Education Facilities Officers (MAPPA) swore in **Becky Hines**, director of Building Services, as its president on November 2 at its 2004 Educational Conference in Cleveland, Ohio. The 850-member organization is comprised of facilities officers from universities and colleges throughout the Midwest. Becky not only has the honor of being the first person from Ohio State to serve as president but is the first woman president of the organization.

Becky was first introduced to MAPPA in 1995 when Associate Vice President **Jim Stevens** asked her to serve as the MAPPA newsletter editor, a position she held from 1995 to 2002. In 2003, Becky was voted president elect of the organization. In this role, she was responsible for planning and developing the educational programming for the 2004 conference. Those educational sessions received much praise and were highly successful.

As president, Becky will preside as chair of the MAPPA Board of Directors and prepare the agenda for the meetings of the board; give notice of and preside

over the meetings of the association's membership; have the power to sign all certificates, contracts, and other instruments of the association as authorized by the Board of Directors; have the authority to act if an emergency occurs between meetings of the MAPPA Board of Directors that is not covered by the bylaws of the association; represent or appoint someone to represent the association at events to which the association has been invited and should be represented; and receive recommendations from committee chairpeople on committee membership and make the appropriate appointments.

In her inauguration speech, Becky emphasized the benefits she has received from her involvement with MAPPA and encouraged others to take advantage. "We are a family of facilities professionals. Our APPA international and MAPPA regional family have provided a smorgasbord of opportunities and resources, and there is plenty to go around. During the coming year, I invite each and every one of you to bring someone with you to share in this feast ... a coworker, a colleague from another campus, a person on your campus in whom you see potential. I guarantee you that each and every member of this organization brings as much to the table as they take away. In short, I am a better employee for my institution because of my association with MAPPA and APPA."

Becky wrapped up her speech by thanking Jim Stevens for first inviting her to be a participant in MAPPA.

She then received the gavel from the outgoing president and began her year in office.

<http://www.m-appa.org>

Acknowledging More Veterans



In November's newsletter, we acknowledged Physical Facilities veterans for Veterans Day. That list of veterans had been given to us by Bill Hospodar of Ohio State's Human Resources, but we soon learned that his list was incomplete. Please contact him (293-3852, hospodar.1@osu.edu) to ensure that your Ohio State records are current. If you would like a commemorative poster, please e-mail newsletter_committee@pf.ueo.ohio-state.edu with your request.

Our appreciation for your service is additionally extended to ...

Ed Andrick	James Mays
Charles Barrowman	Roger Music
Ed Berlepsch	Homer Musser
Van Carpenter	Art Olverson
David Chafin	Dave Padula
Dale Cheney	David Patterson
Aaron Cole	Randy Rhoades
Charlie Conner	Paul Roush
Henry Dammeyer	Jeff Ruff
Larry Fulton	Tom Sedlock
James Gilkerson	Tom Seng
Matt Gillenwater	Roger Shay
Michael Hodge	Wes Shinn
John Keller	Myles Stanton
Jerry Lowery	Kevin Tracey
Jerry March	Wayne Tyler
David Mattison	Lou Wilson
	Dennis Woodson

**Hidden Benefits Fair
December 8**

page 2



Physical Facilities Readies for Another Ohio Winter

If you are one of the many central Ohioans who dread the coming of winter ice and snow, just remember that cleaning your driveway and sidewalk is a small task compared to making Ohio State's Columbus campus safe for students, faculty, staff, and visitors after inclement weather such as snow or ice.

Typically when a storm arrives, Ohio State police officers serve as the best monitors for road conditions. When an officer believes conditions warrant or will warrant the services of the Physical Facilities snow removal team (which consists of more than 125 staff members and contractors who clean the entrances of more than 45 campus buildings), he or she contacts the Physical Facilities Service Center, which is staffed 24 hours a day, 365 days a year.

"When the Service Center is notified by the police department, **Art Olverson** and **Larry Reed** (Campus Shop) are notified to begin the call-in process," said **Kevin Wagner**, director of the Roads & Grounds division. "About 16 staff members from the Campus Shop and 35 from the Landscape Operations area are called in to begin clearing 39 lane miles of roads and 110 miles of sidewalks," Wagner said. If the storm occurs overnight, the staff is usually called in at 5 a.m. to help get the main campus roadways and sidewalks ready before 7:30 a.m. classes.

"The main campus normally takes about six to eight hours to totally clear, including sidewalks, roads, and loading docks," he said. Loading docks are important areas that many people forget about but are vital because hundreds of vendors make deliveries on a daily basis to more than 150 docks all over campus, Wagner said.

Building Services staff are also quick to respond to a snow call. "Once the decision has been made, the Service



Center or the region superintendent will contact employees on the call-in list to notify staff of strategic information," said **Becky Hines**, director of the Building Services division. "Building Services is responsible for clearing building entrances and stairs leading to academic buildings. We are ready with more than 54,000 pounds of ice melt that has been distributed to our regions. The ice melt alone costs more than \$9,800."

Nine contractors are responsible for the areas outside of more than 75 campus buildings. "Physical Facilities has established a protocol list for all campus buildings, which determines that areas that are cleared first," said **Debbie Eskelson**, assistant director for



Contract operations in the Building Services division. "Buildings with life safety issues or high traffic buildings are served before lower-traffic areas are."

When a storm is predicted more than a day in advance, the Roads & Grounds division will apply a saltwater mixture to campus roadways and sidewalks, Wagner said. "This mixture soaks into the roadways and sidewalks and, when it dries, salt remains on the surface. We apply the brine during normal working hours, which helps stretch the division's limited budget by avoiding some overtime hours."

In past years, trucks and smaller vehicles spread between 65 to 80 tons of rock salt each time it snowed. The brine system has significantly reduced the amount of salt necessary to keep campus roadways and sidewalks from becoming a hazard to campus drivers and pedestrians.

The system was developed and fabricated by a team in the division's

Vehicle & Equipment Maintenance Shop. On September 9, the team was honored at the annual SUCCESS awards with the Michael Blankenship Pioneer Award for significantly improving a process within the Office of Business & Finance. —D.S. •



Annual Hidden Benefits Fair

Wednesday, December 8

The 10th annual Hidden Benefits Fair will be held from **11 a.m. to 2 p.m.** on Wednesday, December 8, in the French Field House, 460 Woody Hayes Drive.

Sponsored by the University Staff Advisory Committee, the event showcases many **discounted or free services and products** available to Ohio State faculty and staff members. Admission is **FREE**.

Hot dogs and soda will be available at discounted prices. Make sure you stop by to enjoy lots of giveaways, door prizes, and information. For a list of vendors, visit USAC's website at http://usac.osu.edu/hidden_benefits.php. •

Bike Racks

I just wanted to pass along our thanks for installing the bicycle racks around Davis Heart & Lung. We've had several positive responses from the occupants of our building, and the racks are used daily. We (and our trees) are grateful! Thanks again for making this happen so quickly.



Chris Brakenbury

Davis Heart & Lung Research Institute

Consumer Alert - "Check 21" Banks Move to Electronic Check Processing

COLUMBUS - Attorney General Jim Petro recently reminded consumers of the changes that occurred on October 28 about the way checks are processed because of a new federal law. The Check Clearing for the 21st Century Act ("Check 21") is designed to make a more efficient means of clearing and posting check payments.

The law allows a financial institution to convert your check into an electronic image that can be instantly presented for payment. Previously, banks must physically move original paper checks from the bank where the checks are deposited to the bank that pays them. This was inefficient and costly.

"The days of writing a check, putting it in the mail, and having two days to get the money in the bank to cover it are over. Check 21 will clear checks faster and consumers need to be prepared," said Petro.

Financial institutions using Check 21 will not return original checks but will provide a "substitute check," which will be the electronic image made of the original check cashed. The electronic image of the check will be the legal equivalent of an original check as proof of payment. If a bank or its customer requires a paper check, the bank can create a paper "substitute check" from the electronic image.

Attorney General Petro offers these tips to help you better understand Check 21:

- Financial institutions are not required to participate in Check 21, so ask your bank if it participates.
- Federal law requires banks and other financial institutions to provide notice to customers regarding the Check 21 policy. Fully understand how the policy affects you and your rights.
- Checks will clear faster. Be sure to have a sufficient balance when paying by check.
- A substitute check is a paper copy of the front and back of the original check. A substitute check is legally the same as the original check if it accurately represents the information on the original check and includes the following statement: "This is a legal copy of your check. You can use it the same way you would use the original check."

- Check 21 contains a special refund procedure (called "expedited recredit") for a consumer who suffers a loss related to a substitute check he or she received.

For more information on Check 21, visit the Federal Reserve website at <http://www.federalreserve.gov> or Attorney General Petro's website at <http://www.ag.state.oh.us>.

Reprinted with permission from http://www.ag.state.oh.us/press_releases/2004/press_release_20041027.htm.

Alumni Bar-be-que

At the last minute, I contacted John Keller [North Shop] and his crew to establish electricity for our large alumni bar-be-que. They took our last-minute request, got working on it right away, and we had electricity within 24 hours' notice (keep in mind, being the first home game, this was already a very busy weekend for them).

The team went above and beyond the call of duty for us. John and his small staff are outstanding people to work with and accommodated us with a smile. Events are numerous on campus and very important to our customers relations, so I appreciate working with such a highly motivated crew, whose standards are high.

Kerry Lynch Gastineau

Director, Alumni Affairs & Special Projects



Holiday Trivia Contest

Answer the most questions correctly and win a Buckeye gift, courtesy of the department. In case of a tie, there will be a drawing. Pick up the questionnaire at the Central Service Building, Room 150C, or download it at http://www.physfac.ohio-state.edu/newsletter/2004/2004_dec_trivia.pdf. Deliver your answers to "Holiday Trivia Contest," Central Service Building, Room 150C, by December 15 at noon. •

Bricker Hall Faces Behind the Façades

John W. Bricker gained fame during a distinguished political career that included terms as governor of Ohio, U.S. senator, and vice presidential candidate. Bricker had strong ties to Ohio State. He played on the baseball team, earned an undergraduate degree in 1916, and graduated from the law school in 1920. He was a member of the university's Board of Trustees from 1948 until 1969.



A native of Mount Sterling, Ohio, Bricker was state attorney general before serving as governor from 1939 to 1945. In 1944, he campaigned for the Republican presidential nomination. He lost to New York governor Thomas E. Dewey, but joined Dewey's team as his running mate and carried Ohio by 12,000 votes. It was not enough, though, and Franklin D. Roosevelt was elected to a fourth term.

Bricker served 12 years in the U.S. Senate beginning 1947. Shortly after taking office, he survived an assassination attempt when a former Columbus resident, upset over losing money in a local savings & loan during the Depression, fired two wild shots at him in a Senate subway. Bricker returned to Columbus after his terms in the Senate and founded a successful law practice. He died in 1986 at age 92.

Ohio State's Administration Building, completed in 1924, was renamed Bricker Hall in 1983. Today it houses the president's office along with those of other high-level administrators, the Office of Academic Affairs and other administrative units, and the Department of Sociology.

Brent LaLonde, Ohio State Alumni Association magazine, October 2004. Reprinted with permission. For more information, visit <http://www.ohiohistory.org/onlinedoc/ohgovernment/governors/bricker.html>.



Woody Hayes Drive Bridge Opens to Traffic in December

Work on the \$9.8 million Woody Hayes Drive bridge and steam line extension will continue through spring of next year, but all four lanes of roadway are scheduled to open to traffic the week of December 6.

The department is working on plans for an opening ceremony. The Honorable Steven B. Hayes, a Franklin County Municipal Court judge and son of legendary Ohio State football coach Woody Hayes, has been invited to serve as guest of honor. Plans call for Judge Hayes to ride in the department's 1951 Mack pick-up truck and become the first passenger over the new bridge. He would be followed by several former players of his father's football teams, who also would be riding in classic automobiles.

Early History of the Bridge

As campus grew larger after the turn of the century, open spaces for athletics and military drills grew scarcer. In 1912, Ohio State joined the Big Ten athletic conference and began to draw large crowds to its football games. The university began serious planning for a football stadium in 1916.

Originally, the Athletic Board accepted a plan by Clyde T. Morris, a professor of engineering, to build a coliseum near Ohio Field, where the team had played since 1898. In April 1917, however, the university's Board of Trustees approved a plan by the Office of the University Architect to move the university's farm from the east side to the west side of the Olentangy River, freeing 90 acres for a stadium, athletic fields, drill grounds, and a new power plant.

By 1920, plans for the stadium complex had been set out in greater detail. Because the university's former farmland was prone to flooding, the plan called for straightening and widening the river from Lane Avenue to south of King Avenue and building a levee along the east bank.

A boulevard along the levee would connect to a new east-west

road crossing the river on a new, longer concrete bridge that would replace the railroad bridge already at the site. This plate girder bridge was a spur from the Hocking Valley Railway and had been constructed over the Olentangy River in 1904 to bring coal to the university's power plant. Morris had served as the engineer and project superintendent when the bridge connecting the campus to the railway was built.

Fundraising Campaign

A public fundraising campaign to build the new stadium kicked off with Stadium Week in Columbus in October 1920. The week-long program featured parades, music, and speeches on the Capitol grounds. By January 1921, the university had received pledges of more than \$1 million. University trustees approved the plans to build Ohio Stadium the following May, and the groundbreaking ceremony was held in August. The architect of the new stadium was Howard Dwight Smith, an Ohio State graduate and a professor of architecture from 1918 to 1921.

Although Ohio Stadium was built without state funds, state lawmakers appropriated \$124,000 in 1920 to build a new bridge to give access to the stadium from the west side of the river. The state's auditor held the funds until the university could show that the public had pledged enough money to build the stadium. Morris designed the new bridge to be much wider than the railroad bridge in anticipation of proposed flood

control projects for the Olentangy River. The levee and river-straightening project envisioned in the early plans for Ohio Stadium did not happen until the 1930s, when work relief laborers were used to carry out the project.

Construction Begins

N.R. Porterfield of Youngstown, Ohio, was awarded a contract by the university's Board of Trustees to construct the bridge, which called for the project to be completed by July 1922. By February 1922, one pier of the bridge had been completed; a month later work on the bridge was described as "well advanced." By the beginning of August, two arch spans were nearly complete and the railings at the east end were soon to be installed. "Unforeseen difficulties" resulted in a two-month delay before the structure was completed.

The bridge was intended to serve several functions. Its primary purpose was to connect the main campus with the new farmland across the river. Railroad tracks along the center of the bridge allowed continued rail access to the power plant and permitted passenger rail service to the stadium. The bridge was designed to allow a maximum of water to flow, reducing flood events during high water.

In 1960, the bridge deck was



widened about 40 feet to accommodate new sidewalks. In 1970, natural gas turbines were installed in the McCracken Power Plant, eliminating the need for coal deliveries. The Board of Trustees approved the removal of the spur in April 1970 as the construction of State Route 315 cut off access to the old Hocking Valley line.

By 1981, the bridge was in poor condition. In 1982, Stadium Drive was renamed Woody Hayes Drive to honor Wayne Woodrow Hayes, who had coached the football Buckeyes to three national championships and 13 Big Ten Titles from 1951 to 1978. Repairs on the bridge began in November 1983, and by June 1984, the estimate for repairs was up to \$875,000. In the summer of 1991, the bridge was repaved, the concrete was resealed, and the sidewalks and curbs were replaced.

Refurbishing Needed

A detailed engineering inspection in February 1995 indicated a need for extensive structural rehabilitation. A 10-inch steam line was also planned for installation under the bridge to be connected to the existing line near St. John Arena and Agricultural Engineering. The new design would allow the opening of the river corridor and would accommodate a bike path along the east bank of the Olentangy River, without encroaching on the waterway.

The project was originally approved by the Board of Trustees in July 1999. The final budget on this project was \$9.8 million. "We are pleased that the replacement for the Woody Hayes Drive bridge is within budget and will serve future generations of Ohio State students for decades to come," said University Engineer **Ramesh Bahl**.

* * *

Physical Facilities staff members working on this project included **Mark Hartmann**, **Paul Sherwood**, and **Mark Scott**, and former employee **Tricia Petras**. For more information about the project, contact Mark Scott (247-5069, scott.95@osu.edu). -D.S. •

Physical Facilities Represented at the Annual MAPPA Conference

MAPPA – the Midwest Association of Higher Education Facilities Officers – held its annual October Educational Conference in Cleveland this year. Ohio State was well represented with four Physical Facilities staff members giving presentations to their fellow facilities professionals. With **Becky Hines** of Building Services serving as the Program Committee chair for the 2004 conference, it was only natural for her to draw upon the expertise and professionalism of her Ohio State

in Infrastructure Master Planning." Presenters were asked to bring 50 copies of their presentations to pass out to attendees, and the facilitator of the session had to make an additional 55 copies and still did not have enough to give to everyone who packed the session!

Ohio State also was represented well by **Judy Vertikoff** providing a presentation on "Access Control and Alarm Monitoring." This session was so informative that even the dreaded school up north admitted they are behind in this technology and would like to visit us to see what we are doing. **Steve Elliott** from Environmental Health & Safety presented "Developing an Emergency Preparedness Plan." This

session was well attended, and Steve presented clear, concise directions on how to develop and implement a plan.

These and other presentations

given at the conference are available on the web at <http://www.mappa.org/presentations.htm>. It is not an easy task to develop a presentation and then stand before colleagues and present



Paul Sherwood



Jed Dertinger



Steve Elliott



Judy Vertikoff

colleagues when developing the educational sessions.

Physical Facilities' training coordinator **Jed Dertinger** presented "OSHA Training – Success with Limited Resources," along with two colleagues from Purdue University. This proved to be quite a popular session with the trio of presenters giving out prizes to participants.

Paul Sherwood from the University Engineer's Office co-presented with a business partner from Woolpert. Their session, presented to an overflow crowd, was "New Approaches



it. A special thanks goes to those with the courage and enthusiasm to do so. They represented Ohio State well and made Physical Facilities proud. •

Recognition

on-line at ... <http://www.physfac.ohio-state.edu/zaphir/recognition/>

Congratulations!

Marverline Madison, on your retirement of 39+ years—the third longest-tentured employee in Physical Facilities' history.

Quality Peak Team

October 2004

Building Services & Maintenance Self-Study

Mardene Kelley Becky Hines

The Senate Fiscal Committee and Senior Vice President for Business & Finance tasked



Physical Facilities to perform a self-study of Building Services and Maintenance as part of a review of non-academic departments. The preparation of this self-study required months of information gathering, writing, and editing. The report was submitted by the deadline and in a highly professional manner. Becky and Mardene played key roles in the preparation of this special project by demonstrating cooperation, devotion to duty, professionalism, and in-depth thinking.

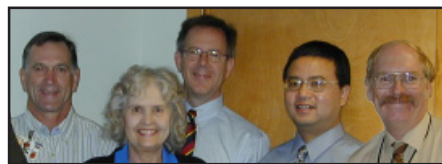
Ramseyer Hall Replacement of Building System Clocks

Greg Roebke Myles Stanton

These men were given a task not normally assigned to them — replacement of six building system clocks in Ramseyer Hall. While they were performing the unfamiliar task, they came across an over-voltage problem with the system that may have caused the damage. They found a solution and put the clocks back into service before the quarter began.



Cannon Drive "S" Curve Rebuild Project



Glenn Gerhart Nancy Sofer
Steve Volkmann Bob Wajnryb
Bo Zhang

These individuals contributed to the Cannon Drive "S" Curve project. This project was initially scoped to just replace the deteriorated asphalt pavement. However, by designing the project in-house instead of hiring outside consultants, the project was able to utilize the savings to add in a few aesthetically needed improvements to the stadium area. The project was finished ahead of schedule, under budget, and with top-notch workmanship.

Gibraltar Island Roofing Project

Bill Matteson Paul Roush
Bill and Paul were nominated for their commitment of time, skill, and professionalism during a recent roof project at the island. The task of demolishing a rolled roof and removing water-damaged sheathing and roof joists was completed in a timely fashion and without any damage incurred to the lab contents. These efforts saved Physical Facilities more than \$2,000 and allowed operations to continue uninterrupted.

Quality Peak

October 2004

Reactor Lab Project Jim McGee

Coordinating, Planning & Renovation
Jim is being recognized for his excellent involvement and oversight in electrical upgrades. He made sure deadlines were met, despite the complexity of the project. He worked well with the customer and the contractor, getting the project started on time and completed on time.



Employee of the Month

October 2004

Randall Roper East Region

Randall continues to strive in exceptional customer service. He effectively produces a high quality of job service no matter what the job calls for. His customers have communicated the level of service they have received from Randall as well.



Gary Peters South Region

Gary's attendance is absolutely perfect. He arrives daily for work with a good attitude and is willing to help out in any way that he can. He is always available for emergencies of any sort and never, ever complains. Gary is an ideal worker and a pleasure to be around.



Peggy Barylak Human Resources

Peggy is being recognized for her interpersonal relationship skills. She has been very successful in resolving relationship issues between individuals in our work area. Three separate instances had developed, and Peggy was successful in the resolution of those concerns.



SUCCESS Coins

October 2004

April Brown
Barry Mazik 2
Bill Keigley
Bill Matteson
Bobby Ropp
Brad Seaholm

Carolyn Neal-Slappy
Chad Robinson 2
Charles Barrowman
Chrystal Cain
Chuck Kaiser
Clarence Bowen

Did you know? ... In an effort to solicit cash to pay for a charity Christmas dinner in 1891, a large crabpot was set down on a San Francisco street, becoming the first Salvation Army collection kettle.

- | | |
|----------------------|--------------------|
| Craig Knotts 2 | Karim Mohamad 2 |
| Crystal Roland | Kathy Ross 3 |
| Darcina Nixon | Kelly McCamey |
| Darez Hampton 2 | LaDonna Cottrell |
| Dave Giesler | Larry Wallington 2 |
| David Abbott | Linda Hicks |
| David Sweet | Lydia Kirk |
| Dean Warren | Mark Herbster |
| Debbie Speicher | Mary Ann Carleton |
| Dennis Willis 2 | Matt Gillenwater |
| Don Capps 2 | Michael Lipsky |
| Donald Harris 2 | Neil Liggett 2 |
| Earl Weekly 2 | Norma Taynor |
| Ed Andrick 2 | Pat Myers |
| Elizabeth Saunders 2 | Paul Roush |
| Ellsworth Ragland | Paula Cross 2 |
| Ema Crowder | Peter Kerns |
| Gary Eader 2 | Phyllis Rawlings |
| Gaylan McClendon | Rick Andaverde |
| Gerald Huffman | Rick Boling |
| Greg Roebke | Rick Powell |
| Guido Ciotola 3 | Rod May |
| Harrison Ray | Rosemary Vest 4 |
| Howard Plantz | Saurabh Sedha |
| Isaiah Bondurant 2 | Scott Kearns |
| Jane Tucker | Si Montgomery 2 |
| Jeff Ruff | Steve Shaw |
| Jeff West | Sue Donohoe |
| Jim McGee | Susan Clemente |
| Joe Barnes 2 | Terry Devin |
| Joe Ebright | Terryl Davis 2 |
| Joe Harris | Thomas Rousey |
| John Coppeler | Tim Hayba |
| John Keller 3 | Tim Stupp |
| John Kennedy | Tom Frenz |
| John Phillip 2 | Tom Lemaster 3 |
| Jon Taylor | Tonya Reed |
| Judy Dunbar | Wayne Tyler 3 |
| Kahtana Murphy | Williard Evans 3 |
| Kara Lowe | Willie Als |

Bah Humbug!

“Editorial,” **Founded in Fact ...**

For many people, the holiday season is the “most wonderful time of the year,” as the song goes, but it can also be one of the most stressful times of the year. The season conjures up thoughts of your own childhood—the excitement and the expectation. It is the “expectation” that often creates the problem. Many of us year after year try to make it just a little bit better than it was the previous year. We are caught up in the more and better routines, from decorations to gifts, from social gatherings to the food we eat—we are constantly striving for that memory thing. If you get right down to it, we are often too busy with our various to-do lists and the time constraints artificially placed by us, that we wouldn’t notice a memory if it happened directly in front of us.

This season, slow down and take time for yourself. Reassess and prioritize. Adjust expectations and pace yourself in planning and accomplishing the various tasks that need to be done over a wider time frame. Family members can get involved and accomplish delegated work, and if something on your list doesn’t get done, oh well, you’re probably the only person who would know! Attempt to get away from the commercialization of the holidays. Donate some time for those less fortunate, practice your faith, go caroling, bake cookies with your family, reconnect with a friend, make a phone call, have lunch, watch a crackling fire, listen to music, or simply hug your loved ones. These are memories that don’t take a lot of time, a lot of thought, or a lot of money.

The little things make the memories. Expectations are easily filled for a 10-year-old, but those expectations get bigger as we get bigger, along with the economics associated with bringing these expectations to completion. The Currier & Ives Christmas of our dreams is still possible, but we need to be in the right frame of mind to simply let it happen. Enjoy the holiday season! •

Learning Gardens - New Irrigation Lines

The Learning Gardens, located just north of Howlett Hall, is an interactive working area for students from the School of Horticulture & Crop Science. Established in the spring of 2002 as part of the Chadwick Arboretum (with donations from the Kline Mayer and Van Fousen families), it consists of multiple plant species in three distinct gardens that serve as both decorative and educational. The Kline Mayer perennial garden alone covers more than 6,000 square feet. The labor and maintenance of the gardens, which are handled by students, are paid for by the May-Hew Scholarship Foundation.

With the leadership of **John Mott**, superintendent of RecSports Field/Campus Irrigation, his crew installed a 250-foot long connection line and other irrigation lines last fall. Now irrigation of the Learning Garden’s Annual Trials and all the potted plants within the three gardens is fully automated. Students and staff no longer have to worry about coming in on weekends to water plants as a result of John’s new innovations!

John is currently—after a 35-year hiatus—taking classes here at the Department of Horticulture and Crop Science to earn his B.S. in Agribusiness specializing in turfgrass. John will be graduating in spring 2005. —M.W.

<http://hcs.osu.edu/news/detail.jasso?id=275>
Photo courtesy of Department of Horticulture & Crop Science. •



Dr. Pablo Jourdan discusses irrigation installation with John Mott. •



- EHS Melanie Carter-Espinoza 292-1284
Mgt & Planning Sally Blatt 292-0428
Operations Jacqui Shepherd 688-5850
Kroger Gift Cards Linda Hicks 292-0257

Distinguished Staff Award

Nominations are open through January 10 to honor 12 Ohio State staff members for their outstanding leadership and accomplishments in service to the university.

Criteria - Award recipients will be selected on the merits and strengths of the following contributions ...

- Enhancing the quality of work-life in ways that make a significant difference for colleagues and customers.
- Providing outstanding and ongoing excellence in services to faculty, staff, students, and/or other customers.
- Developing creative solutions to problems that result in significantly more effective and efficient department or university operations.

Eligibility - This award is open to all part-time and full-time staff members with a minimum of five years of continuous service at Ohio State, in a regular non-faculty position.

Award - Each award recipient will receive a crystal trophy, a \$1,500 cash award, and an increase of \$700 to his or her base salary.

Nominations - Must include the following ...

- A completed nomination form.
- A nominating statement citing specific accomplishments and services of the nominee (double-spaced, three pages maximum).
- Up to three letters of support that represent the diverse group of customers/colleagues who have personal knowledge of and who have benefitted from the nominee's services.
- Ten copies of all information, collated, stapled, and 3-hole punched.

Deadline - January 10, 2005.

For more information, contact Ned Cullom at 292-4341 or visit <http://hr.osu.edu/special/dsa.htm>. •

The "Big Move"

By Ramesh Bahl, PE, CEM
University Engineer

Laundry Building

This project is now in the home stretch. The Tin and M/E Shops have started packing their stock of spare parts and their hand tools. The Electrical contractor (Royal Electric) has disconnected most of the Tin Shop's equipment. The general contractor has removed glass windows and boarded them up from the Maintenance Building in order to allow getting the larger Tin Shop equipment out to be relocated. Myers Machinery Movers is on-site and is starting to take pieces and parts to the new locations.

The construction manager is **Colin McBride** (mcbride.62@osu.edu), 292-7387, University Engineer's Office.

Shop/Garage Relocation

The project will build a new Campus shop building, Recycling Facility, and salt dome near the Printing Facility off Kenny Road. The snail-paced land acquisition process is not complete. The City of Columbus Right-of-Way Deed is now at the Franklin County Recorder office to be recorded. Once recorded, the Deed becomes official, allowing us construction on the portion of land previously owned by the City. The bid documents are ready for advertisement in December. The construction of the project is expected to last 14 months.

The project manager is **Bo Zhang** (zhang.403@osu.edu), 292-0707, University Engineer's Office. •

Tidbits

Learning Opportunities

Review this month's classes at ... <http://www.physfac.ohio-state.edu/zaphir/learning/>. Register on-line or call **Jed Dertinger** at 688-3289.

Welcome New

Building Coordinators

Joanne Holland (115A Denney Hall - 688-3902), **Jeff Thornhill** (B036 Graves Hall - 292-0850), **Lisa Gang** (Lobby Lazenby Hall - 292-2953).

St. Nicholas

St. Nicholas (Santa Claus) was a real man born in A.D. 280 in Asia Minor, who later became bishop of Myra (now Demre, Turkey). It's not certain that what all we know about him is 100 percent accurate and true, but it's been said he was born to a wealthy family. Upon inheriting his father's fortune, he gave it all away to the poor. It's been claimed that he was present at the First Council of Nicaea A.D. 325 and was imprisoned by Emperor Diocletian for being a Christian. He was later released by Emperor Constantine and died in A.D. 343, with December 6 being the date observed for his death.

He was noted for his begging money for the needy and for disguising himself from being recognized (because he was a very popular bishop of the church), then going around villages and giving to the poor children. Many stories and legends have sprung up about him. After his death, it has always been quite popular to dress like him and give out gifts to children at Christmas time. •



The **Community Charitable Drive** at Ohio State continues through December 10.

This annual campaign offers university staff an opportunity to donate to more than 300 local charitable organizations that serve the central Ohio community. By using the "charity code," your gifts can be directed to a cause that is most important to you.

If you have any questions or wish to make a donation, contact the following...

EHS	Nancy Voge	292-1284
Mgt & Planning	Brett Garrett	292-1349
Operations	Ernie McVay	292-2885

On the Horizon



Get the latest about the **Oval restoration** at <http://www.physfac.ohio-state.edu/2003/oval/>.

Sidewalk closures are available at <http://www.constructionawareness.com/sidewalks>.

Traffic updates are available at http://www.osu.edu/news/construction_update.php.

- Much of **Lane Avenue widening** is complete. Walkways, lighting, and landscaping should be completed in December with the entire project finished by spring 2005.
- The **Woody Hayes Bridge** project will be completed in December when the new south span is finished. After the new span opens, repair work will occur on the north walk and may require one lane and the north walkway to be closed for a period of time.
- Construction on the **Neil Avenue Garage** and the **Larkins Hall replacement** is well underway and appx. on schedule. Phase 1 is expected to be completed by February 1, 2005, and Phase 2 will commence immediately after Phase 1.
- Both **Page Hall** and **Hagerty Hall** are mostly completed. The heavy traffic that has occurred along College Road and Hagerty Drive for much of Autumn Quarter due to furniture and move-in deliveries should begin to lighten up.
- The new **Physical Sciences Research Building** is nearing completion. Periods of heavy traffic on 19th Avenue can be expected to continue through March 2005 because of move-in and deliveries.
- Construction on the new **Biomedical Research Tower** continues with utility relocations and general site preparation. This facility will be located along 12th Avenue next to the Biological Sciences Building. The preliminary completion date is August 2006.
- Construction on the **replacement for Robinson Laboratory**, housing the Mechanical Engineering Department, continues. The preliminary completion date is late 2006.

- Magruder Avenue will remain closed until completion of the project and 18th Avenue has been closed to vehicular traffic except for construction vehicles.
- Except for a few minor walks, the **Oval sidewalks** have reopened to pedestrian traffic. The lawn will remain fenced until late spring 2005.
- The project to repair the **Dreese Lab** site walls continues. There should only be minor changes to pedestrian paths during the project, which should be completed in December.
- The **Psychology Building** project has begun between Cunz Hall and Lazenby Hall prompting the Cunz Hall parking lot to be closed. Pedestrian access to Wilce Student Health Center and Cunz Hall has been maintained. The project should be completed by August 2005.
- Classroom renovations in **Kottman Hall** have begun and should be completed in December.
- Various infrastructure and building improvement projects are either under construction or will be shortly, including roof replacements, roadway improvements, and chilled water distribution system expansion.

Board of Trustees

The board authorized the university to enter into design contracts for the following projects:

- Upgrade of elevator equipment to meet current codes in two elevators in the 9th Avenue Parking Garage and a single elevator in the 11th Avenue Parking Garage. Preliminary project cost estimate is appx. \$515,000.
- Renovation of Room 068 in Bevis Hall, 1080 Carmack Road, to expand the Transgenic Zebrafish Facility, currently in Room 072. Preliminary project cost estimate is appx. \$236,319.
- Renovation of restrooms in Bradley Hall, 221 West 12th Avenue, and Paterson Hall, 191 West 12th Avenue. Preliminary project cost estimate is appx. \$1.2 million.
- Renovation of Jennings Hall, 1735 Neil Avenue, for use by the College of Biological Sciences, Classroom Pool and the Mathematical Biosciences Institute. Preliminary project cost estimate is appx. \$27.9 million.
- Renovation of office and teaching lab space on the 4th and 5th floors of Smith Laboratory, 174 West 18th Avenue, to accommodate the swing

space for the Jennings Hall project. Preliminary project cost is appx. \$900,000.

- Upgrade of the electrical service to Stradley Hall, 138 West 11th Avenue. Proposed project cost is appx. \$1 million.
- Renovation of the first floor of the Women's Field House, 1801 Neil Avenue, to include the creation of a kitchenette, an accessible restroom and the addition of an A/V projection system. Proposed project cost is appx. \$250,000.

The board authorized the university to seek construction contracts for the following projects:

- Renovation of three cold rooms and the roof over the corridor of Scott Hall, 1090 Carmack Road, for the Byrd Polar Research Center. Construction document project cost is \$259,160.
- Replacement of two chillers in Mendenhall Lab, 125 South Oval Mall. Construction document project cost is \$225,000.
- Replacement of the roof on Townshend Hall, 1885 Neil Avenue. Construction document project cost is \$672,340.
- Completion of Phase 2 of the roof replacement project on the Veterinary Hospital, 601 Tharp Street. Construction document project cost is \$1.08 million.
- Maintenance upgrades and replacements of the elevator and escalator, fire alarms, and miscellaneous electrical upgrades to the Wexner Center and Mershon Auditorium, 1871 North High Street. Construction document project cost is \$2 million. •




Editorial Committee
 Sharon Bierman, Design & Layout - 292-5725
 Don Capps, North Shop - 292-2717
 Linda Hicks - 292-0257
 Gary Isaacs, EHS - 292-1284
 Ernie McVay - 688-8563
 David Sweet - 292-2377
 Michael Woods, Bldg Automation - 292-5558
newsletter_committee@pf.ueo.ohio-state.edu

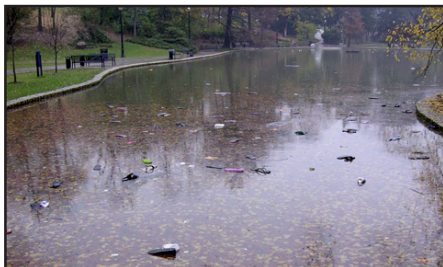
"Campus Connections" is published for staff members of the OSU Department of Physical Facilities and for our partners in academic excellence.

Roads & Grounds Staff Clean South Oval & Mirror Lake Mess

A failed attempt at a world record pillow fight and 3,000 students celebrating an early football victory over the Michigan Wolverines led to substantial damage to the campus grounds near the South Oval and Mirror Lake on November 17-18.

Autumn rains made conditions slippery on the grass surrounding the west end of Mirror Lake, and the large crowds were simply too much for the area to handle, said **Kevin Wagner**, director of Roads & Grounds.

"We are estimating that it will cost the university between \$20,000 and \$30,000 to clean up all the mud, repair the retaining walls, and replace the sod and ground cover plants that were ruined during these two events," Wagner said. "We don't want to take away from the student experience by discouraging these events in the future, but we have to make students aware that it costs money to clean up after them and ask for cooperation from event planners to make sure damage like this



doesn't happen in the future." Most troubling was damage to trees and plants that were ripped out of the ground and thrown into the lake, he said.

Wagner said that nearly two dozen Roads & Grounds staff members worked all day on November 19 to clean the mud from the walkways and remove debris from Mirror Lake so it would look better the next day for the football contest against the University of Michigan. "Our folks tried to power wash the walkways, but the mud was so thick that it was necessary to bring in snowplows to scrape it away," Wagner said.

"I really want to thank each and



every Roads & Grounds staff member who helped us clean up this mess," said **Kenneth Moncayo**, assistant vice president for Operations. "It just shows the importance of always being ready to respond to whatever situation we face on a daily basis. Quick response to situations like these demonstrates the value of the staff members in the Roads & Grounds division," he said. —D.S. •

Are You Ready for Cold Weather?

Winter weather means that we have to exercise care when working or simply being outside for an extended period of time. Hypothermia occurs when the body is no longer capable of maintaining its core temperature of 98.6° Fahrenheit. In fact, this process can occur even at moderate temperature ranges of 30°F to 50°F. Wind speed, moisture, and lower temperatures are all contributing culprits of cold stress-related issues. Individuals with existing medical conditions are also more susceptible to cold-related injuries or illnesses.

Signs and Symptoms

Early signs of cold stress involve uncontrolled shivering, fatigue and drowsiness, cool and bluish skin, pain in extremities, slurred speech, and poor coordination. Eventually, it can result in mental impairment and disorientation. Physical changes in the body start, i.e., the heart slows, blood vessels are constricted, etc. Severe stages involve unconsciousness and no detectable breathing.

Frostbite (the actual freezing of the skin) can occur generally to fingers, hands, toes, ears, and nose. Pale, waxy looking, and numb skin is a sign of frostbite.

First Aid Response

Seek medical attention as soon as possible. Move the person to a warm

dry area. Remove wet and tight clothing. Replace with warm and dry loose coverings. Keep the person awake. Provide warm and sweet drinks. Warm from the center of the body outward. Medical personnel should treat the extremities affected by frostbite. These areas need to be warmed gradually and should never be rubbed.

Protect Yourself

- Recognize the environmental and workplace conditions that lead to potential cold-induced illnesses and injuries.
- Learn the signs and symptoms of cold induced illnesses/injuries and what to do to help a coworker.
- Select the proper clothing for the anticipated weather and workplace conditions. Outerwear should prevent wind and water penetration.
- Layer clothing and ensure the hands and head are appropriately covered.
- Take frequent short breaks to warm up.
- Use the buddy system, never working alone.
- Drink warm and sweet beverages. Avoid caffeine and alcoholic drinks.
- Consult your physician, particularly if you have predisposed health conditions (such as cardiovascular disease, diabetes, hypertension), are taking medication, or are generally in poor physical condition. —G.I. •

Did you know? ... Sugar plums still exist, although not called that anymore. They are chocolate candies with fruit preserves, cream, or other sweet filling in middle.



Cheese Cakes

Submitted by
Bernice McCord,
Environmental Health & Safety

1 cup sugar
1 tsp vanilla
16 oz cream cheese
2 packages crescent rolls
1 stick unsalted butter
Additional cinnamon & sugar mixture

Mix sugar, vanilla, and cream cheese. Place one package crescent rolls in 9" x 13" pan. Spread cheese mixture over crescent rolls in pan. Place second package crescent rolls on top of cheese mixture. Melt butter and pour over. Sprinkle with additional cinnamon & sugar. Bake at 350°F for 30 minutes. Cool & serve.

Bernice McCord sent in this recipe for these yummy little treats. They disappear quickly! If you have a recipe you'd like to share, please forward it to newsletter_com_mittee@pf.ueo.ohio-state.edu.



Cranberry-Orange Relish

Submitted by Sharon Bierman,
Information Management

Wash 4 cups of fresh cranberries and an orange. Finely chop cranberries and orange (peel, seeds, & pulp included) in a food processor. Stir in 2 cups of sugar. Mix and refrigerate for at least 3 hours.

Sharon brought this dish to the recent office Thanksgiving food fest. If you have a recipe you'd like to share, please forward it to newsletter_com_mittee@pf.ueo.ohio-state.edu.



Coconut Candy

Submitted by
Debbie Speicher, Accounting

2 lb powdered sugar
1 stick unsalted butter
14 oz bag coconut
1/2 tsp vanilla
1 can Eagle Brand milk
12 oz semi-sweet chocolate chips
1/2 bar paraffin

Mix sugar, butter, and coconut with your hands and chill about a half hour. Roll into balls. Arrange onto a cookie sheet covered with waxed paper. Chill for 1 hour. In a double-boiler, melt chocolate chips and paraffin. Using a toothpick to skewer the balls, dip them into the chocolate mixture. Refrigerate.

Coconut lovers unite for this terrific treat! Thanks, Debbie. If you have a recipe you'd like to share, please forward it to newsletter_com_mittee@pf.ueo.ohio-state.edu.



Good Job!

I wanted to let you know how well Chrystal Cain, our custodian, is performing her job. A few weeks ago, our regular custodian left, and LaDonna Cottrell and Chrystal [North Region] picked up the extra work. After some shuffling, Chrystal is still doing the work of two people, cleaning two floors of the Math Tower. Her work is excellent, keeping our work place in better shape than our regular custodian ever did. Without fail and on time, Chrystal makes her rounds with a smile and good word. If you have a way to acknowledge the good work of your employees, I would definitely recommend Chrystal for that award.

Also, LaDonna is a peach! I've never seen her in anything but the best of moods, and it's always a pleasure to run into her during her rounds.



Ronda Bucy

Assistant to the Chair
Department of Mathematics

Day Tripping in Ohio

Christmas at Reeves Victorian Home

December - 2 p.m. to 8 p.m. daily except December 25 and 26
325 E. Iron Avenue - Dover
Adults \$6 - Seniors \$5 - Children \$2
All 17 rooms of this turn-of-century mansion are completely decorated for the Christmas season. All tours are guided, and entry is permitted into each room, all of which house the original family furnishings of the family of Jeremiah E. Reeves.



<http://doverhistory.org/>
(800) 815-2794 or (330) 343-7040

PNC Festival of Lights

December - Wednesdays & Sundays through December 14 ... then daily from December 15 except December 24 and 25 ... 5 p.m. to 9 p.m.
Cincinnati Zoo - 3400 Vine Street
FREE with regular Zoo admission of Adults \$11.50 - Seniors \$9 - Children \$6. Features 2.5 million twinkling lights and more than 50 light sculptures throughout the park.

<http://www.cincinnati-zoo.org/>
(800) 94-HIPPO or (513) 281-4700

Hocking Valley Santa Train

Until December 19
133 E. Canal St., Nelsonville
Adults \$14 - Seniors \$11 - Children \$9.
Santa Claus and his Elves will be riding through the Hocking Valley this Christmas on the Hocking Valley Scenic Railway. Ride along with them each Saturday and Sunday on the Christmas-decorated train cars.

<http://www.hvsnr.com/>
276-1301 or (800) 967-7834

Christmas by Candlelight Nightly, 6 p.m. to 10 p.m.

Marion County Fairgrounds, 220 E. Fairgrounds Street, Marion
\$5 per car - Drive through Christmas lights that adorn the many drives throughout the Marion County Fairgrounds. View scenes that tell the story of Christmas through many different points of view, including a live Nativity. The lights will warm your heart and leave you with a spirit that will last though the Christmas season.

(740) 382-2558 •

Where Are They Now? ...

James Hibbett

Jim Hibbett enjoyed a 25-year career with The Ohio State University that started in Physical Facilities in 1965 in the Mechanical Systems Shop. There were no Maintenance Repair Workers 1s or Assistant Air Quality Technicians at that time—he was simply classified as a laborer (filter helper). Jim worked his way up through the ranks and in 1978 became a Building Maintenance Superintendent for the Controls Crew, a position he held for 12 years until the early buyout of 1990. One third of his former 15 technicians went on to obtain supervisory positions, including four superintendents—a fact that Jim attributes to his excellent leadership skills, of course!

After retiring from Physical Facilities in October 1990, Jim spent two years at Columbus State Community College completing course work his first class FCC license and an associate's degree in Computer Programming Technologies. Jim made the Dean's List each quarter and graduated Magna Cum Laude.

Jim worked six months as a private controls contractor for Ohio State before joining the State Auto insurance group in 1994 as a programmer for the Y2K conversion. Jim is still with State Auto and has no plans on retiring any time soon.

Jim and his wife Sharon have taken up photography and kayaking and have gone on an exotic cruise each of the last eight years. The Hibbetts have a 30-year-old daughter and no grandchildren. Jim will turn 60 this coming February.



Jim Hibbett

Carl Burnette

Carl Burnette retired as an Air Quality Control Technician from The Ohio State University on December 31, 1998, after spending his entire career within the Maintenance Division of Physical Facilities.

He was honorably discharged from the U.S. Navy in 1959 and worked in the HVAC industry before joining the Mechanical Systems Shop in September 1970.

Rosie, Carl's wife of 42 years,



retired from Ohio State in 1999. They still reside in the same house that he built for her 25 years ago in Delaware County. They have a daughter employed at Wilce Student Services as a bookkeeper. The Burnettes have two granddaughters, ages 16 and 19.

Since Carl's retirement, he has worked as a maintenance man for an apartment complex and has started his own HVAC business on the side. Carl also served as a Porter Township Trustee for 18 months, overseeing roadways, fire department, board of health, and the county engineer's office with a annual budget in excess of \$1 million.

Carl will be 61 on December 3 and plans to permanently retire in the southern part of Mississippi sometime in the near future. —M.W. •

On the Move ...

New Employees



Pierre Johnson
Groundskeeper 1
Landscape Shop



Randy Strode
High Voltage
Electrician
High Voltage



Michael
Bridgewater
Groundskeeper 1
Landscape Shop



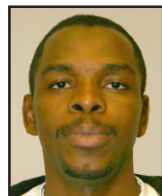
Casey Emerson
Electronic Tech 1
Building
Automation



Arthur Burford
Custodial Wrkr.
Business Region



David Miller
Custodial Wrkr.
South Region



Ibrahima Traore
Custodial Wrkr.
Business Region



Henok Tadesse
Custodial Wrkr.
South Region



Greg Greeno
Coordinator
Coord., Planning
& Renovation



Terry Quinlan
Asst. Mason
Campus Shop

Retirements



Carl Reedy
Equip. Operator 2
Campus Shop



Marvin Brydie,
Asst. Auto Mech,
Veh & Equip Maint



Marverline Madison
39+ years
Contract Region



Gertrude Sheppard
20+ years
North Region

Not pictured ...
Bob Yontz, Equip
Operator 1,
Landscape Shop