

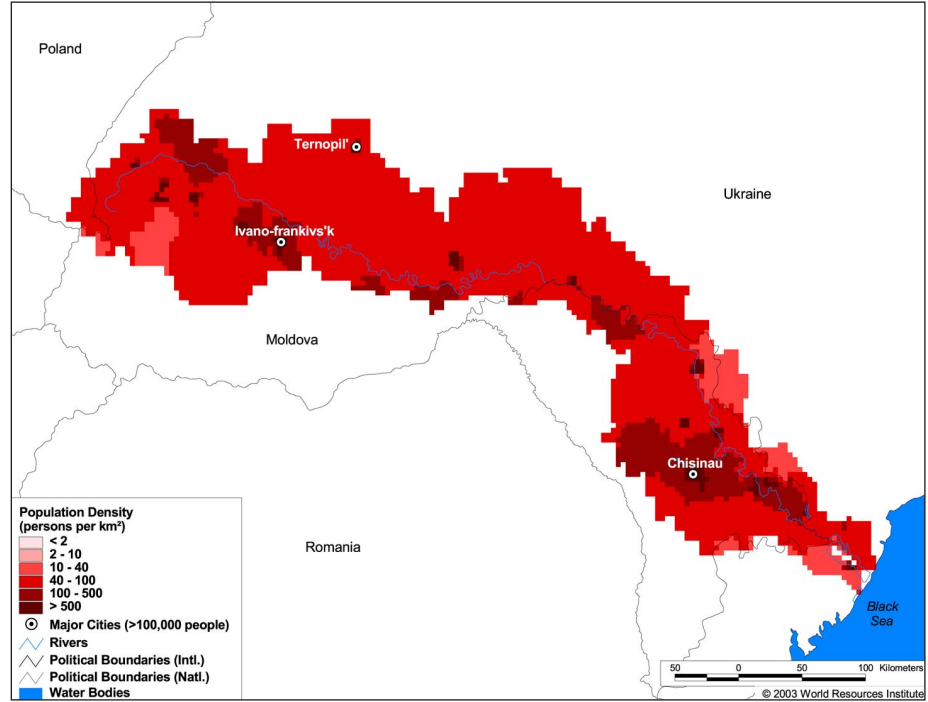
Land Cover and Use Variables

Percent Forest Cover:	5.2
Percent Grassland, Savanna and Shrubland:	1.9
Percent Wetlands:	1.1
Percent Cropland:	82.8
Percent Irrigated Cropland:	3.8
Percent Dryland Area:	47.5
Percent Urban and Industrial Area:	9.3
Percent Loss of Original Forest Cover:	85.0



Basin Indicators

Basin Area (sq. km):	68,627
Average Population Density (people per sq. km):	107
Number of Large Cities (>100,000 people):	3
Water Supply per Person (1995)(m ³ /year):	1,621
Degree of River Fragmentation:	-
Number of Dams (>15m high) in Basin:	3
Number of Dams (>150m high) in Basin:	0
Number of Dams (>60m high) under Construction:	0
Number of Dams (>15m high) on Main Stem of River:	3
Number of Dams (>150m high) on Main Stem of River:	0



Biodiversity Information and Indicators

Number of Fish Species:	57
Number of Fish Endemics:	0
Number of Amphibian Species:	19
Number of Ramsar Sites:	2
Number of Wetland-Dependent IBAs:	1
Number of Endemic Bird Areas:	0
Percent Protected Area:	1.4

