

Update on 2001 Census Release Sept 03

Home

The first results from the 2001 Census were issued in September 2002. Since then, summary figures for all Census topics from national to local authority level, and the National Report and summary results for local areas have also been released. Further data will be available as follows:

Available now

First results on population	www.statistics.gov.uk/census2001/pop2001/Northumberland.asp
National Report	www.statistics.gov.uk/statbase/explorer.asp?CTG=3
Key Statistics for Local Authorities (data available as both counts and percentages)	see below for web link
Key Statistics for Wards, Output areas and Health Authorities (data available as both counts and percentages)	www.neighbourhood.statistics.gov.uk
Standard Tables for Regions, LA's	contact MJamieson@northumberland.gov.uk

Still to come

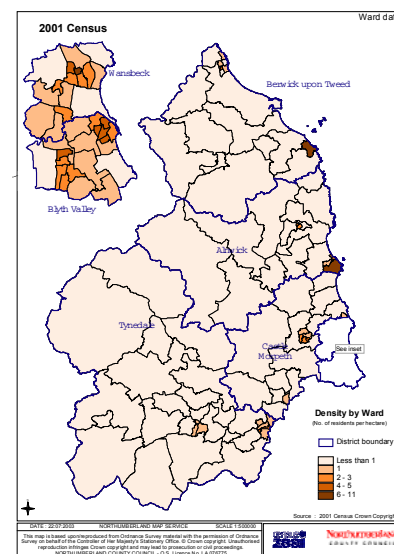
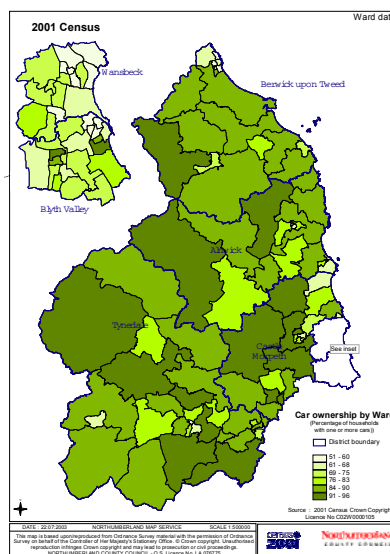
Census Area Statistics	Output areas and above	Sept onwards
National Supplementary report (including migration and travel)	National	Sept/Oct 03
Standard tables	Wards and Health Authorities	Sept 03
Key Statistics	Parliamentary constituencies,	Sept 03
	Postcode Sectors	Sept/Oct 03
	Parishes	Oct 03
	Urban Areas	Nov 03

For further information on the census output, please refer to the Output Prospectus, which can be found at [National Statistics Online - Census 2001 - Output Prospectus](http://www.statistics.gov.uk/census2001/outputprospectus)

For information on the ONS website, see <http://www.statistics.gov.uk/> or follow the links below to access Key Statistics tables for Local Authorities.

Data reports now available

Tables (in Excel format) are now available showing relevant data for Northumberland, its districts and wards, by following the links below. Paper copies can also be provided. Data is also available in a digital format showing county and district information on a map base as shown.



NORTHUMBERLAND Information

Statistical Reports available

Subject	Geographical area included		Table ref	Data type
	smallest	largest		
Age Groups	Ward	District	KS02	Number
Ethnicity	Ward	District	KS06	Number
Tenure	Ward	District	KS18	Number
Car Ownership	Ward	District	KS17	Number
Alnwick District information	Ward	County	Various	Number
Berwick District information	Ward	County	Various	Number
Blyth Valley District information	Ward	County	Various	Number
Castle Morpeth District information	Ward	County	Various	Number
Tynedale District information	Ward	County	Various	Number
Wansbeck District information	Ward	County	Various	Number
General data	All Districts	England and Wales	Various	%

Reports based on data for output areas and Northumberland National Park are also available. For copies of these or any other queries you may have, please contact MJamieson@Northumberland.gov.uk

Useful Facts and figures

	Northumberland	Alnwick	Berwick	Blyth Valley	Castle Morpeth	Tynedale	Wansbeck	N/land National Park
Area (ha)	501,307	107,961	97,181	7,036	61,823	220,639	6,676	103,081
Population 2001	307,190	31,029	25,949	81,265	49,001	58,808	61,138	1,929
Population 1991	304,557	30,061	26,731	79,483	50,257	57,281	60,724	1,936
Ethnicity (% pop)	0.985	0.422	0.390	0.978	1.941	0.691	1.062	0.0
All people aged 16 - 74	224,679	22630	18859	59719	36052	42624	44795	1490
All people aged 16 – 74 economically active	145205	14725	12171	39351	22250	28856	27852	1103
Number of households	130,780	13,535	11,653	34,512	20,032	24,585	26,463	799
No of households with all pensioners	13,258	1585	1380	2782	2553	2606	2352	74
No of single person households	37831	4022	3752	10010	5289	6692	8066	178
No of lone parent households with dependant children	7401	609	533	2472	912	1222	1653	22
Households with no cars	33,703	2,920	3,048	10,178	3,728	4,731	9,098	42
Total cars / vans	142,329	15,657	12,026	33,994	26,091	30,948	23,685	1,267
Households owner occupied	87,714	8,447	6,705	23,061	15,136	17,143	17,221	431
Households rented	43,066	5088	4947	11,451	4,896	7,442	9,242	369
Average household size	2.31	2.26	2.19	2.33	2.35	2.35	2.29	2.41

Key Statistics Tables

Population
KS01 Usual resident population: Census 2001, Key Statistics for local Authorities
KS02 Age structure: Census 2001, Key Statistics for local Authorities
KS03 Living arrangements: Census 2001, Key Statistics for local Authorities
KS04 Marital status: Census 2001, Key Statistics for local Authorities
KS05 Country of birth: Census 2001, Key Statistics for local Authorities
KS06 Ethnic group: Census 2001, Key Statistics for local Authorities
KS07 Religion: Census 2001, Key Statistics for local Authorities
KS08 Health and provision of unpaid care: Census 2001, Key Statistics for local Authorities
Economic activity
KS09a Economic activity - all people: Census 2001, Key Statistics for local Authorities
KS09b Economic activity - males: Census 2001, Key Statistics for local Authorities
KS09c Economic activity - females: Census 2001, Key Statistics for local Authorities
KS10 Hours worked: Census 2001, Key Statistics for local Authorities
KS11a Industry of employment - all people: Census 2001, Key Statistics for local Authorities
KS11b Industry of employment - males: Census 2001, Key Statistics for local Authorities
KS11c Industry of employment - females: Census 2001, Key Statistics for local Authorities
KS12a Occupation groups - all people: Census 2001, Key Statistics for local Authorities
KS12b Occupation groups - males: Census 2001, Key Statistics for local Authorities
KS12c Occupation groups - females: Census 2001, Key Statistics for local Authorities
Socio-Economic
KS13 Qualifications and students: Census 2001, Key Statistics for local Authorities
KS14a NS-SeC (National Statistics Socio-economic classification) - all people: Census 2001, Key Statistics for local Authorities
KS14b NS-SeC (National Statistics Socio-economic classification) - males: Census 2001, Key Statistics for local Authorities
KS14c NS-SeC (National Statistics Socio-economic classification) - females: Census 2001, Key Statistics for local Authorities
Travel to work and car ownership
KS15 Travel to Work: Census 2001, Key Statistics for local Authorities
KS17 Cars or vans: Census 2001, Key Statistics for local Authorities
Households
KS16 Household spaces and accommodation type: Census 2001, Key Statistics for local Authorities
KS18 Tenure: Census 2001, Key Statistics for local Authorities
KS19 Rooms, amenities, central heating and lowest floor level: Census 2001, Key Statistics for local Authorities
KS20 Household composition: Census 2001, Key Statistics for local Authorities
KS21 Households with LLTI and dependent children: Census 2001, Key Statistics for local Authorities
KS22 Lone parent households with dependent children: Census 2001, Key Statistics for local Authorities
Other
KS23 Communal establishment residents: Census 2001, Key Statistics for local Authorities
KS24 Migration: Census 2001, Key Statistics for local Authorities

Information updated Sept 2003