

## New products in grey literature

# arXiv.org: the Los Alamos National Laboratory e-print server

*Gerry McKiernan*

### The author

Gerry McKiernan (gerrymck@iastate.edu) is Science and Technology Librarian and Bibliographer, Iowa State University Library, Ames, Iowa, USA.

### Keywords

Research, Journal publishing, Written communications, Electronic publishing, Grey literature, Science

### Abstract

Since its creation nearly ten years ago, the Los Alamos National Laboratory (LANL) e-print service (arXiv.org) has revolutionized scholarly communication within many scientific communities. It has also inspired the development of alternatives to conventional and electronic journal publication in a variety of other disciplines. The LANL e-print database is also serving as the core collection for two major investigations that seek to enhance access and navigation within and between electronic archives and special collections.

### Electronic access

The current issue and full text archive of this journal is available at

<http://www.emerald-library.com>

... [A] preprint is a clumsy, bulky, semi-legible document, being a duplicated version of a paper submitted for publication but not yet accepted and printed. It is a mechanised version of the decent and proper custom of writing to one's friends, colleagues and rivals about one's current work ... (Ziman, 1968, p. 110).

### Preprints

While many would not agree with the tone of this characterization of the preprint, this quotation does embody key aspects of the general nature of this method of communication among researchers in selected fields of science. A preprint is indeed often a version of a paper intended for submission and publication in a peer-reviewed journal and not a final version (Kramer, 1985, p. 3). And historically, the distribution of preprints has been an informal method by which some researchers have kept abreast of the professional activities of their colleagues (Hurd, 1996, p. 68). The Office of Scientific and Technical Information (OSTI) of the US Department of Energy (DOE) defines preprints as "manuscripts that have not yet been published, but may have been reviewed and accepted; submitted for publication; or intended for publication and being circulated for comment" (US Department of Energy, Office of Scientific and Technical Information, undated). While there are a wide variety of interpretations of the nature of the preprint (Kramer, 1985, pp. 3-4), it is perhaps described best by Kramer as "a record of research distributed among scientists prior to formal publication" (Kramer, 1985, p. 4; see also Hurd, 1996, p. 68).

For scientists involved within areas of research that are highly competitive and which depend upon the very latest data for progress, the preprint is highly important. In the high energy physics community, for example, exchange of preprints has long been a key element in informal communications and an

Any opinions, findings, and conclusions or recommendations expressed in this archive are those of the author and do not necessarily reflect the views of the US National Science Foundation, the US Department of Energy, or the Los Alamos National Laboratory.

established part of the discipline's culture (Hurd, 1996, p. 68). A variety of studies (see Kramer, 1985, pp. 14-22) have documented preprints as a predominant source of information and medium of communication. As clearly summarized by Kramer:

[T]he role of the preprint in the informal information exchange among scientists is a major one. It may well be the most vital link that the scientist has on a world-wide basis to keep up-to-date on current progress in any field (Kramer, 1985, p. 38).

As a primary means of communicating new research ideas and results, preprints were traditionally sent to interested individuals and institutions by ordinary mail, using an established exchange system at the time they were submitted to journals for consideration (Ginsparg, 1994, p. 390). With a pre-existing "preprint culture" in such fields as physics and astronomy, and a formal distribution infrastructure, it is not surprising that these scientific communities would be highly receptive to sharing information using computer-based networks (Luzi, 1998, p. 131; Ginsparg, 1994, p. 390). Other major factors that affected the acceptance of an electronic alternative to conventional distribution by such communities include their early adoption of electronic communication (i.e. e-mail) (Ginsparg, 1994, pp. 390-1), their "more communication-intensive form of communication" (Luzi, 1998, p. 133), and the exponential increase in connectivity of computers that occurred by the end of the 1980s (Ginsparg, 1994, p. 391).

## E-prints

Electronic mail was the first formal method by which preprints were distributed electronically (Taubes, 1993, p. 1246). However, the limitations of this method of distribution led Paul Ginsparg, a particle physicist at the Los Alamos National Laboratory, New Mexico, in 1991, to conceive of a more efficient system in which all electronic preprints could be stored and be accessible from a central location (Taubes, 1993, p. 1246). Ginsparg wrote supporting software to automate the process that would enable authors to submit and

replace preprints on a central server, to search, and retrieve the full text of these documents, and to receive online assistance in using his system. He incorporated a current awareness function that allowed users to subscribe and receive listings of titles and abstracts of new contributions to this centralized database. Ginsparg intended that minimal computer literacy would be required to interact with his system and initially designed it around an e-mail interface. While the system was intended only to organize a haphazard and unequal distribution of electronic preprints, it quickly became a primary means of communicating ongoing research information within select scientific communities. As observed by Ginsparg, the technological advances of the Internet and the lack of initiative on the part of conventional journals in response to the electronic revolution rendered the development of his e-print archive "an accident waiting to happen" (Ginsparg, 1994, pp. 390-3).

## Collections

The arXiv.org e-print archive consists of four major collections:

- (1) "Physics".
- (2) "Mathematics".
- (3) "Nonlinear sciences".
- (4) "Computer science".

Within each of the first three collections there are several additional major sub-collections, each with an appropriate identifying label. For example, the physics collection includes such sub-collections as "Astrophysics" (astro-ph), "General relativity and quantum cosmology" (gr-qc), "Nuclear theory" (nucl-th), and "Quantum physics" (quant-ph) (see Figure 1).

Selected sub-collections also include appropriate subclasses ("Subject classes"). For example, the "Condensed matter" sub-collection not only offers an index to all e-prints categorized with this sub-collection, but provides an ability to search or retrieve records assigned to one or more "Subject classes", e.g. "Disordered systems and neural networks", "Soft condensed matter", or "Superconductivity" (see Figure 2).

Figure 1 Homepage of arXiv.org e-print archive

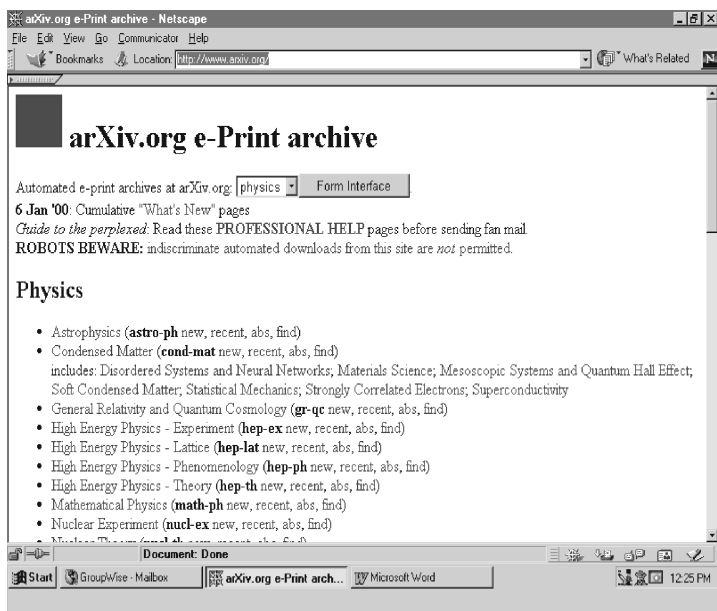
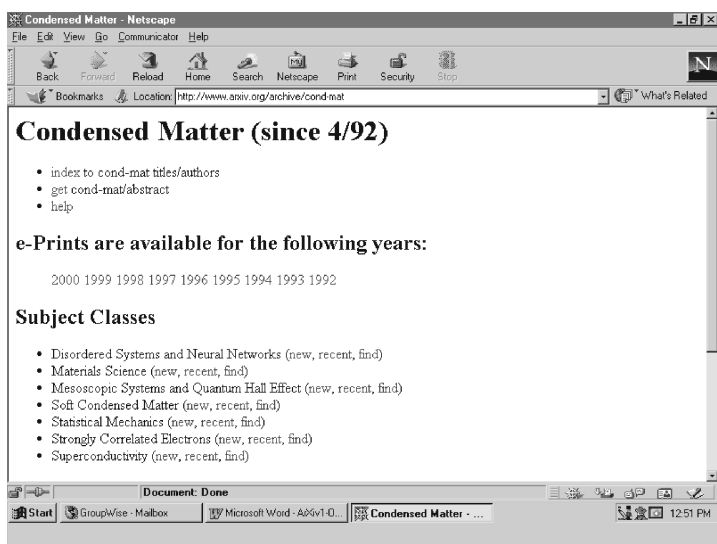


Figure 2 Listing of "Subject classes" in "Condensed matter" sub-collection



## Access options

In accessing the arXiv.org e-print archive, the user is provided with a variety of viewing and searching options. For a given sub-collection, the user may display records for all newly submitted contributions to the archive ("new") with their associated citation and abstracts, or only the associated citations for recent submissions ("recent"). For either display, the standard citation includes the title of the

e-print, the author(s), a "Comments" field which typically provides the pagination and presentation history (e.g. a note on the date and place of a conference presentation), document format (e.g. LaTeX), submission or acceptance information and, in some cases, a local Internet address for the submission or its associated appendices, and a journal reference citation ("Journal-ref") to an e-print that has been formally published. "New" records are those added on the current weekday; no submissions are processed on the weekend. "Recent" submissions are those processed and accepted within the most recent five weekdays. For "new" submissions, records are displayed in numerical order by the standard alphanumeric identifier assigned to a submission (e.g. "astro-ph/0003412", "astro-ph/0003413", "astro-ph/0003414", etc.); for "recent" submissions, records are displayed in reverse order by the standard alphanumeric identifier (e.g. "astro-ph/0003427", "astro-ph/0003426", "astro-ph/0003425", etc.). In general, the alphanumeric identifier consists of the code for a specific sub-collection (e.g. "astro-ph" for the "Astrophysics" sub-collection), followed by a slash ("/"), and a seven-digit number (e.g. 0003425). The first two digits of the number are the last two digits of the year in which a submission has been processed (e.g. "00" for "2000"); the next two digits represent the month in which the submission was processed ("03" for March, the third month); and the remaining digits represent an arbitrary accession number assigned to a particular e-print submission for a specific sub-collection. Where there is a subject class, its abbreviation or code is placed after the name of code of the sub-collection and before the slash and paper number (e.g. "math.AT/9910001" or "physics.acc-ph/9911027"). For a given sub-collection, the user may also choose to search and view the record with its abstract ("abs") for a specific e-print.

## "Find" option

The most versatile search options are made available within the "Find" option of the archive's standard interface. For example, in choosing this function for the "astro-ph" sub-collection, the user is presented with checkboxes for all sub-collections with which the

“astro-ph” sub-collection has been categorized (e.g. “cond-mat”, “gr-qc”, “hep-ex”, etc., within the “Physics” collection) and all the years available for searching for the particular collection (e.g. “Past year”, “All years”, “2000”, etc.). In this display, only the standard identifier (e.g. “astro-ph”) for a sub-collection is provided, not the formal name of the sub-collection (e.g. “Astrophysics”) (see Figure 3). At this point the user has the option of accepting or modifying the default selections by checking more than one sub-collection or more than one year. The user also has the option of searching all sub-collections (“Search all”) within a collection (e.g. “Physics”) and all available years (“All years”). From within the default or chosen parameters, the user has the option of searching within one or more key record fields: “Author(s)”, “Title”, “Abstract”, “Full record”, “Comments”, “Journal-ref”, “Subject-class”, or “Report-no.” (see Figure 3). These are either selected by the user from drop-down menus within a search form, or in the case of authors, titles, or abstracts accepted from the available default options (“Author(s)”, “Title”, or “Abstract”). Default or optional fields may be searched separately or in combination with other default or optional fields.

Except for the alphanumeric identifier, the contributor provides all key field data for a submission. This includes:

- the author(s) and title of the work;
- comments which indicate the contribution’s pagination and figures, if any;
- anonymous FTP and Web addresses;
- notes on submission for formal publication in a print or electronic professional publication;
- the specific locally-assigned report number;
- the subject class or classes which best represent the general topic of the contribution;
- the full bibliographic citation if the contribution has been formally published in a journal or proceedings; and
- an abstract.

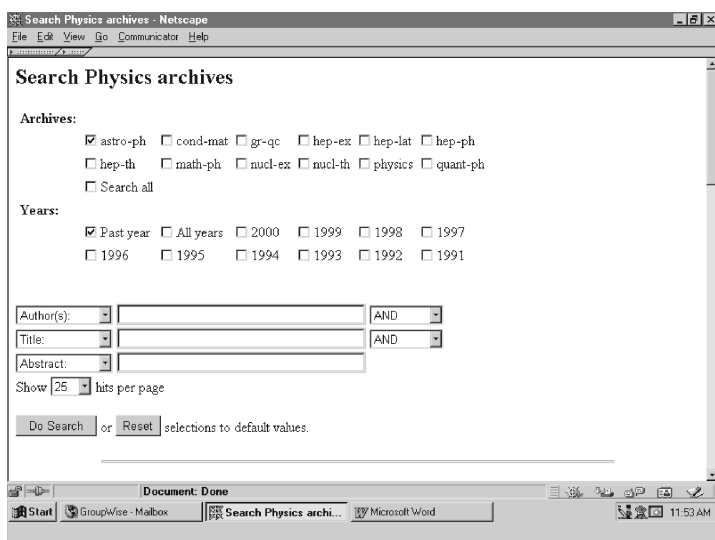
For a contribution to the mathematics or computer collections, contributors are requested to provide the appropriate classification code(s) that best represent its primary and secondary subject coverage using respectively, the mathematics subject classification (MSC) of the American Mathematics Society (AMS) or the Association for Computing Machinery (ACM) computing classification system.

Within most fields users may use Boolean operators (i.e. “And”, “Or”, “Not”) in simple or nested statements, or search for exact phrases by enclosing these in double quotes. Most fields provide automatic stem searching and general truncation is available through the use of an asterisk (“\*”), the standard special character used for truncation in many index and abstract databases.

### Author searching

Records categorized within a specific sub-collection may also be searched by an author using the valid form of the author’s name. This search option will retrieve records that match the form of the name entered. If only a surname is entered (e.g. “Rückl”), all records within the selected sub-collections which contain a valid form of the surname (e.g. “Rückl” or “Ruckl”) will be retrieved. In addition, forms of the name that contain typographical or processing errors (e.g. “R\luck”) will also be retrieved. If a full first name and surname are searched (e.g. “Reinhold Rückl”), only those records containing the full first name and valid variants of the surname will be retrieved (i.e. “Reinhold

**Figure 3** Options available in a “Find” search in the standard interface for the Astrophysics (“astro-ph”) sub-collection



Rückl”); records containing typographical or processing errors of the surname (e.g. “R\u0026#x201c;uck”) will not be retrieved. If a first initial and surname are entered (e.g. “R R\u0026#x201c;ckl”), only records containing valid variant forms of the surname and either the first initial or valid variant forms of the author’s full first name will be retrieved (e.g. “R R\u0026#x201c;ckl” or “Reinhold R\u0026#x201c;ckl” will be retrieved but not “Reinhold R\u0026#x201c;uck”). Spelling variants of a name may be searched by preceding the name with the word “SOUNDEX” (e.g. “SOUNDEX Ruckl”). A SOUNDEX search will retrieve obvious alternatives (e.g. “Ruckl” will match “Ruckl”, “Rueckl”, or “R\u0026#x201c;ckl”) as well as similar variants. Users should be aware, however, that a SOUNDEX search can retrieve a wide array of name variants, many of which will not be true alternative forms of a name.

Author names may also be searched from within “new” or “recent” records by clicking the hypertext link of the name. As with the standard author name search, this search will retrieve only records within the specified pre-selected sub-collection. Although “new” or “recent” records may contain forms of the name with the first initial and surname of an author (e.g. “R R\u0026#x201c;ckl”) or the full first name and surname (e.g. “Reinhold R\u0026#x201c;ckl”), a hypertext search from within the record using either form of the name will automatically search the sub-collection using the first initial and surname of the author (e.g. “R R\u0026#x201c;ckl”). Users should be aware, however, that a hypertext author search will only retrieve records with hypertext links. Names containing typographical or processing errors (e.g. “Reinhold R\u0026#x201c;uck”) will not be retrieved. For comprehensive results in general, users are advised to perform an author search using the standard interface.

Other collections within the arXiv.org e-print archive (i.e. “Mathematics”, “Nonlinear sciences”, and “Computer science”) may be viewed or searched by selecting a particular collection from the drop-down menu found in the middle of the “Find” interface page (“Other subject areas to search”). Selection of any of these collections will present the user with a “Find” standard interface page identical to that of the “Physics” “Find” standard interface.

## Form interface

In addition to viewing and searching records in the arXiv.org e-print archive using the standard options presented on the site’s homepage, a user may choose to search one of its collections using a “Form interface” (see Figure 4). From the top of the homepage, users may choose to search within the default collection “physics”, or using a drop-down, select one of the three other collections:

- (1) mathematics (“math”);
- (2) nonlinear sciences (“nlin”); and
- (3) computer science (“cs”).

In selecting this interface for the default collection (i.e. “Physics”), users are presented with options that correspond to those provided from the “Find” option in the standard interface (see Figures 3 and 4). To view or search a specific sub-collection within this collection, the user may accept the default sub-collection (i.e. “hep-th”), or using a drop-down menu in the “Archive” field, choose from the alphabetized listing of codes associated with sub-collections categorized in this collection (e.g. “astro-ph”, “cond-mat”, “gr-qc”, etc.).

To display newly-added records to the sub-collection, the user simply accepts the default setting (“new abstracts”) in the first numbered field (i.e. “1”) (see Figure 4). A click on the view button (“View”) will list all records added to the sub-collection as of that day and time, with their abstracts, in e-print record numerical

Figure 4 “Form interface” view and search options for “Physics” collection

order. To display recently-added records, the user clicks on the drop-down menu in the first numbered field and selects the appropriate entry (“recent”) and then clicks on the view button. This action will display all records added to the sub-collection within the most recent five weekdays in reverse order by the assigned alphanumeric identifier.

Unlike the standard interface, the “Form interface” also provides the option of listing all records added to a sub-collection for a given month and year. The month and year are selected from drop-down menus in the second numbered field (i.e. “2”) (see Figure 4). Records added for an entire given year can be retrieved by choosing the year option (“yr”) found as the last entry in the drop-down menu for month. Each record retrieved by selecting the “Listings” button for this option will contain basic bibliographic information for each e-print: the assigned alphanumeric identifier (e.g. “astro-ph/0003426”), title, author(s), as well as “Comments”.

As in the standard interface, the form interface also allows the user to search and display the abstract with basic bibliographic and other information and features for a specific e-print record by entering an appropriate alphanumeric identifier (e.g. “astro-ph/0003426”) in the third numbered option (i.e. “3. Number”) (see Figure 4). In the fourth numbered option (i.e. “4”), the user has the option of searching the key record fields for the default year (“past year”) or any other year or years (i.e. “all years”) listed in the associated pull-down menu. However, the sequence of these key record fields (i.e. “Full record”, “Title”, “Author(s)”, etc.) is different from that of the standard interface (“Author(s)”, “Title”, “Abstract”, etc.). If the “Find” button is clicked without an entry, the user is presented with the identical interface as when the “Find” button is selected as a search option for a specific sub-collection accessible from the standard interface (see Figure 3). Here, as in the standard interface, the user has the option of accepting or changing the default sub-collection(s) or time period.

For the “Physics” collection in the form interface, users are presented with the option of searching subject classes for the “Condensed matter” sub-collection (“cond-mat subject

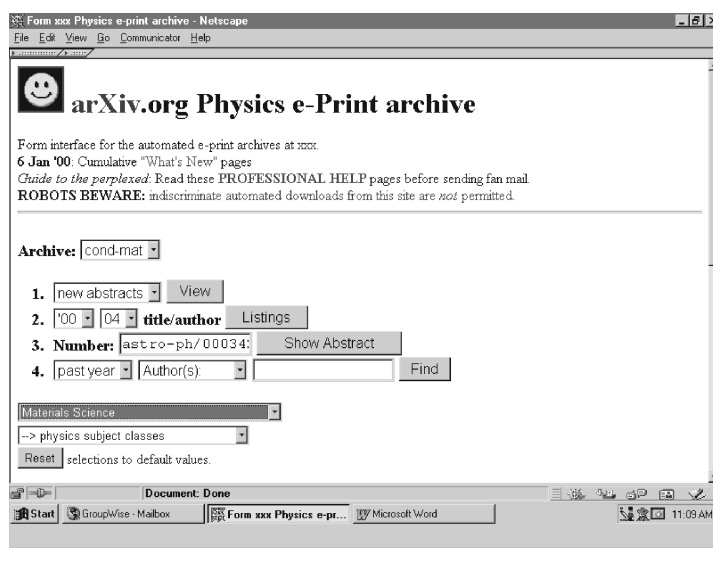
classes”) (see Figure 4) or the “Physics” sub-collection (“physics subject classes”). To search a specific subject class, the user must first select either of these sub-collections (e.g. “cond-mat”) from the drop-down menu within the “Archive” field of the “Physics” e-print archive (see Figure 5). The user then selects a particular subject class from within one of two separate drop-down menus (“cond-mat subject classes” or “physics subject classes”) found beneath the numbered list of view and search options (e.g. “Materials science”) (see Figure 4).

Records for other collections within the arXiv.org e-print archive (i.e. “math”, “nlin”, and “cs”) may be viewed or searched by selecting a particular collection from the last drop-down menu found beneath the center of the “Physics” collection form interface (i.e. “Other groups”). Selection of any of these collections will present the user with a form interface page nearly identical to that of the “Physics” form interface page. Unlike the “Physics” page interface, however, the form interface page of each of these collections allows the user to specify any of their associated subject classes from the first drop-down menu (see Figure 6) on the form.

### E-mail interface

For users who lack a reliable Internet connection, the arXiv.org e-print service also

**Figure 5** A screen print showing the selection of the “cond-mat” sub-collection and the “Materials science” subject class for a search within the “Physics” collection





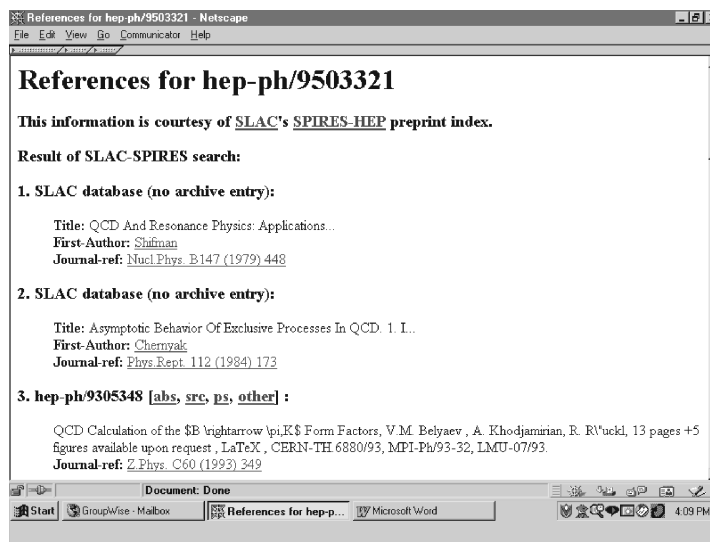
users are cautioned not to use this option, as it requires particular software and knowledge to manage. The third option (“ps”) allows the submission to be retrieved as a compressed PostScript (“ps”) file. The fourth option (“Other”) links the user to a page that presents options for converting the submission to one of several other display formats, including PostScript using bitmapped fonts, PostScript using Type I fonts, and most notably the portable document format (PDF). Users who access the archiv.org service using cookie-compatible browsers can select a default, preferred format for full-text display <<http://xxx.lanl.gov/cookies>>.

### Linking

Full records for contributions will include a link to cited references (i.e. “refers to”) and to selected citing sources (i.e. “cited by”) (see Figure 8). In clicking on the cited reference option, a numbered list of a contribution’s citations will be displayed. A typical citation will include the full or truncated title of the contribution, the last name of the first author, and the journal reference (“Journal-ref”) in abbreviated format (e.g. “Nucl.Phys. B147 (1979) 448”), if the contribution was formally published in a journal or proceedings. In cases where the cited work is an e-print that is available within the high-energy physics sub-collection of the arXiv.org “Physics” collection, the associated alphanumeric identifier for the e-print will be included adjacent to the citation number (e.g. “3. hep-ph/9305348”). Adjacent to this identifier will be the various display and retrieval options (i.e. “abs”, “src”, “ps”, “other”) for the entry. Where is no retrievable contribution within the arXiv.org service, the numbered citation notes that no e-print is available (i.e. “SLAC database (no archive entry:”) (see Figure 9).

The availability of a contribution within the arXiv.org e-print service is determined by an automatic search of the SPIRES-HEP database <<http://www-spires.slac.stanford.edu/find/hep>> maintained at the Stanford Linear Accelerator Center (SLAC) in California. The database consists of more than 415,000 entries derived from journal articles, preprints, e-prints, technical reports, conferences, and theses, received since 1974 by the libraries of SLAC

Figure 9 List of references for an e-print contribution



and DESY, the Deutsches Elektronen-Synchrotron in Germany. While not complete, the database is derived from a significant number of sources; as of 1998 the SLAC citation index was compiled from nearly 14,000 preprints and e-prints. In addition to the ability to display the cited references of a contribution and to link to a cited e-print, where available, the full record offers an option to retrieve e-prints that cite a previously-published e-print in the high energy physics sub-collection (“cited by”). A display of the citing source will include its alphanumeric identifier, basic bibliographic information (i.e. “Title”, “Author(s)”, “Comments”, “Journal-ref”, where appropriate, and “SLAC-comments”) and retrieval options (“abs”, “src”, “ps”, and “other”).

Users should use and interpret such results with caution. Presently, sources for the citation index in the SLAC HEP database are only the preprints and e-prints received by the SLAC library and do not include journal articles that do not have a corresponding preprint or e-print. To facilitate such retrieval, contributors to the arXiv.org database are strongly encouraged to include the e-print identifier for both published and unpublished articles or papers and to cite these using the correct format for the e-print (e.g. archive/papernum). If the e-print is not correctly identified and formatted it can not be automatically linked to citing e-prints.



## Submission

To facilitate submissions of contributions to the arXiv.org e-print service, explicit and detailed instructions are provided. Web upload is considered to be the easiest and most efficient method for submission and should be used unless the contributor has a poor network connection or other technological difficulty. In these cases, a submission can be sent using the file transfer protocol (FTP) to a designated incoming directory <ftp://arXiv.org/incoming/> or by e-mail. Submissions must in one of several specific formats (i.e. TeX, LaTeX, AMSTeX, AMSLaTeX, HTML+PNG/GIF, PDF, or PostScript). The preferred formats are TeX or LaTeX or HTML+PNG/GIF as these are open formats and are considered to be highly portable and stable over time. Figures for a contribution can be submitted in a number of common formats including PostScript (for line drawings, plots, etc.), JPEG (for photographic images), portable network graphics (PNG) (for non-photographic images), and GIF. The information page for submissions includes links to specific directions for formatting a record for submission to the arXiv.org service, with examples, and a template form to assist in its preparation. In addition, specific information is provided on e-mail submissions and considerations for submitting contributions in one of the preferred formats. Detailed information is also included for submitting oversized contributions, for replacing or withdrawing a contribution, for adding a journal citation (“Journal-ref”) for the associated published article or conference paper, and for cross-listing a contribution within another appropriate sub-collection of the arXiv.org service.

## Assistance

Through a detailed “Help” page <http://xxx.lanl.gov/help> and index <http://xxx.lanl.gov/help/helpindex>, the arXiv.org e-print archives provides excellent guidance for users in searching, viewing, and displaying contributions and making submissions. Among the most notable are descriptions of tools for browsing and submitting and other utility

programs, with hotlinks to their associated software sources <http://xxx.lanl.gov/help/utilities>. In addition to the “Help” index, there is an “arXiv FAQ” that provides assistance, by organizing frequently-asked questions (FAQ) into broad categories (e.g. “Information about downloading and viewing files”, “Information for submitters”, “Mailers and browsers”, etc.).

## Benefits

Currently, arXiv.org contains more than 130,000 documents and more than 30,000 contributions are anticipated in the year 2000. It is mirrored at 16 sites worldwide and on average the Los Alamos site alone is accessed approximately 80,000 times each week. In addition to serving the needs of its constituencies, the Los Alamos e-print service has also served as:

... a model of rapid, direct and relatively cheap interaction in which researchers participate as producers, distributors and users of information (Luzi, 1998, p. 30).

According to Ginsparg (1994, p. 390):

This system provides a paradigm for ... changes in worldwide, discipline-wide scientific information exchange and [serves as] a model for electronic transmission of research and other information ...

More importantly, while bibliographic databases provided bibliographic control of paper-based preprints, the advent of electronic preprints provides full-text access to papers, not just their bibliographic citations (Youngen, 1998, p. 449). In addition to offering speedier access of information to a wider community than paper-based preprint distribution, the Los Alamos National Laboratory e-print server offers desktop access to extensive collections for scientists who lack well-stocked libraries or personal subscriptions to journals (Hurd, 1996, p. 71), notably those in developing countries. Indeed, while the e-print server was not planned as an alternative to scientific periodicals, it has come to serve as an electronic journal for many users (Hurd, 1996, p. 71). The success of the LANL e-print service has inspired others to establish their own e-print services (Luzi, 1998, p. 133; Ginsparg, 1994, p. 396). Among the more significant efforts was the E-biomed project proposed by the

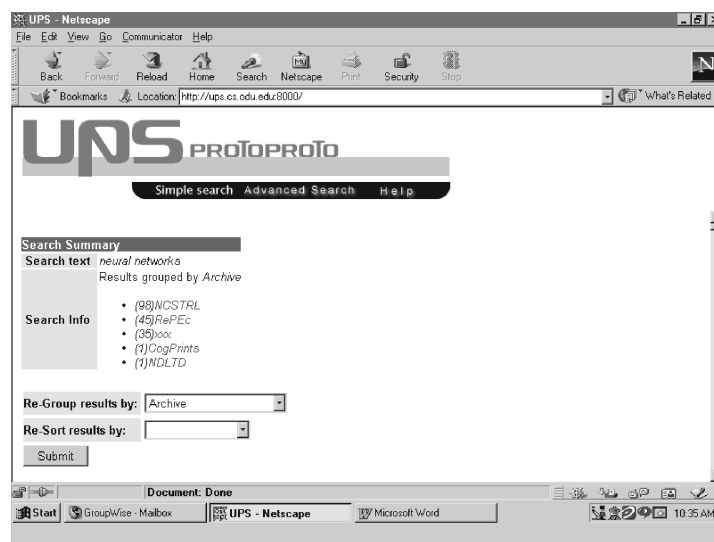
former director of the National Institutes of Health (NIH) (Varmus, 1999) and its successor, PubMed Central <<http://www.pubmedcentral.nih.gov/>>, to provide access to primary reports in the life sciences (PubMed Central, undated). It is also important to note that electronic research archives have also served as a mechanism useful for new and emerging interdisciplinary areas of research where there are no pre-existing journals and for which information is consequently difficult to obtain (Ginsparg, 1994, p. 394).

### Recent developments

Harnad (undated) has observed that the ideal online resource for scholars and scientists would be for all papers in all fields to be systematically interconnected, providing effortless access and navigation from any researcher's desktop worldwide. To demonstrate the feasibility of such an ideal, the Los Alamos National Laboratory in partnership with Cornell University and Southampton University (UK) are participating in the Open Citation Project (OpCit) <<http://opcit.eprints.org/>>. The objective of OpCit is to design the interface, infrastructure, and navigational software so that all e-prints are retrievable in a citation-linked format. Such a system would allow a user to navigate a collection of e-prints using citation-links to retrieve the full-text of any relevant paper or to further explore relevant links (Harnad, undated). The project will examine technology for establishing citation linkages to the selected scholarly archives beginning with the arXiv.org e-print collection (Open Citation Project, 2000)

The arXiv.org e-print collection is also one of several major e-print archives incorporated within the Universal Preprint Service (UPS) prototype <<http://ups.cs.odu.edu/>>, a proof-of-concept multidisciplinary digital library of publicly available scholarly materials (Van de Sompel *et al.*, 2000). The aim of this prototype (see Figure 10) is to demonstrate an end-user service that covers a variety of e-print and reports services and to serve as a model of a cross-archive search service. The "UPS

**Figure 10** Screen shot of postings of search results from the Universal Preprint Service (UPS) prototype



protoproto" contains records from six major electronic archives:

- (1) arXiv.org;
- (2) *Cognitive Sciences Eprint Archive* (CogPrints);
- (3) *Digital Library for the National Advisory Committee for Aeronautics* (NACA);
- (4) *Networked Computer Science Technical Reference Library* (NCSTRL);
- (5) *Networked Digital Library of Theses and Dissertations* (NDLTD); and
- (6) *Research Papers in Economics* (RePEc).

The current collection is static and consists of approximately 190,000 selected records harvested in July 1999, with arXiv.org having the largest number of records represented (85,000) and the most diverse in terms of contributing authors and institutions. The UPS prototype is a component of a much larger effort known as the "Open archives initiative" (OAI) <<http://www.openarchives.org/>>, a forum to "discuss and solve matters of interoperability between author self-archiving solutions [e.g. e-print services]" in order to "promote their global acceptance" (Van de Sompel and Lagoze, 2000).

### Conclusion

While many have embraced and adopted e-print services as primary information sources

and others recognize how they may be enhanced by citation linking and unified access, most would be surprised to learn that Kramer anticipated their development and benefit 15 years ago in her seminal study on the role of preprints in scientific communication. Long before the widespread availability and adoption of the Internet and the World Wide Web, she predicted that:

The line between informal and formal communication and publication will begin to blur more and more, and the roles of participants in the process of science communication will change considerably. Through electronic processes, it will be possible to write, review, edit, classify, retrieve, and transmit information (Kramer, 1985, p. 40).

Such electronic processes have not only modernized the distribution of preprints but also, as in the case of arXiv.org, transformed the entire process of communication among scholars worldwide.

## References

- Ginsparg, P. (1994), "First steps toward electronic research communication", *Computers in Physics*, Vol. 8 No. 4, July/August, pp. 390-6.
- Harnad, S. (undated), "Integrating and navigating e-print archives through citation linking", available at: <http://www.cogsci.soton.ac.uk/~harnad/citation.html>
- Hurd, J.M. (1996), "High energy physics", in Crawford, S.Y., Hurd, J.M. and Weller, A.C. (Eds), *From Print to Electronic: The Transformation of Scientific Communication*, Information Today, Inc., Medford, NJ.
- Kramer, R. (1985), "The role of the preprint in communication among scientists", paper prepared according to the requirements for Library Science 571, Northern Illinois University, Department of Library Science, ED 261685.
- Luzi, D. (1998), "E-print archives: a new communication pattern for grey literature", *Interlending & Document Supply*, Vol. 26 No. 3, pp. 130-9.
- Open Citation Project (2000), "About the project", available at: <http://opcit.eprints.org/opcitabout.shtml>
- PubMed Central (undated), "About PubMed Central", available at: <http://www.pubmedcentral.nih.gov/about/index.html>
- Taubes, G. (1993), "Publication by electronic mail takes physics by storm", *Science*, Vol. 259 No. 5099, February 26, pp. 1246-8.
- US Department of Energy, Office of Scientific and Technical Information (undated), "PrePRINT network", available at: <http://www.osti.gov/preprint/>
- Van de Sompel, H. and Lagoze, C. (2000), "The Santa Fe Convention of the Open Archives initiative", *D-Lib Magazine*, February, Vol. 6 No. 2, available at: <http://www.dlib.org/dlib/february00/vandesompel-oai/02vandesompel-oai.html>
- Van de Sompel, H., Krichel, T., Nelson, M.L., Hochstenbach, P., Lyapunov, V.M., Maly, K., Zubair, M., Kholief, M., Liu, X. and O'Connell, H. (2000), "The UPS prototype: an experimental end-user service across e-print archives", *D-Lib Magazine*, February, Vol. 6 No. 2, available at: <http://www.dlib.org/dlib/february00/vandesompel-ups/02vandesompel-ups.html>
- Varmus, H. (1999), "E-BIOMED: a proposal for electronic publications in the biomedical sciences", available at: <http://www.nih.gov/about/director/pubmedcentral/ebiomedarch.htm>
- Youngen, G.K. (1998), "Citation patterns to traditional and electronic preprints in the published literature", *College and Research Libraries*, Vol. 59 No. 5, September, pp. 448-56.
- Ziman, J.M. (1968), *Public Knowledge: An Essay Concerning the Social Dimension of Science*, Cambridge at the University Press, Cambridge.

## Availability

All archives are on a daily availability schedule, with no activity scheduled on weekends.

Example: a submission to hep-th on Monday before 17.00 (LANL time, MDT/MST) will be available after 22.00 (LANL time, MDT/MST) on that day and will appear in the Tuesday a.m. hep-th regular mailing.

Example: A submission to hep-th on Friday before 17.00 (LANL time, MDT/MST) will be available after 22.00 (LANL time, MDT/MST) of the following Sunday and will appear in the Monday a.m. hep-th regular mailing.

Example: A submission to hep-th on Friday after 17.00 (LANL time, MDT/MST) will be available after 22.00 (LANL time, MDT/MST) of the following Monday and will appear in the Tuesday a.m. hep-th regular mailing.

## Mirror sites

- au.arXiv.org (Australia)
- br.arXiv.org (Brazil)
- cn.arXiv.org (China)
- fr.arXiv.org (France)
- de.arXiv.org (Germany)
- in.arXiv.org (India)
- il.arXiv.org (Israel)
- it.arXiv.org (Italy)
- jp.arXiv.org (Japan)

ru.arXiv.org (Russia)  
za.archiv.org (South Africa)  
kr.arXiv.org (South Korea)  
es.arXiv.org (Spain)  
tw.arXiv.org (Taiwan)  
uk.arXiv.org (UK)  
arXiv.org (USA)  
aps.arXiv.org (USA)

## **Support**

The arXiv.org e-print archive is based upon activities supported by the US National Science Foundation under Agreement No. 9413208 (March 1, 1995-September 30, 2000) with the Los Alamos National Laboratory (LANL), and by the US Department of Energy (DOE).