

TRUCKVAULT®





FREE SHIPPING ON ALL ORDERS

We are proud to offer
our customers free shipping on
all TruckVault In-Vehicle Secure
Storage System orders within the
contiguous 48 states.*

| | |
|--|-------------|
| NOTE FROM THE CEO - AL CHANDLER | PAGE 3-4 |
| CUSTOM AND SECURITY FOCUS | PAGES 7-8 |
| FOR SUVS | PAGES 11-12 |
| MICHAEL BACCELLIERI - TAKING AIM AT SECURE STORAGE | PAGES 13-14 |
| CHEVY TAHOE | PAGE 15 |
| FORD EXPLORER | PAGE 16 |
| SUV SIRIES // FLOORVAULT | PAGES 17-20 |
| SUV SERIES // DRONE COMMANDER LINE | PAGES 21-24 |
| JAMES BUSEY - START TO FINISH DRONE SOLUTIONS | PAGES 25-26 |
| SUV SERIES // ELEVATED LINE | PAGES 27-28 |
| SUV SERIES // LIFT SYSTEM | PAGES 29-30 |
| SUV SERIES // COMMANDER LINE | PAGES 31-34 |
| SUV SERIES // RESPONDER LINE | PAGES 35-36 |
| SEDAN SERIES | PAGES 37-38 |
| TRUCK CAMPING | PAGES 39-44 |
| PICKUP SERIES // COVERED BED LINE | PAGES 45-46 |
| PICKUP SERIES // INTERIOR CAB LINE (SEATVAULT™) | PAGES 47-50 |
| PICKUP SERIES // ALL-WEATHER LINE | PAGES 51-56 |
| PICKUP SERIES // FOR GOOSENECK TRAILERS | PAGES 57-58 |
| WHY BUY TRUCKVAULT? | PAGES 59-60 |
| ADDITIONAL PRODUCTS AND ACCESSORIES | PAGES 61-62 |
| SHEAHAN MCCULLA - Q&A WITH ENGINEERING MANAGER | PAGES 65-66 |
| PRODUCT OPTIONS AND UPGRADES | PAGES 67-68 |
| PRODUCT TESTING | PAGES 71-72 |
| WARRANTY AND CONTACT INFORMATION | PAGES 73-74 |

* Excludes liftgate, residential, and other miscellaneous delivery fees. Visit www.truckvault.com/freeshipping for more details.



ONTO THE NEXT ADVENTURE

PARTING WORDS FROM OUR FOUNDER AND LEADER

Farewell, TruckVault.

My good friend, Captain Sy Iffert (1920 -2020), once told me the reason we got along so well was that we always talked about things we were going to do rather than things we had done. To the end, Sy never stopped looking forward. Like him, my focus is on things I'm going to do rather than the things I have done.

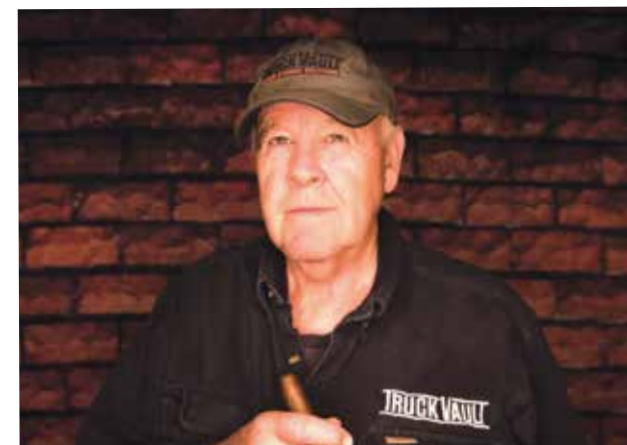
TruckVault has been a great trip, but it is time for the younger, more energetic, and most certainly smarter to take over. Fortunately, TruckVault has no shortage of incredible people with great talent and ideas. With that in mind, a new CEO

will be chosen to take the helm at TruckVault at the end of March 2022. I will be around to answer questions should I be asked.

My rocking chair will continue to collect cobwebs as there is much to do. In June my wife and I will travel to Scotland, England, France, Spain, and Portugal and will return to our duties at our farm at summer's end. Beyond that, who knows what projects come next?

My years at TruckVault have seen customers, colleagues, and vendors become life-long friends, and I thank all of you for sharing this part of my journey. Life is just one adventure after another and I am anxious to move forward to whatever new adventures await.

With gratitude,



Alan Chandler
CEO - AL CHANDLER

“LIFE IS JUST ONE ADVENTURE AFTER ANOTHER AND I AM ANXIOUS TO MOVE FORWARD TO WHATEVER NEW ADVENTURES AWAIT.”





SECURITY : IT'S OUR #1 PRIORITY

At TruckVault, we take pride in providing our customers with the peace of mind that comes from knowing their valuable gear is secure, no matter where they may leave their vehicle.



PUSH-BUTTON WITH KEY OVERRIDE LOCK

The most secure and trusted lock among law enforcement agencies.



ALL-WEATHER COMPRESSION LOCK

Heavy-duty key lock used in conjunction with All-Weather Series TruckVault Secure Storage Systems.

>
VIEW MORE OPTIONS



CUSTOM... IT'S WHAT WE DO

CUSTOM DRAWER SIZING

TruckVault can customize the size, number, and orientation of the drawers of your TruckVault Secure Storage System to create virtually any configuration.

CUSTOM BED CONFIGURATIONS

If you have tanks, tool boxes, gooseneck hitches or any other equipment in the truck bed, just provide us with the detailed measurements, and we can customize an item to fit.

MULTI-STACKED DRAWERS

Sometimes the best direction to go is up. When space is limited, or equipment is at a maximum, we can stack drawers to maximize secure storage.

DRAWER FACE FINISHES

You can even customize the look and feel of your TruckVault Secure Storage System with optional accessory drawer faces in a wide range of high-end wood grain finishes.



OFFERING ONE MORE LINE OF DEFENSE

In today's firearm sensitive culture, it is paramount that weaponry and other valuables be secured responsibly. Strike Guard Technology™ has been added to reinforce the Push Button Key Override Kaba Lock with a flanged lip, consisting of a Strike Plate and Backer Plate constructed of AISI 1020 Galvanized Steel. The Strike Plate works in unison with the Backer Plate and the primary structure of the unit to firmly lock the bolt and help prevent bolt tampering and movement.



STRIKE PLATE

Works in unison with the Backer Plate to help prevent bolt tampering and movement

BACKER PLATE

Works in unison with the Strike Plate to help prevent bolt tampering and movement



// SUV SERIES



LOADED AND LOCKED

In the early years, pickups were the mainstay of business for TruckVault. This remained the case for some time, until a tradeshow customer suggested that we make products for SUVs. From there, our Public Safety business took off, and the rest, as they say, is history. Now our popular and diverse line of SUV products for Tahoes, Explorers and all mid-sized SUVs are among our top sellers.



>
**VIEW MORE
OPTIONS**



1 DRAWER STANDARD
SUV - Base Line



2 DRAWER MAGNUM
SUV - Base Line



OFFSET UTILITY
SUV - Base Line



FLOORVAULT
SUV - Base Line



CAPTAIN LX
SUV - Commander Line



SPECIAL OPS
SUV - Commander Line



INVESTIGATOR
SUV - Commander Line



FIELD RANGER
SUV - Commander Line

TAKING AIM AT SECURE STORAGE

FIREARMS INSTRUCTOR MICHAEL BACCELLIERI RELIES ON TRUCKVAULT FOR SECURE STORAGE.

In 2014, Michael Baccellieri, known to those in the industry as "Buck", was brought on to Leupold & Stevens as the Lead Optics and Firearms Instructor. After a few years of wrestling equipment to and from hotel rooms, Baccellieri was able to install a TruckVault system in the back of Leupold's F-250, and it was a gamechanger. "It made life a heck of a lot easier," he explained. "Not only does it make you more proficient and efficient as an instructor, but it maintains the security of all your gear." Spacious enough to house even his tallest rifles, his is a two-drawer magnum-height system with offset drawers.

Leupold has a full inventory of custom-built American precision arms, AR-15s and Glock pistols, and with a TruckVault, he can outfit an entire class, up to twelve rifles, in one drawer and still have plenty of room for his personal items in the other. Whether at headquarters or traveling across the country, Baccellieri's gear remains absolutely secure and waterproof, which he claims is "a really really big deal."

These days, Baccellieri is the Military Business Development Manager at Leupold, which means he services military and law enforcement customers in the classroom and on the range. To bridge the gap between the two, his vault showcases a flip-up whiteboard and desk system, which is just one of his favorite aspects. "There's about a dozen features in these things that make them invaluable to me," he explained. "This has literally been one of the most important pieces of equipment that we have in our inventory."



“THERE'S ABOUT A DOZEN FEATURES IN THESE THINGS THAT MAKE THEM INVALUABLE TO ME. - MICHAEL BACCELLIERI





BUILT FOR YOUR PURPOSE

TruckVault Secure Storage Systems are an ideal match for the Chevy Tahoe. Our specific designs maximize storage space and utilize factory lock downs for easy and secure installation. TruckVault has a wide range of designs for all generations, allowing for many aftermarket accessories, including prisoner containment and K9 units.



CHIEF
SUV - Commander Line



CUSTOM INVESTIGATOR
SUV - Commander Line



FIELD RANGER
SUV - Commander Line

EXPLORE YOUR OPTIONS

The new Ford Explorer is one of the most popular SUVs on the road today, and TruckVault has a full suite of models designed specifically for it. Utilizing an innovative bracket installation system for the ultimate in security, a TruckVault Secure Storage System is the perfect accessory to get the most out of your Explorer.



1 DRAWER MAGNUM ON LIFT SYSTEM*
SUV - Elevated Line

*See page 30 for more product details.



INVESTIGATOR
SUV - Base Line



2 DRAWER STANDARD
SUV - Base Line



OUT OF SIGHT OUT OF MIND

Engineered for the Dodge Durango and the Tesla Model Y, the FloorVault is the definition of discreet. By designing a product that sits in a unique floor-space, we've cracked the rare combination of high security and low visibility. Take advantage of all the gear storage space your Durango or Model Y has to offer with the FloorVault.



I WAS BLOWN AWAY AT HOW EXCITED AND RESPONSIVE THEY WERE TO TAKE ON THIS TESLA PROJECT. - **US MARSHALS AGENT**

2 DOOR FLOORVAULT SUV - Base Line

**Available for a small variety of select vehicles, including Dodge Durango 2011+ and Tesla Model Y.*



< **VIEW MORE
DETAILS**





SUV SERIES // DRONE COMMANDER LINE



DRONE CENTRAL COMMAND

Be ready at a moment's notice with our Drone Responder Line. These units are specially designed to house integrated drone technology while on the go and transform into a fully-functioning drone command center upon arrival at a scene. With 7 options boasting various levels of storage, power and remote viewing, you're sure to find the perfect solution for your agency or department.



[VIEW MORE DETAILS](#)



DRONE RESPONDER 1
SUV - Done Responder Line



DRONE RESPONDER 2
SUV - Done Responder Line



DRONE RESPONDER 3
SUV - Done Responder Line



DRONE RESPONDER 4
SUV - Done Responder Line



DRONE RESPONDER 5
SUV - Done Responder Line



DRONE RESPONDER 6
SUV - Done Responder Line



DRONE RESPONDER 7
SUV - Done Responder Line



START TO FINISH DRONE SOLUTIONS

Q&A WITH ADORAMA'S RESIDENT DRONE EXPERT JAMES BUSHEY

We sat down with Adorama's James Bushey, a police chief in Wisconsin, to ask him about what TruckVault offers to law enforcement drone programs, as well as why Adorama is partnering with TruckVault to streamline the drone command center process for departments and agencies everywhere.

Q: How do you use drones in your department?

A: In an unknown tactical high-stress environment, we can send a robot in and let it do the heavy lifting for us, and then send the appropriate team members in after that to do the work more efficiently and safer.

Q: Explain to us how you used to build your department's drone rigs.

A: I've actually custom-built our squad cars for quite a while because we have niche-specific systems in each one. We used to have to rig a lot of things together. We were trying to find the power inversion and the storage capabilities and the remote viewing. [TruckVault] did everything all beautifully packaged together. They had everything we needed in one stop shop, and for less than what we were building it out for piece by piece.

Q: What do you personally like about using the TruckVault system?

A: It's well built, it's super easy to use and totally customizable. It's rugged. I see a lot of other companies out there building storage solutions, but nothing as robust as what the TruckVault offers.

Q: Why did Adorama Business Solutions decide to partner with TruckVault?

A: We decided to partner with TruckVault because [they] were the end solution to everything. We didn't have to go anywhere else to find anything else that we would need to create these solutions.



THEY HAD EVERYTHING WE NEEDED IN A ONE STOP SHOP, AND FOR LESS THAN WHAT WE WERE BUILDING IT OUT FOR PIECE BY PIECE. - **JAMES BUSHEY**

SUV SERIES // ELEVATED LINE

ELEVATE YOUR SECURITY

Our Elevated models mount one of our industry-leading TruckVault Secure Storage Systems atop rugged, powder-coated, steel brackets to allow easy access to the spare tire in certain models of SUVs. The brackets are affixed directly to factory locations on the vehicle for a secure and sturdy install. The new elevated design also allows for storage of items that do not need to be secured under the drawer system.

PRODUCT HIGHLIGHTS

- Open space for unsecured items.
- Easy spare tire access.
- Available with a variety of drawer heights and lock options.
- Rugged, powder coated steel bracketry.
- Elevated, yet still maintains rear window line of sight.



PULL OUT RADIO TRAY FOR ELEVATED DESIGNS

Positioned directly below your secure gear storage drawer, the Radio Tray add on integrates perfectly with all Elevated Designs, providing quick and easy access to your radio and electronic gear.



QUICK ACCESS TO YOUR SPARE

Flip up the factory floor panel, or the included replacement panel on some models, to gain direct access to the spare.



RUGGED BRACKETS

Steel brackets secure directly to factory locations for a secure and tough install.



MAXIMIZE STORAGE

Preserves space underneath to store items that do not need to be secured.

>
VIEW MORE
OPTIONS



SUV SERIES // LIFT SYSTEM



SPARE TIRE ACCESS

Maintaining access to your spare tire is an important factor in finding secure storage that works for you. To achieve this, we've designed a method for maintaining access in your pursuit SUV. The Lift System allows for a full-size TruckVault Secure Storage System to be raised on a reinforced hydraulic lift to gain entry to your spare tire.



RADIO TRAY + LIFT SYSTEM

Maintain easy and quick access to your radio and electronic gear with a bottom mounted Radio Tray Lift System.

(5 7/8" of clearance for electronic equipment)



STEP ONE

Hand-loosen the two star knobs located on both sides of the TruckVault Secure Storage System.



STEP TWO

Firmly grasp the handles on the drawer face and slide the unit out to its fully extended position. Hand-tighten the outside safety locks from step one.



STEP THREE

Using the handles, lift the unit upward. The built-in air assist cylinders will help offset the weight.



***1 DRAWER MAGNUM ON LIFT SYSTEM SUV - Elevated Line**

*Only the 2011+ Ford Explorer can accept the Lift System.



VIEW MORE DETAILS



SUV SERIES // COMMANDER LINE



WHY A COMMAND CENTER?

When you need a mobile office in the field, the TruckVault Command Center Line creates an entire working space in your department's full-sized SUV. Organized secure storage, map board, and equipment drawers reside in the back, while file cabinets and desk space are accessed at the middle of the vehicle, creating the ultimate in-field office solution.



[VIEW MORE OPTIONS](#)



CHIEF
SUV - Commander Line



TAC CENTER
SUV - Commander Line



SURVEYOR
SUV - Commander Line



CAPTAIN LX
SUV - Commander Line



SPECIAL OPS
SUV - Commander Line



INVESTIGATOR
SUV - Commander Line



FIELD RANGER
SUV - Commander Line



READY FOR THE MOMENT

Designed based on feedback from Emergency First Responders, our Responder Line features various configurations of secure storage, cubbies, whiteboards, charging stations, and much more. This highly customizable line was created to adapt to the ever-changing landscape of 21st century incident command and is entirely made-to-order, ensuring the perfect fit for your department.



[VIEW MORE OPTIONS](#)



RESPONDER 1
SUV - Responder Line



RESPONDER 2
SUV - Responder Line



RESPONDER 3
SUV - Responder Line



RESPONDER 4
SUV - Responder Line



RESPONDER 5
SUV - Responder Line



RESPONDER 6
SUV - Responder Line



RESPONDER 7
SUV - Responder Line



RESPONDER 8
SUV - Responder Line

// SEDAN SERIES



SECURE YOUR GEAR

Sedan Series products have emerged from the core ideals of TruckVault's focus on security and protection. Generally constructed as single drawer units, these workhorses of the law enforcement community are geared to serve all your weapon or valuable secure storage needs while maximizing space that normally would go unused in your trunk. Custom units can be designed as well, including models with room for radio equipment and other sensitive electronics.



[VIEW MORE OPTIONS](#)



PRODUCT DETAILS

| | WIDTH | DRAWERS | LENGTH | DEPTH |
|---------------------------|------------|---------|------------|--|
| 1 DRAWER // | - | - | - | - |
| RADIO PATROLMAN // | 33" to 43" | 1 | 16" to 30" | 4.875" to 8.875" |
| | | 2 | 16" to 30" | Top: 3.75" to 6.25" Bottom: 2.75" to 3" |



RADIO PATROLMAN
Sedan - Elevated Line



STANDARD 1 DRAWER
Sedan - Elevated Line



STANDARD 1 DRAWER
Sedan - Base Line





OFF GRID LIVING AT ITS BEST

VIEW MORE [OPTIONS](#)



Truck bed living is the new form of adventure, and our camping systems for pickups, SUVs and vans are designed to keep up with you wherever you go, featuring lockable storage that doubles as the perfect sleeping platform. Whether you're braving the elements or sleeping out under the stars, TruckVault gives you the peace of mind you need to kick back, knowing that your sensitive gear is completely secure and protected from any weather or any creatures you might encounter.



IT HAS PROVIDED A SECURE AND VERSATILE SPACE FOR MY EVER CHANGING WARDROBE OF EQUIPMENT. - **JOHN HARRINGTON**





PHOTO: REVOL Entertainment



PHOTOS: Tyler Nelson



PHOTO: Tyler Nelson



SECURITY THAT COVERS YOU

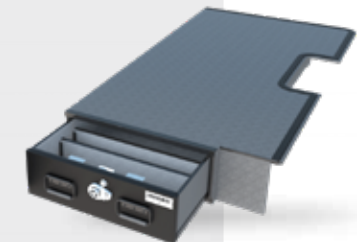
Standard TruckVault Secure Storage Systems for pickups focus on single level carpeted units integrated with our highly regarded Strike Guard Technology™, providing excellent security no matter where your activities or job take you.



[VIEW MORE OPTIONS](#)



2 DRAWER STANDARD
Pickup // Covered Bed Line



HALF-WIDTH STANDARD
Pickup // Covered Bed Line



2 DRAWER UTILITY
Pickup // Covered Bed Line



OFFSET UTILITY
Pickup // Covered Bed Line



2 DRAWER MAGNUM
Pickup // Covered Bed Line



OFFSET MAGNUM
Pickup // Covered Bed Line



PICKUP SERIES // INTERIOR CAB LINE



IN-CAB SECURE STORAGE

Out of sight, out of mind. Keep your firearms and expensive gear secured and concealed in the cab of your pickup with the TruckVault Interior Cab Series SeatVault™ storage systems. The back seat of your pickup provides enough space to fit storage systems for AR platform rifles, shotguns, handguns and a variety of tactical gear.



[VIEW MORE SEATVAULT](#)



SEATVAULT™ COMPATIBILITY (Subject to Change) * Prior to 2020 models, Silverado Diesels are not compatible)

| | MODEL YEAR | VEHICLE MODEL | EXTERIOR DIMENSIONS |
|---------------------|--|--|--|
| FORD // | 1997 to 2003 2009 to Present 2014 to Present 2014 to Present 2014 to Present | F-150 Extended Cab F-150 Super Crew Cab F-250 Super Crew Cab F-350 Super Crew Cab F-350 Extended Cab | 55" W X 8" L X 5" H 55" W x 12" L x 5.5" H 55" W X 8" L X 5.5" H 55" W X 8" L X 5.5" H 35" W X 8" L X 5.5" H |
| CHEVROLET // | 2014 to Present 2007 to Present 2014 to Present 2004 to 2012 | *Silverado 1500 Crew Cab *Silverado 2500 Crew Cab *Silverado 3500 Crew Cab Colorado Extended Cab | 55" W X 12" L X 5.5" H 55" W X 12" L X 5.5" H 55" W X 12" L X 5.5" H 48" W X 12" L X 8.25" H |
| DODGE // | 2019 to Present | RAM Pickup | 38" W X 10" L X 5.5" H |
| GMC // | 2007 to 2015 2015 to 2018 2019 to Present | Sierra Sierra Sierra | 55" W X 12" L X 4.5" H 55" W X 12" L X 4.75" H 55" W X 12" L X 6" H |
| HONDA // | 2006 to 2017 2017 to Present | Ridgeline Ridgeline | 52" W X 10" L X 8" H 54" W X 11" L X 8" H |
| JEEP // | 2020 to Present | Gladiator | 43" W X 9.5" L X 5.5" H |
| NISSAN // | 2004 to 2015 | Titan | 50" W X 13" L X 7" H |





PICKUP SERIES // ALL-WEATHER LINE



PROTECT AGAINST WATER & GRIT

Through frigid Montana winters and blistering Texas summers, your gear is protected to the fullest. We've even taken fire hoses to the front of our TruckVault Secure Storage Systems—that's more than 100 pounds of direct water pressure—and not a drop got inside. When put to the test, TruckVault Pickup Series All-Weather products perform every time.



[VIEW MORE OPTIONS](#)



2 DRAWER STANDARD
Pickup // All-Weather Line



HALF-WIDTH STANDARD
Pickup // All-Weather Line



2 DRAWER UTILITY
Pickup // All-Weather Line



OFFSET UTILITY
Pickup // All-Weather Line



2 DRAWER MAGNUM
Pickup // All-Weather Line



OFFSET MAGNUM
Pickup // All-Weather Line

* The All-Weather Series™ is covered by a 3-year limited customer lifetime warranty. See page 55 for more details.

HAVE A GOOSENECK TRAILER?

If you thought your gooseneck hitch was incompatible with a TruckVault, think again. Our gooseneck build is designed to allow full access to your hitch, making secure all-weather storage an option in conjunction with whatever you need to haul. Complete with a two full length drawers and a third for smaller items, there's tons of space for your most sensitive and expensive gear.



I HAVE NO ISSUES WITH THE TRUCKVAULT IMPEDING ME FROM HOOKING UP MY TRAILER... A FEW EXTRA TURNS OR CRANKS ON THE JACKS AND I'M ABLE TO CLEAR THE VAULT. - SPECIAL OPS OFFICER

GOOSENECK PickUp - All Weather Line

3 drawer configuration that includes two long drawers spanning the entire length of the bed.



< **VIEW MORE
DETAILS**

WHY BUY TRUCKVAULT?

- 01

HEAVY-DUTY PUSH BUTTON LOCKS.

Five-button combination locks with key override for easy access provide premium protection and security.
- 02

PREVENTS HARMFUL MOISTURE

Drawers stop potentially damaging condensation brought on by the earth's elements.
- 03

PROTECTS FROM DUST AND DIRT

TruckVault Secure Storage Systems protect from dust, dirt and grit with tightly sealed drawers.
- 04

STRONGER AND LIGHTER

Constructed with extremely tough MDO, TruckVault Secure Storage Systems are stronger than metal or plastic and travel silently.
- 05

PROVEN FIRE RESISTANCE

TruckVault Secure Storage Systems insulate stowed equipment from heat and fire damage.
- 06

PROTECTION FROM THEFT & BREAK-INS

Each drawer system is engineered to resist break-ins, and low-profile models resemble the floor of your vehicle.
- 07

A FIT FOR VIRTUALLY ANY VEHICLE

TruckVault Secure Storage Systems are built to fit the vehicle they are ordered for, ensuring a perfect fit and finish every time.
- 08

SIMPLE INSTALLATION

Nearly every model of TruckVault Secure Storage System can be installed in under an hour and usually includes all hardware you'll need for the job.
- 09

CUSTOM CAPABILITIES

TruckVault's team frequently engineers custom solutions to meet individual customer needs.
- 10

LIFETIME CUSTOMER WARRANTY

Trouble-free operation guaranteed as long as you own your vehicle. Warranty may be transferred (original purchaser only) to new vehicle. Locks have a one-year limited warranty from the lock manufacturer.

MEDIUM DENSITY OVERLAY (MDO)

FEATURES

MDO is a wood substrate formed from weather-resistant resin overlays bonded to multiple layers of wood by heat and pressure. This process creates an extremely strong and durable material that is up to 40% stronger than other plywood products. Trusted in numerous industries, including home construction and concrete formwork, MDO is the perfect material to create a strong, secure, and customizable product.

BENEFITS

As one of the strongest wood materials on the market, MDO is highly dependable for security products. You'll feel the strength the moment you open the drawer. MDO also provides heat, moisture and humidity protection superior to metal enclosures. When you combine these benefits with the ability to completely customize products to a wide range of designs, you have the very best secure storage solution for vehicles on the market.



QUALITY PRODUCTS ARE MADE WITH THE BEST MATERIALS AND CRAFTSMANSHIP. TRUCKVAULT HAS FOUND THE PERFECT ONE-TWO PUNCH.

BLACK COMPOSITE



The default drawer front on every drawer system is Black Composite. This material provides a dense and consistent surface with extremely tight tolerances around the drawer face to ensure maximum security. High-grade wood grain drawer fronts are also available for those seeking a classic look.

CARPET



TruckVault Secure Storage Systems most commonly come completely carpeted inside and out with automotive-grade carpet. Color-matched to industry standards, the carpet blends the drawer system seamlessly with your vehicle's factory interior.

ALL-WEATHER COATING



Weatherproof Armour Coating comes standard with each Pickup Series All-Weather Line TruckVault Secure Storage System. The coating is sprayed on after the drawer system build is completed, ensuring supreme protection from harmful heat, fire, grit and moisture.

ADDITIONAL PRODUCTS & ACCESSORIES

CARGOGLIDE

With a CargoGlide, you can access the very deepest portion of your pickup bed without having to crawl on your hands and knees every time you need your unsecured gear. Stop scuffing your knees and straining your back. Install a CargoGlide today!

- Aluminum frames with standard TuffDeck™ surface
- 100% extension, optional 70% extension
- 4.5" side rails with tie-down access
- Stock and custom sizes
- 600-pound to 2,500-pound capacity
- All units tested to 50% overstated capacity for user safety
- Sixteen liner bearings per CargoGlide
- Designed, engineered, and built in USA



CARGOGLIDE
Call For Pricing

HEAVY-DUTY PULL OUT TABLE

An additional work surface you can depend on! Perfect for the operator who needs to work right in the field. Locking heavy-duty slides can support up to 200 pounds, and the standard laminated surface will stand up to the rigors of field work. Available in both bottom table and top tray open tray versions, and carpeted or magnetic dry-erase surfaces.

- Bottom table and open top tray versions
- 200-pound capacity
- Locking heavy-duty slides
- Offered in standard laminated surface with available options of carpeted or magnetic dry erase working surface



HEAVY-DUTY PULL OUT TABLE
Call For Pricing

IN-DRAWER LIGHTING

New and improved in-drawer LED lighting provides 16–20 hours (battery dependent) of white or red light to help illuminate the interior of your drawers. Mount to the interior carpet of your drawer unit using the provided 3M Velcro strips or use the mounting bracket and corresponding screws for a more permanent fixture. Available for \$35 retail by calling today.



IN-DRAWER LIGHTS
MSRP \$35 USD

MAGNETIC MAP BOARDS

A great solution for team planning in the field. Custom and free floating on ledgers, you can either stand them up, use them as a flat writing surface, or take them with you. Installed towards the top of the drawers to preserve storage underneath. Available with or without a pencil cubby.



MAGNETIC MAP BOARDS
Call for Pricing

TRUCKVAULT DAYBOX

Due to increased customer demand, TruckVault is now manufacturing its high-quality line of Class III Dayboxes in two sizes: Standard Height and Magnum Height, both of which will fit securely into our TruckVault Secure Storage Systems. TruckVault Dayboxes meet or exceed all ATF standards for temporary supervised storage of explosives and detonators. Custom sizing is also available.

MAGNUM DAYBOX
MSRP \$445 USD
Inside Dimensions:
12.5" x 6.5" x 3.5"

STANDARD DAYBOX
MSRP \$395 USD
Inside Dimensions:
12.5" x 6.5" x 3.5"



BRACKET SYSTEM
\$110 USD

TECHNOLOGY PLATFORM

The TruckVault Technology Platform (TTP) is designed to provide power and lighting where you need it, when you need it, for as long as you need it.

- TTP 12-volt power for charging and operating mobile devices (5v USB adapters available)
- TTP provides 120-volt power inside drawers (inverter required)
- Cubbies and table extensions for laptops and other portable gear
- Heavy-duty wiring and state-of-the-art cable handling ensure years of dependable service.
- Top, side or inside the drawer power mounting is available.



TECHNOLOGY PLATFORM
Call for Pricing



ENGINEERED FOR SECURITY

Q+A WITH TRUCKVAULT'S ENGINEERING MANAGER

Sheahan McCulla is TruckVault's Engineering Manager, which means he oversees the intricacies of TruckVault builds and is constantly creating new and improved designs. We chatted about his firearm getting stolen, product testing, and the importance of customizability.

Q: You had an experience with gun theft. Tell us a little more about that.

A: On my sixteenth birthday, my parents surprised me with a Savage 308. It was the best present I can ever remember. I loved that gun. A few years later when I was in college, my dad called me and told me that our guns were stolen, including mine, and

I remember I was devastated. That was my baby. That could never be replaced - it was special to me."

Q: How does that experience affect your work?

A: It drives making sure our product is secure. I'd hate for anyone else to have that feeling - something special to them stolen. It drives what we do, how we test, making sure our product is the most secure out there.

Q: How important is product testing to TruckVault's mission?

A: It's important for us to get out and test how it's locked down - make sure these locks function correctly after these bumpy roads. Some of our users use these day in day out and it's gotta be reliable.

Q: Why is customizability a major feature for TruckVault?

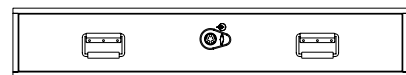
A: By having the core of the TruckVault similar for makes and models, we just need to redesign the wings to fit the contours and the height so the drawers clear. If we can measure it, we can build it.



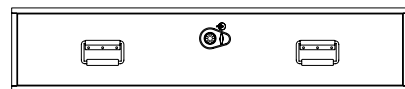
“IT DRIVES WHAT WE DO, HOW WE TEST, MAKING SURE OUR PRODUCT IS THE MOST SECURE OUT THERE. - SHEAHAN McCULLA

PRODUCT OPTIONS AND UPGRADES

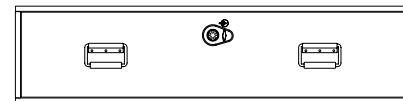
DRAWER HEIGHT



STANDARD HEIGHT : 6 1/8"
Enough vertical room for various low-profile equipment and gear.



UTILITY HEIGHT : 8 1/8"
Providing additional head space for mid-size equipment and gear.

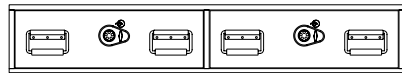


MAGNUM HEIGHT : 10 1/8"
Ample drawer depth for larger equipment and gear.

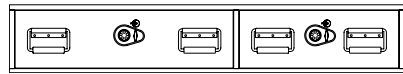
DRAWER COUNT



ONE DRAWER
Open storage space with abundant organizational options, allowing space for larger items.

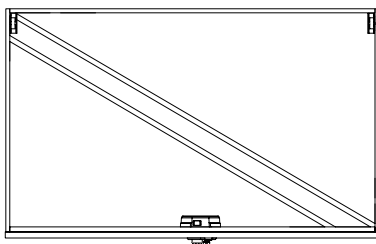


TWO DRAWERS
Splitting up your available storage space can help keep sensitive gear separated.

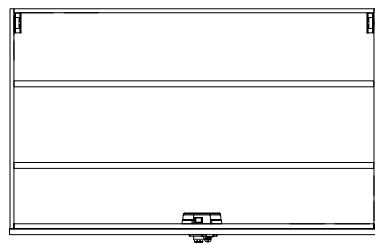


OFFSET DRAWERS
Allowing for larger sized gear to be stored separately from smaller items when needed.

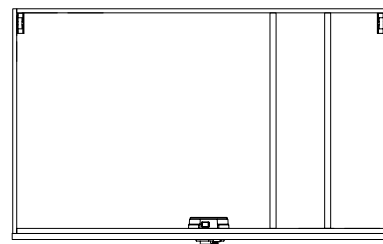
DIVIDER PACKAGES



DIAGONAL
Run from corner to corner, good for long and narrow pieces of equipment.



LONG
Run the length of your longest drawer side and can be positioned in any desired form.



SHORT
Section off the interior drawer into a number of compartments.

DRAWER LOCKS



KABA SIMPLEX COMBO LOCK



SILVER T-LOCK



SLAM LATCH



BLACK T-HANDLE

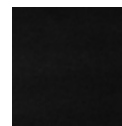


KEYLESS ENTRY FOB



FOLDING T-HANDLE (ALL-WEATHER)

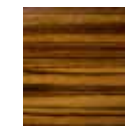
DRAWER FACES



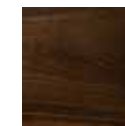
BLACK



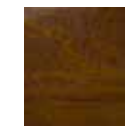
MAHOGANY



ZEBRAWOOD



WALNUT



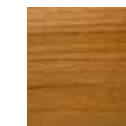
ORVIS TEAK



CHERRY

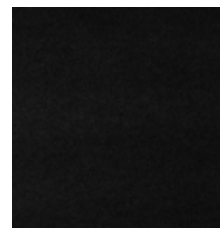


WHITE MAPLE

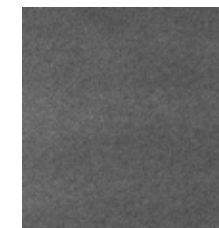


OAK

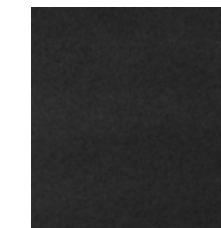
CARPET COLORS



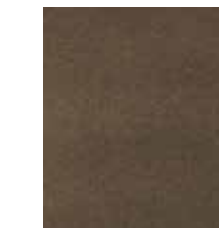
BLACK



GRAY



CINDER

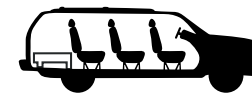


BEIGE

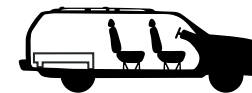


BEDRUG GRAY

VEHICLE LENGTH



SHORT : Fits snug against the 3rd row seat.



MEDIUM : For vehicles with no 3rd row seats.

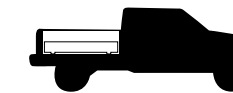


FULL : Extends all the way to the back of the 2nd row seat.

SHORT BED : Spans 5'6" of bed length.



MEDIUM BED : Spans 6'6" of bed length.



FULL BED : Spans 8' of bed length.








DRAWER WEIGHT TEST

How much weight can I put in my TruckVault Secure Storage System, you ask? The easy answer is, more than you can physically pull out! We advise customers that they can pack as much as 200 pounds into each drawer and things will function normally. But to really put our product to the test, we filled two Standard Drawers with 13 cases of shotgun shells and four sporting shotguns—a total of 379 pounds! Fearing this would be too much, we were surprised to find that the weight still didn't come close to reaching the drawers' full capacity. As a result, we're confident each drawer could handle 300 pounds.

TEST RESULTS:
As long as you can pull out and push in the drawers, they can handle more!

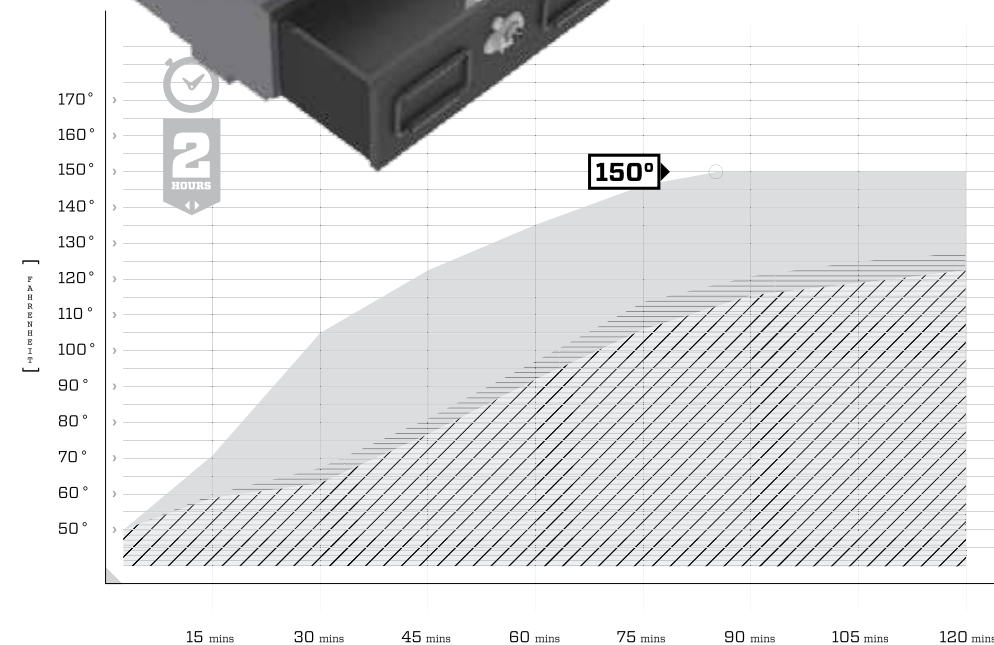

300
POUNDS of GEAR PER DRAWER



| | | | |
|-----------|-------------------------|---|-----------------|
| 13 | CASES OF SHOTGUN SHELLS |  | 351 lbs. |
| 04 | SHOOTING SPORT SHOTGUNS |  | 28 lbs. |
| 02 | STANDARD HEIGHT DRAWERS |  | 6 1/8" |

28%
MORE HEAT RESISTANT

After two hours in a test oven heated to 150° F, each TruckVault remained roughly 28% cooler than the leading metal competitor.



 EXTREME ALL-WEATHER TRUCKVAULT
 STANDARD CARPETED TRUCKVAULT
 LEADING METAL COMPETITOR

DRAWER HEAT TEST

Can TruckVault Secure Storage Systems take the heat? We tracked down a truck-sized oven to find out. Our goal was to simulate punishing desert heat inside a vehicle at midday—150° Fahrenheit. The result? TruckVault products provided superior insulation and protection across the board, making them a superior choice to competing steel or plastic products for protecting sensitive electronics, plastics, food, ammunition and another heat-sensitive cargo.

MINUTES TO 120°

Which products hit the 120 degree mark the fastest? Here are their times...



Test products in the controlled oven



Temperature gauges being prepped for test

WARRANTY DETAILS

ALL-WEATHER LINE arrives with a three-year warranty. TruckVault warrants you, the original storage system purchaser, that for a period of three years from when you receive your All-Weather Line TruckVault Secure Storage System, so long as it is installed properly and utilized in the manner of its intent, it will be free from defects resulting from inferior materials and/or workmanship. Drawer locks are covered independently by the lock manufacturer's warranty.

TruckVault warrants to the original purchaser that it will, at its option, either repair without charge only the items listed in this warranty, or replace the original drawer system with a drawer system of equal value or model, based on current models availability. This warranty specifically excludes damage due to accidents, misuse, alterations, improper installation, or lack of proper care and maintenance as listed in this warranty.

YOUR TRUCKVAULT SECURE STORAGE SYSTEM comes with a limited lifetime warranty (excluding All-Weather Line models). TruckVault warrants you, the original product purchaser, that for as long as you own your drawer system, so long as it is installed properly and utilized in the manner of its intent, it will be free from defects resulting from inferior materials and/or workmanship.

TRUCKVAULT WARRANTS to the original purchaser that it will, at its option, either repair without charge only the items listed in this warranty or replace the original TruckVault Secure Storage System with a drawer system of equal value or model, based on current model availability. This warranty specifically excludes damage due to accidents, misuse, alterations, improper installation, or lack of proper care and maintenance as listed in this warranty.

ALL REPAIRS shall be performed by TruckVault or any authorized TruckVault distributorship only upon receipt of permission from the TruckVault Service Manager at TruckVault Headquarters. TruckVault does not authorize any person to create on its behalf any obligation with respect to the drawer system except as provided in this limited lifetime warranty.

WARRANTY GUIDELINES

- 01 //** This warranty does not apply to other accessories or equipment installed by anyone.
- 02 //** This warranty does not apply to damage due to accidents, misuse, off-road driving, alterations, acid rain, airborne fallout (chemical, tree sap, etc.), salt, road hazards, hail, windstorms, floods and other natural disasters, lack of proper care, and maintenance or normal wear and tear. Minor abrasion of paint on truck beds and elsewhere where the TruckVault contacts the truck is considered normal wear and tear.
- 03 //** This warranty does not apply to an improperly installed TruckVault Secure Storage System.
- 04 //** This warranty does not apply to damage resulting from using any drawer system without cover (unless All-Weather build) or without being enclosed in vehicle.
- 05 //** Drawer locks are covered independently by the lock manufacturer's warranty. Locks are warranted for one year by the lock manufacturer.

CONTACT US

T1 // PUBLIC SAFETY TERRITORY ONE: West Coast
[Lisa Herrera: LisaH@TruckVault.com](mailto:LisaH@TruckVault.com)

T2 // PUBLIC SAFETY TERRITORY TWO: Midwest
[Sam Robinson: SamR@TruckVault.com](mailto:SamR@TruckVault.com)

T3 // PUBLIC SAFETY TERRITORY THREE: North East
[Mike Dopsovic: MikeD@TruckVault.com](mailto:MikeD@TruckVault.com)

T4 // PUBLIC SAFETY TERRITORY FOUR: South East
[Shane Branham: ShaneB@TruckVault.com](mailto:ShaneB@TruckVault.com)

DIRECT RETAIL SALES: Retail Sales Representative
[Rochelle Maywald: RochelleM@TruckVault.com](mailto:RochelleM@TruckVault.com)

TRUCKVAULT VIRGINIA

777 Industrial Park Rd
Mt. Jackson, VA 22842

TRUCKVAULT WASHINGTON

315 Township Street
Sedro-Woolley, WA 98284

Fax: (360) 855-2239
Toll Free: 800-967-8107
www.truckvault.com



<
**CONSULT WITH
A DESIGN PRO**







QUALITY THAT'S BUILT TO LAST.

Web : truckvault.com

Toll Free : 800.967.8107

Local : 360.855.0464

TruckVault Virginia

—

777 Industrial Park Rd.
Mt. Jackson, VA
22842

TruckVault Washington

—

315 Township St.
Sedro-Woolley, WA
98284