

TCEC Season 22 SuperFinal: Komodo Dragon vs Stockfish

GM Matthew Sadler

Although the TCEC runs many exciting events, the high point of the season is still the SuperFinal, a 100-game match (50 double rounds using 50 opening positions) between the best two engines from Division P. This time, mighty Stockfish faced a new challenger, as Komodo Dragon outperformed Leela to claim a deserved second place. The prognosis for Komodo Dragon was fairly pessimistic, but that's true of any engine facing Stockfish at the moment! Such is the all-round strength of Stockfish's game that it was hard to see where Komodo Dragon's advantages might lie. However, Komodo Dragon's strength in initiative-rich positions made it likely that it would score a number of wins in the riskier positions in this TCEC book of which there were quite a few!

As it turned out, Stockfish put in a stellar performance, winning the match by 59.5 to 40.5, winning 28 games to Komodo's 9, and winning 19 game pairs and losing none! Komodo played some great games, but struggled at times to make an impression as White in the less unbalanced openings. Blocked positions also caused some problems with Stockfish scoring a series of fine manoeuvring wins. However, despite the one-sided result, it was still a wonderfully entertaining SuFi for which great credit goes to both groups of developers. Fond of Leela as we all are, it was also a refreshing change to follow this huge match at long time controls with a new protagonist!

Once again the SuperFinal book was created by Jeroen Noomen and myself, each of us supplying 25 openings. Looking back, I think Jeroen judged the sharpness of his openings somewhat better than I did, which logically explains his score of 11–8 in decisive game pairs (1.5–0.5 results). I'm ex-

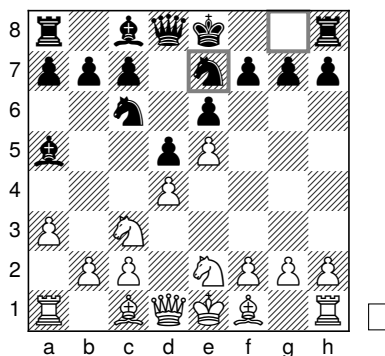
tremely fortunate to do the book together with Jeroen: whenever one of my openings doesn't work out, I always know that Jeroen's next opening is there to compensate!

Thanks to the whole TCEC crew (admins, mods, organisers, and sponsor!) for another flawless watching experience, and also to the TCEC mob (the chatters) for their enthusiasm throughout the whole event!

Enough chat, time for the games!

Games 1–2 French, Winawer (C15)

Book moves (Matthew): 1. e4 e6 2. d4 d5 3. ♖c3 ♙b4 4. ♗e2 ♗c6 5. a3 ♘a5 6. e5 ♗ge7



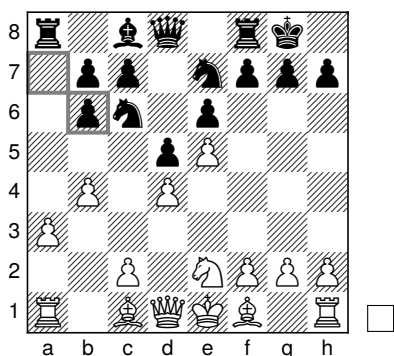
Book exit

Komodo Dragon—Stockfish 0.5–0.5

Komodo played the first two moves out of book fairly quickly, but spent 8 minutes on its 9th move which was a surprise to me. 9.c3 had been its inveterate choice and had led to a win in one of my long time control (LTC) SuFi engine matches

Edited by S. Kiminki (3rd May 2022)

between Komodo 2.6 and the Stockfish of 22nd January 2022 (running on 14 threads with a time control of 150m+15s). After **9. ♖×b6 a×b6...**

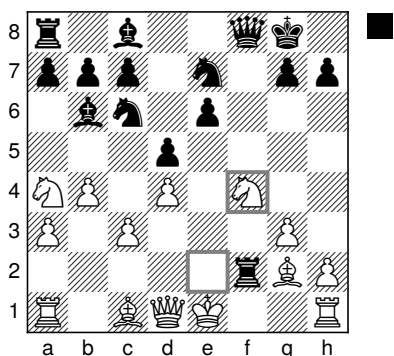


Komodo Dragon—Stockfish after 9... a7×b6

...the dynamism seemed to seep out of the white position, and Komodo was left with a slightly better structure, but no way to exploit it. The game lasted a long time, but the draw was never in doubt.

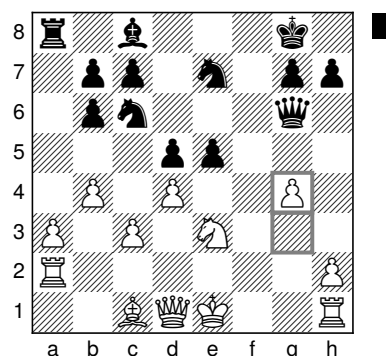
Stockfish—Komodo Dragon 1–0

I feared for Komodo's prospects as Black, as this variation had scored well for White in my engine matches. And indeed, Komodo seemed to stumble into an exchange sacrifice that I found extremely hard to assess.



Stockfish—Komodo Dragon after 13. ♖e2–f4

The weakness of White's light squares all over the board gave me hope for the glorious activation of Black's problem French bishop on c8 after **14... e5**. However, the fantastic **18. g4...**



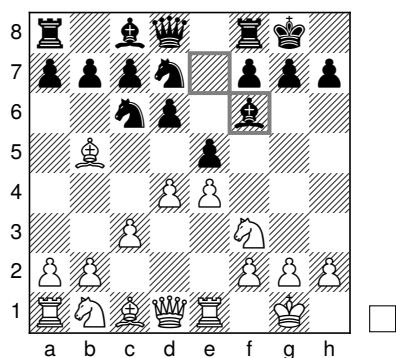
Stockfish—Komodo Dragon after 18. g3–g4

...sacrificed a pawn to block the bishop's development. Black got two pawns for the exchange, but experienced difficulties in finding a follow-up plan, and this seemed to equate to a substantial advantage for White (+1.64 for Stockfish on move 19). Stockfish made the conversion process look very easy.

Engine	Pair score	Current score	Pair wins
Komodo Dragon	0.5 (+0=1 -1)	0.5 (+0)	0
Stockfish	1.5 (+1=1 -0)	1.5 (+1)	1
Pair result	Decisive pair		
Book score	Matthew–Jeroen 1–0		
Game links:	https://tcec-chess.com/#div=sf&game=1&season=22 https://tcec-chess.com/#div=sf&game=2&season=22		

Games 3–4 Ruy Lopez, Berlin defence (C65)

Book moves (Jeroen): **1. e4 e5 2. ♖f3 ♖c6 3. ♗b5 ♗f6 4. d3 d6 5. O-O ♗e7 6. ♚e1 O-O 7. c3 ♖d7 8. d4 ♗f6**



Book exit

Engine	Pair score	Current score	Pair wins
Komodo Dragon	0.5 (+0 =1 -1)	1 (+0)	0
Stockfish	1.5 (+1 =1 -0)	3 (+2)	2
Pair result	Decisive pair		
Book score	Matthew–Jeroen 1–1		

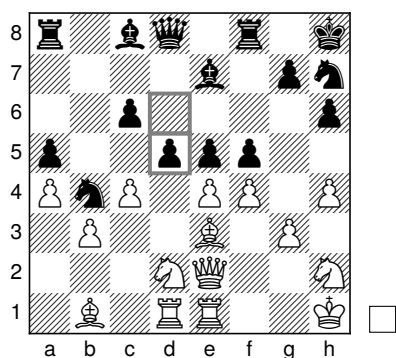
Game links:
<https://tcec-chess.com/#div=sf&game=3&season=22>
<https://tcec-chess.com/#div=sf&game=4&season=22>

Komodo Dragon—Stockfish 0.5–0.5

A somewhat sleepy opening never really caught fire, as Stockfish endured a persistent space disadvantage for 116 moves, eventually holding a draw without having really looked in danger.

Stockfish—Komodo Dragon 1–0

This time the opening burst into life with a bewildering array of possible captures in the centre at move 26.

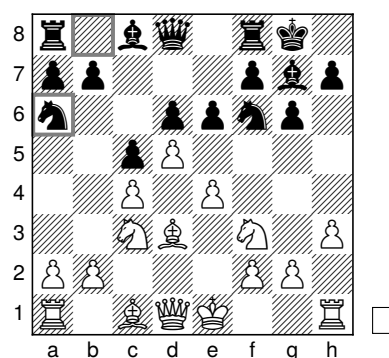


Stockfish—Komodo Dragon after 26... d6–d5

Komodo seemed to choose the wrong one (27... exf4), and Stockfish made no mistake in the smooth conversion of a technical endgame with an extra exchange.

Games 5–6 Delayed Benoni (E10)

Book moves (Matthew): 1. d4 ♖f6 2. c4 e6 3. ♗f3 c5 4. d5 d6 5. ♗c3 g6 6. e4 ♙g7 7. h3 O-O 8. ♙d3 ♗a6

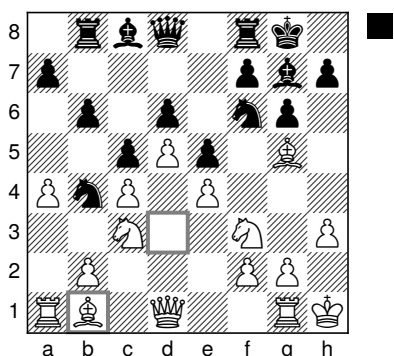


Book exit

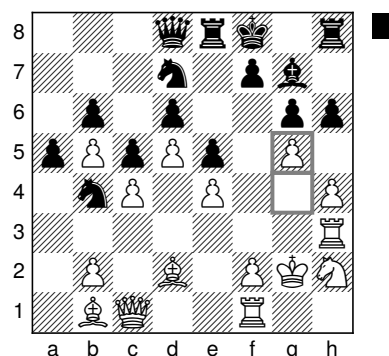
Komodo Dragon—Stockfish 0.5–0.5

This opening was taken from the fine book *The Modernized Delayed Benoni* by GM Ivan Ivanišević (Thinkers Publishing).

Although engines assess these positions very optimistically as White, Ivanišević is a persuasive advocate for Black's chances in these complex positions, and indeed, Komodo achieved little as White. I had a bit of banter with Komodo fan Martin van Essen during the game about Stockfish's positioning of the knight on b4...

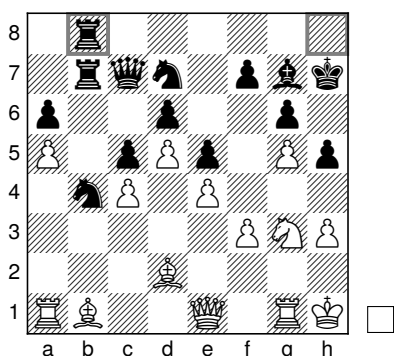


Komodo Dragon—Stockfish after 15. ♕d3–b1



Stockfish—Komodo Dragon after 29. g4–g5

...which I considered to be a serious positional mistake. In this game Stockfish managed to combine it with doubled rooks on the b-file...



Komodo Dragon—Stockfish after 41... ♖h8–b8

...after which the knight did indeed exert some awkward cramping influence on White's bishop on b1 and rook on a1. In the next game however...

...Komodo Dragon played the inexplicable 29... h×g5 opening lines on the kingside and gifting Stockfish an easy win. Despite a Leela evaluation of +1.8, I was fairly sure that the position after 29... h5 was drawn, and I took a close look at this moment in the video link below. After 29... h×g5, Stockfish took its time but finished off the game easily. This time the knight on b4 was indeed hopelessly isolated from the rest of Black's forces, so I think we'll call that particular contest between Martin and me a draw!

Engine	Pair score	Current score	Pair wins
Komodo Dragon	0.5 (+0 =1 -1)	1.5 (+0)	0
Stockfish	1.5 (+1 =1 -0)	4.5 (+3)	3
Pair result	Decisive pair		
Book score	Matthew–Jeroen 2–1		

Game links:

<https://tcec-chess.com/#div=sf&game=5&season=22>

<https://tcec-chess.com/#div=sf&game=6&season=22>

Video link:

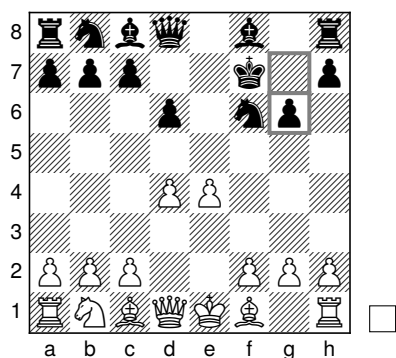
<https://youtu.be/nqvOmHKd4dA>

Stockfish—Komodo Dragon 1–0

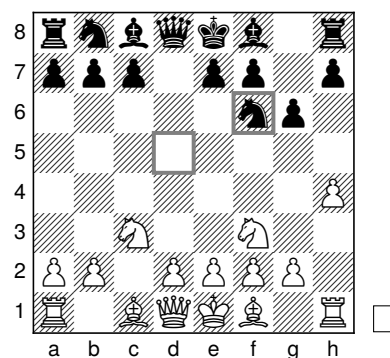
Stockfish had won a thrilling game in this line in my engine matches, so I was hoping for something similar. But here also the play became quite attritional until...

Games 7–8 Cochrane Gambit (C42)

Book moves (Jeroen): 1. e4 e5 2. ♘f3 ♘f6 3. ♘xe5 d6 4. ♘xf7 ♗xf7 5. d4 g6



Book exit



Book exit

Komodo Dragon—Stockfish 0.5–0.5
Stockfish—Komodo Dragon 0.5–0.5

This featured a crazy and romantic opening—4. ♖×f7 against the Petroff—followed by a slightly second-rate Black move 5... g6 to soften White’s disadvantage. Unfortunately, neither game really caught fire, as both sides surprisingly made little headway as Black with a material advantage of knight for two central-ish pawns on e-file and f-file.

Engine	Pair score	Current score	Pair wins
Komodo Dragon	1 (+0 =2 -0)	2.5 (+0)	0
Stockfish	1 (+0 =2 -0)	5.5 (+3)	3
Pair result	Double draw		
Book score	Matthew–Jeroen 2–1		
Game links:			
https://tcec-chess.com/#div=sf&game=7&season=22			
https://tcec-chess.com/#div=sf&game=8&season=22			

Games 9–10 English Opening (A16)

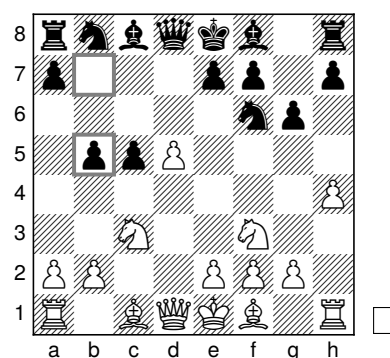
Book moves (Matthew): 1. c4 ♖f6 2. ♖c3 g6 3. ♖f3 d5 4. c×d5 ♖×d5 5. h4 ♖f6

Komodo Dragon—Stockfish 1–0

This opening was a reasonably good candidate for a reverse kill, as all the engines hate Black’s position after 5... ♖f6. White scored very well in my engine matches, but Black seemed to have a wide variety of plans (passive and active), so it seemed a decent choice. Stockfish went for an attritional defensive approach, waiting on the back three ranks for Komodo to approach. Komodo played a smooth game, increasing its advantage steadily until Black’s position collapsed. A welcome first win for Komodo!

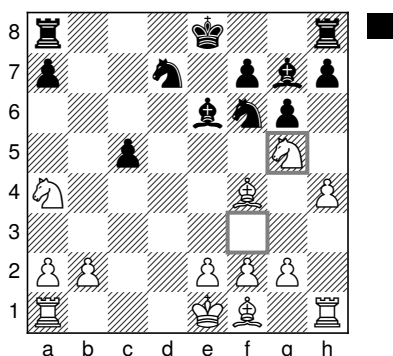
Stockfish—Komodo Dragon 1–0

Komodo went for a completely different approach, sacrificing a pawn quickly with 6... c5 and 7... b5.



Stockfish—Komodo Dragon after 7... b7–b5

The game followed engine matches of both Jeroen and myself up to 14. ♖g5. Move 14. e3 had been played in both my and Jeroen’s games.



Stockfish—Komodo Dragon after 14. ♖f3–g5

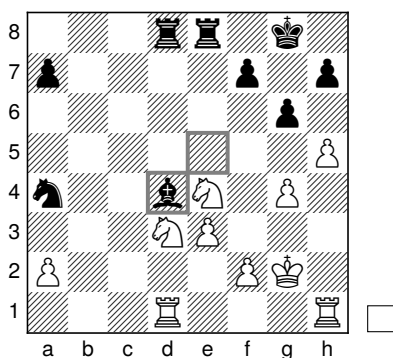
Engine	Pair score	Current score	Pair wins
Komodo Dragon	1 (+1 =0 -1)	3.5 (+1)	0
Stockfish	1 (+1 =0 -1)	6.5 (+4)	3
Pair result	Reverse kill		
Book score	Matthew–Jeroen 2–1		

Game links:
<https://tcec-chess.com/#div=sf&game=9&season=22>
<https://tcec-chess.com/#div=sf&game=10&season=22>

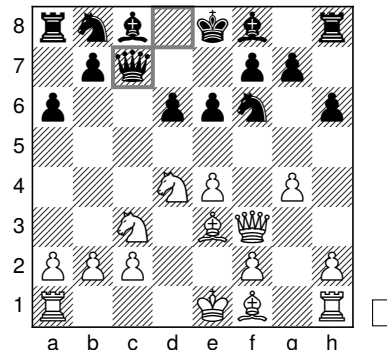
In principle, Black was a clear pawn down but with some activity along the h8–a1 diagonal and on the open files. We saw Leela hold many pawn-down endings against rofChade in the InfraFinal; this wasn't as clear as those, but it clearly required some great technique from White. Stockfish's evaluation wobbled up and down for a number of moves between 1.4 and 1.8. But after 25... ♔g7 (instead of the spectacular 25... ♔d4...

Games 11–12 Sicilian, Najdorf (B90)

Book moves (Jeroen): 1. e4 c5 2. ♖f3 d6 3. d4 cxd4 4. ♗xd4 ♗f6 5. ♗c3 a6 6. ♕e3 e6 7. g4 h6 8. ♖f3 ♖c7



Stockfish—Komodo Dragon after 25... ♔e5–d4 (variation). Stockfish's primary variation was 26. ♖f3 ♗xe4 27. ♗xe4 ♗c3+ 28. ♗f4 ♗xd1 29. ♗xd1 ♔f6 evaluated as 1.43.

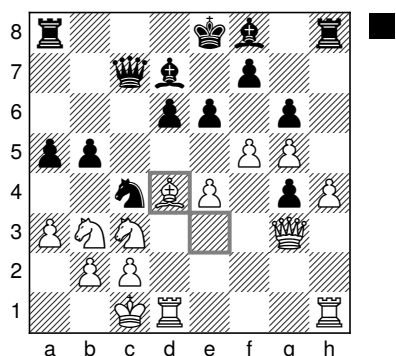


Book exit

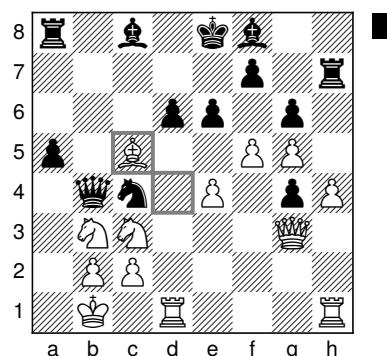
Komodo Dragon—Stockfish 0.5–0.5

Leela's initial reaction to the opening was quite muted, but its evaluation grew as the opening progressed as did Komodo's and Stockfish's. Komodo's concept around the 18th and 19th moves seems to have been incorrect...

...that Stockfish was expecting), the evaluation jumped above +2 and the writing was on the wall.



Komodo Dragon—Stockfish after 19. ♕e3–d4



Stockfish—Komodo Dragon after 22. ♕d4–c5

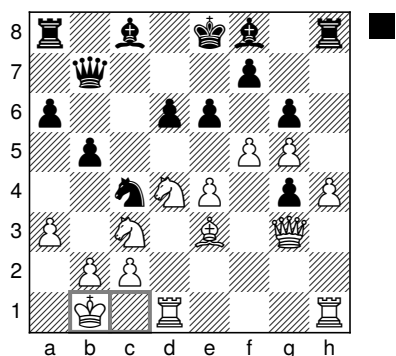
...though the game looked extraordinarily complicated. However, Stockfish navigated the craziness to steer the game into a sharp but balanced endgame.

...after which Black simply had nowhere to go and nothing to do!

Stockfish—Komodo Dragon 1–0

This game followed the previous one with Komodo first to vary with 17... ♖b7, seemingly increasing the speed of its counterplay by threatening a quick ...b4. However, Stockfish's consolidating move 18. ♖b1...

Engine	Pair score	Current score	Pair wins
Komodo Dragon	0.5 (+0=1 -1)	4 (+1)	0
Stockfish	1.5 (+1=1 -0)	8 (+5)	4
Pair result	Decisive pair		
Book score	Matthew–Jeroen 2–2		
Game links:			
https://tcec-chess.com/#div=sf&game=11&season=22			
https://tcec-chess.com/#div=sf&game=12&season=22			

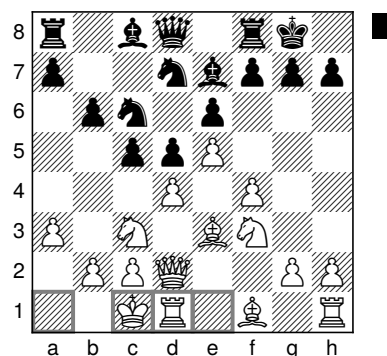


Stockfish—Komodo Dragon after 18. ♖c1–b1

...was not anticipated by any other engine. After this move, it emerged that Black's counterplay with 18... b4 could be beaten back with the help of some deft tactics (22. ♕c5!! was particularly fine)...

Games 13–14 French, Steinitz (C11)

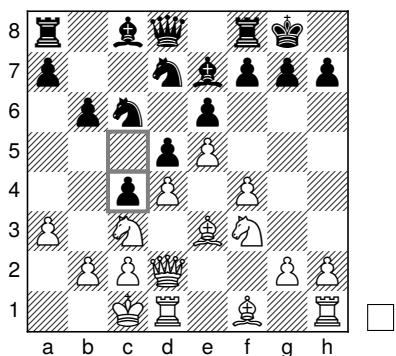
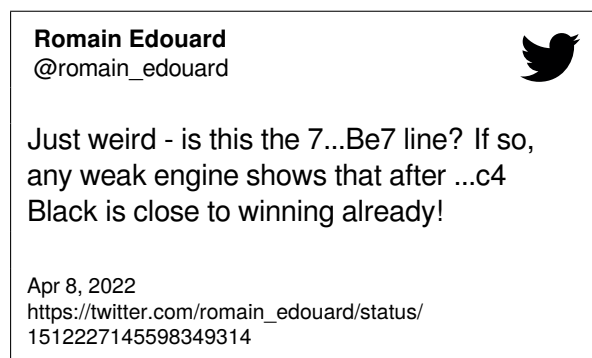
Book moves (Matthew): 1. e4 e6 2. d4 d5 3. ♖c3 ♗f6 4. e5 ♗fd7 5. f4 c5 6. ♗f3 ♗c6 7. ♕e3 ♕e7 8. a3 O-O 9. ♖d2 b6 10. O-O-O



Book exit

Komodo Dragon—Stockfish 0.5–0.5

This opening was a definite candidate for a reverse kill! It features a well-known—but frequently played—blunder from White in various lines of the Steinitz French. While Black still has the option of ...c4 closing the centre and preparing a queenside pawn storm with ...b5, White should never castle queenside. I spent some time looking for a line that wasn't a complete disaster for White, and I came up with a line where Black had already played ...b6. That means that the Black counterplay is a move slower. It's still unbelievably fraught for White as a tweet from a fellow GM shows:

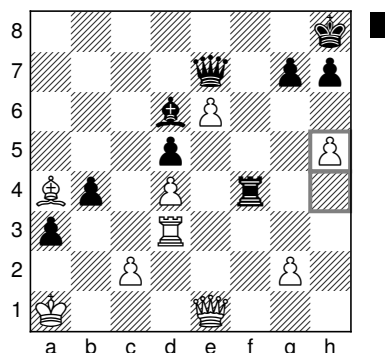


Komodo Dragon—Stockfish after 10... c5–c4

Amazingly, the engines followed some of my own engine matches for a considerable period. This game followed one of my Stockfish-Komodo Dragon 2.5 games (yes, Komodo as Black) up to 31... ♗d6! Komodo played 31... ♗d6 in my engine match and eventually drew. I was playing a 480m+30s time control in that match to try and

get a bit closer to TCEC node levels! I also had a Leela vs Stockfish game where White deviated on move 28 (28. ♖e3 instead of 28. ♗d3), and Leela lost.

In this game Stockfish came really close to winning, and indeed, on move 38 Komodo seems to have spotted a win that Stockfish missed.



Komodo Dragon—Stockfish after 38.h4–h5. Komodo evaluated the position as -2.74 expecting 38... ♖f6, but Stockfish played 38... ♗e4 with an evaluation of -1.29.

A post on TalkChess analyses the position after Komodo's suggested 38... ♖f6,¹ and Stockfish Discord also seemed to be of the same opinion!²

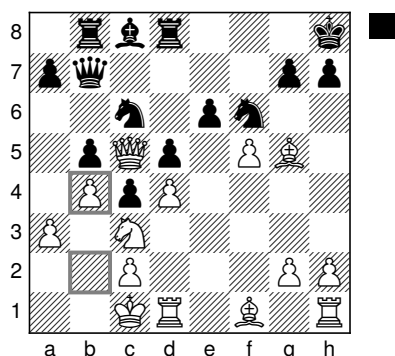
After this missed chance, Dragon held the draw and had a chance for a game pair win in the second game!

Stockfish—Komodo Dragon 0.5–0.5

The second game followed one of my Komodo Dragon–Stockfish engine matches (again reversed colours!) game until move 21 when Stockfish unveiled the startling defence 21. b4!

¹<https://talkchess.com/forum3/viewtopic.php?t=79657>

²<https://discord.com/channels/435943710472011776/735707599353151579/961796150996906004>



Stockfish—Komodo Dragon after 21. b2–b4

It looked all wrong to move the pawns in front of the king when it was being attacked, but Stockfish found a defensive structure to keep the Black pieces at bay, and ended up drawing very comfortably! A total shock for me: two draws was the last thing I expected!

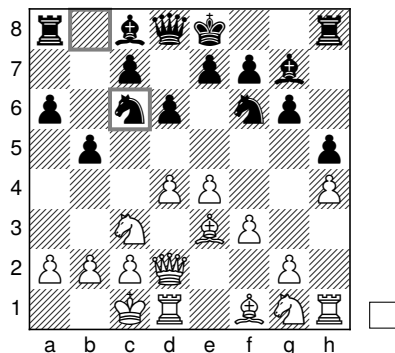
Engine	Pair score	Current score	Pair wins
Komodo Dragon	1 (+0 =2 -0)	5 (+1)	0
Stockfish	1 (+0 =2 -0)	9 (+5)	4
Pair result	Double draw		
Book score	Matthew–Jeroen 2–2		

Game links:

<https://tcec-chess.com/#div=sf&game=13&season=22>
<https://tcec-chess.com/#div=sf&game=14&season=22>

Games 15–16 Modern defence (B06)

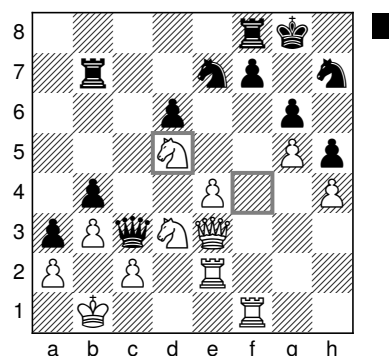
Book moves (Jeroen): 1. e4 g6 2. d4 ♘g7 3. ♘c3 d6 4. ♗e3 a6 5. ♖d2 b5 6. h4 h5 7. f3 ♘f6 8. O-O-O ♘c6



Book exit

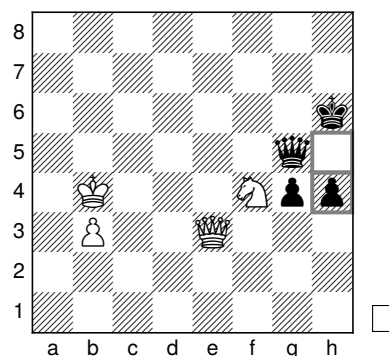
Komodo Dragon—Stockfish 1–0

Featuring one of Jeroen’s favourite setups against the Modern, Stockfish couldn’t avoid landing in a passive position. This felt quite reminiscent of game 9 where Komodo had scored its first win by squeezing a counterplay-deprived Stockfish into submission. When Komodo initiated play with 36. ♘d5, however...



Komodo Dragon—Stockfish after 36. ♘f4–d5

...it set the scene for an extraordinary passage of play in which Komodo steadfastly believed in its advantage, Stockfish and kibitzing Leela didn’t, and Stockfish Classical had periods of doubt before becoming a fervent supporter of Komodo’s play! The ending with queen, knight, and pawns against queen and two connected passed pawns...



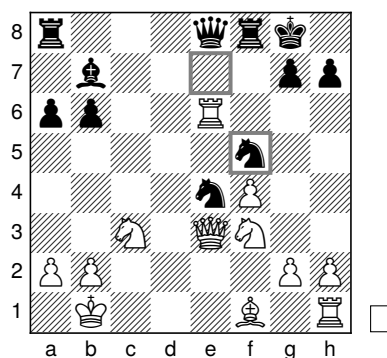
Komodo Dragon—Stockfish after 69... h5–h4

...was extraordinarily intricate, but Komodo came through for a fantastic win!

Stockfish—Komodo Dragon 1–0

After that amazing win which created so much excitement in the chat, the reverse was a little flat. Stockfish built up its strong opening position into a decisive advantage without Komodo being able to offer prolonged resistance.

Engine	Pair score	Current score	Pair wins
Komodo Dragon	1 (+1 =0 -1)	6 (+2)	0
Stockfish	1 (+1 =0 -1)	10 (+6)	4
Pair result	Reverse kill		
Book score	Matthew–Jeroen 2–2		
Game links:			
https://tcec-chess.com/#div=sf&game=15&season=22			
https://tcec-chess.com/#div=sf&game=16&season=22			

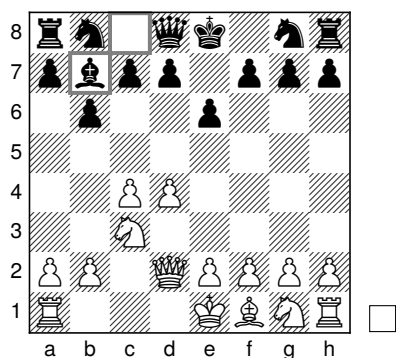


Komodo Dragon—Stockfish after 17... ♖e7-f5

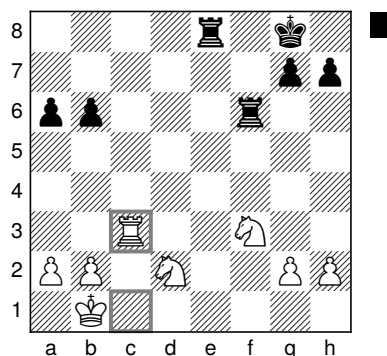
The game moved almost by force to a rook and two knights vs two rooks ending Stockfish had envisaged already on move 9(!)

Games 17–18 Irregular (A40)

Book moves (Matthew): 1. d4 e6 2. c4 ♘b4+ 3. ♘d2 ♘×d2+ 4. ♖×d2 b6 5. ♗c3 ♘b7



Book exit



Komodo Dragon—Stockfish after 24. ♖c1-c3

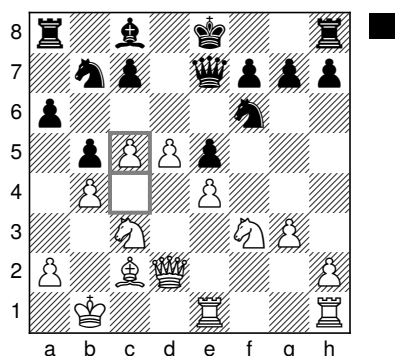
Stockfish held the ending without any problems.

Komodo Dragon—Stockfish 0.5–0.5

This opening was intended as a homage to the late, great legend of English chess GM Tony Miles, and Stockfish certainly did him proud in this game, finding a way to generate enormous complications from a position compressed to the back three ranks.

Stockfish—Komodo Dragon 1–0

Just as in the previous pair, this was another somewhat flat game as Black by Komodo after a super first game. Black never seemed to settle on exactly where its king should go, and the manoeuvre ... ♗c6-e5-d7-c5-b7 was as damaging as it was time-consuming...



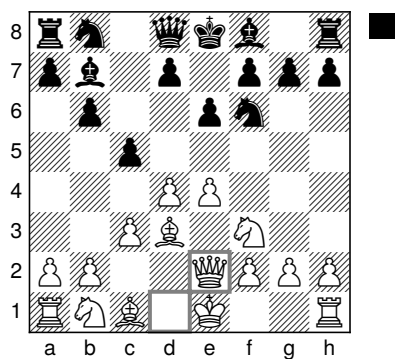
Stockfish—Komodo Dragon after 19. c4–c5

...giving Stockfish a fairly routine win as White.

Engine	Pair score	Current score	Pair wins
Komodo Dragon	0.5 (+0=1-1)	6.5 (+2)	0
Stockfish	1.5 (+1=1-0)	11.5 (+7)	5
Pair result	Decisive pair		
Book score	Matthew–Jeroen 3–2		
Game links:			
https://tcec-chess.com/#div=sf&game=17&season=22			
https://tcec-chess.com/#div=sf&game=18&season=22			

Games 19–20 Owen’s Defence (B00)

Book moves (Jeroen): 1. e4 b6 2. d4 ♖b7 3. ♙d3 e6 4. ♘f3 c5 5. c3 ♘f6 6. ♚e2



Book exit

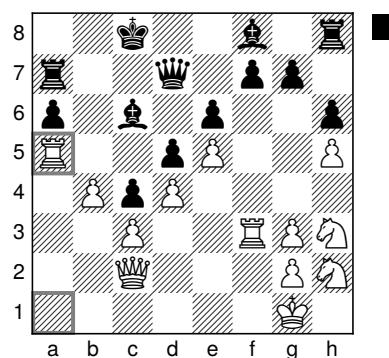
Komodo Dragon—Stockfish 0.5–0.5

Stockfish handled the black side of this opening in a superb manner: rapid queenside play with ...c5-c4 and ...b5-b4 to elicit a concession from White,

followed up with a patient waiting game, holding the black kingside pieces on their starting squares until White commits itself. It was so impressive I dedicated a 40-minute video to it! (See below.)

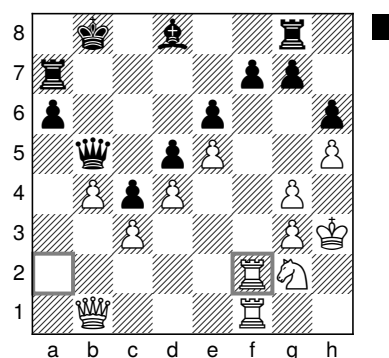
Stockfish—Komodo Dragon 1–0

Once again, Stockfish demonstrated a superiority in manoeuvring in closed positions. The plan from this position of playing a white knight to a4...



Stockfish—Komodo Dragon after 30. ♖a1×a5

...threatening ♘c5 and forcing Black to exchange it off with its light-squared bishop after which f7 required the defence of all Black’s major pieces...



Stockfish—Komodo Dragon after 52. ♖a2–f2

...was a lovely bit of strategy! Stockfish broke through decisively when Komodo lost patience and weakened its kingside with 60... g×h5.

Engine	Pair score	Current score	Pair wins
Komodo Dragon	0.5 (+0 =1 -1)	7 (+2)	0
Stockfish	1.5 (+1 =1 -0)	13 (+8)	6
Pair result	Decisive pair		
Book score	Matthew–Jeroen 3–3		

Game links:

<https://tcec-chess.com/#div=sf&game=19&season=22>

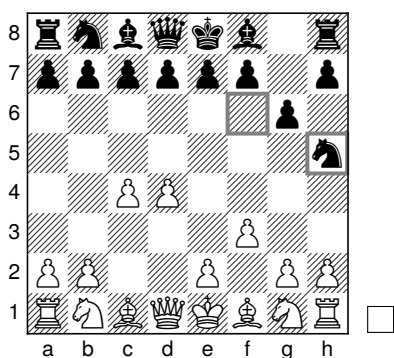
<https://tcec-chess.com/#div=sf&game=20&season=22>

Video link:

<https://youtu.be/FUXQzZ9pdyM>

Games 21–22 King’s Indian Defence (E60)

Book moves (Matthew): **1. d4 ♘f6 2. c4 g6 3. f3 ♗h5**



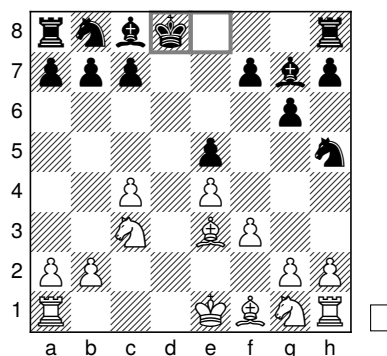
Book exit

Komodo Dragon—Stockfish 0.5–0.5

This opening was an interesting sideline against the topical anti-Grünfeld system: **3... ♗h5!?** The book exits weren’t amazingly high on this one, but White did win quite a few games in my engine matches, so I thought it was worth a try. Komodo’s attempt with White was a little disappointing, allowing a quick exchange of knights (which in general should relieve White’s position) and not really posing Stockfish any concrete early problems. Stockfish sacrificed the exchange to hurry the position along to a draw.

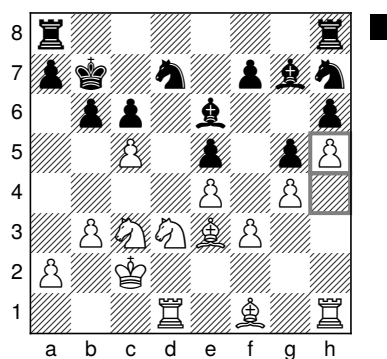
Stockfish—Komodo Dragon 1–0

An amazing game. As Black, Komodo gave Stockfish an early opportunity to exchange queens and damage Black’s castling rights.



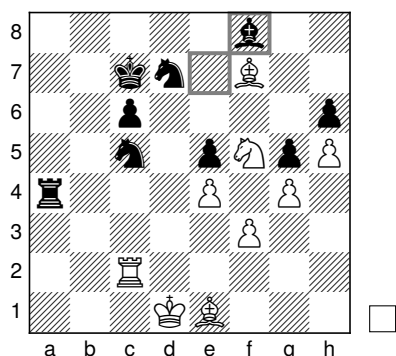
Stockfish—Komodo Dragon after 8... ♙e8xd8

The resulting queenless middlegame was better for White, but Komodo was expected to hold it. A small, unobvious mistake from Komodo moved Stockfish’s evaluation from 0.9–1.0 to 1.3, allowing Stockfish to fix the black h6-pawn as a future target with h5 and also prevent Black from destabilising the kingside pawn structure itself with ...h5.

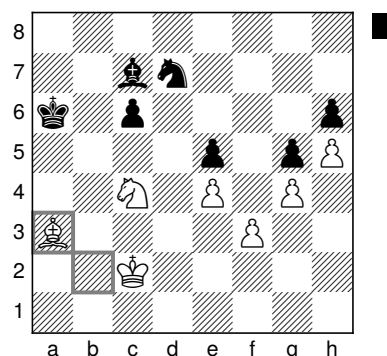


Stockfish—Komodo Dragon after 20. h4–h5

Some concrete play on the queenside brought Black to an endgame with shattered pawns but reduced material.



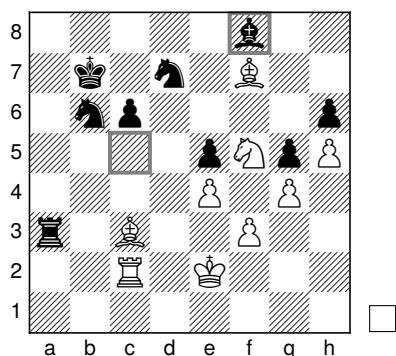
Stockfish—Komodo Dragon after 45... ♖e7–f8



Stockfish—Komodo Dragon after 66. ♖b2–a3

It was the sort of static disadvantage position which humans find hard to defend for long periods but that engines sometimes manage to defend grimly for hundreds of moves. However, after quite a bit of analysis (see the video link below) I suspect that Stockfish (and only Stockfish!) was already winning! With the aid of some subtle manoeuvring, Stockfish managed to displace the black knights from their ideal c5 and d7 configuration to b6 and d7.

To be honest, the realisation was far from obvious. Clearly zugzwang would play a part in driving the black king back and allowing the white king to invade, but where and how? Astonishingly, Stockfish had seen the correct method from a vast distance and executed it flawlessly, turning this game into an instant SuFi classic! One of the greatest technical achievements I have seen, perhaps the only rival being the game in which Stockfish defeated Leela in an opposite bishop and knight endgame, which I also analysed here: <https://youtu.be/bFdN4ALTm28>



Stockfish—Komodo Dragon after 51... ♖c5–f8

The new possibility of ♖e6 (thanks to a knight no longer being on c5) allowed Stockfish to realise the exchange of bishop for knight and then exchange the pair of remaining rooks after which Stockfish was claiming a +6 advantage.

Engine	Pair score	Current score	Pair wins
Komodo Dragon	0.5 (+0=1 -1)	7.5 (+2)	0
Stockfish	1.5 (+1=1 -0)	14.5 (+9)	7

Pair result Decisive pair
Book score Matthew–Jeroen 4–3

Game links:

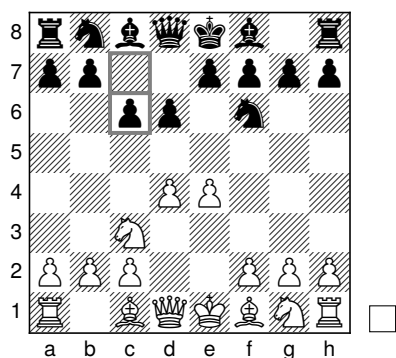
<https://tcec-chess.com/#div=sf&game=21&season=22>
<https://tcec-chess.com/#div=sf&game=22&season=22>

Video link:

<https://youtu.be/TpZiCKEbgol>

Games 23–24 Pirc, Pribyl System (B07)

Book moves (Jeroen): 1. e4 d6 2. d4 ♘f6 3. ♘c3 c6

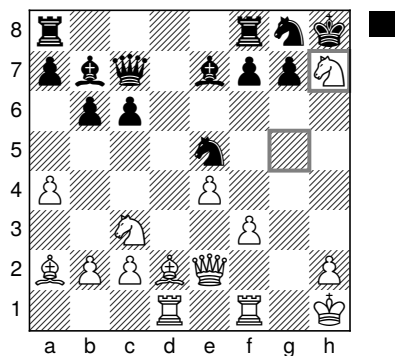


Book exit

Komodo Dragon—Stockfish 0.5–0.5

The Pribyl Pirc enjoyed quite a lot of popularity in the 1990s with English grandmasters such as Tony Miles and Julian Hodgson as regular adherents, but it is a risky venture in engine chess. The most famous TCEC game in this line is a Stockfish–Leela VVLTTC game³ which featured a brilliant attack by Stockfish and is analysed here: <https://youtu.be/PEoAesUtbOg>

Komodo started powerfully, and the startling **18. ♖×h7** seemed to crown its early efforts and usher in the process of converting its advantage.

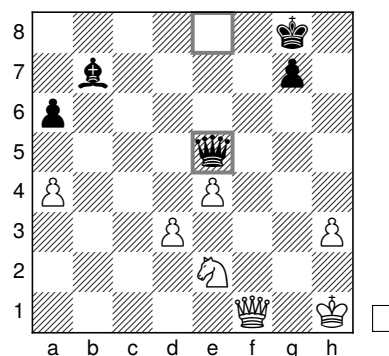


Komodo Dragon—Stockfish after 18. ♖g5×h7

However, Stockfish’s resistance was typically obdurate, and possibly, the position was not as promising as it had seemed. By the time Komodo tried some tactics, Stockfish was already at 0.00! The position Stockfish aimed for—two

³[https://tcec-chess.com/#div=vvltc&game=3&season=21; VVLTTC=very, very long time control](https://tcec-chess.com/#div=vvltc&game=3&season=21;VVLTTC=very,very%20long%20time%20control)

pawns down with a light-squared bishop restricted by central pawns on d3 and e4—was not an obvious candidate for a 0.00 evaluation...

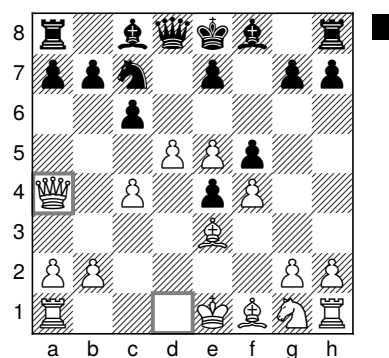


Komodo Dragon—Stockfish after 40... ♖e8×e5

...but Stockfish had seen that it would soon pick up the a-pawn and cause enough problems with its queen to keep White at bay. A real disappointment for Komodo and you feared for the reverse...

Stockfish—Komodo Dragon 1–0

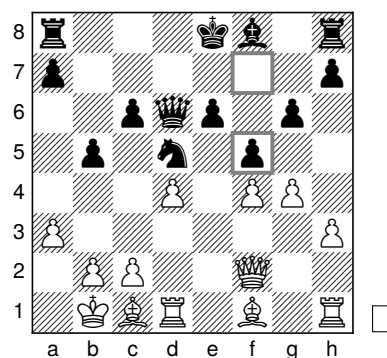
This fear turned out to be justified, as Komodo went badly wrong at an early stage: Stockfish reached +2 at move 10 already!



Stockfish—Komodo Dragon after 10. ♖d1–a4

The rest of the game was quite painful, as Stockfish relentlessly pushed home its advantage.

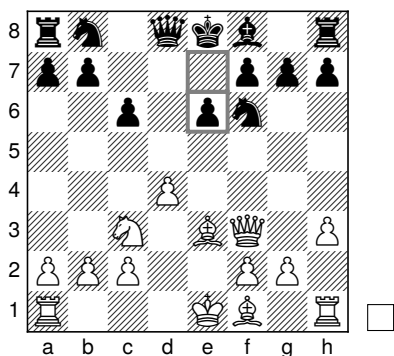
Engine	Pair score	Current score	Pair wins
Komodo Dragon	0.5 (+0 =1 -1)	8 (+2)	0
Stockfish	1.5 (+1 =1 -0)	16 (+10)	8
Pair result	Decisive pair		
Book score	Matthew–Jeroen 4–4		
Game links:			
https://tcec-chess.com/#div=sf&game=23&season=22			
https://tcec-chess.com/#div=sf&game=24&season=22			



Komodo Dragon—Stockfish after 17... f7–f5

Games 25–26 Scandinavian defence (B01)

Book moves (Matthew): **1. e4 d5 2. exd5 ♖×d5**
3. ♘c3 ♜d8 4. d4 ♘f6 5. ♗f3 ♙g4 6. h3 ♙×f3
7. ♜×f3 c6 8. ♙e3 e6



Book exit

Komodo Dragon—Stockfish 0.5–0.5

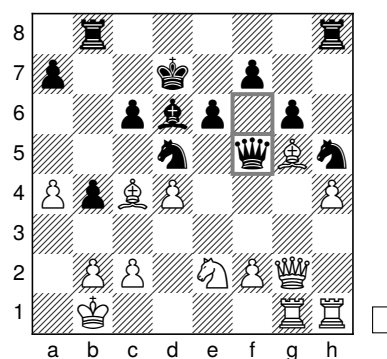
This opening was taken from the excellent book *1. e4! The Chess Bible* by the young Australian GM Justin Tan (Thinkers Publishing). Here he cited a game Harvey–Arkell played in the on-line 4NCL in 2020.⁴ The position that arose in the game after **13... ♘d5** was covered by Tan, who preferred Leela's and Stockfish's move **14. ♜d3**—which indeed looks pretty promising—to Komodo's **14. ♜g3**. Stockfish's concept in the game was pretty bold, particularly the very weakening **17... f5** to stop White from playing f5 itself.

⁴<https://lichess.org/9jbrV6Dj>

However, without knights the Black weaknesses were hard to attack, and despite Komodo's +1.02 evaluation, it was unable to make much headway.

Stockfish—Komodo Dragon 0.5–0.5

Once again Stockfish made a better go of a not-too-biased opening, and as its evaluation climbed to +1.2 and with Black's king stuck in the centre, it seemed as if Komodo might be in for a rough Sunday morning! However, a precise sequence underestimated by Stockfish, **19... ♜f6, 20... ♖d7, 21... ♜f5...**



Stockfish—Komodo Dragon after 21... ♜f6–f5

...managed to force a mass liquidation after which Komodo held the resulting pawn down endgame without any difficulties.

Engine	Pair score	Current score	Pair wins
Komodo Dragon	1 (+0 =2 -0)	9 (+2)	0
Stockfish	1 (+0 =2 -0)	17 (+10)	8
Pair result	Double draw		
Book score	Matthew–Jeroen 4–4		

Game links:

<https://tcec-chess.com/#div=sf&game=25&season=22>

<https://tcec-chess.com/#div=sf&game=26&season=22>

Video link:

<https://youtu.be/wzizVfB3Hcw>

Engine	Pair score	Current score	Pair wins
Komodo Dragon	1 (+1 =0 -1)	10 (+3)	0
Stockfish	1 (+1 =0 -1)	18 (+11)	8
Pair result	Reverse kill		
Book score	Matthew–Jeroen 4–4		

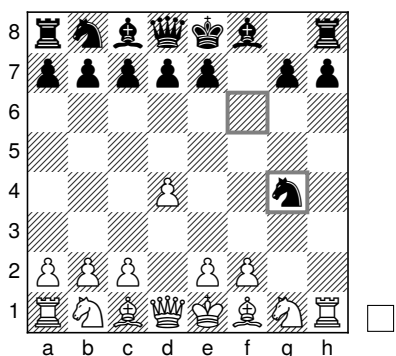
Game links:

<https://tcec-chess.com/#div=sf&game=27&season=22>

<https://tcec-chess.com/#div=sf&game=28&season=22>

Games 27–28 Dutch, Korchnoi Gambit (A80)

Book moves (Jeroen): 1. d4 f5 2. h3 ♘f6 3. g4 f×g4 4. h×g4 ♘×g4



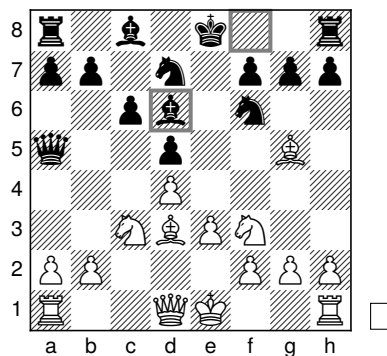
Book exit

**Komodo Dragon—Stockfish 1–0
Stockfish—Komodo Dragon 1–0**

This crazy gambit opening somehow failed to wow the engines, both hitting the emergency brake right out of the opening and giving away material to stave off the immediate disaster. Both Komodo and Stockfish managed to win without any great difficulties.

Games 29–30 Queen’s Gambit Declined, Cambridge Springs, Carlsbad (D52)

Book moves (Matthew): 1. d4 d5 2. c4 e6 3. ♘c3 ♘f6 4. ♘f3 c6 5. ♗g5 ♘bd7 6. e3 ♖a5 7. c×d5 e×d5 8. ♗d3 ♗d6



Book exit

Komodo Dragon—Stockfish 0.5–0.5

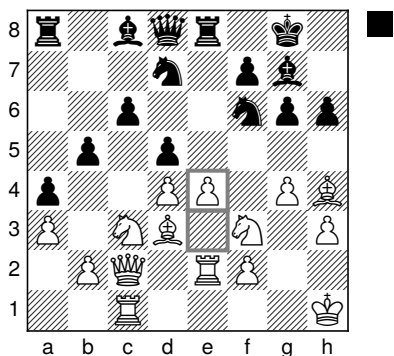
This opening had bizarrely also been chosen by the book makers of Division P! It was taken from the game Short–Andersson.⁵ Short, having tricked Ulf in the opening, commented after Black’s next move: “White has so many good moves at his disposal, it is hard to know which is best.” In Division P, Black had been under pressure in both games, but managed to hold this Queen’s Gambit Declined in which Black is essentially three tempi down! (... ♖d8–a5–d8 and ... ♗d6–e7)

⁵<https://www.chessgames.com/perl/chessgame?gid=1553063>

Komodo didn't really make much headway this time, either, eschewing any committal pawn advances and moving its pieces around its pawn structure.

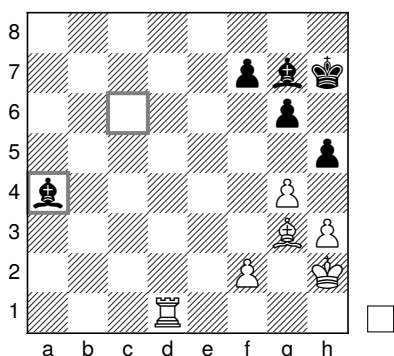
Stockfish—Komodo Dragon 1–0

Stockfish had won nearly all of its White games in this line in my engine matches, but they had all been very tough, gruelling games...and this game fitted that pattern. Stockfish seemed reluctant to undertake any concrete action, playing an enormous number of temporising king moves. But after Komodo's incautious **30... b5**, Stockfish struck in the centre with **31. e4**.



Stockfish—Komodo Dragon after 31. e3–e4

The resulting rook, bishop, and two pawns vs two bishops and two pawns (after **60. h×g4**), all on the same side, didn't look like an obvious win...



Stockfish—Komodo Dragon after 58... ♗c6×a4

...but Stockfish made it look that way to extend its lead still further!

Engine	Pair score	Current score	Pair wins
Komodo Dragon	0.5 (+0=1 -1)	10.5 (+3)	0
Stockfish	1.5 (+1=1 -0)	19.5 (+12)	9
Pair result	Decisive pair		
Book score	Matthew–Jeroen 5–4		

Game links:

<https://tcec-chess.com/#div=sf&game=29&season=22>

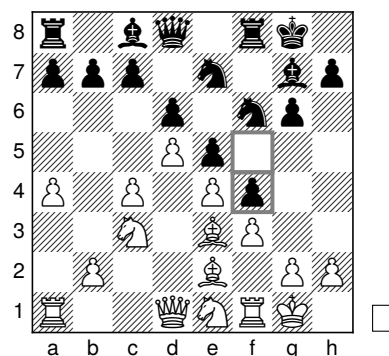
<https://tcec-chess.com/#div=sf&game=30&season=22>

Video link:

<https://youtu.be/LZVTSK2JGWk>

Games 31–32 King's Indian, Mar del Plata (E98)

Book moves (Jeroen): **1. d4 ♖f6 2. c4 g6 3. ♘c3 ♗g7 4. e4 d6 5. ♘f3 O-O 6. ♗e2 e5 7. O-O ♘c6 8. d5 ♘e7 9. ♘e1 ♘e8 10. ♗e3 f5 11. f3 ♘f6 12. a4 f4**



Book exit

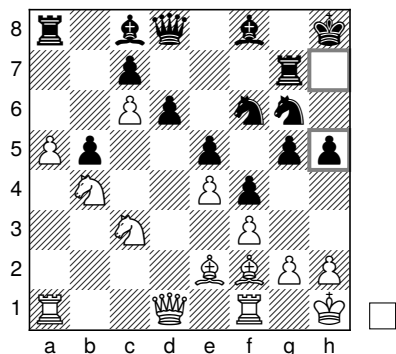
Komodo Dragon—Stockfish 0.5–0.5

As is traditional, Jeroen wheeled out one of his tweaked King's Indian Mar del Plata's, which has given us some classic games in past SuperFinals! Komodo's treatment was perhaps a little on the slow side: Stockfish got in ...g5-g4 quite quickly and never really looked in danger.

Stockfish—Komodo Dragon 0.5–0.5

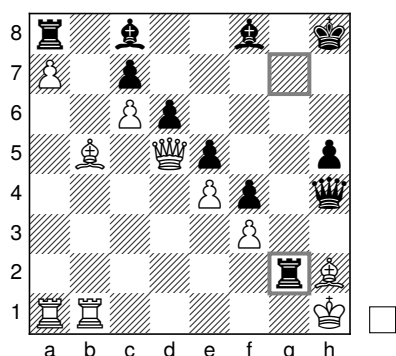
This was much more like it, as we were treated to an all-in Mar del Plata ding-dong battle! Stockfish

was very positive about its queenside chances...



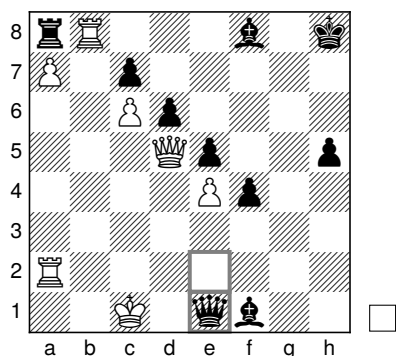
Stockfish—Komodo Dragon after 22... h7-h5

...but after Stockfish's surprising 26. ♖×d5 (26. e×d5 had been its intention for many moves and Leela's and Komodo's expectation as well), things seem to turn Komodo's way.



Stockfish—Komodo Dragon after 31... ♜g7×g2

Black's attack was dangerous, but you need more than dangerous to beat Stockfish, and the game ended in a draw by perpetual.



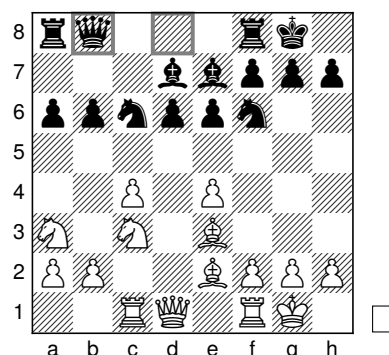
Stockfish—Komodo Dragon after 45... ♖e2-e1+

Great play from Komodo as Black, though!

Engine	Pair score	Current score	Pair wins
Komodo Dragon	1 (+0=2-0)	11.5 (+3)	0
Stockfish	1 (+0=2-0)	20.5 (+12)	9
Pair result	Double draw		
Book score	Matthew-Jeroen 5-4		
Game links:			
https://tcec-chess.com/#div=sf&game=31&season=22			
https://tcec-chess.com/#div=sf&game=32&season=22			

Games 33-34 Sicilian, Szén, Hedgehog (B44)

Book moves (Matthew): 1. e4 c5 2. ♘f3 ♘c6 3. d4 c×d4 4. ♗×d4 e6 5. ♗b5 d6 6. c4 a6 7. ♗5c3 ♗f6 8. ♕e2 ♕e7 9. O-O O-O 10. ♗a3 b6 11. ♕e3 ♕d7 12. ♖c1 ♖b8

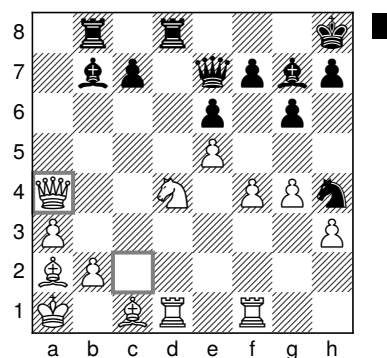


Book exit

Komodo Dragon—Stockfish 0.5-0.5 Stockfish—Komodo Dragon 0.5-0.5

One of these days I'll stop trying to make Hedgehogs work at the TCEC! Encouraged by a wild Leela-Stockfish encounter in my engine matches where Leela had thrown its kingside pawns forward with abandon, I decided to punt this lower-exit line, but neither engine was able to achieve anything serious!

Engine	Pair score	Current score	Pair wins
Komodo Dragon	1 (+0=2-0)	12.5 (+3)	0
Stockfish	1 (+0=2-0)	21.5 (+12)	9
Pair result	Double draw		
Book score	Matthew–Jeroen 5–4		
Game links:			
https://tcec-chess.com/#div=sf&game=33&season=22			
https://tcec-chess.com/#div=sf&game=34&season=22			

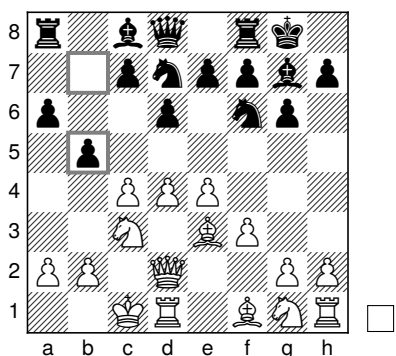


Komodo Dragon—Stockfish after 31. ♜c2xa4

However, Stockfish continued to resist, evaluations began to flatline, and Komodo’s tempting exchange sacrifice...

Games 35–36 King’s Indian, Sämisch (E81)

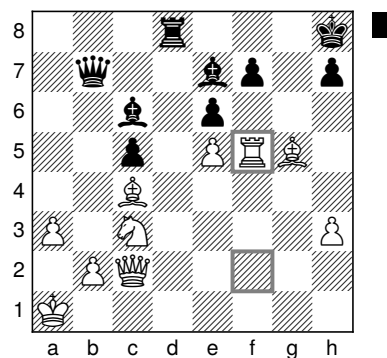
Book moves (Jeroen): 1. d4 ♘f6 2. c4 g6 3. ♘c3 ♙g7 4. e4 d6 5. f3 O-O 6. ♙e3 ♘bd7 7. ♚d2 a6 8. O-O-O b5



Book exit

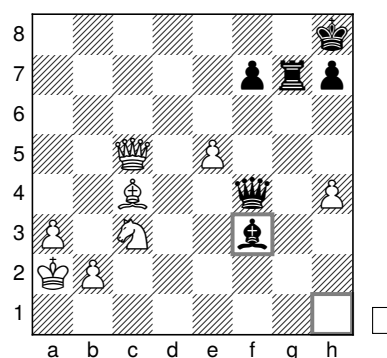
Komodo Dragon—Stockfish 0.5–0.5

I clearly wasn’t the only book maker investigating the King’s Indian Sämisch for promising SuperFinal lines: I’ve never seen this weird gambit before, and Komodo seemed to be doing a great job grinding Stockfish into dust.



Komodo Dragon—Stockfish after 41. ♜f2xf5

...turned out to be a rapid pathway to the dreaded Stockfish 0.00 evaluation!

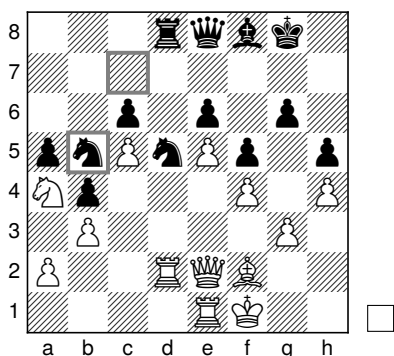


Komodo Dragon—Stockfish after 48... ♙h1-f3

Stockfish—Komodo Dragon 1–0

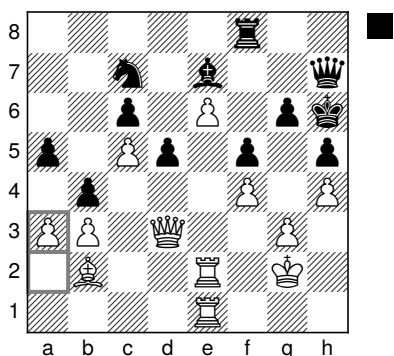
Komodo’s defence as Black was not pretty but seemed fairly effective, as it was unclear how

Stockfish would make something of its extra exchange.



Stockfish—Komodo Dragon after 31... c7xb5

It wasn't a surprise, though, when Stockfish managed!

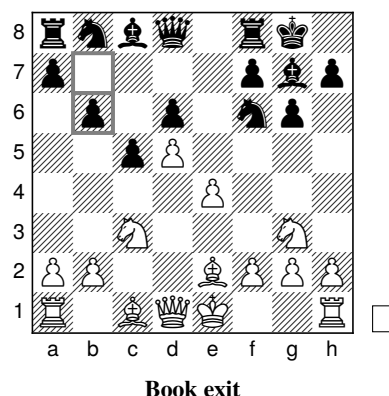


Stockfish—Komodo Dragon after 67. a2-a3

Engine	Pair score	Current score	Pair wins
Komodo Dragon	0.5 (+0=1 -1)	13 (+3)	0
Stockfish	1.5 (+1=1 -0)	23 (+13)	10
Pair result	Decisive pair		
Book score	Matthew–Jeroen 5–5		
Game links:			
https://tcec-chess.com/#div=sf&game=35&season=22			
https://tcec-chess.com/#div=sf&game=36&season=22			

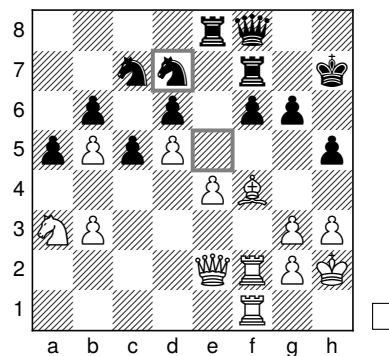
Games 37–38 Modern Benoni (A65)

Book moves (Matthew): 1. d4 f6 2. c4 c5 3. d5 e6 4. c3 exd5 5. cxd5 d6 6. e4 g6 7. ge2 g7 8. g3 O-O 9. e2 b6



Komodo Dragon—Stockfish 0.5–0.5

This opening was taken from a recent *New in Chess Yearbook* in which an opening article was dedicated to the startling continuation 10. h4 h5 11. e5. This was the main choice of both Komodo and Stockfish in my engine matches, but strangely enough, we didn't see it at all in the TCEC! Komodo played 10. a4 which it had also chosen once in my engine matches, looking to set up a queenside bind.



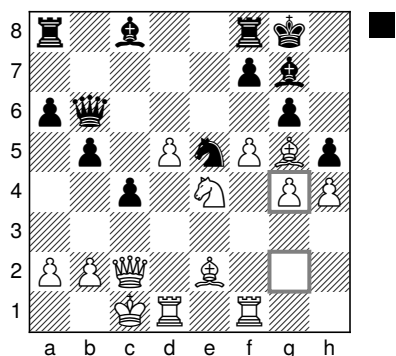
Komodo Dragon—Stockfish after 32... e5-d7

Komodo and Leela both seemed very optimistic about White's chances (Komodo was at 1.2–1.3 and Leela at around 0.6), but progress proved impossible, and Stockfish held the position with minimum fuss.

Stockfish—Komodo Dragon 0.5–0.5

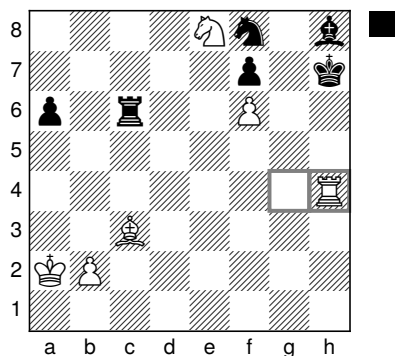
Stockfish played 10. h4 h5 but varied with 11. g5 which I hadn't seen in my games but which Jeroen

had seen in blitz games he'd run on his hardware. The game became tremendously exciting with a typical Benoni central break (**14. e5** then **15. f5**) followed up with an anything but typical queenside castling for White!



Stockfish—Komodo Dragon after 20. g2–g4

As White ripped away Black's king's cover, it seemed that Black should be in trouble. But both Stockfish and Komodo were unmoved, and Komodo's counterplay with **25... b4** and **26... b3** came in the nick of time!



Stockfish—Komodo Dragon after 51. g4–h4+

A 0.00 draw with a black dark-squared bishop buried on h8 seemed like an odd result, but that's engine chess for you sometimes.

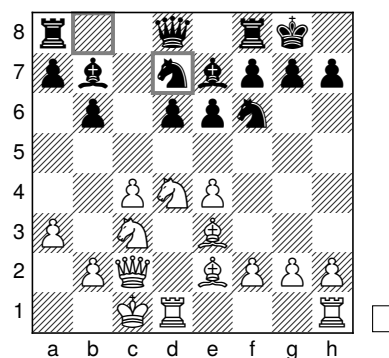
Engine	Pair score	Current score	Pair wins
Komodo Dragon	1 (+0 =2 -0)	14 (+3)	0
Stockfish	1 (+0 =2 -0)	24 (+13)	10
Pair result	Double draw		
Book score	Matthew–Jeroen 5–5		

Game links:

- <https://tcec-chess.com/#div=sf&game=37&season=22>
- <https://tcec-chess.com/#div=sf&game=38&season=22>

Games 39–40 Queen's Indian (E12)

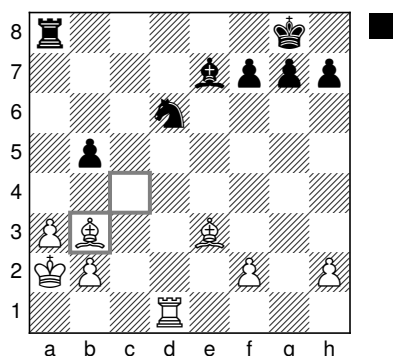
Book moves (Jeroen): **1. d4** ♖f6 **2. c4** e6 **3. ♗f3** b6 **4. a3** ♙a6 **5. ♚c2** ♙b7 **6. ♗c3** c5 **7. e4** cxd4 **8. ♗xd4** d6 **9. ♙e2** ♙e7 **10. ♙e3** O-O **11. O-O-O** ♗bd7



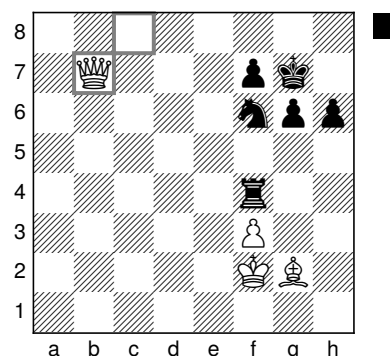
Book exit

Komodo Dragon—Stockfish 1–0

Jeroen was very happy with this opening, featuring queenside castling in the Queen's Indian—again, hardly a very common occurrence! Komodo was pretty happy, too, as some powerful opening play led Stockfish to sacrifice its queen for rook and piece. It didn't look like proper compensation, and Komodo's powerful play, returning the material to head into a rook and two bishops vs rook, knight, and bishop with a weak queenside pawn endgame, made a very convincing impression: Stockfish stood no chance whatsoever.



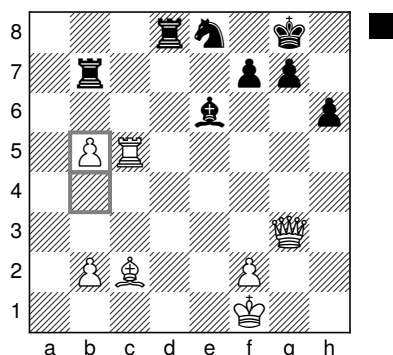
Komodo Dragon—Stockfish after 28. ♖c4×b3



Stockfish—Komodo Dragon after 63. ♖c8×b7 (variation) in Stockfish's PV starting from 43... ♖×b5.

Stockfish—Komodo Dragon 1-0

We can use exactly the same words as above, as this game followed the previous one until Black's 22nd move! Komodo found a much better defensive approach, wrecking White's queenside pawns by sacrificing its b-pawn.



Stockfish—Komodo Dragon after 43. b4-b5

Komodo's fierce resistance seemed to be paying dividends, as it had the chance to transpose into a rook, knight, and 3 pawns vs queen, bishop, and pawn ending in Stockfish's PV with 43... ♖×b5. To human eyes this looked very likely a draw, despite the +2 evaluation from the engines.⁶

⁶Stockfish's principal variation: 43... ♖×b5 44. ♖×b5 ♖c4+ 45. ♖g1 ♖×b5 46. ♖e5 ♖c6 47. ♖c5 ♖b7 48. ♖c7 ♖c8 49. b4 ♖d5 50. ♖d3 ♖f6 51. ♖h2 ♖e8 52. ♖c7 g6 53. b5 ♖g7 54. ♖c3 ♖e6 55. ♖f1 ♖e4 56. f3 ♖f4 57. ♖g2 ♖f5 58. b6 ♖h5+ 59. ♖g3 ♖g5+ 60. ♖f2 ♖f5 61. ♖c8 ♖f4 62. b7 ♖×b7 63. ♖×b7

Indeed, engine matches between two SuperFinal Stockfishes on my 94-thread machine led to two draws! However, at the last moment, Komodo sidestepped this line choosing a much worse continuation after which Stockfish showed no mercy! Stockfish survived and kept its clean game pair sheet intact!

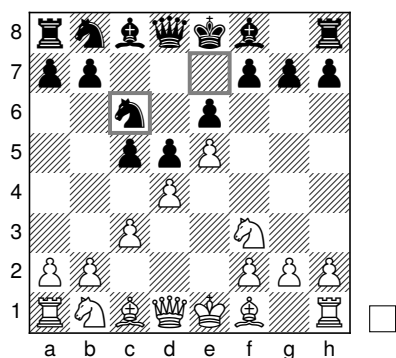
Engine	Pair score	Current score	Pair wins
Komodo Dragon	1 (+1 =0 -1)	15 (+4)	0
Stockfish	1 (+1 =0 -1)	25 (+14)	10
Pair result	Reverse kill		
Book score	Matthew-Jeroen 5-5		

Game links:

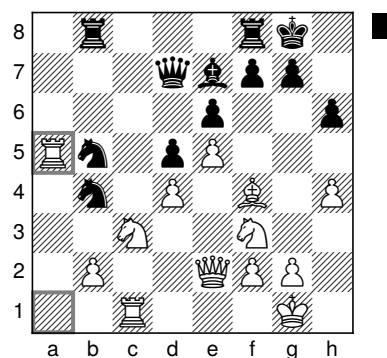
<https://tcec-chess.com/#div=sf&game=39&season=22>
<https://tcec-chess.com/#div=sf&game=40&season=22>

Games 41-42 French, Advance variation (C02)

Book moves (Matthew): 1. e4 e6 2. d4 d5 3. e5 c5 4. c3 ♖e7 5. ♖f3 ♖ec6



Book exit



Stockfish—Komodo Dragon after 20. ♖a1×a5

Komodo Dragon—Stockfish 0.5–0.5

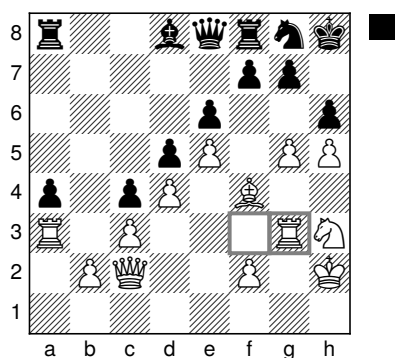
This odd development ... ♘g8-e7-c6 has surfaced from time in the games of French experts. Oddly enough, just when Komodo's kingside initiative seemed to be reaching its peak, Stockfish chose that moment to drop to 0.00!

However, the weakness of the b2-pawn and the general activity of White's pieces kept even Stockfish at bay, and Komodo didn't sweat too much to hold the draw in 66 moves.

Engine	Pair score	Current score	Pair wins
Komodo Dragon	1 (+0=2-0)	16 (+4)	0
Stockfish	1 (+0=2-0)	26 (+14)	10
Pair result	Double draw		
Book score	Matthew–Jeroen 5–5		

Game links:

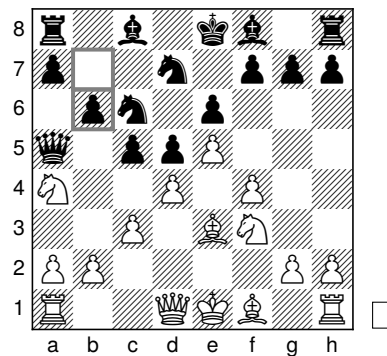
<https://tcec-chess.com/#div=sf&game=41&season=22>
<https://tcec-chess.com/#div=sf&game=42&season=22>



Komodo Dragon—Stockfish after 69. ♜f3–g3

Games 43–44 French, Steinitz (C11)

Book moves (Jeroen): 1. e4 e6 2. d4 d5 3. ♘c3 ♘f6 4. e5 ♘fd7 5. f4 c5 6. ♘f3 ♘c6 7. ♙e3 ♖b6 8. ♘a4 ♖a5+ 9. c3 b6



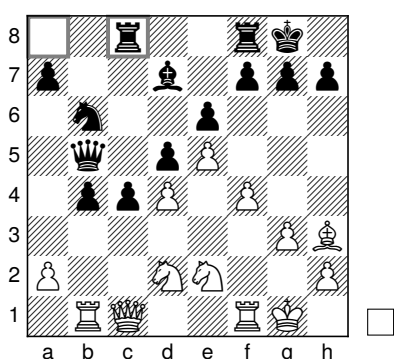
Book exit

Stockfish—Komodo Dragon 0.5–0.5

Unwilling to remain passive, Komodo sacrificed a queenside pawn for compensation that I found hard to detect!

Komodo Dragon—Stockfish 1–0
Stockfish—Komodo Dragon 1–0

When I saw that Jeroen had chosen this opening, I raised my eyebrows a little because I'd had a quick look at it myself and thought: "Nah, bit too much!" Good job Jeroen thought deeper because this unbalanced position with two big queenside passed pawns for a piece led to some really interesting games.



Stockfish—Komodo Dragon after 21... ♖a8-c8

In both cases, the side with the piece held sway, as Black's queenside pawns became blockaded leaving squares free for the knights to establish themselves.

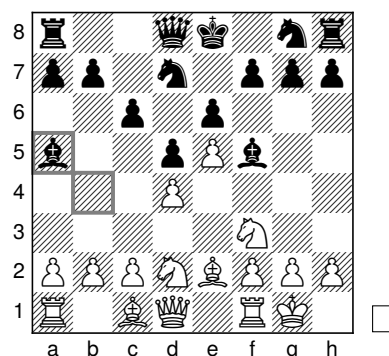
Engine	Pair score	Current score	Pair wins
Komodo Dragon	1 (+1 =0 -1)	17 (+5)	0
Stockfish	1 (+1 =0 -1)	27 (+15)	10
Pair result	Reverse kill		
Book score	Matthew–Jeroen 5–5		

Game links:

- <https://tcec-chess.com/#div=sf&game=43&season=22>
- <https://tcec-chess.com/#div=sf&game=44&season=22>

Games 45–46 Caro-Kann, Advance variation (B12)

Book moves (Matthew): 1. e4 c6 2. d4 d5 3. e5 ♟f5 4. ♟f3 e6 5. ♟e2 ♟b4+ 6. ♟bd2 ♟d7 7. O-O ♟a5



Book exit

Komodo Dragon—Stockfish 0.5–0.5

This opening featured an odd idea of Ipatov's (the inventor of the 1. d4 ♟a6 2. c4 e5 system!), which I had found in his book *Unconventional Approaches to Modern Chess* (Thinkers Publishing). It stirred some GM reaction on Twitter:


Peter Heine Nielsen
 @PHChess
 Replying to @gmmds



Seems we have gotten to the stage where they force engines to play Magnus openings 😊

Apr 13, 2022
<https://twitter.com/PHChess/status/1514265198835732484>

Matthew Sadler
 @gmmds
 Replying to @PHChess



I almost made the comment that it was played by Magnus so it must be good... but that's perhaps not necessarily 100% the case 😊😊

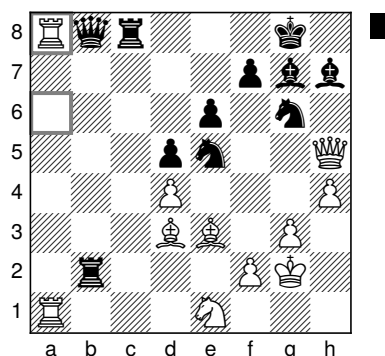
Apr 13, 2022
<https://twitter.com/gmmds/status/1514265641724829697>

and

Àlvar Alonso Rosell
 @AlvarAlonso
 Replying to @gmmds

Lovely idea maybe, but got crushed in 20 moves ahahaha be careful

Apr 13, 2022
<https://twitter.com/AlvarAlonso/status/1514265183467806728>



Komodo Dragon—Stockfish after 47. ♖a6–a8

...to head for a queen, rook, and bishop vs two rooks and two bishops position with the pawns on one side. Stockfish held this easily in the end.

Stockfish was under a little pressure as Black, but the sacrifice of a pawn on the queenside made Stockfish look quite content, even if it just looked pretty much like a clear pawn down to me. More GM commentary as the game progressed showed that Black's opening was viewed with suspicion:

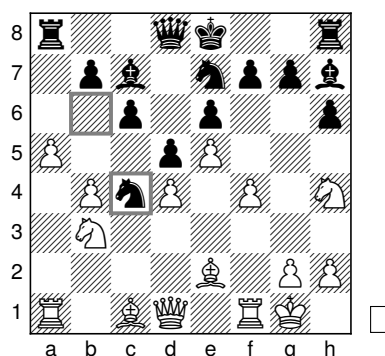
Stockfish—Komodo Dragon 1–0

Stockfish chose a completely different plan of a queenside bind with 9. b4 and 10. ♖b3 and seemed optimistic from the start.

Geir Sune Tallaksen Østmoe
 @GeirSune
 Replying to @gmmds

Stockfish makes a good case for Black's position being solid, but did the bishop manoeuvre to c7 achieve anything along the way? It ended up going back with Bc7-a5-b4-e7!

Apr 13, 2022
<https://twitter.com/GeirSune/status/1514317621935681539>



Stockfish—Komodo Dragon after 16... ♖b6–c4

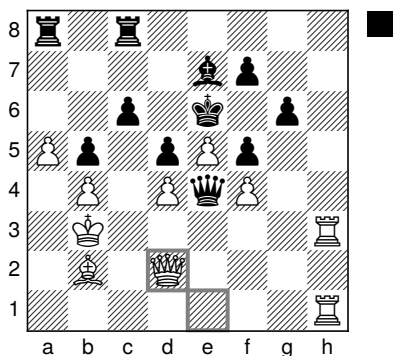
We certainly seemed set for a crazy game as Stockfish boomed steeply when considering the sharp 17. g4. However, after a 20-minute(!) think and 59.8 Gnodes,⁷ Stockfish decided instead on the tame 17. ♕d3 after which a draw was odds on. When I ran 17. g4 on my 94-thread machine overnight, after 1865891 Mnodes (d=72/83),⁸ 17. g4 was on +0.94, which is much higher than the 0.7 Stockfish displayed for 17. ♕d3.

The game got extremely complex, as Komodo sacrificed a piece on the kingside for two pawns, which Stockfish countered by sacrificing its queen...

⁷59.8 billion nodes

⁸1865.891 billion nodes, depth 72, selective depth 83

I announced in the chat that the game was dead and went off to bed. However, in the ensuing blitz zone, Stockfish lived up to its reputation of “the fastest Fish in the West” and tricked Komodo brilliantly by running Black’s queen into trouble and then...



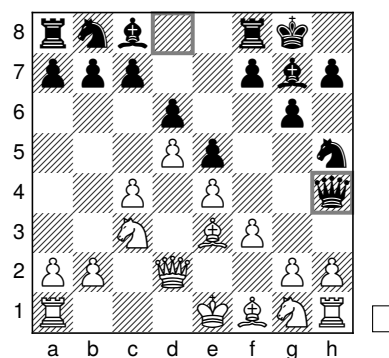
Stockfish—Komodo Dragon after 142. ♔e1-d2

...squeezing out an unlikely endgame win in 194 moves!

Engine	Pair score	Current score	Pair wins
Komodo Dragon	0.5 (+0 =1 -1)	17.5 (+5)	0
Stockfish	1.5 (+1 =1 -0)	28.5 (+16)	11
Pair result	Decisive pair		
Book score	Matthew–Jeroen 6–5		
Game links:			
https://tcec-chess.com/#div=sf&game=45&season=22			
https://tcec-chess.com/#div=sf&game=46&season=22			
Video links:			
https://youtu.be/oHsa_n5Oj9M			
https://youtu.be/C3J1BHRJRzo			

Games 47–48 King’s Indian, Sämisch (E87)

Book moves (Jeroen): 1. d4 ♘f6 2. c4 g6 3. ♘c3 ♗g7 4. e4 d6 5. f3 O-O 6. ♗e3 e5 7. d5 ♘h5 8. ♖d2 ♖h4+



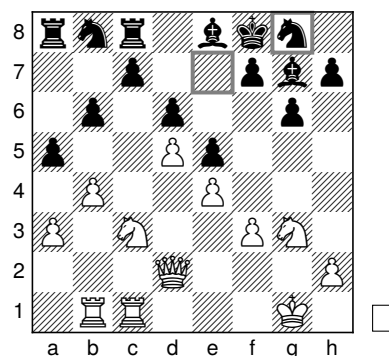
Book exit

Komodo Dragon—Stockfish 0.5–0.5

The Bronstein queen sac line in the Sämisch has always had a fond place in the hearts of the TCEC chatters, so Jeroen’s opening choice was met with much approbation! Unfortunately—and very surprisingly—Komodo decided to avoid the queen sac and play the tamer 9. ♗f2. Stockfish didn’t seem too troubled on the way to a draw.

Stockfish—Komodo Dragon 1–0

Stockfish was always going to take Komodo’s queen, and to be honest, the result was a bit dispiriting!



Stockfish—Komodo Dragon after 23... ♗e7-g8

This was not what the great David had envisaged when he came up with this sacrifice. Stockfish made it look quite easy, gradually loosening Black’s pawn structure before invading with its major pieces.

Engine	Pair score	Current score	Pair wins
Komodo Dragon	0.5 (+0 =1 -1)	18 (+5)	0
Stockfish	1.5 (+1 =1 -0)	30 (+17)	12
Pair result	Decisive pair		
Book score	Matthew–Jeroen 6–6		
Game links:			
https://tcec-chess.com/#div=sf&game=47&season=22			
https://tcec-chess.com/#div=sf&game=48&season=22			

Jonathan Tait
@malefemme



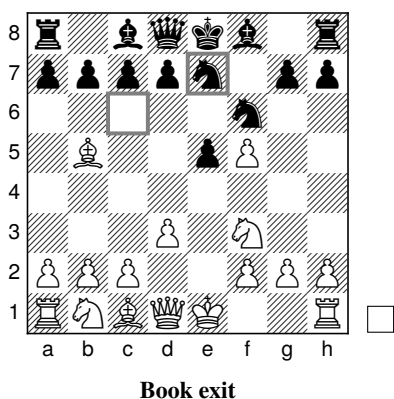
Replying to @gmmnds and @LawrenceTrentIM

5...Ne7 comes from CCGM Sandor Brilla Banfalvi and is one of the disreputable openings in my book 😊. Regarding which: 17 Nd1 was a new move, deviating from 17 Be5, Capalaskine-tsmenace (me), ChessWorld 2018. Glad to see it's holding up, at least until Stockfish gets White.

Apr 14, 2022
<https://twitter.com/malefemme/status/1514587337807863816>

Games 49–50 Ruy Lopez, Schliemann Gambit (C63)

Book moves (Matthew): 1. e4 e5 2. ♖f3 ♘c6 3. ♗b5 f5 4. d3 ♗f6 5. exf5 ♗e7

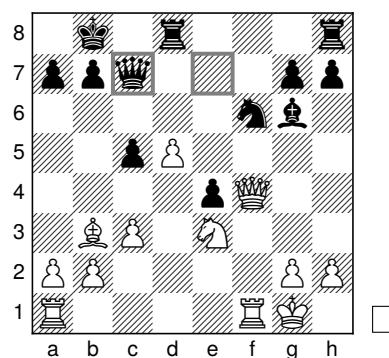


Komodo Dragon—Stockfish 0.5–0.5
Stockfish—Komodo Dragon 0.5–0.5

Next up I punted a Schliemann Gambit line that was a favourite of correspondence GM Boey, if I remember right. It obviously doesn't have a good reputation since it was featured in Jonathan Tait's *A Disreputable Opening Repertoire* (Everyman Chess)!

I expected to get two different games, as both Leela and Komodo had chosen 6. d4 (in 4 LTC games in total) while Stockfish had consistently favoured 6. O-O or 6. ♗a4 (which transposes to 6. O-O). Unfortunately, Komodo also chose 6. O-O here at the TCEC, increasing the chances of identical games quite severely!

And to my dismay that risk came out, as the reverse game followed the first game for the first 23 moves!



Komodo Dragon—Stockfish after 23... ♗e7–c7

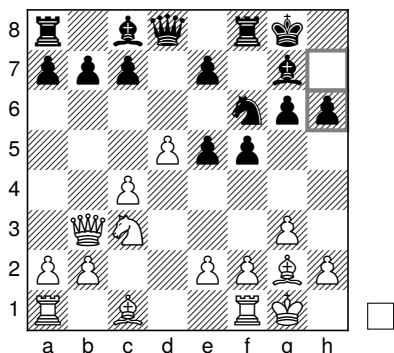
In its White game Stockfish had various moments of booming during these long thinks, but these long thinks always ended disappointingly in a slightly lower evaluation than it started with. Not a great spectacle, but quite significant for Schliemann theory!

Engine	Pair score	Current score	Pair wins
Komodo Dragon	1 (+0 =2 -0)	19 (+5)	0
Stockfish	1 (+0 =2 -0)	31 (+17)	12
Pair result	Double draw		
Book score	Matthew–Jeroen 6–6		

Game links:
<https://tcec-chess.com/#div=sf&game=49&season=22>
<https://tcec-chess.com/#div=sf&game=50&season=22>

Games 51–52 Dutch, Leningrad (A89)

Book moves (Jeroen): **1. d4 f5 2. ♖f3 ♗f6 3. g3 g6 4. ♗g2 ♗g7 5. c4 d6 6. O-O O-O 7. ♗c3 ♗c6 8. d5 ♗e5 9. ♗×e5 d×e5 10. ♖b3 h6**



Book exit

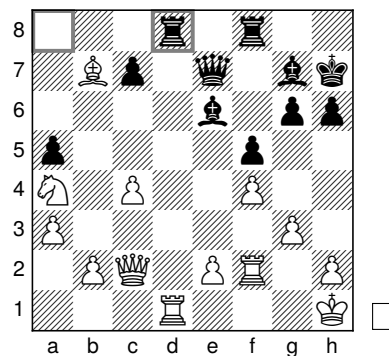
Komodo Dragon—Stockfish 0.5–0.5

The second half started with the dodgy Dutch Leningrad 7... ♗c6 8... ♗e5 line! Jeroen had already tried this line with an exit on White’s 10th move in the Stockfish–AllieStein Season 16 SuperFinal,⁹ but 10... h6 was his “next generation wrinkle”, as 10... e6 has proven quite resilient for Black in recent engine games.

Nakamura and Rapport have both tried this line for Black, which is a sign that it is dodgy but tricky and dangerous! On move 14 Komodo spent a long time on an exchange sacrifice with 14. f3, which seemed very promising to me. Eventually, Komodo

⁹<https://tcec-chess.com/#div=sf&game=86&season=16>

plumped for a line in which it won two pawns, but lost some control of the dark squares by exchanging its dark-squared bishop for Black’s knight.

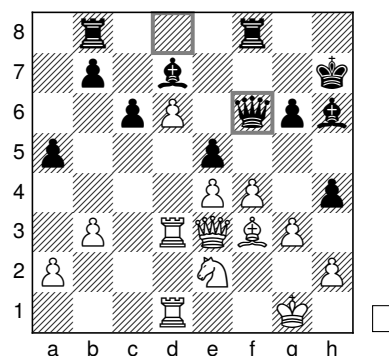


Komodo Dragon—Stockfish after 24... ♗a8–d8

Stockfish managed to steer the position to an opposite-coloured bishop position where White had no chances to break through.

Stockfish—Komodo Dragon 0.5–0.5

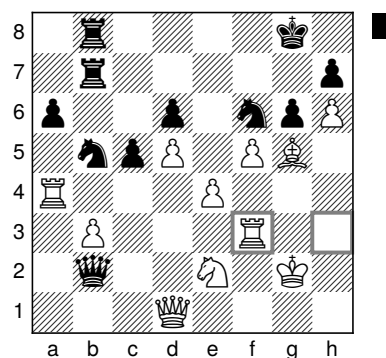
Jeroen expressed his surprise in the previous game at how restrained Leela’s evaluation was for such a dodgy line, and the same was true in Stockfish’s attempt as White. This time Komodo managed to exchange off its knight for White’s dark-squared bishop, and again, the resulting dark-squared control was enough to halt Stockfish’s advance...



Stockfish—Komodo Dragon after 26... ♖d8–f6

...the game reaching draw zone evaluations by move 30. Two surprisingly comfortable draws!

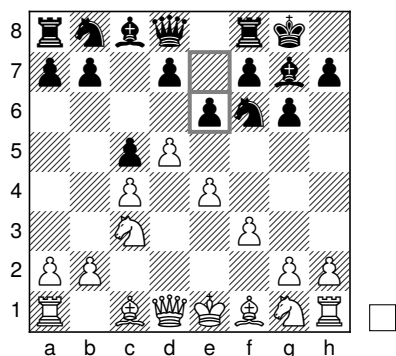
Engine	Pair score	Current score	Pair wins
Komodo Dragon	1 (+0 =2 -0)	20 (+5)	0
Stockfish	1 (+0 =2 -0)	32 (+17)	12
Pair result	Double draw		
Book score	Matthew–Jeroen 6–6		
Game links:			
https://tcec-chess.com/#div=sf&game=51&season=22			
https://tcec-chess.com/#div=sf&game=52&season=22			



Komodo Dragon—Stockfish after 39. ♖h3–f3

Games 53–54 King’s Indian (E70)

Book moves (Matthew): 1. d4 ♟f6 2. c4 g6 3. ♘c3 ♗g7 4. e4 O-O 5. f3 c5 6. d5 e6



Book exit

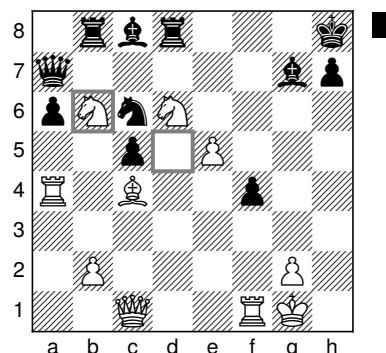
Komodo Dragon—Stockfish 0.5–0.5

This line was one of my lower exits: I can never resist choosing a few exits where my feeling about a position is different to the engines’! Black’s 6th move should be a clear inaccuracy, allowing White to set up an ideal development scheme with 7. ♘h3 and 8. ♟f2 which would be impossible after 6... d6 by Black. White normally needs to spend four tempi with ♟ge2-g3-h1-f2 to achieve the same thing! I hoped that these two tempi might lead to something. Both engines as White opted for immediate aggression with h4-h5, and both engines as Black opted for the surprising idea of moving a knight away from the kingside (to c7 via e8). At some stage, Komodo seemed to be building up something quite promising on the kingside with Black’s queen somewhat vulnerable to tempi hits...

...but Stockfish had it all covered!

Stockfish—Komodo Dragon 0.5–0.5

Stockfish’s initiative reached a climax with the scary-looking 30. ♟b6...



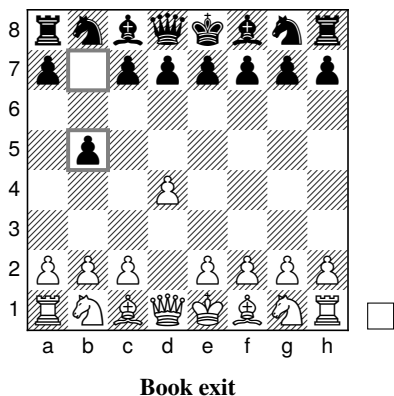
Stockfish—Komodo Dragon after 30. ♟d5–b6

...but unfortunately the 0.00 and 0.02 evaluations rather belied outer appearances, and a draw was not far away.

Engine	Pair score	Current score	Pair wins
Komodo Dragon	1 (+0 =2 -0)	21 (+5)	0
Stockfish	1 (+0 =2 -0)	33 (+17)	12
Pair result	Double draw		
Book score	Matthew–Jeroen 6–6		
Game links:			
https://tcec-chess.com/#div=sf&game=53&season=22			
https://tcec-chess.com/#div=sf&game=54&season=22			

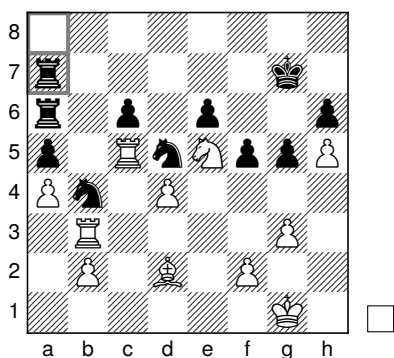
Games 55–56 Polish Defence (A40)

Book moves (Jeroen): **1. d4 b5**



Komodo Dragon—Stockfish 1–0

1. d4 b5 was Jeroen’s 2-ply SuFi line, and it had a lot of transposition possibilities to a game pair in the InfraFinal which started 1. e4 a6 2. d4 b5.¹⁰ Of course part of the value of these openings in human games is the shock effect, but the engines haven’t yet developed any sensitivity to that! Komodo produced another trademark squeeze against Stockfish...

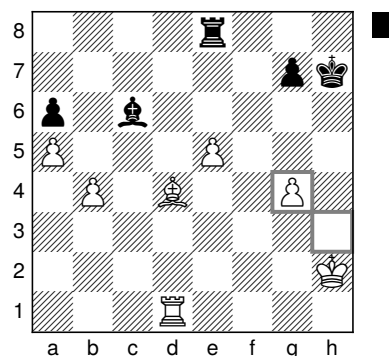


...suffocating Black’s position of counterplay before pouncing at the right moment to win material.

¹⁰See <https://tcec-chess.com/#div=if&game=46&season=22> with video coverage at <https://youtu.be/MyjaDsCRHO4>.

Stockfish—Komodo Dragon 1–0

Unfortunately—not for the first time this SuFi—Komodo wasn’t able to do much better than Stockfish as Black. Stockfish picked up positional advantages from the off and converted this into a two extra pawns in a rook and opposite-coloured bishops ending.

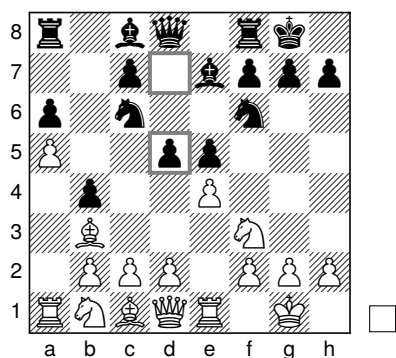


It didn’t look trivial, but Stockfish was at +6, so you didn’t question the likely end result!

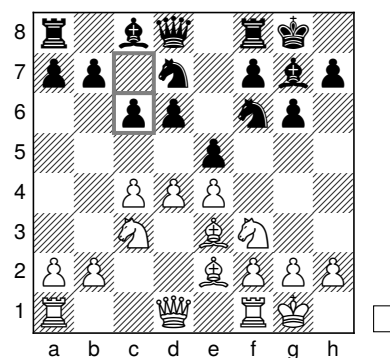
Engine	Pair score	Current score	Pair wins
Komodo Dragon	1 (+1 =0 -1)	22 (+6)	0
Stockfish	1 (+1 =0 -1)	34 (+18)	12
Pair result	Reverse kill		
Book score	Matthew–Jeroen 6–6		
Game links:			
https://tcec-chess.com/#div=sf&game=55&season=22			
https://tcec-chess.com/#div=sf&game=56&season=22			

Games 57–58 Ruy Lopez, Closed, Anti-Marshall, (C88)

Book moves (Matthew): **1. e4 e5 2. ♘f3 ♘c6 3. ♗b5 a6 4. ♗a4 ♘f6 5. O-O ♗e7 6. ♖e1 b5 7. ♗b3 O-O 8. a4 b4 9. a5 d5**



Book exit



Book exit

Komodo Dragon—Stockfish 0.5–0.5
Stockfish—Komodo Dragon 0.5–0.5

This was the second-to-last of my lower book exits before we ramped up towards the finishing line! I spent a long time checking out various Marshalls and anti-Marshalls for the SuperFinal, and I wanted to use that work for at least one game! This one had featured some wild games—featuring some nice counterattacks from Black—so it seemed worth a punt... Looking back, it probably wasn't! Both engines defended actively, and White's extra pawn never played a role.

Engine	Pair score	Current score	Pair wins
Komodo Dragon	1 (+0 =2 -0)	23 (+6)	0
Stockfish	1 (+0 =2 -0)	35 (+18)	12
Pair result	Double draw		
Book score	Matthew–Jeroen 6–6		

Game links:

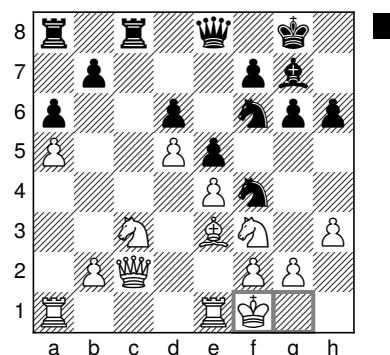
- <https://tcec-chess.com/#div=sf&game=57&season=22>
- <https://tcec-chess.com/#div=sf&game=58&season=22>

Games 59–60 King's Indian, orthodox, 7... Nbd7 (E94)

Book moves (Jeroen): 1. d4 ♘f6 2. c4 g6 3. ♘c3 ♗g7 4. e4 d6 5. ♘f3 O-O 6. ♗e2 e5 7. O-O ♘bd7 8. ♗e3 c6

Komodo Dragon—Stockfish 0.5–0.5

This deceptively normal-looking King's Indian caused both engines a lot of problems. Stockfish essentially bent but did not break. At one point with Stockfish at 1.57 and Leela on 0.68, it seemed as if Komodo might turn the opening advantage into something serious...

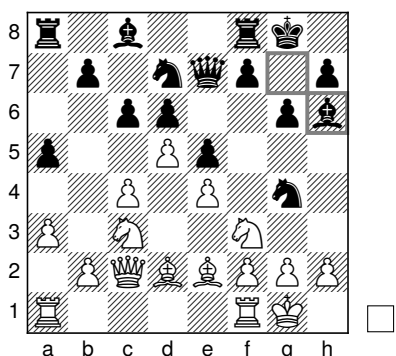


Komodo Dragon—Stockfish after 25. ♖g1×f1

...but as Komodo gained more queenside space, Stockfish's evaluation decreased until eventually Komodo ran out of ideas.

Stockfish—Komodo Dragon 1–0

Komodo took a very risky decision on move 12 by offering the exchange of the King's Indian bishops.



Stockfish—Komodo Dragon after 12... ♗g7-h6

This drew a fierce response from one King's Indian aficionado!

Ali Mortazavi
@AAMortazavi
Replying to @gmmds



You can't exchange that bishop. It's a sin.

Apr 16, 2022
<https://twitter.com/AAMortazavi/status/1515253534299676674>

Matthew Sadler
@gmmds



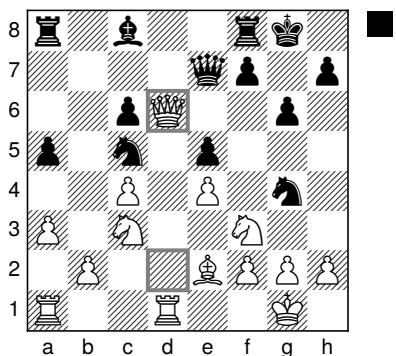
Incredible conversion technique from Stockfish. Quick guess: which will the first white pawn to reach the 7th rank?



Apr 16, 2022
<https://twitter.com/gmmds/status/1515292215865708549>

It turned out to be...too hard to guess!

Actually, it simply looked like a tactical mistake, as Stockfish picked up the d6-pawn by force.



Stockfish—Komodo Dragon after 17. ♖d2×d6

Of course, Komodo had seen quite deeply into the position and was relying on pressure on f2 to give it counterplay, but Stockfish crunched through the lines and was already at 2.76 at move 18, heading for a position with rook and three pawns for two knights.

I set a little quiz to my Twitter followers:

Matthew Sadler
@gmmds
Replying to @jon_mill



Pretty hard to guess tbh! 😊😊 The e-pawn! 😎😎 Stockfish gave up both its queenside pawns to manufacture a passed doubled f-pawn!



Apr 16, 2022
<https://twitter.com/gmmds/status/1515311377593810961>

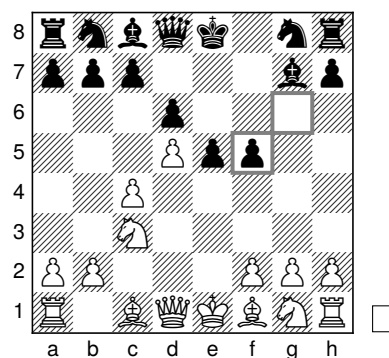
Stockfish converted the game beautifully, exploiting the inability of Black's two knights to cover passed pawns on both wings. Soon it was pieces back in the box time!

Matthew Sadler
@gmmds

Dispirited Komodo setting up the pieces for the next game as Stockfish wins another game to make it 19-6!
<https://tcec-chess.com/#>



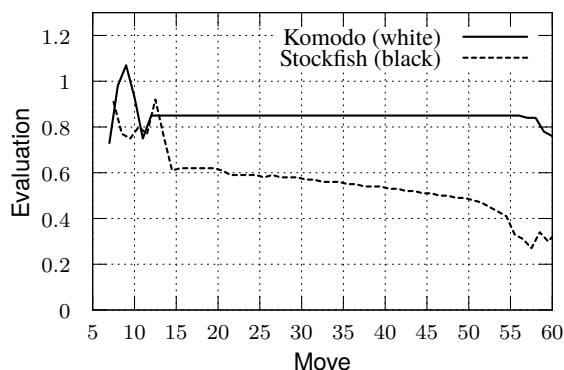
Apr 16, 2022
<https://twitter.com/gmmds/status/1515310797840388101>



Book exit

Komodo Dragon—Stockfish 0.5–0.5

I've always liked this line, having played against it on a number of occasions. Intuitively, I would expect Black's displaced king to cause severe difficulties in a fairly open King's Indian structure. But once again, this was one of my lower book exits (Leela at 0.38–0.39), as my engines steadfastly refuse to go along with that narrative! Komodo got a nice-looking position but one which it seemed unable to improve any further. It kept on believing in its position for a long time...



Game 61 engine evaluations (moves 7–60)

...to no avail (look at that solid black line!): the game was pretty much a shuffle draw.

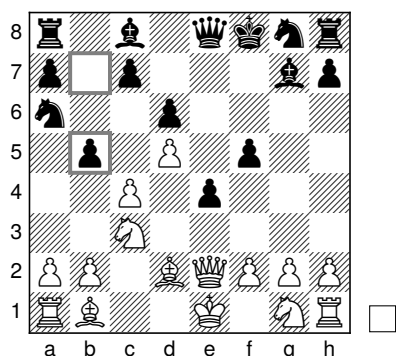
Engine	Pair score	Current score	Pair wins
Komodo Dragon	0.5 (+0 =1 -1)	23.5 (+6)	0
Stockfish	1.5 (+1 =1 -0)	36.5 (+19)	13
Pair result	Decisive pair		
Book score	Matthew–Jeroen 6–7		
Game links:			
https://tcec-chess.com/#div=sf&game=59&season=22			
https://tcec-chess.com/#div=sf&game=60&season=22			

Games 61–62 Modern Defence (A42)

Book moves (Matthew): **1. d4 d6 2. e4 g6 3. c4 ♘g7 4. ♖c3 e5 5. d5 f5 6. exf5 gxf5**

Stockfish—Komodo Dragon 0.5–0.5

The game started with an optimistic Stockfish, whose optimism disappeared after Komodo's starting **11... b5!**



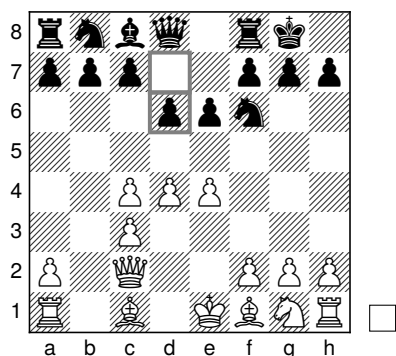
Stockfish—Komodo Dragon after 11... b7–b5

Funnily enough, I had seen this line before in my engine matches in a game between Komodo (White) and Stockfish (Black)! Stockfish had moments of optimism again, but an exchange sacrifice from Komodo brought the evaluations to 0.00!

Engine	Pair score	Current score	Pair wins
Komodo Dragon	1 (+0=2-0)	24.5 (+6)	0
Stockfish	1 (+0=2-0)	37.5 (+19)	13
Pair result	Double draw		
Book score	Matthew–Jeroen 6–7		
Game links:			
https://tcec-chess.com/#div=sf&game=61&season=22			
https://tcec-chess.com/#div=sf&game=62&season=22			

Games 63–64 Nimzo-Indian (E32)

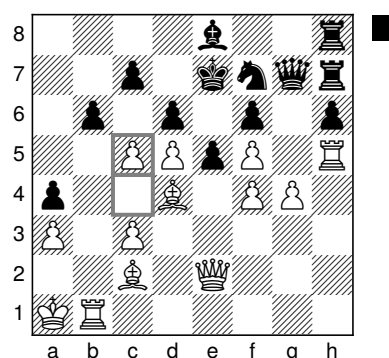
Book moves (Jeroen): 1. d4 ♘f6 2. c4 e6 3. ♘c3 ♙b4 4. ♖c2 O-O 5. e4 ♙xc3+ 6. bxc3 d6



Book exit

Komodo Dragon—Stockfish 1–0

A “submissive Nimzo-Indian” was TCEC chatter digretion’s name for this opening, and that’s a pretty good summary! Black doesn’t fight for the centre, but sets up a solid dark-squared central pawn structure to keep the White pieces at bay. Unfortunately, give the top engines a big space advantage and they just take more! Komodo played very well, finishing off with a powerful attack...



Komodo Dragon—Stockfish after 54. c4–c5

...that elicited a few admiring comments on my YouTube channel!

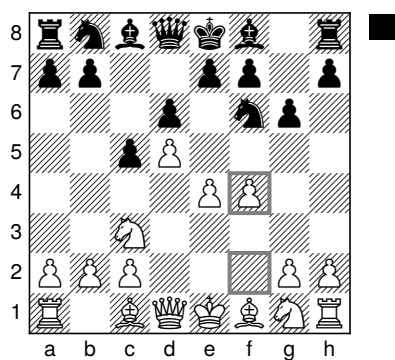
Stockfish—Komodo Dragon 1–0

Unfortunately for Komodo, this was not to be the long-awaited first game pair win: Stockfish was less spectacular than Komodo but just as effective!

Engine	Pair score	Current score	Pair wins
Komodo Dragon	1 (+1=0-1)	25.5 (+7)	0
Stockfish	1 (+1=0-1)	38.5 (+20)	13
Pair result	Reverse kill		
Book score	Matthew–Jeroen 6–7		
Game links:			
https://tcec-chess.com/#div=sf&game=63&season=22			
https://tcec-chess.com/#div=sf&game=64&season=22			
Video link:			
https://youtu.be/gjedyYMhT8w			

Games 65–66 Old Benoni (A43)

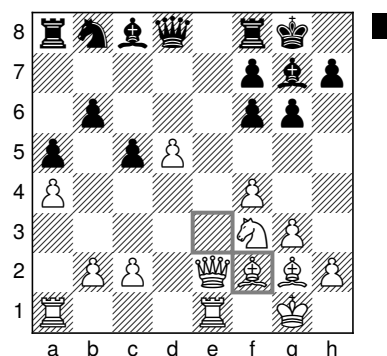
Book moves (Matthew): 1. d4 c5 2. d5 ♖f6 3. ♗c3 g6 4. e4 d6 5. f4



Book exit

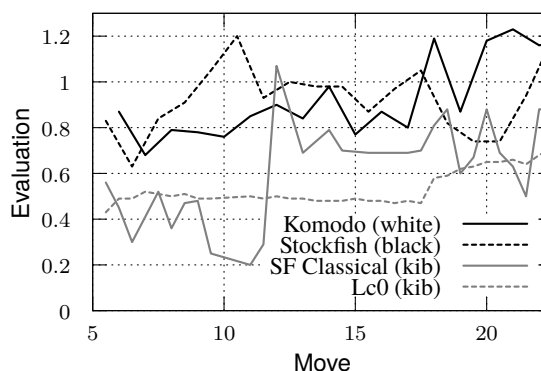
Komodo Dragon—Stockfish 0.5–0.5

The Schmid Benoni is normally ventured only when White has played ♗f3 already (e.g., after 1. d4 ♗f6 2. ♗f3 c5 3. d5 d6) when it's not too bad at all—we've seen a lot of draws in this line at the TCEC. This move order which allows White to play f4 as in this game is supposed to be *really bad*, but the engines pull that back up to just *very difficult*, which makes it a decent SuperFinal opening, I think. It was actually an opening from which Leela had scored a game pair win against Stockfish in my engine matches, which made me wonder whether this might be an opportunity for a first game pair win by Komodo! Stockfish chose a line that leaves White basically a pawn up on the queenside due to the doubled f-pawns. And unlike in the Korchnoi line of the Caro-Kann (1.e4 c6 2.d4 d5 3.Nc3 dxe4 4.Ne4 Nf6 5.Nxf6 exf6), White's kingside is very solid, which means no counterplay there for Black.



Komodo Dragon—Stockfish after 19. ♗e3–f2

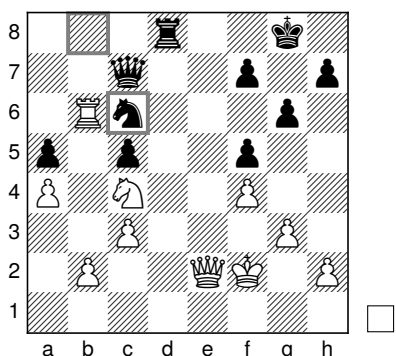
Stockfish's evaluation varied significantly in the early stages, rising to +1.2 and then falling back to 0.8. Komodo's evaluation was fairly similar:



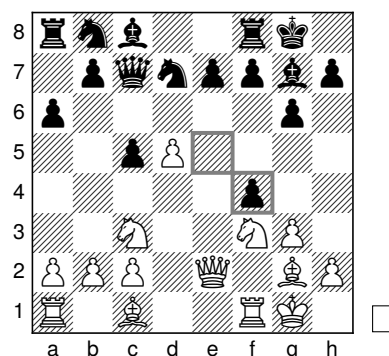
Game 65 engine evaluations including kibitzers (moves 5–22)

However, the trend was generally upwards, and neither Leela nor Komodo liked Stockfish's (very odd) 17... ♗b8. In the good old days, a 0.69 evaluation from Leela (dotted grey) would have meant an almost certain win, but these are strange and uncertain times, and Stockfish has shown itself adept at holding positions with much worse evaluations than that! The evaluation boom and moob¹¹ continued as Stockfish headed for a queen-rook-knight vs queen-rook-knight position that looked pretty nasty to me!

¹¹In TCEC lingo, a *boom* means a significant evaluation jump away from 0.00, while *moob* is the opposite.

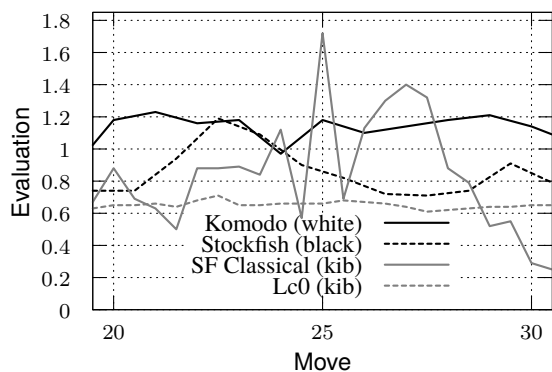


Komodo Dragon—Stockfish after 30... ♖b8–c6



Stockfish—Komodo Dragon after 11... e5×f4

Stockfish Classical (solid grey) boomed suddenly to 1.63, as it started to evaluate rook and knight vs rook and knight endgame positions, which considering its use of 7-man tablebases seemed a bit worrying for Stockfish fans. However, just as suddenly as it had appeared, Stockfish Classical's confidence disappeared...



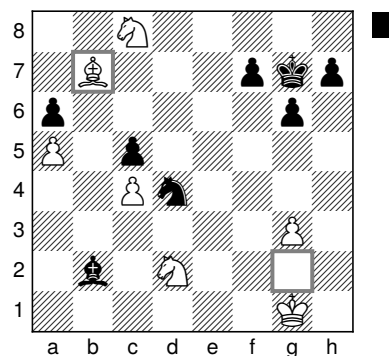
Game 65 engine evaluations including kibitzers (moves 20–35)

...and it emerged that it was a draw after all!

Stockfish—Komodo Dragon 1–0

Komodo varied as Black with 11... e×f4, and this was extremely risky.

Bizarrely, this game followed an engine game I'd played with the Stockfish version of 22nd January 2022 against Dragon 2.6 on my 14-thread machine with 150m+15s time control until Black's 29th move!



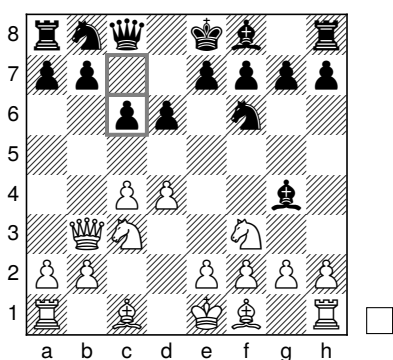
Stockfish—Komodo Dragon after 29. ♖g2×b7

Just as in that game, Stockfish converted a difficult technical endgame with the minimum fuss, notching up its 14th game pair win of the match!

Engine	Pair score	Current score	Pair wins
Komodo Dragon	0.5 (+0 =1 -1)	26 (+7)	0
Stockfish	1.5 (+1 =1 -0)	40 (+21)	14
Pair result	Decisive pair		
Book score	Matthew–Jeroen 7–7		
Game links:			
https://tcec-chess.com/#div=sf&game=65&season=22			
https://tcec-chess.com/#div=sf&game=66&season=22			

Games 67–68 Old Indian (A41)

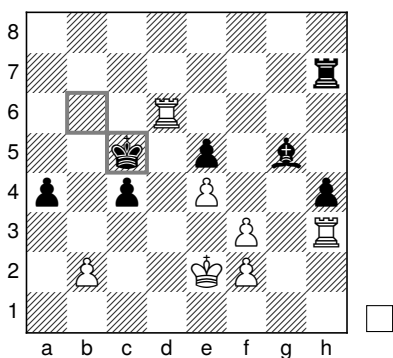
Book moves (Jeroen): 1. d4 d6 2. $\text{c}\text{f}3$ $\text{g}4$ 3. c4 $\text{f}6$ 4. $\text{b}3$ $\text{c}8$ 5. $\text{c}3$ c6



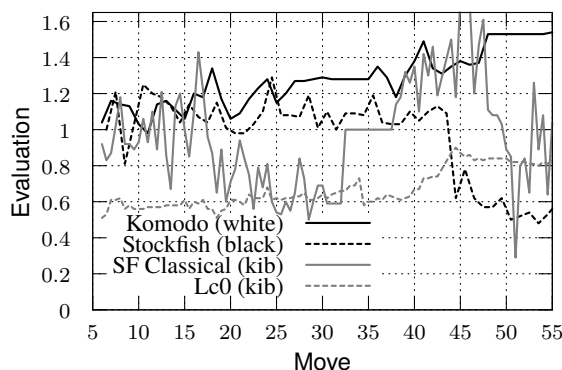
Book exit

Komodo Dragon—Stockfish 0.5–0.5

Early queenside castling indicated the right spirit from Komodo right from the off. White's advantage seemed to be growing, then took a little hit, and then seemed to pick up again, as Stockfish started unleashing active moves like 37... g5 and 42... b5 in a position where it seemed it should batten down the hatches! However, a fine exchange sacrifice (48... $\text{c}2 \times \text{d}6$) was correctly assessed only by Stockfish...

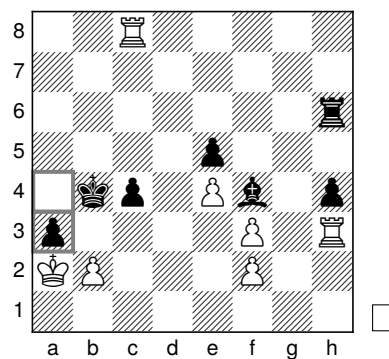


Komodo Dragon—Stockfish after 50... $\text{c}2 \times \text{d}6$



Game 67 engine evaluations including kibitzers (moves 6–55). Stockfish's evaluation dropped after Komodo played 44. $\text{c} \times \text{b}5$. Stockfish expected 44. $\text{d}1$ $\text{e}7$ 45. a4 b4 46. $\text{c}2$ $\text{e}6$ 47. b3, instead.

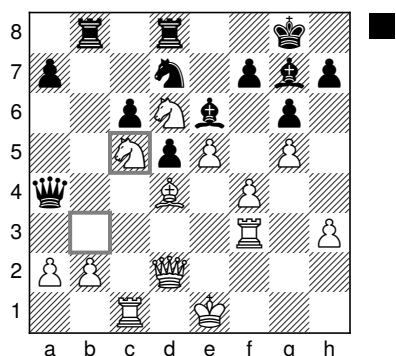
...and that was that! Black's h-pawn and entrenched bishop on f4 proved sufficient to keep the White pieces at bay, although it was hardly simple. In particular, Stockfish had to foresee the brilliant 79... a3 defence against White's attempt to pick up the a4-pawn perhaps 20 moves in advance!



Komodo Dragon—Stockfish after 79... a4–a3

Stockfish—Komodo Dragon 1–0

The next game witnessed a lovely slow squeeze from Stockfish, establishing a grip on the dark squares...



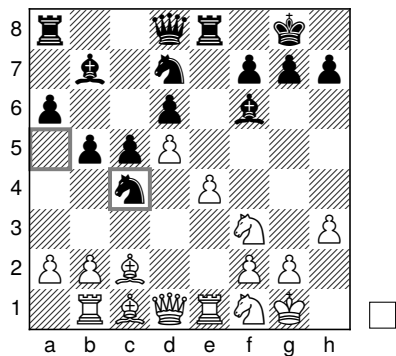
Stockfish—Komodo Dragon after 31. ♖b3-c5

...and then never looking back!

Engine	Pair score	Current score	Pair wins
Komodo Dragon	0.5 (+0 =1 -1)	26.5 (+7)	0
Stockfish	1.5 (+1 =1 -0)	41.5 (+22)	15
Pair result	Decisive pair		
Book score	Matthew—Jeroen 7–8		
Game links:			
https://tcec-chess.com/#div=sf&game=67&season=22			
https://tcec-chess.com/#div=sf&game=68&season=22			

Games 69–70 Ruy Lopez, Flohr-Zaitsev (C92)

Book moves (Matthew): 1. e4 e5 2. ♖f3 ♖c6 3. ♙b5 a6 4. ♙a4 ♗f6 5. O-O ♙e7 6. ♜e1 b5 7. ♙b3 d6 8. c3 O-O 9. h3 ♙b7 10. d4 ♗d7 11. ♗bd2 e×d4 12. c×d4 ♜e8 13. ♗f1 ♗a5 14. ♙c2 ♙f6 15. ♜b1 c5 16. d5 ♗c4



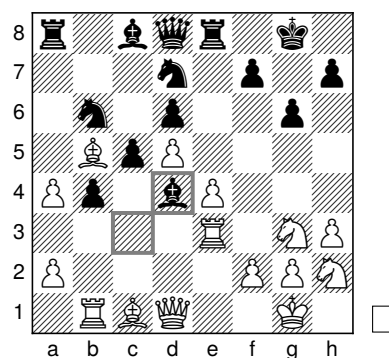
Book exit

Komodo Dragon—Stockfish 0.5–0.5

This opening depended very heavily on White finding a first good move after the book exit. Unfortunately, Komodo did not manage, drawing a fairly tame game after 17. ♗g3.

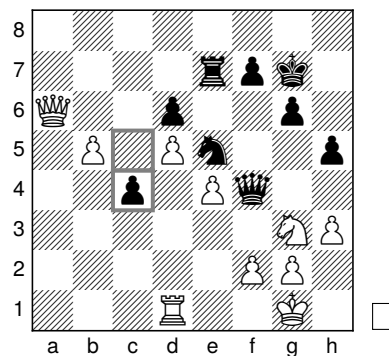
Stockfish—Komodo Dragon 0.5–0.5

Stockfish did, indeed, find the dangerous 17. ♗3h2, and around move 25, things seemed to have taken a very dodgy turn for Black:



Stockfish—Komodo Dragon after 25... ♙c3-d4

However, surprisingly, White's initiative petered out to nothing, an extra b-pawn proving insufficient advantage against Black's activity.



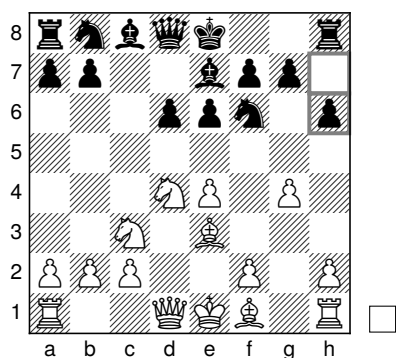
Stockfish—Komodo Dragon after 41... c5-c4

Fine defence from Komodo!

Engine	Pair score	Current score	Pair wins
Komodo Dragon	1 (+0 =2 -0)	27.5 (+7)	0
Stockfish	1 (+0 =2 -0)	42.5 (+22)	15
Pair result	Double draw		
Book score	Matthew–Jeroen 7–8		
Game links:			
https://tcec-chess.com/#div=sf&game=69&season=22			
https://tcec-chess.com/#div=sf&game=70&season=22			

Games 71–72 Sicilian, Scheveningen (B80)

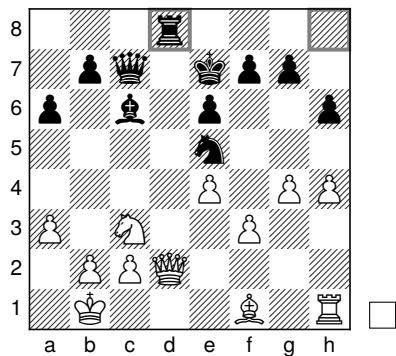
Book moves (Jeroen): 1. e4 c5 2. ♘f3 e6 3. d4 c×d4 4. ♘×d4 ♘f6 5. ♘c3 d6 6. ♕e3 ♕e7 7. g4 h6



Book exit

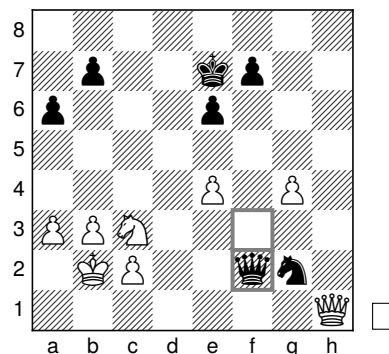
Komodo Dragon—Stockfish 0.5–0.5

We seemed set for a reverse kill, as Komodo won a pawn and raced to a 1.47 advantage.



Komodo Dragon—Stockfish after 20... ♖h8×d8

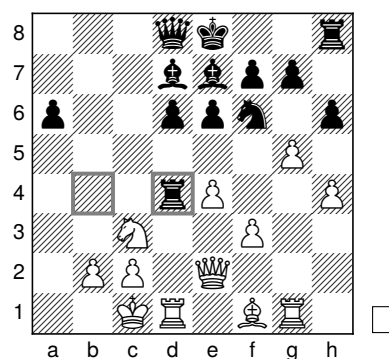
However, mystifyingly, just 15 moves later Komodo had lost all its advantage and was staring at a Stockfish 0.00 evaluation!



Komodo Dragon—Stockfish after 37... ♖f3–f2

Stockfish—Komodo Dragon 1–0

The omens did not seem good... and so that proved to be! Komodo was forced to sacrifice the exchange to slow down White's kingside attack...



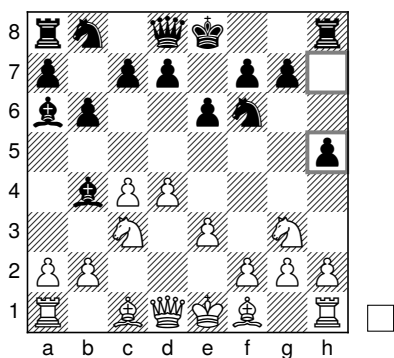
Stockfish—Komodo Dragon after 16... ♖b4×d4

...but never had enough for it.

Engine	Pair score	Current score	Pair wins
Komodo Dragon	0.5 (+0 =1 -1)	28 (+7)	0
Stockfish	1.5 (+1 =1 -0)	44 (+23)	16
Pair result	Decisive pair		
Book score	Matthew–Jeroen 7–9		
Game links:			
https://tcec-chess.com/#div=sf&game=71&season=22			
https://tcec-chess.com/#div=sf&game=72&season=22			

Games 73–74 Nimzo-Indian (E45)

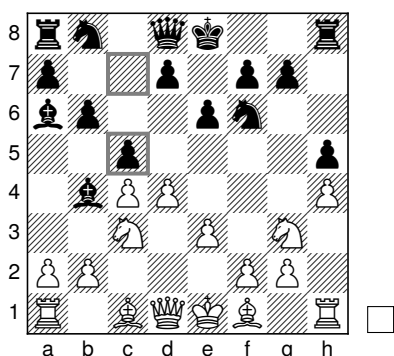
Book moves (Matthew): 1. d4 ♘f6 2. c4 e6 3. ♘c3 ♙b4 4. e3 b6 5. ♗e2 ♙a6 6. ♗g3 h5



Book exit

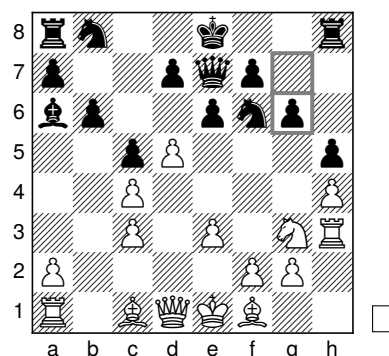
Komodo Dragon—Stockfish 0.5–0.5

The Fischer line (5... ♙a6) against the 4. e3 Classical Nimzo-Indian has always fascinated me, and the sharp reply 6... h5 to White's most aggressive line 6. ♗g3 produced plenty of excitement in my engine matches with both Stockfish and Komodo scoring wins against each other in separate matches. All my long-play games continued with 7... ♙b7 8. ♙d2 ♙d6 9. ♖h3 with non-standard play, but Stockfish threw a curveball with 7... c5 which also led to bizarre positions!



Komodo Dragon—Stockfish after 7... c7–c5

As Stockfish's odd moves continued (9... ♖e7, 10... g6)...

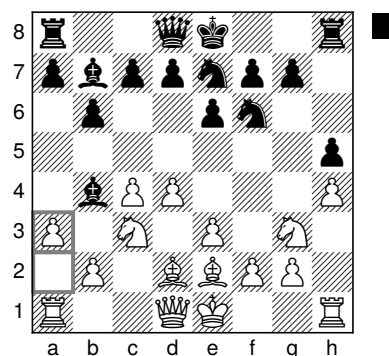


Komodo Dragon—Stockfish after 10... g7–g6

...it felt as if White should be building up a great Sämisch position, but instead Stockfish's evaluation dipped steadily, reaching 0.09 by move 26! The most optimistic Stockfish fans were talking about a possible Black win if the trend continued, but we never got further than 0.00.

Stockfish—Komodo Dragon 0.5–0.5

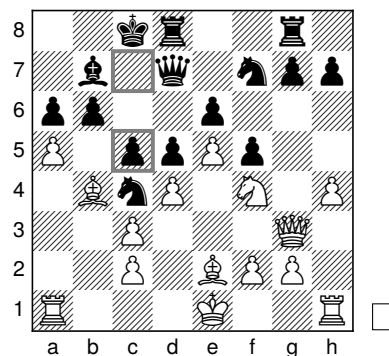
Komodo considered 7... c5 seriously for a few heart-stopping moments before plumping for 7... ♙b7 which guaranteed a different game at least. The ugly-looking follow-up 8... ♗c6 didn't inspire confidence, and Stockfish raced to a 1.25 evaluation, having started at 0.90.



Stockfish—Komodo Dragon after 10. a2–a3

However, as often seems to happen with Stockfish's opening evaluation, it started to melt away, and it was back at 0.86 by move 14. Komodo held the game comfortably from then on.

Engine	Pair score	Current score	Pair wins
Komodo Dragon	1 (+0 =2 -0)	29 (+7)	0
Stockfish	1 (+0 =2 -0)	45 (+23)	16
Pair result	Double draw		
Book score	Matthew–Jeroen 7–9		
Game links:			
https://tcec-chess.com/#div=sf&game=73&season=22			
https://tcec-chess.com/#div=sf&game=74&season=22			

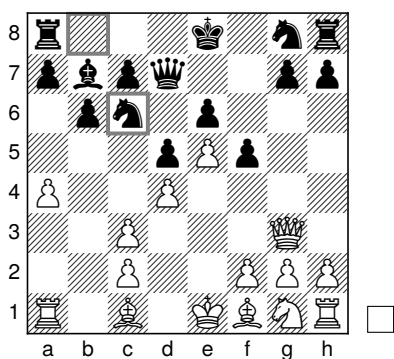


Komodo Dragon—Stockfish after 17... c7–c5

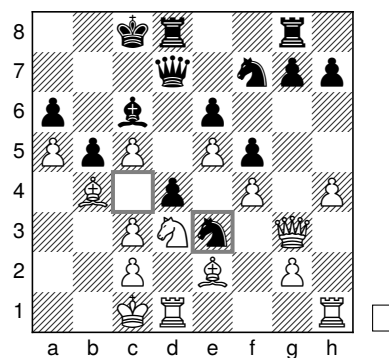
Games 75–76 French, Winawer (C16)

Book moves (Jeroen): 1. e4 e6 2. d4 d5 3. ♘c3 ♙b4 4. e5 ♖d7 5. a3 ♙×c3+ 6. b×c3 b6 7. ♖g4 f5 8. ♗g3 ♙b7 9. a4 ♘c6

...and then winning the exchange.



Book exit



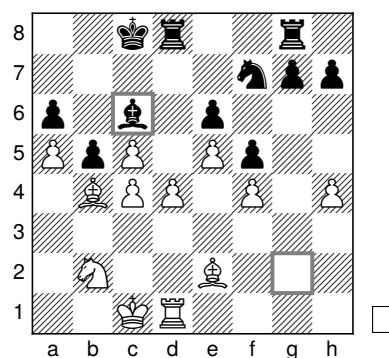
Komodo Dragon—Stockfish after 21... ♘e4–e3

The resulting position would have been lovely for White were it not for the misplaced knight on b2...

Komodo Dragon—Stockfish 0.5–0.5

This game featured a risky line of the Winawer that every French player has looked at from time to time, inspired most likely by a Petrosian victory! There is potential to punish insufficiently energetic play from a White player who is too mindful of his structural weaknesses. But modern engines handle the white side extremely well.

Komodo seemed to be doing the business until Stockfish unleashed an amazing defensive sequence that hung by a thread, sacrificing first a pawn...

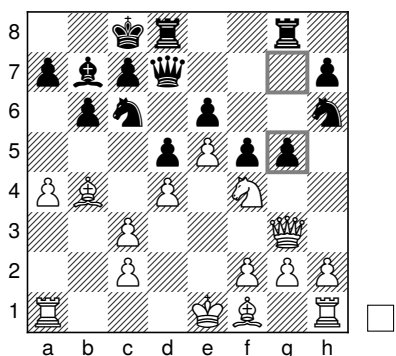


Komodo Dragon—Stockfish after 26... ♙g2–c6

...and this was enough for Stockfish to display a 0.00 evaluation at move 26, which it held until the end!

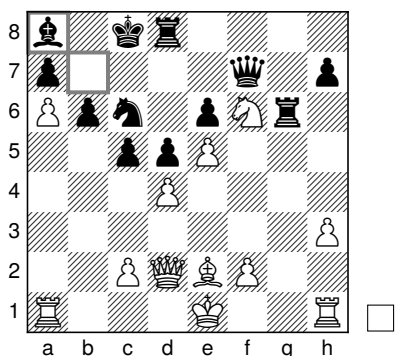
Stockfish—Komodo Dragon 1–0

As we have seen so often in the match, Stockfish followed up a virtuoso defensive performance in a ropey position with a powerful demolition from the White side. Komodo jumped at the opportunity to play **13... g5...**



Stockfish—Komodo Dragon after 13... g7–g5

...when Stockfish omitted to prevent it with the customary h4, but the resulting white knight on f6 seemed to cast an ominous shadow over Black’s position for the rest of the game.



Stockfish—Komodo Dragon after 25... ♗b7–a8

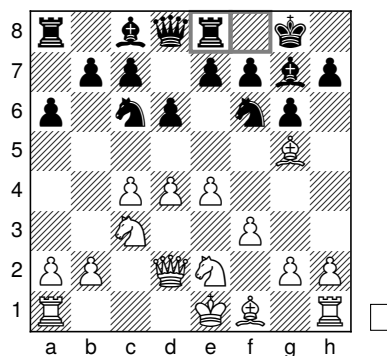
The rest seemed bizarrely routine for Stockfish as it advanced its h-pawn, swapped off rooks on the g-file, grabbed Black’s h-pawn, and then queened its own!

Engine	Pair score	Current score	Pair wins
Komodo Dragon	0.5 (+0=1 -1)	29.5 (+7)	0
Stockfish	1.5 (+1=1 -0)	46.5 (+24)	17
Pair result	Decisive pair		
Book score	Matthew–Jeroen 7–10		

Game links:
<https://tcec-chess.com/#div=sf&game=75&season=22>
<https://tcec-chess.com/#div=sf&game=76&season=22>

Games 77–78 King’s Indian Sämisch (E81)

Book moves (Matthew): **1. d4 ♘f6 2. c4 g6 3. ♖c3 ♗g7 4. e4 d6 5. f3 O-O 6. ♗g5 ♘c6 7. ♖ge2 a6 8. ♙d2 ♖e8**



Book exit

Komodo Dragon—Stockfish 0.5–0.5

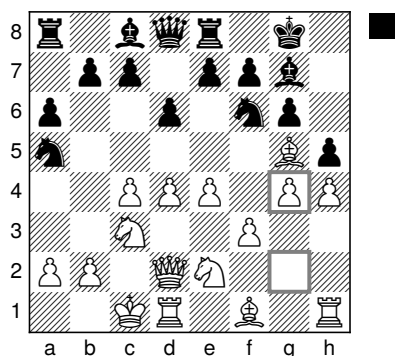
This line was a thematic continuation of games 65 and 66 in the Season 21 SuFi.¹² I’d noticed then that Leela (in my view) tended to underestimate White’s kingside chances in these lines. 8... ♗d7 as in Season 21 SuFi was still a reasonably major line; **8... ♖e8** is much more unusual: I saw it first in a 1980s book by IM John Watson. (I still remember coming across it 25 years ago in the Foyles bookshop in central London!) The line had scored heavily for White in my engine matches, but unfortunately, it seems that Komodo had been talking to

¹²<https://tcecchess.com/#div=sf&game=66&season=21>

Leela and chose the very tame **9. ♖h6** (it had oscillated between the aggressive 9. h4 and 9. ♖h6 in my engine matches) after which White's advantage was minimal. Stockfish had no difficulty holding the draw.

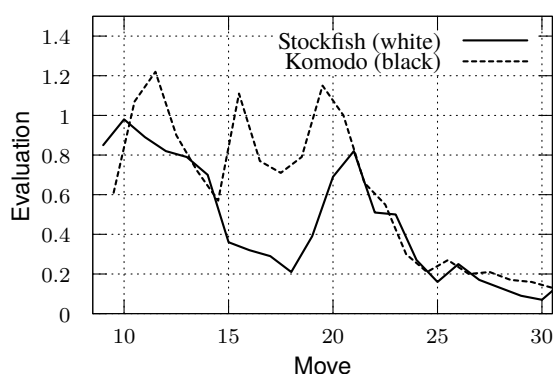
Stockfish—Komodo Dragon 0.5–0.5

Stockfish kept the chat entertained by punting **9. h4**, and the game became extremely sharp, extremely quickly, as Stockfish sacrificed two pawns (one with tempo) after **11. g4**.



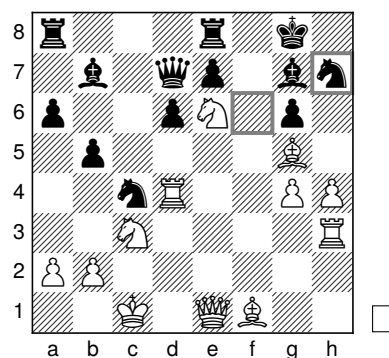
Stockfish—Komodo Dragon after 11. g2–g4

Stockfish's early optimism once again melted away before recovering again... despite Komodo playing all the moves Stockfish expected!



Game 78 engine evaluations (moves 9–30)

In the end, however, Stockfish gravitated to seeing Komodo's main line as the best defence, and its evaluation went down accordingly.



Stockfish—Komodo Dragon after 19... ♖f6–h7

The resulting tactical melee looked horribly dangerous for Black, but both engines were unmoved. Another double draw for me.

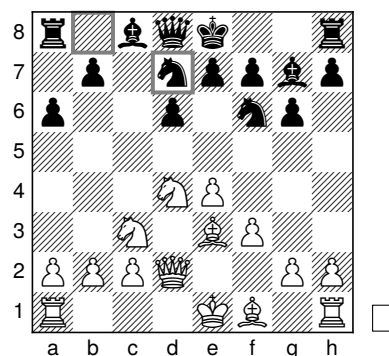
Engine	Pair score	Current score	Pair wins
Komodo Dragon	1 (+0 =2 -0)	30.5 (+7)	0
Stockfish	1 (+0 =2 -0)	47.5 (+24)	17
Pair result	Double draw		
Book score	Matthew–Jeroen 7–10		

Game links:

<https://tcec-chess.com/#div=sf&game=77&season=22>
<https://tcec-chess.com/#div=sf&game=78&season=22>

Games 79–80 Sicilian, Dragondorf (B75)

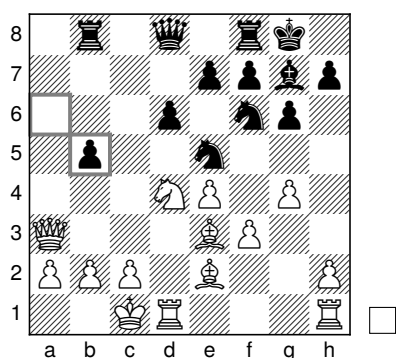
Book moves (Jeroen): **1. e4 c5 2. ♖f3 d6 3. d4 cxd4 4. ♖xd4 ♖f6 5. ♖c3 g6 6. ♖e3 ♖g7 7. f3 a6 8. ♖d2 ♖bd7**



Book exit

Komodo Dragon—Stockfish 1–0

“Next up: a dodgy Sicilian,” announced Jeroen towards the end of the previous game, and the Stockfish devs twitched their noses and perked up their ears scenting another game pair victory! The opening phase was pretty rough for Stockfish, but as CatoTheYounger pointed out, it was Komodo that varied from the earlier Season 21 InfraFinal Stoofvlees–Komodo...



Komodo Dragon—Stockfish after 16... a6xb5

...where Stoofvlees had played 17. g5 and beaten Komodo! Komodo’s 17. ♖xb5 looked just as strong, however, picking up an exchange. Although the evaluations sagged back to +1.2 at times, Stockfish also regularly lapsed into +1.6 levels of depression! Komodo has been impressive at grinding Stockfish into dust from positions where Stockfish has little counterplay, and it repeated the trick here to score its 8th win! Could it hold the reverse for a first game pair win?

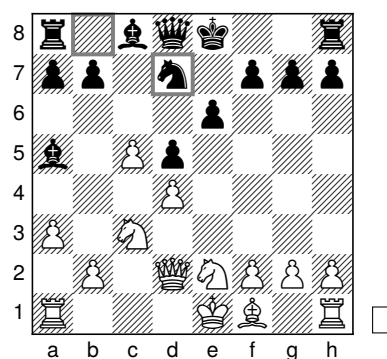
Stockfish—Komodo Dragon 1–0

The game followed the course of the previous one pretty closely. Komodo probably did a better job of keeping Black’s position afloat. But it was always unlikely to be successful, and Stockfish won convincingly in the end.

Engine	Pair score	Current score	Pair wins
Komodo Dragon	1 (+1 =0 -1)	31.5 (+8)	0
Stockfish	1 (+1 =0 -1)	48.5 (+25)	17
Pair result	Reverse kill		
Book score	Matthew–Jeroen 7–10		
Game links:			
https://tcec-chess.com/#div=sf&game=79&season=22			
https://tcec-chess.com/#div=sf&game=80&season=22			

Games 81–82 Nimzo-Indian (E42)

Book moves (Matthew): 1. d4 ♖f6 2. c4 e6 3. ♘c3 ♙b4 4. e3 c5 5. ♘e2 cxd4 6. exd4 d5 7. c5 ♘e4 8. ♙d2 ♖xd2 9. ♙xd2 ♙a5 10. a3 ♘d7

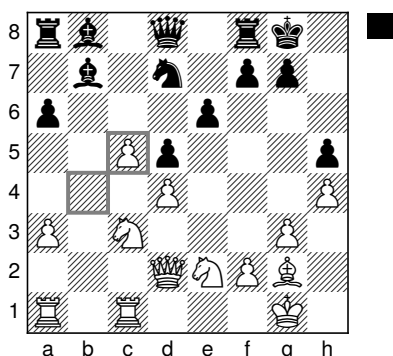


Book exit

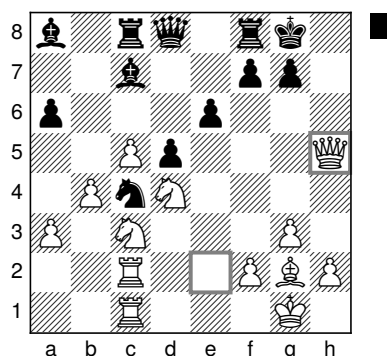
Komodo Dragon—Stockfish 0.5–0.5

This opening was taken from one of my games of which the last 20 moves were a sequence of time-trouble-induced appalling mutual tactical mistakes until I somehow emerged victorious!¹³ Although the engine evaluations were relatively low, the possibility of imbalance due to White’s huge queenside space advantage convinced me to give this a punt. I was a bit disappointed that Komodo ended up recapturing on c5 with the b-pawn...

¹³<https://www.chessgames.com/perl/chessgame?gid=1740936>



Komodo Dragon—Stockfish after 19. b4xc5



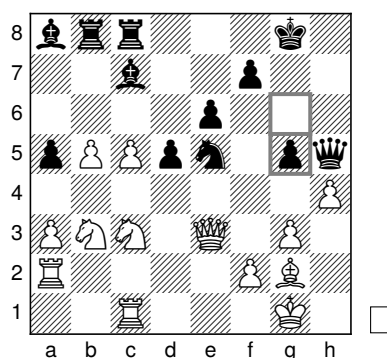
Stockfish—Komodo Dragon after 22. ♖e2xh5

...as I felt that this structure would not give White any special chances. So it proved, Stockfish drawing the game fairly comfortably.

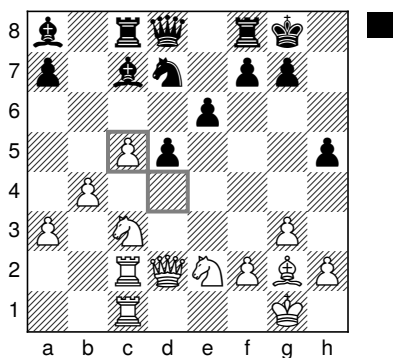
...and then again, just when it looked that White's queenside pawns were starting to roll, the g-pawn was offered!

Stockfish—Komodo Dragon 0.5–0.5

Stockfish recaptured on c5 with the d-pawn...



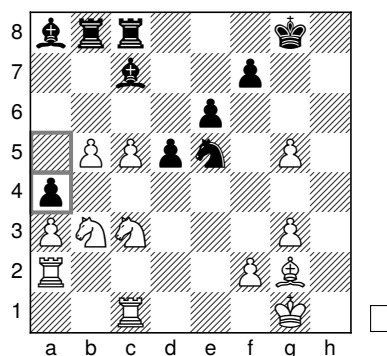
Stockfish—Komodo Dragon after 30... g6–g5



Stockfish—Komodo Dragon after 19. d4xc5

The crazy tactics continued...

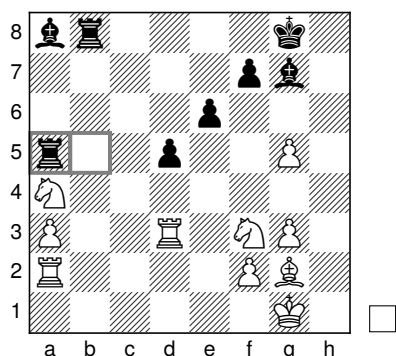
...and this was much more what I was thinking of. I had seen plenty of positions where the pawns advance to b5 and c6, shutting out the bishop on a8.



Stockfish—Komodo Dragon after 32... a5–a4

Komodo defended remarkably well, sacrificing the h-pawn to gain time for a knight transfer to c4...

...culminating in a clever knight trap on the side of the board:



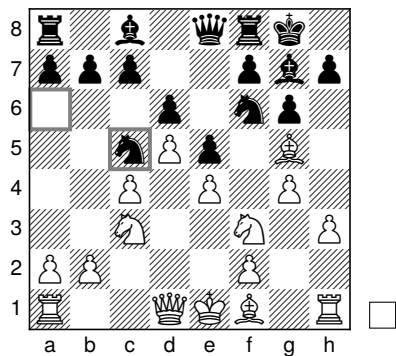
Stockfish—Komodo Dragon after 38... ♖b5-a5

Stockfish still had a slight initiative but not enough to win! A phenomenal defensive performance from Komodo!

Engine	Pair score	Current score	Pair wins
Komodo Dragon	1 (+0=2-0)	32.5 (+8)	0
Stockfish	1 (+0=2-0)	49.5 (+25)	17
Pair result	Double draw		
Book score	Matthew–Jeroen 7–10		
Game links:			
https://tcec-chess.com/#div=sf&game=81&season=22			
https://tcec-chess.com/#div=sf&game=82&season=22			

Games 83–84 King’s Indian (E90)

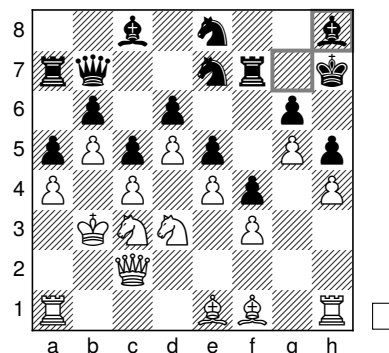
Book moves (Jeroen): 1. d4 ♘f6 2. c4 g6 3. ♘c3 ♗g7 4. e4 d6 5. ♘f3 O-O 6. h3 ♘a6 7. ♗g5 e5 8. d5 ♖e8 9. g4 ♘c5



Book exit

Komodo Dragon—Stockfish 0.5–0.5

Jeroen more or less secured his book makers’ SuFi title with this challenging Makogonov system against the King’s Indian! Komodo didn’t quite manage to keep the position open...



Komodo Dragon—Stockfish after 33... ♗g7-h8

...which led to this tweet...

Matthew Sadler
@gmmnds

Well... Don't know about you, but I don't think much is going to happen 😬
<https://tcec-chess.com>

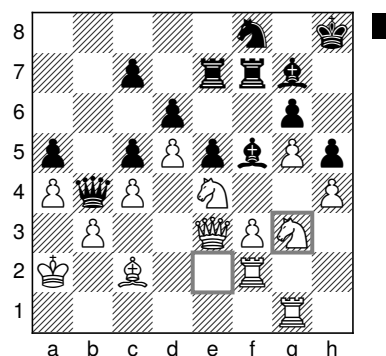
Apr 20, 2022
<https://twitter.com/gmmnds/status/1516752197366734850>

...and this reply!

Anish Giri
 @anishgiri
 Replying to @gmmds and @erwinlami

looks completely winning for white, just prepare a sac on e5 🔥

Apr 20, 2022
<https://twitter.com/anishgiri/status/1516759457887358976>



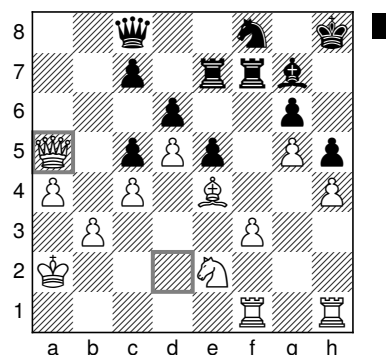
Stockfish—Komodo Dragon after 43. ♖e2–g3

However, it wasn't to be!

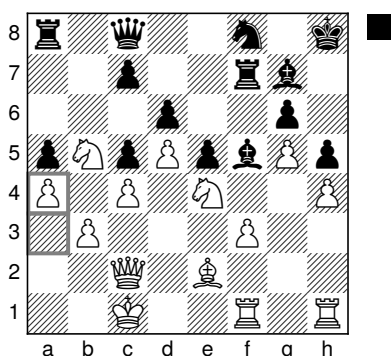
After Komodo gave up its a-pawn... (almost in disgust you felt!)

Stockfish—Komodo Dragon 1–0

Once again, Stockfish proved superior in blocked positions. There was a remarkable moment when Stockfish took the decision to fossilise the queenside with 27. ♕×c5 and 28. a4, essentially claiming that it had already collected enough static advantages to win.

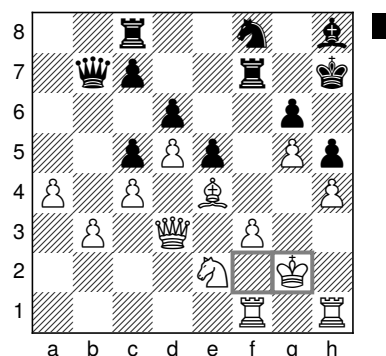


Stockfish—Komodo Dragon after 49. ♖d2×a5



Stockfish—Komodo Dragon after 28. a3–a4

...it was time for Stockfish to show that advanced Petrosian-style human strategy isn't all that difficult.



Stockfish—Komodo Dragon after 57. ♔f2–g2

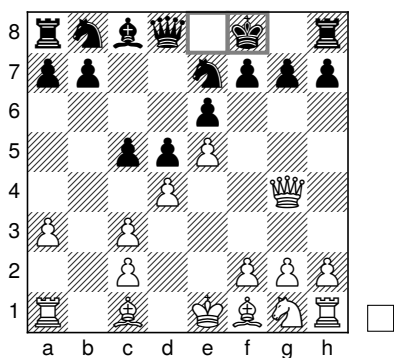
Who dares doubt Stockfish? The lovely plan of transferring the attractively-placed knight on b5 to g3 made Black's wonky kingside creak still more.

This was enough to give Stockfish the Season 22 SuperFinal title! Congratulations to the Stockfish team for another awesome performance!

Engine	Pair score	Current score	Pair wins
Komodo Dragon	0.5 (+0 =1 -1)	33 (+8)	0
Stockfish	1.5 (+1 =1 -0)	51 (+26)	18
Pair result	Decisive pair		
Book score	Matthew–Jeroen 7–11		
Game links:			
https://tcec-chess.com/#div=sf&game=83&season=22			
https://tcec-chess.com/#div=sf&game=84&season=22			
Video link:			
https://youtu.be/TF1hE_9ITEs			

Games 85–86 French, Winawer (C19)

Book moves (Matthew): 1. e4 e6 2. d4 d5 3. ♘c3 ♙b4 4. e5 c5 5. a3 ♙xc3+ 6. bxc3 ♘e7 7. ♔g4 ♙f8



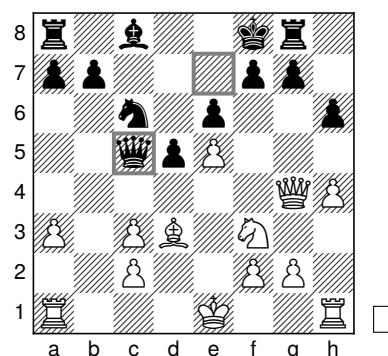
Book exit

Komodo Dragon—Stockfish 0.5–0.5

Newly-crowned TCEC Season 22 SuperFinal champion Stockfish had a “Nikolić French Winawer” to defend in the next game. French aficionado Predrag Nikolić had a predilection for playing ... ♙f8 to counter White’s attack on the g7-pawn with ♔g4, famously losing a brutal game to Garry Kasparov at the 1994 Intel Rapid¹⁴ in this very line. Komodo played the surprising 8. ♙d3 which it had never played before in any of my engine matches. We transposed into a

¹⁴<https://www.chessgames.com/perl/chessgame?gid=1070761>

McCutcheon-type position in which White still had the opportunity to castle kingside instead of having its king on d2.

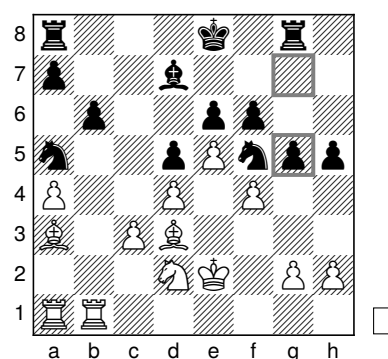


Komodo Dragon—Stockfish after 13... ♙e7xc5

However, this seemed to make no difference. After grabbing a pawn on c3 and then returning it to break White’s initiative, Stockfish was already displaying 0.00.

Stockfish—Komodo Dragon 0.5–0.5

Stockfish thankfully chose the more critical 8. a4 (8. ♙d1 and Kasparov’s 8. h4 were the other continuations), and both engines had evaluations of 1.01 and 1.09, respectively, out of book, which gave some hope for a decisive result! Both engines steered for an endgame which looked uncomfortable for Black due to its restricted king. But Komodo’s unexpected but strong defence 21... g5...



Stockfish—Komodo Dragon after 21... g7–g5

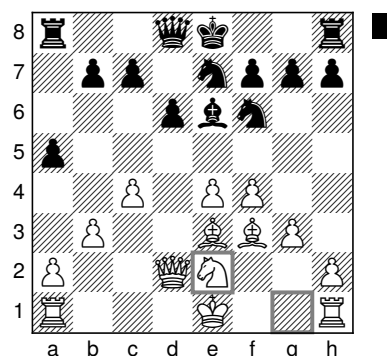
...caused Stockfish’s evaluation to drop suddenly from 1.00 to 0.59. The resulting endgame position

was still irritating for Black, but Komodo had no difficulty holding.

Engine	Pair score	Current score	Pair wins
Komodo Dragon	1 (+0 =2 -0)	34 (+8)	0
Stockfish	1 (+0 =2 -0)	52 (+26)	18
Pair result	Double draw		
Book score	Matthew–Jeroen 7–11		

Game links:

<https://tcec-chess.com/#div=sf&game=85&season=22>
<https://tcec-chess.com/#div=sf&game=86&season=22>

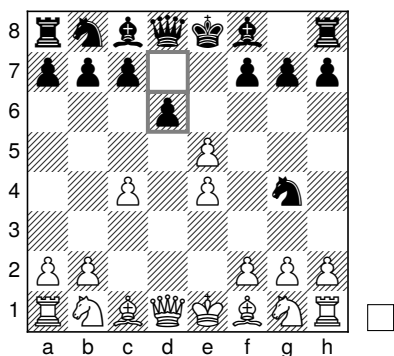


Komodo Dragon—Stockfish after 15. ♖g1–e2

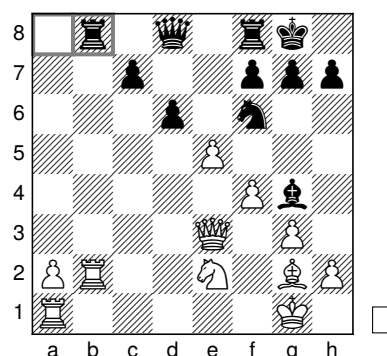
However, Stockfish balanced on a ridiculously implausible tactical tightrope and emerged, as always, approximately in drawing shape!

Games 87–88 Budapest Gambit (A52)

Book moves (Jeroen): 1. d4 ♖f6 2. c4 e5 3. d×e5 ♗g4 4. e4 d6



Book exit



Komodo Dragon—Stockfish after 24... ♖a8–b8

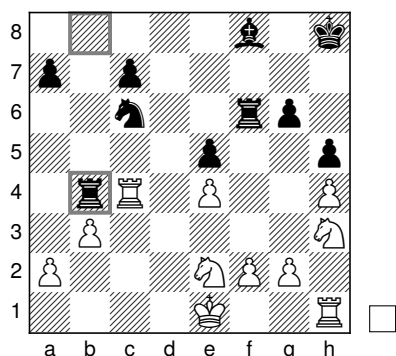
25. ♖×b8 ♕×b8 26. e×f6 ♖e8 recovering the piece was Stockfish’s justification for a tactical sequence begun long before!

Komodo Dragon—Stockfish 0.5–0.5

Jeroen once again found an interesting Budapest line to punt. Black would be so happy to see White accept the pawn sacrifice with 5. e×d6, but 5. ♗e2 rather dampens Black’s fun! Komodo emerged with a lovely position in complete control with a central bind and the 2 bishops:

Stockfish—Komodo Dragon 0.5–0.5

Impressively, Komodo also managed to hold this very difficult opening, steering the play into a pawn-down endgame with plenty of play.



Stockfish—Komodo Dragon after 24... ♖b8-b4

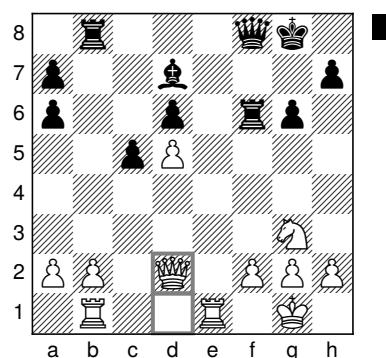
Engine	Pair score	Current score	Pair wins
Komodo Dragon	1 (+0=2-0)	35 (+8)	0
Stockfish	1 (+0=2-0)	53 (+26)	18
Pair result	Double draw		
Book score	Matthew–Jeroen 7–11		

Game links:

<https://tcec-chess.com/#div=sf&game=87&season=22>

<https://tcec-chess.com/#div=sf&game=88&season=22>

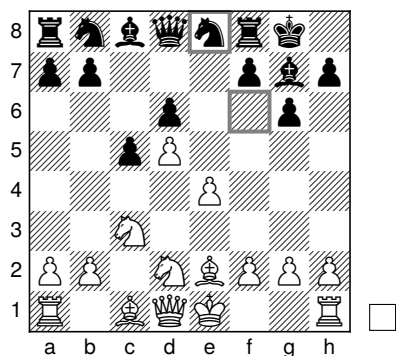
perfect line for the SuperFinal! Komodo Dragon started at 1.11 and climbed to 1.37 by move 16. All the engines wanted to clarify the position to a middlegame where Black, in addition to the weak d6-pawn, also had doubled a-pawns to contend with.



Komodo Dragon—Stockfish after 21. ♖d1-d2

Games 89–90 Modern Benoni (A61)

Book moves (Matthew): 1. d4 ♖f6 2. c4 c5 3. d5 e6 4. ♘c3 exd5 5. cxd5 d6 6. ♘f3 g6 7. ♘d2 ♗g7 8. e4 O-O 9. ♗e2 ♘e8



Book exit

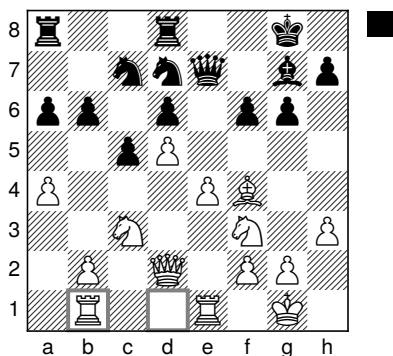
Komodo Dragon—Stockfish 0.5–0.5

The next opening was a Modern Benoni line that was recommended for Black in a recent book. My engines weren't too keen, so that seemed like a

From a human point of view, it looked very comfortable for White, though you wondered whether there might have been something more cutting than a series of exchanges. Stockfish looked very comfortable defending, and the game was drawn in 58 moves.

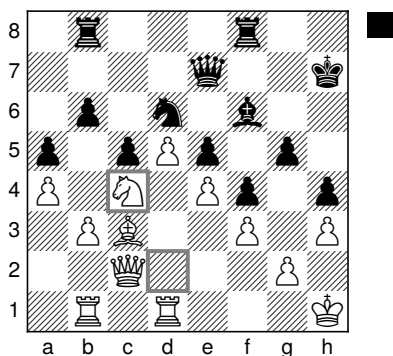
Stockfish—Komodo Dragon 1–0

This was another epic! I had high hopes of breaking my run of 5 consecutive drawn game pairs. But I was a bit disgruntled with Stockfish's opening play which didn't really seem to exploit Black's 9th move, heading instead for a pretty standard Modern Benoni position in which White has a set of small advantages but Black is not under any immediate danger.



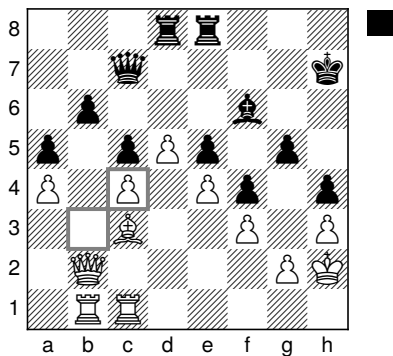
Stockfish—Komodo Dragon after 19. ♖d1–b1

Komodo managed to set up a fairly impregnable-looking position, and after the plan of 33...h5 and 34...h4 shut off any possibility of kingside breaks, I assumed that the position was drawn despite the high evaluations of all the engines: Stockfish and Komodo were at 1.4 or above, and Leela was at 0.87.



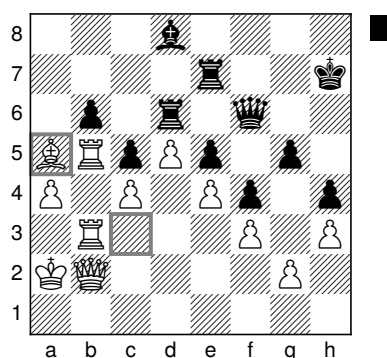
Stockfish—Komodo Dragon after 40. ♘d2–c4

At move 43, Komodo let itself be pushed into capturing on c4.



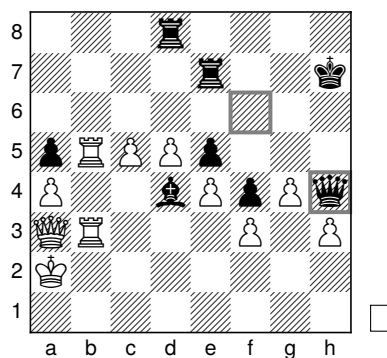
Stockfish—Komodo Dragon after 44. b3×c4

This made Black's position look riskier—the b6-pawn can now be attacked by all of White's major pieces, and there were ideas of sacrificing on a5 or c5—but it felt unlikely that this would be enough for victory. However, we once again got the same effect of Stockfish's and Komodo's evaluations rising while shuffling aimlessly! Eventually, with Stockfish on increments, Stockfish struck with 75. ♙×a5!



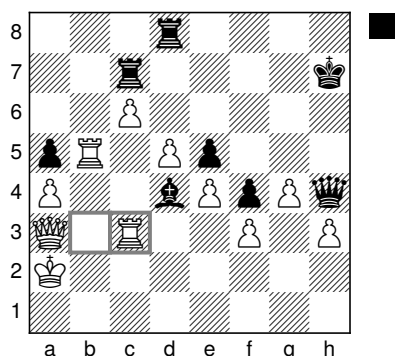
Stockfish—Komodo Dragon after 75. ♙c3×a5

The resulting positions looked scary for White to me, as the black dark-squared bishop became active on d4. But Stockfish (of course) had seen further.

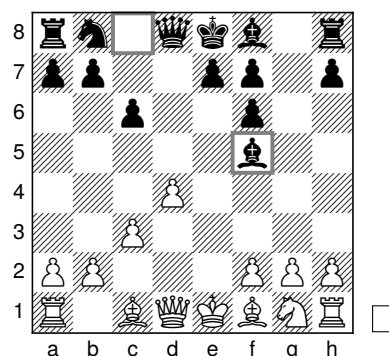


Stockfish—Komodo Dragon after 81... ♗f6–h4

Or had it? After its 83rd move (83. ♖c3) offering a rook for the dangerous bishop on d4, Stockfish's evaluation dropped like a stone to just 0.45.

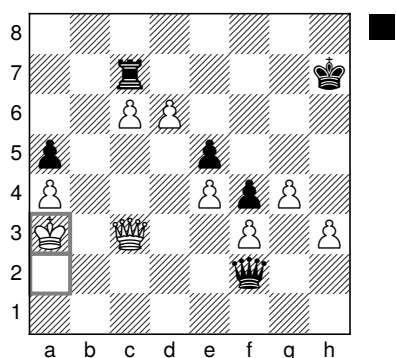


Stockfish—Komodo Dragon after 83. ♖b3-c3



Book exit

However, after Komodo's next move, it was back up and rising, and there were no more thrills in the rest of the game as Stockfish finished efficiently.



Stockfish—Komodo Dragon after 89. ♖a2-a3

Komodo Dragon—Stockfish 0.5–0.5
Stockfish—Komodo Dragon 0.5–0.5

The chat was full of speculation about whether Stockfish would be able to break or equal the record of 23 game pair wins achieved in Season 12. With the score at 19, equalisation seemed difficult but not impossible, as the remaining openings were high bias. Here Jeroen harked back to the old style Caro-Kann with 4... ♖f6 and 5... gxf6 pioneered by Nimzowitsch, and espoused by original spirit, English GM Tony Miles (who scored one of his two wins over Karpov with it!) in the 1980s. Despite the +1 evaluations, it proved extremely resilient in both games, Stockfish gradually whittling down Komodo's advantage in the course of middlegame, and Komodo surviving what I thought should be a tricky queenless middlegame with relative ease.

Engine	Pair score	Current score	Pair wins
Komodo Dragon	0.5 (+0 =1 -1)	35.5 (+8)	0
Stockfish	1.5 (+1 =1 -0)	54.5 (+27)	19
Pair result	Decisive pair		
Book score	Matthew–Jeroen 8–11		
Game links:			
https://tcec-chess.com/#div=sf&game=89&season=22			
https://tcec-chess.com/#div=sf&game=90&season=22			

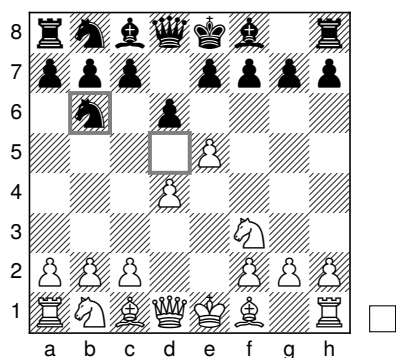
Engine	Pair score	Current score	Pair wins
Komodo Dragon	1 (+0 =2 -0)	36.5 (+8)	0
Stockfish	1 (+0 =2 -0)	55.5 (+27)	19
Pair result	Double draw		
Book score	Matthew–Jeroen 8–11		
Game links:			
https://tcec-chess.com/#div=sf&game=91&season=22			
https://tcec-chess.com/#div=sf&game=92&season=22			

Games 91–92 Caro-Kann (B16)

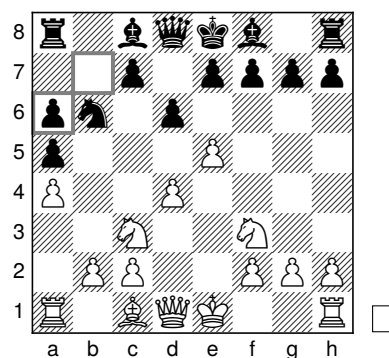
Book moves (Jeroen): 1. e4 c6 2. d4 d5 3. ♘c3 dxe4 4. ♘xe4 ♘f6 5. ♘xf6+ gxf6 6. c3 ♗f5

Games 93–94 Alekhine's Defence (B04)

Book moves (Matthew): 1. e4 ♘f6 2. e5 ♘d5 3. d4 d6 4. ♘f3 ♘b6



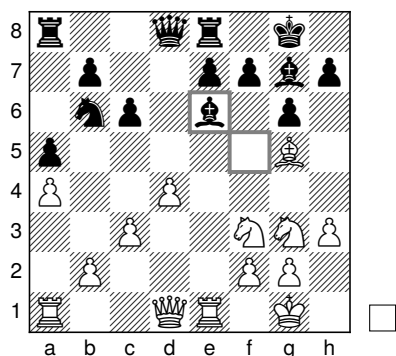
Book exit



Stockfish—Komodo Dragon after 7... b7xa6

Komodo Dragon—Stockfish 0.5–0.5

An Alekhine Defence—and then a bad one! That sounded like a decent recipe for a decisive pair! Komodo emerged with a reasonable opening advantage and punted an exchange sacrifice when Stockfish dangled 17... ♗e6 in front of its fiery eyes:



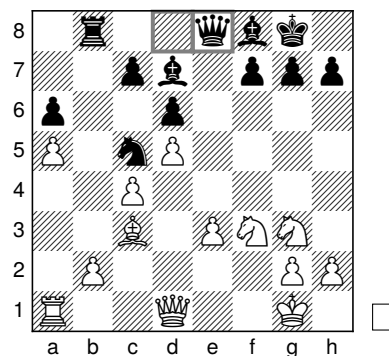
Komodo Dragon—Stockfish after 17... ♗f5-e6

White had a pleasant initiative, but Stockfish rigorously opened lines and exchanged pawns on the queenside to give its major pieces some activity and, once again, steered its disadvantage into the quiet harbour of a draw.

Stockfish—Komodo Dragon 0.5–0.5

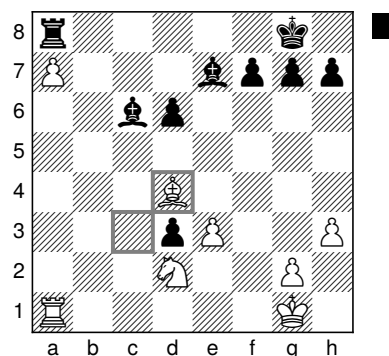
Stockfish made a better stab at a White advantage in this game, quickly wrecking Black's structure... (though, I'm not entirely sure why 7... bxa6 was the unanimous choice of all the engines!)

...and then establishing a solid central presence. Komodo jettisoned one of its a-pawns and tried to survive a pawn down with the 2 bishops as some compensation.



Stockfish—Komodo Dragon after 20... ♖d8-e8

A sharp queenside thrust by Stockfish created a strong passed pawn on a7...



Stockfish—Komodo Dragon after 31. ♗c3-d4

...but Komodo was unconcerned, and Stockfish gradually came to share its opinion!

Engine	Pair score	Current score	Pair wins
Komodo Dragon	1 (+0 =2 -0)	37.5 (+8)	0
Stockfish	1 (+0 =2 -0)	56.5 (+27)	19
Pair result	Double draw		
Book score	Matthew–Jeroen 8–11		
Game links:			
	https://tcec-chess.com/#div=sf&game=93&season=22		
	https://tcec-chess.com/#div=sf&game=94&season=22		

Simon Williams
@ginger_gm
Replying to @gmmds

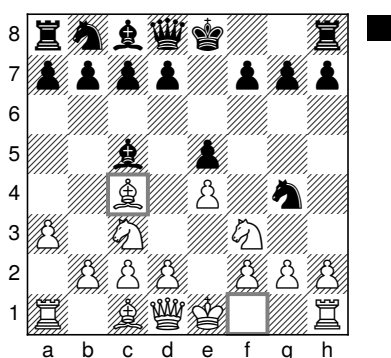


The King will of course end up on a2.

Apr 22, 2022
https://twitter.com/ginger_gm/status/1517479665321000961

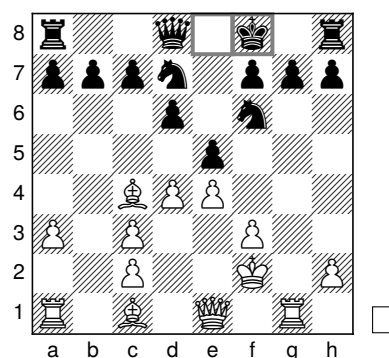
Games 95–96 Vienna (Reverse Traxler) (C26)

Book moves (Jeroen): 1. e4 e5 2. ♖c3 ♜f6 3. a3 ♙c5 4. ♜f3 ♜g4 5. ♙c4



Book exit

Stockfish didn't make a great go of this as Black. 6... ♙d4, followed by trading both of Black's bishops for White's knights, gave White a reasonable-looking position...



Komodo Dragon—Stockfish after 13... ♙e8–f8

Komodo Dragon—Stockfish 0.5–0.5

We have seen the crazy Traxler before in the TCEC SuperFinals (rumour has it that Leela's top fan mrbdzz sleeps on a cushion embroidered with the position after Leela's 6th move novelty^{15,16}) but never quite like this! Would the extra move 3. a3 help White at all? One GM had no doubt!

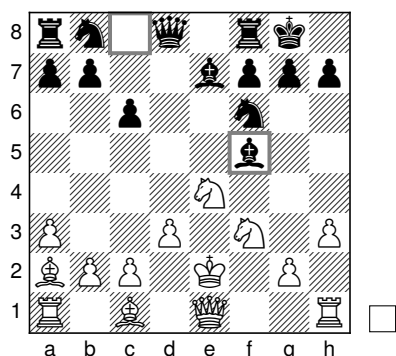
¹⁵This rumour has to be taken with a grain of salt. (*Editor*)

¹⁶<https://tcec-chess.com/#div=sf&game=92&season=17>

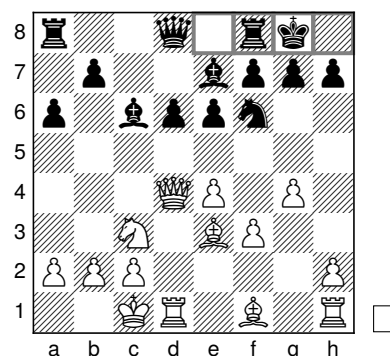
...and Komodo never looked in danger of losing.

Stockfish—Komodo Dragon 0.5–0.5

This felt like Komodo's best—probably last—chance to score a game pair win in this SuFi, and the TCEC channel points bettors joined in the fun with some wild stakes! Stockfish's position looked disgusting...

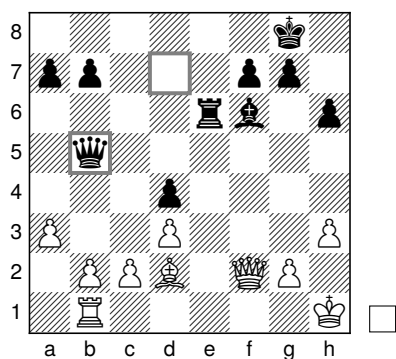


Stockfish—Komodo Dragon after 13... ♙c8-f5



Book exit

...but Stockfish rolled with the punches and managed to stagger out to a worse but clearly tenable middlegame...



Stockfish—Komodo Dragon after 27... ♚d7-b5

...which it of course proceeded to hold!

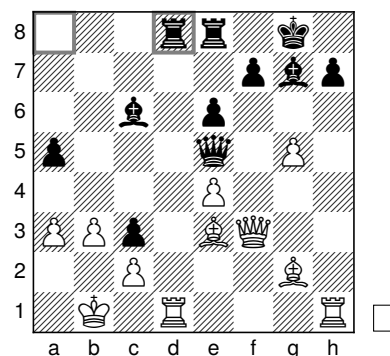
Engine	Pair score	Current score	Pair wins
Komodo Dragon	1 (+0=2-0)	38.5 (+8)	0
Stockfish	1 (+0=2-0)	57.5 (+27)	19
Pair result	Double draw		
Book score	Matthew–Jeroen 8–11		
Game links:			
https://tcec-chess.com/#div=sf&game=95&season=22			
https://tcec-chess.com/#div=sf&game=96&season=22			

Games 97–98 Sicilian, Rauzer (B67)

Book moves (Matthew): 1. e4 c5 2. ♘f3 d6 3. d4 cxd4 4. ♘xd4 ♘f6 5. ♘c3 ♘c6 6. ♙g5 e6 7. ♚d2 a6 8. O-O-O ♙d7 9. f3 ♘xd4 10. ♚xd4 ♙e7 11. g4 ♙c6 12. ♙e3 O-O

Komodo Dragon—Stockfish 0.5–0.5
Stockfish—Komodo Dragon 0.5–0.5

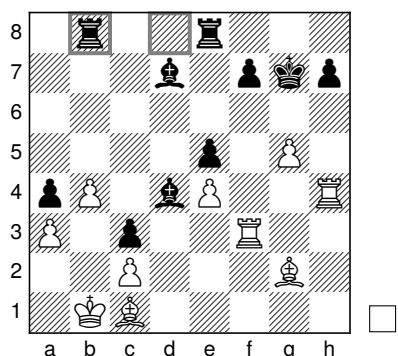
“FYI: next line is 1. e4, 12 moves, SALC¹⁷ position” was Jeroen’s clue for the next game, and the Sicilian Dragon was a popular guess. However for this game, I looked back to some of the ropey Rauzer lines I’d discovered while preparing the Season 21 SuperFinal book! The evaluations—not for the first time this SuperFinal—were a little lower than I was expecting. However, Komodo’s evaluations picked up as we followed one of my Komodo Dragon–Stockfish engine matches to considerable depth. The first key moment was when Stockfish chose 25... ♖ad8:



Komodo Dragon—Stockfish after 25... ♖a8-d8

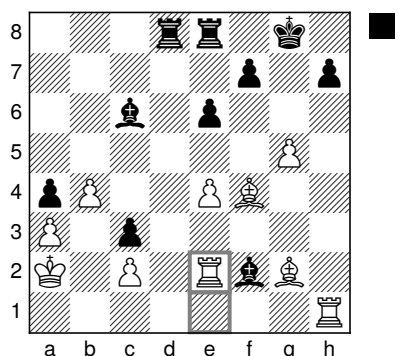
(25... ♙ed8 had worked less well in another Komodo Dragon–Stockfish game.) We only left my engine games after 36... ♚b8!

¹⁷short and long castling



Komodo Dragon—Stockfish after 36... ♖d8-b8

Komodo considered it had the advantage, but not enough to make an impression on Stockfish, and the game was drawn on the 70th move. Komodo had chosen a completely different scheme of defence in my engine matches, but unfortunately, it had upgraded its defensive approach in the meantime and chose exactly the same line as Stockfish! Stockfish deviated with 32. ♖e2...



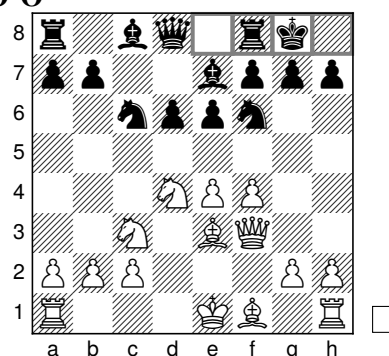
Stockfish—Komodo Dragon after 32. ♖e1-e2

...but that made no difference to the result!

Engine	Pair score	Current score	Pair wins
Komodo Dragon	1 (+0 =2 -0)	39.5 (+8)	0
Stockfish	1 (+0 =2 -0)	58.5 (+27)	19
Pair result	Double draw		
Book score	Matthew-Jeroen 8-11		
Game links:	https://tcec-chess.com/#div=sf&game=97&season=22 https://tcec-chess.com/#div=sf&game=98&season=22		

Games 99-100 Sicilian, Scheveningen (B82)

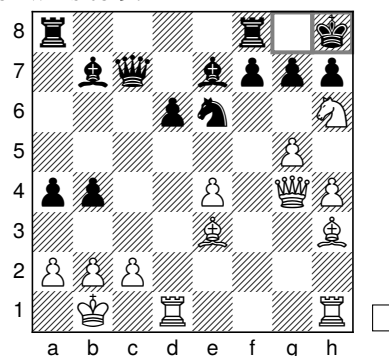
Book moves (Jeroen): 1. e4 c5 2. ♘f3 ♘c6 3. d4 c×d4 4. ♘×d4 e6 5. ♘c3 d6 6. ♗e3 ♘f6 7. f4 ♗e7 8. ♚f3 O-O



Book exit

Komodo Dragon—Stockfish 1-0

The final game pair witnessed another risky Sicilian which allowed Komodo to finish its SuperFinal with a flourish and a final win bringing its total number of wins to 9!



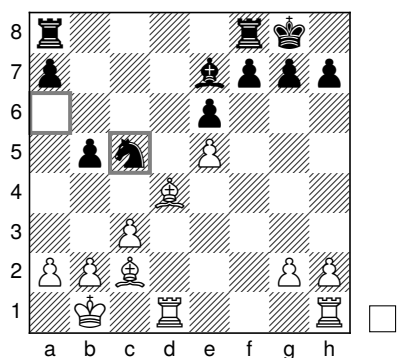
Komodo Dragon—Stockfish after 24... ♖g8-h8

Would a miracle take place in the reverse to give Komodo its first game pair win in the last game of the match?

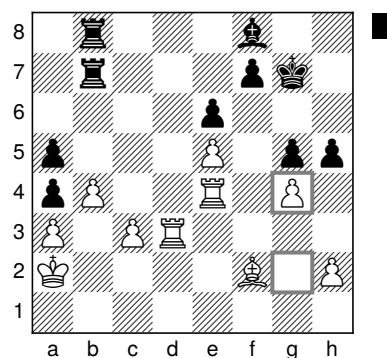
Stockfish—Komodo Dragon 1-0

Komodo at least managed to get out of the opening alive, reaching an ending that was certainly exceedingly unpleasant but where hope still lived of the ultimate escape!

TCEC Season 22 SuperFinal: Komodo Dragon vs Stockfish

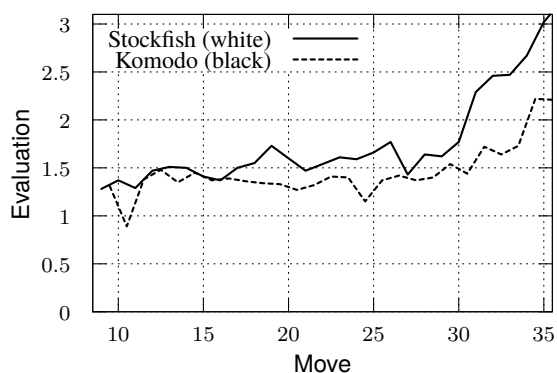


Stockfish—Komodo Dragon after 21... ♖a6-c5



Stockfish—Komodo Dragon after 34. g2-g4

The evaluations were high but flatlining a little...



Game 100 engine evaluations (moves 9–35)

...but hope was short-lived and Stockfish's evaluation suddenly jumped.

And so Stockfish finished the match losing not a single game pair. An astonishing result and a record!

Engine	Pair score	Current score	Pair wins
Komodo Dragon	1 (+1 =0 -1)	40.5 (+9)	0
Stockfish	1 (+1 =0 -1)	59.5 (+28)	19
Pair result	Reverse kill		
Book score	Matthew–Jeroen 8–11		

Game links:
<https://tcec-chess.com/#div=sf&game=99&season=22>
<https://tcec-chess.com/#div=sf&game=100&season=22>

Match Summary

Pair	Result	Book by	Score MS-JN	Game	Match	Result	W eval	B eval	Wins MS-JN
1	Decisive	Matthew	1-0	1	KD-SF	½-½	1.10	1.17	0-0
				2	SF-KD	1-0	1.20	1.01	1-0
2	Decisive	Jeroen	1-1	3	KD-SF	½-½	1.10	0.92	1-0
				4	SF-KD	1-0	1.06	1.01	1-1
3	Decisive	Matthew	2-1	5	KD-SF	½-½	1.35	1.22	1-1
				6	SF-KD	1-0	1.26	1.24	2-1
4	Double draw	Jeroen	2-1	7	KD-SF	½-½	-0.76	-1.14	2-1
				8	SF-KD	½-½	-1.01	-0.84	2-1
5	Reverse kill	Matthew	2-1	9	KD-SF	1-0	1.47	1.25	3-1
				10	SF-KD	1-0	1.40	1.50	4-1
6	Decisive	Jeroen	2-2	11	KD-SF	½-½	1.09	1.06	4-1
				12	SF-KD	1-0	1.04	1.11	4-2
7	Double draw	Matthew	2-2	13	KD-SF	½-½	-1.01	-1.12	4-2
				14	SF-KD	½-½	-1.10	-1.24	4-2
8	Reverse kill	Jeroen	2-2	15	KD-SF	1-0	1.30	1.10	4-3
				16	SF-KD	1-0	1.14	1.12	4-4
9	Decisive	Matthew	3-2	17	KD-SF	½-½	1.28	1.15	4-4
				18	SF-KD	1-0	1.11	1.16	5-4
10	Decisive	Jeroen	3-3	19	KD-SF	½-½	1.17	1.08	5-4
				20	SF-KD	1-0	1.19	1.18	5-5
11	Decisive	Matthew	4-3	21	KD-SF	½-½	1.02	0.88	5-5
				22	SF-KD	1-0	1.08	0.94	6-5
12	Decisive	Jeroen	4-4	23	KD-SF	½-½	1.12	0.89	6-5
				24	SF-KD	1-0	1.09	1.11	6-6
13	Double draw	Matthew	4-4	25	KD-SF	½-½	1.13	0.85	6-6
				26	SF-KD	½-½	1.03	0.93	6-6
14	Reverse kill	Jeroen	4-4	27	KD-SF	1-0	1.35	1.36	6-7
				28	SF-KD	1-0	1.18	1.10	6-8
15	Decisive	Matthew	5-4	29	KD-SF	½-½	1.13	1.10	6-8
				30	SF-KD	1-0	1.12	0.92	7-8
16	Double draw	Jeroen	5-4	31	KD-SF	½-½	1.28	1.00	7-8
				32	SF-KD	½-½	1.17	1.06	7-8
17	Double draw	Matthew	5-4	33	KD-SF	½-½	0.91	0.64	7-8
				34	SF-KD	½-½	0.91	0.78	7-8
18	Decisive	Jeroen	5-5	35	KD-SF	½-½	1.06	1.11	7-8
				36	SF-KD	1-0	1.29	1.04	7-9
19	Double draw	Matthew	5-5	37	KD-SF	½-½	1.04	0.82	7-9
				38	SF-KD	½-½	0.75	0.87	7-9

TCEC Season 22 SuperFinal: Komodo Dragon vs Stockfish

Pair	Result	Book by	Score MS-JN	Game	Match	Result	W eval	B eval	Wins MS-JN
20	Reverse kill	Jeroen	5-5	39	KD-SF	1-0	1.06	1.19	7-10
				40	SF-KD	1-0	1.52	1.17	7-11
21	Double draw	Matthew	5-5	41	KD-SF	½-½	1.05	0.73	7-11
				42	SF-KD	½-½	1.03	0.94	7-11
22	Reverse kill	Jeroen	5-5	43	KD-SF	1-0	0.91	0.91	7-12
				44	SF-KD	1-0	0.97	0.90	7-13
23	Decisive	Matthew	6-5	45	KD-SF	½-½	0.89	0.73	7-13
				46	SF-KD	1-0	0.64	0.87	8-13
24	Decisive	Jeroen	6-6	47	KD-SF	½-½	1.09	1.08	8-13
				48	SF-KD	1-0	1.48	1.17	8-14
25	Double draw	Matthew	6-6	49	KD-SF	½-½	0.95	0.72	8-14
				50	SF-KD	½-½	0.99	1.01	8-14
26	Double draw	Jeroen	6-6	51	KD-SF	½-½	1.02	1.11	8-14
				52	SF-KD	½-½	1.13	1.10	8-14
27	Double draw	Matthew	6-6	53	KD-SF	½-½	0.90	0.62	8-14
				54	SF-KD	½-½	0.51	0.58	8-14
28	Reverse kill	Jeroen	6-6	55	KD-SF	1-0	1.47	1.30	8-15
				56	SF-KD	1-0	1.41	1.31	8-16
29	Double draw	Matthew	6-6	57	KD-SF	½-½	0.81	0.66	8-16
				58	SF-KD	½-½	0.77	0.73	8-16
30	Decisive	Jeroen	6-7	59	KD-SF	½-½	1.22	1.11	8-16
				60	SF-KD	1-0	1.26	1.21	8-17
31	Double draw	Matthew	6-7	61	KD-SF	½-½	0.73	0.91	8-17
				62	SF-KD	½-½	0.76	1.01	8-17
32	Reverse kill	Jeroen	6-7	63	KD-SF	1-0	1.03	0.89	8-18
				64	SF-KD	1-0	1.11	1.11	8-19
33	Decisive	Matthew	7-7	65	KD-SF	½-½	0.87	0.83	8-19
				66	SF-KD	1-0	1.17	0.91	9-19
34	Decisive	Jeroen	7-8	67	KD-SF	½-½	1.04	1.00	9-19
				68	SF-KD	1-0	1.21	1.20	9-20
35	Double draw	Matthew	7-8	69	KD-SF	½-½	0.81	0.68	9-20
				70	SF-KD	½-½	0.76	0.98	9-20
36	Decisive	Jeroen	7-9	71	KD-SF	½-½	1.30	1.27	9-20
				72	SF-KD	1-0	1.32	1.33	9-21
37	Double draw	Matthew	7-9	73	KD-SF	½-½	0.97	0.86	9-21
				74	SF-KD	½-½	0.90	0.95	9-21
38	Decisive	Jeroen	7-10	75	KD-SF	½-½	1.08	1.10	9-21
				76	SF-KD	1-0	1.21	1.11	9-22
39	Double draw	Matthew	7-10	77	KD-SF	½-½	0.67	0.46	9-22
				78	SF-KD	½-½	0.85	0.61	9-22
40	Reverse kill	Jeroen	7-10	79	KD-SF	1-0	1.20	1.49	9-23
				80	SF-KD	1-0	1.26	1.12	9-24

TCEC Season 22 SuperFinal: Komodo Dragon vs Stockfish

Pair	Result	Book by	Score MS-JN	Game	Match	Result	W eval	B eval	Wins MS-JN
41	Double draw	Matthew	7-10	81	KD-SF	½-½	0.81	0.72	9-24
				82	SF-KD	½-½	0.85	0.69	9-24
42	Decisive	Jeroen	7-11	83	KD-SF	½-½	1.10	0.97	9-24
				84	SF-KD	1-0	1.02	1.12	9-25
43	Double draw	Matthew	7-11	85	KD-SF	½-½	0.91	0.64	9-25
				86	SF-KD	½-½	1.01	0.92	9-25
44	Double draw	Jeroen	7-11	87	KD-SF	½-½	1.31	1.31	9-25
				88	SF-KD	½-½	1.32	1.24	9-25
45	Decisive	Matthew	8-11	89	KD-SF	½-½	1.11	1.03	9-25
				90	SF-KD	1-0	1.12	1.17	10-25
46	Double draw	Jeroen	8-11	91	KD-SF	½-½	1.07	0.88	10-25
				92	SF-KD	½-½	0.97	1.03	10-25
47	Double draw	Matthew	8-11	93	KD-SF	½-½	1.07	0.85	10-25
				94	SF-KD	½-½	0.94	1.08	10-25
48	Double draw	Jeroen	8-11	95	KD-SF	½-½	-1.13	-0.90	10-25
				96	SF-KD	½-½	-1.08	-1.14	10-25
49	Double draw	Matthew	8-11	97	KD-SF	½-½	0.91	0.90	10-25
				98	SF-KD	½-½	0.59	0.77	10-25
50	Reverse kill	Jeroen	8-11	99	KD-SF	1-0	1.21	1.03	10-26
				100	SF-KD	1-0	1.28	1.31	10-27

Openings

Pair	ECO	Opening	Book moves
1	C15	French, Winawer, Alekhine (Maroczy) gambit	1. e4 e6 2. d4 d5 3. ♖c3 ♗b4 4. ♗e2 ♗c6 5. a3 ♗a5 6. e5 ♗ge7
2	C65	Ruy Lopez, Berlin defence	1. e4 e5 2. ♗f3 ♗c6 3. ♗b5 ♗f6 4. d3 d6 5. O-O ♗e7 6. ♖e1 O-O 7. c3 ♗d7 8. d4 ♗f6
3	E10	Queen's pawn game	1. d4 ♗f6 2. c4 e6 3. ♗f3 c5 4. d5 d6 5. ♗c3 g6 6. e4 ♗g7 7. h3 O-O 8. ♗d3 ♗a6
4	C42	Petrov, Cochrane gambit	1. e4 e5 2. ♗f3 ♗f6 3. ♗xe5 d6 4. ♗xf7 ♗xf7 5. d4 g6
5	A16	English opening	1. c4 ♗f6 2. ♗c3 g6 3. ♗f3 d5 4. cxd5 ♗xd5 5. h4 ♗f6
6	B90	Sicilian, Najdorf, Byrne (English) attack	1. e4 c5 2. ♗f3 d6 3. d4 cxd4 4. ♗xd4 ♗f6 5. ♗c3 a6 6. ♗e3 e6 7. g4 h6 8. ♖f3 ♖c7
7	C11	French, Steinitz, Boleslavsky variation	1. e4 e6 2. d4 d5 3. ♗c3 ♗f6 4. e5 ♗fd7 5. f4 c5 6. ♗f3 ♗c6 7. ♗e3 ♗e7 8. a3 O-O 9. ♖d2 b6 10. O-O-O
8	B06	Robatsch (modern) defence	1. e4 g6 2. d4 ♗g7 3. ♗c3 d6 4. ♗e3 a6 5. ♖d2 b5 6. h4 h5 7. f3 ♗f6 8. O-O-O ♗c6
9	A40	Queen's pawn, Franco-Indian (Keres) defence	1. d4 e6 2. c4 ♗b4+ 3. ♗d2 ♗xd2+ 4. ♖xd2 b6 5. ♗c3 ♗b7
10	B00	Owen defence	1. e4 b6 2. d4 ♗b7 3. ♗d3 e6 4. ♗f3 c5 5. c3 ♗f6 6. ♖e2
11	E60	King's Indian defence	1. d4 ♗f6 2. c4 g6 3. f3 ♗h5
12	B07	Pirc, Ufimtsev-Pytel variation	1. e4 d6 2. d4 ♗f6 3. ♗c3 c6
13	B01	Scandinavian (centre counter) defence	1. e4 d5 2. exd5 ♖xd5 3. ♗c3 ♖d8 4. d4 ♗f6 5. ♗f3 ♗g4 6. h3 ♗xf3 7. ♖xf3 c6 8. ♗e3 e6
14	A80	Dutch, Korchnoi attack	1. d4 f5 2. h3 ♗f6 3. g4 fxg4 4. hxg4 ♗xg4
15	D52	QGD, Cambridge Springs defence, 7.cd	1. d4 d5 2. c4 e6 3. ♗c3 ♗f6 4. ♗f3 c6 5. ♗g5 ♗bd7 6. e3 ♖a5 7. cxd5 exd5 8. ♗d3 ♗d6
16	E98	King's Indian, orthodox, Aronin-Taimanov, 9.Ne1	1. d4 ♗f6 2. c4 g6 3. ♗c3 ♗g7 4. e4 d6 5. ♗f3 O-O 6. ♗e2 e5 7. O-O ♗c6 8. d5 ♗e7 9. ♗e1 ♗e8 10. ♗e3 f5 11. f3 ♗f6 12. a4 f4
17	B44	Sicilian, Szen, hedgehog variation	1. e4 c5 2. ♗f3 ♗c6 3. d4 cxd4 4. ♗xd4 e6 5. ♗b5 d6 6. c4 a6 7. ♗5c3 ♗f6 8. ♗e2 ♗e7 9. O-O O-O 10. ♗a3 b6 11. ♗e3 ♗d7 12. ♖c1 ♖b8
18	E81	King's Indian, Saemisch, 5...O-O	1. d4 ♗f6 2. c4 g6 3. ♗c3 ♗g7 4. e4 d6 5. f3 O-O 6. ♗e3 ♗bd7 7. ♖d2 a6 8. O-O-O b5
19	A65	Benoni, 6.e4	1. d4 ♗f6 2. c4 c5 3. d5 e6 4. ♗c3 exd5 5. cxd5 d6 6. e4 g6 7. ♗ge2 ♗g7 8. ♗g3 O-O 9. ♗e2 b6
20	E12	Queen's Indian, Petrosian system	1. d4 ♗f6 2. c4 e6 3. ♗f3 b6 4. a3 ♗a6 5. ♖c2 ♗b7 6. ♗c3 c5 7. e4 cxd4 8. ♗xd4 d6 9. ♗e2 ♗e7 10. ♗e3 O-O 11. O-O-O ♗bd7
21	C02	French, advance variation	1. e4 e6 2. d4 d5 3. e5 c5 4. c3 ♗e7 5. ♗f3 ♗ec6
22	C11	French, Steinitz, Boleslavsky variation	1. e4 e6 2. d4 d5 3. ♗c3 ♗f6 4. e5 ♗fd7 5. f4 c5 6. ♗f3 ♗c6 7. ♗e3 ♖b6 8. ♗a4 ♖a5+ 9. c3 b6

TCEC Season 22 SuperFinal: Komodo Dragon vs Stockfish

Pair	ECO	Opening	Book moves
23	B12	Caro-Kann, advance variation	1. e4 c6 2. d4 d5 3. e5 ♟f5 4. ♞f3 e6 5. ♟e2 ♟b4+ 6. ♞bd2 ♞d7 7. O-O ♟a5
24	E87	King's Indian, Saemisch, orthodox, 7.d5	1. d4 ♞f6 2. c4 g6 3. ♞c3 ♟g7 4. e4 d6 5. f3 O-O 6. ♟e3 e5 7. d5 ♞h5 8. ♟d2 ♟h4+
25	C63	Ruy Lopez, Schliemann defence	1. e4 e5 2. ♞f3 ♞c6 3. ♟b5 f5 4. d3 ♞f6 5. exf5 ♞e7
26	A89	Dutch, Leningrad, main variation with Nc6	1. d4 f5 2. ♞f3 ♞f6 3. g3 g6 4. ♟g2 ♟g7 5. c4 d6 6. O-O O-O 7. ♞c3 ♞c6 8. d5 ♞e5 9. ♞xe5 dxe5 10. ♟b3 h6
27	E70	King's Indian, 4.e4	1. d4 ♞f6 2. c4 g6 3. ♞c3 ♟g7 4. e4 O-O 5. f3 c5 6. d5 e6
28	A40	Polish defence	1. d4 b5
29	C88	Ruy Lopez, closed, anti-Marshall 8.a4	1. e4 e5 2. ♞f3 ♞c6 3. ♟b5 a6 4. ♟a4 ♞f6 5. O-O ♟e7 6. ♞e1 b5 7. ♟b3 O-O 8. a4 b4 9. a5 d5
30	E94	King's Indian, orthodox, 7...Nbd7	1. d4 ♞f6 2. c4 g6 3. ♞c3 ♟g7 4. e4 d6 5. ♞f3 O-O 6. ♟e2 e5 7. O-O ♞bd7 8. ♟e3 c6
31	A42	Modern defence, Averbakh system	1. d4 d6 2. e4 g6 3. c4 ♟g7 4. ♞c3 e5 5. d5 f5 6. exf5 gxf5
32	E32	Nimzo-Indian, classical variation	1. d4 ♞f6 2. c4 e6 3. ♞c3 ♟b4 4. ♟c2 O-O 5. e4 ♟xc3+ 6. bxc3 d6
33	A43	Old Benoni defence	1. d4 c5 2. d5 ♞f6 3. ♞c3 g6 4. e4 d6 5. f4
34	A41	Old Indian, Tartakower (Wade) variation	1. d4 d6 2. ♞f3 ♟g4 3. c4 ♞f6 4. ♟b3 ♟c8 5. ♞c3 c6
35	C92	Ruy Lopez, closed, Flohr-Zaitsev system (Lenzerheide variation)	1. e4 e5 2. ♞f3 ♞c6 3. ♟b5 a6 4. ♟a4 ♞f6 5. O-O ♟e7 6. ♞e1 b5 7. ♟b3 d6 8. c3 O-O 9. h3 ♟b7 10. d4 ♞d7 11. ♞bd2 exd4 12. cxd4 ♞e8 13. ♞f1 ♞a5 14. ♟c2 ♟f6 15. ♞b1 c5 16. d5 ♞c4
36	B80	Sicilian, Scheveningen variation	1. e4 c5 2. ♞f3 e6 3. d4 cxd4 4. ♞xd4 ♞f6 5. ♞c3 d6 6. ♟e3 ♟e7 7. g4 h6
37	E45	Nimzo-Indian, 4.e3, Bronstein (Byrne) variation	1. d4 ♞f6 2. c4 e6 3. ♞c3 ♟b4 4. e3 b6 5. ♞e2 ♟a6 6. ♞g3 h5
38	C16	French, Winawer, Petrosian variation	1. e4 e6 2. d4 d5 3. ♞c3 ♟b4 4. e5 ♟d7 5. a3 ♟xc3+ 6. bxc3 b6 7. ♟g4 f5 8. ♟g3 ♟b7 9. a4 ♞c6
39	E81	King's Indian, Saemisch, 5...O-O	1. d4 ♞f6 2. c4 g6 3. ♞c3 ♟g7 4. e4 d6 5. f3 O-O 6. ♟g5 ♞c6 7. ♞ge2 a6 8. ♟d2 ♞e8
40	B75	Sicilian, dragon, Yugoslav attack	1. e4 c5 2. ♞f3 d6 3. d4 cxd4 4. ♞xd4 ♞f6 5. ♞c3 g6 6. ♟e3 ♟g7 7. f3 a6 8. ♟d2 ♞bd7
41	E42	Nimzo-Indian, 4.e3 c5, 5.Ne2 (Rubinstein)	1. d4 ♞f6 2. c4 e6 3. ♞c3 ♟b4 4. e3 c5 5. ♞e2 cxd4 6. exd4 d5 7. c5 ♞e4 8. ♟d2 ♞xd2 9. ♟xd2 ♟a5 10. a3 ♞d7
42	E90	King's Indian, 5.Nf3	1. d4 ♞f6 2. c4 g6 3. ♞c3 ♟g7 4. e4 d6 5. ♞f3 O-O 6. h3 ♞a6 7. ♟g5 e5 8. d5 ♟e8 9. g4 ♞c5
43	C19	French, Winawer, advance, poisoned pawn variation	1. e4 e6 2. d4 d5 3. ♞c3 ♟b4 4. e5 c5 5. a3 ♟xc3+ 6. bxc3 ♞e7 7. ♟g4 ♟f8

TCEC Season 22 SuperFinal: Komodo Dragon vs Stockfish

Pair	ECO	Opening	Book moves
44	A52	Budapest, Alekhine variation, Balogh gambit	1. d4 ♘f6 2. c4 e5 3. d×e5 ♘g4 4. e4 d6
45	A61	Benoni, Nimzovich (knight's tour) variation	1. d4 ♘f6 2. c4 c5 3. d5 e6 4. ♘c3 e×d5 5. c×d5 d6 6. ♘f3 g6 7. ♘d2 ♗g7 8. e4 O-O 9. ♗e2 ♘e8
46	B16	Caro-Kann, Bronstein-Larsen variation	1. e4 c6 2. d4 d5 3. ♘c3 d×e4 4. ♘×e4 ♘f6 5. ♘×f6+ g×f6 6. c3 ♗f5
47	B04	Alekhine's defence, modern, Schmid variation	1. e4 ♘f6 2. e5 ♘d5 3. d4 d6 4. ♘f3 ♘b6
48	C26	Vienna, Mengarini variation	1. e4 e5 2. ♘c3 ♘f6 3. a3 ♗c5 4. ♘f3 ♘g4 5. ♗c4
49	B67	Sicilian, Richter-Rauzer, Rauzer attack, 7...a6 defence, 8...Bd7	1. e4 c5 2. ♘f3 d6 3. d4 c×d4 4. ♘×d4 ♘f6 5. ♘c3 ♘c6 6. ♗g5 e6 7. ♖d2 a6 8. O-O-O ♗d7 9. f3 ♘×d4 10. ♖×d4 ♗e7 11. g4 ♗c6 12. ♗e3 O-O
50	B82	Sicilian, Scheveningen, Tal variation	1. e4 c5 2. ♘f3 ♘c6 3. d4 c×d4 4. ♘×d4 e6 5. ♘c3 d6 6. ♗e3 ♘f6 7. f4 ♗e7 8. ♖f3 O-O