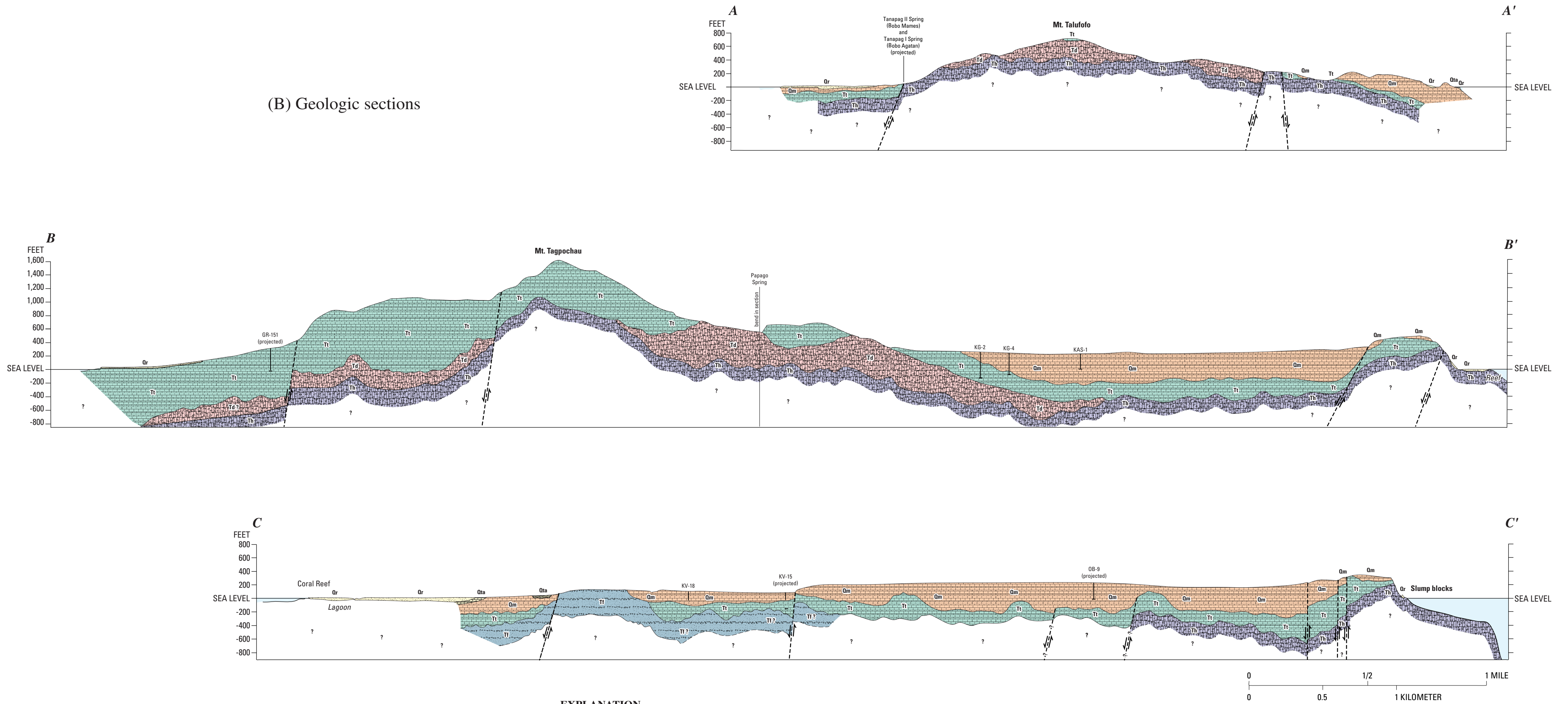


(B) Geologic sections



EXPLANATION

GEOLOGIC UNIT			
SECTION			
	Deposits of Pleistocene and Holocene Age - Emerged limesand, beach, wetland, artificial fill, and volcanic outwash	limestones	
	Tanapag Limestone - Raised fringing-reef limestone, generally below elevations of 100 feet		
	Mariana Limestone - Clastic and reef limestone with argillaceous rubbly facies		
	Tagpochau Limestone - Dominated by a massive, compact, inequigranular pinkish limestone, but also includes rubbly, marly, tuffaceous and transitional carbonate facies		
	Fina-Sisu Formation - Interlayered andesitic marine tuffs and andesite flow rocks		volcanic rocks
	Densinyama Formation - Includes marine transitional rocks and volcanically derived conglomerates, tuffaceous sandstone, and andesitic breccia		
	Hagman Formation - Andesitic breccia, tuff, lava flows, conglomerate, and tuffaceous limestone		
			FAULT - High angle or vertical
			Geologic sections - Arrows show direction of thrust
			SELECTED WELL NEAR SECTION LINE AND NAME
			SELECTED SPRING NEAR SECTION LINE AND NAME

Figure 4. Generalized geology of Saipan, (A) surficial geology, and (B) geologic sections (modified from Cloud and others, 1956).--Continued