



GILGIT-BALTISTAN at a **GLANCE** 2020



Government of Gilgit-Baltistan
Planning & Development Department
Statistical & Research Cell (SRC)



FOREWORD

It is a matter of satisfaction for us that Planning & Development Department has started publication of valuable and vital statistical data on Gilgit Baltistan in a shape of a handy booklet “Gilgit Baltistan at a Glance”. The current issue is second in series for the year 2020. From now onwards, compilation of secondary data shall be a regular yearly feature, Insha'Allah.

“Gilgit Baltistan at a Glance-2020” provides a glimpse of socio economic state of Gilgit Baltistan. It contains diversified secondary data on geography, demography, socio-economic development indicators, physical infrastructure, multidimensional poverty and well being index, Natural Resource Indicators, administrative and political Institutions, telecommunication, tourism as well as it shows development evolution of Gilgit Baltistan through decades since its accession to Pakistan in 1948. In addition, it also indicates baseline for Sustainable Development Goals (SDGs). For the region it would be another endeavor to effectively inch towards evidence based planning.

The data has been gathered from various data sources, ranging from Administrative Federal and Provincial Departments/agencies, official websites, primary data collected by National and International Agencies i.e. MICS, PSLM, LFS etc. I hope this statistical leaflet will best serve the thirst of state functionaries, policy makers, development planners & practitioners, academia and general public at large. Despite absence of Bureau of Statistics and thereof data scientists, utmost efforts are extended for improvement of the booklet.

I would like to express my gratitude for the team work put in by Statistical & Research Cell (SRC), P&DD GB, in compiling and dissemination of the data. The District functionaries, Provincial Administrative departments and Federal agencies also deserve due applause for their cooperation in this regards. Last but not the least, I am indebted for the guidance and support of the Chief Secretary Gilgit-Baltistan, Capt. (Retd.) Muhammad Khurram Agha.

This Booklet is also available on the official website of P&DD GB (www.pnd.gog.pk). Feedback and suggestions for improvement, in this regard, will be welcome.

Syed Abrar Hussain
Additional Chief Secretary (Dev.) GB



POPULATION AND AREA

District	Area Sq.KM	Census 1998			2017		Area Sq.KM
		Population in million	House hold size	Growth Rate	District	Population in million	
Gilgit	4208	0.148	8.1	2.74	Gilgit	0.29	4208
Skardu	19697	0.219	7.8	2.24	Diamer	0.27	7234
Diamer	7234	0.135	8.1	3.13	Skardu	0.26	10168
Ghizer	12381	0.121	9	3.08	Ghizer	0.17	12381
Ghanche	8531	0.090	6.8	1.18	Ghanche	0.16	8531
Astore	5411	0.072	8.9	3.1	Astore	0.10	5411
Hunza-Nagar	15034	0.099	7.7	2.74	Nagar	0.07	4137
					Hunza	0.05	10109
					Shiger	0.07	4173
					Kharmong	0.05	6144
Total GB	72496	0.884	8	2.56		1.49	72496

POPULATION & HOUSEHOLD INDICATORS

	1998 Census	2017
Population	884,000	1492924
Male Population	462,000	773057
Female Population	422,000	719845
Urban Population	127,000	246332 (16.5%)
Rural Population	757,000	1246592 (83.5%)
Density Per Sq Km	12	20.6
Annual Growth Rate	2.56	2.56 (1998)
Sex Ratio (Male per hundred female)	109	107
Average Household Size	08	7.6
Number of Household	110500	196426
Socio Economic Indicators	-	-
% of household having one room for sleeping	-	30
% of household having two & more for sleeping	-	70
% of household having finished roofing	-	63
% of household having finished flooring	-	79
% of household that owns	-	-
i. Television	-	49
ii. Refrigerator	-	22
iii. Computer	-	21
iv. Washing Machine	-	30



% of household where at least one member owns		
I. Mobile telephone	–	92
ii. Car/Van	–	14
iii. Bank Account	–	60
% of ownership of house by households	–	89
Multidimensional poverty (Head count ratio)	–	34.8
% of Access pipe/improved water	34	79
% Population with improved sanitation	–	89
% HH having electricity	60	98
Literacy rate	37.8	53

Source: GB-MICS 2016-17, Government Department Database and projected estimates.

THE MULTIDIMENSIONAL POVERTY INDEX (MPI) GILGIT-BALTISTAN

District/Area	MPI	Head count ratio (H)*	Intensity (A)**
GB	0.179	34.8	51.5
Astore	0.167	35	48.0
Diamer	0.172	74.2	57.8
Chanche	0.429	24	44.4
Ghizer	0.106	14.3	46.2
Gilgit	0.066	17.1	47.5
Hunza	0.081	2	38.0
Kharmong	0.008	34	46.1
Nagar	0.157	15.2	42.9
Shiger	0.065	44.8	47.1
Skardu	0.211	36.1	47.7

Source: GB-MICS 2016-17

* Proportion of population who are multidimensional poor (H)

** Intensity of Poverty (A)

THE MULTIDIMENSIONAL POVERTY INDEX (MPI) GILGIT-BALTISTAN & PAKISTAN- A COMPARISON

District/Area	MPI	Head count ratio (H)	Intensity (A)
Pakistan**	0.197	38.8	50.9
GB*	0.179	34.8	51.5
Punjab	0.152	31.4	48.4
Sindh	0.231	43.1	53.5
KPK	0.250	49.2	50.7
Balochistan	0.394	71.2	55.3
AJK	0.115	24.9	46.3
FATA	0.337	73.7	45.8

** PSLM 2014-15

* GB MICS 2016-17



ADMINISTRATIVE SET UP

S.No.	Admin Units	1998	2017	2020
1	Divisions	01	03	03
2	Districts	05	10	10
3	Sub-Divisions	12	19	20
4	Tehsils	19	31	31
5	Union Council	–	105	113
6	Police Station	60	65	67
7	Prisons (Jails) in GB	05	06	05
8	Total capacity of Jails in GB	500	690	990
9	Four Districts namely Dareil, Tangir, Yasin & Roundu notified, but not functional			

Source: Home Department GB

POLITICAL INSTITUTIONS

S.No.	Institutions	1998	2017	2020
1	GB Council	01	01	01
2	GBLA	-	01	01
3	Municipal Corporation	-	-	03
4	District Councils	05	10	10
5	Municipal Committee	05	10	07
6	Union Councils	-	105	109 (Functional 103)

Source: LG&RD Deptt. GB

AGRI STATISTICS

Area	Area	Unit
Geological Area	72496	Sq km
Cultivated Area	3938.784	Sq km
Cropped Area	893.95	Sq km
Cultivable Waste	3044.832	Sq km
Total Farm Families	162500	Nos.
Total Farm Population	910000	Nos.
Total Farm Size	0.6-0.8	Acres

PRODUCTION & UTILIZATION OF CEREALS & VEGETABLES

Crop	Area (Hac.)	Production(MT)	Consumption(MT)	Marketed(MT)
Wheat	6422	17143	16899	284
Maize	1392	3245	2648	102
Barley	3838	7442	6308	989
Buckwheat	971	1104	1142	367
Potato	3419	29175	9785	40168
Lucerne	291	15149	13547	1464
Tomato	000	2069	907	1173
Peas	000	23	71	143
Others	000	12595	159	129
Total	16333	75350	51466	44818



PRODUCTION & UTILIZATION OF FRUITS

Crop	Production(MT)	% Losses	Consumption(MT)	Marketed(MT)
Apricot	61188	38.10	2256.46	696.47
Apple	6606.12	25.52	3096.58	3045.31
Grapes	1367.41	19.67	102.53	196.92
Pears	395.81	18.91	34.748	118.6
Peaches	414.32	22.67	226.08	10.93
Pomegranate	168.6	26.72	63.60	4.03
Cherry	4499.99	11.10	585.03	217.93
Mulberry	1937.18	58.000	998.72	17.37
Walnut	4177.98	4.30	1002.19	453.42
Almond	660.56	1.91	239.93	117.17
Total	81415.97	20.62	9841.6	4878.15

Source: Agriculture Department GB

PRODUCTION & UTILIZATION OF DRY APRICOT

Dry Apricot	14675	13	5345	7480
-------------	-------	----	------	------

Source: Agri. census GB 2010 by PBS and GB Agriculture Statistical Survey 2014

ECONOMIC TRANSFORMATION INITIATIVE (ETI-GB) PROGRAM

FARM TO MARKET ROAD (FMR)		
	Target	Achievement
No. of FMRs	75	-
Length in KM	400	278
IRRIGATION CHANNELS		
No. of Channels	108	-
Length in KM	600	275
Land Development (Acres)	60,000	49,151
Beneficiaries Household	100,000	-

Source: ETI-GB



FOREST & WILD LIFE

Type of Land	Area (Hectares)/No.	%
Mountain/Lakes/Rivers/Glaciers	4.810	66.3
Forest	0.646	09
(i) Protective (0.065)		
(ii) Private (0.219)		
(iii) Social/Agri/Forest (0.368)		
Range Lands	01.626	22.4
Number of National Parks	07 Nos	-
Number of Wildlife Sanctuaries	02 Nos	-
Number of Game Reserve	05 Nos	-
Community control hunting areas	48 Nos	-

ENDANGERED WILD LIFE POPULATION (2019)

Ibex	Marco Polo Sheep	Snow Leopard	Markhor	Blue Sheep	Ladakh Urial	Brown Bear
15000	80-140	160-230	2075	6900	250	92

LICENSES ISSUED AND ANNUAL EARNING DURING THE YEAR 2018-19

Name of Species Hunted			No. of Hunts			Total hunting Fee	80% Community Share	20% Govt. Share
Ibex	Markhor	Blue Sheep	Foreigner	National	Local(GB)	PKR (M)	PKR (M)	PKR (M)
74	04	08	29	45	12	80.208	64.166	16.041

Source: JSR-2012 & Forest Department, GB

LABOUR FORCE

	National	GB
Overall Participation Rate	44.3%	47.5%
Male Participation Rate	68%	55.3%
Female Participation Rate	20.1%	39.6%
Overall Unemployment Rate	5.79%	4.93%
Male Unemployment Rate	5.1%	5.89%
Female Unemployment Rate	8.3%	3.59%
Overall Underemployment	1.3%	2.3%
Male Underemployment	1.2%	3.4%
Female Underemployment	1.9%	0.81%

Source: Labour Force Survey, 2017-18



LIVESTOCK POPULATION

S. No.	Livestock	2006 Census	2017 Projected	2018 Projected	2019 Projected
1	Cattle	434851	600094	622898	646558
2	Buffalo	2263	2851	10265	12934
3	Goats	931821	1248640	129109	1334991
4	Sheep	506155	1012310	562339	567962
5	Horses	5097	6065	6180	6297
6	Donkey / Asses	21138	29382	30528	31719
7	Yak	16319	31006	18144	18507
8	Mule	1014	1582	1671	1765
9	Camel	-	246	186	186
	Total	1918844	2468655	25433305	2620929
10	Poultry	548743	581667	587484	593359
	Grand Total	2467587	3050322	3130789	3214288

LIVESTOCK FACILITIES

Description	Census 2006	2013	2017	2018	2019
Veterinary Hospitals	07	14	21	21	21
Dispensaries	90	167	168	168	168
Main/Mini Labs.	-	-	07	07	07
Poultry Farms public sector	03	04	04	04	04
Poultry Farms private	01	23	39	39	39
Sheep Farms	01	01	01	01	01
Dairy Farms	-	-	02	02	02
Animal Treated	126469	N/A	143497	664279	786651
Animal Vaccinated	343174	N/A	456958	269829	397676
Animal Dewormed	-	-	12958	11839	100200
Animal Slaughtered In S/H	65622	N/A	-	-	-
Animal Slaughtered in Private	26944	N/A	-	-	-

PRODUCTION, DEMAND AND SUPPLY (DAIRY & LIVESTOCK PRODUCTION)

Description	Production		Requirement		Shortage	
	Qty (MT)	PCC	Qty (MT)	PCR*	Qty (MT)	PCS
Milk	121329	81 Ltrs.	238500	159 Ltrs.	117171	78 Ltrs.
Mutton	8987	5.9 Kg	9750	6.5 Kg	763	0.6 Kg
Beef	5467	3.6 Kg	9750	6.5 Kg	4283	2.9 Kg
Chicken	1683	1.1 Kg	8550	5.7 Kg	6867	4.6 Kg
Eggs (in dozen)	2413125	19 Nos.	8625000	69 Nos.	6211975	50 Nos.

*PCC Per Capita Consumption

*PCR Per Capita Requirement

*PCS Per Capita Shortage

Source: Livestock Department GB



FISHERIES

Description	Census 2006	2013	2017	2019
Trout Hatchery	08	10	11	11
Trout Farm	02	-	02	05
Carp breeding farm	03	03	03	02
Fish Farm Private (Trout)	-	-	83	127
Trout Fish Production Private Per Annum	-	-	-	252 Tons
Revenue generation in Private Sector (Rs. 1000/kg)	-	-	-	Rs. 252
Fish Sale in Public Sector (Rs. 800/kg)	-	-	-	4.753 Tons
Revenue Generated Public Sector	-	-	-	Rs.13
Per Capita Fish Consumption Ratio in GB (June, 2019)	-	-	-	0.300 kg
Licenses issued (Game & Sports Fishery)	-	-	-	4858 Nos
Fish Seed Production	-	-	-	Rs.1.137m
Fish Seed Sale	-	-	-	Rs. 0.848m
Fish Seed Stocked in Natural Fish Resources in GB	-	-	-	Rs.0.100m
Fish Seed retained for Govt. Hatcheries	-	-	-	Rs. 0.189m

*Source: Fisheries Department GB

EDUCATION INDICATORS 2017

Description	Total	Male	Female
Literacy rate	53%	66%	41%
Teacher student ratio (Overall)	23%	20%	28%
Teacher student ratio (Primary)	29%	32%	27%
Primary Level			
Adjusted Net Enrolment Ratio	65%	69%	60%
Gross Attendance Ratio	68%	73%	63%
Primary school completion rate	77%	78%	76%
Out of school	17%	13%	22%
Secondary Level			
Adjusted Net Enrolment Ratio	52%	44%	48%
Gross Attendance ratio	55%	48%	51%
Secondary School completion rate	50%	58%	43%
Out of School Children	19%	16%	23%
Gender Parity Index (GPI)*			
Primary	0.86		
Secondary	0.79		

*Ratio of adjusted net attendance ratios of girls to boys. Source GB-MICS 2016-17 & Education Department GB



DISTRICT-WISE LITERACY RATE

District	Male	Female	Total
Hunza	80	65	71
Gilgit	78	57	67
Nagar	78	57	66
Ghizer	75	54	64
Atore	69	44	55
Skardu	67	41	54
Kharmang	67	37	49
Shiger	58	36	46
Ghanche	56	34	43
Diamer	50	11	29
Gilgit-Baltistan	66	42	53

LEVEL-WISE NUMBER OF SCHOOLS, ENROLLMENT AND TEACHERS IN ALL SECTORS

Level	Schools				Enrollment			Teachers		
	Boys	Girls	Co-Edu	Total	Boys	Girls	Total	Male	Female	Total
Primary	613	308	750	1671	59582	51608	111190	2250	2665	4915
Middle	190	113	251	554	46297	38253	84550	2321	2478	4799
High	156	97	168	421	61603	46976	108579	3329	2941	6270
Higher Secondary	26	22	65	113	27624	23072	50696	1385	1486	2871
Total	985	540	1234	2759	195106	159909	355015	9285	9570	18855

LEVEL WISE NUMBER OF SCHOOLS, ENROLMENT AND TEACHERS MANAGED BY PUBLIC SECTOR

Level	Schools				Enrollment			Teachers		
	Boys	Girls	Co-Ed	Total	Boys	Girls	Total	Male	Female	Total
Primary	548	246	0	794	33831	24910	58741	1244	784	2028
Middle	170	107	0	277	19770	21608	41378	1132	736	1868
High	150	95	0	245	33520	27848	61368	2024	1029	3053
Higher Secondary	18	16	0	34	5857	7612	13469	332	332	664
Total	985	464	0	1350	92978	81978	174956	4732	2881	7613

LEVEL WISE NUMBER OF SCHOOLS, ENROLMENT AND TEACHERS MANAGED BY OTHER PUBLIC SECTOR (SEMI GOVT. PUBLIC SCHOOLS)

Level	Schools				Enrollment			Teachers		
	Boys	Girls	Co-Ed	Total	Boys	Girls	Total	Male	Female	Total
Primary	57	57	519	633	14155	17930	32085	465	885	1350
Middle	0	0	3	03	164	238	402	05	20	25
High	0	0	0	0	0	0	0	0	0	0
Higher Secondary	1	0	5	6	7426	4559	11985	246	246	492
Total	58	57	527	642	21745	22727	44472	716	1151	1867



LEVEL-WISE NUMBER OF SCHOOLS, ENROLMENT AND TEACHERS MANAGED BY PRIVATE SECTOR

Level	Schools				Enrollment			Teachers		
	Boys	Girls	Co-Ed	Total	Boys	Girls	Total	Male	Female	Total
Primary	8	5	231	244	11596	8768	20364	541	996	1537
Middle	20	6	248	247	26363	16407	42770	1184	1722	2906
High	6	2	168	176	28083	19128	47211	1305	1912	3217
Higher Secondary	7	6	60	73	14341	10901	25242	807	908	1715
Total	41	19	707	767	80383	55204	135587	3837	5538	9375

HIGHER SECONDARY EDUCATION

Level	Schools				Enrollment			Teachers		
	Boys	Girls	Co-Ed	Total	Boys	Girls	Total	Male	Female	Total
Intermediate College	7	8	03	18	5210	4627	9837	95	31	126
Degree College	4	03	0	07	990	1479	2469	156	83	239
Teacher Training College	1	2	0	03	170	380	550	20	28	48
Universities	0	0	0	0	0	0	0	0	0	0
Cadet Colleges	12	13	03	28	6370	6486	12856	271	142	413

ENVIRONMENT

Year 2020	
Waste Generation in Gilgit-Baltistan Per Day	200 Tons
Waste Collection Per Day in Gilgit-Baltistan	170 Tons
Year 2019-20	
Waste Disposed	53000 Tons

Source: GB Waste Management Company

Temperature Variation Over The Decades	
1982-2012	0.45 °C
Precipitation Variation Over The Decades	
1982-2012	-13 mm

ENVIRONMENTAL IMPACTS OF COVID-19 LOCKDOWNS IN GILGIT-BALTISTAN PARTICULAT MATTER (PM 2.5)

Temperature Variation	
International Standard	35 µg/m ³
Before Lockdown-Dec 2019 (Avg.)	60 µg/m ³
During Lockdown-April 2020	03 µg/m ³

Source: Environmental Protection Agency (EPA) GB



HEALTH VITAL HEALTH STATISTICS

Key Indicator	Pakistan	GB
Infant Mortality (out of 1000 live births)	74	73.5
Neo-Natal Mortality (out of 1000)	55	39
Under 5 year Mortality (out of 1000)	89	92
% Delivered by skilled Staff	52	72.5
% Delivered by Medical Doctors	-	61
Fully vaccinated/immunized (12-23 months)	61	39
CPR	35%	38%
No contraceptive methods	-	62%
Antenatal Care	73%	72.5%
Neonatal Tetanus protection	64%	52%
Total fertility rate	3.8	4.6
Stunting	44%	46%
Wasting	15%	3.8%
Under weight	32%	19%

Source: GB-MICS 2016-17/NIPS-2012-13/DoHS-GB

HEALTH FACILITIES

Description	2020 (Number)
Total Number of Health Facilities in GB	557
PHQ Hospitals	01
RHQ Hospitals	03
DHQ Hospitals	03
Rural Health Centers (RHC)	03
Civil Hospitals	37
A Class Dispensaries	61
C Class Dispensaries	242
MCH centers	163
First Aid Posts (FAP)	123
BHUs	22
EPI Centers	134
Private Hospitals	06
Human Resource Developing centers	02
Midwifery Schools	02
Total Indoor Beds	1341
Population Bed Ratio	1:1043
Doctor Population Ratio	1:2898



HUMAN RESOURCE (HEALTH)

Department	Category	Sanctioned	Available
Health	Admin Cadre	42	25
	Specialist	169	76 Regular + 9 Contract=85
	GDMO	323	171 Regular +159 Contract=330
	Dental Cadre	51	37 Regular +20 Contract=57
	Paramedics	2307	2203
	General Nurse Cadre	57	32
	Supporting Staff + Clerical Staff	2958	2650
	Officer Cadre (Other)	14	09
National Program	LHWs, LHSs, Supervisor etc	1613	1588
Drug Control		36	26
Total		7570	7003

Source: Health Department GB-2020

POWER

Detail	2010	2013	2017	2019
Power Houses	93	108	128	149
Installed Capacity MW	80.120	97.439	145.934	184.55
Generating Capacity(S) MW	65.900	77.750	121.060	113.65
Generating Capacity(W) MW	44.550	58.090	88.210	86.12
Electricity supply to Pop%	90	98	99	99
Domestic Consumers	110578	141093	163271	163271
Commercial Consumers	17496	21867	29168	29168
Industrial Consumers	3794	3863	4547	4547
Agriculture Consumers	-	-	-	-
Others (Street Lights, Water Pumps etc.)	-	-	-	270
Total Consumers	132242	167262	197568	197256

ELECTRICITY DEMAND, SUPPLY AND SHORTFALL (CONSERVATIVE)

District	Existing Generation (MW)		Present Demand (MW)		Shortfall (MW)	
	Summer	Winter	Summer	Winter	Summer	Winter
Gilgit	46.00	31.60	49.89	94.51	3.89	62.91
Diamer	8.59	9.75	36.02	50.34	27.43	40.59
Skardu	19.92	16.17	50.60	94.47	30.68	78.30
Ghizer	9.51	7.37	38.88	71.34	29.37	63.97
Ghanche	8.09	5.16	25.50	48.52	17.41	43.36
Astore	4.16	3.89	14.83	24.53	10.67	20.64
Nagar	4.56	2.53	9.27	16.97	4.71	14.44
Hunza	4.71	3.58	12.83	20.61	8.12	17.03
Shigar	3.50	2.00	10.35	18.36	6.85	16.36
Kharmong	4.61	4.07	6.65	12.54	2.04	8.47
Total:-	113.65	86.12	254.82	452.19	141.17	366.07

Source: GB Power Department-2020



ROADS & BRIDGES

Mettaled Roads	1671 Km
Shingle Roads	4289 Km
Road Density	8.85 Km/100 Km ²
Road per 1000 Population	4.3 Km
Bridges	502
KKH in GB	460 Km

Source: PWD, GB-2020

VEHICLES

Regular Vehicles										
Sr. #	Type	GLT	HNZ	NGR	SKD	GZR	DMR	AST	GHE	GB
1.	Car	5503	10	05	1769	443	519	10	105	8364
2.	Jeep	6802	08	07	879	416	1070	70	197	9449
3.	Van/Hiace	1500	10	00	556	53	235	10	53	2426
4.	Mini Trucks	1816	10	11	145	24	185	09	00	2569
5.	Bus	247	00	00	81	16	00	02	06	352
6.	Trucks	5525	95	295	520	507	123	31	57	7153
7.	Tractors	919	06	00	224	165	135	10	117	1576
8.	Motorcycle	5620	73	45	1290	407	953	152	139	8679
	Total	27932	212	363	5842	2031	3220	294	674	505668

Non-Custom Paid Vehicles											
GLT	AST	DMR	GZR	SKD	GHE	KMG	SGR	HNR	HNZ	NGR	Total
11000	826	2029	2404	2231	1020	344	379	1140	2247	1020	24640

Source: Excise & Taxation Department GB-2020

POST OFFICES

Name of District	Category of Post Offices							Total
	GPO (General Post Office)	HSG SO (Higher Selection Grade Sub Office)	SO (Sub Post Office)	NPO (Night Post Office)	EDSO (Extra Departmental Sub Office)	EDBO (Extra Departmental Branch Office)	FPO (Franchised Post Office)	
Urban Post Offices	2	2	15	2	-	-	-	21
Rural Post Offices	-	-	29	-	6	124	-	159
Total	2	2	44	2	6	124	-	180

Source: Postal Department GB



TELECOMMUNICATION PHONE NETWORK

BASE TRANSCEIVER STATION (BTS) SITE	
Global System of Mobiles (GSM) BTS SITES	147
Code Division Multiple Access (CDMA) BTS SITES	29
S PHONE	
No. of Telephone Exchange	50
Installed Capacity	37476
Working Connection	15146
DSL	
No. of DSL Sites	47
DSL Total Capacity	10600
DSL Working Connection	8949

Source: SCO GB

CO-OPERATIVE SOCIETIES IN GB

Gilgit-Baltistan	Number of Societies	Membership	Share Capital (Million)	Working Capital (Million)
G. Total	107	36340	850.99	8985.096

Source: Registrar Co-Operative Societies GB.

DOMESTIC TOURIST INFLOW IN GILGIT-BALTISTAN (2007 to 2019)

Year	Jan	Feb	Mar	Apr	May	Jun	Jul	Aug	Sep	Oct	Nov	Dec	Total
2007	1133	1237	1514	2623	2995	4261	2569	2719	2369	645	397	218	22780
2008	1394	1758	1920	8506	9994	11216	5119	4881	4805	1848	1593	1006	54040
2009	1132	1260	3639	2298	2851	3837	10694	9994	8333	4283	3615	2666	54602
2010	1586	1596	2263	4366	4599	6775	7610	4847	4357	2606	2362	2333	45300
2011	986	1265	2322	7940	8817	6451	9549	10880	6793	3268	2019	9435	69725
2012	992	1133	1435	2937	3691	4995	1900	1405	1174	317	315	199	20493
2013	1273	1543	1847	4443	4970	5564	5513	6492	5788	5231	4370	4380	51414
2014	4665	5844	6588	3496	4706	5565	6637	4969	2420	1458	2887	1069	50304
2015	1967	3144	5388	7984	13146	56006	41884	36746	13729	11666	5501	3490	200651
2016	5659	7429	10275	25283	25554	70865	94059	69669	53766	32260	20554	14312	429685
2017	10289	13507	18681	45968	46461	128842	171012	126667	97754	58653	37370	26021	781225*
2018	1	-	-	-	-	-	-	-	-	-	-	-	1391628
2019	-	-	-	-	-	-	-	-	-	-	-	-	1023023

Source: Tourism Department, Government of GB

* Doesn't include those tourists whose entry couldn't be recorded officially



FOREIGN TOURIST INFLOW IN GILGIT-BALTISTAN 2007 to 2019 (Remove months)

Year	Jan	Feb	Mar	Apr	May	Jun	Jul	Aug	Sep	Oct	Nov	Dec	Total
2007	52	74	230	580	1252	2061	1491	1562	1997	773	292	174	10338
2008	48	24	279	407	693	1317	1553	1377	964	929	552	361	8504
2009	95	52	902	337	1256	1448	1039	837	760	424	203	351	7704
2010	63	54	308	204	794	729	960	815	675	405	312	260	5529
2011	81	86	325	391	663	909	726	492	608	473	293	195	5242
2012	62	99	226	165	343	714	900	475	568	422	223	124	4321
2013	64	29	366	585	395	740	614	484	546	451	201	49	4524
2014	43	09	62	495	305	600	513	343	416	492	108	56	3442
2015	51	25	286	503	375	590	469	506	531	463	256	27	4082
2016	88	55	230	319	495	684	674	632	532	622	278	164	4773
2017	50	119	281	773	523	574	948	701	772	950	389	132	6212
2018	-	-	-	-	-	-	-	-	-	-	-	-	9027
2019	-	-	-	-	-	-	-	-	-	-	-	-	10829

Source: Tourism Department, Government of GB

CONSOLIDATED DATA OF TREKKING PARTIES 2010-2019

Year	Trekking Parties	Potters		Total Members	No. of Guides
		Low	High		
2011	145	2111	0	723	145
2015	64	653	0	209	64
2019	153	2388	1	906	153

Source: Tourism Department, Government of GB

CONSOLIDATED DATA OF EXPEDITION PARTIES 2010-2019

Year	Trekking Parties	Potters		Total Members
		Low	High	
2011	18	-	-	132
2015	29	1261	26	259
2019	12	232	07	68

Source: Tourism Department, Government of GB



SECTOR WISE SUMMARY OF ANNUAL DEVELOPMENT PROGRAM ADP 2020-21 (Rs. in million)

S.No	Name of Sector	Number of Schemes	On going	New	Approved Cost	Allocation for 2020-21
1	2	3	4	5	6	7
i	Excise and Taxation & Zakat Ushur Deptt.	101	10	0	573.373	91.860
ii	Home and Police	53	38	15	3682.834	291.760
iii	Information Department	2	2	0	115.000	21.972
iv	Law Department	16	11	5	2168.131	106.794
v	S & GAD Department	5	5	0	618.849	30.102
vi	Power	104	88	16	20081.567	3567.326
vii	Agriculture, Animal Husbandry & Fisheries	62	46	16	2334.174	144.689
viii	Forestry, Wild Life & Environment	9	9	0	677.080	73.369
ix	Minerals, Mines, Industries & Commerce	16	15	1	813.264	62.528
x	Food Department	14	14	0	354.597	31.653
xi	Tourism, Sports & Culture Development	53	43	10	1832.472	110.485
xii	Social Welfare, Women Dev. Human & Child Rights and Youth Affairs Department	31	22	9	1301.003	100.212
xiii	Education	343	232	111	12626.080	1335.291
xiv	Health	158	113	45	7142.418	1205.725
xv	P & DD	15	7	8	13339.673	2161.046
xvi	Area, Rural and Urban Development	168	122	46	8932.449	1271.933
xvii	Irrigation	18	12	6	367.559	68.241
xviii	Physical Planning & Housing (PPH)	201	145	56	9872.043	563.388
xix	Transport & Communication (T & C)	434	332	102	32280.843	2205.294
	G. Total (Main ADP 2020-21)	1712	1266	446	119113.409	13443.667
	Total (Block Allocation)	432	0	0	7499.773	1560.000
	G. Total ADP 2020-21	2144	1266	446	126613.182	15003.667
	PSDP 2020-21	20	10	10	40928.046	10000.000
	T. Total (ADP + PSDP)	2164	1276	456	167541.228	25003.667

Source: Planning & Development Department, GB



EVOLUTION OF GILGIT-BALTISTAN THROUGH DECADES

Indicators		1948	1951	1961	1972	1981	1998	2008	2013	2017	2020
Human Resource		-	Census	Census	Census	Census	Census	Projected	Projected	Census	Projected
Population (Millions)		N/A	0.252	0.308	0.417	0.575	0.884	1.138	1.301	1.480	1.62
Annual Growth Rate (%)		-	-	1.98	2.64	3.8	2.56	2.56	2.56	2.56	-
Social Development											
EDUCATION											
Primary Schools	Male	85	128	199	251	304	513	534	551	567	613
	Female	-	-	01	14	39	-	235	253	357	308
	Co-Education	-	-	-	-	-	-	-	688	716	750
Middle Schools	Male	03	03	14	20	32	108	180	183	192	190
	Female	-	-	01	05	05	69	81	121	143	113
	Co-Education	-	-	-	-	-	-	-	114	213	251
High Schools	Male	-	-	02	11	28	75	114	127	140	156
	Female	-	-	-	02	04	19	-	-	70	97
	Co-Education	-	-	-	-	-	-	-	-	153	168
Higher Secondary	Male	-	-	-	-	-	-	04	02	10	26
	Female	-	-	-	-	-	01	05	07	14	22
	Co-Education	-	-	-	-	-	-	04	09	39	65
Inter Colleges	Male	-	-	-	02	01	04	-	-	12	07
	Female	-	-	-	-	-	-	-	-	2	08
	Co-Education	-	-	-	-	-	-	-	-	-	03
Degree Colleges	Male	-	-	-	-	02	02	-	-	5	04
	Female	-	-	-	-	-	-	-	-	2	03
	Co-Education	-	-	-	-	-	-	-	-	-	-
College of Education		-	-	-	-	-	01	02	02	02	-
Universities		-	-	-	-	-	-	01	01	02	02
Literacy Rate (%)		-	-	-	9.58	14.74	37.85	-	-	53%	53%
Male		-	-	-	16.24	24.24	52.62	-	-	66%	66%
Female		-	-	-	1.79	3.39	21.65	-	-	41%	41%
HEALTH											
Civil Hospitals		02	02	05	10	16	23	26	33	35	37
Rural Health Centers (RHCs)		-	-	-	-	-	-	02	02	03	03
Basic Health Units (BHUs)		-	-	-	-	-	16	18	17	23	22
MCH Centers		-	-	-	-	-	-	55	90	106	163
Dispensaries/First Aid Posts		10	12	50	86	140	215	251	261	385	426
Beds in Hospitals		49	49	90	220	547	657	882	986	1059	1341
AGRICULTURE											
Total Cultivated Area (Hectares)		-	-	-	-	43089	58154	56838	56838	56838	393878.4
Total Cropped Area (Hectares)		-	-	-	-	50193	79291	78983	78983	78985	89395



	1948	1951	1961	1972	1981	1998	2008	2013	2017	2020
ANIMAL HUSBANDRIES										
Livestock Population	-	-	0.85	1.0	1.5	1.425	1.919	1.608	2.5m	3.2m
Veterinary Hospitals	-	-	-	-	05	07	14	14	21	21
Poultry Farms	-	-	-	-	02	03	23	27	43	43
FISHERIES										
Trout Hatcheries	-	-	-	02	03	07	08	10	5	11
Trout Farms	-	-	-	-	-	01	02	05	11	05
Fish Farms Private (Trout)	-	-	-	-	-	-	-	-	83	127
FOREST										
Forest Area %	4	4	4	4	5	9	9	9	9	9
Forest Nurseries	-	-	-	-	14	14	14	14	14	14
National Parks	-	-	-	-	01	01	01	01	05	07
Games Reserves	-	-	-	-	02	05	05	05	05	05
Community Control Hunting Area	-	-	-	-	-	-	-	-	38	48
PHYSICAL INFRASTRUCTURE										
Transport & Communication										
Roads Shingle (km)	-	-	450	1600	2160	3365	2777	2997	3726	-
Roads Metal (km)	-	-	-	-	95	860	1091	1106	1394	-
COMMUNICATION										
Post Offices	12	15	21	50	75	122	176	176	180	180
Telephones	-	-	-	250	-	5800	19720	19720	13778	15146
Radio Stations	-	-	-	-	02	02	02	02	02	02
TV Rebroadcasting Stations	-	-	-	-	-	02	02	07	07	09
Airports	01	01	02	02	02	02	02	02	02	02
HYDEL POWER										
Power Houses	-	-	01	04	21	70	90	108	128	149
Generating Capacity (Summer) MW	-	-	0.2	0.65	3.08	31	65	77.75	121	113.65
Generating Capacity (Winter) MW	-	-	0.2	0.65	3.08	16	41	58.090	88	86.12
Electricity Supply to Population (%)	-	-	01	10	25	61	90	98	99	99
DRINKING WATER SUPPLY										
Water Filtration Plants	-	-	-	-	-	-	90	120	102	102
Population Served (%)	-	-	-	-	11	34	94	60	79	79

*In addition 50,000 acres of cultivable land is being added through a Rs. 12 billion mega Federal funded Project, Economic Transformation Initiative (ETI)



SUSTAINABLE DEVELOPMENT GOALS (SDGS)

<p>1 NO POVERTY</p>	<p>T1.2 Half the proportion of men, women & children of all ages living in poverty according to national definitions</p>	<p>Proportion of population multidimensionally poor: 2012-13 (MPI Report): 43.2 % 2014-15: 39.5 % (PSLM)</p>
<p>2 ZERO HUNGER</p>	<p>T2.1 End hunger & ensure access by all people, particularly poor & people in vulnerable situations, including infants, to safe, nutritious & sufficient food all year</p>	<p>Food Insecurity as per FIES scale: 24.4 % [Mild Food Insecurity: 13.2%, Moderate Food Insecurity: 7.5%, Severe Food Insecurity: 3.7%] (NNS)</p>
<p>3 GOOD HEALTH AND WELL-BEING</p>	<p>T2.2 End all forms of malnutrition, including achieving, by 2025, the internationally agreed targets on stunting & wasting in children under 5 years of age, & address the nutritional needs of adolescent girls, pregnant & lactating women & older persons</p>	<p>Stunning under 5-year children :46.2 % (Urban: 37.6, Rural: 48, Male: 47.6, Female: 44.8) (MICS)</p> <p>Prevalence of malnutrition children 5-year Overweight: 2.9 % (Urban: 3.9, Rural: 2.7, Male: 3.1, Female: 2.8) Wasting: 3.8 % (Urban: 2.1, Rural: 4.2, Male: 4.6, Female: 3) (MICS)</p> <p>Anaemia among women 15-49 : Non Preg: 23.4 Preg: 35 (NNS 2011)</p>
<p>4 QUALITY EDUCATION</p>	<p>T3.2 End preventable deaths of newborns & children under 5 years of age, reduce neonatal mortality to at least as low as 12 per 1,000 live births & under5 mortality to at least as low as 25 per 1,000 live births</p>	<p>Under-5 mortality rate: 91.8 (Urban: 47, Rural: 100.7, Male: 112.4, Female: 70.3) (MICS)</p> <p>Neonatal mortality: 47 (PDHS)</p>
<p>4 QUALITY EDUCATION</p>	<p>T4.2 By 2030, ensure that all girls & boys have access to quality early childhood development, care & preprimary education so that they are ready for primary education</p>	<p>Percentage of Children age 3-5 years who are developmentally on track: 62.5 (Literacy Numeracy: 19.5, physical: 97.5, social-emotional: 60.7, Learning: 90.5) By Gender: Male: 62.5, Female: 62.6 (MICS)</p>
<p>4 QUALITY EDUCATION</p>	<p>T4.3 Ensure equal & affordable access to quality technical, vocational & tertiary education, including university for all women & men</p>	<p>Percentage of children (36-59 months) who are attending an organized early childhood education program: 14.2 (Urban:16.4, Rural:13.8, Male:14.5, Female:14) (MICS)</p>
<p>4 QUALITY EDUCATION</p>	<p>T4.5 Eliminate gender disparities in education at all level of education & vocational training for persons with disabilities, indigenous peoples & children in vulnerable situations</p>	<p>Participation rate of youth in formal education or training last year: 56.51% Participation rate of adults in formal education or training last year: 1.57 (LFS)</p>
<p>4 QUALITY EDUCATION</p>	<p></p>	<p>Literacy (parity): 0.51 (PSLM)</p>



T5.2 Eliminate all forms of violence against all women & girls in the public & private spheres, including trafficking & sexual & other types of exploitation

Spousal Violence (Physical, sexual and emotional) by current of most recent husband: 30.6% [Emotional: 27.8, physical: 8.3, Sexual: 6.9] (PDHS)

T5.3 Eliminate all harmful practices, such as child, early & forced marriage & female genital mutilation

Women aged 15-49 year old who have been physically forced to have an unwanted sexual intercourse: 0 % [3.5% didn't respond]

T5.5 Ensure women's full & effective participation & equal opportunities for leadership at all levels of decision-making in political, economic & public life

Proxy: Women aged 15-49 who have ever been forced to perform sexual acts respondent didn't want to: 0.71% (PDHS)

Proportion of women (aged 20-24) married before
Age 15: 7%,
Age 18: 27% (MICS)

Proportion of Seats held by Women in GB Assembly: 18% (6/33)
Local governments: XX (MICS 16/17)

2017-18: Proportion Women in Managerial Positions: 2.5% [R: 0.0, U: 5] (LFS)



T6.1 Achieve universal & equitable access to safe & affordable drinking water for all

Percentage of Population using improved drinking water facility 79 % (Urban: 95.4, Rural: 75.5) (MICS)

T6.2 By 2030, achieve access to adequate & equitable sanitation & hygiene for all

Percentage of HHs with safely managed sanitation services (including a hand-washing facility with soap & water): 61.5% (PSLM)



T7.1 By 2030, ensure universal access to affordable, reliable & modern energy services

Proportion of population with electricity connection in the household: 98.9% (PSLM)

Fuel used for lightning:
Electricity: 98.14 [R: 97.77, U: 100]
Gas/Oil: 1.25 [R: 1.50, U: 0]
Wood/Candle: 0

Others: 0.62 [R: 0.74, U: 0]
Fuel used for Cooking:
Gas: 3.76 [R: 0.88, U: 18.23]
Oil: 0.08 [R: 0.10, U: 0]
Wood/sticks: 87.26 [R: 93.11, U: 45.74]
Others: 0 (PSLM 2014-15)

T7.2 Increase renewable energy in the global energy mix

Energy Mix: Wood (45%): LPG (30%): K2 Oil (6%): Hydel Power (19%) (W&P Deptt)



T8.5 Achieve full & productive employment & decent work for all women & men, including Young & disable persons

Unemployment Rate: 4.93 [M: 5.89, F: 3.59] (LFS 17/18)

T8.7 End child labour in all its forms by taking immediate & effective measures

No. of children aged 5-17 years engaged in child labour 44.9 % (Urban: 25.8, Rural: 48.8, Male: 45.6, Female: 44.3) (MICS 16/17)



T9.2 Promote sustainable industrialization &, significantly raise industry's share of employment & GDP, in line with national circumstances

Manufacturing Employment as a proportion of Total Employment: 2.69 [M: 3.77, F:1.23] (LFS 17/18)



T10.2 Empower & promote the social, economic & political inclusion of all, irrespective of age, sex, disability, race, ethnicity, origin, religion or economic or other status

Per Capita Median Income: 1667
Population living below 833 PKR per month per capita: 41% (LFS)



T11.5 By 2030, significantly reduce the number of deaths & the number of people affected & substantially decrease the direct economic losses relative to global gross domestic product caused by disasters, including water-related disasters, with a focus on protecting the poor & people in vulnerable situations

No of Deaths total GB due to disasters: 8 [Bread winner: 2, Non Bread winner: 6]
injured: 4
Houses Pakka: 5 [Fully:3, Partially: 2]
Houses Kachha: 178 [Fully:77, Partially: 101]
Cattle Shed: 108 [Fully: 79, Partially: 29]
Trees: 26385 [Fruit: 5036, Non-Fruit: 21349]
Livestock: 226 {Goat/sheep: 175, Cow/donkey: 41}
Number of Deaths and injured due to disasters per 100,000
Population:
 $(12/1492924) * 100,000 = 0.804$ (GBDMA)

Proxy: Amount Paid in Compensation due to disasters: 100,561, 000 PKR
[Compensation in Deaths: 3,400,000; Compensation for Injured: 600,000; Compensation for damaged houses: 8,200,000
Compensation for damaged Cattle Shed: 2,805,000
Compensation for damaged Trees: 82,986,000
Compensation for damaged livestock: 2,570,000 (GBDMA)



Ensure sustainable consumption and production patterns.

90% share of renewable energy in total mix. 40% energy losses (Technical & pilferage) in all sectors



13.1 Strengthen resilience & adaptive capacity to climate-related hazards & natural disasters in all countries

District Disaster Management Authorities have been established in each of the 10 districts of GB. DC is the chairman of DDMA assisted by AD. DDMA's are primarily responsible for carrying out DRR and DRm as per National Disaster Risk Management Act 2010 in their respective districts assisted by GBDMA and relevant line departments and other stakeholders. (GBDMA)



Conserve and sustainable use the oceans, seas and marine resources for sustainable development

Raw and untreated sewage flows in to the Indus river.



T15.1 Ensure the conservation, restoration & sustainable use of terrestrial & inland freshwater ecosystems and their services, in particular forests, wetlands, mountains & drylands, in line with obligations under international agreements

Forest areas as a percentage of land area: 3.58 % [Diaper: 5.45, Astore, 0.431, Gilgit: 0.364, Ghizer: 0.091, Nager: 0.067, Skardu, 0.04, Shiger: 0.019, Kharmang: 0.008, Ghanche: 0.006, Hunza: 0.005] (Forest Department)

Proxy: Proportion of Protected Area: 56% [41052.2 out of 72971 Sq Km]
National Parks (07): 17153.4 Sq Km
Wildlife Sanctuaries (02): 583 Sq Km
Game Reserves (04): 909.5 Sq Km
CMA's/CCHA's: 22406.7 (Wildlife Dept)

T15.4 By 2030, ensure the conservation of mountain ecosystems, biodiversity, enhance their capacity that are essential for sustainable development

Total Protected Area: 41052.6 Sq Km
Total Area of GB: 72971 Sq Km
Proportion of Protected Area: 56% (Wildlife Department)



T16.1 Significantly reduce all forms of violence & related death rates everywhere

Proxy: Murder Cases: 2014: 75, 2015: 57, 2016: 67, 2017: 62, 2018: 74

Number of murder cases per 100,000 Population:
 $((74/1492924) * 100,000) = 4.96$
(Police Department)

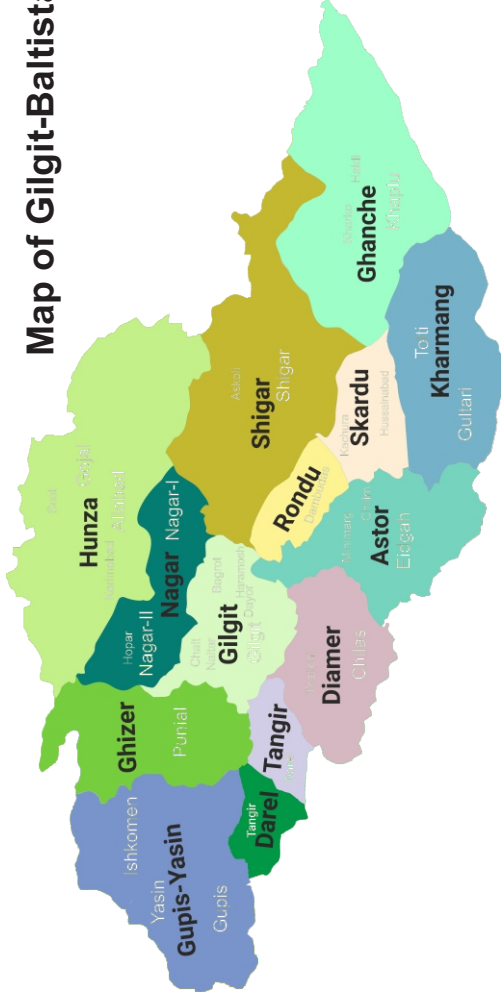
Percentage of ever married women (15-49) who have experienced Violence during the last 12 months:

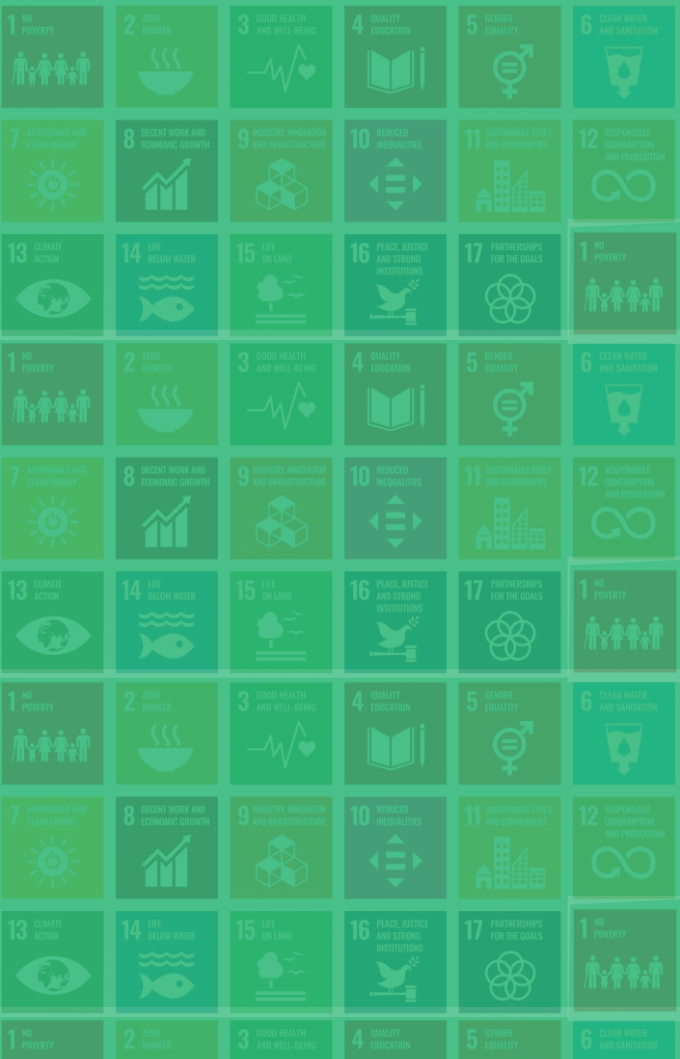
Physical: 5.8 %

Sexual: 6.1 %

Psychological (recent/current or former husband) : 27.8% (PDHS)

Map of Gilgit-Baltistan





Government of Gilgit-Baltistan
Planning & Development Department

web: www.pnd.gog.pk Email: info@pnd.gog.pk

Tel: 05811-920214 Fax: 05811-920215

