

## WARSASH MARITIME ACADEMY CADET TRAINING RELOCATION PROJECT – UPDATE 10 MAY 2017

Welcome to our first newsletter setting out the progress we are making in preparation for the relocation of the Warsash Maritime Academy Cadet Training Provision from this coming September.

We will be issuing progress updates via this newsletter format every two weeks over the summer, to keep you up to speed with the works and preparations.

We welcome any feedback from you on the content of the newsletter and would be delighted to answer any questions you may have as we complete these exciting works in the weeks ahead.

Southampton Solent University (SSU) have signed a ten year lease on a building located on the southern part of the City College Campus. This building is currently known as the Austen building and was constructed in 1996 by Hampshire County Council. It is a three storey steel framed building with glass and brick facades that was originally designed as a workshop and teaching facility.

This summer SSU are carrying out works to completely remodel the ground floor to provide modern, light and well ventilated engineering and specialist maritime engineering workshop suites and a new reception and administrative hub for the centre. On the upper floors, brand new state of the art audio visual equipment will be installed in every teaching room together with new classroom furniture. These teaching spaces will include a new ECDIS suite, chartrooms, IT suites and a large self directed study space which will also be the home to student support services. Staff will be based on the second floor where a further suite of teaching and tutorial spaces will be located. Please send any comments, questions and feedback to: John Bazley [john.bazley@solent.ac.uk](mailto:john.bazley@solent.ac.uk)

### Key Facts

- Distance from East Park Terrace:  
*10 minute walk*
- Distance from Cadet Halls of Residence:  
*2 minute walk*
- Project Budget:  
*£6m*
- Area of Works:  
*4,000m<sup>2</sup>*
- Contract Works Period:  
*April to September*
- Main Contractor:  
*MIDAS*
- Procurement Route:  
*Southern Construction Framework*

## PROJECT PROGRESS UPDATE



### Progress Update

In recent weeks, the following key activities have been completed:

- The project team completed the Gateway 3 review to confirm that the contract for works was on time, on budget and within scope. This was signed off before Easter.
- City College completed works to decant their library and photography studios elsewhere on the campus and have cleared all their equipment and furniture from the Ground Floor of the current Austen Building.
- The lease with City College was signed on the 3<sup>rd</sup> May, which means that the University now has a lease over the building for the next 10 years.

- MIDAS have mobilised on site and works commenced on the 8<sup>th</sup> May to create the new Cadet training facilities

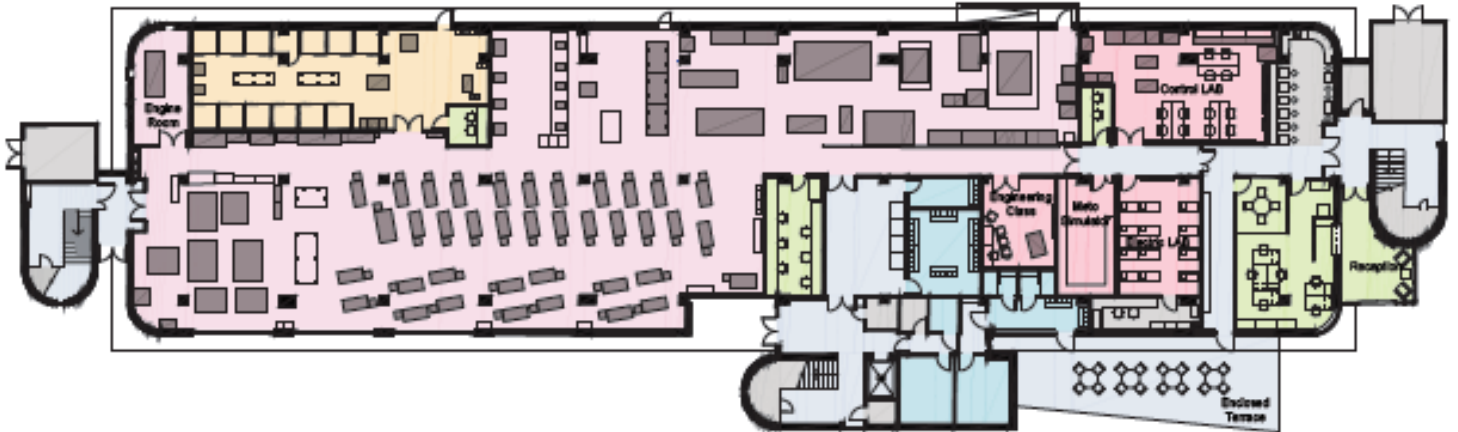
### Next Steps

Works on the Ground Floor will include a full strip out, installation of new mechanical and electrical ventilation, creation of the welding workshop areas, building new changing rooms as well as a new METO suite and general office.

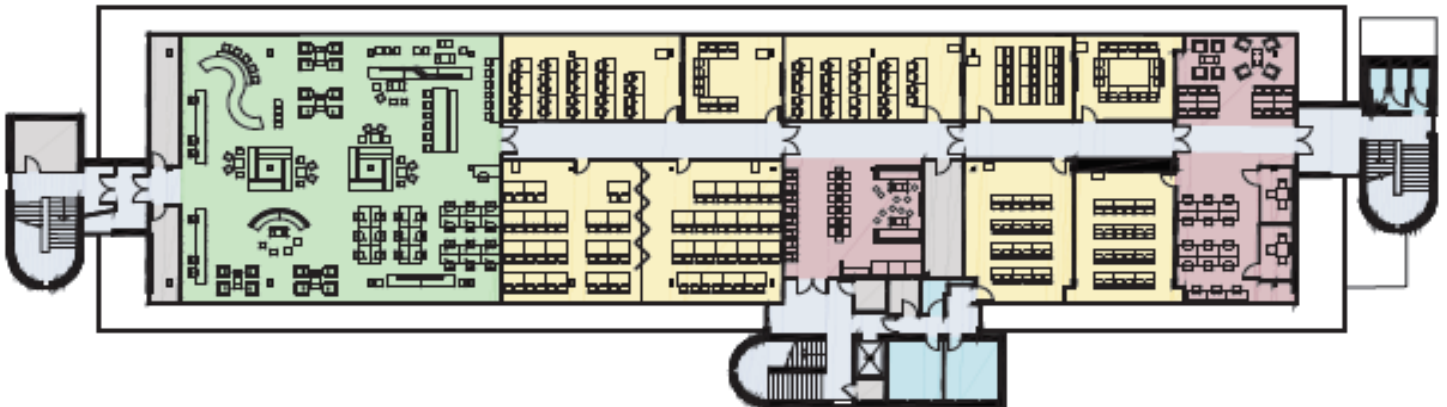
Later in June, MIDAS will be given access to the first and second floors where more limited strip out will take place prior to the installation of new ceilings, lighting, new data and adaptations to rooms to meet the needs of the Warsash Maritime Academy.

## PROPOSED FLOOR PLANS FOR WMA

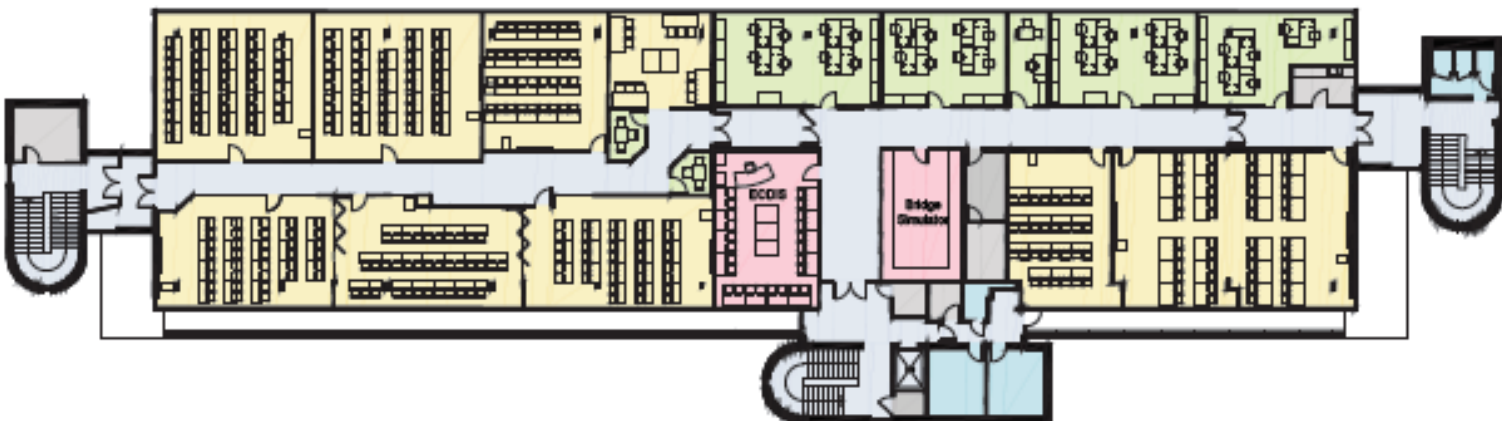
Ground Floor



First Floor



Second Floor





**Ground Floor of the new WMA home cleared by City College to prepare WMA works to commence**



**Works completed by City College to prepare for their decant from Austen Building**



First Floor of Watts open plan space before works

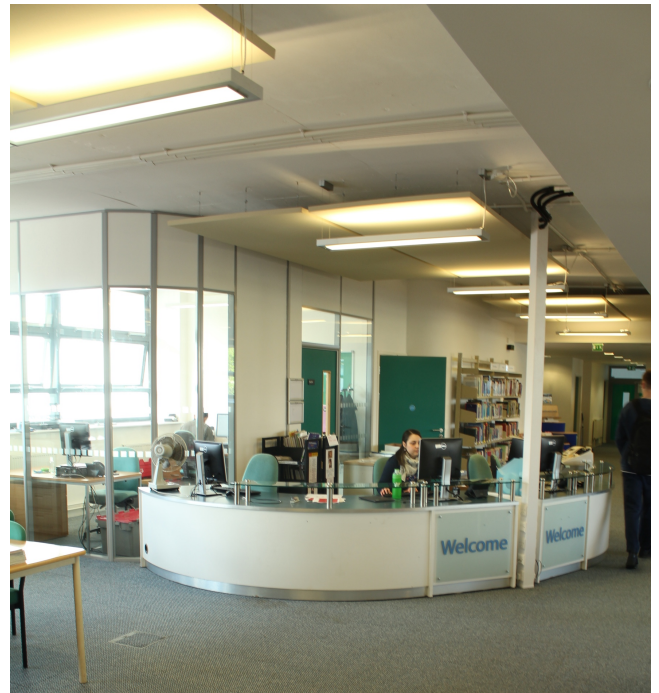


First Floor of Watts IT teaching rooms after works





Second Floor of Watts open plan space before works



Second Floor of Watts new Learning Resource Centre

The spaces above have been created by City College to allow them to decant the ground floor of Austen in time for Midas to start work on 8<sup>th</sup> May.



**NEW LEARNING SPACES PROPOSED FOR WMA COMING SOON!**

This project is being delivered by the following:



WARSASH  
MARITIME  
ACADEMY

Warsash Maritime Academy  
Client



MIDAS,  
Main Contractor

**AECOM**

AECOM,  
Project Managers and Cost Consultants



Southampton Solent University,  
Estates and IT Project Management

**PMC**

Peter Marsh Consulting Ltd.

Peter Marsh Consulting,  
Client Advisors

## Frequently Asked Questions (FAQs):

In this section, we will capture frequently asked questions and provide responses to you throughout the duration of the works.

- 1) When are the works due to complete?  
*Most of the building works will be complete by the first week of August to allow for the installation of brand new Audio Visual screens and installation of new furniture throughout. All works – including IT and furniture installation – are due to complete by the end of August to allow for staff familiarisation before teaching commences.*
- 2) What will happen if the works are late?  
*The contractor and project team are confident that works will be completed on time. The contractor's programme does not rely on working in the evening and weekend and this remains an option which will be utilised if at any time the works look as though they may slip.*
- 3) Will Warsash Maritime Academy learners be able to use the other facilities of the University nearby?  
*Yes – Warsash Maritime Academy learners will have access to the full range of student services within the East Park Terrace Campus.*