



**WINTER  
CATALOG  
2023 – 2024**





# SUREWERX TRACTION

THE #1 SUPPLIER OF  
PROFESSIONAL TRACTION  
AID SOLUTIONS  
IN NORTH AMERICA

SureWerx offers the industry-leading  
K1 Series® and Due North® brands.

No matter the application, work  
environment, or type of footwear worn,  
we have the solution that will help reduce  
slips and falls in the workplace.

**Check out the  
Traction Resource Center  
[www.icecleats.surewerx.com](http://www.icecleats.surewerx.com)**





# OUR TRACTION OFFERING

## K1 SERIES® MID-SOLE

STYLE	PRODUCT NAME	STRAP COLOR	ITEM NUMBER
Original Mid-Sole	Slim Profile	Hi-Viz	V9770650-O/S
Original Mid-Sole	Slim Profile	Black	V9770870-O/S
Original Mid-Sole	Low Profile	Hi-Viz	V9770250-O/S
Original Mid-Sole	Low Profile	Black	V9770570-O/S
Original Mid-Sole	Original Profile	Hi-Viz	V9770150-O/S
Original Mid-Sole	Original Profile	Black	V9770470-O/S
Original Mid-Sole	High Profile	Hi-Viz	V9770350-O/S
Original Mid-Sole	High Profile	Black	V9770770-O/S
Intrinsic Mid-Sole	Intrinsic Low Profile	Hi-Viz	V8770260-O/S
Intrinsic Mid-Sole	Intrinsic Original Profile	Hi-Viz	V8770160-O/S
Intrinsic Mid-Sole	Intrinsic High Profile	Hi-Viz	V8770360-O/S
Accessory Mid-Sole	Spacer Original / High Profile	N/A	V7770170-O/S
Accessory Mid-Sole	Spacer Original Low Profile	N/A	V7770270-O/S

## HEEL COVERAGE

BRAND	STYLE	PRODUCT NAME	SIZE	ITEM NUMBER
K1 Series	Heel	Original Heelstop	Medium	V6770170-M
K1 Series	Heel	Original Heelstop	Large	V6770170-L
K1 Series	Heel	Original Heelstop	X-Large	V6770170-XL
K1 Series	Heel	Original Heelstop	2XL	V6770170-2XL
K1 Series	Heel	Intrinsic Heelstop	Medium	V5770170-M
K1 Series	Heel	Intrinsic Heelstop	Large	V5770170-L
K1 Series	Heel	Intrinsic Heelstop	X-Large	V5770170-XL
K1 Series	Heel	Intrinsic Heelstop	2XL	V5770170-2XL
K1 Series	Accessory Heelstop	Extension Strap	S/L	V4770170-S/L
K1 Series	Accessory Heelstop	Extension Strap	XL	V4770170-XL
Due North	Heel	Heel Traction Aid	OSFM	V3550470-O/S

## DUE NORTH® FULL FOOT

PRODUCT NAME	SIZE	ITEM NUMBER
GripPro Spikeless	S/M	V3553570-S/M
GripPro Spikeless	L/XL	V3553570-L/XL
GripPro Spikeless	2XL	V3553570-2XL
All Purpose	Small	V3550270-S
All Purpose	Medium	V3550270-M
All Purpose	Large	V3550270-L
All Purpose	X-Large	V3550270-XL
All Purpose Industrial	Small	V3550370-S
All Purpose Industrial	Medium	V3550370-M
All Purpose Industrial	Large	V3550370-L
All Purpose Industrial	X-Large	V3550370-XL
All Purpose Industrial	2XL	V3550370-2XL
Heavy Duty	Small	V3550570-S
Heavy Duty	Medium	V3550570-M
Heavy Duty	Large	V3550570-L
Heavy Duty	X-Large	V3550570-XL
Light Industrial	S/M	V3550170-S/M
Light Industrial	L/XL	V3550170-L/XL
Everyday G3	S/M	V3551270-S/M
Everyday G3	L/XL	V3551270-L/XL

## TRANSITIONAL

From outdoors to surfaces where spikes aren't needed

### K1 SERIES® MID-SOLES

Also available with Black Strap



### DUE NORTH® FULL FOOT



GripPro™ Spikeless

— INTRINSIC OPTION FOR HAZARDOUS ENVIRONMENTS —

## SPIKED FULL-FOOT COVERAGE

Comfortable for those working long hours outdoors

### DUE NORTH® FULL FOOT



Light Industrial

All Purpose

All Purpose Industrial

Heavy Duty

Light-Duty Use



Heavy-Duty Use

## HEEL COVERAGE

Great for drivers and those operating machinery

### K1 SERIES® HEELSTOPS



Intrinsic option available for hazardous environments

### DUE NORTH® HEEL TRACTION AID



# K1 SERIES® MID-SOLE TRACTION AIDS

## SHARED FEATURES:

- Superior grip with ice-penetrating tungsten carbide spikes
- Easily transition from surfaces, driving pedals or ladders by rotating the ice cleats to the top of the boot
- Packaging is color-coded with peg holes for on-site vending machines, distribution, and easy storage
- Intrinsic option available for hazardous environments (for low, original, and high profile)



## OUR PROFILES:

### SLIM

Our thinnest mid-sole yet and the only mid-sole solution for flat-soled footwear



### LOW PROFILE

Shorter studs and a narrower rubber platform



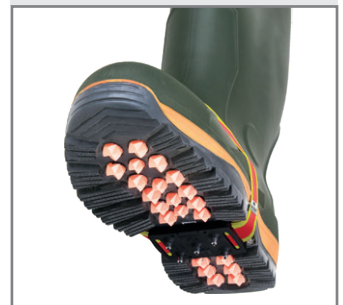
### ORIGINAL PROFILE

Designed for traditional, defined-heel work boots



### HIGH PROFILE

Extra-long studs



**SLIM:**

- Easily switch between tungsten carbide studs and slip-resistant indoor traction pad
- Slip-resistant indoor traction
- Total Height: 9 mm



Strap Type	Prod. No.
Hi Vis	V9770650
Black	V9770870

**LOW PROFILE:**

- Ideal for a hiker-style or tactical boot
- Spike Height: 3 mm
- Total Height: 11 mm



Strap Type	Prod. No.
Hi Vis	V9770250
Black	V9770570
Intrinsic	V8770260

**ORIGINAL PROFILE:**

- Best Seller
- Designed for traditional, defined-heel work boots
- Spike Height: 7 mm
- Total Height: 15 mm



Strap Type	Prod. No.
Hi Vis	V9770150
Black	V9770470
Intrinsic	V8770160

**HIGH PROFILE:**

- Designed for boots with extra deep treads such as a linesman's boot
- Spike Height: 10 mm
- Total Height: 18 mm



Strap Type	Prod. No.
Hi Vis	V9770350
Black	V9770770
Intrinsic	V8770360

**SPACER ACCESSORY:**

Use when additional depth is needed to ensure the studs meet the ground



Profile Model	Prod. No.
Original or High Profile	V7770170
Low Profile	V7770270



# K1 SERIES® INTRINSIC

## THE ONLY CERTIFIED INTRINSIC ICE CLEAT BRAND IN NORTH AMERICA

### MORE THAN NON-SPARKING – INTRINSICALLY SAFE

#### Intrinsically Safe Mid-Soles

- Prevents static-electricity buildup
- Has non-sparking, long-lasting spikes



	K1 SERIES®	BRASS	COPPER
Non-Sparking Cleats	X	X	X
Anti-Static Strap & Buckle	X		
ESD Rubber Body	X		
Long Lasting	X		
Grounds Wearer	X		

COMBUSTIBLE MATERIAL	EUROPE	USA (NEC)
Gas or Vapour	Zone 0 Zone 1 Zone 2	Class I, Div 1
Dust	Zone 20 Zone 21 Zone 22	Class II, Div 1
Fibres	Same as Dust	Class III, Div 1

**A much more complex design and construction than simply “non-sparking”**

Profile Model	Prod. No.
Original Profile	V8770160-O/S
High Profile	V8770360-O/S
Low Profile	V8770260-O/S

#### TESTED TO STANDARDS:

- IEC 61340-5-1:2016
- ESD S9.1 and ESD S97.1
- EN ISO 80079-36:2016

*Must be worn with CD or ESD footwear*

**FOR A FREE SAMPLE  
VISIT TRACTION RESOURCE CENTER:**

[icecleats.surewerx.com](http://icecleats.surewerx.com)



# DUE NORTH® SPIKED FULL-FOOT TRACTION AIDS

## SHARED FEATURES:

- Superior grip with ice-penetrating tungsten carbide spikes
- All-day comfort that fits most footwear
- Durable and flexible natural rubber is easy to put on and maintains elasticity in subzero temperatures
- Packaging is clearly labeled and has peg holes for on-site vending machines, distribution, and easy storage



## ALL PURPOSE:

- Ergonomic design for those working in winter conditions
- 6 tungsten carbide Ice Diamond™ spikes per foot

**Prod. No.**

V3550270-S

V3550270-M

V3550270-L

V3550270-XL



## ALL PURPOSE INDUSTRIAL:

- Designed for industrial work in harsh outdoor environments
- Thick rubber design and built-in retention strap fits a wider variety of industrial footwear
- 8 tungsten carbide Ice Diamond™ spikes per foot

**Prod. No.**

V3550370-S

V3550370-M

V3550370-L

V3550370-XL

V3550370-2XL



### HEAVY DUTY:

- Designed for the harshest outdoor work environments and extreme winter conditions
- Thick rubber and deep tread design for maximum grip in harsh terrain
- 14 molded-in tungsten carbide spikes per foot

**Prod. No.**

V3550570-S

V3550570-M

V3550570-L

V3550570-XL



### LIGHT INDUSTRIAL:

- Minimal design for work environments where occasional traction is needed
- 6 tungsten carbide Ice Diamond™ spikes per foot

**Prod. No.**

V3550170-S/M

V3550170-L/XL



### EVERYDAY G3:

- Easy to use design for walking, running, or light-duty work in winter conditions
- 6 tungsten carbide Ice Diamond™ spikes per foot

**Prod. No.**

V3551270-S/M

V3551270-L/XL





# GRIPPRO™ SPIKELESS INDUSTRIAL TRACTION AIDS



**PLATINUM  
AWARD  
WINNER**

**Help protect workers from slips and falls on  
snow and ice with more traction than the  
industry-standard rubber-soled shoes**



**PROTECTIVE  
APPAREL  
AWARD  
WINNER**

Flexible for snug fit, with retention strap

Innovative tread design displaces excess water

Easy on/off pull tab



22 spikeless chevrons increase grip without damaging floors

Durable natural rubber maintains elasticity up to -65°F

## DESIGNED FOR:

- Convenience and versatility
- Traction on surfaces sensitive to spike damage
- Frequent transitions from:
  - Outdoor to indoor
  - Operating vehicles with foot pedals
  - Slippery indoor surfaces



# GripPro™ Spikeless Industrial Traction Aids

## PROSPECTIVE INDUSTRIES



- Aviation
- Telecommunications
- Water systems and wastewater treatment
- Flat commercial roofing
- Cold storage warehousing and logistics
- Refrigeration



REQUEST SAMPLES TO TEST OUT FOR YOUR WORK ENVIRONMENT



Successful case studies have shown improved traction on dry, uneven surfaces and other indoor surfaces where debris is present

- Paper and Packaging Manufacturing
- Industry-Leading Airline Company
- Busing Companies

Size	Prod. No.
Small/Medium	V3553570-S/M
Large/X-Large	V3553570-L/XL
2X-Large	V3553570-2XL

*\*Spiked traction continues to provide the best grip for outdoor use.  
Not intended for smooth, indoor surfaces with oil, soap or grease.*



# HEELSTOP TRACTION AIDS

Both K1 Series® Heelstops and Due North® Heel Traction Aids are a great solution for drivers or those who prefer heel coverage

## K1 SERIES® HEELSTOP

- Designed for harsh outdoor work environments
- Durable rubber and 5 tungsten carbide spikes per foot
- Adjustable Velcro strap for customizable fit
- Intrinsic option available for hazardous environments

**Strap Extenders available:** V4770170-S/L, V4770170-XL

**Prod. No.**

V6770170-M

V6770170-L

V6770170-XL

V6770170-2XL

**INTRINSIC:**

**Prod. No.**

V5770170-M

V5770170-L

V5770170-XL

V5770170-2XL

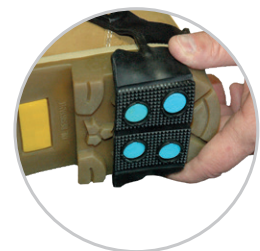
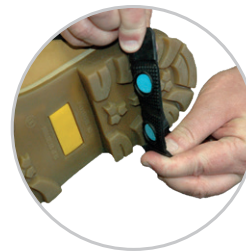


## DUE NORTH® HEEL TRACTION AID

- Designed for work environments where occasional traction is needed
- 4 tungsten carbide Ice Diamond™ spikes per foot
- Adjustable rubber strap for secure fit

**Prod. No.**

V3550470-O/S



# SLIPS AND FALLS

## THE #1 CAUSE OF WORKER'S COMPENSATION CLAIMS

**#1**  
CAUSE OF WORKER'S  
COMPENSATION CLAIMS

**20.8%**  
OF EMERGENCY VISITS

**31**  
DAYS OF WORK LOST

### THE CLEAR FACTS

More than 20,460 reported ice, sleet, and snow-related worker injuries in 2017 making up the majority of claims.  
— *U.S. Bureau of Labor Statistics*

20.8% of emergency department visits and hospitalizations in the U.S. are due to slips and falls.  
— *EHS Today, "The High Cost of Slips, Trips and Falls"*

25% of slips and falls result in more than 31 days away from work.  
— *National Floor Safety Institute*

# SLIP-ON TRACTION AIDS

## THE FASTEST GROWING CATEGORY IN SAFETY

### GROWING INDUSTRY

As more EHS professionals become aware of the available solutions, we are seeing more companies implement ice cleat policy. Companies are mandating ice cleats for all employees, including ones that don't necessarily work outside (i.e. office employees in the parking lot).

### THE NUMBERS ADD UP

Average cost of an ice-related slip and fall worker's compensation claim is \$48,000 US, according to the Maine Department of Labor. At \$30 US a pair, a company can outfit 1,600 employees with a pair of ice cleats and save money if one accident is prevented.



## WHAT OUR CUSTOMERS ARE SAYING

“Yes, we require either ice cleats or approved shoes for ice wear.  
**We declare ‘Cleat Day’ on certain winter days, usually when there is fresh snow or accumulation is not cleared from most walkways.**

Cleats, like all PPE, are the last line of defence.”

– *Safety Professional,*  
*SHELL CATALYSTS & TECHNOLOGIES*

**“When the ground temperature is less than 0 degrees C or 32 degrees F, security will activate the ice cleat sign on the safety bulletin board.** If the temperature is increasing, security will check the ground temperature at pre-determined locations. If the ground temperatures in all locations are greater than 0 degrees Celsius, the ice cleat sign will be deactivated.”

– *Safety Professional,*  
*HUSKY ENERGY*

**“Anyone that enters the site must wear ice cleats.**  
 Employees contractors, deliveries, security, **everyone.**”

– *Safety Professional,*  
*WESTLAKE CHEMICAL*

“Ice cleats are required for anyone walking outside when conditions warrant their use – **from the parking lot to the lunch trailers included**”

– *Safety Professional,*  
*ALUMASAFWAY*

# WHAT WE OFFER

## RESOURCES:

- Traction Specialists
- Sample Program
- Pilot Program
- Traction Policy Program
- Traction Resource Center  
[www.icecleats.surewerx.com](http://www.icecleats.surewerx.com)

## SAMPLE PROGRAM:

- The sample program will allow users to test out the traction aid options and provide feedback

## TRACTION PILOT PROGRAM:

Once the proper traction device has been tested by an end-user:

- SureWerx will send additional samples for review
- The Safety Director or employees can test the product in their environment
- After the initial test is conducted, the Pilot Program will begin
- Quantities of samples sent will be based on size of opportunity

## TRACTION POLICY PROGRAM:

- The Traction Specialist will work with a Safety professional at an end-user to develop a traction policy, complementary to the Safety policy
- Traction Specialists are capable of:
  - Pointing out key hazards for slips from surface
  - Recommending the correct product for the application
  - Demonstrating usage of the product
  - Give insight and feedback to Traction Policies and Procedures





OUR TRUSTED FAMILY OF TOOL, EQUIPMENT & SAFETY BRANDS

**JACKSON**<sup>®</sup>

*sellstrom*<sup>®</sup>



**OBERON**<sup>™</sup>



**K1**<sup>®</sup>  
S E R I E S



**MEGA**<sup>™</sup>  
COMFORT



**USA HEAD OFFICE**

SureWerx USA Inc.  
325 Corporate Drive  
Elgin, IL  
USA 60123  
800.323.7402  
[surewerx.com/usa](http://surewerx.com/usa)