

SPECIFICATIONS:

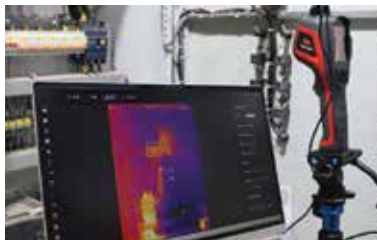
- Pixel Resolution: 256 x 192
- Accuracy: $\pm 2^{\circ}\text{C}$ ($\pm 3.6^{\circ}\text{F}$) or $\pm 2\%$
- Temperature Range: -20°C to 550°C (-4°F to 1022°F)
- Operation Range: -10°C to 50°C (14°F to 122°F)
- Storage Range: -20°C to 60°C (-4°F to 140°F)
- Pixel Pitch: 12 μm
- FOV: $56^{\circ} \times 42^{\circ}$
- IFOV: 3.8 mrad
- Focal Length: 3.2mm
- Focus: Fixed
- Measurement Distance: setting dependent
- Thermal Sensitivity (NETD): $< (50 \text{ mK})$
 0.05°C at 30°C (86°F)
- Frame Rate: 20 Hz
- Humidity: 10% to 95% non-condensing
- Pixel Operability: $> 99\%$
- Drop Rating: 2 m (6.56')
- Dimensions (without lens):
237mm L x 75mm W x 92mm D ($\pm 0.5\text{mm}$)
(9.33" L x 2.95" W x 3.62" D (± 0.02 "))
- Power: 5 V DC 2 A
- Battery: Li-ion, built-in
- Operation Time: 11 hours
- Charging Time: 4 hours
- Power Management: adjustable (automatic shut-down, 5 minutes, 10 minutes, 20 minutes)
- Weight (without lens): 520g (1.15 lbs)
- Interface: USB Type-C, MicroSD
- Image Format: JPG
- Image Polarity: white hot, black hot, iron, lava, rainbow, high-contrast rainbow, black red
- Image Modes: IR, fusion (ICI Dual Vision), visible picture-in-picture
- Memory: MicroSD card (up to 64 GB)
- Screen: 2.8" color LCD, 240 x 320
- Emissivity Correction: 0.01 to 1.0
- Measurement Units: $^{\circ}\text{C}$, $^{\circ}\text{F}$, $^{\circ}\text{K}$
- IP Rating: IP54
- Light: LED
- Automatic alarm
- Internal non-uniformity correction (NUC)
- 1/4"-20 tripod support

OPTIONS / ACCESSORIES:

- USB Cable
- 16 GB Micro-SD card

APPLICATIONS:

- Electrical poles & electrical inspections
- Process control
- Plant/General maintenance
- Industrial vision systems
- Transportation/Automotive
- HVAC/AC
- Home/building Inspections



T-CAM 300 P-SERIES ONE TOOL TO MEET ALL NEEDS!

- Handheld thermal camera provides high quality 256 x 192 thermal images in rich details at short and medium distances to meet professional work requirements easily.
- Provides a wide temperature range measuring from -20°C to 550°C (-4°F to 1022°F) and an accuracy of $\pm 2^{\circ}\text{C}$ ($\pm 3.6^{\circ}\text{F}$) or $\pm 2\%$.
- 11 hours of battery life ensures the T-Cam 300 meets time requirements of inspections.
- Increased battery life through power management settings to shutdown the device when not in use.
- Take advantage of ICI Dual Vision to overlay visible and thermal images with color palettes to enhance viewing.

A&M ITEM #5524931

\$495⁰⁰

List Price \$1,095.00

FREE 

SHIPPING
IN CONTINENTAL US ONLY

COMPARES TO


E6XT

Valid thru 12/31/24 or while supplies last. Specifications and pricing are subject to change without notice. Not responsible for typographical errors. Offer cannot be combined with any other discount offers. Free ground shipping in continental US only. Please see our website for a full listing of our Terms & Conditions.

SHOP.AM-IND.COM | WWW.AM-IND.COM

Headquarters & NJ Sales Office
Rahway, NJ
800.864.2660

New England Regional Office
West Lebanon, NH
800.225.6711

Northern NJ Regional Office
Fair Lawn, NJ
800.622.1363

CT Regional Office
Middletown, CT
800.771.1233

PA Regional Office
Stroudsburg, PA
855.207.0400

A&M
INDUSTRIAL
PRODUCTS | SERVICES | SOLUTIONS