

Catalogue
of all

Specimens of Natural History

collected by Mr Blandowski's Party during an

Expedition to the Lower Murray in

1859

Monthly Lists.

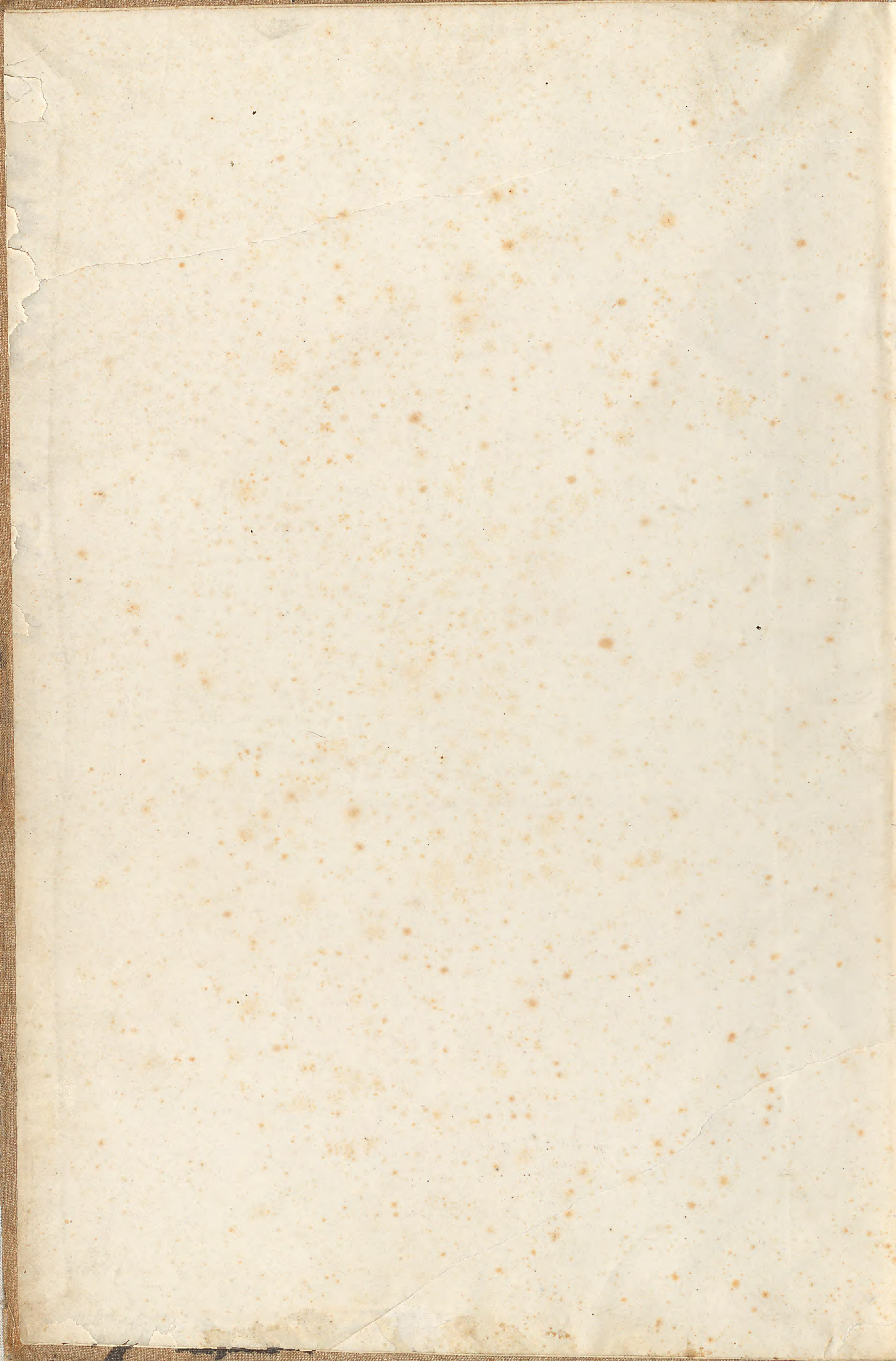
(Forwarded to the Government.)

Constitution

1856 to Dec^r 1857

Wide

McKerrow



Monthly Lists.

(Forwarded to the Government.)

Recapitulation

of collected Specimens from Dec^r 1856 to Dec^r 1857

No. of Lists.	Running Number from to	Collected during the month of	Where collected.	Vide Page
I.	No. 1 to 200	collected on	the road to Gunbower	1 - 19
II.	201 " 400	December 56.	neighbourhood of Gunbower	21 - 40
III.	401 500	January 57		
IV.	501 531	February	do do	51 - 53
VI.	532 663			
VII.	664 754	March	between Kew's Swamps, the Murrumbidgee and the Darling	67 - 93
VIII.	755 1000	April		
IX.	1001 1200	May	Mandellimin' 10 miles south from the junction of the Darling and Murray Rivers, on the Victorian Side of the Murray.	93 - 117
X.	1201 1600	June		
XI.	1601 1815	July		
XIV.	1816 1930	August		
XV.	1931 2100	September		
XVI.	2101 2400	October		
XX.	2401 3000	November		295 - 359.
Preserved in Spirits.				
V.	1 26	February	near Gunbower	361 - 363.
VII.	27 64	May	at Mandellimin.	363 - 367.
XIII.	65 82	July		
XVII.	83 262	August		
XVIII.	263 278	September		
XIX.	279 389	October		

General Lists.

The collected specimens, as per table above, are classified, viz:

No. of General List	Description	Number collected	Total
I.	Stones, Fossils & Sundry Specim ^s	358	
II.	Insects	4202	
III.	Shells	8484	
IV.	fishes	247	
V.	frogs	199	
VI.	Snakes	68	
VII.	Lizards	535	
VIII.	Turtles	64	
IX.	Birds	2335	
X.	Quadrupeds	742	
		17434	

Melbourne 15th January 1858

William Blandrew Esq.

CATALOGUE OF THE MUSEUM OF

Museum Number.	Name of Specimen.	Description of the Specimen.	Number of Specimens.
1	<i>Pezomachus lobata</i> Husk Duck	<u>List No 1 from all States Summer 11th 1857</u> a very large male specimen	1.
2	White Spoonbill	long billed male Bird	1.
3	White Spoonbill	do do do	1
4	White Spoonbill	Short bill new	1
5	White Spoonbill	do do female	1
6	White Spoonbill	do do f ?	1
7	White bellied Cormorant	m.	1
8	Pell Bird	No distinction between the sexes	1
9	do do	" "	1
10	do do	" "	1
11	do do	" "	1
12	do do	" "	1
13	do do	" "	1
14	do do	" "	1
15	do do	" "	1
16	do do	" "	1
17	do do	" "	1
18	do do	" "	1
19	do do	" "	1
20	Pied Robin	Young Bird	1

NATURAL HISTORY OF VICTORIA.

Locality whence obtained.

Donor's Name.

Remarks.

New Swamp near St Hope

2 greenish egg in a large nest in mangal islands in the Swamp. obtained in January 5th 1857.

do

do

do

do

do

do

Jacksons Creek

Exchanged; see out book, p. 21.

do

do

do

do

do

do

do

do

do

do

do

CATALOGUE OF THE MUSEUM OF

Museum Number.	Name of Specimen.	Description of the Specimen.	Number of Specimens.
21	76. Spotted Pardalote	No distinction in sexes	1.
22	do do	do	1
23	16 Pied Robin	male Bird	1
24	349? Tree Creeper	Brown?	1
25	74. Wood Swallow	White Rump no dist in sexes	1.
26	68. do do	Common	1.
27	477 Dotted	Brown Shouldered.	1.
28	68. Wood Swallow	Young Bird	1.
29	64. Azure Kingfisher	No distinction in M or F.	1.
30	64 do do	do do	1.
31	309. Friar Bird		1.
32	60 Sacred Halcyon	Young Bird	1.
33	226. Australian Pipit		1.
34	397. Parrakeet	Red rumped F.	1.
35	do	do M.	1.
36	do	do F.	1.
37	398. Grass Parrakeet	Green Banded	1.
38	311. Friar Bird	Yellow throated	1.
39	do	do	1.
40	321. Blue faced Entomyza	M.	1.

NATURAL HISTORY OF VICTORIA.

Locality whence obtained.

Donor's Name.

Remarks.

in the neighbourhood of
Gardiner's Station at the
Goulbourn Creek

Goulbourn Creek

Swamp near the
Goulbourn

Goulbourn Creek

Goulbourn Creek

This little bird is very
plentiful all along the banks
of the Murray

The White-necked Wood Swallow
is mostly found in the neighbour-
hood of Creeks and lagoons.

also the Common Wood
Swallow which prefers dark
shady thickets and does not
fly so long out the way

there is hardly a creek or a
lagoon in the neighbour-
hood of the Murray where
this pretty little bird is not
seen, rushing swiftly along
the sandy edges in search of
food

Not a very common bird.
which keeps always close
to the water perching on
low dry branches and
watching the insects?
as well as it chiefly feeds

This bird is often met
with on the river banks.
its voice is very monotonous

one of the most common
birds on the banks of the
Murray, the flight of it is
very quick

CATALOGUE OF THE MUSEUM OF

Museum Number.	Name of Specimen.	Description of the Specimen.	Number of Specimens.
41	<i>Blue-faced Entomyza</i>	Young Mau Bird	1
42	386. Yellow-rumped Tarrakeet	No Dist. - <i>Mor.</i>	1
43	do do	do	1
44	do do	do	1
45	do do	do	1
46	do do	do	1
47	Green bellied Tarrakeet	with Yellow Patch ^{similar to no 42.} <i>Mor.?</i>	1
48	Red Rumped do	Mau Bird	1
49	do do	do do	1
50	Wood Swallow	White Rump no dist. <i>Mor.</i>	1
51	Friar Bird		1
52	<i>Black-headed traucalus</i>		1
53	Young Tawite		1
54	Large billed Tamarinus	Mau Bird	1
55	Small billed Tamarinus	No dist. - <i>Mor.</i>	1
56	do	do	1
57	Tawite		1
58	Black striped Thrush		1
59	Tawite		1
60	311 Friar Bird	with yellow Throat	1

NATURAL HISTORY OF VICTORIA.

Locality whence obtained.

Donor's Name.

Remarks.

Exchanged; see our book, p. 21.

The first specimen which was seen, was at the Plains between the Campaspe and the Hodgson.

CATALOGUE OF THE MUSEUM OF

Museum Number.	Name of Specimen.	Description of the Specimen.	Number of Specimens.
61	311. Friar Bird	with yellow throat	1
62	477. Banded Gnatcatcher	with red knee	1
63	do do	" " "	1
64	R11560 do do	Young Bird	1
65	do do	with red knee	1
66	do do	" " "	1
67	R11559 do do	" " "	1
68	74. Wood Swallow	with white knee	1
69	do do	" " " Young Bird	1
70	358. Cuckoo	unadorned	1
71	204. Honeycreeper ^{young Cuckoo}	White plumed. Cuckoo?	1
72	217. ^{II} _I Eptianura	White groused	1
73	White-eyed Honeycreeper		1
74	do. Sacred Halcyon		1
75	452. Tictoral Oriole	Male Bird	1
76	do do	female do	1
77	do do		1
78	do do	Male do	1
79	do do	Male do	1
80	171. Blue Wren	Male do	1

NATURAL HISTORY OF VICTORIA.

Locality whence obtained.

Donor's Name.

Remarks.

Seen at old churchyard

CATALOGUE OF THE MUSEUM OF

Museum Number.	Name of Specimen.	Description of the Specimen.	Number of Specimens.
81	50 Sacred Halcyon	No dist test M & J.	1.
82	385. Parrakeet	Yellow bellied	1.
83	12. Kestrel ?		1
84	do	Seede Bird	1
85	do	Young Shaw do	1
86	do		1
87	55. Australian Peewee		1
88	do do		1
89	do do		1
90	do do		1
91	do do		1
92	do do		1
93	do do	Young Bird	1.
94	do do	do do	1
95	do do	do do	1
96	do do	do do	1
97	do do	do do	1
98	do do	do do	1
99	do do	do do	1
100	do do	do do	1

CATALOGUE OF THE MUSEUM OF

Museum Number.	Name of Specimen.	Description of the Specimen.	Number of Specimens.
101	55. Australian Peewee	Young Bird	1
102	do do	do do	1
103	do do	do do	1
104	do do	do do	1
105	do do	do do	1
106	231. Firetailed Finch		1
107	55. Australian Peewee		1
108	do do		1
109	Banded Gull	with red knee	1
110	do do	do	1
111	do do	do	1
112	Trojan Bird	with yellow throat	1
113	Farrakeet	with yellow rump	1
114	do	do do Bread	1
115	372. Funeral Cuckoo	Black Bill purple tints on skin	1
116	do do	Female Bird with whitish horned bill, black round the eyes and simple pinkish feet.	1
117	do do	etian	1
118	462. Southern Stone Curlew		1
119	541. Wood Duck	Young female	1
120	do do		1

NATURAL HISTORY OF VICTORIA.

Locality whence obtained.

Donor's Name.

Remarks.

Gumbower Creek

Common Bird preferring
the Pine forest and
is seen mostly toward
sunset on the dry branches
of high Eucalypti.

Gumbower Creek
and the neighboring
Lagoons

Gumbower Creek

often met with on
Sandy Hills covered
with Pine

Gumbower Creek

Plenty on the Lagoons
and on the Creek
in flocks from
2 to 20 and more
in particular on those
of the Darling

CATALOGUE OF THE MUSEUM OF

Museum Number.	Name of Specimen.	Description of the Specimen.	Number of Specimens.
121	^{541.} Wood Duck	Young female	1
122	do do	do do	1
123	579. Nanken Bird		1
124	20. Pied Cormorant.		1
125	528. Stryconia.	Black tailed with green Bill no disc between wings.	1
126	do	do	1
127	do	do	1
128	do	do	1
129	11 Brown Hawk		1
130	white throated Falcon.		1
131	26. Allied Harrier	female	1
132	do	Young male	1
133	Elegant Grass		1
134	399 Parrakeet		1
134	Yellow Rumped Parrakeet		1
135	do	Skull etc all	1
136	do	do S.P	1
137	^{477.} Banded red knee Gull	do	1
138	405. Redgerigan	do female	1
139	^{477.} Banded red knee Gull	do	1
140	do do	do	1

NATURAL HISTORY OF VICTORIA.

Locality whence obtained.

Donor's Name.

Remarks.

Gumbauer Creek

*Collected in great numbers
at the Loddon and
Murray River and near
Gumbauer Creek*

a rare bird

*very plentiful on the
Loddon in the open plains
in February*

CATALOGUE OF THE MUSEUM OF

Museum Number.	Name of Specimen.	Description of the Specimen.	Number of Specimens.
141	477. Band tailed Petrel	Skeleton	1
142	397. Red Rump Tarrabul.	do	1
143	Budgerigar	do ad.	1
144	74. Wood Swallow ^{with rump}	do	1
145	Honeyeater	do	1
146	343. Bronze Cuckoo	do	1
147	White eared Honeyeater	do	1
148	127. Crested Oriole	do	1
149	Kangaroo Rat	do	1
150	Red Eyebrow ^d Finch	do	1
151	Black throated Flycatcher Blue faced	do	1
152	Antomyca	female Bird ?	1
153	Triar Bird	do do	1
154	do	do no yellow	1
155	Trikonya	do	1
156	do	do	1
157	Pittman		1
158	Auss. Heron	Black Spotted	1
159	Spoon bill	young female	1
160	do	do	1

NATURAL HISTORY OF VICTORIA.

Locality whence obtained.

Donor's Name.

Remarks.

*Sandhills near the
Gambour Creek*

*Often met with but always
single.*

CATALOGUE OF THE MUSEUM OF

Museum Number.	Name of Specimen.	Description of the Specimen.	Number of Specimens.
161	<i>Lacerated Honeyeater female</i>		/
162	<i>do</i>		/
163			
164			
165			
166			
167			
168			
169			
170	<i>Pademulen</i>		16
171			
172			
173			
174			
175			
176			
177			
178			
179			
180	<i>Kangaroo Rat</i>		1.

NATURAL HISTORY OF VICTORIA.

Locality whence obtained.

Donor's Name.

Remarks.

In dense scrub, may be two species?

CATALOGUE OF THE MUSEUM OF

Museum Number.

Name of Specimen.

Description of the Specimen.

Number of Specimens.

181

182

183

184

185

186

187

188

189

190

191

192

193

194

195

196

197

198

199

200

Adamsia

Hungarinnias

3

Vanuatu Rat

Lenau

1.

Emu.

do

1.

Spotted Lizards

Montony

5

Lined Lizards

variegated

5.

N.Z.L. Butcher Bird

1

Red cap'd Robin

1

Laucelotid Honeyeater f

1

Wood Swallow (white eye brows)

1

Blue faced Entomyza

Exchanged: see out book, p. 21

1

NATURAL HISTORY OF VICTORIA.

Locality whence obtained.

Donor's Name.

Remarks.

Sandy Hills near
Mt Hope

these little Wallaby, and
very plentiful in the
neighbourhood of Mt
Hope

Mt Hope

scrub near
Mt Hope
& Gunpowder Creek

Ran Bird

21.

CATALOGUE OF THE MUSEUM OF

Museum Number.	Name of Specimen.	Description of the Specimen.	Number of Specimens
<i>List No II from Gunner</i>			
201	<i>Brown bellied Hawk</i>	?	1
202	<i>do do</i>	?	1
203	<i>do do</i>	♂	1
204	<i>Little Australian Eagle</i>	?	1
205	<i>do do</i>	?	1
206	<i>Little winged Owl</i>	?	1
207	<i>Spoonbill</i>	all	1
208	<i>do</i>	all	1
209	<i>young Spoonbill</i>	?	1
210	<i>do do</i>	?	1
211	<i>do do</i>	?	1
212	<i>White bellied Cormorant</i>	?	1
213	<i>do do</i>	?	1
214	<i>Saukenig's Heron</i>	?	1
215	<i>do do</i>	?	1
216	<i>do do</i>	<i>young</i> ?	1
217	<i>do do</i>	?	1
218	<i>Great Gray Heron</i>	?	1
219	<i>do do</i>	?	1
220	<i>White fronted do</i>	?	1

NATURAL HISTORY OF VICTORIA.

Locality whence obtained.

Donor's Name.

Remarks.

New Swamp

Swamps and
Lagoons in the
neighbourhood of
Old Hope and
the Murray
River

CATALOGUE OF THE MUSEUM OF

Museum Number.	Name of Specimen.	Description of the Specimen.	Number of Specimens.
221	<i>Corpyia</i>		1
222	<i>Australian Coot</i>		1
223	<i>do do</i>		1
224	<i>Tribouyse</i>	<i>all</i>	1
225	<i>do</i>	<i>f.</i>	1
226	<i>Stone Plover</i>	<i>f.</i>	1
227	<i>Shunwinged Plover</i>		1
228	<i>Australian Shoveller</i>		1
229	<i>Musk Duck young</i>		1
230	<i>Piping Crow Shrike</i>	<i>all</i>	1
231	<i>do do</i>	<i>all</i>	1
232	<i>do do</i>	<i>f</i>	1
233	<i>Spotted Plover Bird</i>	<i>?</i>	1
234	<i>do do</i>	<i>?</i>	1
235	<i>do do</i>	<i>?</i>	1
236	<i>do do</i>	<i>?</i>	1
237	<i>do do</i>	<i>?</i>	1
238	<i>do do</i>	<i>?</i>	1
239	<i>do do</i>	<i>?</i>	1
240	<i>do do</i>	<i>?</i>	1

NATURAL HISTORY OF VICTORIA.

Locality whence obtained.

Donor's Name.

Remarks.

Swamp near the Murray

Scrubby Country near the Murray

do

This bird is very plaintive, going in flocks and hopping from branch to branch. They are very noisy in particular if any straggler is just come to their view.

This Bird keeps in the dense scrub near the creeks and hedges and is very shy.

CATALOGUE OF THE MUSEUM OF

Museum Number.	Name of Specimen.	Description of the Specimen.	Number of Specimens.
241	<i>Crossed Power Bird</i>		1
242	<i>do do young</i>		1
243	<i>do do "</i>		1
244	<i>do do "</i>	<i>Exchanged - See out book, p. 21</i>	1
245	<i>do do "</i>		1
246	<i>do do "</i>		1
247	<i>do do "</i>		1
248	<i>do do "</i>		1
249	<i>do do "</i>		1
250	<i>Yellow bellied Parakeet</i>		1
251	<i>do do "</i>		1
252	<i>do do "</i>		1
253	<i>do do "</i>		1
254	<i>do do "</i>		1
255	<i>do do "</i>		1
256	<i>do do "</i>		1
257	<i>Green bellied do</i>		1
258	<i>do do "</i>		1
259	<i>Crimson bellied do</i>		1
260	<i>do do "</i>		1

NATURAL HISTORY OF VICTORIA.

Locality whence obtained.

Donor's Name.

Remarks.

Wm. Mac Crabb

CATALOGUE OF THE MUSEUM OF

Museum Number.	Name of Specimen.	Description of the Specimen.	Number of Specimens.
261	<i>Crested Parakeet</i>	<i>sk</i>	/
262	<i>do do</i>	<i>sk</i>	/
263	<i>Green Leek do</i>	<i>sk</i>	/
264	<i>Buggery gah</i>	<i>?</i>	/
265	<i>do</i>	<i>?</i>	/
266	<i>do</i>	<i>?</i>	/
267	<i>do</i>	<i>?</i>	/
268	<i>do</i>	<i>?</i>	/
269	<i>Blue faced Antomyza</i>		/
270	<i>Yellow faced do</i>		/
271	<i>do do</i>		/
272	<i>do do</i>		/
273	<i>do do</i>		/
274	<i>Yellow throated Tiarar Bird</i>		/
275	<i>do do</i>	<i>?</i>	/
276	<i>do do</i>	<i>?</i>	/
277	<i>do do</i>	<i>Exchanged = see out book, p. 21.</i>	/
278	<i>do do</i>	<i>?</i>	/
279	<i>do do</i>	<i>?</i>	/
280	<i>do do</i>	<i>?</i>	/

NATURAL HISTORY OF VICTORIA.

Locality whence obtained.

Donor's Name.

Remarks.

Slack Country near
Mount Hope

rare Birds in
this locality

Scrub near
Graham's Creek

Very shy and often mistaken
for the Masked Honeyeater

CATALOGUE OF THE MUSEUM OF

Museum Number.	Name of Specimen.	Description of the Specimen.	Number of Specimens.
281	<i>Yellow throated Spar Bird</i>		1
282	<i>Spine chuted Wattle Bird</i>		1
283	<i>do do</i>		1
284	<i>do do</i>		1
285	<i>Temporal Pomathornis</i>		1
286	<i>do do</i>		1
287	<i>do do</i>		1
288	<i>do do</i>		1
289	<i>do do</i>		1
290	<i>do do</i>		1
291	<i>do do</i>		1
292	<i>do do</i>		1
293	<i>White eyebrowed do</i>		1
294	<i>do do</i>		1
295	<i>do do</i>		1
296	<i>do do</i>		1
297	<i>do do</i>		1
298	<i>do do</i>		1
299	<i>do do</i>		1
300	<i>Lauced Honeyeater</i>		1

NATURAL HISTORY OF VICTORIA.

Locality whence obtained.

Donor's Name.

Remarks.

Lonely country
near Gunbower
Creek.

This Bird converses in
long numbers and is
constantly moving about
hopping from branch
to branch up to the top
of the tree when it flys
off

CATALOGUE OF THE MUSEUM OF

Museum Number.	Name of Specimen.	Description of the Specimen.	Number of Specimens.
301	Lanceolated Honeyeater		1
302	do do		1
303	do do		1
304	Selys Catturicinda	Exchanged = see out book, p. 21.	1
305	five barred Graucalus		1
306	do do		1
307	do do y.		1
308	Black faced do		1
309	White bellied do f.		1
310	Ground Graucalus		1
311	rusty breasted Bee-eater	Exchanged = see out book, p. 21.	1
312	do do		1
313	do do		1
314	do do y		1
315	do do "		1
316	do do "		1
317	do do		1
318	Black fronted Tattler		1
319	Crested Ibis		1
320	do do		1

NATURAL HISTORY OF VICTORIA.

Locality whence obtained.

Donor's Name.

Remarks.

Has a different note
from the species found
near the coast

very rare Birds

very rare and exceedingly
difficult to approach. —

CATALOGUE OF THE MUSEUM OF

Museum Number.	Name of Specimen.	Description of the Specimen.	Number of Specimens.
321	Crested Oriole	♂	1
322	Russet Bird		1
323	Blue Wren		1
324	Brown throated Pachycephala	♂	1
325	Banded Thick Head	♂	1
326	do do		1
327	do do	♀	1
328	White bellied Oriole	♂	1
329	Super back? Russet bird		1
330	Little Tree creeper	♀	1
331	do do		1
332	Leipoa	♀	1
333	Spruled Tit Shrike	♂	1
334	Chestnut backed Hemipoda	♂	1
335	Ground Francalut	♂	1
336	do do	♂	1
337	White breasted Tomatorius	<u>Skellens</u>	1
338	Red cap Robin	♀	1
339	White bellied Oriole		1
340	Green bellied Parrakeet	♂	1

NATURAL HISTORY OF VICTORIA.

Locality whence obtained.

Donor's Name.

Remarks.

Neighbourhood of
Elmore Hill

this Bird feeds principally
on insects

a very common
Bird

found in this
locality very shy
and constantly on the
ground

CATALOGUE OF THE MUSEUM OF

Museum Number.	Name of Specimen.	Description of the Specimen.	Number of Specimens.
341	<i>Melitrepus</i> ♂		1
342	<i>Sally's Colluricincla</i> ?		1
343	leather Head ♂		1
344	<i>Hauke's Night Heron</i>		1
345	<i>Yellow bellied Parakeet</i>		1
346	do do		1
347	do do		1
348	<i>Australian Peewee</i>		1
349	<i>Shine checked Water Bird</i> ♂		1
350	<i>Australian Peewee</i>		1
351	<i>Black fronted Gull</i>		1
352	<i>Ground Graculus.</i>		1
353	<i>Kangaroo</i> ♂		1
354	<i>Kangaroo Rat</i> ♂		1
355	<i>Mouse</i> ♂		1
356	<i>Pademelon</i> ♂		1
357	do ♂		1
358	do ♂		1
359	do ♂		1
360	do ♂		1

NATURAL HISTORY OF VICTORIA.

Locality whence obtained.

Donor's Name.

Remarks.

*not identical with
ellacropus major*

CATALOGUE OF THE MUSEUM OF

Museum Number.	Name of Specimen.	Description of the Specimen.	Number of Specimens.
361	<i>Sademulen</i>		1
362	<i>do</i>	<i>f</i>	1
363	<i>do</i>		1
364	<i>do</i>	<i>sk</i>	1
365	<i>do</i>		1
366	<i>do</i>	<i>sk</i>	1
367	<i>do</i>	<i>sk</i>	1
368	<i>do</i>	<i>f</i>	1
369	<i>do</i>	<i>r</i>	1
370	<i>do</i>		1
371	<i>do</i>	<i>head sk</i>	1
372	<i>do</i>	<i>4 f</i>	1
373	<i>do</i>	<i>4 sk</i>	1
374	<i>do</i>	<i>4 sk</i>	1
375	<i>do</i>	<i>Young</i>	1
376	<i>do</i>	<i>r</i>	1
377	<i>Wangaroo</i>	<i>head sk</i>	1
378	<i>do</i>	<i>Young</i>	1
379	<i>Carpenter Snake</i>		1
380	<i>Striped Lizard</i>		1

NATURAL HISTORY OF VICTORIA.

Locality whence obtained.

Donor's Name.

Remarks.

Neighbourhood
of
Mount Hope

This is a small slender
species growing in the
branches in May

NATURAL HISTORY OF VICTORIA.

Locality whence obtained.

Donor's Name.

Remarks.

at and near
Gumburra Creek

This Bird breeds during the
month of November. It
and its mate sit its eggs
into holes dug deep into
the sandy soil.
Number of Eggs from 2 lay
quite white & rounded off

Exchanged: see Out book p. 21.

CATALOGUE OF THE MUSEUM OF

Museum Number.	Name of Specimen.	Description of the Specimen.	Number of Specimens.
381	Striped Lizard		1
382	Spotted do		1
383	do do head		1
384	Striped do		1
385	Wings tailed Egernia	sk	1
386	Green bellied Parakeet		1
387	do do	sk	1
388	do do	f	1
389	Yellow bellied do		1
390	Piping Crow Shrike	y.	1
391	Blue faced Eulomysa		1
392	do do		1
393	Yellow faced do		1
394	lanceolated Honeycreeper	sk	1
395	do do		1
396	little Traucalus	sk	1
397	do do	f	1
398	Buscher Bird	f	1
399	Yellow throated friar Bird		1
400	Elays Collumicunda		1

NATURAL HISTORY OF VICTORIA.

Locality whence obtained.

Donor's Name.

Remarks.

This large Lizard is sometimes
observed on the ground
and when chased will
ascend a tree with
the greatest facility
seeking shelter in
a leafy branch.

Found in the stomach
of the brown shinned
snake

In the Boxwood flats

Near the Swamps and
Lagoons in Eucalypti

Often met with, but not
readily recognized as this
kind always moves about among
the top most branches of

CATALOGUE OF THE MUSEUM OF

Museum Number.	Name of Specimen.	Description of the Specimen.	Number of Specimens.
<u>List No. III from Gumbover February 16th 1857</u>			
401	Pied Cormorant	♂	1
402	do do	♂	1
403	Shore White-necked Crane	♀	1
404	do do		1
405	do do		1
406	do do		1
407	do do		1
408	do do		1
409	Bank Swallow	♂	1
410	Wood Duck	♂	1
411	do		1
412	Yellow bellied Parrot	♀ Exchanged = see out book. p. 21.	1
413	Green bellied do	♂	1
414	do do	♂	1
415	do do	♀	1
416	do do	♂	1
417	Crimson bellied do	♀	1
418	do do	♀	1
419	do do	♂	1
420	do do	♀	1

NATURAL HISTORY OF VICTORIA.

Locality whence obtained.

Donor's Name.

Remarks.

At New Swamp this Bird
was very plenty full some
of the trees were quite
covered with them.

New Swamp

CATALOGUE OF THE MUSEUM OF

Museum Number.	Name of Specimen.	Description of the Specimen.	Number of Specimens.
421	Emmerson bellied Parrot ^{all} ♂		1
422	do do ♂		1
423	do do ♂		1
424	do do ^{all}		1
425	Red rumped Grassparakeet [♂]		1
426	Spotted Power Bird		1
427	Blue faced Eudomyza		1
428	Yellow friar Bird		1
429	Spotted Power Bird [♂]		1
430	Blue faced Eudomyza		1
431	W. L. Buscher Bird ^{all}		1
432	Red rumped Grassparakeet [♂]		1
433	Little Hummer Bird [♂]		1
434	do do ^{all}		1
435	Pudlapia Lark ^{all}		1
436	Coluricunda ^{all}		1
437	Yellow throated friar Bird ^{all}		1
438	Scar blue Kingfisher		1
439	Selby's Coluricunda		1
440	Crested Troica		1

NATURAL HISTORY OF VICTORIA.

Locality whence obtained.

Donor's Name.

Remarks.

*At Camissons Station
still a few flocks of near
100 birds were seen during
the month of January*

CATALOGUE OF THE MUSEUM OF

Museum Number.	Name of Specimen.	Description of the Specimen.	Number of Specimens.
441	Australian Peewee		1
442	White rumped Wood Swallow Yellow throated Friar Bird		1
443	Yellow throated Friar Bird		1
444	White rumped Wood Swallow		1
445	Brown Tree Creeper f		1
446	Crested Oriole f		1
447	Sacred Kingfisher m		1
448	Crested Oriole m		1
449	White rumped Wood Swallow ^y		1
450	Swoot c		1
451	Crested Oriole f		1
452	Launceston Honeyeater ^m		1
453	White rumped Wood Swallow ^f		1
454	Semipalmated Goose		1
455	Crested Oriole f		1
456	Sally's Collared Kingfisher		1
457	Black fronted Tattler ^f		1
458	do do m		1
459	Brown Tree Creeper f		1
460	Launceston Honeyeater ^m		1

NATURAL HISTORY OF VICTORIA.

Locality whence obtained.

Donor's Name.

Remarks.

*Juniper
Creek*

*a rare bird in this
Locality*

CATALOGUE OF THE MUSEUM OF

Museum Number.	Name of Specimen.	Description of the Specimen.	Number of Specimens.
461	Red Robin	sk	1
462	do	sk	1
463	Pachycephala		1
464	Swift	f	1
465	Red Lark	f	1
466	Rufous rumped do		1
467	New Holland Tropic	f	1
468	do do	f	1
469	Kangaroo Rat	f	1
470	do do	sk	1
471	Large Striped Lizard		1
472	Carpet Snake		1
473	Black throated ^{Skimmings} Tranculus	sk	1
474	Little Parathorinus		1
475	White Cuckoo	sk	1
476	White rumped Wood Swallow		1
477	Ornate Bird	sk	1
478	Green bellied Parrot	sk	1
479	do do	sk	1
480	White rumped Wood Swallow		1

NATURAL HISTORY OF VICTORIA.

Locality whence obtained.

Donor's Name.

Remarks.

Neighbourhood
of
Murray's Lake

vide Report from
Western Port 1854 & 1855

This bird lives on
small Bines also and when
stomach was opened contained
the remains of Bines

CATALOGUE OF THE MUSEUM OF

Museum Number.	Name of Specimen.	Description of the Specimen.	Number of Specimens.
481	<i>Shine checked Warbler</i> ^{ch} <i>bird</i>		1
482	<i>Crimson bellied Tarraxet</i> ^{ch}		1
483	<i>Crested Tit</i> <i>Shrike</i> ^f		1
484	<i>White rumped Wood</i> ^{ch} <i>Swallow</i>		1
485	<i>Blue fronted Grass</i> ^f <i>parrot</i>		1
486	<i>Crested Tit</i> <i>Shrike</i>		1
487	<i>White rumped Wood</i> ^f <i>Swallow</i>		1
488	<i>Carpet Snake</i>		1
489	<i>do</i>		1
490	<i>Psometen</i>		1
491	<i>do</i>		1
492	<i>do</i>		1
493	<i>do</i>		1
494	<i>do</i>		1
495	<i>do</i>		1
496	<i>do</i>		1
497	<i>do</i>		1
498	<i>do</i>		1
499	<i>Red Cap'd Robin</i>		1
500	<i>Turkey</i>		1

NATURAL HISTORY OF VICTORIA.

Locality whence obtained.

Donor's Name.

Remarks.

in Eucalypsi

Harmless to man. but if attacked or hurt will defend itself and will then become dangerous. —

*Sandra Hill &
Creek near
Gumbower Creek*

*not with in any country
P. 200*

CATALOGUE OF THE MUSEUM OF

Museum Number.	Name of Specimen.	Description of the Specimen.	Number of Specimens.
	<u>List etc. IV from Guilford Station</u>		
501	Leipha Eggs		11.
502	4 Spoon Bills Eggs. 44. Pied Cormorant Eggs		46.
503	25 Turtli Eggs		25
504	2 Lesser Duck } Eggs 2 Spoon Bill }		4
505	1 Bag Sand		1
506	1 " do		1
507	100 Urin m x f & E		100
508	100 do m x f & E		100
509	Stone Tomahawk	made by Lodde's Natives	1
510	do do		1
511	Graptolites Adalaris		5
512	Granit from Mount Hope		7
513	Larks Nests and 2 Eggs		3.
514	300 Lyncea A		300
515	500 do A		500
516	500 do B		500
517	Bugs		50
518	8 Peccaters Eggs		8
519	200 Bivalve Shells D		200
520	20 ? Cyclas? F		20.

NATURAL HISTORY OF VICTORIA.

Locality whence obtained.

Donor's Name.

Remarks.

Procured after a diligent search of three days with the natives and some water was to be met with, the party suffered a great deal

the female deposits her eggs into the holes along the creek banks that are from 20 to 40 crammed into a small recess not larger than a fist

into which the Bee-eater deposits its eggs, the bird grows on it and into it the natives bury their dead

Is only found in Lagoons near the River and esteemed by the natives as an article of food. It is preferred to the one found in the River

Swamp near Mt Hope

Miss Gardner of Gumbower

do do

~~at~~ near Deep Creek

~~at~~ Mt Hope

always on the ground

Lagoons near Mt Hope

They differ in shells and not so difficult to be got as people in how might think or guess many women and children were engaged in collecting this number

Sandhills near Gumbower Creek

Swamp & Lagoons

very rare

53

CATALOGUE OF THE MUSEUM OF

Museum Number.	Name of Specimen.	Description of the Specimen.	Number of Specimens.
521	40 Lymnaea of light color		40
522	1 Spider		1
523	Egg		1
524	1 Bottle Mineral Water	This water used to be sweet and has only recently turned brackish as Mr. De la Harpe informed	1
525	Granite with Thonle		1
526	Leadbeaters Cockatoo f		1
527	do f		1
528	do m		1
529	do m		1
530	do m		1
531	Pandina 30. ^{with} _{cherry}		30
<u>List No. VI Gunbower February 28th 1857</u>			
532	Sacred Kingfisher sea ?		1
533	H. D. L. Butcher bird m		1
534	Shine checked Honeyeater f		1
535	White nuthed Woodswallow		1
536	Oriole f.		1
537	Pachycephala. m ?		1
538	Red cap Robin m.		1
539	Tree Swallow m		1
540	Tree Swallow ?		1

NATURAL HISTORY OF VICTORIA.

Locality whence obtained.

Donor's Name.

Remarks.

Mr McDonald ^{at Hope}

This Bird was shot
as a piece of
olden scrub in
the neighbourhood of
Campbell Station

A name Bird in
this locality but not
so shy as the large
suck. Crest. Cuckoo

this Parus cephalus is often
met with at the Lower
Cannon
There is a very small
number of these birds in
the

CATALOGUE OF THE MUSEUM OF

Museum Number.	Name of Specimen.	Description of the Specimen.	Number of Specimens.
541	<i>Sericornis</i>	all.	1
542	Red Cap Robin	all	1
543	Zosterops	all	1
544	Rufous rumped Acanthiza		1
545	Zosterops	?	1
546	Sw Lizard		1
547	Spotted neck Crane	f	1
548	Goose	f	1
549	Goose	f	1
550	Red Robin Skullion	all.	1
551	Zosterops		1
552	Spotted neck Crane Skullion		1
553	Green bellied Tanna Kest		1
554	Crested Oriole		1
555	Selys Colluricincla		1
556	White rumped Wood Swallow	all.	1
557	do do do	y f	1
558	Spotted neck Crane	all	1
559	Grey green or plain colored Finch		1
560	Rufous rumped Acanthiza	all	1

NATURAL HISTORY OF VICTORIA.

Locality whence obtained.

Donor's Name.

Remarks.

*Common at the lower
alluvial but very rare at
Caulfield*

From the Scrub

From the Scrub

CATALOGUE OF THE MUSEUM OF

Museum Number.	Name of Specimen.	Description of the Specimen.	Number of Specimens.
561	<i>Rufus nuchid Acauthiza</i>	sk.	1
562	do do do	sk.	1
563	Honeyeater	sk.	1
564	Red Lark	f	1
565	Cockoo	sk.	1
566	Shelled Neck Crane	sk.	1
567	<i>Telys Callurucinda</i>	Skull and	1
568	Grygon		1
569	<i>Rufus nuchid Acauthiza</i>	sk.	1
570	do do	sk. Exchanged = see out book, p. 21	1
571	Fantail	f	1
572	<i>Quirconis</i>	f	1
573	<i>Rufus nuchid Acauthiza</i>	sk.	1
574	White bellied Flycatcher	sk.	1
575	Grygon little Finch	sk.	1
576	Grygon or plain col Finch	sk.	1
577	do	sk.	1
578	White eared Honeyeater	sk.	1
579	<i>Melitreplus</i>		1
580	Grygon or plain col Finch		1

CATALOGUE OF THE MUSEUM OF

Museum Number.	Name of Specimen.	Description of the Specimen.	Number of Specimens.
581	Gerygon		1
582	do	f	1
583	do	all	1
584	Striped Lizard	f	1
585	Red Cap Robin	skullum	1
586	Trochilops	" all	1
587	Gerygon		1
588	Yellow faced Honeyeater	sk	1
589	Striated D. Bird	"	1
590	Yellow faced Honeyeater	all	1
591	Egernia Lizard		1
592	Red Cap Robin	all	1
593	do do	all	1
594	do do	yea	1
595	Gerygon		1
596	Robin (Red Cap form)		1
597	Gerygon		1
598	Trochilops	f	1
599	Chiracca?		1
600	Gerygon	all	1

NATURAL HISTORY OF VICTORIA.

Locality whence obtained.

Donor's Name.

Remarks.

This little bird is
 found well distributed
 all over the forest
 bush scrub etc
 near the River Murray

in the Plains

61.

CATALOGUE OF THE MUSEUM OF

Museum Number.	Name of Specimen.	Description of the Specimen.	Number of Specimens.
601	Shine checked Honeyeater	sk	1
602	Cuckoo	f	1
603	Gerygon	sk	1
604	do	f	1
605	do	f	1
606	Striped large Lizard		1
607	Flycatcher white eye brow	sk	1
608	Kangaroo Rat		1
609	Goose	f	1
610	do	sk	1
	do		
611	Yellow throated Spar Pindell	f	1
612	" " " "		1
613	Turdalose	f	1
614	Micrasca plain	f Exchanged - see out-book, p. 21	1
615	little Eagle	sk	1
616	Small Neck Crane	f	1
617	Magpie Goose	f	1
618	Common Wood Swallow	f	1
619	Whiskered Finch	sk	1
620	Red cap Robin	sk	1

NATURAL HISTORY OF VICTORIA.

Locality whence obtained.

Donor's Name.

Remarks.

New Swamp

*a new bird in
this part of the country*

CATALOGUE OF THE MUSEUM OF

Museum Number.	Name of Specimen.	Description of the Specimen.	Number of Specimens.
621	Gorygon		1
622	Should Neck Crane	♂	1
623	Goose	♂	1
624	Blue faced Entomyza	sk	1
625	Fish Tarum from Gumbower		1
626	Egernia Lizard		1
627	Fish Tarum		1
628	do do		1
629	large striped Lizard		1
630	Pademelau Skull		1
631	Sacred Halcyon		1
632	Mus of Crested Oriole		1
633	Cuckoo		1
634	Bronsewinged Pigeon		1
635	Epthionura	sk	1
636	do	♂	1
637	do	♂	1
638	Grassparakeet	sk	1
639	Pachycephala	sk	1
640	Bronze Cuckoo (two)	sk	1

NATURAL HISTORY OF VICTORIA.

Locality whence obtained.

Donor's Name.

Remarks.

*in the neighbourhood
of Mt Hope and
New Swamp*

CATALOGUE OF THE MUSEUM OF

Museum Number.	Name of Specimen.	Description of the Specimen.	Number of Specimens.
641	Little Pomarine Petrel		1
642	Loon		1
643	Lanceolated Honeyeater		1
644	do	♂	1
645	Trial Bird	♂	1
646	Shelduck		1
647	Selby's Collared Kingfisher		1
648	Brown-throated Wallaby		1
649	Trial Bird		1
650	Collingwood Fish		1
651	Kangaroo & Rat		1
652	Pomarine Petrel	♂	1
653	do	♂	1
654	do	egg	1
655	Turtle	egg	1
656	do	♂ 11 1/2 x 9	1
657	Shells E 20.		20
658	do F 48		48
659	do H 5		5
660	do D 44		44

NATURAL HISTORY OF VICTORIA.

Locality whence obtained.

Donor's Name.

Remarks.

From the Billy boys

From Gumbauer
Creek

Shells and very
very plenty but now as the
water is not sufficiently
evaporated to make the
natives to catch the
Turtles

Shells and very
numerous in inundated
places etc when they are
left to perish after the
water is dried up

CATALOGUE OF THE MUSEUM OF

Museum Number.	Name of Specimen.	Description of the Specimen.	Number of Specimens.
661	Shells B 40		40
662	do C 25		25
663	Turtle	f	1
<hr/> <i>List III from the Museum bridged Junction 24 March 1857</i>			
664	Fish Turriti, Prebau		12. 20
665	Fish stack 50		50
666	Salts from near lake Poga		1
667	do do fine		1
668	little Australian Eagle		1
669	Succinea A		1
670	Snake Bird	f	1
671	White throated Goatsucker	f	1
672	Emu	y	1
673	little Australian Eagle	f	1
674	Welcome Swallow	sk	1
675	Spine checked Honeyeater		1
676	Collard plain Warbler		1
677	Laurel leaved Honeyeater		1
678	Black headed Bushbird		1
679	White throated Goatsucker	Skull	1
680	Black headed Bushbird	Skull	1

NATURAL HISTORY OF VICTORIA.

Locality whence obtained.

Donor's Name.

Remarks.

From the Murray River

This salt has been obtained from a little Lake in the Mallee Scrub about 400 yards across. All the other lakes and swamps with good water. What is the cause of this?

Lake Boya

from Lake Boya

from Gunbower Creek

This is a very rare bird

CATALOGUE OF THE MUSEUM OF

Museum Number.	Name of Specimen.	Description of the Specimen.	Number of Specimens.
681	Selby's Colluricincla		1
682	Temporal Pannationis etc		1
683	Red capd Robin etc		1
684	White winged Wren etc		1
685	Hydnorhis etc		1
686	Bat		1
687	Elegant Grassharracket	Exchanged - See out book p. 21.	1
688	Chestnut col Shrike		1
689	Spur winged Plover		1
690	Welcome Swallow ?		1
691	do ?		1
692	White winged Wren L. Boga		1
693	Cacypsephala etc		1
694	Adamsian Skua		1
695	Elegant Grassharracket etc		1
696	Great Sandpiper etc		1
697	Dusky Finch etc		1
698	Welcome Swallow		1
699	Great Sandpiper		1
700	Red capd Gull		1

R11587

NATURAL HISTORY OF VICTORIA.

Locality whence obtained.

Donor's Name.

Remarks.

from the
neighbourhood
of
Lake Boga

CATALOGUE OF THE MUSEUM OF

Museum Number.	Name of Specimen.	Description of the Specimen.	Number of Specimens.
701	Red capd Towhee	R11586	1
702	Crimson bellied Parakeet	Exchanged - see out book, p. 21.	1
703	Red capd Towhee	♂	1
704	White winged Wren	♂	1
705	do do	♂ Exchanged - see out book, p. 21.	1
706	do do	ch	1
707	Lanceoloid Honeyeater	♂	1
708	Crested	ch	1
709	Pictorial Quail		1
710	White winged Wren		1
711	Red capd Towhee	♂	1
712	White winged Wren	♂	1
713	Honeyeater Lake Baya		1
714	Scrubwren Pomatorhinus	♂	1
715	Crimson bellied Parakeet	♂	1
716	Red capd Robin	ch	1
717	Little Brown winged Flycatcher		1
718	Honeyeater	♂ Baya	1
719	do	♂	1
720	Wren	juv	1

NATURAL HISTORY OF VICTORIA.

Locality whence obtained.

Donor's Name.

Remarks.

the Salt Bush
scrub near
Lake Boga

This pretty little bird
is very shy and runs
through the scrubby salt
bushes as a great noise
always rising out of sight
of the observer and
it is only with great
perseverance that it
is secured. —
Found on from 5 to 10 feet
to and over land. —

Lake Boga
and
the surrounding
Country

Requies with Hamilton Station
to the North of the junction
of Murray and Starnaulidge

CATALOGUE OF THE MUSEUM OF

Museum Number.	Name of Specimen.	Description of the Specimen.	Number of Specimens.
721	White winged Wren	♂	1
722	Flycatcher		1
723	Striated Red Lark	♂	1
724	Rose breasted Cockatoo	♂.	1
725	Flycatcher		1
726	Welcome Swallow		1
727	White winged Wren	♂	1
728	Rose breasted Cockatoo		1
729	do do		1
730	do do	Exchanged. See out book, p. 21.	1
731	do do	♂	1
732	long billed Cockatoo		1
733	do do	♂	1
734	Rose breasted do		1
735	Scopy Owl	♂	1
736	White rumped Wood Swallow	♂	1
737	do do	♂	1
738	do do		1
739	do do	♂	1
740	Elegant Grass parakeet		1

NATURAL HISTORY OF VICTORIA.

Locality whence obtained.

Donor's Name.

Remarks.

Neighbourhood
of
Lake Poga
and
the Banks of
the Murrumbidgee

a very beautiful Bird
seen in flocks sometimes
as many as 3 or 400 together
often frequented this Bird
on the edge of a bog and
feeding at it seemed to me
in the mud and several
Birds perched on their
bills full of sand & dirt

Always keeping company
and feeding with the
Sulphur Crested Cockatoo

very plentiful in the
neighbourhood of Lake
Poga but only seldom
seen with beyond it

very rare

CATALOGUE OF THE MUSEUM OF

Museum Number.	Name of Specimen.	Description of the Specimen.	Number of Specimens.
741	Brown Heron		1
742	Rose breasted Cockatoo		1
743	Beaver Rat	y	1
744	Leadbeater's Cockatoo	y	1
745	do do	f	1
746	do do	gf	1
747	do do	ye	1
748	Rose breasted Cockatoo		1
749	Blue faced Honeyeater		1
750	Native Companion		1
751	Haukinn little thick shell		24
752	Tugabuck		1
753	Haremsnau long shell		25
754	Palludina with Operculum		50
List No VIII from Mondellunio April 30 th 1857.			
755	White Crane		1
756	Turtle Heron kill	y	1
757	Thin checked Waller Bird		1
758	eddaive sleeping Lizard		1
759	Torsoise, Pamelang W		1
760	Crested Pigeon		1

NATURAL HISTORY OF VICTORIA.

Locality whence obtained.

Donor's Name.

Remarks.

Nightman road of
the Murray River

This fine *Casuarina* is
numerous here and often
conspicuous in large
groves round the fine
~~the~~ Billabong etc of
the alluvium. —
It is also very often
found singly on the
banks of the Cypress
line

from the Murray
River

it was found very
difficult to obtain any
is more plentiful near
Ororo Station

CATALOGUE OF THE MUSEUM OF

Museum Number.	Name of Specimen.	Description of the Specimen.	Number of Specimens.
761	Yellow ringed Parrot <i>♂</i>		1
762	White cheeked Wattle Bird <i>♂</i>		1
763	White ground Sunbird		1
764	Black Robin <i>♀</i>		1
765	Yellow ringed Parrot <i>♀</i>		1
766	Red rumped Parrot <i>♂</i>		1
767	Grass parakeet <i>♀</i>		1
768	Red eared Robin <i>♂</i>	Exchanged - See out book, p. 21.	1
769	do <i>♂</i>		1
770	Adelaine Parrot <i>♀</i>		1
771	do <i>♂</i>		1
772	Yellow ringed Parrot <i>♀</i>		1
773	do		1
774	Crested Pigeon		1
775	do		1
776	banded red tailed Cockatoo		1
777	Red tailed Black do		1
778	Crested Oriole <i>♀</i>		1
779	Rufous rumped Lark		1
780	Little spotted Oriole <i>♂</i>		1

NATURAL HISTORY OF VICTORIA.

Locality whence obtained.

Donor's Name.

Remarks.

Single Birds and
nest with in the ~~stalled~~
scrub.

nest offered with on
the River Banks where
this Bird comes for water

CATALOGUE OF THE MUSEUM OF

Museum Number.	Name of Specimen.	Description of the Specimen.	Number of Specimens.
781	White checked Honeyeater	♂	1
782	Red numbered Parrot	♂	1
783	Rufous numbered Lark	♂	1
784	Yellow ringed Parrot	♂	1
785	House Kestrel		1
786	Lenango House	♀	1
787	Kestrel House	♀	1
788	Yellow ringed Parrot		1
789	Yellow ringed Parrot		1
790	Lenango		1
791	White numbered Wood Swallow		1
792	do do	♀	1
793	do do	♀	1
794	do do	♂	1
795	do do	♀	1
796	do do	♀	1
797	do do	♂	1
798	do do	♂	1
799	Pit Snake		1
800	Summer Bird		1

NATURAL HISTORY OF VICTORIA.

Locality whence obtained.

Donor's Name.

Remarks.

Common kind on
the Murray

Is very seldom found in
gold sludge

Sandy places.
↓

~~at~~
The Murray
Terns

CATALOGUE OF THE MUSEUM OF

Museum Number.	Name of Specimen.	Description of the Specimen.	Number of Specimens.
801	Brown Capd Pomatorhinus		1
802	Common Wood Swallow		1
803	do do ♀		1
804	Whiterumped do ♂	Exchanged: see out book, p. 21.	1
805	House Kestrel ♀		1
806	Whiterumped Wood Swallow ♀		1
807	do do ♀		1
808	Common Wood Swallow		1
809	Brown Capd Pomatorhinus		1
810	Whiterumped Wood Swallow ♀		1
811	do do		1
812	Common Wood Swallow ♂		1
813	do do ♀		1
814	Whiterumped do ♂		1
815	do do ♀		1
816	House Kestrel ♂		1
817	Lanang Mouse		1
818	do do		1
819	do ♀		1
820	do ♀		1

NATURAL HISTORY OF VICTORIA.

Locality whence obtained.

Donor's Name.

Remarks.

Murray Is. Is.

*The woman and children
went for their chips
and dig them out of
the sand.*

CATALOGUE OF THE MUSEUM OF

Museum Number.	Name of Specimen.	Description of the Specimen.	Number of Specimens.
121	Lanugo moulted		1
122	do		1
123	do	sk	1
124	do	sk	1
125	do	sk	1
126	do	sk	1
127	do	sk	1
128	White eye brow'd Wood Swallow	sk	1
129	do do do	sk	1
130	do do do	sk	1
131	do do do	sk	1
132	Crested Oriole		1
133	Red cap'd Robin	sk	1
134	Yellow ring'd Parrot	sk	1
135	White rump'd Wood Swallow		1
136	Grassparrot		1
137	Yellow ring'd Parrot	sk	1
138	Summer Bird	sk	1
139	Cuckoo	sk	1
140	Brown cap'd Comptosius		1

NATURAL HISTORY OF VICTORIA.

Locality whence obtained.

Donor's Name.

Remarks.

Murray
Scrubb

CATALOGUE OF THE MUSEUM OF

Museum Number.	Name of Specimen.	Description of the Specimen.	Number of Specimens.
141	Brown Capd Pomathornis	sk	1
142	Waler do	sk?	1
143	Spencer Bird	blackthroat	1
144	Shoed Power Bird		1
145	Burser Bird	sk	1
146	Black Magpie	y	1
147	Kangaroo Rat	Tunnell's	1
148	Mauve Mouse	Tramitrammit ^{sk}	1
149	Mauve Rat	Tunikin's	1
150	Mauve Mouse	Tramtramit's	1
151	Little Anis	Kangere	50
152	Little Mouse	Skullion	1
153	Mauve Mouse	Tramtramit	1
154	Kangaroo Rat	Pasuck ^{sk}	1
155	Large striped	Lizard	1
156	Red capd	Robin sk	1
157	do	do sk	1
158	do	do Skullion ^{sk}	1
159	Mauve Mouse	Tramtramit	1
160	Little Mouse	Kalper's sk	1

NATURAL HISTORY OF VICTORIA.

Locality whence obtained.

Donor's Name.

Remarks.

Murray
J. G.
Glenelg

Times seen at New Limestone

a beautiful little mouse
with very soft fur the head
was unlike that of a fox

Tree Rat with very long
tail brush at the end
climbs very well and is
as active as a squirrel

J. Laguerre's

This little Gerboa it is now
known in its habits and
as it is squabbling during
the day hours in the thick
salt bush scrub it is
often startled by the sheep
men and will never be seen
when it before it moves off

CATALOGUE OF THE MUSEUM OF

Museum Number.	Name of Specimen.	Description of the Specimen.	Number of Specimens.
861	Snake skin Vanuatu		1
862	Blame Rat Fuzikin f		1
863	Brown throated Pachycephalus		1
864	Pandicoot Fuzikin M		1
865	do do M		1
866	Blame Rat Fuzikin f		1
867	do do f		1
868	Pandicoot Fuzikin M		1
869	Crimson bellied Parrot M		1
870	Rat Fuzikin f Skulls		1
871	Snake Kullyne		1
872	Black tailed Parrot f		1
873	Crimson bellied Parrot ^{Sk} M		1
874	do do M		1
875	Little Mouse Kalsud ^{Sk}		1
876	do do "		1
877	do do "		1
878	Black tailed Parrot f		1
879	Larynx Univ 844 I		84
880	Black tailed Parrot M		1

NATURAL HISTORY OF VICTORIA.

Locality whence obtained.

Donor's Name.

Remarks.

Murray Scrub

a nocturnal animal living in hollow logs and running very quiete during the day

This beautiful Perrotta is not often found near the river banks and occupies the densest eucalypt scrub during the day.

On the Darling there exists a shell of species

This shell is taken 40 or 50 miles into the Murray Scrub as a substitute for water and this account for the fragments of shells found in such a locality

CATALOGUE OF THE MUSEUM OF

Museum Number.	Name of Specimen.	Description of the Specimen.	Number of Specimens.
181	Black tailed Parrot	f	1
182	Ras Tiliikin	f	1
183	Black tailed Parrot		1
184	do do	yellow	1
185	Brown throated Tachyphaps		1
186	Black tailed Parrot	yellow	1
187	Ras Tiliikin	sk	1
188	Black tailed Parrot	sk	1
189	Mallee Ground Finch	sk	1
190	Spotted Owl	sk	1
191	Crimson bellied Grass Parrot	f	1
192	do do	sk	1
193	Mallee Ground Finch		1
194	Black tailed Parrot	sk Exchanged - See out book, p. 21	1
195	Swain's Skink	brown throated	1
196	Crimson bellied Parrot	sk	1
197	Abelaide Parrot	sk	1
198	Fish Hawk	6 sk	6
199	Black tailed Parrot	sk	1
200	do do	sk	1

NATURAL HISTORY OF VICTORIA.

Locality whence obtained.

Donor's Name.

Remarks.

Elmory Scrubs

very large specimen

found in the waters
of
the Elmorye Darling

found in hollow trees and
very often in the deserted
Holes of the elms conical
or Holes of the natives

This fish is collected by
the natives

CATALOGUE OF THE MUSEUM OF

Museum Number.	Name of Specimen.	Description of the Specimen.	Number of Specimens.
201	Black tailed Parrot Sk f		1
202	Adelaide do f		1
203	do do		1
204	Yellow ringed Parrot Sk		1
205	Black tailed Parrot f	Exchanged. See out book, p. 21.	1
206	Yellow ringed Parrot Sk		1
207	Adelaide Parrot M Sk		1
208	Yellow ringed do Skeleton		1
209	Black tailed Parrot M		1
210	do do M		1
211	Yellow ringed Parrot Sk f		1
212	Brown winged Goshawk Sk		1
213	Yellow ringed Parrot M		1
214	Black tailed Parrot M		1
215	do do M		1
216	do do f		1
217	do do f		1
218	do do f		1
219	do do		1
220	Yellow ringed Parrot M		1

NATURAL HISTORY OF VICTORIA.

Locality whence obtained.

Donor's Name.

Remarks.

Albany Isabella

111.

CATALOGUE OF THE MUSEUM OF

Museum Number.	Name of Specimen.	Description of the Specimen.	Number of Specimens
221	Fish Mallespit		18
222	Adelaine Parrott etc		1
223	Yellow winged " etc		1
224	Rat Tiliquin etc		1
225	Yellow winged Parrott f		1
226	do do Skeleton		1
227	Black tailed Parrott "		1
228	Adelaine Parrott f		1
229	Crested Pigeon etc		1
230	yellow winged Parrott etc		1
231	Sallys Colluvicindou f		1
232	Crested Pigeon etc		1
233	Manu Rat Tiliquin etc		1
234	Skate of a Snake		1
235	Spotted Power Bird f		1
236	Crested Pigeon f		1
237	Summer Bird etc		1
238	Fish Tervin 3 etc		3
239	Little Sparrow Hawk f		1
240	Unio Manger 30 etc I		30.

NATURAL HISTORY OF VICTORIA.

Locality whence obtained.

Donor's Name.

Remarks.

Waters of the
Billebongs

Plentiful on the
Darling

Murray Scrubs

This beautiful Bird was
first shot near the banks
of the Murray by day and
is abundant all along the M.

Murray River
but rare

Murray River

CATALOGUE OF THE MUSEUM OF

Museum Number.	Name of Specimen.	Description of the Specimen.	Number of Specimens.
241	Wing Nanger 50 1/2 T		50
242	Little Wiv 42 T		42
243	do do 50 T		50
244	do do 50 T		50
245	Bushbird y		1
246	Brown ead Pomatonius		1
247	How Power y		1
248	Pinnikin sk		1
249	do f		1
250	Brown throated Pary cyprian sk		1
251	do f		1
252	yellow ringed Parrot sk		1
253	Pinnikin Skelton		1
254	White checked Honeyeater sk		1
255	do do		1
256	Rufous rumped Lark sk		1
257	Summerbird y		1
258	Tillys Colmaniana f		1
259	Crested Oriole sk		1
260	Malice ground Thrush sk		1

NATURAL HISTORY OF VICTORIA.

Locality whence obtained.

Donor's Name.

Remarks.

Murray River

Murray
Scrub

CATALOGUE OF THE MUSEUM OF

Museum Number.	Name of Specimen.	Description of the Specimen.	Number of Specimens.
261	Ras Tiliuin Skull and		1
262	do do	sk	1
263	Crested Pigeon	sk	1
264	Pandicoot Peruvian Sk		1
265	Yellow winged Parrot Sk		1
266	Kangaroo Ras Surass	sk	1
267	Cinnamon bellied Parrot	sk	1
268	White eye broad Wood Swallow		1
269	Carpet Snake (Boa)		1
270	Yellow winged Parrot	sk	1
271	do do	sk	1
272	do do		1
273	do do	sk	1
274	Crested Pigeon f		1
275	Magpie Lark		1
276	Little black throated	sumnerian	1
277	Brown capd Pouter	sk	1
278	Fish Aolun 1.		1
279	Maui Ras Tiliuin		1
280	Fish Parus y	4	4.

NATURAL HISTORY OF VICTORIA.

Locality whence obtained.

Donor's Name.

Remarks.

Murray Scrubs

on the lower Murray
fences on Roads
and fences

abundant near the
River Banks and
Lagoons

River Murray

River Murray

CATALOGUE OF THE MUSEUM OF

Museum Number.	Name of Specimen.	Description of the Specimen.	Number of Specimens.
281	Fish Pate 1.		1
282	" Silk 2.		2
283	Emu Eggs		1
284	do do		1
285	Turkey Egg		1
286	Wash Misso 5. Eudym 4. 1181		5
287	do do 1. 1182		1
288	Sweet water Sponges ^{Reedy} Lake		1
289	Two Shells of Lake Boga		1
290	Unio (Pissini) & Rudy Lake		200
291	Palludina F Murray R		133
292	do with operculum		167
293	Tillakere ^{univalve with operculum and young ones}		1100.
294	Patch bivalve Murray R		1500
295	Lymnaea C univalve ^{Lake Boga}		180
296	Physa B		20
297	Laccinea A		50
298	Univalve D		50
299	Striped Lizard		1
1000	Little Mouse		1

NATURAL HISTORY OF VICTORIA.

Locality whence obtained.

Donor's Name.

Remarks.

Murray River

Thelms Esq Murrumbidgee

do do

Miss Fletcher Darling R.

Rudy Lake

Lake Boga

Rudy Lake

Murray River

Met with in large quantities on the low ground after the water has evaporated.

CATALOGUE OF THE MUSEUM OF

Museum Number.	Name of Specimen.	Description of the Specimen.	Number of Specimens.
<u>List of birds from Woodliff near junction of Darling & Murray May 1857</u>			
1301	Yellow winged Parrot <i>y</i>		1
1302	Selby. Colluricincla		1
1303	Adelaida Parrot		1
1304	White chequed Honeyeater <i>y</i>		1
1305	Brown capd Pomathornis		1
1306	Crested Oriole		1
1307	Chestnut backed Thrush [#] <i>M</i>		1
1308	Crested Oriole [#] <i>M</i>		1
1309	Black tailed Gattaca <i>M</i>		1
1310	Crimson bellied Parrot		1
1311	do do do	Exchanged - See out-book, p. 21	1
1312	Brown capd Pomathornis	— do ————— do —————	1
1313	Pinnikin <i>M</i>		1
1314	Red capd Robin <i>M</i>		1
1315	do do <i>M</i>		1
1316	Chestnut backed Thrush		1
1317	Red throated Pterycephala		1
1318	Brown capd Pomathornis		1
1319	Crimson bellied Parrot		1
1320	do do do		1

NATURAL HISTORY OF VICTORIA.

Locality whence obtained.

Donor's Name.

Remarks.

Murray Scrub

CATALOGUE OF THE MUSEUM OF

Museum Number.	Name of Specimen.	Description of the Specimen.	Number of Specimens.
1321	Crimson bellied Parakeet sk		1
1322	do do do sk		1
1323	do do do sk		1
1324	Crested Cockatoo f		1
1325	Crested Pigeon f		1
1326	Pominy Kangaroo Rat		1
1327	Tillikin sk		1
1328	Selby's Colluricincla f		1
1329	Black tailed Parrot sk		1
1330	Black throated grey h. Honey ⁺ warbler	Exchanged. see outbook p. 21.	1
1331	Pinnikin f		1
1332	Black Fantail Flycatcher sk		1
1333	Perametes nasuta sk		1
1334	Crested Pigeon f		1
1335	Perametes furios f		1
1336	identical with 1030 sk		1
1337	Ramm Ramm Murre sk		1
1338	Red throated Pachycephala		1
1339	Selby's Colluricincla sk		1
1340	Red Cape Robin sk.		1

NATURAL HISTORY OF VICTORIA.

Locality whence obtained.

Donor's Name.

Remarks.

Murray Scrub

*This little green warbler
in the ground a large
number of it being together
and their burrows are not
unlike Rabbit warrens*

*This beautiful little
bird becomes very familiar
with man and always
makes its nest near habitation*

CATALOGUE OF THE MUSEUM OF

Museum Number.	Name of Specimen.	Description of the Specimen.	Number of Specimens.
1341	Shoed Owl	♂	1
1342	Crested Cockatoo	♂	1
1343	do do	♂	1
1344	Tiukin	♂	1
1345	Parakeet Green		1
1346	Laceped Honeyeater	♂	1
1347	do do	♂	1
1348	Loanoor Leipoa	♀	1
1349	Tiukin	♂	1
1350	Chessnut backed Thrush	♂	1
1351	Tiukin	♂	1
1352	Kahlbere little Halcyon		1
1353	Crimson bellied Parakeet		1
1354	do do	♂	1
1355	Tiukin	♂	1
1356	Crimson bellied Parakeet	♂	1
1357	Ramm Ramm House	♂	1
1358	Summer bird Skeleton		1
1359	Crimson bellied Parakeet	♂	1
1360	Little Mallee Quana	♂	1

NATURAL HISTORY OF VICTORIA.

Locality whence obtained.

Donor's Name.

Remarks.

does not appear
to exist at Ludlow
Ponds.

Wattle Scrub
and in the
Box ferns near
the Banks of
the River along

this handsome Parrakeet is
not so plentiful as the
other species and is usually
met with in the thick
Wattle Scrub and Pine Scrub
~~the~~ of the Shalby

CATALOGUE OF THE MUSEUM OF

Museum Number.	Name of Specimen.	Description of the Specimen.	Number of Specimens.
1361	Crimson bellied Parrot		1
1362	do do	♂	1
1363	Red robin	♂	1
1364	Perametes nasuta	♂	1
1365	Yellow breasted Parrot		1
1366	Hapalotus albipes		1
1367	Yellow breasted Cuckoo	♂	1
1368	Tilikin	♂	1
1369	Crimson bellied Parakeet	♂	1
1370	Chestnut backed Thrush	♂	1
1371	Crimson bellied Parakeet	♂	1
1372	do do	♂	1
1373	Perametes nasuta	♂	1
1374	Crimson bellied Parakeet	♂	1
1375	Crimson bellied Parakeet		1
1376	Pandaicoot	♂	1
1377	Crimson bellied Parakeet	♂	1
1378	Perametes nasuta	♂	1
1379	do do		1
1380	Pandaicoot	♂	1

NATURAL HISTORY OF VICTORIA.

Locality whence obtained.

Donor's Name.

Remarks.

Walter Scrub

*This fine Bird is a swift runner
and prefers the tall Bush
and other plains of the
allied.*

CATALOGUE OF THE MUSEUM OF

Museum Number.	Name of Specimen.	Description of the Specimen.	Number of Specimens.
1381	Pandicoot	ell	1
		ell	
1382	Silver backed Russetbird		1
1383	Pirikin	ell	1
1384	Redthroated Pachycephala		1
1385	Shrike Tit	ell	1
1386	Pandicoot		1
1387	Merlin	ell	1
1388	Honeyeater idens ¹¹¹⁴		1
1389	Pandithis head		1
1390	Pandicoot		1
1391	White winged Chough	ell	1
1392	Ramm Ramm Mouse	ell	1
1393	Kahlens little Lapulatus	ell	1
1394	do do	ell	1
1395	do do	ell	1
1396	Paderelen		1
1397	Kahlens		1
1398	Pirikin	ell	1
1399	Sally Colurinda	ell	1
1400	Red throated Pachycephala		1

NATURAL HISTORY OF VICTORIA.

Locality whence obtained.

Donor's Name.

Remarks.

a very shy bird not
easily to be approached

this fine, singing bird
is also very shy and not
at all scarce in any part
of the cleared scrub.

Mallee Scrub

CATALOGUE OF THE MUSEUM OF

Museum Number.	Name of Specimen.	Description of the Specimen.	Number of Specimens.
1401	Boa Snake		1
1402	Honeyeater from Lake Poye		1
1403	Red Robin	all	1
1404	Silver backed Pouterbird		1
1405	Spotted Power bird	all	1
1406	Brown eyed Crow	all	1
1407	Crested Oriole	♂	1
1408	Pachycephala	♂	1
1409	do	all	1
1410	Varied Graculus	♂	1
1411	Toucan	all	1
1412	do	♂	1
1413	Mallet Scrub bird	♂	1
1414	Honeyeater	above and below bill wide to the eye. all.	1
1415	Perametes sumis	♂	1
1416	Haplois albipes	♂	1
1417	do do	♂	1
1418	do do	♂	1
1419	Spotted Power Bird	sk	1
1420	Yellow ringed Parrot	sk	1

NATURAL HISTORY OF VICTORIA.

Locality whence obtained.

Donor's Name.

Remarks.

*this snake though
frequently handled
never attempted to
bite. —*

Maui Scrub

CATALOGUE OF THE MUSEUM OF

Museum Number.	Name of Specimen.	Description of the Specimen.	Number of Specimens.
1421	Frogg		1
1422	Fish Silk D		1
1423	Fish Parrot J		1
1424	do do		1
1425	Peaceful Ground Dove u		1
1426	do do f		1
1427	Black tailed Parrot u		1
1428	Chestnut backed Thrush u		1
1429	Lanceolated Honeyeater		1
1430	White Tit f		1
1431	Selys Colluricincla y		1
1432	Merrin. Padumelen yf		1
1433	Selys Colluricincla u		1
1434	Chestnut backed Thrush f		1
1435	Crested Oriole u		1
1436	Black backed Magpie f		1
1437	do do u		1
1438	Honeyeater idensis 1114		1
1439	Yellow rumped Parrot f		1
1440	Selys Colluricincla f		1

NATURAL HISTORY OF VICTORIA.

Locality whence obtained.

Donor's Name.

Remarks.

Murray River
and adjoining
Lagoons

The Darling appears
to be their strong
hold

all over Tenass

CATALOGUE OF THE MUSEUM OF

Museum Number.	Name of Specimen.	Description of the Specimen.	Number of Specimens.
1441	Black tailed Parrot	♂	1
1442	Merrin	♀	1
1443	Turrass	♂	1
1444	Merrin	♀	1
1445	Fish Gatorn		1
1446	Pillikin	♂	1
1447	do	♂	1
1448	Shrike Tit	♂	1
1449	do	♂	1
1450	Merrin	♂	1
1451	Turrass	♂	1
1452	Pirikin	♀	1
1453	Banded Prameles		1
1454	Prameles nasuta		1
1455	do do		1
1456	do do		1
1457	Robin Ground	♂	1
1458	Turboa Kangaroo	♂	1
1459	do do	♂	1
1460	do do		1

NATURAL HISTORY OF VICTORIA.

Locality whence obtained.

Donor's Name.

Remarks.

Murray River

Mallee Scrub

very tiny little animals
who will make long
burrows and remove an
incredible amount of
sand to the surface
during the night

CATALOGUE OF THE MUSEUM OF

Museum Number.	Name of Specimen.	Description of the Specimen.	Number of Specimens.
1461	Fish Mallapit P		17
1462	do Serrin K		10
1463	do Paltk N		2
1464	do Kohn I		5
1465	do Uurank F		2
1466	do Serrin K		4
1467	do Korrrein R		1
1468	do Mallapit P		6
1469	do Kohn dere O		8
1470	do Korrrein R		2
1471	do Uurank F		4
1472	Earth from the Mallee &c		1
1473	Trilobite from Griffiths Island		1
1474	Fox Korrrein R		5
1475	do Mallapit P		8
1476	do Kohn I		6
1477	do Paltk N		2
1478	do Uurank F		5
1479	Crossed Crozier cu		1
1480	do do		1

NATURAL HISTORY OF VICTORIA.

Locality whence obtained.

Donor's Name.

Remarks.

Murray River
and
its Lagoons

20 miles west of
Ivan Hill

Griffiths island

Presented by Lieut
Dance R.N.

Found at Griffiths Island
July 1857. during a voyage
in search of Sir John Franklin

Murray River
and its
Lagoons

CATALOGUE OF THE MUSEUM OF

Museum Number.	Name of Specimen.	Description of the Specimen.	Number of Specimens.
1481	Crossed Oriole		1
1482	Tilly's Collared Tanager		1
1483	Crossed Oriole		1
1484	Thrush Tit	sk	1
1485	Common Bat		1
1486	do Quail	sk	1
1487	do Grassparrot	f	1
1488	do do	sk Exchanged - See out book p. 21.	1
1489	Chestnut backed Thrush		1
1490	Brown headed Pouter	sk	1
1491	Tilly's Collared Tanager		1
1492	Bonin	f	1
1493	Merrin (very large)	sk	1
1494	Crossed Pigeon	sk	1
1495	Longwing Tanager	sk	1
1496	Crossed Pigeon		1
1497	do do		1
1498	do do		1
1499	do do		1
1500	Tullikin		1

NATURAL HISTORY OF VICTORIA.

Locality whence obtained.

Donor's Name.

Remarks.

Mallee
Scrubb

disposed to procure the
occupy a hollow branch
during the day time
and fly out after
nightfall. —

very quiet

Always found near the
river making the usual
familiar noise with
its curious noisy notes. —

This handsome bird
is to be found in large
flocks in the scrubby
low forest preferring
dry trees and branches
for perching on. —
I have found this species
at times very shy indeed
so that I could not approach
within gun shot
whenever they might be
thrown at with success without
taking run or refuge in
other parts of the scrub. —

CATALOGUE OF THE MUSEUM OF

Museum Number.	Name of Specimen.	Description of the Specimen.	Number of Specimens.
<u>List of Specimens June 30th 1857</u>			
1301	Pillikin	sk	1
1302	Merrin	f	1
1303	Pillikin	f	1
1304	Pillikin Skeleton		1
1305	Merrin	gall	1
1306	Pirritkin	f	1
1307	Pastuck	sk	1
1308	Kestree	sk	1
1309	Pastuck	f	1
1310	do	f	1
1311	Pillikin	sk	1
1312	do	f	1
1313	do	f	1
1314	do	f	1
1315	do	f	1
1316	do	sk	1
1317	do	f	1
1318	do	sk	1
1319	do	f	1
1320	do	sk	1

NATURAL HISTORY OF VICTORIA.

Locality whence obtained.

Donor's Name.

Remarks.

Malles Scrub

*a very fecundous little
animal the larva of
Coccatous and other birds
when it surprises when
passing during the night*

CATALOGUE OF THE MUSEUM OF

Museum Number.	Name of Specimen.	Description of the Specimen.	Number of Specimens.
1321	<i>Oulet Nightjar</i>		1
1322	<i>White Tip tailed Petrel</i>	<i>f</i>	1
1323	<i>Perrikin</i>	<i>ell</i>	1
1324	<i>do</i>	<i>ell</i>	1
1325	<i>Kultarr</i>		1
1326	<i>Pillikin</i>	<i>ell</i>	1
1327	<i>do</i>	<i>ell</i>	1
1328	<i>do</i>	<i>f</i>	1
1329	<i>do</i>	<i>ell</i>	1
1330	<i>Little undulated Sparrow Hawk</i>	<i>f</i>	1
1331	<i>Tumral Cockatoo</i>		1
1332	<i>Black tailed Walla Parrot</i>	<i>ell</i>	1
1333	<i>do do</i>	<i>f</i>	1
1334	<i>Yellow winged Parrot</i>	<i>f</i>	1
1335	<i>do do</i>		1
1336	<i>Pillikin</i>	<i>f</i>	1
1337	<i>Kangaroo Tumbucun</i>	<i>ell</i>	1
1338	<i>Yellow winged Parrot</i>	<i>f</i>	1
1339	<i>do do</i>	<i>ell</i>	1
1340	<i>do do</i>	<i>ell</i>	1

NATURAL HISTORY OF VICTORIA.

Locality whence obtained.

Donor's Name.

Remarks.

only one specimen of this handsome grebe was secured.

this handsome Ptarmigan is very rare indeed only a few specimens were procured by the natives

• Mallee Scrub

This beautiful Quail appears now and then in flocks from the Sandstone on the River. It has a loud screeching voice and is easily recognized by it

CATALOGUE OF THE MUSEUM OF

Museum Number.	Name of Specimen.	Description of the Specimen.	Number of Specimens.
1341	<i>Pinnikin</i>	<i>ell</i>	1
1342	<i>Tiukin</i>	<i>f</i>	1
1343	<i>do</i>	<i>f</i>	1
1344	<i>do</i>		1
1345	<i>Booming</i>	<i>f</i>	1
1346	<i>Fronted Thrush Tit</i>	<i>ell</i>	1
1347	<i>Booming</i>	<i>f</i>	1
1348	<i>do</i>	<i>f</i>	1
1349	<i>do</i>	<i>f</i>	1
1350	<i>do</i>	<i>ell</i>	1
1351	<i>Loan</i>	-	1
1352	<i>Owllet Nightjar</i>	<i>f</i>	1
1353	<i>Crested Oriole</i>	<i>yellow</i>	1
1354	<i>Many colored Parakeet</i>		1
1355	<i>do do</i>	<i>ell</i>	1
1356	<i>do do</i>	<i>ell</i>	1
1357	<i>Tiukin</i>	<i>ell</i>	1
1358	<i>do</i>	<i>ell</i>	1
1359	<i>do</i>	<i>ell</i>	1
1360	<i>do</i>	<i>ell</i>	1

144
NATURAL HISTORY OF VICTORIA.

Locality whence obtained.

Donor's Name.

Remarks.

*ellipes
Scrub*

CATALOGUE OF THE MUSEUM OF

Museum Number.	Name of Specimen.	Description of the Specimen.	Number of Specimens.
1361	Tiukin	♂	1
1362	do	♂	1
1363	Pastucka	♂	1
1364	Tiukin	♂	1
1365	Many colored Parrakeet	♂	1
1366	do do	♂	1
1367	Tiukin	♂	1
1368	do	♂	1
1369	Perikin	♂	1
1370	Tiukin	♂	1
1371	do	♂	1
1372	Singing Honeyeater	♂	1
1373	Many colored Parrakeet	♂	1
1374	Red numped Grassparakeet	♂	1
1375	do do	♂	1
1376	Merrin	♂	1
1377	Crested Mallee Scrub Bird	♂	1
1378	Blackturnall crested Wattle do		1
1379	Tiukin Skuas		1
1380	do do		1

NATURAL HISTORY OF VICTORIA.

Locality whence obtained.

Donor's Name.

Remarks.

Maui Scrubs

*The first bird of this
species observed was at
Mount Hope*

CATALOGUE OF THE MUSEUM OF

Museum Number.	Name of Specimen.	Description of the Specimen.	Number of Specimens.
1381	Tillikin Skulleson		1
1382	Fronsd Thrive Pit	all	1
1383	Tillikin	all	1
1384	Many colored Parakeet	all	1
1385	do do	f	1
1386	Tillikin	f	1
1387	Moncat	all	1
1388	Tillikin	f	1
1389	do	all	1
1390	Selby's Colluricincla	f Exchanged - See next book, p. 21.	1
1391	Kunung		1
1392	Merrin	all	1
1393	do	all	1
1394	Tillikin	f	1
1395	do	all	1
1396	do	f	1
1397	do	all.	1
1398	do	f	1
1399	do	all	1
1300	Spotted Bower Bird	f	1

NATURAL HISTORY OF VICTORIA.

Locality whence obtained.

Donor's Name.

Remarks.

This *Ulla Pirumella* is often met with in the scrub running swiftly along the ground. I saw it first at the Sandy Hills near the sea front.

Madu Scrub

CATALOGUE OF THE MUSEUM OF

Museum Number.	Name of Specimen.	Description of the Specimen.	Number of Specimens.
1801	Spotted Plover Bird	f	1
1802	Sliding Lizard		1
1803	Pirritin	ch	1
1804	Humany Skeleton		1
1805	do		1
1806	Pirritin	ch	1
1807	Palluck Skeleton		1
1808	Turratt	ch	1
1809	Palluck		1
1810	Tillikin Skeleton		1
1811	Red capd Robin	ch	1
1812	Merrin	f	1
1813	Many colored Parakeet	ch	1
1814	do do	ch	1
1815	Pirritin	f	1
1816	do	f	1
1817	Tillikin	ch	1
1818	Pirritin	f	1
1819	do	f	1
1820	Tillikin		1

NATURAL HISTORY OF VICTORIA.

Locality whence obtained.

Donor's Name.

Remarks.

much hair kangaroo and
of the swiftest of all the
kangaroo tribes seen during
about with a velocity hardly
as seen in any. It doubtless had
the name of

Malles Scrub

CATALOGUE OF THE MUSEUM OF

Museum Number.	Name of Specimen.	Description of the Specimen.	Number of Specimens.
1321	Tillikin	♂	1
1322	Pirrikin	♀	1
1323	Tillikin	♂	1
1324	do	♂	1
1325	Palluck	♂	1
1326	Tillikin		1
1327	Temponel Comathorinus		1
1328	Peaceful Ground dove		1
1329	Pirrikin	♀	1
1330	Black Capd Lilella	♂	1
1331	Miroca		1
1332	Kumany		1
1333	do		1
1334	Pidoroka		1
1335	Kumany		1
1336	do		1
1337	Pidoroka		1
1338	Saxum backed Kingfisher	♂	1
1339	Chestnut Shouldered Tattler	♂	1
1340	Black leaved Robin	♂	1

NATURAL HISTORY OF VICTORIA.

Locality whence obtained.

Donor's Name.

Remarks.

Melaleuca

153.

CATALOGUE OF THE MUSEUM OF

Museum Number.	Name of Specimen.	Description of the Specimen.	Number of Specimens.
1341	Transtrammitt	sk	1
1342	Sheldove Power Bird	Exchanged - See out book, p. 21.	1
1343	Crested Oriole		1
1344	do do		1
1345	Silly. Colluricincla	sk	1
1346	Black Backed Magpie	"	1
1347	Crimson bellied Parakeet	"	1
1348	Pacific Ground Dove	"	1
1349	Humming	"	1
1350	Pinnacled	"	1
1351	do	"	1
1352	Pinnacled	sk	1
1353	do	sk	1
1354	Gray Snow Thrush		1
1355	Varied Graculus		1
1356	Black throated do		1
1357	Black backed Magpie	sk	1
1358	Minor Graculus	sk	1
1359	Bull Opossum	sk	1
1360	do do	sk	1

NATURAL HISTORY OF VICTORIA.

Locality whence obtained.

Donor's Name.

Remarks.

Mallee Scrub

This species begins at the junction of the Darling and Murray very rare not to be got at the Murray

CATALOGUE OF THE MUSEUM OF

Museum Number.	Name of Specimen.	Description of the Specimen.	Number of Specimens.
1361	Rufous lined Cinclora umbellus		1
1362	Crested Oriole		1
1363	Miner		1
1364	Black backed Magpie		1
1365	Spotted Downy Woodpecker		1
1366	Tyrannulet		1
1367	Singing Honeycreeper		1
1368	Black fantailed Tyrannulet		1
1369	Varied Graculus		1
1370	Crested Pigeon		1
1371	Hummingbird		1
1372	do		1
1373	do		1
1374	Pardaliparus		1
1375	do		1
1376	Hummingbird		1
1377	Brown throated Tachycineta		1
1378	Banded thick knee		1
1379	Kestrel		1
1380	Brown Tree Creeper		1

NATURAL HISTORY OF VICTORIA.

Locality whence obtained.

Donor's Name.

Remarks.

Mallee Scrub

*Easily recognised by
their whitish bark*

*Common after clipp
bins etc the natives
believe it to be the
originator of veins*

CATALOGUE OF THE MUSEUM OF

Museum Number.	Name of Specimen.	Description of the Specimen.	Number of Specimens.
1381	Honeyeater	♂	1
1382	Merrin	♂	1
1383	Singing Honeyeater	♂	1
1384	do do	♂	1
1385	Crested Oriole	♂ Exchanged - See Out book. p. 21.	1
1386	Red Rumped Parakeet	♂	1
1387	Chestnut backed Ground Finch	♂	1
1388	Crested Oriole		1
1389	Yellow winged Parrot	♂	1
1390	Kunawng Skeleton		1
1391	Pastucke	do	1
1392	Pidonka		1
1393	do		1
1394	do		1
1395	do		1
1396	do		1
1397	Tram Traumit		1
1398	Pidonka		1
1399	Kunawng		1
1400	black backed magpie		1

NATURAL HISTORY OF VICTORIA.

Locality whence obtained.

Donor's Name.

Remarks.

*Mallee
Scrubs*

leaves and roots and grass

eu
abc

1

2

3

4

5

3

7

3

0

7

3

0

7

3

0

7

3

0

7

CATALOGUE OF THE MUSEUM OF

Museum Number.	Name of Specimen.	Description of the Specimen.	Number of Specimens
1401	Common Wood Swallow		1
1402	Brown eared Tamaritornis		1
1403	Thin checked Honeyeater ^{ell}		1
1404	Brown throated Pachycephala ^f		1
1405	do do do ^{ell}		1
1406	Black eared Robin ^{ell}	Exchanged - see Out book, p. 21.	1
1407	Brown Treecreeper ^f		1
1408	Singing Honeyeater ^f		1
1409	Ram Rammit ^{Sk}		1
1410	White eared Honeyeater ^{ell}		1
1411	Many colored Parakeet		1
1412	Varied Graculus		1
1413	Sillys Colluricincla ^f		1
1414	Pinniskin		1
1415	Sillys Colluricincla ^f		1
1416	White eared Honeyeater		1
1417	Merin		1
1418	Varied Graculus		1
1419	Rufous lined Anulorhamphus		1
1420	Bull Opossum ^{ell}		1

NATURAL HISTORY OF VICTORIA.

Locality whence obtained.

Donor's Name.

Remarks.

Wattle Scrubb.
and
the Banks of
the Murrumbidgee

This little Hummingbird
abundant near the river
it consumes a fruit more
which is generally fastened
to some drooping branch
of the Eucalypti and contains
generally 3 eggs of a flesh
color white darker spots on
the top

CATALOGUE OF THE MUSEUM OF

Museum Number.	Name of Specimen.	Description of the Specimen.	Number of Specimens
1421	Varied Graculus		1
1422	Brown throated Tachycineta		1
1423	Red throated do		1
1424	fine Parula Cuckoo	all Exchanged. See Out look, p. 21	1
1425	Leadbeaters Cockatoo		1
1426	Crossed Pigeon	all Exchanged. See Out-look, p. 21.	1
1427	do		1
1428	do		1
1429	Kullann		1
1430	Yellow ringed Parrot		1
1431	Bull opossum	all	1
1432	do	all	1
1433	Pinakin	all	1
1434	Sleeping Lizard		1
1435	Turrass		1
1436	Crimson bellied Parakeet	all	1
1437	Opossum		1
1438	Turrass		1
1439	Darling Rat		1
1440	Kangaroo		1

NATURAL HISTORY OF VICTORIA.

Locality whence obtained.

Donor's Name.

Remarks.

Stamens

~~...~~
During the month of September
this light is often heard during
the whole night.

During the rainy season wind
and frosts of water
in the channel. These rocks
never approach the River
Banks

very rarely met with
in other species which
form a dense underwood

CATALOGUE OF THE MUSEUM OF

Museum Number.	Name of Specimen.	Description of the Specimen.	Number of Specimens
1441	Sea Lizard		1
1442	Finch from ^{upper} lower Darling		1
1443	White tailed Darling Mouse		1
1444	Monkey <i>ell</i>		1
1445	Lark		1
1446	Miroca		1
1447	Singing Honeyeater		1
1448	Restless Flycatcher		1
1449	Lanceolated Honeyeater f		1
1450	do do		1
1451	do do		1
1452	Brown capd Pomathorinos f		1
1453	Spotted Power Bird		1
1454	Crested Oriole f		1
1455	Pirrikin f		1
1456	do f		1
1457	Kangaroo Cullucur <i>ell</i>		1
1458	Brown throated Pachysiphia f		1
1459	Honeyeater		1
1460	Red Rumped Parrakeet <i>ell</i>		1

NATURAL HISTORY OF VICTORIA.

Locality whence obtained.

Donor's Name.

Remarks.

Mount Murchison

Pensyfull hill only common
with *Grevillia robusta*

Unquestionable very rare

Mallee Scrub

This handsome kind
has a very pleasing note and
often whistles for hours together
perched on some dry branch
of a high tree.

CATALOGUE OF THE MUSEUM OF

Museum Number.	Name of Specimen.	Description of the Specimen.	Number of Specimens.
1461	Brown throated Pachycephala ^r		1
1462	do do ^{sk}		1
1463	Blue banded Grassparrot		1
1464	Black Fantail Flycatcher		1
1465	Brown throated Pachycephala ^r		1
1466	Selby's Graucalus		1
1467	White shafted Fantail		1
1468	Red rumped Parakeet ^{sk}		1
1469	do do ^f		1
1470	Selby's Colluricincla ^{sk}		1
1471	do do ^s		1
1472	Kumany ^{Skull}		1
1473	do ^s		1
1474	do ^s		1
1475	do ^s		1
1476	Brown Treecreeper ^s		1
1477	Kumany ^{Skull}		1
1478	do ^s		1
1479	Chested Oriole ^{sk?}		1
1480	Peaceful Ground dove		1

NATURAL HISTORY OF VICTORIA.

Locality whence obtained.

Donor's Name.

Remarks.

In the neighbourhood of
Grassy Billybong

Maude Scrub

CATALOGUE OF THE MUSEUM OF

Museum Number.	Name of Specimen.	Description of the Specimen.	Number of Specimens.
1481	Peaceful Ground dove f		1
1482	Bronze winged Pigeon f		1
1483	Singing Honeyeater f		1
1484	Striated Pardalote		1
1485	Spotted Power Bird f		1
1486	Laughing Jackass "		1
1487	Black Robin yem		1
1488	do f		1
1489	Brown throated ^{sk} Pachycephala		1
1490	Laughing Jackass f		1
1491	Crested Oriole	Exchanged - See Out book, p. 21.	1
1492	Rufous lined Cindorampus		1
1493	Spotted Power Bird		1
1494	Froned Shrike Tit sk		1
1495	Black Lingo. "Wanwarro" "Kau"		1
1496	Turratt f		1
1497	Pirrikin f		1
1498	Pirrikin sk		1
1499	Turratt sk		1
1500	Common Bittern		1

NATURAL HISTORY OF VICTORIA.

Locality whence obtained.

Donor's Name.

Remarks.

This beautiful little bird
is often met with in the
Scott Bush Scrub, it has
a quick flight and makes
at a distance not unlike
a parrotlet.
Some birds of the species
in particular seem to be
abundant with this bird on
account of its dark plumage
it is not easily detected
and often fly up right from
under the bill of the sportsman

Scott Bush Scrub

Beautiful note

rare

Lwamps

CATALOGUE OF THE MUSEUM OF

Museum Number.	Name of Specimen.	Description of the Specimen.	Number of Specimens.
1501	Common Pigeon	sk	1
1502	Pinnikin		1
1503	Selley's Colluricincla		1
1504	Fram Frammit		1
1505	do do		1
1506	do do	sk	1
1507	Kunnang		1
1508	Singing Honeyeater	& Exchanged - See Out book. p. 21.	1
1509	do do	&	1
1510	Tachycephala	sk	1
1511	Pronurocapa Tomatinus		1
1512	do do		1
1513	Blue banded Grassfinch	&	1
1514	Red rumped do	sk	1
1515	do do	sk	1
1516	Tillikin	&	1
1517	do	sk	1
1518	do	&	1
1519	Pinnikin Skelton		1
1520	Tillikin	&	1

NATURAL HISTORY OF VICTORIA.

187

Locality whence obtained.

Donor's Name.

Remarks.

Mallee Scrub

CATALOGUE OF THE MUSEUM OF

Museum Number.	Name of Specimen.	Description of the Specimen.	Number of Specimens.
1521	Pillikin	♂	1
1522	do	♂	1
1523	Yellow Crested Cuckoo		1
1524	do	♂	1
1525	Brown Cap Plover		1
1526	Brown Tree Creeper	♂	1
1527	Fronted Shrike Tit	♂	1
1528	do do	♂ Exchanged - see out book, p. 21.	1
1529	N. G. L. Puffin Bird		1
1530	Red Rumped Parakeet	♂	1
1531	Brown throated Pachycephalus		1
1532	Crested Oriole	♂	1
1533	Chestnut backed Ground Tit		1
1534	Chestnut shouldered Green Puffin?	♂	1
1535	Loon	♂	1
1536	Common Plover		1
1537	do do		1
1538	Palluck	♂	1
1539	Pinnikin	♂	1
1540	do	♂	1

NATURAL HISTORY OF VICTORIA.

Locality whence obtained.

Donor's Name.

Remarks.

Mallee Scrub

CATALOGUE OF THE MUSEUM OF

Museum Number.	Name of Specimen.	Description of the Specimen.	Number of Specimens.	
1541	Kulturn	♂	1	
1542	Pinnikin	♀	1	
1543	do	Skull	1	
1544	Common Pigeon		1	
1545	do	do	♂	1
1546	do	do	♂	1
1547	do	do	♂	1
1548	do	do	♀	1
1549	do	do		1
1550	Honeyeater	♀	1	
1551	Brown throated Pachycephala	♀	1	
1552	do	do	♀	1
1553	Black cap'd Lilia		1	
1554	Brown throated Pachycephala	♀	1	
1555	Brown winged Pigeon		1	
1556	Crested Cuckoo	♀	1	
1557	Common Pigeon	♀	1	
1558	do	do	♀	1
1559	do	do	♂	1
1560	Yellow winged Parrot	♂	1	

NATURAL HISTORY OF VICTORIA.

Locality whence obtained.

Donor's Name.

Remarks.

Lakes and Lagoons

This bird is very plentiful in some of the ^{needy} lakes of the neighbourhood of the ^{needy} murreal. It hides during the day ^{in the high grass}

Murray Scrub

This little bird is anything but scarce in some ^{of the} clatter scrub. It ^{prefers the} ^{of} ^{the} ^{branches} and runs along its branches with celerity.

Two ^{thousand} ^{of} ^{these} ^{birds} were collected on the Darling.

CATALOGUE OF THE MUSEUM OF

Museum Number.	Name of Specimen.	Description of the Specimen.	Number of Specimens.
1561	Black Sausail Flycatcher Brown throated Pachycephala		1
1562	Red capd Robin	Exchanged. See out book, p. 21.	1
1563	Sausail "Puccas" Sk		1
1564	Red capd Robin "		1
1565	Crested Pigeon ♀		1
1566	Blue Crane Sk		1
1567	Crested Pigeon ♀		1
1568	Temponal Pomatorhinus		1
1569	do do ♀		1
1570	do do ♀		1
1571	Crested Oriole. ♂		1
1572	Spotted Bower Bird ♂		1
1573	do do ♀		1
1574	Scrub Ground Bird		1
1575	Turrass ♀		1
1576	Booming yew		1
1577	Blue Crane		1
1578	Crested Pigeon ♂		1
1579	do ♀		1
1580	Spine crested Honeyeater		1

NATURAL HISTORY OF VICTORIA.

Locality whence obtained.

Donor's Name.

Remarks.

Murray Scrubs

This little Halimolobos resembles the latter very much in the color of the thorax and is very good to eat.

a common kind and all the lagoons along the Banks of the Murray

CATALOGUE OF THE MUSEUM OF

Museum Number.	Name of Specimen.	Description of the Specimen.	Number of Specimens.
1581	Common Plover	♂	1
1582	Brown throated Pachycephala	♂	1
1583	do do	♂	1
1584	Palluck		1
1585	Crossed Oriole		1
1586	Brown throated Pachycephala	sk	1
1587	Spurred Power Bird		1
1588	Pachycephala	♂	1
1589	Crossed Oriole	♂	1
1590	Epthianura	sk	1
1591	do	sk	1
1592	Sally's Colluricincla	sk	1
1593	Epthianura	sk	1
1594	Black Robin	sk	1
1595	Plover	♂	1
1596	Drum Drum Skuas		1
1597	Peaceful Ground dove	sk	1
1598	Crossed Oriole	sk	1
1599	Blue Crane	sk	1
1600	Turnall	sk	1

NATURAL HISTORY OF VICTORIA.

Locality whence obtained.

Donor's Name.

Remarks.

Murray Scrubs.

Common at the Darling River

CATALOGUE OF THE MUSEUM OF

Museum Number.	Name of Specimen.	Description of the Specimen.	Number of Specimens.
<i>List No. XI Mondullemur July 1857</i>			
1201	Brown throated Pachycephala		1
1202	Miner	all	1
1203	Miner	all	1
1204	do	all	1
1205	Blue tailed Grassparrot	f	1
1206	do do	f	1
1207	do do	all	1
1208	do do	all	1
1209	do do	f	1
1210	Chestnut backed Ground Thrush	all	1
1211	Spine tailed Honeyeater	all	1
1212	Black cap Robin	all	1
1213	Warren	all	1
1214	Lark Skutcheon		1
1215	^{throated} Yellow Miner		1
1216	Lark Skutcheon		1
1217	Katterie cat	f	1
1218	Brown cap Pomatorhinus	f	1
1219	do do		1
1220	Red naped Tanager	f	1

NATURAL HISTORY OF VICTORIA.

Locality whence obtained.

Donor's Name.

Remarks.

Murray Scrubs

this little marsupial animal
in habits the closely con forms
near the River several specimens
have been secured found among
the dead branches cut for firewood
it was quite with ears laid
back like other animals of the
same species.

Rare and apparently
only on the Darling

this marsupial little but also
falls down the ears in a
peculiar manner when
alive. When dead they appear
stiff and erect.

CATALOGUE OF THE MUSEUM OF

Museum Number.	Name of Specimen.	Description of the Specimen.	Number of Specimens.
1221	Red rumped Parrakeet	f	1
1222	do do	f	1
1223	Lanceolated Honeyeater		1
1224	Mallee Scrub Kangaroo	sk	1
1225	Red rumped Parrakeet	sk	1
1226	Warren	sk	1
1227	Ram. Ram		1
1228	Spurred winged Podargus	sk	1
1229	Black eared Titma	sk	1
1230	Temporal Pomatorhinus	f	1
1231	do do	-	1
1232	do do	f	1
1233	Lake Boga Honeyeater		1
1234	Forty spurred Finch		1
1235	Crested Pigeon	f	1
1236	do	sk	1
1237	Peaceful Ground dove	f	1
1238	Temporal Pomatorhinus	f	1
1239	Peaceful Ground dove	f	1
1240	Crested Pigeon	f	1

NATURAL HISTORY OF VICTORIA.

Locality whence obtained.

Donor's Name.

Remarks.

Murray Scuss

found 3 to 4 lines used to
keep together mainly round
the boxwood in search
of insects

CATALOGUE OF THE MUSEUM OF

Museum Number.	Name of Specimen.	Description of the Specimen.	Number of Specimens.
1241	Temporal Tomatherinus	sk	1
1242	Maggie Lark	sk	1
1243	Lancewood Honeyeater	f	1
1244	Turrass		1
1245	Spine eukid Honeyeater		1
1246	White winged Wren	f	1
1247	Turrass	sk	1
1248	White winged Wren	f?	1
1249	Crossed Pigeon	Skull of	1
1250	Booming	sk	1
1251	do	sk	1
1252	do	sk	1
1253	Ram Ram	sk	1
1254	Turrass	f	1
1255	Maine Compagnon	sk	1
1256	Maine Scrub Kangaroo	sk	1
1257	Turrass	sk	1
1258	do	sk	1
1259	Porphyro		1
1260	Tram Tramitis		1

NATURAL HISTORY OF VICTORIA.

Locality whence obtained.

Donor's Name.

Remarks.

Murray Scrub

Fine specimen seen at
Lake Boga but subsequently
met with even on the
Darling

Lagoons & swamps

This species is abundant
in the thick scrub and often
seen in flocks from two
to twenty jumping quickly
along in single files and
rubs out then squalling down
to look back.

CATALOGUE OF THE MUSEUM OF

Museum Number.	Name of Specimen.	Description of the Specimen.	Number of Specimen.
1261	Kumany		1
1262	Kahlere		1
1263	Tivian Skeleton		1
1264	Large Scrub Kangaroo		1
1265	Tivian Skeleton		1
1266	Kahlere Skeleton		1
1267	Kumany		1
1268	Kahlere Skeleton		1
1269	do	do	1
1270	do	do	1
1271	do	do	1
1272	Kumany		1
1273	Warum	ell	1
1274	Booring	f	1
1275	do	ell	1
1276	Little Gassner	ell	1
1277	Temporal Pouches	f	1
1278	Brown bellied little Cuckoo	ell	1
1279	Black eyed Grasscans		1
1280	Magpie Larva		1

NATURAL HISTORY OF VICTORIA.

Locality whence obtained.

Donor's Name.

Remarks.

This little animal is very
secretive in any part of
the scrub. The natives would
dig it out of the ground.

Murray Scrub

This little Rat is often found
in hollow branches looking
for insects and the seeds
of the natives food.

CATALOGUE OF THE MUSEUM OF

Museum Number.	Name of Specimen.	Description of the Specimen.	Number of Specimens
1281	Mondillum dullum dullum ^{ell}		1
1282	Rann Rann		1
1283	Mondillum dullum dullum f		1
1284	Mauu Scrubb Kangaroo ^{ell}		1
1285	Redum red Grasshopper f		1
1286	Roaming ^{ell}		1
1287	Temponal Pomathominus		1
1288	Black sand Cookoo		1
1289	Roaming f		1
1290	Pomathominus f		1
1291	Roaming ^{ell}		1
1292	Mauu Scrubb Kangaroo ^{ell}		1
1293	Robin (dipped black cap) f		1
1294	Roaming f ^{ell}		1
1295	do " Skelton		1
1296	Kumang		1
1297	Adulaid Parross f		1
1298	Kussan		1
1299	Kathine Skelton		1
1300	Kumang		1

NATURAL HISTORY OF VICTORIA.

Locality whence obtained.

Donor's Name.

Remarks.

A beautiful little mouse with thick tail and the ears not unlike that of a fox is very common and will attack when enclosed in a box and creep in and devour them. It is near Lupial.
Favored bushes and their favored places of resort.

Mammals

This curious burrowing person lives his warren after dark and lives on roots etc

Plentiful on the edge of the clearing lives in large families and dig like a Rabbit

CATALOGUE OF THE MUSEUM OF

206

Museum Number.	Name of Specimen.	Description of the Specimen.	Number of Specimen
1301	Booming		1
1302	do		1
1303	do	♂	1
1304	Brown tailed Bronzed winged Cuckoo		1
1305	Long billed Cuckoo		1
1306	Whirrapurra	young	1
1307	Black checked little brown Hawk		1
1308	Booming		1
1309	Merrin		1
1310	Long billed Cuckoo	♂	1
1311	Booming	♂	1
1312	Siber back'd Puscus bird		1
1313	Little Grasshopper		1
1314	Booming		1
1315	Crimson bellied Parrakeet		1
1316	Booming	♂	1
1317	do	♂	1
	Brown throated Cuckoo	♂	
1318	Crimson bellied Parrakeet	♂	1
1319	Little Black backed Magpie		1
1320	Brown throated Pachycephalus	♂	1

NATURAL HISTORY OF VICTORIA.

Locality whence obtained.

Donor's Name.

Remarks.

E. S. W. Side of the Murray

Wattle Scrub

rare and shy

*the natives very often
start this bird during
the day time in looking
for Ptilinopus etc. all
of the hollow branches
of trees*

*Seen on the Anabranche
of the Darling this bird
has been seen.*

CATALOGUE OF THE MUSEUM OF

Museum Number.	Name of Specimen.	Description of the Specimen.	Number of Specimens.
1321	Booming	f	1
1322	do	all	1
1323	Brown throated Tachypterus		1
1324	do do		1
1325	do do		1
1326	Booming	all	1
1327	do	f	1
1328	Emerson bellied Parakeet	all	1
1329	do do	all	1
1330	Magpie Lark		1
1331	Blue banded Grassparrot	all	1
1332	Red rumped Grassparrot	all	1
1333	do do Brown capped Pomatorhinus		1
1334	Brown capped Pomatorhinus		1
1335	do do	f	1
1336	Rufous rumped Colluricincla		1
1337	Poga Honeyeater		1
1338	Spine checked Honeyeater	all	1
1339	Emusid Oriole	f	1
1340	Lake Poga Honeyeater		1

NATURAL HISTORY OF VICTORIA.

Locality whence obtained.

Donor's Name.

Remarks.

Murray Scrubb

pusciferous

CATALOGUE OF THE MUSEUM OF

Museum Number.	Name of Specimen.	Description of the Specimen.	Number of Specimens.
1341	Long billed Cuckoo	♂	1
1342	do do	♂	1
1343	do do	♂	1
1344	Yellow crested do	♂	1
1345	Brown throated Pachycephalus		1
1346	Blue banded Grassparrot	♂	1
1347	Crested Oriole	♂	1
1348	Brown throated Eucanthia	♂	1
1349	Blue banded Grassparrot	♂	1
1350	do do	♂	1
1351	Yellow crested Cuckoo	♂	1
1352	Booming Skua		1
1353	Glaucous		1
1354	Booming	♂	1
1355	do	♂	1
1356	do	♂	1
1357	do	♂	1
1358	do		1
1359	Little Golden Eagle	♂	1
1360	Blue banded Grassparrot	♂	1

NATURAL HISTORY OF VICTORIA.

Locality whence obtained.

Donor's Name.

Remarks.

This Bird congregates in large flocks and the females only appear in Company with the males or Colours feeding on grass seeds etc they roost in the topmost branches of dry Eucalypti of the Banks of the River

~~Small~~ Red Throat

Murray Scrub

CATALOGUE OF THE MUSEUM OF

Museum Number.	Name of Specimen.	Description of the Specimen.	Number of Specimens
1361	Crested Pigeon	all	1
1362	Crimson bellied Parakeet		1
1363	Yellow Crested Cuckoo	Sk	1
1364	Crimson bellied do		1
1365	Booming		1
1366	Yellow Crested Cuckoo	Sk	1
1367	do do		1
1368	Kahlhene?	Skittles	1
1369	do	4	1
1370	do	4	1
1371	do	4	1
1372	Mondullundelundelum		1
1373	Booming	all	1
1374	Humany		1
1375	do.		1
1376	Kullann		1
1377	do		1
1378	Ram Ram		1
1379	Large Lizard		1
1380	Tunnass		1

NATURAL HISTORY OF VICTORIA.

Locality whence obtained.

Donor's Name.

Remarks.

Murray Scabb

*this little macropid
mouse is sometimes
found by the native
woman but is by me
means perisphal*

Museum Number.	Name of Specimen.	Description of the Specimen.	Number of Specimens.
1781	Booming	ell	1
1782	Turrass		1
1783	do		1
1784	Fish Tick		1
1785	do		1
1786	do		1
1787	Crawfish of the Pilykonggo		20
1788	Pessers Red Kangaroo		1
1789	Turrass		1
1790	Grey Kangaroo	ell	1
1791	Warum	f	1
1792	Ram Ram		1
1793	Kahlbun		1
1794	Ram Ram		1
1795	Turrass	f	1
1796	do	ell	1
1797	Long bitid Cockatoo		1
1798	Ram Ram		1
1799	Goassur		1
1800	Black and Cockoo		1

NATURAL HISTORY OF VICTORIA.

Locality whence obtained.

Donor's Name.

Remarks.

Murray River

do

do

Bylongo ^{reef} do
along the banks
of the Darling

Wattle scrubs on
the Darling River

this beautiful Kawgana
is very rare it is some
times seen nearly white
color. -

Murray scrubs

CATALOGUE OF THE MUSEUM OF

Museum Number.	Name of Specimen.	Description of the Specimen.	Number of Specimens.
1801	Crested Scrub Bird	♂	1
1802	Crested Pigeon		1
1803	do	♂	1
1804	Goatsucker	♂	1
1805	Black cap Robin	♂ <i>the passed up in to the collection forwarded July 22. 1857</i>	1
1806	Tunnass		1
1807	?	♂ ♂	1
1808	Brown throated Tachypterus		1
1809	do do		1
1810	do do	♂ Exchanged. See Out book. p. 21.	1
1811	Crimson bellied Tunnass	— do — do —	1
1812	do do		1
1813	Peaceful Ground dove	♂	1
1814	Brown eyed crowned Terebra		1
1815	Egg "Kumang"		1
1816	Young Noddy	<i>List No. XIV Alford collection August 3. 1857</i>	1
1817	Noddy	<i>Miscellaneous Noddy?</i>	1
1818	do		1
1819	Little Goatsucker	♂	1
1820	Brown throated Cuckoo	♂	1

NATURAL HISTORY OF VICTORIA.

Locality whence obtained.

Donor's Name.

Remarks.

Mulla Scrub

*Henry Williams Esq
Gall. Gall Station ^{Stony} River*

CATALOGUE OF THE MUSEUM OF

Museum Number.	Name of Specimen.	Description of the Specimen.	Number of Specimens
1821	<i>Chloris f</i>		1
1822	<i>Ammonia bellid Parakeet f</i>		1
1823	<i>do do M</i>		1
1824	<i>do do M</i>		1
1825	<i>do do M</i>		1
1826	<i>do do M</i>		1
1827	<i>do do M</i>		1
1828	<i>Spinus oregonus Honeycreeper M</i>		1
1829	<i>Sitta chloris Mandellum delum M</i>		1
1830	<i>Contopus coronatus sonora Mandellum delum f</i>		1
1831	<i>do do</i>		1
1832	<i>Sitta chloris f</i>		1
1833	<i>Pipilo fuscus f</i>		1
1834	<i>do do f</i>		1
1835	<i>do do ^{Kunming} Yellow-ringed Parrot M</i>		1
1836	<i>do do ^M Red-rumped grass warbler</i>		1
1837	<i>Pipilo chlorurus f</i>		1
1838	<i>Pouter Ground dove</i>		1
1839	<i>do do M</i>		1
1840	<i>do do M</i>		1

NATURAL HISTORY OF VICTORIA.

Locality whence obtained.

Donor's Name.

Remarks.

Mallee Scrub
and on the Banks
of the Darling

Forwarded Aug 1857 to Melbourne

a very beautiful bird
very shy and always going
in large flocks in
search of food. —

Mallee Scrub

Forwarded to Melbourne

CATALOGUE OF THE MUSEUM OF

Museum Number.	Name of Specimen.	Description of the Specimen.	Number of Specimens.
1841	Peaceful Ground dove	all	1
1842	do do	all	1
1843	do do	all	1
1844	Common Shouered Grassparrot		1
1845	Kohle Patheae	all	1
1846	Peaceful Ground dove Kohle		1
1847	Pitohui Green Bird		1
1848	Peaceful Ground dove	all	1
1849	Common Grassparrot	all	1
1850	Bronze winged Cuckoo (rufus)	f	1
1851	Kohle	all	1
1852	Peaceful Ground dove	all	1
1853	Bronze winged Cuckoo	all	1
1854	Breasted Cuckoo	f	1
1855	do do	all	1
1856	Bronze winged Cuckoo	f	1
1857	Peaceful Ground dove		1
1858	Black eared Titi		1
1859	do do Tunnest		1
1860	Hummingbird		1

NATURAL HISTORY OF VICTORIA.

Locality whence obtained.

Donor's Name.

Remarks.

forwarded to Melbourne
Aug 1857

forwarded to Melbourne
Aug 1857
near the Lower Murray
and very rare. —

of this beautiful little Parus was only one specimen
was obtained on the Banks of the Darling they were
never observed before and not seen elsewhere. There
was a flight of about 15 or 20 of them together they were
very quiet on the wing and very shy indeed.

forwarded to Melbourne
Aug 1857

forwarded to Melbourne
Aug 1857

forwarded to Melbourne
Aug 1857

Harling Smith

CATALOGUE OF THE MUSEUM OF

Museum Number.	Name of Specimen.	Description of the Specimen.	Number of Specimens
1861	Punnett Brcaple Panattonimus	all	/
1862	White faced Cuckoo Br bellied Cuckoo	all	/
1863	do do	all	/
1864	Brown winged Cuckoo ^{with} with tail Brcaple Panattonimus	all	/
1865	Casual Ground dove	f	/
1866	Shrike Tit	all	/
1867	Brimson bellied Tanager	all	/
1868	Crested Pigon	all	/
1869	Casual Ground dove Sally's Colluricincla	f	/
1870	General Cuckoo	f	/
1871	Corymbic Crowned Tanager	f	/
1872	Many colored Tanager Merin	all	/
1873	White throated Cuckoo	all	/
1874	Red rumped Grassparrot	all	/
1875	Brown throated Paryephan	all	/
1876	Long billed Cuckoo	all	/
1877	Elon duann duann		/
1878	Shrike Tit	all	/
1879	Brown throated Paryephan	all	/
1880	Blue banded Grassparrot	all	/

NATURAL HISTORY OF VICTORIA.

Locality whence obtained.

Donor's Name.

Remarks.

Murray and
Darling Scrubs

Spawning among the
toppled branches
of high Eucalyptus

very swift and shy

How birds might be obtained
by men going out together
and getting the flock between
themselves

CATALOGUE OF THE MUSEUM OF

Museum Number.	Name of Specimen.	Description of the Specimen.	Number of Specimens
	<i>Tinnass</i>		
1881	<i>Black backed blue Wren</i> <i>ell</i>		/
1882	<i>Brown winged Cuckoo</i> <i>ell</i>		/
1883	<i>Kottui</i> <i>f</i>		/
1884	<i>Red rumped Grasspinner</i>		/
1885	<i>Shrike Tit</i> <i>f</i>		/
1886	<i>Brown throated Tachyptila</i> <i>f</i>		/
1887	<i>Tinnass</i> <i>f</i>		/
1888	<i>Brown throated Tachyptila</i> <i>ell</i>		/
1889	<i>Red Mambula</i> <i>ell</i>		/
1890	<i>Titkin</i> <i>ell</i>		/
1891	<i>Shrike Tit</i> <i>ell</i>		/
1892	<i>Crested Oriole</i> <i>f</i>		/
1893	<i>Shrike Tit</i> <i>yellow</i>		/
1894	<i>do</i>		/
1895	<i>Lake Boga Honeyeater</i> <i>ell</i>		/
1896	<i>do do</i>		/
1897	<i>Many colored Pardalipicus</i> <i>f</i>		/
1898	<i>Elm-kass</i> <i>ell</i> <i>?</i>		/
1899	<i>Matta Penis Mangrove</i> <i>Laurin ang</i>		/
1900	<i>do do</i>		/

NATURAL HISTORY OF VICTORIA.

Locality whence obtained.

Donor's Name.

Remarks.

Murray and
Darling Scrubs

forwarded to Melbourne
Aug 1857

they being fresh from
65 to 8 young ones

forwarded to Melbourne
Aug 1857

do do

CATALOGUE OF THE MUSEUM OF

Museum Number.	Name of Specimen.	Description of the Specimen.	Number of Specimens
1901	Tinian Skinned		/
1901	Small Scrub Kangaroo	ell	/
1902	Tinian	sk	/
1902	do do	ell	/
1903	Pinnian		/
1903	Red Kangaroo	ell	/
1904	Pinnian		/
504	do do	ell	/
505	<i>Emu</i>		/
506	<i>Red Kangaroo</i>		/
507	<i>Emu</i>		/
508	<i>Emu</i>		/
509	<i>Emu</i>		/
510	<i>Emu</i>		/
511	<i>Emu</i>		/
512	<i>Emu</i>		/
513	<i>Emu</i>		/
514	<i>Emu</i>		/
515	Yellow ringed Parrot	sk	/
516	<i>Emu</i>		/
517	<i>Emu</i>		/
518	<i>Emu</i>		/
519	<i>Emu</i>		/
520	<i>Emu</i>		/

NATURAL HISTORY OF VICTORIA.

Locality whence obtained.

Donor's Name.

Remarks.

found in the
colle...

^{the country on}
this large Kangaroo inhabits
both ~~the~~ banks of the Murray
it is very fleet, in particular
the females and not easily
taken by the dogs.
They are mostly seen
in small bands from 2 to
5 or 6.

Murray and
Darling Rivers

this interesting animal
builds habitations of dry
sticks about 3 or 4 feet high
and 10 or 12 in circumference
it inhabits the same way on
the Darling and is considered
good to eat. by the natives

CATALOGUE OF THE MUSEUM OF

Museum Number.	Name of Specimen.	Description of the Specimen.	Number of Specimens.
521	Summer Bird Sk		1
522	Summer Bird Sk		1
523			1
524			1
525			1
526			1
527			1
528			1
529			1
530			1
<hr/>			
	Adelaida Parrot Sk	September 1857	1
531			1
532	Crested Pigeon		1
533	do do		1
534	Kumang		1
535	Tipponis. Mammal Skull Bird		1
536	Padach		1
537	Crested Pigeon Summer Bird		1
538	Darling little Bivalve L		1
539	Crested Pigeon		1
540	Custoo with white skin e. back		1

NATURAL HISTORY OF VICTORIA.

Locality whence obtained.

Donor's Name.

Remarks.

The snakes under this
cattle animed with
nets

Murray and
Darling Scrub.

This reptile abounds in
the plains of the Murray
and Darling and very often
has been taken in the hot sun
not far from its hole.

The Poygonum flats

very delicate and
escaping by sufficient
to address.

CATALOGUE OF THE MUSEUM OF

Museum Number.	Name of Specimen.	Description of the Specimen.	Number of Specimens
1341	Crested Wedge Bill	f	/
1942	Tinikin Sk	Skull	/
1342	Red-capped Cuckoo		/
1943	Tinikin Sk	sk	/
1343	Cuckoo with white tip		/
1344	Red-capped Robin	f	/
1345	do do	sk	/
1346	Kahlpene Sk Murreling Mouse	sk	/
1347	Furratt	sk	/
1348	Shou cat	yeu	/
1349	do	f	/
1350	Pethack		/
1351	do		/
1352	Bronze Cuckoo	sk	/
1353	Brown-throated Tachypterus Kahlpene Sk	f	/
1354	Pethack		/
1355	Brown-bellied Cuckoo	f	/
1356	Lark	sk	/
1357	Crested Oriole	sk	/
1358	Kahlpene		/
1359	do		/
1360	Crested Oriole	sk	/

NATURAL HISTORY OF VICTORIA.

Locality whence obtained.

Donor's Name.

Remarks.

*in the Saltbush
Plains along the
Banks of the Darling*

common to Melbourne

*Murray and
Darling Rivers*

*for scrubby Plains often
mistaken for a Carta*

CATALOGUE OF THE MUSEUM OF

Museum Number.	Name of Specimen.	Description of the Specimen.	Number of Specimens.
1861	Red rumped Parakeet of Turrass Sk		/
1862	Robin ?		/
1863	Crested Pigeon	f	/
1864	Parake		/
1865	do		/
1866	Parake	f	/
1867	do	f	/
1868	Parake	all	/
1869	Spotted Owl	f	/
1870	Crested Pigeon	all	/
1871	Kinnee House ?	f	/
1872	Blue banded Grassparrot	all	/
1873	Large striped Lizard		/
1874	Kahlene	young	/
1875	Striped Lizard		/
1876	Spotted Bowen Bird f		/
1877	Spotted Bowen Bird		/
1878			
1879	Striped Lizard		/
1880	Red Kangaroo	young all	/

NATURAL HISTORY OF VICTORIA.

Locality whence obtained.

Donor's Name.

Remarks.

Murray and
Darling Scrubs

The nest is apparently in
high trees along the
Moorne flats and when
there is water near
They commenced to hunt
about in the bushes during
the month of June
by Mr. Bowers

CATALOGUE OF THE MUSEUM OF

Museum Number.	Name of Specimen.	Description of the Specimen.	Number of Specimens.
1681	Sleeping Lizard Pisack Skelton		1
1682	do		1
1683	Darling Oliver		1
1684	Kathere		1
1685	Large striped Lizard		1
1686	Graucalus Skelton		1
1687	Crimson bellied Parrot ^{sk}		1
1688	Brown bellied Wood Swallow ^f		1
1689	Pisack		1
1690	Kathere ^{sk} Temporal Pomathomus		1
1691	do		1
1692	Pisack Skelton		1
1693	Pisack		1
1694	Spine checked Honeyeater ^{sk} None		1
1695	Pisack ^{sk}		1
1696	Kathere young		1
1697	Pisack Sea Swallow		1
1698	do ^{sk}		1
1699	Blue banded Grassparakeet do "		1
2000	Sleeping Lizard ^{sk} Cuckoo white skin ^{sk}		1

NATURAL HISTORY OF VICTORIA.

Locality whence obtained.

Donor's Name.

Remarks.

Murray and
Darling Scrubs

Very large numbers at
Swan Hill and at
the swamps of the
Murray and
also at Lake Boga

CATALOGUE OF THE MUSEUM OF

Museum Number.	Name of Specimen.	Description of the Specimen.	Number of Specimens.
2601	Brown capd Tomalhoornus		/
2602	Kallene		/
2603	Brown bellied Cuckoo	ell	/
2604	Blue banded Grassparrot	ell	/
2605	Kallene Landwang Skuison		/
2606	Black banded ellata Parrot	ell	/
	do		
2607	do	ell	/
2608	Kallene	y	/
2609	Chondulun dillum		/
2610	Red capd Parakeet?		/
2611	Pasack Skuison Lissa Parakeet	f	/
2612	Red capd Parakeet		/
2613	Crested Pigeon	ell	/
2614	Blue banded Grassp	sk	/
2615	Kallene young Landwang		/
2616	Blue banded Grassparrot	ell	/
2617	do do	ell	/
2618	Spotted Raven Bird	sk	/
2619	Spotted Raven Bird	sk	/
2620	Shur winged Raven		/

NATURAL HISTORY OF VICTORIA.

Locality whence obtained.

Donor's Name.

Remarks.

Murray and
Darling Scrub

This marsupial animal
utilises both shores of
the Murray and Darling
feeds on coarse grass is
nocturnal in its habits
and constructs a sort
of allodia in the long
grass.

Landwary

Thomson's unshed it often
takes refuge in hollow
logs and it is easily
secured alive. 4 of these
singular animals were
brought alive at the same
for some time they would
eat meat but always refused
lettuces before anything else

CATALOGUE OF THE MUSEUM OF

Museum Number.	Name of Specimen.	Description of the Specimen.	Number of Specimens.
	yellow rumped Parakeet		
2621	Adelaida Parrot		/
2622	Kahlone Red Robin		/
2623	Mundellus deller		/
2624	Peaceful Ground dove ^{all}		/
2625	Red eared Robin		/
2626	Kahlone		/
2627	do		/
2628	Brown bellied Cuckoo		/
2629	Shrike Tit Monca		/
2630	Kahlone		/
2631	Pasack		/
2632	Kumrang		/
2633	Shrike Tit ^{all}		/
2634	Brown bellied Wood Swallow		/
2635	Thin checked Honeyeater ^{all}		/
2636	Hawk ?		/
2637	Peaceful Ground dove		/
2638	Mundellus deller		/
2639	do		/
2640	Ram Rammit ^{all}		/

NATURAL HISTORY OF VICTORIA.

Locality whence obtained.

Donor's Name.

Remarks.

*Murray and
Darling Scrub*

CATALOGUE OF THE MUSEUM OF

Museum Number.	Name of Specimen.	Description of the Specimen.	Number of Specimens.
2641	Crimson bellied Parrot sk		/
2642	Clouded dun dellow sk White throated Falcon		/
2643	Crested Tigeon sk		/
2644	Mandrea (Duck Hawk)		/
2645	Red capd Parakeet f		/
2646	Brown capd ^f Camattonims		/
2647	Red capd Parakeet		/
2648	do do		/
2649	Green capd Warbler Brown capd Camattonims		/
2650	Beautiful Ground dove		/
2651	Fronted Thrush Tit f		/
2652	Clouded dun dellow		/
2653	Quail		/
2654	Kathene		/
2655	do		/
2656	do		/
2657	White headed lilla Eagle	sk	/
2658	Trogon	sk	/
2659	do do Brown capd Camattonims	f	/
2660	Crested Wedgebill		/

NATURAL HISTORY OF VICTORIA.

Locality whence obtained.

Donor's Name.

Remarks.

Murray and
Darling Scrub

This little Hawk is the great
annoyance of the Ducks and
Cormorants and he may be
seen any time during the
day perched on a dry branch
or skimming over the surface
of the water in search of
prey. —

CATALOGUE OF THE MUSEUM OF

Museum Number.	Name of Specimen.	Description of the Specimen.	Number of Specimens.
	<i>Graucalus</i>	<i>all</i>	
2661	<i>Crimson bellied Parakeet</i>		/
2662	<i>Kahlpen</i>		/
2663	<i>Pinnikin</i>	<i>f</i>	/
2664	<i>Shrike Tit</i>	<i>f</i> Exchanged see out book p. 21.	/
2665	<i>Red Rumped Parakeet</i>	<i>all</i>	/
2666	<i>Sea Lizard</i>		/
2667	<i>Kahlpen</i>		/
2668	<i>do</i>		/
2669	<i>do</i> <i>Sk</i>		/
	<i>Red rumped Parakeet</i>		/
2670	<i>Korany</i>		/
2671	<i>Brown eyed Pomettinus</i>	<i>all</i>	/
2672	<i>White winged Robin</i>		/
2673	<i>Kahlpen</i>		/
2674	<i>do</i>	<i>f</i>	/
2675	<i>Three Mounds ?</i>		/
2676	<i>Moucat</i>	<i>f</i>	/
2677	<i>Pinnikin</i>	<i>all</i>	/
2678	<i>Black backed Blue Wren</i>	<i>all</i>	/
2679	<i>Brown throated Acanthia</i>	<i>all</i>	/
2680	<i>Red eyed Robin</i>	<i>all</i>	/

NATURAL HISTORY OF VICTORIA.

Locality whence obtained.

Donor's Name.

Remarks.

Murray and
Darling Scrub

This handsome little bird
is to be seen on a fine day
at the edge of the scrub
as on p. 10 or 15 km

Museum Number.	Name of Specimen.	Description of the Specimen.	Number of Specimens
2681	Little Wren	♂	/
2682	Brown rumped Woodswallow	♂	/
2683	Red cap'd Parakeet	♂	/
2684	Brown Wood Swallow		/
2685	Pinnakin	♂	/
2686	Kinnee Mouse		/
2687	Crested Cooica	♂	/
2688	Kestree	♂	/
2689	Black throated Francolin		/
2690	Francolin		/
2691	Beautiful Owl	♂	/
2692	Red Rumped Parakeet		/
2693	Yellow ringed Parakeet		/
2694	White Tip in Neck Cuckoo		/
2695	Brown Wood Swallow		/
2696	Little Treecreeper	♂	/
2697	White Tip in Neck Cuckoo		/
2698	Lanceolated Honeyeater		/
2699	Bronze Cuckoo		/
2700	Goatsucker		/

NATURAL HISTORY OF VICTORIA.

246

Locality whence obtained.

Donor's Name.

Remarks.

*Murray and
Darling Scrub*

283.

Museum Number.	Name of Specimen.	Description of the Specimen.	Number of Sp.
<u>List No XVI of Specimens collected in October 1857</u>			
2101	Yellow ringed Parrot	♂	/
2102	Pinnikin	♀	/
2103	Pattuck	♂	/
2104	Br throated Tachysseles		/
2105	Pattuck	♀	/
2106	Kallpene		/
2107	do		/
2108	do		/
2109	Lark		/
2110	Russet Flycatcher		/
2111	Red cap Robin	♂	/
2112	Brown bellied Woodswallow		/
2113	Kallpene		/
2114	Spine shuted Honeyeater	♂	/
2115	Red cap Robin	♂	/
2116	Brown bellied Cuckoo	♂	/
2117	do do		/
2118	Kallpene		/
2119	do		/
2120	do Sk		/

NATURAL HISTORY OF VICTORIA.

Locality whence obtained.

Donor's Name.

Remarks.

Murray and Darling Scrubb

very plentiful on the Banks of the Murray

one of these little Birds had built its nest in a shed but not for the purpose. It had 3 eggs and reared out young and during this time the old bird became so tame that it would sit on my hand & would take a little of my food or other insect from between the fingers.

Museum Number.	Name of Specimen.	Description of the Specimen.	Number of Specimens
2121	Kalbfene		/
2122	do		/
2123	Pachycephala		/
2124	do Partridge	sk	/
2125	do "	sk	/
2126	Kalbfene		/
2127	do		/
2128	Brown bellied Woodswallow	sk	/
2129	Kalbfene		/
2130	do		/
2131	do		/
2132	do		/
2133	do		/
2134	Brown bellied Woodswallow	sk	/
2135	do	sk	/
2136	Kalbfene		/
2137	do		/
2138	do		/
2139	Tilley's Colluricincla Tilley's	sk	/
2140	Brown capid Pomallorimus Humming	sk	/

NATURAL HISTORY OF VICTORIA.

Locality whence obtained.

Donor's Name.

Remarks.

Murray and
Darling Scrub

Museum Number.	Name of Specimen.	Description of the Specimen.	Number of Specimens.
2141	Pasack Skellerson		1
2142	Wood Swallow <i>Sk</i> Brown-caped Parrotlet		1
2143	Tittian <i>4</i>		1
2144	Kalpen		1
2145	do		1
2146	Blue banded Grass parrot <i>all</i>		1
2147	Black fronted Thrush Tit <i>all</i>		1
2148	Yellow Parrot Brown-caped Parrotlet		1
2149	White Tit. Neck Cuckoo		1
2150	Spine checked Honeyeater <i>all</i>		1
Specimens collected during the month of October at Otondelles near			
2151	Wood Swallow <i>all.</i>		1
2152	Pectoral Rail <i>all</i>		1
2153	Red rumped Parakeet		1
2154	Singing Honeyeater		1
2155	Black cap? Titula		1
2156	Blue banded Grass parakeet <i>Sk</i>		1
2157	Wood Swallow <i>all.</i>		1
2158	Merrin		1
2159	Pattuck		1
2160	Sparrow Hawk		1

NATURAL HISTORY OF VICTORIA.

Locality whence obtained.

Donor's Name.

Remarks.

Murray and Darling Scrubb

junction of the Darling and Murray River

Museum Number.	Name of Specimen.	Description of the Specimen.	Number of Specimens
2161	Crested Pigeon	♂	1
2162	do do	♂	1
2163	Funeral Cuckoo		1
2164	Little Parakeet		1
2165	Black eared Cuckoo	♂	1
2166	Tied Robin		1
2167	Blue banded Grassparakeet	♂	1
2168	Red rumped Parakeet		1
2169	Western or Hawk	B 3098	1
2170	Peaceful Ground Dove		1
2171	Crested Pigeon		1
2172	Crested Pigeon	♂	1
2173	do do	♀	1
2174	Many colored Parakeet		1
2175	White crested Swallow		1
2176	do do		1
2177	Many colored Parakeet		1
2178	[♂] Coryphocorax Parakeet	♂	1
2179	Restless Flycatcher	♂	1
2180	Tannus Honeyeater		1

NATURAL HISTORY OF VICTORIA.

Locality whence obtained.

Donor's Name.

Remarks.

Murray and Darling Scrub

this bird is often met with on sandy plains it builds its nest (usually a few sticks cemented together) on sand about half a ton has been and deposits 3 to 4 eggs

Museum Number.	Name of Specimen.	Description of the Specimen.	Number of Specimens.
2181	Pirritin		1
2182	Singing Honeyeater		1
2183	White fronted do		1
2184	Pirritin	♂	1
2185	Crested Pigeon	all	1
2186	Red Robin	♂	1
2187	Lipua		1
2188	Passer		1
2189	Turdus		1
2190	Merrin		1
2191	Black & Cindorampus		1
2192	Coryphic crowned Parakeet	all	1
2193	Kahlpenes		1
2194	Spotted sided Finch		1
2195	Crested Pigeon	all	1
2196	Crested Pigeon		1
2197	Crested Troica		1
2198	Bar tailed Cuckoo	♂	1
2199	Crested Troica		1
2200	Brown capped ^(to) <i>Amaltonia</i>		1

NATURAL HISTORY OF VICTORIA.

Locality whence obtained.

Donor's Name.

Remarks.

Murray and Darling Scrub

Plants are numerous
on the Box tree flats near
Billylongs and Lyons
on the Darling

This little plant is generally
observed in Polyommata Scrub
and the adjoining Box tree
scrub.

CATALOGUE OF THE MUSEUM OF

Museum Number.	Name of Specimen.	Description of the Specimen.	Number of Specimens.
2401	Western Crown Hawk		1
2402	White breasted Swallow		1
2403	Black tailed Parrot		1
2404	do do do		1
2405	do do do		1
2406	do do do		1
2407	Kallpini Skulls		1
2408	Pinnikin "		1
2409	do all		1
2410	do all		1
2411	Gray Falcon		1
2412	Pinnikin		1
2413	Long billed Cuckoo		1
2414	Chestnut backed Ground Thrush		1
2415	Brown eyed Parrot		1
2416	Kallpini Skulls		1
2417	Chestnut backed Ground Thrush		1
2418	Black Cuckoo red tail		1
2419	Maui Tern & Mangrove Sk		1
2420	Black tailed Parrot Sk		1

NATURAL HISTORY OF VICTORIA.

Locality whence obtained.

Donor's Name.

Remarks.

Murray and Darling Scrub

this handsome Parrakeet is very scarce near the River but is more plentiful ~~near~~ in the thick scrub from whence they usually resort to the nearest Water but return immediately after having satisfied their thirst.

this bird constructs a rough nest on the ground and lays from 3 to 4 Eggs of greenish Color with darker spots

Oct. I shot 2 young birds of this handsome species of Cockatoo they were feeding on the Cypress ~~ground~~ and did not appear as if they had ever formerly arrived from the interior. I would it seems they bred.

Museum Number.	Name of Specimen.	Description of the Specimen.	Number of Specimens.
2121	Gilberts Pachysiphaca		1
2122	Pinnikin Skuas		1
2123	Crested Oriole Sk		1
2124	Booming Sk		1
2125	Black eared Cuckoo f		1
2126	Brown cap'd Pomatorhinus ^{ell}		1
2127	Gilberts Pachysiphaca ^{ell}	Exchanged - see Out book. p. 21	1
2128	Banded Thick Head		1
2129	Crested Pigeon		1
2130	Fronted Tinker Tit ^{ell}		1
2131	Pinnikin Skuas		1
2132	Dingo		1
2133	Fronted Tinker Tit		1
2134	Mauu Scrub Kangaroo		1
2135	Russet Flycatcher ^{ell}		1
2136	Shining Cuckoo		1
2137	Crested Pigeon ^{ell}		1
2138	Peacocks Ground dove		1
2139	Red Rumped Parakeet ^{ell}		1
2140	Cum		1

NATURAL HISTORY OF VICTORIA.

Locality whence obtained.

Donor's Name.

Remarks.

Murray and
Darling Scrubs

Museum Number.	Name of Specimen.	Description of the Specimen.	Number of Specimens.
2241	Rufous breasted Cincoramphus		1
2242	Striped Lizard		1
2243	Selby's Colluricincla		1
2244	Varied Graculus		1
2245	Emu	all	1
2246	Dingo		1
2247	Emu		1
2248	Shining Cuckoo		1
2249	Crested Oriole	all	1
2250	Black Fantail. Tropicbird		1
2251	Red rumped Parakeet		1
2252	Garnet Honeyeater	all	1
2253	Selby's Colluricincla		1
2254	Prinon Oriole		1
2255	Spotted Lizard		1
2256	Black eared Cuckoo		1
2257	Sea Lizard		1
2258	Tunnass		1
2259	Tunnass	all	1
2260	Paradise Thick head		1

NATURAL HISTORY OF VICTORIA.

Locality whence obtained.

Donor's Name.

Remarks.

Murray and
Darling Scrub

CATALOGUE OF THE MUSEUM OF

Museum Number.	Name of Specimen.	Description of the Specimen.	Number of Specimens.
2261	White fronted Honeyeater etc		1
2262	Western brown Hawk		1
2263	Black breasted Eudorampus		1
2264	Blue banded Grassparrot		1
2265	Chestnut rumped etc etc etc		1
2266	Banded Wren		1
2267	White eared Honeyeater		1
2268	Black breasted Eudorampus		1
2269	Banded Wren		1
2270	White fronted Honeyeater		1
2271	Crested Oriole		1
2272	Banded Wren		1
2273	Leipoa		1
2274	Blue banded Grassparrot		1
2275	Many colored Parakeet		1
2276	Crested Oriole f		1
2277	Wool Nightjar		1
2278	Spine checked Honeyeater		1
2279	Red rumped Parakeet		1
2280			1

NATURAL HISTORY OF VICTORIA.

Locality whence obtained.

Donor's Name.

Remarks.

*Murray and
Darling Scrub*

CATALOGUE OF THE MUSEUM OF

Museum Number.	Name of Specimen.	Description of the Specimen.	Number of Specimens.
2181	Turrats	all	/
2182	do	all	/
2183	Yellow rumped Parakeet		/
2184	Red throated Pachycephala		/
2185	Yellow winged Parakeet		/
2186	Grey Crow Tinkie		/
2187	Monas	Sk	/
2188	Greenish Wren	Exchanged - see out book. p. 21.	/
2189	Merrin		/
2190	Kahlpene	Sk	/
2191	Pinnikin	Sk	/
2192	Nest of Oroica		/
2193	Pattuck	Sk	/
2194	Yellow rumped Parakeet		/
2195	Banded Wren		/
2196	Nest of Spotted Raven Bird		/
2197	Merrin		/
2198	Pinnikin	f	/
2199	Membanaseus Duck		/
2200	Banded Wren		/

NATURAL HISTORY OF VICTORIA.

Locality whence obtained.

Donor's Name.

Remarks.

*Murray and
Darling Scrub*

CATALOGUE OF THE MUSEUM OF

Museum Number.	Name of Specimen.	Description of the Specimen.	Number of Specimens.
2201	Pastucke	Sk	1
2202	Roosting	Sk	1
2203	Turnstone	Sk	1
2204	do	Sk	1
2205	Owes Stigsjar		1
2206	Red-numped Parakeet		1
2207	Crested Pigeon	all	1
2208	Crested Widge Pigeon		1
2209	Melitreptus	all	1
2210	Pacific Ground Dove	all	1
2211	Crested Widge Pigeon	all	1
2212	Rufous-billed Cinnamon Warbler		1
2213	Melitreptus		1
2214	Red-numped Parakeet	all	1
2215	Black-throated Thrush	all	1
2216	Crested Pigeon	all	1
2217	Melitreptus		1
2218	Crested Oriole		1
2219	Striped Lizard		1
2220	do		1

NATURAL HISTORY OF VICTORIA.

Locality whence obtained.

Donor's Name.

Remarks.

*Murray and
Darling Scrub*

CATALOGUE OF THE MUSEUM OF

Museum Number.	Name of Specimen.	Description of the Specimen.	Number of Specimens.
2221	Striped Lizard		/
2222	Crested Pigeon	all	/
2223	Red rumped Parakeet		/
2224	Melitreptus	♂	/
2225	do		/
2226	Black fantail Flycatcher	all	/
2227	Striped Lizard		/
2228	Turrast		/
2229	Merrin	♂	/
2230	Wood Swallow	all	/
2231	Edelaine Parakeet	all	/
2232	Red rumped Parakeet		/
2233	Yellow ringed do	"	/
2234	Merrin	"	/
2235	Spotted Lizard		/
2236	White winged Wren	all	/
2237	Striated Pardalote		/
2238	Melitreptus		/
2239	White crested Swallow		/
2240	Crested Midge Owl	♂	/

NATURAL HISTORY OF VICTORIA.

Locality whence obtained.

Donor's Name.

Remarks.

*Murray and
Darling Lakes*

Museum Number.	Name of Specimen.	Description of the Specimen.	Number of Specimens
2241	Melitropeus		/
2242	Peaceful Ground dove	all	/
2243	Yellow numped Parakeet		/
2244	Many colored Parakeet		/
2245	feruginous Sandstone	Must all	/
2246	Wood Swallow	all	/
2247	Mural	Misogonid.	/
2248	White breasted Swallow		/
2249	Black Fantail Flycatcher		/
2250	Spotted Lizard		/
2251	Spotted do	Sk	/
2252	do do	Sk	/
2253	Yellow winged Parakeet		/
2254	Piping Crow Shrike		/
2255	White breasted Swallow		/
2256	Blue Wren		/
2257	Spotted sided Finch	all	/
2258	Tree Martin	all	/
2259	Panda Wren		/
2260	Tree Martin	f	/

NATURAL HISTORY OF VICTORIA.

Locality whence obtained.

Donor's Name.

Remarks.

*Murray and
Darling Scrub*

CATALOGUE OF THE MUSEUM OF

Museum Number.	Name of Specimen.	Description of the Specimen.	Number of Specimens.
2261	Peaceful Ground dove ^{ell.}		/
2262	Mineral ^{W of M. C.}		/
2263	Native Towhee		/
2264	Miss Anna's Towhee		/
2265	Parula Cuckoo		/
2266	Crested Wren		/
2267	Yellow-throated Vireo		/
2268	Mountain Wren		/
2269	Sulphur-crowned Cuckoo ^{Sk}		/
2270	Black cap Tit		/
2271	do do		/
2272	Gilbert's Tachycineta		/
2273			/
2274	Blue Wren		/
2275	Banded Wren		/
2276	Crested Wren		/
2277	Trained Thrush		/
2278	Banded Wren ^{Sk}		/
2279	Spotted Towhee		/
2280	Common Wood Swallow ⁴		/

292.

NATURAL HISTORY OF VICTORIA.

Locality whence obtained.

Donor's Name.

Remarks.

Murray and
Darling Scrub

CATALOGUE OF THE MUSEUM OF

Museum Number.	Name of Specimen.	Description of the Specimen.	Number of Specimens.
2281	Adelaida Parakeet Sk		/
2282	Rufous rumped Lark "		/
2283	White spot-necked Cuckoo "		/
2284	Common Wood Swallow "		/
2285	Whiterumped Wood Swallow.		/
2286	Crested Oriole Sk		/
2287	White eared Honeyeater "		/
2288	Froned Thrush Tit "		/
2289	Red rumped Parakeet "		/
2290	Colored Sparrow Hawk		/
2291	Crested Pigeon		/
2292	Native Tomahawk		/
2293	Blacktailed Parrot		/
2294	Black br. Cincorhamphus		/
2295	Blue banded Grassparakeet Sk		/
2296	do do Sk		/
2297	Tillikin Sk		/
2298	Yellow rumped Parakeet "		/
2299	Black Duck Sk		/
2300	White fronted Thrush Sk		/

NATURAL HISTORY OF VICTORIA.

Locality whence obtained.

Donor's Name.

Remarks.

Murray and
Darling Rivers

Lagoons near
the Murray
and Darling

CATALOGUE OF THE MUSEUM OF

Museum Number. Name of Specimen. Description of the Specimen. Number of Specimens.

List No. XX of specimens collected in November 1857

2401	Merrin	all	1
2402	Crested Pigeon ^F		1
2402	Blue banded Grass Parakeet ^{M.}		1
2403	Spotted Power Bird		1
2404	Red rumped Parakeet		1
2405	Brown capped Tomattonis		1
2406	Banded Wren		1
2407	Banded Thick Head		1
2408	Banded Wren		1
2409	Brown capped Tomattonis		1
2410	do do		1
2411	Spotted Power Bird ^F		1
2412	Crested Pigeon		1
2413	Black eared Cuckoo	all	1
2414	Redless Flycatcher	all	1
2415	Crowned Tanager		1
2416	Banded thick Head		1
2417	Blue banded Grassparakeet		1
2418	Crested Wagtail	all	1
2419	(Peaceful Ground dove) ^(Köhl.)	2419 or 2409 E	1
2420	Köhl		1

NATURAL HISTORY OF VICTORIA.

Locality whence obtained.

Donor's Name.

Remarks.

*Murray and
Darling Scrubs*

CATALOGUE OF THE MUSEUM OF

Museum Number.	Name of Specimen.	Description of the Specimen.	Number of Specimens.
2321	Kōke	♂	/
2322	Tiritiri		/
2323	Red-rumped Parakeet		/
2324	do do		/
2325	Spotted Lizard?		/
2326	Tiritiri	♂	/
2327	Tiritiri	♂	/
2328	Nest of ten capped Cormorants		/
2329	Frosted Thrush Egg		/
2330	Panda Men	Exchanged. See out book p. 21	/
2331	Boobock Owl	♂	/
2332	Leadbeaters Cockatoo	♂	/
2333	Chestnut back'd Ground Thrush		/
2334	do do		/
2335	Black cap'd Tui		/
2336	White Ground Thrush		/
2337	Sanctified Honeyeater		/
2338	Little Parakeet		/
2339	etc. etc. Sanctions		/
2339	Young Emu		/
2340	do do		/

NATURAL HISTORY OF VICTORIA.

Locality whence obtained.

Donor's Name.

Remarks.

*Murray and
Darling Scrub*

CATALOGUE OF THE MUSEUM OF

Museum Number.	Name of Specimen.	Description of the Specimen.	Number of Specimens.
241	Gilberts Pachycephala		1
242	Crested Oriole		1
243	Chestnut Shouldered Grass pinnacul		1
244	Owlet tightsjar		1
245	Many colored Parrakeet		1
246	Owlet tightsjar		1
247	Many colored Parrakeet		1
248	Lanceolated Honeyeater		1
249	Peaceful Ground Dove?		1
250	Grey. Colluricincla? sk		1
251	Black tailed Parrakeet sk		1
252	Blue banded Grass pinnacul		1
253	Lanceolated Honeyeater		1
	Chestnut back'd		1
254	White Ground Thrush		1
255	do do		1
256	do do		1
257	Spotted Lizard		1
258	Banded Thick head		1
259	Moucas f		1
260	Meliphaga		1

NATURAL HISTORY OF VICTORIA.

Locality whence obtained.

Donor's Name.

Remarks.

*Murray and
Darling Rivers*

CATALOGUE OF THE MUSEUM OF

301

Museum Number.	Name of Specimen.	Description of the Specimen:	Number of Specimens.
	<i>Specimens collected during the month of October at</i>		
2361	Brown Tree Creeper		1
2362	Brown cap Tomathornius		1
2363	Melanerpes f		1
2364	Crested Widge Bui		1
2365	Crested Pigeon		1
2366	Long billed Cuckoo		1
2367	Black tailed Tanager		1
2368	do do do		1
2369	Young Oriole		1
2370	Red Robin		1
2371	White fronted Honeyeater		1
2372	Melanerpes		1
2373	Sulphur Crested Cuckoo		1
2374	^{sp} Tattuck		1
2375	Spotted Lizard		1
2376	do do		1
2377	do do		1
2378	Tattuck		1
2379	Sand stone from Wilson		1
2380	Kahlund Sk.		1

NATURAL HISTORY OF VICTORIA.

Locality whence obtained.

Donor's Name.

Remarks.

ellowdellum near the junction of Darling and Murray

*Murray and
Darling Scrub*

CATALOGUE OF THE MUSEUM OF

Museum Number.	Name of Specimen.	Description of the Specimen.	Number of Specimens.
2381	Kalliper Sk		/
2382	do "		/
2383	do "		/
2384	do "		/
2385	Spine curled Honeyeater		/
2386	Varied Graucalus		/
2387	Edelaid Parnassus		/
2388	Sandstone from N. Iron		/
2389	Crested Oroica Sk		/
2390	Kestrel Sk		/
2391	Fossil		/
2392	Brown Caped Tomattonius		/
2393	Froned Shrike Tit		/
2394	White Ground Thrusch ?		/
2395	Brown caped Tomattonius		/
2396	Peacocks Ground dove		/
2397	Yellow throated Friar Bird		/
2398	Brown caped Tomattonius of		/
2399	do do		/
2400	Van Keen Kestrel		/

NATURAL HISTORY OF VICTORIA.

Locality whence obtained.

Donor's Name.

Remarks.

*Murray and
Darling Rivers*

J. H. Wigley Esq

CATALOGUE OF THE MUSEUM OF

Museum Number.	Name of Specimen.	Description of the Specimen.	Number of Specimens.
2401	Red Robin	sk	/
2502	(Sandstone)		/
2402	do do		/
2403	Sandstone		/
2404	do		/
2405	do		/
2406	Blue headed Grassparakeet		/
2407	do		/
2408	do		/
2409	do		/
2410	Fossil		/
2411	"		/
2412	Kahlpore Skulls		/
2413			/
2414			/
2415			/
2416			/
2417			/
2418	Fossil		/
2419	Singing Honeyeater		/
2420	Blue headed Grassparakeet	sk	/

NATURAL HISTORY OF VICTORIA.

Locality whence obtained.

Donor's Name.

Remarks.

*Murray and
Darling Scrub*

Museum Number.	Name of Specimen.	Description of the Specimen.	Number of Specimens.
	Banded thick Head		/
2421	Chimney backed Ground Thrush Red Robin		/
2422	Fronted Thrush Tit Shining Cuckoo		/
2423	Piping Crow Thrush sk White fronted Honeyeater		/
2424	Red back Owl & Kallpene sk		/
2425	Black back Magpie sk Fossil		/
2426	Sleeping Lizard Fossil & 2527 Banded Wren		/
2427	do do Banded Wren		/
2428	Temple Tanathornis ell White fronted Honeyeater		/
2429	do do ell Blue banded Grass finch ell		/
2430	Crested Pigeon ell Brown red Thrush		/
2431	Blue banded Grass finch sk		/
2432	Banded Wren		/
2433	Kallpene Skullum ?		/
2434	Fossil		/
2435	Chimney backed Ground Thrush		#
2436			
2437	Magpie Lark sk		/
2438	Crested Oriole		/
2439	Gilberts Pigeon		/
2440	Yellow throated Frigate Bird		/

NATURAL HISTORY OF VICTORIA.

Locality whence obtained.

Donor's Name.

Remarks.

Overland Corner
Murray River

Overland Corner
Murray River

Murray and
Darling Rivers

CATALOGUE OF THE MUSEUM OF

Museum Number.	Name of Specimen.	Description of the Specimen.	Number of Specimens.
2441	Hallbird	Sk	1
2442	do	"	1
2443	Spotted Power Bird		1
2444	Pinniskin	Sk	1
2445	Tunnass	"	1
2446	Gilberts Pachycephala	sk	1
2447	Chestnut backed Gr Thrush		1
2448	Fossil		1
2449	Hallbird	Sk	1
2450	do	"	1
2451	Magpie	Lark	1
2452	Spine chucked Honeyeater		1
2453	Kestrel	Sk	1
2454	Hallbird	"	1
2455	Fossil		1
2456	do		1
2457	Hallbird	Sk	1
2458	Fossil		1
2459	Crested Oriole	f	1
2460	White breasted Swallow		1

NATURAL HISTORY OF VICTORIA.

Locality whence obtained.

Donor's Name.

Remarks.

Murray and Darling Scrub

Overland corner Murray River

Murray and Darling Scrub

Overland corner Murray River

Murray Scrub

Overland corner Murray River

Murray Scrub

CATALOGUE OF THE MUSEUM OF

Museum Number.	Name of Specimen.	Description of the Specimen.	Number of Specimens.
2461	Black cap'd Titmice	Exchanged - See out book, p. 21.	/
2462	Chestnut shou'ered Grassparakeet		/
2463	Yellow throated Friar Bird		/
2464	Yellow throated Friar Bird		/
2465	Meliphaga		/
2466	Fossil		/
2467	Black cap'd Titmice		/
2468	Yellow throated Friar Bird		/
2469	Chestnut Rumped Acantia		/
2470	Fronted Striped Tit		/
2471	Fossils		/
2472			/
2473			/
2474			/
2475	Chestnut shou'ered all Grassparakeet &		/
2476	Saucelored Honeyeater		/
2477	Fossil		/
2478	do		/
2479	Red cap'd Robin		/
2480	Crowned Pigeon f		/

NATURAL HISTORY OF VICTORIA.

Locality whence obtained.

Donor's Name.

Remarks.

Murray
Scrub

Overland Corner
Murray River

Murray Scrub

Overland Corner
Murray River

Murray Scrub

Overland Corner
Murray River

Murray Scrub

M No	Museum Number.	Name of Specimen.	Description of the Specimen.	Number of
	2481	Crested Pigeon		/
24	2482	Yellow throated Friar Bird	sk	/
24	2483	Sea Lizard	sk	/
24	2484	Sleeping Lizard		/
24	2485	Tirnikin	sk	/
24	2486	do	4	/
24	2487	Great Kingfisher	4	/
24	2488	Adelaide Parasit	4	/
24	2489	Spotted Power Bird	4	/
24	2490	Redless Flycatcher	4	/
24	2491	Br throated Pachycephala		/
24	2492	Temporal Pomatorhinus		/
24	2493	do do	4	/
24	2494	Greenish Pardalote		/
24	2495	Temporal Pomatorhinus	sk	/
24	2496	do do	sk	/
24	2497	Little Bush Eagle	sk	/
24	2498	Brown capd Pomatorhinus		/
24	2499	Crested Pigeon	sk	/
24	2500	do do		/

NATURAL HISTORY OF VICTORIA.

Locality whence obtained.

Donor's Name.

Remarks.

*Murray and
Darling Scrubs*

1 2	Museum Number.	Name of Specimen.	Description of the Specimen.	Number of
	2601	Yellow throated Friar Bird		/
	2602	Crested Pigeon		/
	2603			/
	2604	Microroa		/
	2605	Crested Oriole &		/
	2606	Fossil		/
	2607	Striped Lizard		/
	2608	Varied Graucalus		/
	2609			/
	2610	Shining Cuckoo		/
	2611	Gilberts Pacye		/
	2612	Blue Wren		/
	2613	Black eyed Titmouse Fossil		/
	2614	do do		/
	2615	Crested Pigeon		/
	2616	Varied Graucalus		/
	2617	Chestnut backed Mallee Sk chance		/
	2618	Black tailed Parakeet ^{Sk}		/
	2619	Yellow ninged do ^{Sk}		/
	2620	do do ^{Sk}		/

NATURAL HISTORY OF VICTORIA.

Locality whence obtained.

Donor's Name.

Remarks.

*Swirlana Corner
Murray River*

*Murray and
Darling Scrub*

Museum Number.	Name of Specimen.	Description of the Specimen.	Number of Specimens
2621	Chestnut backed Ground Squirrel <i>Sk</i>		/
2622	Ground Squirrel <i>Sk</i>		/
2623	Piping Crow <i>Sk</i>		/
2624	Bobolink Owl <i>Sk</i>		/
2625	Black back'd Magpie <i>Sk</i>		/
2626	Sleeping Lizard		/
2627	do do		/
2628	Temporal Pouch <i>Sk</i>		/
2629	do do do		/
2630	Crested Pigeon		/
2631	Blue banded Grass parrot		/
2632	Crested Wedge Tail		/
2633	Crested Pigeon		/
2634	do do		/
2635	Kestrel young		/
2636			/
2637			/
2638			/
2639	Blue banded Grass parrot <i>Sk</i>		/
2640	Grey Crow <i>Sk</i>		/

NATURAL HISTORY OF VICTORIA.

Locality whence obtained.

Donor's Name.

Remarks.

*Murray and
Darling Scrubs*

CATALOGUE OF THE MUSEUM OF

Museum Number.	Name of Specimen.	Description of the Specimen.	Number of Specimens
2641	Crested Pigeon	♂	/
2642	Great Horned Owl	♂	/
2643	Manakin		/
2644	Brown cap'd Pomatorhinus		/
2645	do do		/
2646	Blue Wren	Exchanged. See out book. p. 21.	/
2647	Crested Pigeon	♀	/
2648	do do	"	/
2649	Coccyus Parrot	♂	/
2650	do do	♂	/
2651	do do	♂	/
2652	do do	♂	/
2653	do do	♀	/
2654	Banded Wren		/
2655	Black cap'd Tanager		/
2656	Temporal Pomatorhinus	♂	/
2657	do do	♂	/
2658	do do		/
2659	do do	♂	/
2660	Kingbird		/

NATURAL HISTORY OF VICTORIA.

Locality whence obtained.

Donor's Name.

Remarks.

*Murray and
Darling Scrub*

CATALOGUE OF THE MUSEUM OF

Museum Number.	Name of Specimen.	Description of the Specimen.	Number of Specimens.
2561	Kalshuni		/
2562	au		/
2563	au		/
2564	Turpome Pomatomimus <i>ell</i>		/
2565	au au		/
2566	Sacred Hairyon		/
2567	Bookbook Owl		/
2568	Crested Oriole		/
2569	Fossil		/
2570			
2571			
2572	Tunnatt <i>ell</i>		/
2573			
2574			
2575	Miss ofuss Goshawid		/
2576	White granitid Gassid		/
2576	Tunnatt		/
2577	Stainsany elhouse		/
2578	Mossing Eager & ?		/
2579	Long billed Cockaroo <i>ell</i>		/
2580	Black fained Dry bunit &		/

NATURAL HISTORY OF VICTORIA.

Locality whence obtained.

Donor's Name.

Remarks.

Murray and Darling Scrub

Overland corner Murray River

Murray and Darling Scrub

CATALOGUE OF THE MUSEUM OF

Museum Number.	Name of Specimen.	Description of the Specimen.	Number of Specimens
2681	Black tailed Tropicbird	sk	/
2682	Black throated Tropicbird	sk	/
2683	White eyed Wood Swallow	sk	/
2684	White rumped	sk	/
2685	do do do		/
2686	Brown capped Tropicbird		/
2687	Fossil Oysters		50
2688	White eyed Wood Swallow		/
2689	do do		/
2690	White rumped		/
2691	do do		/
2692	Fossil		/
2693	Kalibene	sk	/
2694	Temporal Tropicbird	sk	/
2695	do do	4	/
2696	do do	4	/
2697	Kalibene	4	/
2698	Fossil		/
2699	Tunnass		/
2700	Striped Lizard		/

NATURAL HISTORY OF VICTORIA.

Locality whence obtained.

Donor's Name.

Remarks.

Murray and Darling Scrub

from the limestone cliffs at the Overland Corner Murray River

Overland Corner Murray River

Murray and Darling Scrub

Overland Corner Murray River

CATALOGUE OF THE MUSEUM OF

325

Museum Number.	Name of Specimen.	Description of the Specimen.	Number of Specimens.
2701	Brown cap'd Pomatorhinus f		/
2702	du du		/
2703	du du		/
2704	Western Brown Hawk etc		/
2705	Brown cap'd Pomatorhinus		/
2706	du du		/
2707	Holl &		/
2708	Melospiza		/
2709	Sassia		/
2709	Bronze winged. Pipit		/
2710	Temporal Pomatorhinus		/
2711	Ring tailed Crossbill		/
2712	Leisoe &		/
2713	Black eared Cuckoo f		/
2714	Shining Cuckoo		/
2715	Banded Wren		/
2716	Thin chested Honeycreeper etc		/
2717	Temporal Pomatorhinus		/
2718	du du		/
2719	Temporal Cuckoo		/
2720	du du		/

NATURAL HISTORY OF VICTORIA.

Locality whence obtained.

Donor's Name.

Remarks.

Murray and Darling Scrub

*from Overland Corner
Murray River*

Museum Number.	Name of Specimen.	Description of the Specimen.	Number of Specimens.
27621	Magpie Lark	♂	/
27622	do do	♂	/
27623	Rufous tailed Pardaliparus		/
27624	Magpie tailed Eagle		/
27625	Yellow rumped Parakeet		/
27626	Banded Wren		/
27627	do do		/
27627	Fossil		/
27628	Banded Wren		/
27629	Black cap Tit		/
27629	Red rumped Parakeet	♂	/
27630	Black cap Tit		/
27631	do do		/
27632	Brown red throats		/
27633	Fossil		/
27634	Red bellied Flycatcher		/
27635	Fossil		/
27636	Yellow rumped Parakeet		/
27637	Fossil		/
27638	Yellow rumped Parakeet		/
27639	Fossil	all	/
27640	Red rumped Parakeet	♂	/

NATURAL HISTORY OF VICTORIA.

Locality whence obtained.

Donor's Name.

Remarks.

Murray and Darling Scrub

overland corner

overland corner
Murray River

overland corner
Murray River

overland corner
Murray River

Museum Number.	Name of Specimen.	Description of the Specimen.	Number of Specimens.
27641	Bronze winged Tigeon f		/
27642	Buzgerigar		/
27643	do		/
27644	Banded Wren		/
27645	do do		/
27646	Buzgerigar		/
27647	Brown red throat		/
27648	Chestnut shouered Grass P.		/
27649	Spine crested Honeyeater		/
27650	allumny River Lobsters		30
27651	Yellow throated Tuar Bird		/
27652	Red rumped Parakeet et		/
27653	Buzgerigar f		/
27654			
27655	Crested Oriole		/
27656	do do		/
27657	Fossil		/
27658	do		/
27659	Wood Swallow et		/
27660	ellipticus		/

NATURAL HISTORY OF VICTORIA.

Locality whence obtained.

Donor's Name.

Remarks.

Darling and
Murray Scrub

Murray River

Darling &
Murray Scrub

Darling & Murray
Scrub

Overland Corridor
Murray River

Museum Number.	Name of Specimen.	Description of the Specimen.	Number of Specimens.
2761	Red-numped Parakeet		/
2762	Crested Pigeon <i>all</i>		/
2763	Black cap Titma		/
2764	White Shouldered Campyphaga <i>all</i>		/
2765	<i>du du all</i>		/
2766	Black eared Cuckoo <i>all</i>		/
2767	Yellow throated Tiar Bird		/
2768	Spotted Bower Bird		/
2769	Bronze winged Pigeon <i>f</i>		/
2770	Lantern Honeyeater		/
2771	Varied Graucanus		/
2772	Pied Robin		/
2773	Yellow numped Parakeet		/
2774	<i>du du</i>		/
2775	<i>du du</i>		/
2776	Line checked Honeyeater		/
2777	Spotted billed Tinea		/
2778	Long winged Men <i>all</i>		/
2779	Brown red throated		/
2780	Merona <i>f</i>		/

NATURAL HISTORY OF VICTORIA.

Locality whence obtained.

Donor's Name.

Remarks.

Darling and
Murrey Scrub

CATALOGUE OF THE MUSEUM OF

Museum Number.	Name of Specimen.	Description of the Specimen.	Number of Specimens.
27681	Magpie Lark		/
27682	Red cap'd Robin		/
27683	Varied Graculus		/
27684	Crested Pigeon ♀		/
27685	Crimson bellied Parakeet		/
27686	White fronted Heron		/
27687	Red rumped Parakeet		/
27688	do do		/
27689	Panda Wren		/
27690	do do		/
27691	Red rumped Parakeet		/
27692	Yellow throated Green Bird		/
27693	do do ♀		/
27694	Crested Pigeon ♀		/
27695	Parula Honeyeater		/
27696	Russet backed Thrush		/
27697	Yellow throated Green Bird		/
27698	Trous'd Thrush Tit		/
27699	Brown Tree Creeper ♀		/
27700	Wood Swallow.		/

NATURAL HISTORY OF VICTORIA.

Locality whence obtained.

Donor's Name.

Remarks.

Darling and
Murray Scrub

--	--	--	--

337

VI
VI

6

6

8

8

8

8

8

8

8

8

8

8

8

8

8

8

8

8

8

CATALOGUE OF THE MUSEUM OF

Museum Number.	Name of Specimen.	Description of the Specimen.	Number of Specimens.
2801	Yellow numped Parakeet f		/
2802	do do		/
2803	Varied Graucalus	Exchanged. See out book, p. 21.	/
2804	Restless Flycatcher		/
2805	Sacred Halcyon		/
2806	Brown capped Pomathornis		/
2807	White fronted Honeyeater		/
2808	Peaceful Ground dove	Exchanged - see out book, p. 21.	/
2809	Spotted Power Bird		/
2810	Crested Pigeon f	Exchanged - see out book, p. 21.	/
2811	Red numped Parakeet f		/
2812	Pectoral Rail f		/
2813	Gibbs Pachysephala m		/
2814	Varied Graucalus		/
2815	Tarrulus Honeyeater f		/
2816	Black fronted Gollinet f		/
2817	Spine chested Honeyeater		/
2818	Tarrulus Honeyeater	Exchanged - See out book, p. 21.	/
2819	Little classer Eagle		/
2820	Bungariga		/

NATURAL HISTORY OF VICTORIA.

Locality whence obtained.

Donor's Name.

Remarks.

*Darling and
Murray Scrub*

CATALOGUE OF THE MUSEUM OF

Museum Number.	Name of Specimen.	Description of the Specimen.	Number of Specimens
2821	Crested Oriole		/
2822	Yellow rumped Parakeet		/
2823	Varied Traucalus		/
2824	Black fronted Tostrel f.		/
2825	Gilberts Pachycephala		/
2826	do do		/
2827	do do		/
2828	Panda Wren		/
2829	Crested Oriole all		/
2830	Banded Thick head		/
2831	Yellow ^{throat} African Bird		/
2832	Red rumped Parakeet		/
2833	Varied Traucalus		/
2834	Wood Swallow all		/
2835	Fronted Strike Tit		/
2836	Brown capid Tomattonius		/
2837	Panda thick head		/
2838	Yellow rumped Parakeet		/
2839	Wood Swallow		/
2840	Gilberts Collur isinda		/

NATURAL HISTORY OF VICTORIA.

Locality whence obtained.

Donor's Name.

Remarks.

Darling and
Murray Scrub

CATALOGUE OF THE MUSEUM OF

Museum Number.	Name of Specimen.	Description of the Specimen.	Number of Specimens.
2841	Banded Thick Head.		/
2842	Brown capped Pomatorhinus		/
2843	Pectoral Rail M		/
2844	Black fronted Gallinule		/
2845	do do f		/
2846	Banded Wren		/
2846	Magpie Lark		/
2847	Banded Wren		/
2848	do do		/
2848	Fossil		/
2849	do do		/
2850	Brown Tree Creeper M		/
2851	Spine checked Honeycreeper		/
2852	Fossil		/
2853	Many colored Tarraxus		/
2854	Wood Swallow M		/
2855	Crested Pigeon		/
2856	do do		/
2857	Whiterumped Wood Swallow		/
2858	Fossil		/
2858	Landwary		/
2859	Bee-eater		/
2860	do M		/

NATURAL HISTORY OF VICTORIA.

Locality whence obtained.

Donor's Name.

Remarks.

Darling and
Murray Lakes

Overland Corner
Murray River

Overland Corner
Murray River

347

CATALOGUE OF THE MUSEUM OF

Museum Number.	Name of Specimen.	Description of the Specimen.	Number of Specimens.
	<i>Pandaed Wren</i>		
28 61	Red rumped Parakeet <i>Pandaed men + fossie</i>		1 2
28 62	Crested Pigeon <i>Fossie</i>		1
28 63	Black cap Tit <i>Fossie</i>		1
28 64	White shouldered Campypterus		
	<i>White breasted Swallow</i>		1
28 65	do do		
28 66	<i>Sacred Halcyon</i>		1
28 67	<i>Gibber's Pachycephalus</i>		1
28 68	<i>Pied Robin</i>		1
28 69	<i>Welcome Swallow</i>		1
28 70	<i>Fossie</i>		1
28 71	<i>Resless Flycatcher</i>		1
28 72	<i>Blue tailed Grassparakeet</i>		1
28 73	<i>Black fronted Tattler</i>		1
28 74	<i>do do</i>		1
28 75	<i>Fossie</i>		1
28 76	<i>Crested Pigeon</i>		1
28 77	<i>Fossie</i>		1
28 78	<i>Beccator</i>		1
28 79	<i>Many colored Parakeet</i>		1
28 80	<i>do do do</i>		1

NATURAL HISTORY OF VICTORIA.

Locality whence obtained.

Donor's Name.

Remarks.

Overland corner
Murray River

Overland corner
Murray River

Darling and
Murray Lakes

Overland corner
Murray River

Overland corner
Murray River

CATALOGUE OF THE MUSEUM OF

Museum Number.	Name of Specimen.	Description of the Specimen.	Number of Specimens.
2887	White naped Woodswallow		1
2881	Fossil		1
2882	Many colored Parakeet		1
2883	do do		1
2884	Crested Pigeon		1
2885	Spine crested Honeyeater		1
2886	Spotted Power Bird		1
2887	Fossil		1
2888	Rufous lined Lindoraupus		1
2889	Brown winged Pigeon		1
2890	Quail etc		1
2891	do etc		1
2892	Fossil		1
2893	Peewee etc		1
2894	Brown caped Pomatonimus		1
	Fossil		1
2894	Spine crested Honeyeater		1
	masked Oriole		1
2895	Many colored Parakeet		1
2896	Fossil		1
2897	do		1
2898	do		1
2899	Peewee etc		1
2900	Wedge tailed Eagle		1

NATURAL HISTORY OF VICTORIA.

Locality whence obtained.

Donor's Name.

Remarks.

Overland Corner Murray River

Overland Corner
Murray River

Overland Corner
Murray River

Overland Corner
Murray River

CATALOGUE OF THE MUSEUM OF

Museum Number.	Name of Specimen.	Description of the Specimen.	Number of Specimens.
2901	Beeater all		1
2902	Beeater all		1
2903	Eggs of Owelet Sigisjar		1.
2904	Spin checked Honeyeater?		1
2905	Many colored Parrakeet		1
2906	Emu		1
2907	Emu		1
2908	Bronze winged Pigeon all		1
2909	Leadbeaters Cockatoo &		1
2910	do do all		1
2911	Eggs No 5 + 2 asp <i>Pursholia</i>		12.
2912	Beeater all		1
2913	Blue banded Grassparrot.		1
2914	White eye browed Wood Swallow.		1
2915	Emu		1
2916	Emu		1
2917	Red necked Ground Thrush. Eggs of		1
2918	Red cap Robin. & all		3.
2919	Crested Pigeon		1
2920	Blue Wren		1

NATURAL HISTORY OF VICTORIA.

Locality whence obtained.

Donor's Name.

Remarks.

Darling &
Murray Scrub

CATALOGUE OF THE MUSEUM OF

Museum Number.	Name of Specimen.	Description of the Specimen.	Number of Specimens.
2921	Banded Wren f		1
2922	Blue Wren all Eggs of		1
2923	Cuckoo with white spots in throat		3
2924	Lovely Wren all		1
2925	do do "		1
2926	Swallow Picaenid		1
2927	Swift Hemiproc f		1
2928	Temporal Pomatorhinus		1
2928	Landwang		1
2929	Black fronted Goshawk		1
2930	Gilberts Pachycephalus		1
2931	Crested Pigeon		1
2932	Bronze winged Pigeon		1
2933	Banded Wren		1
2934	Black fronted Goshawk R11588		1
2935	White eared Honeyeater		1
2936	Spine checked do		1
2937	Temporal Pomatorhinus		1
2938	Brown caped Pomatorhinus		5
2939	Crested Pigeon all. Exchanged. See out book p. 21.		1
2940	Crested Pigeon f.		1

NATURAL HISTORY OF VICTORIA.

Locality whence obtained.

Donor's Name.

Remarks.

Darling &
Murray Scrub

CATALOGUE OF THE MUSEUM OF

Museum Number.	Name of Specimen.	Description of the Specimen.	Number of Specimens.
2941	Crested Pigeon		1
2942	Yellow rumped Parakeet		1
2943	Brown Hawk		4
2944	Purser Bird etc		1
2945	Spotted Power Bird		1
2946	White eared Honeyeater		1
2947	Banded Wren		1
2948	Chierona		1
2949	Banded Wren		1
2950	do do		1
2951	Chestnut back'd Shrike Thrush		1
2952	Quail		3
2953	No. 24. Egg. ?		1
2954	Stone Plover		2
2955	Banded Wren		1
2956	Pied Robin		1
2957	Pied Robin		1
2958	Micromis Swallow		8
2959	Egg No 28 of Kingfisher ?		7
2960	Banded Wren		1

NATURAL HISTORY OF VICTORIA.

Locality whence obtained.

Donor's Name.

Remarks.

Darling &
Murray
Island

357

CATALOGUE OF THE MUSEUM OF

Museum Number.	Name of Specimen.	Description of the Specimen.	Number of Specimens
2461	Eggs of White-winged Honeyeater No 29 in paper		54
2462	Brown cap Pouter		1
2463	Garnet Honeyeater Eggs of		1
2464	Chickadee Ground Squirrel No 30 in paper		16
2465	Temporal Pouter		1
2466	Peewee	etc.	1
2467	Banded Wren		1
2468	White-winged Wren	etc.	1
2469	Brown cap Pouter		1
2470	Leadbeaver Cockatoo		1
2471	Crimson-bellied Parakeet		1
2472	Temporal Pouter		1
2473	Antimony		1
2474	Granite Eggs of		1
2475	Black Duck No 32 in paper		25
2476	Sandstone from the Botanic Gardens		1
2477			1
2478			1
2479			1
2480			1

NATURAL HISTORY OF VICTORIA.

Locality whence obtained.

Donor's Name.

Remarks.

This large duck constructs its nest in various ways, on trees, on the ground in a salt bush and ~~near~~ it is even found for about two miles from water into the scrub. The eggs are from 8 to 12 in number.

CATALOGUE OF THE MUSEUM OF

Museum Number.	Name of Specimen.	Description of the Specimen.	Number of Specimens.
2981	Sandstone from the Botanical Gardens		1
1	Eggs of		
2982	Sooty Owl No 33. Porifolia		3.
	Eggs of		
2983	Sulphur Crested Cuckoo No 34. Porifolia		8.
2984	Tipping Crow Thicket No 35. Porifolia		19
2985	Eggs No 38: Porifolia?		2
2986	do " 40. Crested Oriole		7
2987	do " 41. " Porifolia		2
2988	do " 42. " "		2
2989	do " 43 " "		13.
2990	do " 45 " "		10
2991	do " 46 " "		15
2992	do " 48 " "found skins!		12
2993	do " 51 " "		1
2994	do " 52 " "		2
2995	do " 55. Crested Pigeon		4
2996	do " 56 Wood Duck		7
2997	do " 57. White breasted Swallow		16
2998	do " 58 Wilson's Swallow		12
2999	do " 59 Adelaide Parrot?		15
3000.	do " 60 Red rumped "		26
2000.	do " 61 Seal		3

NATURAL HISTORY OF VICTORIA.

Locality whence obtained.

Donor's Name.

Remarks.

This powerful Owl builds her nest in hollow branches of high Eucalypti, only and nest with 3 spotted white eggs were found of rather a round form.

This Cockatoo prepares his nest in the hollow branches of Eucalypti the eggs are pure white

The Eggs of gregarious in his habits } nests were said a large number to with draw the attention of }
and from 5 to 7 in number but } eggs were said to occupy the } the inducer away from their }
it could not be ascertained whether } of birds used to occupy the } Eggs. }
more than one or a single one } he is showing trees flying } The eggs are surrounded of mud, hair }
occupy a nest. Moreover the } to and thro' and making } great etc very thick and long and }
a great noise, apparently } will be buried in the fork of a }
tree (Bon tree). }

Proprietor the gift of Miss
Fletcher of Cape Town.
Darling.

This beautiful Duck constructs its nest in hollow branches of the gum and box trees sometimes at a considerable height and which was taken contained 8 Eggs and a plentiful supply of very soft down.

This little Swallow builds in the River Banks and many nests were found on the banks of the Darling and Murray. A great many contained no eggs though occupied by the birds and I have supposed as many as 9 swallows flying out of these holes. The channel was about 30 in deep and I collected several hoards the end were some gum leaves grass and a few feathers were collected. The eggs are from 5 to 7 in number of a flesh color speckled with dirty brown.

This Swallow is very plentiful near the alkali marshes and there is hardly a bush or the tall grass and some nests might be found.

CATALOGUE OF THE MUSEUM OF

Museum Number.	Name of Specimen.	Description of the Specimen.	Number of Specimens.
<u>List of V</u>			
<u>Specimens preserved in spirits and labeled with lead numbers</u>			
201	Kangaroo Rat Foetus		1
202			
203	Tongue of Spoonbill		1
204	Foetus of Pademelton		1
205	do do		1
206			
207	Little White spotted Snake		1
208	Little River Crawfish Young with tail		1
209			
210	Pink bellied Black Snake		1
211	Foxy banded olive green Snake		1
212	Black headed Snake		1
213	Black Snakes Head		1
214	Two Lizards		2
215	Orange leg ^d Frogs		10
216	fine scaled Glassained Bark Lizard		2
217	6 Unio of the Swamps and Lagoons		6
218	Kreff's Blindworm		1
219	Pink bellied black snake		1
220	Foetus of Kangaroo Rat		1

NATURAL HISTORY OF VICTORIA.

Locality whence obtained.

Donor's Name.

Remarks.

Gumbower February 1857

Gumbower Creek

} Gumbower Creek

mt Hope

Lagoon near
mt Hope

scrub near
New Swamp

Gumbower Creek

CATALOGUE OF THE MUSEUM OF

Museum Number.	Name of Specimen.	Description of the Specimen.	Number of Specimens.
221	100 River Crabs	1 Tray	100
222	1 Box, cony 100 Frogs	4 ^{ditt} spec	100
223	Pink bellied Snake	70 Tray } 100 River Crabs - 1 Box }	170
224	50 Frogs & Lizards	25 young } turtles & Leeches }	83
225	100 Frogs	100 Lymnae	200
226	1 Yellow Key	with Snakes Lizards fishes &c unknown List No. XII supposed to be decayed	—
<hr/>			
forwarded as List No 10 from Mondellumin May 25. 1857.			
227	Toad	C	
228	Edelaide	Egernia Lizard	2
229	Tongue of	Goatsucker	1
230	Lizard	C	1
231	Toad	C	1
232	Frog	M	1
233	Frog	e	1
234			
235			
236	Turtle	A Entrails	1
237	Crawfish	undeveloped young	1
238	Murray	Lobster	1
239	Crawfish		1
240	Murray	Lobster	1

NATURAL HISTORY OF VICTORIA.

Locality whence obtained.

Donor's Name.

Remarks.

New Swansh

Gambowerdreeks

CATALOGUE OF THE MUSEUM OF

Museum Number.	Name of Specimen.	Description of the Specimen.	Number of Specimens.
341	<i>Crabfish</i>		1
342	<i>do</i>		1
343	<i>Toetus of Panau Pandicoot</i>		1
344	<i>Snake I.</i>		1
345	<i>do J</i>		1
346	<i>do I.</i>		1
347	<i>do I</i>		1
348	<i>do A</i>		1
349	<i>do M</i>		1
350	<i>do L</i>		1
351	<i>do D</i>		1
352	<i>do I</i>		1
353	<i>do R boa</i>		1
354	<i>do I</i>		1
355			
356	<i>Lizard A</i>		2
357	<i>do O</i>		2
358	<i>Five Tassle</i>		1
359	<i>do Karm</i>		1
360	<i>Pollugumar</i>		1

NATURAL HISTORY OF VICTORIA.

Locality whence obtained.

Donor's Name.

Remarks.

Mallee Scrubs

367

CATALOGUE OF THE MUSEUM OF

Museum Number.	Name of Specimen.	Description of the Specimen.	Number of Specimens.
\$61	Pumpkin		1
\$62	1 Bottle Frogs 53 ^r		53
\$63	1 Bottle do file 6 th 2. 125 Hulls I. Lizards R.H.M. 31 Bark Lizards F 12 Lizards H.E.		195
\$64	1 Bottle Bark Lizards B th 4. sp. Lizards I 2. N 4 L D 1 sp Fish Ulysses F ^r 15 Murray River to Leach		27
\$65	List of <u>XIII</u> Moulded in July 20 th 1857 (forwarded as List of <u>XII</u>)		
\$66			
\$67	Lizard of Rudimentary Legs		1
\$68			
\$69	Tadpoles of Colubus		1
\$70	Tadpoles of Pinnikin		1
\$71	" " Merri		1
\$72	" " Spassum or 70% of indistinct		1
\$73	Tadpoles of Monca		2
\$74	do " do		3
\$75	do " ^{Kalpenin} ^{Womb} Pinnikin		4
\$76	do . Pinnikin		3
\$77			
\$78			
\$79	do . Pinnikin		1
\$80	do . Moulded in		4

NATURAL HISTORY OF VICTORIA.

Locality whence obtained.

Donor's Name.

Remarks.

Matta Scrubb

The Pouch of the Patulna
contains generally one or
two foetus of a white black
and when a few months old

This animal at a pouch
contains from two to
three foetus

This one seldom two

one or two foetus
in the Pouch.

from two to four
but generally three
foetus in Pouch

Murray Scrub

This animal is not
in captivity and being
forward ~~from~~ 4 years ago
during the months of Septor
Oct.

Matta Scrubb

369

CATALOGUE OF THE MUSEUM OF

Museum Number.	Name of Specimen.	Description of the Specimen.	Number of Specimens
\$81	<i>Doctus of Turnast</i>		/
\$82	<i>Do. Pennikins</i>		3
<u>List to XVII</u>			
\$83	<i>Striped Geemia Lizard</i>	<i>Z</i>	/
\$84	<i>large Carpet Snake</i>	<i>TK</i>	/
\$85			/
\$86			/
\$87			/
\$88			/
\$89			/
\$90			/
\$91			/
\$92	<i>different kinds of New Lizard</i>	O	/
\$93			/
\$94			/
\$95			/
\$96			/
\$97			/
\$98			/
\$99			/
\$100			/

NATURAL HISTORY OF VICTORIA.

Locality whence obtained.

Donor's Name.

Remarks.

Murray Scrub.

This kind Kangaroo
comes generally one
year and in his power

Mallee Scrub

CATALOGUE OF THE MUSEUM OF

Museum Number.	Name of Specimen.	Description of the Specimen.	Number of Specimens.
401	Snake D		1
402	" "		1
403	Lizard G		1
404	Snake ?		1
405	Water Snake h		1
406			
407	Tadpoles of Hellbier		6
408	Lizards G		5
409			
410	Lizard G 1 Bottle No I containing		1
411	Frogs F 1 Bottle No II		53
412	Frogs f " c		16
413	Shells I Lizards R I M do Bark F		2 125 31
414	do Sand H 1 Bottle No III contg		12 9
415	Bark Lizard B " " F " " N		4 2 4
416	" " D Fish Uburank F Snake D		1 15 1
417	Murray River Leach 1 Reserve Bottle No I		1
418	Lizards Snakes 1 Reserve Bottle No II		2
419	Pellybony fishes 1 Reserve Bottle No III		150
420	Pellybony fishes Bark Lizard B & G in case Frogs 5. Lizards 2		150 12 7

NATURAL HISTORY OF VICTORIA.

Locality whence obtained.

Donor's Name.

Remarks.

@ Murray Scrubs

Ab

*The Kelpies or marine cut
brings forth a great number
of young ones and as many
as I have been found in
the pouch of one female. —*

CATALOGUE OF THE MUSEUM OF

Museum Number.	Name of Specimen.	Description of the Specimen.	Number of Specimen
421	New Lizard O		/
117 422			/
113 423	Striped do		/
114 424			/
115 425	Red brown Snake yellow belly J		/
116 426	Carpus Snake K		/
117 427	Brown Snake Orange belly black head P		/
118 428	Murray River Lobster		/
119 429	New Lizard O		/
120 430			/
121 431			/
122 432			/
123 433			/
124 434			/
125 435			/
126 436			/
127 437			/
128 438			/
129 439			/
130 440			/

NATURAL HISTORY OF VICTORIA.

Locality whence obtained.

Donor's Name.

Remarks.

Mallee Scrub

Murray River

Mallee Scrub

I have found a specimen of this
in a deserted hole of
perameles lagotis during the month
of June they do not come out of
the ground before the middle
of September

CATALOGUE OF THE MUSEUM OF

Museum Number.	Name of Specimen.	Description of the Specimen.	Number of Specimens
131 441	Striped Lizard		/
132 442	Sea Lizard	O	/
133 443			/
134 444			/
135 445	Egernia Lizard	R	/
136 446	do		/
137 447	Carpenter Snake	K	/
138 448	do		/
139 449	Striped Lizard		/
140 450	Brown Snake yellow belly scaly on tail not forked	P	/
141 451	Red brown Snake yellow belly & scaly on tail half forked	J	/
142 452	Olive green Snake with red spots tail forked	?	/
143 453	Sea Lizard	O	/
144 454			/
145 455			/
146 456			/
147 457			/
148 458			/
149 459			/
150 460			/

NATURAL HISTORY OF VICTORIA.

Locality whence obtained.

Donor's Name.

Remarks.

*Mallee
Scrub*

CATALOGUE OF THE MUSEUM OF

Museum Number.	Name of Specimen.	Description of the Specimen.	Number of Specimens.
151 461	Sciniped Lizard		1
152 462	Egernia "	} R	1
153 463	do		1
154 464	Foetus of Opossum		1
155 465	do. Pinnikin		1
156 466	Large bank Lizard	O	1
157 467	Small Lizard	} O	1
158 468	do		1
159 469	Egernia Lizard	R	1
160 470	} Small Lizard	O	1
161 471			1
162 472			1
163 473	Lizards Whites Feet?		1
164 474	do		1
165 475	Foetus of Opossum		1
166 476	do " Mousak		1
167 477	do " do		1
168 478	do " Castuck		1
169 479	Pinnikin / Foetus		1
170 480	do do		1

NATURAL HISTORY OF VICTORIA.

Locality whence obtained.

Donor's Name.

Remarks.

Oldall Scrub
and
the Box groves
near
the Murray
River

This is a very tender Lizard
with thick wedge shaped
tail and a number of
elevated spots on the back

CATALOGUE OF THE MUSEUM OF

Museum Number.	Name of Specimen.	Description of the Specimen.	Number of Specimens.
171 241	<i>Amurium with Foetus</i>		/
172 242	<i>Mitchell's Ovis?</i>		/
173 243	<i>do</i>		/
174 244	<i>Moudellmudellum House</i>		/
175 245	<i>do</i>		/
176 246	<i>Little brown Madam Lizard</i>		/
177 247	<i>"</i>		/
178 248	<i>"</i>		/
179 249	<i>"</i>		/
180 250	<i>"</i>		/
181 251	<i>"</i>		/
182 252	<i>"</i>		/
183 253	<i>"</i>		/
184 254	<i>"</i>		/
185 255	<i>"</i>		/
186 256	<i>Agamia Lizard</i>		/
187 257	<i>Striped do</i>		/
188 258	<i>1 Keg containing the following Specimens</i>		
189 259	<i>Different kind of Trays in a Bag</i>		75
190 260	<i>" " " Lizards</i>		130.
190 260	<i>Bung Kahlpen</i>		4.

NATURAL HISTORY OF VICTORIA.

Locality whence obtained.

Donor's Name.

Remarks.

Black tailed Petrel, brings forth
the young ones during the months
of August September and
has been seen as far as its
nest in the Bay.

Manna Scrub

CATALOGUE OF THE MUSEUM OF

Museum Number.	Name of Specimen.	Description of the Specimen.	Number of Specimens.
191 261	Tactus of Moncas		/
192 262	" " Pirikin		/
193 263	Young Kahlper		/
194 264	large black headed Snake		/
195 265	Pillikin		/
196 266	au		/
197 267	au		/
198 268	Pethacke		/
199 269	au		/
200 270	Kahlper		/
201 271		/	
202 272		/	
203 273		/	
204 274		/	
205 275		/	
206 276		/	
207 277		/	
208 278		/	
209 279		/	
210 280	Mon dellun dellun House		/

NATURAL HISTORY OF VICTORIA.

Locality whence obtained.

Donor's Name.

Remarks.

Mallee Scrub

This little animal
nocturnal in its habits
frequents the sandy
ridges in the mallee
scrub. It is very numerous
there and though it has
many enemies as Owls
different ^{other} animals and
the natives; it brings
forth about 4 young ones
which are born blind.
~~and~~ They burrow into
the sand and the native
warren found them easily
by applying a long stick
and ruffling the sand.

CATALOGUE OF THE MUSEUM OF

Museum Number.	Name of Specimen.	Description of the Specimen.	Number of Specimens.
211 281	<i>Little Whip Snake</i>		/
212 282	<i>Little Striped Lizard</i>		/
213 283			/
214 284			/
215 285			/
216 286		<i>Kumany</i>	
217 287			/
218 288	<i>Kalipure</i>		/
219 289	<i>ellondellundellun</i>		/
220 290			/
221 291			/
222 292	<i>Kalipure</i>		/
223 293	<i>Bat</i>		/
224 294	<i>Kalipure</i>		/
225 295	<i>Striped Lizard</i>		4
226 296	<i>Thru said do Jeevo?</i>		/
227 297	<i>ellunny fish</i>		/
228 298	<i>do</i>		/
229 299	<i>Dark Lizard</i>		/
230 300	<i>Ground Lizard with long tail</i>		/

NATURAL HISTORY OF VICTORIA.

Locality whence obtained.

Donor's Name.

Remarks.

Murray Scrubs

This little blained swallow
thru the European species is
never above dark on the
banks of the Murray and in
the sunnier dry Scrubs.

Mallee
Scrubs

Murray River

CATALOGUE OF THE MUSEUM OF

Museum Number.	Name of Specimen.	Description of the Specimen.	Number of Specimens.
231 301	Ground Lizard ^{with} long tail		1
232 302	Small Lizard		6
233 303	Frogs		4
234 304	Kumany		4
235 305	long tailed Bark Lizard		5
236 306	diff kind of do		20
237 307	" " " Frogs		13
238 308	Sea Lizard		1
239 309		1	
240 310		1	
241 311		1	
242 312		#	
243 313	Lizard		2
244 314	Tooths of Mouscat		4
245 315			
246 316	Sea Lizard		1
247 317			
248 318	Sea Lizard		1
249 319	Shill		1
250 320	Small Lizard		1

NATURAL HISTORY OF VICTORIA.

Locality whence obtained.

Donor's Name.

Remarks.

Mallee Scrub

Murray River

Mallee Scrub

Mallee Scrub

Mallee Scrub

Mallee Scrub
Corymbium macleod
Grass in the Scrub

CATALOGUE OF THE MUSEUM OF

Museum Number.	Name of Specimen.	Description of the Specimen.	Number of Specimens.
251 321	Egernia Lizard		/
252 322			/
253 323	du du		/
254 324	Mallee du		/
255 325			/
256 326			/
257 327			/
258 328			/
259 329			
260 330	Mallee du		/
261 331			/
262 332			/
<i>List No XVIII</i>			
263 333		<i>See museum book for square hole</i> Brown snake yellow belly red stripes on back tail half forked	/
264 334		light olive green snake tail forked yellow belly red spots	/
265 335	Carpet Snake		/
266 336	Kestric f		/
267 337	Mongoose f		/
268 338	Carpet Snake		/
269 339	Mallee Lizard	very long tail red belly	/
270 340	Mallee Snake	orange belly tail not forked	/

Waller Scrub

CATALOGUE OF THE MUSEUM OF

Museum Number.	Name of Specimen.	Description of the Specimen.	Number of Sp.
271	Pattuck & Taetus		/
272	Young Pirikin		/
273	Long tailed Lizard		/
274	Taetus of Opssum		/
275	2 young Pirikins		/
276	} Warrubur Juekus in a Bottle		/
277			/
278	Slang tailed striped Lizards	List No. XX	/
	1 African Turkey painted blue		
279	Taetus of Turass		/
280	Pattuck &		/
281	Murray River Lobster		/
282	Carpet Snake		/
283	Murray River Lobster		/
284	Slane Lizard long tail		/
285	Sea Lizards		6
286	Murray Lobster		/
287	Young Kullarr		/
288	Mondellundellum		/
289	do		/
290	do		/

NATURAL HISTORY OF VICTORIA.

Locality whence obtained.

Donor's Name.

Remarks.

Mallee Scrub

This curious animal burrows into the ground but is not like the *Peromyscus gregarius* in its habit. The natives are very expert in dislodging it and it is most astonishing to see the quantity of earth removed by ~~them~~ the *Peromyscus* to this object. ~~It~~ *It* occurred two with ~~two~~ *two* *Taclus* each in the pouch.

Mallee Scrub

Murray River

Murray River

Murray River

Mallee Scrub

CATALOGUE OF THE MUSEUM OF

Museum Number.	Name of Specimen.	Description of the Specimen.	Number of Specimens
291	<i>Monodellum dellum</i>		1
292	Warum mit 8 Foculis		1
293	<i>Monodellum dellum</i>		1
294	do		1
295	do		1
296	<i>Monodellum dellum</i>		1
297	do		1
298	do		1
299	do		1
300	Stalle Lizard M		5
301	do do C		1
302	do do M		1
303	Stalle Lizard H		2
304	do do M		1
305	Bat		1
306	Stalle Lizard H		2
307	do do I		5
308	Landwanz tinctus		1
309	Lizard M		1
310	Bat		1

NATURAL HISTORY OF VICTORIA.

Locality whence obtained.

Donor's Name.

Remarks.

Mallee Scrub

do

This little tree mouse was caught in a hollow log. it is marsupial and its pouch contained 8 foetus's

do

do

Two of these pouches were found in the pouch of the female Chaeropus

CATALOGUE OF THE MUSEUM OF

Museum Number.	Name of Specimen.	Description of the Specimen.	Number of Specimens.
341	Lizard M		/
342	do J Secks?		/
343	Pirritia		/
344	Lizard A		/
345	do H		/
346	do H		/
347	Mondellum dellum		/
348	Lizard C		/
349	do M		/
350	do C		/
351	do H		/
352	Toad G		/
353	Mondellum dellum		/
354	Striped Lizard J		/
355	Lizard with ribbed back		/
356	Snake with rudimentary feet		/
357	Striped Lizard out of egg		/
358	Snake S		/
359	Lizard w/ rudimentary feet		/
360	Young Pirritia		/

NATURAL HISTORY OF VICTORIA.

Locality whence obtained.

Donor's Name.

Remarks.

Mallee Scrub

CATALOGUE OF THE MUSEUM OF

Museum Number.	Name of Specimen.	Description of the Specimen.	Number of Specimens.
331	Snake S		1
332			+
333			+
334	Snake Z		1
335	" O		1
336			+
337			+
338	Lizard with rudimentary feet		1
339			+
340	Toad A		1
341	Lizard with rudimentary feet		1
342	Lizard with 2 black stripes on sides		1
343	Lizard with rudimentary feet		1
344	do H		1
345	Striped Lizard young		1
346			
347			
348			
349			
350	Toad B		1

NATURAL HISTORY OF VICTORIA.

Locality whence obtained.

Donor's Name.

Remarks.

Lagoon near the
Murray

Murray Scrub

Lagoon near the
Murray

CATALOGUE OF THE MUSEUM OF

Museum Number.	Name of Specimen.	Description of the Specimen.	Number of Specimens.
381	<i>Red rumped Passogate</i>		1
382	<i>Lizard I.</i>		1
383			
384			
385			
386			
387	<i>Landwang foetus</i>		1
388	<i>Warum</i>		1
389			
390			
391			
392			
393			
394			
395			
396	<i>Landwang foetus</i>		1
397			
398			
399			
400	<i>Landwang foetus</i>		1

NATURAL HISTORY OF VICTORIA.

Locality whence obtained.

Donor's Name.

Remarks.

} Mallee Scrub

This is a very rare animal even a few specimens of it were obtained through the Natives

CATALOGUE OF THE MUSEUM OF

Museum Number.

Name of Specimen.

Description of the Specimen.

Number of Specimens.

- 101
- 102
- 103
- 104
- 105
- 106
- 107
- 108
- 109
- 110
- 111
- 112
- 113
- 114
- 115
- 116
- 117
- 118
- ~~119~~
- 120

389

Snake A

401

CATALOGUE OF THE MUSEUM OF

Museum Number.	Name of Specimen.	Description of the Specimen.	Number of Specimens.
121			
122			
123			
124			
125			
126			
127			
128			
129			
130			
131			
132			
133			
134			
135			
136			
137			
138			
139			
140			

CATALOGUE OF THE MUSEUM OF

Museum Number.	Name of Specimen.	Description of the Specimen.	Number of Specimens.
141			
142			
143			
144			
145			
146			
147			
148			
149			
150			
151			
152			
153			
154			
155			
156			
157			
158			
159			
160			

405

CATALOGUE OF THE MUSEUM OF

Museum Number.	Name of Specimen.	Description of the Specimen.	Number of Specimens.
161			
162			
163			
164			
165			
166			
167			
168			
169			
170			
171			
172			
173			
174			
175			
176			
177			
178			
179			
180			

407

CATALOGUE OF THE MUSEUM OF

Museum
Number.

Name of Specimen.

Description of the Specimen.

Number of Specimens.

181

182

183

184

185

186

187

188

189

190

191

192

193

194

195

196

197

198

199

200

409

CATALOGUE OF THE MUSEUM OF

Museum Number.	Name of Specimen.	Description of the Specimen.	Number of Specimens.
201			
202			
203			
204			
205			
206			
207			
208			
209			
210			
211			
212			
213			
214			
215			
216			
217			
218			
219			
220			

CATALOGUE OF THE MUSEUM OF

Museum Number.	Name of Specimen.	Description of the Specimen.	Number of Specimens.
221			
222			
223			
224			
225			
226			
227			
228			
229			
230			
231			
232			
233			
234			
235			
236			
237			
238			
239			
240			

