

# Queensland State School Reporting – 2011

## Merrimac State High School (2147)



Postal address	Q Supercentre PO Box 5610 Mermaid Waters 4218
Phone	(07) 5595 8666
Fax	(07) 5595 8600
Email	the.principal@merrimacshs.eq.edu.au
Webpages	Additional reporting information pertaining to Queensland state schools is located on the <a href="#">My School</a> website and the Department's <a href="#">Right to Information site</a> .
Contact Person	Principal's Personal Assistant <a href="http://www.merrimacshs.eq.edu.au">www.merrimacshs.eq.edu.au</a>

### Principal's foreword

#### Introduction

It is with pride that I present the Merrimac State High School Annual Report for 2011.

This report outlines the significant achievements made by the school's students and staff.

I would like to specifically highlight that:

- 92% of parents report their child is happy to go to this school
- 83% of parents believe Merrimac SHS is a good school

The school's motto of "Pride in Excellence" is the driving force behind our quest for constant improvement. While the above data highlights a very successful school, we have identified further areas of improvement which will be the focus for 2012.

Chris Tobin  
Principal

#### School progress towards its goals in 2011

The school set specific improvement targets for the 2011 school year. The first target was to have 95% of students achieving an above C for the subject level of achievement. The school attained 86.6% of students with above C for achievement and while this result did not reach our goal, it did show improvement of 3% from our 2010 achievement of 83.6%. We have always understood the 95% achievement benchmark was ambitious and would take some years to achieve.

The school also aspired to have our results greater than the National mean in the areas of NAPLAN. Our school mean now measures the same as the Australian mean. Our writing mean is above the Australian mean.

The school has continued to monitor the classroom behaviour and has defined the processes to ensure teachers can devote the maximum amount of time to teaching.

#### Future outlook

Merrimac SHS has developed a strategic plan that guides our direction for the next four years. On a yearly basis we develop an Operational Plan that sets our targets and goals for the year. While we have a number of specific targets we will be working towards in 2011 our four main goals are:

- To increase to 95% the A, B & C results across all subjects.

# Queensland State School Reporting – 2011

## Merrimac State High School (2147)



- To have 100% completion of VET Certificates.
- School's mean will be greater than the National mean in all measuring.

## School Profile

**Coeducational or single sex:** Coeducational

**Year levels offered:** Year 8 - Year 12

**Total student enrolments for this school:**

Total Enrolment	Girls	Boys	Enrolment Continuity (Feb 2011 – Nov 2011)
1230	590	640	88%

## Characteristics of the student body:

Merrimac State High School provides high quality education for 1300 male and female students from Years 8 to 12. Our student population is very diverse with over 38 nationalities being represented in the cohort. This diversity, combined with our highly regarded international student program, gives the school a global perspective.

The entire five year program of learning is designed to deliver graduating students an outcome of high academic achievement, entrance into TAFE or other learning opportunities, an apprenticeship or traineeship or entry to the workforce.

Many students by-pass their local high school to attend Merrimac State High School. We are the school of choice for students and parents who are looking for an education that combines learning, care and social development as a total package. Total student enrolments for this school:

## Class sizes – Proportion of school classes achieving class size targets in 2011

Phase	Average Class Size
Year 4 – Year 10	24.3
Year 11 – Year 12	17.9
All Classes	21.5

## School Disciplinary Absences

Disciplinary Absences	Count of Incidents
Short Suspensions - 1 to 5 days	354
Long Suspensions - 6 to 20 days	12
Exclusions	9
Cancellations of Enrolment	8

## Curriculum offerings

### Our distinctive curriculum offerings

Merrimac values our quality learning environment which inspires and motivates individuals to perform to their full potential.

#### Middle School

The Year 8 curriculum is designed around engaging students within 8 Key Learning Areas (KLAs). These KLAs are English, Mathematics, Science, Social Sciences, The Arts, Technology, Languages and Health and Physical Education. Within each KLA, student learning is designed, delivered, assessed and reported against Essential Learnings to be completed by the end of Year 9. The Year 9 curriculum design flows seamlessly from Year 8, continuing to address the Essential Learnings through 8 Key Learning Areas. Within Year 9, students begin to influence their own learning through limited selection of courses within some of the KLAs.

#### Senior School

Year 10 is the first year of senior schooling. Whilst providing greater choice for each student, Year 10 subject offerings are designed to prepare student for Year 11 and 12. In Year 10 students study subjects for one full year.

Distinctive curriculum offerings occur in:

Drama	Graphics
Dance	Engineering - Cert I
Music	Doorways to Construction (2yr course)
Visual Art	Industrial Technology and Design
Photo and Digital Imaging	Chinese
Get into IT	Japanese
Professional Business Studies	Mathematics
Open 4 Business	Mathematics Foundation
Business Information Technology	Mathematics Extension
English	Science
English Extension – Literature	History
English Communication	Economics
Fashion Studies	Geography
Early Childhood Studies	Health and Physical Education
Hospitality Practices	Physical Education Excellence

#### Year 11 and 12

In Year 11 and 12 students study 6 subjects over two years. Students are able to choose these subjects based on their specific pathway to employment, Vocational Education and Training and tertiary study beyond Year 12. Subjects in Year 11 and 12 are delivered aligned with pathway options for students. *Authority subjects* are designed for those students intending to engage in tertiary study beyond Year 12. *Authority registered* subjects are designed toward nationally recognised Vocational Education and Training qualifications toward gaining apprenticeships, traineeships and cadetships, as well as full time employment.

#### Authority

Accounting

#### Authority Registered and Vocational Certificates

Certificate I & II in Business

## Our school at a glance

Ancient History	Creative Arts – Visual Arts Studies
Biological Science	Certificate III in Children's Services
Business Communication and Technologies	English Communication
Chemistry	Fashion Studies
Chinese	Certificate II   Hospitality Operations
Dance	Certificate I in General Construction
Drama	Certificate I in Engineering (Metal)
Visual Arts	Media Studies
Economics	Certificate II in Information Technology
English	Marine and Aquatic Practices
English Extension - Literature	Certificate I in Retail
English for ESL Learners	Prevocational Mathematics
Geography	Recreation Studies
Graphics	Certificate II in Tourism
Information Processing and Technology	Certificate I in Work Education
Japanese	Certificate I in Work Readiness
Legal Studies	Science in Practice
Marine Studies	Industrial Technology and Design
Mathematics A	
Mathematics B	
Mathematics C	
Modern History	
Multistrand Science	
Music	
Music Extension (Performance)	
Physical Education	
Physics	
Philosophy and Reason	

## Extra curricula activities

Duke of Edinburgh Award	Year level Learning Camps
School Musical	Snow Trip
Instrumental Music	Debating
Interschool Sport	Putting Youth in the Picture

## How Information and Communication Technologies are used to assist learning

All students from Years 9 – 12 have been allocated a laptop to support their learning. 90% of these students have opted to enter into the Take Home Program that gives students 24/7 access to the laptop computer.

Teachers are changing the way they teach to take advantage of the technology and what it has to offer.

The students are now provided with a large proportion of their work in a “OneNote” format that allows them to have instant access to learning materials while providing a tool to record their own work and understanding.

Staff have undertaken the ‘Symphony’ training and are using their new skills to improve their teaching practices.

## Social climate

The school has an extensive network of support staff who cater for the diverse needs of students. Our support staff comprises a Guidance Officer, School Nurse, Industry Liaison Officer, School Chaplain, Youth Support Co-ordinator, Youth Pathways Officer and Indigenous Liaison Officer.

The school has invested heavily in prevention and intervention in regard to bullying. The school has worked closely with its Peer Mentors in supporting the Year 8 transition to high school.

The school has also worked on training staff to implement the “Putting Youth in the Picture” program for our Year 11 and 12 students.

We are proud of our Special Education Program that supports 59 students to work in mainstream classrooms and grows and develops the individual talents of every child.

## Parent, student and teacher satisfaction with the school

Performance measure	Result 2011
Percentage of parents/caregivers satisfied that their child is getting a good education at school	71%
Percentage of students satisfied that they are getting a good education at school	54%
Percentage of parents/caregivers satisfied with their child’s school	83%
Percentage of school workforce satisfied with access to professional development opportunities that relate to school and systemic initiatives	58%
Percentage of staff members satisfied with morale in the school	65%

# Our school at a glance

## Involving parents in their child's education

The staff at Merrimac State High School understand the important part parents play in supporting the education of their children. The school encourages and welcomes parent involvement at the school through activities such as:

- Parent/Teacher Interviews
- Induction programs for Year 8 Students/Parents
- Focus Group Meetings
- School musical and other performances
- Subject Selection Evenings
- Sports Awards Evening
- Presentation Night
- Parents and Citizens Association
- The school canteen

## Reducing the school's environmental footprint

Data is sourced from school's annual utilities return and is reliant on the accuracy of these returns.

The school is ever aware of our environmental footprint. The school has invested in solar power, rainwater tanks to supply the pool, energy efficient lighting and recycled printing supplies

Environmental footprint indicators, 2010-2011

	Electricity KwH	Water KL
2011	430,448	3,519
2010	801,741	10,387
% change 10 - 11	-46%	-66%

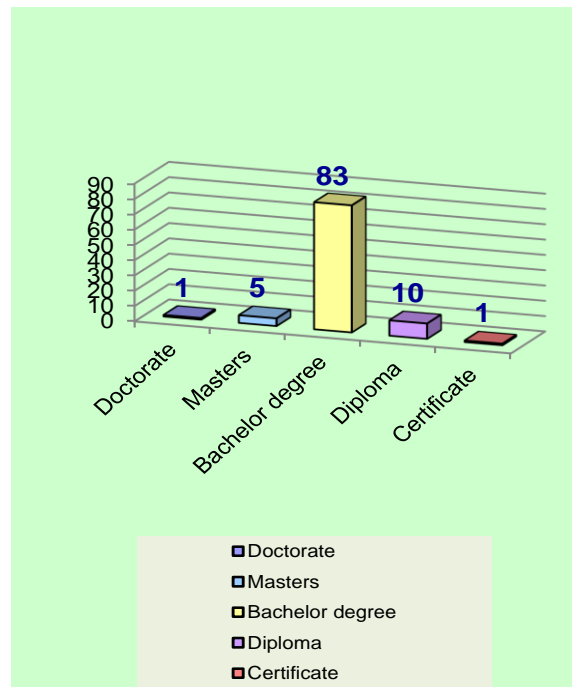
# Our staff profile

## Staff composition, including Indigenous staff

Workforce Composition	Teaching Staff	Non-teaching Staff	Indigenous Staff
Headcounts	100	47	<5
Full-time equivalents	94	33	<5

## Qualifications of all teachers

Highest level of attainment	Number of classroom teachers and school leaders at the school
Doctorate	1
Masters	5
Bachelor degree	83
Diploma	10
Certificate	1





## Our staff profile

### Expenditure on and teacher participation in professional development

The total funds expended on teacher professional development in 2011 was \$31,062.98

The major professional development initiatives are as follows:

Literacy – In depth training for staff

Senior secondary program writing and moderation with the Queensland Studies Authority.

Implementation of the Australian Curriculum and the further development of the curriculum to the classroom resources.

### Average staff attendance

For permanent and temporary staff and school leaders, the staff attendance rate was 95% in 2011.

### Proportion of staff retained from the previous school year

From the end of the previous school year, 96% of staff was retained by the school for the entire 2011 school year.

### School income broken down by funding source

School income broken down by funding source is available via the My School website at <http://www.myschool.edu.au/>.

To access our income details, click on the *My School* link above. You will then be taken to the *My School* website with the following 'Find a school' text box.

**Find a school**

Search by school name

Search by suburb, town or postcode

Sector  Government  
 Non-government

Where it says 'Search by school name', type in the name of the school you wish to view, and select '<GO>'. Read and follow the instructions on the next screen; you will be asked to accept the **Terms of Use** and Privacy Policy before being given access to the school's My School entry web page.

School financial information is available by selecting '**School finances**' in the menu box in the top left corner of the school's entry web page. If you are unable to access the internet, please contact the school for a paper copy of income by funding source.

# Performance of our students

## Key student outcomes

### Student attendance - 2011

The overall attendance rate for the students at this school (shown as a percentage) in 2011 was 91%.

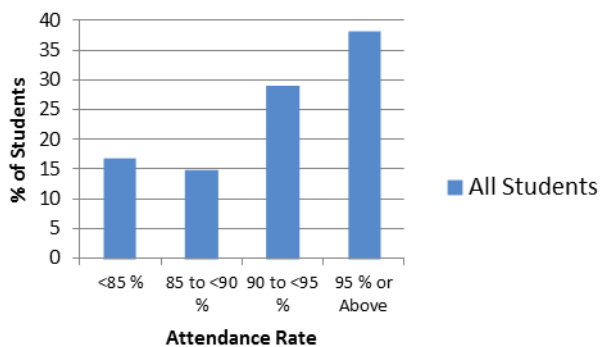
The overall attendance rate for all Queensland state Secondary schools over the same period was 89%.

### Student attendance rate for each year level

Year 8	Year 9	Year 10	Year 11	Year 12
92%	91%	88%	90%	92%

### Student Attendance Distribution

The proportions of students by attendance range.



### Description of how non-attendance is managed by the school

Non-attendance is managed in state schools in line with the DET policies, SMS-PR-029: Managing Student Absences and SMS-PR-036: Roll Marking in State Schools, which outline processes for managing and recording student attendance and absenteeism.

Merrimac SHS strongly supports the government's policy "Every Day Counts". As such we have put in place extra effort to promote students being at school every day. The school takes class rolls every lesson every day. We text message parents by 9.30am each day if their son/daughter has missed the first roll mark. Additionally, we have a well documented process where teachers check if a student misses a lesson. If a student has truanted a lesson during the day, parents are informed by letter and the student is expected to undertake an after school detention. Parents are also sent fortnightly letters if their teenager has unexplained absences.

### National Assessment Program – Literacy and Numeracy (NAPLAN) results – our reading, writing, spelling, grammar and punctuation, and numeracy results for the Years 3, 5, 7 and 9.

Our reading, writing, spelling, grammar and punctuation, and numeracy results for the Years 3, 5, 7 and 9 are available via the My School website at <http://www.myschool.edu.au/>.

To access our NAPLAN results, click on the *My School* link above. You will then be taken to the *My School* website with the following 'Find a school' text box.

# Performance of our students

**Find a school**

Search by school name

Search by suburb, town or postcode

Sector  Government  
 Non-government

Where it says 'Search by school name', type in the name of the school whose NAPLAN results you wish to view, and select <GO>.

Read and follow the instructions on the next screen; you will be asked to accept the **Terms of Use** and Privacy Policy before being able to access NAPLAN data.

If you are unable to access the internet, please contact the school for a paper copy of our school's NAPLAN results.

## Apparent retention rates Year 10 to Year 12.

Year 12 student enrolment as a percentage of the Year 10 student cohort. 75%

## Outcomes for our Year 12 cohort of 2011

Number of students receiving a Senior Statement.	183
Number of students awarded a Queensland Certificate Individual Achievement.	0
Number of students receiving an Overall Position (OP).	53
Number of students who are completing/continuing a School-based Apprenticeship or Traineeship.	32
Number of students awarded one or more Vocational Educational Training qualifications.	152
Number of students awarded an Australian Qualification Framework (AQF) Certificate II or above.	102
Number of students awarded a Queensland Certificate of Education at the end of Year 12.	137
Number of students awarded an International Baccalaureate Diploma (IBD).	0
Percentage of OP/ IBD eligible students with OP 1-15 or an IBD.	75%
Percentage of Year 12 students who are completing or completed a SAT or were awarded one or more of the following: QCE, IBD, VET qualification.	98%
Percentage of Queensland Tertiary Admissions Centre (QTAC) applicants receiving an offer.	100%

# Performance of our students

## Overall Position Bands (OP)

Number of students in each Band for OP 1 to 25.

OP 1-5	OP 6-10	OP 11-15	OP 16-20	OP 21-25
8	16	16	9	4

## Vocational Educational Training qualification (VET)

Number of students awarded certificates under the Australian Qualification Framework (AQF).

Certificate I	Certificate II	Certificate III or above
136	87	36

Our school offers an extensive range of Certificate courses for our students. Outlined below is the range of Certificate I programs on offer and the number of students undertaking the study.

Certificate I Retail – 4

Certificate I Work Readiness – 6

Certificate I Construction - 24

Certificate I Business - 25

Certificate I Information Technology – 225

Certificate I Engineering - 37

## Post-school destination information

At the time of publishing this School Annual Report, the results of the 2011 Year 12 post-school destinations survey, *Next Step – Student Destination Report* for the school were not available. Information about these post-school destinations of our students will be incorporated into this Report in September.

# NEXT STEP 2012 STUDENT DESTINATIONS Merrimac State High School



## Introduction

This report is based on the findings of the Queensland Government *Next Step* survey, which targeted all students who completed Year 12 and gained a Senior Statement in 2011, whether they attended a government, Catholic or independent school, or a TAFE secondary college. The Office of the Government Statistician conducted the survey between April and May 2012, approximately six months after the young people left school. Responses were collected via computer-assisted telephone interviewing and an online survey.

The state-wide and regional reports of the *Next Step* survey can be located at the *Next Step* website at [www.education.qld.gov.au/nextstep](http://www.education.qld.gov.au/nextstep)

## Response rate for Merrimac State High School

Table 1 below reports the response rate for Merrimac State High School. It expresses the number of respondents from this school, as a percentage of all Year 12 completers attending Merrimac State High School in 2011.

It has not been possible to ascertain how representative these responses are of all students at this school.

**Table 1 Survey response rate**

Number of respondents	Number of students who completed Year 12	Response rate (%)
145	187	77.5

## Definitions of main destinations

The pathways of Year 12 completers were categorised into ten main destinations. Respondents who were both studying and working were reported as studying for their main destination. A table defining these categories can be found in the state-wide report at [www.education.qld.gov.au/nextstep](http://www.education.qld.gov.au/nextstep)

## Summary of findings

In 2012, 60.0 per cent of young people who completed Year 12 at Merrimac State High School in 2011 continued in some recognised form of education and training in the year after they left school.

The most common study destination was university (34.5 per cent). The combined VET study destinations accounted for 25.5 per cent of respondents, including 20.7 per cent in campus-based VET programs, with 15.9 per cent of Year 12 completers entering programs at Certificate IV level or higher.

4.8 per cent commenced employment-based training, either as an apprentice (1.4 per cent) or trainee (3.4 per cent).

In addition to the above study destinations, a further 4.8 per cent of respondents from this school deferred a tertiary offer in 2012 (deferrers are shown in Figure 1 in their current destination).

40.0 per cent did not enter post-school education or training, and were either employed (29.0 per cent), seeking work (9.7 per cent) or neither studying nor in the labour force (1.4 per cent).

**Figure 1 Main destinations of Year 12 completers**

