



WOMEN'S WEEKLY RELEASE

Pete Souris
Assistant Commissioner
for Public Relations
Hockey East Association
 591 North Ave – #2
 Wakefield, MA 01880
 Office: (781) 245-2122
 Cell: (603) 512-1166
 psouris@HockeyEastOnline.com

www.HockeyEastOnline.com

FOR IMMEDIATE RELEASE: MONDAY, JANUARY 3, 2011

WEEKLY RELEASE #12

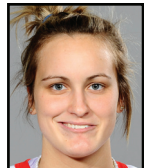
PROVIDENCE EDGES MAINE; VERMONT SWEEPS SERIES AT UNION ~ Boston U. blanks Brown; Northeastern takes out St. Cloud ~



PURE HOCKEY PLAYER OF THE WEEK

#10 JENNIFER FRIEDMAN, PROVIDENCE (Junior Defenseman; San Gabriel, Calif.)

Friedman tallied a goal and an assist in Sunday's 2-1 win at Maine. She finished the game with a +2 rating for the Friars.



PRO AMBITIONS ROOKIE OF THE WEEK

#29 MARIE-PHILIP POULIN, BOSTON U. (Freshman Forward; Beauceville, Que.)

Poulin recorded one goal and two assists in the Terriers' 4-0 win over Brown on Sunday afternoon.



WHEA DEFENSIVE PLAYER OF THE WEEK

#30 KELCI LANTHIER, VERMONT (Sophomore Goaltender; Mt. Airy, Md.)

Lanthier stopped 52 of 54 shots (.963 save%) for the Catamounts, as she earned her first two collegiate wins sweeping a two-game series at Union.



WHEA TEAM OF THE WEEK

VERMONT CATAMOUNTS

The Catamounts completed a weekend sweep of Union of Sunday with a 3-1 victory, after a 2-1 win on Saturday. Vermont's penalty kill was a perfect 7-for-7 on the weekend.

2010-2011 WHEA STANDINGS

Rk.	Team	GP	W	L	T	Pts	Overall	Conf. Off.	Conf. Def.
1.	Boston College	9	6	1	2	14	11-3-4	2.89 (26)	1.22 (11)
2.	Boston University	9	5	1	3	13	15-2-3	2.78 (25)	1.56 (14)
3.	Providence	8	5	2	1	11	14-5-1	2.75 (22)	2.13 (17)
4.	Northeastern	9	3	3	3	9	11-5-4	2.00 (18)	1.67 (15)
	Connecticut	9	4	4	1	9	7-12-1	1.33 (12)	2.00 (18)
6.	Maine	8	2	4	2	6	8-8-4	1.88 (15)	2.13 (17)
	Vermont	11	1	6	4	6	4-8-8	1.27 (14)	2.45 (27)
8.	New Hampshire	9	2	7	0	4	9-10-0	1.22 (11)	2.67 (24)

RECENT RESULTS
Friday, December 31
 at Princeton 3, No. 6 Boston College 0

Saturday, January 1
 Vermont 2 at Union 1
 Wisconsin 7 vs. No. 10 Northeastern 2 (at SCSU)
 at Dartmouth 9, Connecticut 2

Sunday, January 2
 No. 9 Providence 2 at Maine 1 *
 No. 3 Boston U. 4 at Brown 0
 Vermont 3 at Union 1
 No. 10 Northeastern 2 at St. Cloud State 1
 at Dartmouth 5, Connecticut 0

UPCOMING GAMES
Monday, January 3
 Providence at Maine * (2pm)
 Boston College at Yale (7pm)

Friday, January 7
 North Dakota at Vermont (7pm)

Saturday, January 8
 Boston College at Maine * (7pm)
 North Dakota at Vermont (4pm)
 Robert Morris at Connecticut (1pm)

Sunday, January 9
 Providence at Boston U. * (3pm)
 Northeastern at New Hampshire * (2pm)
 Robert Morris at Connecticut (1pm)

All game times are EST
 * denotes league games

THE 9TH ANNUAL WHEA
 CHAMPIONSHIP TOURNAMENT



MARCH 5-6, 2011
 at the highest remaining seed
 For more information visit
www.hockeyeastonline.com

HOCKEY EAST WEEKLY TOP PERFORMERS

Maggie Brennolt (Fr., F, Hawthorn Woods, Ill.) Notched her first collegiate goal and added an assist in a loss to No. 2 Wisconsin.

Corinne Buie PC (Fr. F, Edina, Minn.) Scored the game's first goal in Sunday's 2-1 win at Maine, her seventh goal of the season.

Siena Falino, NU (So., F, Centerport, N.Y.) Had three assists over the weekend, including two against No. 2 Wisconsin.

Alissa Fromkin, BU (So., G, Manhasset, N.Y.) Turned aside all 14 shots faced as she earned her first career shutout in a 4-0 win over Brown.

Dominique Goutsis, Maine (Jr., F, Coquitlam, B.C.) Scored Maine's lone goal against Providence on Sunday.

Dani Rylan, NU (Gr., F, Tampa, Fla.) Scored her first collegiate goal was the game-winning tally in a 2-1 victory at St. Cloud State on Jan. 2.

Florence Schelling, NU (Jr., G, Oberengstringen, Switzerland) Made a season-high 39 saves in a 2-1 win at St. Cloud State on Jan. 2.

CAREER FIRSTS/MILESTONES/WHO'S HOT?

BOSTON UNIVERSITY TERRIERS
ARE 7-0-0 AGAINST ECAC HOCKEY TEAMS IN 2010-11

CHRISTINA ENGLAND PC (WAREHAM, MASS.)
MADE 12 SAVES EN ROUTE TO HER FIRST CAREER VICTORY SUNDAY AT MAINE

DOMINIQUE GOUTSIS, MAINE (COQUITLAM, B.C.)
HAS A THREE GAME POINT STREAK, WITH GOALS IN HER LAST TWO

JEAN O'NEILL, PC (STRAFFORD, PA.)
ADDED AN ASSIST IN SUNDAY'S WIN AT MAINE FOR HER 60TH CAREER POINT

MARIE-PHILIP POULIN, BU (BEAUCVILLE, QUE.)
IS ON A SIX-GAME POINT-SCORING STREAK (5G,7A)

ARMY ROTC THREE STARS AWARD

At the conclusion of each Hockey East league game, the Hockey East "Army ROTC Three Stars of The Game" are selected. Here are the leaders for the 2010-2011 season to date.

Rk.	Name	Cl.	Pos.
1.	Kelli Stack, BC	Sr.	F
2.	Alexandra Garcia, UConn	Jr.	G
	Jenn Wakefield, BU	Jr.	F
	Katie Bacon, PC	So.	F
5.	Florence Schelling, NU	Jr.	G
6.	Kristina Lavoie, UNH	So.	F
	Brittany Ott, Maine	So.	G
	Mary Restuccia, BC	Jr.	F



TEAM NOTES

Boston College: Boston College finished 2010 with a 11-3-4 record...The Eagles faced the Tigers without five players, which included: Kelli Stack, Molly Schaus, Blake Bolden, Meagan Mangene, and Taylor Wasylk participated in the USA Hockey Women's Holiday Camp in Blaine, Minn...Kiera Kingston made 24 saves in the loss to Princeton...BC will return to action on Monday, January 3 at Yale.

Boston University: The No. 3 Boston University women's ice hockey team blanked Brown, 4-0, on Sunday afternoon for its third shutout in the last four games...With the win, the Terriers secured a program-best seven-game winning streak...BU improved to 7-0-0 against ECAC Hockey teams in 2010-11...With three points against Brown, freshman Marie-Philip Poulin extended her point-scoring streak to six games (5G,7A)...Sophomore netminder Alissa Fromkin turned aside all 14 shots faced against Brown as she earned her first collegiate shutout...Since the 2009-10 season, the Terriers are 27-0-6 when leading after two periods...The Terriers received their highest ranking in program history (No. 3) the week of Dec. 13.

University of Connecticut: The Huskies will finally return to the Mark Edward Freitas Ice Forum this coming weekend after taking a five-week break from having the home ice advantage...UConn has an overall record of 77-66-24 at home, and a 3-3-1 record as the home team this season...Going into the second half of the season Taylor Gross leads the Huskies with 14 points (10G, 4A) and Jennifer Chaisson and Kelly Horan are second and third on the team with 12 (3G, 9A) and 11 (4G, 7A) points respectively...Alexandra Garcia went over the 500 save mark for the season in Sunday's contest at Dartmouth and she now has 513 on the year, and has posted 30 or more saves in nine games this season...Brittany Murphy, who has four goals on the season, has posted a goal in two of the last three games, including the game-winner at Union back in December. Garcia and Nicole Paniccia have each posted a pair of shutouts for the Huskies this season, the latest coming at Union for Paniccia.

University of Maine: Maine returned to WHEA action Sunday night with a rare 8 p.m. game against Providence College, which Maine lost 2-1...Dominique Goutsis notched the lone goal for Maine. The goal was Goutsis' fourth of the season, a new career high for her for goals in a season after she notched three goals last year...Goutsis also has a three game point streak, with goals in her last two games...Melissa Gagnon (St. Gilles, Que.) and Chloe Tinkler (Wabush, Nfld.) each assisted on the goal, and both set new career highs for assists in a season as Gagnon now has six and Tinkler has five...The loss snapped Maine's two game unbeaten streak...Even with the loss, Maine is off to their best start in five years at 8-8-4 since starting the 2005-06 season at 10-4-5.

University of New Hampshire: UNH has been idle since its 1-0 victory vs. intrastate rival Dartmouth College on Dec. 11; the Wildcats return to action Jan. 9 at home against Northeastern...UNH has a 28-3-2 record in first games of a new year, and that includes a 10-0-1 mark at home; in the first game of the 2010 calendar year, UNH defeated NU, 5-3, in the Sun Life Frozen Fenway game...Junior goaltender Lindsey Minton has a 1.40 GAA, .946 save percentage and four shutouts in 10 home games this season. A freshman - Arielle O'Neill - leads the team in goals, points and plus/minus and sophomore Kristine Horn is atop the assist leaderboard...Twelve of UNH's 13 remaining regular-season games are vs. Hockey East foes; the only non-league game is Jan. 18 at Quinnipiac...UNH has lost seven consecutive Hockey East games; spanning the 2003-09 seasons, the 'Cats lost a total of 10 league games.

Northeastern University: The win at St. Cloud State snapped a two-game losing streak. Both losses were against top-5 opponents...The Huskies didn't allow a power play opportunity for the first time all season against St. Cloud State on Jan. 2. The Huskies took just one penalty all game, which was also a season-low. Northeastern has gone to the penalty box just six times in the last three games...Florence Schelling is now 3-1-1 when she records 30 or more saves. She has had at least 37 saves in two of her last three starts. Her 39 saves against St. Cloud State eclipsed her previous season-high 37 saves that she had against BU on Dec. 7...In both games over the weekend, a Husky notched her first Division 1 goal. Maggie Brennolt accomplished the feat against Wisconsin while Dani Rylan notched the game-winning goal against St. Cloud State...Northeastern has just two non-conference games left. Both games will be Beanpot contests.

Providence College: Senior goaltender Christina England (Wareham, Mass.) earned her first career victory in Sunday's 2-1 win at Maine...Junior Genevieve Lacasse (Scarborough, Ont.) is playing for Hockey Canada's Under 22 Select team in the MLP Cup in Switzerland. Lacasse had made 57 consecutive starts for the Friars prior to Sunday's visit to Orono.

University of Vermont: Vermont is 3-0-7 when scoring the first goal this season...Vermont is 1-2-3 in its last six Hockey East contests...The Catamounts came from behind Sunday to defeat Union and win their third straight game...The Catamounts three-game win streak is their longest since opening the 2007-08 season with four straight wins...Vermont's win Sunday was its first of the season when not scoring first...The Catamounts are now 3-2-4 against ECAC opponents this season...Senior captain Celeste Doucet leads the team in scoring with three goals and six assists for nine points in 20 games...Vermont hosts No. 8 North Dakota in a two-game series this weekend as they return to action at Gutterson Fieldhouse.

WHEA WEEKLY/MONTHLY AWARD WINNERS

PURE HOCKEY PLAYER OF THE WEEK

<u>Week</u>	<u>Player (School)</u>
Sept. 27	Brittany Dougherty (Maine)
Oct. 4	Jenn Wakefield (Boston U.)
Oct. 11	Kate Bacon (Providence College)
Oct. 18	Marie-Philip Poulin (Boston U.)
Oct. 25	Julia Marty (Northeastern)
Nov. 1	Kelli Stack (Boston College)
Nov. 8	Kathryn Miller (Boston U.)
Nov. 15	Kelly Horan (Connecticut)
Nov. 22	Katie MacSorley (Northeastern)
	Kelli Stack (Boston College)
Nov. 29	Brittany Dougherty (Maine)
Dec. 6	Erin Wente (Vermont)
Dec. 13	Jenn Wakefield (Boston U.)
Jan. 3	Jennifer Friedman (Providence College)

PRO AMBITIONS ROOKIE OF THE WEEK

<u>Week</u>	<u>Player (School)</u>
Sept. 27	Jenny Kistner (Maine)
Oct. 4	Corinne Buie (Providence College)
Oct. 11	Taylor Wasylyk (Boston College)
Oct. 18	Taylor Wasylyk (Boston College)
Oct. 25	Taylor Wasylyk (Boston College)
Nov. 1	Roxanne Douville (Vermont)
Nov. 8	Roxanne Douville (Vermont)
Nov. 15	Roxanne Douville (Vermont)
Nov. 22	Kerin Sperry (Boston University)
Nov. 29	Marie-Philip Poulin (Boston U.)
Dec. 6	Corinne Buie (Providence College)
Dec. 13	Marie-Philip Poulin (Boston U.)
Jan. 3	Marie-Philip Poulin (Boston U.)

HOCKEY EAST DEFENSIVE PLAYER OF THE WEEK

<u>Week</u>	<u>Player (School)</u>
Sept. 27	Brittany Ott (Maine)
Oct. 4	Kerrin Sperry (Boston University)
Oct. 11	Brittany Ott (Maine)
Oct. 18	Genevieve Lacasse (Providence College)
Oct. 25	Florence Schelling (Northeastern)
Nov. 1	Genevieve Lacasse (Providence College)
	Lindsey Minton (New Hampshire)
Nov. 8	Florence Schelling (Northeastern)
Nov. 15	Alexandra Garcia (Connecticut)
Nov. 22	Molly Schaus (Boston College)
Nov. 29	Brittany Ott (Maine)
Dec. 6	Genevieve Lacasse (Providence College)
Dec. 13	Lindsey Minton (New Hampshire)
Jan. 3	Kelci Lanthier (Vermont)

WHEA TEAM OF THE WEEK

<u>Week</u>	<u>School</u>
Sept. 27	Maine Black Bears
Oct. 4	New Hampshire Wildcats
Oct. 11	Providence College Friars
Oct. 18	Boston College Eagles
Oct. 25	Northeastern Huskies
Nov. 1	Boston College Eagles
Nov. 8	Boston University Terriers
Nov. 15	Connecticut Huskies
Nov. 22	Connecticut Huskies
Nov. 29	Boston College Eagles
Dec. 6	Providence College Friars
Dec. 13	Boston University Terriers
Jan. 3	Vermont Catamounts

PURE HOCKEY PLAYER OF THE MONTH

<u>Month</u>	<u>Player (School)</u>
Oct.	Kelli Stack (Boston College)
Nov.	Kelli Stack (Boston College)

PRO AMBITIONS ROOKIE OF THE MONTH

<u>Month</u>	<u>Player (School)</u>
Oct.	Marie-Philip Poulin (Boston U.)
Nov.	Roxanne Douville (Vermont)
	Kerrin Sperry (Boston University)

WHEA GOALTENDER OF THE MONTH

<u>Month</u>	<u>Player (School)</u>
Oct.	Genevieve Lacasse (Providence)
Nov.	Alexandra Garcia (Connecticut)



Boston College
11-3-4 Overall
(6-1-2 WHEA)



Boston University
15-2-3 Overall
(5-1-3 WHEA)

SEPTEMBER
24 vs. Windsor (Exh.) \$ W, 3-0

OCTOBER
8 at Colgate W, 4-0
9 at Syracuse W, 5-2
15 at Vermont* W, 3-0
16 at Vermont* W, 4-1
22 at Quinnipiac T, 3-3 (OT)
24 BROWN W, 5-2
30 at Connecticut* T, 2-2 (OT)
31 Connecticut* W, 3-0

NOVEMBER
3 at Northeastern* W, 3-1
7 VERMONT* T, 2-2 (OT)
12 at St. Lawrence L, 3-7
13 at St. Lawrence T, 1-1 (OT)
20 BOSTON UNIVERSITY* W, 6-3
21 at Boston University* L, 0-1
24 DARTMOUTH W, 4-2
28 at New Hampshire* W, 3-1

DECEMBER
5 HARVARD W, 6-2
31 at Princeton L, 0-3

JANUARY
3 at Yale 7 PM
8 at Maine* TBA
15 BOSTON UNIVERSITY* 2 PM
16 at Northeastern* 2 PM
21 at Providence* 7 PM
28 PROVIDENCE* 7 PM
30 NORHEASTERN* 2 PM

FEBRUARY
5 CONNECTICUT* 1 PM
6 at Providence* 2 PM
8 BOSTON UNIVERSITY (BP) 8 PM
11 MAINE* 7 PM
12 MAINE* 7 PM
15 Harvard/Northeastern (BP) 5/8 PM
19 NEW HAMPSHIRE* 2 PM
20 at New Hampshire* 2 PM

MARCH
4 NEW HAMPSHIRE* 7:30 PM
5 at New Hampshire* 7:00 PM

\$ - Walter Brown Arena

* denotes Hockey East game
Home games in CAPS



Connecticut
7-12-1 Overall
(4-4-1 WHEA)

OCTOBER
2 NEW HAMPSHIRE* L, 1-2
9 CLARKSON W, 3-1
10 St. Lawrence L, 2-3
15 at Colgate L, 3-5
16 at Syracuse L, 1-7
23 at Minnesota Duluth L, 0-8
24 at Minnesota Duluth L, 0-4
30 BOSTON COLLEGE* T, 2-2 (OT)
31 at Boston College* L, 0-3

NOVEMBER
6 MAINE W, 3-1
13 at New Hampshire* W, 1-0
14 NEW HAMPSHIRE* W, 2-1
20 at Vermont* W, 2-0
26 vs. Yale ^ L, 2-5
27 vs. Sacred Heart ^ W, 11-0

DECEMBER
4 BOSTON UNIVERSITY* L, 0-4
5 at Providence* L, 1-5
8 at Union W, 1-0

JANUARY
1 at Dartmouth L, 2-9
2 at Dartmouth L, 0-5
8 ROBERT MORRIS 1 PM
9 ROBERT MORRIS 1 PM
14 VERMONT* 7 PM
15 VERMONT* 4 PM
21 at Maine* 7PM
22 at Maine* 2PM
28 at Boston University* 7 PM
29 BOSTON UNIVERSITY* 4 PM

FEBRUARY
5 at Boston College* 1 PM
6 NORTHEASTERN* 1 PM
12 at Providence* 2 PM
13 PROVIDENCE* \$ 4PM
19 at Northeastern* 4 PM
20 NORTHEASTERN* 1 PM

^ - Nutmeg Classic (Hamden, CT)
\$ - Rentschler Field (Hartford, CT)



Maine
8-8-4 Overall
(2-4-2 WHEA)

SEPTEMBER
24 SACRED HEART W, 7-0
25 SACRED HEART W, 11-0

OCTOBER
9 MERCYHURST L, 2-5
10 MERCYHURST L, 1-6
15 QUINNIPIAC L, 2-4
16 QUINNIPIAC W, 4-2
22 at Niagara W, 3-1
23 at Niagara L, 1-3

NOVEMBER
6 at Connecticut* L, 1-3
7 at Providence* L, 1-3
11 NORTHEASTERN* T, 0-0 (OT)
12 NORTHEASTERN* T, 2-2 (OT)
23 NEW HAMPSHIRE* \$ W, 4-1
26 at Robert Morris W, 4-2
27 at Robert Morris T, 1-1 (OT)

DECEMBER
3 at Vermont* W, 3-2
4 at Vermont* L, 3-4 (OT)
10 UNION T, 2-2 (OT)
11 UNION W, 2-1

JANUARY
2 PROVIDENCE* L, 1-2
3 PROVIDENCE* 2 PM
8 BOSTON COLLEGE* TBA
15 at Northeastern* 2 PM
16 at Boston University* 3 PM
21 CONNECTICUT* 7PM
22 CONNECTICUT* 2PM
29 at New Hampshire* 2 PM
30 at New Hampshire* 2 PM

FEBRUARY
5 VERMONT* 2PM
11 at Boston College* 7 PM
12 at Boston College* 7 PM
18 BOSTON UNIVERSITY* 7PM
19 BOSTON UNIVERSITY* 12 PM

\$ - Lewiston, Maine



New Hampshire
9-10-0 Overall
(2-7-0 WHEA)

OCTOBER		
2	at Connecticut*	W, 2-1
8	at Syracuse	L, 2-4
9	at Colgate	L, 0-1 (OT)
15	at Rensselaer	W, 4-3
16	at Union	W, 4-1
22	CLARKSON	W, 2-1
23	ST. LAWRENCE	W, 5-3
29	NIAGARA	W, 1-0 (OT)
30	NIAGARA	W, 2-0
NOVEMBER		
6	VERMONT*	W, 2-0
7	at Boston University*	L, 2-5
13	CONNECTICUT*	L, 0-1
14	at Connecticut*	L, 1-2
23	at Maine* S	L, 1-4
28	BOSTON COLLEGE*	L, 1-3
DECEMBER		
1	NORTHEASTERN*	L, 0-4
4	at Providence*	L, 2-4
9	HARVARD	L, 1-3
11	DARTMOUTH	W, 1-0
JANUARY		
9	NORTHEASTERN*	2 PM
14	PROVIDENCE*	7 PM
15	at Providence*	7 PM
18	at Quinnipiac	7 PM
22	at Northeastern*	2 PM
29	MAINE*	2 PM
30	MAINE*	2 PM
FEBRUARY		
3	at Boston University*	7 PM
5	BOSTON UNIVERSITY*	2 PM
11	at Vermont*	7 PM
12	at Vermont*	4 PM
19	at Boston College*	2 PM
20	BOSTON COLLEGE*	2 PM

\$ - Lewiston, Maine

* denotes Hockey East game
Home games in CAPS



Northeastern
11-5-4 Overall
(3-3-3 WHEA)

SEPTEMBER		
26	MC GILL (Exh.)	W, 3-2 OT
OCTOBER		
1	at Syracuse	T, 4-4 OT
2	at Union	W, 3-2 OT
9	at Quinnipiac	L, 0-4
16	at Robert Morris	W, 6-4
17	at Robert Morris #	W, 4-3
22	PRINCETON	W, 2-1
24	RENSELAEER	W, 5-1
29	VERMONT*	T, 1-1 (OT)
30	VERMONT*	W, 4-0
NOVEMBER		
3	BOSTON COLLEGE*	L, 1-3
6	YALE	W, 4-0
11	at Maine*	T, 0-0 (OT)
12	at Maine*	T, 2-2 (OT)
20	at Providence*	L, 1-4
21	PROVIDENCE*	W, 5-1
28	BROWN	W, 2-1
DECEMBER		
1	at New Hampshire*	W, 4-0
7	at Boston University*	L, 0-3
JANUARY		
1	vs. Wisconsin ^	L, 2-7
2	at St. Cloud State ^	W, 2-1
9	at New Hampshire*	2 PM
15	MAINE*	2 PM
16	BOSTON COLLEGE*	2 PM
22	NEW HAMPSHIRE*	2 PM
23	PROVIDENCE* S	4 PM
28	at Vermont*	7 PM
30	at Boston College*	2 PM
FEBRUARY		
6	at Connecticut*	1 PM
8	vs. Harvard (BP)	5 PM
11	at Boston University*	7 PM
12	BOSTON UNIVERSITY*	2 PM
15	vs. Boston U./Boston Col. (BP)	5/8PM
19	CONNECTICUT*	4 PM
20	at Connecticut*	1 PM

- Pittsburgh College Hockey Showcase
^ - Easton Holiday Showcase (St. Cloud, MN)
\$ - The Blog (Kingston, MA)



Providence
14-5-1 Overall
(5-2-1 WHEA)

SEPTEMBER		
24	MC GILL (Exh.)	W, 3-1
25	MC GILL (Exh.)	W, 6-4
OCTOBER		
1	Robert Morris	L, 4-5
2	at Robert Morris	W, 5-2
9	ST. LAWRENCE	W, 6-1
10	CLARKSON	W, 5-0
15	at Syracuse	W, 4-1
16	at Colgate	W, 2-1 (OT)
22	RENSELAEER	L, 2-3 (OT)
23	PRINCETON	W, 4-0
29	BOSTON U.*	T, 2-2 (OT)
NOVEMBER		
2	at Yale	W, 3-1
6	at Boston University*	L, 1-4
7	MAINE*	W, 3-1
16	at Dartmouth	L, 2-3
20	NORTHEASTERN*	W, 4-1
21	at Northeastern*	L, 1-5
26	at Brown ^	W, 3-2
28	UNION	W, 2-1
DECEMBER		
4	NEW HAMPSHIRE*	W, 4-2
5	CONNECTICUT*	W, 5-1
JANUARY		
2	at Maine*	W, 2-1
3	at Maine*	2 PM
9	at Boston University*	3 PM
14	at New Hampshire*	7 PM
15	NEW HAMPSHIRE*	7 PM
21	BOSTON COLLEGE*	7 PM
23	at Northeastern* #	4 PM
28	at Boston College*	7 PM
30	at Vermont*	4 PM
FEBRUARY		
6	BOSTON COLLEGE*	2 PM
12	CONNECTICUT*	2 PM
13	at Connecticut* S	4PM
19	VERMONT*	1 PM
20	VERMONT*	1 PM

^ - Mayor's Cup
- The Bog (Kingston, MA)
\$ - Rentschler Field (Hartford, CT)



Vermont
4-8-8 Overall
(1-6-4 WHEA)

OCTOBER		
2	MC GILL (Exh.)	T, 2-2 OT
8	at Rensselaer	T, 3-3 OT
9	at Rensselaer	T, 1-1 OT
15	BOSTON COLLEGE*	L, 0-3
16	BOSTON COLLEGE*	L, 1-4
22	YALE	W, 4-1
23	YALE	T, 1-1 (OT)
29	at Northeastern*	T, 1-1 (OT)
30	at Northeastern*	L, 1-4
NOVEMBER		
6	New Hampshire*	L, 0-2
7	at Boston College*	T, 2-2 (OT)
12	at Boston University*	T, 1-1 (OT)
13	at Boston University*	T, 2-2 (OT)
20	CONNECTICUT*	L, 0-2
23	ST. LAWRENCE	L, 0-3
27	at Clarkson	T, 1-1 (OT)
28	at Clarkson	L, 0-4
DECEMBER		
3	MAINE*	L, 2-3
4	MAINE*	W, 4-3 (OT)
JANUARY		
1	at Union	W, 2-1
2	at Union	W, 3-1
7	NORTH DAKOTA	7 PM
8	NORTH DAKOTA	2 PM
14	at Connecticut*	7 PM
15	at Connecticut*	4 PM
18	DARTMOUTH (FPD on 12/29)	7 PM
22	BOSTON UNIVERSITY*	2 PM
28	NORTHEASTERN*	7 PM
30	PROVIDENCE*	4 PM
FEBRUARY		
5	at Maine*	2 PM
11	NEW HAMPSHIRE*	7 PM
12	NEW HAMPSHIRE*	4 PM
19	at Providence*	1 PM
20	at Providence*	1 PM

National Category Leaders

Points Per Game		GP	G-A-P	P/GM	
1	Meghan Agosta	Mercyhurst	SR F 17	19-26-45	2.65
2	Haley Irwin	Minnesota Duluth	JR F 16	17-19-36	2.25
3	Stacey Hochkins	Holy Cross	JR F 10	11-10-21	2.10
4	Vicki Bendus	Mercyhurst	SR F 15	11-20-31	2.07
5	Meghan Duggan	Wisconsin	SR F 20	17-24-41	2.05
6	Marie-Philip Poulin	Boston University	FR F 16	16-15-31	1.94
7	Hilary Knight	Wisconsin	JR F 20	23-15-38	1.90
8	Kelli Stack	Boston College	SR F 17	21-11-32	1.88
9	Jenn Wakefield	Boston University	JR F 16	16-14-30	1.88
10	Brianna Decker	Wisconsin	SO F 20	18-18-36	1.80
11	Kelly Babstock	Quinnipiac	FR F 21	17-19-36	1.71
12	Brianne Jenner	Cornell	FR F 12	11-9-20	1.67
	Rebecca Johnston	Cornell	JR F 12	8-12-20	1.67
	Jesse Scanzano	Mercyhurst	SR F 18	11-19-30	1.67
15	Bailey Bram	Mercyhurst	JR F 14	9-14-23	1.64
16	Laura McIntosh	Ohio State	JR F 19	8-23-31	1.63
17	Jocelyne Lamoureux	North Dakota	SO F 15	16-8-24	1.60
	Natalie Spooner	Ohio State	JR F 15	17-7-24	1.60
19	Elin Holmlov	Minnesota Duluth	SR F 18	7-20-27	1.50
20	Isabel Menard	Syracuse	SO F 19	11-17-28	1.47
21	Monique Lamoureux-Kolls	North Dakota	SO F 15	8-13-21	1.40
	Brooke Ammerman	Wisconsin	JR F 20	12-16-28	1.40
23	Hokey Langan	Ohio State	SO F 20	11-16-27	1.35
24	Erin Cody	Bemidji State	SR F 18	12-12-24	1.33
25	Christine Bestland	Mercyhurst	FR F 18	10-13-23	1.28
	Jessica Wong	Minnesota Duluth	SO F 18	10-13-23	1.28

Goals Against Average		Minutes	GA	GAA		
1	Monique Gallant	Holy Cross	SR	279:57	4	0.86
2	Amanda Mazzotta	Cornell	JR	792:19	12	0.91
3	Kim Martin	Minnesota Duluth	SR	762:53	17	1.34
4	Molly Schaus	Boston College	SR	829:56	19	1.37
5	Kerrin Sperry	Boston University	FR	789:22	19	1.44
6	Becca Ruegsegger	Wisconsin	SO	398:00	10	1.51
7	Carly Dominick-Sobol	Holy Cross	JR	357:24	9	1.51
8	Noora R%oty	Minnesota	SO	929:33	24	1.55
9	Lindsey Minton	New Hampshire	JR	840:20	23	1.64
10	Erica Howe	Clarkson	FR	496:01	14	1.69
11	Rachel Weber	Princeton	JR	742:21	22	1.78
12	Victoria Vigilanti	Quinnipiac	SO	1205:52	36	1.79
13	Genevieve Lacasse	Providence	JR	1147:57	36	1.88
14	Florence Schelling	Northeastern	JR	1113:07	35	1.89
15	Zuzana Tomcikova	Bemidji State	JR	866:43	28	1.94
16	Roxanne Douville	Vermont	FR	809:59	27	2.00
17	Caitlyn Lahonen	Wisconsin	FR	800:35	27	2.02
18	Stephanie Ney	North Dakota	JR	549:09	19	2.08
19	Kelci Lanthier	Vermont	SO	428:54	15	2.10
20	Jackee Snikeris	Yale	SR	304:13	11	2.17
21	Caitlyn Lahonen	St. Lawrence	FR	425:58	16	2.25
22	Brittany Ott	Maine	SO	972:00	37	2.28
23	Kate Gallagher	Union	JR	884:18	34	2.31
24	Jenesica Drinkwater	Syracuse	FR	577:09	23	2.39
25	Genny Ladiges	Yale	JR	426:23	17	2.39

Points Per Game (Defensemen)		GP	G-A-P	P/GM	
1	Sasha Nanji	Dartmouth	SO D 13	10-6-16	1.23
2	Laura Fortino	Cornell	SO D 14	4-11-15	1.07
3	Jocelyne Larocque	Minnesota Duluth	SR D 16	5-10-15	0.94
4	Cassee Schols	Mercyhurst	SR D 18	4-11-15	0.83
	Jill Szandzik	Wayne State	JR D 18	1-14-15	0.83
6	Jennifer Friedman	Providence	JR D 20	5-11-16	0.80
7	Lauriane Rougeau	Cornell	SO D 14	0-11-11	0.79
8	Pamela Zgoda	Mercyhurst	JR D 18	2-12-14	0.78
9	Anne Schleper	Minnesota	JR D 19	4-10-14	0.74
	Brooke Fernandez	St. Lawrence	SO D 19	5-9-14	0.74
11	Catherine Ward	Boston University	SR D 18	1-12-13	0.72
12	Alyssa Gagliardi	Cornell	FR D 14	0-10-10	0.71
13	Melissa Lacroix	Mercyhurst	SR D 17	3-9-12	0.71
	Ashley Cockell	Syracuse	SR D 17	5-7-12	0.71
15	Shannon Reilly	Ohio State	SR D 20	5-9-14	0.70
16	Leanna Coskren	Harvard	SR D 13	2-7-9	0.69
17	Courtney Birchard	New Hampshire	SR D 15	4-6-10	0.67
	Bethany Dymarczyk	Quinnipiac	JR D 21	3-11-14	0.67
19	Jordan Slavin	North Dakota	SO D 14	4-5-9	0.64
20	Josephine Pucci	Harvard	SO D 11	3-4-7	0.64

Save Percentage		Saves	GA	Save %		
1	Monique Gallant	Holy Cross	SR	87	4	.956
2	Amanda Mazzotta	Cornell	JR	242	12	.953
3	Carly Dominick-Sobol	Holy Cross	JR	161	9	.947
4	Kim Martin	Minnesota Duluth	SR	293	17	.945
5	Noora R%oty	Minnesota	SO	412	24	.945
6	Molly Schaus	Boston College	SR	297	19	.940
7	Genevieve Lacasse	Providence	JR	555	36	.939
8	Kerrin Sperry	Boston University	FR	283	19	.937
9	Jackee Snikeris	Yale	SR	159	11	.935
10	Zuzana Tomcikova	Bemidji State	JR	397	28	.934
11	Florence Schelling	Northeastern	JR	487	35	.933
12	Lindsey Minton	New Hampshire	JR	317	23	.932
13	Kelci Lanthier	Vermont	SO	206	15	.932
14	Roxanne Douville	Vermont	FR	368	27	.932
15	Brittany Ott	Maine	SO	502	37	.931
16	Kate Gallagher	Union	JR	456	34	.931
17	Erica Howe	Clarkson	FR	186	14	.930
18	Genny Ladiges	Yale	JR	221	17	.929
19	Victoria Vigilanti	Quinnipiac	SO	466	36	.928
20	Stephanie Ney	North Dakota	JR	238	19	.926

Points Per Game (Freshmen)		GP	G-A-P	P/GM	
1	Marie-Philip Poulin	Boston University	F 16	16-15-31	1.94
2	Kelly Babstock	Quinnipiac	F 21	17-19-36	1.71
3	Brianne Jenner	Cornell	F 12	11-9-20	1.67
4	Christine Bestland	Mercyhurst	F 18	10-13-23	1.28
5	Amanda Kessel	Minnesota	F 16	6-14-20	1.25
6	Kelly Terry	Minnesota	F 19	8-14-22	1.16
7	Jessica Campbell	Cornell	F 13	7-8-15	1.15
8	Erica Uden Johansson	Quinnipiac	F 19	8-11-19	1.00
9	Taylor Wasylyk	Boston College	F 17	9-7-16	0.94
10	Rylee Smith	St. Lawrence	F 19	6-11-17	0.89
11	Kathleen Rogan	Minnesota State	F 20	10-7-17	0.85
	Brittany Ammerman	Wisconsin	F 20	9-8-17	0.85
13	Sarah Davis	Minnesota	F 19	5-11-16	0.84
14	Sally Butler	Princeton	F 17	7-6-13	0.76
15	Corinne Buie	Providence	F 20	7-8-15	0.75
16	Melissa Bizzari	Boston College	F 18	6-7-13	0.72
17	Alyssa Gagliardi	Cornell	D 14	0-10-10	0.71
18	Taylor Gross	Connecticut	F 20	10-4-14	0.70
	Katie MacSorley	Northeastern	F 20	11-3-14	0.70
20	Olivia Mucha	Princeton	F 19	5-8-13	0.68
	Thea Imbrogno	Robert Morris	F 19	5-8-13	0.68

Winning Percentage		W-L-T	Win %		
1	Monique Gallant	Holy Cross	SR	5-0-0	1.000
2	Amanda Mazzotta	Cornell	JR	13-1-0	.929
3	Alex Rigsby	Wisconsin	FR	12-1-0	.923
	Kerrin Sperry	Boston University	FR	11-0-2	.923
5	Molly Schaus	Boston College	SR	11-1-2	.857
	Becca Ruegsegger	Wisconsin	SO	6-1-0	.857
7	Hilary Pattenden	Mercyhurst	JR	13-4-0	.765
8	Noora R%oty	Minnesota	SO	12-4-0	.750
9	Genevieve Lacasse	Providence	JR	13-5-1	.711
10	Kim Martin	Minnesota Duluth	SR	9-4-0	.692
11	Stephanie Ney	North Dakota	JR	5-2-2	.667
	Jenesica Drinkwater	Syracuse	FR	5-2-2	.667
	Carly Dominick-Sobol	Holy Cross	JR	4-2-0	.667
14	Caitlyn Lahonen	St. Lawrence	FR	4-2-1	.643
15	Florence Schelling	Northeastern	JR	10-5-4	.632
16	Victoria Vigilanti	Quinnipiac	SO	12-7-1	.625
	Lindsay Holdcroft	Dartmouth	FR	5-3-0	.625
18	Whitney Woodcox	Dartmouth	SO	3-2-0	.600
19	Danielle Butters	Minnesota State	FR	3-2-1	.583
20	Lisa Steffes	Ohio State	FR	10-8-2	.550

National Category Leaders

Goals Per Game			GP	G	G/GM
1	Kelli Stack	Boston College	SR F	17 21	1.24
2	Hilary Knight	Wisconsin	JR F	20 23	1.15
3	Natalie Spooner	Ohio State	JR F	15 17	1.13
4	Meghan Agosta	Mercyhurst	SR F	17 19	1.12
5	Stacey Hochkins	Holy Cross	JR F	10 11	1.10
6	Jocelyne Lamoureux	North Dakota	SO F	15 16	1.07
7	Haley Irwin	Minnesota Duluth	JR F	16 17	1.06
8	Marie-Philip Poulin	Boston University	FR F	16 16	1.00
	Jenn Wakefield	Boston University	JR F	16 16	1.00
10	Brianne Jenner	Cornell	FR F	12 11	0.92
11	Nicola Garat	Holy Cross	JR F	11 10	0.91
12	Brianna Decker	Wisconsin	SO F	20 18	0.90
13	Meghan Duggan	Wisconsin	SR F	20 17	0.85
14	Kelly Babstock	Quinnipiac	FR F	21 17	0.81
15	Sasha Nanji	Dartmouth	SO D	13 10	0.77
16	Vicki Bendus	Mercyhurst	SR F	15 11	0.73
17	Kate Bacon	Providence	JR F	20 14	0.70
18	Erin Cody	Bemidji State	SR F	18 12	0.67
	Kelley Steadman	Mercyhurst	JR F	18 12	0.67
	Rebecca Johnston	Cornell	JR F	12 8	0.67
	Amanda Trunzo	Dartmouth	SR F	12 8	0.67
22	Chelsea Karpenko	Cornell	JR F	14 9	0.64
	Bailey Bram	Mercyhurst	JR F	14 9	0.64
24	Jocelyn Kratchmer	Holy Cross	SR F	11 7	0.64
25	Jesse Scanzano	Mercyhurst	SR F	18 11	0.61

Assists Per Game			GP	A	A/GM
1	Meghan Agosta	Mercyhurst	SR F	17 26	1.53
2	Vicki Bendus	Mercyhurst	SR F	15 20	1.33
3	Laura McIntosh	Ohio State	JR F	19 23	1.21
4	Meghan Duggan	Wisconsin	SR F	20 24	1.20
5	Haley Irwin	Minnesota Duluth	JR F	16 19	1.19
6	Elin Holmlov	Minnesota Duluth	SR F	18 20	1.11
7	Jesse Scanzano	Mercyhurst	SR F	18 19	1.06
8	Bailey Bram	Mercyhurst	JR F	14 14	1.00
	Rebecca Johnston	Cornell	JR F	12 12	1.00
	Stacey Hochkins	Holy Cross	JR F	10 10	1.00
11	Marie-Philip Poulin	Boston University	FR F	16 15	0.94
12	Kelly Babstock	Quinnipiac	FR F	21 19	0.90
13	Brianna Decker	Wisconsin	SO F	20 18	0.90
14	Isabel Menard	Syracuse	SO F	19 17	0.89
15	Jenn Wakefield	Boston University	JR F	16 14	0.88
	Amanda Kessel	Minnesota	FR F	16 14	0.88
17	Monique Lamoureux-Kolls	North Dakota	SO F	15 13	0.87
18	Jenelle Kohanchuk	Boston University	JR F	19 16	0.84
19	Hokey Langan	Ohio State	SO F	20 16	0.80
	Brooke Ammerman	Wisconsin	JR F	20 16	0.80
21	Lauriane Rougeau	Cornell	SO D	14 11	0.79
	Laura Fortino	Cornell	SO D	14 11	0.79
23	Jill Szandzik	Wayne State	JR D	18 14	0.78
24	Camille Dumais	Dartmouth	SO F	13 10	0.77
25	Hilary Knight	Wisconsin	JR F	20 15	0.75
	Brianne Jenner	Cornell	FR F	12 9	0.75

Power Play Goals			GP	PPG/G	PPG	
1	Natalie Spooner	Ohio State	JR F	15	0.40	6
	Meghan Agosta	Mercyhurst	SR F	17	0.35	6
	Julie Rising	Syracuse	SR F	19	0.32	6
	Brooke Ammerman	Wisconsin	JR F	20	0.30	6
	Meghan Duggan	Wisconsin	SR F	20	0.30	6
6	Jenn Wakefield	Boston University	JR F	16	0.31	5
	Haley Irwin	Minnesota Duluth	JR F	16	0.31	5
	Kelli Stack	Boston College	SR F	17	0.29	5
	Brianna Gillanders	Minnesota Duluth	FR F	18	0.28	5
	Regan Boulton	Quinnipiac	SO D	18	0.28	5
	Jennie Gallo	Maine	SR F	20	0.25	5
	Hokey Langan	Ohio State	SO F	20	0.25	5
13	8 Players Tied With					4

Game-Winning Goals			GP	GWG	
1	Brianna Decker	Wisconsin	SO F	20	6
	Kelly Babstock	Quinnipiac	FR F	21	6
3	Jenn Wakefield	Boston University	JR F	16	5
4	Haley Irwin	Minnesota Duluth	JR F	16	4
	Kelli Stack	Boston College	SR F	17	4
	Meghan Agosta	Mercyhurst	SR F	17	4
7	18 Players Tied With				3

Shorthanded Goals			GP	SHG/G	SHG	
1	Marie-Philip Poulin	Boston University	FR F	16	0.19	3
2	Jocelyn Kratchmer	Holy Cross	SR F	11	0.18	2
	Jenn Wakefield	Boston University	JR F	16	0.12	2
	Haley Irwin	Minnesota Duluth	JR F	16	0.12	2
	Meghan Agosta	Mercyhurst	SR F	17	0.12	2
	Jesse Scanzano	Mercyhurst	SR F	18	0.11	2
	Carolyne PrÉvost	Wisconsin	JR F	18	0.11	2
	Meghan Duggan	Wisconsin	SR F	20	0.10	2
9	38 Players Tied With					1

National Team Leaders



SCORING OFFENSE	GP	Goals	G/GM
1 Mercyhurst	18	97	5.39
2 Wisconsin	20	105	5.25
3 Cornell	14	61	4.36
4 Holy Cross	11	44	4.00
5 Boston University	20	76	3.80
6 Minnesota Duluth	18	68	3.78
7 Dartmouth	13	46	3.54
8 Providence	20	64	3.20
9 Boston College	18	57	3.17
10 Minnesota	19	60	3.16
11 Ohio State	20	62	3.10
12 North Dakota	18	54	3.00
Quinnipiac	21	63	3.00
14 St. Lawrence	19	53	2.79
15 Maine	20	55	2.75
16 Syracuse	19	52	2.74
17 Northeastern	20	52	2.60
18 Harvard	13	31	2.38
19 Wayne State	18	41	2.28
20 Princeton	19	38	2.00
Robert Morris	19	38	2.00
22 Colgate	18	35	1.94
23 Connecticut	20	37	1.85
Minnesota State	20	37	1.85
25 Rensselaer	19	35	1.84
26 Bemidji State	18	33	1.83
27 Yale	14	25	1.79
28 New Hampshire	19	33	1.74
29 Clarkson	19	31	1.63
30 Brown	13	19	1.46
31 Vermont	20	29	1.45
32 Niagara	20	27	1.35
33 Union	20	25	1.25
34 Sacred Heart	15	17	1.13
35 St. Cloud State	19	18	0.95



SCORING DEFENSE	GP	Goals	G/GM
1 Cornell	14	12	0.86
2 Holy Cross	11	15	1.36
3 Minnesota Duluth	18	27	1.50
4 Minnesota	19	33	1.74
5 Boston University	20	35	1.75
6 Quinnipiac	21	38	1.81
7 Boston College	18	33	1.83
8 Providence	20	37	1.85
Wisconsin	20	37	1.85
10 New Hampshire	19	40	2.11
11 Northeastern	20	43	2.15
Vermont	20	43	2.15
13 Princeton	19	41	2.16
14 Maine	20	44	2.20
15 Bemidji State	18	40	2.22
16 Clarkson	19	44	2.32
17 Rensselaer	19	45	2.37
18 Mercyhurst	18	45	2.50
19 Dartmouth	13	33	2.54
20 St. Lawrence	19	50	2.63
21 Yale	14	37	2.64
22 Union	20	55	2.75
23 Wayne State	18	51	2.83
24 Ohio State	20	57	2.85
25 Colgate	18	52	2.89
26 Syracuse	19	55	2.89
27 Niagara	20	58	2.90
28 Brown	13	38	2.92
29 North Dakota	18	53	2.94
30 Minnesota State	20	59	2.95
31 Harvard	13	39	3.00
32 Connecticut	20	65	3.25
33 Robert Morris	19	79	4.16
34 St. Cloud State	19	90	4.74
35 Sacred Heart	15	84	5.60



POWER PLAY	Totals	SHA	PP%
1 Wisconsin	22/83	0	26.5
2 Cornell	15/58	1	25.9
3 Mercyhurst	25/107	1	23.4
4 Minnesota	18/78	1	23.1
5 Boston University	19/86	0	22.1
6 Quinnipiac	21/97	2	21.6
7 Holy Cross	11/51	0	21.6
8 Dartmouth	13/62	3	21.0
9 Wayne State	18/89	3	20.2
10 Minnesota Duluth	17/85	0	20.0
11 Maine	22/118	1	18.6
12 Ohio State	16/86	3	18.6
13 Boston College	13/76	0	17.1
14 Syracuse	15/91	0	16.5
15 Northeastern	12/73	0	16.4
16 North Dakota	17/104	5	16.3
17 St. Lawrence	17/105	5	16.2
18 Colgate	14/88	1	15.9
19 Providence	15/103	0	14.6
20 Harvard	7/49	0	14.3
21 Robert Morris	13/93	6	14.0
22 Rensselaer	10/72	1	13.9
23 Bemidji State	9/71	1	12.7
24 Yale	6/50	2	12.0
25 Connecticut	8/71	2	11.3
26 Minnesota State	6/57	1	10.5
Vermont	10/95	0	10.5
28 Sacred Heart	6/60	3	10.0
29 Brown	3/33	1	9.1
Clarkson	7/77	0	9.1
31 Princeton	7/80	0	8.8
32 Niagara	7/89	2	7.9



PENALTY KILL	Totals	SHF	PK%
1 Cornell	46/48	1	95.8
2 Boston University	89/94	6	94.7
3 New Hampshire	89/97	1	91.8
4 Minnesota	85/93	1	91.4
5 North Dakota	68/75	0	90.7
6 Holy Cross	48/53	3	90.6
7 Maine	109/123	0	88.6
8 Mercyhurst	96/110	4	87.3
9 Dartmouth	41/47	0	87.2
10 Boston College	81/93	1	87.1
11 Providence	79/91	4	86.8
12 Niagara	78/90	0	86.7
13 Minnesota Duluth	63/73	4	86.3
St. Lawrence	63/73	3	86.3
15 Rensselaer	68/79	0	86.1
16 Quinnipiac	61/71	0	85.9
17 Vermont	65/76	2	85.5
18 Wisconsin	55/65	7	84.6
19 Northeastern	71/84	2	84.5
20 Wayne State	65/77	0	84.4
21 Union	70/83	2	84.3
22 Connecticut	65/78	0	83.3
Ohio State	60/72	0	83.3
24 Colgate	74/89	0	83.1
25 Clarkson	77/93	2	82.8
26 Princeton	67/81	1	82.7
27 Bemidji State	55/67	1	82.1
28 Syracuse	71/88	1	80.7
29 Yale	42/53	2	79.2
30 Sacred Heart	49/62	1	79.0
31 Minnesota State	71/90	3	78.9
32 Brown	36/46	1	78.3



Hockey East Overall Scoring Leaders

Scoring

				GP	G-A-P	PPG	PIM	PP	SH	GW	HT	+/-	
1	Kelli Stack	BC	SR	F	17	21-11-32	1.88	11/22	5	1	4	3	+17
2	Marie-Philip Poulin	BU	FR	F	16	16-15-31	1.94	9/18	4	3	1	1	+17
3	Jenn Wakefield	BU	JR	F	16	16-14-30	1.88	6/12	5	2	5	0	+13
4	Jenelle Kohanchuk	BU	JR	F	19	6-16-22	1.16	7/14	2	0	1	0	+16
	Brittany Dougherty	ME	SO	F	20	10-12-22	1.10	14/28	4	0	2	0	+4
6	Kate Bacon	PC	JR	F	20	14-6-20	1.00	7/14	4	1	2	1	+12
7	Mary Restuccia	BC	JR	F	18	6-13-19	1.06	10/20	3	0	2	0	+5
	Jillian Kirchner	BU	SR	F	20	8-11-19	0.95	4/8	2	0	1	0	+10
9	Tara Watchorn	BU	JR	D	14	5-13-18	1.29	12/24	1	1	0	0	+13
	Alyse Ruff	PC	SR	F	20	5-13-18	0.90	11/22	2	0	3	0	+20
11	Jennie Gallo	ME	SR	F	20	10-7-17	0.85	6/12	5	0	1	0	+7
	Myriam Croussette	ME	JR	F	20	8-9-17	0.85	6/12	3	0	0	0	+4
13	Taylor Wasyk	BC	FR	F	17	9-7-16	0.94	9/18	2	0	3	0	+10
	Danielle Ward	ME	JR	F	20	7-9-16	0.80	7/22	2	0	1	0	-1
	Jennifer Friedman	PC	JR	D	20	5-11-16	0.80	12/32	2	0	3	0	+11
16	Rachel Llanes	NU	SO	F	20	8-7-15	0.75	6/12	3	0	2	0	+9
	Corinne Buie	PC	FR	F	20	7-8-15	0.75	8/16	1	0	0	0	+15
18	Katie MacSorley	NU	FR	F/F	20	11-3-14	0.70	2/4	1	0	1	1	+8
	Taylor Gross	UC	FR	F	20	10-4-14	0.70	1/2	1	0	2	1	E
20	Melissa Bizzari	BC	FR	F	18	6-7-13	0.72	3/6	0	0	0	0	+9
	Catherine Ward	BU	SR	D	18	1-12-13	0.72	4/8	1	0	0	0	+9
	Dawn Sullivan	ME	JR	F	20	5-8-13	0.65	1/2	4	0	2	0	-1
23	Danielle Welch	BC	JR	C	18	3-9-12	0.67	7/14	0	0	0	0	+11
	Ashley Cottrell	PC	JR	F	20	7-5-12	0.60	5/10	0	1	3	0	+10
	Claire Santostefano	NU	FR	F/F	20	4-8-12	0.60	4/8	0	1	0	0	+7
	Abby Gauthier	PC	JR	F	20	4-8-12	0.60	8/16	3	0	0	0	+8
	Jennifer Chaisson	UC	SR	F	20	3-9-12	0.60	2/4	1	0	0	0	-1

Defenseman Scoring

				GP	G-A-P	PPG	PIM	PP	SH	GW	HT	+/-	
1	Tara Watchorn	BU	JR	D	14	5-13-18	1.29	12/24	1	1	0	0	+13
2	Jennifer Friedman	PC	JR	D	20	5-11-16	0.80	12/32	2	0	3	0	+11
3	Catherine Ward	BU	SR	D	18	1-12-13	0.72	4/8	1	0	0	0	+9
4	Julia Marty	NU	SR	D	20	2-9-11	0.55	8/16	1	0	0	0	+5
5	Courtney Birchard	UNH	SR	D	15	4-6-10	0.67	6/12	0	0	1	0	+2
6	Sami Evelyn	UC	JR	D	20	3-6-9	0.45	9/18	1	0	1	0	-11
	Carly Warren	BU	JR	D	20	2-7-9	0.45	6/12	2	0	1	0	+16
	Ashley Norum	ME	JR	D	20	1-8-9	0.45	23/46	1	0	1	0	-1
9	Blake Bolden	BC	SO	D	17	3-5-8	0.47	10/20	3	0	1	0	+8
	Maggie DiMasi	NU	FR	D/D	19	1-7-8	0.42	12/24	1	0	0	0	+8
	Kathryn Miller	BU	SO	D	20	3-5-8	0.40	3/6	0	0	0	0	+3
	Maude Blain	UC	SO	D	20	3-5-8	0.40	8/16	2	0	0	0	-2
	Amber Yung	PC	SR	D	20	1-7-8	0.40	2/4	0	0	0	0	+12
14	Chloe Tinkler	ME	SO	D	20	2-5-7	0.35	13/26	0	0	0	0	E
	Saleah Morrison	UVM	SR	D	20	2-5-7	0.35	6/12	1	0	1	0	-7

Freshman Scoring

				GP	G-A-P	PPG	PIM	PP	SH	GW	HT	+/-	
1	Marie-Philip Poulin	BU	FR	F	16	16-15-31	1.94	9/18	4	3	1	1	+17
2	Taylor Wasyk	BC	FR	F	17	9-7-16	0.94	9/18	2	0	3	0	+10
3	Corinne Buie	PC	FR	F	20	7-8-15	0.75	8/16	1	0	0	0	+15
4	Katie MacSorley	NU	FR	F/F	20	11-3-14	0.70	2/4	1	0	1	1	+8
	Taylor Gross	UC	FR	F	20	10-4-14	0.70	1/2	1	0	2	1	E
6	Melissa Bizzari	BC	FR	F	18	6-7-13	0.72	3/6	0	0	0	0	+9
7	Claire Santostefano	NU	FR	F/F	20	4-8-12	0.60	4/8	0	1	0	0	+7
8	Arielle O'Neill	UNH	FR	F	18	7-4-11	0.61	5/10	1	1	1	0	+7
9	Maggie DiMasi	NU	FR	D/D	19	1-7-8	0.42	12/24	1	0	0	0	+8
	Jocelyn Slattery	UC	FR	F	20	2-6-8	0.40	5/10	0	0	1	0	-6
11	Hannah Armstrong	UNH	FR	F	19	2-5-7	0.37	8/16	2	0	1	0	-1
12	Meagan Mangene	BC	FR	D	14	1-5-6	0.43	3/6	0	0	0	0	+15
	Rebecca Morse	PC	FR	D	19	2-4-6	0.32	6/12	0	0	1	0	+8
	Kayla Kaluzny	ME	FR	F/D	20	1-5-6	0.30	10/20	0	0	0	0	+2
15	Danielle Doherty	BC	FR	F	18	1-4-5	0.28	2/4	0	0	0	0	+7
	Stephanie Raithby	UC	FR	F	20	3-2-5	0.25	9/18	0	0	0	0	-14
	Kaleigh Fratkin	BU	FR	D	20	0-5-5	0.25	13/29	0	0	0	0	+9
	Alexandra Vakos	UC	FR	F	20	0-5-5	0.25	3/6	0	0	0	0	-6

Hockey East Overall Scoring Leaders

Goal Scoring

				GP	G	GPG	Assist Scoring				GP	A	APG		
1	Kelli Stack	BC	SR	F	17	21	1.24	1	Jenelle Kohanchuk	BU	JR	F	19	16	0.84
2	Marie-Philip Poulin	BU	FR	F	16	16	1.00	2	Marie-Philip Poulin	BU	FR	F	16	15	0.94
	Jenn Wakefield	BU	JR	F	16	16	1.00	3	Jenn Wakefield	BU	JR	F	16	14	0.88
4	Kate Bacon	PC	JR	F	20	14	0.70	4	Tara Watchorn	BU	JR	D	14	13	0.93
5	Katie MacSorley	NU	FR	F/F	20	11	0.55		Mary Restuccia	BC	JR	F	18	13	0.72
6	Taylor Gross	UC	FR	F	20	10	0.50		Alyse Ruff	PC	SR	F	20	13	0.65
	Jennie Gallo	ME	SR	F	20	10	0.50	7	Catherine Ward	BU	SR	D	18	12	0.67
	Brittany Dougherty	ME	SO	F	20	10	0.50		Brittany Dougherty	ME	SO	F	20	12	0.60
9	Taylor Wasylk	BC	FR	F	17	9	0.53	9	Kelli Stack	BC	SR	F	17	11	0.65
10	Jillian Kirchner	BU	SR	F	20	8	0.40		Jillian Kirchner	BU	SR	F	20	11	0.55
	Myriam Croussette	ME	JR	F	20	8	0.40		Jennifer Friedman	PC	JR	D	20	11	0.55
	Rachel Llanes	NU	SO	F	20	8	0.40	12	Danielle Welch	BC	JR	C	18	9	0.50
13	Arielle O'Neill	UNH	FR	F	18	7	0.39		Jennifer Chaisson	UC	SR	F	20	9	0.45
	Danielle Ward	ME	JR	F	20	7	0.35		Myriam Croussette	ME	JR	F	20	9	0.45
	Ashley Cottrell	PC	JR	F	20	7	0.35		Danielle Ward	ME	JR	F	20	9	0.45
	Corinne Buie	PC	FR	F	20	7	0.35		Julia Marty	NU	SR	D	20	9	0.45

Power Play Goals

				GP	G	GPG	Power Play Points				GP	G-A-P	PPG		
1	Jenn Wakefield	BU	JR	F	16	5	0.31	1	Kelli Stack	BC	SR	F	17	5-7-12	0.71
	Kelli Stack	BC	JR	F	17	5	0.29	2	Jenn Wakefield	BU	JR	F	16	5-6-11	0.69
	Jennie Gallo	ME	SR	F	20	5	0.25	3	Marie-Philip Poulin	BU	FR	F	16	4-6-10	0.62
4	Marie-Philip Poulin	BU	FR	F	16	4	0.25		Brittany Dougherty	ME	SO	F	20	4-6-10	0.50
	Dawn Sullivan	ME	JR	F	20	4	0.20	5	Tara Watchorn	BU	JR	D	14	1-7-8	0.57
	Brittany Dougherty	ME	SO	F	20	4	0.20		Mary Restuccia	BC	JR	F	18	3-5-8	0.44
	Kate Bacon	PC	JR	F	20	4	0.20		Dawn Sullivan	ME	JR	F	20	4-4-8	0.40
8	Blake Bolden	BC	SO	D	17	3	0.18	8	Jenelle Kohanchuk	BU	JR	F	19	2-5-7	0.37
	Mary Restuccia	BC	JR	F	18	3	0.17		Jennie Gallo	ME	SR	F	20	5-2-7	0.35
	Dominique Goutsis	ME	JR	F	19	3	0.16		Kate Bacon	PC	JR	F	20	4-3-7	0.35
	Myriam Croussette	ME	JR	F	20	3	0.15		Myriam Croussette	ME	JR	F	20	3-4-7	0.35
	Rachel Llanes	NU	SO	F	20	3	0.15		Danielle Ward	ME	JR	F	20	2-5-7	0.35
	Abby Gauthier	PC	JR	F	20	3	0.15								

Shorthanded Goals

				GP	G	GPG	Game-Winning Goals				GP	G	GPG		
1	Marie-Philip Poulin	BU	FR	F	16	3	0.19	1	Jenn Wakefield	BU	JR	F	16	5	0.31
2	Jenn Wakefield	BU	JR	F	16	2	0.12	2	Kelli Stack	BC	SR	F	17	4	0.24
3	Tara Watchorn	BU	JR	D	14	1	0.07	3	Taylor Wasylk	BC	FR	F	17	3	0.18
	Kelli Stack	BC	SR	F	17	1	0.06		Kristina Lavoie	UNH	SO	F	19	3	0.16
	Arielle O'Neill	UNH	FR	F	18	1	0.06		Jill Cardella	BU	SO	F	20	3	0.15
	Kristi Kehoe	NU	SR	F	19	1	0.05		Alyse Ruff	PC	SR	F	20	3	0.15
	Claire Santostefano	NU	FR	F/F	20	1	0.05		Ashley Cottrell	PC	JR	F	20	3	0.15
	Kate Bacon	PC	JR	F	20	1	0.05		Jennifer Friedman	PC	JR	D	20	3	0.15
	Ashley Cottrell	PC	JR	F	20	1	0.05	9	Mary Restuccia	BC	JR	F	18	2	0.11
	Jessica Vella	PC	SO	F	20	1	0.05		Alyssa Wohlfeiler	NU	SR	F	18	2	0.11
	Jessica Cohen	PC	SO	F	20	1	0.05		Kelly Horan	UC	SO	F	20	2	0.10
	Celeste Doucet	UVM	SR	F	20	1	0.05		Taylor Gross	UC	FR	F	20	2	0.10
	Lindsey Cashman	UVM	SR	F	20	1	0.05		Dawn Sullivan	ME	JR	F	20	2	0.10
									Brittany Dougherty	ME	SO	F	20	2	0.10
									Rachel Llanes	NU	SO	F	20	2	0.10
									Kate Bacon	PC	JR	F	20	2	0.10
									Laura Veharanta	PC	JR	F	20	2	0.10

Plus-Minus

				GP	+/-	
1	Alyse Ruff	PC	SR	F	20	+20
2	Marie-Philip Poulin	BU	FR	F	16	+17
	Kelli Stack	BC	SR	F	17	+17
4	Jenelle Kohanchuk	BU	JR	F	19	+16
	Carly Warren	BU	JR	D	20	+16
6	Meagan Mangene	BC	FR	D	14	+15
	Corinne Buie	PC	FR	F	20	+15
8	Laura Veharanta	PC	JR	F	20	+14
9	Tara Watchorn	BU	JR	D	14	+13
	Jenn Wakefield	BU	JR	F	16	+13

Hat Tricks

				GP	HT	
1	Kelli Stack	BC	SR	F	17	3
2	Jean O'Neill	PC	SR	F	3	1
	Marie-Philip Poulin	BU	FR	F	16	1
	Taylor Gross	UC	FR	F	20	1
	Katie MacSorley	NU	FR	F/F	20	1
	Kate Bacon	PC	JR	F	20	1

Hockey East Overall Goaltending Leaders

Goals Against Average

			GP	Minutes	GA	GAA	Record	SO	Saves	Save %	
1	Molly Schaus	BC	SR	14	829:56	19	1.37	11-1-2	3	297	.940
2	Kerrin Sperry	BU	FR	13	789:22	19	1.44	11-0-2	3	283	.937
3	Lindsey Minton	UNH	JR	14	840:20	23	1.64	7-7-0	4	317	.932
4	Genevieve Lacasse	PC	JR	19	1147:57	36	1.88	13-5-1	2	555	.939
5	Florence Schelling	NU	JR	19	1113:07	35	1.89	10-5-4	3	487	.933
6	Roxanne Douville	UVM	FR	13	809:59	27	2.00	2-5-6	0	368	.932
7	Kelci Lanthier	UVM	SO	7	428:54	15	2.10	2-3-2	0	206	.932
8	Brittany Ott	ME	SO	16	972:00	37	2.28	6-7-3	2	502	.931
9	Alexandra Garcia	UC	JR	18	995:18	52	3.13	5-11-1	2	513	.908

Save Percentage

			GP	Minutes	GA	GAA	Record	SO	Saves	Save %	
1	Molly Schaus	BC	SR	14	829:56	19	1.37	11-1-2	3	297	.940
2	Genevieve Lacasse	PC	JR	19	1147:57	36	1.88	13-5-1	2	555	.939
3	Kerrin Sperry	BU	FR	13	789:22	19	1.44	11-0-2	3	283	.937
4	Florence Schelling	NU	JR	19	1113:07	35	1.89	10-5-4	3	487	.933
5	Lindsey Minton	UNH	JR	14	840:20	23	1.64	7-7-0	4	317	.932
6	Kelci Lanthier	UVM	SO	7	428:54	15	2.10	2-3-2	0	206	.932
7	Roxanne Douville	UVM	FR	13	809:59	27	2.00	2-5-6	0	368	.932
8	Brittany Ott	ME	SO	16	972:00	37	2.28	6-7-3	2	502	.931
9	Alexandra Garcia	UC	JR	18	995:18	52	3.13	5-11-1	2	513	.908

Saves

			GP	SVS/G	Saves	Shutouts		GP	Shutouts			
1	Genevieve Lacasse	PC	JR	19	29.2	555	1	Lindsey Minton	UNH	JR	14	4
2	Alexandra Garcia	UC	JR	18	28.5	513	2	Kerrin Sperry	BU	FR	13	3
3	Brittany Ott	ME	SO	16	31.4	502		Molly Schaus	BC	SR	14	3
4	Florence Schelling	NU	JR	19	25.6	487		Florence Schelling	NU	JR	19	3
5	Roxanne Douville	UVM	FR	13	28.3	368	5	Nicole Paniccia	UC	FR	4	2
6	Lindsey Minton	UNH	JR	14	22.6	317		Brittany Ott	ME	SO	16	2
7	Molly Schaus	BC	SR	14	21.2	297		Alexandra Garcia	UC	JR	18	2
8	Kerrin Sperry	BU	FR	13	21.8	283		Genevieve Lacasse	PC	JR	19	2
9	Kelci Lanthier	UVM	SO	7	29.4	206	9	Alissa Fromkin	BU	SO	7	1
10	Alissa Fromkin	BU	SO	7	19.7	138						
11	Kayley Herman	UNH	SR	5	22.4	112						
12	Kiera Kingston	BC	JR	5	19.6	98						
13	Nicole Paniccia	UC	FR	4	17.8	71						
14	Candice Currier	ME	JR	4	15.8	63						
15	Leah Sulyma	NU	SR	3	12.0	36						
16	Braly Hiller	BU	FR	1	18.0	18						
17	Claire Francis	UC	SO	1	14.0	14						
18	Christina England	PC	SR	1	12.0	12						
19	Kylie Smith	ME	SO	1	5.0	5						

Hockey East Overall Team Stats



TEAM OFFENSE

Team	Games	Goals	G/GM
1 Boston University	20	76	3.80
2 Providence	20	64	3.20
3 Boston College	18	57	3.17
4 Maine	20	55	2.75
5 Northeastern	20	52	2.60
6 Connecticut	20	37	1.85
7 New Hampshire	19	33	1.74
8 Vermont	20	29	1.45

TEAM DEFENSE

Team	Games	Goals	G/GM
1 Boston University	20	35	1.75
2 Boston College	18	33	1.83
3 Providence	20	37	1.85
4 New Hampshire	19	40	2.11
5 Northeastern	20	43	2.15
Vermont	20	43	2.15
7 Maine	20	44	2.20
8 Connecticut	20	65	3.25



POWER PLAY

Team	Totals	SHA	PP %
1 Boston University	19/86	0	22.1
2 Maine	22/118	1	18.6
3 Boston College	13/76	0	17.1
4 Northeastern	12/73	0	16.4
5 Providence	15/103	0	14.6
6 Connecticut	8/71	2	11.3
7 Vermont	10/95	0	10.5
8 New Hampshire	5/68	1	7.4

PENALTY KILL

Team	Totals	SHF	PK %
1 Boston University	89/94	6	94.7
2 New Hampshire	89/97	1	91.8
3 Maine	109/123	0	88.6
4 Boston College	81/93	1	87.1
5 Providence	79/91	4	86.8
6 Vermont	65/76	2	85.5
7 Northeastern	71/84	2	84.5
8 Connecticut	65/78	0	83.3



PENALTY MINUTES

Team	Games	PIM	PIM/G
1 Maine	20	282	14.1
2 Boston College	18	198	11.0
3 New Hampshire	19	204	10.7
4 Providence	20	208	10.4
5 Boston University	20	205	10.2
6 Vermont	20	202	10.1
7 Northeastern	20	188	9.4
8 Connecticut	20	162	8.1

SHOTS ON GOAL

Team	Games	SOG	SOG/G
1 Providence	20	665	33.2
2 Boston University	20	661	33.0
3 Northeastern	20	649	32.5
4 Boston College	18	566	31.4
5 Maine	20	501	25.1
6 New Hampshire	19	470	24.7
7 Vermont	20	458	22.9
8 Connecticut	20	440	22.0



SCORING BY PERIOD

Team	1st	2nd	3rd	OT	Total
1 Boston University	20	29	27	0	76
2 Providence	16	23	24	1	64
3 Boston College	17	20	20	0	57
4 Maine	11	17	27	0	55
5 Northeastern	18	13	20	1	52
6 Connecticut	15	12	10	0	37
7 New Hampshire	12	11	9	1	33
8 Vermont	13	7	8	1	29

GOALS ALLOWED BY PERIOD

Team	1st	2nd	3rd	OT	Total
1 Boston College	15	10	8	0	33
2 Boston University	15	10	10	0	35
3 Providence	6	15	15	1	37
4 New Hampshire	10	10	19	1	40
5 Northeastern	10	16	17	0	43
Vermont	12	14	17	0	43
7 Maine	16	14	13	1	44
8 Connecticut	14	21	30	0	65



SPECIAL TEAMS NET

Team	PPF	SHA	PP NET	PPA	SHF	SH NET	ST NET
1 Boston University	19	0	+19	5	6	+1	+20
2 Maine	22	1	+21	14	0	-14	+7
Providence	15	0	+15	12	4	-8	+7
4 Boston College	13	0	+13	12	1	-11	+2
5 Northeastern	12	0	+12	13	2	-11	+1
Vermont	10	0	+10	11	2	-9	+1
7 New Hampshire	5	1	+4	8	1	-7	-3
8 Connecticut	8	2	+6	13	0	-13	-7



Hockey East Conference Scoring Leaders

Scoring

				GP	G-A-P	PPG	PIM	PP	SH	GW	HT	+/-	
1	Kelli Stack	BC	SR	F	9	12-5-17	1.89	5/10	4	1	3	1	+8
2	Jenn Wakefield	BU	JR	F	5	6-4-10	2.00	1/2	2	0	2	0	+2
	Mary Restuccia	BC	JR	F	9	2-8-10	1.11	2/4	1	0	0	0	+4
4	Corinne Buie	PC	FR	F	8	3-6-9	1.12	1/2	0	0	0	0	+6
5	Kate Bacon	PC	JR	F	8	5-3-8	1.00	2/4	3	0	1	0	+4
	Katie MacSorley	NU	FR	F/F	9	6-2-8	0.89	1/2	1	0	1	1	+7
7	Jillian Kirchner	BU	SR	F	9	3-4-7	0.78	2/4	2	0	0	0	+3
	Danielle Welch	BC	JR	C	9	2-5-7	0.78	5/10	0	0	0	0	+4
	Catherine Ward	BU	SR	D	9	1-6-7	0.78	2/4	1	0	0	0	+7
	Erin Wente	UVM	SO	F	11	5-2-7	0.64	4/8	2	0	1	0	-1
11	Marie-Philip Poulin	BU	FR	F	5	4-2-6	1.20	5/10	1	0	0	0	+2
	Danielle Ward	ME	JR	F	8	4-2-6	0.75	6/20	1	0	0	0	E
	Alyse Ruff	PC	SR	F	8	2-4-6	0.75	6/12	0	0	1	0	+8
	Claire Santostefano	NU	FR	F/F	9	3-3-6	0.67	0/0	0	0	0	0	+7
	Jenelle Kohanchuk	BU	JR	F	9	2-4-6	0.67	5/10	0	0	1	0	+4
16	Jennie Gallo	ME	SR	F	8	3-2-5	0.62	3/6	2	0	0	0	E
	Myriam Croussette	ME	JR	F	8	2-3-5	0.62	2/4	1	0	0	0	-1
	Dawn Sullivan	ME	JR	F	8	1-4-5	0.62	0/0	0	0	1	0	+1
	Holly Lorms	BU	SR	F	9	4-1-5	0.56	2/4	1	0	1	0	+5
	Taylor Wasylk	BC	FR	F	9	3-2-5	0.56	4/8	1	0	2	0	+5
	Taylor Gross	UC	FR	F	9	3-2-5	0.56	1/2	0	0	0	0	E
	Kathryn Miller	BU	SO	D	9	2-3-5	0.56	3/6	0	0	0	0	+2
	Kailey Nash	UVM	JR	F	11	1-4-5	0.45	7/25	0	0	0	0	-4
24	13 Players Tied With					4 Points							

Defenseman Scoring

				GP	G-A-P	PPG	PIM	PP	SH	GW	HT	+/-	
1	Catherine Ward	BU	SR	D	9	1-6-7	0.78	2/4	1	0	0	0	+7
2	Kathryn Miller	BU	SO	D	9	2-3-5	0.56	3/6	0	0	0	0	+2
3	Tara Watchorn	BU	JR	D	4	1-3-4	1.00	4/8	0	0	0	0	E
	Rebecca Morse	PC	FR	D	7	2-2-4	0.57	1/2	0	0	1	0	+3
	Saleah Morrison	UVM	SR	D	11	1-3-4	0.36	4/8	1	0	0	0	-7
6	Jennifer Friedman	PC	JR	D	8	2-1-3	0.38	7/22	1	0	2	0	+5
	Amber Yung	PC	SR	D	8	1-2-3	0.38	0/0	0	0	0	0	+1
	Melissa Gagnon	ME	JR	D	8	0-3-3	0.38	2/4	0	0	0	0	-3
	Blake Bolden	BC	SO	D	9	1-2-3	0.33	5/10	1	0	0	0	+3
	Sami Evelyn	UC	JR	D	9	1-2-3	0.33	3/6	1	0	1	0	-4
	Maude Blain	UC	SO	D	9	1-2-3	0.33	4/8	0	0	0	0	E
	Rebecca Hewett	UC	JR	D	9	0-3-3	0.33	6/12	0	0	0	0	-4
13	14 Players Tied With					2 Points							

Freshman Scoring

				GP	G-A-P	PPG	PIM	PP	SH	GW	HT	+/-	
1	Corinne Buie	PC	FR	F	8	3-6-9	1.12	1/2	0	0	0	0	+6
2	Katie MacSorley	NU	FR	F/F	9	6-2-8	0.89	1/2	1	0	1	1	+7
3	Marie-Philip Poulin	BU	FR	F	5	4-2-6	1.20	5/10	1	0	0	0	+2
	Claire Santostefano	NU	FR	F/F	9	3-3-6	0.67	0/0	0	0	0	0	+7
5	Taylor Wasylk	BC	FR	F	9	3-2-5	0.56	4/8	1	0	2	0	+5
	Taylor Gross	UC	FR	F	9	3-2-5	0.56	1/2	0	0	0	0	E
7	Rebecca Morse	PC	FR	D	7	2-2-4	0.57	1/2	0	0	1	0	+3
	Arielle O'Neill	UNH	FR	F	8	2-2-4	0.50	1/2	0	1	0	0	+1
9	Melissa Bizzari	BC	FR	F	9	1-2-3	0.33	1/2	0	0	0	0	+5
10	Meagan Mangene	BC	FR	D	8	1-1-2	0.25	2/4	0	0	0	0	+9
	Missy Denk	ME	FR	F	8	1-1-2	0.25	5/10	0	0	0	0	E
	Kelly McDonald	ME	FR	D	8	0-2-2	0.25	4/8	0	0	0	0	+2
	Kayla Kaluzny	ME	FR	F/D	8	0-2-2	0.25	3/6	0	0	0	0	-1
	Jocelyn Slattery	UC	FR	F	9	2-0-2	0.22	4/8	0	0	1	0	+1
	Sarah Campbell	UNH	FR	F	9	1-1-2	0.22	0/0	0	0	0	0	+1
	Kaleigh Fratkin	BU	FR	D	9	0-2-2	0.22	5/13	0	0	0	0	+3
	Maggie DiMasi	NU	FR	D/D	9	0-2-2	0.22	5/10	0	0	0	0	+2

Hockey East Conference Scoring Leaders

Goal Scoring

				GP	G	GPG	
1	Kelli Stack	BC	SR	F	9	12	1.33
2	Jenn Wakefield	BU	JR	F	5	6	1.20
	Katie MacSorley	NU	FR	F/F	9	6	0.67
4	Kate Bacon	PC	JR	F	8	5	0.62
	Erin Wente	UVM	SO	F	11	5	0.45
6	Marie-Philip Poulin	BU	FR	F	5	4	0.80
	Danielle Ward	ME	JR	F	8	4	0.50
	Ashley Cottrell	PC	JR	F	8	4	0.50
	Holly Lorms	BU	SR	F	9	4	0.44
10	Jennie Gallo	ME	SR	F	8	3	0.38
	Brittany Dougherty	ME	SO	F	8	3	0.38
	Corinne Buie	PC	FR	F	8	3	0.38
	Taylor Wasylk	BC	FR	F	9	3	0.33
	Jillian Kirchner	BU	SR	F	9	3	0.33
	Taylor Gross	UC	FR	F	9	3	0.33
	Claire Santostefano	NU	FR	F/F	9	3	0.33

Assist Scoring

					GP	A	APG
1	Mary Restuccia	BC	JR	F	9	8	0.89
2	Corinne Buie	PC	FR	F	8	6	0.75
	Catherine Ward	BU	SR	D	9	6	0.67
4	Danielle Welch	BC	JR	C	9	5	0.56
	Kelli Stack	BC	SR	F	9	5	0.56
6	Jenn Wakefield	BU	JR	F	5	4	0.80
	Dawn Sullivan	ME	JR	F	8	4	0.50
	Alyse Ruff	PC	SR	F	8	4	0.50
	Jillian Kirchner	BU	SR	F	9	4	0.44
	Jenelle Kohanchuk	BU	JR	F	9	4	0.44
	Jennifer Chaisson	UC	SR	F	9	4	0.44
	Kailey Nash	UVM	JR	F	11	4	0.36
13	Tara Watchorn	BU	JR	D	4	3	0.75
	Melissa Gagnon	ME	JR	D	8	3	0.38
	Myriam Croussette	ME	JR	F	8	3	0.38
	Kate Bacon	PC	JR	F	8	3	0.38
	Abby Gauthier	PC	JR	F	8	3	0.38
	Kathryn Miller	BU	SO	D	9	3	0.33
	Taylor Holze	BU	SO	F	9	3	0.33
	Rebecca Hewett	UC	JR	D	9	3	0.33
	Dani Rylan	NU	JR	F/F	9	3	0.33
	Claire Santostefano	NU	FR	F/F	9	3	0.33
	Saleah Morrison	UVM	SR	D	11	3	0.27

Power Play Goals

				GP	G	GPG	
1	Kelli Stack	BC	SR	F	9	4	0.44
2	Kate Bacon	PC	JR	F	8	3	0.38
3	Jenn Wakefield	BU	JR	F	5	2	0.40
	Jennie Gallo	ME	SR	F	8	2	0.25
	Brittany Dougherty	ME	SO	F	8	2	0.25
	Jillian Kirchner	BU	SR	F	9	2	0.22
	Erin Wente	UVM	SO	F	11	2	0.18

Power Play Points

					GP	G-A-P	PPG
1	Kelli Stack	BC	SR	F	9	4-3-7	0.78
2	Mary Restuccia	BC	JR	F	9	1-4-5	0.56
3	Jenn Wakefield	BU	JR	F	5	2-2-4	0.80
	Kate Bacon	PC	JR	F	8	3-1-4	0.50
5	Tara Watchorn	BU	JR	D	4	0-3-3	0.75
	Marie-Philip Poulin	BU	FR	F	5	1-2-3	0.60
	Danielle Ward	ME	JR	F	8	1-2-3	0.38
	Melissa Gagnon	ME	JR	D	8	0-3-3	0.38
	Jillian Kirchner	BU	SR	F	9	2-1-3	0.33
	Saleah Morrison	UVM	SR	D	11	1-2-3	0.27
	Kailey Nash	UVM	JR	F	11	0-3-3	0.27

Shorthanded Goals

				GP	G	GPG	
1	Arielle O'Neill	UNH	FR	F	8	1	0.12
	Ashley Cottrell	PC	JR	F	8	1	0.12
	Kelli Stack	BC	SR	F	9	1	0.11

Game-Winning Goals

					GP	G	GPG
1	Kelli Stack	BC	SR	F	9	3	0.33
2	Jenn Wakefield	BU	JR	F	5	2	0.40
	Jennifer Friedman	PC	JR	D	8	2	0.25
	Taylor Wasylk	BC	FR	F	9	2	0.22
	Kelly Horan	UC	SO	F	9	2	0.22
	Kristina Lavoie	UNH	SO	F	9	2	0.22
7	Rebecca Morse	PC	FR	D	7	1	0.14
	Dawn Sullivan	ME	JR	F	8	1	0.12
	Brittany Dougherty	ME	SO	F	8	1	0.12
	Alyse Ruff	PC	SR	F	8	1	0.12
	Kate Bacon	PC	JR	F	8	1	0.12
	Kristina Brown	BC	SO	F	9	1	0.11
	Holly Lorms	BU	SR	F	9	1	0.11
	Jenelle Kohanchuk	BU	JR	F	9	1	0.11
	Louise Warren	BU	FR	F	9	1	0.11
	Sami Evelyn	UC	JR	D	9	1	0.11
	Jocelyn Slattery	UC	FR	F	9	1	0.11
	Alyssa Wohlfeiler	NU	SR	F	9	1	0.11
	Rachel Llanes	NU	SO	F	9	1	0.11
	Katie MacSorley	NU	FR	F/F	9	1	0.11
	Erin Wente	UVM	SO	F	11	1	0.09

Plus-Minus

				GP	+/-	
1	Meagan Mangene	BC	FR	D	8	+9
2	Alyse Ruff	PC	SR	F	8	+8
	Kelli Stack	BC	SR	F	9	+8
4	Laura Veiharanta	PC	JR	F	8	+7
	Dru Burns	BC	SO	D	9	+7
	Catherine Ward	BU	SR	D	9	+7
	Katie MacSorley	NU	FR	F/F	9	+7
	Claire Santostefano	NU	FR	F/F	9	+7
9	Corinne Buie	PC	FR	F	8	+6
	Dani Rylan	NU	JR	F/F	9	+6

Hat Tricks

					GP	HT
1	Kelli Stack	BC	SR	F	9	1
	Katie MacSorley	NU	FR	F/F	9	1

Hockey East Conference Goaltending Leaders

Goals Against Average

			GP	Minutes	GA	GAA	Record	SO	Saves	Save %	
1	Kerrin Sperry	BU	FR	6	369:49	6	0.97	4-0-2	3	131	.956
2	Molly Schaus	BC	SR	8	484:56	9	1.11	6-1-1	2	166	.949
3	Florence Schelling	NU	JR	9	554:00	15	1.62	3-3-3	2	228	.938
4	Alexandra Garcia	UC	JR	9	539:06	17	1.89	4-4-1	2	253	.937
5	Brittany Ott	ME	SO	8	488:58	17	2.09	2-4-2	1	223	.929
6	Roxanne Douville	UVM	FR	9	560:34	20	2.14	1-4-4	0	254	.927
7	Genevieve Lacasse	PC	JR	7	424:34	16	2.26	4-2-1	0	220	.932
8	Lindsey Minton	UNH	JR	6	356:27	14	2.36	1-5-0	1	132	.904

Save Percentage

			GP	Minutes	GA	GAA	Record	SO	Saves	Save %	
1	Kerrin Sperry	BU	FR	6	369:49	6	0.97	4-0-2	3	131	.956
2	Molly Schaus	BC	SR	8	484:56	9	1.11	6-1-1	2	166	.949
3	Florence Schelling	NU	JR	9	554:00	15	1.62	3-3-3	2	228	.938
4	Alexandra Garcia	UC	JR	9	539:06	17	1.89	4-4-1	2	253	.937
5	Genevieve Lacasse	PC	JR	7	424:34	16	2.26	4-2-1	0	220	.932
6	Brittany Ott	ME	SO	8	488:58	17	2.09	2-4-2	1	223	.929
7	Roxanne Douville	UVM	FR	9	560:34	20	2.14	1-4-4	0	254	.927
8	Lindsey Minton	UNH	JR	6	356:27	14	2.36	1-5-0	1	132	.904

Saves

			GP	SVS/G	Saves	
1	Roxanne Douville	UVM	FR	9	28.2	254
2	Alexandra Garcia	UC	JR	9	28.1	253
3	Florence Schelling	NU	JR	9	25.3	228
4	Brittany Ott	ME	SO	8	27.9	223
5	Genevieve Lacasse	PC	JR	7	31.4	220
6	Molly Schaus	BC	SR	8	20.8	166
7	Lindsey Minton	UNH	JR	6	22.0	132
8	Kerrin Sperry	BU	FR	6	21.8	131
9	Kelci Lanthier	UVM	SO	2	33.0	66
10	Alissa Fromkin	BU	SO	3	21.7	65
11	Kayley Herman	UNH	SR	3	20.7	62
12	Kiera Kingston	BC	JR	1	20.0	20
13	Braly Hiller	BU	FR	1	18.0	18
14	Christina England	PC	SR	1	12.0	12

Shutouts

			GP	Shutouts	
1	Kerrin Sperry	BU	FR	6	3
2	Molly Schaus	BC	SR	8	2
	Alexandra Garcia	UC	JR	9	2
	Florence Schelling	NU	JR	9	2
5	Lindsey Minton	UNH	JR	6	1
	Brittany Ott	ME	SO	8	1

Hockey East Conference Team Stats



TEAM OFFENSE

Team	Games	Goals	G/GM
1 Boston College	9	26	2.89
2 Boston University	9	25	2.78
3 Providence	8	22	2.75
4 Northeastern	9	18	2.00
5 Maine	8	15	1.88
6 Connecticut	9	12	1.33
7 Vermont	11	14	1.27
8 New Hampshire	9	11	1.22

TEAM DEFENSE

Team	Games	Goals	G/GM
1 Boston College	9	11	1.22
2 Boston University	9	14	1.56
3 Northeastern	9	15	1.67
4 Connecticut	9	18	2.00
5 Maine	8	17	2.12
Providence	8	17	2.12
7 Vermont	11	27	2.45
8 New Hampshire	9	24	2.67



POWER PLAY

Team	Totals	SHA	PP %
1 Boston University	7/36	0	19.4
2 Maine	7/45	1	15.6
3 Boston College	7/46	0	15.2
4 Providence	4/36	0	11.1
5 Vermont	6/56	0	10.7
6 Connecticut	3/34	1	8.8
7 Northeastern	3/37	0	8.1
8 New Hampshire	1/29	1	3.4

PENALTY KILL

Team	Totals	SHF	PK %
1 Boston College	39/41	1	95.1
2 Boston University	36/38	0	94.7
3 Connecticut	32/36	0	88.9
4 Maine	39/44	0	88.6
5 New Hampshire	36/41	1	87.8
6 Northeastern	35/41	0	85.4
7 Vermont	37/45	0	82.2
8 Providence	27/33	1	81.8



PENALTY MINUTES

Team	Games	PIM	PIM/G
1 Maine	8	110	13.8
2 Vermont	11	130	11.8
3 Providence	8	86	10.8
4 Boston University	9	91	10.1
5 Northeastern	9	90	10.0
6 Boston College	9	88	9.8
7 New Hampshire	9	82	9.1
8 Connecticut	9	78	8.7

SHOTS ON GOAL

Team	Games	SOG	SOG/G
1 Northeastern	9	318	35.3
2 Boston College	9	313	34.8
3 Providence	8	254	31.8
4 Boston University	9	285	31.7
5 Vermont	11	267	24.3
6 New Hampshire	9	215	23.9
7 Maine	8	169	21.1
8 Connecticut	9	172	19.1



SCORING BY PERIOD

Team	1st	2nd	3rd	OT	Total
1 Boston College	6	11	9	0	26
2 Boston University	2	11	12	0	25
3 Providence	8	6	8	0	22
4 Northeastern	7	2	9	0	18
5 Maine	2	2	11	0	15
6 Vermont	5	4	4	1	14
7 Connecticut	5	4	3	0	12
8 New Hampshire	7	3	1	-	11

GOALS ALLOWED BY PERIOD

Team	1st	2nd	3rd	OT	Total
1 Boston College	6	3	2	0	11
2 Boston University	7	3	4	0	14
3 Northeastern	3	6	6	0	15
4 Maine	6	5	5	1	17
Providence	2	8	7	0	17
6 Connecticut	6	4	8	0	18
7 New Hampshire	4	5	15	-	24
8 Vermont	8	9	10	0	27



SPECIAL TEAMS NET

Team	PPF	SHA	PP NET	PPA	SHF	SH NET	ST NET
1 Boston College	7	0	+7	2	1	-1	+6
2 Boston University	7	0	+7	2	0	-2	+5
3 Maine	7	1	+6	5	0	-5	+1
4 Providence	4	0	+4	6	1	-5	-1
5 Connecticut	3	1	+2	4	0	-4	-2
Vermont	6	0	+6	8	0	-8	-2
7 Northeastern	3	0	+3	6	0	-6	-3
8 New Hampshire	1	1	0	5	1	-4	-4

