

FAILED QUERIES

Baseline parquet partitioned

benchmark query mean_duration std_dev

Dynamic row filtering

benchmark query mean_duration std_dev

SUMMARY

	label	TPCH wall time	TPC-DS wall time	TPCH CPU time	TPC-DS CPU time	TPCH internalNetworkInputDataSize	TPC-DS internalNetworkInputDataSize	TPCH peak memory	TPC-DS peak memory
0	Baseline parquet partitioned	289.333000	466.449167	28539.700000	44841.884667	1.362 TiB	1.376 TiB	1.210 TiB	0.967 TiB
1	Dynamic row filtering	292.108000	449.273333	28485.300000	41877.036500	1.363 TiB	1.178 TiB	1.208 TiB	0.921 TiB

Store sales flat Comparison (DURATION)

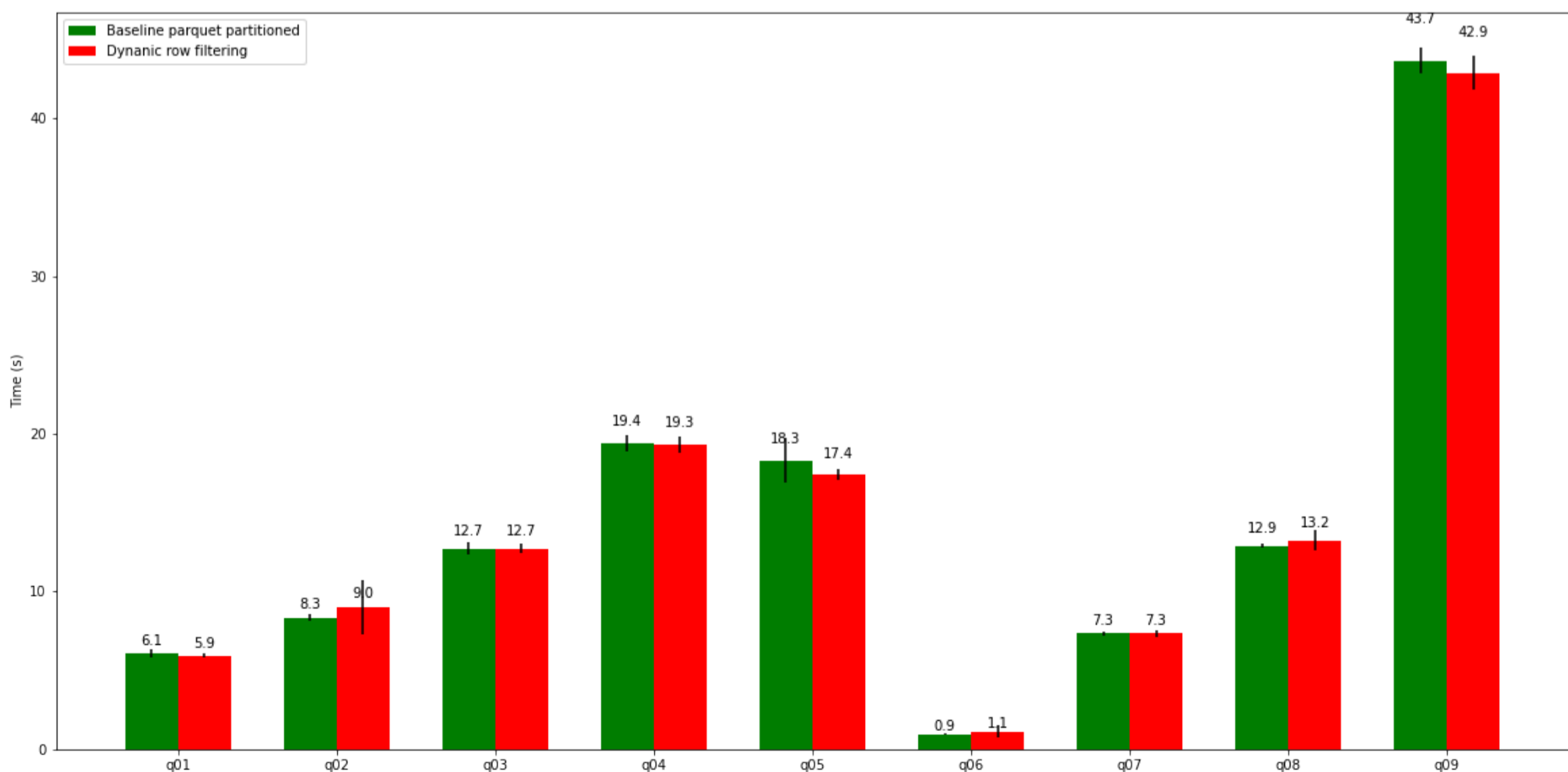
Store sales flat Comparison (CPU)

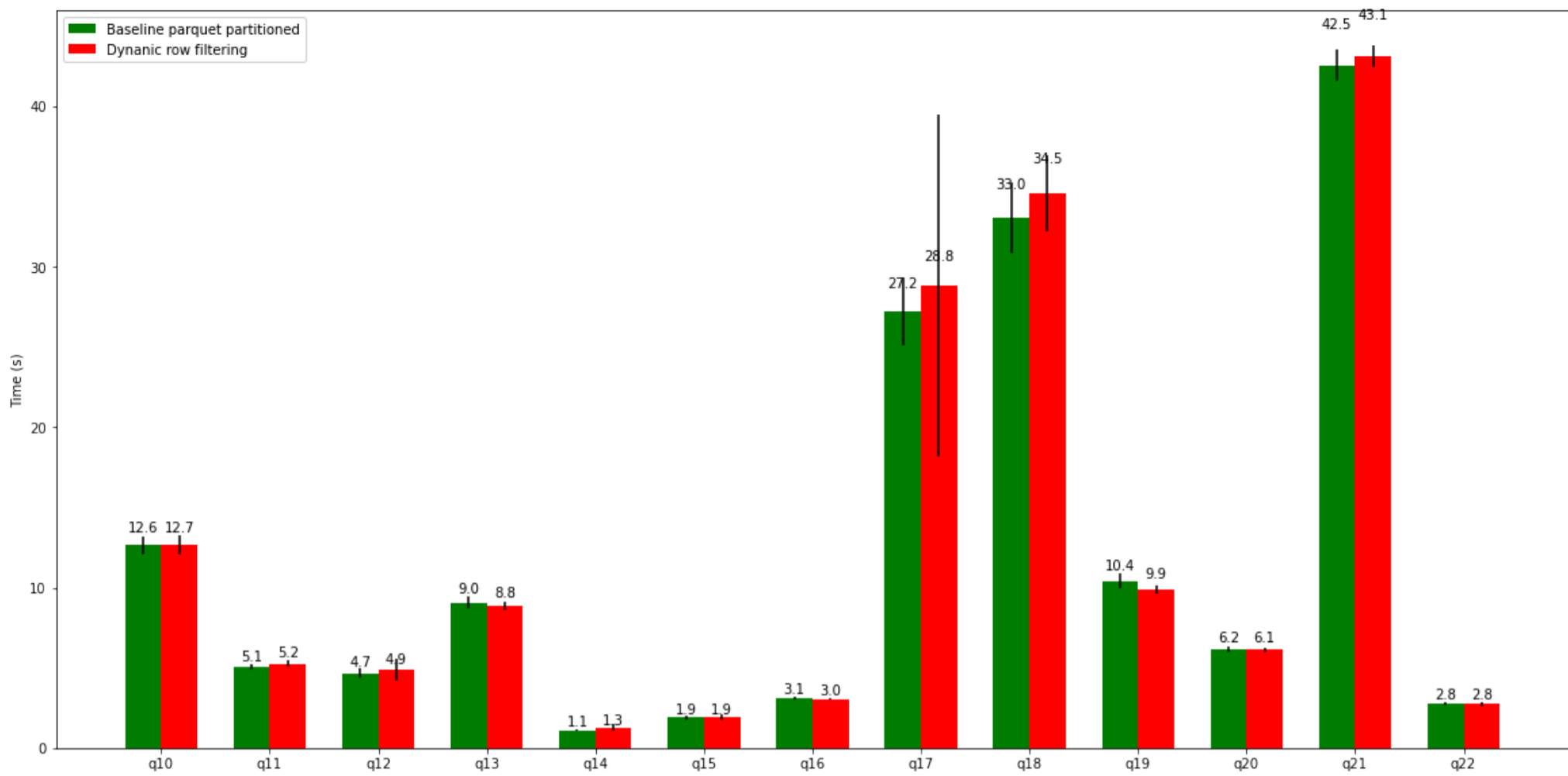
Insert Comparison (DURATION)

Insert Comparison (CPU)

Insert Comparison (PEAK MEMORY)

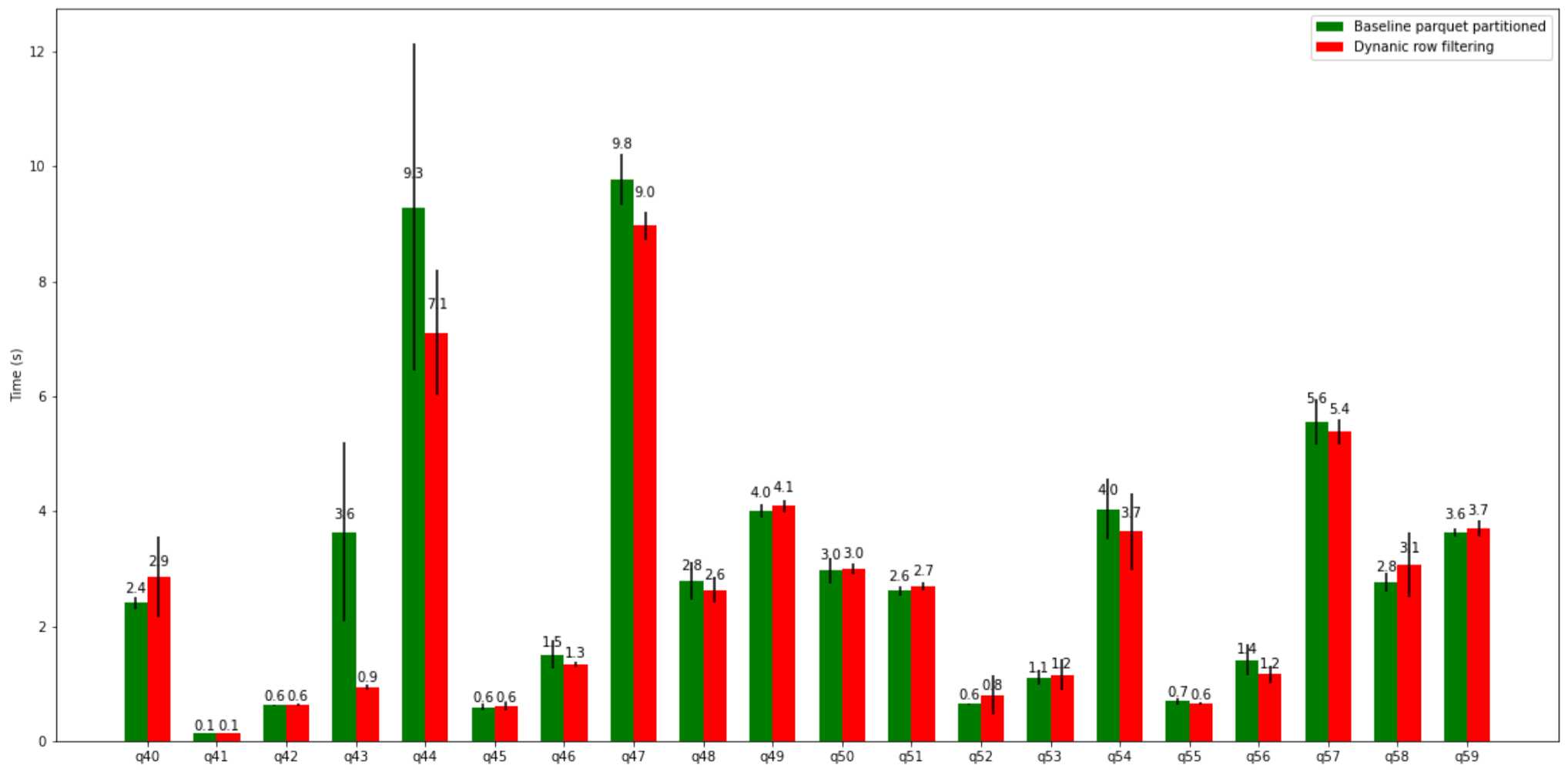
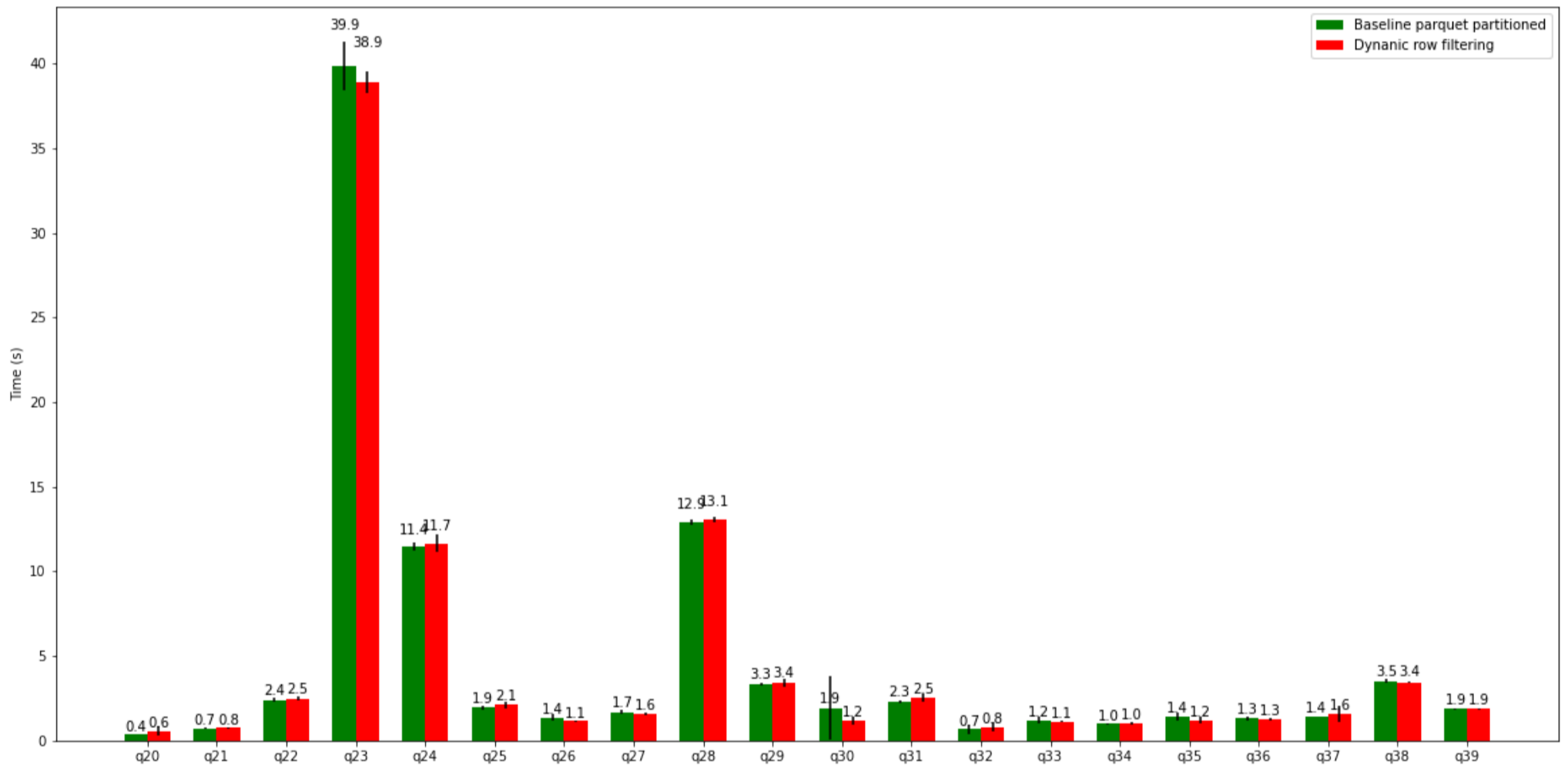
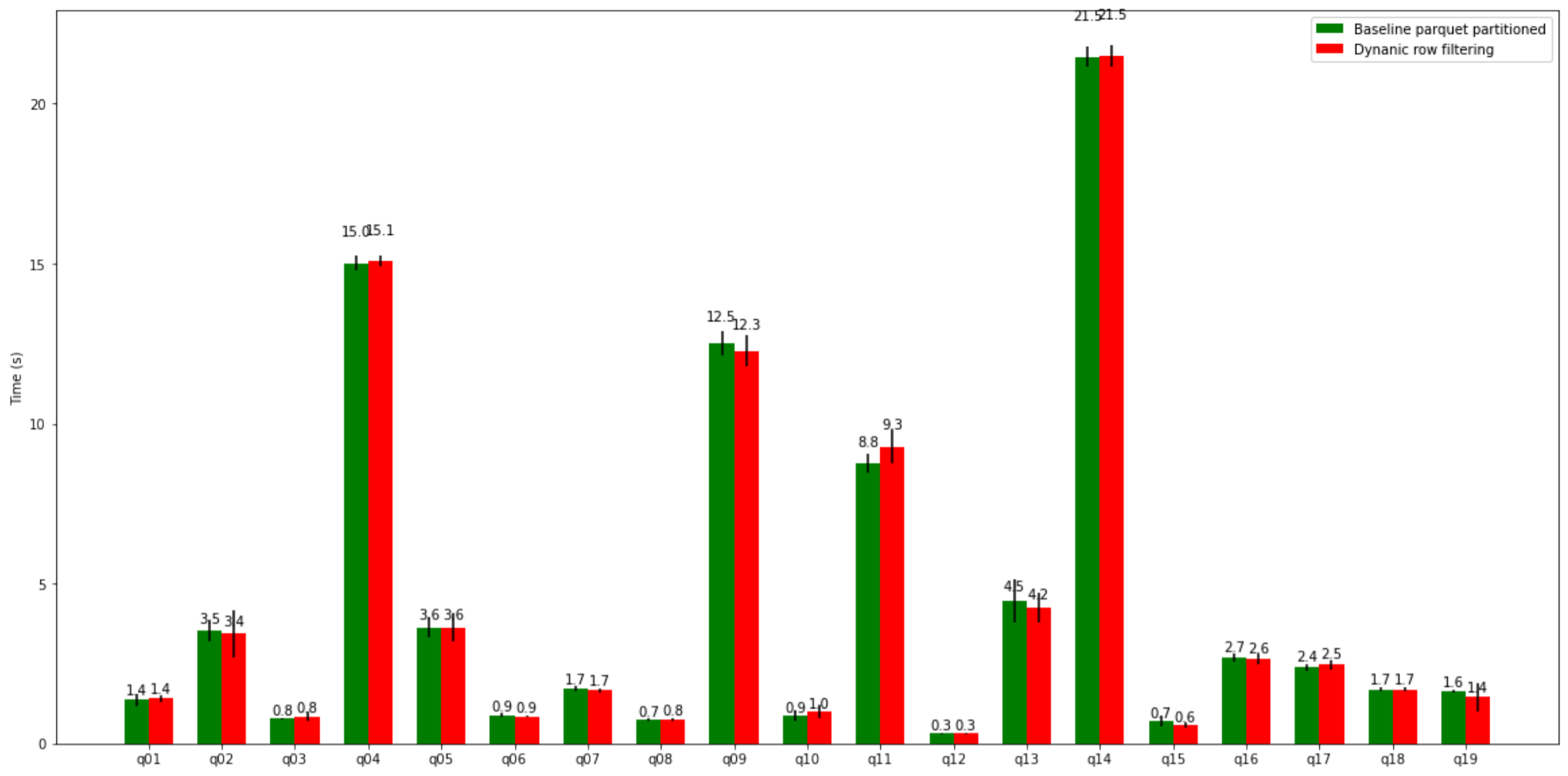
TPC-H Comparison (DURATION)

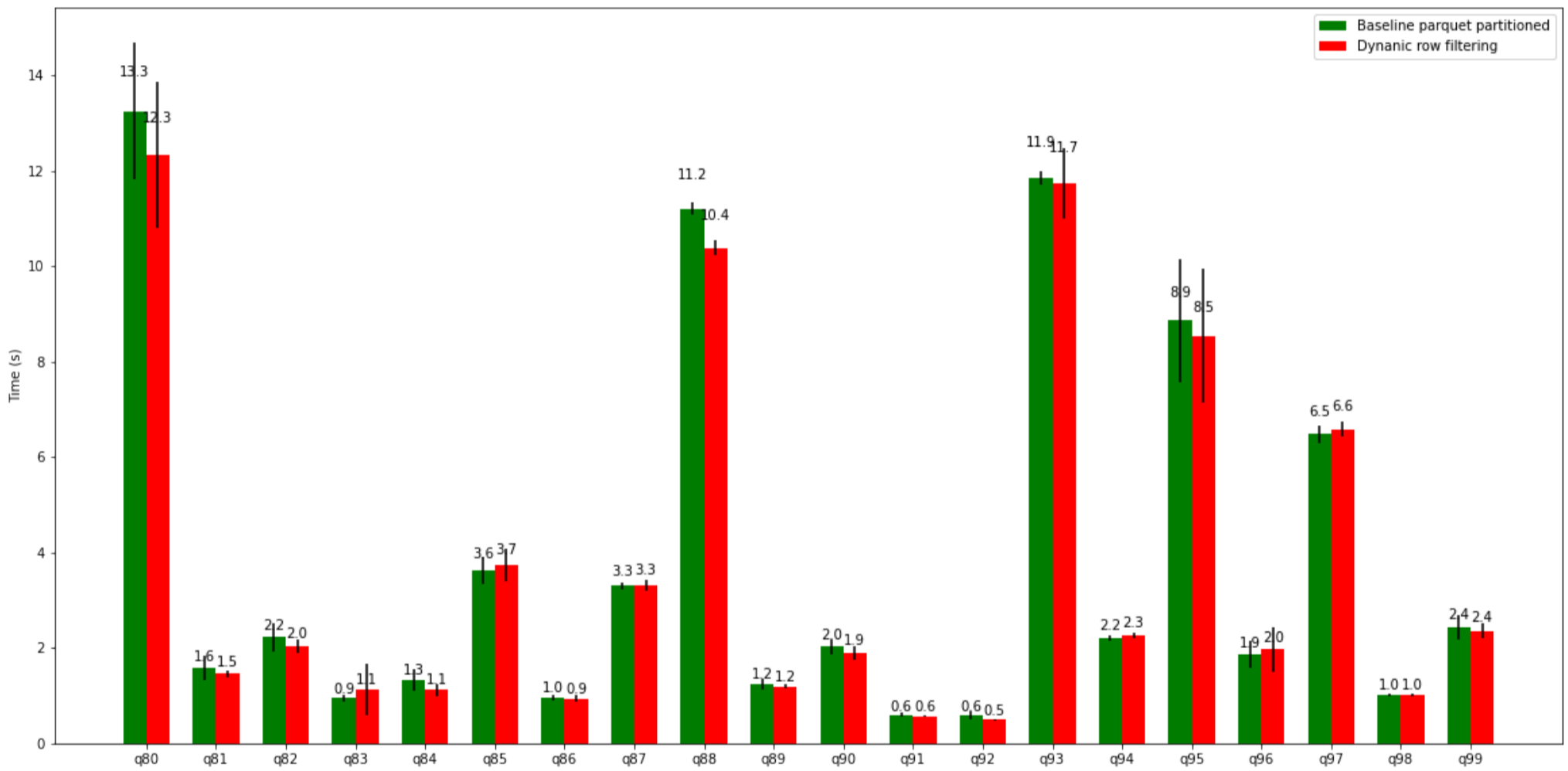
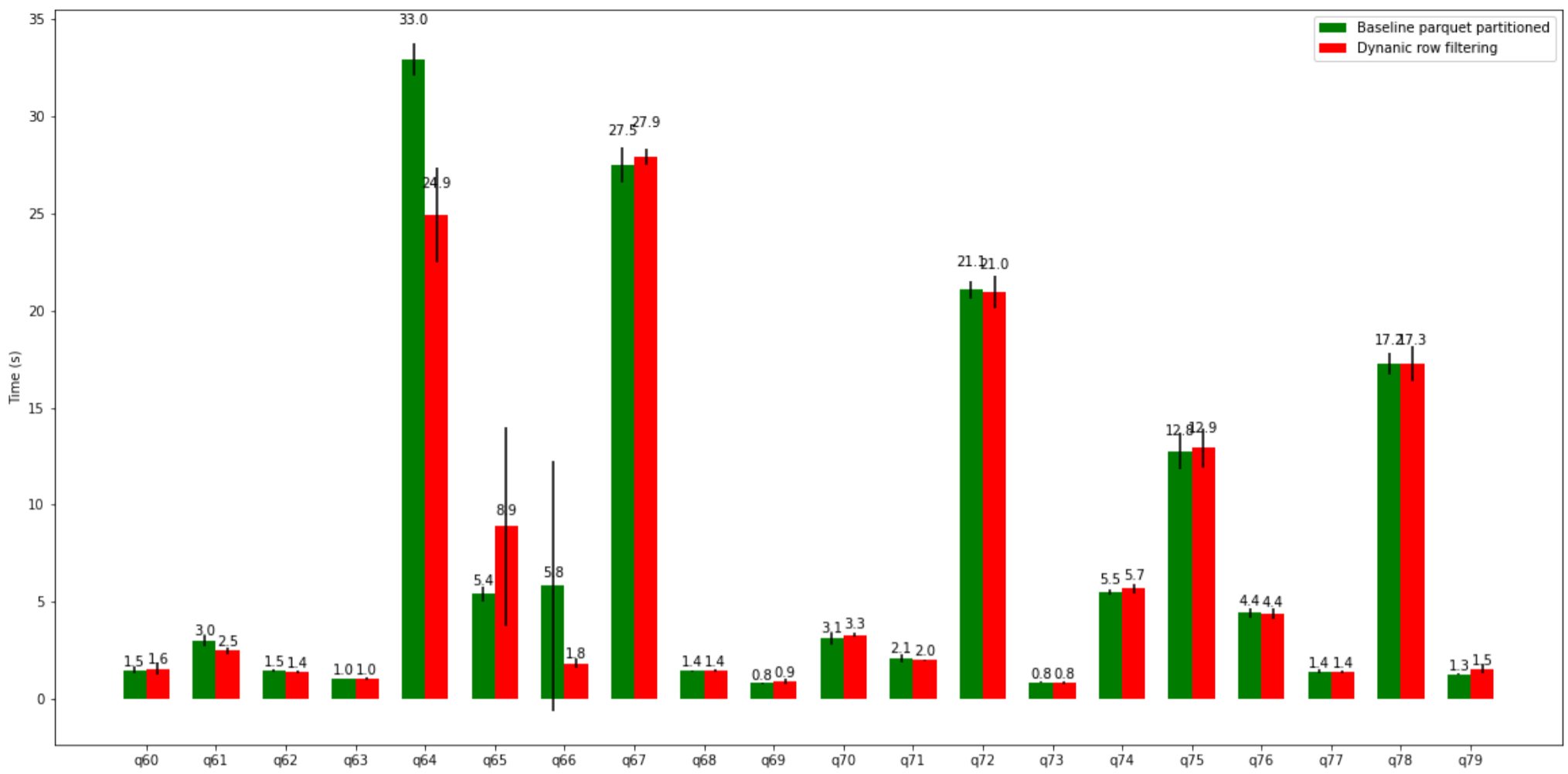




query	Baseline parquet partitioned mean	Baseline parquet partitioned std.dev	Dynamic row filtering mean	Dynamic row filtering std.dev
0 presto/tpch: q01	6.092667	0.225379	5.931167	0.117741
1 presto/tpch: q02	8.340000	0.211926	8.992167	1.736871
2 presto/tpch: q03	12.718500	0.383185	12.736167	0.302090
3 presto/tpch: q04	19.367333	0.514406	19.326500	0.484501
4 presto/tpch: q05	18.315000	1.409257	17.447333	0.365349
5 presto/tpch: q06	0.941333	0.032104	1.136500	0.379398
6 presto/tpch: q07	7.332667	0.138363	7.333833	0.236144
7 presto/tpch: q08	12.886333	0.126973	13.246500	0.638789
8 presto/tpch: q09	43.673333	0.822622	42.909333	1.035434
9 presto/tpch: q10	12.639667	0.528738	12.659333	0.598710
10 presto/tpch: q11	5.060333	0.147927	5.249333	0.206465
11 presto/tpch: q12	4.672333	0.302753	4.867333	0.655934
12 presto/tpch: q13	9.040667	0.373641	8.844500	0.259473
13 presto/tpch: q14	1.122000	0.037794	1.266167	0.209101
14 presto/tpch: q15	1.886500	0.113583	1.914500	0.194720
15 presto/tpch: q16	3.122000	0.070217	3.044500	0.047886
16 presto/tpch: q17	27.205500	2.107971	28.800500	10.675668
17 presto/tpch: q18	33.023500	2.216049	34.534667	2.368884
18 presto/tpch: q19	10.407167	0.483983	9.901833	0.251559
19 presto/tpch: q20	6.151833	0.147544	6.120167	0.136555
20 presto/tpch: q21	42.535833	0.960048	43.091000	0.675901
21 presto/tpch: q22	2.798500	0.086174	2.754667	0.142832

TPC-DS Comparison (DURATION)



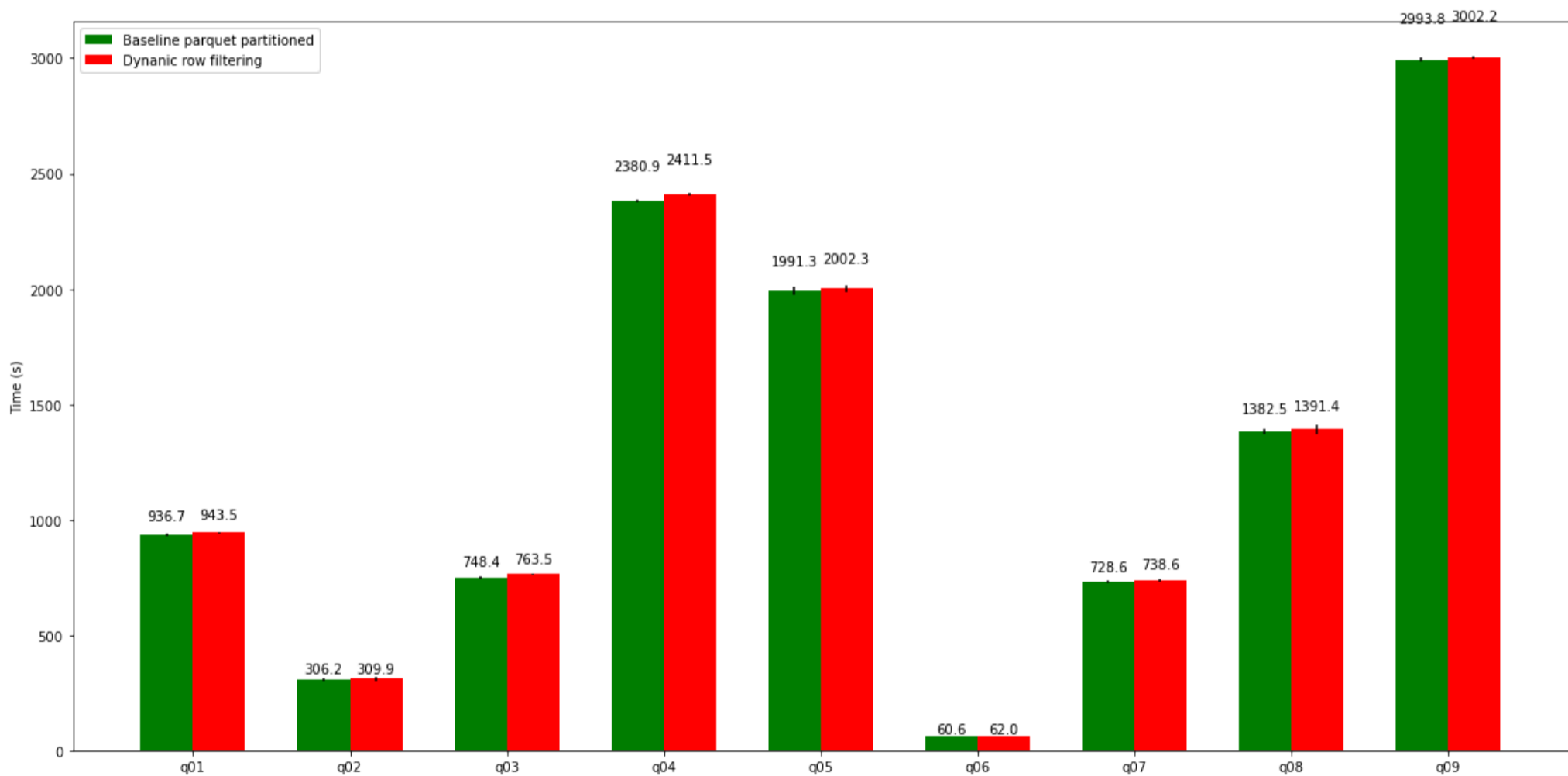


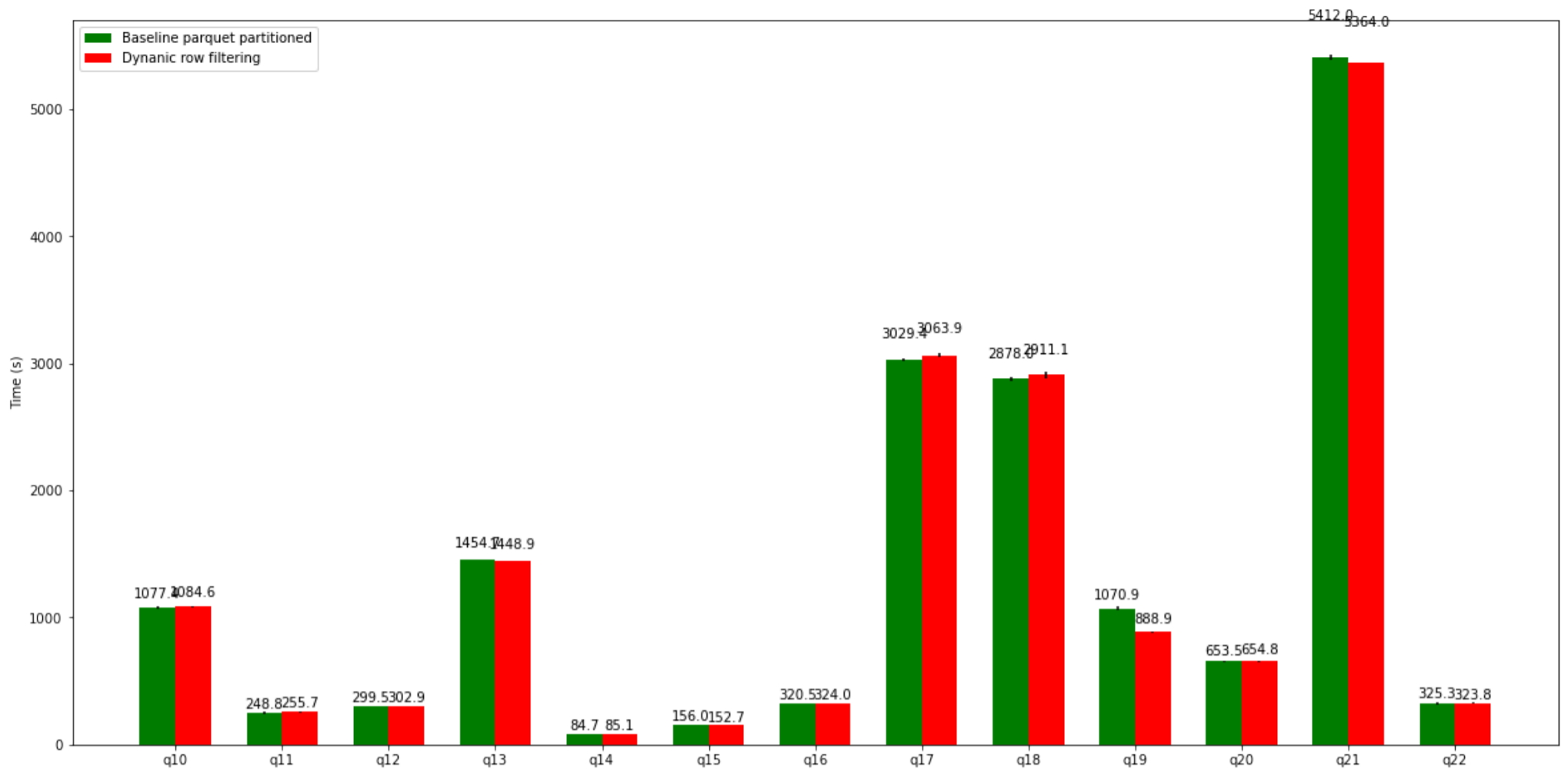
query	Baseline parquet partitioned mean	Baseline parquet partitioned std.dev	Dynamic row filtering mean	Dynamic row filtering std.dev
0 presto/tpcds: q01	1.379167	0.190555	1.409667	0.095670
1 presto/tpcds: q02	3.523500	0.329940	3.429833	0.731225
2 presto/tpcds: q03	0.773333	0.038656	0.844500	0.146620
3 presto/tpcds: q04	15.022167	0.215204	15.076833	0.175975
4 presto/tpcds: q05	3.638167	0.308238	3.625333	0.436423
5 presto/tpcds: q06	0.892000	0.074372	0.852833	0.015329
6 presto/tpcds: q07	1.724167	0.080016	1.670000	0.055220
7 presto/tpcds: q08	0.745833	0.036652	0.765333	0.046085
8 presto/tpcds: q09	12.519333	0.377603	12.278000	0.501090
9 presto/tpcds: q10	0.868500	0.174135	1.003167	0.198523
10 presto/tpcds: q11	8.768833	0.287819	9.287167	0.522064
11 presto/tpcds: q12	0.326667	0.018907	0.323500	0.016183
12 presto/tpcds: q13	4.471167	0.681929	4.234667	0.460617
13 presto/tpcds: q14	21.472500	0.333899	21.493833	0.333900
14 presto/tpcds: q15	0.701833	0.176551	0.577000	0.090823
15 presto/tpcds: q16	2.675667	0.129611	2.646333	0.162351
16 presto/tpcds: q17	2.378333	0.093172	2.461500	0.132192
17 presto/tpcds: q18	1.693167	0.055614	1.691000	0.067764
18 presto/tpcds: q19	1.627333	0.034069	1.446667	0.433025

	query	Baseline parquet partitioned mean	Baseline parquet partitioned std.dev	Dynanic row filtering mean	Dynanic row filtering std.dev
19	presto/tpcds: q20	0.380167	0.036340	0.561333	0.275174
20	presto/tpcds: q21	0.724833	0.017348	0.759667	0.032004
21	presto/tpcds: q22	2.386833	0.126574	2.489667	0.148360
22	presto/tpcds: q23	39.863000	1.433725	38.918500	0.665346
23	presto/tpcds: q24	11.449833	0.238395	11.651167	0.516873
24	presto/tpcds: q25	1.945667	0.092314	2.133333	0.196863
25	presto/tpcds: q26	1.375167	0.169747	1.145500	0.063321
26	presto/tpcds: q27	1.696000	0.131510	1.585000	0.088893
27	presto/tpcds: q28	12.909500	0.146246	13.052667	0.174132
28	presto/tpcds: q29	3.316500	0.075794	3.415167	0.260190
29	presto/tpcds: q30	1.924833	1.848898	1.182333	0.270406
30	presto/tpcds: q31	2.311833	0.079136	2.528833	0.211305
31	presto/tpcds: q32	0.688167	0.284099	0.801167	0.293304
32	presto/tpcds: q33	1.217333	0.183278	1.140000	0.063665
33	presto/tpcds: q34	0.997833	0.016964	1.045000	0.078026
34	presto/tpcds: q35	1.434000	0.228040	1.197833	0.182179
35	presto/tpcds: q36	1.323000	0.112380	1.267833	0.049954
36	presto/tpcds: q37	1.405500	0.024477	1.593333	0.463170
37	presto/tpcds: q38	3.512667	0.131451	3.446833	0.062117
38	presto/tpcds: q39	1.890333	0.032290	1.883833	0.038577
39	presto/tpcds: q40	2.406000	0.103046	2.854833	0.703715
40	presto/tpcds: q41	0.134000	0.005099	0.136667	0.009688
41	presto/tpcds: q42	0.625000	0.010621	0.625833	0.019914
42	presto/tpcds: q43	3.634000	1.561746	0.935000	0.051749
43	presto/tpcds: q44	9.286667	2.853155	7.111000	1.087407
44	presto/tpcds: q45	0.593167	0.063294	0.605667	0.068445
45	presto/tpcds: q46	1.505833	0.243986	1.330333	0.040088
46	presto/tpcds: q47	9.774500	0.451322	8.973333	0.247771
47	presto/tpcds: q48	2.787333	0.334649	2.628667	0.216032
48	presto/tpcds: q49	4.001333	0.121489	4.087833	0.098765
49	presto/tpcds: q50	2.968667	0.218947	2.987167	0.095688
50	presto/tpcds: q51	2.612333	0.076463	2.696667	0.071718
51	presto/tpcds: q52	0.644667	0.016884	0.803833	0.335338
52	presto/tpcds: q53	1.100500	0.127324	1.152833	0.267807
53	presto/tpcds: q54	4.031833	0.529364	3.650333	0.666858
54	presto/tpcds: q55	0.691167	0.065457	0.649167	0.025199
55	presto/tpcds: q56	1.405667	0.271748	1.165833	0.151438
56	presto/tpcds: q57	5.552500	0.408845	5.379667	0.222167
57	presto/tpcds: q58	2.762000	0.153387	3.069000	0.553279
58	presto/tpcds: q59	3.627000	0.072658	3.698333	0.142990
59	presto/tpcds: q60	1.476667	0.183780	1.553667	0.288689
60	presto/tpcds: q61	2.999833	0.273050	2.479667	0.174779
61	presto/tpcds: q62	1.473667	0.082774	1.377500	0.071553
62	presto/tpcds: q63	1.046833	0.023181	1.039333	0.046928
63	presto/tpcds: q64	32.959333	0.822957	24.927333	2.464164
64	presto/tpcds: q65	5.403667	0.394773	8.902667	5.118887
65	presto/tpcds: q66	5.812667	6.453638	1.832833	0.248017
66	presto/tpcds: q67	27.517000	0.889710	27.949500	0.423262
67	presto/tpcds: q68	1.422667	0.029173	1.434833	0.061707
68	presto/tpcds: q69	0.798667	0.033237	0.895333	0.134797
69	presto/tpcds: q70	3.122500	0.311573	3.279000	0.113564
70	presto/tpcds: q71	2.092000	0.213099	1.992833	0.034348
71	presto/tpcds: q72	21.081167	0.457680	20.969500	0.851843
72	presto/tpcds: q73	0.842000	0.028914	0.837000	0.044322
73	presto/tpcds: q74	5.517333	0.146280	5.690167	0.248048
74	presto/tpcds: q75	12.770333	0.912569	12.917833	1.029106
75	presto/tpcds: q76	4.445500	0.247255	4.397500	0.269599

	query	Baseline parquet partitioned mean	Baseline parquet partitioned std.dev	Dynanic row filtering mean	Dynanic row filtering std.dev
76	presto/tpcds: q77	1.408000	0.082007	1.399667	0.051833
77	presto/tpcds: q78	17.245000	0.557246	17.262333	0.935285
78	presto/tpcds: q79	1.259167	0.035278	1.529167	0.240358
79	presto/tpcds: q80	13.258667	1.432416	12.333000	1.535773
80	presto/tpcds: q81	1.578500	0.259802	1.469000	0.071540
81	presto/tpcds: q82	2.222667	0.284563	2.041833	0.132278
82	presto/tpcds: q83	0.946000	0.069719	1.131167	0.538514
83	presto/tpcds: q84	1.324833	0.219273	1.116500	0.122546
84	presto/tpcds: q85	3.639000	0.283375	3.737000	0.342476
85	presto/tpcds: q86	0.955167	0.066511	0.944500	0.078854
86	presto/tpcds: q87	3.303167	0.062691	3.308167	0.119284
87	presto/tpcds: q88	11.209833	0.130087	10.393333	0.163051
88	presto/tpcds: q89	1.244167	0.123560	1.196000	0.049860
89	presto/tpcds: q90	2.033667	0.152374	1.904667	0.137053
90	presto/tpcds: q91	0.601500	0.038527	0.575667	0.016609
91	presto/tpcds: q92	0.588500	0.083292	0.497333	0.012754
92	presto/tpcds: q93	11.856667	0.147787	11.741000	0.726247
93	presto/tpcds: q94	2.211833	0.060055	2.269333	0.062752
94	presto/tpcds: q95	8.870833	1.296428	8.549500	1.392176
95	presto/tpcds: q96	1.867167	0.269727	1.970833	0.464484
96	presto/tpcds: q97	6.487000	0.188445	6.583333	0.161154
97	presto/tpcds: q98	1.018000	0.018633	1.022000	0.032564
98	presto/tpcds: q99	2.439167	0.252627	2.363333	0.145177

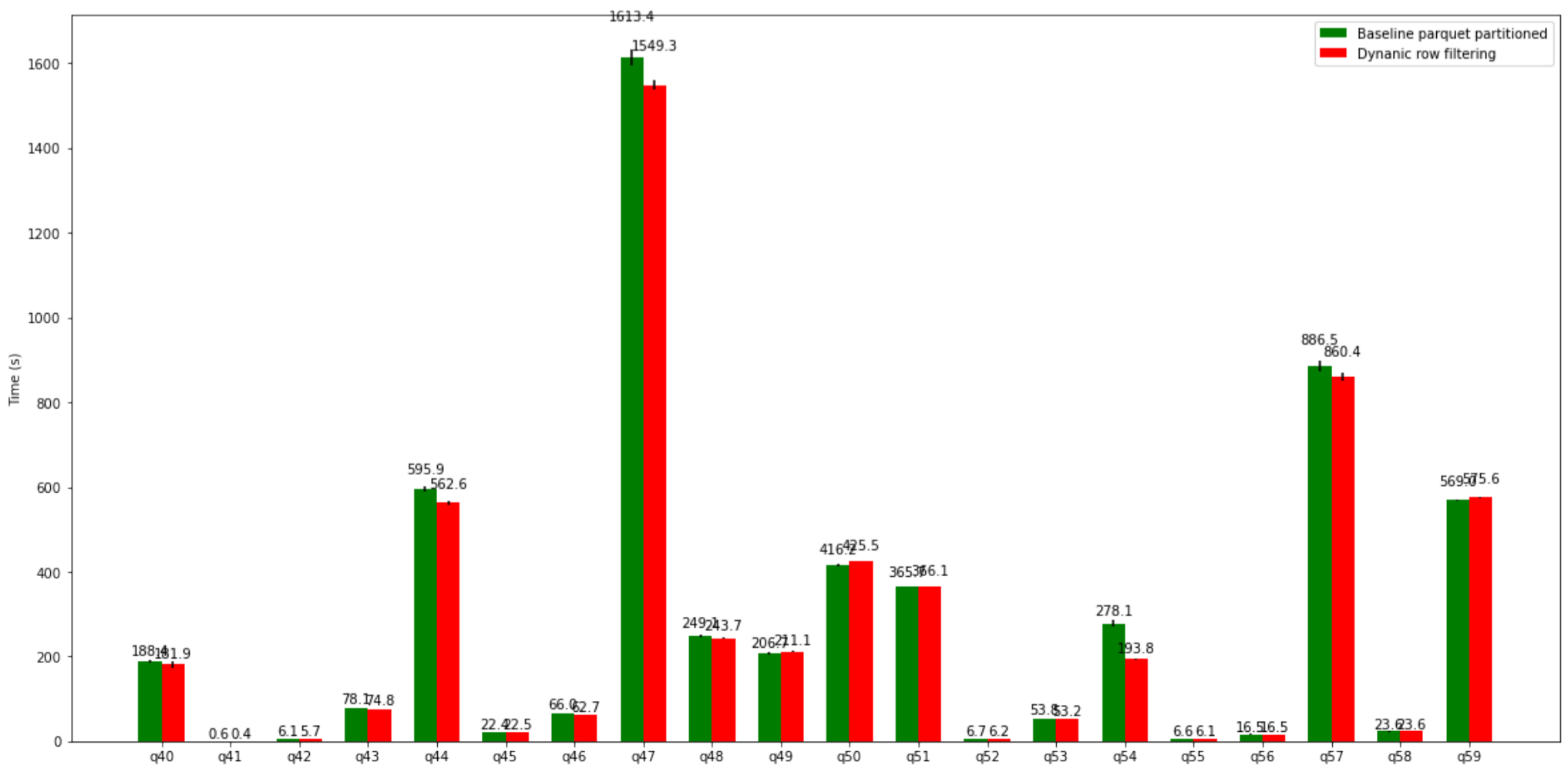
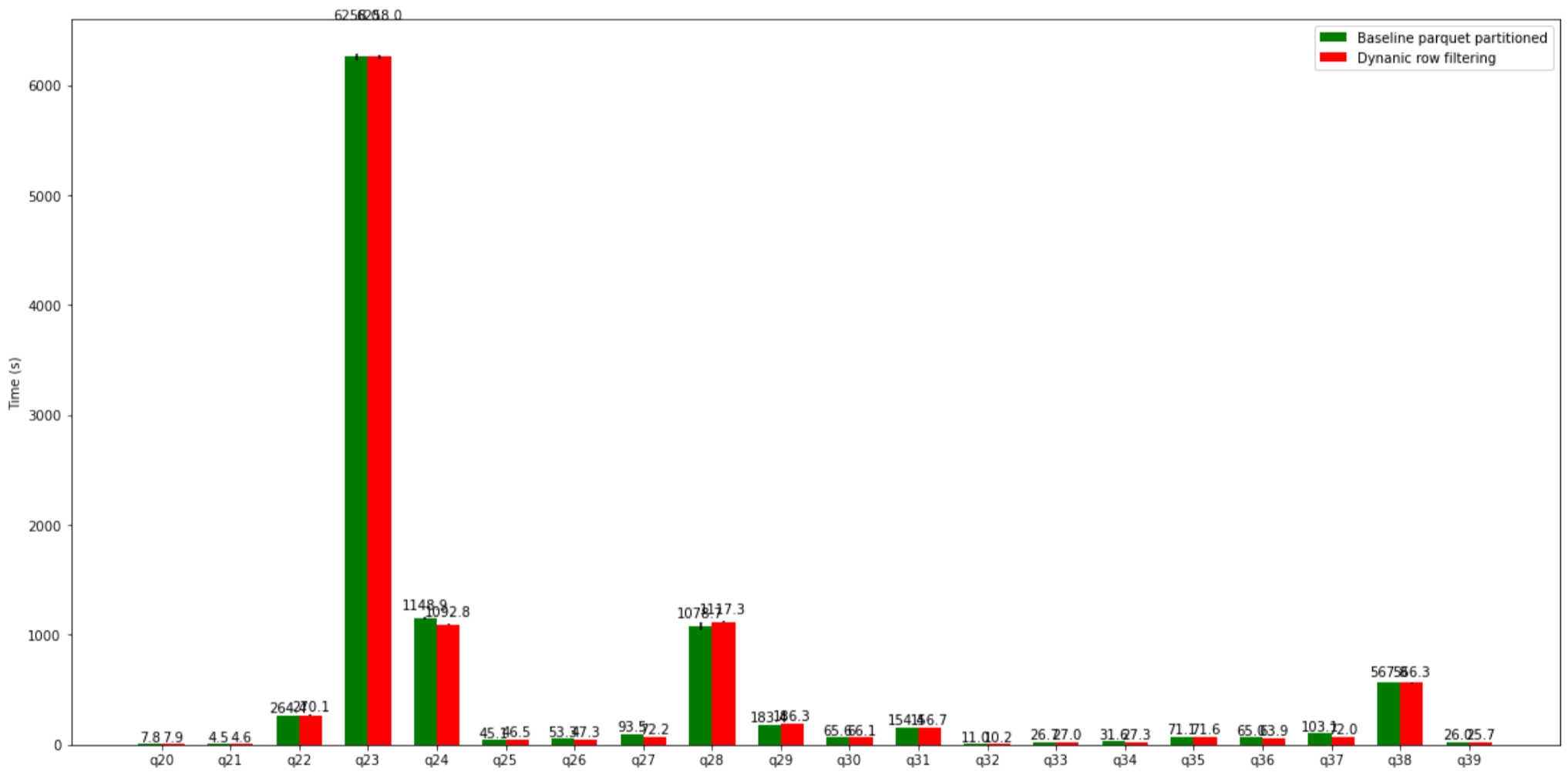
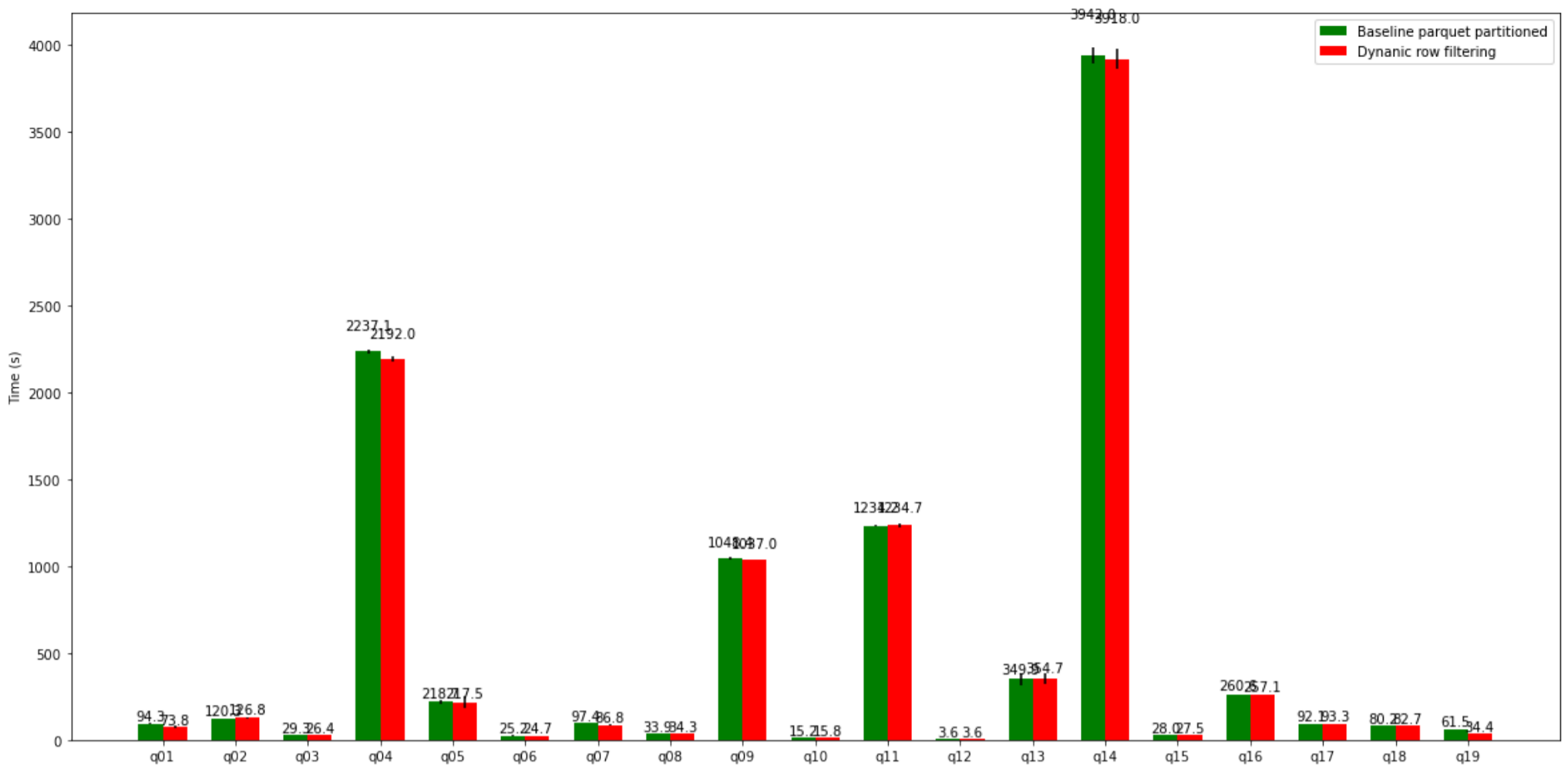
TPC-H Comparison (CPU)

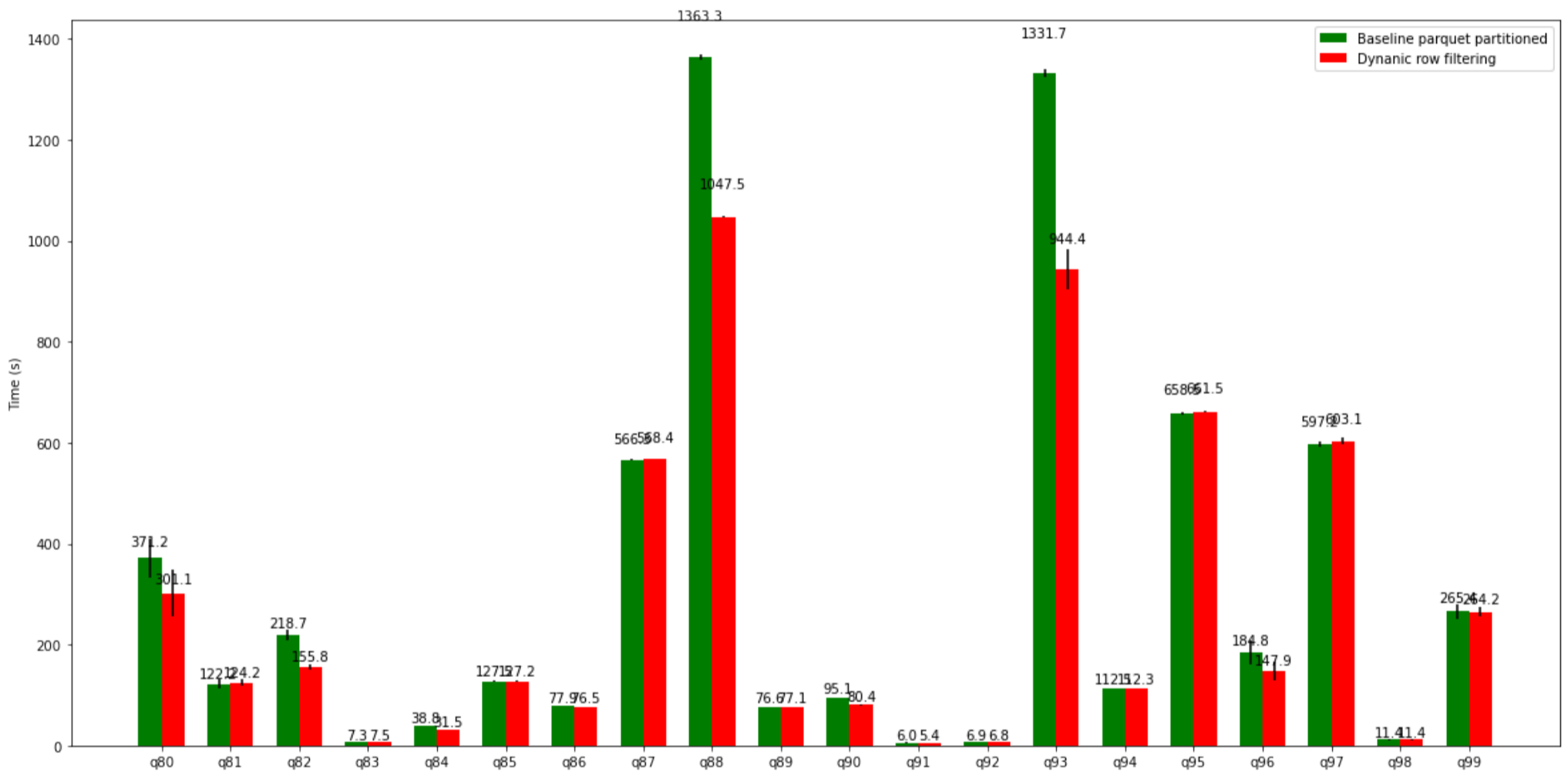
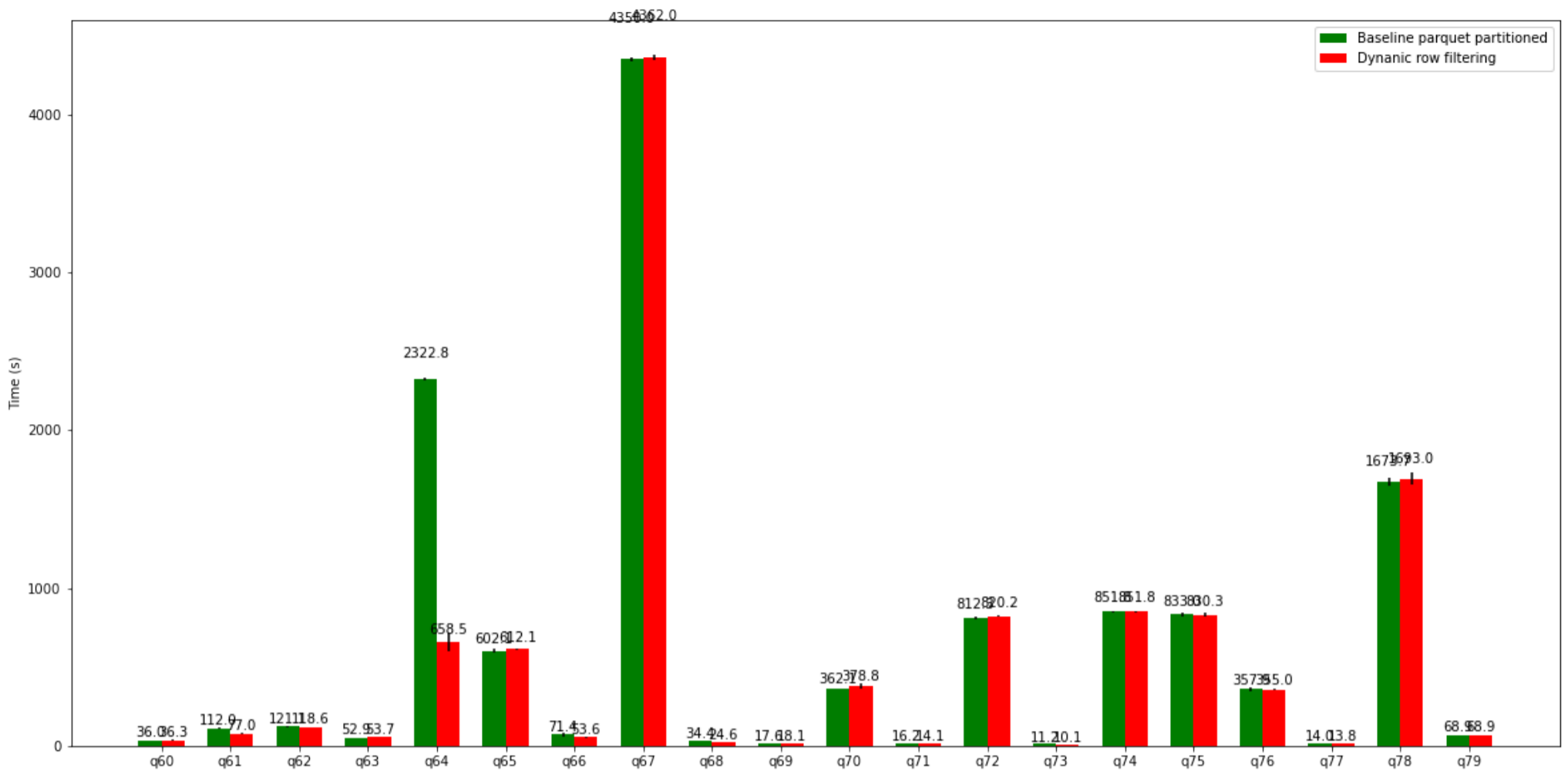




query	Baseline parquet partitioned mean	Baseline parquet partitioned std.dev	Dynamic row filtering mean	Dynamic row filtering std.dev
0 presto/tpch: q01	936.7	5.530642	943.5	2.883748
1 presto/tpch: q02	306.2	6.805880	309.9	7.375364
2 presto/tpch: q03	748.4	7.884161	763.5	2.362202
3 presto/tpch: q04	2380.9	5.398889	2411.5	5.097058
4 presto/tpch: q05	1991.3	17.552094	2002.3	13.887980
5 presto/tpch: q06	60.6	0.379473	62.0	0.309839
6 presto/tpch: q07	728.6	5.675209	738.6	6.071573
7 presto/tpch: q08	1382.5	9.810810	1391.4	21.643290
8 presto/tpch: q09	2993.8	9.222581	3002.2	5.935655
9 presto/tpch: q10	1077.4	8.019975	1084.6	3.844997
10 presto/tpch: q11	248.8	9.914837	255.7	8.062506
11 presto/tpch: q12	299.5	0.701427	302.9	1.224745
12 presto/tpch: q13	1454.7	2.236962	1448.9	1.583667
13 presto/tpch: q14	84.7	0.244949	85.1	0.797496
14 presto/tpch: q15	156.0	1.200000	152.7	0.328634
15 presto/tpch: q16	320.5	0.589915	324.0	0.536656
16 presto/tpch: q17	3029.4	7.436128	3063.9	13.521982
17 presto/tpch: q18	2878.0	13.516212	2911.1	24.189502
18 presto/tpch: q19	1070.9	12.887669	888.9	4.720593
19 presto/tpch: q20	653.5	5.451972	654.8	2.619924
20 presto/tpch: q21	5412.0	18.590320	5364.0	0.000000
21 presto/tpch: q22	325.3	8.780661	323.8	5.874691

TPC-DS Comparison (CPU)



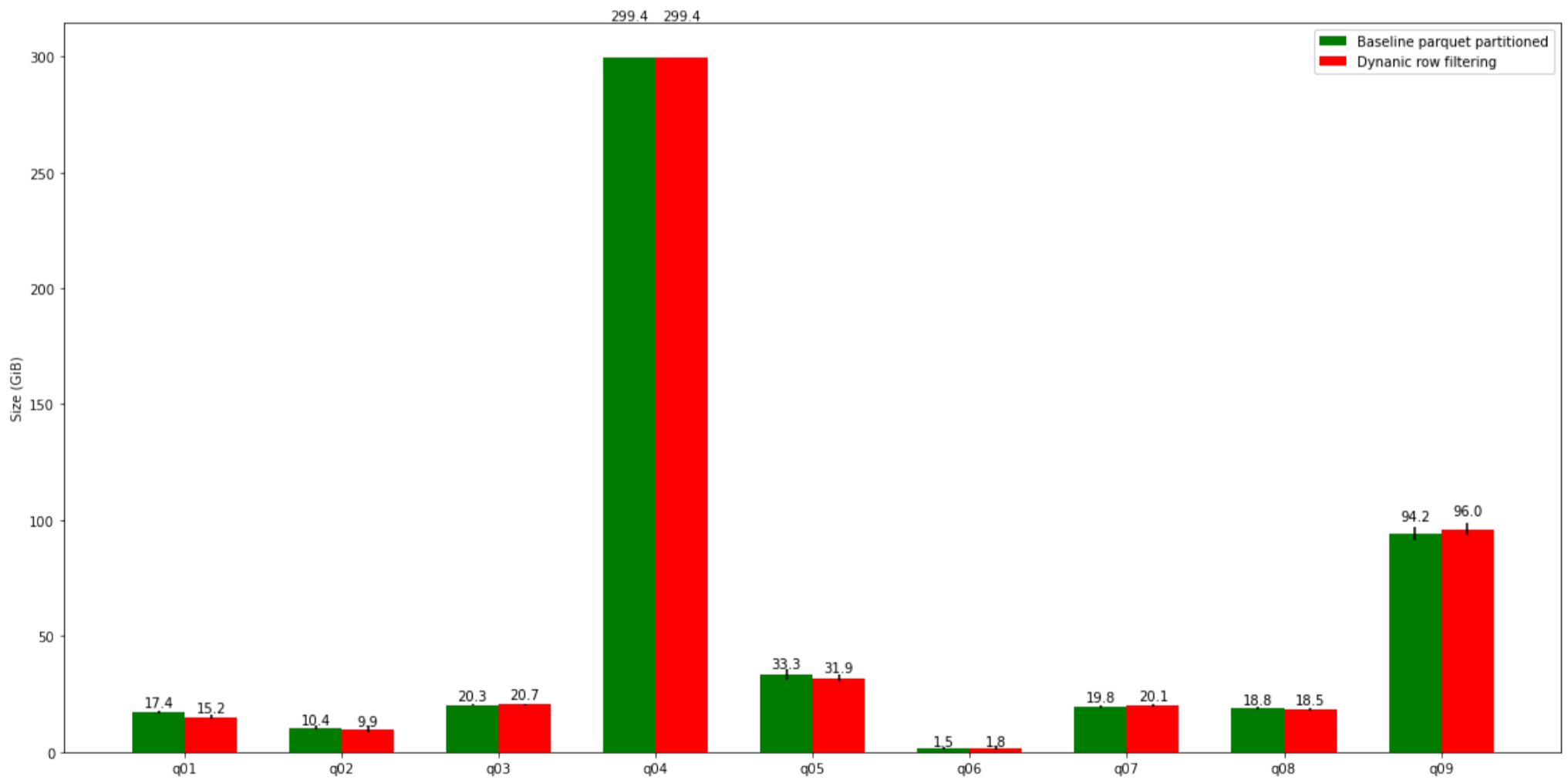


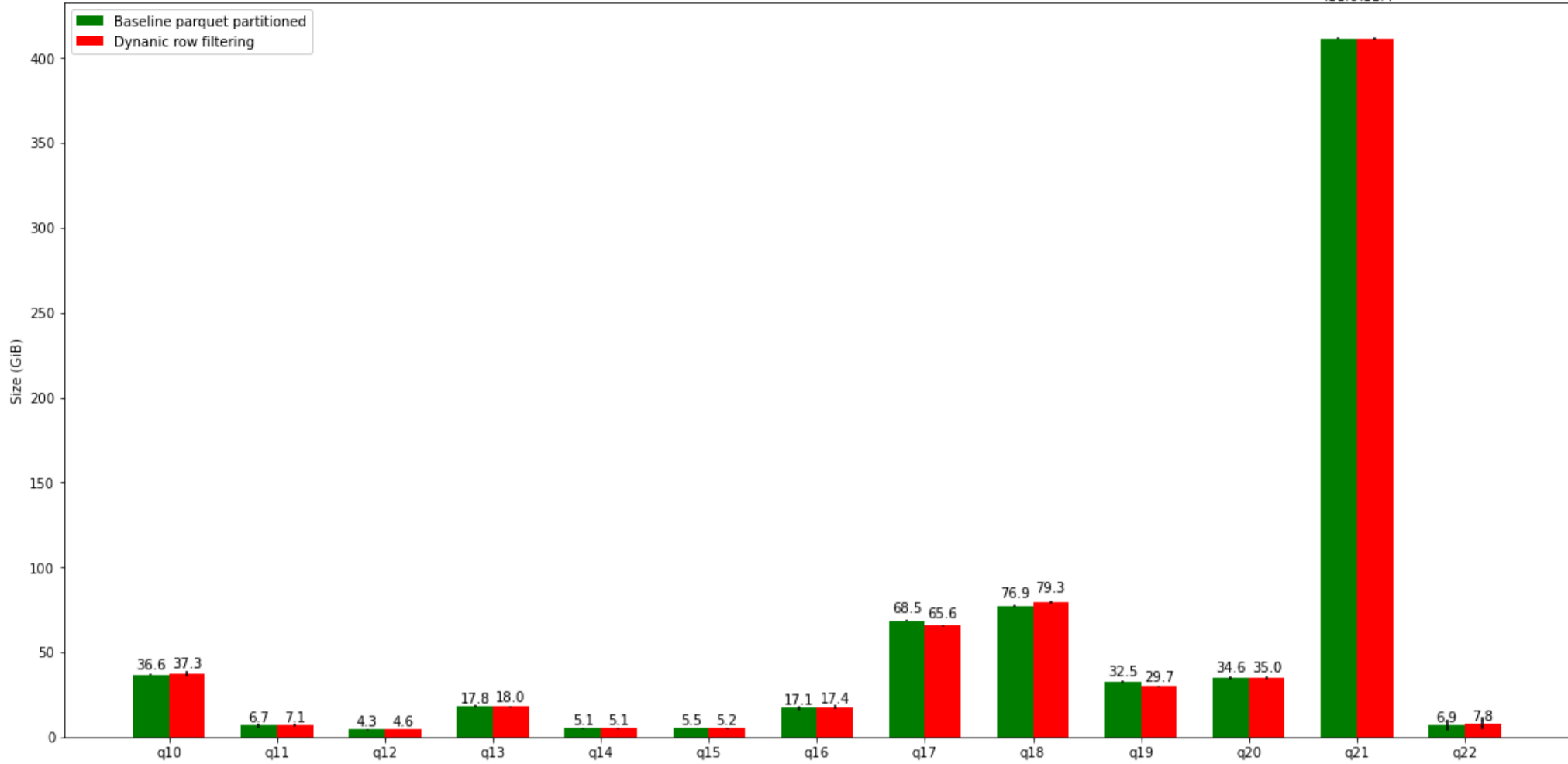
query	Baseline parquet partitioned mean	Baseline parquet partitioned std.dev	Dynamic row filtering mean	Dynamic row filtering std.dev
0 presto/tpcds: q01	94.300000	2.193627	73.800000	8.094443
1 presto/tpcds: q02	120.300000	0.827043	126.800000	3.652944
2 presto/tpcds: q03	29.251667	0.177473	26.353333	0.196129
3 presto/tpcds: q04	2237.100000	12.123861	2192.000000	15.450049
4 presto/tpcds: q05	218.700000	10.864806	217.500000	35.554747
5 presto/tpcds: q06	25.175000	0.895785	24.660000	0.036332
6 presto/tpcds: q07	97.400000	0.309839	86.800000	0.619677
7 presto/tpcds: q08	33.851667	0.475917	34.275000	0.478529
8 presto/tpcds: q09	1048.400000	8.100370	1037.000000	2.449490
9 presto/tpcds: q10	15.210000	0.058310	15.773333	0.090701
10 presto/tpcds: q11	1234.200000	3.035787	1234.700000	10.715783
11 presto/tpcds: q12	3.555000	0.027386	3.610000	0.018974
12 presto/tpcds: q13	349.900000	36.471742	354.700000	30.323258
13 presto/tpcds: q14	3942.000000	44.090815	3918.000000	57.674951
14 presto/tpcds: q15	28.028333	0.327440	27.493333	0.137937
15 presto/tpcds: q16	260.600000	1.179830	257.100000	0.501996
16 presto/tpcds: q17	92.100000	0.501996	93.300000	0.328634
17 presto/tpcds: q18	80.200000	0.309839	82.700000	0.244949
18 presto/tpcds: q19	61.540000	1.942987	34.420000	0.865540

	query	Baseline parquet partitioned mean	Baseline parquet partitioned std.dev	Dynanic row filtering mean	Dynanic row filtering std.dev
19	presto/tpcds: q20	7.828333	0.027869	7.906667	0.045898
20	presto/tpcds: q21	4.498333	0.021370	4.635000	0.022583
21	presto/tpcds: q22	264.400000	1.501999	270.100000	0.701427
22	presto/tpcds: q23	6258.000000	27.099815	6258.000000	14.696938
23	presto/tpcds: q24	1148.900000	9.086914	1092.800000	6.138404
24	presto/tpcds: q25	45.100000	0.275681	46.520000	0.205037
25	presto/tpcds: q26	53.290000	0.166253	47.285000	0.445455
26	presto/tpcds: q27	93.500000	0.244949	72.200000	0.489898
27	presto/tpcds: q28	1078.700000	31.693217	1117.300000	7.808457
28	presto/tpcds: q29	183.400000	0.903327	186.300000	0.328634
29	presto/tpcds: q30	65.600000	0.619677	66.100000	1.628496
30	presto/tpcds: q31	154.400000	0.903327	156.700000	1.583667
31	presto/tpcds: q32	11.031667	0.250233	10.246667	1.730499
32	presto/tpcds: q33	26.670000	0.180444	26.968333	0.254670
33	presto/tpcds: q34	31.620000	0.128530	27.326667	0.236277
34	presto/tpcds: q35	71.100000	0.827043	71.600000	0.903327
35	presto/tpcds: q36	65.000000	0.619677	63.900000	0.328634
36	presto/tpcds: q37	103.100000	0.244949	72.000000	1.314534
37	presto/tpcds: q38	567.800000	4.764871	566.300000	4.669475
38	presto/tpcds: q39	26.026667	0.307939	25.678333	0.230427
39	presto/tpcds: q40	188.400000	2.308246	181.900000	7.845253
40	presto/tpcds: q41	0.598000	0.004099	0.423167	0.002137
41	presto/tpcds: q42	6.101667	0.043551	5.681667	0.060470
42	presto/tpcds: q43	78.100000	0.244949	74.800000	0.309839
43	presto/tpcds: q44	595.900000	7.293559	562.600000	3.788403
44	presto/tpcds: q45	22.383333	0.619763	22.463333	0.029439
45	presto/tpcds: q46	66.000000	0.929516	62.700000	0.909945
46	presto/tpcds: q47	1613.400000	19.248688	1549.300000	10.185284
47	presto/tpcds: q48	249.100000	3.206868	243.700000	0.883176
48	presto/tpcds: q49	206.700000	3.634831	211.100000	1.714643
49	presto/tpcds: q50	416.200000	2.592296	425.500000	0.589915
50	presto/tpcds: q51	365.700000	0.734847	366.100000	0.589915
51	presto/tpcds: q52	6.698333	0.031252	6.200000	0.046043
52	presto/tpcds: q53	53.838333	0.285336	53.158333	0.188299
53	presto/tpcds: q54	278.100000	7.336212	193.800000	1.819890
54	presto/tpcds: q55	6.590000	0.055136	6.068333	0.109438
55	presto/tpcds: q56	16.501667	0.244329	16.455000	0.190026
56	presto/tpcds: q57	886.500000	12.950830	860.400000	8.287822
57	presto/tpcds: q58	23.593333	0.692609	23.581667	0.390662
58	presto/tpcds: q59	569.000000	1.884675	575.600000	0.819756
59	presto/tpcds: q60	36.035000	0.279482	36.338333	0.436734
60	presto/tpcds: q61	112.000000	3.256992	77.000000	1.639512
61	presto/tpcds: q62	121.100000	1.282186	118.600000	1.594992
62	presto/tpcds: q63	52.925000	0.129422	53.653333	0.223935
63	presto/tpcds: q64	2322.800000	6.666933	658.500000	58.832746
64	presto/tpcds: q65	602.100000	10.244023	612.100000	1.440833
65	presto/tpcds: q66	71.400000	10.625253	53.558333	1.018419
66	presto/tpcds: q67	4350.000000	14.696938	4362.000000	14.696938
67	presto/tpcds: q68	34.415000	0.400936	24.638333	0.528031
68	presto/tpcds: q69	17.585000	0.156301	18.068333	0.164124
69	presto/tpcds: q70	362.100000	1.457395	378.800000	16.284962
70	presto/tpcds: q71	16.186667	0.391595	14.143333	0.109301
71	presto/tpcds: q72	812.300000	8.062506	820.200000	4.709140
72	presto/tpcds: q73	11.190000	0.094868	10.103333	0.121765
73	presto/tpcds: q74	851.800000	4.468557	851.800000	4.370812
74	presto/tpcds: q75	833.000000	12.686371	830.300000	13.076238
75	presto/tpcds: q76	357.900000	9.560544	355.000000	3.387034

	query	Baseline parquet partitioned mean	Baseline parquet partitioned std.dev	Dynanic row filtering mean	Dynanic row filtering std.dev
76	presto/tpcds: q77	13.953333	0.240139	13.803333	0.059889
77	presto/tpcds: q78	1673.700000	25.604609	1693.000000	35.208635
78	presto/tpcds: q79	68.900000	0.244949	68.900000	0.701427
79	presto/tpcds: q80	371.200000	38.209528	301.100000	46.456302
80	presto/tpcds: q81	122.200000	8.524787	124.200000	6.594543
81	presto/tpcds: q82	218.700000	10.452751	155.800000	5.428812
82	presto/tpcds: q83	7.340000	0.212885	7.475000	0.222239
83	presto/tpcds: q84	38.811667	0.255532	31.473333	0.090921
84	presto/tpcds: q85	127.500000	1.300769	127.200000	0.536656
85	presto/tpcds: q86	77.900000	0.244949	76.500000	0.629285
86	presto/tpcds: q87	566.300000	1.100909	568.400000	0.819756
87	presto/tpcds: q88	1363.300000	5.621032	1047.500000	1.913113
88	presto/tpcds: q89	76.600000	0.489898	77.100000	0.328634
89	presto/tpcds: q90	95.100000	0.501996	80.400000	0.536656
90	presto/tpcds: q91	5.993333	0.265229	5.421667	0.443054
91	presto/tpcds: q92	6.875000	0.070071	6.775000	0.060910
92	presto/tpcds: q93	1331.700000	7.577599	944.400000	39.685363
93	presto/tpcds: q94	112.500000	0.328634	112.300000	0.451664
94	presto/tpcds: q95	658.500000	1.999000	661.500000	1.728583
95	presto/tpcds: q96	184.800000	23.469129	147.900000	18.972717
96	presto/tpcds: q97	597.200000	5.675209	603.100000	6.855946
97	presto/tpcds: q98	11.393333	0.101127	11.401667	0.170577
98	presto/tpcds: q99	265.400000	15.552235	264.200000	8.993331

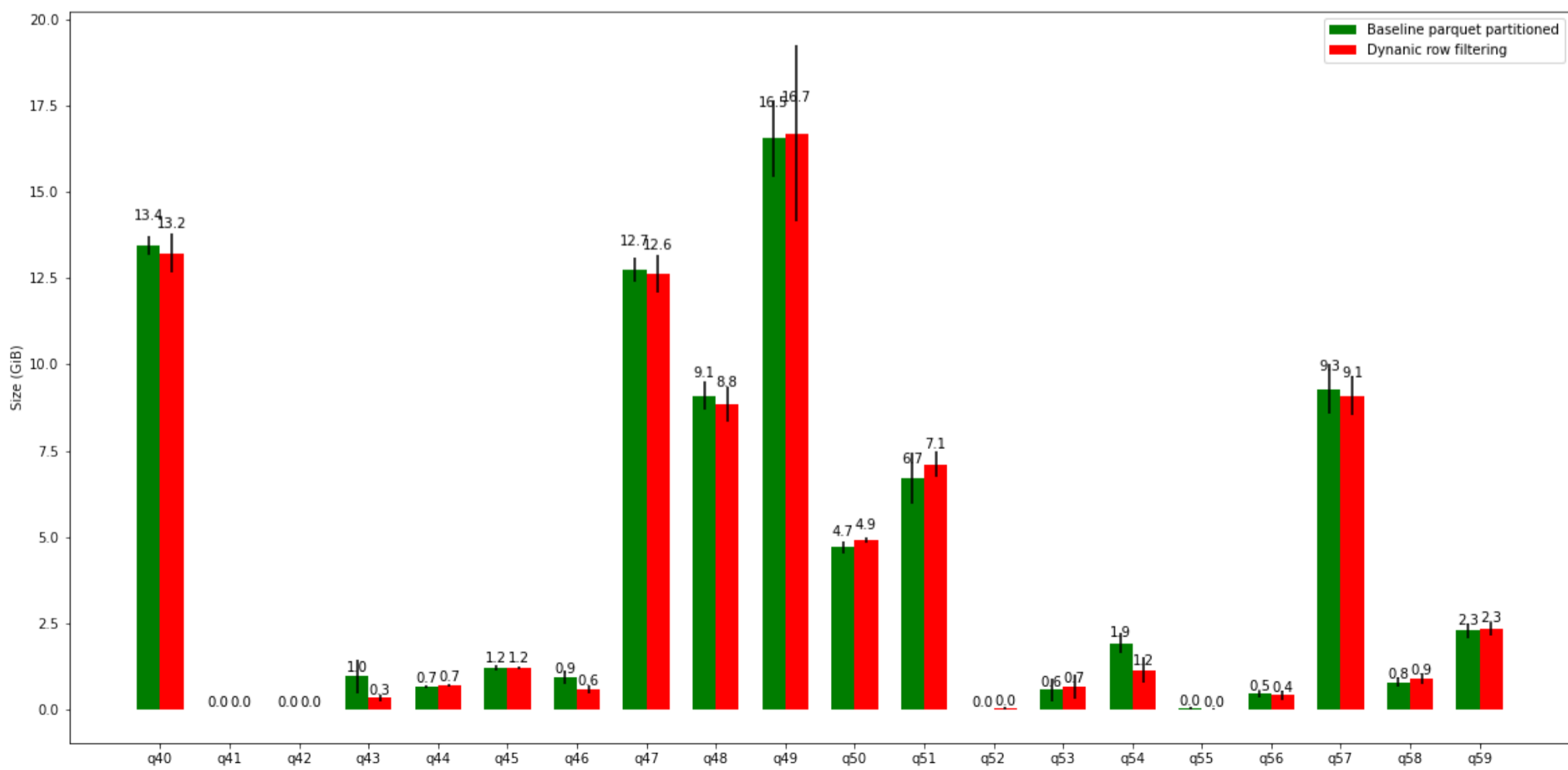
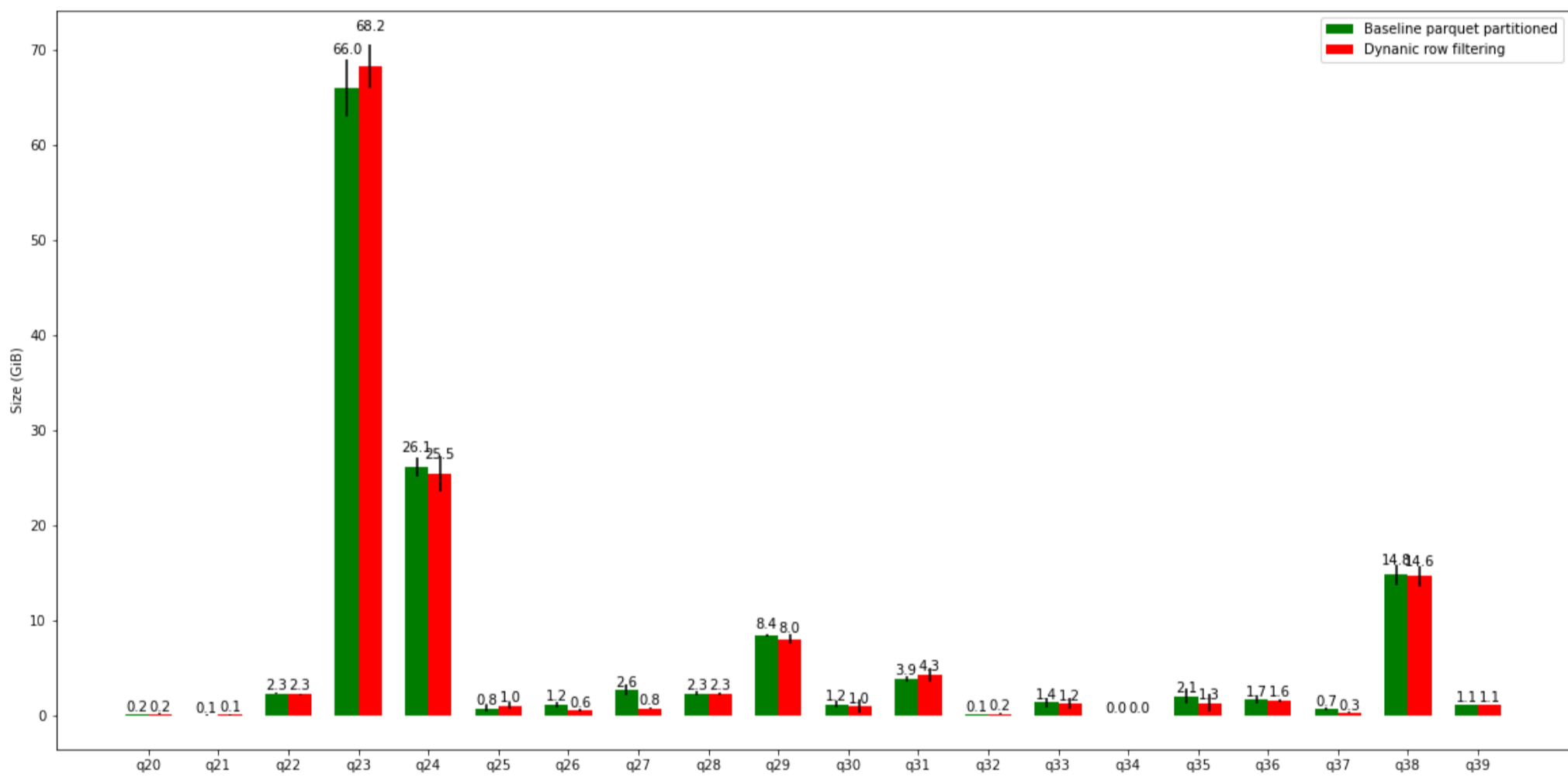
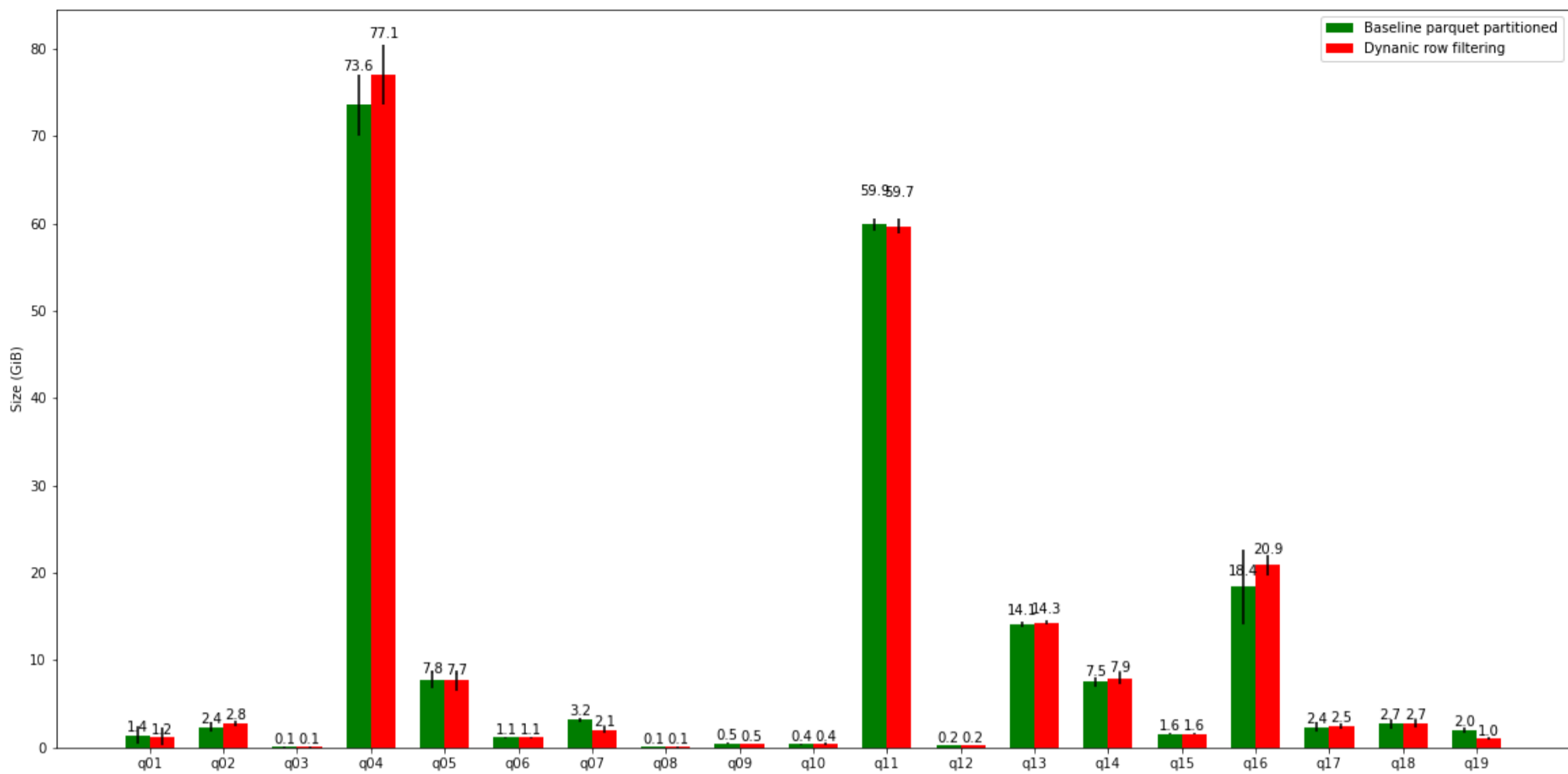
TPC-H Comparison (Peak memory)

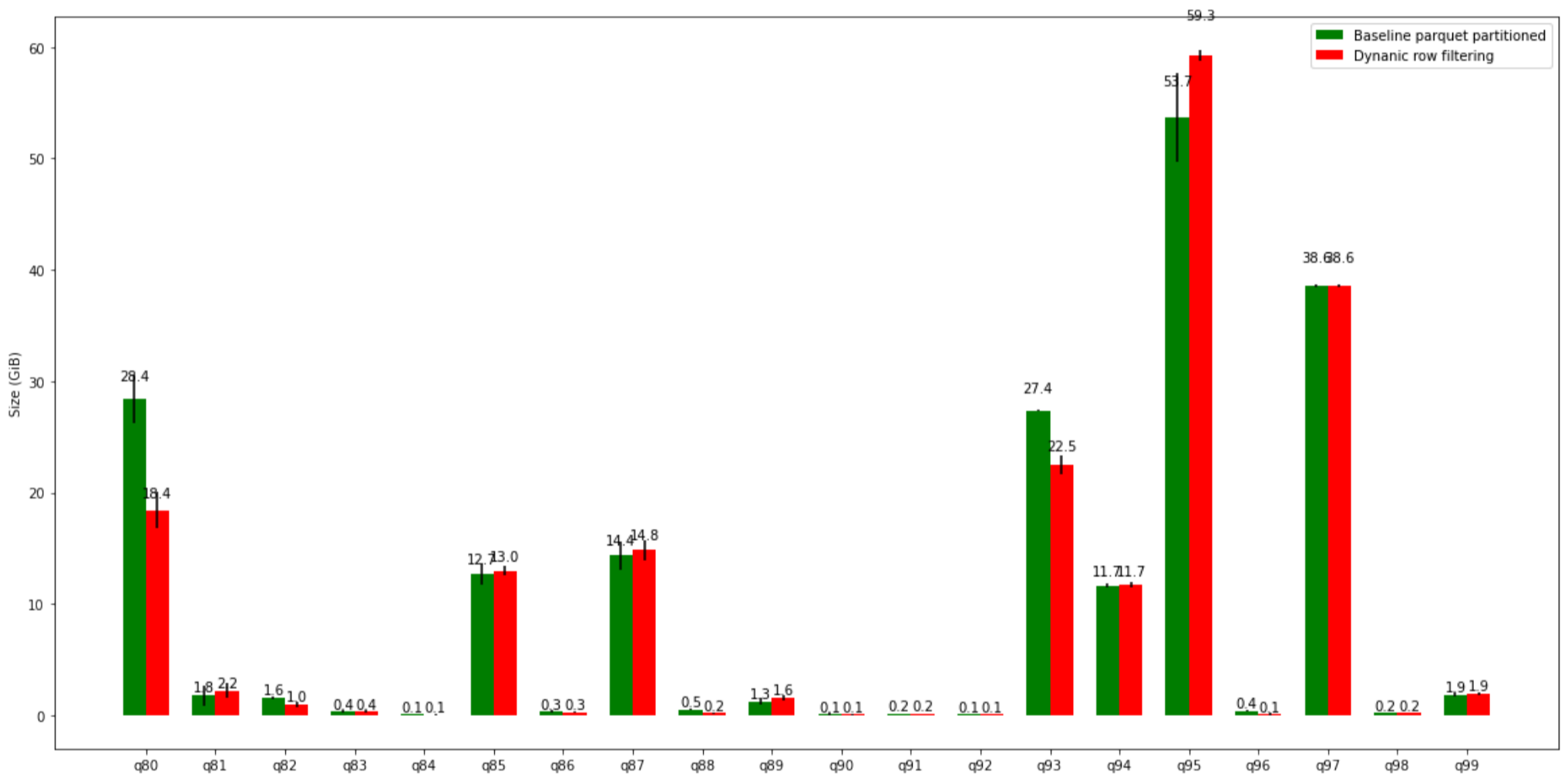
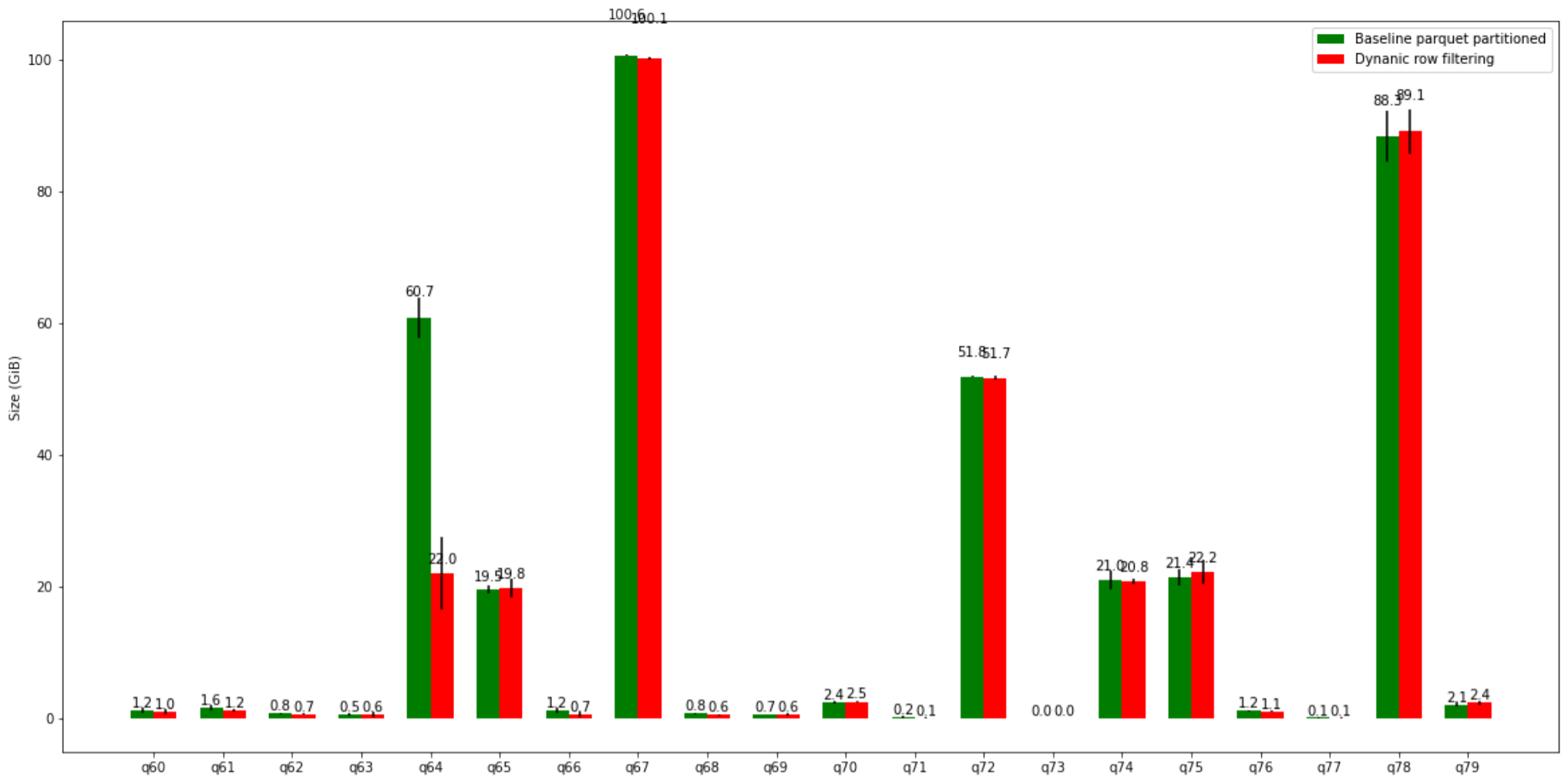




query	Baseline parquet partitioned mean	Baseline parquet partitioned std.dev	Dynamic row filtering mean	Dynamic row filtering std.dev
0 presto/tpch: q01	17.358 GiB	670.873 MiB	15.160 GiB	854.509 MiB
1 presto/tpch: q02	10.431 GiB	0.924 GiB	9.853 GiB	1.353 GiB
2 presto/tpch: q03	20.289 GiB	211.190 MiB	20.655 GiB	283.730 MiB
3 presto/tpch: q04	299.405 GiB	0	299.405 GiB	0
4 presto/tpch: q05	33.318 GiB	2.292 GiB	31.850 GiB	1.388 GiB
5 presto/tpch: q06	1.461 GiB	632.649 MiB	1.778 GiB	761.724 MiB
6 presto/tpch: q07	19.762 GiB	548.611 MiB	20.143 GiB	675.043 MiB
7 presto/tpch: q08	18.762 GiB	659.751 MiB	18.549 GiB	618.735 MiB
8 presto/tpch: q09	94.212 GiB	2.694 GiB	96.033 GiB	2.626 GiB
9 presto/tpch: q10	36.646 GiB	330.091 MiB	37.266 GiB	1.371 GiB
10 presto/tpch: q11	6.721 GiB	1.015 GiB	7.119 GiB	785.622 MiB
11 presto/tpch: q12	4.333 GiB	218.650 MiB	4.604 GiB	192.311 MiB
12 presto/tpch: q13	17.832 GiB	746.553 MiB	18.012 GiB	309.662 MiB
13 presto/tpch: q14	5.064 GiB	88.208 MiB	5.095 GiB	189.091 MiB
14 presto/tpch: q15	5.540 GiB	152.937 MiB	5.165 GiB	251.259 MiB
15 presto/tpch: q16	17.055 GiB	1.024 GiB	17.448 GiB	1.127 GiB
16 presto/tpch: q17	68.504 GiB	595.378 MiB	65.550 GiB	447.295 MiB
17 presto/tpch: q18	76.858 GiB	838.525 MiB	79.347 GiB	625.386 MiB
18 presto/tpch: q19	32.483 GiB	755.982 MiB	29.699 GiB	687.020 MiB
19 presto/tpch: q20	34.608 GiB	810.397 MiB	34.989 GiB	575.868 MiB
20 presto/tpch: q21	411.609 GiB	510.754 MiB	411.415 GiB	698.550 MiB
21 presto/tpch: q22	6.909 GiB	2.994 GiB	7.828 GiB	3.572 GiB

TPC-DS Comparison (Peak memory)





query	Baseline parquet partitioned mean	Baseline parquet partitioned std.dev	Dynamic row filtering mean	Dynamic row filtering std.dev
0 presto/tpcds: q01	1.435 GiB	0.980 GiB	1.218 GiB	1.012 GiB
1 presto/tpcds: q02	2.366 GiB	572.553 MiB	2.762 GiB	260.270 MiB
2 presto/tpcds: q03	78.020 MiB	33.402 MiB	72.852 MiB	62.982 MiB
3 presto/tpcds: q04	73.600 GiB	3.500 GiB	77.084 GiB	3.393 GiB
4 presto/tpcds: q05	7.810 GiB	1.017 GiB	7.684 GiB	1.122 GiB
5 presto/tpcds: q06	1.136 GiB	33.182 MiB	1.141 GiB	25.708 MiB
6 presto/tpcds: q07	3.161 GiB	292.574 MiB	2.063 GiB	458.763 MiB
7 presto/tpcds: q08	66.974 MiB	2.027 MiB	91.054 MiB	56.879 MiB
8 presto/tpcds: q09	503.923 MiB	38.984 MiB	473.819 MiB	25.137 MiB
9 presto/tpcds: q10	385.133 MiB	96.554 MiB	427.823 MiB	104.686 MiB
10 presto/tpcds: q11	59.935 GiB	739.467 MiB	59.736 GiB	0.926 GiB
11 presto/tpcds: q12	247.899 MiB	21.876 MiB	250.464 MiB	12.612 MiB
12 presto/tpcds: q13	14.130 GiB	372.969 MiB	14.310 GiB	212.216 MiB
13 presto/tpcds: q14	7.535 GiB	531.413 MiB	7.935 GiB	684.236 MiB
14 presto/tpcds: q15	1.581 GiB	72.709 MiB	1.565 GiB	78.204 MiB
15 presto/tpcds: q16	18.421 GiB	4.236 GiB	20.883 GiB	1.116 GiB
16 presto/tpcds: q17	2.374 GiB	490.437 MiB	2.464 GiB	282.105 MiB
17 presto/tpcds: q18	2.718 GiB	564.894 MiB	2.733 GiB	441.248 MiB

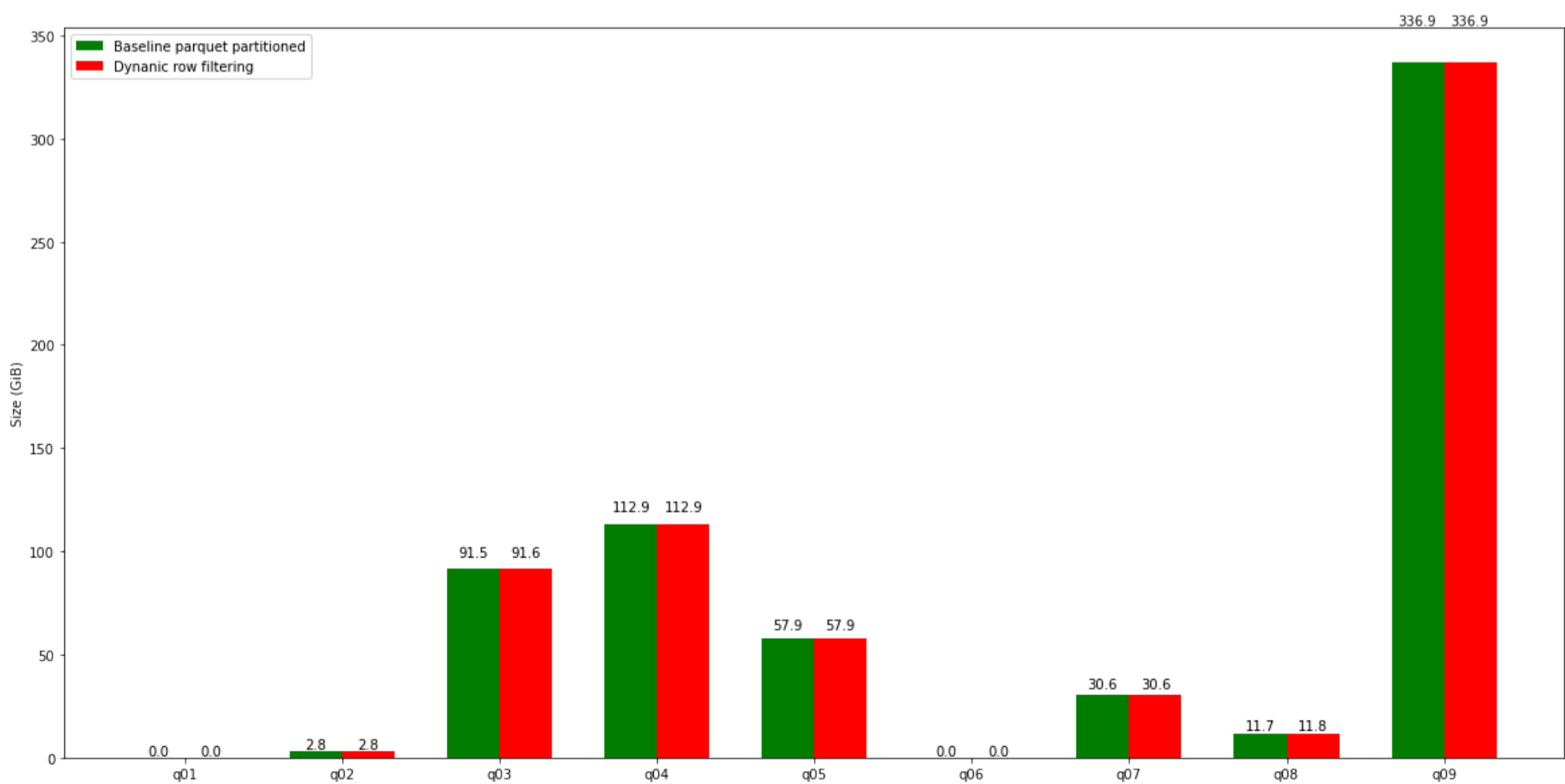
	query	Baseline parquet partitioned mean	Baseline parquet partitioned std.dev	Dynanic row filtering mean	Dynanic row filtering std.dev
18	presto/tpcds: q19	2.017 GiB	284.441 MiB	0.986 GiB	155.127 MiB
19	presto/tpcds: q20	201.135 MiB	6.900 MiB	202.550 MiB	23.770 MiB
20	presto/tpcds: q21	54.755 MiB	65.467 MiB	87.518 MiB	88.508 MiB
21	presto/tpcds: q22	2.324 GiB	53.972 MiB	2.273 GiB	68.649 MiB
22	presto/tpcds: q23	65.962 GiB	2.952 GiB	68.221 GiB	2.317 GiB
23	presto/tpcds: q24	26.126 GiB	0.972 GiB	25.461 GiB	1.871 GiB
24	presto/tpcds: q25	796.966 MiB	380.637 MiB	1.049 GiB	406.230 MiB
25	presto/tpcds: q26	1.170 GiB	281.664 MiB	624.677 MiB	131.731 MiB
26	presto/tpcds: q27	2.649 GiB	587.505 MiB	771.674 MiB	53.980 MiB
27	presto/tpcds: q28	2.344 GiB	218.787 MiB	2.275 GiB	123.887 MiB
28	presto/tpcds: q29	8.395 GiB	131.267 MiB	8.038 GiB	474.516 MiB
29	presto/tpcds: q30	1.169 GiB	381.426 MiB	1.007 GiB	678.640 MiB
30	presto/tpcds: q31	3.864 GiB	287.810 MiB	4.278 GiB	730.727 MiB
31	presto/tpcds: q32	123.529 MiB	21.499 MiB	216.556 MiB	114.348 MiB
32	presto/tpcds: q33	1.367 GiB	546.764 MiB	1.248 GiB	552.930 MiB
33	presto/tpcds: q34	27.107 MiB	17.734 MiB	30.921 MiB	9.392 MiB
34	presto/tpcds: q35	2.057 GiB	762.901 MiB	1.327 GiB	921.178 MiB
35	presto/tpcds: q36	1.696 GiB	438.043 MiB	1.575 GiB	187.582 MiB
36	presto/tpcds: q37	693.526 MiB	143.757 MiB	347.167 MiB	109.972 MiB
37	presto/tpcds: q38	14.804 GiB	1.108 GiB	14.645 GiB	1.060 GiB
38	presto/tpcds: q39	1.128 GiB	22.465 MiB	1.115 GiB	10.041 MiB
39	presto/tpcds: q40	13.446 GiB	283.252 MiB	13.228 GiB	595.672 MiB
40	presto/tpcds: q41	270.028 KiB	18.364 KiB	272.286 KiB	22.302 KiB
41	presto/tpcds: q42	7.412 MiB	191.745 KiB	7.557 MiB	342.543 KiB
42	presto/tpcds: q43	0.960 GiB	487.762 MiB	351.556 MiB	94.367 MiB
43	presto/tpcds: q44	677.038 MiB	41.434 MiB	722.186 MiB	56.054 MiB
44	presto/tpcds: q45	1.212 GiB	66.776 MiB	1.211 GiB	32.556 MiB
45	presto/tpcds: q46	0.946 GiB	201.343 MiB	609.745 MiB	119.814 MiB
46	presto/tpcds: q47	12.739 GiB	344.446 MiB	12.608 GiB	558.624 MiB
47	presto/tpcds: q48	9.096 GiB	419.536 MiB	8.846 GiB	533.842 MiB
48	presto/tpcds: q49	16.546 GiB	1.103 GiB	16.698 GiB	2.556 GiB
49	presto/tpcds: q50	4.704 GiB	185.270 MiB	4.908 GiB	89.333 MiB
50	presto/tpcds: q51	6.711 GiB	753.494 MiB	7.112 GiB	388.384 MiB
51	presto/tpcds: q52	8.010 MiB	351.154 KiB	47.013 MiB	47.510 MiB
52	presto/tpcds: q53	587.133 MiB	335.338 MiB	670.931 MiB	359.661 MiB
53	presto/tpcds: q54	1.918 GiB	300.584 MiB	1.151 GiB	377.368 MiB
54	presto/tpcds: q55	38.617 MiB	28.229 MiB	16.397 MiB	11.296 MiB
55	presto/tpcds: q56	467.413 MiB	102.275 MiB	435.148 MiB	138.618 MiB
56	presto/tpcds: q57	9.290 GiB	739.396 MiB	9.093 GiB	590.509 MiB
57	presto/tpcds: q58	810.904 MiB	136.136 MiB	917.225 MiB	163.040 MiB
58	presto/tpcds: q59	2.284 GiB	206.172 MiB	2.329 GiB	201.796 MiB
59	presto/tpcds: q60	1.219 GiB	474.166 MiB	1.039 GiB	353.330 MiB
60	presto/tpcds: q61	1.623 GiB	343.086 MiB	1.213 GiB	231.419 MiB
61	presto/tpcds: q62	769.921 MiB	112.047 MiB	730.457 MiB	192.294 MiB
62	presto/tpcds: q63	560.487 MiB	241.929 MiB	650.390 MiB	493.529 MiB
63	presto/tpcds: q64	60.715 GiB	3.035 GiB	22.011 GiB	5.536 GiB
64	presto/tpcds: q65	19.534 GiB	590.384 MiB	19.773 GiB	1.430 GiB
65	presto/tpcds: q66	1.228 GiB	453.836 MiB	727.193 MiB	412.368 MiB
66	presto/tpcds: q67	100.586 GiB	157.208 MiB	100.136 GiB	190.874 MiB
67	presto/tpcds: q68	793.747 MiB	141.540 MiB	582.738 MiB	90.099 MiB
68	presto/tpcds: q69	667.696 MiB	37.753 MiB	599.232 MiB	174.664 MiB
69	presto/tpcds: q70	2.421 GiB	143.927 MiB	2.505 GiB	88.755 MiB
70	presto/tpcds: q71	247.519 MiB	262.179 MiB	91.209 MiB	31.303 MiB
71	presto/tpcds: q72	51.830 GiB	129.739 MiB	51.670 GiB	233.247 MiB
72	presto/tpcds: q73	11.616 MiB	6.091 MiB	17.267 MiB	17.290 MiB
73	presto/tpcds: q74	21.029 GiB	1.461 GiB	20.764 GiB	399.794 MiB
74	presto/tpcds: q75	21.433 GiB	1.155 GiB	22.249 GiB	1.884 GiB

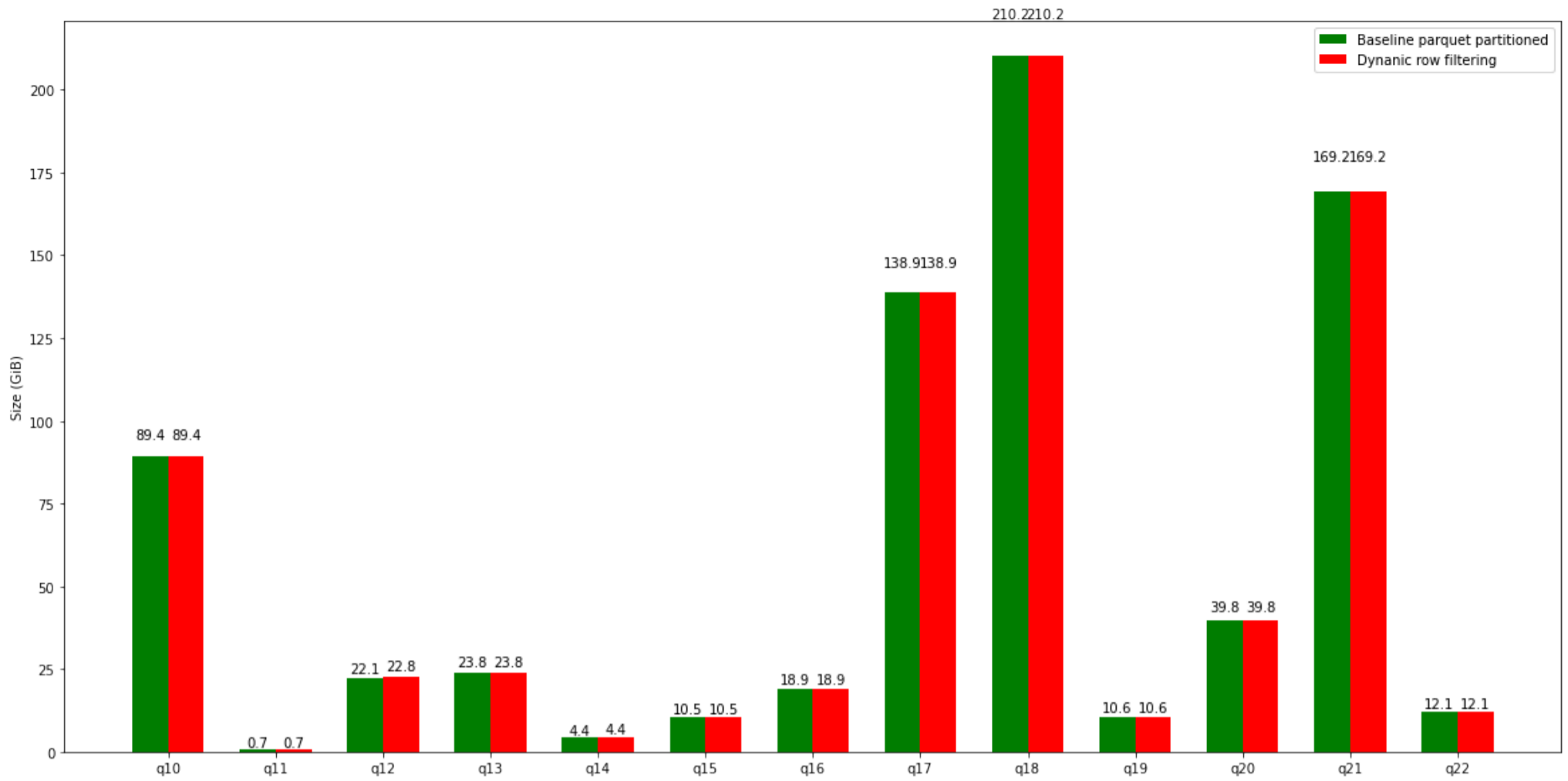
query	Baseline parquet partitioned mean	Baseline parquet partitioned std.dev	Dynanic row filtering mean	Dynanic row filtering std.dev	
75	presto/tpcds: q76	1.164 GiB	68.972 MiB	1.108 GiB	96.280 MiB
76	presto/tpcds: q77	111.334 MiB	104.811 MiB	72.519 MiB	43.440 MiB
77	presto/tpcds: q78	88.287 GiB	3.856 GiB	89.060 GiB	3.331 GiB
78	presto/tpcds: q79	2.073 GiB	318.628 MiB	2.370 GiB	322.363 MiB
79	presto/tpcds: q80	28.435 GiB	2.178 GiB	18.388 GiB	1.632 GiB
80	presto/tpcds: q81	1.816 GiB	928.375 MiB	2.217 GiB	663.495 MiB
81	presto/tpcds: q82	1.588 GiB	166.467 MiB	0.994 GiB	209.973 MiB
82	presto/tpcds: q83	368.066 MiB	87.986 MiB	377.574 MiB	107.340 MiB
83	presto/tpcds: q84	112.365 MiB	23.387 MiB	54.701 MiB	16.054 MiB
84	presto/tpcds: q85	12.714 GiB	0.921 GiB	12.975 GiB	427.646 MiB
85	presto/tpcds: q86	334.744 MiB	115.601 MiB	300.888 MiB	86.124 MiB
86	presto/tpcds: q87	14.357 GiB	1.278 GiB	14.822 GiB	0.949 GiB
87	presto/tpcds: q88	538.774 MiB	53.768 MiB	227.330 MiB	73.043 MiB
88	presto/tpcds: q89	1.265 GiB	306.478 MiB	1.605 GiB	250.834 MiB
89	presto/tpcds: q90	135.331 MiB	114.781 MiB	82.384 MiB	77.188 MiB
90	presto/tpcds: q91	161.985 MiB	14.145 MiB	171.047 MiB	12.863 MiB
91	presto/tpcds: q92	111.179 MiB	9.905 MiB	110.510 MiB	192.721 KiB
92	presto/tpcds: q93	27.369 GiB	100.365 MiB	22.469 GiB	855.339 MiB
93	presto/tpcds: q94	11.669 GiB	166.911 MiB	11.732 GiB	280.418 MiB
94	presto/tpcds: q95	53.669 GiB	3.972 GiB	59.253 GiB	496.327 MiB
95	presto/tpcds: q96	422.194 MiB	71.536 MiB	98.598 MiB	104.366 MiB
96	presto/tpcds: q97	38.552 GiB	114.233 MiB	38.581 GiB	106.108 MiB
97	presto/tpcds: q98	242.899 MiB	15.637 MiB	236.433 MiB	13.610 MiB
98	presto/tpcds: q99	1.871 GiB	153.124 MiB	1.913 GiB	124.447 MiB

TPC-H Comparison (physicalInputDataSize)

TPC-DS Comparison (physicalInputDataSize)

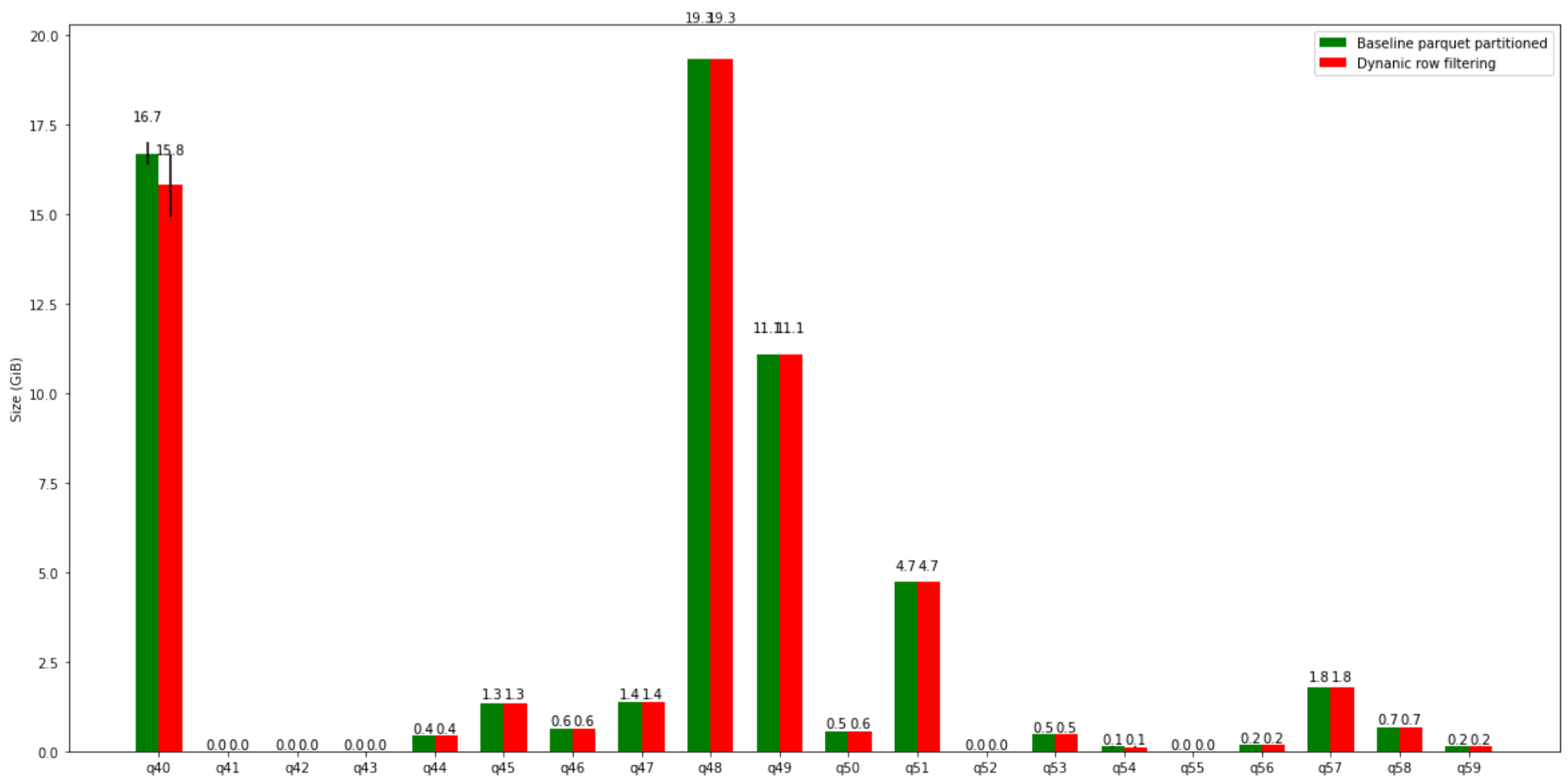
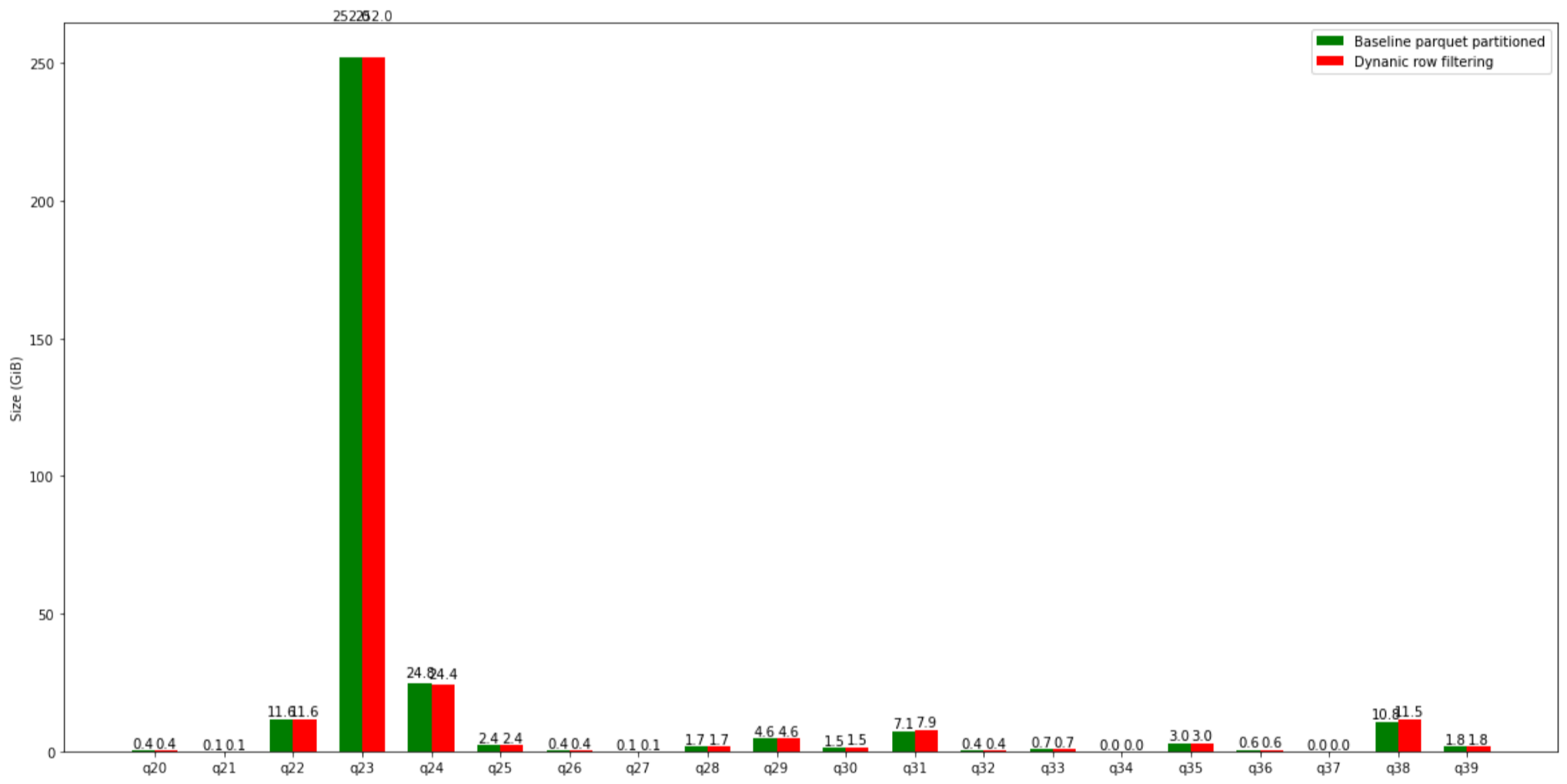
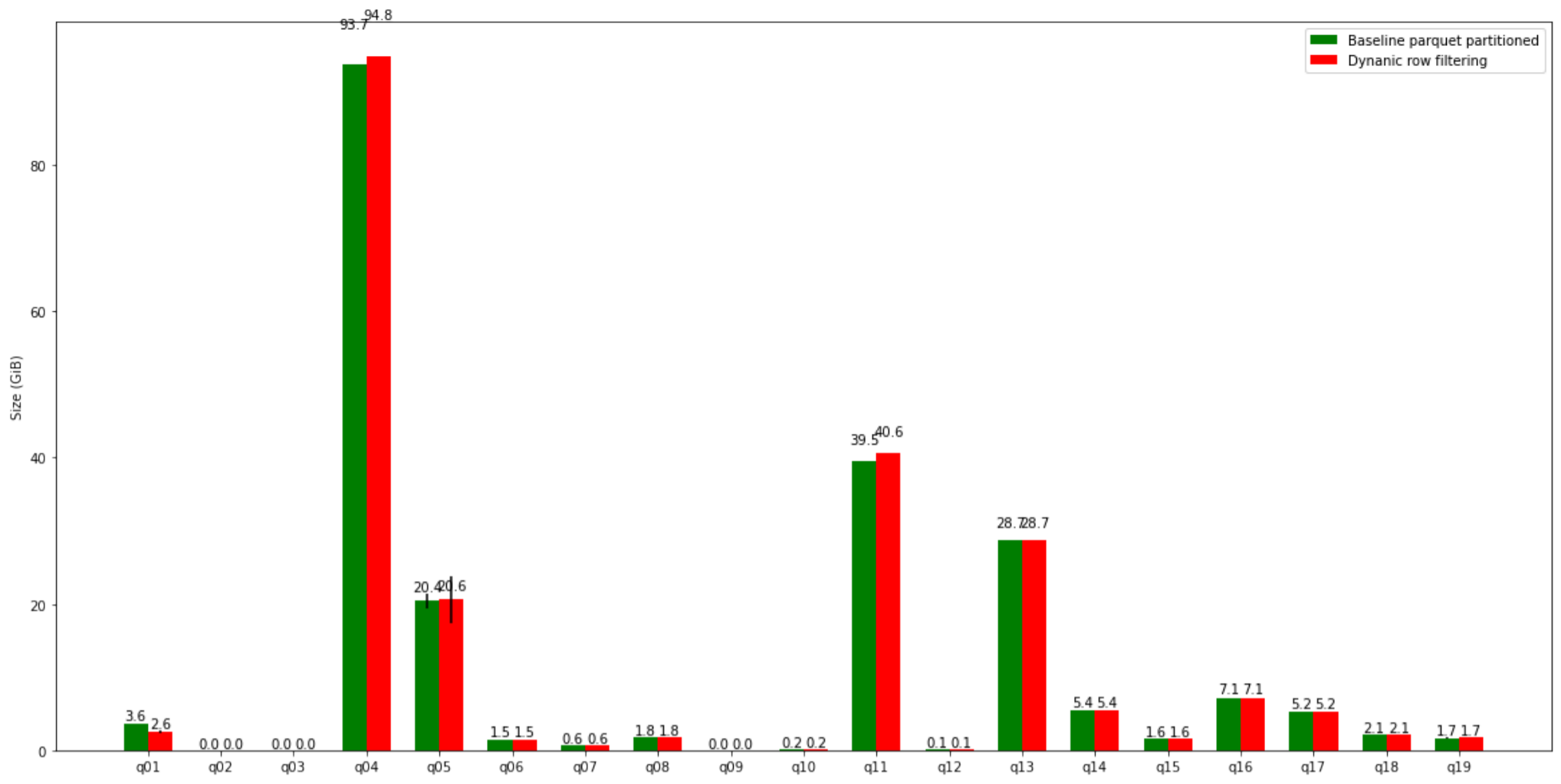
TPC-H Comparison (internalNetworkInputDataSize GB)

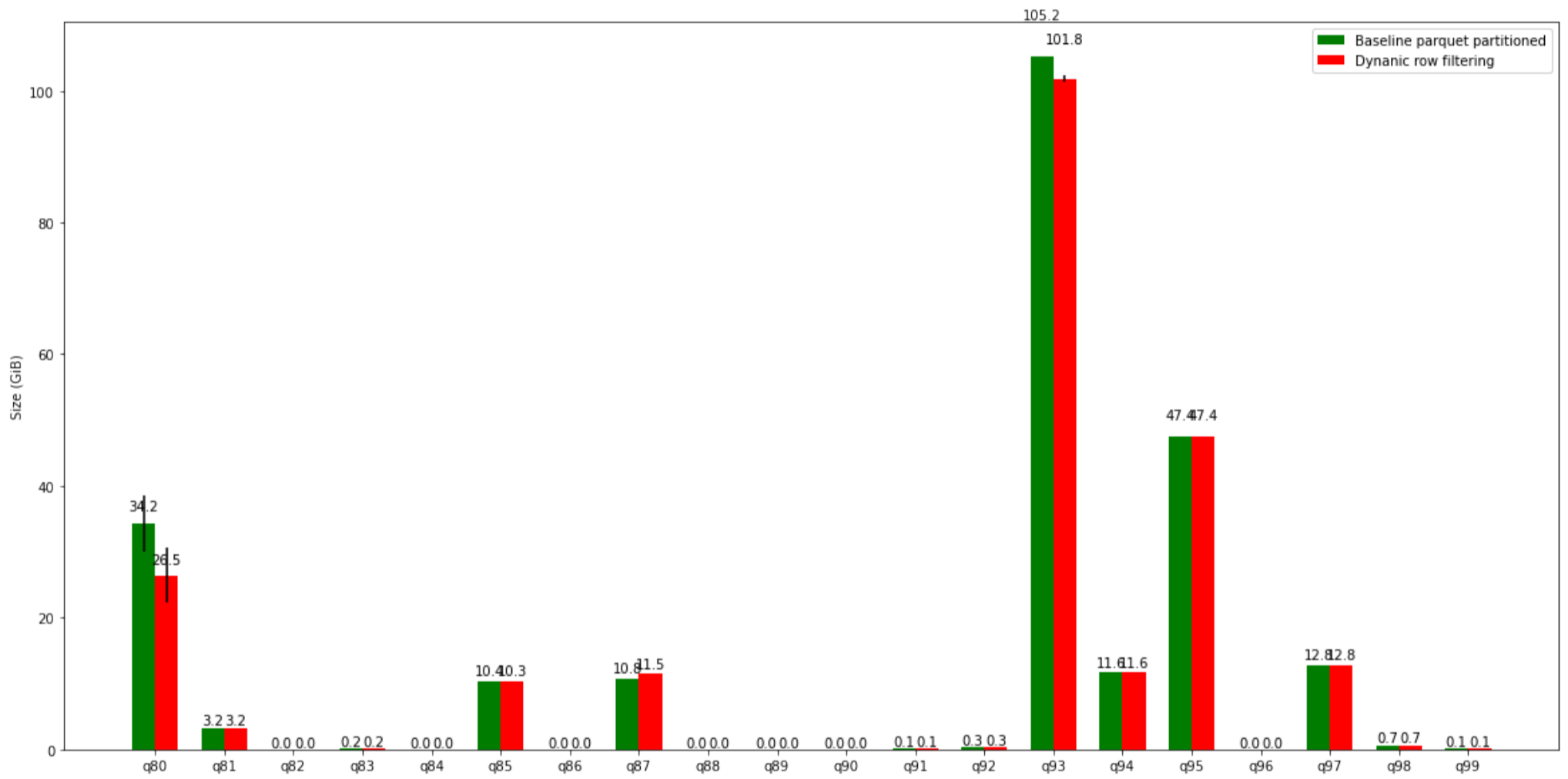
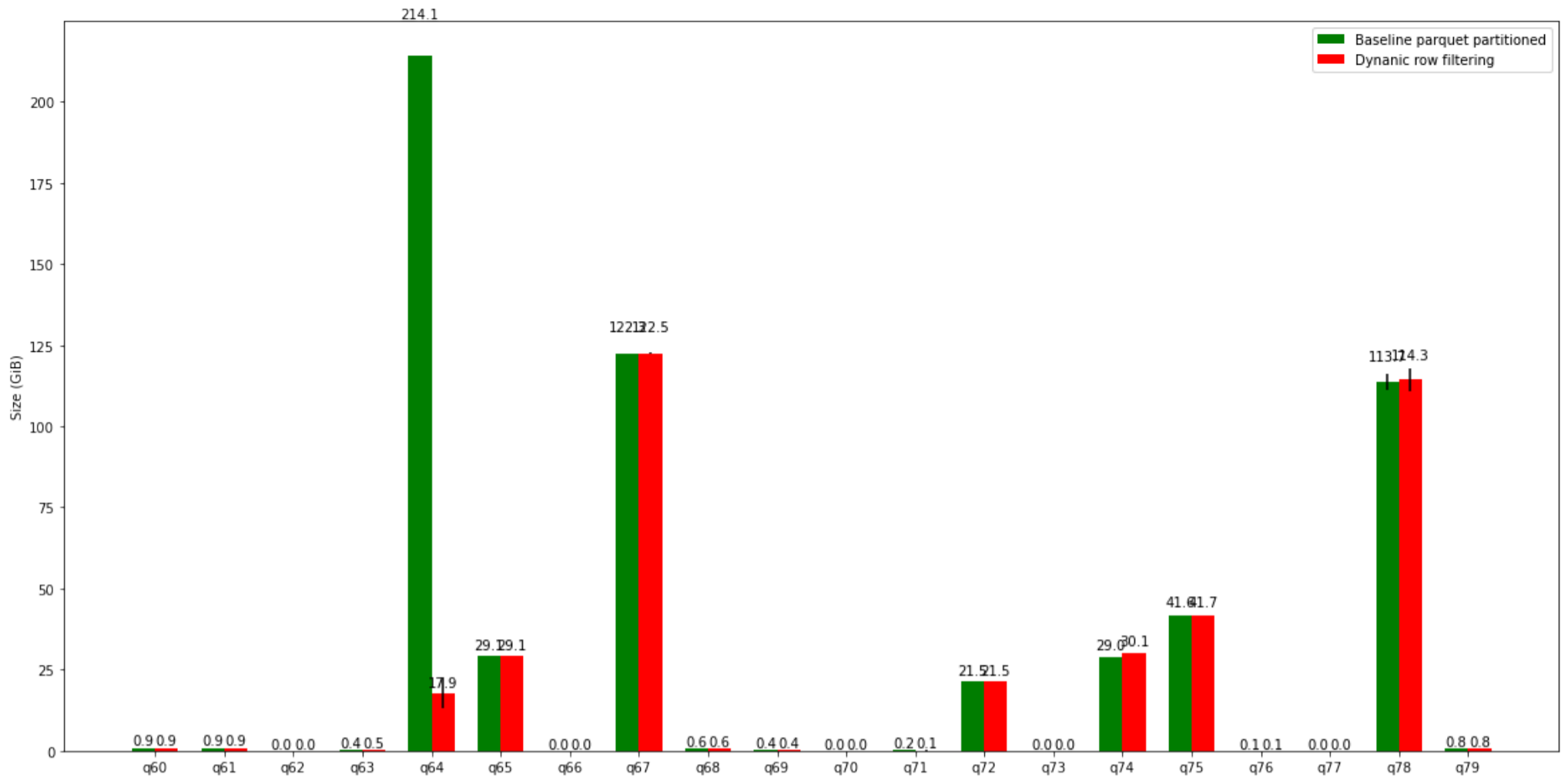




query	Baseline parquet partitioned mean	Baseline parquet partitioned std.dev	Dynamic row filtering mean	Dynamic row filtering std.dev
0 presto/tpch: q01	1.281 MiB	7.971 KiB	1.230 MiB	15.036 KiB
1 presto/tpch: q02	2.806 GiB	4.703 KiB	2.806 GiB	4.421 KiB
2 presto/tpch: q03	91.492 GiB	1.612 MiB	91.594 GiB	1.627 MiB
3 presto/tpch: q04	112.894 GiB	1.811 MiB	112.893 GiB	2.252 MiB
4 presto/tpch: q05	57.937 GiB	58.622 KiB	57.937 GiB	60.059 KiB
5 presto/tpch: q06	46.514 KiB	605.171 YiB	46.964 KiB	157.875 YiB
6 presto/tpch: q07	30.634 GiB	2.306 MiB	30.636 GiB	1.765 MiB
7 presto/tpch: q08	11.716 GiB	1.912 MiB	11.799 GiB	1.145 MiB
8 presto/tpch: q09	336.937 GiB	6.665 MiB	336.937 GiB	2.878 MiB
9 presto/tpch: q10	89.396 GiB	293.986 KiB	89.395 GiB	770.274 KiB
10 presto/tpch: q11	691.169 MiB	4.419 MiB	690.846 MiB	2.275 MiB
11 presto/tpch: q12	22.079 GiB	565.351 KiB	22.806 GiB	3.966 MiB
12 presto/tpch: q13	23.789 GiB	6.695 KiB	23.789 GiB	8.108 KiB
13 presto/tpch: q14	4.363 GiB	0	4.411 GiB	0
14 presto/tpch: q15	10.455 GiB	558.228 KiB	10.455 GiB	1.372 MiB
15 presto/tpch: q16	18.864 GiB	4.202 KiB	18.864 GiB	5.810 KiB
16 presto/tpch: q17	138.881 GiB	38.940 KiB	138.881 GiB	11.981 KiB
17 presto/tpch: q18	210.229 GiB	2.876 MiB	210.213 GiB	2.122 MiB
18 presto/tpch: q19	10.589 GiB	30.884 KiB	10.589 GiB	23.899 KiB
19 presto/tpch: q20	39.810 GiB	32.701 KiB	39.810 GiB	28.210 KiB
20 presto/tpch: q21	169.181 GiB	1.648 MiB	169.180 GiB	846.034 KiB
21 presto/tpch: q22	12.083 GiB	3.625 KiB	12.083 GiB	3.073 KiB

TPC-DS Comparison (internalNetworkInputDataSize GB)





query	Baseline parquet partitioned mean	Baseline parquet partitioned std.dev	Dynamic row filtering mean	Dynamic row filtering std.dev
0 presto/tpcds: q01	3.625 GiB	440.990 KiB	2.577 GiB	226.250 MiB
1 presto/tpcds: q02	24.954 MiB	21.521 KiB	24.999 MiB	11.012 KiB
2 presto/tpcds: q03	2.392 MiB	0	2.392 MiB	0
3 presto/tpcds: q04	93.655 GiB	1.657 MiB	94.803 GiB	2.096 MiB
4 presto/tpcds: q05	20.392 GiB	0.938 GiB	20.619 GiB	3.191 GiB
5 presto/tpcds: q06	1.511 GiB	649.330 KiB	1.512 GiB	875.047 KiB
6 presto/tpcds: q07	651.872 MiB	1.899 MiB	652.307 MiB	463.945 KiB
7 presto/tpcds: q08	1.768 GiB	4.198 KiB	1.770 GiB	17.333 KiB
8 presto/tpcds: q09	2.747 MiB	5.915 KiB	2.747 MiB	7.841 KiB
9 presto/tpcds: q10	158.391 MiB	4.130 KiB	157.911 MiB	1.176 MiB
10 presto/tpcds: q11	39.531 GiB	1.201 MiB	40.615 GiB	19.012 MiB
11 presto/tpcds: q12	137.397 MiB	6.367 YiB	137.397 MiB	19.418 YiB
12 presto/tpcds: q13	28.740 GiB	11.844 KiB	28.740 GiB	0.950 KiB
13 presto/tpcds: q14	5.386 GiB	8.367 MiB	5.390 GiB	6.340 MiB
14 presto/tpcds: q15	1.556 GiB	1.161 MiB	1.560 GiB	613.639 KiB
15 presto/tpcds: q16	7.128 GiB	26.041 KiB	7.119 GiB	414.933 KiB
16 presto/tpcds: q17	5.199 GiB	0	5.198 GiB	40.217 KiB
17 presto/tpcds: q18	2.114 GiB	17.453 KiB	2.114 GiB	21.301 KiB

	query	Baseline parquet partitioned mean	Baseline parquet partitioned std.dev	Dynanic row filtering mean	Dynanic row filtering std.dev
18	presto/tpcds: q19	1.662 GiB	91.955 MiB	1.707 GiB	294.401 KiB
19	presto/tpcds: q20	445.962 MiB	2.019 MiB	448.778 MiB	2.678 MiB
20	presto/tpcds: q21	94.860 MiB	6.682 KiB	94.862 MiB	768.369 YiB
21	presto/tpcds: q22	11.591 GiB	0	11.591 GiB	0
22	presto/tpcds: q23	252.010 GiB	38.199 KiB	252.013 GiB	55.072 KiB
23	presto/tpcds: q24	24.793 GiB	268.797 KiB	24.366 GiB	172.173 KiB
24	presto/tpcds: q25	2.369 GiB	0	2.369 GiB	0
25	presto/tpcds: q26	393.820 MiB	148.664 KiB	393.823 MiB	222.924 KiB
26	presto/tpcds: q27	58.725 MiB	9.008 KiB	58.633 MiB	1.286 KiB
27	presto/tpcds: q28	1.740 GiB	260.933 KiB	1.740 GiB	194.051 KiB
28	presto/tpcds: q29	4.557 GiB	596.990 YiB	4.556 GiB	365.105 YiB
29	presto/tpcds: q30	1.528 GiB	1.364 MiB	1.530 GiB	1.190 MiB
30	presto/tpcds: q31	7.097 GiB	1.059 MiB	7.875 GiB	9.745 MiB
31	presto/tpcds: q32	426.682 MiB	0	374.376 MiB	128.123 MiB
32	presto/tpcds: q33	751.964 MiB	392.220 KiB	751.698 MiB	514.584 KiB
33	presto/tpcds: q34	13.847 MiB	2.115 YiB	13.846 MiB	4.296 YiB
34	presto/tpcds: q35	2.960 GiB	889.006 KiB	2.959 GiB	1.910 MiB
35	presto/tpcds: q36	637.931 MiB	16.546 KiB	637.933 MiB	5.955 KiB
36	presto/tpcds: q37	1.896 MiB	1.094 KiB	1.896 MiB	1.483 KiB
37	presto/tpcds: q38	10.767 GiB	23.547 MiB	11.461 GiB	19.910 MiB
38	presto/tpcds: q39	1.783 GiB	1.756 MiB	1.782 GiB	2.269 MiB
39	presto/tpcds: q40	16.694 GiB	338.996 MiB	15.806 GiB	885.740 MiB
40	presto/tpcds: q41	57.044 KiB	0	57.044 KiB	0
41	presto/tpcds: q42	1.017 MiB	0	1.017 MiB	0
42	presto/tpcds: q43	6.440 MiB	0	6.435 MiB	6.731 KiB
43	presto/tpcds: q44	439.296 MiB	47.047 KiB	439.217 MiB	89.234 KiB
44	presto/tpcds: q45	1.339 GiB	694.100 KiB	1.346 GiB	679.968 KiB
45	presto/tpcds: q46	651.653 MiB	220.200 KiB	660.934 MiB	1.891 KiB
46	presto/tpcds: q47	1.357 GiB	85.490 KiB	1.358 GiB	49.404 KiB
47	presto/tpcds: q48	19.324 GiB	3.221 KiB	19.324 GiB	483.837 YiB
48	presto/tpcds: q49	11.086 GiB	17.188 KiB	11.086 GiB	20.642 KiB
49	presto/tpcds: q50	563.184 MiB	12.207 KiB	563.525 MiB	10.908 KiB
50	presto/tpcds: q51	4.742 GiB	200.547 KiB	4.742 GiB	260.262 KiB
51	presto/tpcds: q52	3.862 MiB	0	3.862 MiB	0
52	presto/tpcds: q53	472.717 MiB	134.188 KiB	479.081 MiB	98.072 KiB
53	presto/tpcds: q54	129.018 MiB	34.315 MiB	122.338 MiB	32.494 MiB
54	presto/tpcds: q55	2.846 MiB	0	2.846 MiB	0
55	presto/tpcds: q56	169.538 MiB	159.673 KiB	169.482 MiB	104.161 KiB
56	presto/tpcds: q57	1.798 GiB	57.491 KiB	1.798 GiB	54.882 KiB
57	presto/tpcds: q58	684.015 MiB	1.794 MiB	685.215 MiB	553.396 KiB
58	presto/tpcds: q59	155.222 MiB	139.024 KiB	155.280 MiB	59.589 KiB
59	presto/tpcds: q60	0.940 GiB	435.569 KiB	0.939 GiB	1.873 MiB
60	presto/tpcds: q61	936.653 MiB	27.313 MiB	931.882 MiB	27.647 MiB
61	presto/tpcds: q62	46.376 MiB	11.903 KiB	46.369 MiB	5.702 KiB
62	presto/tpcds: q63	458.850 MiB	64.573 KiB	465.231 MiB	216.738 KiB
63	presto/tpcds: q64	214.126 GiB	33.533 MiB	17.902 GiB	4.942 GiB
64	presto/tpcds: q65	29.100 GiB	198.902 KiB	29.100 GiB	193.660 KiB
65	presto/tpcds: q66	7.489 MiB	58.393 KiB	7.430 MiB	55.997 KiB
66	presto/tpcds: q67	122.278 GiB	99.196 MiB	122.484 GiB	94.200 MiB
67	presto/tpcds: q68	603.047 MiB	0	594.972 MiB	365.077 KiB
68	presto/tpcds: q69	383.599 MiB	435.635 KiB	387.036 MiB	342.800 KiB
69	presto/tpcds: q70	2.239 MiB	38.751 KiB	2.278 MiB	8.502 KiB
70	presto/tpcds: q71	180.093 MiB	32.697 KiB	125.296 MiB	11.143 MiB
71	presto/tpcds: q72	21.489 GiB	33.114 KiB	21.498 GiB	272.557 KiB
72	presto/tpcds: q73	6.222 MiB	15.843 YiB	6.222 MiB	12.469 YiB
73	presto/tpcds: q74	29.030 GiB	1.787 MiB	30.110 GiB	19.278 MiB
74	presto/tpcds: q75	41.649 GiB	5.247 MiB	41.687 GiB	2.674 MiB

	query	Baseline parquet partitioned mean	Baseline parquet partitioned std.dev	Dynanic row filtering mean	Dynanic row filtering std.dev
75	presto/tpcds: q76	72.569 MiB	410.506 KiB	72.511 MiB	280.106 KiB
76	presto/tpcds: q77	6.110 MiB	2.854 KiB	6.109 MiB	1.575 KiB
77	presto/tpcds: q78	113.693 GiB	2.329 GiB	114.329 GiB	3.500 GiB
78	presto/tpcds: q79	863.332 MiB	0	863.332 MiB	0
79	presto/tpcds: q80	34.218 GiB	4.269 GiB	26.453 GiB	4.137 GiB
80	presto/tpcds: q81	3.159 GiB	564.701 KiB	3.162 GiB	465.728 KiB
81	presto/tpcds: q82	7.991 MiB	3.667 KiB	7.989 MiB	4.017 KiB
82	presto/tpcds: q83	159.181 MiB	1.665 MiB	159.970 MiB	1.359 MiB
83	presto/tpcds: q84	21.132 MiB	15.111 YiB	21.076 MiB	18.425 YiB
84	presto/tpcds: q85	10.404 GiB	41.511 KiB	10.331 GiB	474.050 KiB
85	presto/tpcds: q86	44.360 MiB	3.316 KiB	44.359 MiB	10.845 KiB
86	presto/tpcds: q87	10.757 GiB	30.462 MiB	11.471 GiB	10.293 MiB
87	presto/tpcds: q88	3.068 MiB	62.105 YiB	3.068 MiB	37.697 YiB
88	presto/tpcds: q89	28.669 MiB	1.711 KiB	28.667 MiB	3.586 KiB
89	presto/tpcds: q90	1.189 MiB	111.887 YiB	1.189 MiB	88.597 YiB
90	presto/tpcds: q91	98.195 MiB	25.212 KiB	76.580 MiB	10.596 MiB
91	presto/tpcds: q92	304.667 MiB	0	304.667 MiB	0
92	presto/tpcds: q93	105.183 GiB	7.742 KiB	101.797 GiB	542.422 MiB
93	presto/tpcds: q94	11.647 GiB	38.583 KiB	11.647 GiB	37.170 KiB
94	presto/tpcds: q95	47.434 GiB	169.472 KiB	47.434 GiB	103.337 KiB
95	presto/tpcds: q96	313.919 KiB	36.788 YiB	313.911 KiB	18.394 YiB
96	presto/tpcds: q97	12.807 GiB	218.889 KiB	12.807 GiB	216.910 KiB
97	presto/tpcds: q98	675.504 MiB	342.328 KiB	675.090 MiB	423.142 KiB
98	presto/tpcds: q99	100.275 MiB	8.094 KiB	100.271 MiB	7.845 KiB

TPC-H Comparison (planning time seconds)

TPC-DS Comparison (planning time seconds)