

# FAILED QUERIES

## Baseline parquet unpartitioned

benchmark query mean\_duration std\_dev

## Dynamic row filtering

benchmark query mean\_duration std\_dev

# SUMMARY

	label	TPCH wall time	TPC-DS wall time	TPCH CPU time	TPC-DS CPU time	TPCH internalNetworkInputDataSize	TPC-DS internalNetworkInputDataSize	TPCH peak memory	TPC-DS peak memory
0	Baseline parquet unpartitioned	318.323333	695.103500	27226.800000	82526.330833	1.169 TiB	2.594 TiB	631.252 GiB	1.312 TiB
1	Dynamic row filtering	311.642167	591.373833	27394.300000	70049.067167	1.169 TiB	1.676 TiB	629.028 GiB	1.165 TiB

## Store sales flat Comparison (DURATION)

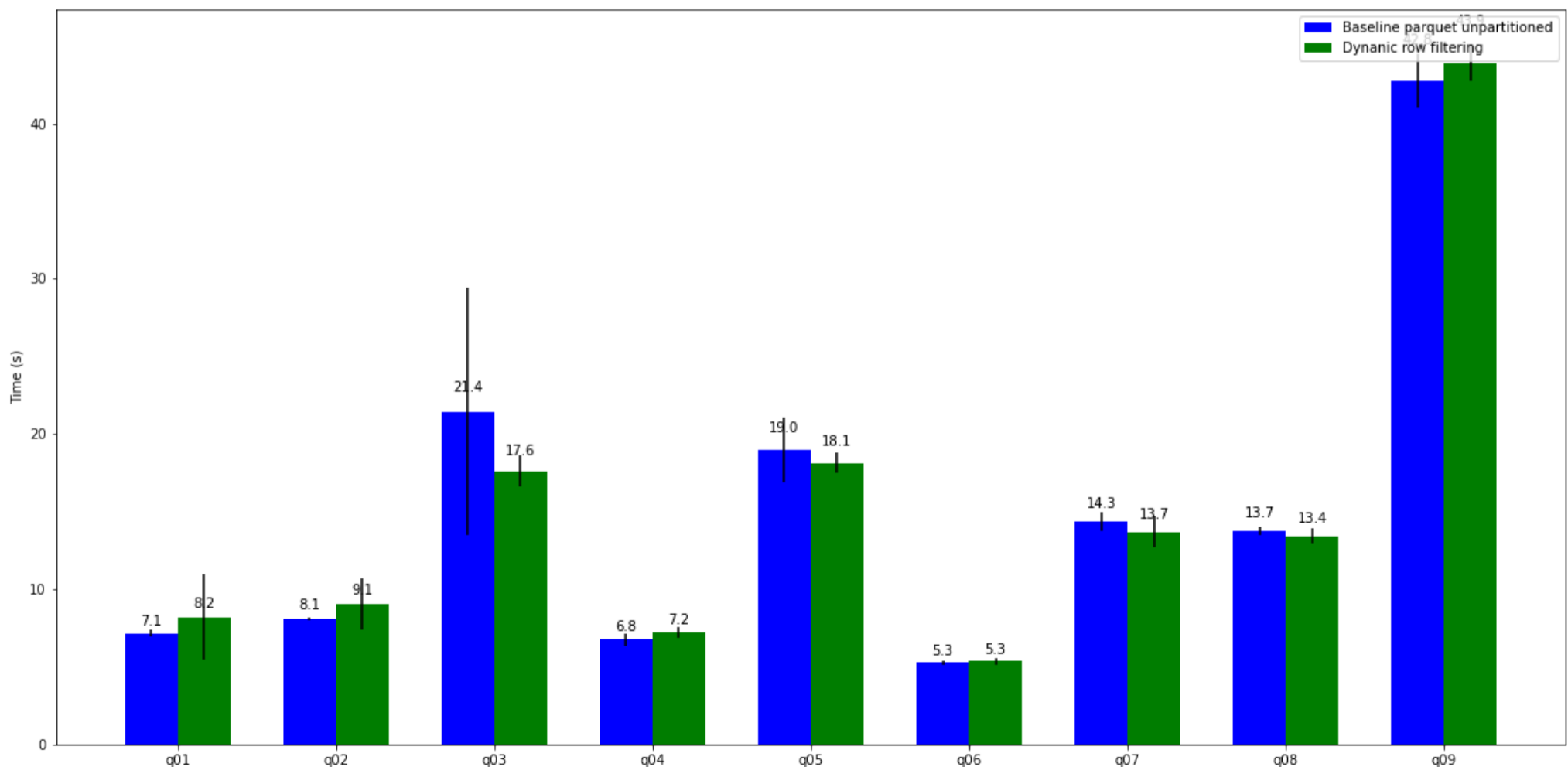
## Store sales flat Comparison (CPU)

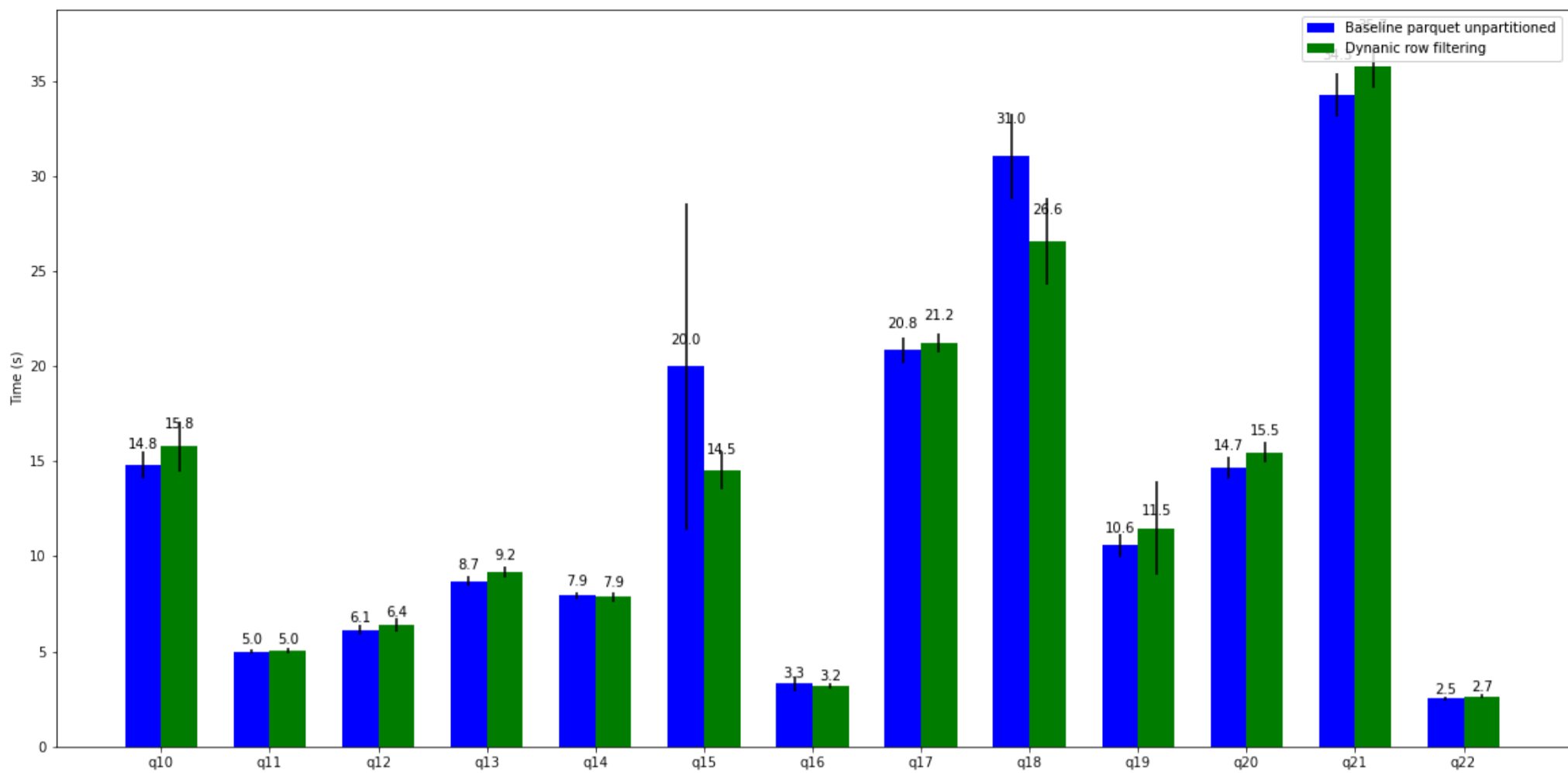
## Insert Comparison (DURATION)

## Insert Comparison (CPU)

## Insert Comparison (PEAK MEMORY)

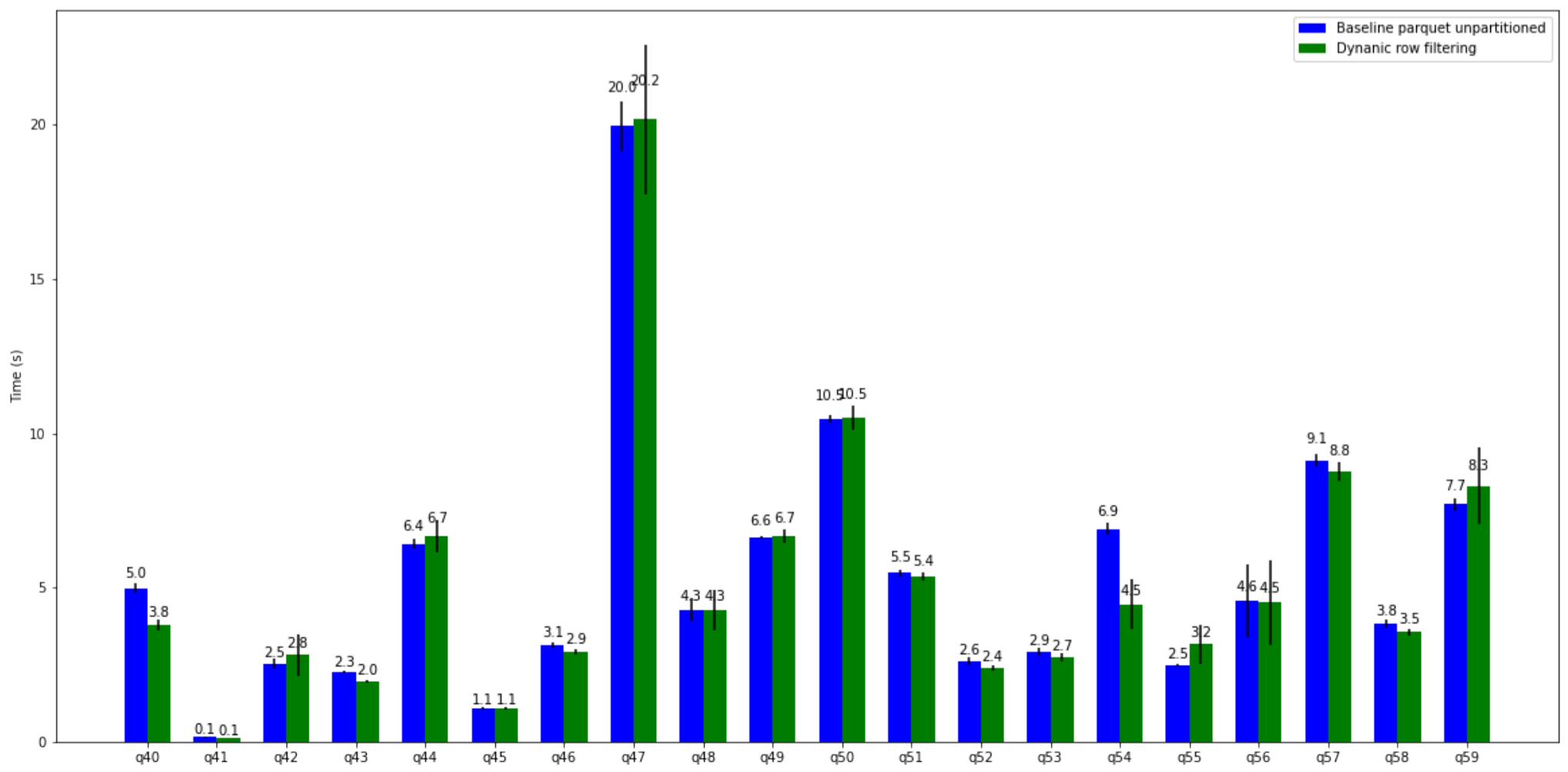
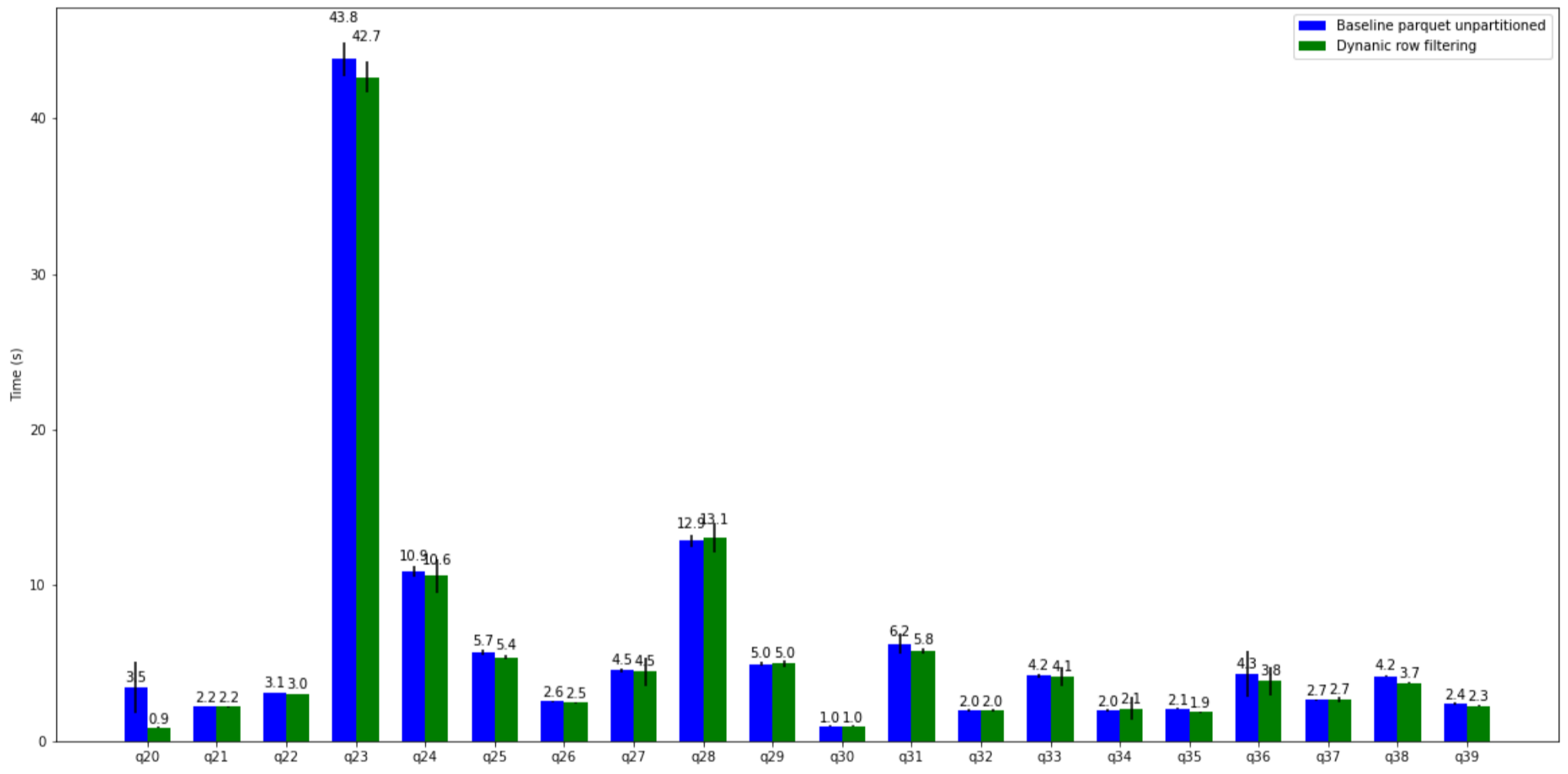
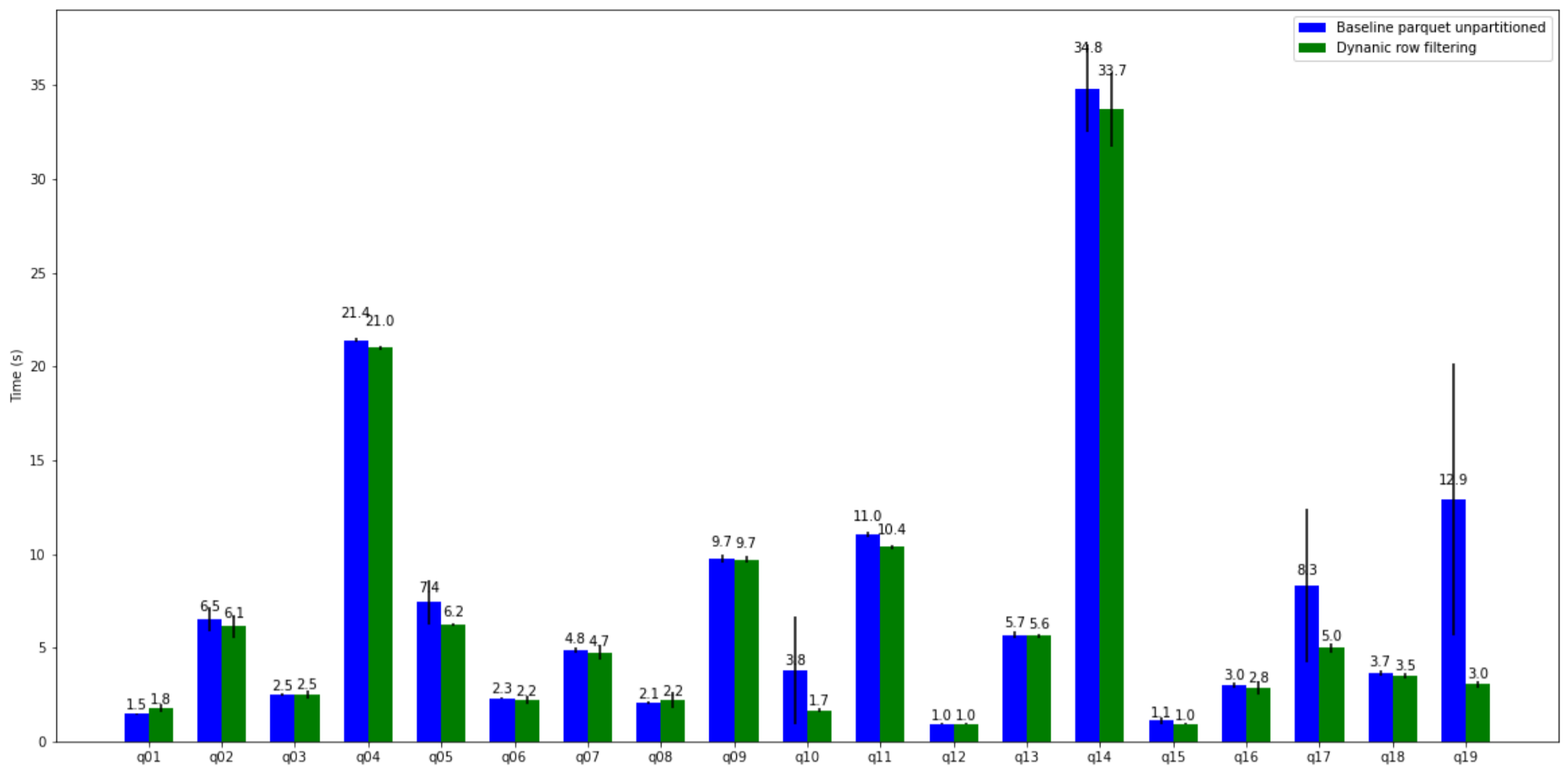
## TPC-H Comparison (DURATION)

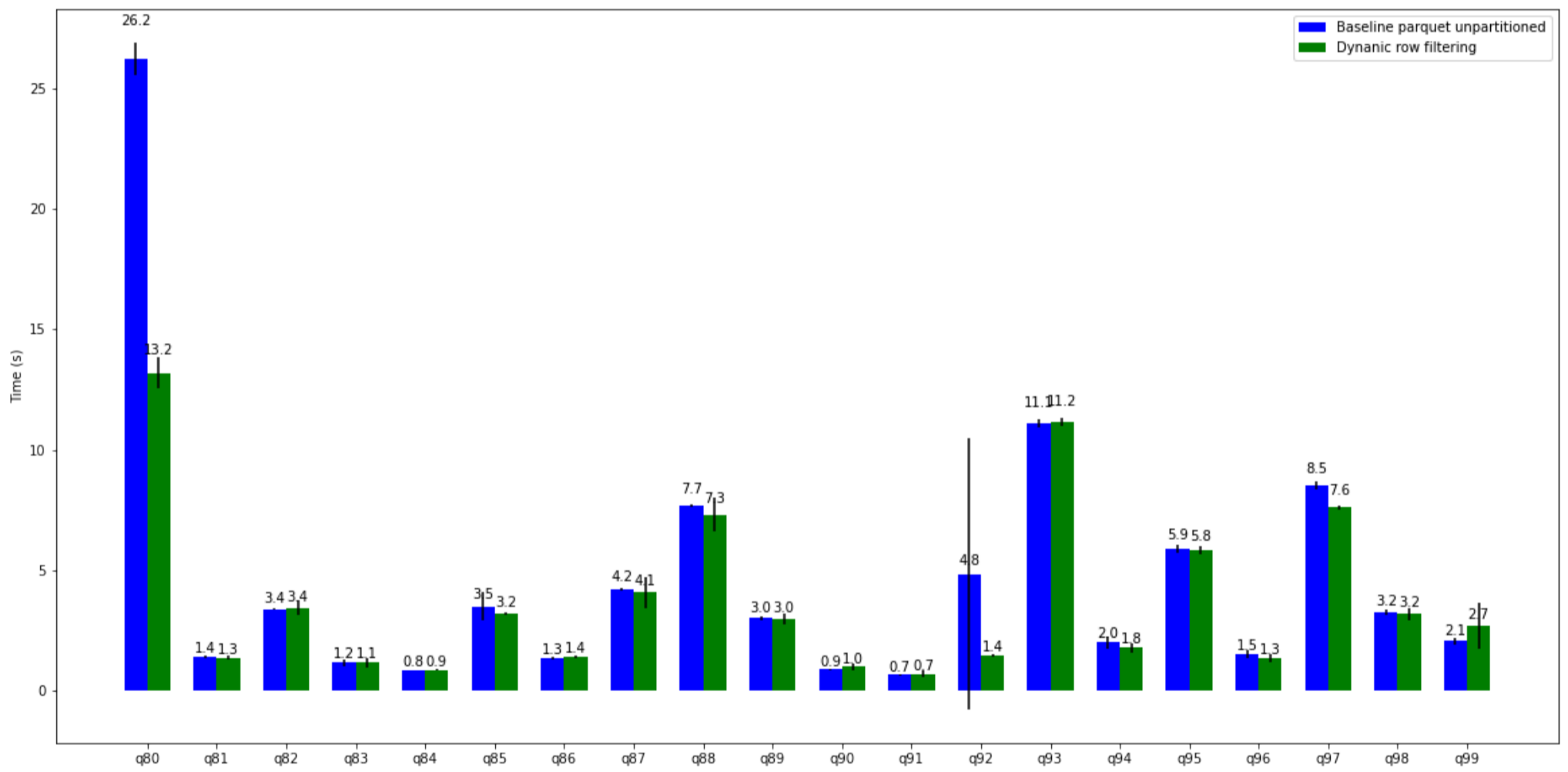
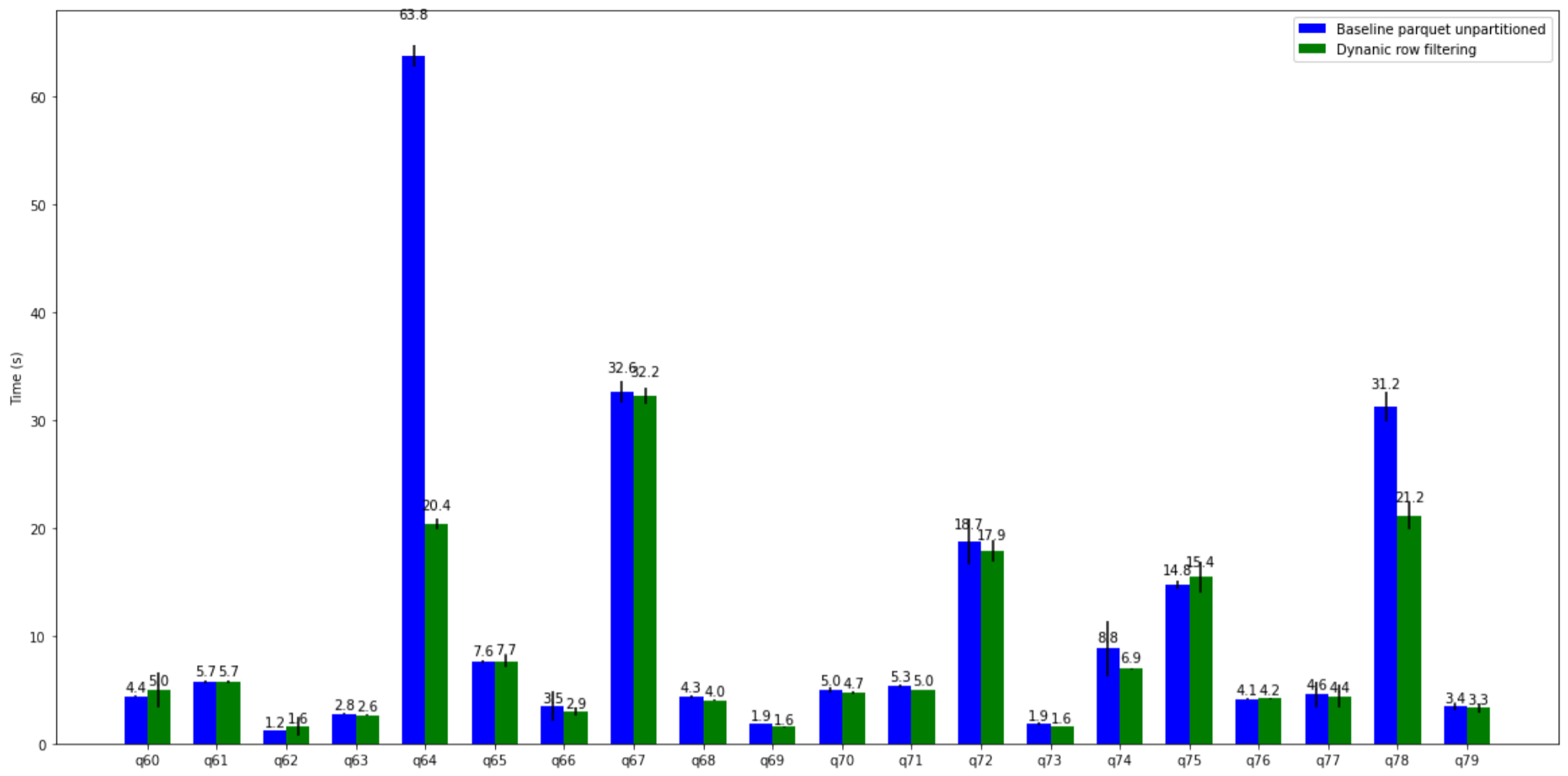




query	Baseline parquet unpartitioned mean	Baseline parquet unpartitioned std.dev	Dynamic row filtering mean	Dynamic row filtering std.dev
0 presto/tpch: q01	7.129500	0.215613	8.182833	2.748381
1 presto/tpch: q02	8.094333	0.098930	9.064167	1.635407
2 presto/tpch: q03	21.448000	7.995000	17.592167	1.012099
3 presto/tpch: q04	6.757833	0.391070	7.217833	0.327937
4 presto/tpch: q05	18.966167	2.082434	18.120167	0.663464
5 presto/tpch: q06	5.265000	0.111449	5.347167	0.250148
6 presto/tpch: q07	14.342833	0.613290	13.672667	0.993049
7 presto/tpch: q08	13.740833	0.242375	13.438000	0.458533
8 presto/tpch: q09	42.770000	1.723178	43.918167	1.173735
9 presto/tpch: q10	14.809833	0.711371	15.789333	1.315138
10 presto/tpch: q11	4.998333	0.117246	5.036333	0.116588
11 presto/tpch: q12	6.123500	0.250030	6.392333	0.355332
12 presto/tpch: q13	8.707167	0.258158	9.183833	0.266963
13 presto/tpch: q14	7.931167	0.198454	7.882167	0.255474
14 presto/tpch: q15	19.975333	8.567040	14.512667	1.021690
15 presto/tpch: q16	3.312167	0.386465	3.171333	0.147033
16 presto/tpch: q17	20.835167	0.669751	21.241667	0.493900
17 presto/tpch: q18	31.044500	2.242023	26.551667	2.283093
18 presto/tpch: q19	10.584833	0.613811	11.478833	2.454674
19 presto/tpch: q20	14.689667	0.563062	15.461833	0.525037
20 presto/tpch: q21	34.267333	1.155226	35.735167	1.152747
21 presto/tpch: q22	2.529833	0.112217	2.651833	0.086231

## TPC-DS Comparison (DURATION)



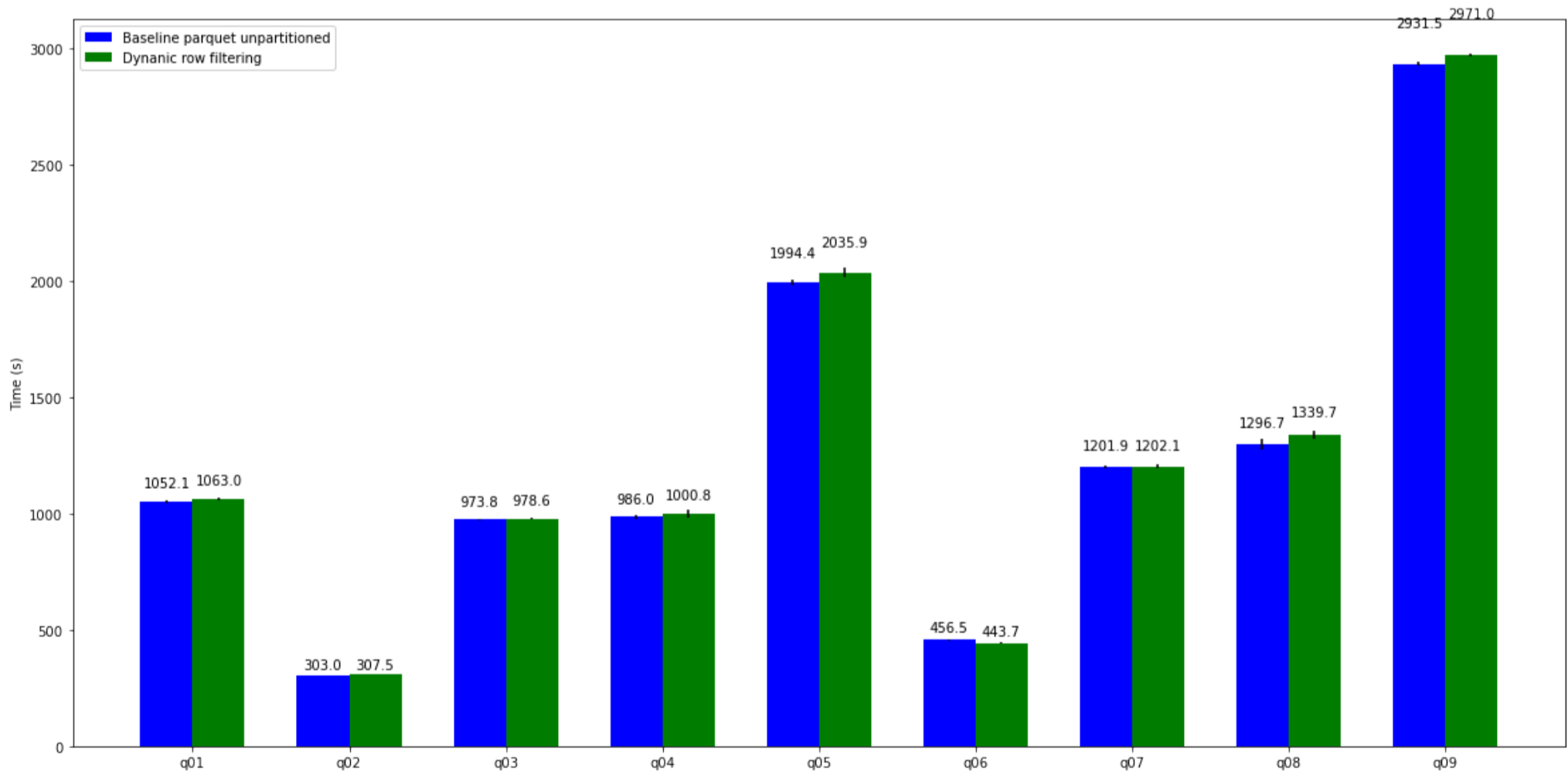


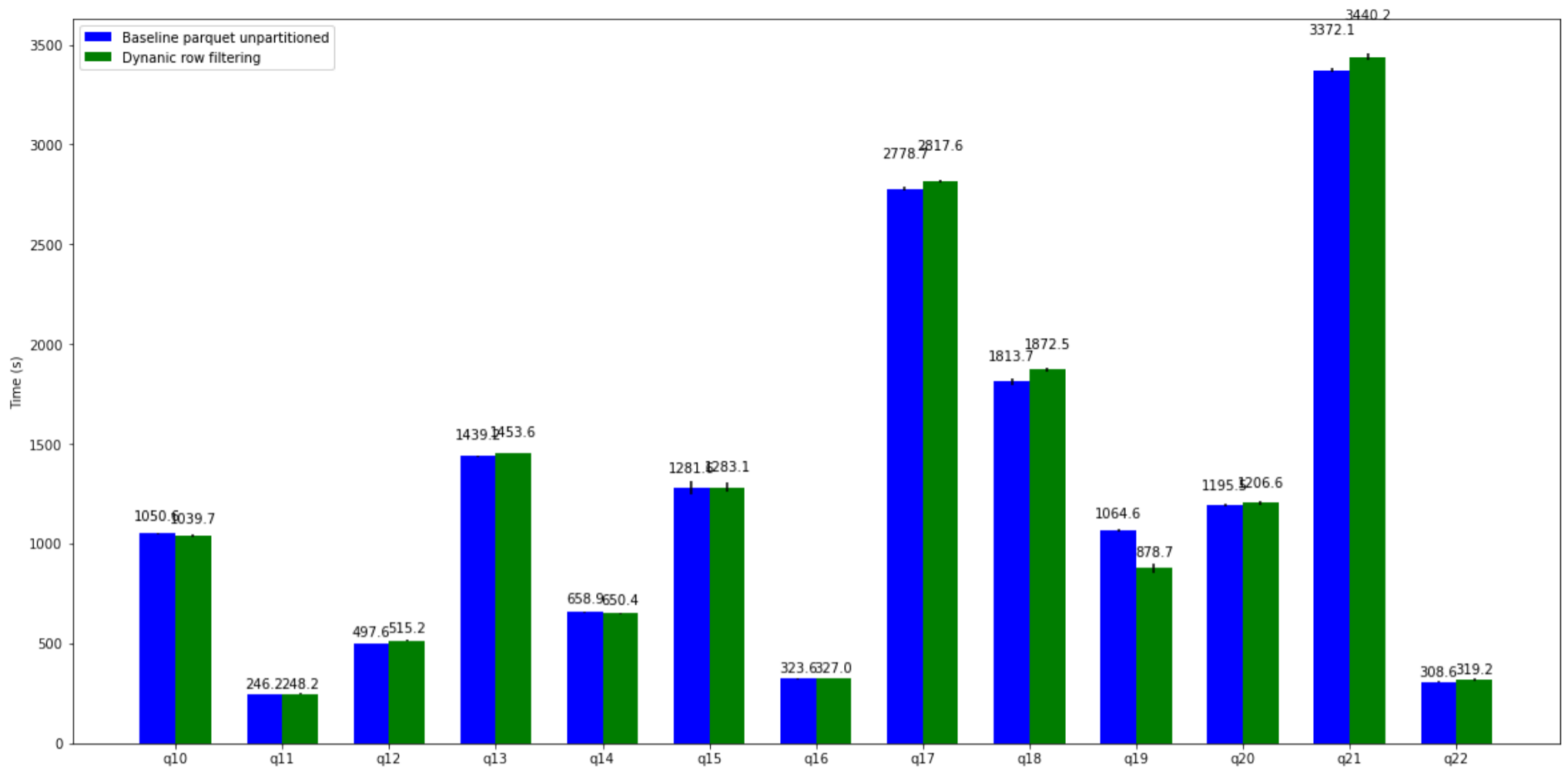
query	Baseline parquet unpartitioned mean	Baseline parquet unpartitioned std.dev	Dynamic row filtering mean	Dynamic row filtering std.dev
0 presto/tpcds: q01	1.459333	0.033237	1.773667	0.198596
1 presto/tpcds: q02	6.516667	0.658310	6.130667	0.584822
2 presto/tpcds: q03	2.477333	0.063755	2.518167	0.215524
3 presto/tpcds: q04	21.404333	0.094587	20.996667	0.126937
4 presto/tpcds: q05	7.433000	1.177250	6.241167	0.097352
5 presto/tpcds: q06	2.299667	0.050111	2.206500	0.226875
6 presto/tpcds: q07	4.841000	0.142595	4.735833	0.396305
7 presto/tpcds: q08	2.069167	0.063187	2.196667	0.434443
8 presto/tpcds: q09	9.738167	0.194916	9.699500	0.192551
9 presto/tpcds: q10	3.778667	2.876945	1.668667	0.126877
10 presto/tpcds: q11	11.036833	0.135427	10.382167	0.114652
11 presto/tpcds: q12	0.954500	0.034046	0.950167	0.055083
12 presto/tpcds: q13	5.679833	0.173859	5.624333	0.113708
13 presto/tpcds: q14	34.838500	2.341693	33.716667	1.986336
14 presto/tpcds: q15	1.109000	0.174778	0.953333	0.051278
15 presto/tpcds: q16	3.027667	0.142023	2.842500	0.368436
16 presto/tpcds: q17	8.336333	4.108804	4.997333	0.265742
17 presto/tpcds: q18	3.679833	0.142220	3.505667	0.156897
18 presto/tpcds: q19	12.920000	7.246927	3.047000	0.203132

	query	Baseline parquet unpartitioned mean	Baseline parquet unpartitioned std.dev	Dynanic row filtering mean	Dynanic row filtering std.dev
19	presto/tpcds: q20	3.466167	1.639488	0.858833	0.035312
20	presto/tpcds: q21	2.245667	0.014306	2.210167	0.037086
21	presto/tpcds: q22	3.103667	0.026875	3.011000	0.023100
22	presto/tpcds: q23	43.814500	1.074138	42.679000	0.976966
23	presto/tpcds: q24	10.919000	0.322030	10.623333	1.088490
24	presto/tpcds: q25	5.675500	0.186873	5.395000	0.140852
25	presto/tpcds: q26	2.572000	0.051567	2.475333	0.065001
26	presto/tpcds: q27	4.546000	0.144760	4.464167	0.912629
27	presto/tpcds: q28	12.872667	0.367021	13.098333	0.968145
28	presto/tpcds: q29	4.963000	0.097941	4.973500	0.225253
29	presto/tpcds: q30	0.960333	0.052229	0.957000	0.041153
30	presto/tpcds: q31	6.250000	0.663723	5.786667	0.199939
31	presto/tpcds: q32	1.984500	0.055824	2.004167	0.072618
32	presto/tpcds: q33	4.201833	0.134452	4.146000	0.572607
33	presto/tpcds: q34	1.983000	0.054384	2.103833	0.733739
34	presto/tpcds: q35	2.075000	0.053781	1.855000	0.049711
35	presto/tpcds: q36	4.306500	1.497286	3.841333	0.925664
36	presto/tpcds: q37	2.657500	0.055334	2.668833	0.158996
37	presto/tpcds: q38	4.178167	0.036273	3.714000	0.045109
38	presto/tpcds: q39	2.387833	0.096140	2.271833	0.041267
39	presto/tpcds: q40	4.982333	0.157171	3.782000	0.159647
40	presto/tpcds: q41	0.145000	0.022181	0.127167	0.007139
41	presto/tpcds: q42	2.536833	0.161657	2.807500	0.665452
42	presto/tpcds: q43	2.253667	0.049923	1.973833	0.045062
43	presto/tpcds: q44	6.416833	0.145047	6.669667	0.514176
44	presto/tpcds: q45	1.087333	0.034051	1.067500	0.044725
45	presto/tpcds: q46	3.130500	0.071757	2.923667	0.079555
46	presto/tpcds: q47	19.962000	0.821439	20.176333	2.415965
47	presto/tpcds: q48	4.286833	0.384804	4.256500	0.653869
48	presto/tpcds: q49	6.617167	0.057266	6.682167	0.219287
49	presto/tpcds: q50	10.472333	0.128904	10.508500	0.388857
50	presto/tpcds: q51	5.468500	0.101024	5.356000	0.134547
51	presto/tpcds: q52	2.605500	0.138839	2.392500	0.073853
52	presto/tpcds: q53	2.906500	0.144058	2.738667	0.111461
53	presto/tpcds: q54	6.901667	0.183326	4.456333	0.797373
54	presto/tpcds: q55	2.488333	0.036936	3.165167	0.625036
55	presto/tpcds: q56	4.569500	1.160263	4.524833	1.373557
56	presto/tpcds: q57	9.121167	0.198254	8.766167	0.298153
57	presto/tpcds: q58	3.828167	0.136121	3.548667	0.128138
58	presto/tpcds: q59	7.698000	0.189226	8.304167	1.241256
59	presto/tpcds: q60	4.401333	0.110592	4.994167	1.596152
60	presto/tpcds: q61	5.740500	0.160061	5.733500	0.080431
61	presto/tpcds: q62	1.236833	0.038369	1.562667	0.866410
62	presto/tpcds: q63	2.764167	0.064089	2.649833	0.051689
63	presto/tpcds: q64	63.762000	0.979752	20.399000	0.493993
64	presto/tpcds: q65	7.628833	0.112691	7.655000	0.522231
65	presto/tpcds: q66	3.450833	1.377355	2.942167	0.375856
66	presto/tpcds: q67	32.596167	0.957708	32.241333	0.738598
67	presto/tpcds: q68	4.341000	0.100541	4.023167	0.068715
68	presto/tpcds: q69	1.852167	0.058253	1.551500	0.042307
69	presto/tpcds: q70	4.991333	0.238252	4.725500	0.135742
70	presto/tpcds: q71	5.336500	0.139562	4.990667	0.044809
71	presto/tpcds: q72	18.738667	2.181711	17.865167	1.024875
72	presto/tpcds: q73	1.863000	0.173925	1.608833	0.034272
73	presto/tpcds: q74	8.807667	2.594777	6.922333	0.069215
74	presto/tpcds: q75	14.756667	0.365791	15.431167	1.418878
75	presto/tpcds: q76	4.129333	0.050718	4.173500	0.115230

	query	Baseline parquet unpartitioned mean	Baseline parquet unpartitioned std.dev	Dynanic row filtering mean	Dynanic row filtering std.dev
76	presto/tpcds: q77	4.570500	1.185163	4.409833	1.046962
77	presto/tpcds: q78	31.193500	1.376249	21.151333	1.253544
78	presto/tpcds: q79	3.415500	0.276934	3.315500	0.455414
79	presto/tpcds: q80	26.249500	0.677943	13.182833	0.650371
80	presto/tpcds: q81	1.374667	0.066518	1.348167	0.073592
81	presto/tpcds: q82	3.371000	0.038346	3.426333	0.303656
82	presto/tpcds: q83	1.162667	0.139839	1.141667	0.217483
83	presto/tpcds: q84	0.827833	0.022781	0.850500	0.038277
84	presto/tpcds: q85	3.494500	0.570399	3.179833	0.071728
85	presto/tpcds: q86	1.338500	0.058309	1.373333	0.062449
86	presto/tpcds: q87	4.191167	0.035239	4.060500	0.640266
87	presto/tpcds: q88	7.674667	0.081340	7.306833	0.698265
88	presto/tpcds: q89	3.000500	0.070427	2.959833	0.236360
89	presto/tpcds: q90	0.866333	0.018544	0.971167	0.163514
90	presto/tpcds: q91	0.653333	0.033464	0.686333	0.159498
91	presto/tpcds: q92	4.827500	5.628966	1.444333	0.056447
92	presto/tpcds: q93	11.111167	0.152484	11.154500	0.142468
93	presto/tpcds: q94	1.984000	0.272072	1.761000	0.191076
94	presto/tpcds: q95	5.861667	0.162030	5.835000	0.180898
95	presto/tpcds: q96	1.508167	0.161155	1.326000	0.161133
96	presto/tpcds: q97	8.499500	0.177760	7.604833	0.070590
97	presto/tpcds: q98	3.235667	0.097132	3.174333	0.255501
98	presto/tpcds: q99	2.053833	0.138132	2.689000	0.946481

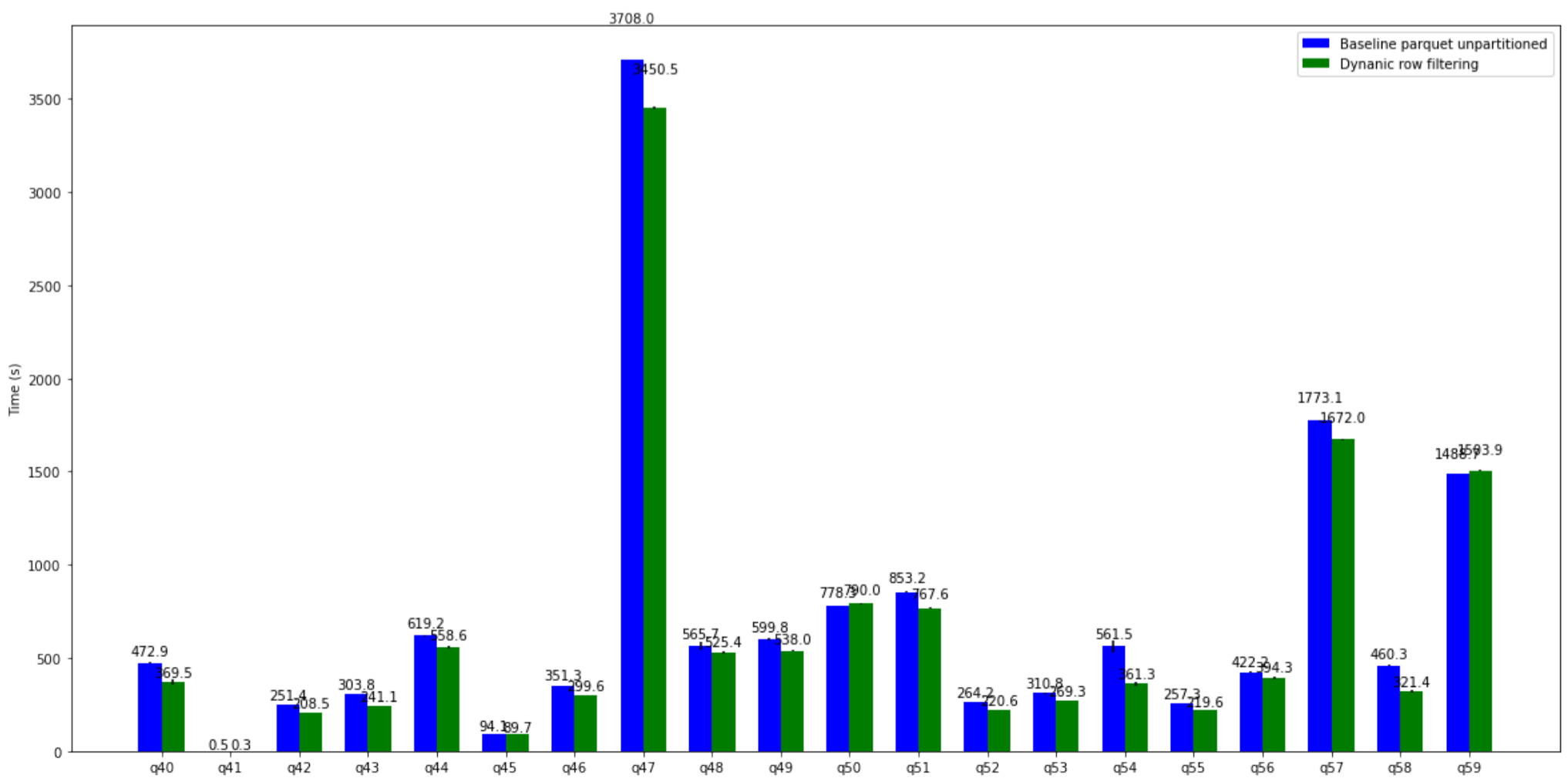
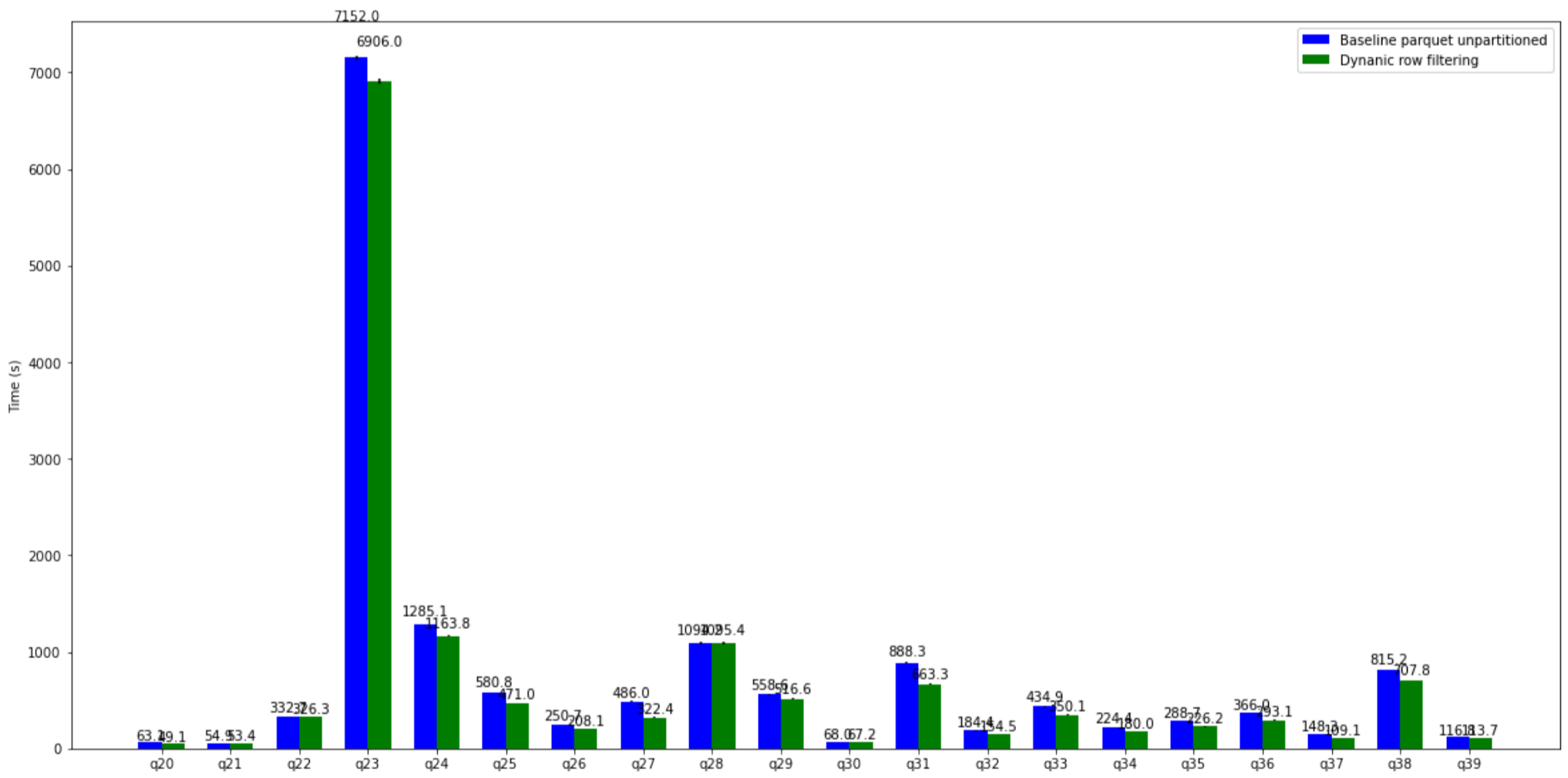
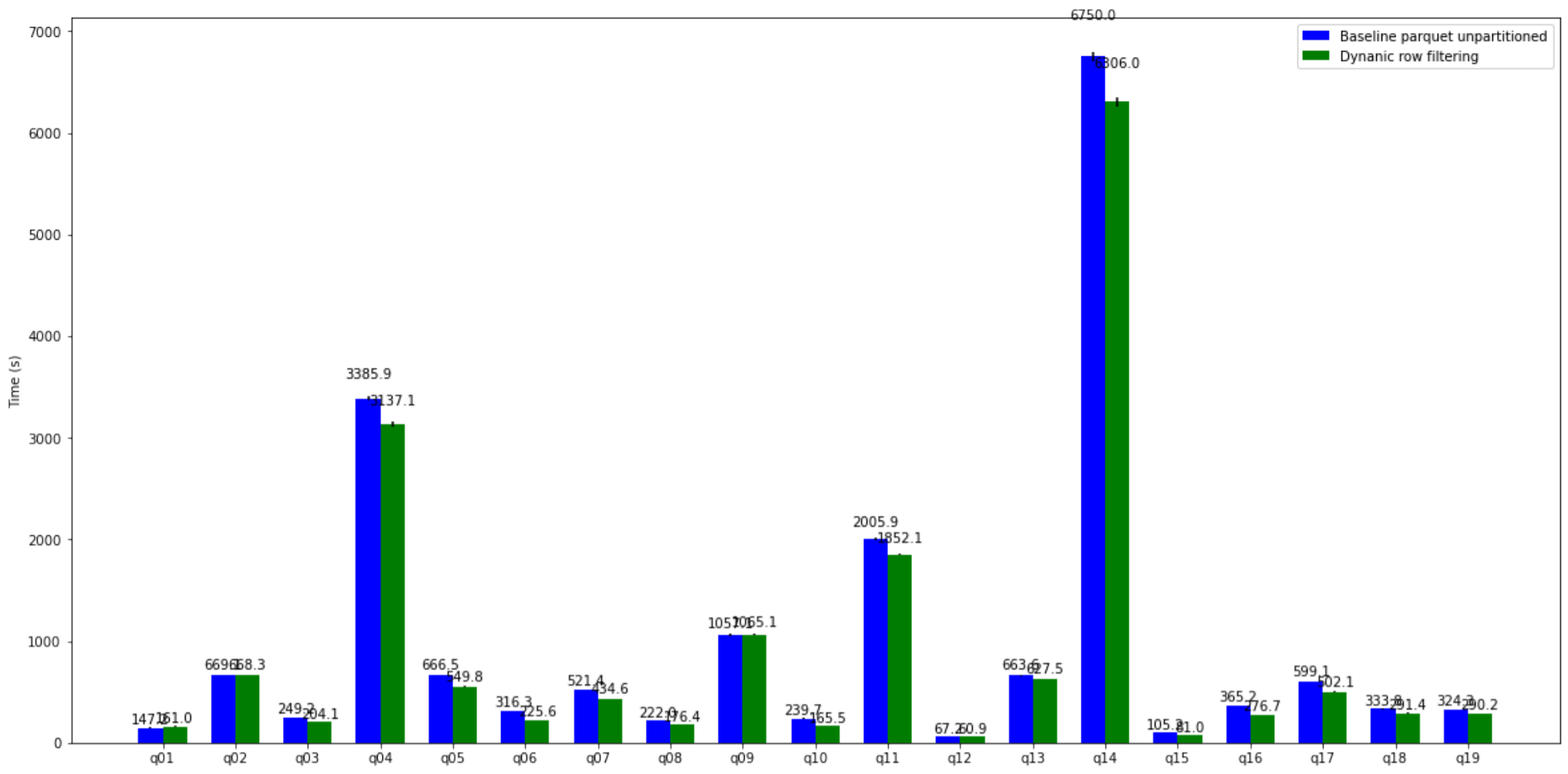
## TPC-H Comparison (CPU)



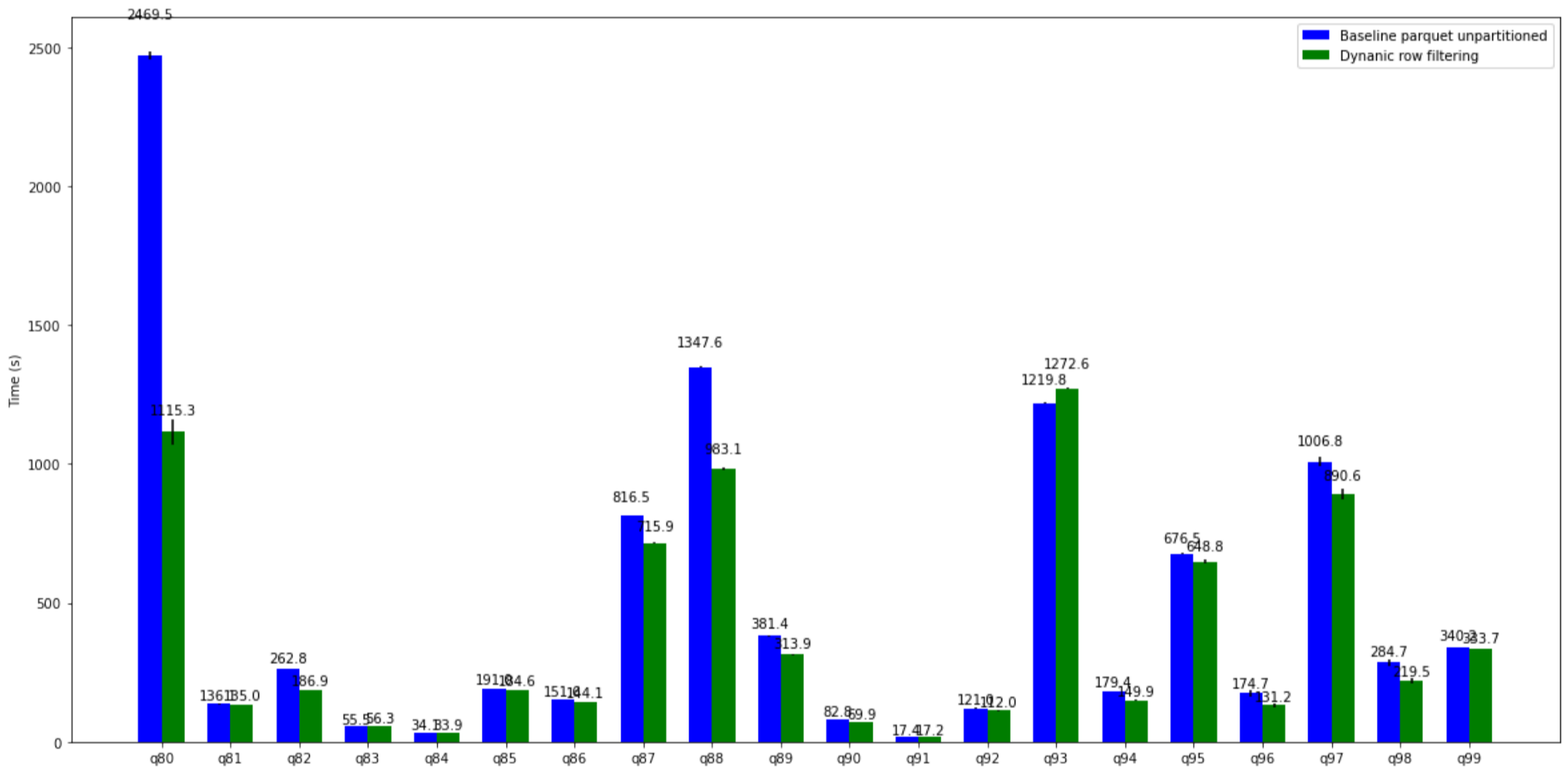
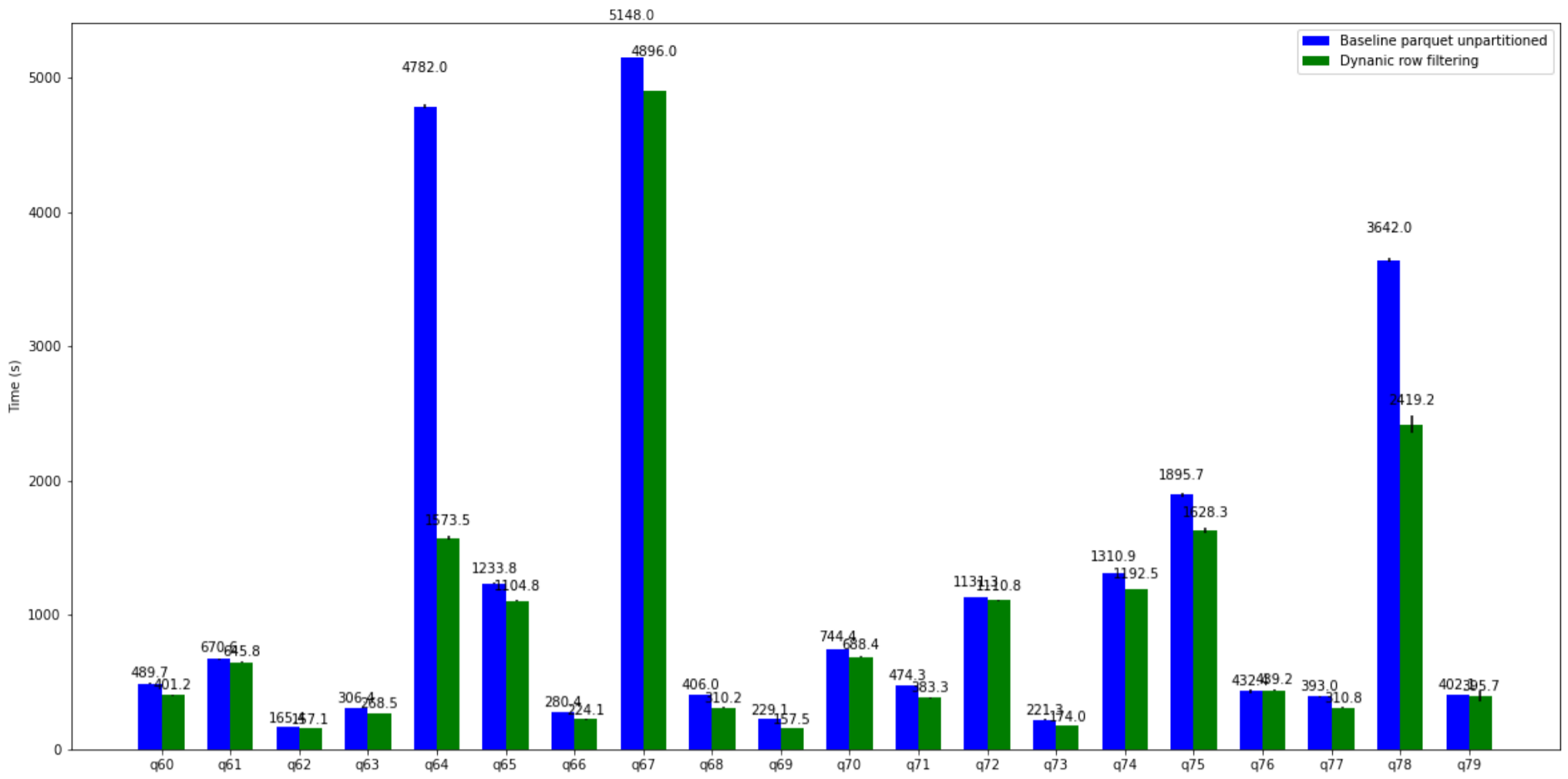


query	Baseline parquet unpartitioned mean	Baseline parquet unpartitioned std.dev	Dynamic row filtering mean	Dynamic row filtering std.dev
0 presto/tpch: q01	1052.1	7.587094	1063.0	6.150122
1 presto/tpch: q02	303.0	2.112818	307.5	0.827043
2 presto/tpch: q03	973.8	3.264353	978.6	5.005597
3 presto/tpch: q04	986.0	6.869061	1000.8	18.356470
4 presto/tpch: q05	1994.4	13.739869	2035.9	20.380285
5 presto/tpch: q06	456.5	2.900345	443.7	1.809972
6 presto/tpch: q07	1201.9	6.040861	1202.1	9.590620
7 presto/tpch: q08	1296.7	22.591945	1339.7	16.029847
8 presto/tpch: q09	2931.5	8.681705	2971.0	5.775812
9 presto/tpch: q10	1050.6	5.854229	1039.7	7.362337
10 presto/tpch: q11	246.2	2.266274	248.2	1.050714
11 presto/tpch: q12	497.6	1.296148	515.2	2.507588
12 presto/tpch: q13	1439.2	1.725109	1453.6	1.846077
13 presto/tpch: q14	658.9	4.041287	650.4	1.859032
14 presto/tpch: q15	1281.6	35.394915	1283.1	24.139843
15 presto/tpch: q16	323.6	3.256992	327.0	0.379473
16 presto/tpch: q17	2778.7	10.192350	2817.6	8.191703
17 presto/tpch: q18	1813.7	15.689359	1872.5	10.756022
18 presto/tpch: q19	1064.6	7.403783	878.7	23.887989
19 presto/tpch: q20	1195.5	5.688937	1206.6	10.189406
20 presto/tpch: q21	3372.1	9.134331	3440.2	16.487086
21 presto/tpch: q22	308.6	2.979933	319.2	4.174207

## TPC-DS Comparison (CPU)





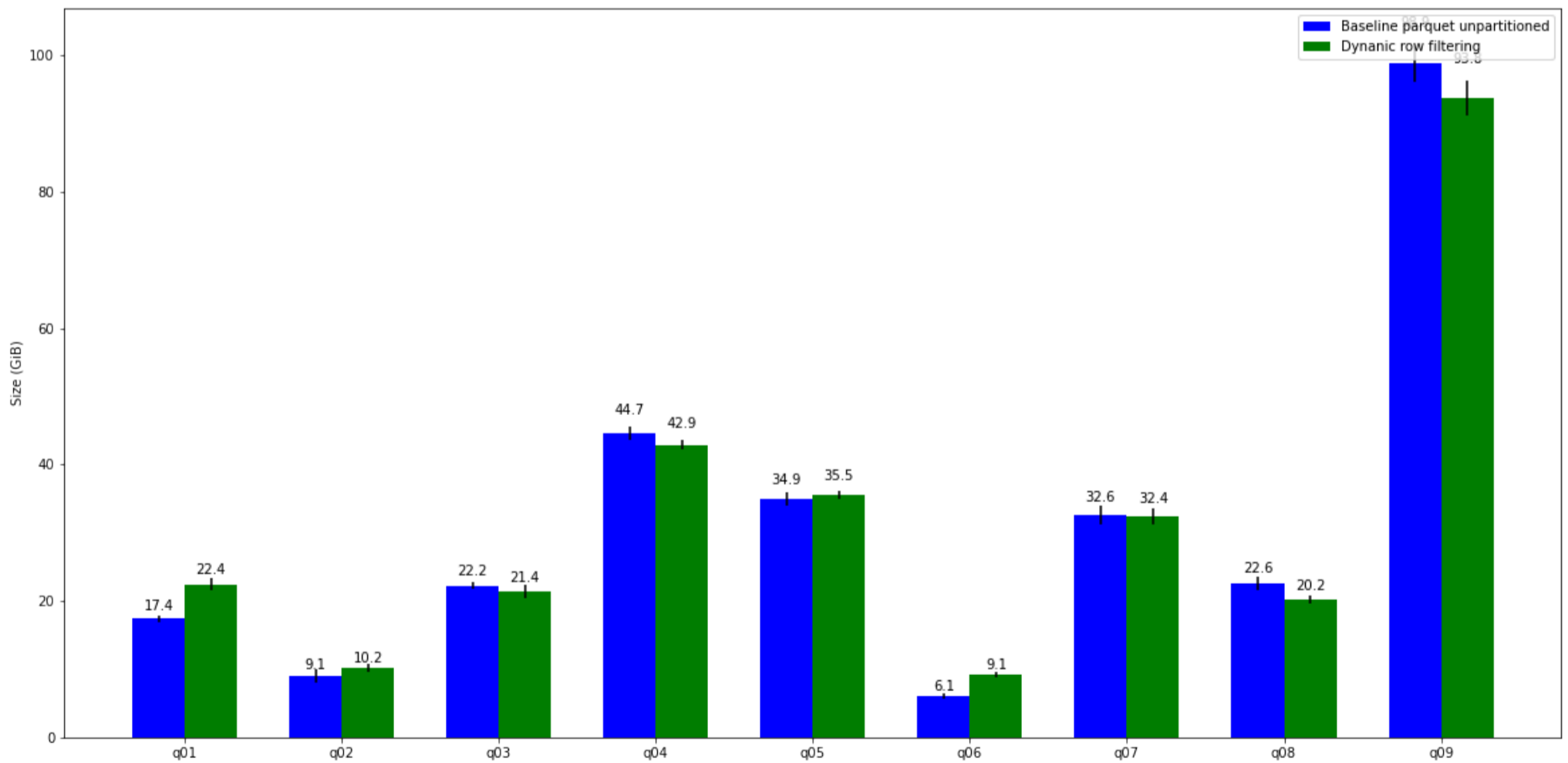


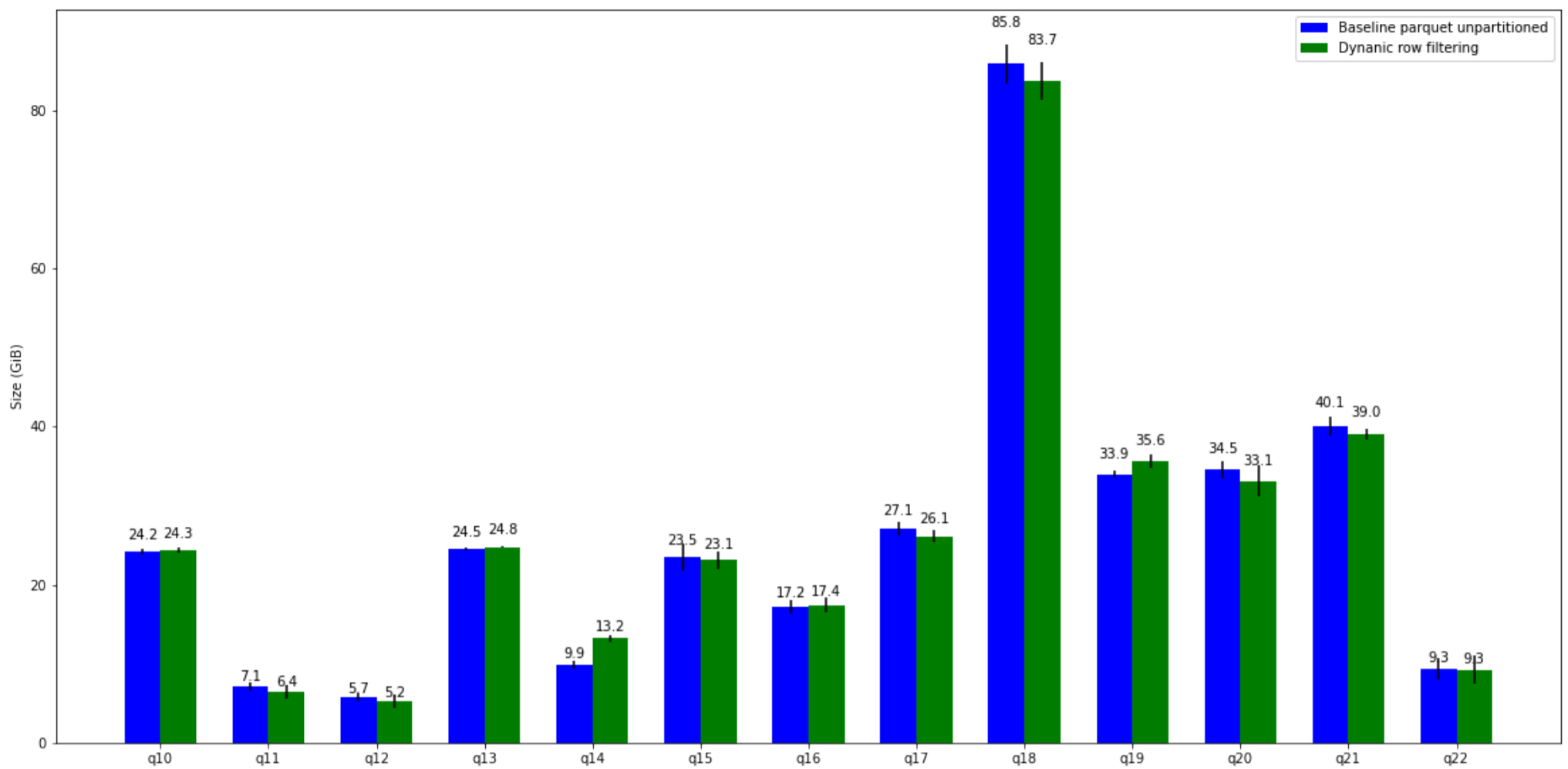
query	Baseline parquet unpartitioned mean	Baseline parquet unpartitioned std.dev	Dynamic row filtering mean	Dynamic row filtering std.dev
0 presto/tpcds: q01	147.200000	2.031748	161.000000	7.856717
1 presto/tpcds: q02	669.100000	2.258318	668.300000	3.317228
2 presto/tpcds: q03	249.200000	1.179830	204.100000	1.583667
3 presto/tpcds: q04	3385.900000	22.154277	3137.100000	24.955240
4 presto/tpcds: q05	666.500000	2.997999	549.800000	5.886935
5 presto/tpcds: q06	316.300000	0.589915	225.600000	0.848528
6 presto/tpcds: q07	521.400000	1.609969	434.600000	1.806654
7 presto/tpcds: q08	222.000000	0.657267	176.400000	0.379473
8 presto/tpcds: q09	1057.100000	11.936331	1065.100000	3.951202
9 presto/tpcds: q10	239.700000	0.629285	165.500000	1.224745
10 presto/tpcds: q11	2005.900000	7.650098	1852.100000	3.802631
11 presto/tpcds: q12	67.200000	0.000000	60.900000	0.328634
12 presto/tpcds: q13	663.600000	6.594543	627.500000	6.286175
13 presto/tpcds: q14	6750.000000	44.090815	6306.000000	47.849765
14 presto/tpcds: q15	105.200000	0.489898	81.000000	0.536656
15 presto/tpcds: q16	365.200000	1.453272	276.700000	0.797496
16 presto/tpcds: q17	599.100000	1.300769	502.100000	6.718035
17 presto/tpcds: q18	333.800000	1.959592	291.400000	1.453272
18 presto/tpcds: q19	324.300000	1.849324	290.200000	0.979796

	query	Baseline parquet unpartitioned mean	Baseline parquet unpartitioned std.dev	Dynanic row filtering mean	Dynanic row filtering std.dev
19	presto/tpcds: q20	63.100000	0.244949	49.123333	0.373934
20	presto/tpcds: q21	54.898333	0.317453	53.361667	0.375042
21	presto/tpcds: q22	332.700000	1.457395	326.300000	1.628496
22	presto/tpcds: q23	7152.000000	18.590320	6906.000000	27.099815
23	presto/tpcds: q24	1285.100000	5.672037	1163.800000	5.713143
24	presto/tpcds: q25	580.800000	3.308172	471.000000	3.197499
25	presto/tpcds: q26	250.700000	2.747362	208.100000	1.033441
26	presto/tpcds: q27	486.000000	5.393329	322.400000	1.806654
27	presto/tpcds: q28	1094.200000	9.856571	1095.400000	15.043936
28	presto/tpcds: q29	558.600000	1.314534	516.600000	2.212691
29	presto/tpcds: q30	68.000000	0.489898	67.200000	0.379473
30	presto/tpcds: q31	888.300000	4.100244	663.300000	7.177465
31	presto/tpcds: q32	184.400000	0.619677	154.500000	0.629285
32	presto/tpcds: q33	434.900000	1.389964	350.100000	2.509980
33	presto/tpcds: q34	224.400000	0.536656	180.000000	0.929516
34	presto/tpcds: q35	288.700000	0.701427	226.200000	1.138420
35	presto/tpcds: q36	366.000000	0.758947	293.100000	4.469899
36	presto/tpcds: q37	148.300000	0.244949	109.100000	0.244949
37	presto/tpcds: q38	815.200000	1.725109	707.800000	1.682855
38	presto/tpcds: q39	116.800000	0.489898	113.700000	0.629285
39	presto/tpcds: q40	472.900000	4.880574	369.500000	13.493554
40	presto/tpcds: q41	0.507500	0.006504	0.338833	0.004070
41	presto/tpcds: q42	251.400000	0.536656	208.500000	1.184905
42	presto/tpcds: q43	303.800000	0.726636	241.100000	0.701427
43	presto/tpcds: q44	619.200000	1.654086	558.600000	7.551424
44	presto/tpcds: q45	94.100000	0.883176	89.700000	1.056409
45	presto/tpcds: q46	351.300000	1.457395	299.600000	0.726636
46	presto/tpcds: q47	3708.000000	0.000000	3450.500000	5.372150
47	presto/tpcds: q48	565.700000	20.373218	525.400000	7.085760
48	presto/tpcds: q49	599.800000	7.186654	538.000000	2.168871
49	presto/tpcds: q50	778.300000	0.883176	790.000000	1.594992
50	presto/tpcds: q51	853.200000	1.971801	767.600000	5.072278
51	presto/tpcds: q52	264.200000	1.296148	220.600000	1.766352
52	presto/tpcds: q53	310.800000	2.429815	269.300000	0.883176
53	presto/tpcds: q54	561.500000	34.161909	361.300000	8.615103
54	presto/tpcds: q55	257.300000	1.537530	219.600000	1.073313
55	presto/tpcds: q56	422.200000	4.468557	394.300000	5.992996
56	presto/tpcds: q57	1773.100000	4.622986	1672.000000	4.081176
57	presto/tpcds: q58	460.300000	2.721029	321.400000	6.879535
58	presto/tpcds: q59	1488.700000	1.389964	1503.900000	2.858671
59	presto/tpcds: q60	489.700000	5.465162	401.200000	2.359661
60	presto/tpcds: q61	670.600000	6.623594	645.800000	6.114900
61	presto/tpcds: q62	165.400000	0.309839	157.100000	0.589915
62	presto/tpcds: q63	306.400000	1.959592	268.500000	2.204541
63	presto/tpcds: q64	4782.000000	14.696938	1573.500000	13.006306
64	presto/tpcds: q65	1233.800000	3.882267	1104.800000	4.657897
65	presto/tpcds: q66	280.400000	0.489898	224.100000	2.622213
66	presto/tpcds: q67	5148.000000	0.000000	4896.000000	0.000000
67	presto/tpcds: q68	406.000000	3.844997	310.200000	7.358261
68	presto/tpcds: q69	229.100000	0.244949	157.500000	1.184905
69	presto/tpcds: q70	744.400000	1.766352	688.400000	1.501999
70	presto/tpcds: q71	474.300000	2.362202	383.300000	2.747362
71	presto/tpcds: q72	1131.300000	3.053523	1110.800000	4.704041
72	presto/tpcds: q73	221.300000	0.701427	174.000000	0.379473
73	presto/tpcds: q74	1310.900000	2.226208	1192.500000	3.191865
74	presto/tpcds: q75	1895.700000	16.017865	1628.300000	22.072879
75	presto/tpcds: q76	432.400000	12.300244	439.200000	3.737379

query	Baseline parquet unpartitioned mean	Baseline parquet unpartitioned std.dev	Dynanic row filtering mean	Dynanic row filtering std.dev	
76	presto/tpcds: q77	393.000000	5.717342	310.800000	3.698648
77	presto/tpcds: q78	3642.000000	14.696938	2419.200000	60.889802
78	presto/tpcds: q79	402.100000	1.033441	395.700000	37.479114
79	presto/tpcds: q80	2469.500000	14.180409	1115.300000	44.581925
80	presto/tpcds: q81	136.100000	1.583667	135.000000	0.379473
81	presto/tpcds: q82	262.800000	0.657267	186.900000	0.501996
82	presto/tpcds: q83	55.455000	0.606127	56.261667	0.148110
83	presto/tpcds: q84	34.141667	0.190832	33.938333	0.218029
84	presto/tpcds: q85	191.000000	0.619677	184.600000	0.619677
85	presto/tpcds: q86	151.600000	0.489898	144.100000	0.451664
86	presto/tpcds: q87	816.500000	0.451664	715.900000	3.914588
87	presto/tpcds: q88	1347.600000	2.146625	983.100000	4.596956
88	presto/tpcds: q89	381.400000	1.725109	313.900000	2.258318
89	presto/tpcds: q90	82.800000	0.000000	69.900000	0.734847
90	presto/tpcds: q91	17.428333	0.136149	17.243333	0.088242
91	presto/tpcds: q92	121.000000	0.819756	112.000000	0.619677
92	presto/tpcds: q93	1219.800000	3.415260	1272.600000	2.146625
93	presto/tpcds: q94	179.400000	0.000000	149.900000	1.913113
94	presto/tpcds: q95	676.500000	1.728583	648.800000	6.346022
95	presto/tpcds: q96	174.700000	13.391789	131.200000	7.938766
96	presto/tpcds: q97	1006.800000	16.566955	890.600000	20.602524
97	presto/tpcds: q98	284.700000	10.535084	219.500000	11.291590
98	presto/tpcds: q99	340.200000	1.258571	333.700000	0.451664

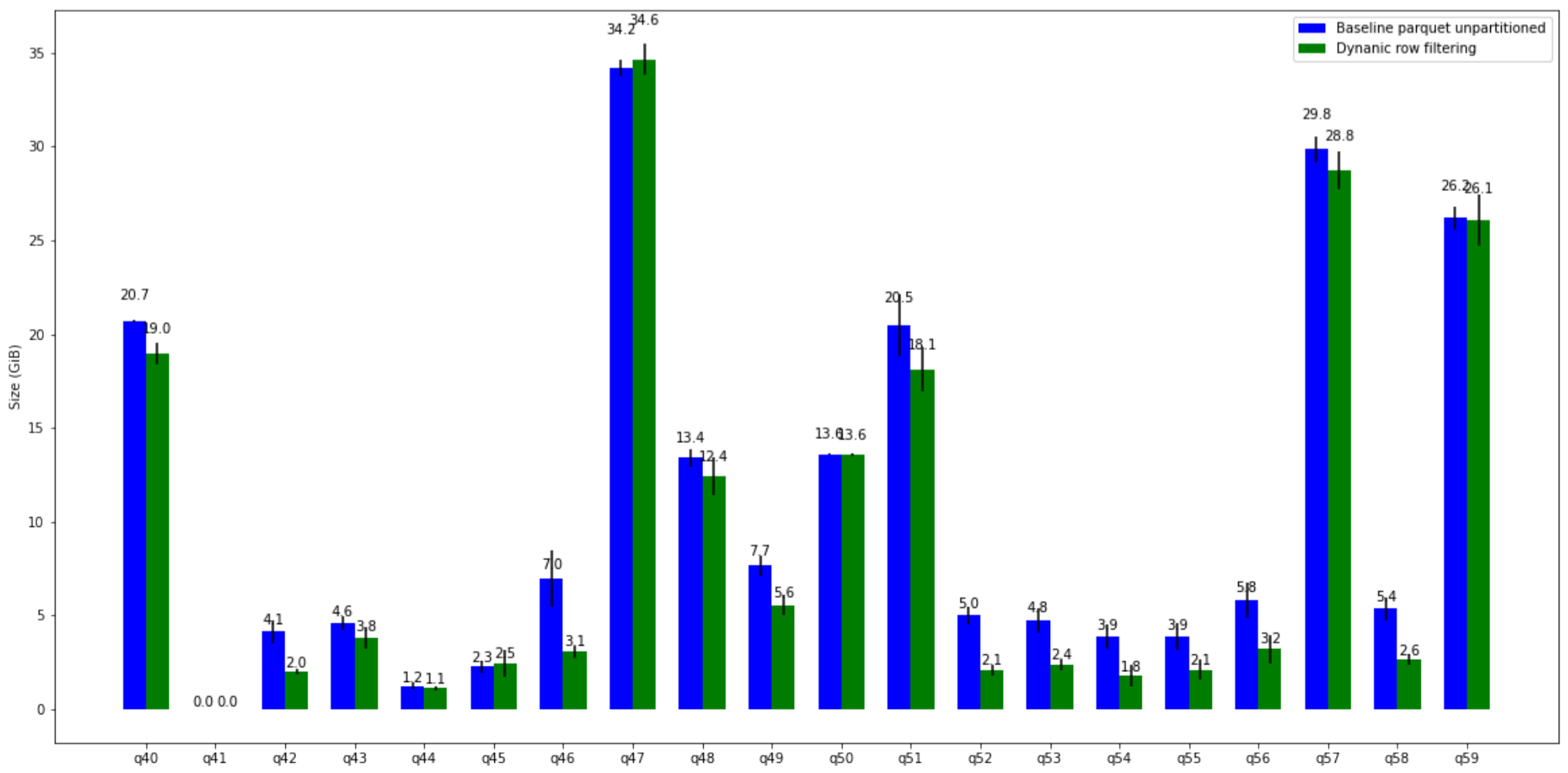
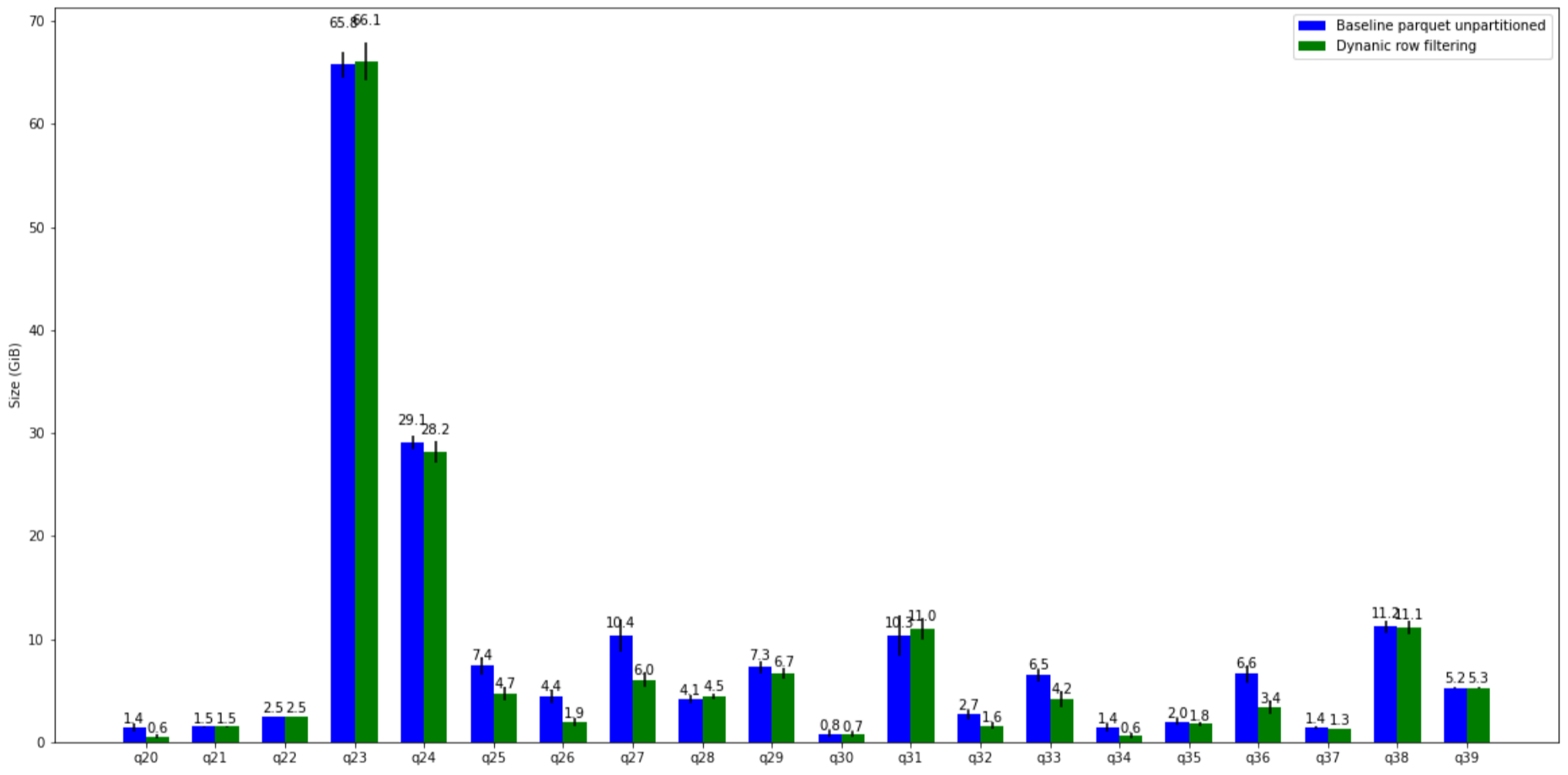
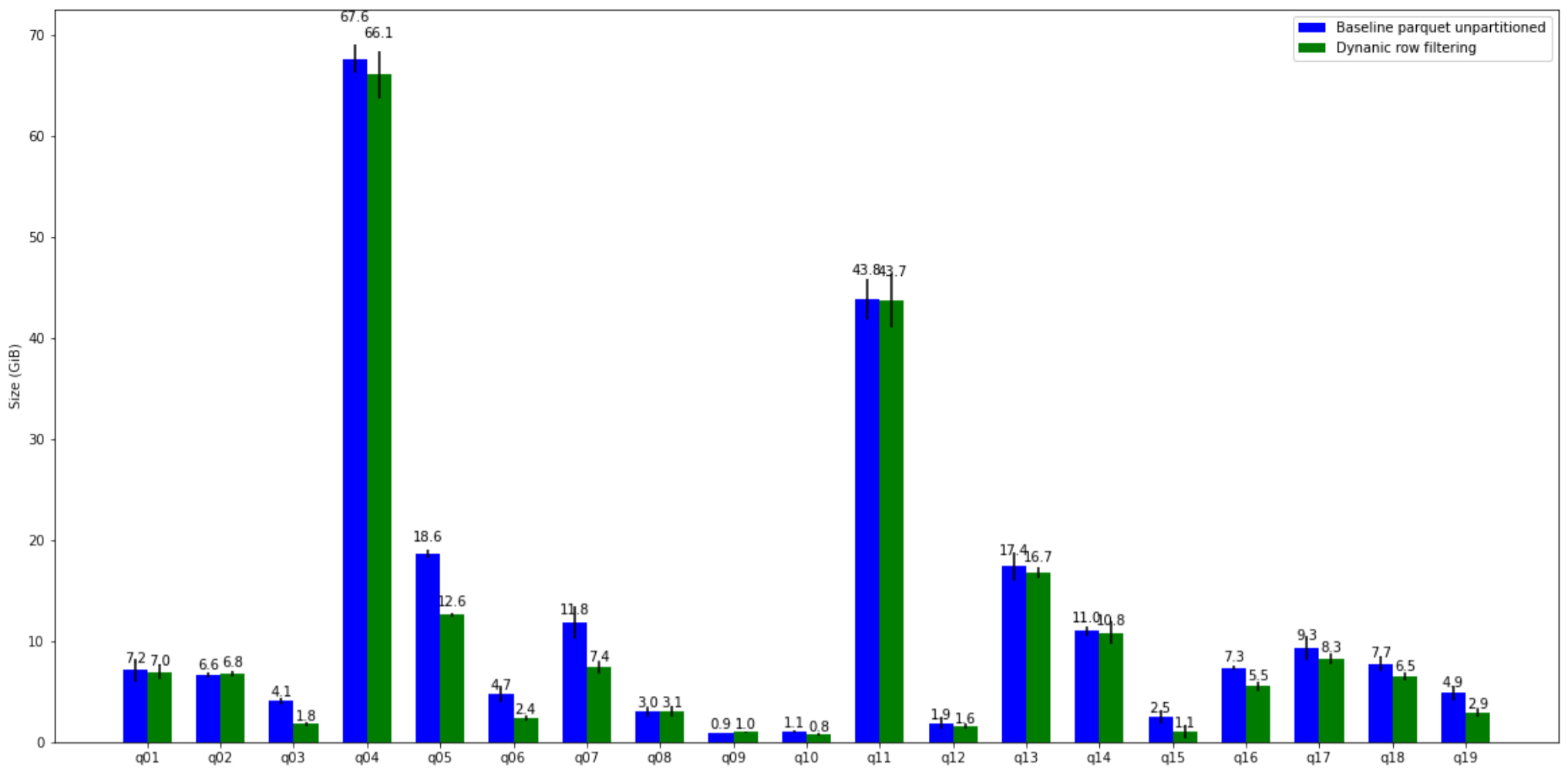
## TPC-H Comparison (Peak memory)

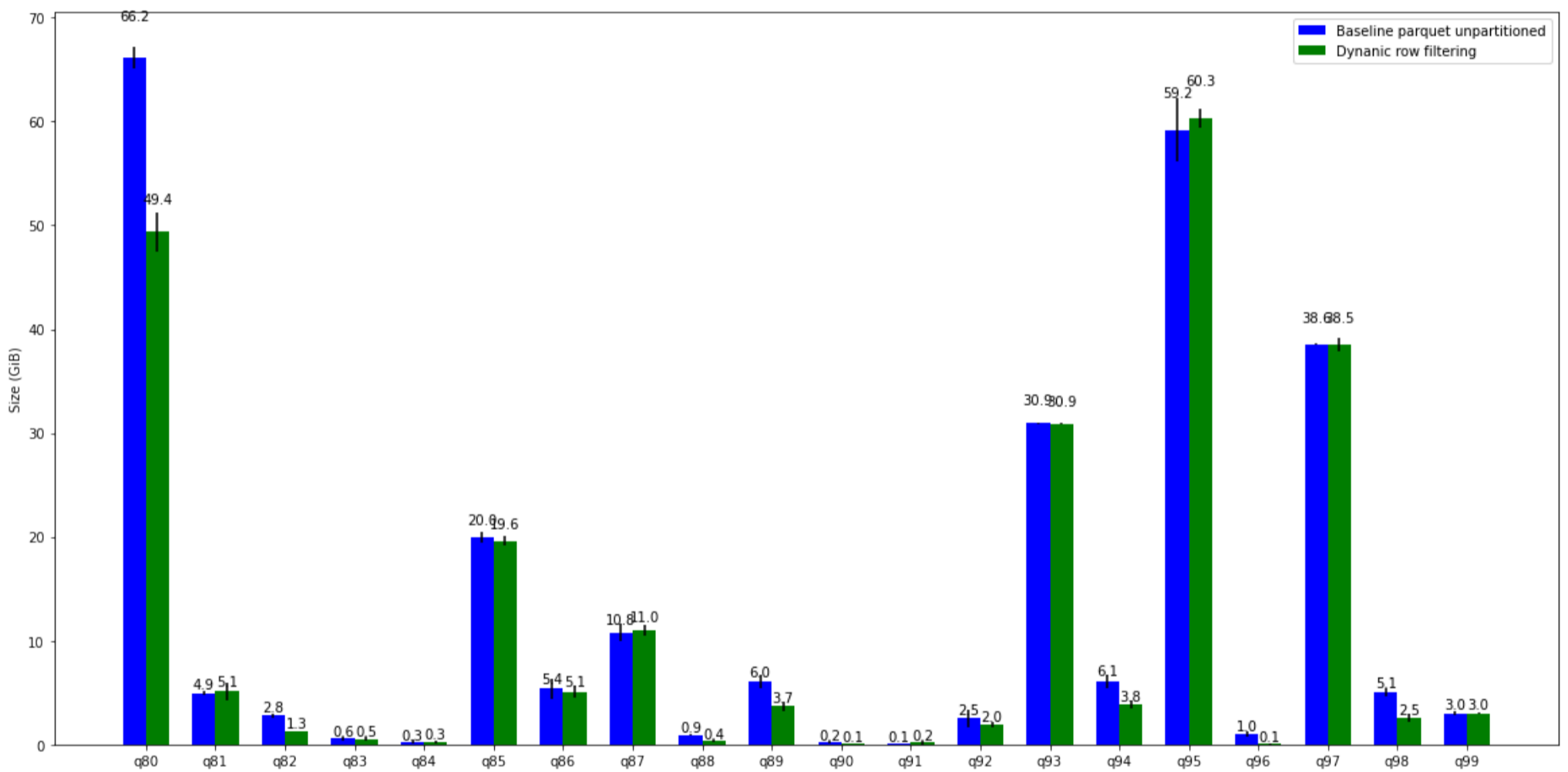
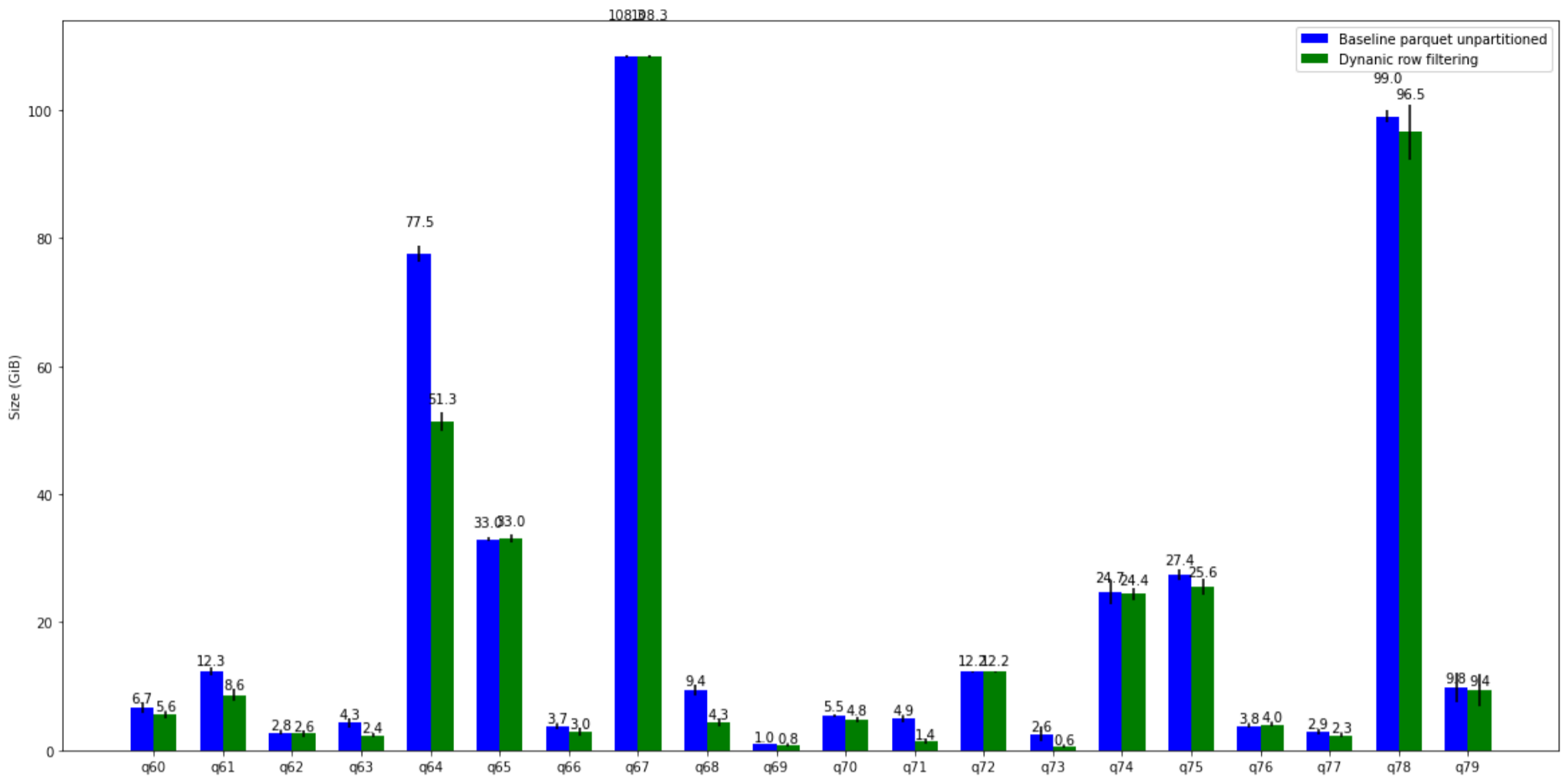




query	Baseline parquet unpartitioned mean	Baseline parquet unpartitioned std.dev	Dynamic row filtering mean	Dynamic row filtering std.dev
0 presto/tpch: q01	17.431 GiB	505.446 MiB	22.436 GiB	853.705 MiB
1 presto/tpch: q02	9.054 GiB	1.020 GiB	10.164 GiB	635.409 MiB
2 presto/tpch: q03	22.198 GiB	486.902 MiB	21.387 GiB	1.032 GiB
3 presto/tpch: q04	44.660 GiB	0.984 GiB	42.871 GiB	707.172 MiB
4 presto/tpch: q05	34.918 GiB	0.960 GiB	35.526 GiB	680.928 MiB
5 presto/tpch: q06	6.058 GiB	394.769 MiB	9.138 GiB	437.206 MiB
6 presto/tpch: q07	32.568 GiB	1.343 GiB	32.374 GiB	1.179 GiB
7 presto/tpch: q08	22.626 GiB	0.949 GiB	20.205 GiB	588.058 MiB
8 presto/tpch: q09	98.879 GiB	2.886 GiB	93.795 GiB	2.572 GiB
9 presto/tpch: q10	24.184 GiB	357.401 MiB	24.308 GiB	330.603 MiB
10 presto/tpch: q11	7.115 GiB	507.898 MiB	6.447 GiB	811.926 MiB
11 presto/tpch: q12	5.724 GiB	525.938 MiB	5.194 GiB	883.733 MiB
12 presto/tpch: q13	24.454 GiB	166.661 MiB	24.752 GiB	144.038 MiB
13 presto/tpch: q14	9.903 GiB	512.212 MiB	13.184 GiB	441.380 MiB
14 presto/tpch: q15	23.547 GiB	1.674 GiB	23.090 GiB	1.150 GiB
15 presto/tpch: q16	17.152 GiB	872.933 MiB	17.405 GiB	0.971 GiB
16 presto/tpch: q17	27.087 GiB	836.394 MiB	26.087 GiB	797.031 MiB
17 presto/tpch: q18	85.837 GiB	2.441 GiB	83.743 GiB	2.405 GiB
18 presto/tpch: q19	33.923 GiB	421.054 MiB	35.552 GiB	881.767 MiB
19 presto/tpch: q20	34.512 GiB	1.066 GiB	33.123 GiB	2.010 GiB
20 presto/tpch: q21	40.086 GiB	1.162 GiB	38.994 GiB	728.545 MiB
21 presto/tpch: q22	9.335 GiB	1.397 GiB	9.253 GiB	1.775 GiB

## TPC-DS Comparison (Peak memory)





query	Baseline parquet unpartitioned mean	Baseline parquet unpartitioned std.dev	Dynamic row filtering mean	Dynamic row filtering std.dev
0 presto/tpcds: q01	7.151 GiB	1.147 GiB	6.969 GiB	783.241 MiB
1 presto/tpcds: q02	6.620 GiB	229.637 MiB	6.776 GiB	286.846 MiB
2 presto/tpcds: q03	4.052 GiB	316.711 MiB	1.781 GiB	240.294 MiB
3 presto/tpcds: q04	67.585 GiB	1.424 GiB	66.060 GiB	2.309 GiB
4 presto/tpcds: q05	18.608 GiB	439.692 MiB	12.573 GiB	268.835 MiB
5 presto/tpcds: q06	4.727 GiB	832.767 MiB	2.399 GiB	261.458 MiB
6 presto/tpcds: q07	11.789 GiB	1.610 GiB	7.372 GiB	593.811 MiB
7 presto/tpcds: q08	2.981 GiB	453.470 MiB	3.051 GiB	573.842 MiB
8 presto/tpcds: q09	0.930 GiB	36.741 MiB	0.998 GiB	51.510 MiB
9 presto/tpcds: q10	1.090 GiB	146.654 MiB	812.166 MiB	103.148 MiB
10 presto/tpcds: q11	43.814 GiB	1.977 GiB	43.696 GiB	2.668 GiB
11 presto/tpcds: q12	1.882 GiB	597.121 MiB	1.558 GiB	235.334 MiB
12 presto/tpcds: q13	17.369 GiB	1.334 GiB	16.714 GiB	535.261 MiB
13 presto/tpcds: q14	11.005 GiB	501.649 MiB	10.829 GiB	1.156 GiB
14 presto/tpcds: q15	2.528 GiB	712.071 MiB	1.062 GiB	671.116 MiB
15 presto/tpcds: q16	7.345 GiB	198.394 MiB	5.516 GiB	496.463 MiB
16 presto/tpcds: q17	9.330 GiB	1.201 GiB	8.274 GiB	532.454 MiB
17 presto/tpcds: q18	7.723 GiB	754.068 MiB	6.462 GiB	386.190 MiB

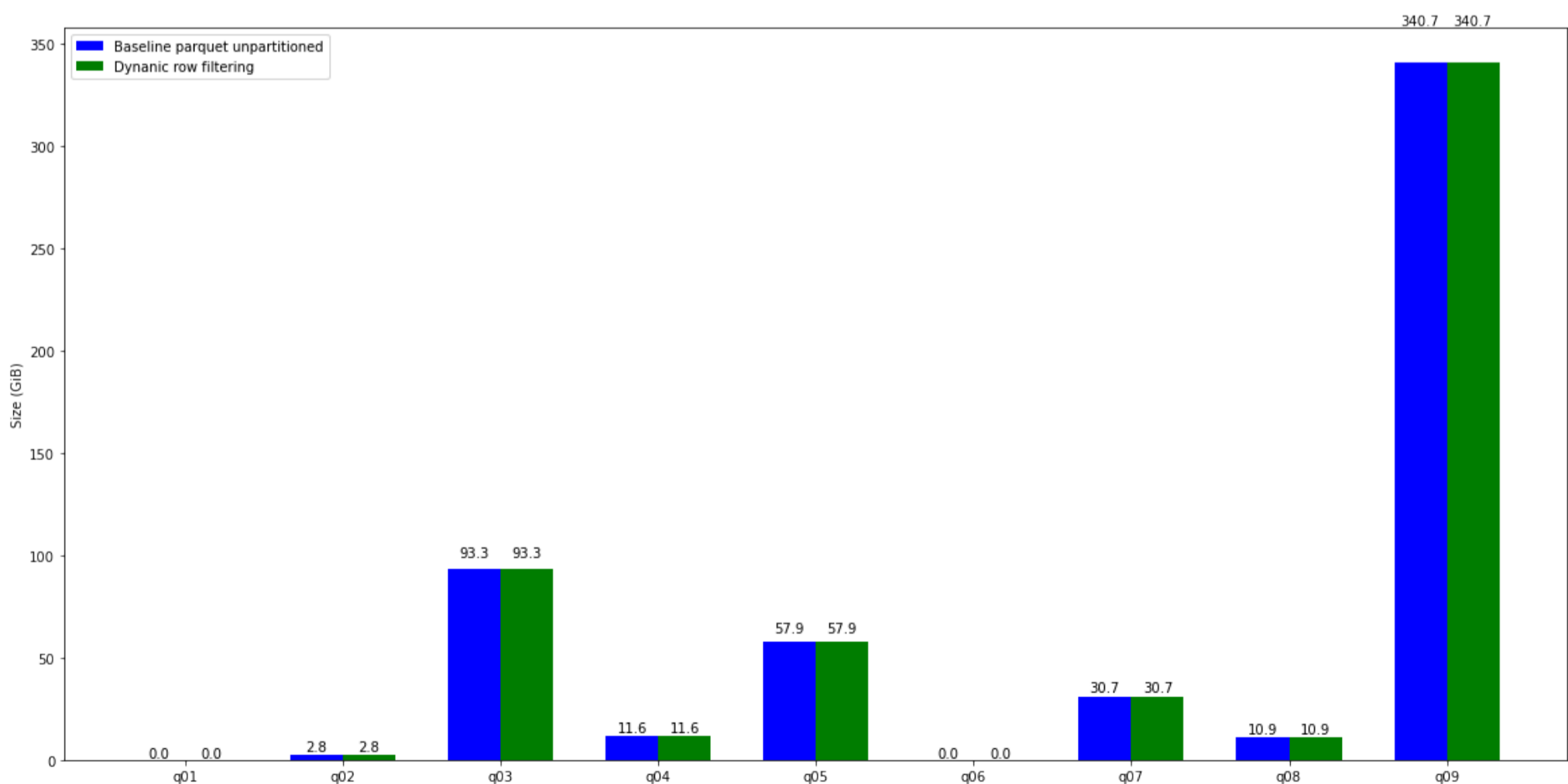
	query	Baseline parquet unpartitioned mean	Baseline parquet unpartitioned std.dev	Dynanic row filtering mean	Dynanic row filtering std.dev
18	presto/tpcds: q19	4.866 GiB	746.235 MiB	2.924 GiB	423.991 MiB
19	presto/tpcds: q20	1.443 GiB	440.785 MiB	572.374 MiB	245.141 MiB
20	presto/tpcds: q21	1.521 GiB	41.285 MiB	1.512 GiB	37.193 MiB
21	presto/tpcds: q22	2.506 GiB	7.654 MiB	2.508 GiB	6.280 MiB
22	presto/tpcds: q23	65.800 GiB	1.250 GiB	66.061 GiB	1.863 GiB
23	presto/tpcds: q24	29.090 GiB	681.971 MiB	28.185 GiB	1.093 GiB
24	presto/tpcds: q25	7.391 GiB	919.610 MiB	4.706 GiB	616.535 MiB
25	presto/tpcds: q26	4.434 GiB	700.774 MiB	1.935 GiB	443.580 MiB
26	presto/tpcds: q27	10.359 GiB	1.531 GiB	6.027 GiB	744.165 MiB
27	presto/tpcds: q28	4.122 GiB	410.145 MiB	4.467 GiB	295.188 MiB
28	presto/tpcds: q29	7.289 GiB	602.740 MiB	6.675 GiB	563.430 MiB
29	presto/tpcds: q30	806.191 MiB	349.420 MiB	754.885 MiB	310.876 MiB
30	presto/tpcds: q31	10.323 GiB	1.971 GiB	10.971 GiB	1.045 GiB
31	presto/tpcds: q32	2.666 GiB	409.208 MiB	1.609 GiB	319.333 MiB
32	presto/tpcds: q33	6.486 GiB	614.255 MiB	4.207 GiB	776.051 MiB
33	presto/tpcds: q34	1.419 GiB	438.351 MiB	651.815 MiB	282.217 MiB
34	presto/tpcds: q35	1.979 GiB	307.558 MiB	1.770 GiB	228.734 MiB
35	presto/tpcds: q36	6.623 GiB	866.717 MiB	3.396 GiB	685.604 MiB
36	presto/tpcds: q37	1.415 GiB	122.236 MiB	1.322 GiB	9.706 MiB
37	presto/tpcds: q38	11.227 GiB	607.085 MiB	11.144 GiB	682.406 MiB
38	presto/tpcds: q39	5.248 GiB	73.420 MiB	5.252 GiB	80.789 MiB
39	presto/tpcds: q40	20.658 GiB	69.821 MiB	18.954 GiB	569.985 MiB
40	presto/tpcds: q41	642.925 KiB	1.022 MiB	216.561 KiB	0.987 KiB
41	presto/tpcds: q42	4.145 GiB	616.309 MiB	2.023 GiB	124.765 MiB
42	presto/tpcds: q43	4.616 GiB	374.687 MiB	3.826 GiB	582.756 MiB
43	presto/tpcds: q44	1.238 GiB	173.261 MiB	1.141 GiB	118.652 MiB
44	presto/tpcds: q45	2.271 GiB	316.080 MiB	2.453 GiB	754.269 MiB
45	presto/tpcds: q46	6.963 GiB	1.483 GiB	3.066 GiB	306.874 MiB
46	presto/tpcds: q47	34.154 GiB	440.304 MiB	34.636 GiB	864.852 MiB
47	presto/tpcds: q48	13.400 GiB	451.304 MiB	12.446 GiB	0.992 GiB
48	presto/tpcds: q49	7.656 GiB	525.136 MiB	5.565 GiB	529.636 MiB
49	presto/tpcds: q50	13.587 GiB	40.816 MiB	13.575 GiB	54.558 MiB
50	presto/tpcds: q51	20.496 GiB	1.656 GiB	18.132 GiB	1.204 GiB
51	presto/tpcds: q52	5.007 GiB	475.752 MiB	2.102 GiB	291.690 MiB
52	presto/tpcds: q53	4.779 GiB	660.115 MiB	2.375 GiB	277.752 MiB
53	presto/tpcds: q54	3.882 GiB	680.705 MiB	1.795 GiB	583.161 MiB
54	presto/tpcds: q55	3.900 GiB	748.500 MiB	2.121 GiB	568.033 MiB
55	presto/tpcds: q56	5.831 GiB	938.323 MiB	3.202 GiB	783.284 MiB
56	presto/tpcds: q57	29.849 GiB	718.504 MiB	28.758 GiB	1.004 GiB
57	presto/tpcds: q58	5.368 GiB	639.136 MiB	2.635 GiB	301.739 MiB
58	presto/tpcds: q59	26.177 GiB	591.808 MiB	26.068 GiB	1.331 GiB
59	presto/tpcds: q60	6.660 GiB	0.933 GiB	5.552 GiB	565.413 MiB
60	presto/tpcds: q61	12.321 GiB	735.165 MiB	8.646 GiB	898.155 MiB
61	presto/tpcds: q62	2.766 GiB	360.839 MiB	2.626 GiB	498.634 MiB
62	presto/tpcds: q63	4.324 GiB	752.133 MiB	2.354 GiB	397.469 MiB
63	presto/tpcds: q64	77.529 GiB	1.164 GiB	51.301 GiB	1.513 GiB
64	presto/tpcds: q65	32.960 GiB	412.845 MiB	33.025 GiB	632.085 MiB
65	presto/tpcds: q66	3.738 GiB	336.964 MiB	2.968 GiB	625.010 MiB
66	presto/tpcds: q67	108.318 GiB	210.917 MiB	108.290 GiB	196.328 MiB
67	presto/tpcds: q68	9.352 GiB	889.719 MiB	4.316 GiB	631.192 MiB
68	presto/tpcds: q69	1.007 GiB	77.956 MiB	806.781 MiB	125.361 MiB
69	presto/tpcds: q70	5.467 GiB	210.428 MiB	4.848 GiB	412.545 MiB
70	presto/tpcds: q71	4.885 GiB	438.302 MiB	1.388 GiB	470.158 MiB
71	presto/tpcds: q72	12.241 GiB	26.432 MiB	12.249 GiB	38.748 MiB
72	presto/tpcds: q73	2.555 GiB	1.154 GiB	606.681 MiB	166.637 MiB
73	presto/tpcds: q74	24.695 GiB	1.820 GiB	24.402 GiB	0.958 GiB
74	presto/tpcds: q75	27.379 GiB	859.872 MiB	25.593 GiB	1.299 GiB

query	Baseline parquet unpartitioned mean	Baseline parquet unpartitioned std.dev	Dynanic row filtering mean	Dynanic row filtering std.dev	
75	presto/tpcds: q76	3.833 GiB	292.308 MiB	3.962 GiB	313.611 MiB
76	presto/tpcds: q77	2.903 GiB	387.807 MiB	2.318 GiB	375.587 MiB
77	presto/tpcds: q78	98.992 GiB	0.976 GiB	96.492 GiB	4.245 GiB
78	presto/tpcds: q79	9.799 GiB	2.244 GiB	9.427 GiB	2.563 GiB
79	presto/tpcds: q80	66.164 GiB	1.011 GiB	49.387 GiB	1.892 GiB
80	presto/tpcds: q81	4.948 GiB	242.005 MiB	5.109 GiB	847.974 MiB
81	presto/tpcds: q82	2.795 GiB	218.162 MiB	1.315 GiB	9.882 MiB
82	presto/tpcds: q83	609.672 MiB	221.950 MiB	547.185 MiB	222.305 MiB
83	presto/tpcds: q84	263.847 MiB	215.905 MiB	298.648 MiB	137.882 MiB
84	presto/tpcds: q85	20.019 GiB	530.930 MiB	19.624 GiB	522.390 MiB
85	presto/tpcds: q86	5.361 GiB	0.932 GiB	5.085 GiB	553.161 MiB
86	presto/tpcds: q87	10.800 GiB	895.981 MiB	11.026 GiB	541.468 MiB
87	presto/tpcds: q88	0.927 GiB	86.680 MiB	371.234 MiB	74.939 MiB
88	presto/tpcds: q89	6.039 GiB	637.218 MiB	3.683 GiB	506.825 MiB
89	presto/tpcds: q90	214.673 MiB	106.395 MiB	97.705 MiB	27.898 MiB
90	presto/tpcds: q91	123.354 MiB	45.470 MiB	209.155 MiB	181.481 MiB
91	presto/tpcds: q92	2.511 GiB	867.223 MiB	1.952 GiB	265.219 MiB
92	presto/tpcds: q93	30.933 GiB	47.417 MiB	30.884 GiB	72.137 MiB
93	presto/tpcds: q94	6.119 GiB	659.136 MiB	3.845 GiB	376.675 MiB
94	presto/tpcds: q95	59.194 GiB	3.047 GiB	60.293 GiB	0.920 GiB
95	presto/tpcds: q96	1.010 GiB	293.669 MiB	86.874 MiB	52.218 MiB
96	presto/tpcds: q97	38.558 GiB	44.245 MiB	38.540 GiB	627.477 MiB
97	presto/tpcds: q98	5.068 GiB	421.712 MiB	2.546 GiB	417.518 MiB
98	presto/tpcds: q99	3.020 GiB	204.927 MiB	3.015 GiB	82.969 MiB

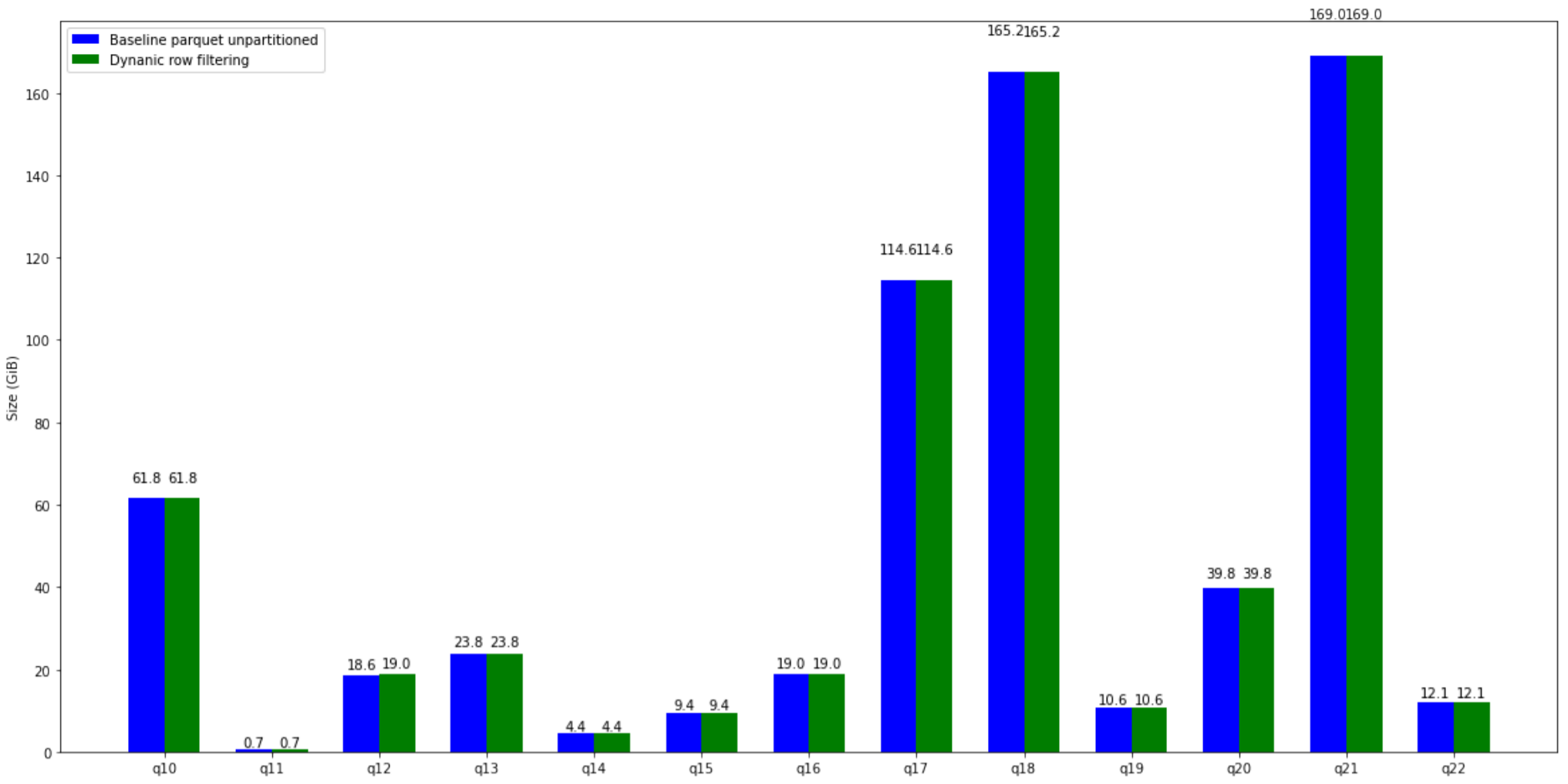
## TPC-H Comparison (physicalInputDataSize)

## TPC-DS Comparison (physicalInputDataSize)

## TPC-H Comparison (internalNetworkInputDataSize GB)

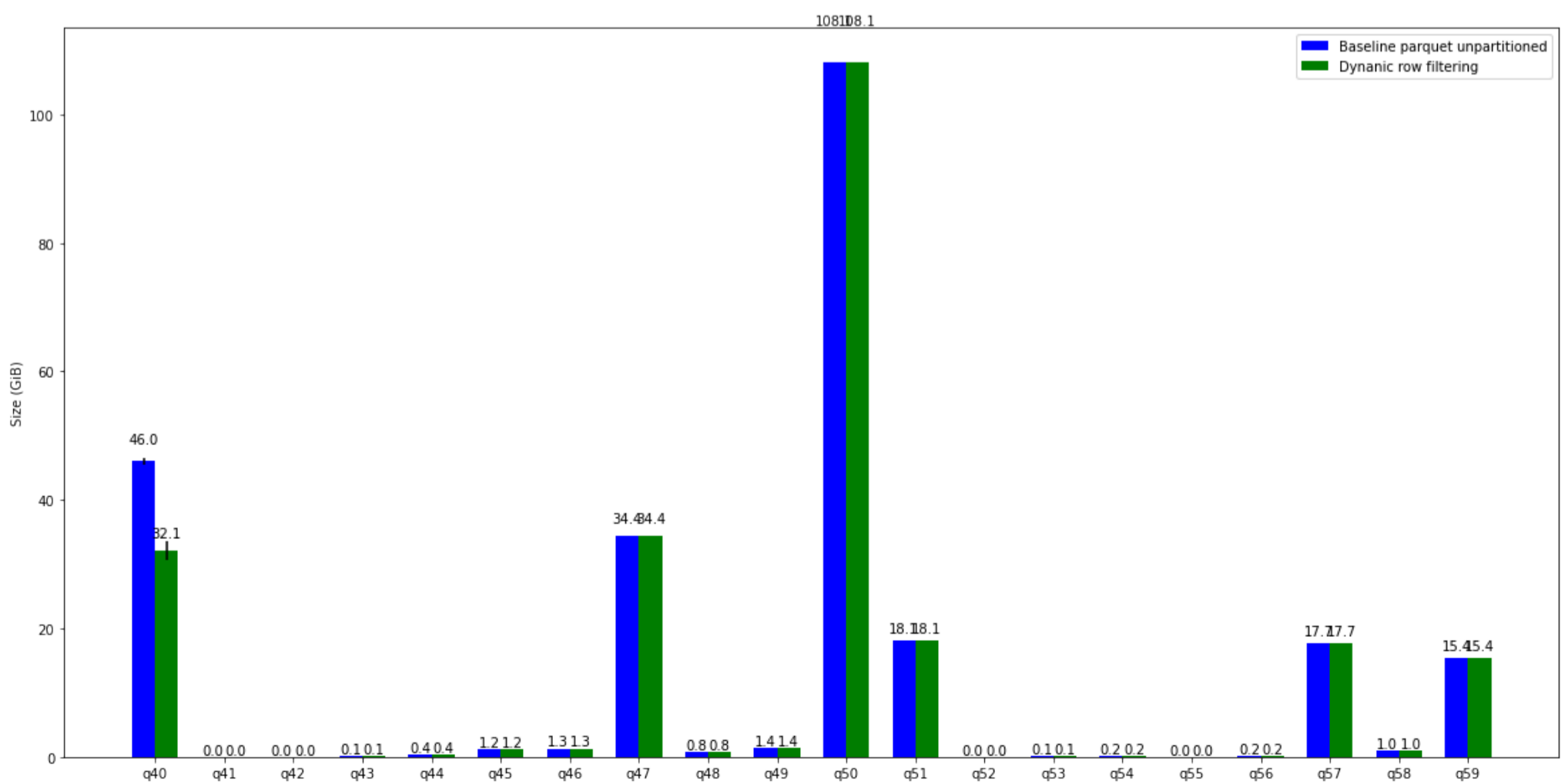
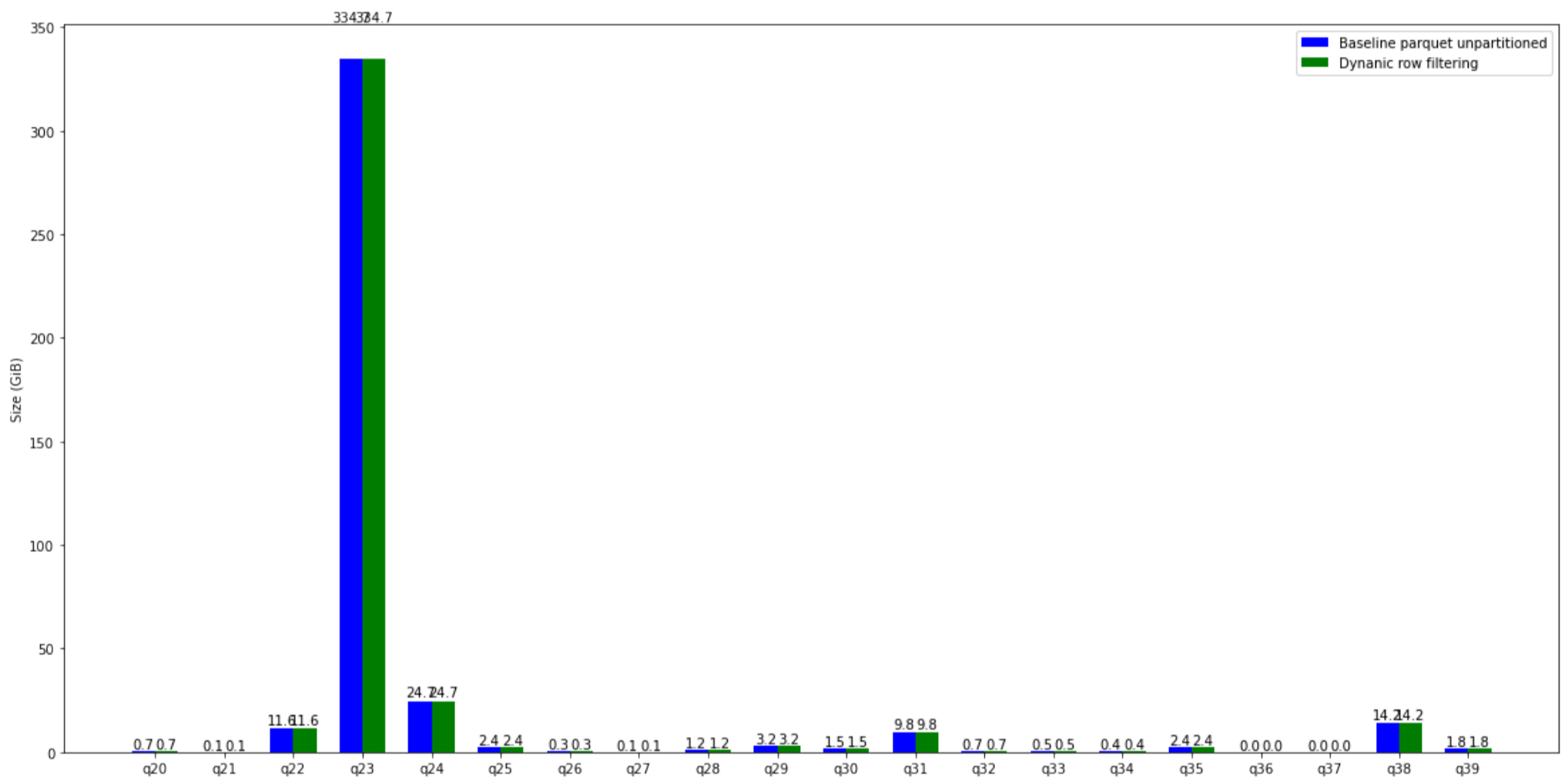
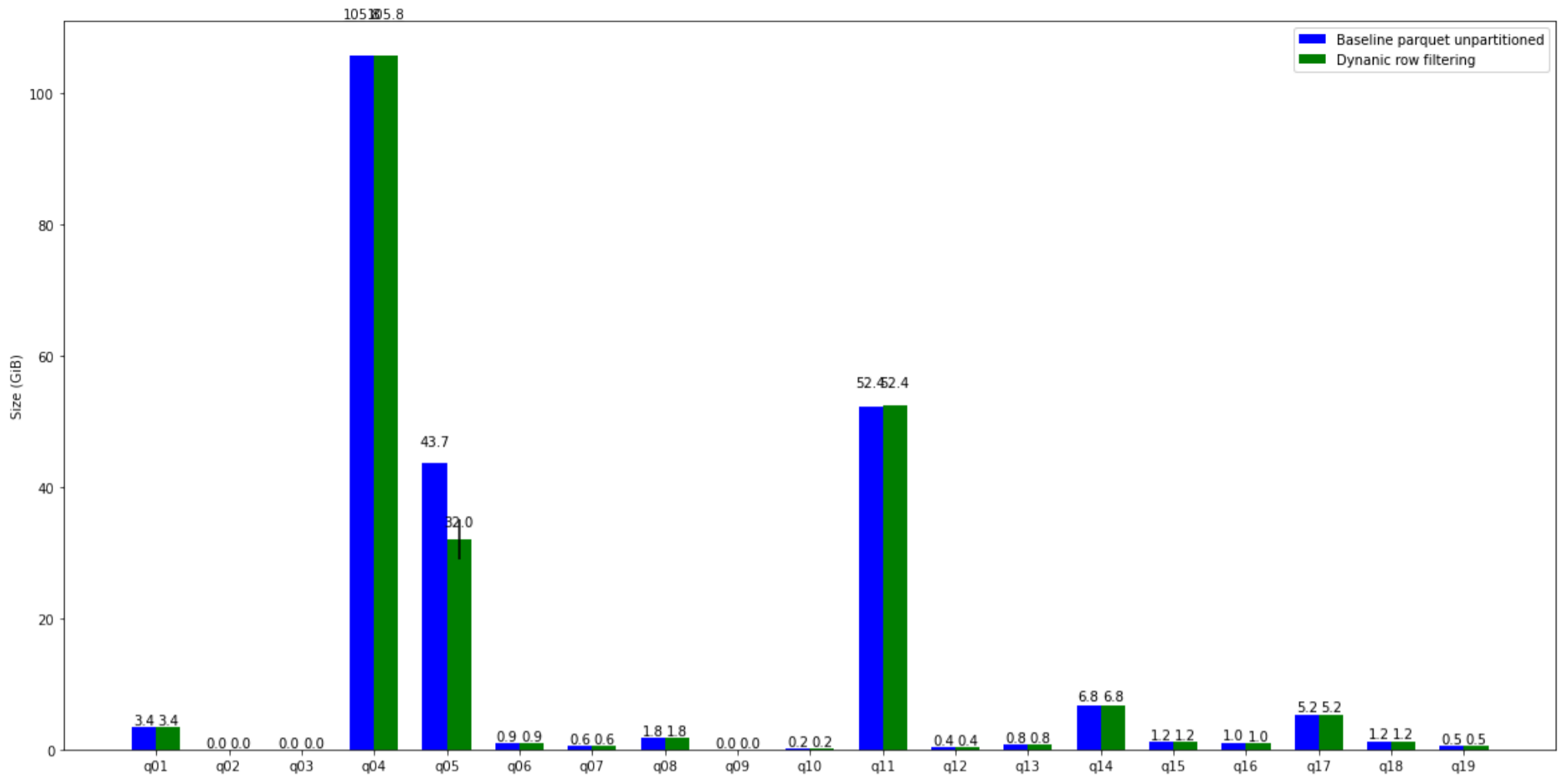


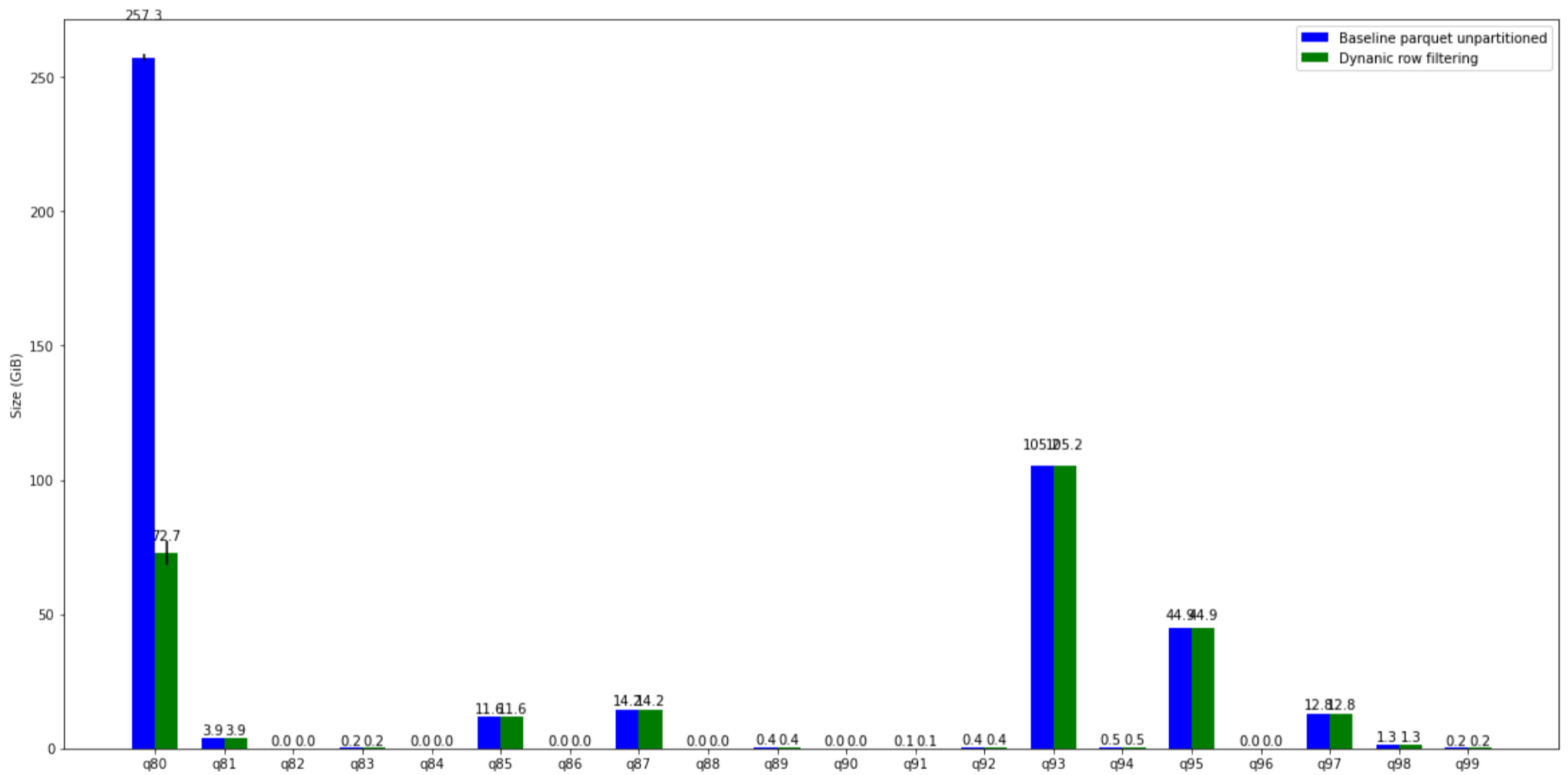
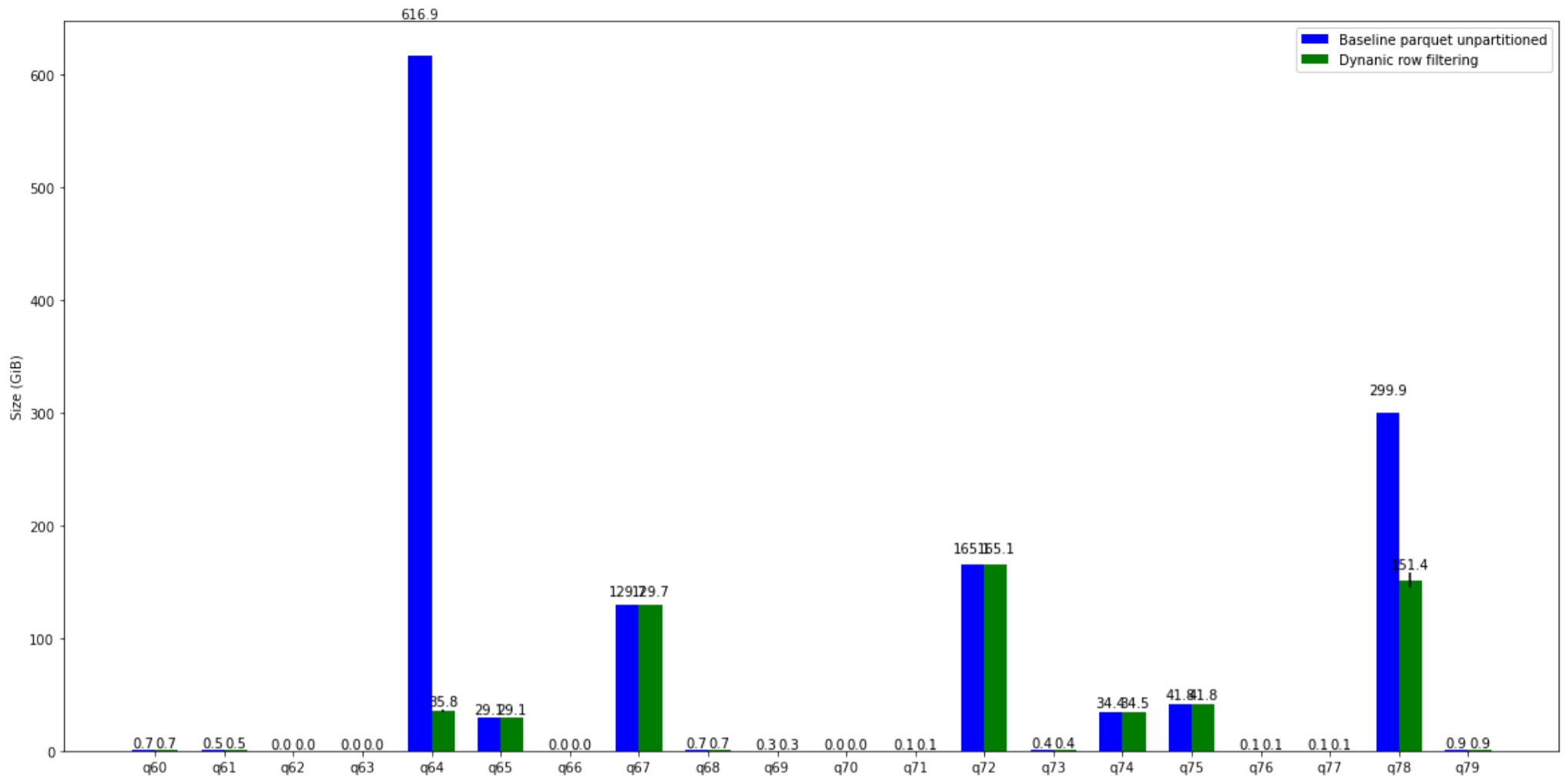




query	Baseline parquet unpartitioned mean	Baseline parquet unpartitioned std.dev	Dynamic row filtering mean	Dynamic row filtering std.dev
0 presto/tpch: q01	2.296 MiB	12.284 KiB	2.522 MiB	27.346 KiB
1 presto/tpch: q02	2.806 GiB	7.166 KiB	2.806 GiB	5.417 KiB
2 presto/tpch: q03	93.253 GiB	129.096 KiB	93.253 GiB	121.083 KiB
3 presto/tpch: q04	11.636 GiB	737.201 KiB	11.636 GiB	1.353 MiB
4 presto/tpch: q05	57.937 GiB	16.848 KiB	57.937 GiB	24.294 KiB
5 presto/tpch: q06	225.274 KiB	600.227 YiB	225.299 KiB	584.287 YiB
6 presto/tpch: q07	30.696 GiB	651.951 KiB	30.695 GiB	0.964 MiB
7 presto/tpch: q08	10.916 GiB	46.510 KiB	10.916 GiB	56.131 KiB
8 presto/tpch: q09	340.726 GiB	100.275 KiB	340.726 GiB	93.549 KiB
9 presto/tpch: q10	61.794 GiB	10.900 KiB	61.794 GiB	14.167 KiB
10 presto/tpch: q11	689.992 MiB	2.248 MiB	691.202 MiB	2.321 MiB
11 presto/tpch: q12	18.646 GiB	929.236 KiB	18.960 GiB	7.298 MiB
12 presto/tpch: q13	23.789 GiB	1.998 KiB	23.789 GiB	2.536 KiB
13 presto/tpch: q14	4.359 GiB	7.852 MiB	4.395 GiB	15.675 MiB
14 presto/tpch: q15	9.392 GiB	577.585 KiB	9.392 GiB	600.878 KiB
15 presto/tpch: q16	19.010 GiB	3.380 KiB	19.010 GiB	5.691 KiB
16 presto/tpch: q17	114.602 GiB	54.226 KiB	114.602 GiB	85.817 KiB
17 presto/tpch: q18	165.220 GiB	62.723 KiB	165.186 GiB	154.412 KiB
18 presto/tpch: q19	10.596 GiB	28.172 KiB	10.595 GiB	27.267 KiB
19 presto/tpch: q20	39.810 GiB	35.030 KiB	39.810 GiB	56.508 KiB
20 presto/tpch: q21	169.015 GiB	1.947 MiB	169.009 GiB	3.481 MiB
21 presto/tpch: q22	12.082 GiB	54.794 KiB	12.082 GiB	107.237 KiB

## TPC-DS Comparison (internalNetworkInputDataSize GB)





query	Baseline parquet unpartitioned mean	Baseline parquet unpartitioned std.dev	Dynamic row filtering mean	Dynamic row filtering std.dev
0 presto/tpcds: q01	3.364 GiB	322.272 KiB	3.364 GiB	225.120 KiB
1 presto/tpcds: q02	45.528 MiB	2.948 KiB	46.068 MiB	6.667 KiB
2 presto/tpcds: q03	19.534 MiB	2.733 KiB	19.533 MiB	1.701 KiB
3 presto/tpcds: q04	105.754 GiB	2.569 MiB	105.792 GiB	1.927 MiB
4 presto/tpcds: q05	43.685 GiB	682.161 KiB	32.008 GiB	3.009 GiB
5 presto/tpcds: q06	929.580 MiB	10.884 KiB	929.635 MiB	48.066 KiB
6 presto/tpcds: q07	586.566 MiB	5.523 KiB	586.803 MiB	7.919 KiB
7 presto/tpcds: q08	1.767 GiB	71.188 KiB	1.769 GiB	263.365 KiB
8 presto/tpcds: q09	2.023 MiB	588.155 YiB	2.023 MiB	534.635 YiB
9 presto/tpcds: q10	159.254 MiB	1.674 MiB	159.451 MiB	1.981 MiB
10 presto/tpcds: q11	52.357 GiB	1.135 MiB	52.379 GiB	1.598 MiB
11 presto/tpcds: q12	427.329 MiB	30.360 KiB	429.561 MiB	325.984 KiB
12 presto/tpcds: q13	791.718 MiB	0	791.718 MiB	0
13 presto/tpcds: q14	6.754 GiB	331.525 KiB	6.754 GiB	331.932 KiB
14 presto/tpcds: q15	1.208 GiB	8.698 KiB	1.208 GiB	14.528 KiB
15 presto/tpcds: q16	1.030 GiB	36.310 KiB	0.968 GiB	377.322 KiB
16 presto/tpcds: q17	5.236 GiB	147.345 KiB	5.235 GiB	505.144 KiB
17 presto/tpcds: q18	1.233 GiB	59.387 KiB	1.233 GiB	56.688 KiB

	query	Baseline parquet unpartitioned mean	Baseline parquet unpartitioned std.dev	Dynanic row filtering mean	Dynanic row filtering std.dev
18	presto/tpcds: q19	531.744 MiB	515.212 KiB	533.590 MiB	690.852 KiB
19	presto/tpcds: q20	672.024 MiB	3.360 MiB	691.604 MiB	3.641 MiB
20	presto/tpcds: q21	88.105 MiB	0	88.105 MiB	0
21	presto/tpcds: q22	11.584 GiB	0	11.584 GiB	0
22	presto/tpcds: q23	334.701 GiB	390.573 KiB	334.702 GiB	600.303 KiB
23	presto/tpcds: q24	24.673 GiB	4.847 MiB	24.688 GiB	304.651 KiB
24	presto/tpcds: q25	2.409 GiB	91.766 KiB	2.407 GiB	97.509 KiB
25	presto/tpcds: q26	339.311 MiB	3.888 KiB	339.495 MiB	3.429 KiB
26	presto/tpcds: q27	87.022 MiB	107.362 KiB	86.756 MiB	412.460 KiB
27	presto/tpcds: q28	1.195 GiB	112.536 KiB	1.195 GiB	130.951 KiB
28	presto/tpcds: q29	3.196 GiB	138.698 KiB	3.196 GiB	730.788 KiB
29	presto/tpcds: q30	1.526 GiB	18.412 KiB	1.526 GiB	23.955 KiB
30	presto/tpcds: q31	9.805 GiB	6.638 MiB	9.837 GiB	3.138 MiB
31	presto/tpcds: q32	763.922 MiB	6.826 MiB	761.103 MiB	6.866 MiB
32	presto/tpcds: q33	525.764 MiB	43.770 KiB	525.523 MiB	18.756 KiB
33	presto/tpcds: q34	435.874 MiB	2.492 KiB	445.451 MiB	6.738 KiB
34	presto/tpcds: q35	2.432 GiB	828.299 KiB	2.432 GiB	2.132 MiB
35	presto/tpcds: q36	49.907 MiB	5.716 KiB	49.904 MiB	536.327 YiB
36	presto/tpcds: q37	1.361 MiB	929.904 YiB	1.360 MiB	1.392 KiB
37	presto/tpcds: q38	14.184 GiB	63.018 KiB	14.184 GiB	72.050 KiB
38	presto/tpcds: q39	1.844 GiB	336.892 KiB	1.844 GiB	216.897 KiB
39	presto/tpcds: q40	46.025 GiB	542.668 MiB	32.120 GiB	1.418 GiB
40	presto/tpcds: q41	46.100 KiB	0	46.100 KiB	0
41	presto/tpcds: q42	1.598 MiB	768.967 YiB	1.598 MiB	1.641 KiB
42	presto/tpcds: q43	100.773 MiB	2.850 KiB	100.787 MiB	17.763 KiB
43	presto/tpcds: q44	438.476 MiB	27.561 KiB	438.514 MiB	50.412 KiB
44	presto/tpcds: q45	1.211 GiB	4.952 KiB	1.211 GiB	1.261 KiB
45	presto/tpcds: q46	1.276 GiB	67.983 KiB	1.289 GiB	840.252 KiB
46	presto/tpcds: q47	34.372 GiB	37.523 KiB	34.373 GiB	70.202 KiB
47	presto/tpcds: q48	790.586 MiB	0	790.586 MiB	0
48	presto/tpcds: q49	1.441 GiB	27.485 KiB	1.441 GiB	29.135 KiB
49	presto/tpcds: q50	108.068 GiB	12.146 KiB	108.067 GiB	6.273 KiB
50	presto/tpcds: q51	18.094 GiB	405.554 KiB	18.094 GiB	701.893 KiB
51	presto/tpcds: q52	26.753 MiB	4.076 KiB	26.753 MiB	2.825 KiB
52	presto/tpcds: q53	75.090 MiB	2.156 KiB	75.089 MiB	2.447 KiB
53	presto/tpcds: q54	210.492 MiB	40.655 MiB	181.342 MiB	25.882 MiB
54	presto/tpcds: q55	19.030 MiB	580.529 YiB	19.031 MiB	474.107 YiB
55	presto/tpcds: q56	245.522 MiB	352.190 KiB	244.840 MiB	494.958 KiB
56	presto/tpcds: q57	17.684 GiB	22.797 KiB	17.684 GiB	34.318 KiB
57	presto/tpcds: q58	1.030 GiB	16.997 MiB	1.016 GiB	7.535 MiB
58	presto/tpcds: q59	15.397 GiB	80.563 KiB	15.397 GiB	103.640 KiB
59	presto/tpcds: q60	667.885 MiB	53.414 KiB	667.950 MiB	48.296 KiB
60	presto/tpcds: q61	511.694 MiB	22.979 KiB	470.375 MiB	1.737 MiB
61	presto/tpcds: q62	41.659 MiB	5.660 KiB	41.661 MiB	3.280 KiB
62	presto/tpcds: q63	28.381 MiB	1.165 KiB	28.381 MiB	1.921 KiB
63	presto/tpcds: q64	616.858 GiB	10.303 MiB	35.815 GiB	0.962 GiB
64	presto/tpcds: q65	29.136 GiB	561.852 KiB	29.136 GiB	533.658 KiB
65	presto/tpcds: q66	29.794 MiB	105.150 KiB	29.765 MiB	134.461 KiB
66	presto/tpcds: q67	129.665 GiB	692.141 KiB	129.666 GiB	535.941 KiB
67	presto/tpcds: q68	698.574 MiB	1.064 MiB	709.185 MiB	2.587 MiB
68	presto/tpcds: q69	280.913 MiB	529.581 KiB	284.741 MiB	2.095 MiB
69	presto/tpcds: q70	4.495 MiB	26.083 KiB	4.548 MiB	32.909 KiB
70	presto/tpcds: q71	69.820 MiB	7.878 KiB	69.605 MiB	18.085 KiB
71	presto/tpcds: q72	165.086 GiB	18.349 KiB	165.086 GiB	27.419 KiB
72	presto/tpcds: q73	431.599 MiB	4.050 KiB	441.160 MiB	3.807 KiB
73	presto/tpcds: q74	34.449 GiB	7.619 MiB	34.459 GiB	1.576 MiB
74	presto/tpcds: q75	41.782 GiB	189.892 KiB	41.782 GiB	127.322 KiB

	query	Baseline parquet unpartitioned mean	Baseline parquet unpartitioned std.dev	Dynanic row filtering mean	Dynanic row filtering std.dev
75	presto/tpcds: q76	117.425 MiB	241.620 KiB	117.026 MiB	182.993 KiB
76	presto/tpcds: q77	54.030 MiB	51.928 KiB	54.080 MiB	81.768 KiB
77	presto/tpcds: q78	299.870 GiB	1.330 MiB	151.395 GiB	6.641 GiB
78	presto/tpcds: q79	874.391 MiB	0.924 KiB	874.391 MiB	3.603 KiB
79	presto/tpcds: q80	257.257 GiB	1.214 GiB	72.678 GiB	4.410 GiB
80	presto/tpcds: q81	3.874 GiB	8.703 KiB	3.874 GiB	7.383 KiB
81	presto/tpcds: q82	6.813 MiB	11.405 KiB	6.816 MiB	13.636 KiB
82	presto/tpcds: q83	184.078 MiB	332.633 KiB	183.836 MiB	293.290 KiB
83	presto/tpcds: q84	21.144 MiB	27.846 YiB	21.084 MiB	62.629 YiB
84	presto/tpcds: q85	11.641 GiB	20.267 KiB	11.643 GiB	33.913 KiB
85	presto/tpcds: q86	43.390 MiB	2.367 KiB	43.389 MiB	4.555 KiB
86	presto/tpcds: q87	14.184 GiB	56.837 KiB	14.184 GiB	85.494 KiB
87	presto/tpcds: q88	2.828 MiB	0	2.828 MiB	0
88	presto/tpcds: q89	397.673 MiB	0.929 KiB	397.690 MiB	27.510 KiB
89	presto/tpcds: q90	1.100 MiB	0	1.100 MiB	0
90	presto/tpcds: q91	98.374 MiB	6.074 KiB	98.368 MiB	11.407 KiB
91	presto/tpcds: q92	389.543 MiB	2.002 MiB	389.627 MiB	695.653 KiB
92	presto/tpcds: q93	105.183 GiB	6.912 KiB	105.183 GiB	8.472 KiB
93	presto/tpcds: q94	539.585 MiB	2.406 KiB	486.165 MiB	2.355 MiB
94	presto/tpcds: q95	44.853 GiB	33.510 KiB	44.853 GiB	26.907 KiB
95	presto/tpcds: q96	282.708 KiB	0	282.708 KiB	0
96	presto/tpcds: q97	12.807 GiB	577.489 KiB	12.807 GiB	566.659 KiB
97	presto/tpcds: q98	1.323 GiB	704.885 KiB	1.336 GiB	702.855 KiB
98	presto/tpcds: q99	190.620 MiB	8.314 KiB	190.620 MiB	2.878 KiB

## TPC-H Comparison (planning time seconds)

## TPC-DS Comparison (planning time seconds)