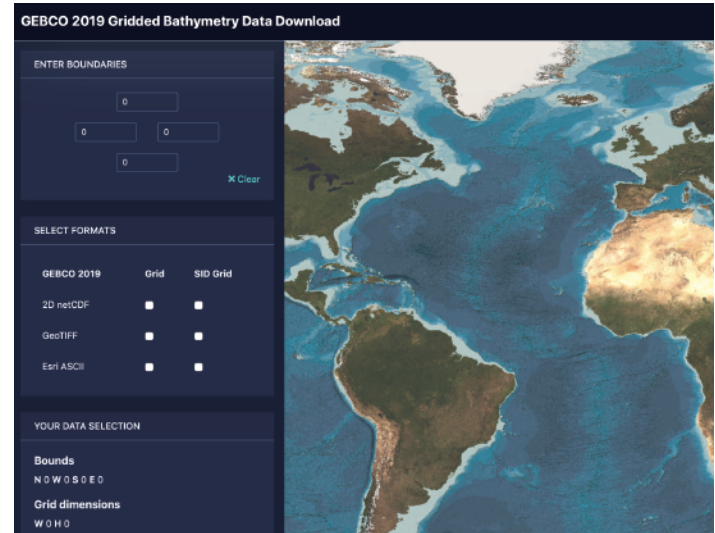


GEBCO Global Bathymetry Data

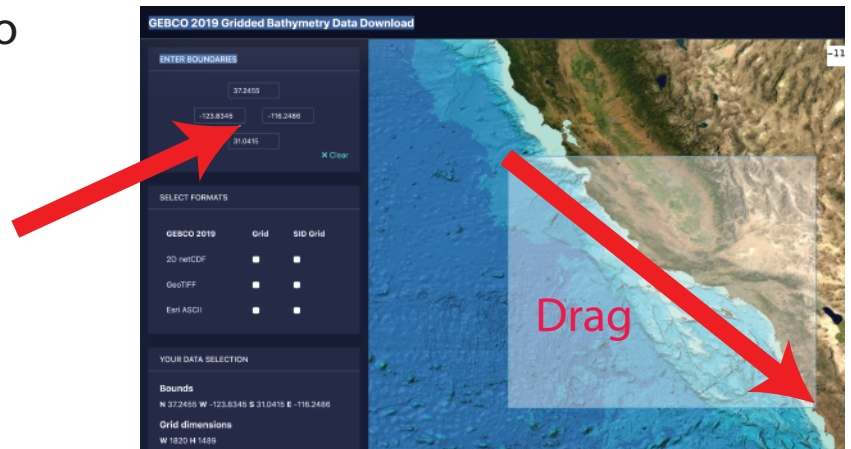
1) Go to this website:

<https://download.gebco.net>

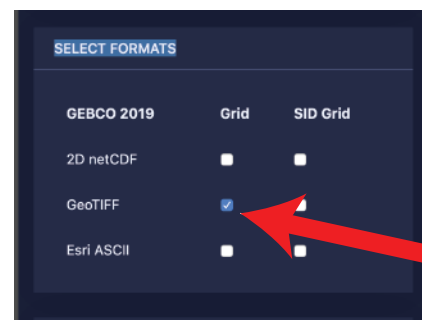
2) You should see a map similar to this:



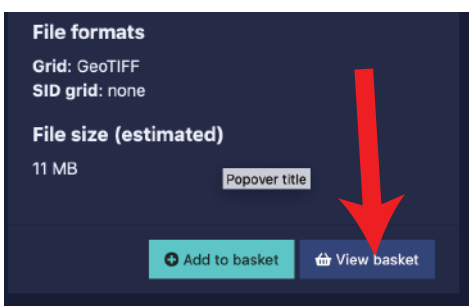
3) CTRL-click (CMD click on Mac) to drag a box to select the area. If this doesn't work, try another browser, or enter the extent manually in the boundaries pane.



4) For Format, select Grid/GeoTIFF.



5) Click "Add to Basket" and then "View Basket"



6) Click Download

