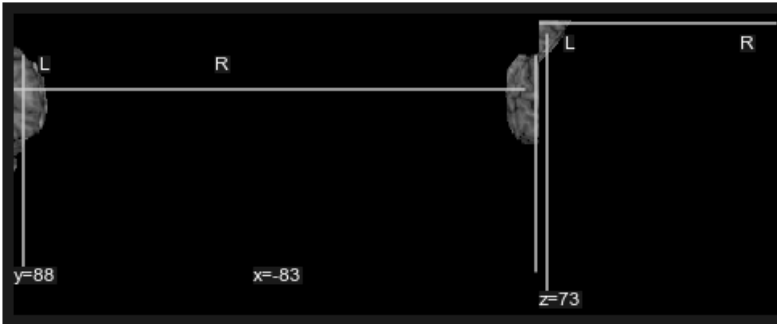
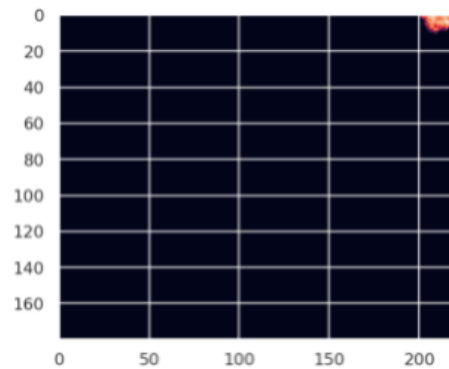


```
plotting.plot_anat('toMNI_image_FCP.nii.gz')
```

```
<nilearn.plotting.displays.OrthoSlicer at 0x264ca9963c8>
```



```
size_r, size_a, size_s = processed.mri.numpy().squeeze().shape  
slice = processed.mri.numpy().squeeze()[:, :, 100]  
plt.imshow(slice)  
plt.show()
```



FCP skull stripped image details before transformation:

```
ScalarImage(shape: (1, 256, 256, 124); spacing: (1.00, 1.00, 1.20);  
orientation: LAS+; memory: 15.5 MiB; dtype: torch.ShortTensor)
```

IXI no-skull stripped image details before transformation:

```
ScalarImage(shape: (1, 256, 256, 150); spacing: (0.94, 0.94, 1.20);  
orientation: PSR+; memory: 18.8 MiB; dtype: torch.ShortTensor)
```

After transformation:

```
ScalarImage(shape: (1, 181, 217, 181); spacing: (1.00, 1.00, 1.00);  
orientation: RAS+; memory: 13.6 MiB; dtype: torch.ShortTensor)
```

---