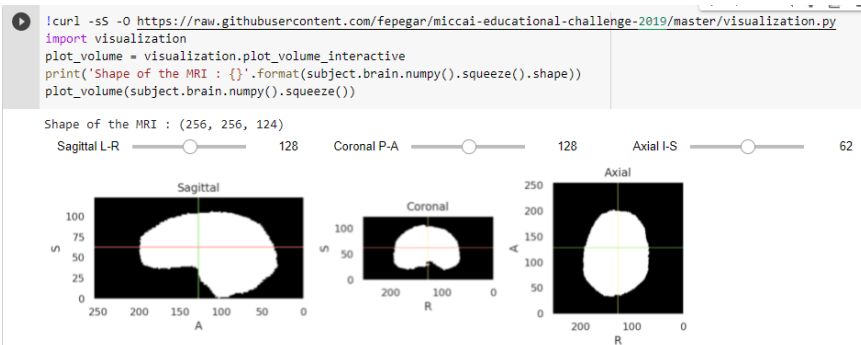
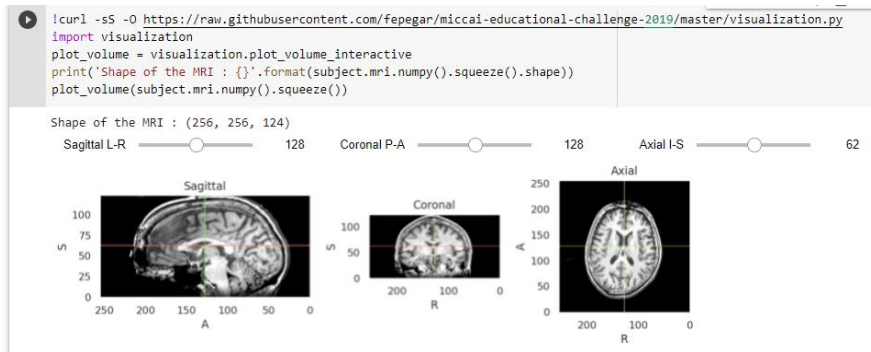


MRI & BRAIN images before transformation:



Transformation pipeline:

```
mni = tio.datasets.Colin27()
#try transformations together
transforms = [
    tio.ToCanonical(),
    tio.Resample(1),
    tio.Resample(
        mni.ti.path, # to MNI space (which is RAS+)
        tio.RandomAnisotropy(p=0.25), # make images look anisotropic 25% of times
        #tio.CropOrPad((188, 220, 170))
    )
]

transform = tio.Compose(transforms)
processed = transform(subject)
```

After transformation, visualization for brain images (same result with mri images):

