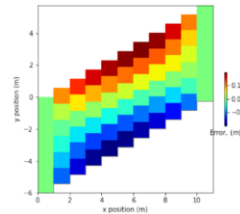
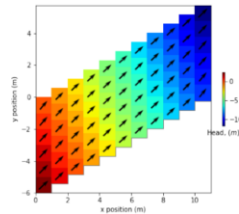


results before patch

Simulation results for scenario 2, which features:

1. cross-connections (staggered)
2. standard conduction formulation (x3d off)

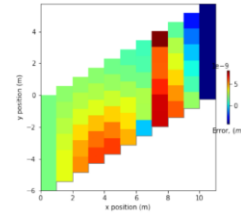
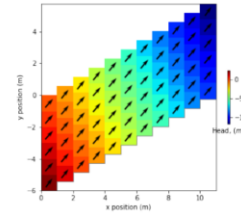
```
simulation (2)
WARNING: Unable to resolve dimension of ('gwf6', 'disu', 'cell2d', 'cell12d', 'icvert') based on shape "ncvert"
SPECIFIC DISCHARGE:
-----
magnitude      angle
analytical 1.0000000000000000 30.0000000000000000
mid-channel 0.61670614671835 43.13981673092950
avg 0.63791703538675 44.37500323869955
min 0.6111309955780 42.3149900874938
max 0.7320202112799 51.14078896947697
```



Simulation results for scenario 3, which features:

1. cross-connections (staggered)
2. x3d

```
simulation(3)
WARNING: Unable to resolve dimension of ('gwf6', 'disu', 'cell2d', 'cell12d', 'icvert') based on shape "ncvert"
SPECIFIC DISCHARGE:
-----
magnitude      angle
analytical 1.0000000000000000 30.0000000000000000
mid-channel 0.66143782836248 49.10600539096681
avg 0.65624511207882 49.6563287243581
min 0.6196568365589 49.10660517641438
max 0.66143782985963 53.79397700419134
```

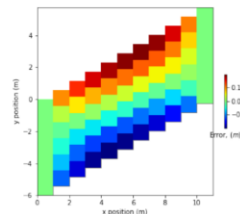
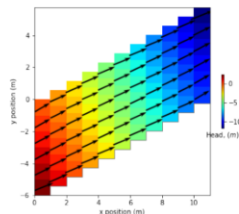


results before patch but with fix programmed into the jupyter notebook

Simulation results for scenario 2, which features:

1. cross-connections (staggered)
2. standard conduction formulation (x3d off)

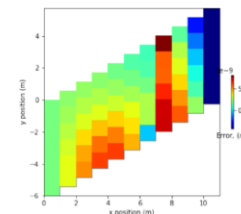
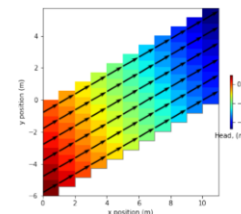
```
simulation (2)
WARNING: Unable to resolve dimension of ('gwf6', 'disu', 'cell2d', 'cell12d', 'icvert') based on shape "ncvert"
SPECIFIC DISCHARGE:
-----
magnitude      angle
analytical 1.0000000000000000 30.0000000000000000
mid-channel 1.02264804588361 24.39868606682424
avg 1.06189337858883 24.91810798070954
min 0.97648357246278 21.56672056853805
max 1.36023166685126 30.00269970309571
```



Simulation results for scenario 3, which features:

1. cross-connections (staggered)
2. x3d

```
simulation(3)
WARNING: Unable to resolve dimension of ('gwf6', 'disu', 'cell2d', 'cell12d', 'icvert') based on shape "ncvert"
SPECIFIC DISCHARGE:
-----
magnitude      angle
analytical 1.0000000000000000 30.0000000000000000
mid-channel 1.0000000018347 30.00000004680312
avg 1.0000000066281 30.0000000595226
min 0.99999999678148 29.99999961820053
max 1.00000000677581 30.00000010647039
```

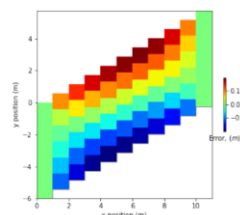
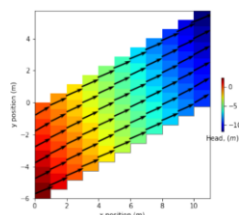


results after patch

Simulation results for scenario 2, which features:

1. cross-connections (staggered)
2. standard conduction formulation (x3d off)

```
simulation (2)
WARNING: Unable to resolve dimension of ('gwf6', 'disu', 'cell2d', 'cell12d', 'icvert') based on shape "ncvert".
SPECIFIC DISCHARGE:
-----
magnitude      angle
analytical 1.0000000000000000 30.0000000000000000
mid-channel 1.02264804642128 24.39868605316031
avg 1.06189337852986 24.9181079812053
min 0.97648357289155 21.56672053098342
max 1.36023166910693 30.0026998679646
```



Simulation results for scenario 3, which features:

1. cross-connections (staggered)
2. x3d

```
simulation(3)
WARNING: Unable to resolve dimension of ('gwf6', 'disu', 'cell2d', 'cell12d', 'icvert') based on shape "ncvert"
SPECIFIC DISCHARGE:
-----
magnitude      angle
analytical 1.0000000000000000 30.0000000000000000
mid-channel 1.0000000037613 30.00000004043002
avg 1.0000000063506 30.000000067006
min 0.9999999820624 29.9999997376404
max 1.0000000463096 30.000000810090
```

