



RAZER BLADE INTEL ME FIRMWARE
UPDATER

VERSION 1.1.10

BEFORE YOU START THE INSTALLATION PROCESS:

1. Please ensure you have installed all the latest Microsoft® Windows Operating Systems and Security Updates.

For help verifying your OS is up to date please refer to the following article from Microsoft.

<https://support.microsoft.com/en-us/help/4027667/windows-update-windows-10>

2. Ensure that your Blade is plugged into a wall outlet and not running on battery alone before proceeding.
3. Please save any open documents on your computer and close all other programs before attempting this update.
4. Please proceed with the updating process below.

RAZER BLADE INTEL ME FIRMWARE UPDATER

This document is a step by step process on how to update the firmware of your Razer Blade. First you must download the updater for your model as found below. Your model number can be found at the bottom of your Blade Laptop.

For Model Numbers with prefixes:

RZ09-02385	Razer Blade 15" (2018) - Advanced
RZ09-02386	Razer Blade 15" (2018) - Advanced
RZ09-02886	Razer Blade 15" (2019) - Advanced
RZ09-02887	Razer Blade 15" (2019) - Advanced
RZ09-02888	Razer Blade 15" (2019) - Advanced
RZ09-02705	Razer Blade 15" (2018) - Base Model
RZ09-02810	Razer Blade Stealth 13 (2019)
RZ09-02812	Razer Blade Stealth 13 (2019)

Download the firmware updater here <http://rzt.to/HXakt>

For Model Numbers with the prefixes:

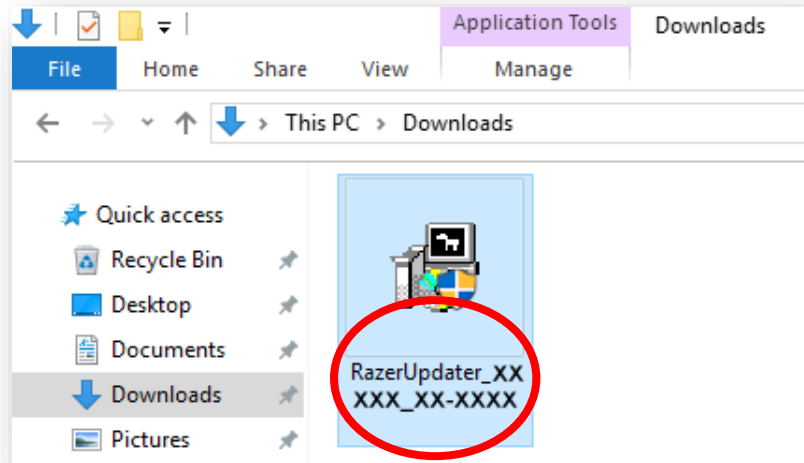
RZ09-01952	Razer Blade 14" (2016) - Intel 6700HQ - GTX1060
RZ09-01953	Razer Blade 14" (2017) - Intel 7700HQ - GTX1060
RZ09-01682	Razer Blade Stealth 12.5" (2016) - Intel 6500U
RZ09-01962	Razer Blade Stealth 12.5" (2016) - Intel 7500U
RZ09-01963	Razer Blade Stealth 13" (2017) - Intel 7500U
RZ09-01964	Razer Blade Stealth 13" (2017) - Intel 7500U
RZ09-02393	Razer Blade Stealth 13" (2017) Intel 8550U
RZ09-02394	Razer Blade Stealth 13" (2017) Intel 8550U
RZ09-01662	Razer Blade Pro 17" (2016)
RZ09-01663	Razer Blade Pro 17" (2017)
RZ09-02202	Razer Blade Pro 17" (2017) – Full HD – GTX 1060

Important note: a minimum BIOS version is required for these models before proceeding. Please ensure you have installed all previous security and BIOS updates before proceeding with this update. Required BIOS updates can be found by visiting, <http://rzt.to/TYfLi>.

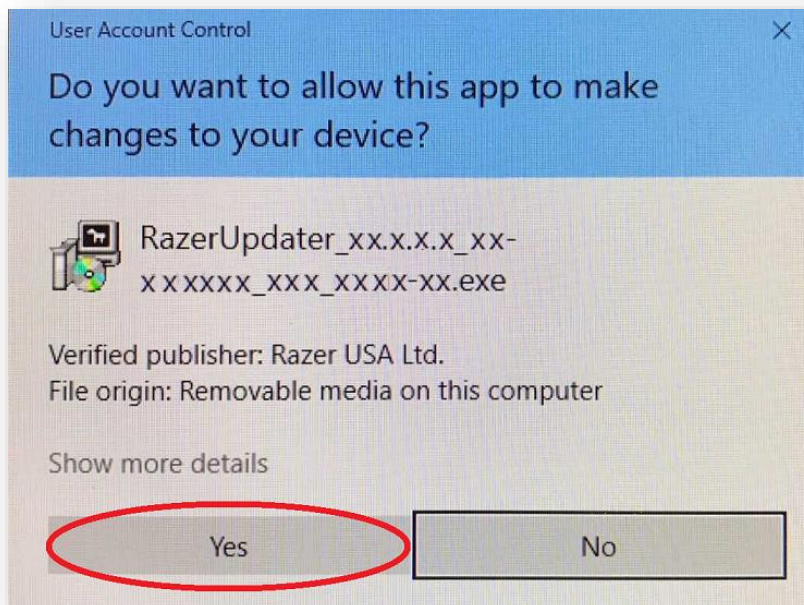
Download the firmware updater here <http://rzt.to/CLjkP>

INSTALLATION PROCESS

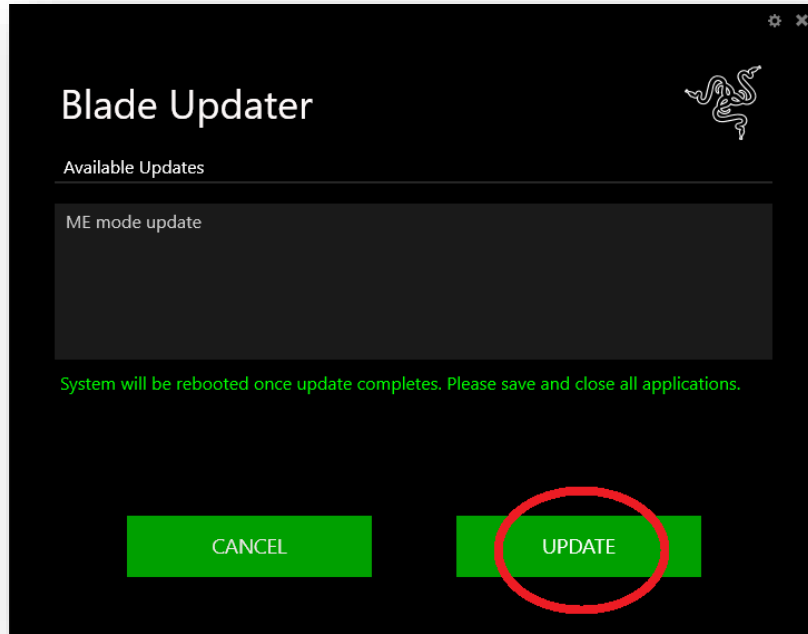
1. Click on the firmware file located in your chosen download location. (i.e. the Downloads folder)



2. You will be prompted by a User Account Control (UAC) pop up to confirm the changes to your system. Click on "Yes" to confirm and proceed with the updater.



3. Next, you will see the install window as below. Click on "Update" to begin the installation process. Please note, you will lose control of your keyboard and mouse during the updating process. You will also not be able to proceed if you already have the latest firmware installed on your Blade.



4. The updater will show a progress bar as the update is installed.
5. Once the update is installed your computer will automatically restart.
6. This completes the installation process.