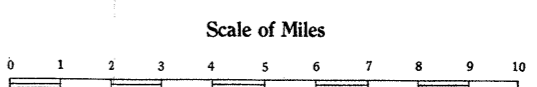


OFFICIAL ROAD MAP
OF THE STATE OF

DELAWARE

BRIDGE DIVISION OF

State Highway Department
Dover, Delaware
RETURN TO: A. G. LIVINGSTON, BRIDGE ENGR.
MAY 1937



LEGEND

- Main Routes
- Main Routes under Construction
- Paved Highways
- Gravel, Slag or Stone
- Dirt
- Improved Highways in Other States
- U. S. Highway Numbers
- State Highway Numbers

Wider lines indicate Main Through Routes

Type indicates approximate population thus:

over 100,000	Wilmington
10,000 to 100,000	Chester
2,500 to 10,000	New Castle
1,000 to 2,500	Smyrna
500 to 1,000	Clayton
Less than 500	Farmington
Other Places	Dubin Hill

DAMS-SPILLWAYS-FLUMES RACEWAYS-ETC. ON STATE HWAY SYSTEM

If you drive don't drink if you drink don't drive
The Safe Driver is the Careful Driver
Don't dream while driving
Be as courteous on the road as you would be in your own home

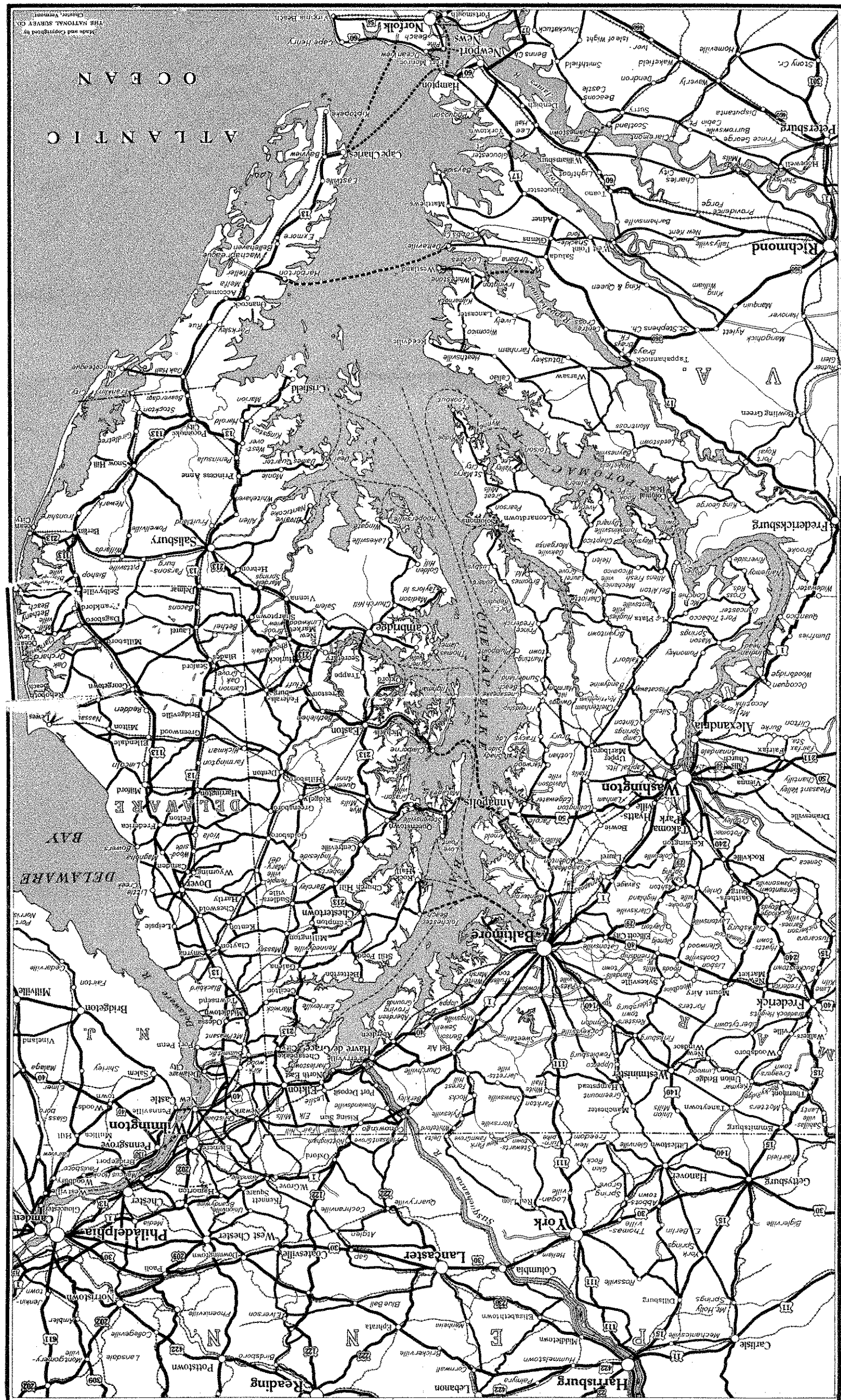
SEE TABULATION
DAMS-SPILLWAYS-FLUMES
5/2-1937-5/26
5/25-1937-7/6

DAMS - SPILLWAYS - FLUMES
TRAP AND
KIMMERS FORD

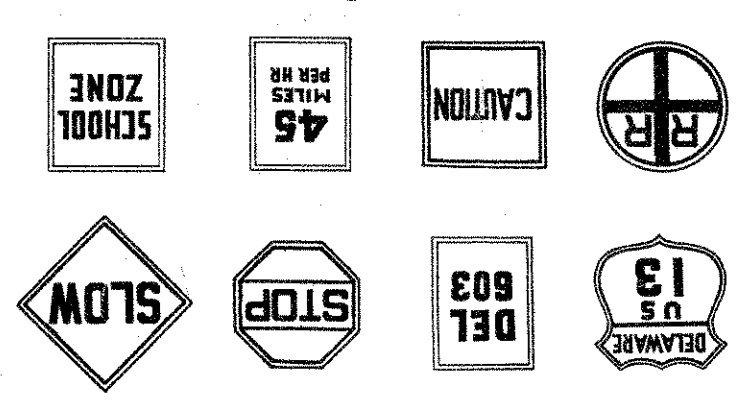
ATLANTIC
A. G. Livingston
MAY 28 1937
OCEAN

GRAINS
REAR
BATHING

MADE AND Copyrighted by
THE NATIONAL SURVEY CO.
Chester, Vermont



For Free Distribution Only
 STATE HIGHWAY DEPARTMENT
 DEPARTMENT OF TRANSPORTATION
 111 MARKET STREET
 WILMINGTON, DELAWARE



1936
 SLIPSTICKS
ROAD MAP
Official
DELAWARE
 THE STATE OF

- ROAD SIGNS AND MARKERS
1. Exceeding the Speed Limit
 2. On Wrong Side of Road
 3. Reckless Driving
 4. Driving off Roadway
 5. Failing to Signal
 6. Disregarding Stop Signs
 7. Parking on Highway
 8. Passing on Curve or Hill

These are the main reasons for Automobile Accidents resulting in Persons Killed or Injured:

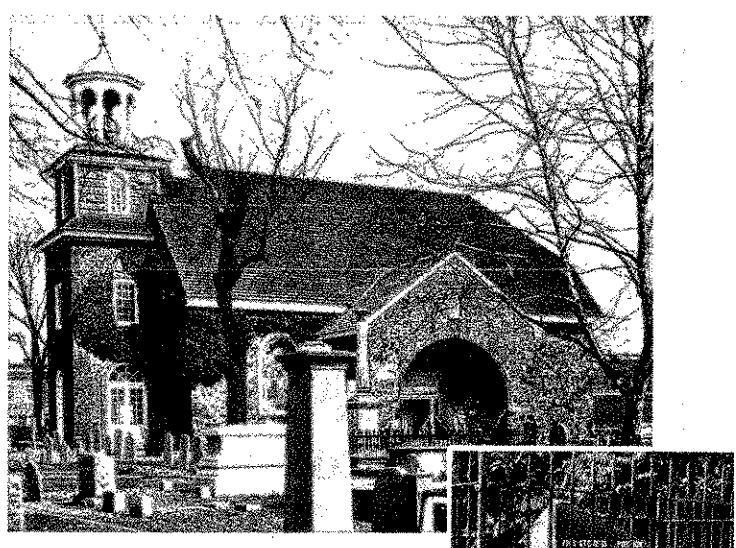


Motorists requiring Police Service should report to nearest State Highway Police Station

- Station No. 1 Penny Hill Phone Holly Oak 34
- Station No. 2 State Road Phone Wilmington 4041
- Station No. 3 Dover Phone Dover 34
- Station No. 4 Georgetown Phone Georgetown 34
- Station No. 5 Bridgeville Phone Bridgeville 34

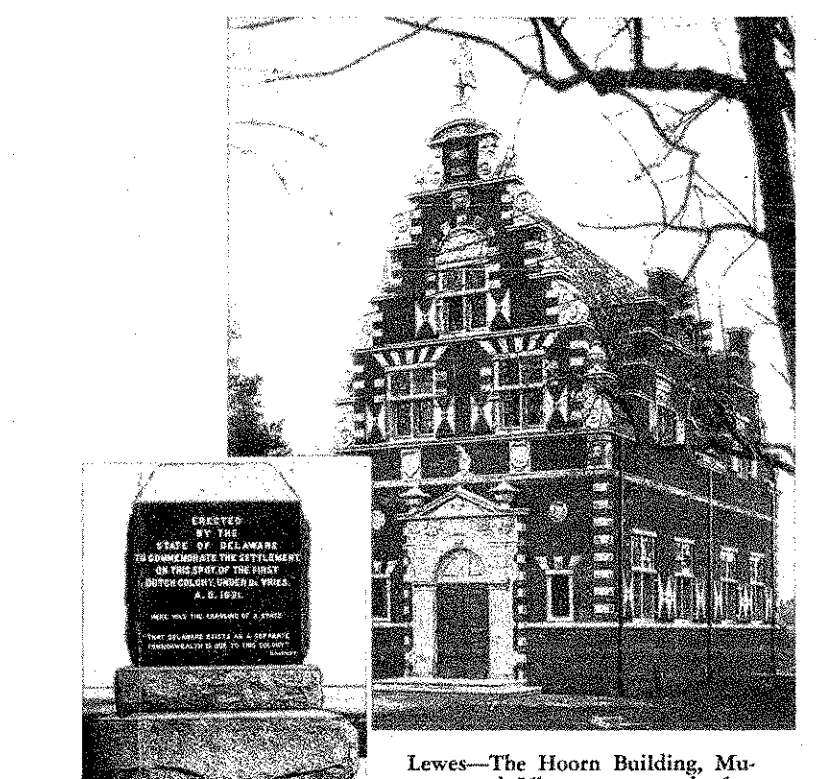
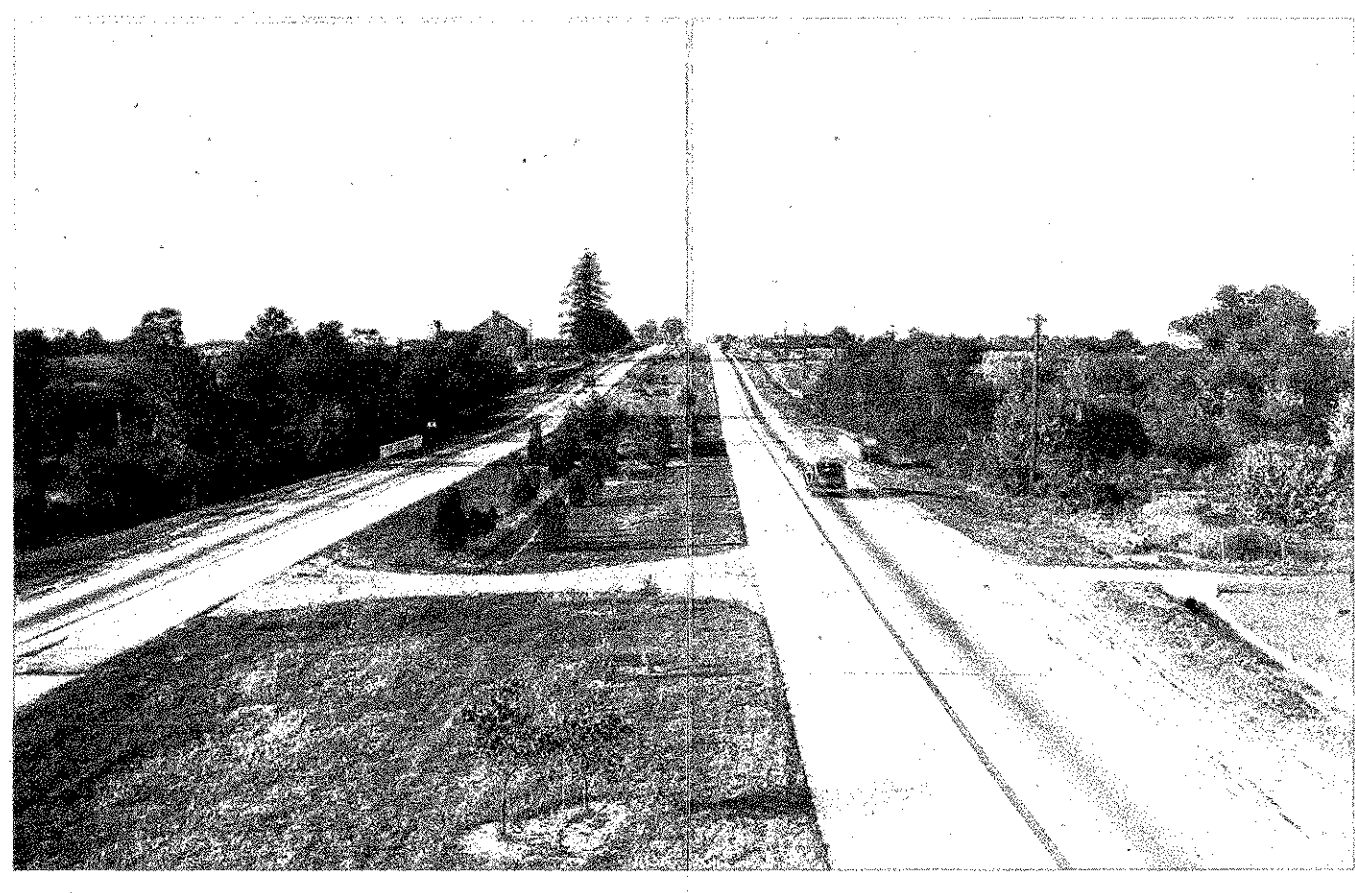
Rules of the Road

1. Keep your car under control at all times.
2. On Four lane highways, keep to the right and do not cross white line.
3. Do not stop or park on paved portion of highway.
4. Come to a Full Stop before entering Main highways.
5. Don't pass another car until you can see that the way ahead is clear for a safe distance.
6. Never pass a vehicle going in the same direction on a hill, curve or at a road intersection.
7. Do not pass to the right when overtaking another vehicle.
8. Don't drive at a speed that may endanger yourself or others. Remember wet roads are slippery—reduce speed accordingly.
9. Give hand signals when changing speed or direction.
10. Keep pace with the majority of traffic on heavily traveled highways. If autos are jamming up behind you or you are continually being passed, you are going too slow, speed up.
11. Be sure your brakes are in good working order.
12. See that both headlights and tail light are working; headlights adjusted so they illuminate the road but do not blind approaching driver; use dimmers when meeting other cars.
13. Proceed cautiously at intersecting highways and when meeting pedestrians.
14. Don't permit passengers or merchandise to crowd the driver's seat.
15. Give your whole attention to the job of driving.

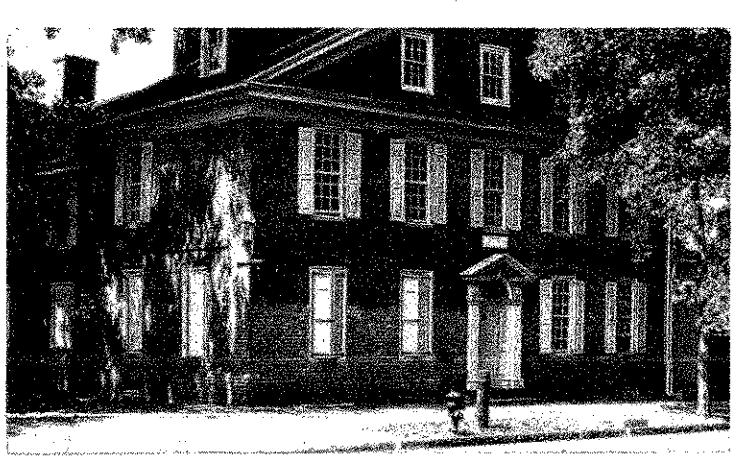


Foot of East Sixth to Seventh St., Wilmington. Old Swedes Church built 1798. Services still being held.

Portion of stone on which landed the first Swedish Colonists in America, March 29, 1638.



Lewes—The Hoorn Building, Museum and Library, patterned after the Town Hall of Hoorn, Holland from which place the first Dutch expedition sailed and landed at Lewes in 1651.



Corner Fourth and Delaware Streets, New Castle. Historic Museum. Rear of house built in 17th Century. Main building after 1738.

Delaware is Safety Minded

This view of the Du Pont Boulevard, U. S. 13 Dual Highway which runs from Wilmington to Dover, illustrates the safety of Delaware's roads. The safety mindedness of Delaware's Highway Commission and the people of Delaware is reflected in its outstanding automobile accident record:

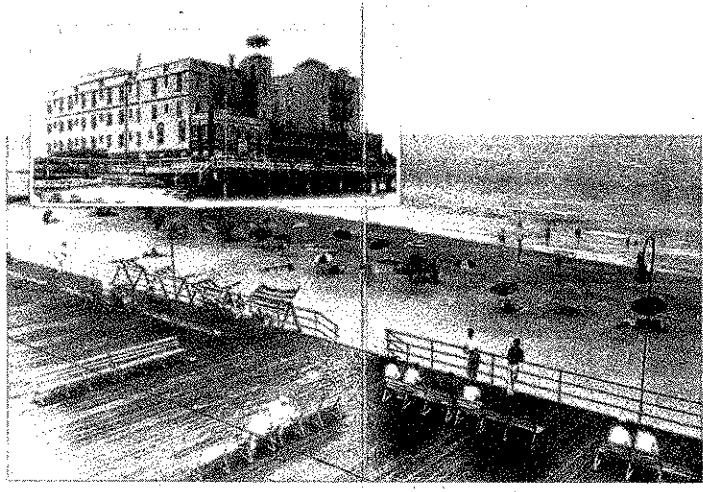
In face of a 1% increase in Automobile Fatalities for the nation as a whole in 1935 over 1934, Delaware

showed a decrease of 15%. This was equalled or surpassed by only 3 other states: North Dakota, Massachusetts, Montana and the District of Columbia. Delaware's record of miles traveled per Traffic Death is significant, showing a marked advance each year since 1924—

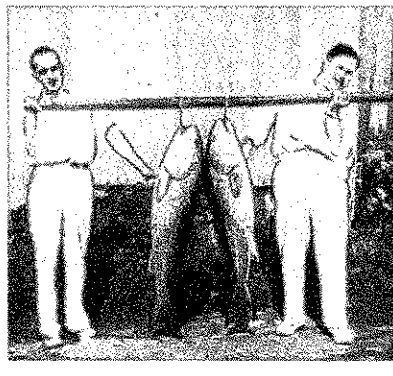
1924—2,511,000 Miles traveled	per traffic death
1935—9,193,135 Miles traveled	per traffic death



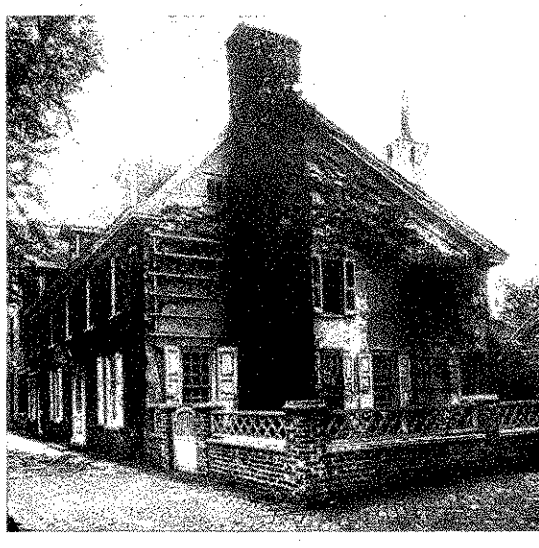
Water fowl abound in Delaware's bays and ponds.



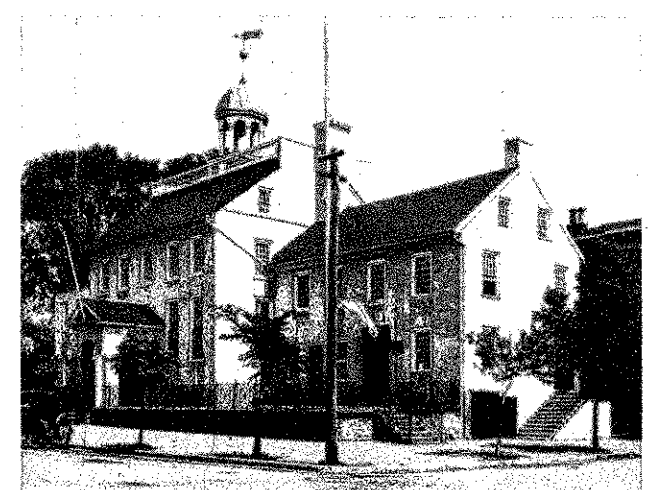
Rehoboth Beach, Delaware's popular and delightful ocean resort.



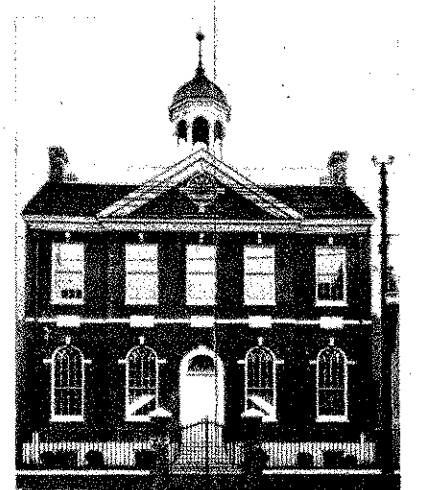
Some of the finest fishing in the world is found in Delaware (see inside map).



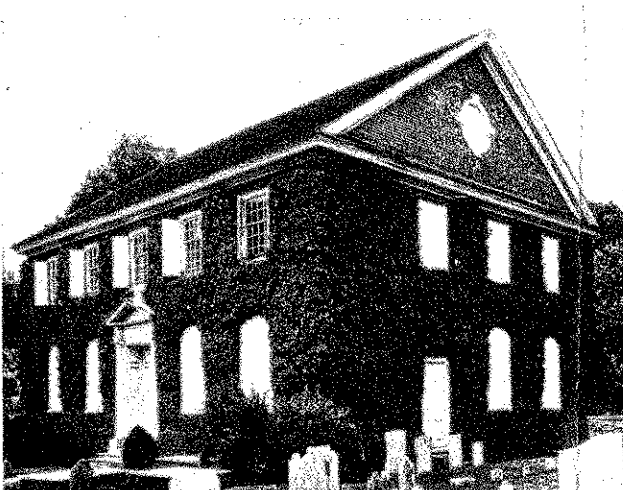
U. S. Route 13, north side of Dover Green, Dover, Ridgely House. Built 1728. Continuously occupied by Ridgely family up to the present.



Corner Third and Delaware Streets, New Castle. Town Hall and Market House. Built 1823.



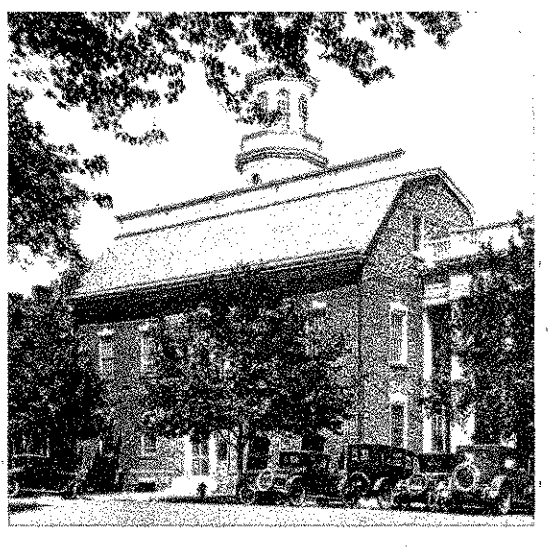
East side of Market Street, just south of Sixth, Wilmington Old Town Hall, now headquarters Historical Society of Delaware. Built 1798.



U. S. 13, 21.4 miles south of Wilmington. Old Drawers—built 1711. Many founders of State worshipped here.



Main Street, Newark. Old College, original building of the University of Delaware opened 1834.



U. S. Route 13, Dover Green, Dover. Delaware State House built 1787. Contains the original documents giving William Penn title to Delaware.

Wm. B. Brantley