

Migrating Your Databases to Amazon Aurora

First Published June 10, 2016

Updated July 28, 2021

This paper has been archived

For the latest technical content, refer to the HTML version:

<https://docs.aws.amazon.com/whitepapers/latest/migrating-databases-to-amazon-aurora/migrating-databases-to-amazon-aurora.html>



Notices

Customers are responsible for making their own independent assessment of the information in this document. This document: (a) is for informational purposes only, (b) represents current AWS product offerings and practices, which are subject to change without notice, and (c) does not create any commitments or assurances from AWS and its affiliates, suppliers or licensors. AWS products or services are provided “as is” without warranties, representations, or conditions of any kind, whether express or implied. The responsibilities and liabilities of AWS to its customers are controlled by AWS agreements, and this document is not part of, nor does it modify, any agreement between AWS and its customers.

© 2021 Amazon Web Services, Inc. or its affiliates. All rights reserved.

This paper has been archived

For the latest technical content, refer to the AWS
Whitepapers & Guides page:

<https://aws.amazon.com/whitepapers>

Contents

Introduction to Amazon Aurora	1
Database migration considerations.....	3
Migration phases.....	3
Application considerations	3
Sharding and read replica considerations	4
Reliability considerations	5
Cost and licensing considerations	6
Other migration considerations.....	6
Planning your database migration process	7
Homogeneous migration.....	7
Heterogeneous migration.....	9
Migrating large databases to Amazon Aurora.....	10
Partition and shard consolidation on Amazon Aurora.....	11
Migration options at a glance.....	12
RDS snapshot migration	13
Migration using Aurora Read Replica.....	18
Migrating the database schema.....	21
Homogeneous schema migration.....	22
Heterogeneous schema migration.....	23
Schema migration using the AWS Schema Conversion Tool	24
Migrating data.....	32
Introduction and general approach to AWS DMS	32
Migration methods.....	33
Migration procedure	34
Testing and cutover.....	43
Migration testing.....	44

This paper has been archived

For the latest technical content, refer to the AWS

Whitepapers & Guides page:

<https://aws.amazon.com/whitepapers>

Cutover	44
Conclusion	46
Contributors	46
Further reading	46
Document history.....	47

This paper has been archived

For the latest technical content, refer to the AWS
Whitepapers & Guides page:

<https://aws.amazon.com/whitepapers>

Archived

Abstract

Amazon Aurora is a MySQL and PostgreSQL-compatible, enterprise grade relational database engine. Amazon Aurora is a cloud-native database that overcomes many of the limitations of traditional relational database engines. The goal of this whitepaper is to highlight best practices of migrating your existing databases to Amazon Aurora. It presents migration considerations and the step-by-step process of migrating open-source and commercial databases to Amazon Aurora with minimum disruption to the applications.

This paper has been archived

For the latest technical content, refer to the AWS
Whitepapers & Guides page:

<https://aws.amazon.com/whitepapers>

Introduction to Amazon Aurora

For decades, traditional relational databases have been the primary choice for data storage and persistence. These database systems continue to rely on monolithic architectures and were not designed to take advantage of cloud infrastructure. These monolithic architectures present many challenges, particularly in areas such as cost, flexibility, and availability. In order to address these challenges, AWS redesigned relational database for the cloud infrastructure and introduced Amazon Aurora.

Amazon Aurora is a MySQL and PostgreSQL-compatible relational database engine that combines the speed, availability, and security of high-end commercial databases with the simplicity and cost-effectiveness of open-source databases. Aurora provides up to five times better performance than MySQL, three times better performance than PostgreSQL and comparable performance of high-end commercial databases. Amazon Aurora is priced at 1/10th the cost of commercial engines.

Amazon Aurora is available through the Amazon Relational Database Service (Amazon RDS) platform. Like other Amazon RDS databases, Aurora is a fully managed database service. With the Amazon RDS platform, most database management tasks such as hardware provisioning, software patching, setup, configuration, monitoring, and backup are completely automated.

Amazon Aurora is built for mission-critical workloads and is highly available by default. An Aurora database cluster spans multiple Availability Zones in a Region, providing out-of-the-box durability and fault tolerance to your data across physical data centers. An Availability Zone is composed of one or more highly available data centers operated by Amazon. Availability Zones are isolated from each other and are connected through low-latency links. Each segment of your database volume is replicated six times across these Availability Zones.

Amazon Aurora enables dynamic resizing for database storage space. Aurora cluster volumes automatically grow as the amount of data in your database increases with no performance or availability impact—so there is no need for estimating and provisioning large amount of database storage ahead of time. The storage space allocated to your Amazon Aurora database cluster will automatically increase up to a maximum size of 128 terabytes (TiB) and will automatically decrease when data is deleted.

Aurora's automated backup capability supports point-in-time recovery of your data, enabling you to restore your database to any second during your retention period, up to the last five minutes. Automated backups are stored in Amazon Simple Storage Service

(Amazon S3), which is designed for 99.999999999% durability. Amazon Aurora backups are automatic, incremental, and continuous and have no impact on database performance.

For applications that need read-only replicas, you can create up to 15 Aurora Replicas per Aurora database with very low replica lag. These replicas share the same underlying storage as the source instance, lowering costs and avoiding the need to perform writes at the replica nodes. Optionally, Aurora Global Database can be used for high read throughputs across six Regions up to 90 read replicas.

Amazon Aurora is highly secure and allows you to encrypt your databases using keys that you create and control through AWS Key Management Service (AWS KMS). On a database instance running with Amazon Aurora encryption, data stored at rest in the underlying storage is encrypted, as are the automated backups, snapshots, and replicas in the same cluster. Amazon Aurora uses SSL (AES-256) to secure data in transit.

For a complete list of Aurora features, see the [Amazon Aurora product page](#). Given the rich feature set and cost effectiveness of Amazon Aurora, it is increasingly viewed as the go-to database for mission-critical applications.

Amazon Aurora Serverless v2 (Preview) is the new version of Aurora Serverless, an on-demand, automatic scaling configuration of Amazon Aurora that automatically starts up, shuts down, and scales capacity up or down based on your application's needs. It scales instantly from hundreds to hundreds-of-thousands of transactions in a fraction of a second. As it scales, it adjusts capacity in fine-grained increments to provide just the right amount of database resources for the application's needs. There is no database capacity for you to manage, you pay only for the capacity your application consumes, and you can save up to 90% of your database cost compared to the cost of provisioning capacity for peak.

Aurora Serverless v2 is a simple and cost-effective option for any customer who cannot easily allocate capacity because they have variable and infrequent workloads or have a large number of databases. If you can predict your application's requirements and prefer the cost certainty of fixed-size instances, then you may want to continue using fixed-size instances.

Amazon Aurora capabilities discussed in this whitepaper apply to both MySQL and PostgreSQL database engines, unless otherwise specified. However, the migration practices discussed in this paper are specific to Aurora MySQL database engine. For more information about Aurora best practices specific to PostgreSQL database engine, see [Working with Amazon Aurora PostgreSQL](#) in the Amazon Aurora user guide.

Database migration considerations

A database represents a critical component in the architecture of most applications. Migrating the database to a new platform is a significant event in an application's lifecycle and may have an impact on application functionality, performance, and reliability. You should take a few important considerations into account before embarking on your first migration project to Amazon Aurora.

Migration phases

Because database migrations tend to be complex, we advocate taking a phased, iterative approach.

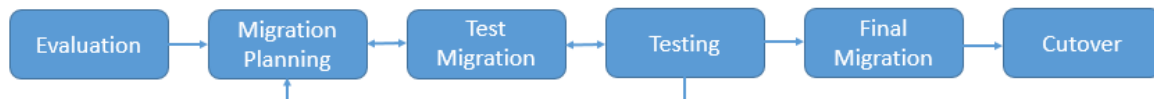


Figure 1 — Migration phases

Application considerations

This paper has been archived

Evaluate Aurora features

Although most applications can be migrated to work with Amazon Aurora database engines, you should make sure that your application works with Amazon Aurora. Amazon Aurora is designed to be wire-compatible with MySQL 5.6 and 5.7. Therefore, most of the code, applications, drivers, and tools that are used today with MySQL databases can be used with Aurora with little or no change.

However, certain MySQL features, like the MyISAM storage engine, are not available with Amazon Aurora. Also, due to the managed nature of the Aurora service, SSH access to database nodes is restricted, which may affect your ability to install third-party tools or plugins on the database host.

Performance considerations

Database performance is a key consideration when migrating a database to a new platform. Therefore, many successful database migration projects start with performance evaluations of the new database platform. Although the [Amazon Aurora Performance Assessment](#) paper gives you a decent idea of overall database performance, these benchmarks do not emulate the data access patterns of your

applications. For more useful results, test the database performance for time-sensitive workloads by running your queries (or subset of your queries) on the new platform directly.

Consider these strategies:

- If your current database is MySQL, migrate to Amazon Aurora with downtime and performance test your database with a test or staging version of your application or by replaying the production workload.
- If you are on a non-MySQL-compliant engine, you can selectively copy the busiest tables to Amazon Aurora and test your queries for those tables. This gives you a good starting point. Of course, testing after complete data migration will provide a full picture of real-world performance of your application on the new platform.

Amazon Aurora delivers comparable performance with commercial engines and significant improvement over MySQL performance. It does this by tightly integrating the database engine with an SSD-based virtualized storage layer designed for database workloads. This reduces writes to the storage system, minimizes lock contention, and eliminates delays created by database process threads.

Our tests with SysBench on r5.16xlarge instances show that Amazon Aurora delivers close to 800,000 reads per second and 200,000 writes per second, five times higher than MySQL running the same benchmark on the same hardware.

One area where Amazon Aurora significantly improves upon traditional MySQL is highly concurrent workloads. In order to maximize your workload's throughput on Amazon Aurora, we recommend architecting your applications to drive a large number of concurrent queries.

Sharding and read replica considerations

If your current database is sharded across multiple nodes, you may have an opportunity to combine these shards into a single Aurora database during migration. A single Amazon Aurora instance can scale up to 128 TB, supports thousands of tables, and supports a significantly higher number of reads and writes than a standard MySQL database.

If your application is read/write heavy, consider using Aurora read replicas for offloading read-only workload from the primary database node. Doing this can improve concurrency of your primary database for writes and will improve overall read and write

performance. Using read replicas can also lower your costs in a Multi-AZ configuration since you may be able to use smaller instances for your primary instance while adding failover capabilities in your database cluster. Aurora read replicas offer near-zero replication lag and you can create up to 15 read replicas.

Reliability considerations

An important consideration with databases is high availability and disaster recovery. Determine the RTO (recovery time objective) and RPO (recovery point objective) requirements of your application. With Amazon Aurora, you can significantly improve both these factors.

Amazon Aurora reduces database restart times to less than 60 seconds in most database crash scenarios. Aurora also moves the buffer cache out of the database process and makes it available immediately at restart time. In rare scenarios of hardware and Availability Zone failures, recovery is automatically handled by the database platform.

Aurora is designed to provide you zero RPO recovery within an AWS Region, which is a major improvement over on-premises database systems. Aurora maintains six copies of your data across three Availability Zones and automatically attempts to recover your database in a healthy AZ with no data loss. In the unlikely event that your data is unavailable within Amazon Aurora storage, you can restore from a DB snapshot or perform a point-in-time restore operation to a new instance.

This paper has been archived
For the latest technical content, refer to the AWS
Whitepapers & Guides page:

For cross-Region DR, Amazon Aurora also offers a global database feature, designed for globally distributed transactions applications, allowing a single Amazon Aurora database to span multiple AWS Regions. Aurora uses storage-based replication to replicate your data to other Regions with typical latency of less than one second and without impacting database performance. This enables fast local reads with low latency in each Region, and provides disaster recovery from Region-wide outages. You can promote the secondary AWS Region for read-write workloads in case of an outage or disaster in less than one minute.

You also have the option to create an Aurora Read Replica of an Aurora MySQL DB cluster in a different AWS Region, by using MySQL binary log (binlog) replication.

Each cluster can have up to five Read Replicas created this way, each in a different Region.

Cost and licensing considerations

Owning and running databases come with associated costs. Before planning a database migration, an analysis of the total cost of ownership (TCO) of the new database platform is imperative. Migration to a new database platform should ideally lower the total cost of ownership while providing your applications with similar or better features. If you are running an open-source database engine (MySQL, Postgres), your costs are largely related to hardware, server management, and database management activities. However, if you are running a commercial database engine (Oracle, SQL Server, DB2, and so on), a significant portion of your cost is database licensing.

Since Aurora is available at one-tenth of the cost of commercial engines, many applications moving to Aurora are able to significantly reduce their TCO. Even if you are running on an open-source engine like MySQL or Postgres, with Aurora's high performance and dual purpose read replicas, you can realize meaningful savings by moving to Amazon Aurora. See the [Amazon Aurora Pricing](#) page for more information.

Other migration considerations

Once you have considered application suitability, performance, TCO, and reliability factors, you should think about what it would take to migrate to the new platform.

For the latest technical content, refer to the AWS

[Whitepapers & Guides](https://aws.amazon.com/whitepapers) page: <https://aws.amazon.com/whitepapers>
It is important to estimate the amount of code and schema changes that you need to perform while migrating your database to Amazon Aurora. When migrating from MySQL-compatible databases, negligible code changes are required. However, when migrating from non-MySQL engines, you may be required to make schema and code changes. The AWS Schema Conversion Tool can help to estimate that effort (see the [Schema migration using the AWS Schema Conversion Tool section in this document](#)).

Application availability during migration

You have options of migrating to Amazon Aurora by taking a predictable downtime approach with your application or by taking a near-zero downtime approach. The approach you choose depends on the size of your database and the availability requirements of your applications. Whatever the case, it's a good idea to consider the impact of the migration process on your application and business before starting with a database migration. The next few sections explain both approaches in detail.

Modify connection string during migration

You need a way to point the applications to your new database. One option is to modify the connection strings for all of the applications. Another common option is to use DNS. In this case, you don't use the actual host name of your database instance in your connection string. Instead, consider creating a canonical name (CNAME) record that points to the host name of your database instance. Doing this allows you to change the endpoint to which your application points in a single location rather than tracking and modifying multiple connection string settings. If you choose to use this pattern, be sure to pay close attention to the time to live (TTL) setting for your CNAME record. If this value is set too high, then the host name pointed to by this CNAME might be cached longer than desired. If this value is set too low, additional overhead might be placed on your client applications by having to resolve this CNAME repeatedly. Though use cases differ, a TTL of 5 seconds is usually a good place to start.

Planning your database migration process

The previous section discussed some of the key considerations to take into account while migrating databases to Amazon Aurora. Once you have determined that Aurora is the right fit for your application, the next step is to decide on a preliminary migration approach and create a database migration plan.

For the latest technical content, refer to the AWS Homogeneous migration Whitepapers & Guides page:

If your source database is a MySQL 5.6 or 5.7 compliant database (MySQL, MariaDB, Percona, and so on.), then migration to Aurora is quite straightforward.

Homogeneous migration with downtime

If your application can accommodate a predictable length of downtime during off-peak hours, migration with the downtime is the simplest option and is a highly recommended approach. Most database migration projects fall into this category as most applications already have a well-defined maintenance window. You have the following options to migrate your database with downtime.

- **RDS snapshot migration** – If your source database is running on Amazon RDS MySQL 5.6 or 5.7, you can simply migrate a snapshot of that database to Amazon Aurora. For migrations with downtime, you either have to stop your application or stop writing to the database while snapshot and migration is in progress. The time to migrate primarily depends upon the size of the database

and can be determined ahead of the production migration by running a test migration. Snapshot migration option is explained in the [RDS Snapshot Migration](#) section.

- **Migration using native MySQL tools** — You may use native MySQL tools to migrate your data and schema to Aurora. This is a great option when you need more control over the database migration process, you are more comfortable using native MySQL tools, and other migration methods are not performing as well for your use case. You can create a dump of your data using the `mysqldump` utility, and then import that data into an existing Amazon Aurora MySQL DB cluster. For more information, see [Migrating from MySQL to Amazon Aurora by using mysqldump](#). You can copy the full and incremental backup files from your database to an Amazon S3 bucket, and then restore an Amazon Aurora MySQL DB cluster from those files. This option can be considerably faster than migrating data using `mysqldump`. For more information, see [Migrating data from MySQL by using an Amazon S3 bucket](#).
- **Migration using AWS Database Migration Service (AWS DMS)** — One-time migration using AWS DMS is another tool for moving your source database to Amazon Aurora. Before you can use AWS DMS to move the data, you need to copy the database schema from source to target using native MySQL tools. For the step-by-step process, see the [Migrating Data](#) section. Using AWS DMS is a great option when you don't have experience using native MySQL tools.

Homogeneous migration with near-zero downtime

In some scenarios you might want to migrate your database to Aurora with minimal downtime. Here are two examples:

- When your database is relatively large and the migration time using downtime options is longer than your application maintenance window
- When you want to run source and target databases in parallel for testing purposes

In such cases, you can replicate changes from your source MySQL database to Aurora in real time using replication. You have a couple of options to choose from:

- **Near-zero downtime migration using MySQL binlog replication** — Amazon Aurora supports traditional MySQL binlog replication. If you are running MySQL database, chances are that you are already familiar with classic binlog replication setup. If that's the case, and you want more control over the migration process,

one-time database load using native tools coupled with binlog replication gives you a familiar migration path to Aurora.

- **Near-zero downtime migration using AWS Database Migration Service (AWS DMS)** — In addition to supporting one-time migration, AWS DMS also supports real-time data replication using change data capture (CDC) from source to target. AWS DMS takes care of the complexities related to initial data copy, setting up replication instances, and monitoring replication. After the initial database migration is complete, the target database remains synchronized with the source for as long as you choose. If you are not familiar with binlog replication, AWS DMS is the next best option for homogenous, near-zero downtime migrations to Amazon Aurora. See the section [Introduction and General Approach to AWS DMS](#).
- **Near-zero downtime migration using Aurora Read Replica** — If your source database is running on Amazon RDS MySQL 5.6 or 5.7, you can migrate from a MySQL DB instance to an Aurora MySQL DB cluster by creating an Aurora read replica of your source MySQL DB instance. When the replica lag between the MySQL DB instance and the Aurora Read Replica is zero, you can direct your client applications to the Aurora read replica. This migration option is explained in the [Migrate using Aurora Read Replica](#) section.

Heterogeneous migration

For the latest technical content, refer to the AWS

Whitepapers & Guides page, <https://aws.amazon.com/whitepapers> (Oracle, SQL Server, PostgreSQL, and so on) to Amazon Aurora, several options can help you accomplish this migration quickly and easily.

Schema migration

Schema migration from a non-MySQL-compliant database to Amazon Aurora can be achieved using the AWS Schema Conversion Tool. This tool is a desktop application that helps you convert your database schema from an Oracle, Microsoft SQL Server, or PostgreSQL database to an Amazon RDS MySQL DB instance or an Amazon Aurora DB cluster. In cases where the schema from your source database cannot be automatically and completely converted, the AWS Schema Conversion Tool provides guidance on how you can create the equivalent schema in your target Amazon RDS database. For details, see the [Migrating the Database Schema](#) section.

Data migration

While supporting homogenous migrations with near-zero downtime, AWS Database Migration Service (AWS DMS) also supports continuous replication across heterogeneous databases and is a preferred option to move your source database to your target database, for both migrations with downtime and migrations with near-zero downtime. Once the migration has started, AWS DMS manages all the complexities of the migration process like data type transformation, compression, and parallel transfer (for faster data transfer) while ensuring that data changes to the source database that occur during the migration process are automatically replicated to the target.

Besides using AWS DMS, you can use various third-party tools like Attunity Replicate, Tungsten Replicator, Oracle Golden Gate, etc. to migrate your data to Amazon Aurora. Whatever tool you choose, take performance and licensing costs into consideration before finalizing your toolset for migration.

Migrating large databases to Amazon Aurora

Migration of large datasets presents unique challenges in every database migration project. Many successful large database migration projects use a combination of the following strategies:

- **Migration with continuous replication** — Large databases typically have extensive data with frequent updates. To migrate this data to the target database, you can first load baseline data from source to target and then enable replication (using MySQL native tools, AWS DMS, or third-party tools) for changes to catch up.
- **Copy static tables first** — If your database relies on large static tables with reference data, you may migrate these large tables to the target database before migrating your active dataset. You can leverage AWS DMS to copy tables selectively or export and import these tables manually.
- **Multiphase migration** — Migration of large database with thousands of tables can be broken down into multiple phases. For example, you may move a set of tables with no cross joins queries every weekend until the source database is fully migrated to the target database. Note that in order to achieve this, you need to make changes in your application to connect to two databases simultaneously while your dataset is on two distinct nodes. Although this is not a common migration pattern, this is an option nonetheless.

- **Database cleanup** — Many large databases contain data and tables that remain unused. In many cases, developers and DBAs keep backup copies of tables in the same database, or they just simply forget to drop unused tables. Whatever the reason, a database migration project provides an opportunity to clean up the existing database before the migration. If some tables are not being used, you might either drop them or archive them to another database. You might also delete old data from large tables or archive that data to flat files.

Partition and shard consolidation on Amazon Aurora

If you are running multiple shards or functional partitions of your database to achieve high performance, you have an opportunity to consolidate these partitions or shards on a single Aurora database. A single Amazon Aurora instance can scale up to 128 TB, supports thousands of tables, and supports a significantly higher number of reads and writes than a standard MySQL database. Consolidating these partitions on a single Aurora instance not only reduces the total cost of ownership and simplify database management, but it also significantly improves performance of cross-partition queries.

- **Functional partitions** — Functional partitioning means dedicating different nodes to different tasks. For example, in an e-commerce application, you might have one database node serving product catalog data, and another database node capturing and processing orders. As a result, these partitions usually have distinct, non-overlapping technical content. **For the latest technical content, refer to the AWS Whitepapers & Guides page: <https://aws.amazon.com/whitepapers>**
- **Consolidation strategy** — Migrate each functional partition as a distinct schema to your target Aurora instance. If your source database is MySQL compliant, use native MySQL tools to migrate the schema and then use AWS DMS to migrate the data, either one time or continuously using replication. If your source database is non-MySQL compliant, use AWS Schema Conversion Tool to migrate the schemas to Aurora and use AWS DMS for one-time load or continuous replication.
- **Data shards** — If you have the same schema with distinct sets of data across multiple nodes, you are leveraging database sharding. For example, a high-traffic blogging service may shard user activity and data across multiple database shards while keeping the same table schema.
- **Consolidation strategy** — Since all shards share the same database schema, you only need to create the target schema once. If you are using a MySQL-compliant database, use native tools to migrate the database schema to Aurora. If you are using a non-MySQL database, use AWS Schema Conversion Tool to

migrate the database schema to Aurora. Once the database schema has been migrated, it is best to stop writes to the database shards and use native tools or an AWS DMS one-time data load to migrate an individual shard to Aurora. If writes to the application cannot be stopped for an extended period, you might still use AWS DMS with replication but only after proper planning and testing.

Migration options at a glance

Table 1 — Migration options

Source database type	Migration with downtime	Near-zero downtime migration
Amazon RDS MySQL	<p>Option 1: RDS snapshot migration</p> <p>Option 2: Manual migration using native tools*</p> <p>Option 3: Schema migration using native tools and data load using AWS DMS</p>	<p>Option 1: Migration using native tools + binlog replication</p> <p>Option 2: Migrate using Aurora Read Replica</p> <p>Option 3: Schema migration using native tools + AWS DMS for data movement</p>
MySQL Amazon EC2 or on-premises	<p>Option 1: Migration using native tools</p> <p>Option 2: Schema migration with native tools + AWS DMS for data load</p>	<p>Option 1: Migration using native tools + binlog replication</p> <p>Option 2: Schema migration using native tools + AWS DMS to move data</p>
Oracle/SQL server	<p>Option 1: AWS Schema Conversion Tool + AWS DMS (recommended)</p> <p>Option 2: Manual or third-party tool for schema conversion + manual or third-party data load in target</p>	<p>Option 1: AWS Schema Conversion Tool + AWS DMS (recommended)</p> <p>Option 2: Manual or third-party tool for schema conversion + manual or third-party data load in target + third-party tool for replication.</p>
Other non-MySQL databases	<p>Option: Manual or third-party tool for schema conversion + manual or third-party data load in target</p>	<p>Option: Manual or third-party tool for schema conversion + manual or third-party data load in target + third-party tool for replication (GoldenGate, etc.)</p>

This paper has been archived

For the latest technical content, refer to the AWS

Whitepapers & Guides page:

<https://aws.amazon.com/whitepapers>

*MySQL Native tools: `mysqldump`, `SELECT INTO OUTFILE`, third-party tools like `mydumper/myloader`

RDS snapshot migration

To use RDS snapshot migration to move to Aurora, your MySQL database must be running on Amazon RDS MySQL 5.6 or 5.7, and you must make an RDS snapshot of the database. This migration method does not work with on-premises databases or databases running on Amazon Elastic Compute Cloud (Amazon EC2). Also, if you are running your Amazon RDS MySQL database on a version earlier than 5.6, you would need to upgrade it to 5.6 as a prerequisite.

The biggest advantage to this migration method is that it is the simplest and requires the fewest number of steps. In particular, it migrates over all schema objects, secondary indexes, and stored procedures along with all of the database data.

During snapshot migration without binlog replication, your source database must either be offline or in a read-only mode (so that no changes are being made to the source database during migration). To estimate downtime, you can simply use the existing snapshot of your database to do a test migration. If the migration time fits within your downtime requirements, then this may be the best method for you. Note that in some cases, migration using AWS DMS or native migration tools can be faster than using snapshot migration.

This paper has been archived.
For the latest technical content, refer to the AWS Whitepapers & Guides page.
<https://aws.amazon.com/whitepapers>
If you can't tolerate extended downtime, you can achieve near-zero downtime by creating an Aurora Read Replica from a source RDS MySQL. This migration option is explained in [Migrating using Aurora Read Replica section](#) in this document.

You can migrate either a manual or an automated DB snapshot. The general steps you must take are as follows:

1. Determine the amount of space that is required to migrate your Amazon RDS MySQL instance to an Aurora DB cluster. For more information, see the next section.
2. Use the Amazon RDS console to create the snapshot in the Region where the Amazon RDS MySQL instance is located.
3. Use the **Migrate Database** feature on the console to create an Amazon Aurora DB cluster that will be populated using the DB snapshot from the original DB instance of MySQL.

Note: Some MyISAM tables might not convert without errors and may require manual changes. For instance, the InnoDB engine does not permit an autoincrement field to be part of a composite key. Also, spatial indexes are not currently supported.

Estimating space requirements for snapshot migration

When you migrate a snapshot of a MySQL DB instance to an Aurora DB cluster, Aurora uses an Amazon Elastic Block Store (Amazon EBS) volume to format the data from the snapshot before migrating it. There are some cases where additional space is needed to format the data for migration. The two features that can potentially cause space issues during migration are MyISAM tables and using the `ROW_FORMAT=COMPRESSED` option. If you are not using either of these features in your source database, then you can skip this section because you should not have space issues. During migration, MyISAM tables are converted to InnoDB and any compressed tables are uncompressed. Consequently, there must be adequate room for the additional copies of any such tables.

The size of the migration volume is based on the allocated size of the source MySQL database that the snapshot was made from. Therefore, if you have MyISAM or compressed tables that make up a small percentage of the overall database size and there is available space in the original database, then migration should succeed without encountering any space issues. However, if the original database would not have enough room to store a copy of converted MyISAM tables as well as another (uncompressed) copy of compressed tables, then the migration volume will not be big enough. In this situation, you would need to modify the source Amazon RDS MySQL database to increase the database size allocation to make room for the additional copies of these tables, take a new snapshot of the database, and then migrate the new snapshot.

When migrating data into your DB cluster, observe the following guidelines and limitations:

- Although Amazon Aurora supports up to 128 TB of storage, the process of migrating a snapshot into an Aurora DB cluster is limited by the size of the Amazon EBS volume of the snapshot, and therefore is limited to a maximum size of 16 TB.

- Non-MyISAM tables in the source database can be up to 16 TB in size. However, due to additional space requirements during conversion, make sure that none of the MyISAM and compressed tables being migrated from your MySQL DB instance exceed 8 TB in size.

You might want to modify your database schema (convert MyISAM tables to InnoDB and remove `ROW_FORMAT=COMPRESSED`) prior to migrating it into Amazon Aurora. This can be helpful in the following cases:

- You want to speed up the migration process.
- You are unsure of how much space you need to provision.
- You have attempted to migrate your data and the migration has failed due to a lack of provisioned space.

Make sure that you are not making these changes in your production Amazon RDS MySQL database but rather on a database instance that was restored from your production snapshot. For more details on doing this, see [Reducing the Amount of Space Required to Migrate Data into Amazon Aurora](#) in the Amazon Relational Database Service User Guide.

This paper has been archived

Migrating a DB snapshot using the console

You can migrate a DB snapshot of an Amazon RDS MySQL DB instance to create an Aurora DB cluster. The new DB cluster is populated with the data from the original Amazon RDS MySQL DB instance. The DB snapshot must have been made from an RDS DB instance running MySQL 5.6 or 5.7. For information about creating a DB snapshot, see [Creating a DB snapshot](#) in the Amazon RDS User Guide.

If the DB snapshot is not in the Region where you want to locate your Aurora DB cluster, use the Amazon RDS console to copy the DB snapshot to that Region. For information about copying a DB snapshot, see [Copying a snapshot](#) in Amazon RDS User Guide.

To migrate a MySQL DB snapshot by using the console, do the following:

1. Sign in to the AWS Management Console and open the [Amazon RDS console](#) (sign in required).
2. Choose **Snapshots**.
3. On the **Snapshots** page, choose the Amazon RDS MySQL snapshot that you want to migrate into an Aurora DB cluster.

4. Choose Migrate Database.
5. On the **Migrate Database** page, specify the values that match your environment and processing requirements as shown in the following illustration. For descriptions of these options, see [Migrating an RDS for MySQL snapshot to Aurora](#) in the Amazon RDS User Guide.

Migrate Database

Migrate this database to a new DB Engine by selecting your desired options for the migrated instance.

Instance specifications

Migrate to DB Engine
Name of the Database Engine
aurora-mysql

DB Engine Version
Version Number of the Database Engine to be used for this instance
Aurora (MySQL 5.7) 2.07.2 (default)

DB Instance Class
Contains the compute and memory capacity of the DB Instance.
- Select one -

Settings

DB Snapshot ID
The identifier for the DB Snapshot.
[Redacted]

DB Instance Identifier [Info](#)
[Redacted] migrated

For [Redacted] WS

Whitepapers & Guides page:
<https://aws.amazon.com/whitepapers>

Network & Security

Virtual Private Cloud (VPC) [Info](#)
VPC defines the virtual networking environment for this DB instance.

Default VPC (vpc-e6d3669b)

Only VPCs with a corresponding DB subnet group are listed.

Subnet group [Info](#)
DB subnet group that defines which subnets and IP ranges the DB instance can use in the VPC you selected.

default-vpc-e6d3669b

Public accessibility [Info](#)

Yes
EC2 instances and devices outside of the VPC hosting the DB instance will connect to the DB instances. You must also select one or more VPC security groups that specify which EC2 instances and devices can connect to the DB instance.

No
DB instance will not have a public IP address assigned. No EC2 instance or devices outside of the VPC will be able to connect.

Availability zone [Info](#)

No preference

VPC security groups [Info](#)
Security groups have rules authorizing connections from all the EC2 instances and devices that need to access the DB instance.

Create new VPC security group

Choose existing VPC security groups

Database options

Database Port
Port number on which the database accepts connections.

3306

DB parameter group [Info](#)

default.aurora-mysql5.7

DB cluster parameter group [Info](#)

default.aurora-mysql5.7

Backup

Encryption

Encryption

Enable encryption [Learn more](#)

Select to encrypt the given instance. Master key ids and aliases appear in the list after they have been created using the Key Management Service(KMS) console.

Disable encryption

Log exports

Select the log types to publish to Amazon CloudWatch Logs

Audit log

Error log

General log

Slow query log

IAM role

The following service-linked role is used for publishing logs to CloudWatch Logs.

RDS Service Linked Role

Ensure that General, Slow Query, and Audit Logs are turned on. Error logs are enabled by default. [Learn more](#)

Maintenance

Auto Minor Version Upgrade

Specifies if the DB Instance should receive automatic engine version upgrades when they are available.

Yes

No

Cancel **Migrate**

Fo

NS

whitepapers & Guides page:

Figure 2 — Snapshot migration

<https://aws.amazon.com/whitepapers>

6. Choose **Migrate** to migrate your DB snapshot.

In the list of instances, choose the appropriate arrow icon to show the DB cluster details and monitor the progress of the migration. This details panel displays the cluster endpoint used to connect to the primary instance of the DB cluster. For more information on connecting to an Amazon Aurora DB cluster, see [Connecting to an Amazon Aurora DB Cluster](#) in the Amazon Relational Database Service User Guide.

Migration using Aurora Read Replica

Aurora uses MySQL DB engines binary log replication functionality to create a special type of DB cluster called an Aurora read replica for a source MySQL DB instance. Updates made to the source instance are asynchronously replicated to Aurora Read Replica.

We recommend creating an Aurora read replica of your source MySQL DB instance to migrate to an Aurora MySQL DB cluster with near-zero downtime. The migration process begins by creating a DB snapshot of the existing DB Instance as the basis for a fresh Aurora Read Replica. After the replica is set up, replication is used to bring it up to date with respect to the source. Once the replication lag drops to zero, the replication is complete. At this point, you can promote the Aurora Read Replica into a standalone Aurora DB cluster and point your client applications to it.

Migration will take a while, roughly several hours per terabyte (TiB) of data. Replication runs somewhat faster for InnoDB tables than it does for MyISAM tables, and also benefits from the presence of uncompressed tables. If migration speed is a factor, you can improve it by moving your MyISAM tables to InnoDB tables and uncompressing any compressed tables. For further details, refer to [Migrating from a MySQL DB instance to Aurora MySQL using Read Replica](#) in the Amazon RDS User Guide.

To use Aurora Read Replica to migrate from RDS MySQL, your MySQL database must be running on Amazon RDS MySQL 5.6 or 5.7. This migration method does not work with on-premises databases or databases running on Amazon Elastic Compute Cloud (Amazon EC2). Also, if you are running your Amazon RDS MySQL database on a version earlier than 5.6, you would need to upgrade it to 5.6 as a prerequisite.

This paper has been archived

Create a read replica using the Console

For the latest technical content, refer to the [AWS Whitepapers & Guides](https://aws.amazon.com/whitepapers) page:

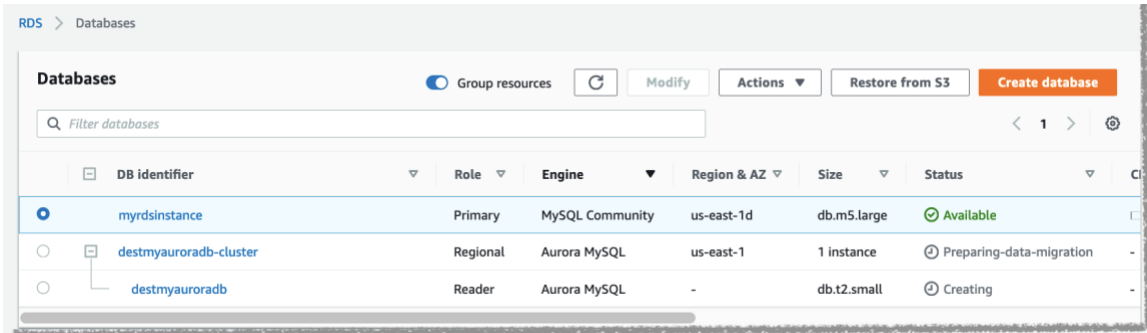
- To migrate an existing RDS MySQL DB instance, simply select the instance in the [AWS Management Console](#) and choose **Instance Actions**, and choose **Create Aurora read replica**.

The screenshot shows the AWS Management Console interface for an RDS instance named 'myrdsinstance'. The breadcrumb navigation is 'RDS > Databases > myrdsinstance'. The instance name 'myrdsinstance' is displayed at the top. Below it, there is a 'Summary' section with a table of instance details:

DB identifier	CPU	Status
myrdsinstance	1.57%	Available
Role	Current activity	Engine
Instance	0 Sessions	MySQL Community

At the bottom of the console, there are tabs for 'Connectivity & security', 'Monitoring', 'Logs & events', 'Configuration', 'Maintenance & backups', and 'tags'. On the right side, there are 'Modify' and 'Actions' buttons. The 'Actions' dropdown menu is open, showing options: Stop, Reboot, Delete, Create read replica, **Create Aurora read replica** (highlighted), Promote, Take snapshot, Restore to point in time, and Migrate snapshot.

- Specify the **Values** for the Aurora cluster. See [Replication with Amazon Aurora](#). Monitor the progress of the migration in the console.



You can also look at the sequence of events in RDS events console.

DB identifier	Category	Timestamp	Message
destmyauroradb-cluster	Clusters	May 27, 2021, 8:24:00 PM UTC	DB cluster created
myrdsinstance	Instances	May 27, 2021, 8:26:56 PM UTC	Backing up DB instance
myrdsinstance	Instances	May 27, 2021, 8:28:41 PM UTC	Finished DB Instance backup
destmyauroradb	Instances	May 27, 2021, 8:52:26 PM UTC	Binlog position from crash recovery is mysql-bin-changelog.000007.456
destmyauroradb	Instances	May 27, 2021, 8:53:29 PM UTC	DB instance created
destmyauroradb	Instances	May 27, 2021, 8:55:11 PM UTC	Replication for the Read Replica resumed

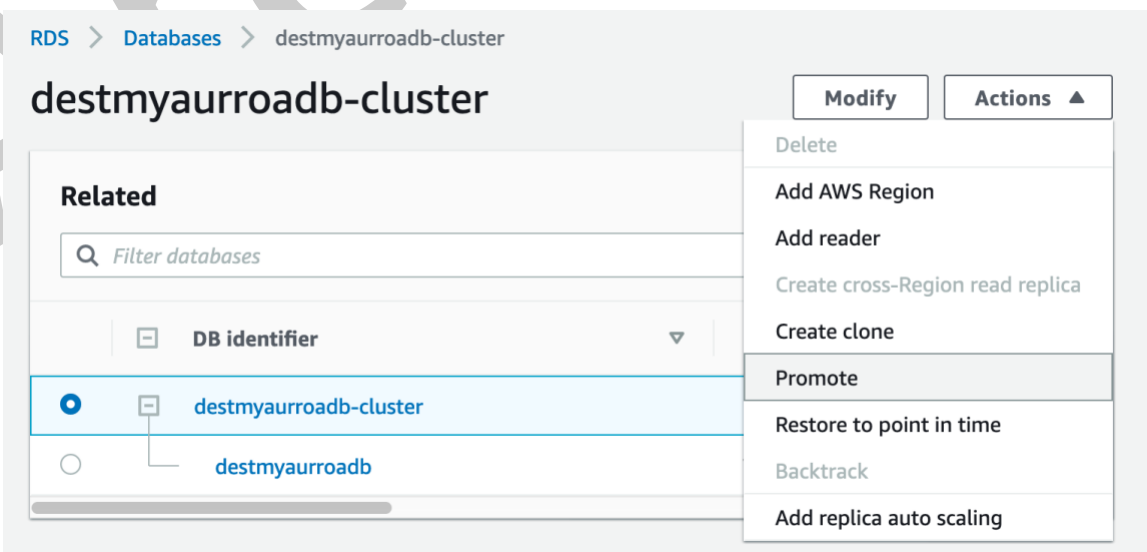
This paper has been archived

- After the migration is complete, wait for the Replica lag to reach zero on the new Aurora read replica to indicate that the replica is in sync with the source.
- Stop the flow of new transactions to the source MySQL DB instance.
- Promote the Aurora read replica to a standalone DB cluster.

For the latest technical content, refer to the AWS

Whitepapers & Guides page:

<https://aws.amazon.com/whitepapers>



6. To see if the process is complete, you can check **Recent events** for the new Aurora cluster:

Recent events (2)	
<input type="text" value="Filter db events"/>	
Time	System notes
May 27, 2021, 9:22:14 PM UTC	DB cluster created
May 27, 2021, 10:03:26 PM UTC	Promoted Read Replica cluster to a stand-alone database cluster.

Now you can point your application to use the Aurora cluster's reader and writer endpoints.

Migrating the database schema

RDS DB snapshot migration migrates both the full schema and data to the new Aurora instance. However, if your source database location or application uptime requirements do not allow the use of RDS snapshot migration, then you first need to migrate the database schema from the source database to the target instance before you can move the actual data. A database schema is a skeleton structure that represents the logical view of the entire database, and typically includes the following:

- This paper has been archived**
- For the latest technical content, refer to the AWS Whitepapers & Guides page:**
- **Database storage objects** — tables, columns, constraints, indexes, sequences, user-defined types, and data types
 - **Database code objects** — functions, procedures, packages, triggers, views, materialized views, events, SQL scalar functions, SQL inline functions, SQL table functions, attributes, variables, constants, table types, public types, private types, cursors, exceptions, parameters, and other objects

In most situations, the database schema remains relatively static, and therefore you don't need downtime during the database schema migration step. The schema from your source database can be extracted while your source database is up and running without affecting the performance. If your application or developers do make frequent changes to the database schema, make sure that these changes are either paused while the migration is in process, or are accounted for during the schema migration process.

Depending on the type of your source database, you can use the techniques discussed in the next sections to migrate the database schema. As a prerequisite to schema migration, you must have a target Aurora database created and available.

Homogeneous schema migration

If your source database is MySQL 5.6-compliant and is running on Amazon RDS, Amazon EC2, or outside AWS, you can use native MySQL tools to export and import the schema.

- **Exporting database schema** — You can use the `mysqldump` client utility to export the database schema. To run this utility, you need to connect to your source database and redirect the output of `mysqldump` command to a flat file. The `--no-data` option ensures that only database schema is exported without any actual table data. For the complete `mysqldump` command reference, see [mysqldump — A Database Backup Program](#).

```
mysqldump -u source_db_username -p --no-data --routines --triggers
-databases source_db_name > DBSchema.sql
```

This paper has been archived

- **Importing database schema into Aurora** — To import the schema to your Aurora instance, connect to your Aurora database from a MySQL command line client (or a corresponding Windows client), and direct the contents of the export file into MySQL. **Whitepapers & Guides page:**

```
mysql -h aurora-cluster-endpoint -u username -p < DBSchema.sql
```

Note the following:

- If your source database contains stored procedures, triggers, and views, you need to remove `DEFINER` syntax from your dump file. A simple Perl command to do that is given below. Doing this creates all triggers, views, and stored procedures with the current connected user as `DEFINER`. Be sure to evaluate any security implications this might have.

```
$perl -pe 's/\sDEFINER=[^`]+@[^`]+//' < DBSchema.sql >
DBSchemaWithoutDEFINER.sql
```

- Amazon Aurora supports InnoDB tables only. If you have MyISAM tables in your source database, Aurora automatically changes the engine to InnoDB when the `CREATE TABLE` command is run.
- Amazon Aurora does not support compressed tables (that is, tables created with `ROW_FORMAT=COMPRESSED`). If you have compressed tables in your source database, Aurora automatically changes `ROW_FORMAT` to `COMPACT` when the `CREATE TABLE` command is run.

Once you have successfully imported the schema into Amazon Aurora from your MySQL 5.6-compliant source database, the next step is to copy the actual data from the source to the target. For more information, see the [Introduction and General Approach to AWS DMS](#) later in this paper.

Heterogeneous schema migration

If your source database isn't MySQL compatible, you must convert your schema to a format compatible with Amazon Aurora. Schema conversion from one database engine to another database engine is a nontrivial task and may involve rewriting certain parts of your database and application code. You have two main options for converting and migrating your schema to Amazon Aurora.

- **AWS Schema Conversion Tool** — The [AWS Schema Conversion Tool](#) makes the migration process much easier by automatically converting the source database schema and a majority of the custom code, including views, stored procedures, and functions, to a format compatible with the target database. Any code that cannot be automatically converted is clearly marked so that it can be manually converted. You can use this tool to convert your source databases running on either Oracle or Microsoft SQL Server to an Amazon Aurora, MySQL, or PostgreSQL target database in either Amazon RDS or Amazon EC2. Using the AWS Schema Conversion Tool to convert your Oracle, SQL Server, or PostgreSQL schema to an Aurora-compatible format is the preferred method.

- **Manual schema migration and third-party tools** — If your source database is not Oracle, SQL Server, or PostgreSQL, you can either manually migrate your source database schema to Aurora or use third-party tools to migrate schema to a format that is compatible with MySQL 5.6. Manual schema migration can be a fairly involved process depending on the size and complexity of your source schema. In most cases, however, manual schema conversion is worth the effort given the cost savings, performance benefits, and other improvements that come with Amazon Aurora.

Schema migration using the AWS Schema Conversion Tool

The AWS Schema Conversion Tool provides a project-based user interface to automatically convert the database schema of your source database into a format that is compatible with Amazon Aurora. It is highly recommended that you use AWS Schema Conversion Tool to evaluate the database migration effort and for pilot migration before the actual production migration.

The following description walks you through the high-level steps of using AWS the Schema Conversion Tool. For detailed instructions, see the [AWS Schema Conversion Tool User Guide](#).

1. First, install the tool. The AWS Schema Conversion Tool is available for the Microsoft Windows, macOS, Ubuntu Linux, and Fedora Linux.

Detailed download and installation instructions can be found in the [installation and update](#) section of the user guide. Where you install AWS Schema Conversion Tool is important. The tool needs to connect to both source and target databases directly in order to convert and apply schema. Make sure that the desktop where you install AWS Schema Conversion Tool has network connectivity with the source and target databases.

2. Install JDBC drivers. The AWS Schema Conversion Tool uses JDBC drivers to connect to the source and target databases. In order to use this tool, you must download these JDBC drivers to your local desktop. Instructions for driver download can be found at [Installing the required database drivers](#) in the AWS Schema Conversion Tool User Guide. Also, check the [AWS forum for AWS Schema Conversion Tool](#) for instructions on setting up JDBC drivers for different database engines.

3. Create a target database. Create an Amazon Aurora target database. For instructions on creating an Amazon Aurora database, see [Creating an Amazon Aurora DB Cluster](#) in the Amazon RDS User Guide.
4. Open the AWS Schema Conversion Tool and start the New Project Wizard.

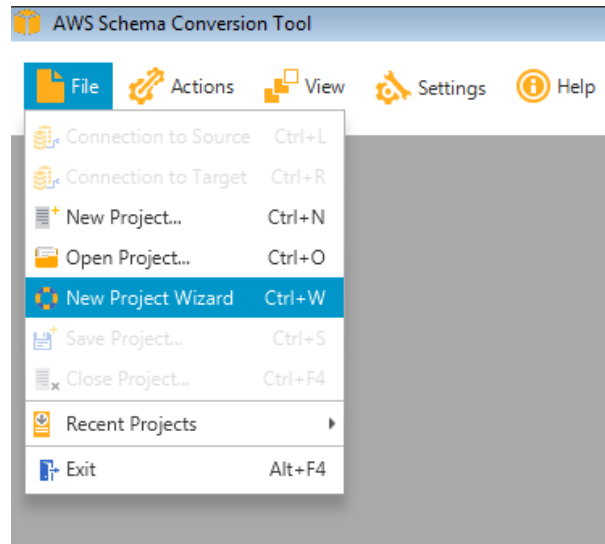


Figure 3. Create a new AWS Schema Conversion Tool project

5. Configure the source database and test connectivity between AWS Schema Conversion Tool and the source database. Your source database must be reachable from your desktop for this to work, so make sure that you have the appropriate network and firewall settings in place.

<https://aws.amazon.com/whitepapers>

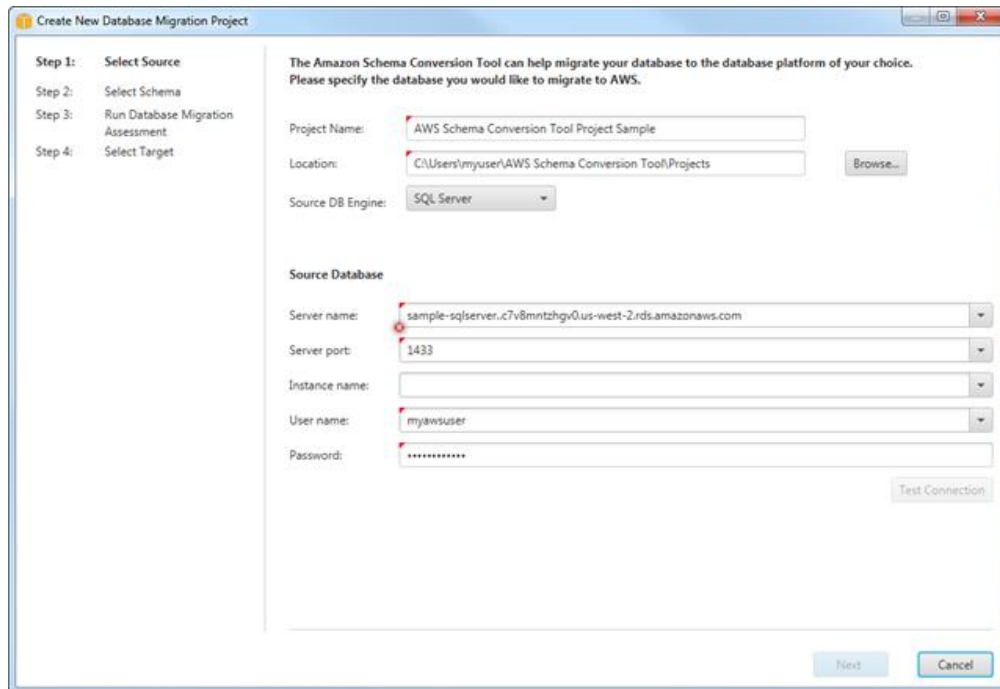


Figure 4 — **Create New Database Migration Project** wizard

- In the next screen, select the schema of your source database that you want to convert to Amazon Aurora.

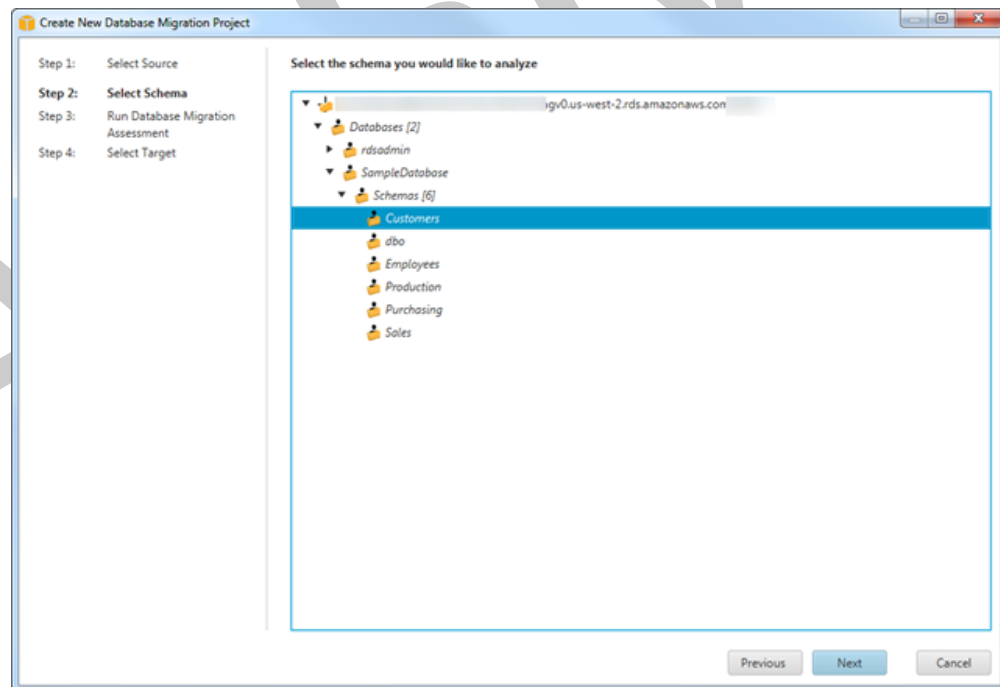


Figure 5 — **Select Schema** step of the migration wizard

7. Run the database migration assessment report. This report provides important information regarding the conversion of the schema from your source database to your target Amazon Aurora instance. It summarizes all of the schema conversion tasks and details the action items for parts of the schema that cannot be automatically converted to Aurora. The report also includes estimates of the amount of effort that it will take to write the equivalent code in your target database that could not be automatically converted.
8. Choose **Next** to configure the target database. You can view this migration report again later.

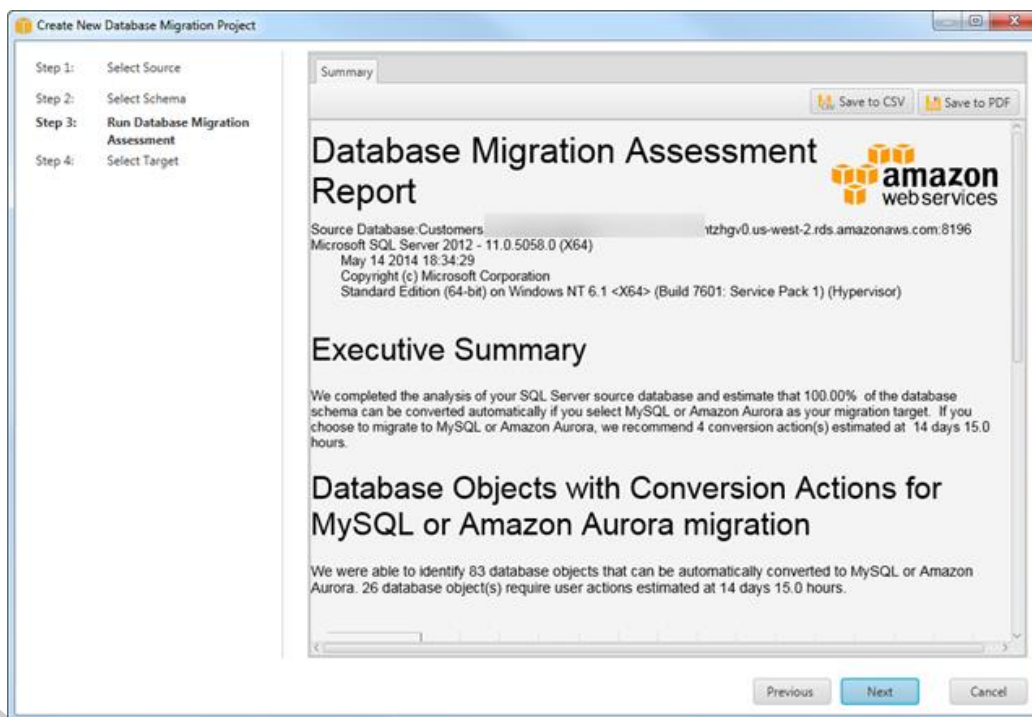


Figure 6 — Migration report

9. Configure the target Amazon Aurora database and test connectivity between the AWS Schema Conversion Tool and the source database. Your target database must be reachable from your desktop for this to work, so make sure that you have appropriate network and firewall settings in place.
10. Choose **Finish** to go to the project window.
11. Once you are at the project window, you have already established a connection to the source and target database and are now ready to evaluate the detailed assessment report and migrate the schema.

12. In the left panel that displays the schema from your source database, choose a schema object to create an assessment report for. Right-click the object and choose **Create Report**.

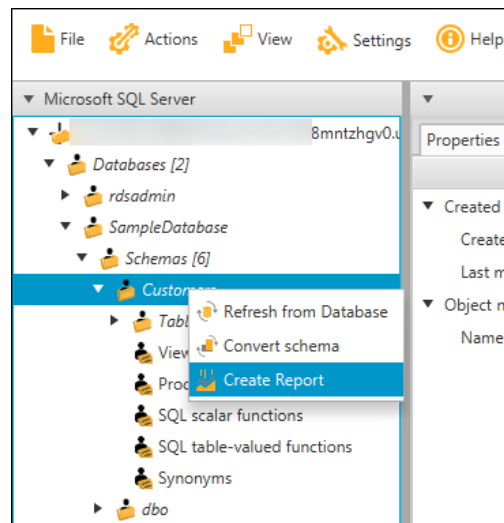
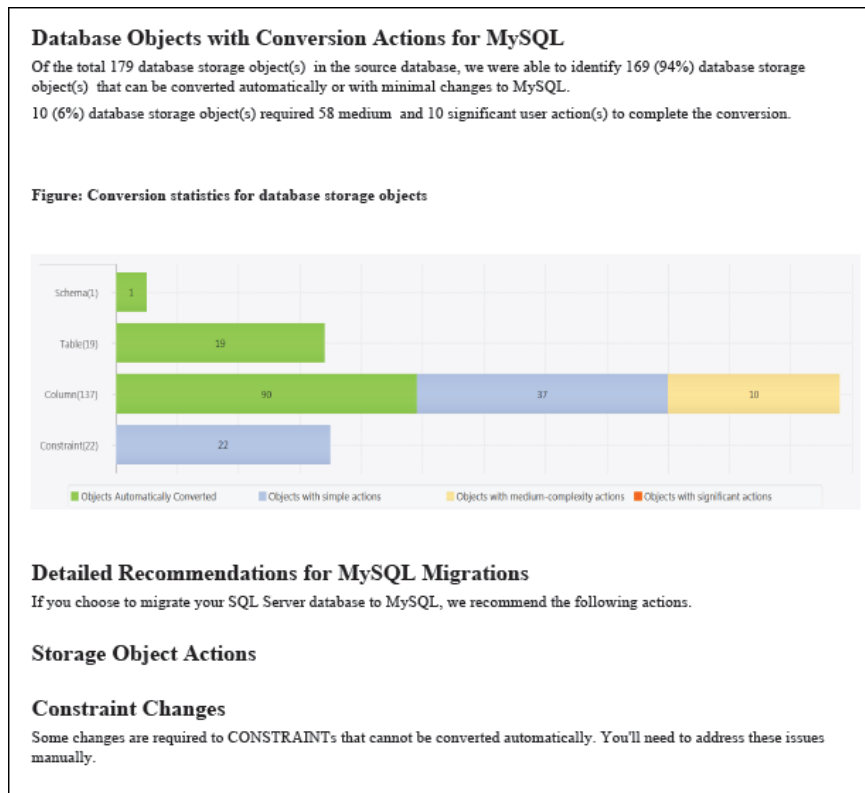


Figure 7 — Create migration report

The **Summary** tab displays the summary information from the database migration assessment report. It shows items that were automatically converted and items that could not be automatically converted.

For schema items that could not be automatically converted to the target database engine, the summary includes an estimate of the effort that it would take to create a schema that is equivalent to your source database in your target DB instance. The report categorizes the estimated time to convert these schema items as follows:

- **Simple** – Actions that can be completed in less than one hour.
- **Medium** – Actions that are more complex and can be completed in one to four hours.
- **Significant** – Actions that are very complex and will take more than four hours to complete.



This paper has been archived
Figure 8 — Migration report

Important: If you are evaluating the effort required for your database migration project, this assessment report is an important artifact to consider. Study the assessment report in details to determine what code changes are required in the database schema and what impact the changes might have on your application functionality and design.

- The next step is to convert the schema. The converted schema is not immediately applied to the target database. Instead, it is stored locally until you explicitly apply the converted schema to the target database. To convert the schema from your source database, choose a schema object to convert from the left panel of your project. Right-click the object and choose **Convert schema**, as shown in the following illustration.

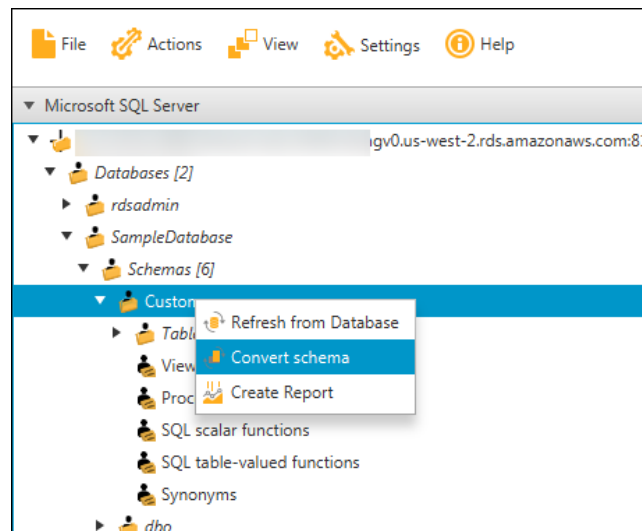


Figure 9 — Convert schema

This action adds converted schema to the right panel of the project window and shows objects that were automatically converted by the AWS Schema Conversion Tool.

You can respond to the action items in the assessment report in different ways:

- Add equivalent schema manually** — You can write the portion of the schema that can be automatically converted to your target DB instance by choosing **Apply to database** in the right pane of the project. The schema that is written to your target DB instance won't contain the items that couldn't be automatically converted. Those items are listed in your database migration assessment report.

<https://aws.amazon.com/whitepapers>

After applying the schema to your target DB instance, you can then manually create the schema in your target DB instance for the items that could not be automatically converted. In some cases, you may not be able to create an equivalent schema in your target DB instance. You might need to redesign a portion of your application and database to use the functionality that is available from the DB engine for your target DB instance. In other cases, you can simply ignore the schema that can't be automatically converted.

Caution: If you manually create the schema in your target DB instance, do not choose **Apply to database** until after you have saved a copy of any manual work that you have done. Applying the schema from your project to your target DB instance overwrites schema of the same name in the target DB instance, and you lose any updates that you added manually.

- **Modify your source database schema and refresh the schema in your project** — For some items, you might be best served to modify the database schema in your source database to the schema that is compatible with your application architecture and that can also be automatically converted to the DB engine of your target DB instance. After updating the schema in your source database and verifying that the updates are compatible with your application, choose **Refresh from Database** in the left panel of your project to update the schema from your source database. You can then convert your updated schema and generate the database migration assessment report again. The action item for your updated schema no longer appears.
14. When you are ready to apply your converted schema to your target Aurora instance, choose the schema element from the right panel of your project. Right-click the schema element and choose **Apply to database**, as shown in the following figure.

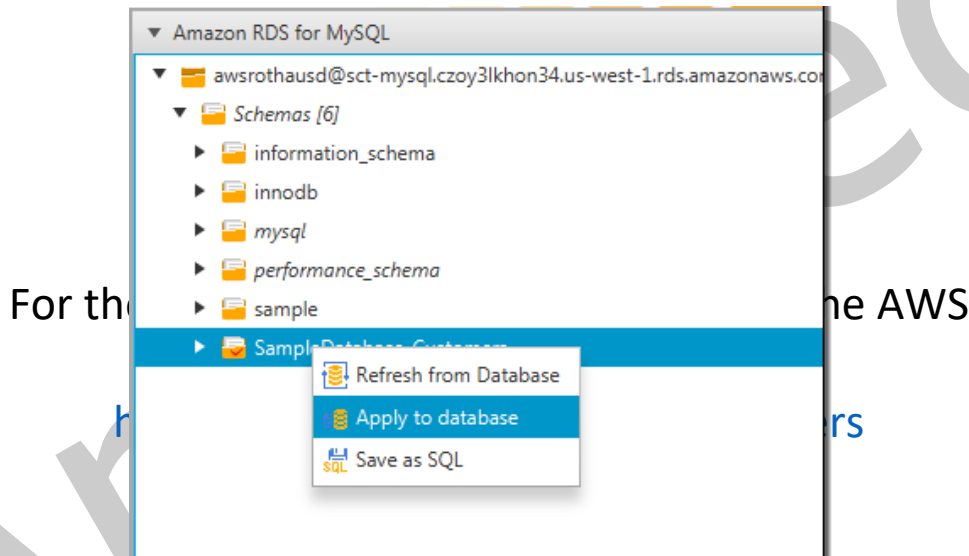


Figure 10 — Apply schema to database

Note: The first time that you apply your converted schema to your target DB instance, the AWS Schema Conversion Tool adds an additional schema (`AWS_ORACLE_EXT` or `AWS_SQLSERVER_EXT`) to your target DB instance. This schema implements system functions of the source database that are required when writing your converted schema to your target DB instance. Do not modify this schema, or you might encounter unexpected results in the converted schema that is written to your target DB instance. When your schema is fully migrated to your target DB instance, and you no longer need the AWS Schema Conversion Tool, you can delete the `AWS_ORACLE_EXT` or `AWS_SQLSERVER_EXT` schema.

The AWS Schema Conversion Tool is an easy-to-use addition to your migration toolkit. For additional best practices related to AWS Schema Conversion Tool, see the [Best practices for the AWS SCT](#) topic in the *AWS Schema Conversion Tool User Guide*.

Migrating data

After the database schema has been copied from the source database to the target Aurora database, the next step is to migrate actual data from source to target. While data migration can be accomplished using different tools, we recommend moving data using the AWS Database Migration Service (AWS DMS) as it provides both the simplicity and the features needed for the task at hand.

For the latest technical content, refer to the AWS Whitepapers & Guides page:
Introduction and general approach to AWS DMS
<https://aws.amazon.com/whitepapers>

The AWS Database Migration Service (AWS DMS) makes it easy for customers to migrate production databases to AWS with minimal downtime. You can keep your applications running while you are migrating your database. In addition, the AWS Database Migration Service ensures that data changes to the source database that occur during and after the migration are continuously replicated to the target. Migration tasks can be set up in minutes in the AWS Management Console. The AWS Database Migration Service can migrate your data to and from widely used database platforms, such as Oracle, SQL Server, MySQL, PostgreSQL, Amazon Aurora, MariaDB, and Amazon Redshift.

The service supports homogenous migrations such as Oracle to Oracle, as well as heterogeneous migrations between different database platforms, such as Oracle to Amazon Aurora or SQL Server to MySQL. You can perform one-time migrations, or you

can maintain continuous replication between databases without a customer having to install or configure any complex software.

AWS DMS works with databases that are on premises, running on Amazon EC2, or running on Amazon RDS. However, AWS DMS does not work in situations where both the source database and the target database are on premises; one endpoint must be in AWS.

AWS DMS supports specific versions of Oracle, SQL Server, Amazon Aurora, MySQL, and PostgreSQL. For currently supported versions, see the [Sources for data migration](#). However, this whitepaper is just focusing on Amazon Aurora as a migration target.

Migration methods

AWS DMS provides three methods for migrating data:

- **Migrate existing data** — This method creates the tables in the target database, automatically defines the metadata that is required at the target, and populates the tables with data from the source database (also referred to as a “full load”). The data from the tables is loaded in parallel for improved efficiency. Tables are only created in case of primary indexes and secondary indexes aren't created automatically by AWS DMS. Read further for details.
- **Migrate existing data and replicate ongoing changes** — This method does a full load, as described above, and in addition captures any ongoing changes being made to the source database during the full load and stores them on the replication instance. Once the full load is complete, the stored changes are applied to the destination database until it has been brought up to date with the source database. Additionally, any ongoing changes being made to the source database continue to be replicated to the destination database to keep them in sync. This migration method is very useful when you want to perform a database migration with very little downtime.
- **Replicate data changes only** — This method just reads changes from the recovery log file of the source database and applies these changes to the target database on an ongoing basis. If the target database is unavailable, these changes are buffered on the replication instance until the target becomes available.

- When AWS DMS is performing a full load migration, the processing puts a load on the tables in the source database, which could affect the performance of applications that are hitting this database at the same time. If this is an issue, and you cannot shut down your applications during the migration, you can consider the following approaches:
 - Running the migration at a time when the application load on the database is at its lowest point.
 - Creating a read replica of your source database and then performing the AWS DMS migration from the read replica.

Migration procedure

The general outline for using AWS DMS is as follows:

1. Create a target database.
2. Copy the schema.
3. Create an AWS DMS replication instance.
4. Define the database scope and target options.
5. Create and run a migration task.

This paper has been archived
For the latest technical content, refer to the AWS
Create target database Whitepapers & Guides page:

Create your target Amazon Aurora database cluster using the procedure outlined in <https://aws.amazon.com/whitepapers/creating-an-amazon-aurora-db-cluster>. You should create the target database in the Region and with an instance type that matches your business requirements. Also, to improve the performance of the migration, verify that your target database does not have Multi-AZ deployment enabled; you can enable that once the load has finished.

Copy schema

Additionally, you should create the schema in this target database. AWS DMS supports basic schema migration, including the creation of tables and primary keys. However, AWS DMS doesn't automatically create secondary indexes, foreign keys, stored procedures, user accounts, and so on, in the target database. For full schema migration details, see the [Migrating the Database Schema](#) section.

Create an AWS DMS replication instance

In order to use the AWS DMS service, you must create an AWS DMS replication instance, which runs in your VPC. This instance reads the data from the source database, performs the specified table mappings, and writes the data to the target database. In general, using a larger replication instance size speeds up the database migration (although the migration can also be gated by other factors such as the capacity of the source and target databases, connection latency, and so on.). Also, your replication instance can be stopped once your database migration is complete.



Figure 11 — AWS Database Migration Service

AWS DMS currently supports burstable, compute- and memory-optimized instance classes for replication instances. The burstable instance classes are low-cost standard instances designed to provide a baseline level of CPU performance with the ability to burst above the baseline. They are suitable for the typical, intermittent, and infrequent database migration process as well as for periodic data migration tasks that can benefit from the CPU burst capability.

<https://aws.amazon.com/whitepapers>

The compute-optimized instance classes are designed to deliver the highest level of processor performance and achieve significantly higher packet per second (PPS) performance, lower network jitter, and lower network latency. You should use this instance class if you are performing large heterogeneous migrations and want to minimize the migration time.

The memory-optimized instance classes are designed for migrations or replications of high-throughput transaction systems which can consume large amounts of CPU and memory.

AWS DMS Storage is primarily consumed by log files and cached transactions. Normally, doing a full load does not require a significant amount of instance storage on your AWS DMS replication instance. However, if you are doing replication along with your full load, then the changes to the source database are stored on the AWS DMS replication instance while the full load is taking place. If you are migrating a very large

source database that is also receiving a lot of updates while the migration is in progress, then a significant amount of instance storage could be consumed.

The instances come with 50 GB of instance storage but can be scaled up as appropriate. Normally, this amount of storage should be more than adequate for most migration scenarios. However, it's always a good idea to pay attention to storage-related metrics. Make sure to scale up your storage if you find you are consuming more than the default allocation.

Also, in some extreme cases where very large databases with very high transaction rates are being migrated with replication enabled, it is possible that the AWS DMS replication may not be able to catch up in time. If you encounter this situation, it may be necessary to stop the changes to the source database for some number of minutes in order for the replication to catch up before you repoint your application to the target Aurora DB.

This paper has been archived

For the latest technical content, refer to the AWS
Whitepapers & Guides page:

<https://aws.amazon.com/whitepapers>

Create replication instance

Replication instance configuration

Name

The name must be unique among all of your replication instances in the current AWS region.

Replication instance name must not start with a numeric value

Descriptive Amazon Resource Name (ARN) - *optional*

A friendly name to override the default DMS ARN. You cannot modify it after creation.

Description

The description must only have unicode letters, digits, whitespace, or one of these symbols: _:/=-@. 1000 maximum character.

Instance class [Info](#)

Choose an appropriate instance class for your replication needs. Each instance class provides differing levels of compute, network and memory capacity. [DMS pricing](#)

dms.t3.medium
2 vCPUs 4 GiB Memory

Include previous-generation instance classes

Engine version

Choose an AWS DMS version to run on your replication instance. [DMS versions](#)

3.4.4

Include Beta DMS versions

Allocated storage (GiB) [Info](#)

Choose the amount of storage space you want for your replication instance. AWS DMS uses this storage for log files and cached transactions while replication tasks are in progress.

50

VPC

Choose an Amazon Virtual Private Cloud (VPC) where your replication instance should run.

Choose a VPC

Multi AZ

If you choose this option, AWS DMS will perform a multi-AZ deployment, with a primary instance in one availability zone (AZ) and a standby instance in another AZ. This configuration provides a highly available, fault-tolerant replication environment. Billing is based on [DMS pricing](#)

Publicly accessible

If you choose this option, AWS DMS will assign a public IP address to your replication instance, and you'll be able to connect to databases outside of your Amazon VPC.

The screenshot shows a form with three expandable sections, each with a right-pointing triangle icon:

- ▶ **Advanced security and network configuration**
- ▶ **Maintenance**
- ▶ **Tags**

At the bottom right of the form, there are two buttons: **Cancel** and **Create**.

Figure 12 — Create replication instance page in the AWS DMS console

Define database source and target endpoints

A database endpoint is used by the replication instance to connect to a database. To perform a database migration, you must create *both* a source database endpoint and a target database endpoint. The specified database endpoints can be on premises, running on Amazon EC2, or running on Amazon RDS, but the source and target cannot both be on premises.

This paper has been archived

We highly recommend that you test your database endpoint connection after you define it. The same page used to create a database endpoint can also be used to test it, as explained later in this paper.

For the latest technical content, refer to the AWS

Whitepapers & Guides page:

Note: If you have foreign key constraints in your source schema, when creating your target endpoint you need to enter the following for **Extra connection attributes** in the **Advanced** section:

```
initstmt=SET FOREIGN_KEY_CHECKS=0
```

This disables the foreign key checks while the target tables are being loaded. This in turn prevents the load from being interrupted by failed foreign key checks on partially loaded tables.

Create endpoint

Endpoint type [Info](#)

Source endpoint
A source endpoint allows AWS DMS to read data from a database (on-premises or in the cloud), or from other data source such as Amazon S3.

Target endpoint
A target endpoint allows AWS DMS to write data to a database, or to other data source.

Select RDS DB instance

Endpoint configuration

Endpoint identifier [Info](#)
A label for the endpoint to help you identify it.

Descriptive Amazon Resource Name (ARN) - optional
A friendly name to override the default DMS ARN. You cannot modify it after creation.

Source engine
The type of database engine this endpoint is connected to.

▶ **Endpoint settings**

▶ **KMS master key**

▶ **Tags**

▶ **Test endpoint connection (optional)**

[Cancel](#) [Create endpoint](#)

Figure 13 — Create database endpoint page in the AWS DMS console

Create and run a migration task

Now that you have created and tested your source database endpoint and your target database endpoint, you can create a task to do the data migration. When you create a task, you specify the replication instance that you have created, the database migration method type (discussed earlier), the source database endpoint, and your target database endpoint for your Amazon Aurora database cluster.

Also, under **Task Settings**, if you have already created the full schema in the target database, then you should change the **Target table preparation mode** to **Do nothing** rather than using the default value of **Drop tables on target**. The latter can cause you to lose aspects of your schema definition like foreign key constraints when it drops and recreates tables.

When creating a task, you can create table mappings that specify the source schema along with the corresponding tables to be migrated to the target endpoint. The default mapping method migrates all source tables to target tables of the same name if they exist. Otherwise, it creates the source table(s) on the target (depending on your task settings). Additionally, you can create custom mappings (using a JSON file) if you want to migrate only certain tables or if you want to have more control over the field and table mapping process. You can also choose to migrate only one schema or all schemas from your source endpoint.

For the latest technical content, refer to the AWS
Whitepapers & Guides page:

<https://aws.amazon.com/whitepapers>

Create database migration task

Task configuration

Task identifier

Descriptive Amazon Resource Name (ARN) - *optional*
A friendly name to override the default DMS ARN. You cannot modify it after creation.

Replication instance

Source database endpoint

Target database endpoint

Migration type [Info](#)

For the latest technical content, refer to the AWS
Whitepapers & Guides page:

<https://aws.amazon.com/whitepapers>

Task settings

Editing mode [Info](#)

Wizard
You can enter only a subset of the available task settings.

JSON editor
You can enter all available task settings directly in JSON format.

Target table preparation mode [Info](#)

Do nothing

Drop tables on target

Truncate

Include LOB columns in replication [Info](#)

Don't include LOB columns

Full LOB mode

Limited LOB mode

Maximum LOB size (KB) [Info](#)

32

Enable validation
Choose this setting if you want AWS DMS to compare the data at the source and the target, immediately after it performs a full data load. Validation ensures that your data was migrated accurately, but it requires additional time to complete.

Enable CloudWatch logs [Info](#)
DMS task logging uses Amazon CloudWatch to log information during the migration process. You can change the component activities logged and the amount of information logged for each one.

► Advanced task settings

Premigration assessment [Info](#)

A premigration assessment warns you of potential migration issues before starting your migration task. Premigration assessments generally have minimal impact on your databases and take minimal time to run.

Enable premigration assessment run

Migration task startup configuration

Start migration task

Automatically on create
Available only if the premigration assessment is not enabled.

Manually later


► Tags

Cancel

Figure 14 — Create task page in the AWS DMS console

You can use the AWS Management Console to monitor the progress of your AWS Database Migration Service (AWS DMS) tasks. You can also monitor the resources and network connectivity used. The AWS DMS console shows basic statistics for each task, including the task status, percent complete, elapsed time, and table statistics, as the following image shows.

Additionally, you can select a task and display performance metrics for that task, including throughput, records per second migrated, disk and memory use, and latency.



ID	Status	Source	Target	Type	Complete %	Elapsed time	Tables loaded	Tables loading	Tables queued
migrate-rdsmysql-to-rdsauro	Load complete	rds-mysql-test-	aur-trg-02	Full Load	100	0m	10	0	0

Figure 15 — Task status in AWS DMS console

Testing and cutover

Once the schema and data have been successfully migrated from the source database to Amazon Aurora, you are ready to perform the cutover of your migration process. The testing approach should be refined after each test migration, and the final migration plan should include a test plan that ensures adequate testing of the migrated database. For the latest technical content, refer to the AWS

Whitepapers & Guides page:

<https://aws.amazon.com/whitepapers>

Migration testing

Table 2 — Migration testing

Test Category	Purpose
Basic acceptance tests	<p>These pre-cutover tests should be automatically run upon completion of the data migration process. Their primary purpose is to verify whether the data migration was successful. Following are some common outputs from these tests:</p> <ul style="list-style-type: none"> • Total number of items processed • Total number of items imported • Total number of items skipped • Total number of warnings • Total number of errors <p>If any of these totals reported by the tests deviate from the expected values, then it means the migration was not successful, and the issues need to be resolved before moving to the next step in the process or the end of testing.</p>
Functional tests	<p>These post-cutover tests exercise the functionality of the application(s) using Aurora for data storage. They include a combination of automated and manual tests. The primary purpose of the functional tests is to identify problems in the application caused by the migration of the data to Aurora.</p>
Nonfunctional tests	<p>These post-cutover tests assess the nonfunctional characteristics of the application, such as performance under varying levels of load.</p>
User acceptance tests	<p>These post-cutover tests should be run by the end users of the application once the final data migration and cutover is complete. The purpose of these tests is for the end users to decide if the application is sufficiently usable to meet its primary function in the organization.</p>

Cutover

Once you have completed the final migration and testing, it is time to point your application to the Amazon Aurora database. This phase of migration is known as

cutover. If the planning and testing phase has been run properly, cutover should not lead to unexpected issues.

Pre-cutover actions

- **Choose a cutover window** — Identify a block of time when you can accomplish cutover to the new database with minimum disruption to the business. Normally you would select a low activity period for the database (typically nights and/or weekends).
- **Make sure changes are caught up** — If a near-zero downtime migration approach was used to replicate database changes from the source to the target database, make sure that all database changes are caught up and your target database is not significantly lagging behind the source database.
- **Prepare scripts to make the application configuration changes** — In order to accomplish the cutover, you need to modify database connection details in your application configuration files. Large and complex applications may require updates to connection details in multiple places. Make sure you have the necessary scripts ready to update the connection configuration quickly and reliably.
- **Stop the application** — Stop the application processes on the source database and put the source database in read-only mode so that no further writes can be made to the source database. If the source database changes aren't fully caught up with the target database, wait for some time while these changes are fully propagated to the target database.
- **Run pre-cutover tests** — Run automated pre-cutover tests to make sure that the data migration was successful.

Cutover

- **Run cutover** — If pre-cutover checks were completed successfully, you can now point your application to Amazon Aurora. Run scripts created in the pre-cutover phase to change the application configuration to point to the new Aurora database.
- **Start your application** — At this point, you may start your application. If you have an ability to stop users from accessing the application while the application is running, exercise that option until you have run your post-cutover checks.

Post-cutover checks

- **Run post-cutover tests** — Run predefined automated or manual test cases to make sure your application works as expected with the new database. It's a good strategy to start testing read-only functionality of the database first before running tests that write to the database.
- **Enable user access and closely monitor** — If your test cases were run successfully, you may give user access to the application to complete the migration process. Both application and database should be closely monitored at this time.

Conclusion

Amazon Aurora is a high performance, highly available, and enterprise-grade database built for the cloud. Leveraging Amazon Aurora can result in better performance and greater availability than other open-source databases and lower costs than most commercial grade databases. This paper proposes strategies for identifying the best method to migrate databases to Amazon Aurora and details the procedures for planning and completing those migrations. In particular, AWS Database Migration Service (AWS DMS) as well as the AWS Schema Conversion Tool are the recommended tools for heterogeneous migration scenarios. These powerful tools can greatly reduce the cost and complexity of database migrations.

This paper has been archived
For the latest technical content, refer to the AWS
Whitepapers & Guides page:

Contributors <https://aws.amazon.com/whitepapers>

Contributors to this document include:

- Puneet Agarwal, Solutions Architect, Amazon Web Services
- Chetan Nandikanti, Database Specialist Solutions Architect, Amazon Web Services
- Scott Williams, Solutions Architect, Amazon Web Services
Jonathan Doe, Solutions Architect, Amazon Web Services

Further reading

For additional information, see:

- [Amazon Aurora Product Details](#)



- [Amazon Aurora FAQs](#)
- [AWS Database Migration Service](#)
- [AWS Database Migration Service FAQs](#)

Document history

Date	Description
July 28, 2021	Reviewed for technical accuracy
June 10, 2016	First publication

This paper has been archived

For the latest technical content, refer to the AWS
Whitepapers & Guides page:

<https://aws.amazon.com/whitepapers>